

SHEET NUM.														ITEM	ITEM EXT	GRAND TOTAL 01/SAE/O T	UNIT	DESCRIPTION	SEE SHEET NO.	
5-6	8-9	10	11	12	13	14	16	17	19	20	21	22	23							24
<b>ROADWAY</b>																				
LS															201	11000	LS	CLEARING AND GRUBBING		
		70				67	147								202	23000	284	SY	PAVEMENT REMOVED	
	50		265			138	1,495						20	65	202	30000	2,033	SF	WALK REMOVED	
	15					36	140						20	25	202	32000	236	FT	CURB REMOVED	
	154	81	1,085			149	1,702						1,785	75	608	10000	5,031	SF	4" CONCRETE WALK	
													360		608	13000	360	SF	6" CONCRETE WALK	
	48					214	327						130	130	608	52000	849	SF	CURB RAMP	
		40				40							40	20	608	53020	140	SF	DETECTABLE WARNING	
<b>EROSION CONTROL</b>																				
120															660	30000	120	SY	SODDING UNSTAKED	
<b>DRAINAGE</b>																				
							53								611	04400	53	FT	12" CONDUIT, TYPE B	
							2								611	98180	2	EACH	CATCH BASIN, NO. 3A	
													2		611	98645	2	EACH	CATCH BASIN GRATE, AS PER PLAN	5
		1					2								611	99654	3	EACH	MANHOLE ADJUSTED TO GRADE	
<b>PAVEMENT</b>																				
	3					5							32	6	253	01000	46	SY	PAVEMENT REPAIR	
	235														254	01000	235	SY	PAVEMENT PLANING, ASPHALT CONCRETE, 2" DEPTH	
							19								301	46000	19	CY	ASPHALT CONCRETE BASE, PG64-22	
													15		304	20000	15	CY	AGGREGATE BASE	
	14	4				4	4								441	50000	26	CY	ASPHALT CONCRETE SURFACE COURSE, TYPE 1, (448), PG64-22	
													85		452	10010	85	SY	6" NON-REINFORCED CONCRETE PAVEMENT, CLASS QC 1P	
	20		40			18									609	14000	78	FT	CURB, TYPE 2-A	
														15	609	16000	15	FT	CURB, TYPE 2-B	
							136								609	24500	136	FT	CURB, TYPE 4-B	
		10				9									609	72100	19	CY	CONCRETE MEDIAN	
<b>TRAFFIC CONTROL</b>																				
		25						25							630	02100	50	FT	GROUND MOUNTED SUPPORT, NO. 2 POST	
252	290		97	30	55	77	25	60	30	25	25	25			630	03100	991	FT	GROUND MOUNTED SUPPORT, NO. 3 POST	
					2	2	1	2		2					630	70082	9	EACH	OVERHEAD SIGN SUPPORT FOUNDATION, DMS PEDESTAL	
					2	2	1	2		2					630	72520	5	EACH	OVERHEAD SIGN SUPPORT, TYPE TC-16.22, DESIGN 7	
162	220	20	53	25	20	54	18	40	25	20	25	25	10		630	80100	717	SF	SIGN, FLAT SHEET	
				4	2		2		3	2	4	2			630	84900	19	EACH	REMOVAL OF GROUND MOUNTED SIGN AND DISPOSAL	
	1		1												630	97700	2	EACH	SIGNING, MISC.: SOLAR POWERED FLASHING BEACON SYSTEM SIGN ASSEMBLY	5
				2	2		2		2	2	2	2			630	97700	14	EACH	SIGNING, MISC.: SOLAR POWERED RECTANGULAR RAPID FLASHING BEACON (RRFB) SIGN ASSEMBLY	5
		0.01				0.02						0.01			644	00300	0.04	MILE	CENTER LINE: SOLID DOUBLE	
						0.02									644	00300	0.02	MILE	CENTER LINE: SOLID SINGLE YELLOW	
						52									644	00500	52	FT	STOP LINE	
	13,635	265	781	115	90	120	128	100	135	140	270	325	270	250	644	00601	16,624	FT	CROSSWALK LINE, AS PER PLAN	3
						46									644	00700	46	FT	TRANSVERSE/DIAGONAL LINE: YELLOW	
				35	45		35		30	55	35	20			644	20801	255	FT	YIELD LINE, AS PER PLAN	3
	8,845	267	612			20	115					15	160	160	644	30000	10,194	FT	REMOVAL OF PAVEMENT MARKING	
<b>TRAFFIC SIGNALS</b>																				
						2									625	18600	2	EACH	BRACKET ARM, MISC.: INSTALLATION ONLY	
						110		20							625	25400	130	FT	CONDUIT, 2", 725.04	
						15		10							625	25500	25	FT	CONDUIT, 3", 725.04	
								75							625	25902	75	FT	CONDUIT, JACKED OR DRILLED, 725.04, 2"	
						125		30							625	29000	155	FT	TRENCH	
						3		3							625	30700	6	EACH	PULL BOX, 725.08, 18"	
				2	6	3	2	3	2	6	2	2			625	32000	28	EACH	GROUND ROD	
						4		4							632	04000	8	EACH	VEHICULAR SIGNAL HEAD, MISC.: 3 SECTION (HYBRID BEACON: RED-RED-YELLOW)	5
	354					2		2					6	6	632	20730	370	EACH	PEDESTRIAN SIGNAL HEAD (LED), TYPE D2, COUNTDOWN	
	4					2		2							632	20750	8	EACH	ACCESSIBLE PEDESTRIAN PUSHBUTTON	
	5,370					30		30					90	90	632	40500	5,610	FT	SIGNAL CABLE, 5 CONDUCTOR, NO. 14 AWG	
						340		295							632	40700	635	FT	SIGNAL CABLE, 7 CONDUCTOR, NO. 14 AWG	
						2		2							632	64010	4	EACH	SIGNAL SUPPORT FOUNDATION	
				2	4	2	2	2	2	4	2	2			632	64020	22	EACH	PEDESTAL FOUNDATION	
						2		2							632	72100	4	EACH	SIGNAL SUPPORT, TYPE TC-81.22, DESIGN 2	
					2		1			2					632	89500	5	EACH	PEDESTAL, 3'	
	4														632	90020	4	EACH	REMOVAL OF MISCELLANEOUS TRAFFIC SIGNAL ITEM, PEDESTRIAN PUSH BUTTON	
	354												6	6	632	90020	366	EACH	REMOVAL OF MISCELLANEOUS TRAFFIC SIGNAL ITEM, PEDESTRIAN SIGNAL HEAD	
								3							632	90020	3	EACH	REMOVAL OF MISCELLANEOUS TRAFFIC SIGNAL ITEM, RRFB SIGN ASSEMBLY	
						1		1							633	65510	2	EACH	CABINET, TYPE TS-2	
						1		1							633	67100	2	EACH	CABINET FOUNDATION	
						1		1							809	69122	2	EACH	ATC V6.24 CONTROLLER	
<b>INCIDENTALS</b>																				
LS															614	11000	LS		MAINTAINING TRAFFIC	
LS															623	10001	LS		CONSTRUCTION LAYOUT STAKES AND SURVEYING, AS PER PLAN	5
															624	10000	LS		MOBILIZATION	

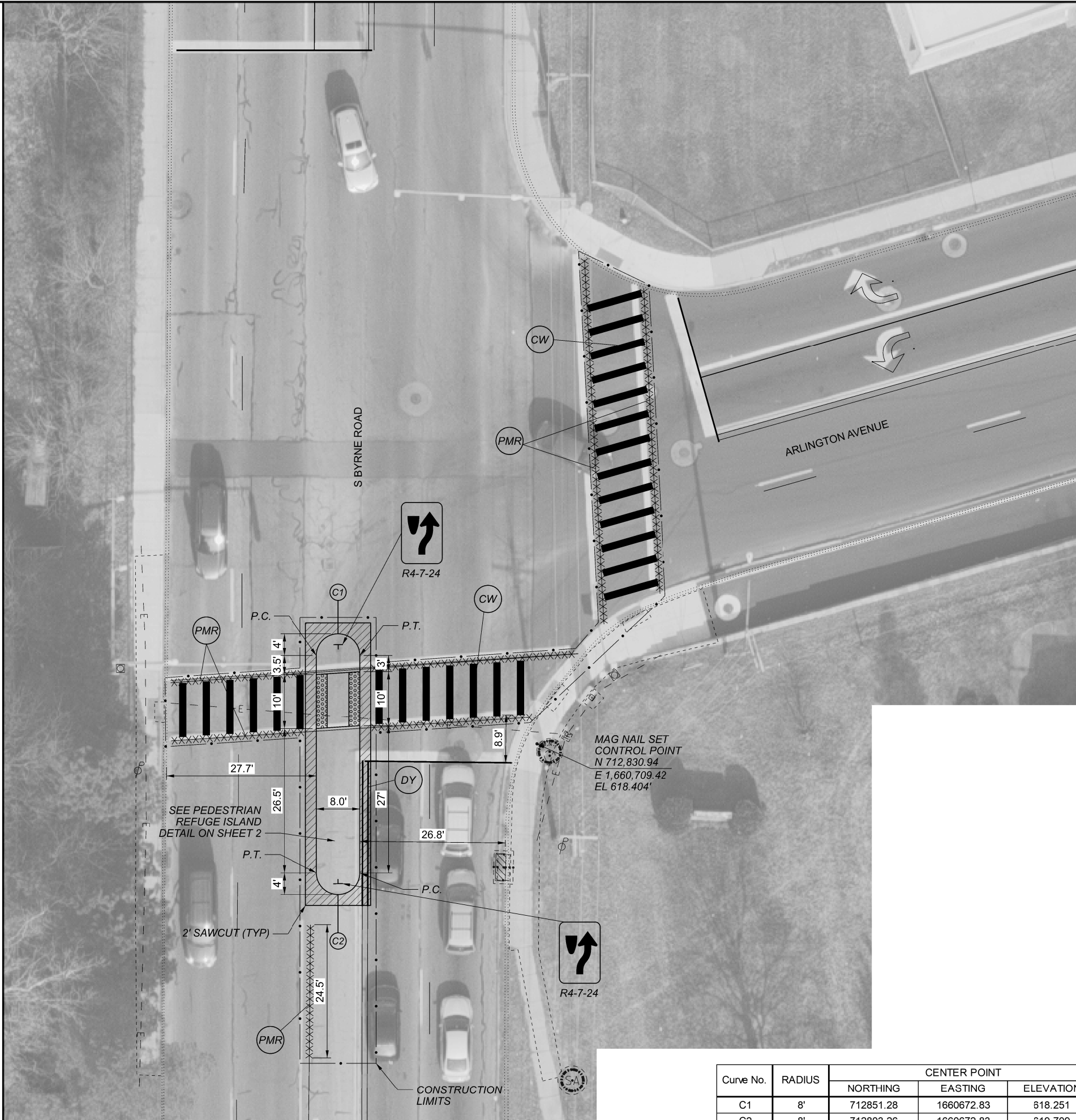
DESIGN AGENCY  
**TOOLE**  
 DESIGN

DESIGNER  
MGC

REVIEWER  
KCA 12/11/20

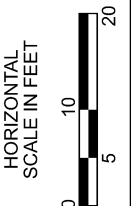
PROJECT ID  
113269

SHEET TOTAL  
7 24



**LEGEND**

- PROPOSED PUSHBUTTON
- ↙ PROPOSED PEDESTRIAN SIGNAL HEAD
- ➔ PROPOSED VEHICULAR SIGNAL HEAD
- ▣ PROPOSED PEDESTAL
- ⊠ PROPOSED SIGNAL POLE WITH MAST ARM
- ⊞ PROPOSED PULL BOX
- ⊞ PROPOSED CONTROLLER CABINET
- ▣ EXISTING PEDESTAL
- ⊠ EXISTING SIGNAL POLE
- ⊞ SIGN
- xxxxxx PAVEMENT MARKING TO BE REMOVED
- ▭ CONSTRUCTION LIMITS
- ▭ CONCRETE SIDEWALK
- ▭ CONCRETE DRIVEWAY
- ⊞ WALK REMOVED AND REPLACED
- ⊞ PAVEMENT REMOVED AND REPLACED
- ⊞ STOP LINE
- ⊞ YIELD MARKING LINE
- ⊞ CROSSWALK LINE
- ⊞ DOUBLE YELLOW
- ⊞ EDGE LINE, YELLOW
- ⊞ PAVEMENT MARKING TO BE REMOVED



NOTE:  
 MATCH PROPOSED REFUGE ISLAND INTO ADJACENT ROADWAY ELEVATIONS. THE CONTRACTOR'S SURVEYOR SHALL SET OUT COORDINATE GEOMETRY FOR THE PROPOSED PAVING/CURBS AND RECORD ELEVATIONS PRIOR TO ANY REMOVAL WORK. THIS INFORMATION WILL BE USED TO ESTABLISH THE PROPOSED WORK.

TOTALS CARRIED TO GENERAL SUMMARY

	202	441	608	608	609	630	630	644	644	644
PAVEMENT REMOVED										
ASPHALT CONCRETE SURFACE COURSE, TYPE 1, (448), PG64-22										
4" CONCRETE WALK										
DETECTABLE WARNING										
CONCRETE MEDIAN										
SIGN, FLAT SHEET										
GROUND MOUNTED SUPPORT, NO. 2 POST										
REMOVAL OF PAVEMENT MARKING										
CENTER LINE: SOLID DOUBLE										
CROSSWALK LINE, AS PER PLAN										
SY	CY	SF	SF	CY	SF	FT	FT	MILE	FT	
70	4	81	40	10	20	25	267	0.01	265	

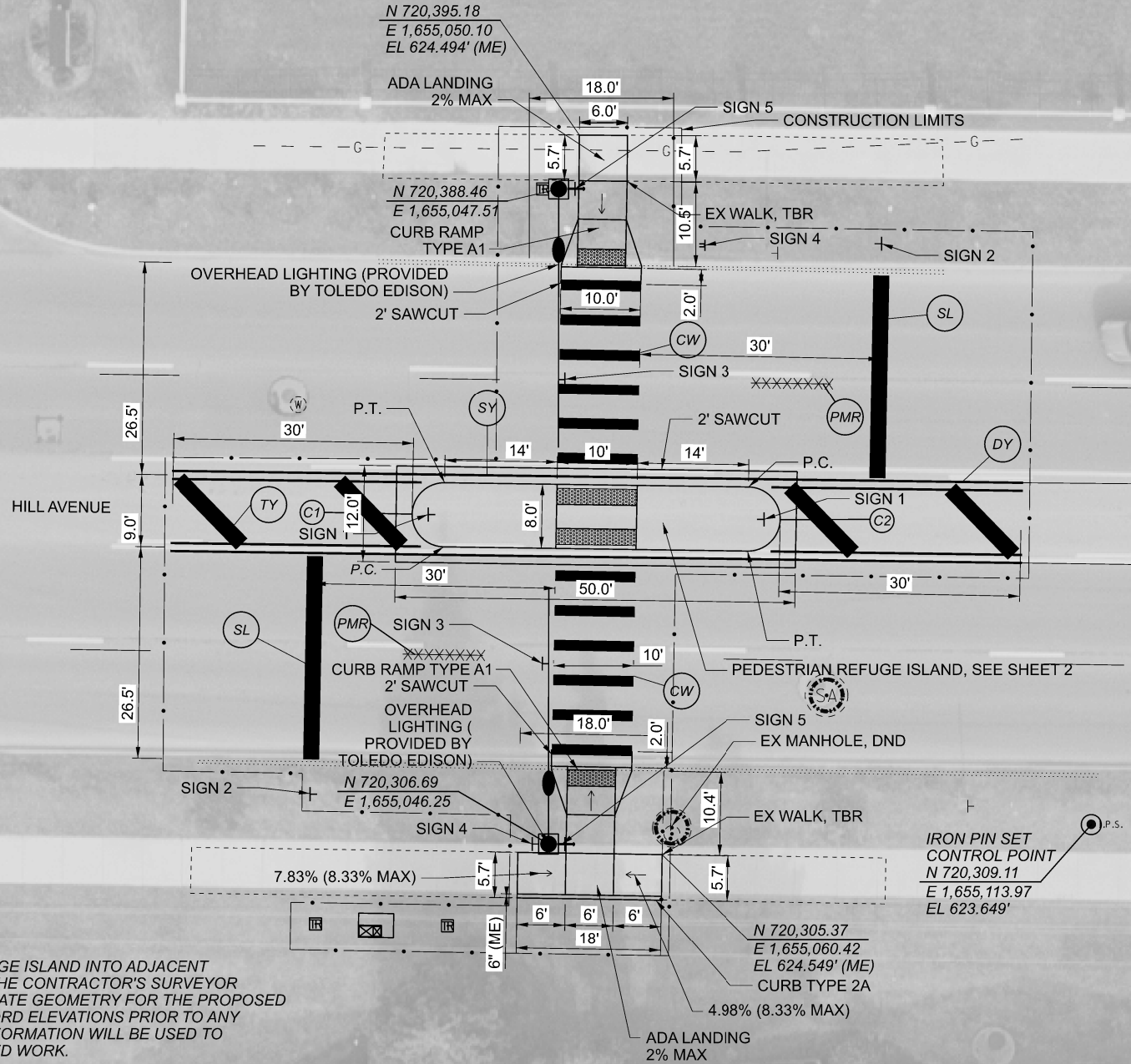
Curve No.	RADIUS	CENTER POINT			BEGIN CURVE (PC)			END CURVE (PT)		
		NORTHING	EASTING	ELEVATION	NORTHING	EASTING	ELEVATION	NORTHING	EASTING	ELEVATION
C1	8'	712851.28	1660672.83	618.251	712847.28	1660668.83	618.455	712847.28	1660676.83	618.392
C2	8'	712803.26	1660672.83	619.709	712807.26	1660676.83	619.506	712807.26	1660668.83	619.686

LUC-TOLEDO PEDESTRIAN SAFETY IMPROVEMENT  
 ARLINGTON AVE AND BYRNE RD



DESIGNER  
 AR  
 REVIEWER  
 KCA 12/11/20  
 PROJECT ID  
 113269  
 SHEET TOTAL  
 10 24

TORRINGTON DRIVE



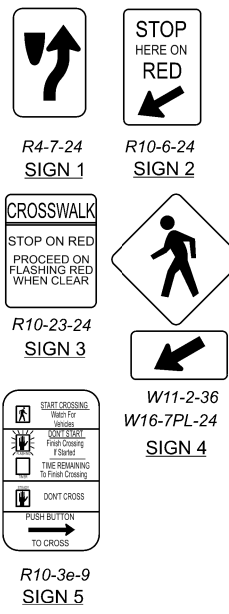
NOTE: MATCH PROPOSED REFUGE ISLAND INTO ADJACENT ROADWAY ELEVATIONS. THE CONTRACTOR'S SURVEYOR SHALL SET OUT COORDINATE GEOMETRY FOR THE PROPOSED PAVING/CURBS AND RECORD ELEVATIONS PRIOR TO ANY REMOVAL WORK. THIS INFORMATION WILL BE USED TO ESTABLISH THE PROPOSED WORK.

Cune No.	RADIUS	CENTER POINT			BEGIN CURVE (PC)			END CURVE (PT)		
		NORTHING	EASTING	ELEVATION	NORTHING	EASTING	ELEVATION	NORTHING	EASTING	ELEVATION
C1	8'	720347.84	1655029.24	624.780	720343.76	1655033.18	624.779	720351.76	1655033.29	624.780
C2	8'	720347.15	1655075.23	624.447	720351.23	1655071.29	624.469	720343.23	1655071.18	624.424

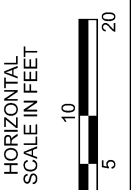
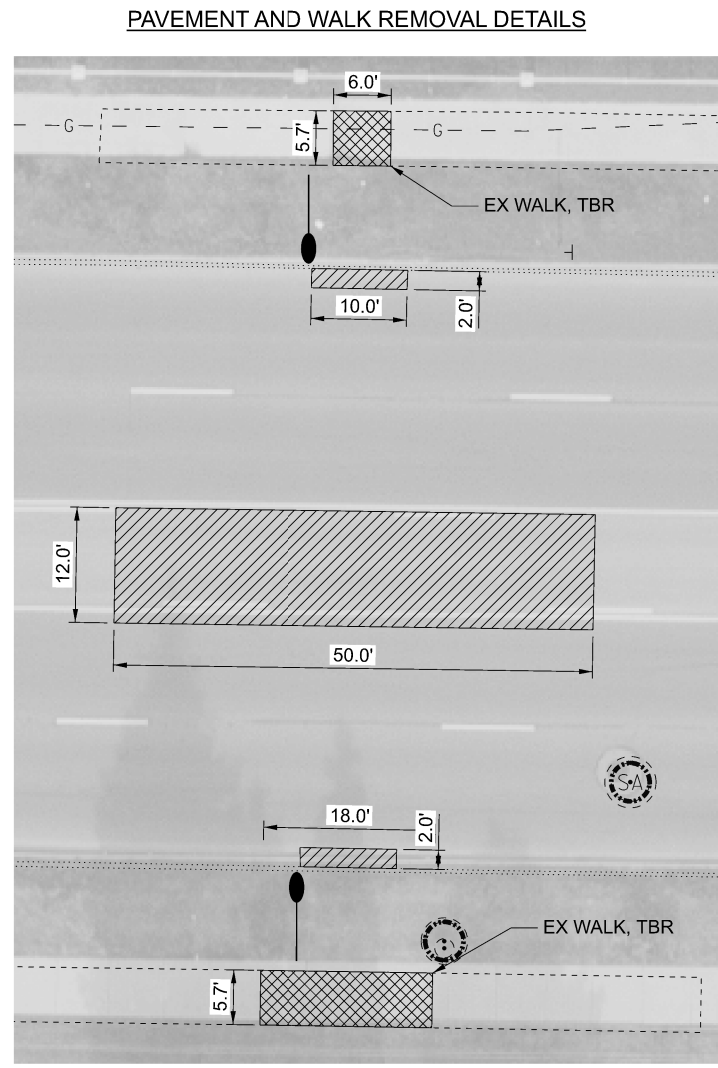
NOTE: ALL CONTROL POINTS ARE LOCATED AT FACE OF CURB.

TOTALS CARRIED TO GENERAL SUMMARY

202	202	202	202	441	608	608	608	609	609	625	625	625	625	625	625	630	630	630	632	632	632	632	632	632	633	633	633	809	644	644	644	644	644	644	644
PAVEMENT REMOVED	WALK REMOVED	CURB REMOVED	PAVEMENT REPAIR	ASPHALT CONCRETE SURFACE COURSE, TYPE 1, (448), PG64-22	4" CONCRETE WALK	CURB RAMP	DETECTABLE WARNING	CONCRETE MEDIAN	CURB, TYPE 2-A	BRACKET ARM, MISC.: INSTALLATION ONLY	GROUND ROD	PULL BOX, 725.08, 18"	TRENCH	CONDUIT, 2", 725.04	CONDUIT, 3", 725.04	SIGN, FLAT SHEET	GROUND MOUNTED SUPPORT, NO. 3 POST	OVERHEAD SIGN SUPPORT FOUNDATION, DMS PEDESTAL	SIGNAL SUPPORT, TYPE TC-81.22, DESIGN 2	VEHICULAR SIGNAL HEAD, MISC.: 3 SECTION (HYBRID BEACON: RED-RED-YELLOW)	PEDESTAL FOUNDATION	SIGNAL CABLE, 5 CONDUCTOR, NO. 14 AWG	SIGNAL CABLE, 7 CONDUCTOR, NO. 14 AWG	PEDESTRIAN SIGNAL HEAD (LED), TYPE D2, COUNTDOWN	ACCESSIBLE PEDESTRIAN PUSHBUTTON	SIGNAL SUPPORT FOUNDATION	CABINET, TYPE TS-2	CABINET FOUNDATION	ATC V6.24 CONTROLLER	REMOVAL OF PAVEMENT MARKING	STOP LINE	CENTER LINE: SOLID DOUBLE	CENTER LINE: SOLID SINGLE YELLOW	TRANSVERSE/DIAGONAL LINE: YELLOW	CROSSWALK LINE, AS PER PLAN
SY	SF	FT	SY	CY	SF	SF	SF	CY	FT	EACH	EACH	EACH	FT	FT	FT	SF	FT	EACH	EACH	EACH	EACH	EACH	EACH	EACH	EACH	EACH	EACH	EACH	EACH	FT	FT	MILE	MILE	FT	FT
67	138	36	5	4	149	214	40	9	18	2	3	3	125	110	15	54	77	2	2	4	2	30	340	2	2	2	1	1	1	20	52	0.02	0.02	46	120



- LEGEND**
- PROPOSED PUSHBUTTON
  - PROPOSED PEDESTRIAN SIGNAL HEAD
  - PROPOSED VEHICULAR SIGNAL HEAD
  - PROPOSED PEDESTAL
  - PROPOSED SIGNAL POLE WITH MAST ARM
  - PROPOSED PULL BOX
  - PROPOSED CONTROLLER CABINET
  - EXISTING PEDESTAL
  - EXISTING SIGNAL POLE
  - xxxxxx PAVEMENT MARKING TO BE REMOVED
  - CONSTRUCTION LIMITS
  - CONCRETE SIDEWALK
  - CONCRETE DRIVEWAY
  - WALK REMOVED AND REPLACED
  - PAVEMENT REMOVED AND REPLACED
  - SL STOP LINE
  - YM YIELD MARKING LINE
  - CW CROSSWALK LINE
  - DY DOUBLE YELLOW
  - EY EDGE LINE, YELLOW
  - PMR PAVEMENT MARKING TO BE REMOVED



LUC-TOLEDO PEDESTRIAN SAFETY IMPROVEMENT  
 HILLAVE AND WENZ RD

DESIGN AGENCY  
**TOOLE DESIGN**  
 DESIGNER: AR  
 REVIEWER: KCA 12/11/20  
 PROJECT ID: 113269  
 SHEET: 14 TOTAL: 24



