

ITEM 623, LUMP SUM CONSTRUCTION LAYOUT STAKES AND SURVEYING, AS PER PLAN

THE CONTRACTOR SHALL UTILIZE OHIO DEPARTMENT OF TRANSPORTATION FIELD DATA COLLECTION TECHNOLOGY (ARCGIS FIELD MAPS APPLICATION) TO FACILITATE THE INVENTORY OF TRANSPORTATION ASSETS INCLUDED IN THE PROJECT. THIS WORK INCLUDES RETIRING EXISTING ASSETS, ADDING NEW ASSETS, UPDATING THE INFORMATION FOR NEW ASSETS, ATTACHING PHOTOS AND ANY OTHER WORK THAT WOULD NEED TO BE DONE WITH THE ASSET MANAGEMENT SYSTEM TO DELIVER A COMPLETE INVENTORY UPDATE.

FIELD DATA COLLECTION SHALL INCLUDE THE FOLLOWING:

- ITEM 630: GROUND MOUNTED SUPPORT, NO. 3 POST, AS PER PLAN
- ITEM 630: SIGNING, MISC.: 4"X6" WOOD POST
- ITEM 630: SIGNING, MISC.: 6"X8" WOOD POST
- ITEM 630: GROUND MOUNTED SUPPORT, W6X9 BEAM
- ITEM 630: GROUND MOUNTED SUPPORT, W10X12 BEAM
- ITEM 630: GROUND MOUNTED SUPPORT, W8X18 BEAM
- ITEM 630: GROUND MOUNTED SUPPORT, W10X22 BEAM
- ITEM 630: GROUND MOUNTED SUPPORT, W12X30 BEAM
- ITEM 630: SIGNING, MISC.: SIGN SUPPORT ASSEMBLY, POLE MOUNTED
- ITEM 630: OVERHEAD SIGN SUPPORT, TYPE TC-12.31, DESIGN 12
- ITEM 630: OVERHEAD SIGN SUPPORT, TYPE TC-15.116, DESIGN 1
- ITEM 630: OVERHEAD SIGN SUPPORT, TYPE TC-15.116, DESIGN 2
- ITEM 630: OVERHEAD SIGN SUPPORT, TYPE TC-16.22, DESIGN 13
- ITEM 630: SIGN, FLAT SHEET
- ITEM 630: SIGN, EXTRUSHEET

WORK INCLUDES: FIELD DATA MANAGEMENT OF THE TRANSPORTATION ASSETS LISTED ABOVE, IN ACCORDANCE WITH THE INVENTORY MANUALS, WHICH CAN BE FOUND AT THIS LINK:

<https://extranet.dot.state.oh.us/AML/CollectorProgram/Pages/home.aspx>

THE CONTRACTOR SHALL SET UP A MEETING WITH THE DISTRICT ASSET MANAGER TO GO OVER THE PROCESS PRIOR TO STARTING CONSTRUCTION. TO SET UP A MEETING TO DISCUSS THE PROCESS, THE CONTRACTOR SHALL EMAIL THE DISTRICT ASSET MANAGER (LISA RAYBURG, lisa.rayburg@dot.ohio.gov). THE DISTRICT ASSET MANAGER WILL ASSIST THE CONTRACTOR WITH ANY CLARIFICATION OF SPECIFICATION OR QUESTIONS.

THE CONTRACTOR SHALL OBTAIN A NAMED USER ACCOUNT FOR SECURED SIGN-ON AND ACCESS THROUGH THE PROVIDED URL: <https://myodot.dot.state.oh.us>. THE DISTRICT ASSET MANAGER CAN ASSIST WITH THIS PROCESS DURING THE SCHEDULED MEETING TIME.

ARCGIS FIELD MAPS APPLICATION IS ACCESSED THROUGH A MOBILE DEVICE PROVIDED BY THE CONTRACTOR AND SHALL BE DOWNLOADED FROM THE APP STORE FREE OF CHARGE.

MOBILE DEVICES SHALL HAVE GPS FUNCTIONALITY TO ENABLE LOCATIONAL DATA COLLECTION. MOBILE DEVICES SHALL HAVE SUFFICIENT MEMORY AND STORAGE TO SUPPORT OFFLINE DATA CONNECTION GIVEN A CIRCUMSTANCE WHERE CELLULAR SERVICE BECOMES UNAVAILABLE.

IF THE CONTRACTOR WOULD LIKE ACCESS TO A WEB MAPPING APPLICATION, ACCESSIBLE THROUGH A WEB BROWSER, THEY WILL NEED TO MAKE MENTION OF THIS DURING THE ESTABLISHED MEETING TIME.

AFTER ALL INFORMATION HAS BEEN COLLECTED, THE CONTRACTOR SHALL EMAIL THE DISTRICT ASSET MANAGER (LISA RAYBURG, lisa.rayburg@dot.ohio.gov), FOR REVIEW AND CONFORMANCE OF THE SPECIFICATIONS.

THE DATA IS DEPLOYED ON TECHNOLOGY INFRASTRUCTURE (DATABASES AND SERVERS) WHICH OPERATE 24/7/365. HOWEVER, PERIODIC SCHEDULED MAINTENANCE MAY OCCUR, RESULTING IN TEMPORARY UNAVAILABILITY. ODOT WILL COMMUNICATE SYSTEM MAINTENANCE IN ADVANCE AS MUCH AS POSSIBLE.

THE DISTRICT ASSET MANAGER CAN PROVIDE PHONE OR EMAIL SUPPORT MONDAY-FRIDAY 8:00AM TO 3:30PM, WITH THE EXCEPTION OF OBSERVED HOLIDAYS. THE DISTRICT ASSET MANAGER SHALL BE CONTACTED FOR ALL MATTERS RELATED TO INVENTORY WORKFLOWS, DATA QUALITY ISSUES AND INVENTORY SPECIFICATIONS. THE CONTRACTOR SHALL COMMUNICATE ANY CONCERNS OR PROBLEMS WITH THE APPLICATION TO ENSURE IT CAN BE RESOLVED.

INVENTORY OF TRANSPORTATION ASSETS SHALL BE COMPLETED AND ACCEPTED PRIOR TO THE FINAL ACCEPTANCE DATE PER 109.12. FAILURE TO SUBMIT COMPLETED AND ACCEPTED DATA PRIOR TO THE FINAL ACCEPTANCE DATE WILL RESULT IN ASSESSED DAMAGES PER TABLE 108.07-1.

PAYMENT: ALL WORK ASSOCIATED WITH THE INVENTORY OF TRANSPORTATION ASSETS INCLUDED IN THE PROJECT SHALL BE PAID UNDER ITEM 623, LUMP SUM CONSTRUCTION LAYOUT STAKES AND SURVEYING, AS PER PLAN.

ITEM 630, RIGID OVERHEAD SIGN SUPPORT FOUNDATION, AS PER PLAN

THE FOLLOWING OVERHEAD SIGN SUPPORT FOUNDATIONS SHALL BE INSTALLED PER TC-21.11 OR TC-21.21, EXCEPT THAT THE FOUNDATION DEPTH SHALL BE ADJUSTED ACCORDING TO THE TABLE BELOW.

LOCATION	REFERENCE NO.	SLM	PLAN SHEET	ELEVATION VIEW SHEET	ADJUSTED FOUNDATION DEPTH (FT)
A	2-7	OTT-2-16.757 EB	20	56	23
B	2-17 (SW)	OTT-2-19.474 EB	26	59	20
C	2-26	OTT-2-23.427 EB	33	61	20
D	2-39 (S)	OTT-2-25.202 EB	37	64	16
E	2-39 (N)	OTT-2-25.202 EB	37	64	20
F	2-44 (S)	OTT-2-25.808 EB	38	65	16.5 (13.5 FT SOIL DRILLED SHAFT, 3 FT ROCK DRILLED SHAFT)
G	2-44 (N)	OTT-2-25.808 EB	38	65	14
H	2-56	OTT-2-28.095 WB	42	67	26
I	2-58 (W)	OTT-2-27.650 WB	42	69	25
J	2-63 (W)	OTT-2-27.135 WB	41	70	18
K	2-63 (E)	OTT-2-27.135 WB	41	70	18
L	2-90	OTT-2-19.731 WB	27	74	27
M	53-9	OTT-53-5.30 SB	49	83	23

PAYMENT FOR ALL LABOR, EQUIPMENT AND MATERIALS SHALL BE INCLUDED IN THE UNIT BID PRICE EACH. THE FOLLOWING ESTIMATED QUANTITIES HAVE BEEN INCLUDED IN THE GENERAL SUMMARY.

ITEM 630, RIGID OVERHEAD SIGN SUPPORT FOUNDATION, AS PER PLAN - LOCATION*
 * LOCATION A-M

DESIGN AGENCY



DESIGNER
ZAP


REVIEWER
CDW 11/03/23

PROJECT ID
114413

SHEET TOTAL
3 | 88

SHEET NUM.				PART.	ALT	ITEM	ITEM EXT	GRAND TOTAL	UNIT	DESCRIPTION	SEE SHEET NO.
14	15	16	17	01/NFP/21	(X)						
										TRAFFIC CONTROL	
	7	14		21		625	32000	21	EACH	GROUND ROD	
156.8				156.8		630	03101	156.8	FT	GROUND MOUNTED SUPPORT, NO. 3 POST, AS PER PLAN	2
110.7				110.7		630	06500	110.7	FT	GROUND MOUNTED STRUCTURAL BEAM SUPPORT, W6X9	
43.7				43.7		630	07000	43.7	FT	GROUND MOUNTED STRUCTURAL BEAM SUPPORT, W8X18	
100.6				100.6		630	07500	100.6	FT	GROUND MOUNTED STRUCTURAL BEAM SUPPORT, W10X22	
138.6				138.6		630	07600	138.6	FT	GROUND MOUNTED STRUCTURAL BEAM SUPPORT, W10X12	
1156.8				1156.8		630	08000	1,156.8	FT	GROUND MOUNTED STRUCTURAL BEAM SUPPORT, W12X30	
8				8		630	08601	8	EACH	SIGN POST REFLECTOR, AS PER PLAN (FLUORISCENT YELLOW)	2
59				59		630	09000	59	EACH	BREAKAWAY STRUCTURAL BEAM CONNECTION	
	6			6		630	72340	6	EACH	OVERHEAD SIGN SUPPORT, TYPE TC-12.31, DESIGN 12	
		4		4		630	72410	4	EACH	OVERHEAD SIGN SUPPORT, TYPE TC-15.116, DESIGN 1	
		3		3		630	72420	3	EACH	OVERHEAD SIGN SUPPORT, TYPE TC-15.116, DESIGN 2	
	1			1		630	72550	1	EACH	OVERHEAD SIGN SUPPORT, TYPE TC-16.22, DESIGN 13	
	25	52		77		630	75000	77	EACH	SIGN ATTACHMENT ASSEMBLY	
	4			4		630	79200	4	EACH	SIGN ATTACHMENT ASSEMBLY, MAST ARM	
268.7	28.7	18.6		316		630	80100	316	SF	SIGN, FLAT SHEET	
7505				7505		630	80200	7,505	SF	SIGN, GROUND MOUNTED EXTRUSHEET	
	1135	2745.5		3880.5		630	80224	3,880.5	SF	SIGN, OVERHEAD EXTRUSHEET	
268.7	28.7	18.6		316		630	81100	316	SF	SIGN ERECTED, FLAT SHEET	
7505	1135	2745.5		11385.5		630	81200	11,385.5	SF	SIGN ERECTED, EXTRUSHEET	
59				59		630	84500	59	EACH	GROUND MOUNTED STRUCTURAL BEAM SUPPORT FOUNDATION	
54				54		630	84501	54	EACH	GROUND MOUNTED STRUCTURAL BEAM SUPPORT FOUNDATION, AS PER PLAN	2
	2	6		8		630	84510	8	EACH	RIGID OVERHEAD SIGN SUPPORT FOUNDATION	
	1			1		630	84511	1	EACH	RIGID OVERHEAD SIGN SUPPORT FOUNDATION, AS PER PLAN (LOCATION A)	3
		1		1		630	84511	1	EACH	RIGID OVERHEAD SIGN SUPPORT FOUNDATION, AS PER PLAN (LOCATION B)	3
	1			1		630	84511	1	EACH	RIGID OVERHEAD SIGN SUPPORT FOUNDATION, AS PER PLAN (LOCATION C)	3
		1		1		630	84511	1	EACH	RIGID OVERHEAD SIGN SUPPORT FOUNDATION, AS PER PLAN (LOCATION D)	3
		1		1		630	84511	1	EACH	RIGID OVERHEAD SIGN SUPPORT FOUNDATION, AS PER PLAN (LOCATION E)	3
		1		1		630	84511	1	EACH	RIGID OVERHEAD SIGN SUPPORT FOUNDATION, AS PER PLAN (LOCATION F)	3
		1		1		630	84511	1	EACH	RIGID OVERHEAD SIGN SUPPORT FOUNDATION, AS PER PLAN (LOCATION G)	3
	1			1		630	84511	1	EACH	RIGID OVERHEAD SIGN SUPPORT FOUNDATION, AS PER PLAN (LOCATION H)	3
	1			1		630	84511	1	EACH	RIGID OVERHEAD SIGN SUPPORT FOUNDATION, AS PER PLAN (LOCATION I)	3
		1		1		630	84511	1	EACH	RIGID OVERHEAD SIGN SUPPORT FOUNDATION, AS PER PLAN (LOCATION J)	3
		1		1		630	84511	1	EACH	RIGID OVERHEAD SIGN SUPPORT FOUNDATION, AS PER PLAN (LOCATION K)	3
	1			1		630	84511	1	EACH	RIGID OVERHEAD SIGN SUPPORT FOUNDATION, AS PER PLAN (LOCATION L)	3
	1			1		630	84511	1	EACH	RIGID OVERHEAD SIGN SUPPORT FOUNDATION, AS PER PLAN (LOCATION M)	3
97	1	1		99		630	84900	99	EACH	REMOVAL OF GROUND MOUNTED SIGN AND DISPOSAL	
48	4			52		630	85400	52	EACH	REMOVAL OF GROUND MOUNTED MAJOR SIGN AND DISPOSAL	
3				3		630	85600	3	EACH	REMOVAL OF GROUND MOUNTED MAJOR SIGN AND REERECTION	
39		2		41		630	86003	41	EACH	REMOVAL OF GROUND MOUNTED POST SUPPORT AND DISPOSAL, AS PER PLAN	2

GENERAL SUMMARY

DESIGN AGENCY

 DESIGNER
 ZAP
 REVIEWER
 CDW 11/03/23
 PROJECT ID
 114413
 SHEET TOTAL
 7 | 88

SHEET NUM.				PART.	ALT	ITEM	ITEM EXT	GRAND TOTAL	UNIT	DESCRIPTION	SEE SHEET NO.
14	15	16	17	01/NFP/21	(X)						
										TRAFFIC CONTROL (CONTINUED)	
102	8			110		630	86102	110	EACH	REMOVAL OF GROUND MOUNTED STRUCTURAL BEAM SUPPORT AND DISPOSAL	
2	7	23		32		630	87400	32	EACH	REMOVAL OF OVERHEAD MOUNTED SIGN AND DISPOSAL	
1	2	6		9		630	89702	9	EACH	REMOVAL OF OVERHEAD SIGN SUPPORT AND DISPOSAL	
2	2	4		8		630	97700	8	EACH	SIGNING, MISC.:SIGN SUPPORT ASSEMBLY, POLE MOUNTED	2
210.5				210.5		630	97900	210.5	FT	SIGNING, MISC.:4"X6" WOOD POST, AS PER PLAN	2
210.5				210.5		630	97900	210.5	FT	SIGNING, MISC.:4"X6" WOOD POST, AS PER PLAN	2
779.1				779.1		630	97900	779.1	FT	SIGNING, MISC.:6"X8" WOOD POST, AS PER PLAN	2
	1			1		631	94250	1	EACH	REMOVAL OF LUMINAIRE	
	1			1		631	94406	1	EACH	REMOVAL OF SIGNS WIRED	
	1			1		631	94450	1	EACH	REMOVAL OF BALLAST	
	1			1		631	97700	1	EACH	SIGN LIGHTING MISC.: REMOVAL OF SIGN SERVICE AND DISPOSAL, AS PER PLAN	2
										ROADWAY	
			125	125		202	38000	125	FT	GUARDRAIL REMOVED	
			9	9		202	42206	9	EACH	ANCHOR ASSEMBLY REMOVED	
			0.414	0.414		209	15050	0.41	MILE	RESHAPING UNDER GUARDRAIL	
			1650	1650		606	15050	1,650	FT	GUARDRAIL, TYPE MGS	
			8	8		606	26150	8	EACH	ANCHOR ASSEMBLY, MGS TYPE E, MASH 2016	
			4	4		606	26550	4	EACH	ANCHOR ASSEMBLY, MGS TYPE T	
			24	24		626	00116	24	EACH	BARRIER REFLECTOR, TYPE 5, BIDIRECTIONAL	
			107.84	107.84		659	00300	107.84	CY	TOPSOIL	
			971.52	971.52		659	10000	971.52	SY	SEEDING AND MULCHING	
			48.58	48.58		659	14000	48.58	SY	REPAIR SEEDING AND MULCHING	
			48.58	48.58		659	15000	48.58	SY	INTER-SEEDING	
			0.13	0.13		659	20000	0.13	TON	COMMERCIAL FERTILIZER	
			5.25	5.25		659	35000	5.25	MGAL	WATER	
										INCIDENTALS	
				LS		614	11000	LS		MAINTAINING TRAFFIC	
				200		614	11111	200	HOUR	LAW ENFORCEMENT OFFICER WITH PATROL CAR FOR ASSISTANCE, AS PER PLAN	6
				4		614	18601	4	SNMT	PORTABLE CHANGEABLE MESSAGE SIGN, AS PER PLAN	6
				LS		623	10001	LS		CONSTRUCTION LAYOUT STAKES AND SURVEYING, AS PER PLAN	3
				LS		624	10000	LS		MOBILIZATION	

GENERAL SUMMARY

DESIGN AGENCY



DESIGNER

ZAP

REVIEWER

CDW 11/03/23

PROJECT ID

114413

SHEET


8

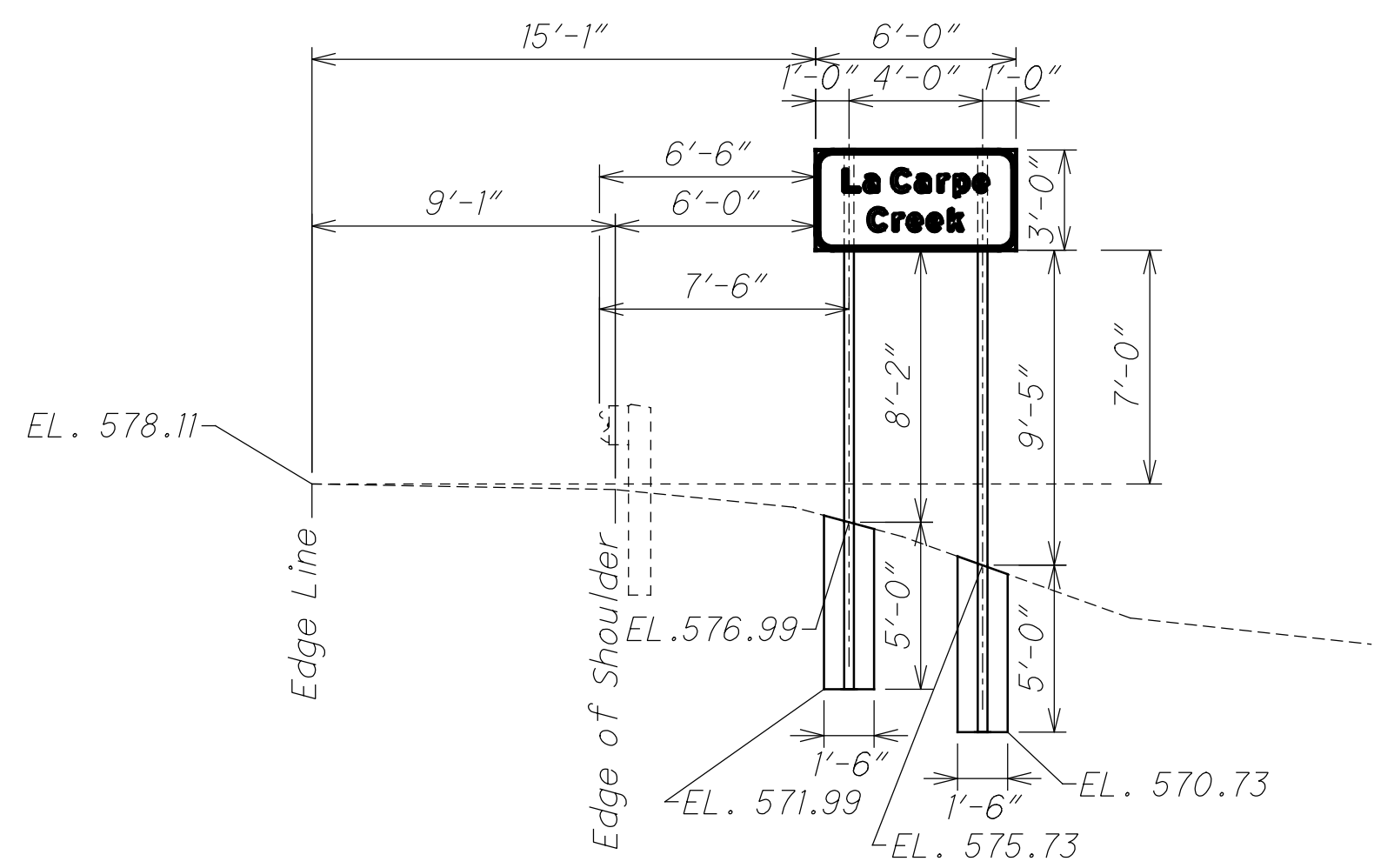
TOTAL

88

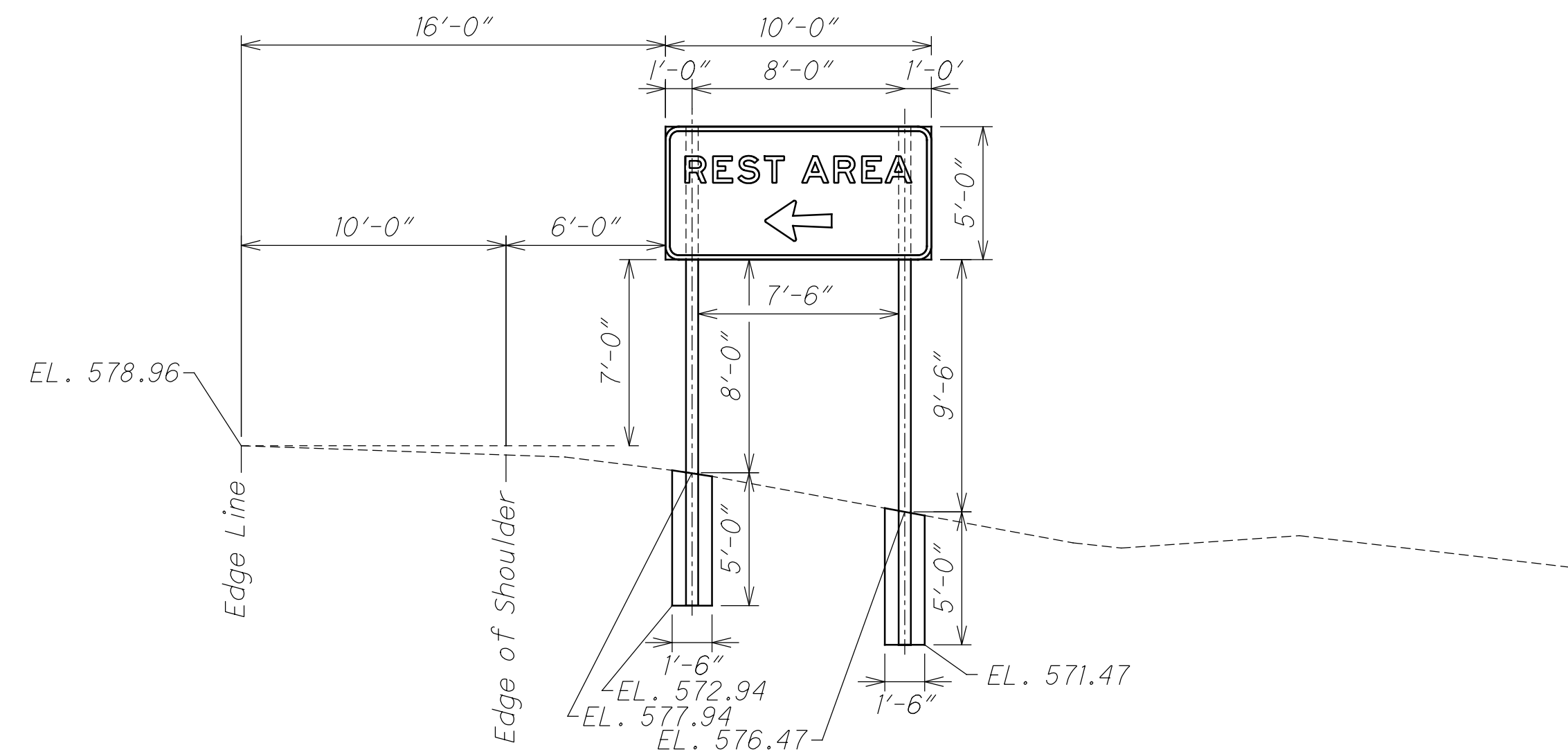
SHEET NO.	REFERENCE NO.	LOCATION	SLM	CODE	SIZE (INCHES)	COLOR, SEE LEGEND, SHEET 2	625					630											631																
							GROUND ROD	OVERHEAD SIGN SUPPORT, TYPE TC-1.2.31, DESIGN 12	OVERHEAD SIGN SUPPORT, TYPE TC-1.6.22, DESIGN 13	SIGN ATTACHMENT ASSEMBLY	SIGN ATTACHMENT ASSEMBLY, MAST ARM	RIGID OVERHEAD SIGN SUPPORT FOUNDATION	RIGID OVERHEAD SIGN SUPPORT FOUNDATION, AS PER PLAN	SIGN SUPPORT ASSEMBLY, POLE MOUNTED	SIGN, FLAT SHEET	SIGN, OVERHEAD EXTRUSHEET	SIGN ERECTED, FLAT SHEET	SIGN ERECTED, EXTRUSHEET	REMOVAL OF GROUND MOUNTED SIGN AND DISPOSAL	REMOVAL OF MAJOR GROUND MOUNTED SIGN AND DISPOSAL	REMOVAL OF OVERHEAD MOUNTED SIGN AND DISPOSAL	REMOVAL OF GROUND MOUNTED STRUCTURAL BEAM SUPPORT AND DISPOSAL	REMOVAL OF OVERHEAD MOUNTED SIGN SUPPORT AND DISPOSAL	REMOVAL OF LUMINAIRE	REMOVAL OF BALLAST	REMOVAL OF SIGNS WIRED	SIGN LIGHTING, MISC.: REMOVAL OF SIGN SERVICE AND DISPOSAL, AS PER PLAN												
							EACH	EACH	EACH	EACH	EACH	EACH	EACH	SQ. FT	SQ. FT	SQ. FT	SQ. FT		EACH	EACH	EACH	EACH	EACH		EACH	EACH	EACH	EACH											
18	120-1	WB SR-120	15.23																						1	1	1	1											
20	2-7	EB SR-2	16.757	R3-5	30 x 36	BLK/W	1		1		1 (A)		1	7.5		7.5																							
				R3-5a	30 x 36	BLK/W								7.5		7.5																							
				D3-h3	96 x 36	W/G								7.5	24	7.5	24																						
				M8-h7	24 x 24	W/G										4		4																					
				M5-1L	21 x 15	W/G										2.2		2.2																					
33	2-26	EB SR-2	23.427	E1-h5p	156 x 30	W/G	1	1	3		1 (C)			32.5		32.5		1	1		2																		
				E1-h3	228 x 120	W/G								190		190																							
42	2-56	WB SR-2	28.095	E1-h5p	108 x 30	W/G	1	1	3		1 (H)			22.5		22.5					2		1																
				E1-h1	180 x 144	W/G								180		180																							
27	2-90	WB SR-2	19.731	E1-h5p	96 x 30	W/G	1	1	3		1 (L)			20		20																							
				E1-h3	228 x 144	W/G								228		228																							
48	53-2	NB SR-53	4.63	E1-h1	132 x 96	W/G			2					88		88					1																		
49	53-5	NB SR-53	5.10	E1-h3	156 x 84	W/G			3					91		91					1																		
49	53-7	NB SR-53	5.29	E1-h3	84 x 72	W/G	1	1	2		1			42		42			1		2																		
49	53-9	SB SR-53	5.30	E1-h3	84 x 72	W/G	1	1	2		1 (M)			42		42			1		2																		
49	53-11	SB SR-53	5.14	E1-h3	84 x 72	W/G	1	1	2		1			42		42			1		2																		
53	163-7	EB SR-163	27.03	E1-h3	144 x 84	W/G			3					84		84					1																		
53	163-8	WB SR-163	27.13	E1-h1	84 x 84	W/G			2					49		49					1																		
TOTALS CARRIED TO GENERAL SUMMARY							7	6	1	25	4	2	5	2	28.7	1135	28.7	1135	1	4	7	8	2	1	1	1	1												

SIGNING SUMMARY - CANTILEVER MOUNTED

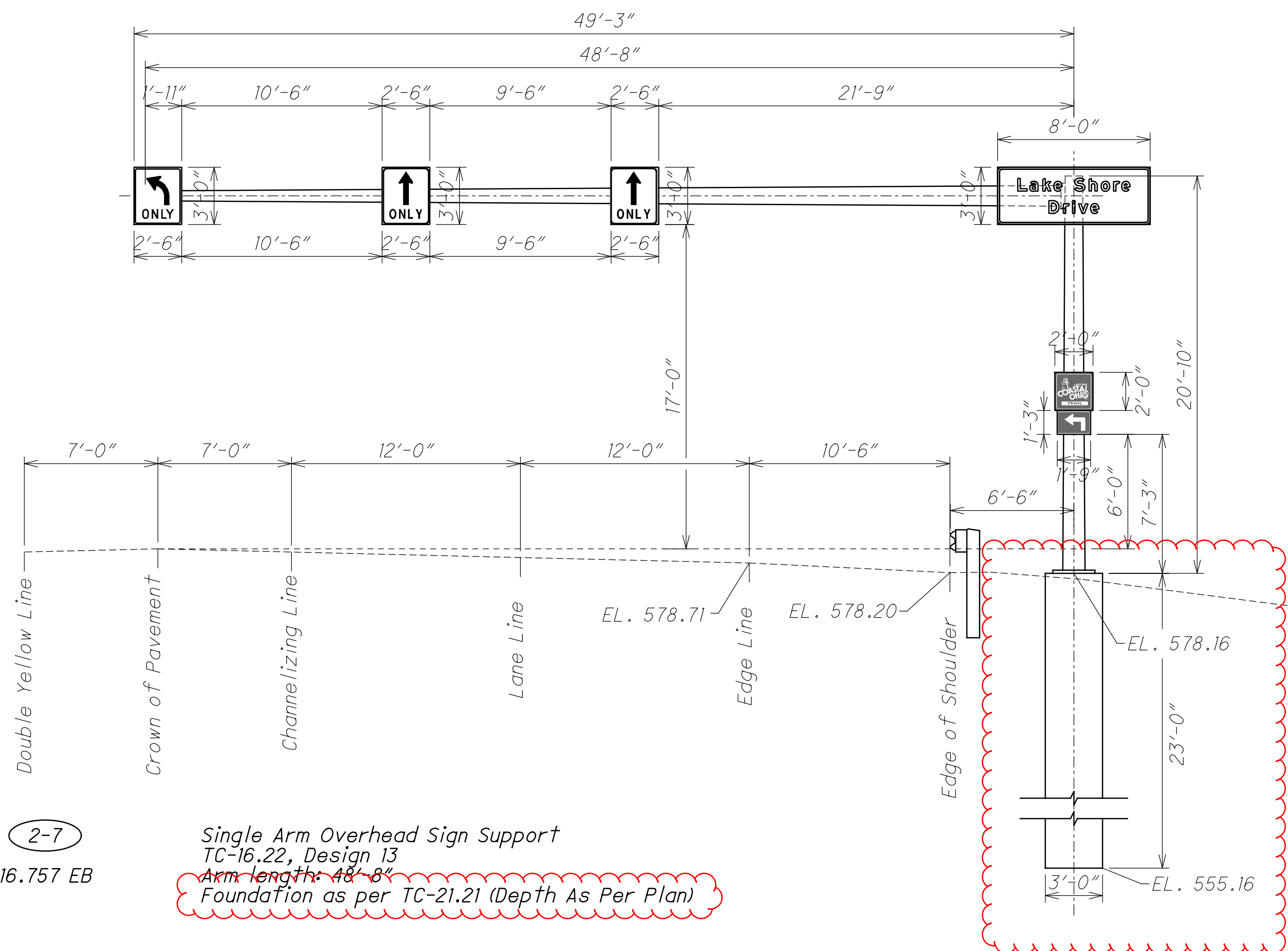
DESIGN AGENCY

 DESIGNER
 ZAP
 REVIEWER
 CDW 11/03/23
 PROJECT ID
 114413
 SHEET TOTAL
 15 88



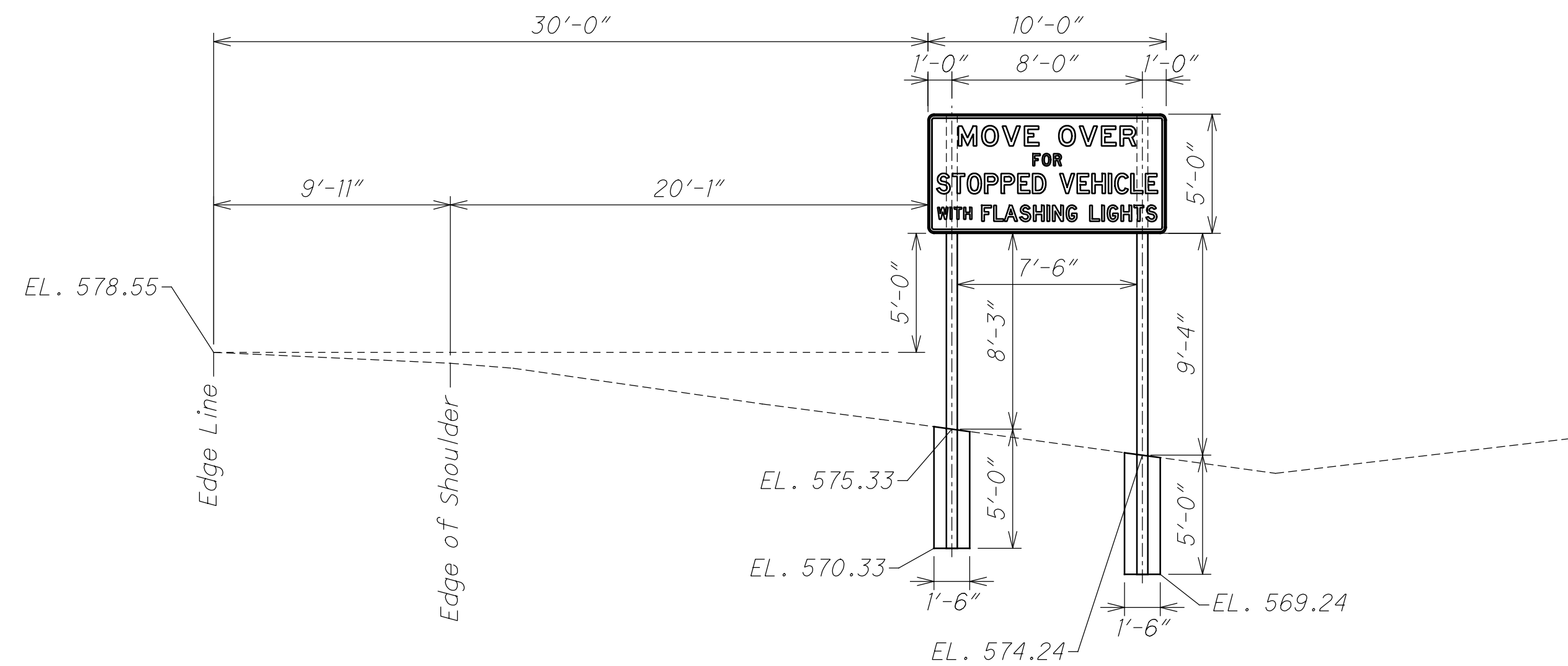
2-1 4x6 Solid Wood Posts 2 each
 16'-2" and 17'-5"
 16.502 EB



2-3 6x8 Solid Wood Posts 2 each
 18'-0" and 19'-6"
 16.540 EB



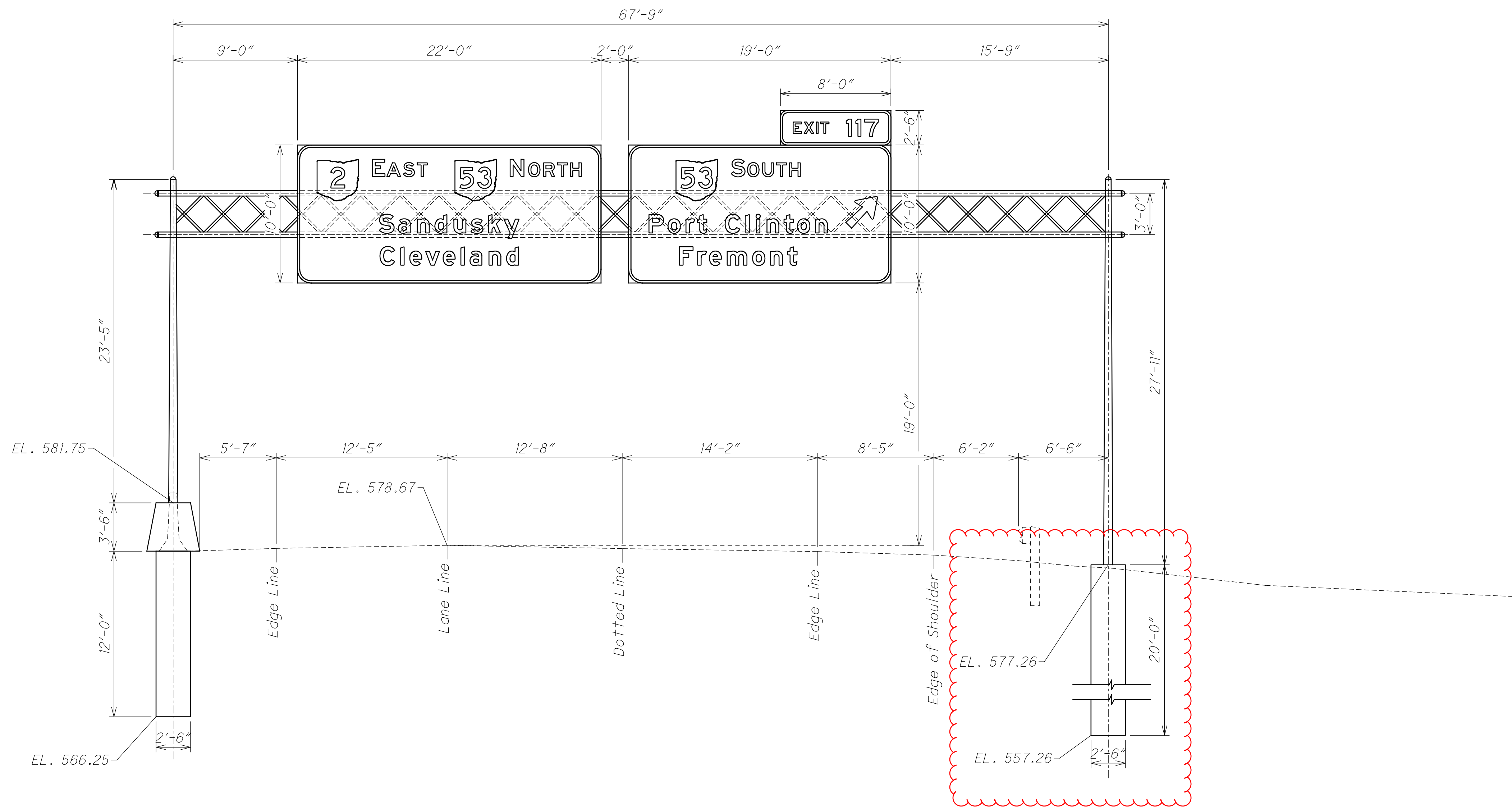
2-7 Single Arm Overhead Sign Support
 TC-16.22, Design 13
 Arm Length: 48'-8"
 Foundation as per TC-21.21 (Depth As Per Plan)
 16.757 EB



2-9 6x8 Solid Wood Posts 2 each
 18'-3" and 19'-4"
 17.201 EB

2-17
 19.474 EB

Steel Truss Overhead Sign Support
 TC-15.116 Design 1
 Truss Length: 67'-9"
 Left End Frame: 23'-5"
 Left Foundation As Per TC-21.50
 Right End Frame: 27'-11"
 Right Foundation As Per TC-21.11 (Depth As Per Plan)



DESIGN AGENCY



DESIGNER

TWB

REVIEWER

CDW 11/03/23

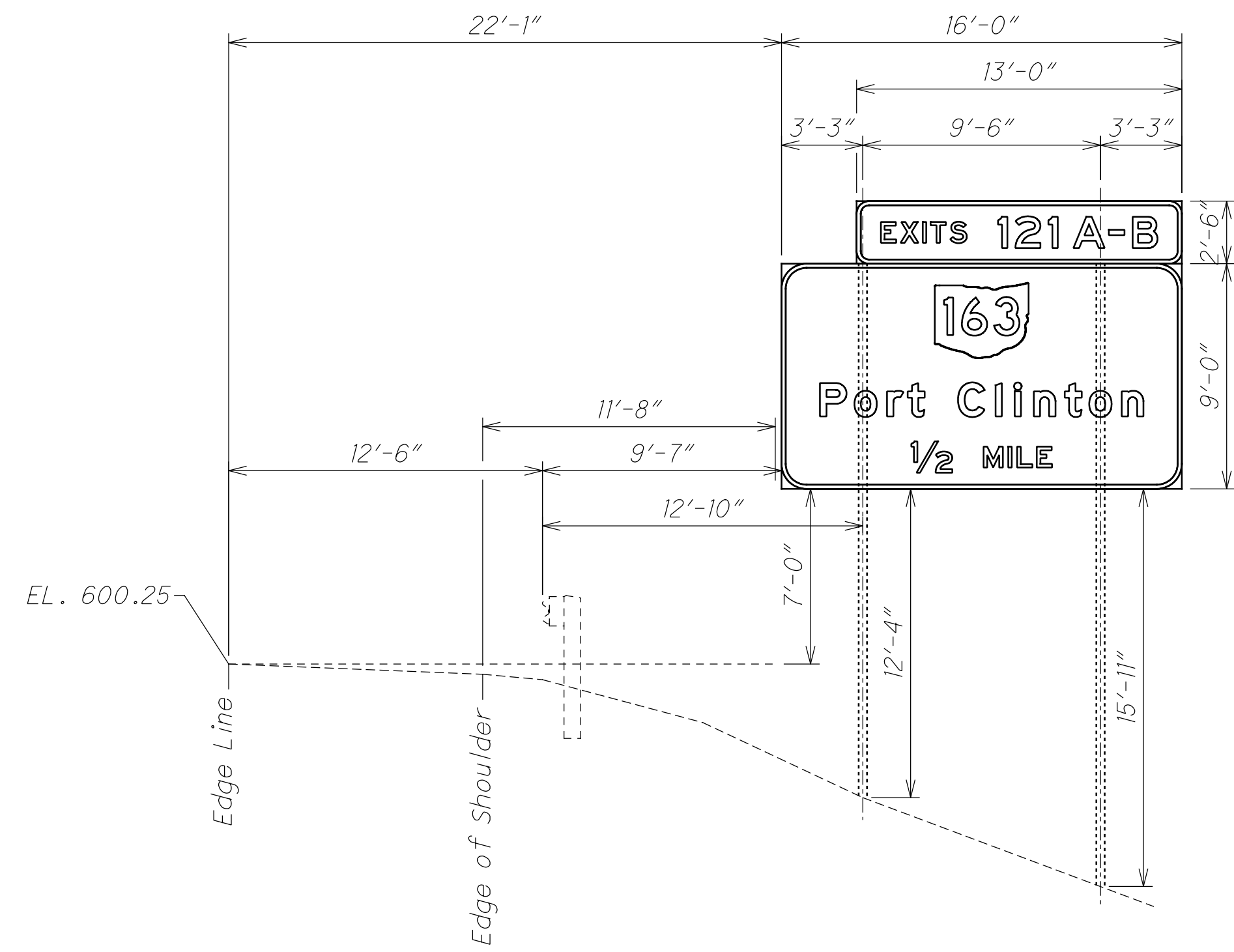
PROJECT ID

114413

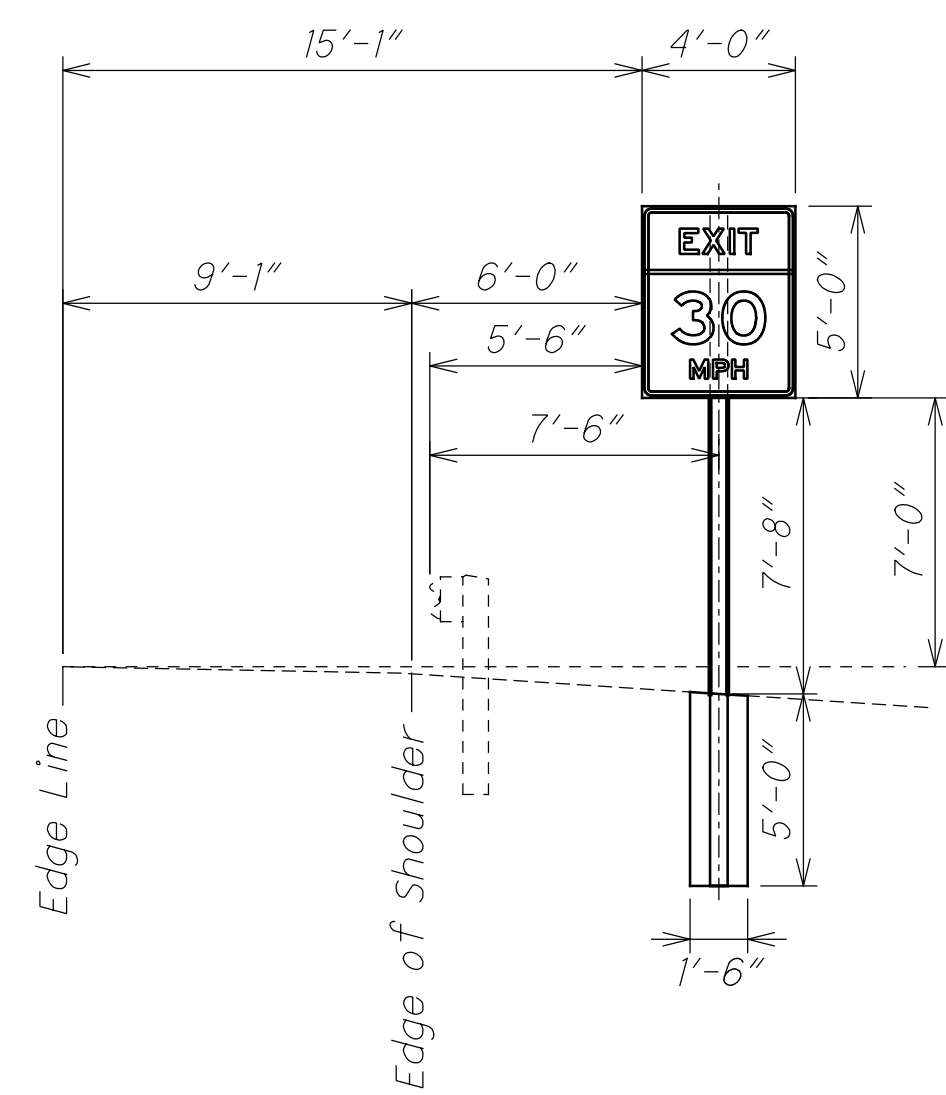
SHEET

TOTAL

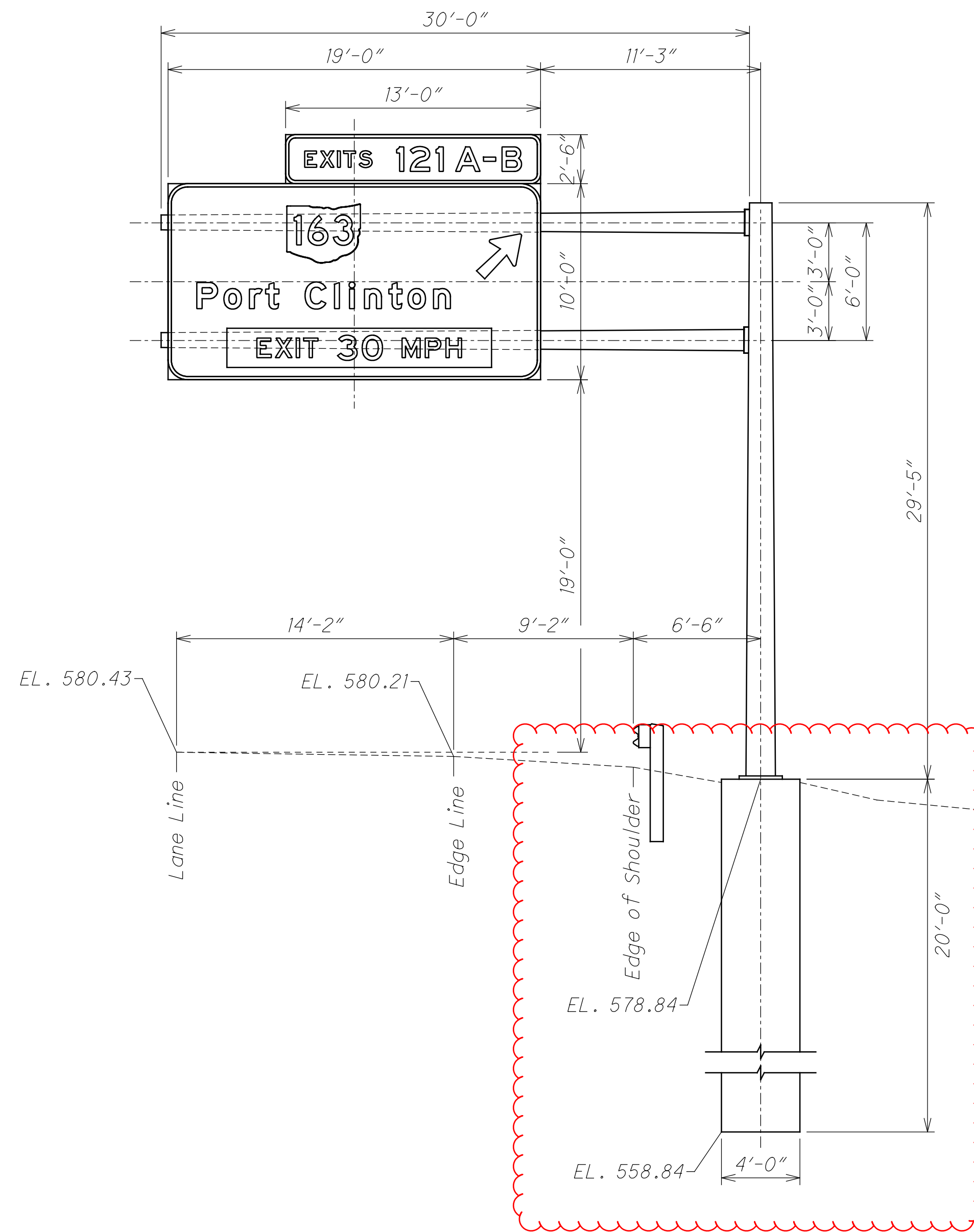
59 | 88



2-25 Existing Beams
22.929 EB

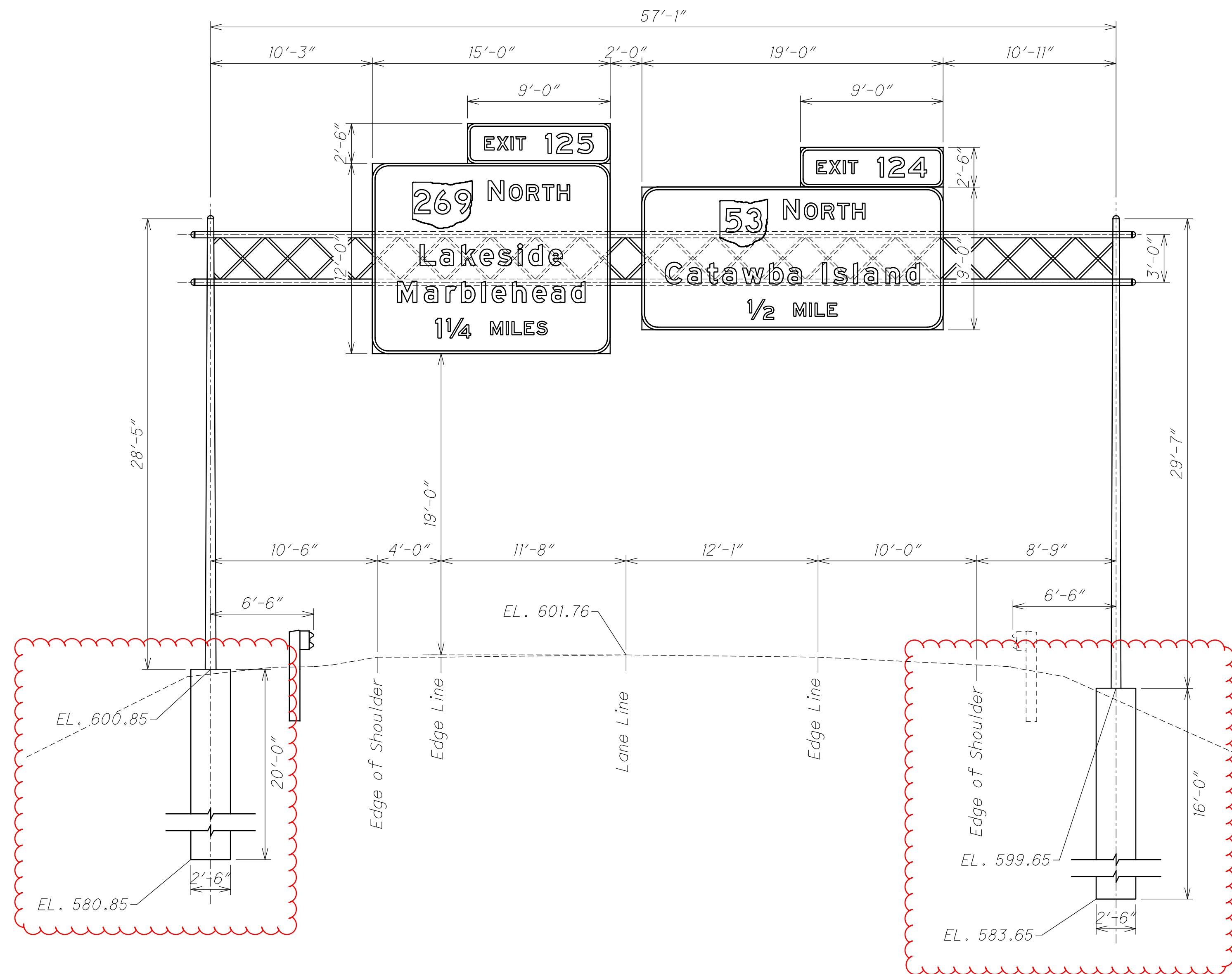


2-28 6x8 Solid Wood Post 1 each
17'-8"
23.503 EB



2-26 Cantilever Overhead Sign Support
TC-12.31 Design 12
Arm Length 30'-0"
Foundation As Per TC-21.21 (Depth As Per Plan)
23.427 EB





2-39
 25.202 EB

Steel Truss Overhead Sign Support
 TC-15.116 Design 1
 Truss Length: 57'-1"
 Left End Frame: 28'-5"
 Right End Frame: 29'-7"
 Left and Right Foundation As Per TC-21.11 TC-21.21 (Depth As Per Plan)

DESIGN AGENCY



DESIGNER

TWB

REVIEWER

CDW 11/03/23

PROJECT ID

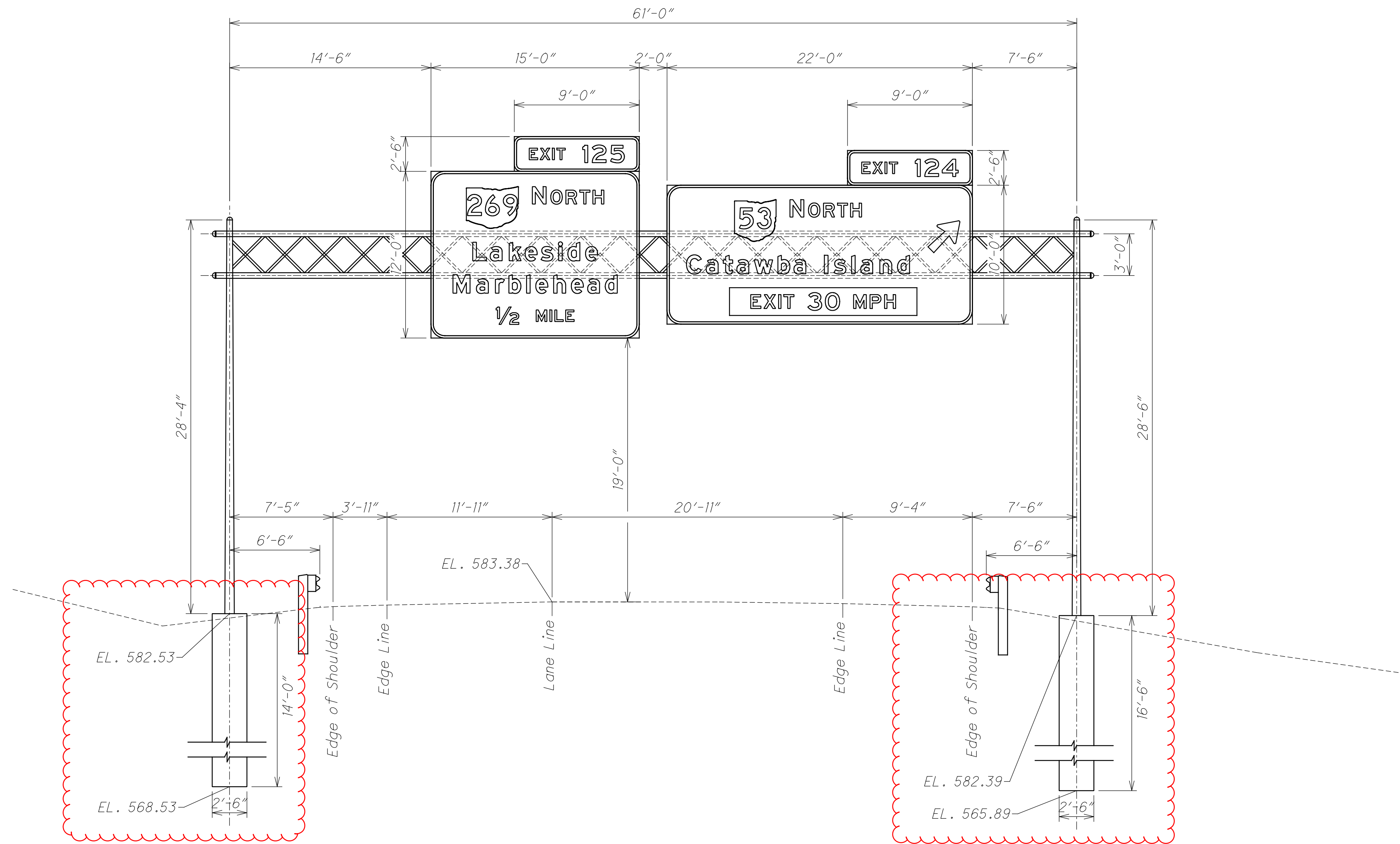
114413

SHEET TOTAL

64 88

2-44
 25.808 EB

Steel Truss Overhead Sign Support
 TC-15.116 Design 1
 Truss Length: 61'-0"
 Left End Frame: 28'-4"
 Right End Frame: 28'-6"
 Left and Right Foundation As Per TC-21.11 (Depth As Per Plan)



DESIGN AGENCY



DESIGNER

TWB

REVIEWER

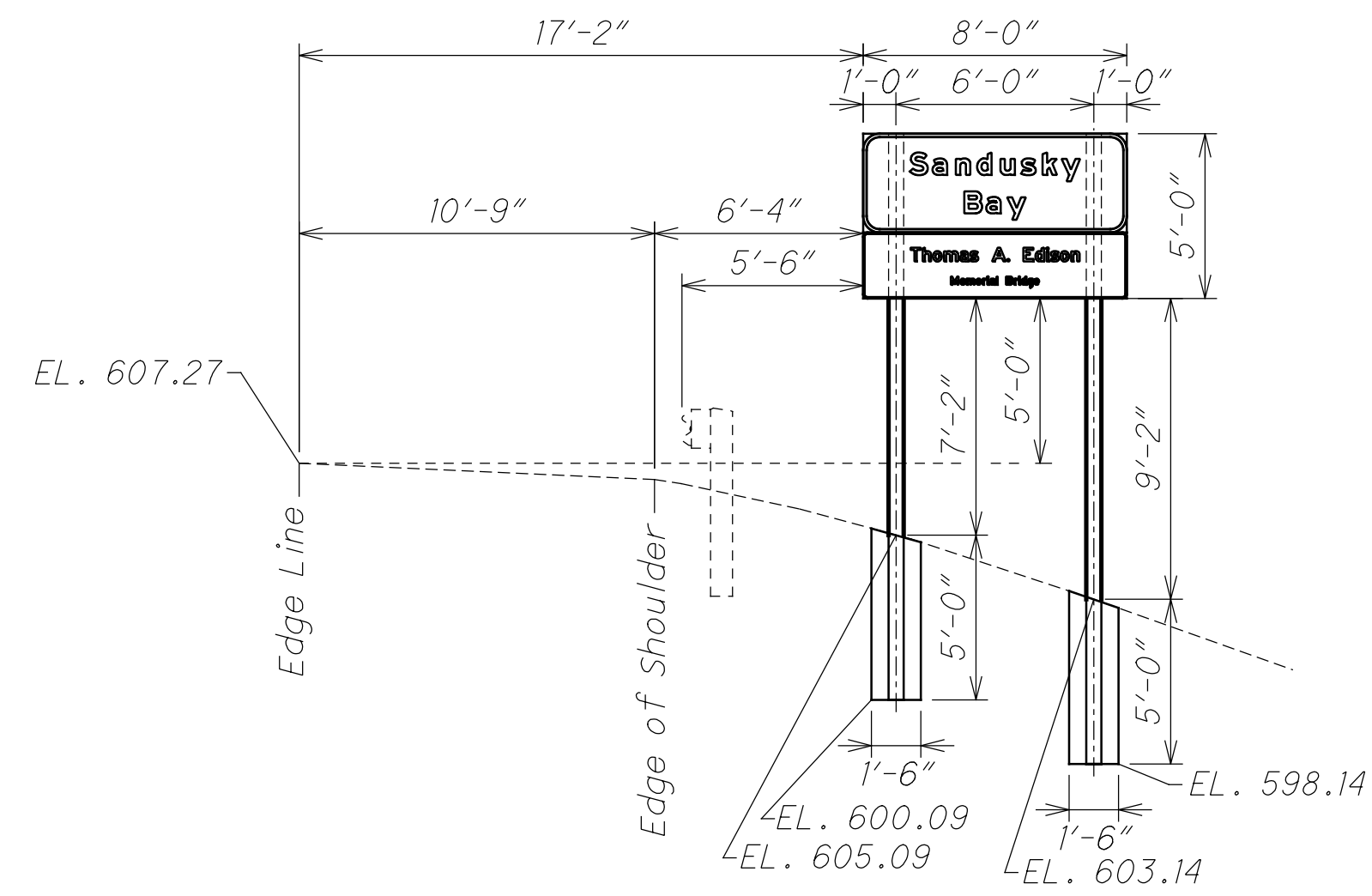
CDW 11/03/23

PROJECT ID

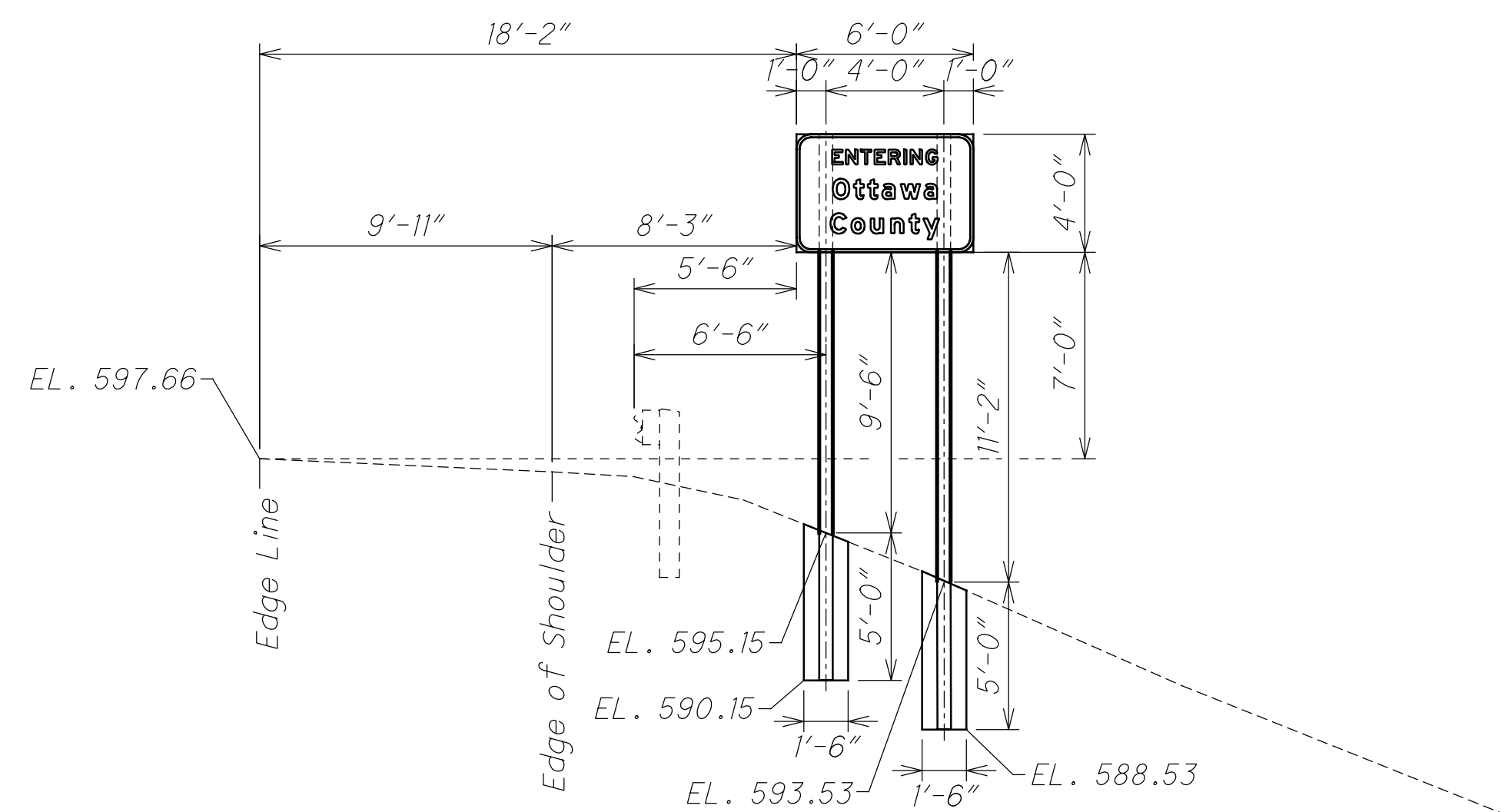
114413

SHEET TOTAL

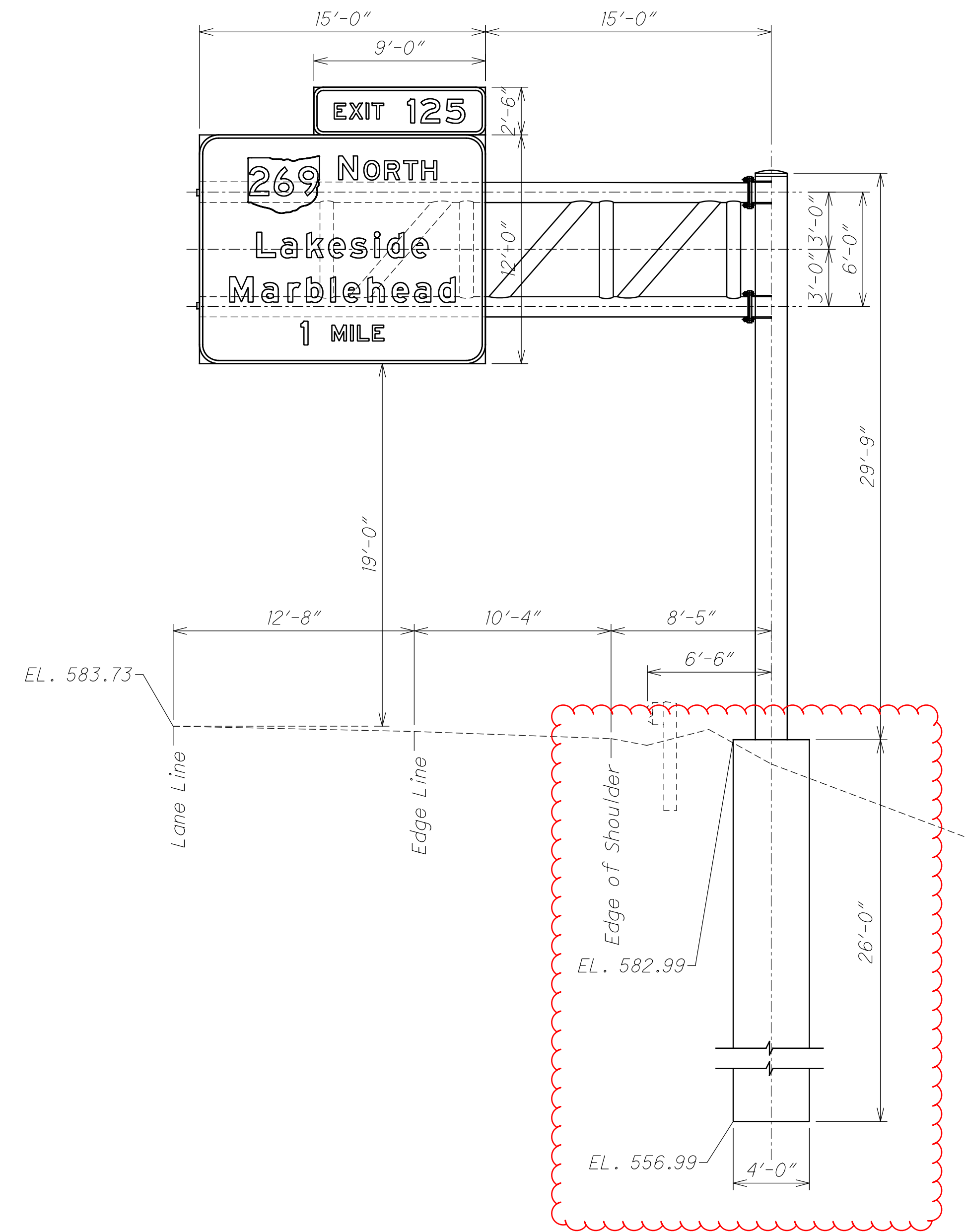
65 88



2-54 6x8 Solid Wood Post 2 each
 17'-2" and 19'-2"
 27.347 EB

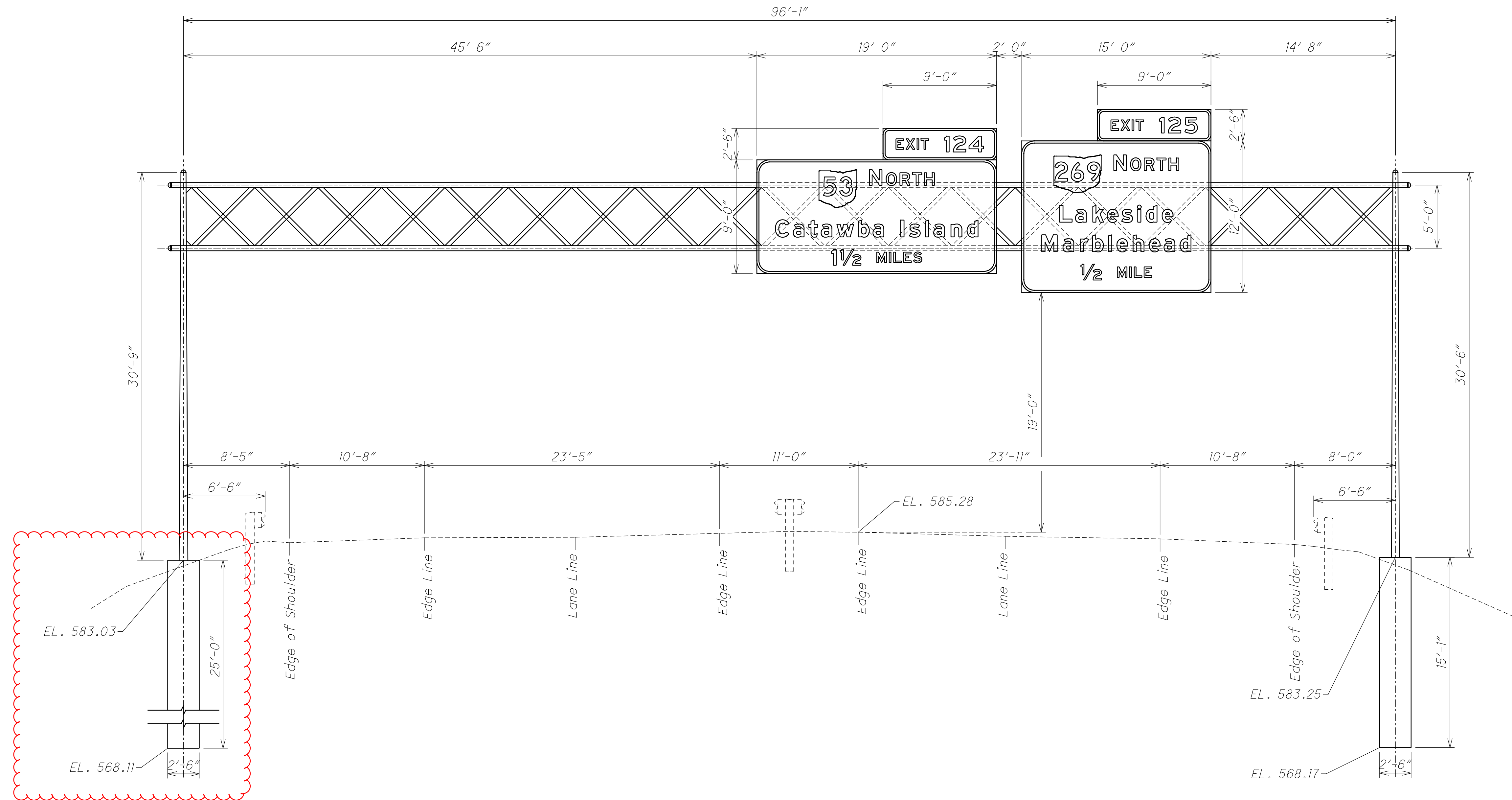


2-55 4x6 Solid Wood Post 2 each
 18'-6" and 20'-2"
 28.365 WB



2-56 Cantilever Overhead Sign Support
 TC-12.31 Design 12
 Arm Length 30'-0"
 Foundation As Per TC-21.21 (Depth As Per Plan)
 28.095 WB





2-58
27.650 WB

Steel Truss Overhead Sign Support
 TC-15.116 Design 2
 Truss Length: 96'-1"
 Left End Frame: 30'-9"
 Left Foundation As Per TC-21.11 (Depth As Per Plan)
 Right End Frame: 30'-6"
 Right Foundation As Per TC-21.11

DESIGN AGENCY



DESIGNER

TWB

REVIEWER

CDW 11/03/23

PROJECT ID

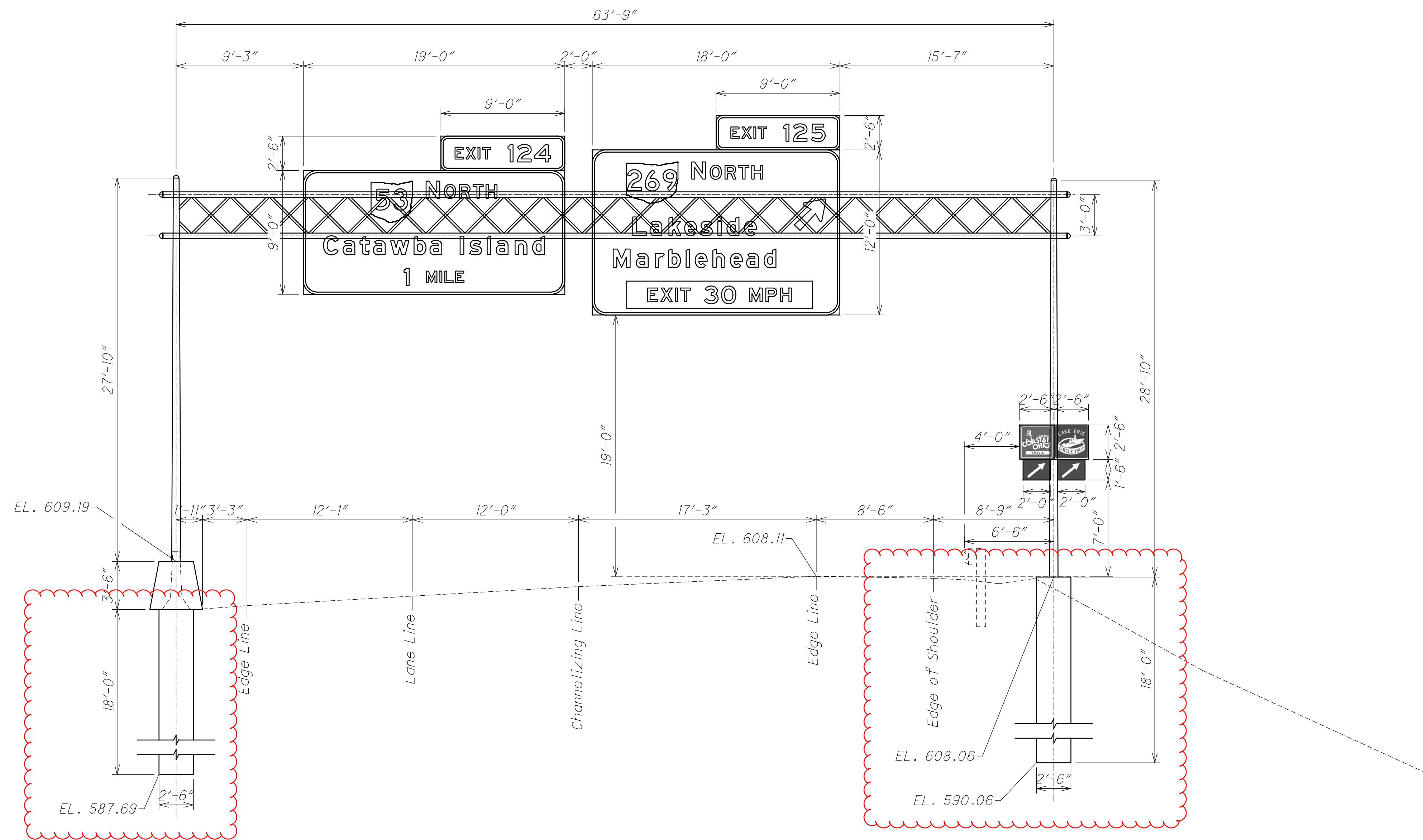
114413

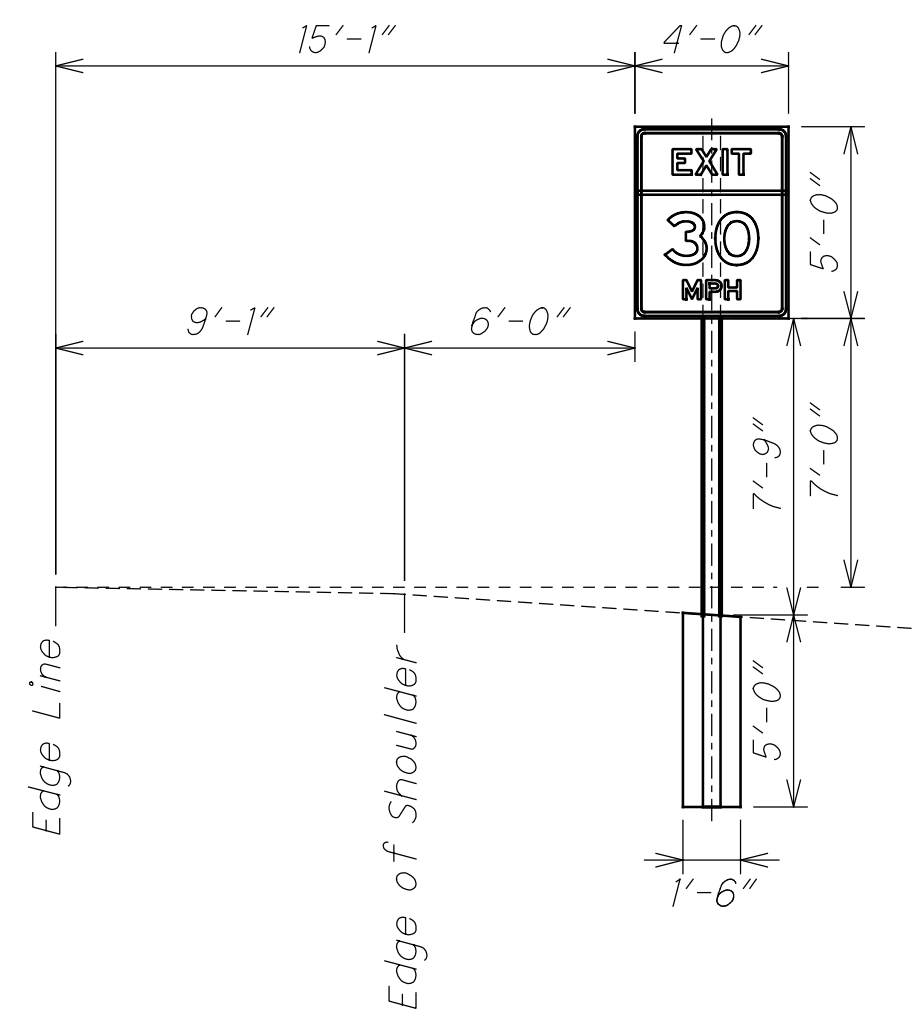
SHEET TOTAL

69 88

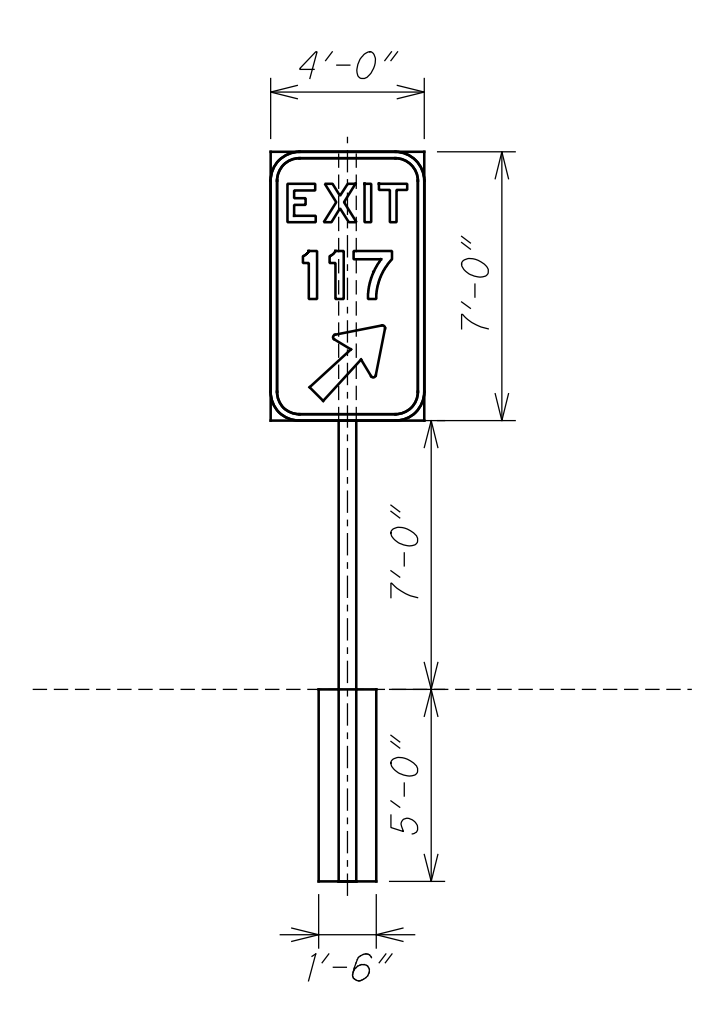
2-63
 27.135 WB

Steel Truss Overhead Sign Support
 TC-15.116 Design 1
 Truss Length: 63'-9"
 Left End Frame: 27'-10"
 Left Foundation As Per TC-21.50 (Depth As Per Plan)
 Right End Frame: 28'-10"
 Right Foundation As Per TC-21.11 (Depth As Per Plan)

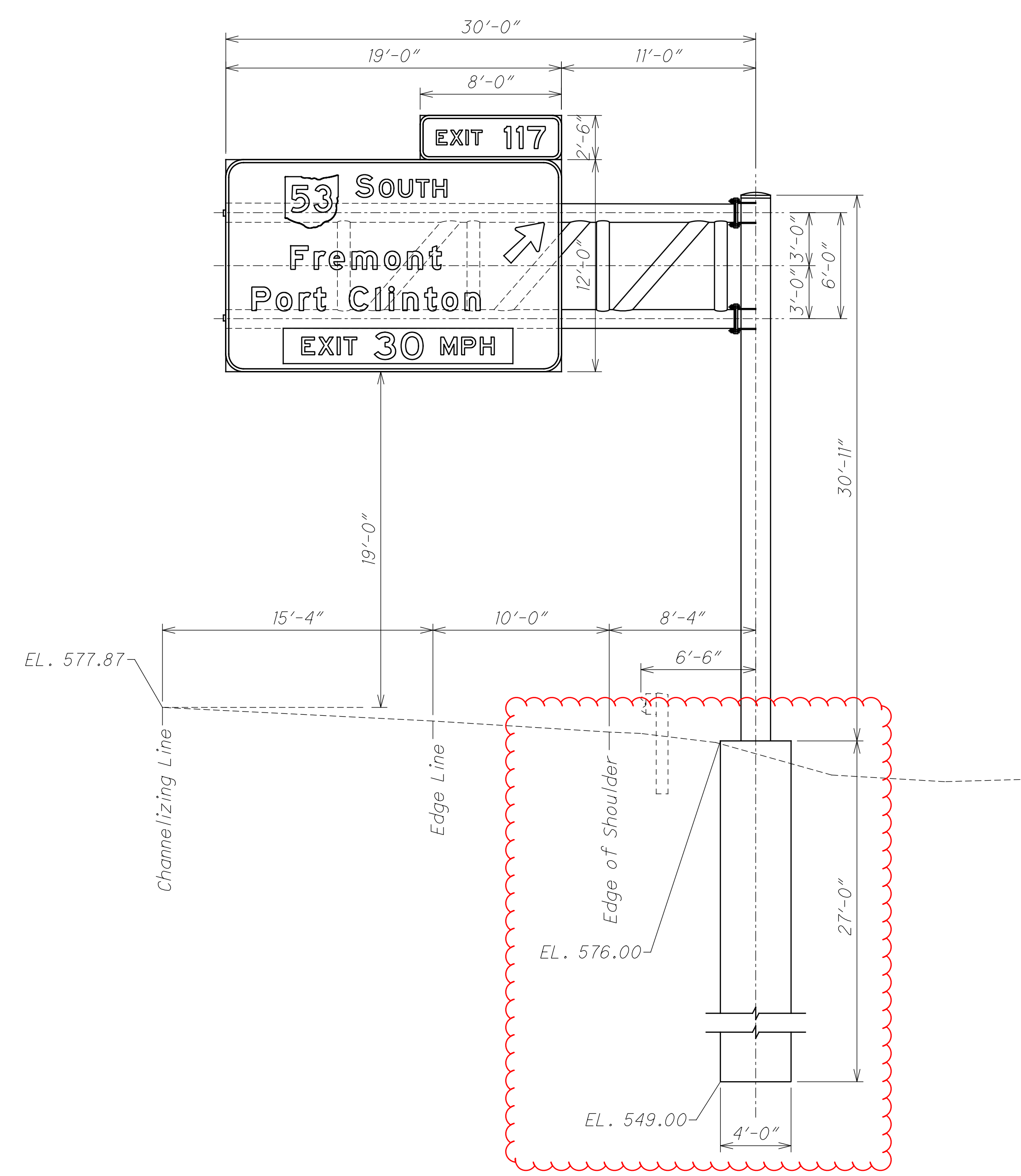




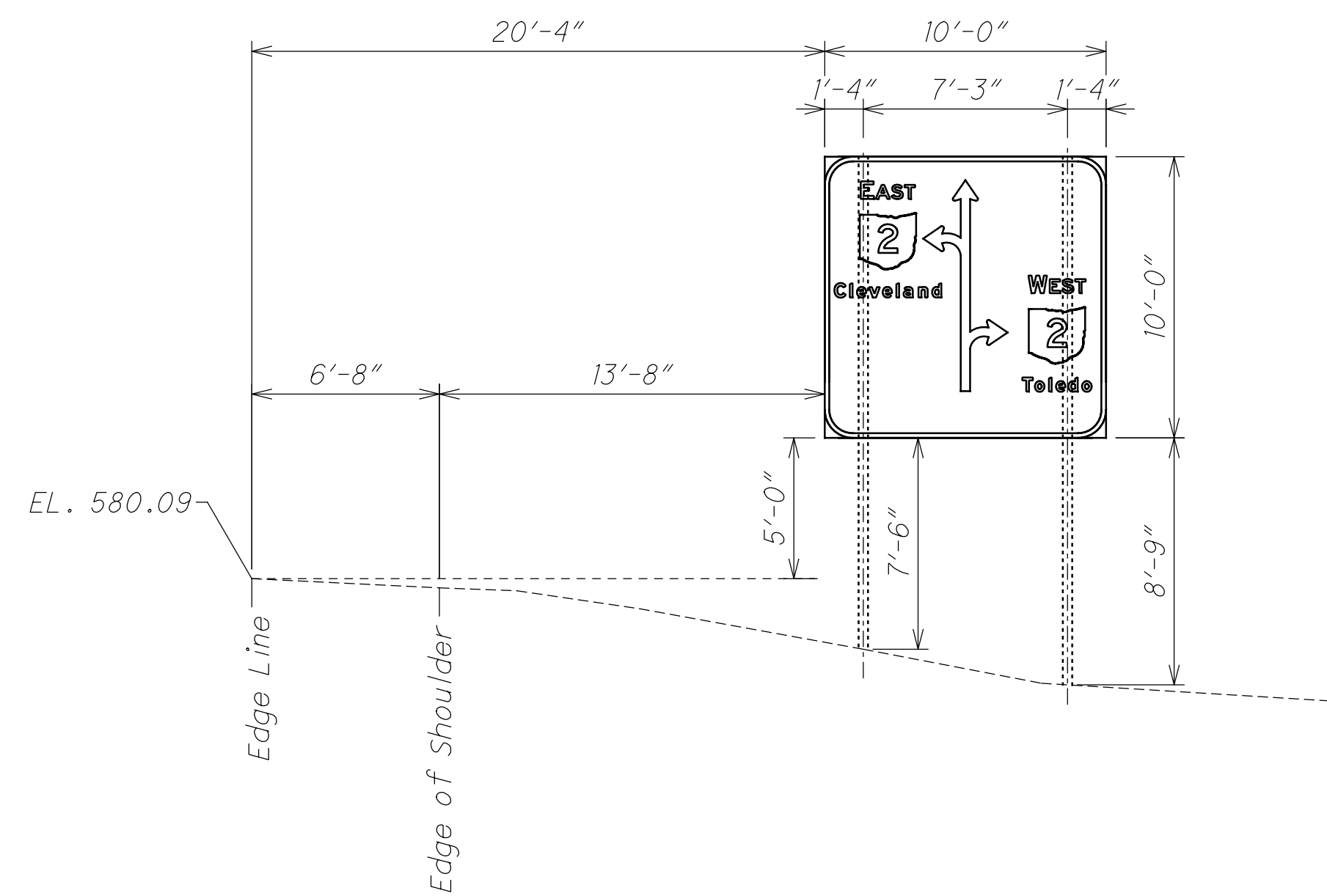
(2-88) 6x8 Solid Wood Posts 1 each
 19.807 WB



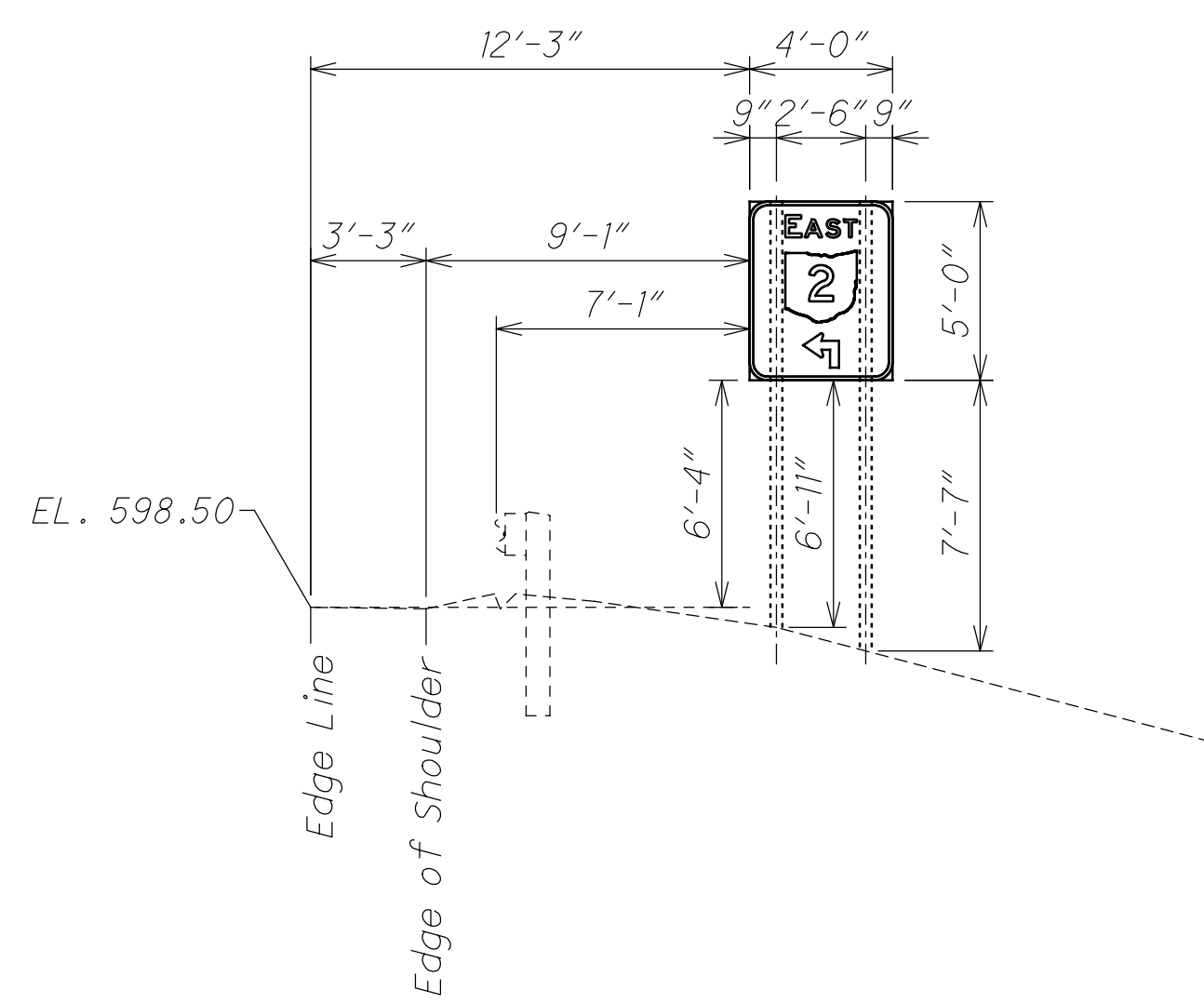
(2-91) 6x8 Solid Wood Post 1 each
 19.675 WB



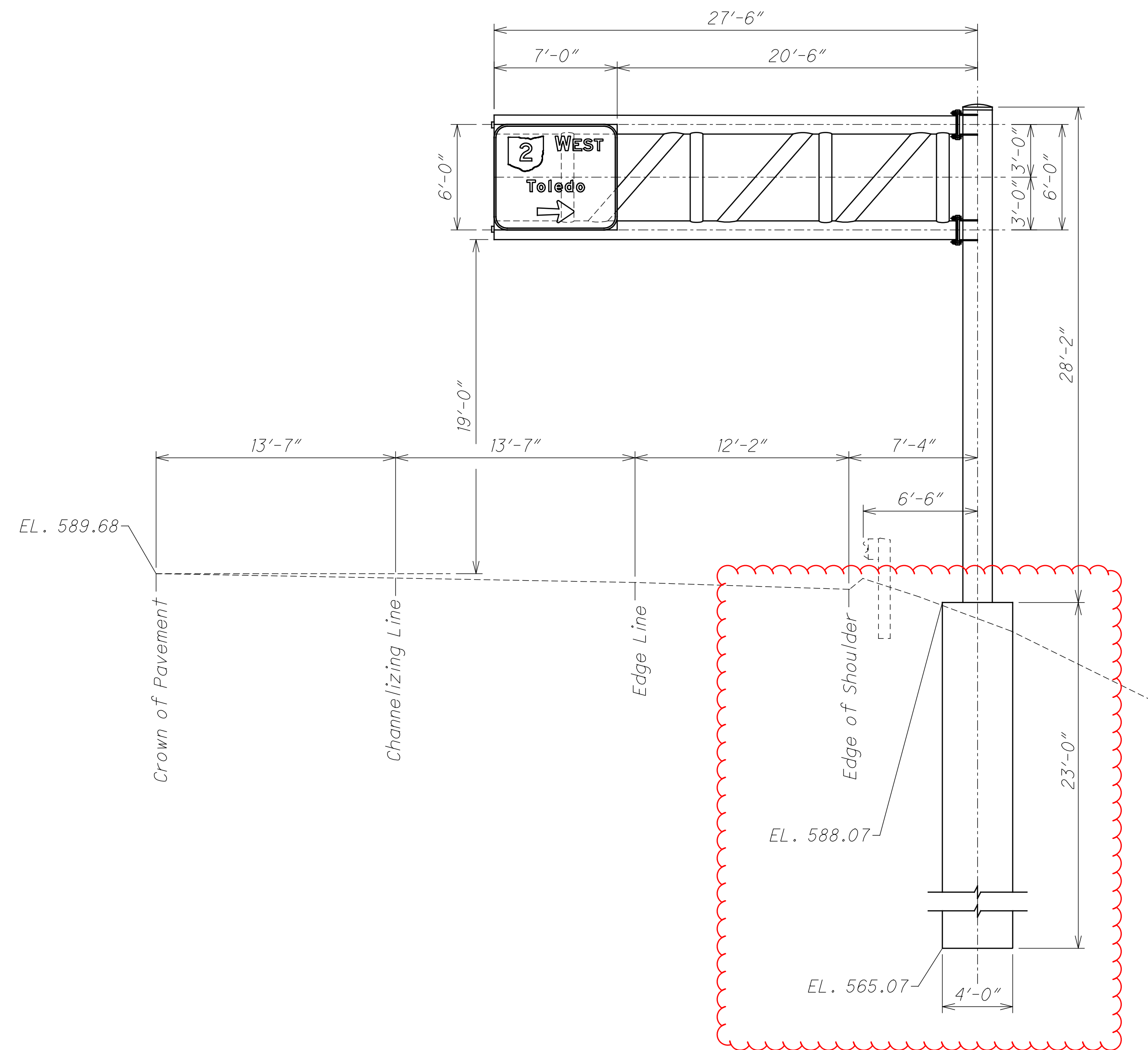
(2-90) Cantilever Overhead Sign Support
 TC-12.31 Design 12
 Arm Length 30'-0"
 Foundation As Per TC-21.21 (Depth As Per Plan)
 19.731 WB



53-8 Existing Beams
 5.37 SB



53-10 Existing Beams
 5.23 SB



53-9 Cantilever Overhead Sign Support
 TC-12.31 Design 12
 Arm Length: 27'-6"
 Foundation As Per TC-21.21 (Depth As Per Plan)