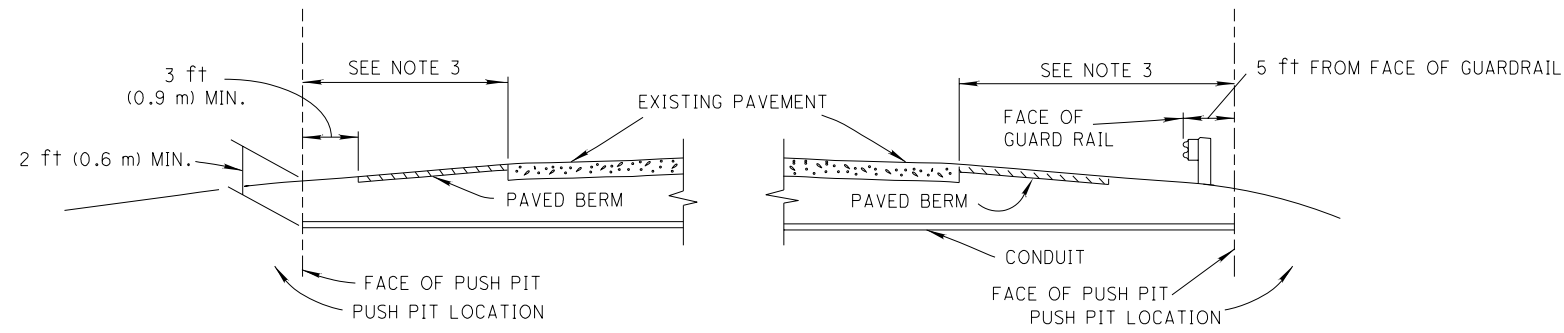


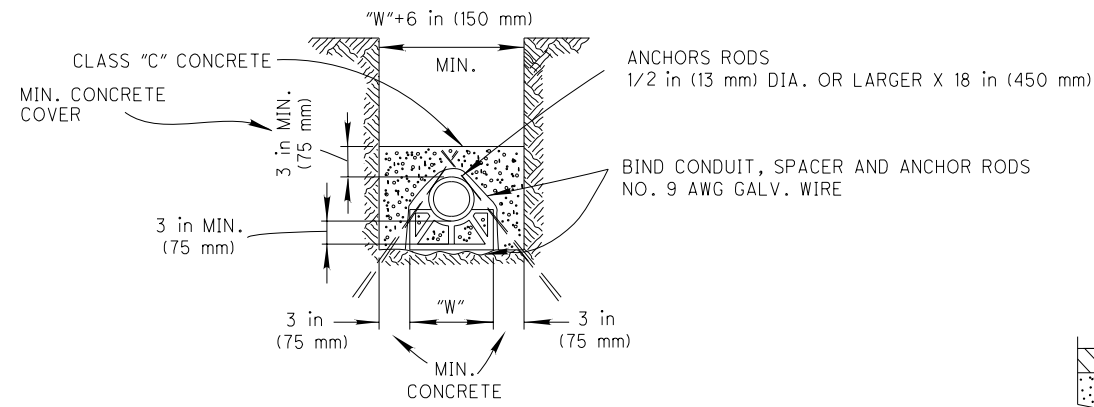
DATE: 19-Nov-09 10:50
 FILE: J:\Job\6087 MAH-170-4.80\Plan_Sheet\ODOT STD.DWG_HL3022.dgn
 SCALE: 1 = 10'



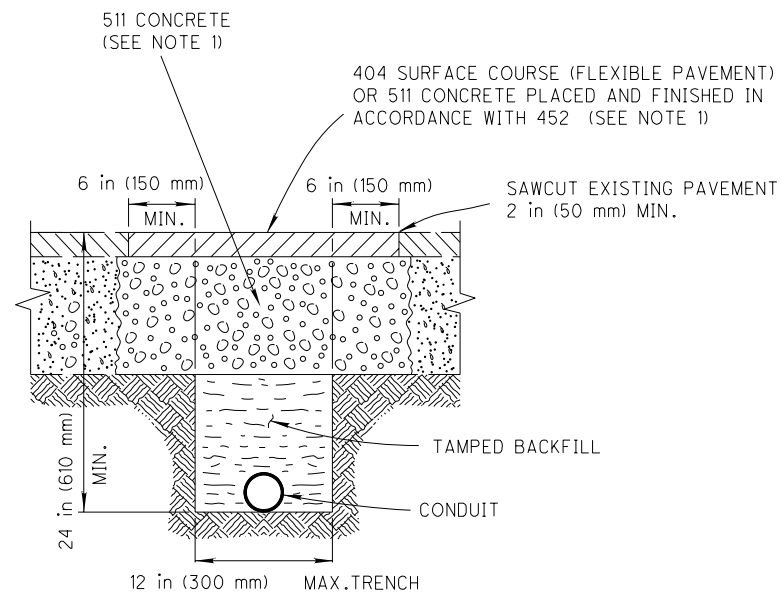
CONDUIT JACKED UNDER PAVEMENT

NOTES

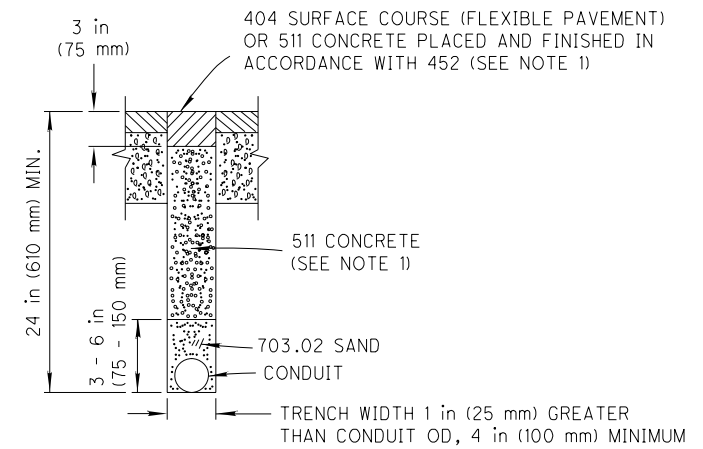
1. Replacement of disturbed flexible pavement shall consist of a 511 concrete subcourse with a 404 surface course. Replacement of rigid pavement shall consist of a 511 concrete course with surface finished in accordance with 452.
2. Restore disturbed facilities and surfaces to a condition equal to that existing before the work started.
3. When undermining shoulder areas that do not have paved berms, provide 3/4 inch (19 millimeter) thick steel surface plates, corrugated pipe sleeves, shoring or other approved means to prevent cave-in.
4. When conduit is jacked or drilled under divided pavements, cable may be installed in a trench through the median area when specified in the plans.



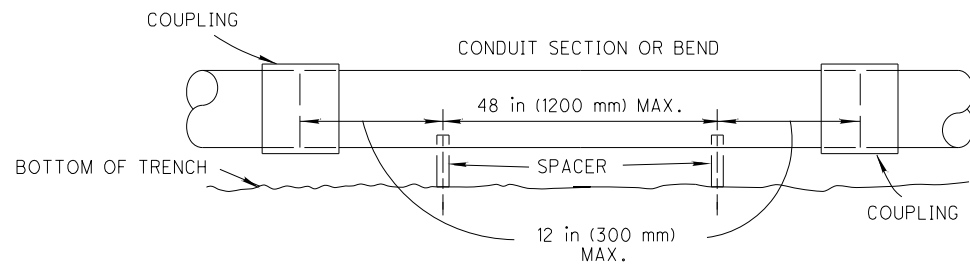
TRENCH SECTION



"T" TRENCH IN PAVED AREA



NARROW SLIT TYPE TRENCH IN PAVED AREA



SIDE ELEVATION

CONCRETE ENCASED CONDUIT

04-17-09

ROADWAY CONDUIT DETAILS II

OFFICE OF TRAFFIC ENGINEERING

HL - 30.22

1 / 1

ODOT STANDARD CONSTRUCTION DRAWINGS

MAH-170-4.80

12
14

CALCULATED
MJT
CHECKED
DTB