

ODOT Dist 4 - Mahoning County - FINAL
No Passing Zone Log (MAH)

Route: **0165R (SMAHSR00165**C)**
 Length: **25.892** Direction: **East**

From: **0.000 LEAVE COL CO**
 To: **25.892 ENTER COL CO**

Length	Left	C/L	Right	Length	Control Points	Scale: 1.00 mile/page
	22.000		22.000			
0.244				0.244	21.965 Mile Post = 022	
	21.756		21.756		21.753 T0026 SOUTH RANGE LT 21.752 S0626R LT	
			21.749			
				0.201		
			21.548			
					21.434 BRIDGE	
	21.082					
0.082						
	21.000					

ODOT District 4
No Passing Zone Log (MAH)

23 20

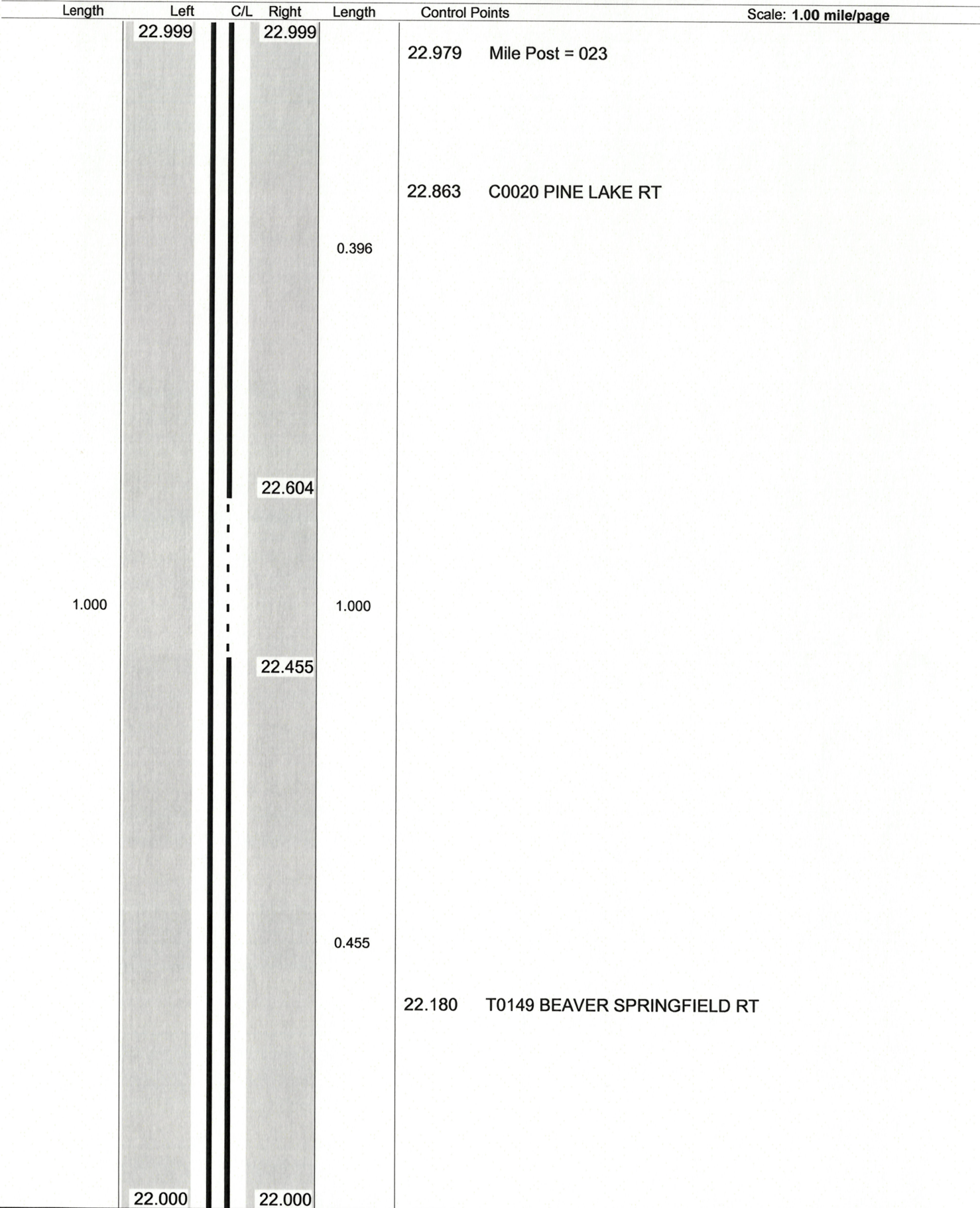
Route: 0165R (SMAHSR00165**C)

Length: 0.999

Direction: East

From: 22.000 LEAVE COL CO

To: 22.999 ENTER COL CO



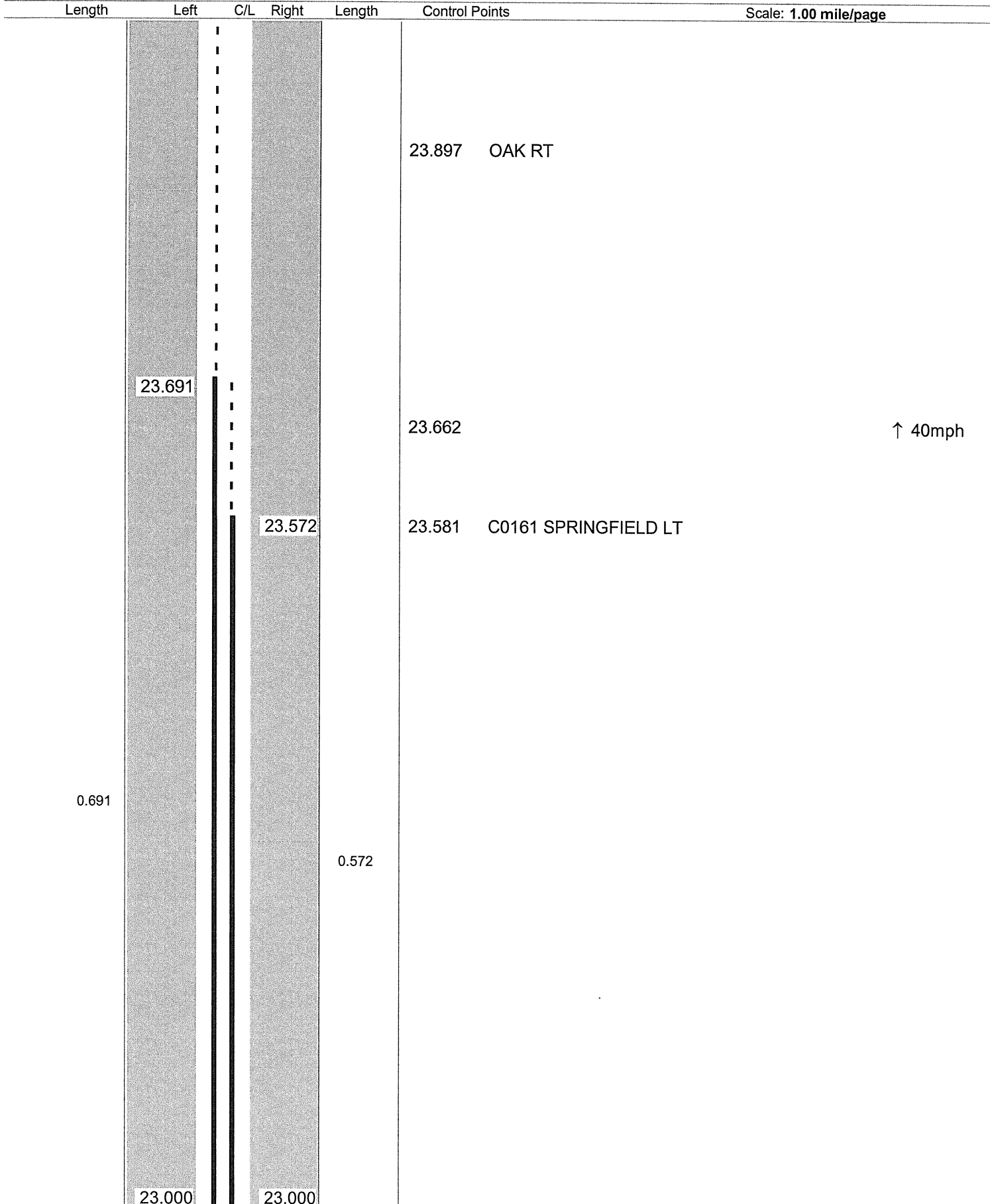
ODOT Dist 4 - Mahoning County - FINAL
No Passing Zone Log (MAH)

Route: 0165R (SMAHSR00165**C)

From: 0.000 LEAVE COL CO

Length: 25.892 Direction: East

To: 25.892 ENTER COL CO



ODOT Dist 4 - Mahoning County - FINAL
No Passing Zone Log (MAH)

Route: 0165R (SMAHSR00165**C)
 Length: 25.892 Direction: East

From: 0.000 LEAVE COL CO
 To: 25.892 ENTER COL CO

Length	Left	C/L	Right	Length	Control Points	Scale: 1.00 mile/page
	24.987				24.995 Mile Post = 025	
					24.891 C0167 / T0167 BEARD	
0.467			24.817			
	24.520				24.564 S0617R	
				0.760	24.433	↑ 55mph
	24.290				24.290 T1263 MAPLE RT	
0.152					24.213 C0062 COLUMBIANA	
	24.138				24.134 C0062 GRANT RT	
			24.057			

**ODOT District 4
No Passing Zone Log (MAH)**

26 26

Route: 0165R (SMAHSR00165**C)

From: 25.000 LEAVE COL CO

Length: 0.892 Direction: East

To: 25.892 ENTER COL CO

Scale: 1.00 mile/page

