
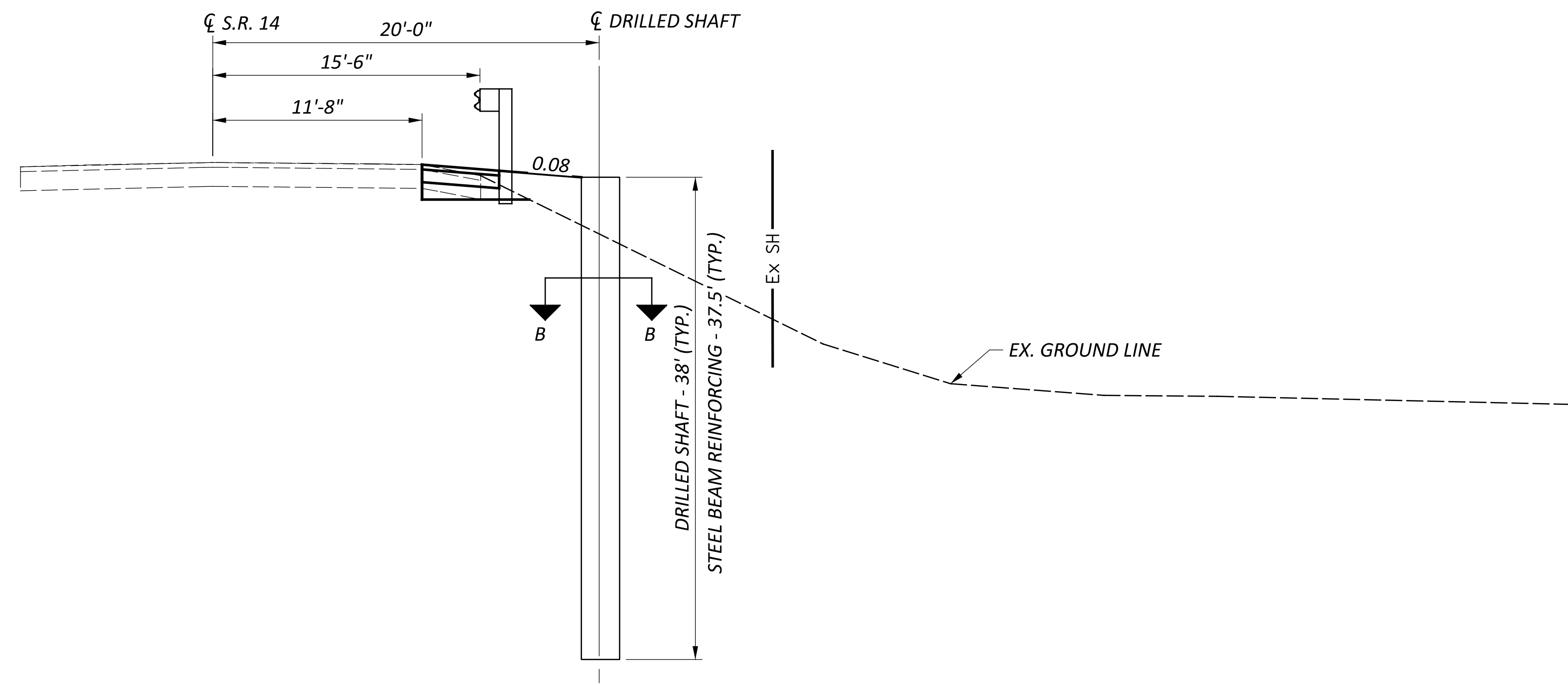


SHEET NUM.												PART.	ITEM	ITEM	GRAND	UNIT	DESCRIPTION	SEE SHEET NO.					
2	3	4	5	8	17	18	19	01/55K/06	EXT	TOTAL													
ROADWAY																							
LS								LS	201	11000	LS		CLEARING AND GRUBBING										
				350				350	202	38000	350	FT	GUARDRAIL REMOVED										
						74		74	203	10000	74	CY	EXCAVATION										
						128		128	203	20000	128	CY	EMBANKMENT										
				350				350	606	15050	350	FT	GUARDRAIL, TYPE MGS										
	LS							LS	SPECIAL	69091000	LS		AS-BUILT CONSTRUCTION PLANS	3									
	LS							LS	SPECIAL	69098400	LS		SURVEY CONTROL VERIFICATION	3									
EROSION CONTROL																							
2								2	659	00100	2	EACH	SOIL ANALYSIS TEST										
53								53	659	00300	53	CY	TOPSOIL										
472								472	659	10000	472	SY	SEEDING AND MULCHING										
0.1								0.1	659	20000	0.1	TON	COMMERCIAL FERTILIZER										
0.1								0.1	659	31000	0.1	ACRE	LIME										
2.54								2.54	659	35000	2.54	MGAL	WATER										
								3,000	832	30000	3,000	EACH	EROSION CONTROL										
PAVEMENT																							
							307	307	252	01500	307	FT	FULL DEPTH PAVEMENT SAWING										
							32	32	301	56010	32	CY	ASPHALT CONCRETE BASE, PG64-28, (449)	19									
							8	8	407	20000	8	GAL	NON-TRACKING TACK COAT										
							12	12	441	70100	12	CY	ASPHALT CONCRETE SURFACE COURSE, TYPE 1, (449), PG70-22M	19									
TRAFFIC CONTROL																							
				7				7	626	00110	7	EACH	BARRIER REFLECTOR, TYPE 2 (BIDIRECTIONAL)										
				9				9	630	02100	9	FT	GROUND MOUNTED SUPPORT, NO. 2 POST										
				1				1	630	08600	1	EACH	SIGN POST REFLECTOR										
				1.5				1.5	630	80100	1.5	SF	SIGN, FLAT SHEET										
				1				1	630	84900	1	EACH	REMOVAL OF GROUND MOUNTED SIGN AND DISPOSAL										
				1				1	630	86002	1	EACH	REMOVAL OF GROUND MOUNTED POST SUPPORT AND DISPOSAL										
							0.06	0.06	642	00104	0.06	MILE	EDGE LINE, 6", TYPE 1										
RETAINING WALLS (001)																							
1								1	SPECIAL	20307502	1	EACH	INCLINOMETER	2									
							2,850	2,850	507	00400	2,850	FT	STEEL PILES, MISC.: W16X26 STEEL BEAM, FURNISHED	2									
							2,888	2,888	524	94503	2,888	FT	DRILLED SHAFTS, 24" DIAMETER, ABOVE BEDROCK, AS PER PLAN	2									
							1,140	1,140	524	95000	1,140	FT	DRILLED SHAFTS, MISC.: PLUG PILES, 24" DIAMETER, UNREINFORCED	2									
MAINTENANCE OF TRAFFIC																							
	LS							LS	614	12420	LS		DETOUR SIGNING										
	10							10	614	13000	10	CY	ASPHALT CONCRETE FOR MAINTAINING TRAFFIC										
			2					2	614	18601	2	SNMT	PORTABLE CHANGEABLE MESSAGE SIGN, AS PER PLAN	5									
INCIDENTALS																							
								LS	614	11000	LS		MAINTAINING TRAFFIC										
								LS	623	10000	LS		CONSTRUCTION LAYOUT STAKES AND SURVEYING										
								LS	624	10000	LS		MOBILIZATION										

GENERAL SUMMARY

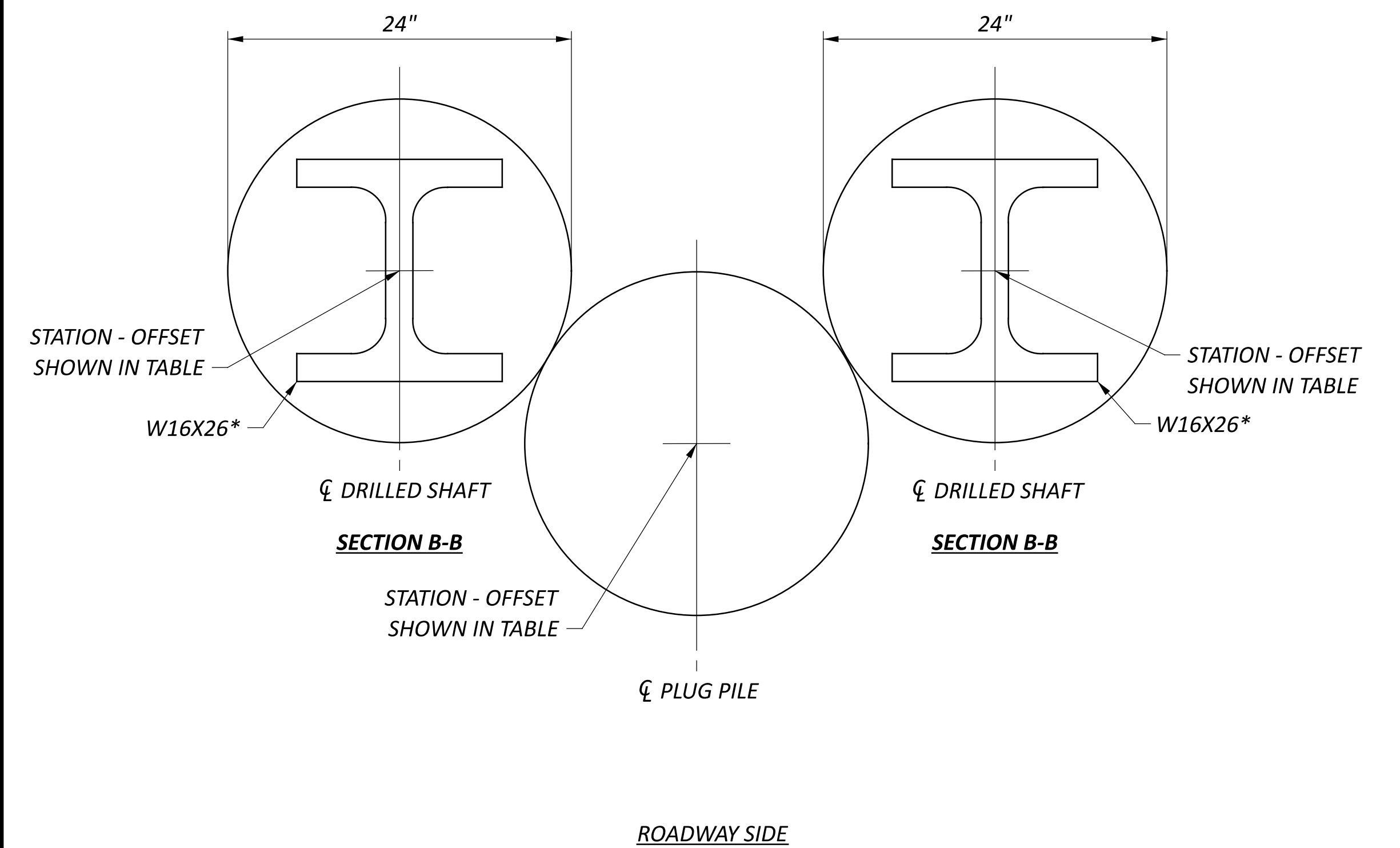
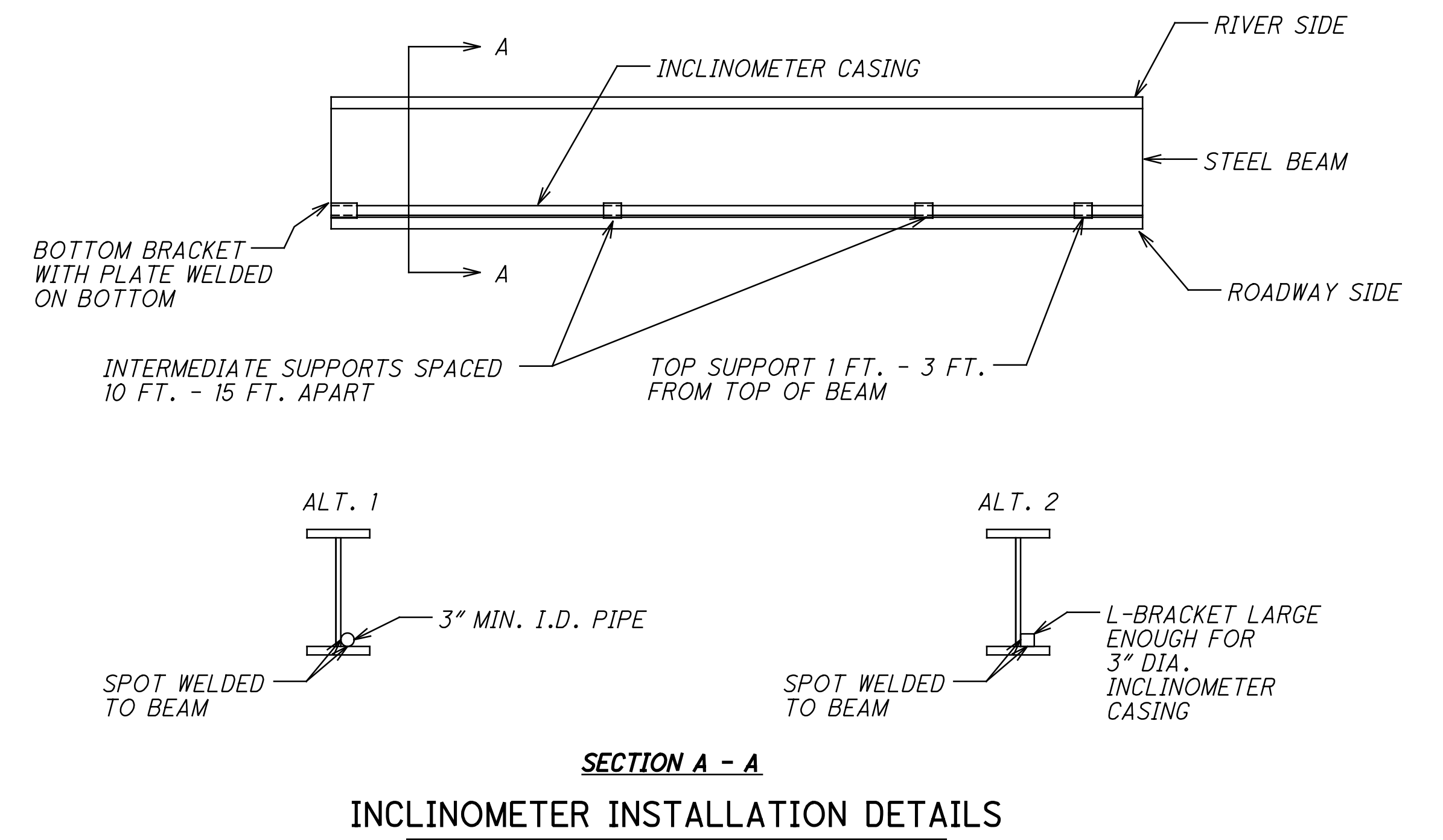
DESIGN AGENCY

 DESIGNER: JRF
 REVIEWER: JRP
 TJP 12-11-23
 PROJECT ID: 118744
 SHEET: P.7 TOTAL: 28



SHOULDER RESTORATION

THE FOLLOWING QUANTITIES HAVE BEEN PROVIDED FOR PAVEMENT RESTORATION AFTER THE INSTALLATION OF THE DRILLED SHAFTS.

- STA. 101+50.00 TO STA. 104+50.00
- ITEM 252 - FULL DEPTH PAVEMENT SAWING, 307 FT
- ITEM 301 - ASPHALT CONCRETE BASE, PG64-28, (449), (T=8"), 32 CU YDS.
- ITEM 407 - NON-TRACKING TACK COAT (@0.06 GAL/SY), 8.0 GAL.
- ITEM 441 - ASPHALT CONCRETE SURFACE COURSE, TYPE 1 (449), PG70-22M, (T=3"), 12 CU. YDS. (PLACED IN 2 LIFTS OF 1.5")
- ITEM 642 - EDGE LINE, 6", TYPE 1, 0.06 MILE



*STEEL BEAM REINFORCING CENTERED AT THE DRILLED SHAFT