
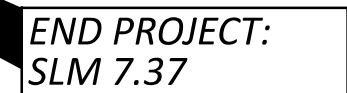


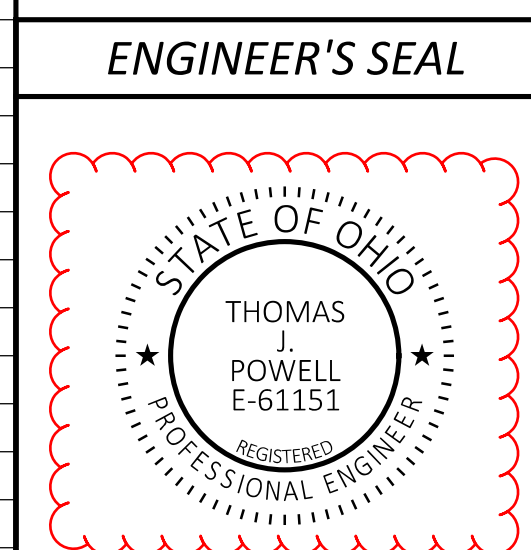
FOR PART 1, SEE MAH-680-4.58 PART 1




SEE PART 1

| | |
|-------------------------------|-------------------|
| <i>TITLE SHEET</i> | <i>P.1</i> |
| <i>GENERAL NOTES</i> | <i>P.2</i> |
| <i>MAINTENANCE OF TRAFFIC</i> | <i>P.3 - P.5</i> |
| <i>GENERAL SUMMARY</i> | <i>P.6</i> |
| <i>PAVEMENT MARKINGS</i> | <i>P.7</i> |
| <i>STRUCTURES</i> | <i>P.8 - P.20</i> |

PLAN PREPARED BY:
ODOT DISTRICT 4 - CAPITAL PROGRAMS
2088 S. ARLINGTON RD
AKRON, OHIO 44319

[illegible]

I HEREBY APPROVE THESE PLANS AND DECLARE THAT THE MAKING OF THIS IMPROVEMENT WILL NOT REQUIRE THE CLOSING TO TRAFFIC OF THE HIGHWAY AND THAT PROVISIONS FOR THE MAINTENANCE AND SAFETY OF TRAFFIC WILL BE AS SET FORTH ON THE PLANS AND ESTIMATES.


Pamela Boratyn
Director, Department of Transportation

TITLE SHEET

DESIGN AGENCY



| | |
|--------------|-------|
| DESIGNER | |
| JF | |
| REVIEWER | |
| MJA 08-08-25 | |
| PROJECT ID | |
| 121474 | |
| SHEET | TOTAL |
| P.1 | 20 |

NOTIFICATION OF TRAFFIC RESTRICTIONS

THROUGHOUT THE DURATION OF THE PROJECT, THE CONTRACTOR SHALL NOTIFY THE PROJECT ENGINEER IN WRITING OF ALL TRAFFIC RESTRICTIONS AND UPCOMING MAINTENANCE OF TRAFFIC CHANGES. THE CONTRACTOR SHALL ENSURE THE WRITTEN NOTIFICATION IS SUBMITTED IN A TIMELY MANNER TO ALLOW THE PROJECT ENGINEER TO MEET THE REQUIRED TIME FRAMES SET FORTH IN THE TABLE BELOW TO INFORM THE SPECIAL HAULING PERMITS SECTION (HAULING.PERMITS@DOT.OHIO.GOV) AND THE DISTRICT PUBLIC INFORMATION OFFICE (PIO). THIS NOTIFICATION SHALL BE RECEIVED BY THE PROJECT ENGINEER PRIOR TO THE PHYSICAL SETUP OF ANY APPLICABLE SIGNS OR MESSAGE BOARDS.

INFORMATION SHOULD INCLUDE, BUT IS NOT LIMITED TO, ALL CONSTRUCTION ACTIVITIES THAT IMPACT OR INTERFERE WITH TRAFFIC AND SHALL LIST THE SPECIFIC LOCATION, TYPE OF WORK, ROAD STATUS, DATE AND TIME OF RESTRICTION, DURATION OF RESTRICTION, NUMBER OF LANES MAINTAINED, NUMBER OF LANES CLOSED, MINIMUM VERTICAL CLEARANCE, MINIMUM WIDTH OF DRIVABLE PAVEMENT, DETOUR ROUTES, IF APPLICABLE, AND ANY OTHER INFORMATION REQUESTED BY THE PROJECT ENGINEER.

| NOTIFICATION TIME TABLE | | |
|--|------------------------|--|
| ITEM | DURATION OF CLOSURE | NOTICE DUE TO PERMITS & PIO |
| ROAD & RAMP CLOSURES | >= 2 WEEKS | 21 CALENDAR DAYS PRIOR TO CLOSURE |
| | > 12 HOURS & < 2 WEEKS | 14 CALENDAR DAYS PRIOR TO CLOSURE |
| | <12 HOURS | 4 BUSINESS DAYS PRIOR TO CLOSURE |
| LANE CLOSURES & RESTRICTIONS | >=2 WEEKS | 14 CALENDAR DAYS PRIOR TO CLOSURE |
| | < 2 WEEKS | 5 BUSINESS DAYS PRIOR TO CLOSURE |
| START OF CONSTRUCTION & TRAFFIC PATTERNS CHANGES | N/A | 14 CALENDAR DAYS PRIOR TO IMPLEMENTATION |

ANY UNFORESEEN CONDITIONS NOT SPECIFIED IN THE PLANS REQUIRING TRAFFIC RESTRICTIONS SHALL ALSO BE REPORTED TO THE PROJECT ENGINEER USING THE NOTIFICATION TIME TABLE.

STRUCTURE EXPANSION JOINT REPLACEMENTS AT MAH-680-7.126 (SOUTH AVE)

THE EXPANSION JOINT REPLACEMENT WORK AT THE ABUTMENTS ON MAH-680-7.126 SHALL BE PERFORMED ONE DIRECTIONAL BOUND AT A TIME USING WEEKEND CLOSURES BETWEEN 6 PM FRIDAY AND 6 AM MONDAY. TWO WEEKEND CLOSURES PER DIRECTION ARE ANTICIPATED FOR THIS WORK (FOUR TOTAL WEEKENDS).

THE CENTERLINE EXPANSION JOINT REPLACEMENT WORK ON MAH-680-7.126 SHALL BE PERFORMED BY CLOSING BOTH SOUTH AVENUE INSIDE LANES AND THE LEFT TURNING LANE SIMULTANEOUSLY FOR A DURATION NOT TO EXCEED 7 CALENDAR DAYS. THE EXPANSION JOINT REPLACEMENTS AT THE CENTERLINE AND AT THE ABUTMENTS SHALL NOT BE PERFORMED AT THE SAME TIME. TO PROTECT TRAFFIC BELOW SOUTH AVENUE, THE CONTRACTOR SHALL CLOSE LANES AND/OR SHIFT I-680 TRAFFIC AS NECESSARY AND IN COMPLIANCE WITH THE PERMITTED LANE CLOSURE SCHEDULE. THE MAINTENANCE OF TRAFFIC FOR THE REPLACEMENT OF THE SOUTH AVENUE CENTERLINE EXPANSION JOINT SHALL BE COORDINATED WITH THE PART 1 WORK AND SHALL NOT BE CONCURRENT WITH PART 1, PHASES 2A-2C.

THE MAINTENANCE OF TRAFFIC FOR THE EXPANSION JOINT WORK SHALL BE COORDINATED WITH PART 1.

THE FOLLOWING QUANTITIES ARE PROVIDED FOR THE SUGGESTED CENTERLINE EXPANSION JOINT REPLACEMENT MOT:

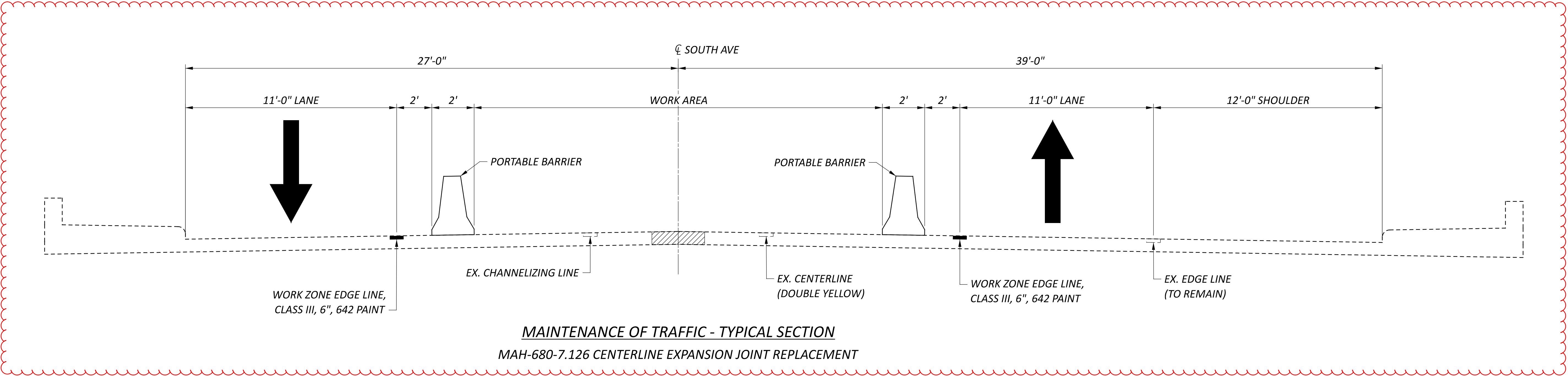
614, WORK ZONE IMPACT ATTENUATOR, 24" WIDE HAZARDS, (BIDIRECTIONAL), 2 EACH

614, OBJECT MARKER, ONE-WAY, 14 EACH

614, BARRIER REFLECTOR, TYPE 1, ONE-WAY, 14 EACH

614, WORK ZONE EDGE LINE, CLASS III, 6", 642 PAINT, 0.24 MILE

622, PORTABLE BARRIER, UNANCHORED, 680 FT



| SHEET NUMBER | | | | | | | | PART. | | | ITEM | ITEM EXT | GRAND TOTAL | UNIT | DESCRIPTION | SEE SHEET NO. |
|--------------|------|-----|------|------|-----|-----|------|--------|-------------|--------|---------|-------------|----------------|------|--|---------------------|
| P.2 | P.3 | P.4 | P.5 | P.7 | P.8 | P.9 | P.10 | 01/IMS | 02/IMS | 03/IMS | | | | | | |
| LS | | | | | | | | | | LS | SPECIAL | 69091000 | LS | | ROADWAY | |
| | | | | | | | | | | | | | | | AS-BUILT CONSTRUCTION PLANS | P.2 |
| | | | | | | | | | | 3,000 | 832 | 30000 | 3,000 | EACH | EROSION CONTROL | |
| | | | | | | | | | | | | | | | TRAFFIC CONTROL | |
| | | | | | 354 | 303 | 250 | | | 907 | 630 | 02100 | 907 | FT | GROUND MOUNTED SUPPORT, NO. 2 POST | |
| | | | | | 72 | 54 | 60 | | | 186 | 630 | 80100 | 186 | SF | SIGN, FLAT SHEET | |
| | | | | | 30 | 31 | 18 | | | 79 | 630 | 80100 | 79 | SF | SIGN, FLAT SHEET, 730.20 | |
| | | | | | 24 | 20 | 16 | | | 60 | 630 | 84900 | 60 | EACH | REMOVAL OF GROUND MOUNTED SIGN AND DISPOSAL | |
| | | | | | 18 | 16 | 14 | | | 48 | 630 | 86002 | 48 | EACH | REMOVAL OF GROUND MOUNTED POST SUPPORT AND DISPOSAL | |
| | | | | 0.18 | | | | | | 0.18 | 646 | 10010 | 0.18 | MILE | EDGE LINE, 6" | |
| | | | | 0.22 | | | | | | 0.22 | 646 | 10110 | 0.22 | MILE | LANE LINE, 6" | |
| | | | | 0.27 | | | | | | 0.27 | 646 | 10200 | 0.27 | MILE | CENTER LINE | |
| | | | | 289 | | | | | | 289 | 646 | 10300 | 289 | FT | CHANNELIZING LINE, 8" | |
| | | | | | | | | | | | | | | | STRUCTURE REPAIRS | |
| | | | | | | | | | | | | | | | FOR MAH-62-17.499 ESTIMATED QUANTITIES | P.15 |
| | | | | | | | | | | | | | | | FOR MAH-680-4.734 ESTIMATED QUANTITIES | P.15 |
| | | | | | | | | | | | | | | | FOR MAH-680-4.955 ESTIMATED QUANTITIES | P.15 |
| | | | | | | | | | | | | | | | FOR MAH-680-5.132 ESTIMATED QUANTITIES | P.15 |
| | | | | | | | | | | | | | | | FOR MAH-680-5.601 ESTIMATED QUANTITIES | P.15 |
| | | | | | | | | | | | | | | | FOR MAH-680-5.815 ESTIMATED QUANTITIES | P.15 |
| | | | | | | | | | | | | | | | FOR MAH-680-6.037 ESTIMATED QUANTITIES | P.15 |
| | | | | | | | | | | | | | | | FOR MAH-680-6.116 ESTIMATED QUANTITIES | P.15 |
| | | | | | | | | | | | | | | | FOR MAH-680-6.347SE ESTIMATED QUANTITIES | P.15 |
| | | | | | | | | | | | | | | | FOR MAH-680-6.377 ESTIMATED QUANTITIES | P.15 |
| | | | | | | | | | | | | | | | FOR MAH-680-6.421 ESTIMATED QUANTITIES | P.15 |
| | | | | | | | | | | | | | | | FOR MAH-680-6.933 ESTIMATED QUANTITIES | P.15 |
| | | | | | | | | | | | | | | | FOR MAH-680-6.983 ESTIMATED QUANTITIES | P.15 |
| | | | | | | | | | | | | | | | FOR MAH-680-7.126 ESTIMATED QUANTITIES | P.15 |
| | | | | | | | | | | | | | | | FOR MAH-680-7.297 ESTIMATED QUANTITIES | P.15 |
| | | | | | | | | | | | | | | | MAINTENANCE OF TRAFFIC | |
| | | 20 | | | | | | | | 20 | 614 | 11110 | 20 | HOUR | LAW ENFORCEMENT OFFICER WITH PATROL CAR FOR ASSISTANCE | |
| | 6 | | | | | | | | | 6 | 614 | 12460 | 6 | EACH | WORK ZONE MARKING SIGN | |
| | | | 2 | | | | | | Added items | 2 | 614 | 12384 | 2 | EACH | WORK ZONE IMPACT ATTENUATOR, 24" WIDE HAZARDS, (BIDIRECTIONAL) | |
| | | | 14 | | | | | | | 14 | 614 | 13310 | 14 | EACH | BARRIER REFLECTOR, TYPE 1 (ONE-WAY) | |
| | | | 14 | | | | | | | 14 | 614 | 13350 | 14 | EACH | OBJECT MARKER, ONE WAY | |
| | | 4 | | | | | | | | 4 | 614 | 18601 | 4 | SNMT | PORTABLE CHANGEABLE MESSAGE SIGN, AS PER PLAN | P.4 |
| | 0.64 | | | | | | | | | 0.64 | 614 | 20560 | 0.64 | MILE | WORK ZONE LANE LINE, CLASS III, 6", 642 PAINT | |
| | 0.14 | | | | | | | | | 0.14 | 614 | 21550 | 0.14 | MILE | WORK ZONE CENTER LINE, CLASS III, 642 PAINT | |
| | 1.06 | | 0.24 | | | | | | Revised QTY | 1.3 | 614 | 22360 | 1.3 | MILE | WORK ZONE EDGE LINE, CLASS III, 6", 642 PAINT | |
| | 386 | | | | | | | | | 386 | 614 | 23680 | 386 | FT | WORK ZONE CHANNELIZING LINE, CLASS III, 8", 642 PAINT | |
| | 300 | | | | | | | | | 300 | 614 | 23690 | 300 | FT | WORK ZONE CHANNELIZING LINE, CLASS III, 12", 642 PAINT | |
| | | | 680 | | | | | | Added items | 680 | 622 | 41100 | 680 | FT | PORTABLE BARRIER, UNANCHORED | |
| | | | | | | | | | | | | | | | INCIDENTALS | |
| | | | | | | | | | | | 614 | 11000 | LS | | MAINTAINING TRAFFIC | |
| | | | | | | | | | Revised QTY | 28 | 619 | 16021 | 28 | MNTH | FIELD OFFICE, TYPE C, AS PER PLAN | P.2 |
| | | | | | | | | | | LS | 623 | 10000 | LS | | CONSTRUCTION LAYOUT STAKES AND SURVEYING | |
| | | | | | | | | | | LS | 624 | 10000 | LS | | MOBILIZATION | |

GENERAL SUMMARY

DESIGN AGENCY



DESIGNER

JF

REVIEWER

MJA 08-08-25

PROJECT ID

121474

SHEET

P.6

TOTAL

20