
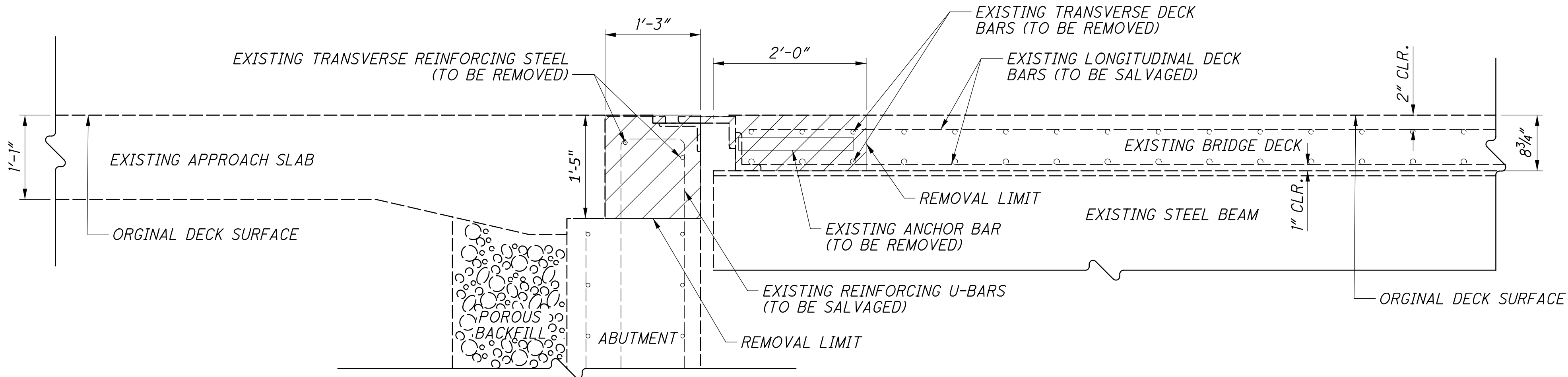


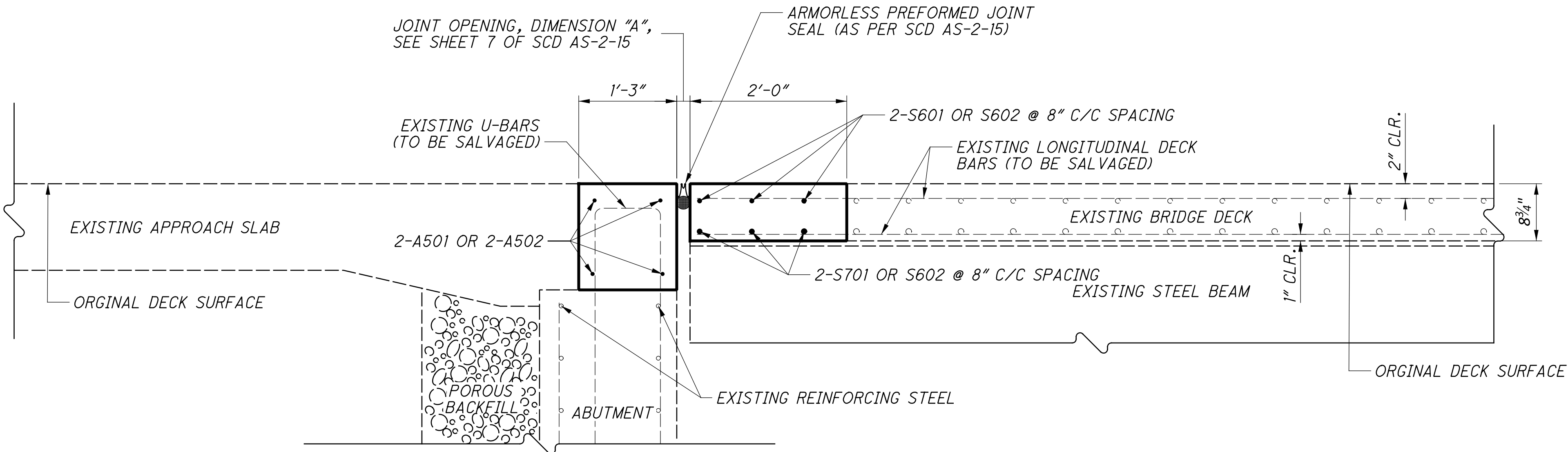
NOTES:

1.  ITEM 202 - PORTIONS OF STRUCTURE TO BE REMOVED
2. REMOVAL OF EXISTING JOINTS, DECK CONCRETE AND BACK-WALL CONCRETE WILL BE PAID FOR UNDER ITEM 202 PORTIONS OF STRUCTURE REMOVED, AS PER PLAN. REMOVAL LIMITS WILL BE FROM TOE TO TOE OF SIDEWALK OF BRIDGE DECK AND BACKWALL FOR THE LENGTH SHOWN IN THE DETAIL BELOW AT EACH ABUTMENT. CARE WILL BE TAKEN TO SALVAGE ALL EXISTING LONGITUDINAL DECK AND BACKWALL U-SHAPED REINFORCING STEEL DURING CONCRETE REMOVAL.
3. REBUILD PORTION OF DECK AND ABUTMENT BACKWALL PER THE DETAIL SHOWN BELOW. ALL MATERIAL, LABOR, EQUIPMENT, AND INCIDENTALS REQUIRED TO PERFORM THIS WORK WILL BE INCLUDED IN THE UNIT BID PRICE FOR ITEM SPECIAL -- PATCHING CONCRETE STRUCTURE, MISC.: VES-LMC (VERY EARLY STRENGTH - LATEX MODIFIED CONCRETE).
4. ALL REINFORCING STEEL REQUIRED TO COMPLETE THE CONSTRUCTION OF THE NEW JOINT WILL BE PAID FOR UNDER ITEM 509 -- EPOXY COATED REINFORCING STEEL.
5. FOR ADDITIONAL NOTES SEE SHEET 8/14 OF SCD AS-2-15.



**MAH-680-7.126
REMOVAL DETAILS**

APPROACH SHOWN
TRAILING SIMILAR



**MAH-680-7.126
PROPOSED WORK DETAIL**

APPROACH SHOWN
TRAILING SIMILAR

