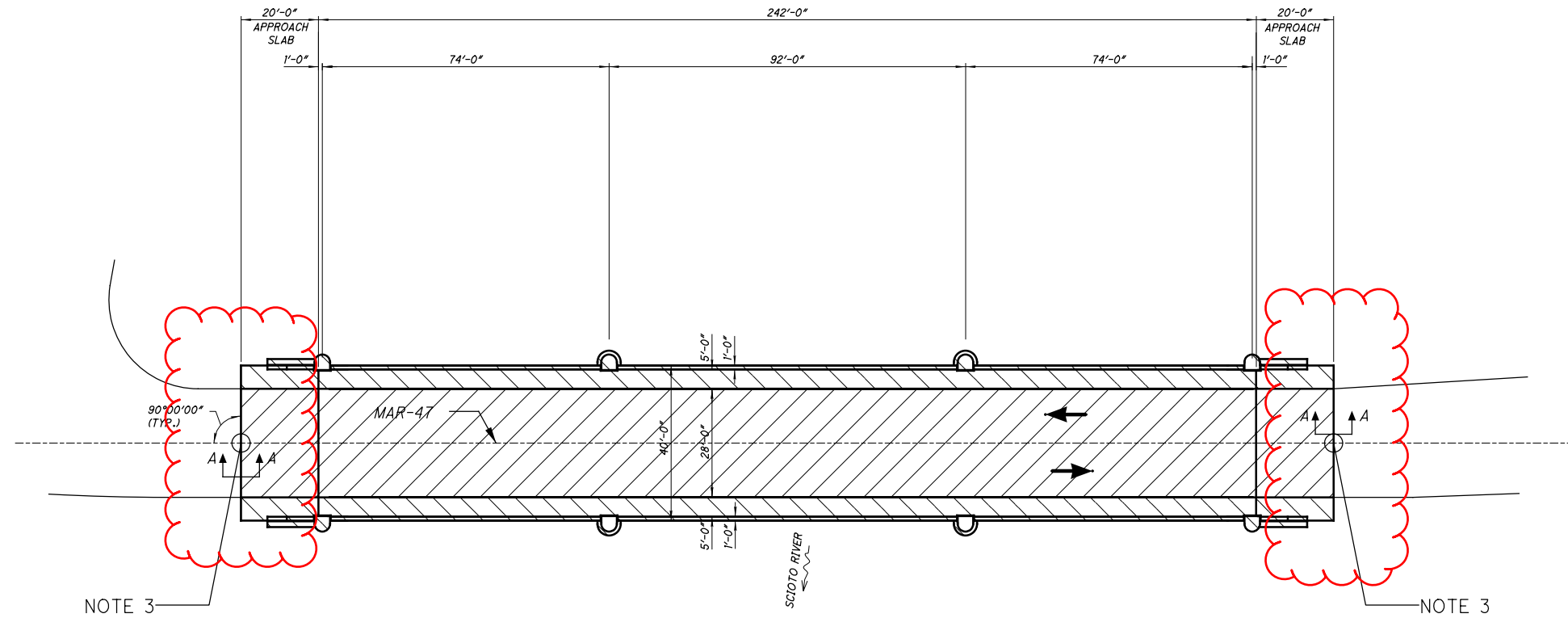


PARTICIPATION		ITEM	ITEM EXT	GRAND TOTAL	UNIT	DESCRIPTION	SEE SHEET NO.
01/STR/PV	02/STR/BR						
						MAR-47-2.21 SFN:5102278	
	880	512	10050	880	SQ YD	SEALING OF CONCRETE SURFACES (NON-EPOXY)	
	525	512	10000	525	SQ YD	SEALING OF CONCRETE SURFACES (EPOXY-URETHANE)	
	14	846	00110	14	CF	POLYMER MODIFIED ASPHALT EXPANSION JOINT SYSTEM	



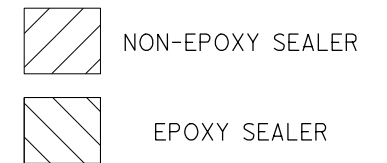
NOTES:

NOTE 1:
DO NOT PAVE DECK. SEAL DECK AND APPROACH SLABS WITH NON-EPOXY SEALER.

NOTE 2:
SEAL SIDEWALKS AND INSIDE PARAPETS WITH EPOXY SEALER. SEE SHEET X/X FOR PARAPET DETAIL.

NOTE 3:
INSTALL POLYMER MODIFIED ASPHALT EXPANSION JOINTS.

BRIDGE PLAN
MAR-47-2.21 (5102278)
OVER SCIOTO RIVER



I:\ProjectData\107818\MAR-47-2.09\Design\Roadway\Sheets\107818_SPO01.dgn SPI01 1/30/2020 2:54:18 PM rmcneill

LOCATION				QUANTITIES				REMARKS	STRUCTURE NOTES
C O U N T Y	R O U T E	S L M	D E C K A R E A	512	512	846			
			SQ FT	SEALING OF CONCRETE SURFACES (NON-EPOXY)	SEALING OF CONCRETE SURFACES (EPOXY-URETHANE)	POLYMER MODIFIED ASPHALT EXPANSION JOINT SYSTEM		MAR-47-2.21 SFN: 5102278	
				SQ YD	SQ YD	CF			
MAR	47	2.21	11,475.0	880			BRIDGE DECK, APPROACH SLABS	SKEW: 0° SECTION A-A EACH JOINT TO BE 24'-0" LONG ITEM 846 - POLYMER MODIFIED EXPANSION JOINT	
					400		SIDEWALKS		
					125		INSIDE PARAPETS		
						14	EXPANSION JOINT AT APPROACHES		
TOTALS CARRIED TO STRUCTURE QUANTITIES				880	525	14			

DESIGN AGENCY: THE OHIO DEPARTMENT OF TRANSPORTATION DISTRICT 6

DATE: MM/DD/YY

REVIEWED: XXX

STRUCTURE FILE NUMBER: 5102278

DRAWN: XXX

CHECKED: XXX

DESIGNED: RAM

MARION STA. 0+00 STA. 0+00

SITE PLAN
MAR SR 47
SLM 2.21 OVER SCIOTO RIVER

MAR SR 47 2.09
PID No. 107818

2 / 3

37
38