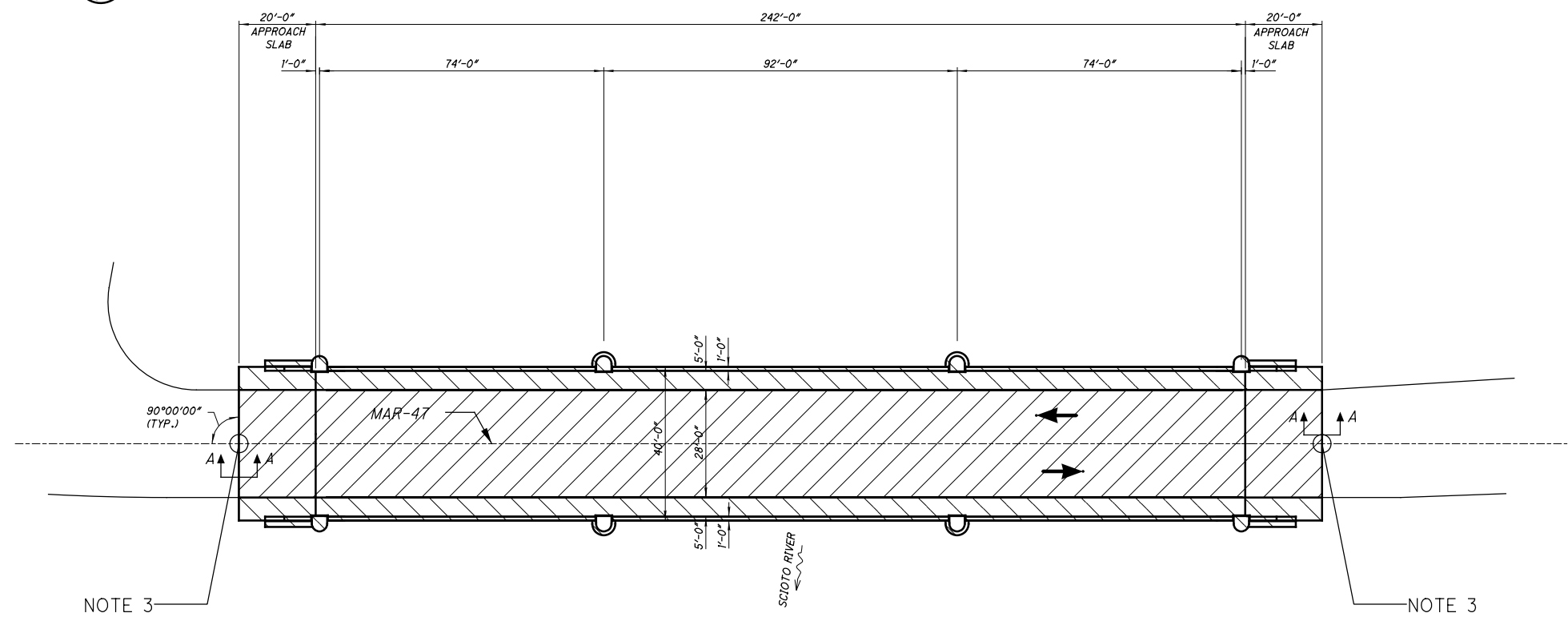


PARTICIPATION		ITEM	ITEM EXT	GRAND TOTAL	UNIT	DESCRIPTION	SEE SHEET NO.
01/STR/PV	02/STR/BR						
						<b>MAR-47-2.21 SFN:5102278</b>	
	880	512	10050	880	SQ YD	SEALING OF CONCRETE SURFACES (NON-EPOXY)	
	525	512	10100	525	SQ YD	SEALING OF CONCRETE SURFACES (EPOXY-URETHANE)	
	14	846	00110	14	CF	POLYMER MODIFIED ASPHALT EXPANSION JOINT SYSTEM	



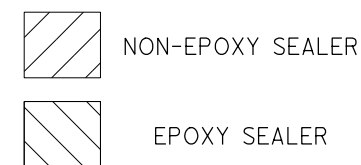
**NOTES:**

**NOTE 1:**  
DO NOT PAVE DECK. SEAL DECK AND  
APPROACH SLABS WITH NON-EPOXY SEALER.

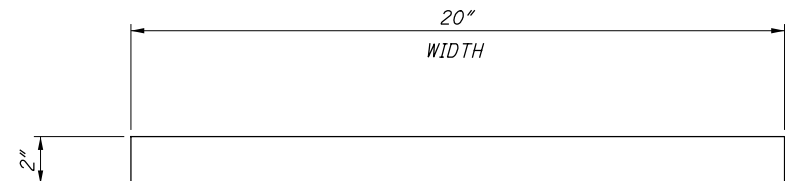
**NOTE 2:**  
SEAL SIDEWALKS AND INSIDE PARAPETS  
WITH EPOXY SEALER. SEE SHEET X/X  
FOR PARAPET DETAIL.

**NOTE 3:**  
INSTALL POLYMER MODIFIED ASPHALT  
EXPANSION JOINTS.

**BRIDGE PLAN**  
MAR-47-2.21 (5102278)  
OVER SCIOTO RIVER



I:\ProjectData\107818\_MAR-47-2.09\_Design\Roadway\Sheets\107818\_SP001.dgn\_S101 1/30/2020 2:54:18 PM rmcneill

LOCATION				QUANTITIES				REMARKS	STRUCTURE NOTES
C	R	S	D	512	512	846			
U	O	L	E					MAR-47-2.21 SFN: 5102278 SKIEW: 0°  SECTION A-A EACH JOINT TO BE 24'-0" LONG ITEM 846 - POLYMER MODIFIED EXPANSION JOINT	
N	E	M	C	SEALING OF CONCRETE SURFACES (NON-EPOXY)	SEALING OF CONCRETE SURFACES (EPOXY-URETHANE)	POLYMER MODIFIED ASPHALT EXPANSION JOINT SYSTEM			
T			A	SQ YD	SQ YD	CF			
Y			E R E A						
			A						
			SQ FT						
MAR	47	2.21	11,475.0	880				BRIDGE DECK, APPROACH SLABS	
								SIDEWALKS	
								INSIDE PARAPETS	
								EXPANSION JOINT AT APPROACHES	
TOTALS CARRIED TO STRUCTURE QUANTITIES				880	525	14			

DESIGN AGENCY THE OHIO DEPARTMENT OF TRANSPORTATION DISTRICT 6	DATE MM/DD/YY XXX	REVIEWED XXX	DESIGNED RAM	DRAWN XXX	REVISIONS XXX	MARION STA. 0+00 STA. 0+00	<b>SITE PLAN</b> MAR SR 47 SLM 2.21 OVER SCIOTO RIVER	MAR SR 47 2.09 PID No. 107818	2 / 3	
--	-------------------------	-----------------	-----------------	--------------	------------------	----------------------------------	---	----------------------------------	-------	---