



MAR-98-6.22

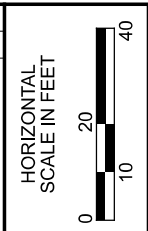
MODEL: Sheet PAPER SIZE: 17x11 (in.) DATE: 5/9/2022 TIME: 10:34:36 AM USER: 16366cb X:\4037000\190724\11\109550_MAR-98-6.22\400-Engineering\Roadway\Sheets\109550_GG001.dgn

SHEET NUM.										PART.		ITEM	ITEM EXT	GRAND TOTAL	UNIT	DESCRIPTION	SEE SHEET NO.	
8	45	46	47	48	49	92	124	PAVT CALCS	01/SAF/PV	02/STR/CV								
	LS								LS		201	11000	LS		CLEARING AND GRUBBING		6	
						240		5,942	6,182		202	23000	6,182	SY	PAVEMENT REMOVED			
		730							246	484	202	35100	730	FT	PIPE REMOVED, 24" AND UNDER			
		1							1		202	58100	1	EACH	CATCH BASIN REMOVED			
	38									38	202	75000	38	FT	FENCE REMOVED			
	2								2		202	98100	2	EACH	REMOVAL MISC.: MASONRY PILLAR		6	
	2								1	1	202	98100	2	EACH	REMOVAL MISC.:BOULDER			
	1									1	202	98100	1	EACH	REMOVAL MISC.:CONCRETE DEER			
			1						1		202	98100	1	EACH	REMOVAL MISC.:INSPECTION WELL		7	
	3								3		202	98100	3	EACH	REMOVAL MISC.:POST			
				20					20		202	98200	20	FT	REMOVAL MISC.:CONDUIT		7	
	5,050								5,050		203	10000	5,050	CY	EXCAVATION			
	3,672								3,672		203	20000	3,672	CY	EMBANKMENT			
			50						50		203	20001	50	CY	EMBANKMENT, AS PER PLAN		7	
						296			296		204	10000	296	SY	SUBGRADE COMPACTION			
	1,484								1,484		204	13000	1,484	CY	EXCAVATION OF SUBGRADE			
	1,484								1,484		204	20000	1,484	CY	EMBANKMENT			
								4	4		204	45000	4	HOUR	PROOF ROLLING			
								9,789	9,789		206	10020	9,789	SY	LIME STABILIZED SUBGRADE, 14 INCHES DEEP			
								296	296		206	10300	296	TON	LIME			
								9,789	9,789		206	11000	9,789	SY	CURING COAT			
	919								919		608	52000	919	SF	CURB RAMP			
	4								4		623	38500	4	EACH	MONUMENT ASSEMBLY			
	1								1		623	39500	1	EACH	MONUMENT BOX ADJUSTED TO GRADE			
									LS		878	25000	LS		INSPECTION AND COMPACTION TESTING OF UNBOUND MATERIALS			
		7							7		601	11000	7	SY	RIPRAP, TYPE D			
		179			7.12				7.12		601	21050	7.12	SY	TIED CONCRETE BLOCK MAT WITH TYPE 1 UNDERLAYMENT			
									179		601	21060	179	SY	TIED CONCRETE BLOCK MAT WITH TYPE 2 UNDERLAYMENT			
			8						3	5	601	32204	8	CY	ROCK CHANNEL PROTECTION, TYPE C WITH GEOTEXTILE FABRIC			
	1,304								1,304		659	00300	1,304	CY	TOPSOIL			
	8,721								8,721		659	10000	8,721	SY	SEEDING AND MULCHING			
	588								588		659	14000	588	SY	REPAIR SEEDING AND MULCHING			
	588								588		659	15000	588	SY	INTER-SEEDING			
	1.64								1.64		659	20000	1.64	TON	COMMERCIAL FERTILIZER			
	2.43								2.43		659	31000	2.43	ACRE	LIME			
									65		659	35000	65	MGAL	WATER			
		1,341	1,680						2,180	841	670	00700	3,021	SY	DITCH EROSION PROTECTION			
					LS				LS		832	15000	LS		STORM WATER POLLUTION PREVENTION PLAN			
					LS				LS		832	15002	LS		STORM WATER POLLUTION PREVENTION INSPECTIONS			
					LS				LS		832	15010	LS		STORM WATER POLLUTION PREVENTION INSPECTION SOFTWARE			
						69,000			69,000		832	30000	69,000	EACH	EROSION CONTROL			

GENERAL SUMMARY

DESIGN AGENCY

 CLIENT

 DESIGNER
 ANM
 REVIEWER
 DCB 09/14/21
 PROJECT ID
 109550
 SHEET TOTAL
 P.42 161

REF NO.	SHEET NO.	STATION	SIDE	OFFSET	INVERT	STATION	SIDE	OFFSET	INVERT	601	605	605	611	611	BENDS AND BRANCHES - FOR INFORMATION ONLY							
										TIED CONCRETE BLOCK MAT WITH TYPE 1 UNDERLAYMENT	6" UNCLASSIFIED PIPE UNDERDRAINS	6" BASE PIPE UNDERDRAINS	6" CONDUIT, TYPE F FOR UNDERDRAIN OUTLETS	PRECAST REINFORCED CONCRETE OUTLET	NOT CARRIED TO THE GENERAL SUMMARY							
FROM	TO	SY	FT	FT	FT	EACH	NO.	NO.	NO.	NO.	NO.	NO.	NO.	NO.	NO.	NO.						
UD-1	56,58	73+25	LT	12.05	976.61	75+83	LT	17.43	975.89								1					
UD-2	56	73+25	RT	11.48	976.32	75+83	RT	17	975.92		258						1					
UD-3	52,56-57	75+83	LT	17.43	975.89	78+45	LT	21.25	974.15			257										
UD-4	52,56	75+83	RT	17	975.92	78+44	RT	23.11	974.20			255										
UD-5	52,57-58	78+45	LT	21.25	974.15	79+46	LT	44.8	973.93		109											
UD-6	52,58	78+44	RT	23.11	974.20	79+41	RT	49.15	973.70		100										1	
UD-7	51-52	79+41	RT	49.15	973.70	18+42	LT	23.6	974.15			108					1	1				
UD-8	51	16+42	LT	13.79	974.92	18+42	LT	23.6	974.15			195					1					
UD-9	51	16+42	RT	13.28	974.92	18+37	RT	23.7	974.09			205										
UD-10	51-53,57	18+37	LT	23.7	974.09	80+70	RT	32.19	972.94		144							1				
UD-11	52,57-58,61	80+70	RT	32.19	972.94	81+89	RT	19.97	973.32		128											
UD-12	52,59	81+89	RT	19.97	973.32	84+15	RT	21.12	974.50			221										
UD-13	59,61	82+86	LT	20.52	973.73	84+13	LT	13.11	973.47		130										1	
UD-14	52,59	81+89	LT	24.16	973.25	82+86	LT	20.52	973.73			100										
UD-15	52,59,61	81+15	LT	22.56	973.10	81+89	LT	24.16	973.25		72											
UD-16	52,57	80+68	LT	42.52	974.76	81+15	LT	22.56	973.10			46									1	1
UD-17	52,57	80+68	LT	42.52	974.76	22+81	RT	20.95	972.07			238										
UD-18	52,57	81+89	LT	24.16	973.25	22+81	RT	21.16	710.43													
UD-19	52,54	22+93	LT	19.39	971.76	27+75	LT	13.48	965.68			299					1				1	
UD-20	52,54	22+81	LT	20.95	972.07	27+75	LT	13.88	975.67			496					1	1				
UD-21	52,57	0+41	RT	18.92	975.46	2+42	RT	18.92	976.26								1					
UD-22	52,57	0+41	RT	18.92	975.46	2+42	RT	18.92	976.26								1	1				
UD-23	52	22+93	LT	19.39	971.76	22+94	LT	28.88	974.43	1.78			10	1								
UD-24	52	22+68	LT	18.53	971.78	22+71	LT	31.59	971.42	1.78			13	1								
UD-25	52	22+81	RT	20.95	972.07	22+81	RT	33.23	971.06				14								1	
UD-26	52,57	79+46	LT	44.8	973.93	79+25	LT	70.59	971.05				35									
UD-27	52,57	80+27	LT	34.92	975.46	80+68	LT	45.52	974.76				34									
UD-28	52	81+03	LT	0.2	971.40	81+15	LT	22	973.10				26									
UD-29	52,57	80+70	RT	32.09	972.94	80+77	RT	60.34	972.02				34									
UD-30	52	19+47	LT	46.79	973.70	19+33	LT	71.68	973.57	1.78			31	1								
UD-31	51	18+42	LT	23.6	974.15	18+42	LT	38.65	973.72	1.78			17	1								
UD-32	59	84+13	LT	13.11	973.47	84+14	LT	18.26	972.58				5									
GEN NOTE	6												100									
TOTALS CARRIED TO GENERAL SUMMARY										7.12	941	2681	319	4	8	4	0	0	5	1		



DRAINAGE QUANTITIES UNDERDRAINS

DESIGN AGENCY
Mead & Hunt

CLIENT

DESIGNER
CRS

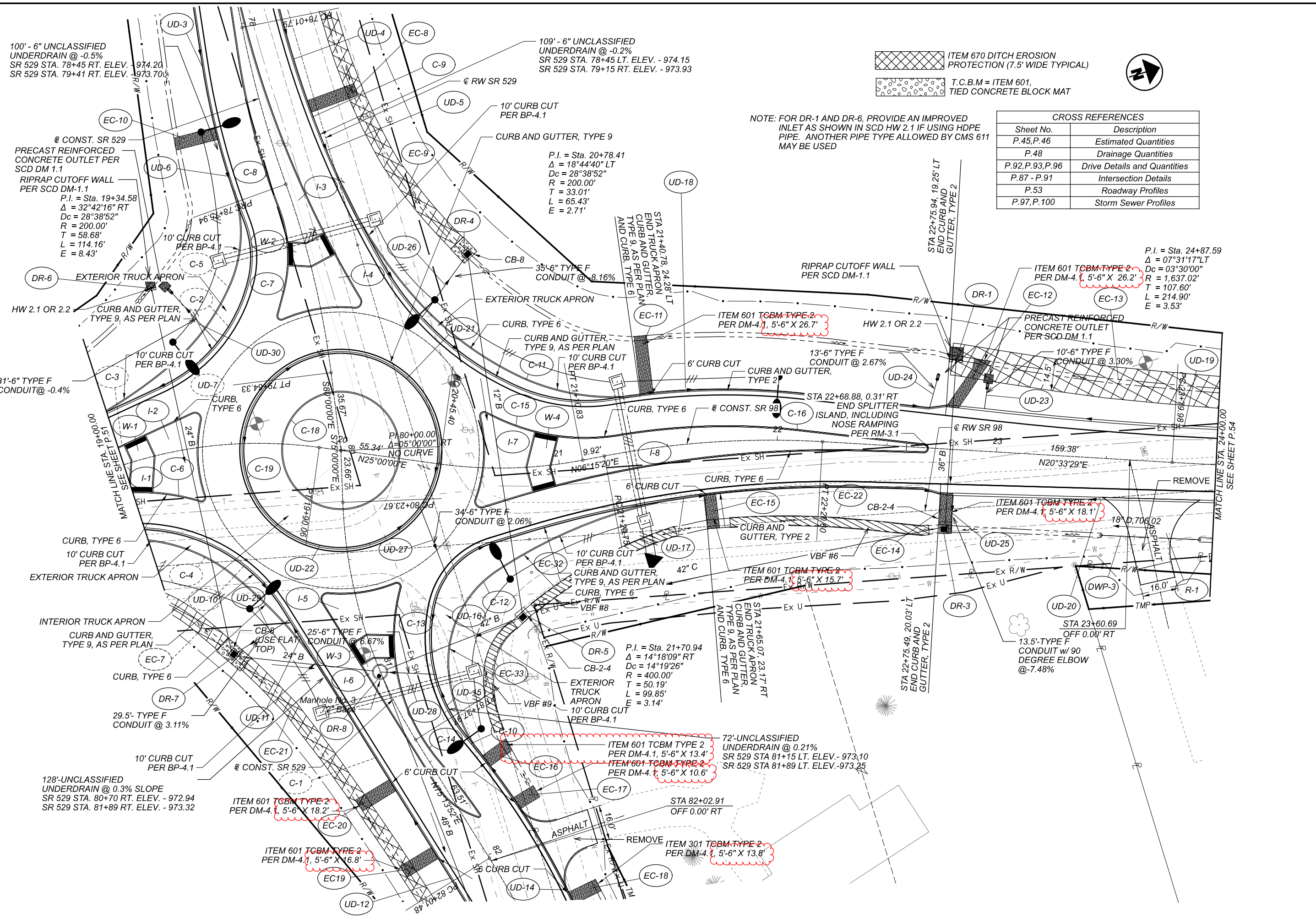
REVIEWER
SJS 03/04/21

PROJECT ID
109550

SHEET TOTAL
P.48 161

MAR-98-6.22

MODEL: 109550.GP3 PAPER SIZE: ITXII (in.) DATE: 5/9/2022 TIME: 10:13:18 AM USER: 1636dcb
X:\4037000\190724\01\109550\MAR-98-6.22\400-Engineering\Roadway\Sheets\109550_GP003.dgn



100' - 6" UNCLASSIFIED UNDERDRAIN @ -0.5%
SR 529 STA. 78+45 RT. ELEV. - 974.20
SR 529 STA. 79+41 RT. ELEV. - 973.70

109' - 6" UNCLASSIFIED UNDERDRAIN @ -0.2%
SR 529 STA. 78+45 LT. ELEV. - 974.15
SR 529 STA. 79+15 RT. ELEV. - 973.93

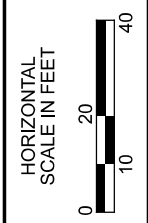
ITEM 670 DITCH EROSION PROTECTION (7.5' WIDE TYPICAL)
 T.C.B.M = ITEM 601, TIED CONCRETE BLOCK MAT



NOTE: FOR DR-1 AND DR-6, PROVIDE AN IMPROVED INLET AS SHOWN IN SCD HW 2.1 IF USING HDPE PIPE. ANOTHER PIPE TYPE ALLOWED BY CMS 611 MAY BE USED

CROSS REFERENCES	
Sheet No.	Description
P.45, P.46	Estimated Quantities
P.48	Drainage Quantities
P.92, P.93, P.96	Drive Details and Quantities
P.87 - P.91	Intersection Details
P.53	Roadway Profiles
P.97, P.100	Storm Sewer Profiles

P.I. = Sta. 24+87.59
Δ = 07°31'17"LT
Dc = 03°30'00"
R = 1,637.02'
T = 107.60'
L = 214.90'
E = 3.53'



PLAN - SR 98
STA. 19+00 TO STA. 24+00

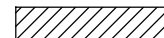
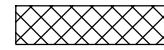
DESIGN AGENCY
Mead & Hunt
CLIENT

DESIGNER
ANM

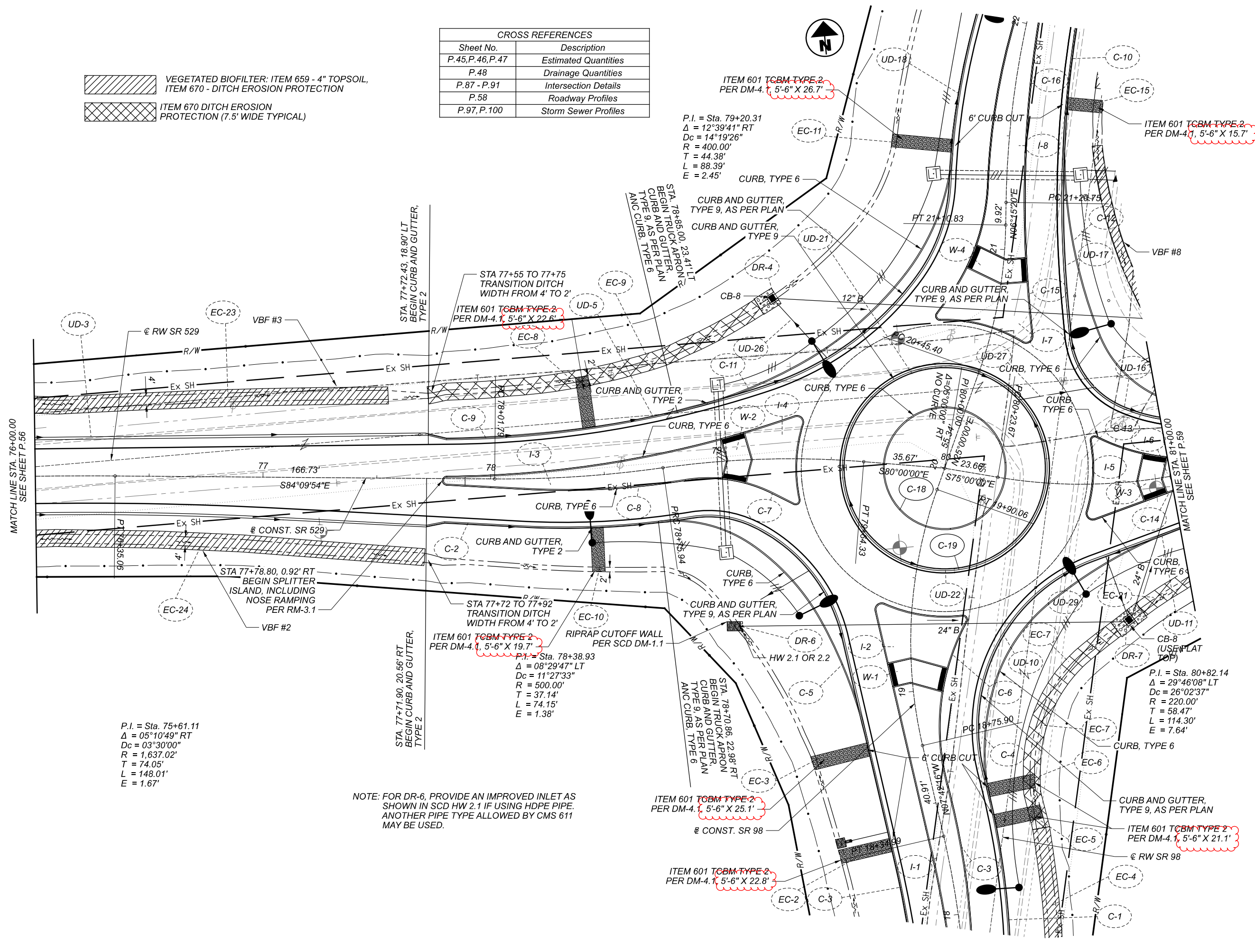
REVIEWER
DCB 10/09/20

PROJECT ID
109550

SHEET TOTAL
P.52 161

 VEGETATED BIOFILTER: ITEM 659 - 4" TOPSOIL, ITEM 670 - DITCH EROSION PROTECTION
 ITEM 670 DITCH EROSION PROTECTION (7.5' WIDE TYPICAL)

CROSS REFERENCES	
Sheet No.	Description
P.45,P.46,P.47	Estimated Quantities
P.48	Drainage Quantities
P.87 - P.91	Intersection Details
P.58	Roadway Profiles
P.97,P.100	Storm Sewer Profiles



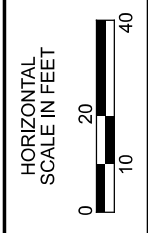
P.I. = Sta. 75+61.11
 $\Delta = 05^{\circ}10'49''$ RT
 $D_c = 03^{\circ}30'00''$
 $R = 1,637.02'$
 $T = 74.05'$
 $L = 148.01'$
 $E = 1.67'$

NOTE: FOR DR-6, PROVIDE AN IMPROVED INLET AS SHOWN IN SCD HW 2.1 IF USING HDPE PIPE. ANOTHER PIPE TYPE ALLOWED BY CMS 611 MAY BE USED.

ITEM 601 TCBM TYPE 2 PER DM-4.1, 5'-6" X 25.1'

ITEM 601 TCBM TYPE 2 PER DM-4.1, 5'-6" X 22.8'

P.I. = Sta. 80+82.14
 $\Delta = 29^{\circ}46'08''$ LT
 $D_c = 26^{\circ}02'37''$
 $R = 220.00'$
 $T = 58.47'$
 $L = 114.30'$
 $E = 7.64'$



PLAN - SR 529
 STA. 76+00 TO STA. 81+00

DESIGN AGENCY
Mead & Hunt
 CLIENT
 DESIGNER
 ANM
 REVIEWER
 DCB 10/09/20
 PROJECT ID
 109550
 SHEET TOTAL
 P.57 161

