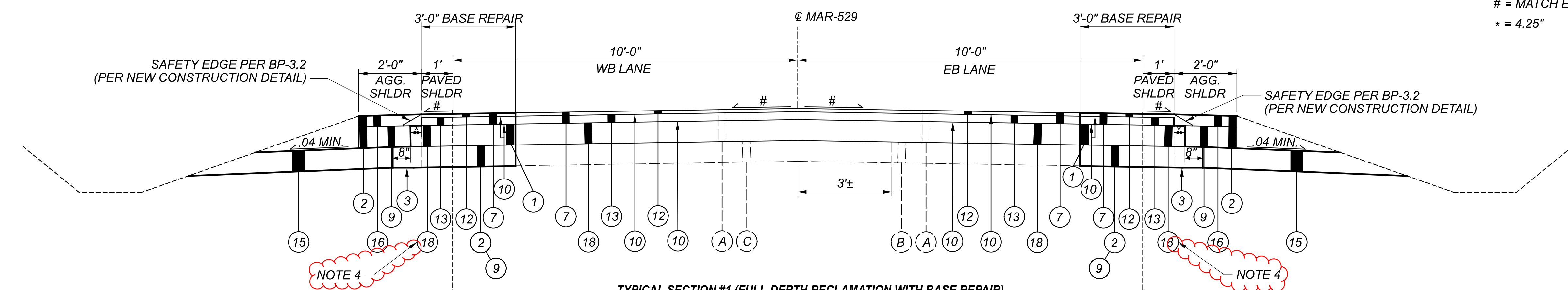
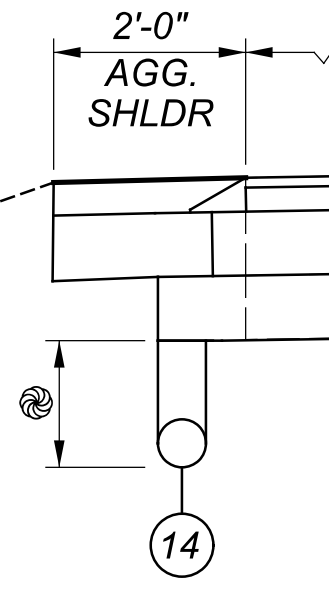


⊗ = SEE DRAINAGE SUBSUMMARY FOR DEPTH AND QUANTITIES
 # = MATCH EX. CROSS SLOPE
 * = 4.25"

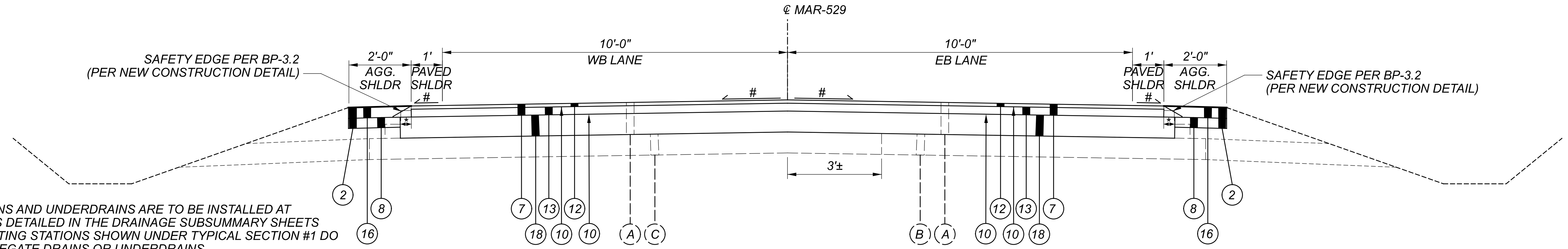
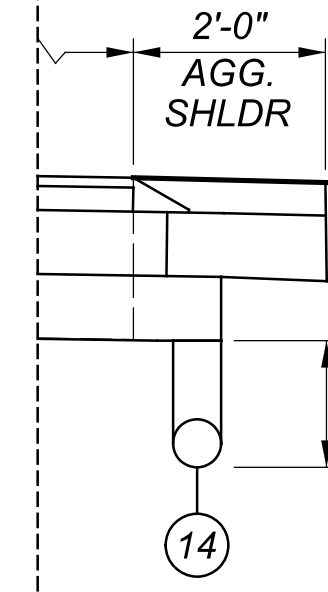


ALTERNATE SHOULDER DETAIL WB
 (SEE DRAINAGE SUBSUMMARY FOR LOCATIONS)



TYPICAL SECTION #1 (FULL-DEPTH RECLAMATION WITH BASE REPAIR)			
MAR-529 WB		MAR-529 EB	
STA. 137+30.23	TO STA. 144+65.31 = 735 FT	STA. 137+30.23	TO STA. 144+65.31 = 735 FT
STA. 145+95.80	TO STA. 171+47.45 = 2552 FT	STA. 145+95.80	TO STA. 171+47.45 = 2552 FT
STA. 171+72.45	TO STA. 181+73.67 = 1001 FT	STA. 171+72.45	TO STA. 181+73.67 = 1001 FT
STA. 181+98.75	TO STA. 208+69.19 = 2670 FT	STA. 181+98.75	TO STA. 208+69.19 = 2670 FT
STA. 219+84.19	TO STA. 239+98.87 = 2015 FT	STA. 219+84.19	TO STA. 239+98.87 = 2015 FT
STA. 241+31.59	TO STA. 248+94.27 = 763 FT	STA. 241+31.59	TO STA. 248+94.27 = 763 FT
STA. 249+13.74	TO STA. 257+25.78 = 812 FT	STA. 299+61.74	TO STA. 304+86.40 = 525 FT
STA. 257+51.02	TO STA. 268+00.00 = 1049 FT	STA. 307+17.67	TO STA. 329+17.75 = 2200 FT
STA. 268+35.00	TO STA. 297+92.25 = 2957 FT	STA. 329+42.92	TO STA. 338+00.00 = 857 FT
STA. 298+17.33	TO STA. 304+86.40 = 669 FT	STA. 338+50.00	TO STA. 343+28.92 = 479 FT
STA. 307+17.67	TO STA. 319+81.21 = 1264 FT	STA. 343+54.00	TO STA. 348+73.18 = 519 FT
STA. 377+61.00	TO STA. 381+29.27 = 368 FT	STA. 348+98.18	TO STA. 376+25.00 = 2727 FT
STA. 382+09.55	TO STA. 415+93.72 = 3384 FT	STA. 377+61.00	TO STA. 381+29.27 = 368 FT
STA. 416+17.91	TO STA. 425+43.05 = 925 FT	STA. 400+57.38	TO STA. 425+43.05 = 2486 FT
STA. 425+62.22	TO STA. 432+32.85 = 671 FT		

ALTERNATE SHOULDER DETAIL EB
 (SEE DRAINAGE SUBSUMMARY FOR LOCATIONS)



TYPICAL SECTION #2 (FULL-DEPTH RECLAMATION)			
MAR-529 WB		MAR-529 EB	
STA. 181+73.67	TO STA. 181+98.75 = 25 FT	STA. 181+73.67	TO STA. 181+98.75 = 25 FT
STA. 248+94.27	TO STA. 249+13.74 = 19 FT	STA. 248+94.27	TO STA. 268+00.00 = 1906 FT
STA. 257+25.78	TO STA. 257+51.02 = 25 FT	STA. 268+35.00	TO STA. 299+61.74 = 3127 FT
STA. 297+92.25	TO STA. 298+17.33 = 25 FT	STA. 329+17.75	TO STA. 329+42.92 = 25 FT
STA. 319+81.21	TO STA. 348+73.18 = 2892 FT	STA. 338+00.00	TO STA. 338+50.00 = 50 FT
STA. 348+98.18	TO STA. 377+61.00 = 2863 FT	STA. 343+28.92	TO STA. 343+54.00 = 25 FT
STA. 415+93.72	TO STA. 416+17.91 = 24 FT	STA. 376+25.00	TO STA. 377+61.00 = 136 FT
		STA. 400+57.38	TO STA. 425+43.05 = 2486 FT
		STA. 425+62.22	TO STA. 432+32.85 = 671 FT

- NOTES:
- 1) AGGREGATE DRAINS AND UNDERDRAINS ARE TO BE INSTALLED AT SPECIFIC LOCATIONS DETAILED IN THE DRAINAGE SUBSUMMARY SHEETS P.33 -P.34. THE LIMITING STATIONS SHOWN UNDER TYPICAL SECTION #1 DO NOT APPLY TO AGGREGATE DRAINS OR UNDERDRAINS.
 - 2) CONTRACTOR SHALL RESTORE THE EXISTING GRADED SHOULDER (OUTSIDE OF LIMITS OF PROP. AGGREGATE SHOULDER) AND FORESLOPE TO THE CONDITION THAT EXISTED PRIOR TO THE PROJECT. THE COST SHALL BE CONSIDERED INCIDENTAL TO THE SURFACE COURSE.
 - 3) THE DEPTH OF EXISTING PAVEMENT AT THE EDGE OF SHOULDER VARIES. SEE REFERENCE DOCUMENT "MAR-112818-CORE REPORT.XLSX" FOR MORE INFORMATION.
 - 4) CONTRACTOR SHALL FILL THE VOID CREATED BY THE BASE REPAIR OPERATION WITH MILLINGS OR OTHER MATERIAL (AS DETERMINED BY THEIR MIX DESIGN) PRIOR TO RECLAMATION. THE MATERIAL USED TO FILL THE VOID SHALL BE CONSIDERED INCIDENTAL TO ITEM 690E98300 FULL DEPTH RECLAIMED BASE COURSE, 8.0" DEEP.


LEGEND

- | | | | |
|--|---|---|--|
| (A) EXISTING 12.0" AVG. ASPHALT PAVEMENT (VARIES 10.0" TO 14.0") | (4) ITEM 209 - PREPARING SUBGRADE FOR SHOULDER PAVING | (10) ITEM 407 - NON-TRACKING TACK COAT (RATE AS PER CMS 407.06-1) | (17) NOT USED |
| (B) EXISTING 8" AGGREGATE BASE | (5) ITEM 254 - PAVEMENT PLANING, ASPHALT CONCRETE, 1.25" | (11) ITEM 441 - 1.50" ASPHALT CONCRETE SURFACE COURSE, TYPE 1, (446), PG64-22 | (18) ITEM 690 - FULL DEPTH RECLAIMED BASE COURSE, 8" DEEP |
| (C) EXISTING 8" WATERBOUND MACADAM BASE | (5A) ITEM 254 - PAVEMENT PLANING, ASPHALT CONCRETE, 1.50" | (12) ITEM 441 - 1.25" ASPHALT CONCRETE SURFACE COURSE, TYPE 1, (446), PG64-22 | ITEM 690 - ADDITIONAL ADDITIVES (CEMENT, FLY ASH, LIME) |
| (D) EXISTING 1.5" ASPHALT SURFACE | (6) ITEM 254 - PAVEMENT PLANING, ASPHALT CONCRETE, 4.25" | (13) ITEM 441 - 3.0" ASPHALT CONCRETE INTERMEDIATE COURSE, TYPE 2, (446) | ITEM 690 - CORRECTIVE AGGREGATE FOR FDR (FINE, COARSE OR RAP) |
| (1) ITEM 202 - PAVEMENT REMOVED, AS PER PLAN | (7) ITEM 254 - PAVEMENT PLANING, ASPHALT CONCRETE, AS PER PLAN, 4.25" | (14) ITEM 605 - 4" OR 6" BASE PIPE UNDERDRAINS | ITEM 690 - EMULSIFIED ASPHALT |
| (2) ITEM 203 - EXCAVATION | (8) ITEM 304 - 4.0" AGGREGATE BASE | (15) ITEM 605 - AGGREGATE DRAINS | ITEM 690 - MIXTURE DESIGN FOR FULL DEPTH RECLAIMED BASE COURSE |
| (3) ITEM 204 - SUBGRADE COMPACTION | (9) ITEM 304 - 8.0" AGGREGATE BASE | (16) ITEM 617 - 4.25" COMPACTED AGGREGATE | |

TYPICAL SECTIONS

MAR-529-2.59

MODEL: 112818_GY001 PAPER SIZE: 34x22 (in.) DATE: 1/30/2023 TIME: 7:51:52 AM USER: a.hollow1 pvc:\hollod-pw-bentley.com\hollod-pw-02\Documents\01 Active Projects\District 06\Marion\112818\400-Engineering\Roadway\Sheets\112818_GY001.dgn

DESIGN AGENCY

 DESIGNER
 AMH
 REVIEWER
 DKR 07/19/22
 PROJECT ID
 112818
 SHEET TOTAL
 P.4 P.91