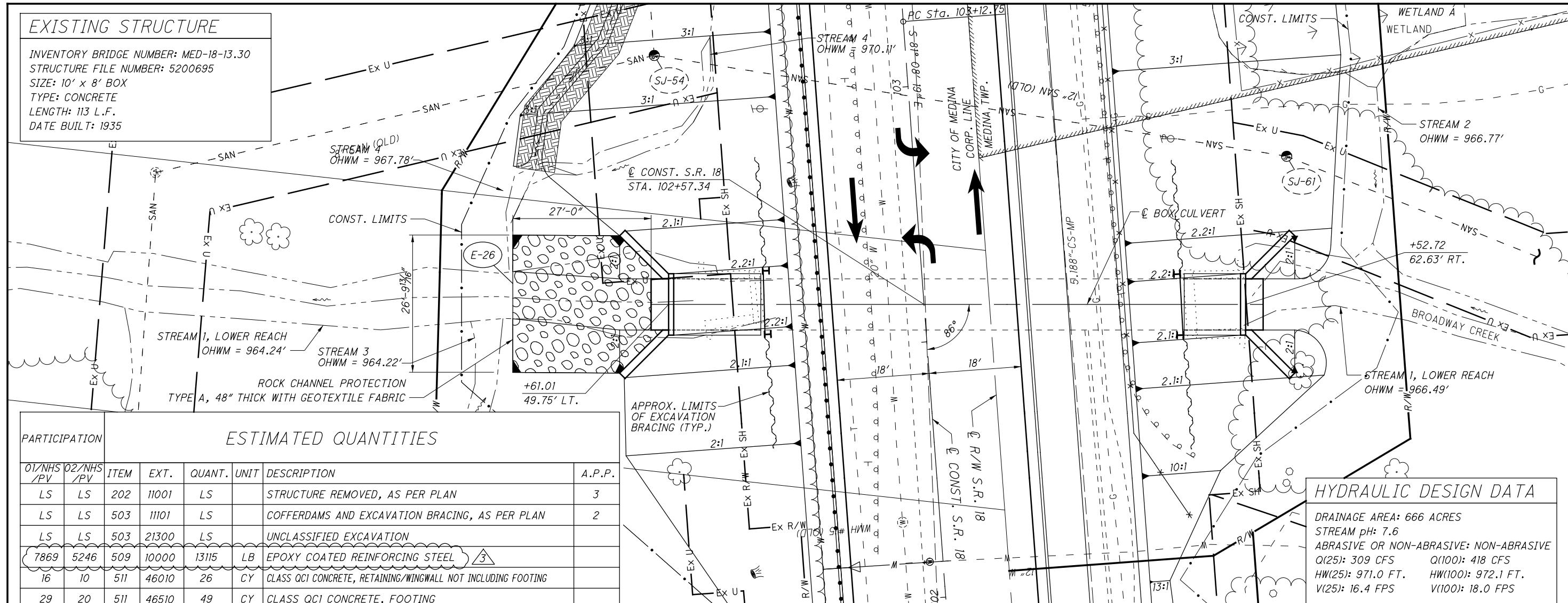


EXISTING STRUCTURE

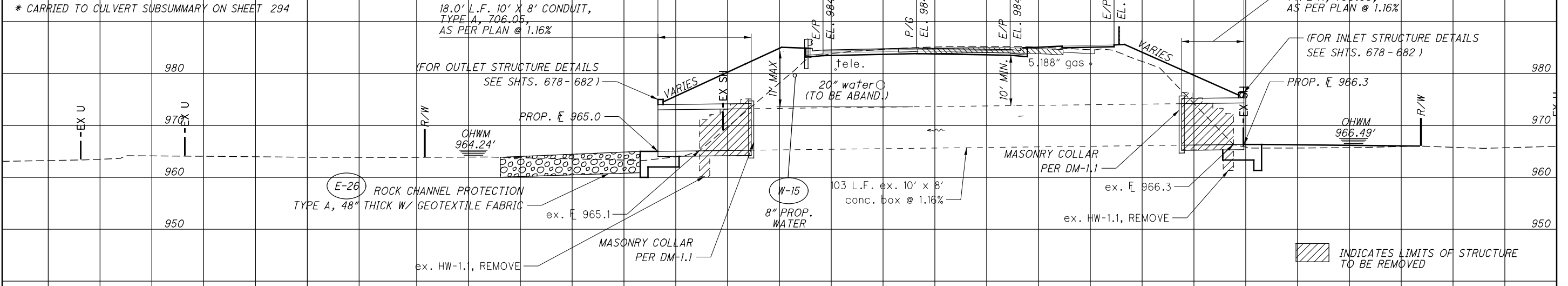
INVENTORY BRIDGE NUMBER: MED-18-13.30
 STRUCTURE FILE NUMBER: 5200695
 SIZE: 10' x 8' BOX
 TYPE: CONCRETE
 LENGTH: 113 L.F.
 DATE BUILT: 1935



PARTICIPATION		ESTIMATED QUANTITIES						A.P.P.
01/NHS /PV	02/NHS /PV	ITEM	EXT.	QUANT.	UNIT	DESCRIPTION	A.P.P.	
LS	LS	202	11001	LS		STRUCTURE REMOVED, AS PER PLAN	3	
LS	LS	503	11101	LS		COFFERDAMS AND EXCAVATION BRACING, AS PER PLAN	2	
LS	LS	503	21300	LS		UNCLASSIFIED EXCAVATION		
7869	5246	509	10000	13115	LB	EPOXY COATED REINFORCING STEEL 3		
16	10	511	46010	26	CY	CLASS QCI CONCRETE, RETAINING/WINGWALL NOT INCLUDING FOOTING		
29	20	511	46510	49	CY	CLASS QCI CONCRETE, FOOTING		
33	22	512	10100	55	SY	SEALING OF CONCRTE SURFACES (EPOXY-URETHANE)		
82	54	512	33000	136	SY	TYPE 2 WATERPROOFING		
26	18	516	13600	44	SF	1" PREFORMED EXPANSION JOINT FILLER		
7	5	518	21200	12	CY	POROUS BACKFILL WITH GEOTEXTILE FABRIC		
62	41	601	*32004	103	CY	ROCK CHANNEL PROTECTION, TYPE A, WITH GEOTEXTILE FABRIC		
18	12	611	95501	30	FT	10' x 8' CONDUIT, TYPE A, 706.05, AS PER PLAN	3	

HYDRAULIC DESIGN DATA

DRAINAGE AREA: 666 ACRES
 STREAM pH: 7.6
 ABRASIVE OR NON-ABRASIVE: NON-ABRASIVE
 Q(25): 309 CFS Q(100): 418 CFS
 HW(25): 971.0 FT. HW(100): 972.1 FT.
 V(25): 16.4 FPS V(100): 18.0 FPS

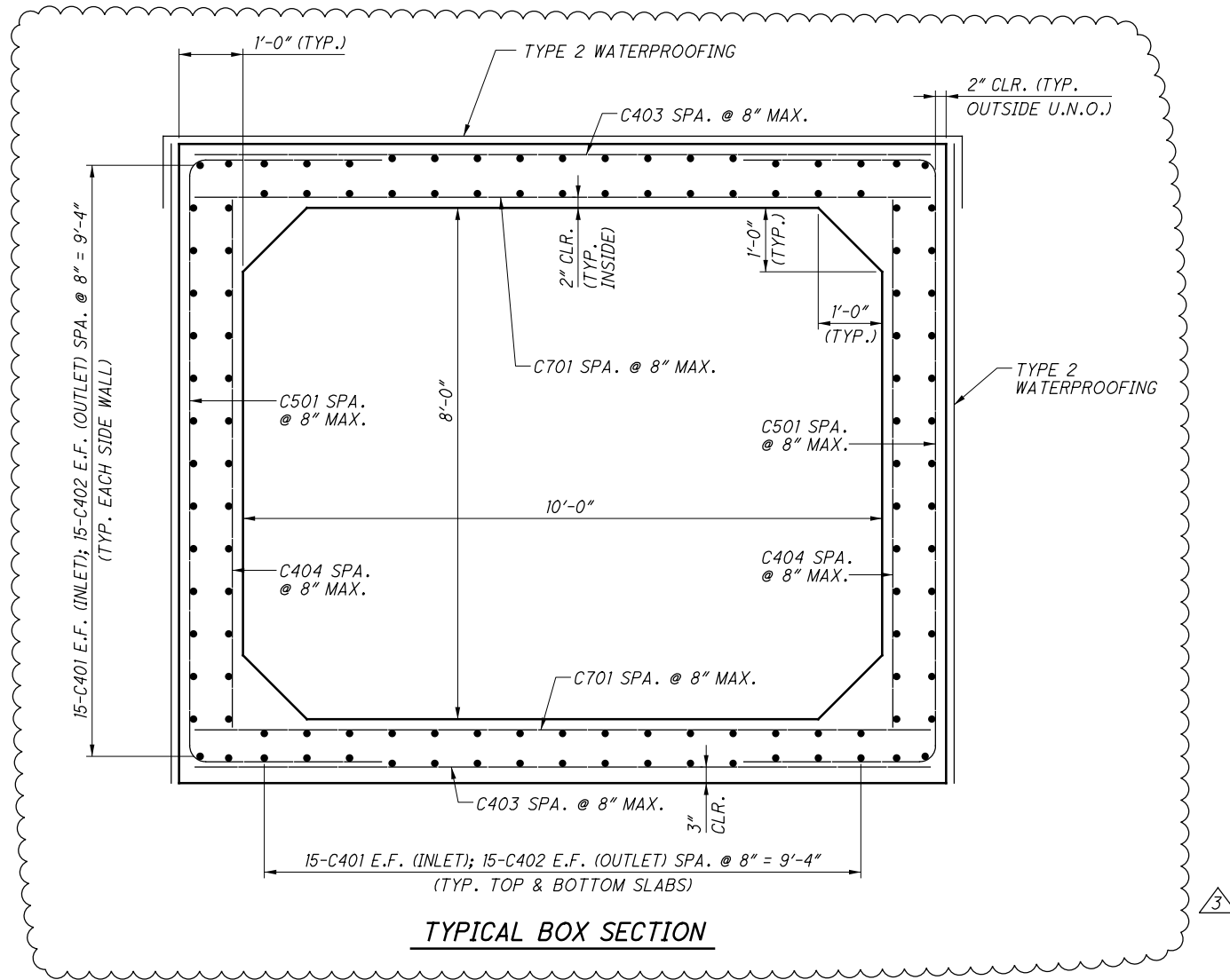


NO.	DESCRIPTION	REV. BY	DATE
3	REBAR QUANTITY REVISED	DJC	1/6/20

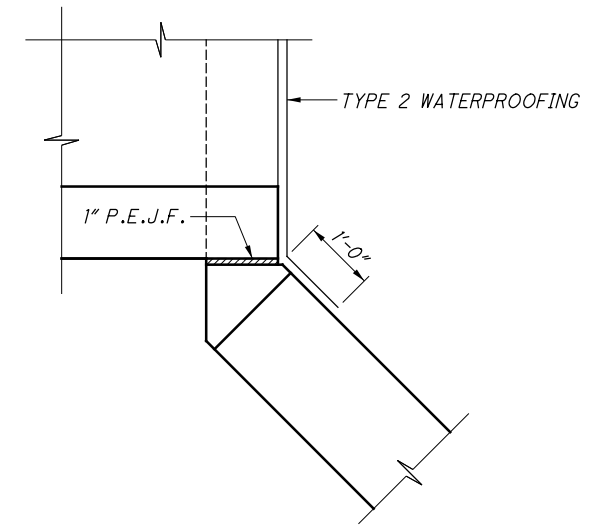
CULVERT DETAIL - S.R. 18
CULVERT #1 - STA. 102+57.34

MED-18-12.99

01:2013\2013013\MED\9295\DRAWING\SHEETS\929530001.DGN
 1/6/2021
 10:41:46 AM
 000181STD_USER



TYPICAL BOX SECTION



WATERPROOFING DETAILS

NO.	DESCRIPTION	REV. BY	DATE
3	REINFORCING STEEL ADDED TO BOX SECTION	DJC	1/6/20

MED-18-12.99
PID No. 92953

CULVERT DETAILS AND GENERAL NOTES
 CULVERT #1
 STA. 102+57.34

DESIGNED	DRAWN	REVIEWED	DATE
REV	RPR	DGN	9-21-20
CHECKED	REVISED	STRUCTURE FILE NUMBER	
DJC			

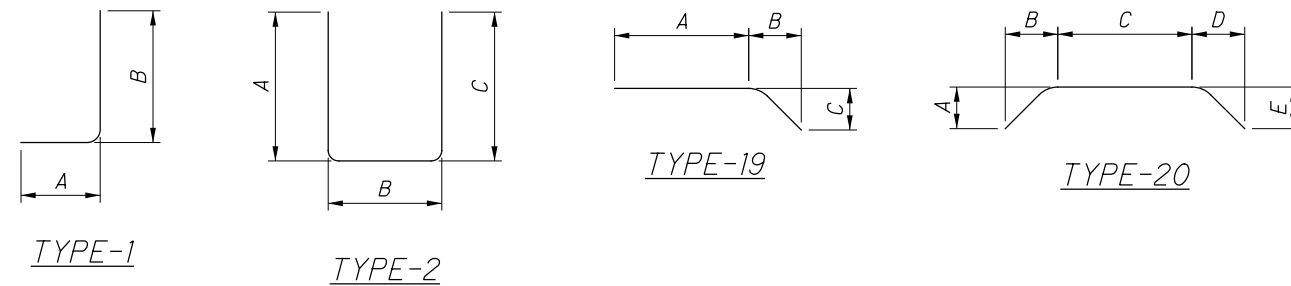
MARK	NUMBER	LENGTH	WEIGHT	TYPE	DIMENSIONS						INC.
					A	B	C	D	E	R	
WINGWALLS											
W501	8 SR OF	6'-4" TO	638	STR							0'-6 1/2"
	9	10'-8"									
W502	40	11'-8"	487	STR							
W503	8	7'-10"	65	STR							
W504	8	3'-11"	33	STR							
W505	8	12'-7"	105	STR							
W506	8	10'-9"	90	STR							
W507	32	2'-10"	95	19	2'-0"	0'-7"	0'-7"				
WINGWALLS TOTAL =			1513	LB							

MARK	NUMBER	LENGTH	WEIGHT	TYPE	DIMENSIONS						INC.
					A	B	C	D	E	R	
HEADWALLS											
H501	18	1'-2"	22	STR							
H502	8	11'-8"	97	STR							
H503	36	1'-11"	72	2	0'-9"	0'-8"	0'-9"				
HEADWALLS TOTAL =			191	LB							

MARK	NUMBER	LENGTH	WEIGHT	TYPE	DIMENSIONS						INC.
					A	B	C	D	E	R	
CAST-IN-PLACE BOX SECTIONS											
C401	120	11'-6"	922	STR							
C402	120	17'-6"	1403	STR							
C403	94	11'-6"	722	STR							
C404	94	8'-3"	518	STR							
C501	94	15'-4"	1503	2	3'-0"	9'-7"	3'-0"				
C701	94	11'-6"	2210	STR							
C.I.P. BOXES TOTAL =			7278	LB							

MARK	NUMBER	LENGTH	WEIGHT	TYPE	DIMENSIONS						INC.
					A	B	C	D	E	R	
FOOTING											
F501	58	7'-2"	434	STR							
	8 SR	12'-0"									
F502	OF	TO	676	STR							0'-7 1/4"
	6	15'-0"									
F503	4	12'-0"	50	STR							
F504	4	12'-7"	52	STR							
F505	46	8'-3"	396	2	3'-8"	1'-2"	3'-8"				
	4 SR	10'-7"						5'-6"			
F506	OF	TO	334	20	1'-10"	1'-10"	TO	1'-10"	1'-10"		1'-1"
	6	16'-0"						10'-11"			
F507	6	9'-8"	60	STR							
F508	4	10'-8"	45	20	1'-10"	1'-10"	5'-7"	1'-10"	1'-10"		
F509	16	5'-7"	93	1	3'-1"	2'-8"					
F510	14	4'-4"	63	1	1'-0"	3'-6"					
F601	72	7'-7"	820	1	1'-0"	6'-9"					
F801	58	7'-2"	1110	STR							
FOOTING TOTAL =			4133	LB							

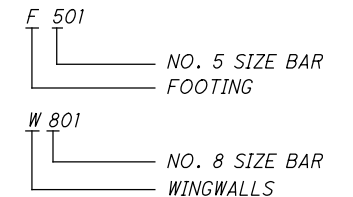
STANDARD BAR TYPES



NOTES:

1. BAR DIMENSIONS ARE OUT TO OUT UNLESS NOTED OTHERWISE.
2. ALL BARS ARE EPOXY COATED.
3. WHEN NO BAR LEG DIMENSIONS ARE SHOWN, IT INDICATES STANDARD BEND.
4. BAR SIZE AND LOCATION ARE INDICATED IN THE BAR MARK. THE FIRST ALPHABETICAL LETTER INDICATES LOCATION. THE NEXT DIGIT OF THE THREE DIGIT SERIES AND THE NEXT TWO DIGITS OF THE FOUR DIGIT SERIES INDICATE BAR SIZE NUMBER.

EXAMPLES:



NO.	DESCRIPTION	REV. BY	DATE
3	REINFORCING STEEL LIST ADDED FOR BOX SECTIONS	DJC	1/6/20