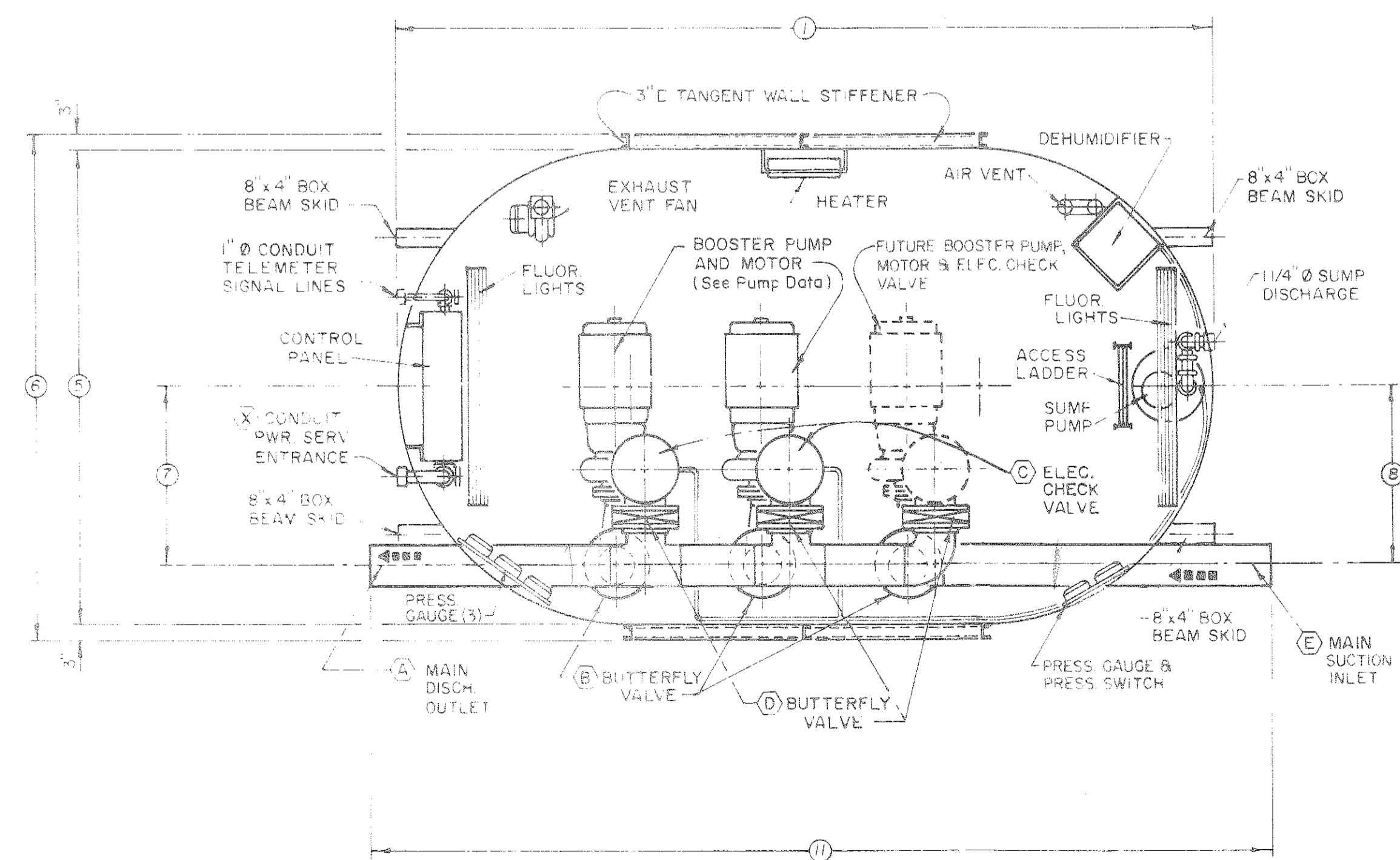
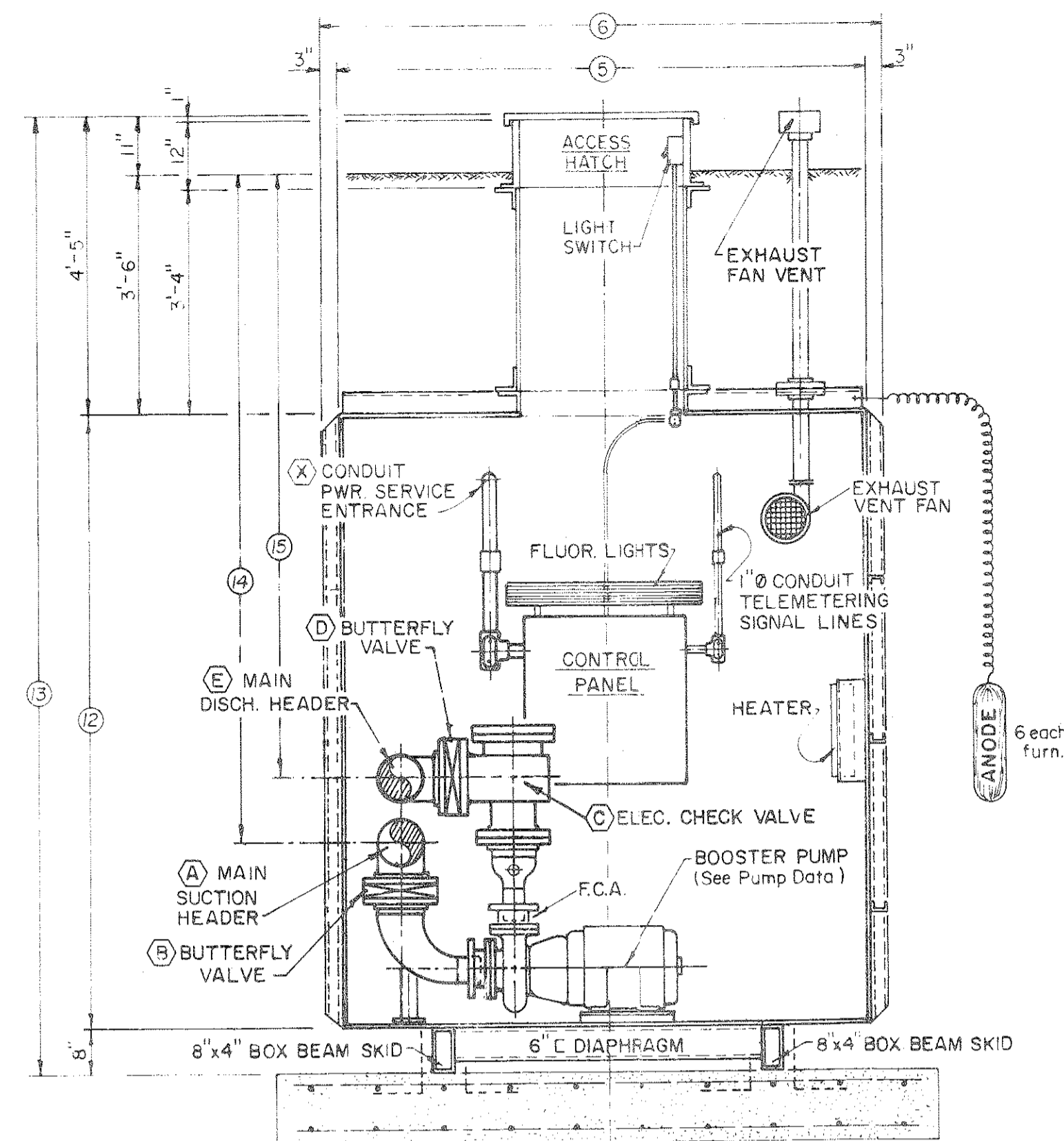


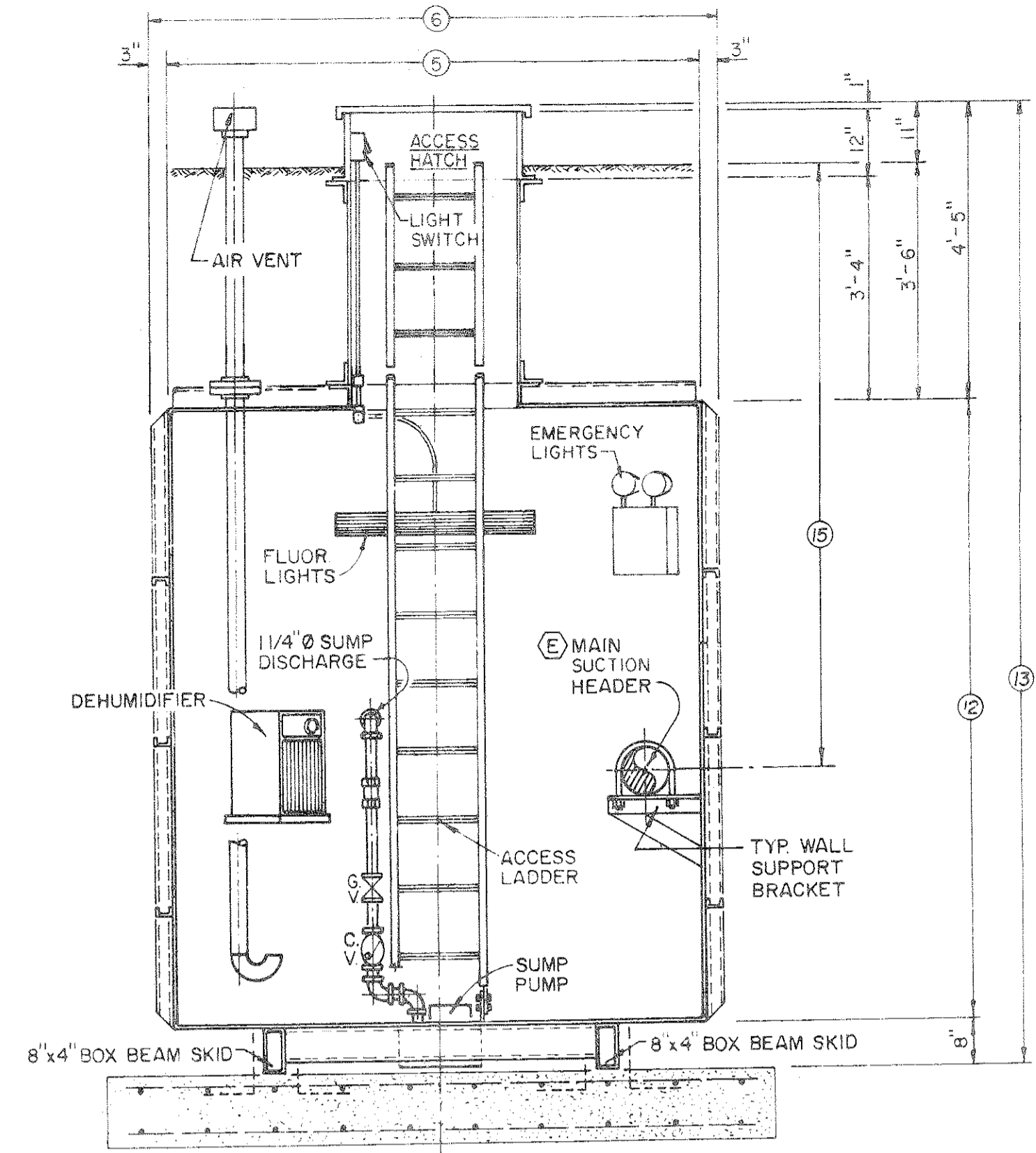
EXTERIOR PLAN



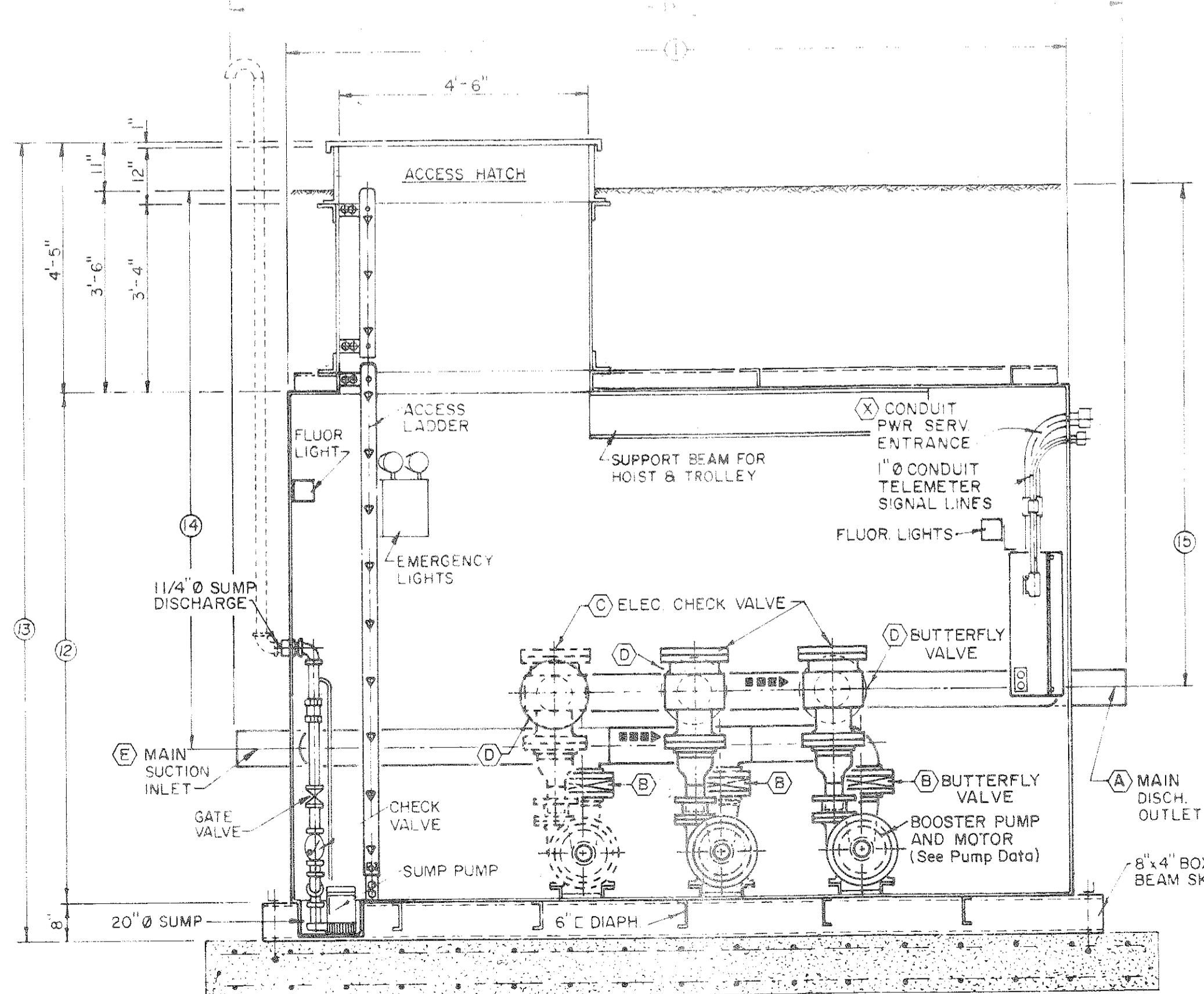
INTERIOR PLAN



SECTION "B-B"



SECTION "C-C"



SECTION "A-A"

DESIGN CRITERIA

Type Controls - TELEMETERING (By Others)
 Power Service - 120 VOLT, 60 HERTZ, 3 PHASE
 (X) = 2 1/2" DIA CONDUIT, POWER SERVICE ENTRANCE

PUMP DATA

Design Capacity: 300 G.P.M. AT 176 FEET T.D.H.
 WITH FEET MIN. SUCTION HEAD
 Type: HORIZ., CLOSE COUPLED, END SUCTION, CENTRIFUGAL
 Manufacturer: BERKELEY
 Model: B 2 1/2 JPB.M. (Mech. Seal)
 Size: 4" SUCTION, 2 1/2" DISCHARGE
 Motor: 30 H.P., 1750 R.P.M., 286 TC FRAME, O.D.P.

SIZING & DIMENSIONAL DATA

(A) = 12"	(7) = 18'-0"	(B) = 3'-9"
(1) = 6"	(8) = 9'-0"	(10) = 2'-9"
(2) = 6"	(9) = 4'-6"	(11) = 2'-5"
(3) = 6"	(10) = 17'-6"	(12) = 18'-0"
(4) = 6"	(11) = 9'-0"	(13) = 8'-0"
(5) = 12"	(12) = 9'-6"	(14) = 13'-1"
	(13) = 3'-9"	(15) = 8'-3"
		(16) = 10'-7/2"

HEIGHT & WIDTH IS ADEQUATE TO REMOVE ALL EQUIPMENT

REV. & RECD. 12/4/78 THC-050878

E
F
P

ENGINEERED FLUID PROCESS
 P. O. DRAWER 723 • CENTRALIA, ILLINOIS 62801 • 618-533-1351

RTE 18 PUMP

WATER BOOSTER PUMP STATION

MEDINA COUNTY SEWER DISTRICT No. 500
 WATER IMPROVEMENT 500-W-7
 MEDINA COUNTY, OHIO

JOB REF. No. 81428-04-78 | STD | DRWG. No. 81428-B-001.1