



WORK LOCATION

LEGEND:
 SHT#1-LOCATION MAP
 SHT#1A-TABULATION SHEET
 SHT#1B- RETIREMENT SHEET
 SHTS#2-13-CONSTRUCTION PRINTS
 CONTACT RANDY HOWARD 2 WEEKS
 PRIOR TO CONSTRUCTION
 330-416-4614

PERMITS TO BE ISSUED:
 ODOT DISTRICT #3
 SHEETS# 1-13 (NO A OR B SHEETS)

SPECIAL NOTES:
 CUTSHEETS WILL BE REQUIRED

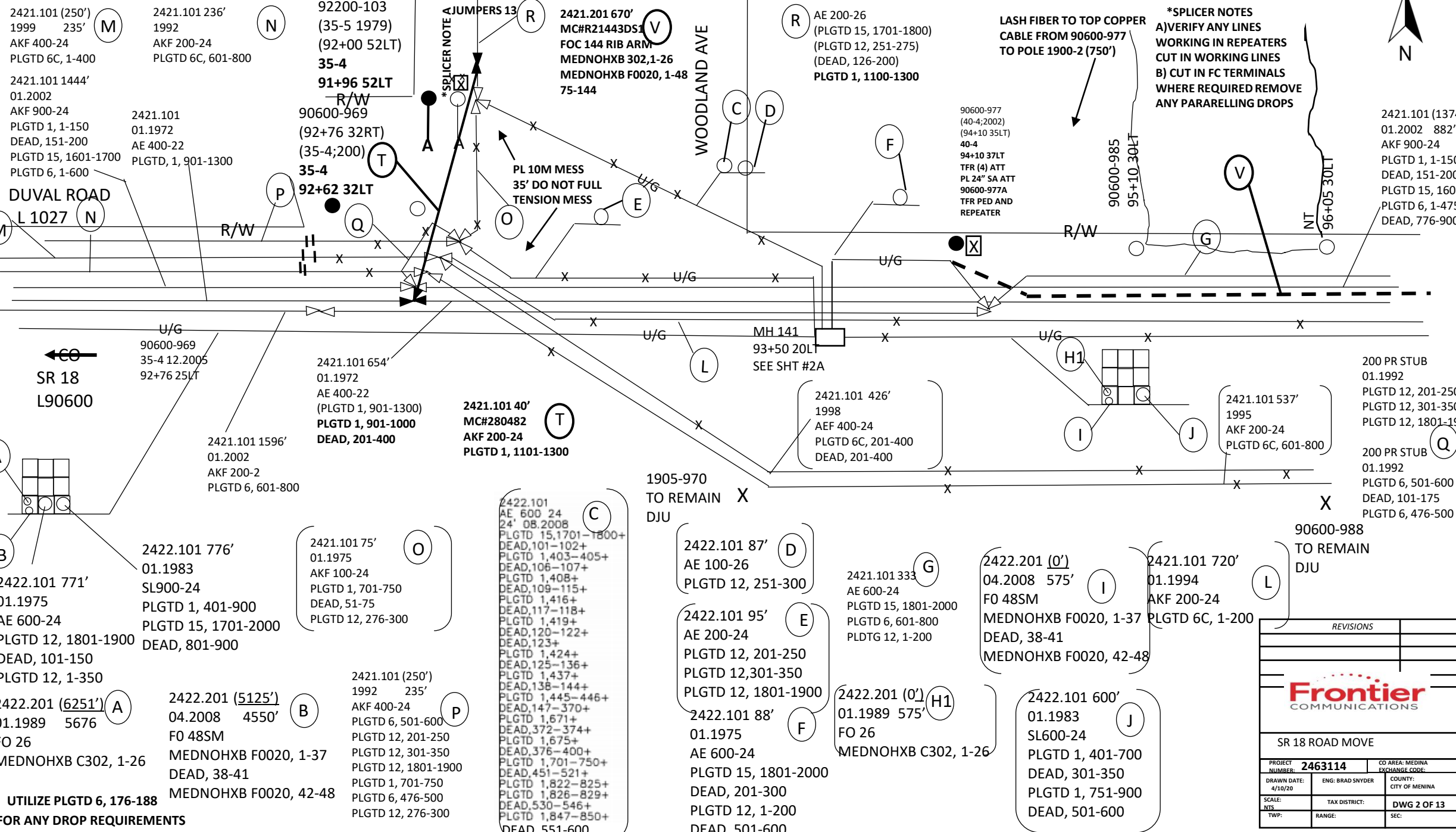
PROPOSALS TO BE ISSUE TO:
 OE AND SPECTRUM
 WILL BE ISSUED VIA
 OH. Poleadmin@ftr.com

GENERAL CONSTRUCTION NOTES:
 -ODOT CONTRACTOR TO REMOVE
 MANHOLES GOING EAST FROM MH
 141(MH 141 TO REMAIN)
 -UNDERGROUND CABLES AND
 CONDUITS TO BE ABANDONED IN
 PLACE
 -ODOT CONTRACTOR TO CONTACT
 RANDY HOWARD TO RAISE
 MANHOLES TO GRADE AT MH
 140+141

2411 Pole
 2421 Aerial Copper Cable
 2423 Direct Buried Telephone Cable
 2422 Underground Telephone Cable inside a conduit

Frontier COMMUNICATIONS		
SR 18 ROAD MOVE		
PROJECT NUMBER: 2463114	CO AREA: MEDINA EXCHANGE CODE:	
DRAWN DATE: 4/10/20	ENG: BRAD SNYDER	COUNTY: CITY OF MENINA
SCALE: N.T.S.	TAX DISTRICT:	DWG 1 OF 13
TWP:	RANGE:	SEC:

All Frontier facilities from Sta. 85+00 Lt. to 92+62 Lt. will remain in place; the existing telephone manhole at Sta. 85+85, 30' Lt. may need to be adjusted to grade by Frontier during construction.



2421.101 (250')
1999 235' (M)
AKF 400-24
PLGTD 6C, 1-400

2421.101 236' (N)
1992
AKF 200-24
PLGTD 6C, 601-800

92200-103
(35-5 1979)
(92+00 52LT)
35-4
91+96 52LT

2421.201 670' (V)
MC#R21443DS1
FOC 144 RIB ARM
MEDNOHXB 302, 1-26
MEDNOHXB F0020, 1-48
75-144

(R) AE 200-26
(PLGTD 15, 1701-1800)
(PLGTD 12, 251-275)
(DEAD, 126-200)
PLGTD 1, 1100-1300

LASH FIBER TO TOP COPPER
CABLE FROM 90600-977
TO POLE 1900-2 (750')

*SPLICER NOTES
A) VERIFY ANY LINES
WORKING IN REPEATERS
CUT IN WORKING LINES
B) CUT IN FC TERMINALS
WHERE REQUIRED REMOVE
ANY PARARELLING DROPS

2421.101 (1374')
01.2002 882'
AKF 900-24
PLGTD 1, 1-150
DEAD, 151-200
PLGTD 15, 1601-1700
PLGTD 6, 1-475
DEAD, 776-900

2421.101 1444'
01.2002
AKF 900-24
PLGTD 1, 1-150
DEAD, 151-200
PLGTD 15, 1601-1700
PLGTD 6, 1-600

2421.101
01.1972
AE 400-22
PLGTD, 1, 901-1300

90600-969
(92+76 32RT)
(35-4;200)
35-4
92+62 32LT

PL 10M MESS
35' DO NOT FULL
TENSION MESS

90600-977
(40-4;2002)
(94+10 35LT)
40-4
94+10 37LT
TFR (4) ATT
PL 24" SA ATT
90600-977A
TFR PED AND
REPEATER

90600-985
95+10 30LT

DUVAL ROAD
L 1027

R/W

R/W

NT

96+05 30LT

SR 18
L90600

90600-969
35-4 12.2005
92+76 25LT

2421.101 654'
01.1972
AE 400-22
(PLGTD 1, 901-1300)
PLGTD 1, 901-1000
DEAD, 201-400

2421.101 40'
MC#280482 (T)
AKF 200-24
PLGTD 1, 1101-1300

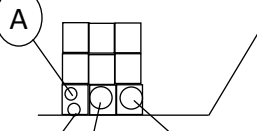
MH 141
93+50 20LT
SEE SHT #2A

2421.101 426'
1998
AEF 400-24
PLGTD 6C, 201-400
DEAD, 201-400

2421.101 537'
1995
AKF 200-24
PLGTD 6C, 601-800

200 PR STUB
01.1992
PLGTD 12, 201-250
PLGTD 12, 301-350
PLGTD 12, 1801-1900

200 PR STUB (Q)
01.1992
PLGTD 6, 501-600
DEAD, 101-175
PLGTD 6, 476-500



2421.101 1596'
01.2002
AKF 200-2
PLGTD 6, 601-800

2422.101 776'
01.1983
SL900-24
PLGTD 1, 401-900
PLGTD 15, 1701-2000
DEAD, 801-900

2421.101 75'
01.1975 (O)
AKF 100-24
PLGTD 1, 701-750
DEAD, 51-75
PLGTD 12, 276-300

1905-970
TO REMAIN X
DJU

2422.101 87' (D)
AE 100-26
PLGTD 12, 251-300

2421.101 333 (G)
AE 600-24
PLGTD 15, 1801-2000
PLGTD 6, 601-800
PLDTG 12, 1-200

2422.201 (0') (I)
04.2008 575'
FO 48SM
MEDNOHXB F0020, 1-37
DEAD, 38-41
MEDNOHXB F0020, 42-48

2421.101 720' (L)
01.1994
AKF 200-24
PLGTD 6C, 1-200

90600-988
TO REMAIN
DJU

2422.101 771'
01.1975
AE 600-24
PLGTD 12, 1801-1900
DEAD, 101-150
PLGTD 12, 1-350

2422.201 (6251') (A)
01.1989 5676
FO 26
MEDNOHXB C302, 1-26

2422.201 (5125') (B)
04.2008 4550'
FO 48SM
MEDNOHXB F0020, 1-37
DEAD, 38-41
MEDNOHXB F0020, 42-48

2421.101 (250')
1992 235' (P)
AKF 400-24
PLGTD 6, 501-600
PLGTD 12, 201-250
PLGTD 12, 301-350
PLGTD 12, 1801-1900
PLGTD 1, 701-750
PLGTD 6, 476-500
PLGTD 12, 276-300

2422.101 (C)
AE 600 24
24' 08.2008
PLGTD 15, 1701-1800+
DEAD, 101-102+
PLGTD 1, 403-405+
DEAD, 106-107+
PLGTD 1, 408+
DEAD, 109-115+
PLGTD 1, 416+
DEAD, 117-118+
PLGTD 1, 419+
DEAD, 120-122+
DEAD, 123+
PLGTD 1, 424+
DEAD, 125-136+
PLGTD 1, 437+
DEAD, 138-144+
PLGTD 1, 445-446+
DEAD, 147-370+
PLGTD 1, 671+
DEAD, 372-374+
PLGTD 1, 675+
DEAD, 376-400+
PLGTD 1, 701-750+
DEAD, 451-521+
PLGTD 1, 822-825+
PLGTD 1, 826-829+
DEAD, 530-546+
PLGTD 1, 847-850+
DEAD, 551-600

2422.101 95' (E)
AE 200-24
PLGTD 12, 201-250
PLGTD 12, 301-350
PLGTD 12, 1801-1900

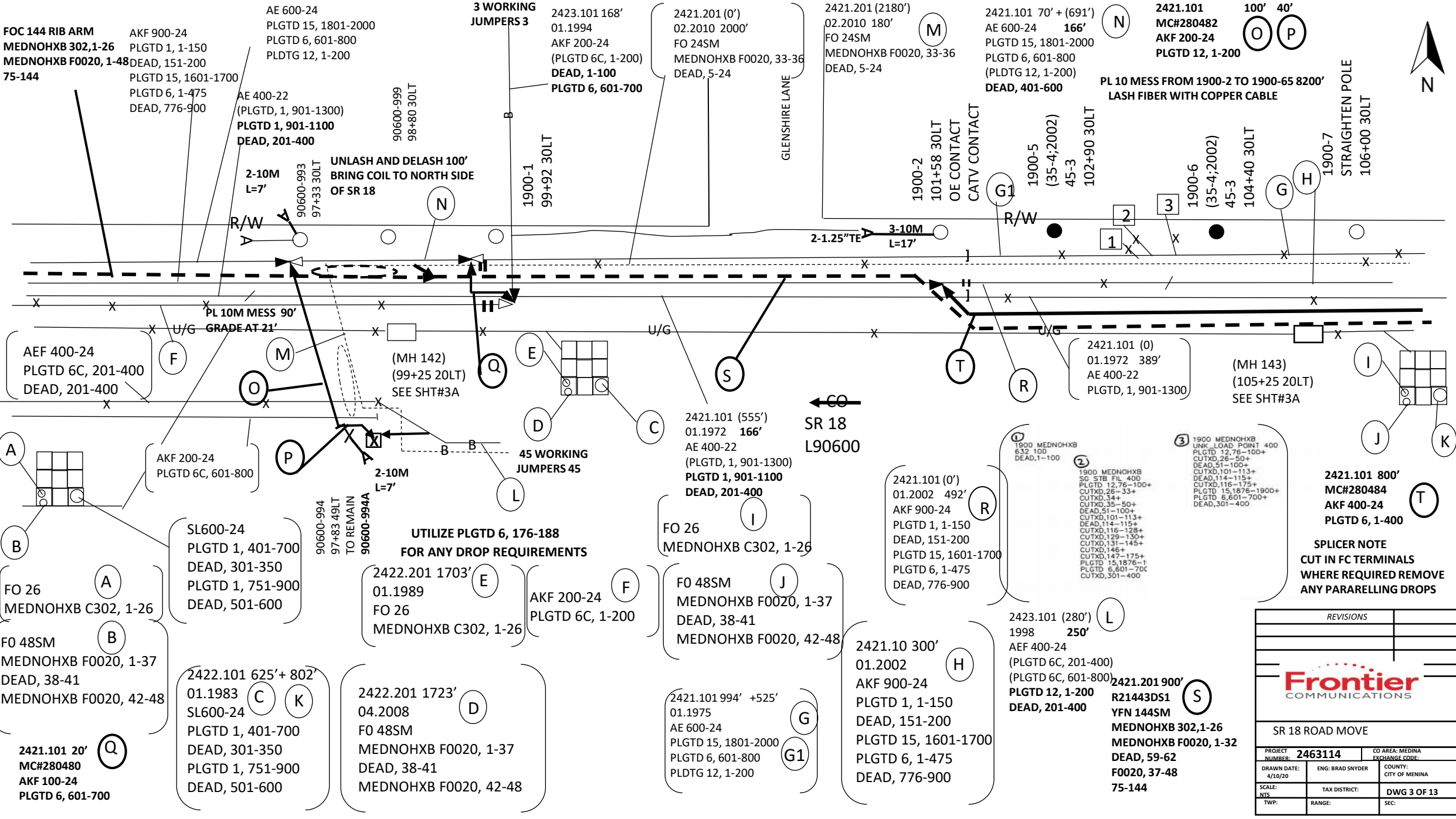
2422.101 88' (F)
01.1975
AE 600-24
PLGTD 15, 1801-2000
DEAD, 201-300
PLGTD 12, 1-200
DEAD, 501-600

2422.201 (0') (H1)
01.1989 575'
FO 26
MEDNOHXB C302, 1-26

2422.101 600' (J)
01.1983
SL600-24
PLGTD 1, 401-700
DEAD, 301-350
PLGTD 1, 751-900
DEAD, 501-600

UTILIZE PLGTD 6, 176-188
FOR ANY DROP REQUIREMENTS

REVISIONS		
Frontier COMMUNICATIONS		
SR 18 ROAD MOVE		
PROJECT NUMBER: 2463114	CO AREA: MEDINA	EXCHANGE CODE:
DRAWN DATE: 4/10/20	ENG: BRAD SNYDER	COUNTY: CITY OF MEDINA
SCALE: NTS	TAX DISTRICT:	DWG 2 OF 13
TWP:	RANGE:	SEC:



FOC 144 RIB ARM
MEDNOHXB 302,1-26
MEDNOHXB F0020, 1-48
75-144

AKF 900-24
 PLGTD 1, 1-150
 DEAD, 151-200
 PLGTD 15, 1601-1700
 PLGTD 6, 1-475
 DEAD, 776-900

AE 600-24
 PLGTD 15, 1801-2000
 PLGTD 6, 601-800
 PLDTG 12, 1-200

3 WORKING JUMPERS 3
 2423.101 168'
 01.1994
 AKF 200-24
 (PLGTD 6C, 1-200)
DEAD, 1-100
 PLGTD 6, 601-700

2421.201 (0')
 02.2010 2000'
 FO 24SM
 MEDNOHXB F0020, 33-36
 DEAD, 5-24

2421.201 (2180')
 02.2010 180'
 FO 24SM
 MEDNOHXB F0020, 33-36
 DEAD, 5-24

2421.101 70' + (691')
 AE 600-24 **166'**
 PLGTD 15, 1801-2000
 PLGTD 6, 601-800
 (PLDTG 12, 1-200)
DEAD, 401-600

2421.101
MC#280482
AKF 200-24
PLGTD 12, 1-200

100' 40'
(O) (P)

PL 10 MESS FROM 1900-2 TO 1900-65 8200'
LASH FIBER WITH COPPER CABLE



AE 400-22
 (PLGTD, 1, 901-1300)
PLGTD 1, 901-1100
DEAD, 201-400

90600-999
 98+80 30LT

2-10M
 L=7'

UNLASH AND DELASH 100'
BRING COIL TO NORTH SIDE
OF SR 18

1900-1
 99+92 30LT

GLENSHIRE LANE

1900-2
 101+58 30LT
 OE CONTACT
 CATV CONTACT

1900-5
 (35-4;2002)
 45-3
 102+90 30LT

1900-6
 (35-4;2002)
 45-3
 104+40 30LT

1900-7
 STRAIGHTEN POLE
 106+00 30LT

AEF 400-24
 PLGTD 6C, 201-400
 DEAD, 201-400

U/G
PL 10M MESS 90'
GRADE AT 21'

(MH 142)
 (99+25 20LT)
 SEE SHT#3A

U/G

2421.101 (0)
 01.1972 389'
 AE 400-22
 PLGTD, 1, 901-1300

(MH 143)
 (105+25 20LT)
 SEE SHT#3A

SR 18
L90600

AKF 200-24
 PLGTD 6C, 601-800

SL600-24
 PLGTD 1, 401-700
 DEAD, 301-350
 PLGTD 1, 751-900
 DEAD, 501-600

90600-994
 97+83 49LT
 TO REMAIN

UTILIZE PLGTD 6, 176-188
FOR ANY DROP REQUIREMENTS

2422.201 1703'
 01.1989
 FO 26
 MEDNOHXB C302, 1-26

45 WORKING JUMPERS 45

FO 26
 MEDNOHXB C302, 1-26

FO 48SM
 MEDNOHXB F0020, 1-37
 DEAD, 38-41
 MEDNOHXB F0020, 42-48

2421.101 (0')
 01.2002 492'
 AKF 900-24
 PLGTD 1, 1-150
 DEAD, 151-200
 PLGTD 15, 1601-1700
 PLGTD 6, 1-475
 DEAD, 776-900

1900 MEDNOHXB
 632 100
 DEAD, 1-100

1900 MEDNOHXB
 SG STB FIL 400
 PLGTD 12,76-100+
 CUTXD,26-33+
 CUTXD,26-33+
 CUTXD,35-50+
 DEAD,51-100+
 CUTXD,101-113+
 DEAD,114-115+
 CUTXD,116-128+
 CUTXD,129-130+
 CUTXD,131-145+
 CUTXD,146+
 CUTXD,147-175+
 PLGTD 15,1876-1
 PLGTD 6,601-700
 CUTXD,301-400

1900 MEDNOHXB
 UNK_LOAD_POINT 400
 PLGTD 12,76-100+
 CUTXD,26-50+
 DEAD,51-100+
 CUTXD,101-113+
 DEAD,114-115+
 CUTXD,116-128+
 PLGTD 15,1876-1900+
 PLGTD 6,601-700+
 DEAD,301-400

2421.101 800'
MC#280484
AKF 400-24
PLGTD 6, 1-400

SPLICER NOTE
CUT IN FC TERMINALS
WHERE REQUIRED REMOVE
ANY PARARELLING DROPS

FO 26
 MEDNOHXB C302, 1-26

FO 48SM
 MEDNOHXB F0020, 1-37
 DEAD, 38-41
 MEDNOHXB F0020, 42-48

2422.101 625'+ 802'
 01.1983
 SL600-24
 PLGTD 1, 401-700
 DEAD, 301-350
 PLGTD 1, 751-900
 DEAD, 501-600

2422.201 1723'
 04.2008
 FO 48SM
 MEDNOHXB F0020, 1-37
 DEAD, 38-41
 MEDNOHXB F0020, 42-48

2421.101 994' +525'
 01.1975
 AE 600-24
 PLGTD 15, 1801-2000
 PLGTD 6, 601-800
 PLDTG 12, 1-200

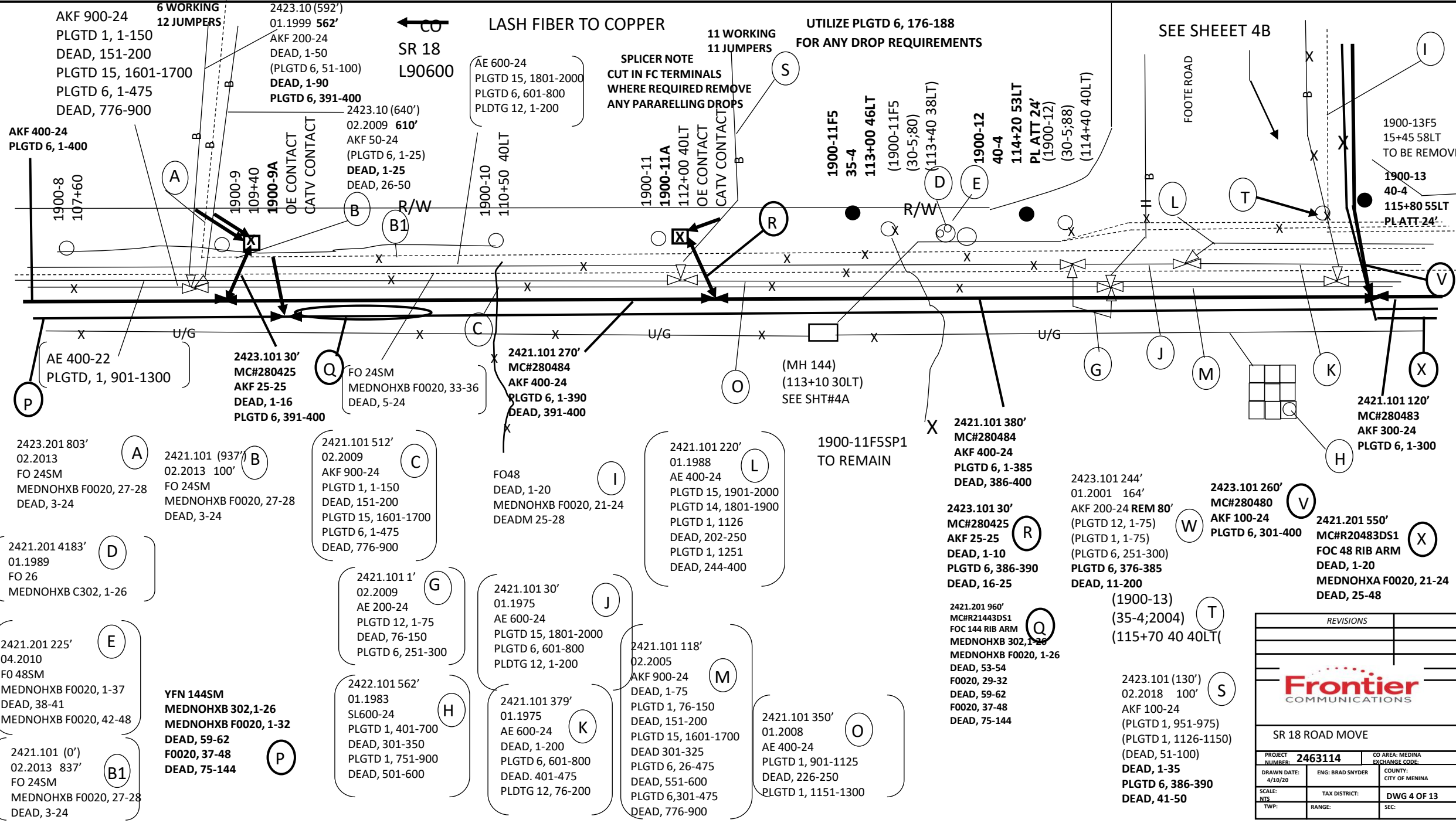
2421.10 300'
 01.2002
 AKF 900-24
 PLGTD 1, 1-150
 DEAD, 151-200
 PLGTD 15, 1601-1700
 PLGTD 6, 1-475
 DEAD, 776-900

2423.101 (280')
 1998 250'
 AEF 400-24
 (PLGTD 6C, 201-400)
 PLGTD 12, 1-200
DEAD, 201-400

2421.201 900'
R21443DS1
YFN 144SM
MEDNOHXB 302,1-26
MEDNOHXB F0020, 1-32
DEAD, 59-62
F0020, 37-48
75-144

2421.101 20'
MC#280480
AKF 100-24
PLGTD 6, 601-700

REVISIONS		
Frontier COMMUNICATIONS		
SR 18 ROAD MOVE		
PROJECT NUMBER: 2463114	CO AREA: MEDINA	EXCHANGE CODE:
DRAWN DATE: 4/10/20	ENG: BRAD SNYDER	CITY OF MEDINA
SCALE: NTS	TAX DISTRICT:	DWG 3 OF 13
TWP:	RANGE:	SEC:



AKF 900-24
PLGTD 1, 1-150
DEAD, 151-200
PLGTD 15, 1601-1700
PLGTD 6, 1-475
DEAD, 776-900

2423.10 (592')
01.1999 562'
AKF 200-24
DEAD, 1-50
(PLGTD 6, 51-100)
DEAD, 1-90
PLGTD 6, 391-400

SR 18
L90600

LASH FIBER TO COPPER

SPLICER NOTE
CUT IN FC TERMINALS
WHERE REQUIRED REMOVE
ANY PARARELLING DROPS

UTILIZE PLGTD 6, 176-188
FOR ANY DROP REQUIREMENTS

SEE SHEET 4B

AKF 400-24
PLGTD 6, 1-400

1900-8
107+60

1900-9
109+40

1900-10
110+50 40LT

AE 400-22
PLGTD, 1, 901-1300

2423.201 803'
02.2013
FO 24SM
MEDNOHXB F0020, 27-28
DEAD, 3-24

2421.201 4183'
01.1989
FO 26
MEDNOHXB C302, 1-26

2421.201 225'
04.2010
FO 48SM
MEDNOHXB F0020, 1-37
DEAD, 38-41
MEDNOHXB F0020, 42-48

2421.101 (0')
02.2013 837'
FO 24SM
MEDNOHXB F0020, 27-28
DEAD, 3-24

2423.101 30'
MC#280425
AKF 25-25
DEAD, 1-16
PLGTD 6, 391-400

2421.101 (937')
02.2013 100'
FO 24SM
MEDNOHXB F0020, 27-28
DEAD, 3-24

2421.101 512'
02.2009
AKF 900-24
PLGTD 1, 1-150
DEAD, 151-200
PLGTD 15, 1601-1700
PLGTD 6, 1-475
DEAD, 776-900

2421.101 1'
02.2009
AE 200-24
PLGTD 12, 1-75
DEAD, 76-150
PLGTD 6, 251-300

2422.101 562'
01.1983
SL600-24
PLGTD 1, 401-700
DEAD, 301-350
PLGTD 1, 751-900
DEAD, 501-600

YFN 144SM
MEDNOHXB 302, 1-26
MEDNOHXB F0020, 1-32
DEAD, 59-62
F0020, 37-48
DEAD, 75-144

2421.101 270'
MC#280484
AKF 400-24
PLGTD 6, 1-390
DEAD, 391-400

2421.101 220'
01.1988
AE 400-24
PLGTD 15, 1901-2000
PLGTD 14, 1801-1900
PLGTD 1, 1126
DEAD, 202-250
PLGTD 1, 1251
DEAD, 244-400

2421.101 118'
02.2005
AKF 900-24
DEAD, 1-75
PLGTD 1, 76-150
DEAD, 151-200
PLGTD 15, 1601-1700
DEAD 301-325
PLGTD 6, 26-475
DEAD, 551-600
PLGTD 6, 301-475
DEAD, 776-900

2421.101 350'
01.2008
AE 400-24
PLGTD 1, 901-1125
DEAD, 226-250
PLGTD 1, 1151-1300

2421.101 120'
MC#280483
AKF 300-24
PLGTD 6, 1-300

2421.101 270'
MC#280484
AKF 400-24
PLGTD 6, 1-390
DEAD, 391-400

2421.101 380'
MC#280484
AKF 400-24
PLGTD 6, 1-385
DEAD, 386-400

2423.101 244'
01.2001 164'
AKF 200-24 REM 80'
(PLGTD 12, 1-75)
(PLGTD 1, 1-75)
(PLGTD 6, 251-300)
PLGTD 6, 376-385
DEAD, 11-200
(1900-13)
(35-4;2004)
(115+70 40 40LT)

2423.101 260'
MC#280480
AKF 100-24
PLGTD 6, 301-400

2421.201 550'
MC#R20483DS1
FOC 48 RIB ARM
DEAD, 1-20
MEDNOHXA F0020, 21-24
DEAD, 25-48

2421.101 220'
01.1988
AE 400-24
PLGTD 15, 1901-2000
PLGTD 14, 1801-1900
PLGTD 1, 1126
DEAD, 202-250
PLGTD 1, 1251
DEAD, 244-400

2421.101 380'
MC#280484
AKF 400-24
PLGTD 6, 1-385
DEAD, 386-400

2421.201 960'
MC#R21443DS1
FOC 144 RIB ARM
MEDNOHXB 302, 1-26
MEDNOHXB F0020, 1-26
DEAD, 53-54
F0020, 29-32
DEAD, 59-62
F0020, 37-48
DEAD, 75-144

2421.101 130'
02.2018 100'
AKF 100-24
(PLGTD 1, 951-975)
(PLGTD 1, 1126-1150)
(DEAD, 51-100)
DEAD, 1-35
PLGTD 6, 386-390
DEAD, 41-50

2421.101 120'
MC#280483
AKF 300-24
PLGTD 6, 1-300

2421.101 120'
MC#280483
AKF 300-24
PLGTD 6, 1-300

2421.101 270'
MC#280484
AKF 400-24
PLGTD 6, 1-390
DEAD, 391-400

2421.101 380'
MC#280484
AKF 400-24
PLGTD 6, 1-385
DEAD, 386-400

2423.101 244'
01.2001 164'
AKF 200-24 REM 80'
(PLGTD 12, 1-75)
(PLGTD 1, 1-75)
(PLGTD 6, 251-300)
PLGTD 6, 376-385
DEAD, 11-200
(1900-13)
(35-4;2004)
(115+70 40 40LT)

2423.101 260'
MC#280480
AKF 100-24
PLGTD 6, 301-400

2421.201 550'
MC#R20483DS1
FOC 48 RIB ARM
DEAD, 1-20
MEDNOHXA F0020, 21-24
DEAD, 25-48

2421.101 220'
01.1988
AE 400-24
PLGTD 15, 1901-2000
PLGTD 14, 1801-1900
PLGTD 1, 1126
DEAD, 202-250
PLGTD 1, 1251
DEAD, 244-400

2421.101 380'
MC#280484
AKF 400-24
PLGTD 6, 1-385
DEAD, 386-400

2421.201 960'
MC#R21443DS1
FOC 144 RIB ARM
MEDNOHXB 302, 1-26
MEDNOHXB F0020, 1-26
DEAD, 53-54
F0020, 29-32
DEAD, 59-62
F0020, 37-48
DEAD, 75-144

2421.101 130'
02.2018 100'
AKF 100-24
(PLGTD 1, 951-975)
(PLGTD 1, 1126-1150)
(DEAD, 51-100)
DEAD, 1-35
PLGTD 6, 386-390
DEAD, 41-50

2421.101 120'
MC#280483
AKF 300-24
PLGTD 6, 1-300

2421.101 120'
MC#280483
AKF 300-24
PLGTD 6, 1-300

2421.101 270'
MC#280484
AKF 400-24
PLGTD 6, 1-390
DEAD, 391-400

2421.101 380'
MC#280484
AKF 400-24
PLGTD 6, 1-385
DEAD, 386-400

2423.101 244'
01.2001 164'
AKF 200-24 REM 80'
(PLGTD 12, 1-75)
(PLGTD 1, 1-75)
(PLGTD 6, 251-300)
PLGTD 6, 376-385
DEAD, 11-200
(1900-13)
(35-4;2004)
(115+70 40 40LT)

2423.101 260'
MC#280480
AKF 100-24
PLGTD 6, 301-400

2421.201 550'
MC#R20483DS1
FOC 48 RIB ARM
DEAD, 1-20
MEDNOHXA F0020, 21-24
DEAD, 25-48

2421.101 220'
01.1988
AE 400-24
PLGTD 15, 1901-2000
PLGTD 14, 1801-1900
PLGTD 1, 1126
DEAD, 202-250
PLGTD 1, 1251
DEAD, 244-400

2421.101 380'
MC#280484
AKF 400-24
PLGTD 6, 1-385
DEAD, 386-400

2421.201 960'
MC#R21443DS1
FOC 144 RIB ARM
MEDNOHXB 302, 1-26
MEDNOHXB F0020, 1-26
DEAD, 53-54
F0020, 29-32
DEAD, 59-62
F0020, 37-48
DEAD, 75-144

2421.101 130'
02.2018 100'
AKF 100-24
(PLGTD 1, 951-975)
(PLGTD 1, 1126-1150)
(DEAD, 51-100)
DEAD, 1-35
PLGTD 6, 386-390
DEAD, 41-50

2421.101 120'
MC#280483
AKF 300-24
PLGTD 6, 1-300

2421.101 120'
MC#280483
AKF 300-24
PLGTD 6, 1-300

2421.101 270'
MC#280484
AKF 400-24
PLGTD 6, 1-390
DEAD, 391-400

2421.101 380'
MC#280484
AKF 400-24
PLGTD 6, 1-385
DEAD, 386-400

2423.101 244'
01.2001 164'
AKF 200-24 REM 80'
(PLGTD 12, 1-75)
(PLGTD 1, 1-75)
(PLGTD 6, 251-300)
PLGTD 6, 376-385
DEAD, 11-200
(1900-13)
(35-4;2004)
(115+70 40 40LT)

2423.101 260'
MC#280480
AKF 100-24
PLGTD 6, 301-400

2421.201 550'
MC#R20483DS1
FOC 48 RIB ARM
DEAD, 1-20
MEDNOHXA F0020, 21-24
DEAD, 25-48

2421.101 220'
01.1988
AE 400-24
PLGTD 15, 1901-2000
PLGTD 14, 1801-1900
PLGTD 1, 1126
DEAD, 202-250
PLGTD 1, 1251
DEAD, 244-400

2421.101 380'
MC#280484
AKF 400-24
PLGTD 6, 1-385
DEAD, 386-400

2421.201 960'
MC#R21443DS1
FOC 144 RIB ARM
MEDNOHXB 302, 1-26
MEDNOHXB F0020, 1-26
DEAD, 53-54
F0020, 29-32
DEAD, 59-62
F0020, 37-48
DEAD, 75-144

2421.101 130'
02.2018 100'
AKF 100-24
(PLGTD 1, 951-975)
(PLGTD 1, 1126-1150)
(DEAD, 51-100)
DEAD, 1-35
PLGTD 6, 386-390
DEAD, 41-50

2421.101 120'
MC#280483
AKF 300-24
PLGTD 6, 1-300

2421.101 120'
MC#280483
AKF 300-24
PLGTD 6, 1-300

2421.101 270'
MC#280484
AKF 400-24
PLGTD 6, 1-390
DEAD, 391-400

2421.101 380'
MC#280484
AKF 400-24
PLGTD 6, 1-385
DEAD, 386-400

2423.101 244'
01.2001 164'
AKF 200-24 REM 80'
(PLGTD 12, 1-75)
(PLGTD 1, 1-75)
(PLGTD 6, 251-300)
PLGTD 6, 376-385
DEAD, 11-200
(1900-13)
(35-4;2004)
(115+70 40 40LT)

2423.101 260'
MC#280480
AKF 100-24
PLGTD 6, 301-400

2421.201 550'
MC#R20483DS1
FOC 48 RIB ARM
DEAD, 1-20
MEDNOHXA F0020, 21-24
DEAD, 25-48

2421.101 220'
01.1988
AE 400-24
PLGTD 15, 1901-2000
PLGTD 14, 1801-1900
PLGTD 1, 1126
DEAD, 202-250
PLGTD 1, 1251
DEAD, 244-400

2421.101 380'
MC#280484
AKF 400-24
PLGTD 6, 1-385
DEAD, 386-400

2421.201 960'
MC#R21443DS1
FOC 144 RIB ARM
MEDNOHXB 302, 1-26
MEDNOHXB F0020, 1-26
DEAD, 53-54
F0020, 29-32
DEAD, 59-62
F0020, 37-48
DEAD, 75-144

2421.101 130'
02.2018 100'
AKF 100-24
(PLGTD 1, 951-975)
(PLGTD 1, 1126-1150)
(DEAD, 51-100)
DEAD, 1-35
PLGTD 6, 386-390
DEAD, 41-50

2421.101 120'
MC#280483
AKF 300-24
PLGTD 6, 1-300

2421.101 120'
MC#280483
AKF 300-24
PLGTD 6, 1-300

2421.101 270'
MC#280484
AKF 400-24
PLGTD 6, 1-390
DEAD, 391-400

2421.101 380'
MC#280484
AKF 400-24
PLGTD 6, 1-385
DEAD, 386-400

2423.101 244'
01.2001 164'
AKF 200-24 REM 80'
(PLGTD 12, 1-75)
(PLGTD 1, 1-75)
(PLGTD 6, 251-300)
PLGTD 6, 376-385
DEAD, 11-200
(1900-13)
(35-4;2004)
(115+70 40 40LT)

2423.101 260'
MC#280480
AKF 100-24
PLGTD 6, 301-400

2421.201 550'
MC#R20483DS1
FOC 48 RIB ARM
DEAD, 1-20
MEDNOHXA F0020, 21-24
DEAD, 25-48

2421.101 220'
01.1988
AE 400-24
PLGTD 15, 1901-2000
PLGTD 14, 1801-1900
PLGTD 1, 1126
DEAD, 202-250
PLGTD 1, 1251
DEAD, 244-400

2421.101 380'
MC#280484
AKF 400-24
PLGTD 6, 1-385
DEAD, 386-400

2421.201 960'
MC#R21443DS1
FOC 144 RIB ARM
MEDNOHXB 302, 1-26
MEDNOHXB F0020, 1-26
DEAD, 53-54
F0020, 29-32
DEAD, 59-62
F0020, 37-48
DEAD, 75-144

2421.101 130'
02.2018 100'
AKF 100-24
(PLGTD 1, 951-975)
(PLGTD 1, 1126-1150)
(DEAD, 51-100)
DEAD, 1-35
PLGTD 6, 386-390
DEAD, 41-50

2421.101 120'
MC#280483
AKF 300-24
PLGTD 6, 1-300

2421.101 120'
MC#280483
AKF 300-24
PLGTD 6, 1-300

2421.101 270'
MC#280484
AKF 400-24
PLGTD 6, 1-390
DEAD, 391-400

2421.101 380'
MC#280484
AKF 400-24
PLGTD 6, 1-385
DEAD, 386-400

2423.101 244'
01.2001 164'
AKF 200-24 REM 80'
(PLGTD 12, 1-75)
(PLGTD 1, 1-75)
(PLGTD 6, 251-300)
PLGTD 6, 376-385
DEAD, 11-200
(1900-13)
(35-4;2004)
(115+70 40 40LT)

2423.101 260'
MC#280480
AKF 100-24
PLGTD 6, 301-400

2421.201 550'
MC#R20483DS1
FOC 48 RIB ARM
DEAD, 1-20
MEDNOHXA F0020, 21-24
DEAD, 25-48

2421.101 220'
01.1988
AE 400-24
PLGTD 15, 1901-2000
PLGTD 14, 1801-1900
PLGTD 1, 1126
DEAD, 202-250
PLGTD 1, 1251
DEAD, 244-400

2421.101 380'
MC#280484
AKF 400-24
PLGTD 6, 1-385
DEAD, 386-400

2421.201 960'
MC#R21443DS1
FOC 144 RIB ARM
MEDNOHXB 302, 1-26
MEDNOHXB F0020, 1-26
DEAD, 53-54
F0020, 29-32
DEAD, 59-62
F0020, 37-48
DEAD, 75-144

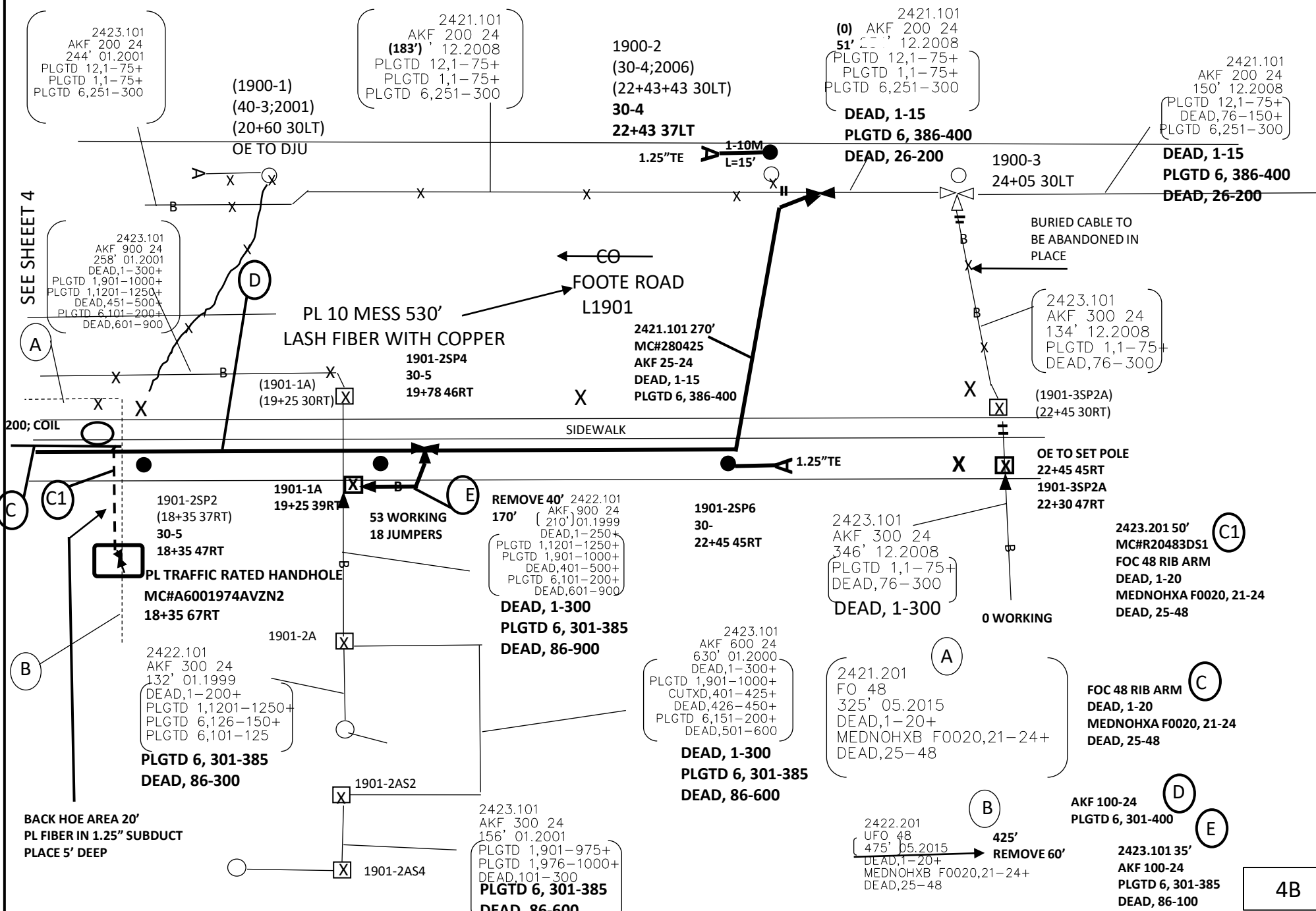
2421.101 130'
02.2018 100'
AKF 100-24
(PLGTD 1, 951-975)
(PLGTD 1, 1126-1150)
(DEAD, 51-100)
DEAD, 1-35
PLGTD 6, 386-390
DEAD, 41-50

2421.101 120'
MC#280483
AKF 300-24
PLGTD 6, 1-300

2421.101 120'
MC#280483
AKF 300-24
PLGTD 6, 1-300

2421.101 270'
MC#280484
AKF 400-24
PLGTD 6, 1-390
DEAD, 391-400

2421.101 380'
MC#280484
AKF 400-24
PLGTD 6, 1-385
DEAD, 386-400



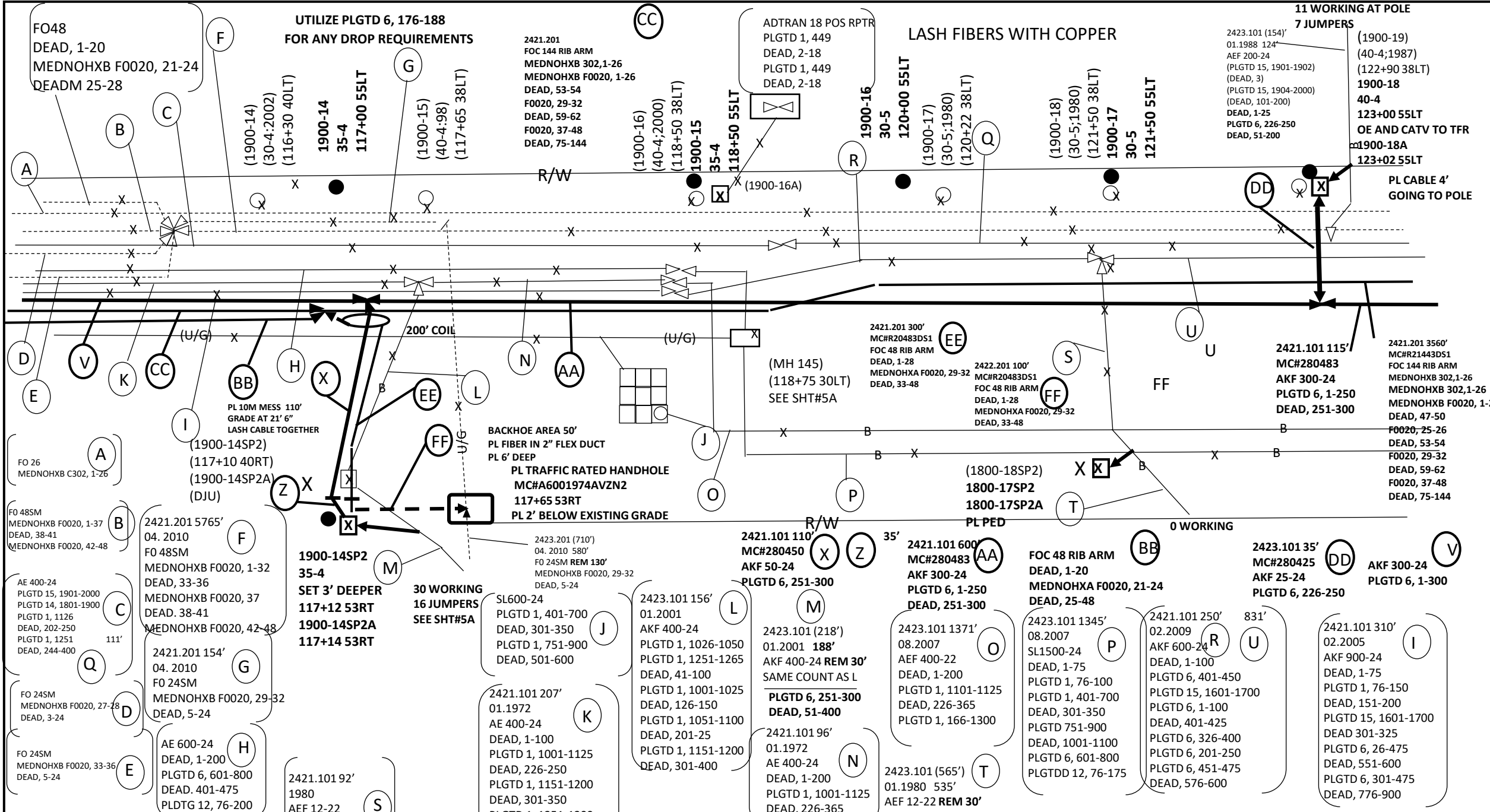
UNITS / ACCT CODES

P01A- PL POLE	4
P01B-REM POLE	1
P07A-PLA+G	1
P07B-REM A+G	1
P22D-PL AERIAL CABLE <1.5"	890'
P18A-PL STRAND	530'
P18B-REMOVE STRAND	187'
P22G-REMOVE AERIAL CABLE	187'
S10A-CLEAR AND CAP	415
S12A-PL RA CLOSURE	2
S02B-ST SPLICE 51-300	84
S24A-SECTION TRANSFER	59
S20A-RUN JUMPERS	24
P22K-PL/REM RISER	3
P61A-PL PED	3
F28-SPLICE RIBBON 1-11	4
F30-RIBBONIZE EXISTING FIBER	4
F26-PL FIBER CLOSURE	1
P61B-REM PED	2
P58D-PL HANDHOLE	1
P55A-BACKHOE CABLE	20
P55B-BACK ADDL 12"	40
P36B-REMOVE DROP	1



PROJECT NUMBER:	2463114	CO. AREA:	MEDIA
DRAWN DATE:		ENGR:	BRAD SWYDER
BY:		PHONE:	415-305-4246
SCALE:	1-100	TAX DISTRICT:	NA
TRANSF. METHOD:		DATE:	NA

4B



FO48
DEAD, 1-20
MEDNOHXB F0020, 21-24
DEADM 25-28

UTILIZE PLGTD 6, 176-188
FOR ANY DROP REQUIREMENTS

2421.201
FOC 144 RIB ARM
MEDNOHXB 302, 1-26
MEDNOHXB F0020, 1-26
DEAD, 53-54
F0020, 29-32
DEAD, 59-62
F0020, 37-48
DEAD, 75-144

ADTRAN 18 POS RPTR
PLGTD 1, 449
DEAD, 2-18
PLGTD 1, 449
DEAD, 2-18

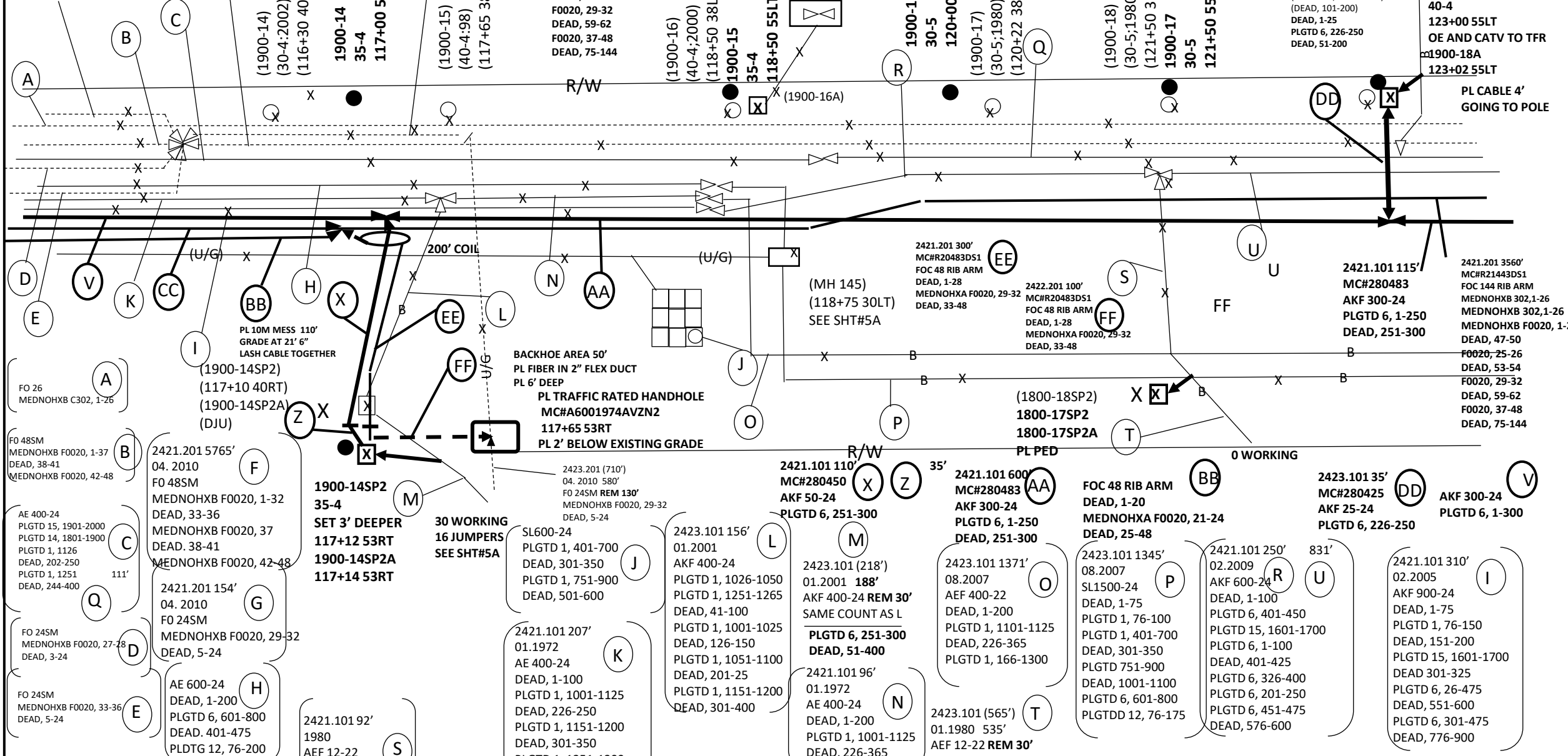
LASH FIBERS WITH COPPER

11 WORKING AT POLE
7 JUMPERS

2423.101 (154)
01.1988 124'
AEF 200-24
(PLGTD 15, 1901-1902)
(DEAD, 3)
(PLGTD 15, 1904-2000)
(DEAD, 101-200)
DEAD, 1-25
PLGTD 6, 226-250
DEAD, 51-200

(1900-19)
(40-4;1987)
(122+90 38LT)
1900-18
40-4
123+00 55LT
OE AND CATV TO TFR
1900-18A
123+02 55LT

PL CABLE 4'
GOING TO POLE



FO 26
MEDNOHXB C302, 1-26

PL 10M MESS 110'
GRADE AT 21' 6"
LASH CABLE TOGETHER

BACKHOE AREA 50'
PL FIBER IN 2" FLEX DUCT
PL 6' DEEP
PL TRAFFIC RATED HANDHOLE
MC#A6001974AVZN2
117+65 53RT
PL 2' BELOW EXISTING GRADE

(MH 145)
(118+75 30LT)
SEE SHT#5A

2421.101 115'
MC#280483
AKF 300-24
PLGTD 6, 1-250
DEAD, 251-300

2421.201 3560'
MC#R21443DS1
FOC 144 RIB ARM
MEDNOHXB 302, 1-26
MEDNOHXB F0020, 1-26
DEAD, 47-50
F0020, 25-26
DEAD, 53-54
F0020, 29-32
DEAD, 59-62
F0020, 37-48
DEAD, 75-144

FO 48SM
MEDNOHXB F0020, 1-37
DEAD, 38-41
MEDNOHXB F0020, 42-48

2421.201 5765'
04. 2010
FO 48SM
MEDNOHXB F0020, 1-32
DEAD, 33-36
MEDNOHXB F0020, 37
DEAD, 38-41
MEDNOHXB F0020, 42-48

1900-14SP2
35-4
SET 3' DEEPER
117+12 53RT
1900-14SP2A
117+14 53RT

30 WORKING
16 JUMPERS
SEE SHT#5A

SL600-24
PLGTD 1, 401-700
DEAD, 301-350
PLGTD 1, 751-900
DEAD, 501-600

2423.101 156'
01.2001
AKF 400-24
PLGTD 1, 1026-1050
PLGTD 1, 1251-1265
DEAD, 41-100
PLGTD 1, 1001-1025
DEAD, 126-150
PLGTD 1, 1051-1100
DEAD, 201-25
PLGTD 1, 1151-1200
DEAD, 301-400

2421.101 110'
MC#280450
AKF 50-24
PLGTD 6, 251-300

2423.101 (218')
01.2001 188'
AKF 400-24 REM 30'
SAME COUNT AS L
PLGTD 6, 251-300
DEAD, 51-400

2421.101 96'
01.1972
AE 400-24
DEAD, 1-200
PLGTD 1, 1001-1125
DEAD, 226-365
PLGTD 1, 1266-1300

2421.101 600'
MC#280483
AKF 300-24
PLGTD 6, 1-250
DEAD, 251-300

2423.101 1371'
08.2007
AEF 400-22
DEAD, 1-200
PLGTD 1, 1101-1125
DEAD, 226-365
PLGTD 1, 166-1300

2423.101 (565')
01.1980 535'
AEF 12-22 REM 30'
(PLGTD 1, 101-112)
DEAD, 1-12

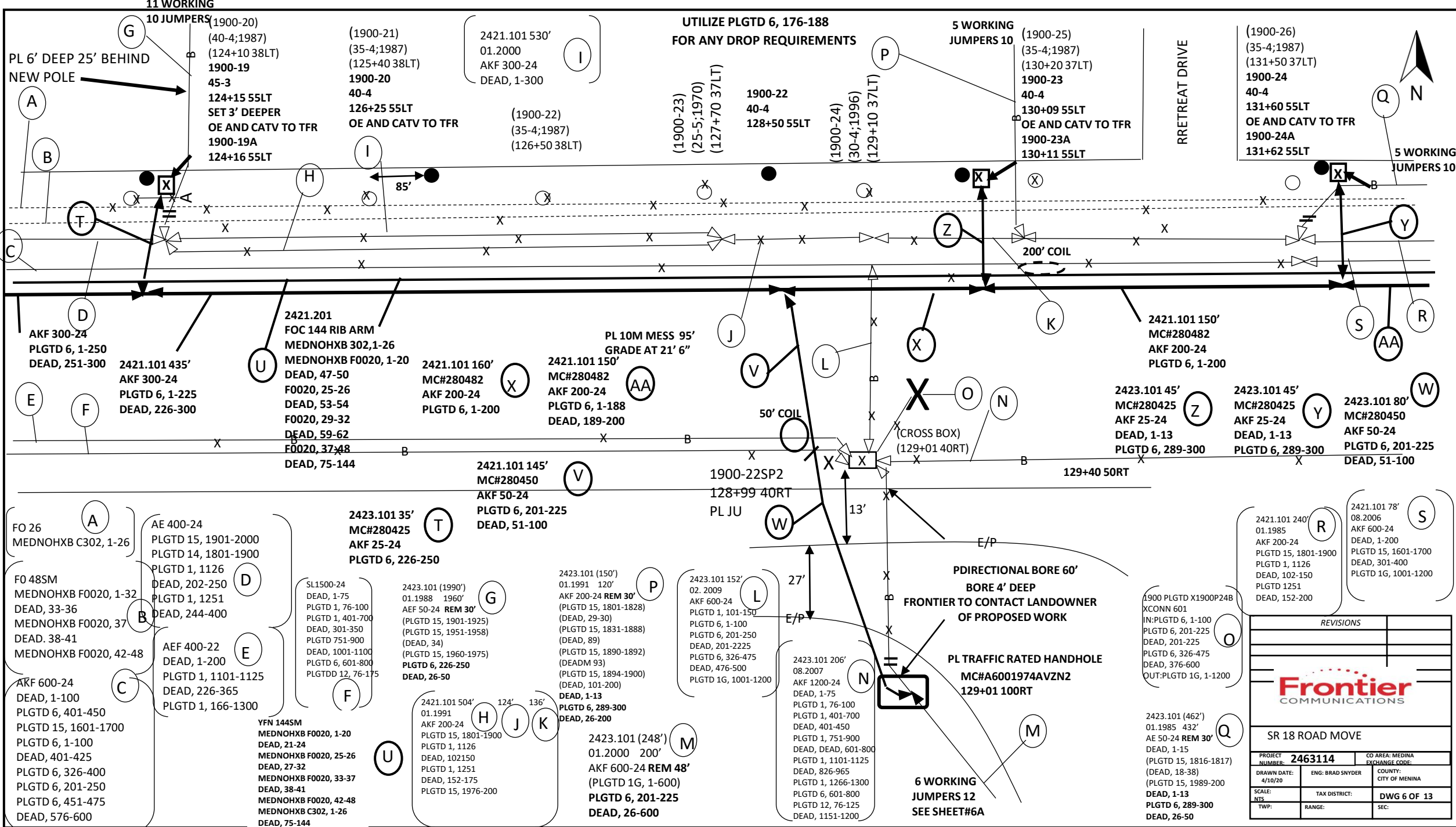
FOC 48 RIB ARM
DEAD, 1-20
MEDNOHXA F0020, 21-24
DEAD, 25-48

2423.101 1345'
08.2007
SL1500-24
DEAD, 1-75
PLGTD 1, 76-100
PLGTD 1, 401-700
DEAD, 301-350
PLGTD 751-900
DEAD, 1001-1100
PLGTD 6, 601-800
PLGTD 12, 76-175

2421.101 250'
02.2009
AKF 600-24
DEAD, 1-100
PLGTD 6, 401-450
PLGTD 15, 1601-1700
PLGTD 6, 1-100
DEAD, 401-425
PLGTD 6, 326-400
PLGTD 6, 201-250
PLGTD 6, 451-475
DEAD, 576-600

2423.101 35'
MC#280425
AKF 25-24
PLGTD 6, 226-250

2421.101 310'
02.2005
AKF 900-24
DEAD, 1-75
PLGTD 1, 76-150
DEAD, 151-200
PLGTD 15, 1601-1700
DEAD 301-325
PLGTD 6, 26-475
DEAD, 551-600
PLGTD 6, 301-475
DEAD, 776-900



11 WORKING JUMPERS (1900-20)
 (40-4;1987)
 (124+10 38LT)
1900-19
 45-3
 124+15 55LT
 SET 3' DEEPER
 OE AND CATV TO TFR
 1900-19A
 124+16 55LT

(1900-21)
 (35-4;1987)
 (125+40 38LT)
1900-20
 40-4
 126+25 55LT
 OE AND CATV TO TFR

UTILIZE PLGTD 6, 176-188 FOR ANY DROP REQUIREMENTS

5 WORKING JUMPERS 10 (1900-25)
 (35-4;1987)
 (130+20 37LT)
1900-23
 40-4
 130+09 55LT
 OE AND CATV TO TFR
 1900-23A
 130+11 55LT

(1900-26)
 (35-4;1987)
 (131+50 37LT)
1900-24
 40-4
 131+60 55LT
 OE AND CATV TO TFR
 1900-24A
 131+62 55LT

AKF 300-24
 PLGTD 6, 1-250
 DEAD, 251-300

2421.101 435'
 AKF 300-24
 PLGTD 6, 1-225
 DEAD, 226-300

2421.201
 FOC 144 RIB ARM
 MEDNOHXB 302,1-26
 MEDNOHXB F0020, 1-20
 DEAD, 47-50
 F0020, 25-26
 DEAD, 53-54
 F0020, 29-32
 DEAD, 59-62
 F0020, 37-48
 DEAD, 75-144

2421.101 160'
 MC#280482
 AKF 200-24
 PLGTD 6, 1-200

2421.101 150'
 MC#280482
 AKF 200-24
 PLGTD 6, 1-188
 DEAD, 189-200

2421.101 150'
 MC#280482
 AKF 200-24
 PLGTD 6, 1-200

2423.101 45'
 MC#280425
 AKF 25-24
 DEAD, 1-13
 PLGTD 6, 289-300

2423.101 45'
 MC#280425
 AKF 25-24
 DEAD, 1-13
 PLGTD 6, 289-300

2423.101 80'
 MC#280450
 AKF 50-24
 PLGTD 6, 201-225
 DEAD, 51-100

FO 26
 MEDNOHXB C302, 1-26

AE 400-24
 PLGTD 15, 1901-2000
 PLGTD 14, 1801-1900
 PLGTD 1, 1126
 DEAD, 202-250
 PLGTD 1, 1251
 DEAD, 244-400

2423.101 35'
 MC#280425
 AKF 25-24
 PLGTD 6, 226-250

2421.101 145'
 MC#280450
 AKF 50-24
 PLGTD 6, 201-225
 DEAD, 51-100

2423.101 (150')
 01.1991 120'
 AKF 200-24 REM 30'
 (PLGTD 15, 1801-1828)
 (DEAD, 29-30)
 (PLGTD 15, 1831-1888)
 (DEAD, 89)
 (PLGTD 15, 1890-1892)
 (DEADM 93)
 (PLGTD 15, 1894-1900)
 (DEAD, 101-200)
 DEAD, 1-13
 PLGTD 6, 289-300
 DEAD, 26-200

2423.101 152'
 02.2009
 AKF 600-24
 PLGTD 1, 101-150
 PLGTD 6, 1-100
 PLGTD 6, 201-250
 PLGTD 6, 326-475
 DEAD, 201-2225
 DEAD, 476-500
 PLGTD 1G, 1001-1200

2423.101 206'
 08.2007
 AKF 1200-24
 DEAD, 1-75
 PLGTD 1, 76-100
 PLGTD 1, 401-700
 PLGTD 1, 751-900
 DEAD, DEAD, 601-800
 PLGTD 1, 1101-1125
 DEAD, 826-965
 PLGTD 1, 1266-1300
 PLGTD 6, 601-800
 PLGTD 12, 76-125
 DEAD, 1151-1200

1900 PLGTD X1900P24B
 XC0NN 601
 IN:PLGTD 6, 1-100
 PLGTD 6, 201-225
 DEAD, 201-225
 PLGTD 6, 326-475
 DEAD, 376-600
 OUT:PLGTD 1G, 1-1200

2421.101 240'
 01.1985
 AKF 200-24
 PLGTD 15, 1801-1900
 PLGTD 1, 1126
 DEAD, 102-150
 PLGTD 1251
 DEAD, 152-200

2421.101 78'
 08.2006
 AKF 600-24
 DEAD, 1-200
 PLGTD 15, 1601-1700
 DEAD, 301-400
 PLGTD 1G, 1001-1200

AKF 600-24
 DEAD, 1-100
 PLGTD 6, 401-450
 PLGTD 15, 1601-1700
 PLGTD 6, 1-100
 DEAD, 401-425
 PLGTD 6, 326-400
 PLGTD 6, 201-250
 PLGTD 6, 451-475
 DEAD, 576-600

AEF 400-22
 DEAD, 1-200
 PLGTD 1, 1101-1125
 DEAD, 226-365
 PLGTD 1, 166-1300

YFN 1445M
 MEDNOHXB F0020, 1-20
 DEAD, 21-24
 MEDNOHXB F0020, 25-26
 DEAD, 27-32
 MEDNOHXB F0020, 33-37
 DEAD, 38-41
 MEDNOHXB F0020, 42-48
 MEDNOHXB C302, 1-26
 DEAD, 75-144

2421.101 504'
 01.1991
 AKF 200-24
 PLGTD 15, 1801-1900
 PLGTD 1, 1126
 DEAD, 102150
 PLGTD 1, 1251
 DEAD, 152-175
 PLGTD 15, 1976-200

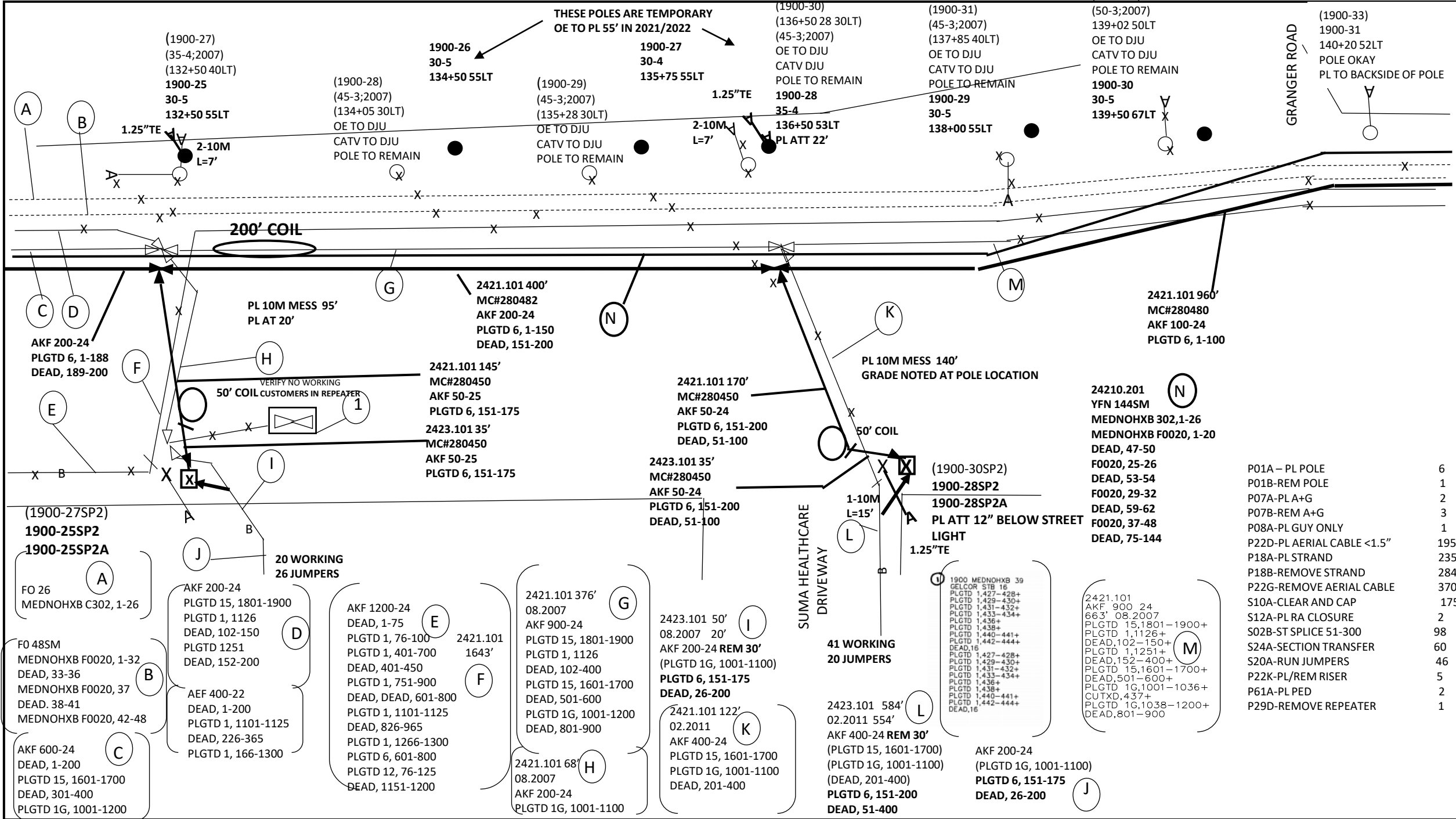
2423.101 (248')
 01.2000 200'
 AKF 600-24 REM 48'
 (PLGTD 1G, 1-600)
 PLGTD 6, 201-225
 DEAD, 26-600

2423.101 152'
 02.2009
 AKF 600-24
 PLGTD 1, 101-150
 PLGTD 6, 1-100
 PLGTD 6, 201-250
 PLGTD 6, 326-475
 DEAD, 201-2225
 DEAD, 476-500
 PLGTD 1G, 1001-1200

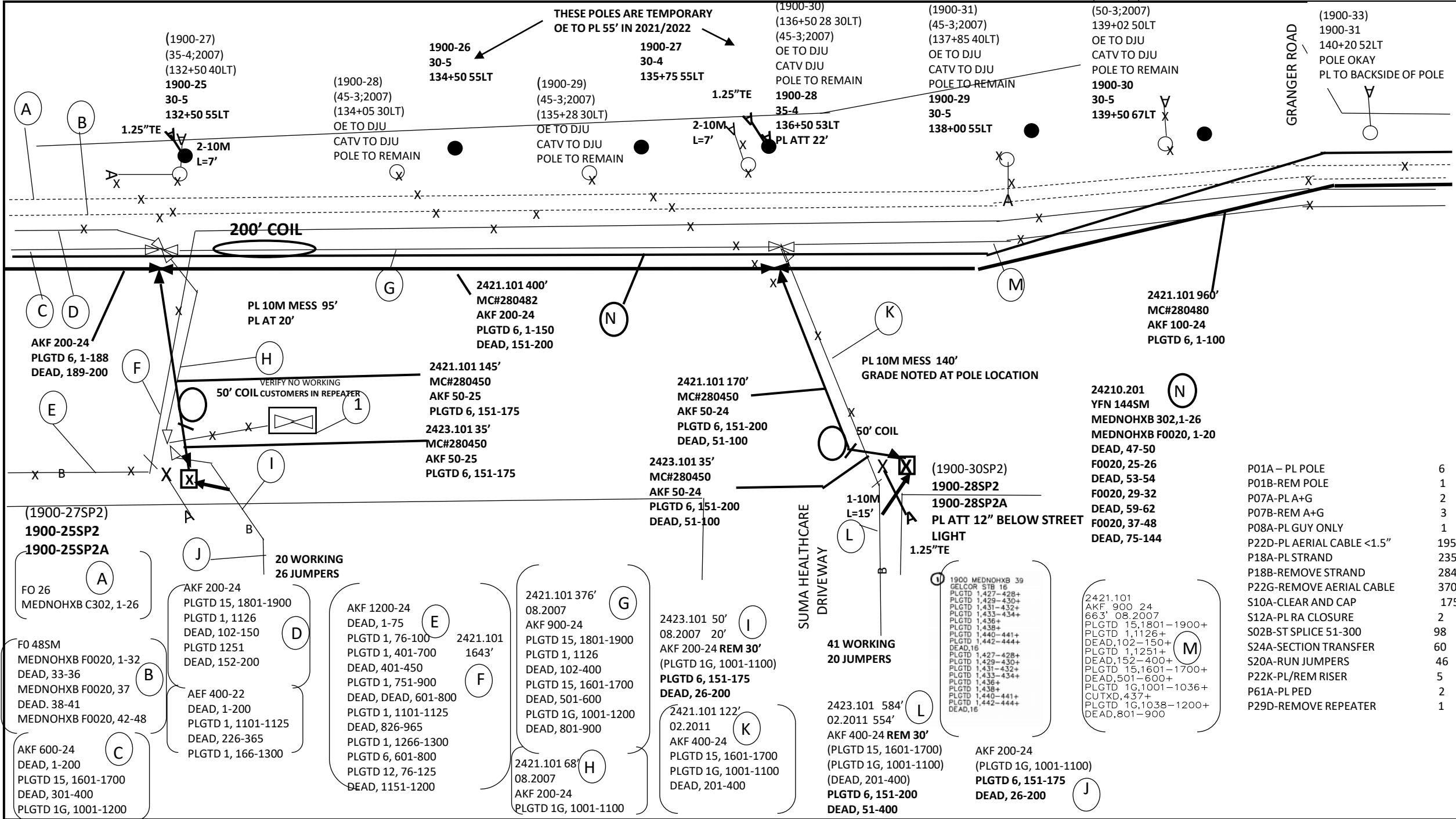
2423.101 206'
 08.2007
 AKF 1200-24
 DEAD, 1-75
 PLGTD 1, 76-100
 PLGTD 1, 401-700
 PLGTD 1, 751-900
 DEAD, DEAD, 601-800
 PLGTD 1, 1101-1125
 DEAD, 826-965
 PLGTD 1, 1266-1300
 PLGTD 6, 601-800
 PLGTD 12, 76-125
 DEAD, 1151-1200

2423.101 (462')
 01.1985 432'
 AE 50-24 REM 30'
 DEAD, 1-15
 (PLGTD 15, 1816-1817)
 (DEAD, 18-38)
 (PLGTD 15, 1989-200
 DEAD, 1-13
 PLGTD 6, 289-300
 DEAD, 26-50

REVISIONS		
Frontier COMMUNICATIONS		
SR 18 ROAD MOVE		
PROJECT NUMBER: 2463114	CO AREA: MEDINA EXCHANGE CODE:	
DRAWN DATE: 4/10/20	ENG: BRAD SNYDER	COUNTY: CITY OF MEDINA
SCALE: NIS	TAX DISTRICT:	DWG 6 OF 13
TWP:	RANGE:	SEC:



THESE POLES ARE TEMPORARY
OE TO PL 55' IN 2021/2022



P01A - PL POLE	6
P01B - REM POLE	1
P07A - PL A+G	2
P07B - REM A+G	3
P08A - PL GUY ONLY	1
P22D - PL AERIAL CABLE <1.5"	1955'
P18A - PL STRAND	235'
P18B - REMOVE STRAND	2842'
P22G - REMOVE AERIAL CABLE	3702'
S10A - CLEAR AND CAP	175'
S12A - PL RA CLOSURE	2
S02B - ST SPLICE 51-300	98
S24A - SECTION TRANSFER	60
S20A - RUN JUMPERS	46
P22K - PL/REM RISER	5
P61A - PL PED	2
P29D - REMOVE REPEATER	1

02.2008
 AKF 200-22
 (DEAD, 1-50)
 (PLGTD 1G, 1051-1100)
 (DEAD, 101-150)
 (PLGTD 1G, 1151-1200)
DEAD, 801-850
PLRIV 1D, 801-850
DEAD, 101-200

2421.201
 FOC 144 RIB ARM
 MEDNOHXB 302,1-26
 MEDNOHXB F0020, 1-20
 DEAD, 47-50
 F0020, 25-26
 DEAD, 53-54
 F0020, 29-32
 DEAD, 59-62
 F0020, 37-38
 DEAD, 65-68
 F0020, 43-48
 DEAD, 75-144

MATCH SHEET#9A

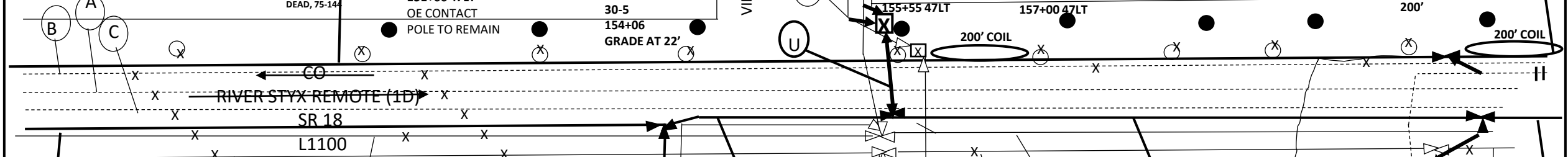
6B CROSS BOX
 24 WORKING
 48 JUMERS

(1900-42)	(1900-43)	(1900-44)
1900-38	(30-5;1995)	(45-3;1985)
(40-5;1981)	(152+98 32LT)	(154+10 32LT)
151+64 38LT	1900-39	POLE TO REMAIN
30-5	30-5	OE AND CATV CONTACT
151+66 47LT	152+98 47'LT	1900-40
OE CONTACT	30-5	30-5
POLE TO REMAIN	154+06	155+55 47LT
	GRADE AT 22'	157+00 47LT

(1900-45) PLRIV 1D, 601-900
 (45-3;1986) 54 WORKING
 (155+55 37LT) 48 JUMERS (1900-46)
 POLE TO REMAIN (45-3;1997)
 OE AND CATV CONTACT (156+92 37LT)
1900-41 POLE TO REMAIN
30-5 OE CONTACT
 155+55 47LT
1900-41A 30-5
 155+55 47LT

THESE POLES ARE TEMPORARY
 OE TO PL 55' IN 2021/2022
 (1900-47)
 (30-5;1989)
 (158+20 34LT)
 REMOVE POLE
1900-43
30-5
 158+53 47LT

(1900-48)
 (30-5;1989)
 (159+50 30LT)
1900-44
30-5
 160+05 47LT
 UNLASH AND RELASH
 200'



AKF 50-24
 PLGTD 6, 1-50
 24231.201 (472')
 10.2016 372'
 BFO48
 DEAD, 1-27 REM 100'
 (MEDNOHXB F0020, 23-24)??
 (DEAD, 25-48)
WRITE IN COUNT:
23-23 WAS SUPPOSEDLEY
DROPPED OFF AT 90600-999

2421.101 126'
 02.2008
 AKF 200-22
 DEAD, 1-50
 PLGTD 1G, 1051-1100
 DEAD, 101-150
 PLGTD 1G, 1151-1200

PL 10M MESS 100'
 GRADE AT EACH POLE
 2421.101 150'
 MC#280425
 AKF 25-24
 PLRIV 1D, 851-875

2421.101 140'
 MC#280480
 AKF 100-24
 PLGTD 6, 1-50
 DEAD, 51-75
 PLRIV 1D, 851-875

2421.201 1350'
 MC#R21443DS1
 MEDNOHXB 302,1-26
 MEDNOHXB F0020, 1-20
 DEAD, 47-50
 F0020, 25-26
 DEAD, 53-54
 F0020, 29-32
 DEAD, 59-62
 F0020, 37-38
 DEAD, 65-68
 F0020, 43-48
 DEAD, 75-144

2421.101 610'
 MC#280482
 AKF 200-24
 PLRIV 1D, 701-800
 DEAD, 101-150
 PLRIV 1D, 851-875
 DEAD, 176-200
 2421.101 155'
 MC#280450
 AKF 50-24
 PLRIV 1D, 801-850

2423.101 35'
 MC#280450
 AKF 50-24
 PLRIV 1D, 801-850
 (1900-49SP2)
1900-45SP2
 (1900-49SP2A)
1900-45SP2A
 50' COIL
 2423.101 35'
 MC#280450
 AKF 50-24
 PLRIV 1D, 801-850

FO 26
 MEDNOHXB C302, 1-26
 2423.101
 SL 1500 24
 530' 08.2007
 CUTXD,1-100+
 CUTXD,1-75+
 PLGTD 1,76-100+
 PLGTD 1,401-700+
 CUTXD,401-800+
 DEAD,901-950+
 PLGTD 1,751-900+
 CUTXD,1001-1100+
 PLGTD 6,601-800+
 DEAD,1451-1500+
 PLGTD 12,76-125

SL1500-24
 DEAD, 1-175
 PLGTD 1, 76-100
 PLGTD 4, 401-700
 DEAD, 501-1420
 PLGTD 1, 821-850
 DEAD, 1453-1500

(1900-44SP2)
1900-40SP2
 TFR (1) ATT
 GRADE 12" BELOW CATV
 50' COIL

2421.101 557'
 02.2008
 AKF 400-24
 DEAD, 1-250
 PLGTD 1G, 1151-1200
 PLGTD 1G, 1001-1100
 2421.101 1018'
 01.1997
 AKF 300-24
 PLRIV 1D, 601-900

(1900-45SP2)
 (DJU)
 2423.101 40'
 MC#280482
 AKF 200-24
 PLGTD 6, 1-50
 DEAD, 51-100
 PLRIV 1D, 701-800

(1900-48SP2)
 DJU
 2422.101 793'
 08.2007
 SL1500-24
 DEAD, 1-175
 PLGTD 1, 76-100
 PLGTD 4, 401-700
 DEAD, 501-1420
 PLGTD 1, 821-850
 DEAD, 1453-1500

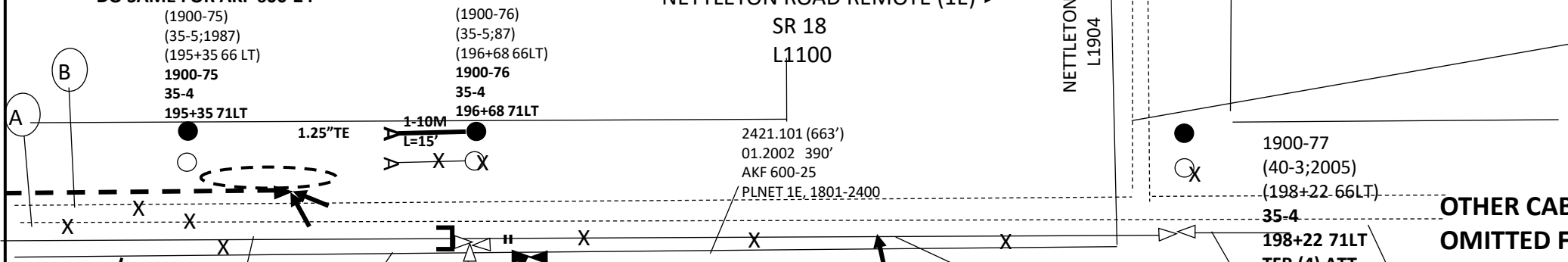
2423.101
 AEF 600 24
 425' 09.2908
 PLGTD 6,601-800+
 CUTXD,201-250+
 PLGTD 1,851-900+
 PLGTD 12,76-122+
 PLGTD 1,1251+
 DEAD,327-350+
 DEAD,351-375+
 CUTXD,398+
 PLGTD 12,124-125+
 CUTXD,401-425+
 PLGTD 15,1876-1900+
 CUTXD,451-500+
 PLGTD 1,1101-1125+
 DEAD,526-527+
 CUTXD,528+
 DEAD,529-545+
 PLGTD 1,821-825+
 PLGTD 1,751-800

**DELASH FIBER CABLES AND AKF 600-24
FROM POLE 1900-72 TO 1904-1 (800'X2)
PL 1 10M MESS FOR FIBER FROM 1900-72 TO 1900-77.
DO SAME FOR AKF 600-24**

← CO →
RIVER STYX REMOTE (1D)
NETTLETON ROAD REMOTE (1E) →

NETTLETON ROAD
L1904

2421.201 (2808')
01.1999 724'
YFD12
MEDNOHXB 302, 17-20
DEAD, 5-8
MEDNOHXB F0020, 19-20
DEAD, 11-12



**OTHER CABLES
OMITTED FOR CLARITY**

2421.201 FOC 72 RIB ARM
MEDNOHXB 302,1-22
DEAD, 23-26
MEDNOHXB F0020, 1-20
DEAD, 47-50
F0020, 25-26
DEAD, 53-54
F0020, 29-32
DEAD, 59-62
F0020, 37-38
DEAD, 65-72

2421.101 (0)
01.2002 253''
AKF 600-25
(PLNET 1E, 1801-2400)
PLNET 1E, 1801-2390
DEAD, 591-600

2421.101 20'
MC#280425
AKF 25-24
DEAD, 1-15
PLNET 1E, 2391-2400

2421.101
AKF 400 24
80' 01.1992
CUTXD,1-40+
CUTXD,41-50+
PLRIV 1D,26-50+
PLRIV 1D,151-200+
CUTXD,1-75+
PLGTD 1,76-100+
DEAD,226-375+
PLGTD 1,1276-1300
DEAD, 1-400

2421.101
STUB 400 24
25' 01.1995
CUTXD,1-50+
PLRIV 1D,26-50+
PLRIV 1D,151-200+
CUTXD,1-75+
PLGTD 1,76-100+
DEAD,226-375+
PLGTD 1,1276-1300

2421.201 (4384')
01.2001 2300'
FO24
MEDNOHXB 302, 1-16
MEDNOHXB F0020, 1-8

2421.101 80'
01.1997
AEF 25-24
DEAD, 1-15
(DEAD, PLRIV 1D, 441-450)
PLNET 1E, 2391-2400

REMOVE CABLE FROM MESSENGER 130'
LEAVE MESSENGER FOR GUYING

FO24
MEDNOHXB 302, 1-16
MEDNOHXB F0020, 1-8

YFD12
MEDNOHXB 302, 17-20
DEAD, 5-8
MEDNOHXB F0020, 19-20
DEAD, 11-12

2421.101
AKF 400 24
627' 01.1992
CUTXD,1-40+
PLRIV 1D,441-450-
PLRIV 1D,26-50+
PLRIV 1D,151-200+
CUTXD,1-75+
PLGTD 1,76-100+
DEAD,226-375+
PLGTD 1,1276-1300

NO CONTACT X

1900-76SP2
195+35 66 LT

5 WORKING
10 JUMPERS

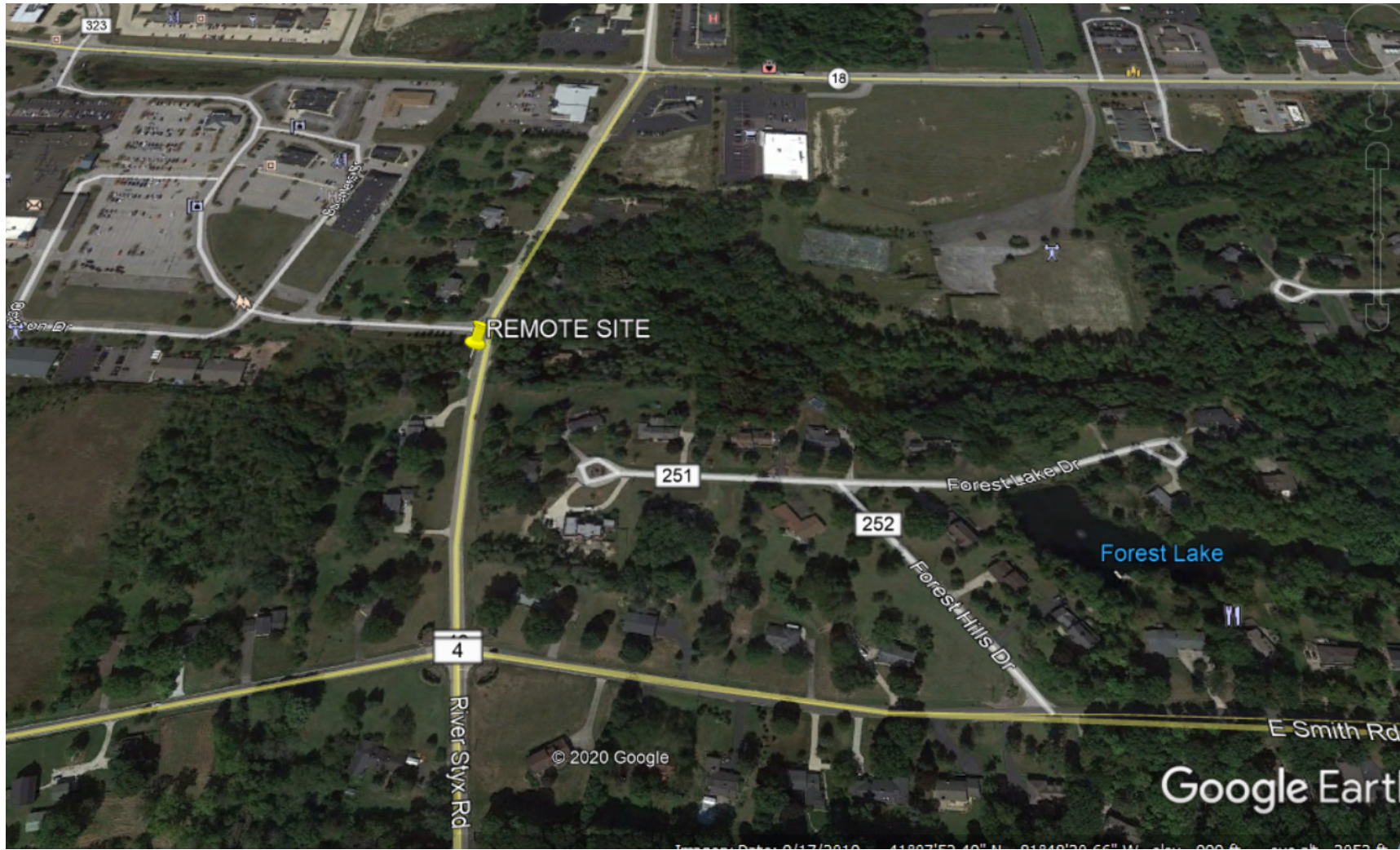
AEF 25-24
DEAD, 1-15
(DEAD, PLRIV 1D, 441-450)
PLNET 1E, 2391-2400

Frontier COMMUNICATIONS

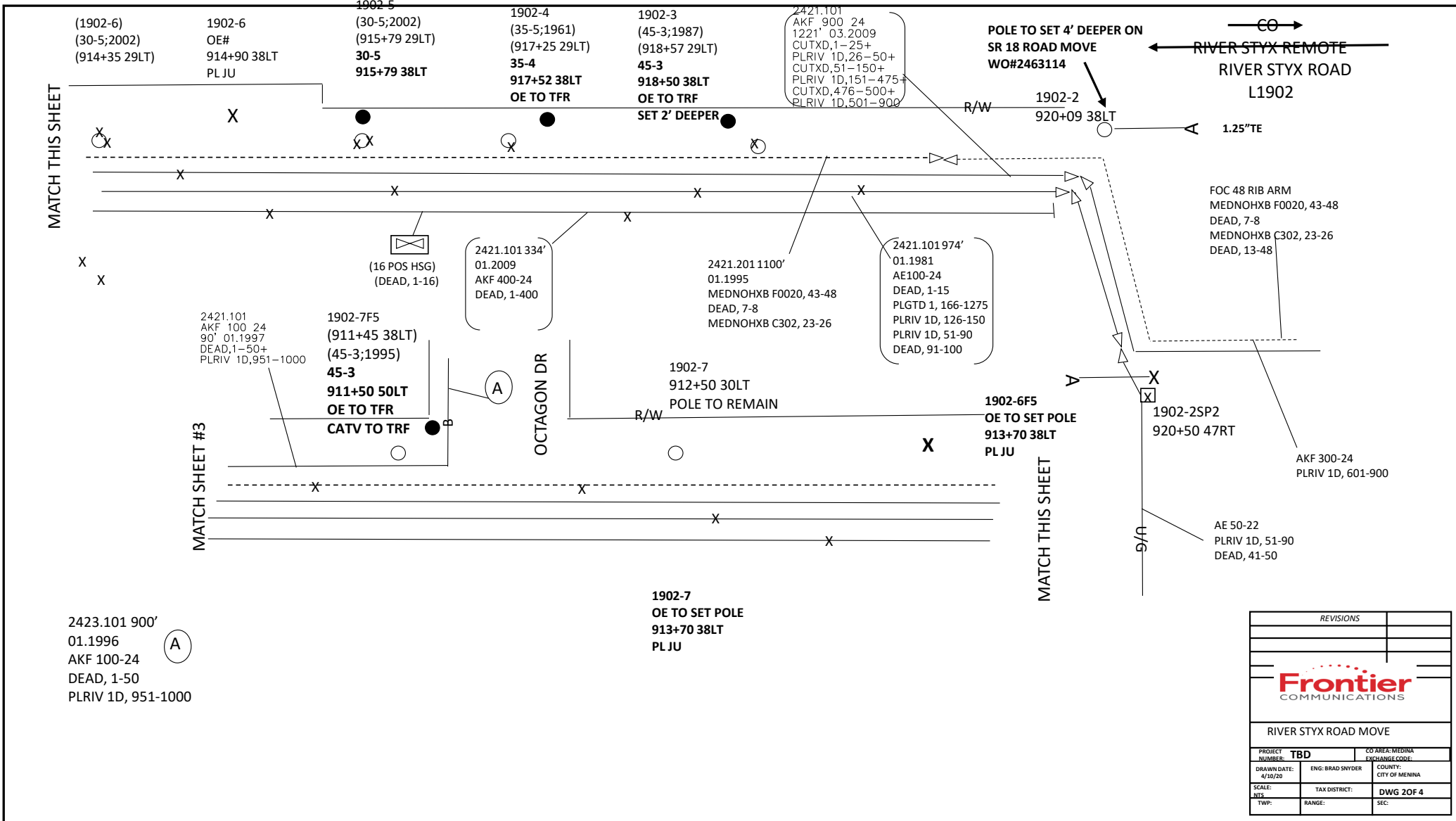
SR 18 ROAD MOVE

PROJECT NUMBER: 2463114	CO AREA: MEDINA
DRAWN DATE: 4/10/20	ENGINEER: BRAD SNYDER
SCALE: NTS	TAX DISTRICT: DWG 13 OF 13
TWP:	RANGE:
	SEC:

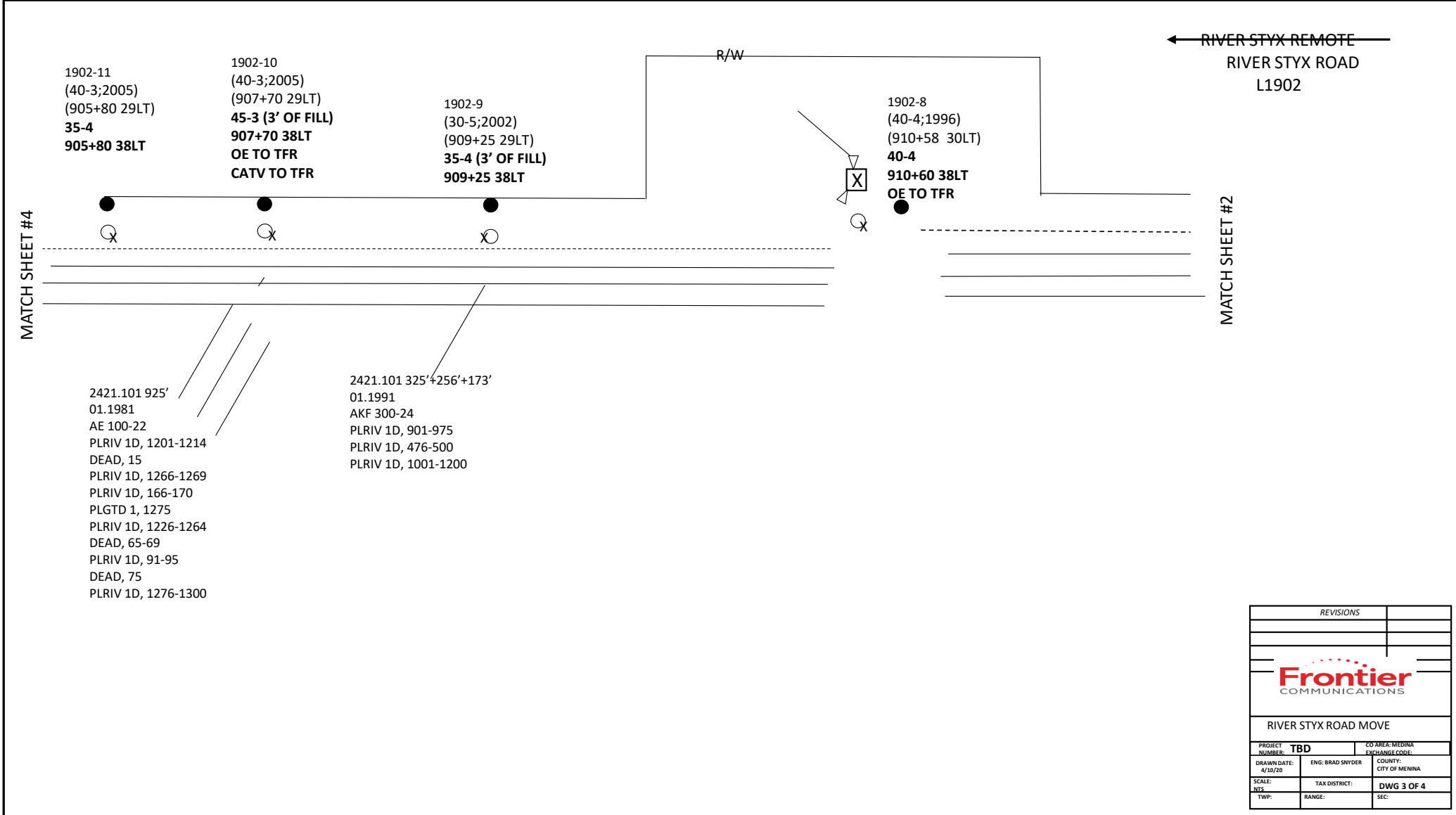
- 2411 Pole
- 2421 Aerial Copper Cable
- 2423 Direct Buried Telephone Cable
- 2422 Underground Telephone Cable inside a conduit



REVISIONS	
Frontier COMMUNICATIONS	
RIVER STYX ROAD MOVE	
PROJECT NUMBER: TBD	CO AREA: MENA EXCHANGE CODE:
DRAWN DATE: 4/10/20	ENG: BRAD SNYDER COUNTY: CITY OF MENA
SCALE:	TAX DISTRICT: DWG 1 OF 4
TWP:	RANGE: SEC:



REVISIONS		
Frontier COMMUNICATIONS		
RIVER STYX ROAD MOVE		
PROJECT NUMBER: TBD	CO AREA: MEDINA EXCHANGE CODE:	
DRAWN DATE: 4/10/20	ENG: BRAD SNYDER	COUNTY: CITY OF MEDINA
SCALE: N/A	TAX DISTRICT:	DWG 2OF 4
TWP:	RANGE:	SEC:



REVISIONS		
RIVER STYX ROAD MOVE		
PROJECT NUMBER:	TBD	CO AREA: MEDINA EXCHANGE CODE:
DRAWN DATE:	4/30/20	ENG: BRAD SNYDER COUNTY: CITY OF MENINA
SCALE:	TAX DISTRICT:	DWG 3 OF 4
TWP:	RANGE:	SEC:

2421.101 740' (A)
01.1992
AKF 200-22
PLRIV 1D, 1301-1500

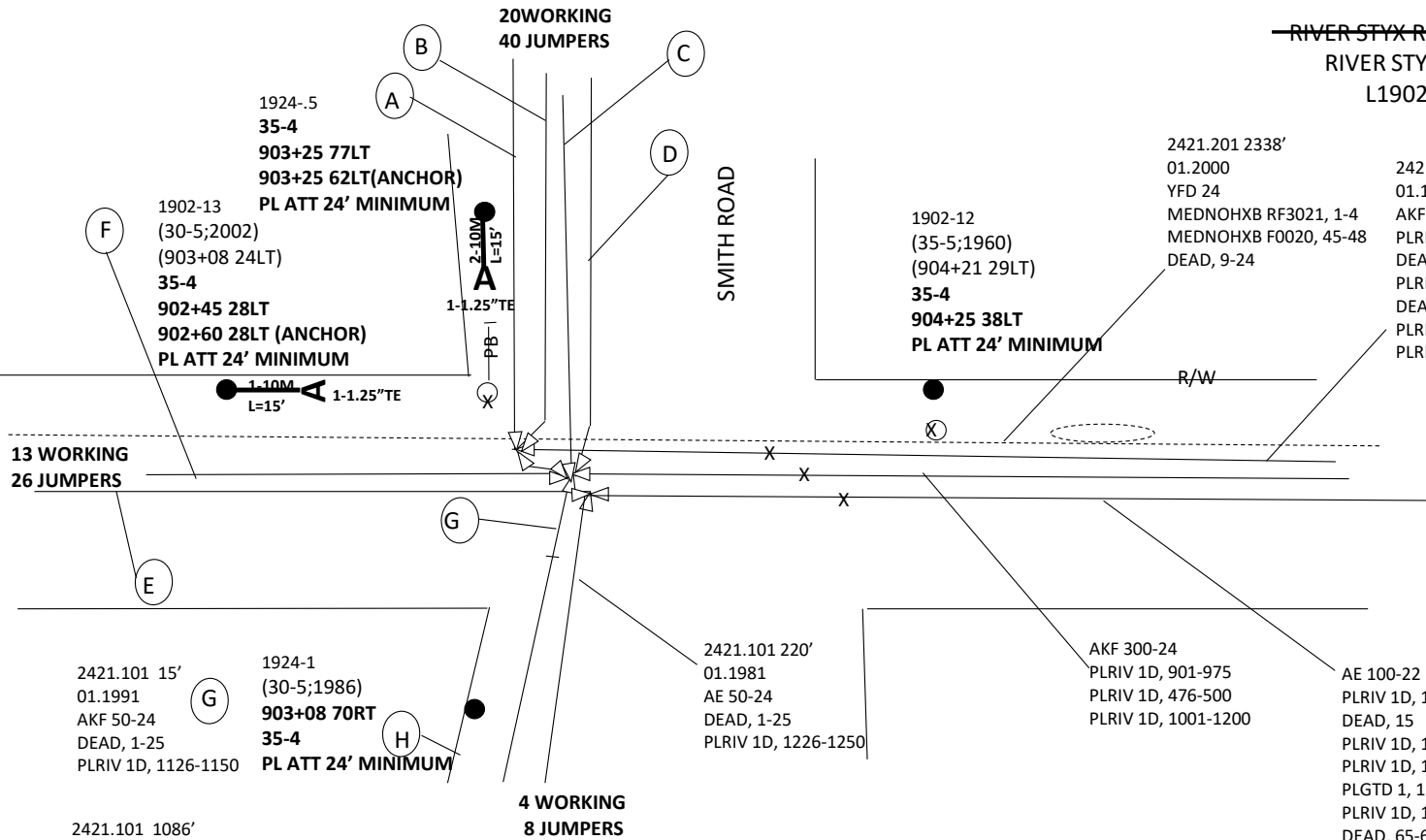
2421.101 766' (B)
01.2000
AKF 100-22
PLRIV 1D, 901-950
PLRIV 1D, 1-25
PLRIV 1D, 101-125

2421.101 764' (C)
01.2004
AKF 100-22
PLRIV 1D, DEAD, 1-50
PLRIV 1D, 951-975
DEAD, 76-100

2421.101 592' (D)
01.1973
AE 25-22
PLRIV 1D, 1151-1175

2421.101 (E)
AE 100 24
1179' 01.1979
PLRIV 1D, 1201-1214+
DEAD, 15+
PLGTD 1, 1266-1269+
PLRIV 1D, 166-170+
PLGTD 1, 1275+
PLRIV 1D, 1251-1264+
DEAD, 65+
CUTXD, 241-244+
PLRIV 1D, 91-95+
CUTXD, 250+
PLRIV 1D, 1276-1300+
PLRIV 1D, 1176-1200

(F) 2421.101
AE 200 24
1366' 01.1986
DEAD, 1-50+
PLRIV 1D, 1101-1125+
PLRIV 1D, 476-500+
PLRIV 1D, 1001-1100



MATCH SHEET #3

REVISIONS		
Frontier COMMUNICATIONS		
RIVER STYX ROAD MOVE		
PROJECT NUMBER: TBD	CO AREA: MENINA EXCHANGE CODE:	
DRAWN DATE: 4/30/20	ENG: BRAD SNYDER	COUNTY: CITY OF MENINA
SCALE: N/A	TAX DISTRICT:	DWG 4 OF 4
TWP:	RANGE:	SEC: