

O:\2019\2019055\WED\107578\Design\Roadway\Sheets\107578_GG001.dwg 14-Jan-22 1:23 PM

SHEET NUMBER								PARTICIPATION		ITEM	ITEM EXT.	GRAND TOTAL	UNIT	DESCRIPTION	SEE SHEET NO.
67	68	69	70	71	81	02/SAF /PV	03/SAF /OT								
													LIGHTING		
								16	625	00450	16	EACH	CONNECTION, FUSED PULL APART		
								8	625	00460	8	EACH	CONNECTION, UNFUSED PULL APART		
								8	625	10491	8	EACH	LIGHT POLE, CONVENTIONAL, AS PER PLAN, AT15B25	80	
								8	625	14000	8	EACH	LIGHT POLE FOUNDATION, 24" X 6' DEEP		
								8	625	18201	8	EACH	BRACKET ARM, 15', AS PER PLAN	80	
								5597	625	23302	5597	FT	NO. 6 AWG 2400 VOLT DISTRIBUTION CABLE		
								960	625	23400	960	FT	NO. 10 AWG POLE AND BRACKET CABLE		
								559	625	25400	559	FT	CONDUIT, 2", 725.04		
								627	625	25500	627	FT	CONDUIT, 3", 725.04		
								1186	625	29000	1186	FT	TRENCH		
								5	625	30700	5	EACH	PULL BOX, 725.08, 18"		
								5	625	30706	5	EACH	PULL BOX, 725.08, 24"		
								1	625	30720	1	EACH	PULL BOX, 725.08, 36"		
								10	625	32000	10	EACH	GROUND ROD		
								1	625	34001	1	EACH	POWER SERVICE, AS PER PLAN	80	
								1186	625	36010	1186	FT	UNDERGROUND WARNING/MARKING TAPE		
								5	625	98000	5	EACH	LIGHTING, MISC.: LANDSCAPING OUTLET	80	
								61	632	69900	61	FT	SERVICE CABLE, 3 CONDUCTOR, NO. 4 AWG		
													LIGHTING ALTERNATES		
								8	625	26253	8	EACH	LUMINAIRE, CONVENTIONAL, SOLID STATE (LED), AS PER PLAN, IES-III-M, 15,000-17,000 LUMENS (ALTERNATE 1)	80	
								8	625	26253	8	EACH	LUMINAIRE, CONVENTIONAL, SOLID STATE (LED), AS PER PLAN, IES-III-M, 15,000-17,000 LUMENS (ALTERNATE 2)	80	
													TRAFFIC CONTROL		
	183							183	621	00100	183	EACH	RPM		
	36							36	621	54000	36	EACH	RAISED PAVEMENT MARKER REMOVED		
				245.4	131.2			376.6	630	02100	376.6	FT	GROUND MOUNTED SUPPORT, NO. 2 POST		
				114.4	186.5			300.9	630	03100	300.9	EACH	GROUND MOUNTED SUPPORT, NO. 3 POST		
				9	3			12	630	08600	12	EACH	SIGN POST REFLECTOR		
				156.0	164.8			320.8	630	80100	320.8	SF	SIGNS, FLAT SHEET		
				8	9			17	630	84900	17	EACH	REMOVAL OF GROUND MOUNTED SIGN AND DISPOSAL		
				1	2			3	630	85100	3	EACH	REMOVAL OF GROUND MOUNTED SIGN AND REERECTION		
				6	10			16	630	86002	16	EACH	REMOVAL OF GROUND MOUNTED POST SUPPORT AND DISPOSAL		
				2				2	630	87400	2	EACH	REMOVAL OF OVERHEAD MOUNTED SIGN AND DISPOSAL		
				3	3			6	630	87500	6	EACH	REMOVAL OF POLE MOUNTED SIGN AND DISPOSAL		
				1	1			2	630	89812	2	EACH	REMOVAL OF WOODEN POLE AND DISPOSAL		
	1							1	632	90101	1	EACH	REMOVAL OF TRAFFIC SIGNAL INSTALLATION, AS PER PLAN	67	
		0.88	1.26					2.14	644	00104	2.14	MILE	EDGE LINE, 6"		
		0.27	0.62					0.89	644	00300	0.89	MILE	CENTER LINE		
		100	310					410	644	00700	410	FT	TRANSVERSE/DIAGONAL LINE		
		260						260	644	01520	260	FT	DOTTED LINE, 12"		
		77						77	644	20800	77	FT	YIELD LINE		
	1.49							1.49	644	30030	1.49	MILE	REMOVAL OF PAVEMENT MARKING		
		44	42					86	644	50300	86	FT	PAVEMENT MARKING, MISC.: ISLAND CURB REFLECTOR	67	
													MAINTENANCE OF TRAFFIC		
								LS	614	12420	LS		DETOUR SIGNING		
													INCIDENTALS		
								LS	614	11000	LS		MAINTAINING TRAFFIC		
								6	619	16010	6	MNTH	FIELD OFFICE, TYPE B		
								LS	LS	623	LS		CONSTRUCTION LAYOUT STAKES AND SURVEYING		
								LS	LS	624	LS		MOBILIZATION		

DESCRIPTION	DATE	INITIALS	REV. NO.
GENERAL SUMMARY UPDATES	12/10/21	DSM	1
UPDATE FOUNDABOUT RPM	1/14/22	DLS	3

CALCULATED	DSM	CHECKED	JJS
GENERAL SUMMARY			
MED - 57 - 1.48			
25			
88			

O:\2019\2019055\MED\107578\Design\Traffic\Sheets\107578_TN001.dwg, 18-Jan-22, 10:20 AM

TRAFFIC CONTROL LEGEND	
	PROPOSED SIGN
	EXISTING SIGN TO REMAIN
	EXISTING SIGN TO BE REERECTED
	EXISTING SIGN TO BE REMOVED
	SIGN SUPPORT
	RPM (RAISED PAVEMENT MARKER)
	EXISTING SIGN TO BE REMOVED
	PROPOSED SIGN
	CENTER LINE, DOUBLE SOLID
	DOTTED LINE, WHITE, 12" (2' LONG, 2' GAP)
	EDGE LINE, WHITE, 6"
	EDGE LINE, YELLOW, 6"
	ISLAND CURB REFLECTOR
	TRANSVERSE/DIAGONAL LINE, YELLOW
	YIELD LINE

ITEM 644 - PAVEMENT MARKING, MISC.: ISLAND CURB REFLECTOR

THE CONTRACTOR SHALL INSTALL THE ISLAND CURB REFLECTOR TO PERFORM THE FUNCTION OF CURB DELINEATION AS DETAILED IN THE PLANS. THE SEPARATOR CURB ASSEMBLY SHALL BE MANUFACTURED BY PEXCO OR APPROVED EQUAL. THE ASSEMBLY SYSTEM SHALL CARRY FROM THE MANUFACTURER A MINIMUM TWO (2) YEAR 100% ROAD HAZARD WARRANTY FOR THE ISLAND CURB REFLECTOR AND A 100% 2 YEAR WARRANTY FOR WORKMANSHIP AND MATERIAL WARRANTIES FOR ALL MATERIALS.

THE ISLAND CURB REFLECTOR SHALL BE INSTALLED ALONG THE TOP OF CURB FROM PC TO PT OF THE ISLAND NOSE AND EXTEND 2' BEYOND THE PC AND PT AS A TANGENT SECTION. THE BLACK POLYURETHANE BASE SHALL BE INSTALLED ON THE ISLAND BASED ON THE MANUFACTURER'S DIRECTIONS. THE REFLECTIVE STRIPING ATTACHED TO THE BASE SHALL BE YELLOW IN COLOR.

ALL QUANTITIES ARE FOR ESTIMATION PURPOSES ONLY. THE CONTRACTOR SHALL BE RESPONSIBLE FOR FINAL MEASUREMENTS, QUANTITIES AND INSTALLATION. THE INSTALLATION, ALL MISCELLANEOUS ACCESSORIES AND ATTACHMENTS SHALL BE CONSIDERED INCIDENTAL.

ITEM 632 - REMOVAL OF TRAFFIC SIGNAL INSTALLATION, AS PER PLAN

TRAFFIC SIGNAL INSTALLATIONS, INCLUDING SIGNAL HEADS, CABLE, MESSENGER WIRE, STRAIN POLES, CABINET, CONTROLLER, ETC., SHALL BE REMOVED IN ACCORDANCE WITH C&MS 632.26. REMOVED ITEMS SHALL BE STORED ON THE PROJECT FOR SALVAGE BY THE CITY OF WADSWORTH. THE CONTRACTOR SHALL CONTACT JOHN WILLIAMS, CITY OF WADSWORTH SUBSTATION, TRAFFIC SIGNAL & ELECTRIC MAINTENANCE DEPARTMENT, AT (330) 335-2819 TO ARRANGE A MUTUALLY AGREEABLE TIME TO DELIVER THE SIGNAL MATERIALS. SALVAGED MATERIALS DELIVERED TO THE CITY OF WADSWORTH SHALL BE DELIVERED AT NO ADDITIONAL COST TO THE PROJECT.

ITEMS TO BE REUSED:
NONE

ITEMS TO BE STORED:
VIDEO DETECTION CAMERAS - 2
GROUND MOUNTED CONTROLLER & CABINET WITH ALL COMPONENTS INSIDE - 1
CCTV CAMERAS - 2
SIGNAL HEADS
2-WAY - 2
4-WAY - 1
LUMINAIRE - 1
STRAIN POLES - 2
VIDEO/RADAR DETECTION UNITS - 2

IN THE EVENT THE ITEMS STORED ON THE PROJECT FOR SALVAGE BY THE LOCAL AGENCY ARE NOT REMOVED, THE CONTRACTOR SHALL, WHEN DIRECTED BY THE ENGINEER IN WRITING, REMOVE AND DISPOSE OF THE ITEMS AT NO ADDITIONAL COST TO THE PROJECT. ITEMS NOT SPECIFIED FOR STORAGE SHALL BE DISPOSED OF BY THE CONTRACTOR.

ITEM 644 - REMOVAL OF PAVEMENT MARKING

THE CONTRACTOR SHALL REMOVE THE EXISTING CONFLICTING PAVEMENT MARKINGS PER CONSTRUCTION AND MATERIALS SPECIFICATION SECTION 614.IIG. THE FOLLOWING LIMITS SHALL BE USED WHEN REMOVING THE EXISTING CONFLICTING PAVEMENT MARKINGS ON S.R. 57 (WADSWORTH ROAD) AND SEVILLE ROAD (C.R. 16):

S.R. 57 (WADSWORTH ROAD)

EDGE LINE, 6"
• STA. 1362+58 TO STA. 1370+58 (LT. & RT.) 1600 FT
• STA. 1384+60 TO STA. 1392+00 (LT. & RT.) 1480 FT

CENTER LINE
• STA. 1362+58 TO STA. 1370+58 (CEN.) 800 FT
• STA. 1384+60 TO STA. 1392+00 (CEN.) 740 FT

SEVILLE ROAD (C.R. 16)

EDGE LINE, 6"
• STA. 10+58 TO STA. 15+97 (LT. & RT.) 1078 FT
• STA. 24+35 TO STA. 29+60 (LT. & RT.) 1050 FT

CENTER LINE
• STA. 10+58 TO STA. 15+97 (CEN.) 539 FT
• STA. 24+35 TO STA. 29+60 (CEN.) 525 FT

THE FOLLOWING QUANTITIES HAVE BEEN CARRIED TO THE GENERAL SUMMARY:

ITEM 644 - REMOVAL OF PAVEMENT MARKING 1.49 MILE

ITEM 621 - RAISED PAVEMENT MARKER SUBSUMMARY

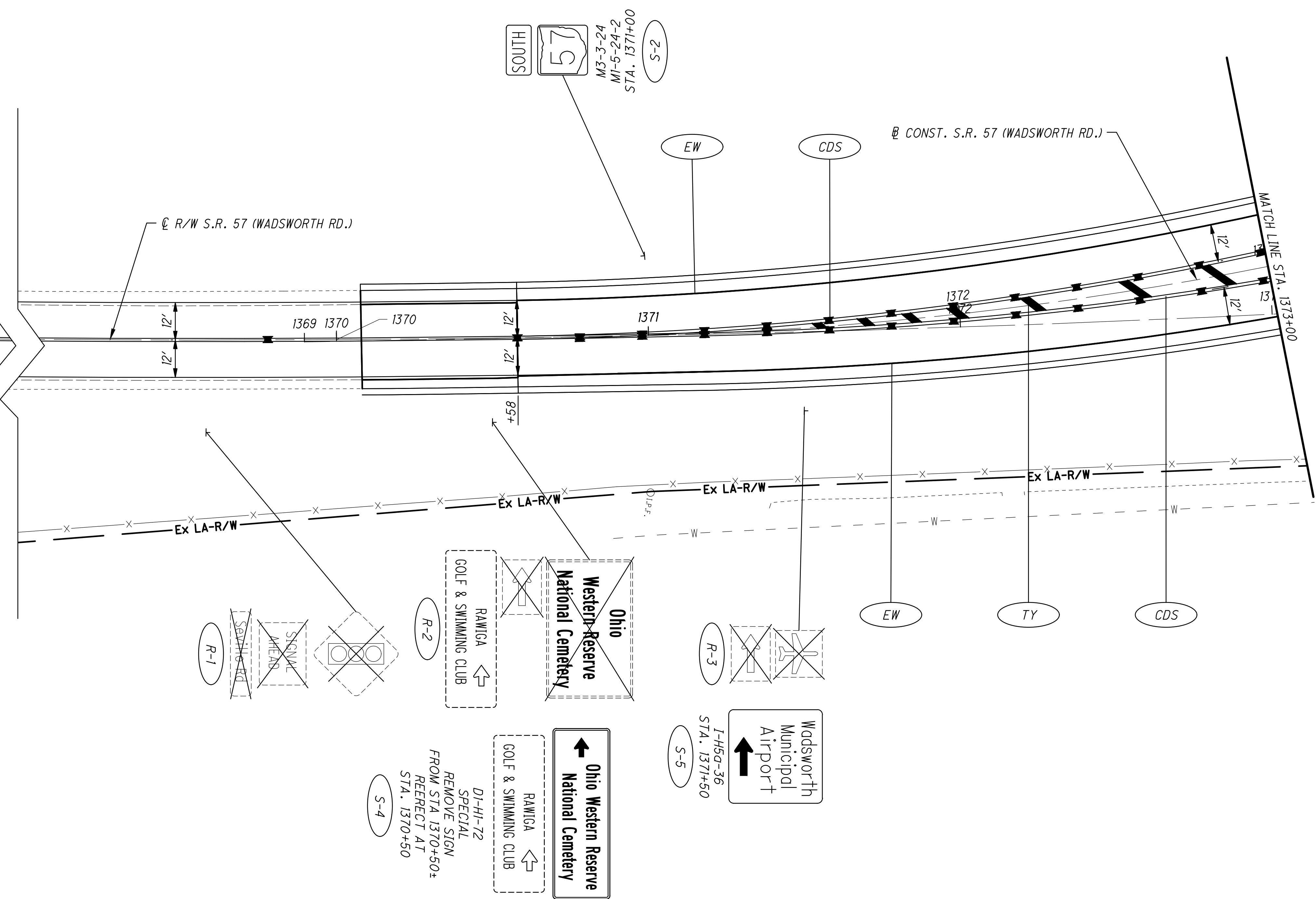
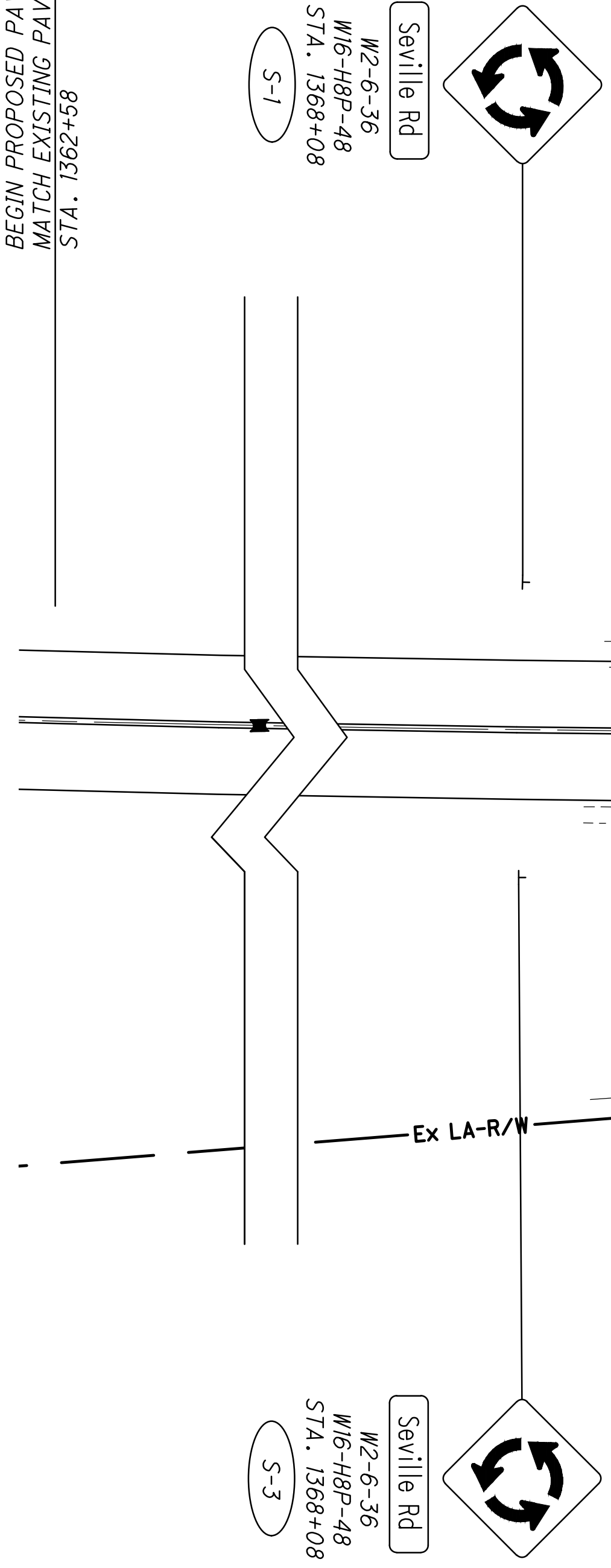
ROADWAY	SHEET NO.	STATION TO STATION	SIDE	INTERVAL	2-WAY YEL/YEL	2-WAY WHITE/RED	RAISED PAVEMENT MARKER REMOVED
SR 57	72	1362+58 1373+00	CEN/LT	80/20	22		36
SR 57	72	1370+58 1373+00	CEN/RT	20	12		
SR 57	73	1373+00 1373+62	LT	20/40	9		
SR 57	73	1373+00 1373+62	RT	20/40	9		
SR 57	74	1376+00 1376+75	LT	40	2	1	
SR 57	74	1376+00 1376+74	RT	40	1	1	
SR 57	74	1378+23 1379+00	LT	40	1	1	
SR 57	74	1378+23 1379+00	RT	40	2	1	
SEVILLE RD	74	18+25 18+85	LT	40	2	1	
SEVILLE RD	74	18+25 18+84	RT	40	1	1	
SEVILLE RD	74	20+36 21+00	LT	40	2	1	
SEVILLE RD	74	20+36 21+00	RT	40	2	1	
SR 57	76	1379+00 1382+00	LT	40	8		
SR 57	76	1379+00 1384+00	RT	40	8		
SR 57	77	1382+00 1392+00	LT	20/80	20		
SR 57	77	1382+00 1384+05	RT/LT	20	10		
SEVILLE RD	78	10+58 17+75	CEN/LT	80/20/40	16		
SEVILLE RD	78	16+08 17+75	RT	20/40	9		
SEVILLE RD	79	21+45 29+60	LT/RT	40/20/80	23		
SEVILLE RD	79	21+45 24+50	RT	40/20	16		
TOTALS					175	8	36
TOTALS CARRIED TO GENERAL SUMMARY					183		36

REV. NO.	DATE	DESCRIPTION
3	1/14/22	UPDATE ROUNDABOUT RPM
INITIALS		
DLS		
CALCULATED		
DLS		
CHECKED		
AKF		

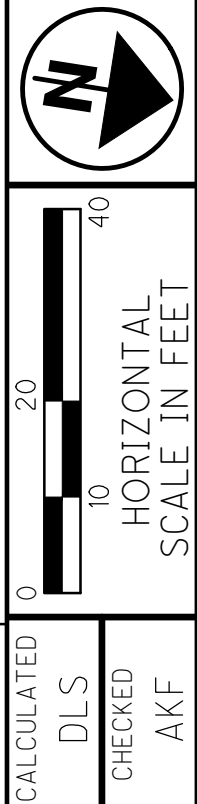
TRAFFIC CONTROL NOTES & DETAILS

MED - 57 - 1.48

BEGIN PROPOSED PAVEMENT MARKINGS
MATCH EXISTING PAVEMENT MARKINGS
STA. 1362+58



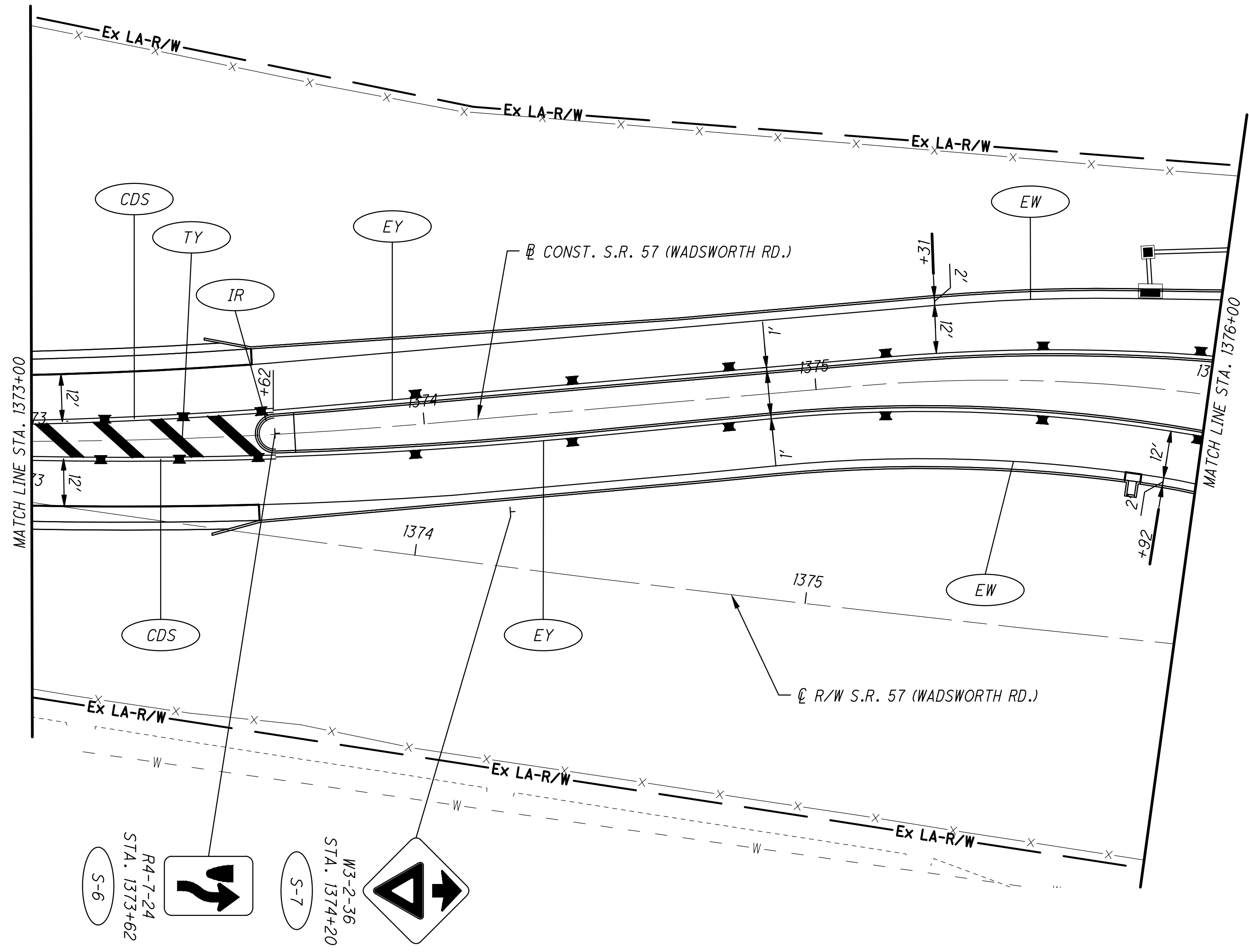
REV. NO.	INITIALS	DATE	DESCRIPTION
3	DLS	1/14/22	UPDATE ROUNDABOUT RPM



**TRAFFIC CONTROL PLAN - S.R. 57 (WADSWORTH RD.)
BEGIN TO STA. 1373+00**

MED-57-1.48

FOR TRAFFIC CONTROL LEGEND, SEE SHEET 67.



REV. NO.	INITIALS	DATE	DESCRIPTION
3	DLS	1/14/22	UPDATE ROUNDABOUT RPM

CALCULATED
DLS

CHECKED
AKF

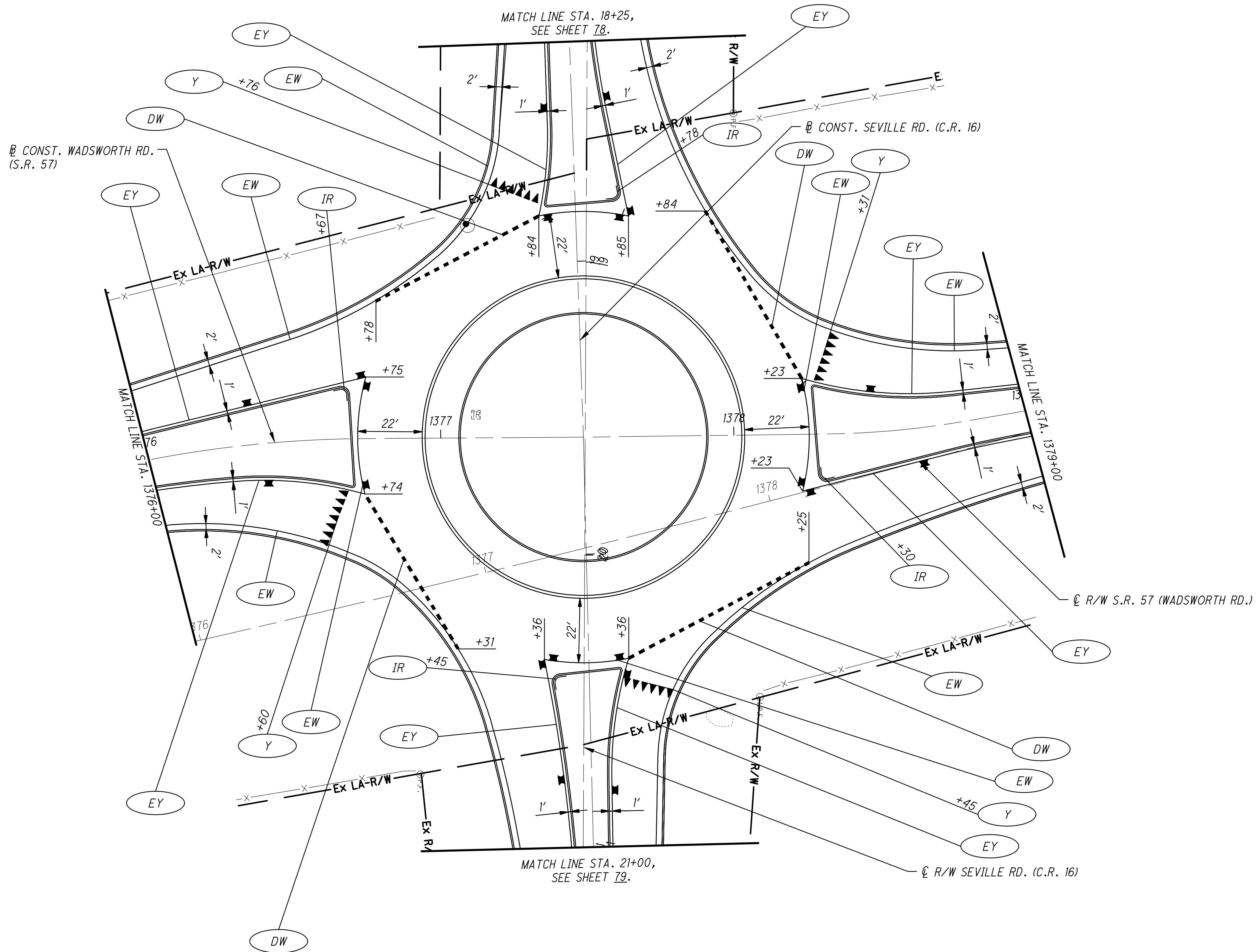
0 20 40
HORIZONTAL
SCALE IN FEET

**TRAFFIC CONTROL PLAN - S.R. 57 (WADSWORTH RD.)
STA. 1373+00 TO STA. 1376+00**

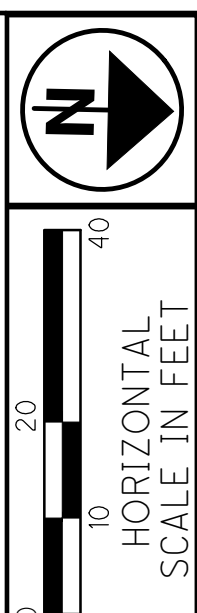
MED-57-1.48

73
88

O:\2019\2019055\MED\107578\Design\Traffic\Sheets\107578_IP006.dwg, 14-Jan-22, 1:37 PM



REV. NO.	INITIALS	DATE	DESCRIPTION
3	DLS	1/14/22	UPDATE ROUNDABOUT RPM

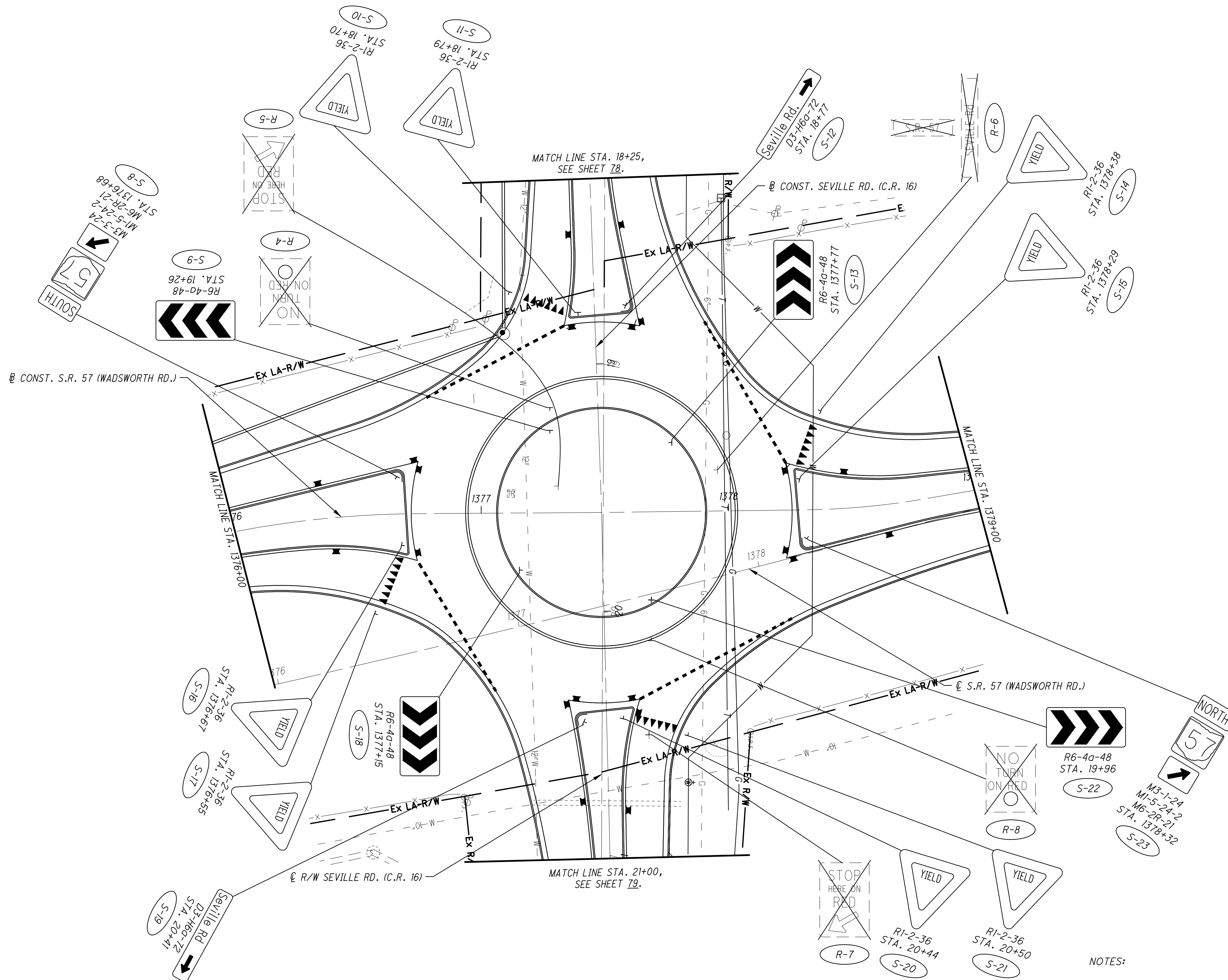


**PAVEMENT MARKING PLAN - S.R. 57 (WADSWORTH RD.)
STA. 1376+00 TO STA. 1379+00**

MED-57-1.48

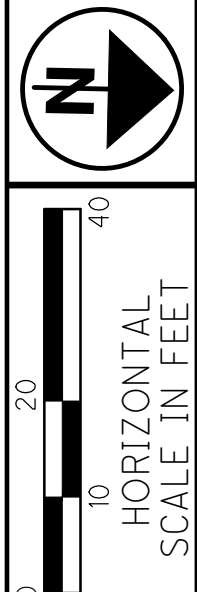
74
88

NOTES:
1. FOR SIGNING PLAN SEE SHEET 75.
2. FOR TRAFFIC CONTROL LEGEND SEE SHEET 67.

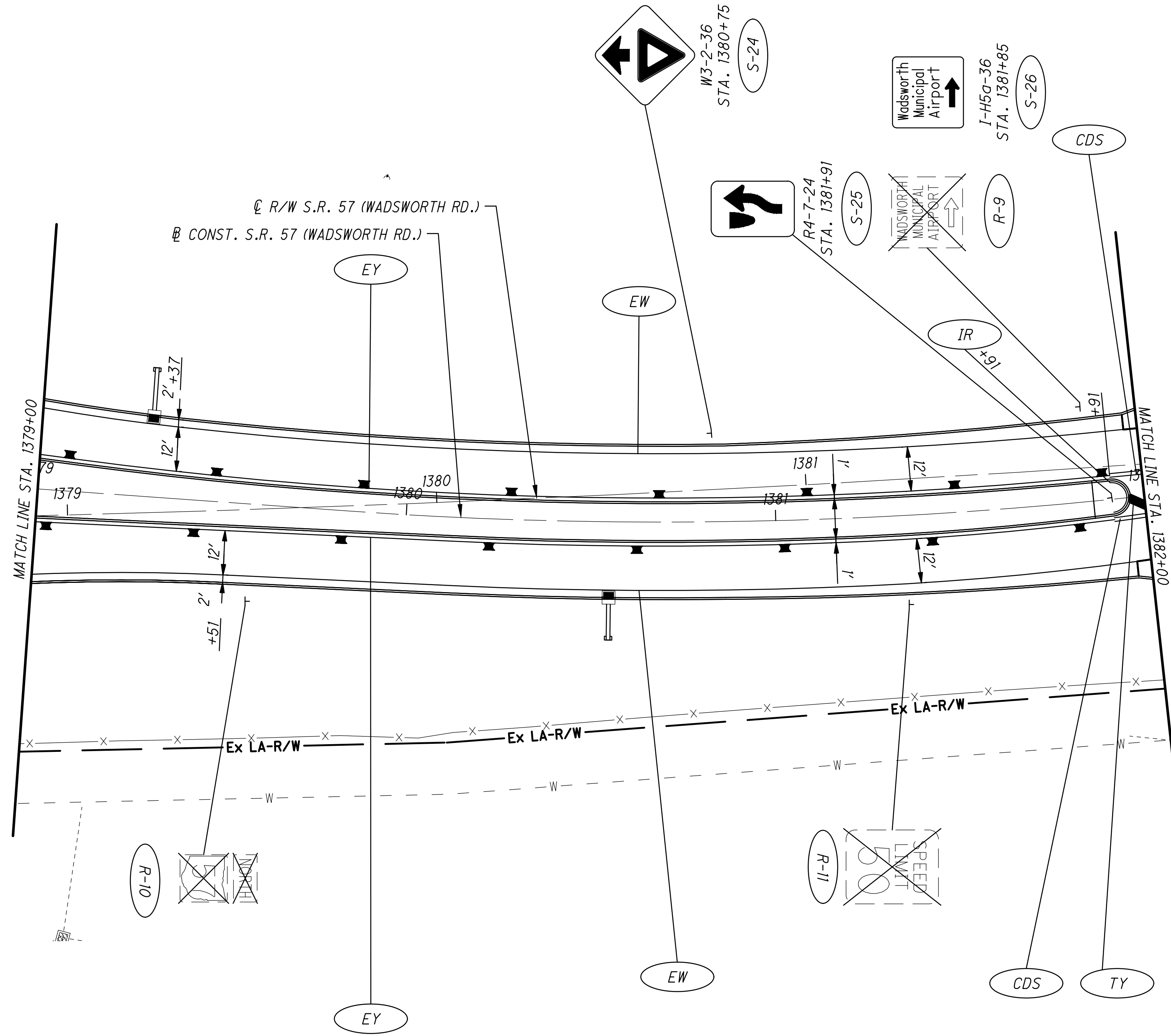


- NOTES:
1. FOR PAVEMENT MARKING PLAN, SEE SHEET 74.
 2. FOR TRAFFIC CONTROL LEGEND, SEE SHEET 67.

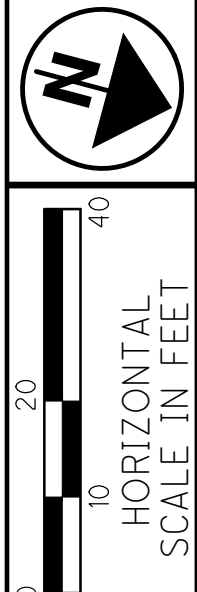
REV. NO.	INITIALS	DATE	DESCRIPTION
3	DLS	1/14/22	UPDATE ROUNDABOUT RPM



**SIGNING PLAN - S.R. 57 (WADSWORTH RD.)
STA. 1376+00 TO STA. 1379+00**



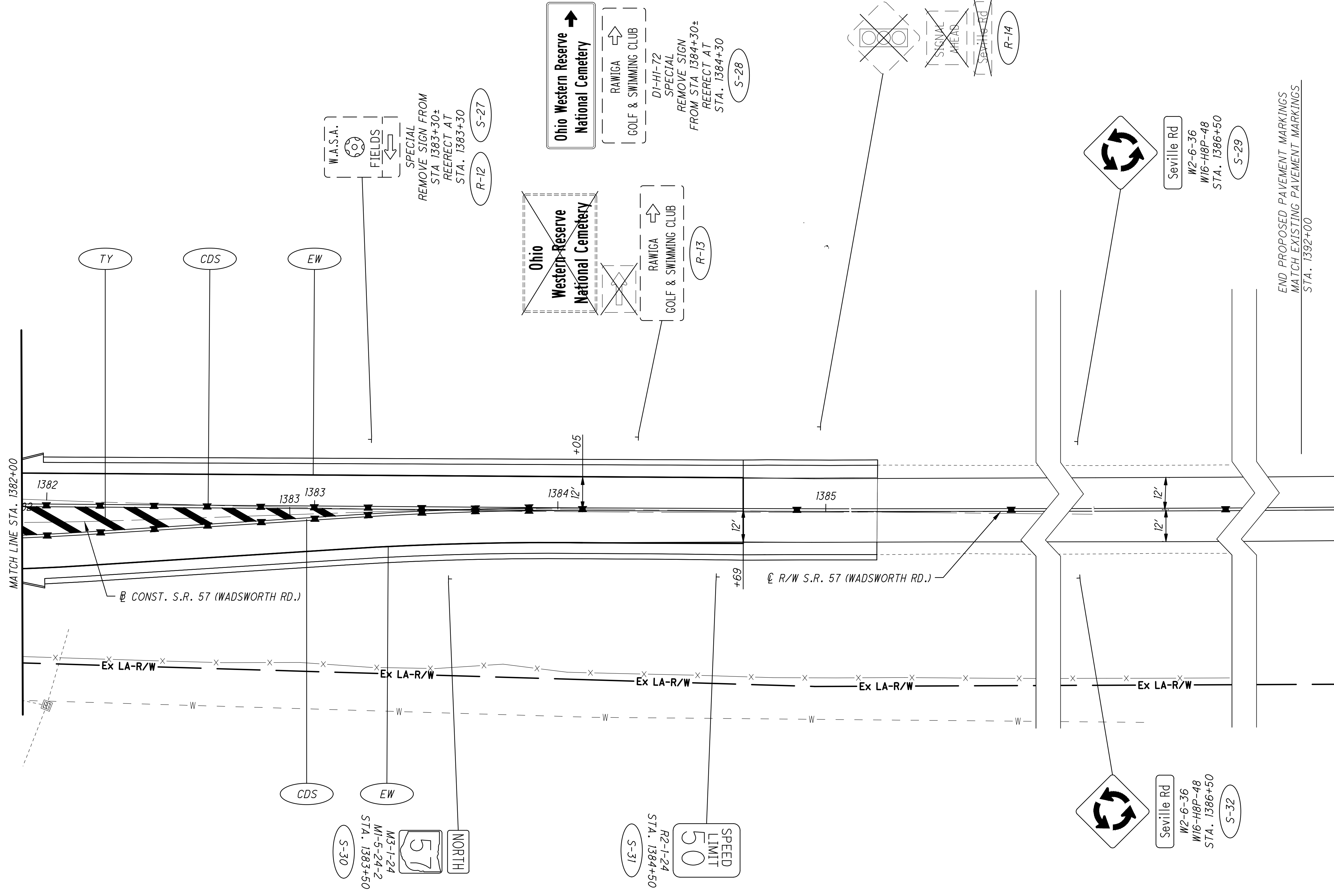
REV. NO.	INITIALS	DATE	DESCRIPTION
3	DLS	1/14/22	UPDATE ROUNDABOUT RPM



CALCULATED	DLS	CHECKED	AKF

**TRAFFIC CONTROL PLAN - S.R. 57 (WADSWORTH RD.)
STA. 1379+00 TO STA. 1382+00**

FOR TRAFFIC CONTROL LEGEND, SEE SHEET 67.



END PROPOSED PAVEMENT MARKINGS
MATCH EXISTING PAVEMENT MARKINGS
STA. 1392+00

REV. NO.	INITIALS	DATE	DESCRIPTION
3	DLS	1/14/22	UPDATE ROUNDABOUT RPM

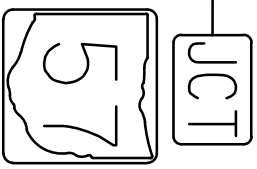
CALCULATED BY: DLS
CHECKED BY: AKF

0 10 20 40
HORIZONTAL SCALE IN FEET

**TRAFFIC CONTROL PLAN - S.R. 57 (WADSWORTH RD.)
STA. 1382+00 TO END**

BEGIN PROPOSED PAVEMENT MARKINGS
MATCH EXISTING PAVEMENT MARKINGS
STA. 10+58

M2-1-21
M1-5-24-2
STA. 13+60
S-35

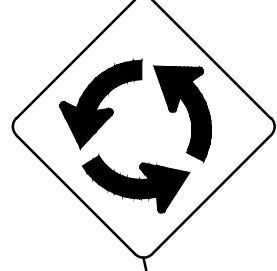


JCT

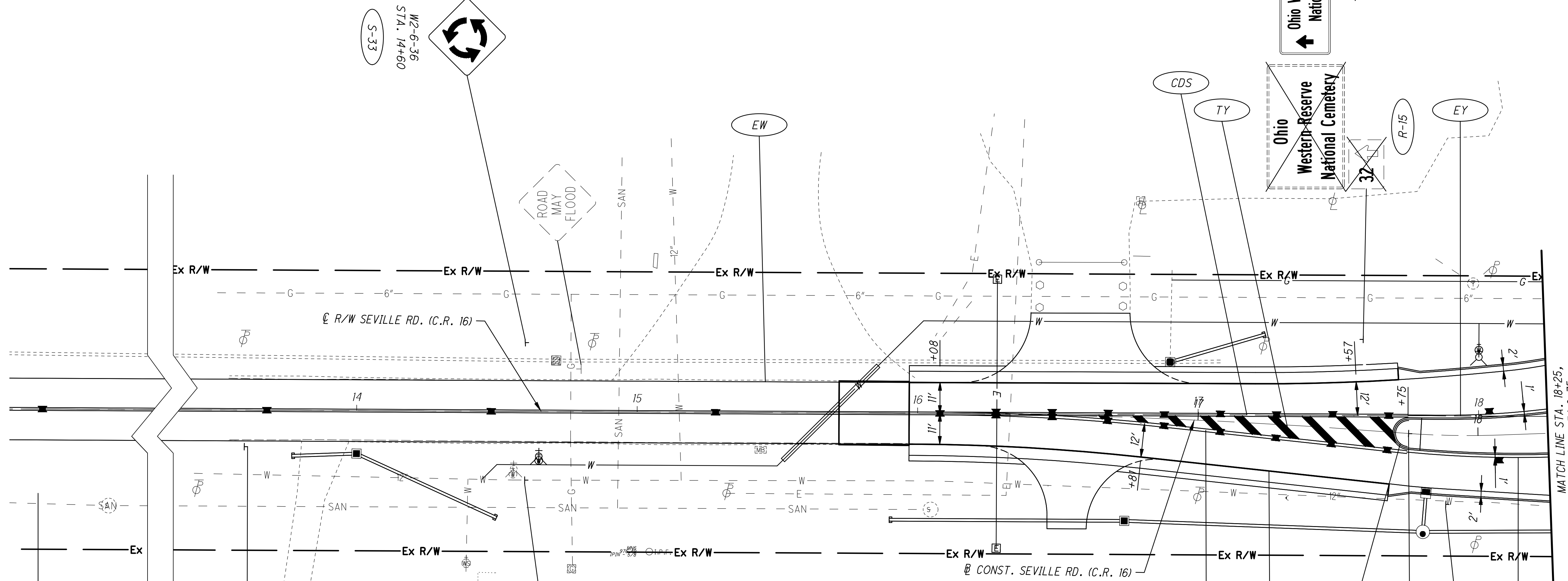
M2-6-36
STA. 14+60
S-36



M2-6-36
STA. 14+60
S-33



ROAD
MAY
FLOOD



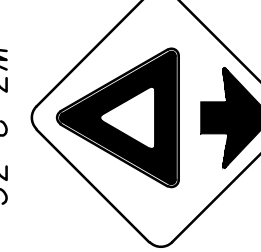
MATCH LINE STA. 18+25,
SEE SHEET 14 & 15.

Ohio Western Reserve
National Cemetery
←
D1-H10-84
STA. 17+58
S-34

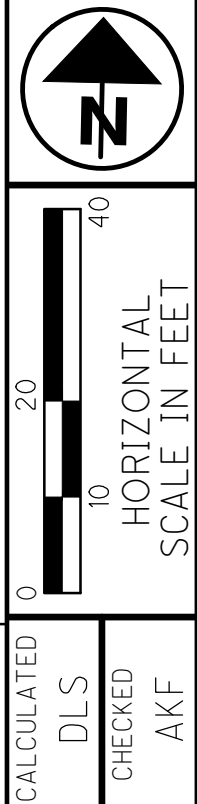
Ohio Western Reserve
National Cemetery

R4-7-24
STA. 17+75
S-37

M3-2-36
STA. 17+90
S-38

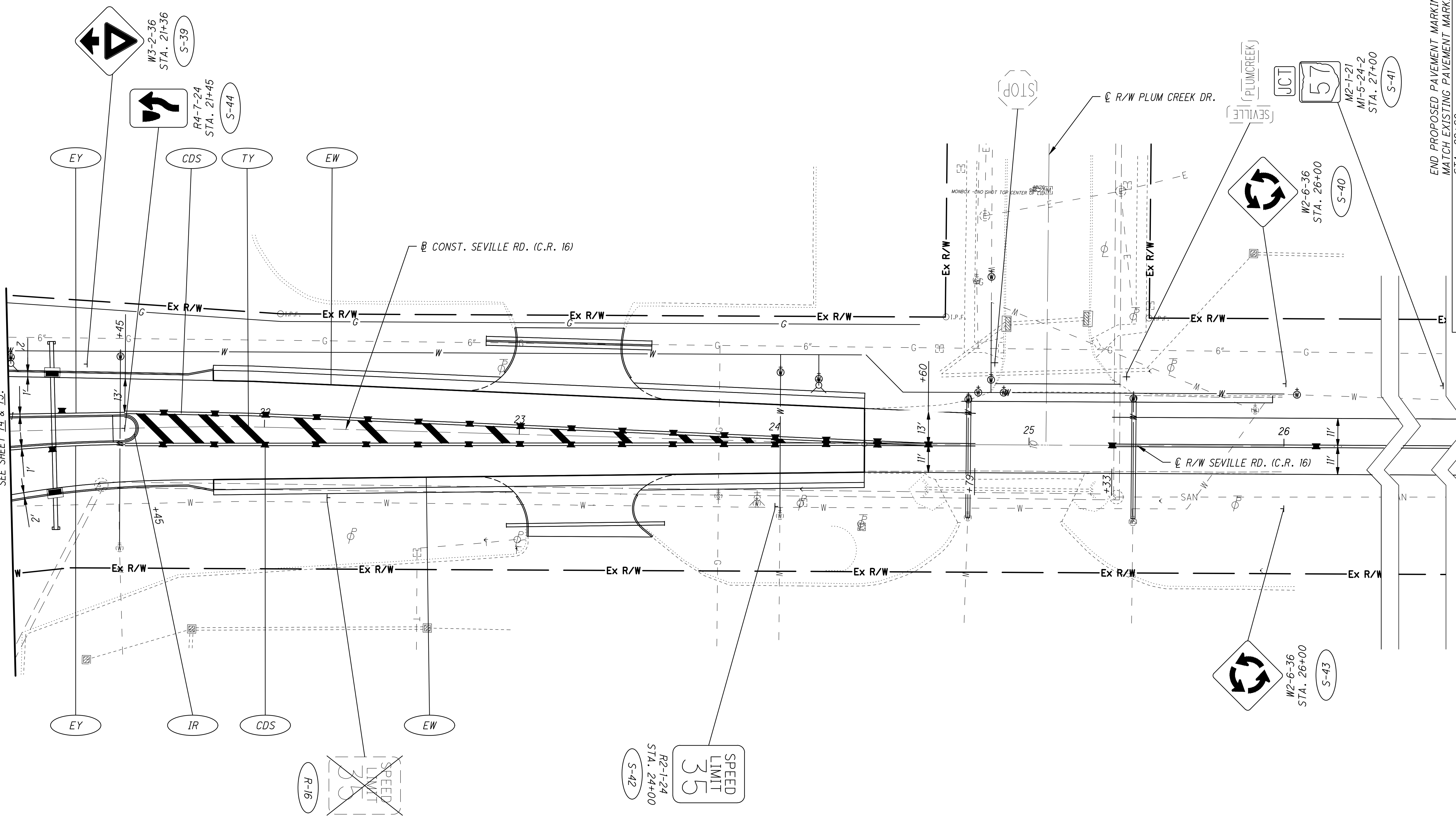


REV. NO.	INITIALS	DATE	DESCRIPTION
3	DLS	1/14/22	UPDATE ROUNDABOUT RPM



**TRAFFIC CONTROL PLAN - SEVILLE RD. (C.R.16)
BEGIN TO STA. 18+25**

MATCH LINE STA. 21+00.
SEE SHEET 74 & 75.



EY
CDS
TY
EW

EY
IR
CDS
EW

W3-2-36
STA. 21+36
S-39

R4-7-24
STA. 21+45
S-44

R-16

R2-1-24
STA. 24+00
S-42

SPEED
LIMIT
35

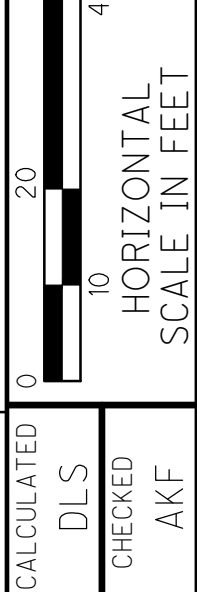
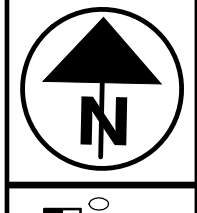
W2-6-36
STA. 26+00
S-43

W2-6-36
STA. 26+00
S-40

M2-1-21
M1-5-24-2
STA. 27+00
S-41

END PROPOSED PAVEMENT MARKINGS
MATCH EXISTING PAVEMENT MARKINGS
STA. 29+60

REV. NO.	INITIALS	DATE	DESCRIPTION
3	DLS	1/14/22	UPDATE ROUNDABOUT RPM



**TRAFFIC CONTROL PLAN - SEVILLE RD. (C.R.16)
STA. 21+00 TO END**

MED-57-1.48