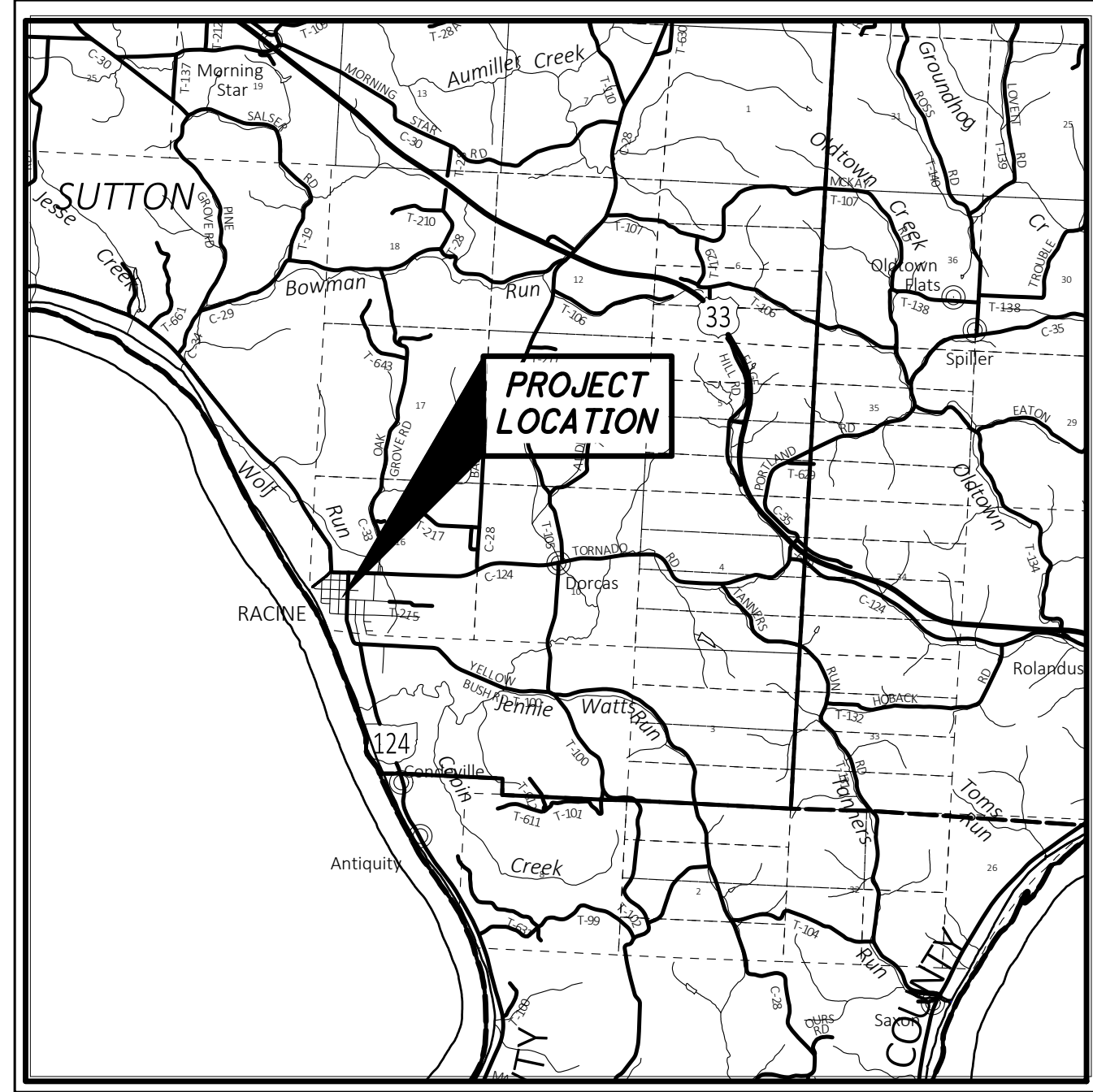
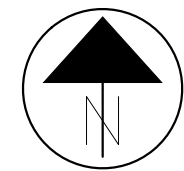


U:\Accounts\RAV\IO22001 - MEG-Racine Walk_Ride\DESIGN\CT\ProjectData\115332\400-Engineering\Roadway\Sheets\115332_GT001.dwg_March 15, 2024_CKaragory



LOCATION MAP

LATITUDE: 39°58'17" LONGITUDE: 81°54'43"



PORTION TO BE IMPROVED	_____
INTERSTATE HIGHWAY	_____
FEDERAL ROUTES	_____
STATE ROUTES	_____
COUNTY & TOWNSHIP ROADS	_____
OTHER ROADS	_____

DESIGN DESIGNATION

CURRENT ADT (20...)	N/A
DESIGN YEAR ADT (20...)	N/A
DESIGN HOURLY VOLUME (20...)	N/A
DIRECTIONAL DISTRIBUTION	N/A
TRUCKS (24 HOUR B&C)	N/A
DESIGN SPEED	N/A
LEGAL SPEED	N/A
DESIGN FUNCTIONAL CLASSIFICATION:	
PEDESTRIAN FACILITIES	
NHS PROJECT	NO

DESIGN EXCEPTIONS

NONE

UNDERGROUND UTILITIES

Contact Two Working Days
Before You Dig

OHIO811, 8-1-1, or 1-800-362-2764
(Non-members must be called directly)

PLAN PREPARED BY:
PENNONI
2 SUMMIT PARK DRIVE, SUITE 335
INDEPENDENCE, OHIO 44131

ENGINEERS SEAL:

SIGNED: *Joan M. Zbin*
DATE: 12/15/2023

STANDARD CONSTRUCTION DRAWINGS				SUPPLEMENTAL SPECIFICATIONS	SPECIAL PROVISIONS
CB-3	7/16/21	TC-22.20	1/17/14	800	10/20/23
		TC-41.20	10/18/13	832	7/21/23
DM-4.4	1/15/16	TC-42.20	10/18/13	870	7/21/23
		TC-74.10	7/21/23		
MT-97.10	4/19/19	TC-87.10	7/21/23		
HL-10.11	7/21/23				
HL-10.12	7/21/23				
HL-30.11	7/21/23				
HL-30.21	4/17/20				
HL-30.22	1/5/21				
HL-40.10	7/21/23				
HL-60.11	7/21/17				
HL-60.12	7/21/23				
HL-60.31	7/21/23				

STATE OF OHIO
DEPARTMENT OF TRANSPORTATION

MEG RACINE
WALK/RIDE PH. 4-5-8

VILLAGE OF RACINE
MEIGS COUNTY, OHIO

INDEX OF SHEETS:

TITLE SHEET	1
SCHEMATIC PLAN	2 - 3
TYPICAL SECTIONS	4
GENERAL NOTES	5 - 6
GENERAL SUMMARY	7 - 8
SUBSUMMARIES	9 - 17
PLAN AND PROFILE - 5TH STREET	18 - 22
PLAN AND DETAILS - MAIN STREET	23
PLAN AND PROFILE - ELM STREET	24 - 26
PLAN AND PROFILE - RETAINING WALL - MAIN STREET	27
CROSS SECTIONS - 5TH STREET	28 - 41
CROSS SECTIONS - MAIN STREET	42 - 43
CROSS SECTIONS - ELM STREET	44 - 50
CURB RAMP DETAILS	51 - 53
DRIVE DETAILS	54 - 55
DRAINAGE PROFILES	56
TRAFFIC CONTROL	57 - 63
LIGHTING PLANS	64 - 73

PROJECT DESCRIPTION

CONSTRUCTION OF SIDEWALK, CURB AND GUTTER, LIGHTING, AND A RETAINING WALL IN THE VILLAGE OF RACINE.

PROJECT EARTH DISTURBED AREA: 0.71 ACRES
ESTIMATED CONTRACTOR EARTH DISTURBED AREA: 0.25 ACRES
NOTICE OF INTENT EARTH DISTURBED AREA: N/A ACRES
(NOI NOT REQUIRED)

2023 SPECIFICATIONS

THE STANDARD SPECIFICATIONS OF THE STATE OF OHIO, DEPARTMENT OF TRANSPORTATION, INCLUDING SUPPLEMENTAL SPECIFICATIONS LISTED IN THE PLANS AND CHANGES LISTED IN THE PROPOSAL SHALL GOVERN THIS IMPROVEMENT.

REV. BY	DATE	DESCRIPTION
JMZ	3/15/2024	△ SIGNS CHANGED TO RRFB

FINAL PLANS - 12/15/23

I HEREBY APPROVE THESE PLANS AND DECLARE THAT THE MAKING OF THIS IMPROVEMENT WILL NOT REQUIRE THE CLOSING TO TRAFFIC OF THE HIGHWAY AND THAT PROVISIONS FOR THE MAINTENANCE AND SAFETY OF TRAFFIC WILL BE AS SET FORTH ON THE PLANS AND ESTIMATES.

APPROVED: *[Signature]*
DATE 12/15/2023 DISTRICT DEPUTY DIRECTOR

APPROVED: *[Signature]*
DATE 12/15/2023 DIRECTOR, DEPARTMENT OF TRANSPORTATION

FEDERAL PROJECT NO.
E210385

PID NO.
115332

CONSTRUCTION PROJECT NO.
.

RAILROAD INVOLVEMENT
NONE

MEG RACINE WALK/RIDE

U:\Accounts\RAVIO\RAVIO22001 - MEG-Racine Walk_Ride_DESIGN\CT\ProjectData\115332\400-Engineering\Roadway\Sheets\115332_GN001.dwg_March 18, 2024_Tbennett

SPECIFICATIONS

THE CURRENT REQUIREMENTS OF THE CONSTRUCTION AND MATERIALS SPECIFICATIONS OF THE OHIO DEPARTMENT OF TRANSPORTATION ENFORCED ON THE DATE OF THIS CONTRACT, INCLUDING ALL SUPPLEMENTS THERETO, AS WELL AS THE MANUFACTURERS RECOMMENDATIONS FOR INSTALLATIONS SHALL GOVERN THE MATERIALS AND WORKMANSHIP TO COMPLETE THE IMPROVEMENTS SET FORTH IN THESE PLANS.

CONSTRUCTION DRAWINGS, SUPPLEMENTAL SPECIFICATIONS, AND SPECIAL PROVISIONS LISTED ON THE TITLE SHEET OR REFERRED TO WITHIN THESE PLANS SHALL BE CONSIDERED A PART OF THESE PLANS.

UTILITIES

LISTED BELOW ARE ALL UTILITIES LOCATED WITHIN THE PROJECT CONSTRUCTION LIMITS TOGETHER WITH THEIR RESPECTIVE OWNERS:

WATER AND SANITARY VILLAGE OF RACINE 405 MAIN STREET RACINE, OHIO 45771 OFFICE: 740-949-2296 ATTN: SCOTT HILL
 POWER OHIO POWER (AEP) 9135 SR 682 ATHENS, OHIO 45701 800-672-2231

GAS KNOX ENERGY COOPERATIVE 17167 HUNKADORA ROAD CALDWELL, OHIO 43724 740-732-2337
 TELEPHONE FRONTIER NORTH 754 WEST UNION STREET ATHENS, OHIO 45701 740-592-0545

CONTINGENCY QUANTITIES

THE CONTRACTOR SHALL NOT ORDER MATERIALS NOR PERFORM WORK LISTED IN THE GENERAL SUMMARY FOR ITEMS DESIGNATED BY PLAN NOTE TO BE "AS DIRECTED BY THE ENGINEER". PAYMENT FOR THESE ITEMS WILL BE MADE ONLY WHEN THE WORK UNDER THE PARTICULAR ITEM HAS BEEN PERFORMED.

CONSTRUCTION STAKING

THE CONSTRUCTION STAKING SHALL BE DONE UNDER THE DIRECTION OF A PROFESSIONAL REGISTERED SURVEYOR.

EMERGENCY PHONE NUMBER

THE CONTRACTOR SHALL PROVIDE MEIGS COUNTY WITH A 24 HOUR TELEPHONE NUMBER TO READILY CONTACT A RESPONSIBLE PARTY IN THE CASE OF AN EMERGENCY. COST AND/OR DAMAGES INCURRED RELATED TO WORK PERFORMED BY THE CONTRACTOR IN SUCH EMERGENCIES ARE THE CONTRACTOR'S RESPONSIBILITY AND NOT THAT OF MEIGS COUNTY.

UNRECORDED STORM WATER DRAINAGE

FURNISH A CONTINUANCE FOR ALL UNRECORDED STORM WATER DRAINAGE, SUCH AS ROOF DRAINS, FOOTER DRAINS, OR YARD DRAINS DISTURBED BY THE WORK. FURNISH EITHER AN OPEN CONTINUANCE OR AN UNOBSTRUCTED CONTINUANCE BY CONNECTING A CONDUIT THROUGH THE CURB OR INTO A DRAINAGE STRUCTURE. THE LOCATION, TYPE, SIZE AND GRADE OF THE NEEDED CONDUIT TO REPLACE OR EXTEND AN EXISTING DRAIN WILL BE DETERMINED BY THE ENGINEER. ALL SUCH CONTINUANCE REQUIRES A RIGHT OF WAY USE PERMIT.

SURVEYING PARAMETERS

PRIMARY PROJECT CONTROL MONUMENTS GOVERN ALL POSITIONING ON ODOT PROJECTS. SEE SHEET 2 AND 3 FOR A TABLE CONTAINING PROJECT CONTROL INFORMATION.

USE THE FOLLOWING PROJECT CONTROL, VERTICAL POSITIONING, AND HORIZONTAL POSITIONING PARAMETERS FOR ALL SURVEYING:

PROJECT CONTROL

POSITIONING METHOD: ODOT-VRS GPS, TOTAL STATION MONUMENT TYPE: TYPE B, 3/4"x30" IRON PINS W/CAPS

VERTICAL POSITIONING

ORTHOMETRIC HEIGHT DATUM: NAVD 88
 GEOID: GEOID 18

HORIZONTAL POSITIONING

REFERENCE FRAME: NAD83 (2011)
 ELLIPSOID: GRS 80
 MAP PROJECTION: LAMBERT CONFORMAL CONIC
 COORDINATE SYSTEM: OH-S SPC GRID
 COMBINED SCALE FACTOR: NON CALCULATED
 ORIGIN OF COORDINATE SYSTEM: 0,0,

USE THE POSITIONING METHODS AND MONUMENT TYPE USED IN THE ORIGINAL SURVEY TO RESTORE ALL MONUMENTS RELATED TO PRIMARY PROJECT CONTROL THAT ARE DAMAGED OR DESTROYED BY CONSTRUCTION ACTIVITIES. RESTORE THE DAMAGED OR DESTROYED MONUMENTS IN ACCORDANCE WITH CMS 623.

UNITS ARE IN U.S. SURVEY FEET.

WORK LIMITS

THE CONTRACTOR SHALL CONFINE THEIR ACTIVITIES TO THE PROJECT SITE UNDER DEVELOPMENT OR THE EXISTING RIGHT-OF-WAYS, CONSTRUCTION AND/OR PERMANENT EASEMENTS AND SHALL NOT TRESPASS UPON OTHER PRIVATE PROPERTY WITHOUT THE WRITTEN CONSENT OF THE OWNER.

THE WORK LIMITS SHOWN ON THESE PLANS ARE FOR PHYSICAL CONSTRUCTION ONLY. THE INSTALLATION AND OPERATION OF ALL TEMPORARY TRAFFIC CONTROL AND TEMPORARY TRAFFIC CONTROL DEVICES REQUIRED BY THESE PLANS SHALL BE PROVIDED BY THE CONTRACTOR WHETHER INSIDE OR OUTSIDE THESE WORK LIMITS.

IRON PINS AND MONUMENTS

THE CONTRACTOR SHALL REFERENCE ALL IRON PINS AND MONUMENTS BEFORE EXCAVATING AT OR NEAR THEM. IF ANY IRON PINS OR MONUMENTS ARE DESTROYED OR DAMAGED BY THE CONTRACTOR, THEY SHALL BE ACCURATELY REPLACED BY A REGISTERED SURVEYOR EMPLOYED BY THE CONTRACTOR AT THE COMPLETION OF THE PROJECT AT NO EXPENSE TO THE COUNTY OR THE PROPERTY OWNER.

SANITARY FACILITIES

THE CONTRACTOR SHALL FURNISH AND MAINTAIN SANITARY CONVENIENCE FACILITY FOR THE WORKERS AND INSPECTORS FOR THE DURATION OF THE WORK.

SEEDING AND MULCHING

THE FOLLOWING QUANTITIES ARE PROVIDED TO PROMOTE GROWTH AND CARE OF PERMANENT SEEDED AREAS:

659, TOPSOIL 143 CU. YD.
 659, INTER-SEEDING AND MULCHING 65 SQ. YD.
 659, REPAIR SEEDING AND MULCHING 65 SQ. YD.
 659, COMMERCIAL FERTILIZER 0.18 TON
 659, LIME 0.27 ACRES
 659, WATER 7 M. GAL.
 659, SOIL ANALYSIS TEST 2 EACH

SEEDING AND MULCHING SHALL BE APPLIED TO ALL AREAS OF EXPOSED SOIL BETWEEN THE RIGHT-OF-WAY LINES, AND WITHIN THE CONSTRUCTION LIMITS FOR AREAS OUTSIDE THE RIGHT-OF-WAY LINES COVERED BY WORK AGREEMENT OR SLOPE EASEMENT. QUANTITY CALCULATIONS FOR SEEDING AND MULCHING ARE BASED ON THESE LIMITS.

ITEM 202 - PAVEMENT REMOVED, AS PER PLAN

THE FOLLOWING ITEMS ARE INCLUDED IN THE GENERAL SUMMARY TO PROVIDE A CLEAN PAVEMENT BOUNDARY FOR THE COMBINATION CURB AND GUTTER, TYPE 2 CONSTRUCTION. ANY ADDITIONAL PAVEMENT REMOVAL, REPAIR, OR RECONSTRUCTION NEEDED OUTSIDE THIS 12" SLOT SHALL BE INCIDENTAL TO THE COMBINATION CURB AND GUTTER, TYPE 2 WORK.

ITEM 202 - PAVEMENT REMOVED, AS PER PLAN 295 SY
 ITEM 252 - FULL DEPTH PAVEMENT SAWING 2584 FT
 ITEM 301 - ASPHALT CONCRETE BASE, PG64-22 (449) 49 CY
 ITEM 441 - ASPHALT CONCRETE SURFACE COURSE, TYPE 1, (449), PG64-22 16 CY

202 - WALK REMOVED, AS PER PLAN

THIS ITEM INCLUDES THE REMOVAL AND STORAGE FOR REUSE OF BRICKS

ITEM 202 - REMOVAL MISC.: CONCRETE BLOCK RETAINING WALL

THIS ITEM INCLUDES WORK TO REMOVE RETAINING WALLS WITHIN THE WORK LIMITS.

REMOVAL, SALVAGE, DELIVERY AND/OR DISPOSAL WILL BE PAID FOR AT THE CONTRACT UNIT PRICE, LUMP SUM FOR ITEM 202, REMOVAL MISC.: CONCRETE BLOCK RETAINING WALL.

ITEM 608 - 4" CONCRETE WALK, AS PER PLAN

THIS ITEM FOLLOWS CMS ITEM 608 EXCEPT THAT IT INCLUDES 6" OF ITEM 304 AND THIS ITEM SHALL CONFORM TO ALL SPECIFICATIONS AS STATED IN THE ODOT CONSTRUCTION AND MATERIALS SPECIFICATIONS EXCEPT INCLUDE SEALING OF ALL CONCRETE WALKS EXPOSED SURFACES AND SURFACES IN CONTACT WITH BACKFILL PER CMS 512.03 (NON-EPOXY).

ITEM 608 - WALKWAY, MISC.: BRICK PAVERS, AS PER PLAN

THIS ITEM INCLUDES CREATING A BRICK SIDEWALK USING THE BRICKS REMOVED ON MAIN STREET AND THIS ITEM FOLLOWS CMS ITEM 608 EXCEPT THAT IT INCLUDES 6" OF ITEM 304 UNDER BRICKS.

ITEM 690 SPECIAL - STEEL BENCH

THIS ITEM SHALL MATCH THE EXISTING BENCHES AT STAR MILL PARK WHICH ARE THOMAS STEEL 8' "CUNNINGHAM, BACKED BENCH WITH HORIZONTAL SLATS AND RECTANGULAR PLAQUE. COLOR GREY OR BLACK OR APPROVED EQUAL.

STEEL BENCH, COMPLETE IN PLACE, WILL BE PAID FOR AT THE CONTRACT UNIT PRICE PER EACH FOR ITEM SPECIAL - STEEL BENCH.

ITEM 690 SPECIAL - DECORATIVE BOLLARD FENCE

THIS ITEM SHALL CONSIST OF 4" X 36" BOLLARDS SPACED 4-FOOT APART CONNECTED WITH 2" CHAIN LINKS, COLOR BLACK. BOLT DOWN SURFACE MOUNTED TO CONCRETE WALK AS SHOWN IN PLANS. STYLE TO MATCH EXISTING BOLLARD FENCE IN STAR MILL PARK.

BOLLARD FENCE, COMPLETE IN PLACE, WILL BE PAID FOR AT THE CONTRACT UNIT PRICE PER FOOT FOR ITEM SPECIAL - DECORATIVE BOLLARD FENCE.

ITEM 690 SPECIAL - SAFETY BARRIER PLANTER

THIS ITEM SHALL BE RECTANGULAR CONCRETE PLANTER 58" X 27" WITH 3" WALL THICKNESS.

SAFETY BARRIER PLANTER, COMPLETE IN PLACE, WILL BE PAID FOR AT THE CONTRACT UNIT PRICE PER EACH FOR ITEM SPECIAL - SAFETY BARRIER PLANTER.

ITEM 870 - PREFABRICATED MODULAR RETAINING WALL, AS PER PLAN

THIS ITEM SHALL FOLLOW ITEM 870 EXCEPT AS SPECIFIED BELOW AND SHOWN ON SHEET 27.

1. THE BLOCKS SHALL BE REDI-ROCK 28" BLOCK OR APPROVED EQUAL.
2. COLOR PER ODOT ON BEHALF OF THE VILLAGE OF RACINE.
3. AGGREGATE BASE SHALL BE PER MANUFACTURERS RECOMMENDATIONS.

USE ONE OF THE CONCRETE CELLULAR WALL PRODUCTS LISTED BELOW OR AN APPROVED EQUAL:

ALLAN BLOCK "AB FIELDSTONE COLLECTION" 7424 W. 78TH STREET BLOOMINGTON, MN 55439 952-835-5309

BELGARD COMMERCIAL "AB FIELDSTONE COLLECTION" NORTH FIELD BLOCK COMPANY ONE HUNT COURT MUNDELEIN, IL 60060 847-949-3600

EARTHWORK IS TO BE QUANTIFIED UNDER ITEM 203 EXCAVATION AND EMBANKMENT.

BASIS OF PAYMENT SHALL BE PER ODOT 870 AND COVER ALL LABOR, MATERIALS, EQUIPMENT, INTERLOCKING BLOCK UNITS, CAPS, AGGREGATE BASE AND BACKFILL, FILTER FABRIC, AND OTHER ITEMS NECESSARY AND INCIDENTAL TO THE COMPLETION OF WALL CONSTRUCTION.

JMZ	3/15/2024	△	CHANGED PLANTER WALL THICKNESS
REV. BY	DATE		DESCRIPTION

CALCULATED
 CJK
 CHECKED
 JMZ
 GENERAL NOTES
 MEG RACINE WALK/RIDE
 5
 73

U:\Accounts\RAVIO\RAVIO22001 - MEG-Racine Walk_Ride\DESIGN\CT\ProjectData\115332\400-Engineering\Roadway\Sheets\115332_GG001.dwg_March 15, 2024_CKragory

SHEET NUM.											PART.			ITEM	ITEM	GRAND	UNIT	DESCRIPTION	SEE SHEET NO.
5	9	10	11	12	15	16	17	27	50	64			EXT	TOTAL					
													201	11000	LS		ROADWAY CLEARING AND GRUBBING		
	212												202	23000	212	SY	PAVEMENT REMOVED		
295	8,978												202	23001	295	SY	PAVEMENT REMOVED, AS PER PLAN	5	
	1,701												202	30000	8,978	SF	WALK REMOVED		
			152										202	30001	1,701	SF	WALK REMOVED, AS PER PLAN	5	
													202	35100	152	FT	PIPE REMOVED, 24" AND UNDER		
	3												202	53100	3	EACH	MAILBOX REMOVED		
			2										202	58100	2	EACH	CATCH BASIN REMOVED		
								LS					202	98000	LS	REMOVAL MISC.: CONCRETE BLOCK RETAINING WALL	5		
									721				203	10000	721	CY	EXCAVATION		
									184				203	20000	184	CY	EMBANKMENT		
	2,563												204	10000	2,563	SY	SUBGRADE COMPACTION		
													204	45000	2	HOUR	PROOF ROLLING		
	14,872												608	10001	14,872	SF	4" CONCRETE WALK, AS PER PLAN	5	
	330												608	52000	1,852	SF	CURB RAMP	5	
	1,624		1,522										608	98000	1,624	SF	WALKWAY, MISC.-BRICK PAVERS	5	
	3												SPECIAL	69050000	3	EACH	MAILBOX SUPPORT, SINGLE	6	
		4											SPECIAL	69098000	4	EACH	STEEL BENCH	5	
		5											SPECIAL	69098000	5	EACH	SAFETY BARRIER PLANTER	5	
		47											SPECIAL	69098100	47	FT	DECORATIVE BOLLARD FENCE	5	
																	EROSION CONTROL		
2													659	00100	2	EACH	SOIL ANALYSIS TEST		
143													659	00300	143	CY	TOPSOIL		
									1,290				659	10000	1,290	SY	SEEDING AND MULCHING		
65													659	14000	65	SY	REPAIR SEEDING AND MULCHING		
65													659	15000	65	SY	INTER-SEEDING		
0.18													659	20000	0.18	TON	COMMERCIAL FERTILIZER		
0.27													659	31000	0.27	ACRE	LIME		
7													659	35000	7	MGAL	WATER		
													832	15000	LS		STORM WATER POLLUTION PREVENTION PLAN		
													832	15002	LS		STORM WATER POLLUTION PREVENTION INSPECTIONS		
													832	15010	LS		STORM WATER POLLUTION PREVENTION INSPECTION SOFTWARE		
													832	30000	10,000	EACH	EROSION CONTROL		
																	DRAINAGE		
			361										611	04400	361	FT	12" CONDUIT, TYPE B		
			5										611	04600	5	FT	12" CONDUIT, TYPE C		
			5										611	98150	5	EACH	CATCH BASIN, NO. 3		
																	PAVEMENT		
2,584				2,804									255	20000	5,388	FT	FULL DEPTH PAVEMENT SAWING		
49				34									301	56000	83	CY	ASPHALT CONCRETE BASE, PG64-22, (449)		
				157									304	20000	157	CY	AGGREGATE BASE		
				25									407	20000	25	GAL	NON-TRACKING TACK COAT		
16				17									441	70000	33	CY	ASPHALT CONCRETE SURFACE COURSE, TYPE 1, (449), PG64-22		
				17									441	70300	17	CY	ASPHALT CONCRETE INTERMEDIATE COURSE, TYPE 2, (449)		
				52									452	10010	52	SY	6" NON-REINFORCED CONCRETE PAVEMENT, CLASS QC 1P		
				78									452	12010	78	SY	8" NON-REINFORCED CONCRETE PAVEMENT, CLASS QC 1P		
	2,572												609	12000	2,572	FT	COMBINATION CURB AND GUTTER, TYPE 2		
	284												609	26000	284	FT	CURB, TYPE 6		
																	WATER WORK		
			1										638	10500	1	EACH	FIRE HYDRANT REMOVED AND RESET		
			7										638	10800	7	EACH	VALVE BOX ADJUSTED TO GRADE		

CROSSWALK RELOCATED
832 ITEMS REMOVED, 15000, 15010, 15010
DATE
REV. BY

CALCULATED SRK CHECKED JMZ
GENERAL SUMMARY
MEG RACINE WALK/RIDE
7
73

U:\Accounts\RAVIO\RAVIO22001 - MEG-Racine Walk_Ride\DESIGN\CT\ProjectData\115332\400-Engineering\Roadway\Sheets\115332_G0002.dwg_March 15, 2024_CKaragory

SHEET NUM.												PART.		ITEM	ITEM	GRAND	UNIT	DESCRIPTION	SEE SHEET NO.
5	9	10	11	12	15	16	17	27	50	64		ITEM	EXT	TOTAL					
					183							625	00450	183	EACH	LIGHTING			
					61							625	00460	61	EACH	CONNECTION, FUSED PULL APART			
					96							625	00480	96	EACH	CONNECTION, UNFUSED PULL APART			
					14							625	10481	14	EACH	CONNECTION, UNFUSED PERMANENT			
					47							625	10481	47	EACH	LIGHT POLE, AESTHETIC, AS PER PLAN, 18' MH		64	
												625	10481	47	EACH	LIGHT POLE, AESTHETIC, AS PER PLAN, 12' MH		64	
					61							625	14000	61	EACH	LIGHT POLE FOUNDATION, 24" X 6' DEEP			
					2,448							625	23400	2,448	FT	NO. 10 AWG POLE AND BRACKET CABLE			
					12,634							625	24324	12,634	FT	1-1/2" DUCT CABLE WITH THREE NO. 6 AWG 2400 VOLT CABLES			
					840							625	25900	840	FT	CONDUIT, JACKED OR DRILLED, 3"			
					75					2		625	27403	77	EACH	LUMINAIRE, POST TOP, SOLID STATE (LED), AS PER PLAN, 5000K, TYPE III		64	
					4,899							625	29000	4,899	FT	TRENCH			
					25							625	30700	25	EACH	PULL BOX, 725.08, 18"			
					3							625	30706	3	EACH	PULL BOX, 725.08, 24"			
					61							625	32000	61	EACH	GROUND ROD			
					2							625	34001	2	EACH	POWER SERVICE, AS PER PLAN		64	
					4,899							625	36010	4,899	FT	UNDERGROUND WARNING/MARKING TAPE			
										8		625	98000	8	EACH	LIGHTING, MISC.: CLAMP ON FLOWER POTS		64	
																TRAFFIC CONTROL			
					159							630	02100	159	FT	GROUND MOUNTED SUPPORT, NO. 2 POST			
					18							630	79500	18	EACH	SIGN SUPPORT ASSEMBLY, POLE MOUNTED			
					132							630	80100	132	SF	SIGN, FLAT SHEET			
					24							630	84900	24	EACH	REMOVAL OF GROUND MOUNTED SIGN AND DISPOSAL			
					1							630	85100	1	EACH	REMOVAL OF GROUND MOUNTED SIGN AND REERECTION			
					13							630	86002	13	EACH	REMOVAL OF GROUND MOUNTED POST SUPPORT AND DISPOSAL			
					4							630	97700	4	EACH	SIGNING, MISC.: POLE MOUNTED SOLAR POWERED RECTANGULAR RAPID FLASHING BEACON SIGN ASSEMBLY		57	
							346					642	01200	346	FT	PARKING LOT STALL MARKING, TYPE 1			
							136					642	30000	136	FT	REMOVAL OF PAVEMENT MARKING			
							45					646	10400	45	FT	STOP LINE			
							655					646	10510	655	FT	CROSSWALK LINE, 12"			
							82					646	10520	82	FT	CROSSWALK LINE, 24"			
							36					646	20800	36	FT	YIELD LINE			
								850				870	10001	850	SF	RETAINING WALLS (XXX) PREFABRICATED MODULAR RETAINING WALL, AS PER PLAN		5	
								150				870	11000	150	CY	WALL EXCAVATION			
								50				870	11100	50	CY	NATURAL SOIL			
								210				870	12000	210	FT	6" DRAINAGE PIPE, PERFORATED			
								10				870	12100	10	FT	6" DRAINAGE PIPE, NON-PERFORATED			
								2				870	14000	2	DAY	ON-SITE ASSISTANCE			
							LS					870	15000	LS		PMRW INSPECTION AND COMPACTION TESTING			
												614	11000	LS		INCIDENTALS MAINTAINING TRAFFIC			
												619	16010	6	MNTH	FIELD OFFICE, TYPE B			
												623	10000	LS		CONSTRUCTION LAYOUT STAKES AND SURVEYING			
												624	10000	LS		MOBILIZATION			
												990	25100	LS		UTILITY CONFLICT/DELAYS			
												990	25100	LS		UTILITY CONFLICT/DELAYS			

3/15/2024	CHANGED TO RRFB
DATE	DESCRIPTION
REV. BY	
JMZ	

CALCULATED SRK CHECKED JMZ
 GENERAL SUMMARY
 MEG RACINE WALK/RIDE
 8
 73

U:\Accounts\RAVIO\RAVIO22001 - MEG-Racine Walk_Ride\DESIGN\CT\ProjectData\115332\400-Engineering\Roadway\Sheets\115332_GS005.dwg_March 15, 2024_TBennett

REF NO.	SHEET NO.	STATION TO STATION			202				204		608	608	608	609	609	SPECIAL	SPECIAL	SPECIAL	SPECIAL			
					PAVEMENT REMOVED	WALK REMOVED	WALK REMOVED, AS PER PLAN	MAILBOX REMOVED	SUBGRADE COMPACTION	PROOF ROLLING	4" CONCRETE WALK, AS PER PLAN	CURB RAMP	WALKWAY, MISC. BRICK PAVERS, AS PER PLAN	COMBINATION CURB AND GUTTER, TYPE 2	CURB, TYPE 6	STEEL BENCH	SAFETY BARRIER PLANTER	DECORATIVE BOLLARD FENCE	MAILBOX SUPPORT, SINGLE			
		TO			SY	SF	SF	EACH	SY	HOUR	SF	SF	SF	FT	FT	EACH	EACH	FT	EACH			
CR-6	P. 20	109+29.00	RT								73											
CR-7	P. 20	113+91.00	RT								101											
CR-8	P. 20	114+00.00	RT								80											
CR-9	P. 20	114+37.00	RT								71											
CR-10	P. 20	114+46.00	RT								104											
CR-11	P. 21	114+34.00	LT								52											
CR-12	P. 21	114+46.00	LT								50											
CR-13	P. 21	117+09.00	RT								93											
CR-14	P. 21	117+21.00	RT								60											
CR-15	P. 21	117+55.00	RT								55											
CR-16	P. 21	117+64.00	RT								83											
CR-17	P. 22	120+24.00	RT								130											
CR-18A	P. 24	3011+09.78	RT								98											
CR-18B	P. 24	3011+33.51	LT								31											
CR-19	P. 25	303+57.00	RT								47											
CR-20	P. 26	304+60.00	RT								84											
CR-21	P. 26	305+12.00	RT								105											
CR-22	P. 26	306+38.00	RT								100											
CR-23	P. 26	306+85.00	RT								105											
F-1	P. 18	103+78.00	LT	TO	104+08.00	LT											47					
B-1	P. 18	103+84.00	LT												1							
B-2	P. 18	104+00.00	LT												1							
B-3	P. 21	114+51.00	LT												1							
B-4	P. 21	114+51.00	LT												1							
P-1	P. 18	103+82.00	LT																1			
P-2	P. 19	104+03.00	LT																1			
P-3	P. 23	202+17.00	LT																1			
	P. 23	202+25.00	LT																1			
	P. 23	202+34.00	LT																1			
TOTALS CARRIED TO GENERAL SUMMARY											1522					4	5	47				

JMZ		3/15/2024	CROSSWALK RELOCATED
REV. BY		DATE	DESCRIPTION

REF NO.	SHEET NO.	LOCATION	STATION	SIDE	CODE	SIZE (INCHES)	630	630	630	630	630	630	
							GROUND MOUNTED SUPPORT, NO. 2 POST	SIGN, FLAT SHEET	REMOVAL OF GROUND MOUNTED SIGN AND DISPOSAL	REMOVAL OF GROUND MOUNTED SIGN AND REERECTION	REMOVAL OF GROUND MOUNTED POST SUPPORT AND DISPOSAL	SIGN SUPPORT ASSEMBLY, POLE MOUNTED	SIGNING, MISC. POLE MOUNTED SOLAR POWERED RECTANGULAR RAPID FLASHING BEACON SIGN ASSEMBLY
							FT	SF	EACH	EACH	EACH	EACH	EACH
S-1	P. 58		1003+41.00	RT	W11-2	30	13	6.25					
S-2	P. 58		1005+63.00	RT	R2-1	36	13.5	9					
S-3	P. 58		1008+75.00	LT	R1-5	36	13.5	9					
S-4	P. 58		1008+25.00	RT	R1-5	36	13.5	9					
S-5	P. 59		1018+84.80	RT	R1-1	30	13	6.25					
S-6	P. 59		1022+15.30	RT	R1-1	30	13	6.25					
S-7	P. 59		1022+99.00	RT	M3-4	24	12.5	4					
S-7	P. 59		1022+99.00	RT	M1-5	30	13	6.25					
S-7	P. 59		1022+99.00	RT	M5-1	21	12.25	3.0625					
S-7	P. 59		1022+99.00	RT					1				
S-8	P. 62		3010+50.00	RT	R1-5	36	13.5	9					
S-9	P. 62		3012+00.00	LT	R1-5	36	13.5	9					
S-10	P. 63		3015+20.00	LT	W11-2	30	13	6.25					
S-11	P. 58	MEMORIAL	1004+91.00	RT	D3-1	8" X 54"		3.00	1		1	1	
S-12	P. 58	FIFTH	1004+91.00	RT	D3-1	8" X 42"		2.33	1		1	1	
S-13	P. 59	VINE	1013+61.00	RT	D3-1	8" X 42"		2.33	1		1	1	
S-14	P. 59	FIFTH	1013+61.00	RT	D3-1	8" X 42"		2.33	1		1	1	
S-15	P. 59	MAIN	1018+98.00	RT	D3-1	8" X 42"		2.33	1		1	1	
S-16	P. 59	FIFTH	1018+98.00	RT	D3-1	8" X 42"		2.33	1		1	1	
S-17	P. 59	PEARL	1022+17.00	RT	D3-1	8" X 42"		2.33	1		1	1	
S-18	P. 59	FIFTH	1022+17.00	RT	D3-1	8" X 42"		2.33	1		1	1	
S-19	P. 60	SYCAMORE	1025+53.00	RT	D3-1	8" X 60"		3.33	1		1	1	
S-20	P. 60	FIFTH	1025+53.00	RT	D3-1	8" X 42"		2.33	1		1	1	
S-21	P. 62	ELM	3007+75.00	RT	D3-1	8" X 36"		2.00	1		1	1	
S-22	P. 62	FIFTH	3007+75.00	RT	D3-1	8" X 42"		2.33	1		1	1	
S-23	P. 62	FOURTH	3004+74.00	RT	D3-1	8" X 48"		2.67	1		1	1	
S-24	P. 62	ELM	3004+74.00	RT	D3-1	8" X 36"		2.00	1		1	1	
S-25	P. 63	N BROADWAY	3012+98.00	RT	D3-1	8" X 60"		3.33	1		1	1	
S-26	P. 63	ELM	3012+98.00	RT	D3-1	8" X 36"		2.00	1		1	1	
S-27	P. 63	TYREE	3015+94.00	RT	D3-1	8" X 48"		2.67	1		1	1	
S-28	P. 63	ELM	3015+94.00	RT	D3-1	8" X 36"		2.00	1		1	1	
S-29	P. 58		1004+90.00	RT	W11-2	30		6.25					
S-30	P. 58		1008+42.00	LT	W16-7PL	30	14.3	3.75					1
S-31	P. 58		1008+65.00	RT	W16-7PL	30	14.3	3.75					1
S-32	P. 62		3010+97.00	RT	W11-2	30		6.25					1
S-33	P. 62		3011+33.00	LT	W16-7PL	30	14.3	3.75					1
R-5	P. 58		1005+63.00	RT					1		1		
R-7	P. 59		1018+84.80	RT					1		1		
R-11	P. 59		1022+13.90	RT					1		1		
R-12	P. 59		1022+99.00	RT					3		1		
TOTALS CARRIED TO GENERAL SUMMARY							159	132	24	1	13	18	4

JMZ	3/15/2024	△ SIGNS CHANGED TO RRFB, CROSSWALK RELOCATED
REV. BY	DATE	DESCRIPTION

REF NO.	SHEET NO.	STATION TO STATION							642 PARKING LOT STALL MARKING, TYPE 1 FT	642 REMOVAL OF PAVEMENT MARKING FT				646 STOP LINE FT	646 CROSSWALK LINE, 12" FT	646 CROSSWALK LINE, 24" FT	646 YIELD LINE FT															
YL-1	P. 58	1008+25.00																9														
YL-2	P. 58	1008+75.00																9														
YL-3	P. 62	3012+80.00																9														
YL-4	P. 63	3014+19.00																9														
SL-1	P. 59	1013+82.00												9																		
SL-2	P. 59	1018+84.00												12																		
SL-3	P. 59	1018+71.75												12																		
SL-4	P. 59	1022+04.65												12																		
CW-1	P. 58	1004+81.00														50																
CW-2	P. 58	1008+50.00															40															
CW-3	P. 59	1013+57.00																46														
CW-4	P. 59	1013+78.00																42														
CW-5	P. 59	1018+52.00																48														
CW-6	P. 59	1018+76.90																55														
CW-7	P. 59	1019+06.27																54														
CW-8	P. 59	1018+79.90																48														
CW-9	P. 59	1021+70.32																38														
CW-10	P. 59	1022+23.90																42														
CW-11	P. 59	1022+00.00																52														
CW-12	P. 60	1025+21.30																110														
CW-13	P. 63	3013+20.00																70														
CW-14	P. 63	3011+22.00																42														
R-6	P. 59	1013+82.00																														
R-8	P. 59	1018+85.00													10																	
R-9	P. 59	1018+72.20													10																	
R-10	P. 59	1022+05.65													10																	
R-13	P. 60	1025+22.15													96																	
PS-1	P. 61	2003+54.41		TO	2004+20.41									98.00																		
PS-2	P. 61	2004+52.56		TO	2005+40.56									128																		
PS-3	P. 59	1019+21.00		TO	1019+91.00									120																		
TOTALS CARRIED TO GENERAL SUMMARY									346	136							45	655	82	36												

JMZ 3/15/2024 CROSSWALK RELOCATED

REV. BY DATE

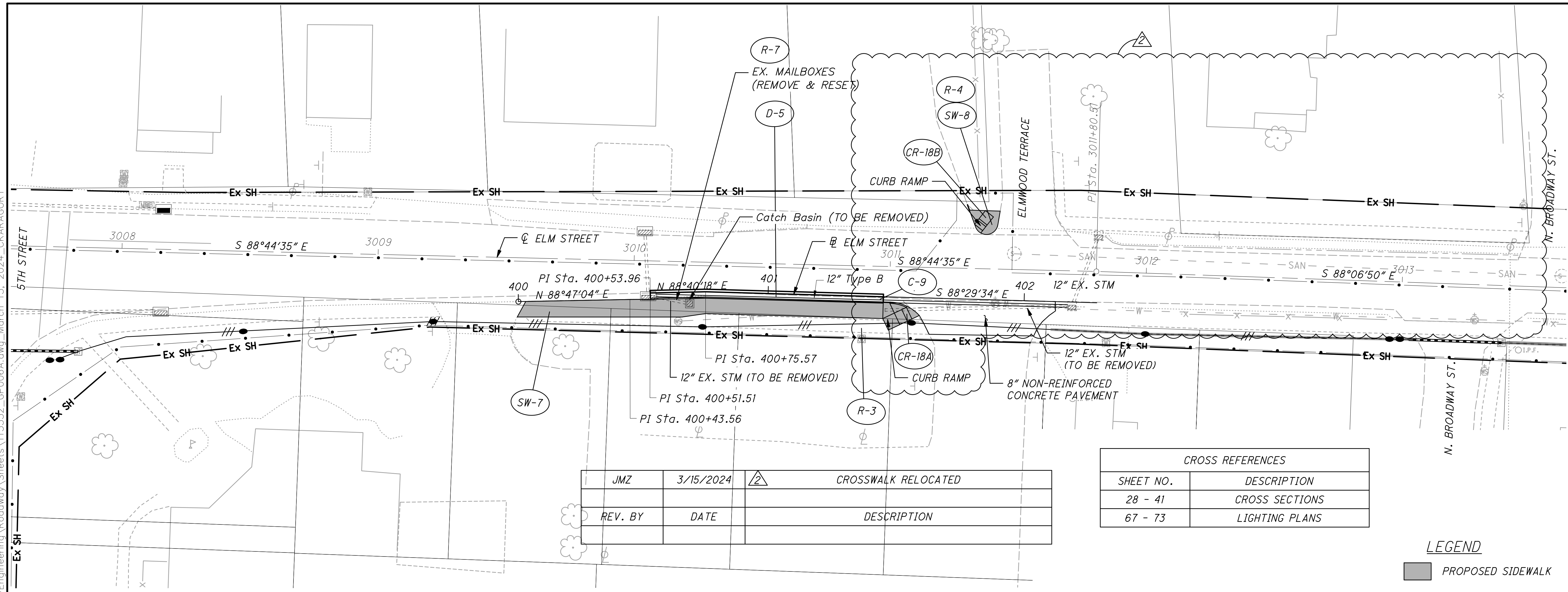
CALCULATED	
SRK	JMZ
CHECKED	

MEG RACINE WALK/RIDE

PAVEMENT MARKING SUBSUMMARY

17 / 73

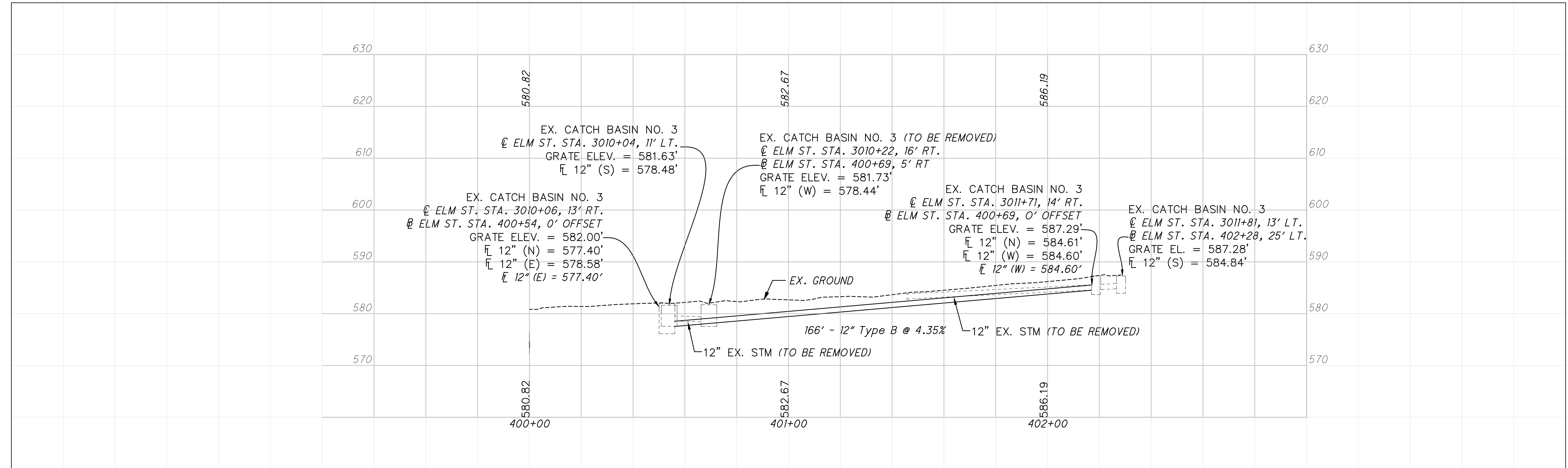
U:\Accounts\RAVIO\RAVIO22001 - MEG-Racine Walk_Ride\DESIGN\CT\ProjectData\115332_400-Engineering\Roadway\Sheets\115332_GPO06A.dwg, March 15, 2024, CKARAGORY



REV. BY	DATE	DESCRIPTION
JMZ	3/15/2024	CROSSWALK RELOCATED

CROSS REFERENCES	
SHEET NO.	DESCRIPTION
28 - 41	CROSS SECTIONS
67 - 73	LIGHTING PLANS

LEGEND
 PROPOSED SIDEWALK



CALCULATED TDB CHECKED JMZ

0 10 20 40
 HORIZONTAL SCALE IN FEET

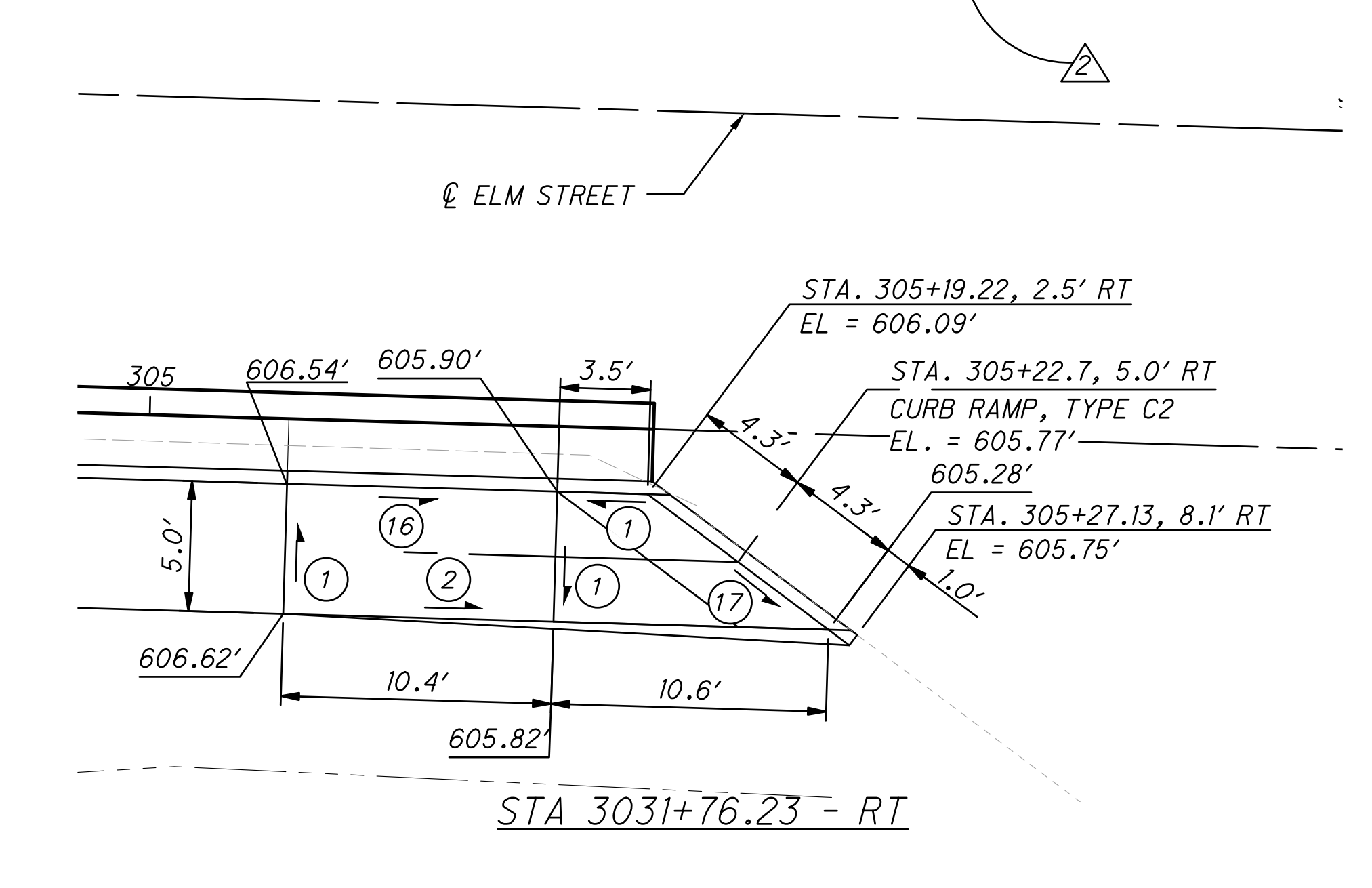
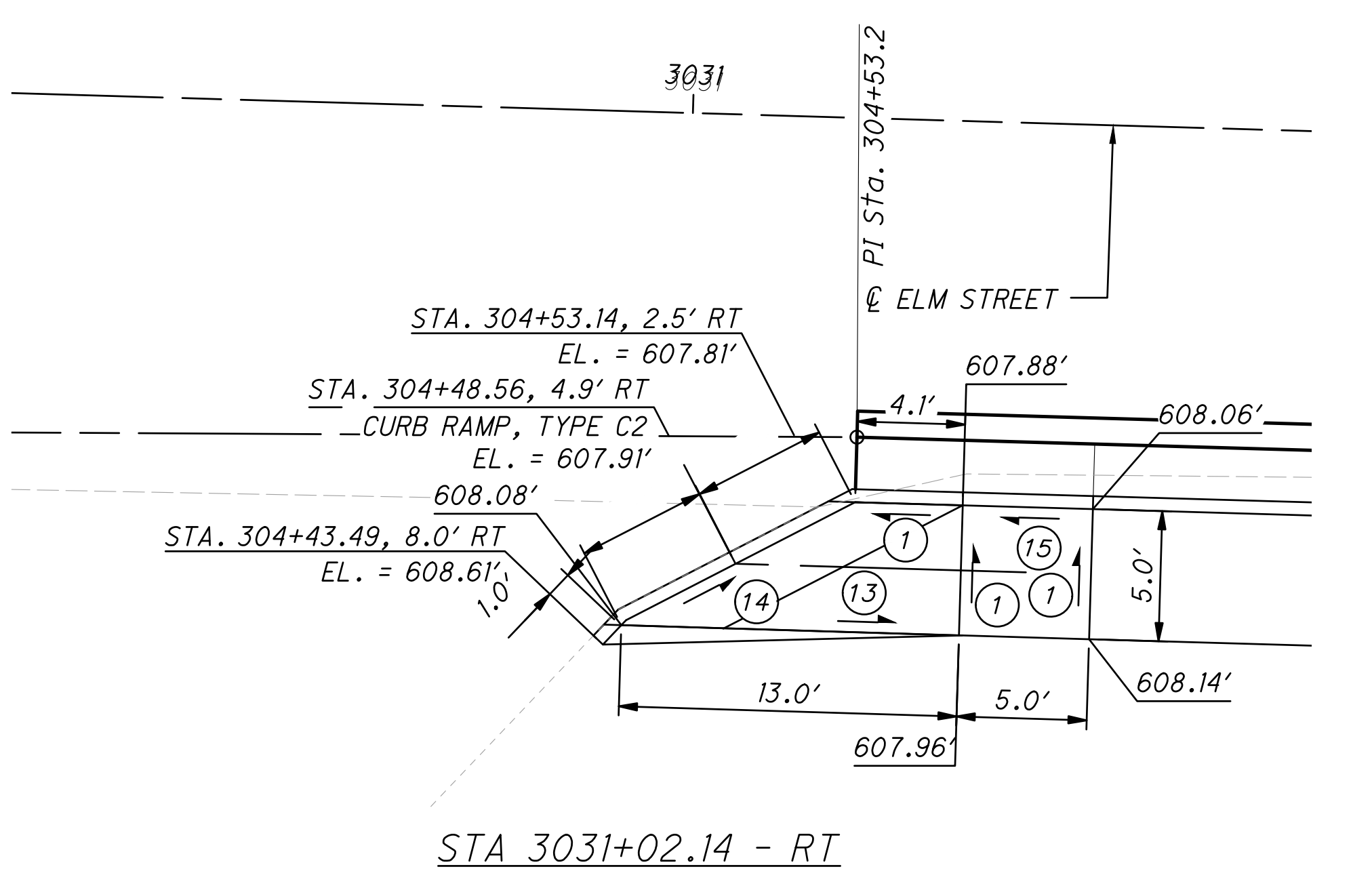
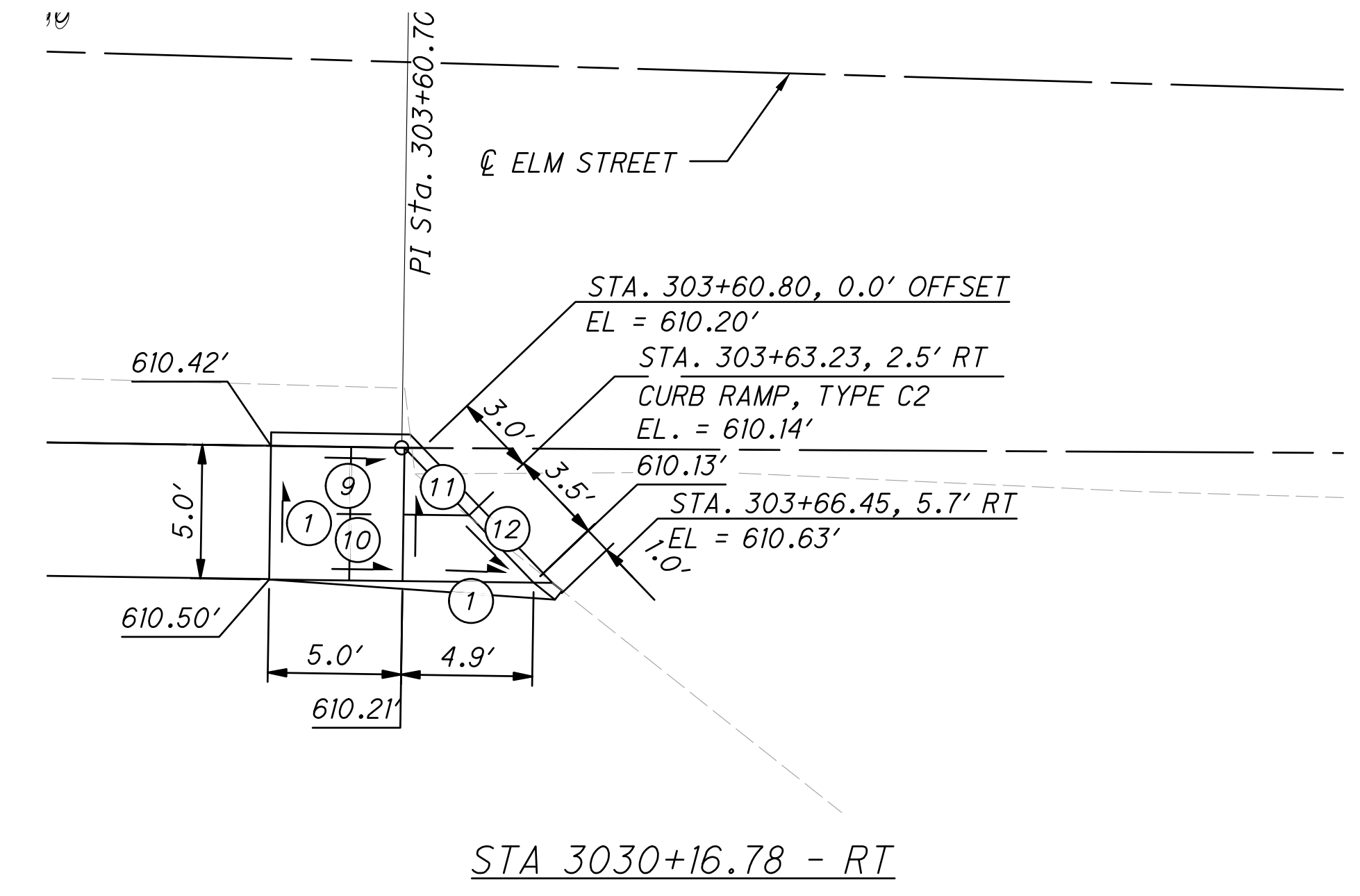
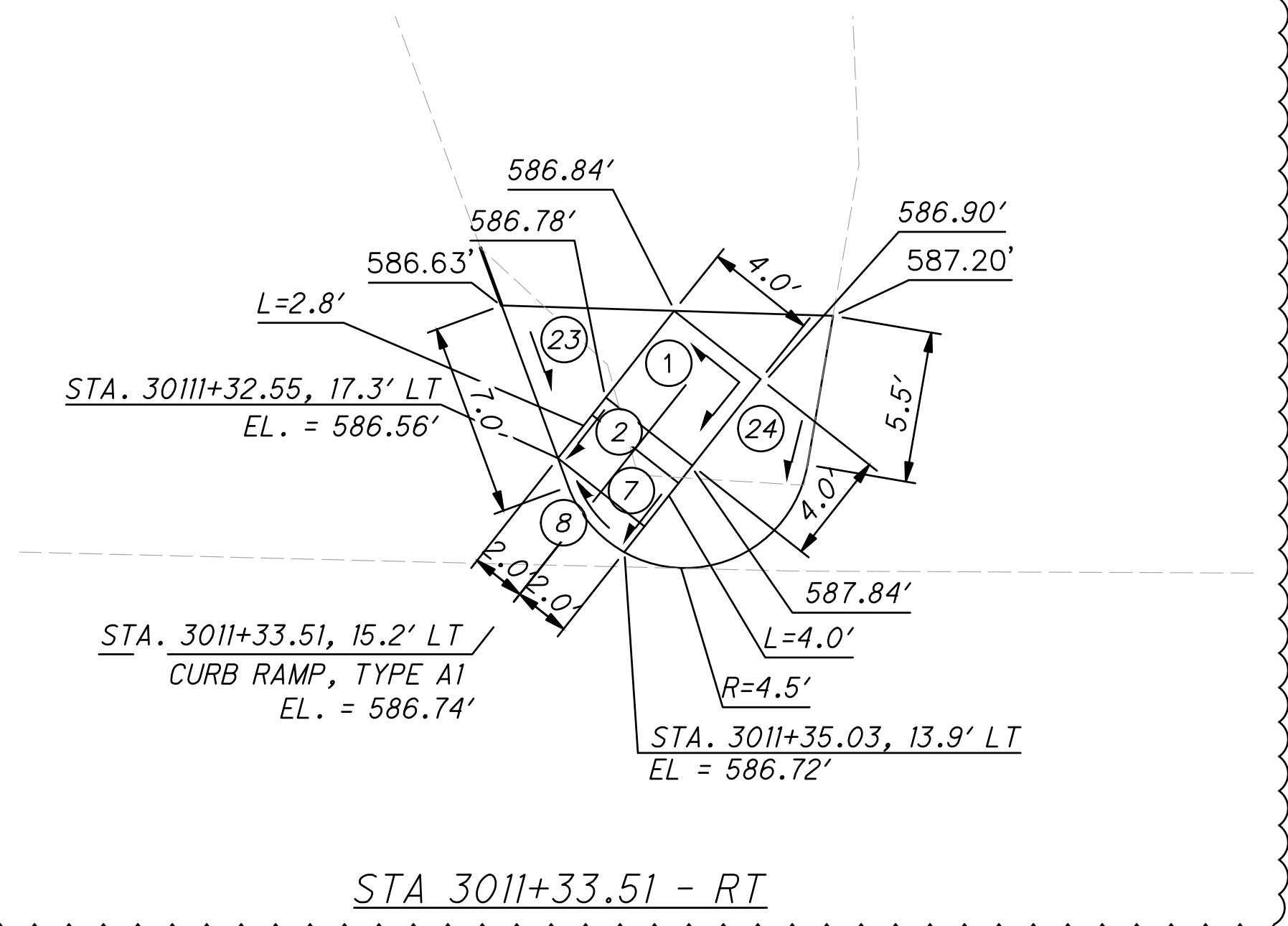
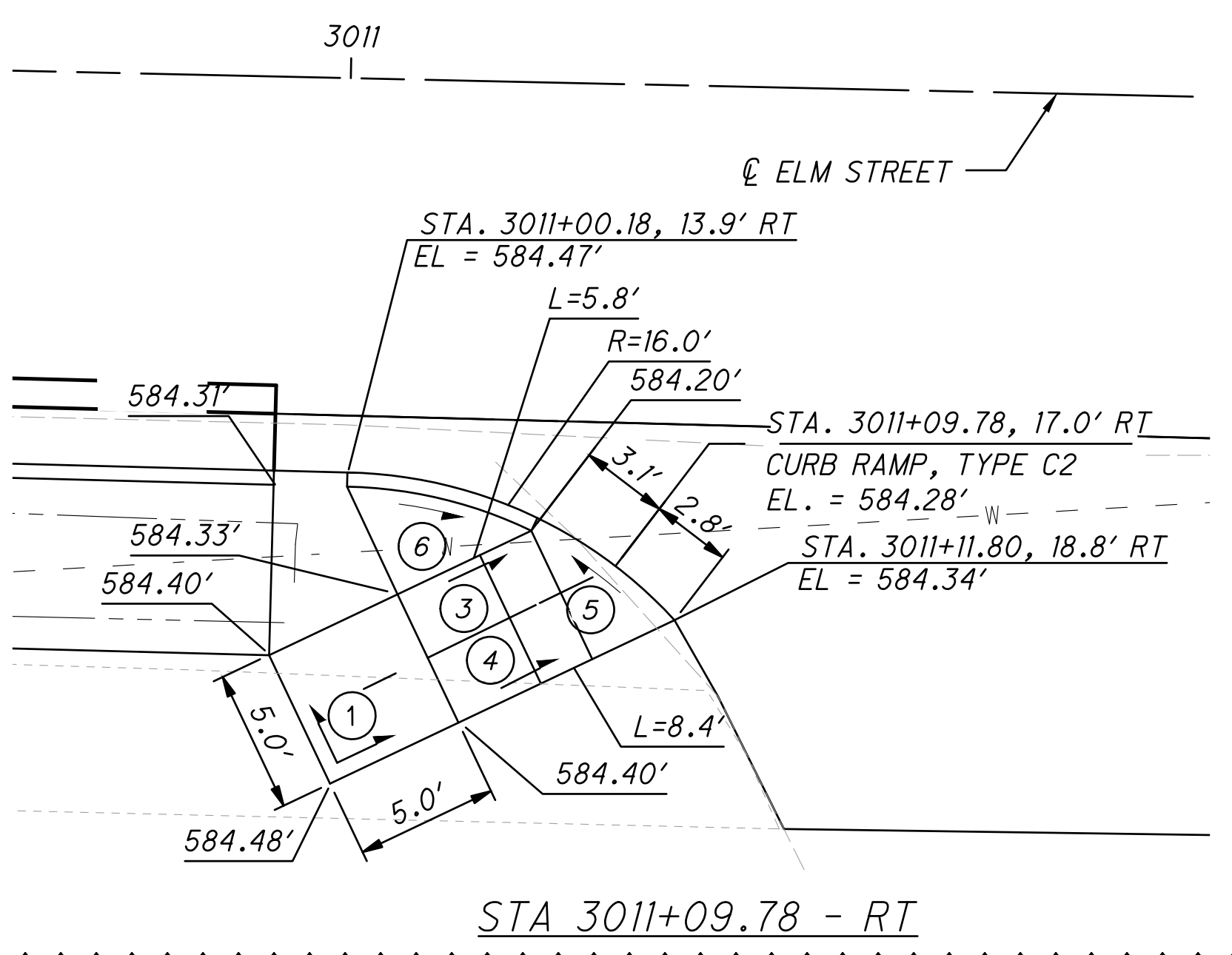
▲
 N

PLAN AND PROFILE - ELM STREET
 STA. 400+00.00 TO STA. 402+12.18

MEG RACINE WALK/RIDE

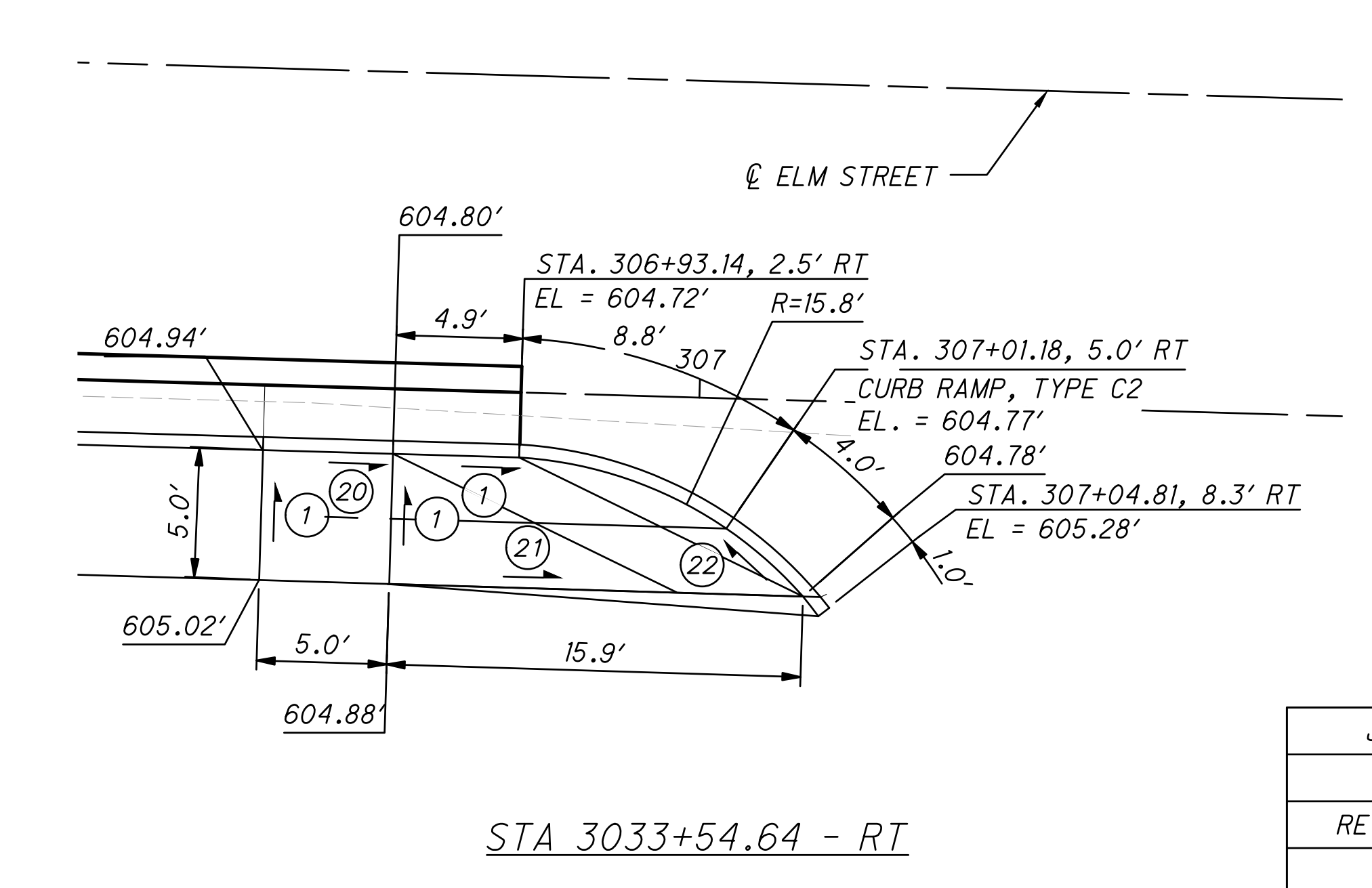
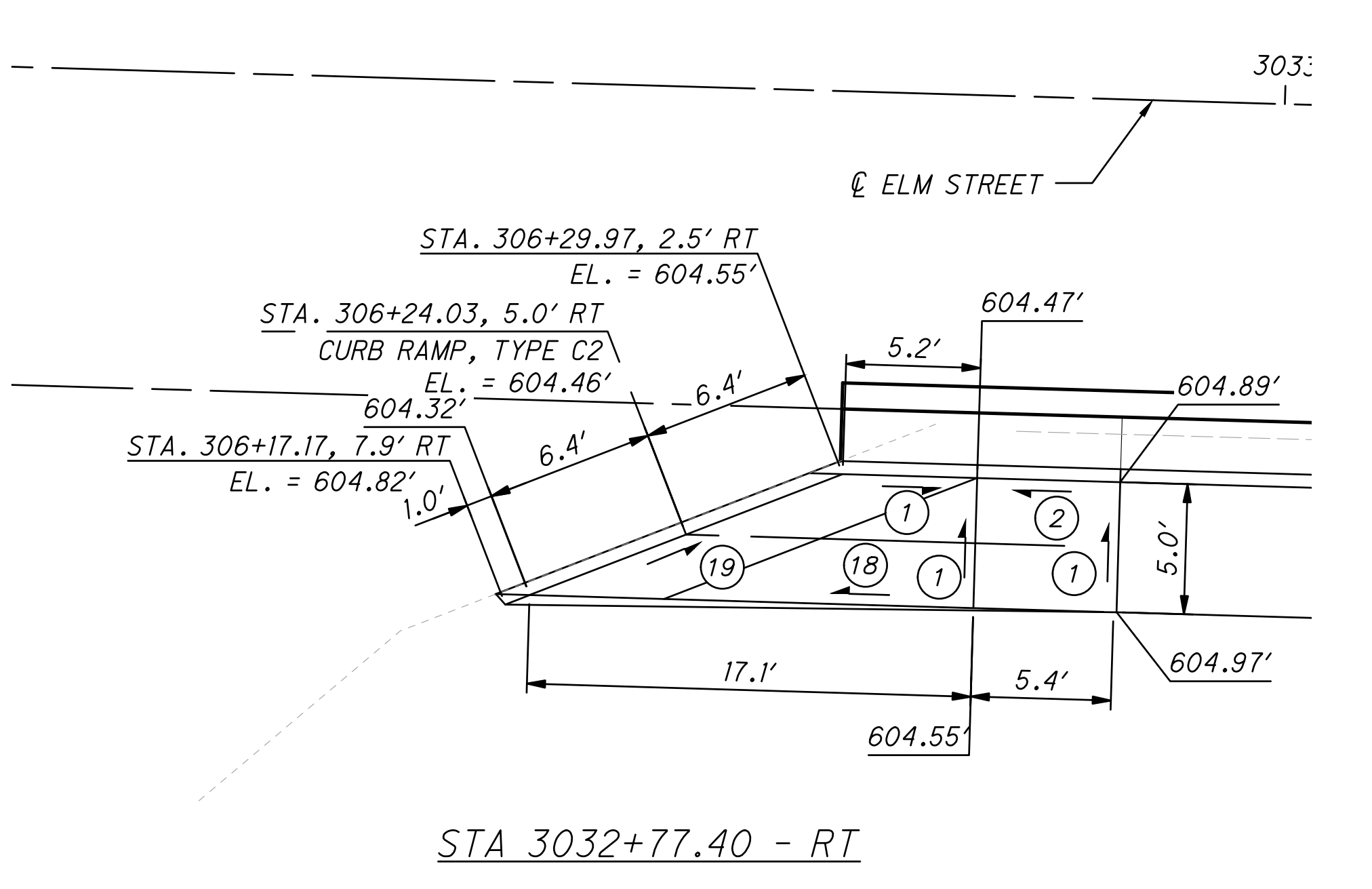
U:\Accounts\RAV\IO\RAV\IO22001 - MEG-Racine Walk_Ride\DESIGN\CT\ProjectData\115332\400-Engineering\Roadway\Sheets\115332_G1001.dwg, March 15, 2024_CKaragory

HORIZONTAL SCALE IN FEET
 0 5 10
 CALCULATED TDB CHECKED JMZ



LEGEND

① 1.56%	⑦ 2.86%	⑬ 0.97%	⑲ 1.75%
② 7.69%	⑧ 3.82%	⑭ 2.65%	⑳ 2.91%
③ 2.07%	⑨ 4.46%	⑮ 3.73%	㉑ 0.59%
④ 0.81%	⑩ 5.76%	⑯ 6.44%	㉒ 0.46%
⑤ 2.32%	⑪ 0.26%	⑰ 7.74%	㉓ 1.22%
⑥ 3.79%	⑫ 0.93%	⑱ 1.31%	㉔ 3.37%



JMZ	3/15/2024	△	CROSSWALK RELOCATED
REV. BY	DATE		DESCRIPTION

CURB RAMP DETAILS
 ELM STREET
 MEG RACINE WALK/RIDE
 53
 73

U:\Accounts\RAVIO\RAVIO22001 - MEG-Racine Walk_Ride\DESIGN\CT\ProjectData\115332\400-Engineering\Traffic\Sheets\115332_TN001.dwg_March 15, 2024_CKaragory

ITEM 630 SIGNING MISC.: SOLAR-POWERED RECTANGULAR RAPID FLASHING BEACON (RRFB) SIGN ASSEMBLY

THIS WORK SHALL CONSIST OF FURNISHING AND INSTALLING A SOLAR POWERED RECTANGULAR RAPID FLASHING BEACON (RRFB) SIGN ASSEMBLIES AT STA. 1008+43, 15.50' LT., CENTERLINE FIFTH ST. (S.R. 124), STA. 1008+57, 20.00' RT., CENTERLINE FIFTH ST. (S.R. 124), STA. 3010+97, 22.50' RT. CENTERLINE ELM ST AND STA. 3011+33, 22.00' LT. CENTERLINE ELM ST. THE FLASHING UNIT SHALL BE SOLAR POWERED, PEDESTRIAN ACTIVATED, AND 2-SIDED WITH TWO LED ARRAY BASED YELLOW INDICATIONS ON EACH SIDE. MULTIPLE UNITS SHALL BE WIRELESSLY CONTROLLED AND SYNCHRONIZED. THE UNIT SHALL BE COMPLIANT WITH THE MOST CURRENT OHIO MANUAL OF UNIFORM TRAFFIC CONTROL DEVICES (OMUTCD) AND FHWA INTERIM APPROVAL FOR RRFBs (IA-21).

GENERAL REQUIREMENTS

EACH RRFB SHALL CONSIST OF TWO RAPIDLY FLASHED RECTANGULAR-SHAPED YELLOW INDICATIONS HAVING LED ARRAY BASED LIGHT SOURCE.

EACH RRFB SHALL BE A COMPLETE ASSEMBLY, CONSISTING OF BUT NOT LIMITED TO, SIGNAGE, SIGN MOUNTING HARDWARE, INDICATIONS AND ELECTRICAL COMPONENTS (WIRING, SOLID-STATE CIRCUIT BOARDS, ETC.).

EACH RRFB SHALL CONTAIN A PEDESTRIAN INDICATION LIGHT VISIBLE BY THE PEDESTRIAN IN THE DIRECTION OF TRAVEL.

FUNCTIONAL REQUIREMENTS

EACH RRFB SHALL UTILIZE SOLAR POWER.

EACH RRFB SHALL BE ACTIVATED BY ADA COMPLIANT PUSHBUTTONS.

THE RRFB SHALL BE NORMALLY DARK, SHALL INITIATE OPERATION ONLY UPON PEDESTRIAN ACTUATION, AND SHALL CEASE OPERATION AFTER A PREDETERMINED TIME LIMIT (BASED ON OMUTCD PROCEDURES).

EACH REMOTE RRFB SHALL BE WIRELESSLY ACTIVATED.

ALL RRFB LIGHT INDICATIONS SHALL BE WIRELESSLY SYNCHRONIZED (ALL LIGHTS WILL TURN ON WITHIN 120 MSEC AND REMAIN SYNCHRONIZED THROUGHOUT THE DURATION OF THE FLASHING CYCLE).

THE UNIT SHALL BE CAPABLE OF RUNNING 14 DAYS WITHOUT SUNLIGHT.

MATERIALS

FURNISH A COMPLETE ASSEMBLY, CONSISTING OF BUT NOT LIMITED TO, SIGNAGE, SIGN MOUNTING HARDWARE, INDICATIONS, AND ELECTRICAL COMPONENTS (WIRING, SOLID-STATE CIRCUIT BOARDS, ETC.). THE RRFB ASSEMBLY INCLUDES THE FOLLOWING ITEMS:

1. RRFB INDICATIONS

- A. EACH RRFB INDICATION LENS SHALL BE A MINIMUM SIZE OF APPROXIMATELY 5" WIDE X 2" HIGH.
- B. THE RRFB INDICATIONS SHALL BE ALIGNED HORIZONTALLY, WITH THE LONGER DIMENSION OF THE INDICATION HORIZONTAL. THERE SHALL BE TWO INDICATIONS ON THE FRONT AND TWO INDICATIONS ON THE BACK.

ITEM 630 SIGNING MISC.: SOLAR-POWERED RECTANGULAR RAPID FLASHING BEACON (RRFB) SIGN ASSEMBLY - CONTINUED

- C. EACH RRFB SHALL BE SUPPLIED WITH ALL REQUIRED HARDWARE TO INSTALL ASSEMBLY. ALL EXPOSED HARDWARE SHALL BE ANTI-VANDAL.
- D. EACH RRFB SHALL BE LOCATED BETWEEN THE BOTTOM OF THE CROSSING WARNING SIGN AND THE TOP OF THE SUPPLEMENTAL DOWNWARD DIAGONAL ARROW PLAQUE.
- E. THE LIGHT INTENSITY OF THE YELLOW INDICATIONS SHALL MEET THE MINIMUM CLASS 1 SPECIFICATIONS OF SOCIETY OF AUTOMOTIVE ENGINEERS (SAE) STANDARD J595 (DIRECTIONAL FLASHING OPTICAL WARNING DEVICES FOR AUTHORIZED EMERGENCY, MAINTENANCE, AND SERVICE VEHICLES) DATED JANUARY, 2005.
- F. TO MINIMIZE EXCESSIVE GLARE DURING NIGHTTIME CONDITIONS, AN AUTOMATIC SIGNAL DIMMING DEVICE SHALL BE USED TO REDUCE THE BRILLIANCE OF THE RRFB INDICATIONS.
- G. AN LED PEDESTRIAN CONFIRMATION LIGHT DIRECTED AT AND VISIBLE TO PEDESTRIANS IN THE CROSSWALK SHALL BE INSTALLED INTEGRAL TO THE RRFB OR PUSHBUTTON TO GIVE CONFIRMATION THAT THE RRFB IS IN OPERATION.
- H. THE PEDESTRIAN CONFIRMATION LIGHT SHALL HAVE A MINIMUM AREA OF 0.5 SQUARE INCHES AND BE CONSPICUOUS TO PEDESTRIANS AT ALL DISTANCES FROM THE BEGINNING OF THE CONTROLLED CROSSWALK TO A POINT 10 FEET FROM THE END OF THE CONTROLLED CROSSWALK DURING BOTH DAY AND NIGHT.

2. SIGNS

- A. ALL SIGN ASSEMBLIES SHALL USE ANTI-VANDAL FASTENERS TO MOUNT COMPONENTS TO SIGN AND SIGN TO FIXTURE.
- B. PEDESTRIAN PUSHBUTTONS SIGNS SHALL BE PROVIDED AND INCLUDE THE LEGEND "PUSH BUTTON TO TURN ON WARNING LIGHTS". SIGNS SHOULD BE MOUNTED ADJACENT TO OR INTEGRAL WITH EACH PEDESTRIAN PUSHBUTTON.
- C. TWO SETS OF SIGNS SHALL BE REQUIRED PER UNIT FOR VIEW FROM EACH APPROACH.
- D. ASSURE SIGN MEETS THE REQUIREMENTS OF C&MS 630.

3. CONTROL CIRCUIT

- A. THE CONTROL CIRCUIT SHALL HAVE THE CAPABILITY OF INDEPENDENTLY FLASHING UP T TWO INDEPENDENT OUTPUTS. THE LED LIGHT OUTPUTS AND FLASH PATTERN SHALL BE COMPLETELY PROGRAMMABLE.
- B. THE CONTROL CIRCUIT SHALL BE SEALED WATERTIGHT TO ELIMINATE DIRT CONTAMINATION AND ALLOW FOR SAFE HANDLING IN ALL WEATHER CONDITIONS.

ITEM 630 SIGNING MISC.: SOLAR-POWERED RECTANGULAR RAPID FLASHING BEACON (RRFB) SIGN ASSEMBLY - CONTINUED

- C. THE LEDS SHALL BE SEALED AGAINST DUST AND MOISTURE INTRUSION AS PER THE REQUIREMENTS OF NEMA STANDARD 250-1991 FOR TYPE 4 ENCLOSURE AND TO PROTECT ALL INTERNAL LED AND ELECTRICAL COMPONENTS.
- 4. BATTERY AND SOLAR PANELS
 - A. BATTERY UNIT SHALL BE A 12VDC, 35 AHR MINIMUM, SEALED GEL OR AGM LEAD ACID BATTERY. BATTERIES SHALL HAVE A WRITTEN TWO YEAR FULL REPLACEMENT WARRANTY.
 - B. THE SOLAR PANEL SHALL PROVIDE A MINIMUM OF 40 WATTS PEAK TOTAL OUTPUT.
 - C. THE SOLAR PANEL SHALL BE MOUNTED TO AN ALUMINUM PLATE AND BRACKET AT AN ANGLE OF 45 DEGREES - 60 DEGREES TO PROVIDE MAXIMUM OUTPUT.
 - D. ALL FASTENERS USED SHALL BE ANTI-VANDAL.
- 5. WIRELESS RADIO
 - A. RADIO CONTROL SHALL OPERATE ON A 900 MHZ FREQUENCY HOPPING SPREAD SPECTRUM NETWORK, WI-FI OR APPROVED EQUAL.
 - B. RADIO SHALL INTEGRATE COMMUNICATION OF RRFB CONTROL CIRCUIT TO ACTIVATE SIGN FROM PUSHBUTTON INPUT.
 - C. THE RADIO SHALL BE SYNCHRONIZED SO ALL OF THE REMOTE RRFB LIGHT INDICATIONS WILL TURN ON WITHIN 120 MSEC OF EACH OTHER AND REMAIN SYNCHRONIZED THROUGH-OUT THE DURATION OF THE FLASHING CYCLE.
- 6. PUSHBUTTON
 - A. THE PUSHBUTTON SHALL BE CAPABLE OF CONTINUOUS OPERATION OVER A TEMPERATURE RANGE OF -30 DEGREES F TO +165 DEGREES F.
 - B. PUSHBUTTON SHALL BE ADA COMPLIANT.
- 7. PEDESTAL SHAFT AND BASE
 - A. MOUNT ON A STANDARD 4.5-INCH OD ALUMINUM PEDESTAL POLE WITH BREAKAWAY BASE. A 14 FOOT POLE SHALL BE PROVIDED AND FIELD ADJUSTED AND CAPPED TO MAINTAIN THE PROPER SIGN MOUNTING HEIGHTS, UNLESS SPECIFIED OTHERWISE IN THE PLANS. POLE AND BASE MANUFACTURER SHALL BE LISTED ON ODOT'S QUALIFIED PRODUCTS LIST.

CONSTRUCTION

THE RRFB SHALL BE ASSEMBLED AND CONSTRUCTED BY THE CONTRACTOR AS SHOWN AND SPECIFIED ON THE PLANS.

WARRANTY

WARRANTY SHALL BE TWO YEARS FROM THE DATE OF FINAL ACCEPTANCE.

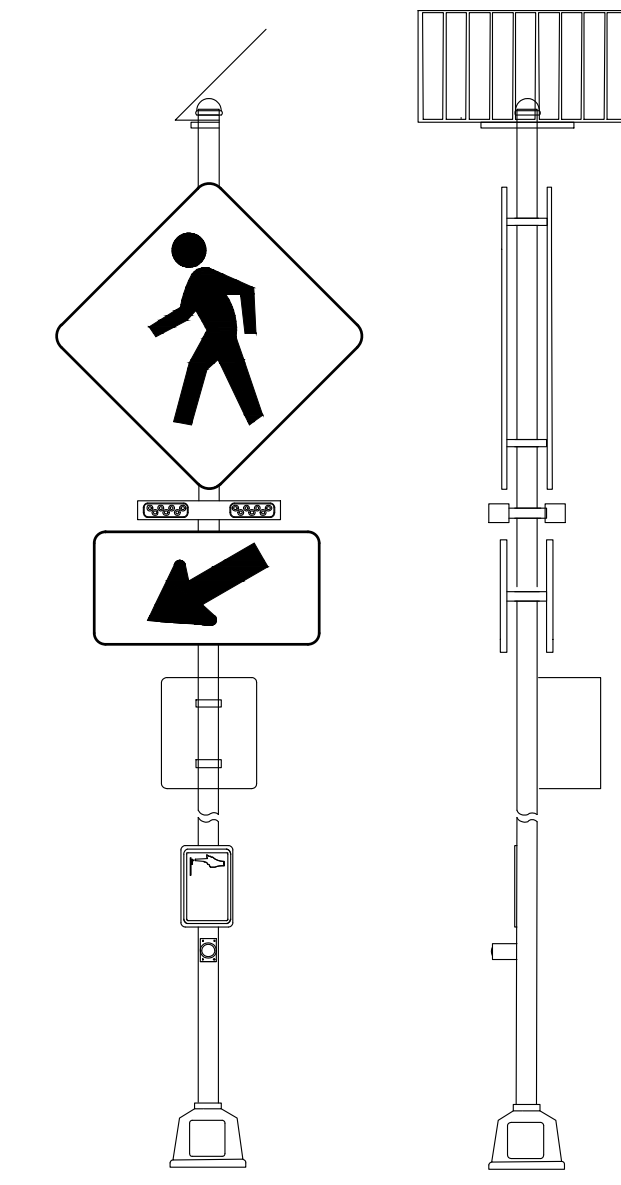
ITEM 630 SIGNING MISC.: SOLAR-POWERED RECTANGULAR RAPID FLASHING BEACON (RRFB) SIGN ASSEMBLY - CONTINUED

MEASUREMENT

THE DEPARTMENT WILL MEASURE THE ITEM COMPLETE IN PLACE, INCLUDING ALL MATERIALS, TESTING, LABOR AND SOFTWARE FOR A FULLY FUNCTIONAL UNIT.

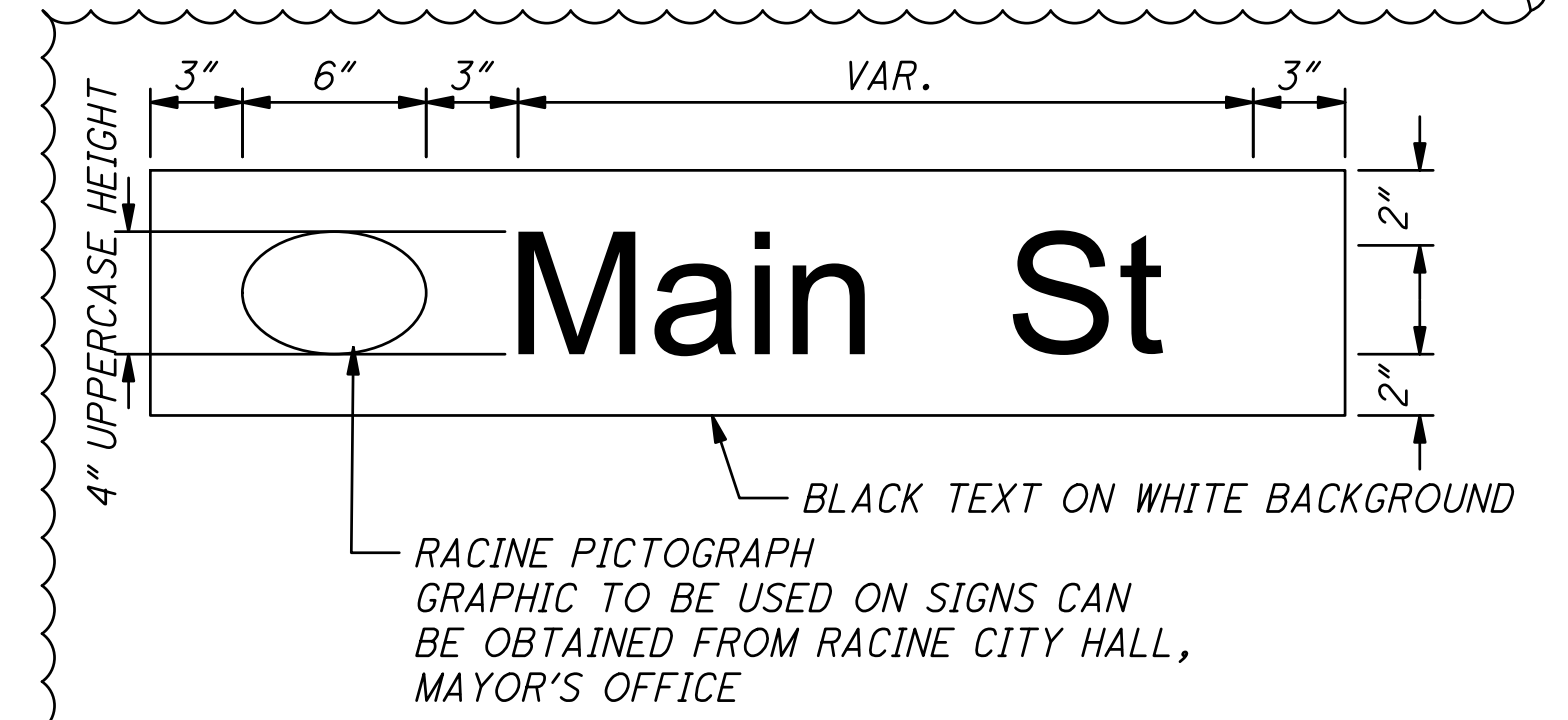
PAYMENT

PAYMENT WILL BE AT THE CONTRACT UNIT PRICE PER EACH FOR ITEM 630 "SIGNING MISC.: SOLAR POWERED RECTANGULAR RAPID FLASHING BEACON (RRFB) SIGN ASSEMBLY".



S-30, STA. 1008+43, 15.50' LT., CENTERLINE FIFTH ST. (S.R. 124)
 S-31, STA. 1008+57, 20.00' RT., CENTERLINE FIFTH ST. (S.R. 124).
 S-32, STA. 3010+97, 22.50' RT. CENTERLINE ELM ST.
 S-33, STA. 3011+33, 22.00' LT. CENTERLINE ELM ST.

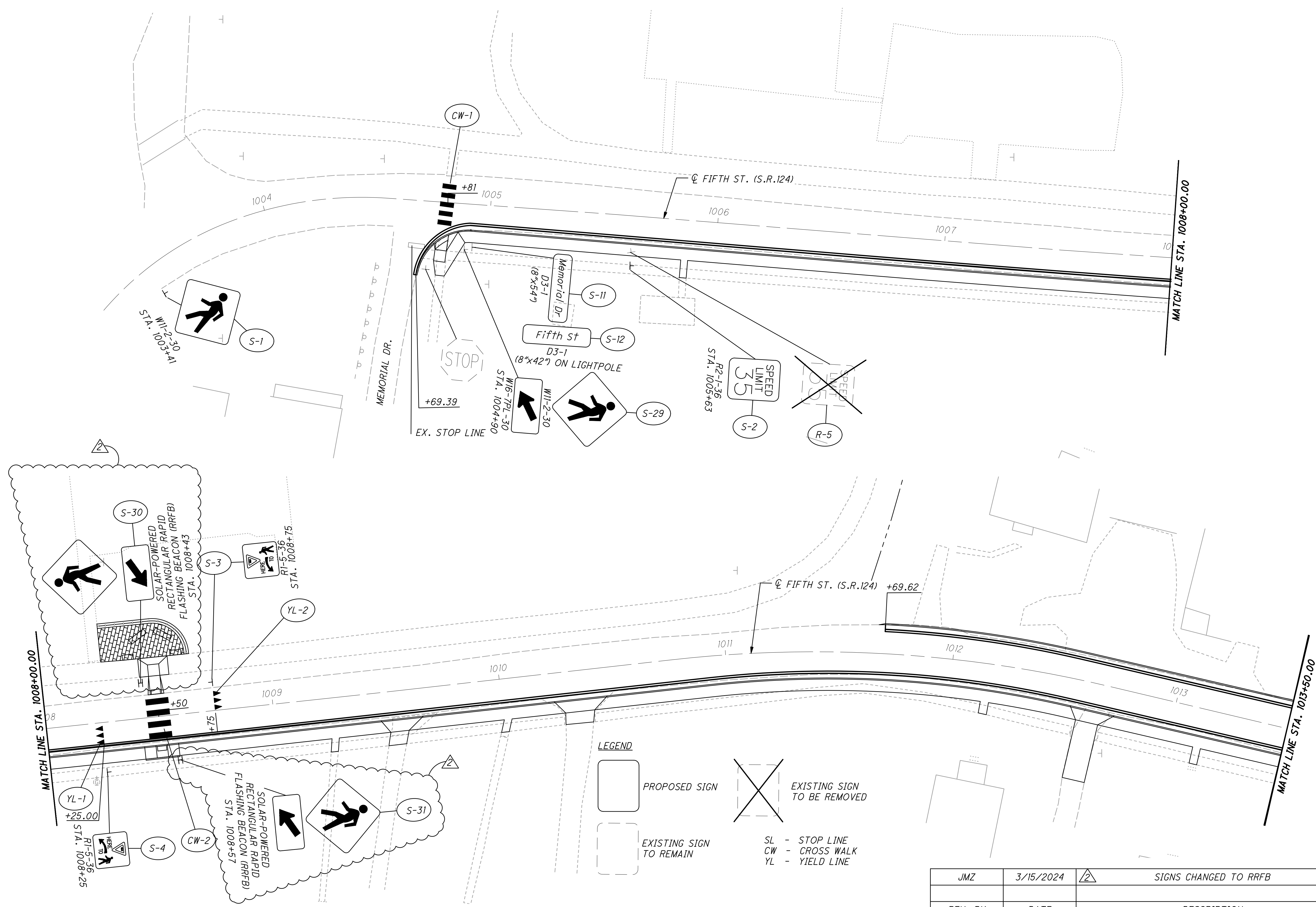
SOLAR-POWERED RECTANGULAR RAPID FLASHING BEACON (RRFB)
 W11-2-06
 RAPID FLASHING LED BAR
 W16-7PL-24
 SOLAR PANEL



STREET NAME SHEET SIZING

JMZ	3/15/2024	△	SIGNS CHANGED TO RRFB
REV. BY	DATE		DESCRIPTION

CALCULATED: CJK
 CHECKED: JMZ
 TRAFFIC CONTROL GENERAL NOTES
 MEG RACINE WALK/RIDE
 57
 73

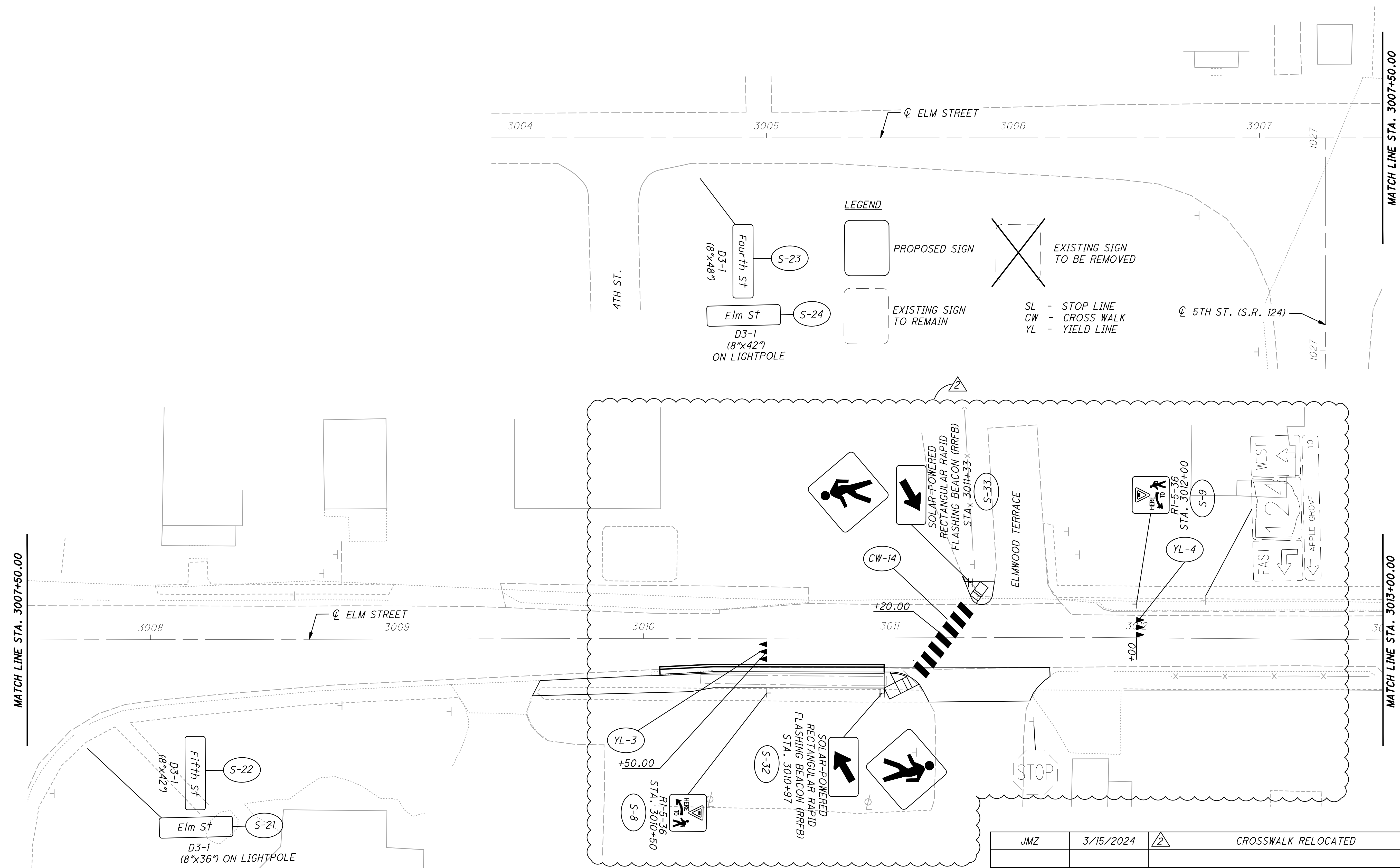


LEGEND

PROPOSED SIGN
 EXISTING SIGN TO REMAIN

 EXISTING SIGN TO BE REMOVED
 SL - STOP LINE
 CW - CROSS WALK
 YL - YIELD LINE

REV. BY	DATE	DESCRIPTION
JMZ	3/15/2024	⚠️ SIGNS CHANGED TO RRFB



LEGEND

- PROPOSED SIGN
- EXISTING SIGN TO REMAIN
- EXISTING SIGN TO BE REMOVED
- SL - STOP LINE
- CW - CROSS WALK
- YL - YIELD LINE

CALCULATED
 CJK
 CHECKED
 JMZ

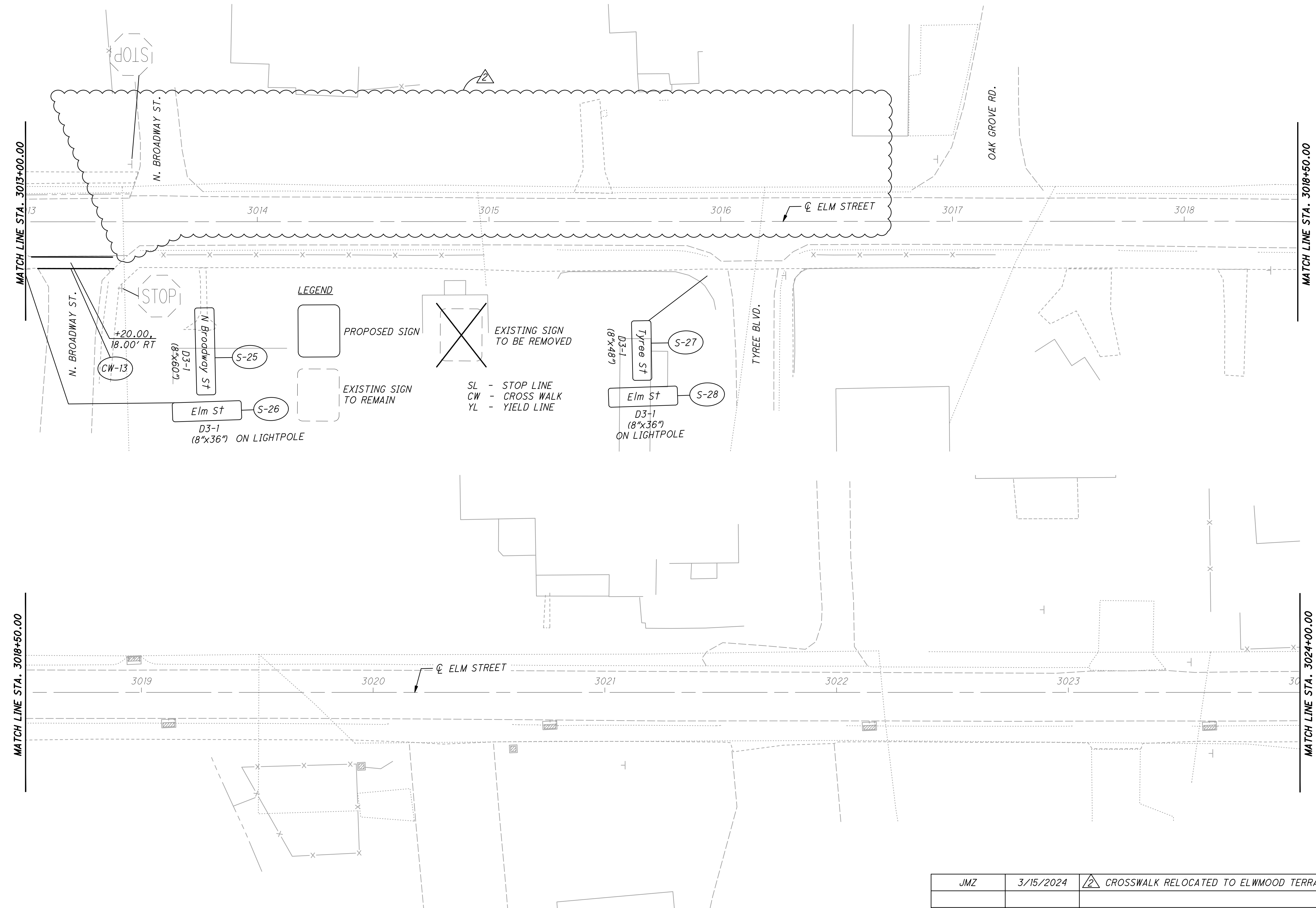
0 10 20 40
 HORIZONTAL
 SCALE IN FEET

SIGN AND PAVEMENT MARKING PLAN - ELM STREET
 STA. 3003+00.00 TO STA. 3013+00.00

MEG RACINE WALK/RIDE

REV. BY	DATE	DESCRIPTION
JMZ	3/15/2024	CROSSWALK RELOCATED

U:\Accounts\RAV\IO\RAV\IO22001 - MEG-Racine Walk_Ride\DESIGN\CT\ProjectData\115332\400-Engineering\Traffic\Sheets\115332_TP021.dwg, March 15, 2024_CKaragory



CALCULATED
CJL

CHECKED
JMZ

0 20 40
HORIZONTAL
SCALE IN FEET

SIGN AND PAVEMENT MARKING PLAN - ELM STREET
STA. 3013+00.00 TO STA. 3024+00.00

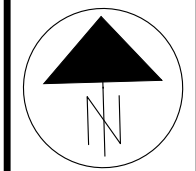
MEG RACINE WALK/RIDE

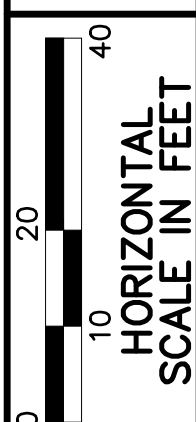
REV. BY	DATE	DESCRIPTION
JMZ	3/15/2024	CROSSWALK RELOCATED TO ELWMOOD TERRACE

U:\Accounts\RAV\IO\RAV\IO22001 - MEG-Racine Walk_Ride\DESIGN\CT\ProjectData\115332\400-Engineering\Lighting\Sheets\115332_LP020.dwg_March 15, 2024_CKaragory

JMZ	3/15/2024	△	CROSSWALK RELOCATED
REV. BY	DATE		DESCRIPTION

CROSS REFERENCES	
SHEET NO.	DESCRIPTION
67 - 69	5TH ST. LIGHTING PLANS





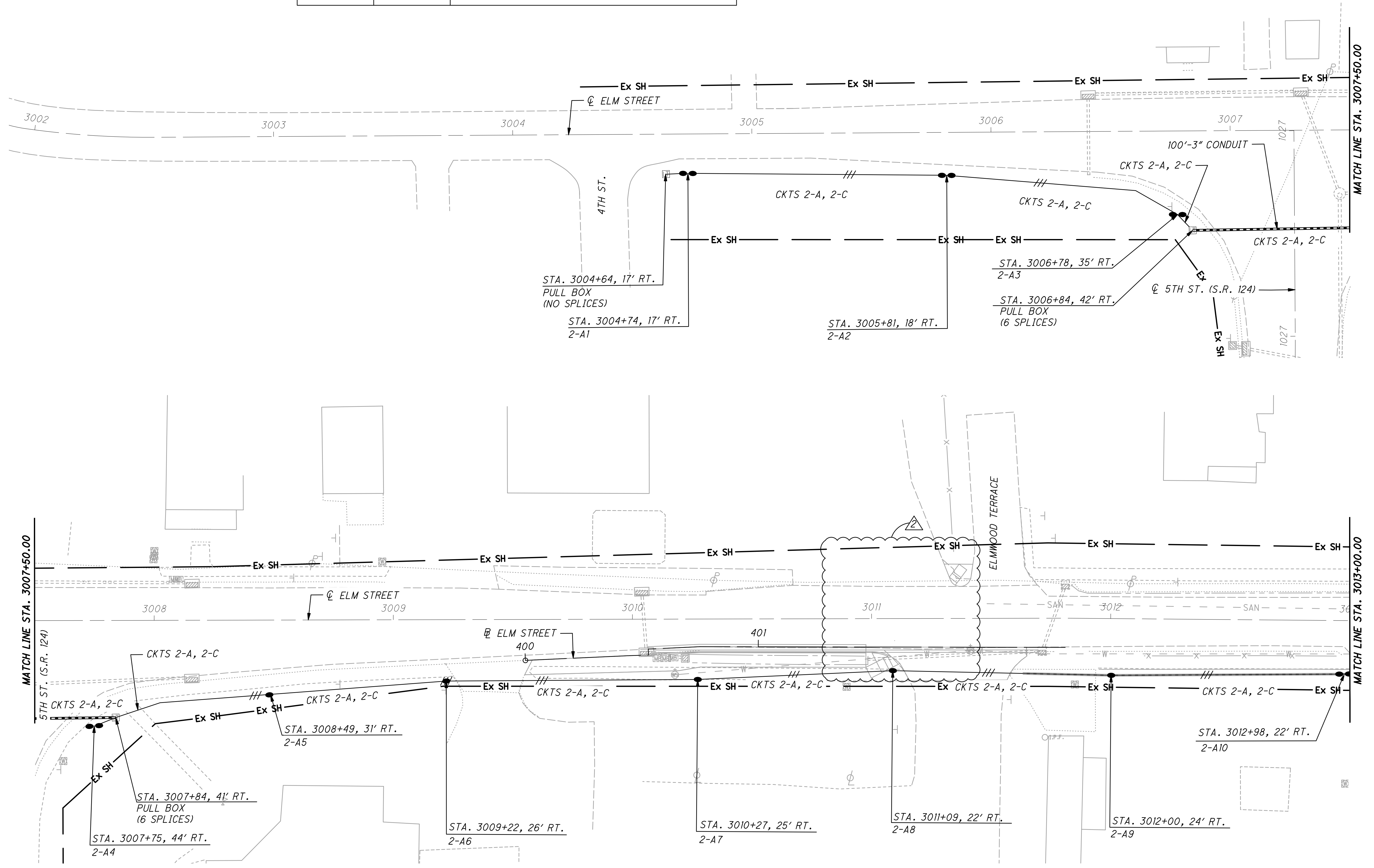
 HORIZONTAL SCALE IN FEET

CALCULATED	CJK
CHECKED	JMZ

LIGHTING PLAN - ELM STREET
 STA. 3002+00.00 TO STA. 3013+00.00

MEG RACINE WALK/RIDE

71
73

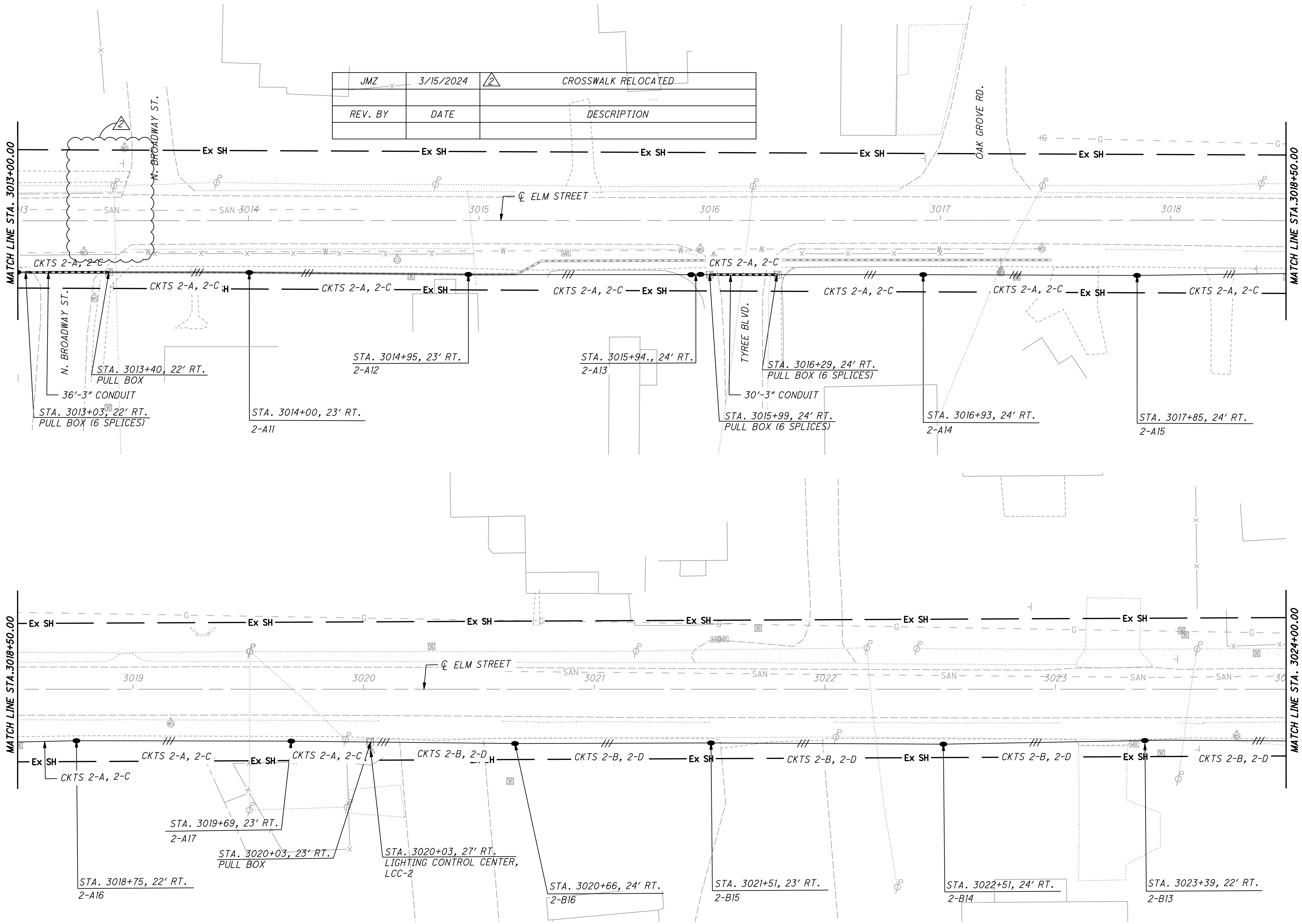


U:\Accounts\RAVIO\RAVIO22001 - MEG-Racine Walk_Ride\DESIGN\CT\ProjectData\115332\400-Engineering\Lighting\Sheets\115332_LP021.dwg_March 15, 2024_Tbennett

CALCULATED
 CUK
 CHECKED
 JMZ

0 10 20 40
 HORIZONTAL
 SCALE IN FEET

MEG RACINE WALK/RIDE
 LIGHTING PLAN - ELM STREET
 STA. 3013+00.00 TO STA. 3024+00.00



REV. BY	DATE	DESCRIPTION
JMZ	3/15/2024	CROSSWALK RELOCATED

