

ROADWAY SUBSUMMARY

REF.	SHEET	STATION TO STATION		SIDE	202	202	204	608	608	608
					PAVEMENT REMOVED	WALK REMOVED	SUBGRADE COMPACTION	4" CONCRETE WALK	CURB RAMP	DETECTABLE WARNING
					S.Y.	S.F.	S.Y.	S.F.	S.F.	S.F.
R-1	16	BOP	14+50	LT. & RT.		9,280	1031	9,280		
R-2	16	12+13	NA	LT.	21					
R-3	16	12+61	13+12	LT.					108	32
R-4	16	12+61	13+10	RT.					102	32
R-5	17	15+56	16+03	LT.					116	32
R-6	17	15+55	16+02	RT.					97	32
R-7	17	14+50	19+00	LT. & RT.		7,829	870	7,829		
R-8	17	17+39	NA	RT.	13					
R-9	17	18+45	19+03	LT.					114	35
R-10	17	18+49	19+04	RT.					90	32
R-11	18	19+00	EOP	LT. & RT.		4,607	512	4,607		
R-12	18	21+40	21+47	LT.					64	16
R-13	19	30+66	30+73	LT.					34	8
R-14	19	BOP	34+50	LT. & RT.		1,236	137	1,236		
R-15	19	33+77	33+83	LT.					32	8
R-16	20	37+35	NA	RT.	8					
R-17	20	34+50	39+00	RT.		1,699	189	1,699	88	16
R-18	20	38+78	NA	RT.	11					
R-19	21	39+21	NA	RT.	22					
R-20	21	39+59	NA	RT.	12					
R-21	21	40+74	NA	RT.	12					
R-22	21	41+52	41+96	RT.					80	16
R-23	21	39+00	43+50	RT.		1,598	178	1,598		
R-24	21	42+52	NA	RT.	9					
R-25	21	43+41	NA	RT.	8					

R-26	22	43+50	48+00	RT.		1,256	140	1,256		
R-27	22	45+32	NA	RT.	8					
R-28	22	45+94	NA	RT.	10					
R-29	22	46+71	46+74	RT.					28	8
R-30	24	52+50	EOP	RT.		1,703	189	1,703		
R-31	24	54+51	54+57	RT.					32	8
R-32	25	50+82	50+92	LT.					92	8
R-33	25	51+29	NA	RT.	11					
R-34	25	51+35	NA	LT.	46					
R-35	25	53+31	NA	LT.	28					
R-36	25	BOP	54+50	LT. & RT.		3,281	365	3,281		
R-37	25	53+67	54+08	LT.					64	24
R-38	25	53+68	54+13	RT.					70	24
R-39	26	55+37	NA	RT.	11					
R-40	26	56+01	NA	RT.	17					
R-41	26	54+50	59+00	LT. & RT.		4,095	455	4,095		
R-42	26	57+61	NA	RT.	25					
R-43	26	58+21	NA	LT.	17					
R-44	27	59+10	NA	RT.	17					
R-45	27	59+46	NA	LT.	12					
R-46	27	60+17	NA	LT.	13					
R-47	27	60+23	NA	RT.	15					
R-48	27	60+79	NA	RT.	12					
R-49	27	59+00	63+50	LT. & RT.		3,502	389	3,502		
R-50	27	61+51	61+61	LT.					120	36
R-51	27	61+51	61+62	RT.					68	16
R-52	28	64+54	NA	LT.	24					
R-53	28	63+50	68+00	LT. & RT.		2,001	222	2,001		
R-54	28	65+60	NA	LT.	15					
R-55	28	66+69	67+23	LT.					94	32
SUBTOTAL					397	42,087	4,676	42,087	1493	415

J:\145052_MEG_Sidewalk\7.0_Production\7.03_Design\04_Civil\Sheets\145052_GENERAL_SUMMARY.dwg 05-Sep-24 4:13 PM

DESIGN AGENCY
 IBI GROUP
 4100 Old Village Street - Suite 104
 Canton OH 44705 USA
 tel 330 491 9000 fax 330 491 9001
 ibigroup.com

CALCULATED
 JAG
 CHECKED
 MSM

SUBSUMMARY - ROADWAY

MEG - MIDDLEPORT STREETSCAPE
 PHASE 1

J:\145052_MEG_Sidewalk\7.0_Production\7.03_Design\04_Civil\Sheets\145052_GENERAL_SUMMARY.dwg 05-Sep-24 4:13 PM

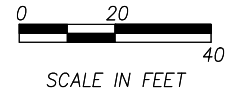
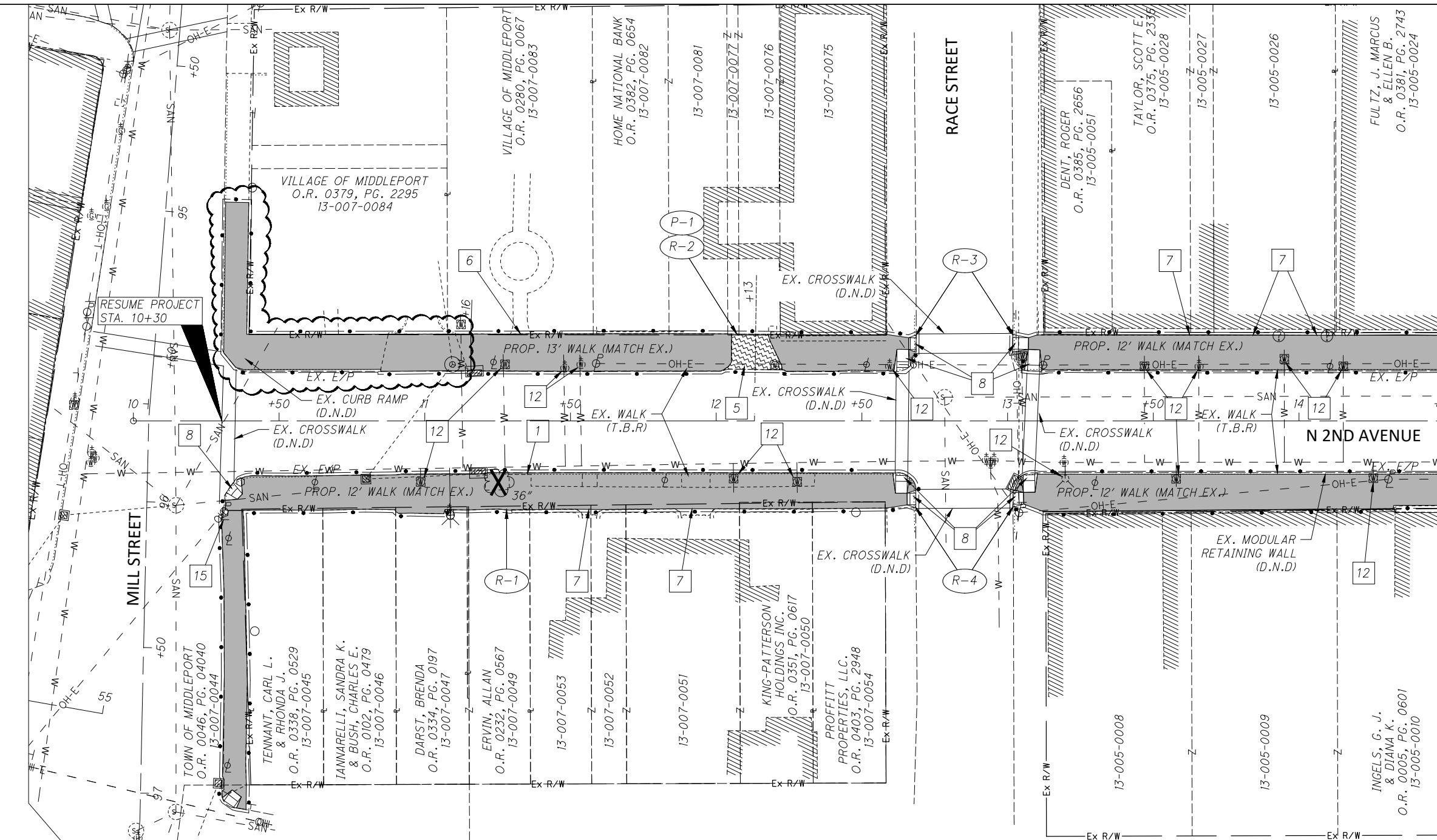
SHEET NUM.										PART.	ITEM	ITEM	GRAND	UNIT	DESCRIPTION	SEE SHEET NO.	
10	11	12	13	42						01/ENH/28		EXT					
										LS	201	11000	LS		ROADWAY		
3										3	201	26510	3	EACH	CLEARING AND GRUBBING		
1										1	201	26520	1	EACH	STUMP REMOVED, 30"	10	
	397	223								620	202	23000	620	SY	PAVEMENT REMOVED		
	42,087	17,099								59,186	202	30000	59,186	SF	WALK REMOVED		
1,755										1,755	202	98400	1,755	SF	REMOVAL MISC.:BRICK PAVERS	10	
	4,522	1,900	622							7,044	204	10000	7,044	SY	SUBGRADE COMPACTION		
800										800	602	97000	800	SF	MASONRY, MISC.: FALSEWORK AND FORMING FOR BASEMENT VOIDS	10	
	42,087	17,099								59,186	608	10000	59,186	SF	4" CONCRETE WALK		
200										200	608	40001	200	FT	CONCRETE STEPS, TYPE A, AS PER PLAN	10	
	1,493	950								2,443	608	52000	2,443	SF	CURB RAMP		
	415	286								701	608	53020	701	SF	DETECTABLE WARNING		
300										300	613	41300	300	CY	LOW STRENGTH MORTAR BACKFILL (TYPE 2)	10	
1,485										1,485	SPECIAL	53050010	1,485	SF	RETAINING WALL REMOVED AND REPLACED	10	
															PAVEMENT		
2										2	304	20000	2	CY	AGGREGATE BASE	10	
1										1	441	50000	1	CY	ASPHALT CONCRETE SURFACE COURSE, TYPE 1, (448), PG64-22	10	
1										1	441	50200	1	CY	ASPHALT CONCRETE INTERMEDIATE COURSE, TYPE 1, (448)	10	
			622							622	452	11010	622	SY	7" NON-REINFORCED CONCRETE PAVEMENT, CLASS QC 1P		
30										30	609	18001	30	FT	COMBINATION CURB AND GUTTER, TYPE 3, AS PER PLAN	10	
200										200	609	26001	200	FT	CURB, TYPE 6, AS PER PLAN	10	
															DRAINAGE		
5										5	611	01800	5	FT	8" CONDUIT, TYPE B	10	
10										10	611	04400	10	FT	12" CONDUIT, TYPE B	10	
1										1	611	99575	1	EACH	MANHOLE, NO. 3, AS PER PLAN	10	
															EROSION CONTROL		
2,511										2,511	659	00500	2,511	SY	SEEDING AND MULCHING, CLASS 1		
126										126	659	14000	126	SY	REPAIR SEEDING AND MULCHING		
0.34										0.34	659	20000	0.34	TON	COMMERCIAL FERTILIZER		
7										7	659	35000	7	MGAL	WATER		
10,000										10,000	832	30000	10,000	EACH	EROSION CONTROL		
															TRAFFIC CONTROL		
200										200	630	03100	200	FT	GROUND MOUNTED SUPPORT, NO. 3 POST	10	
20										20	630	85100	20	EACH	REMOVAL OF GROUND MOUNTED SIGN AND REERECTION	10	
20										20	630	86002	20	EACH	REMOVAL OF GROUND MOUNTED POST SUPPORT AND DISPOSAL	10	
															WATER WORK		
1										1	638	10500	1	EACH	FIRE HYDRANT REMOVED AND RESET	10	
5										5	638	10800	5	EACH	VALVE BOX ADJUSTED TO GRADE	10	
25										25	638	10900	25	EACH	SERVICE BOX ADJUSTED TO GRADE	10	

DESIGN AGENCY
 IBI GROUP
 41000 Village Street - Suite 104
 Canton OH 44718 USA
 tel: 330.491.9000 fax: 330.491.9001
 ibigroup.com

CALCULATED
 JAG
 CHECKED
 MSM

GENERAL SUMMARY

MEG - MIDDLEPORT STREETSCAPE
 PHASE 1



- LEGEND**
- PROPOSED 4" CONCRETE WALK
 - PROPOSED CONSTRUCTION LIMITS
 - EXISTING DRIVE APRON (TO BE REPLACED)
 - EXISTING CURB RAMP (SEE CODED NOTE #9)
 - X EXISTING STUMP OR TREE TO BE REMOVED (T.B.R.)
 - PROPOSED LIGHT POLE

NOTE

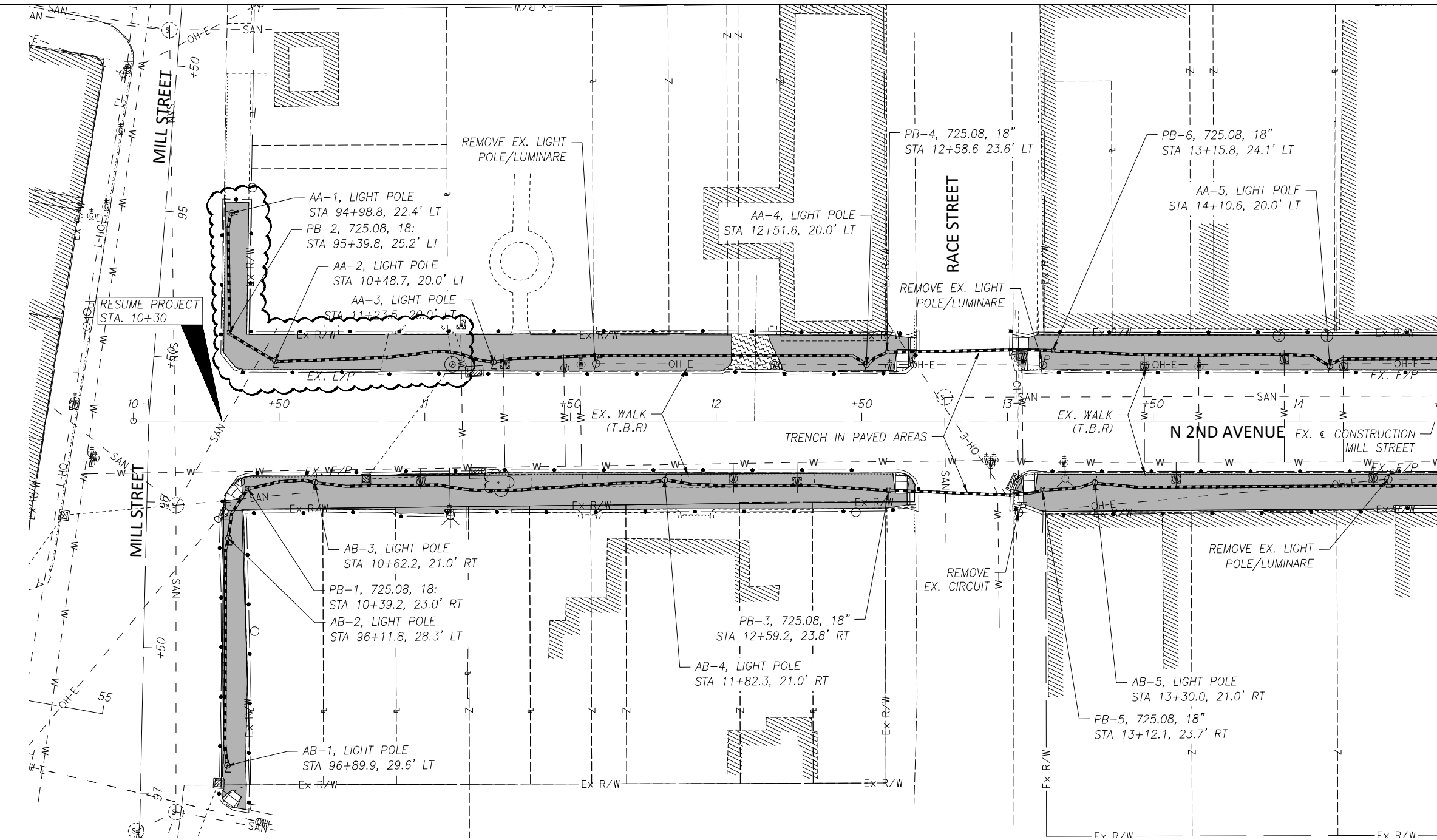
A. CONTRACTOR TO COORDINATE REMOVAL OF EXISTING FLOWER PLANTERS, AND OTHER TEMPORARY APPURTENANCES WITH VILLAGE STAFF PRIOR TO COMMENCING WORK.

VILLAGE STAFF WILL REMOVE, STORE, AND RESET AT THE CONCLUSION OF CONSTRUCTION.

- CODED NOTES**
- 1 CONTRACTOR TO REMOVE AND REPLACE ENTIRE SERVICE WALK (FROM BACK OF CURB TO FACE OF WALK) TO MEET PROPOSED WALK
 - 2 CONTRACTOR TO REMOVE EX. BRICK AND REPLACE WITH PROPOSED SIDEWALK
 - 3 CONTRACTOR TO MEET EX. RAMP AT EXISTING ELEVATION
 - 4 PROP CURB RAMP PER ODOT STD. DWG. BP-7.1
 - 5 EX. DRIVE APRON AND APPROACH TO BE REMOVED AND REPLACED
 - 6 TIE INTO EX. PRIVATE CONCRETE SERVICE WALK ELEVATION AT BACK OF WALK
 - 7 EXISTING STEPS DO NOT DISTURB. PROPOSED SIDEWALK TO MEET EX. STEP ELEVATION
 - 8 REMOVE AND REPLACE CURB RAMP PER ODOT STD. DWG. BP-7.1
 - 9 CONTRACTOR TO TIE INTO EX. CURB RAMP
 - 10 EXISTING LANDSCAPING AREA, DO NOT DISTURB
 - 11 EXISTING SIGN, REMOVE AND RESET
 - 12 EXISTING WATER VALVE BOX OR SERVICE BOX ADJUSTED TO GRADE, OR F.H. TO BE REMOVED AND RESET
 - 13 EXISTING RETAINING WALL ADJACENT TO WALK, DO NOT DISTURB (SEE SHEET 10 FOR ADDITIONAL INFORMATION INCLUDING SAWCUT DETAILS)
 - 14 EXISTING SIGN, DO NOT DISTURB
 - 15 EXISTING UTILITY POLE, DO NOT DISTURB
 - 16 CONTRACTOR TO TRANSITION PROPOSED WALK TO MEET EXISTING BRICK WALK

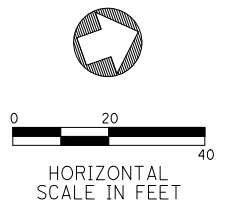
MATCHLINE STA 14+50 (SEE SHEET 17)

DESIGN AGENCY: IBI GROUP, 41500 Village Street - Suite 104, Canton, OH 44705 USA, Tel: 330 491 9000 Fax: 330 491 9001
 CALCULATED: JAG
 CHECKED: MSM
 N 2ND AVENUE PLAN SHEET BEGIN - STA 14+50
 MEG - MIDDLEPORT STREETSCAPE PHASE 1
16
46



MATCHLINE STA 14+50 (SEE SHEET 44)

- LEGEND**
- PROPOSED 4" CONCRETE WALK
 - PROPOSED CONSTRUCTION LIMITS
 - EXISTING DRIVE APRON (TO BE REPLACED)
 - EXISTING CURB RAMP (SEE NOTE BELOW)
 - X EXISTING TREE TO BE REMOVED (T.B.R.)
 - ϕ PROPOSED POST TOP LIGHT POLE, W/ LED LUMINAIRE
 - ⊞ PROPOSED LIGHTING PULL BOX, 725.08
 - PROPOSED LIGHTING 2" CONDUIT, 725.04 W/ 3-NO. 6 AWG 2400 VOLT DISTRIBUTION CABLES
 - △ PROPOSED LIGHTING CONTROL CABINET (120 / 240V, 3-WIRE, SINGLE PHASE SERVICE)
 - △ LIGHT POLE DESIGN NUMBER (AB-1: CONTROL CENTER, CIRCUIT NO. - POLE NO.)



<p>DESIGN AGENCY IBI GROUP 41000 Village Street - Suite 104 Canton OH 44718 USA tel 330 491 9000 fax 330 491 9001 ibigroup.com</p>	<p>IBI</p>
<p>CALCULATED JAG</p> <p>CHECKED MSM</p>	<p>LIGHTING PLAN - N 2ND AVENUE</p>
<p>MEG - MIDDLEPORT STREETSCAPE PHASE 1</p>	
<p>43 46</p>	