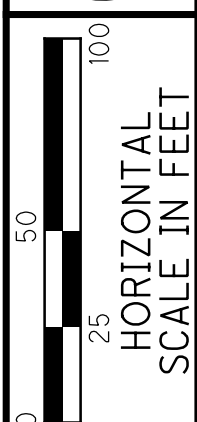
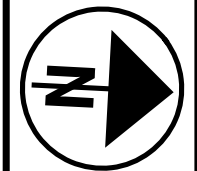


P:\CTC\TR\0001_MIA-CR25A\103159\Design\Roadway\Sheets\103159_DS001.dgn Sheet 4/22/2021 2:00:48 PM backel

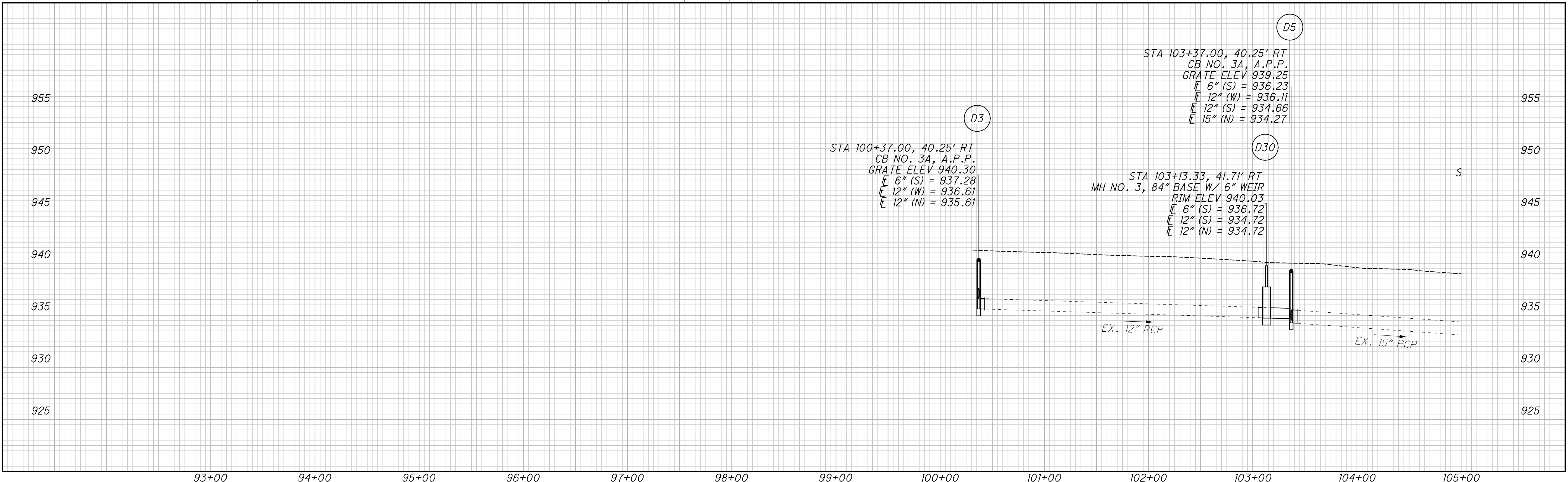
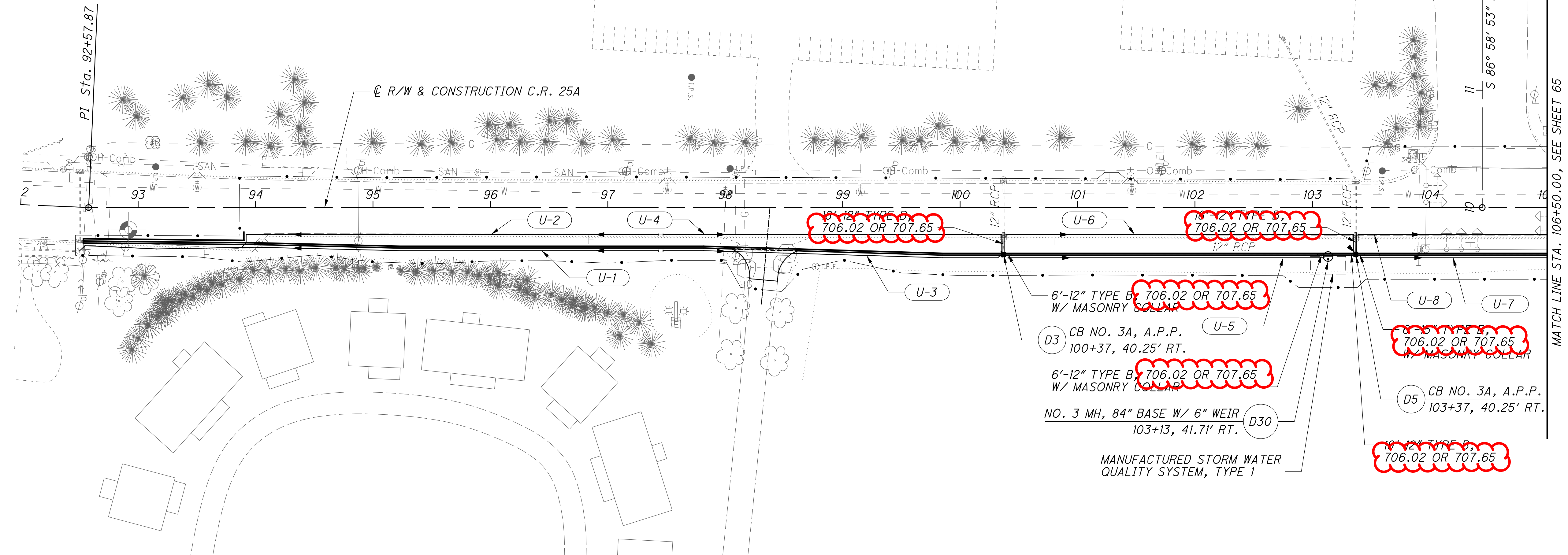
REF NO.	SHEET NO.	STATION TO STATION			SIDE	602	602	611	611	611	611	611	611	611	611	611	895	605	611	611					
						CONCRETE MASONRY CY	CONCRETE MASONRY, AS PER PLAN CY	12" CONDUIT, TYPE B, 706.02 or 707.65 FT	12" CONDUIT, TYPE C, 706.02 or 707.65 FT	15" CONDUIT, TYPE B, 706.02 or 707.65 FT	18" CONDUIT, TYPE B, 706.02 or 707.65 FT	24" CONDUIT, TYPE B, 706.02 or 707.65 FT	CATCH BASIN, NO. 3, AS PER PLAN EACH	CATCH BASIN, NO. 3A, AS PER PLAN EACH	MANHOLE, NO. 3 EACH	MANHOLE, NO. 3 WITH 84" BASE I.D. AND 6" WEIR EACH	48" X 33" CONDUIT, TYPE A, 706.04 FT	CATCH BASIN ADJUSTED TO GRADE EACH	MANUFACTURED WATER QUALITY STRUCTURE, TYPE 1 EACH	6" BASE PIPE UNDERDRAINS FT	6" CONDUIT, TYPE F FOR UNDERDRAIN OUTLETS FT	PRECAST REINFORCED CONCRETE OUTLET EACH			
D-3	32	100+37.00	TO	103+37.00	RT			24							1										
D-5	33	103+37.00	TO	106+37.00	RT			18		6					1										
D-7	34	106+37.00	TO	109+37.00	RT			17		12					1										
D-9	34	109+37.00	TO	112+37.00	RT			18		10		14			1										
D-11	35	112+37.00	TO	115+37.00	RT			18				40			1										
D-13	35	115+37.00	TO	8+98.00	RT			18				22	191		1										
D-15	36	8+98.00	TO	9+09.00	RT								51	1											
D-16	36	10+68.58			RT																1				
D-20	36	9+09.00	TO	10+49.00	LT	0.51		4					153												
D-21	36	8+89.00	TO	8+98.00	RT					16				1											
D-23	35	115+00.00	TO	115+37.00	RT	0.31				40															
D-25	36	9+92.00	TO	10+32.00	RT	0.31		6		40				1											
D-26	36	10+49.00	TO	10+49.00	RT	1.34	2.4																		
D-30	33	103+13.30	TO	103+13.30	RT			25																	
U-1	64	92+51.00	TO	97+43.00	RT																				
U-2	64	93+88.00	TO	97+43.00	RT																	495	10		
U-3	64	97+47.00	TO	100+36.00	RT																	364	10		
U-4	64	97+47.00	TO	100+36.00	RT																	290	10		
U-5	64	100+41.00	TO	103+10.00	RT																	304	10		
U-6	64	100+39.00	TO	103+35.00	RT																	270	10		
U-7	64-65	103+41.00	TO	103+36.00	RT																	312	10		
U-8	64-65	103+39.00	TO	106+35.00	RT																	296	10		
U-9	65	106+41.00	TO	109+36.00	RT																	312	10		
U-10	65	106+39.00	TO	109+35.00	RT																	296	10		
U-11	65	109+41.00	TO	112+35.00	RT																	312	10		
U-12	65	109+39.00	TO	112+35.00	RT																	296	10		
U-13	65	112+41.00	TO	115+36.00	RT																	312	10		
U-14	65	112+39.00	TO	115+36.00	RT																	296	10		
U-15	65-66	115+41.00	TO	8+95.00	RT																	312	10		
U-16	65-66	115+39.00	TO	8+97.00	RT																	188	10		
U-17	66	10+02.00	TO	10+42.00	LT																	204	10		
U-18	66	9+93.00	TO	10+48.00	RT																	82	10	1	
U-19	66	10+65.00	TO	15+00.00	RT																	66	10		
U-20	66	10+65.00	TO	15+00.00	RT																	436	10		
TOTALS TO GENERAL SUMMARY						3	3	148	96	28	76	395	3	6	1	1	13	1	1		5918	200	2		

<p>DRAINAGE SUBSUMMARY</p>	<p>MIA - C.R. 25A - 3.54</p>
<p>CALCULATED DMG CHECKED MDW</p>	<p>26 91</p>

NOTES
SEE SHEET 67 FOR ADDITIONAL PROFILES.



CALCULATED
BAA
CHECKED
MDW

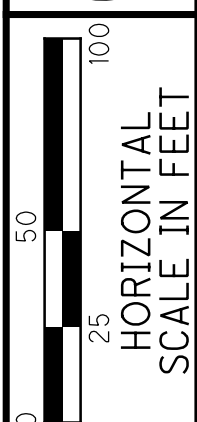
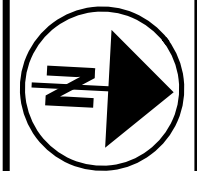
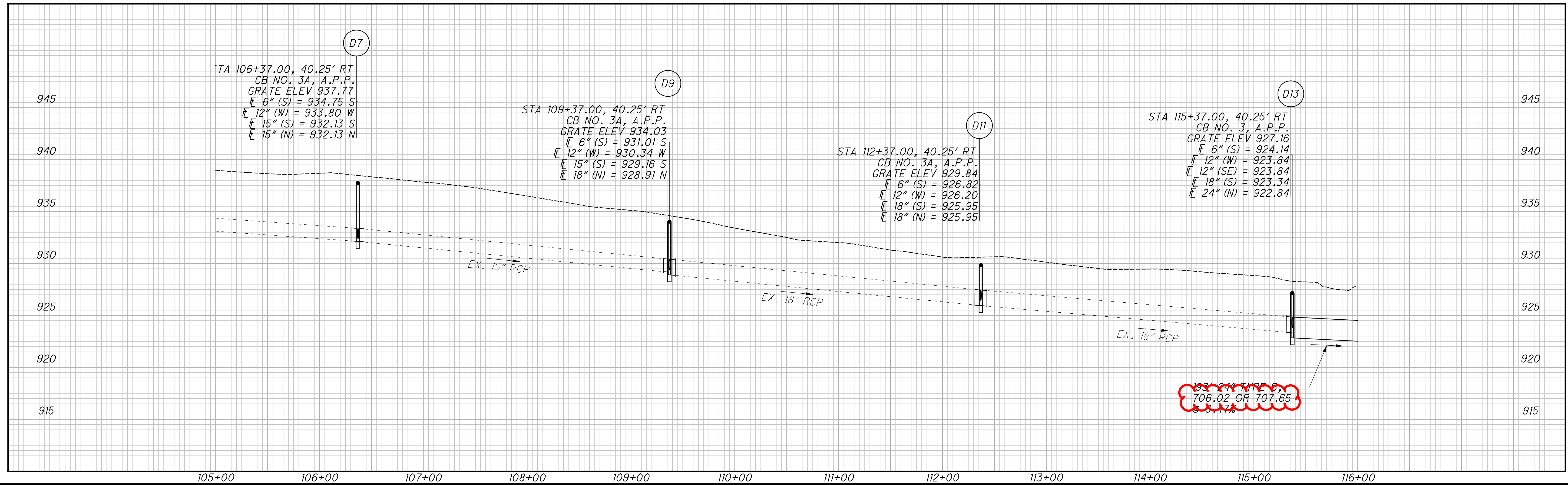
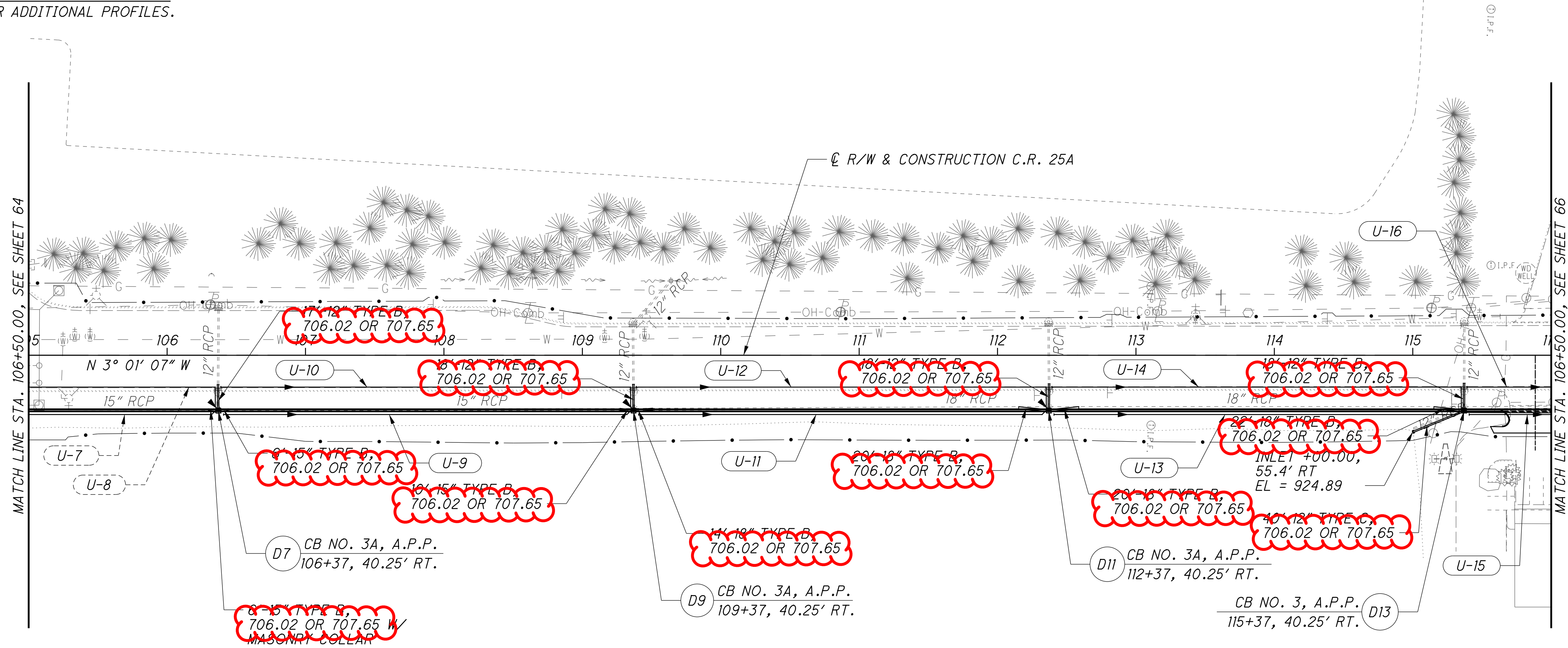


DRAINAGE PLAN AND PROFILE
STA. 92+00 TO STA. 105+00

MIA - C.R. 25A - 3.54

P:\CTC\TR\0001_MIA-CR25A\103159\Design\Roadway\Sheets\103159_DF001.dgn Sheet 4/22/2021 2:00:50 PM backel

NOTES
SEE SHEET 67 FOR ADDITIONAL PROFILES.



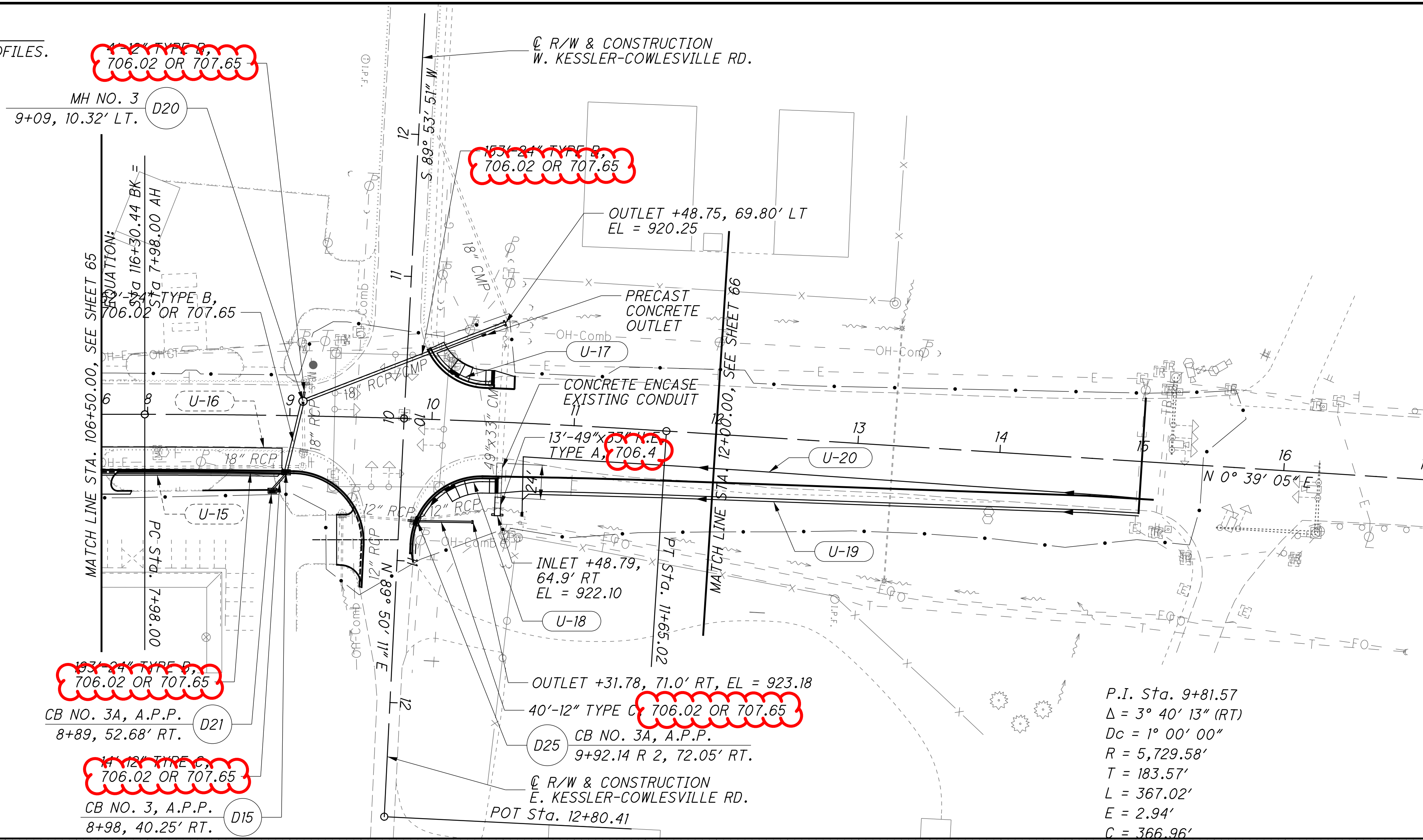
CALCULATED
BAA
CHECKED
MDW

DRAINAGE PLAN AND PROFILE
STA. 105+00 TO STA. 116+00

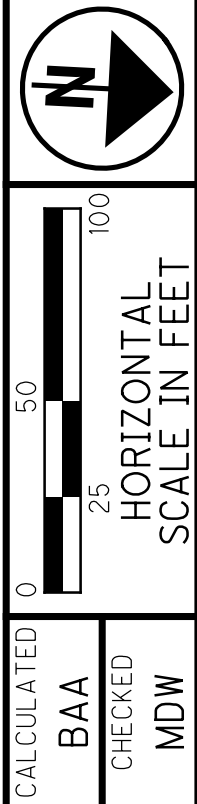
MIA - C.R. 25A - 3.54

P:\CTC\TR\0001_MIA-CR25A\103159\Design\Roadway\Sheets\103159_DF002.dgn Sheet 4/22/2021 2:00:52 PM beckel

NOTES
SEE SHEET 67 FOR ADDITIONAL PROFILES.



P.I. Sta. 9+81.57
 $\Delta = 3^\circ 40' 13" (RT)$
 $D_c = 1^\circ 00' 00"$
 $R = 5,729.58'$
 $T = 183.57'$
 $L = 367.02'$
 $E = 2.94'$
 $C = 366.96'$



DRAINAGE PLAN AND PROFILE
STA. 116+00 TO STA. 17+00

MIA - C.R. 25A - 3.54

P:\CTC\TR\0001_MIA-CR25A\103159\Design\Roadway\Sheets\103159_DF003.dgn Sheet 4/22/2021 2:00:53 PM bockel

