

NORTHGATE COMMERCE CENTER TIPP CITY, OHIO

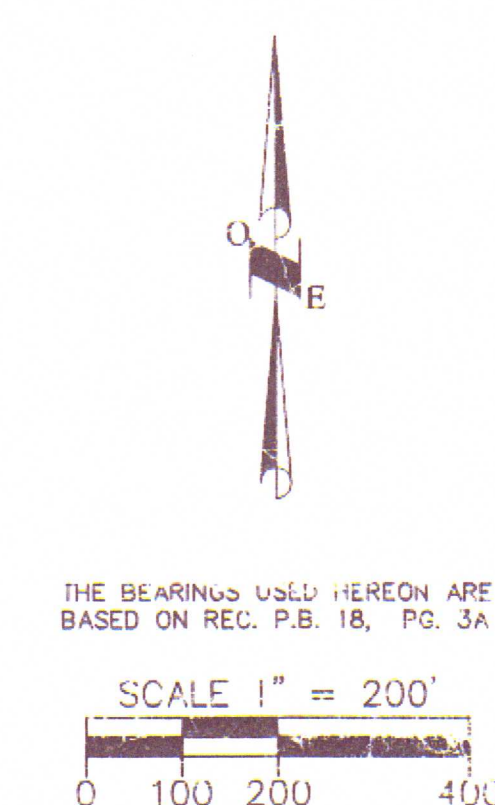
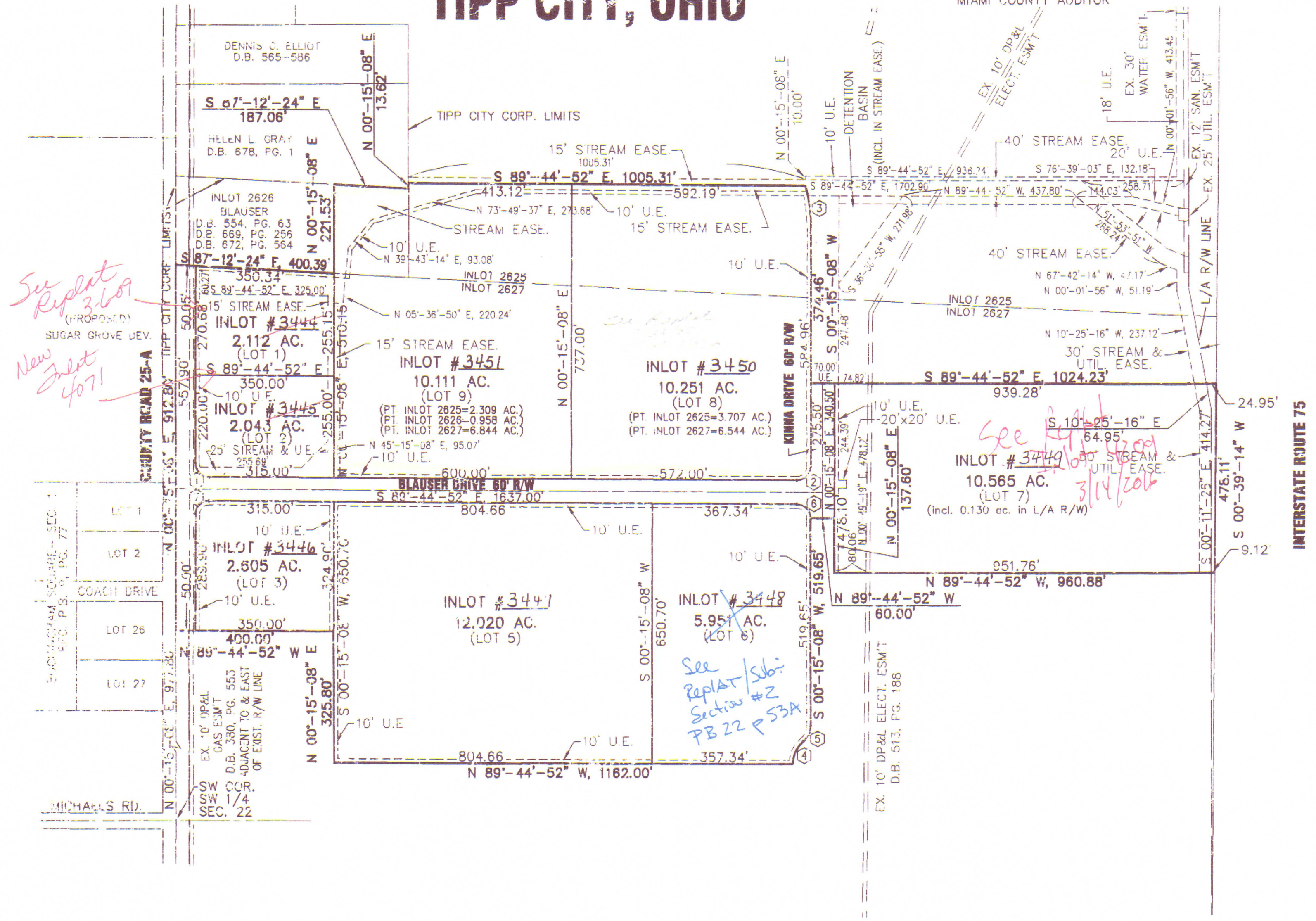
TRANSFERRED THIS 27 DAY OF April 2000
Chris A. Peoples
 CHRIS A. PEEPLES
 MIAMI COUNTY AUDITOR

PLAT BOOK 18, PAGE 144
 MIAMI COUNTY RECORDER'S RECORD
 OF PLATS
 RECEIVED FOR RECORD THIS 27th DAY
 OF APRIL, 2000, AT 3:21 P.M.

FILE No. 0287282 FEE: \$21.60

John W. O'Brien
 JOHN W. O'BRIEN MIAMI COUNTY RECORDER

Angela Hall
 DEPUTY



THE BEARINGS USED HEREON ARE
 BASED ON REC. P.B. 18, PG. 3A

- LEGEND**
- IRON PIN FOUND
 - 5/8" X 30" REBAR W/CAP TO BE SET
 - ⊙ CONCRETE MONUMENT FOUND
- BUILDING SETBACK LINES TO BE ESTABLISHED AS PER TIPP CITY ZONING REGULATIONS

DESCRIPTION

BEING A COMMERCIAL AND INDUSTRIAL SUBDIVISION CONTAINING A TOTAL OF 59.341 ACRES OUT OF INLOT NUMBER 2625, INLOT NUMBER 2626 AND INLOT NUMBER 2627 IN THE CITY OF TIPP CITY, OHIO AS SHOWN ON THE MIAMI COUNTY RECORDER'S RECORD OF PLATS VOLUME 15, PAGE 90, WITH 6.016 ACRES OUT OF INLOT NUMBER 2625, 0.958 ACRES OUT OF INLOT NUMBER 2626 AND 52.367 ACRES OUT OF INLOT NUMBER 2627 AND 3.683 ACRES BEING DEDICATED AS STREET RIGHT-OF-WAY.

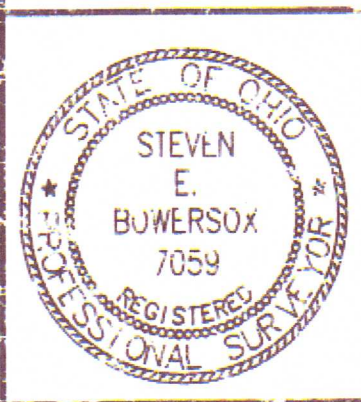
CURVE TABLE					
CURVE NUMBER	RADIUS	Δ	ARC LENGTH	CHORD LENGTH	CHORD BEARING
1	35.00	90°-00'-00"	54.98'	49.50'	S 44°-44'-52" E
2	35.00	90°-00'-00"	54.98'	49.50'	N 45°-15'-08" E
3	470.00	14°-25'-13"	118.29'	117.98'	S 06°-57'-28" E
4	75.00	50°-12'-29"	65.72'	63.64'	S 25°-21'-23" W
5	50.00	50°-12'-29"	43.81'	42.43'	S 25°-21'-23" W
6	35.00	90°-00'-00"	54.98'	49.50'	N 44°-44'-52" W
7	35.00	90°-00'-00"	54.98'	49.50'	S 45°-15'-08" W

UTILITY EASEMENTS
 UTILITY EASEMENTS ARE AS SHOWN HEREON. UTILITY EASEMENTS ARE CENTERED ON INTERIOR LOT LINES, UNLESS OTHERWISE SHOWN.

I HEREBY STATE THAT THIS PLAT IS A TRUE REPRESENTATION OF THE RESULTS OF AN ACTUAL SURVEY MADE UNDER MY DIRECTION AND THAT 5/8" X 30" IRON PINS W/CAPS WILL BE SET AT ALL LOT CORNERS AND POINTS OF CURVATURE ALONG THE STREET RIGHT-OF-WAYS UPON COMPLETION OF INSTALLATION OF THE UTILITIES AND STREETS.

Steven E. Bowersox
 STEVEN E. BOWERSOX, P.S. #7059

12-20-1999
 DATE



CHOICE ONE ENGINEERING
 the choices that exceeds ...
 440 HOEWISHER ROAD
 SIDNEY, OHIO 45366
 (937) 497-0200 • FAX (937) 497-0300
 www.choiceoneengineering.com

date: 12-20-99
 drawn by: seb
 job number: MITc9908