

N

BEARINGS ARE BASED ON MEJER DC 800, PLAT BOOK 17, PAGE 29

CORPORATION CITY OF TIPP CITY

SECTION 16

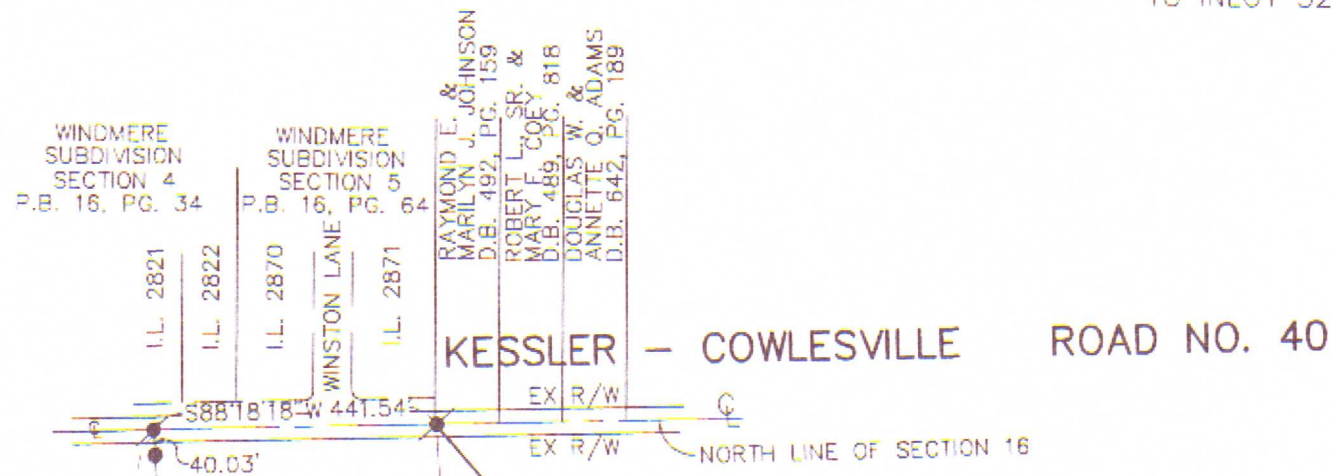
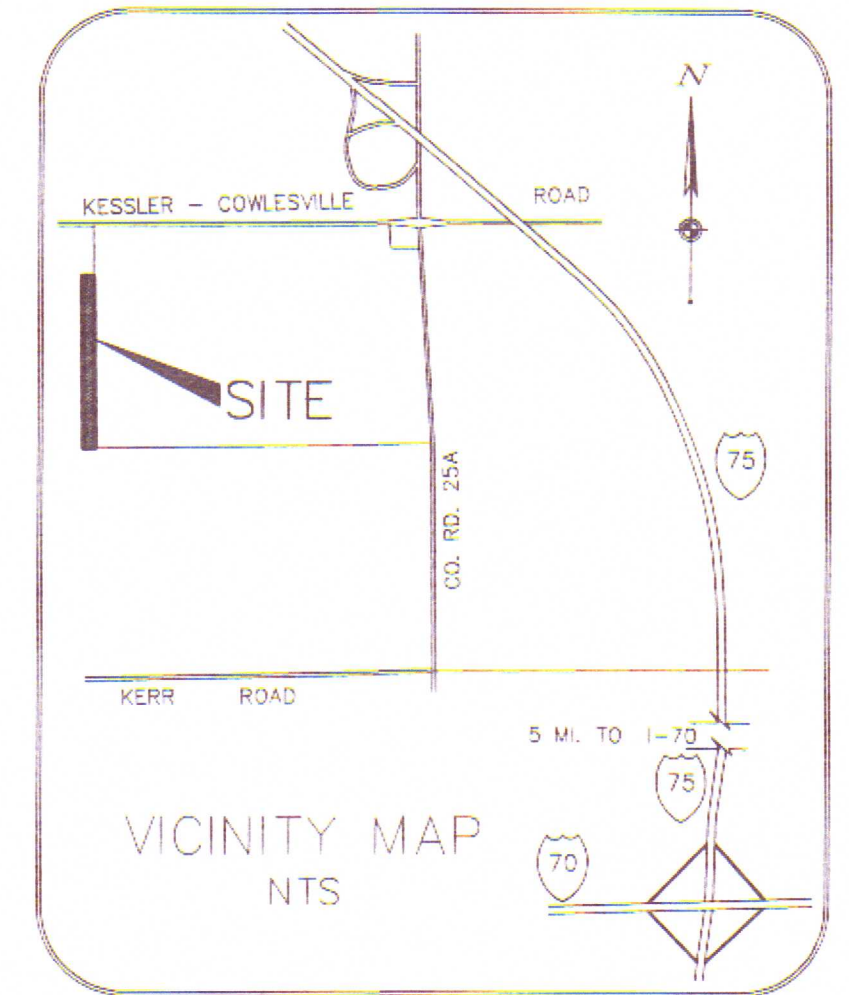
INLOT PART OF 2392

VOLUME 21 PAGE 178 MIAMI COUNTY ENGINEER'S RECORD OF LOT SURVEYS DATE: NOVEMBER 6, 1996

NOTE: 5.000 Ac. PART OF INLOT 2392 IS TO BE TRANSFERRED TO INLOT 3214. NO NEW BUILDING SITE IS BEING CREATED.

SURVEY REFERENCES

- SURVEYS: VOLUME 12, PG. 67 VOLUME 17, PG. 40 VOLUME 29, PG. 124 VOLUME 36, PG. 30 ANNEXATIONS: P.B. 15, PG. 23 P.B. 15, PG. 36 DEEDS: D.B. 484, PG. 463 D.B. 420, PG. 619 D.B. 551, PG. 515 D.B. 603, PG. 108 D.B. 610, PG. 210 D.B. 663, PG. 29



P.O.B. NORTHEAST CORNER, NORTHWEST QUARTER, SECTION 16, T4N, R6E

MEJER INC. D.B. 663, PG. 29 MEJER DC 800 P.B. 17, PG. 29 INLOT #3214 P.B. 17, PG. 29

REMAINDER OF INLOT #2392 P.B. 15, PG. 36 STAR BANK, N.A., TROY, OHIO D.B. 610, PG. 210

PART OF INLOT #2392 P.B. 15, PG. 36 STAR BANK, N.A., TROY, OHIO D.B. 610, PG. 210 5.000 ACRES

SOUTHWEST CORNER, NORTHEAST QUARTER, SECTION 16, T4N, R6E

20' STORM EASEMENT D.B. 632, PG. 800

KENNETH MOTE D.B. 576, PG. 98

LEGEND

- IRON PIN FOUND PK NAIL FOUND 5/8" IRON PIN SET



CERTIFICATION:

WE HEREBY CERTIFY THAT THE WITHIN PLAT IS A RESULT OF A SURVEY PERFORMED UNDER MY DIRECT SUPERVISION. IRON PINS WILL BE SET AS SHOWN.

WOOLPERT

Paul F. MacCallum 11/25/96 DATE PAUL F. MACCALLUM OHIO REGISTERED SURVEYOR NO. 7561

PLAT OF SURVEY

FOR 5.000 ACRES OF PART INLOT 2392 LOCATED IN: SECTION 16, TOWN 4N, RANGE 6E CITY OF TIPP CITY MIAMI COUNTY, OHIO



409 E. MONUMENT AVE. DAYTON, OHIO 45402 513.461.5660 FAX 513.461.0743

GRAPHIC SCALE



(IN FEET) 1 inch = 300 ft.

THIS LOT SPLIT REVIEWED AND APPROVED BY THE TIPP CITY PLANNING BOARD THIS 12TH DAY OF NOVEMBER, 1996.

Charles R. ... CHAIRMAN

Neva Huffard SECRETARY