

MIAMI COUNTY, OHIO
CITY OF TIPP CITY

COPY

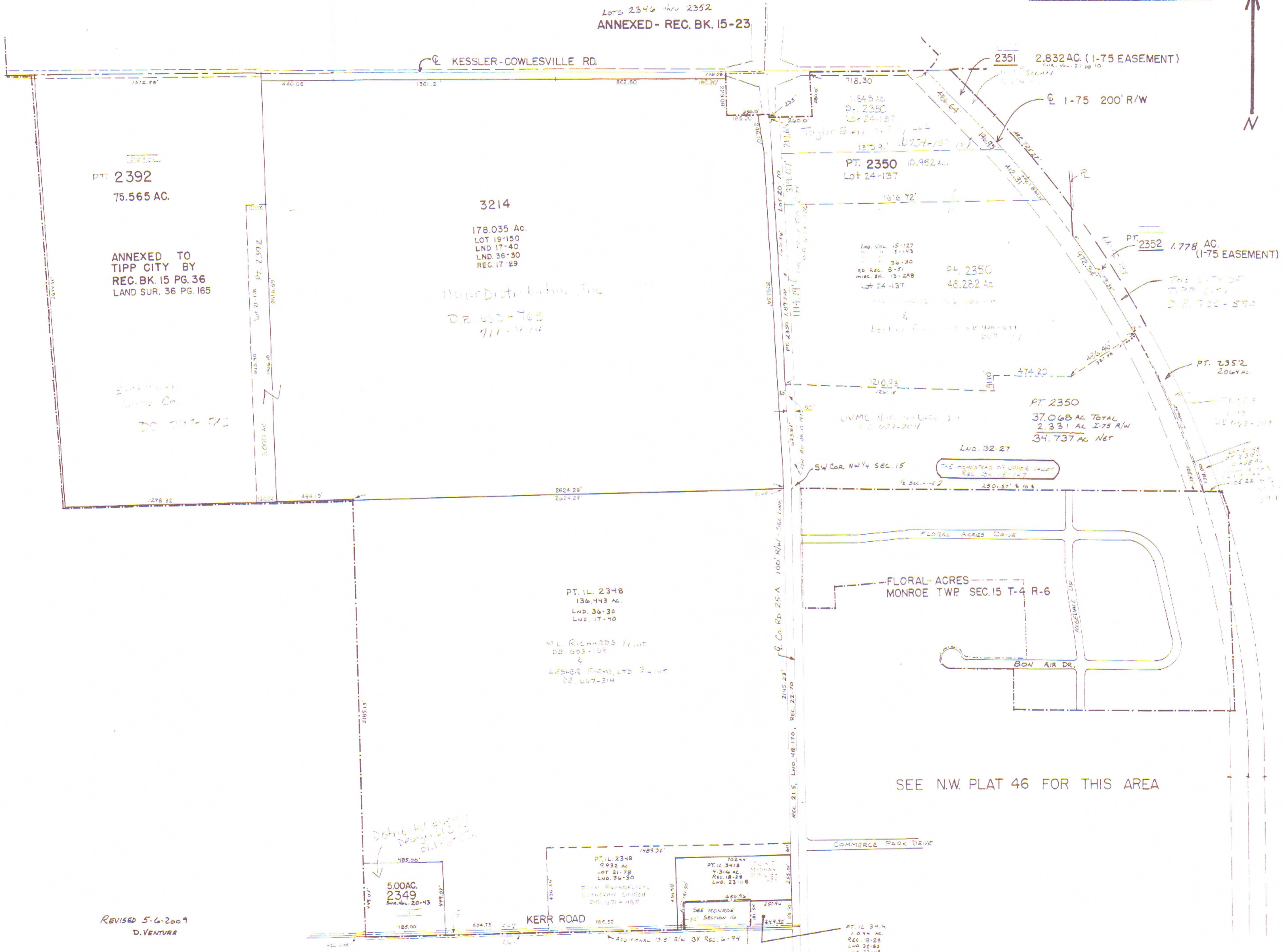
N.W. PLAT 47

SCALE: 1" = 400'

SMDA NUMBER
315-NW47-1



Lots 2346 thru 2352
ANNEXED- REC. BK. 15-23



PT. 2392
75.565 AC.
ANNEXED TO
TIPP CITY BY
REC. BK. 15 PG. 36
LAND SUR. 36 PG. 165

3214
178.035 AC.
LOT 19-150
LND 17-40
LND 36-30
REC. 17-29

Mayor Distribution, Inc.
D.B. 663-745
711-4114

2351 2.832 AC. (1-75 EASEMENT)

PT. 2350 10.952 AC.
Lot 24-137

PT. 2352 1.778 AC.
(1-75 EASEMENT)

PT. 2350
37.068 AC TOTAL
2.331 AC 1-75 R/W
34.737 AC NET

PT. 11. 2348
136.443 AC.
LND. 36-30
LND. 17-40

FLORAL ACRES
MONROE TWP SEC. 15 T-4 R-6

SEE N.W. PLAT 46 FOR THIS AREA

Distributed by
Deputy
01/17/09

5.00 AC.
2349
S.W. 1/4 Sec. 15

PT. 11. 2348
8.932 AC.
LOT 21-78
LND. 36-30

PT. 11. 2348
4.316 AC.
REC. 18-28
LND. 23-18

KERR ROAD

REVISED 5-6-2009
D. VENTURA

KERR RD - ORIG 30' R/W MONROE TWP ROAD RECORDS (2003)
ORIG SOUTH R/W LIND 16 SECTION 15