

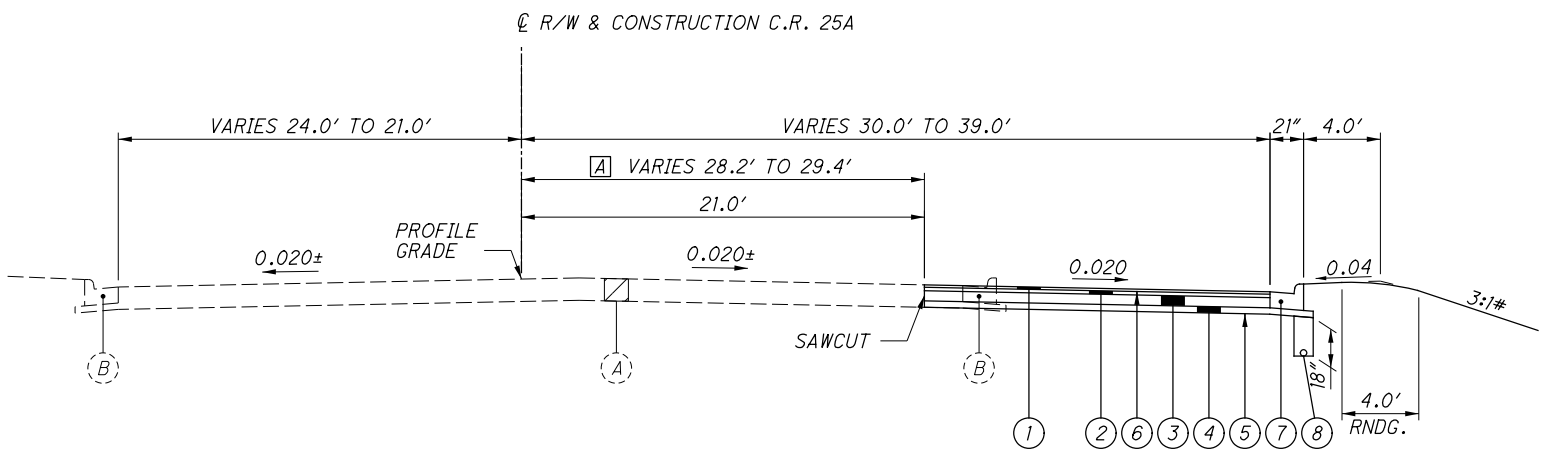
**LEGEND**

- ① ITEM 441 1 1/2" ASPHALT CONCRETE SURFACE COURSE, TYPE 1, (448), PG64-22
- ② ITEM 441 1 3/4" ASPHALT CONCRETE INTERMEDIATE COURSE, TYPE 2, (448)
- ③ ITEM 302 9" ASPHALT CONCRETE BASE, PG64-22
- ④ ITEM 304 6" AGGREGATE BASE
- ⑤ ITEM 204 SUBGRADE COMPACTION
- ⑥ ITEM 407 TACK COAT
- ⑦ ITEM 609 COMBINATION CURB AND GUTTER, TYPE 2, AS PER PLAN
- ⑧ ITEM 605 6" SHALLOW PIPE UNDERDRAIN
- ⑨ ITEM 609 COMBINATION CURB AND GUTTER, TYPE 2
- ⑩ ITEM 608 5" CONCRETE WALK

- (A) EXISTING 14" - 18" ASPHALT PAVEMENT
- (B) EXISTING CURB AND GUTTER

**NOTE**

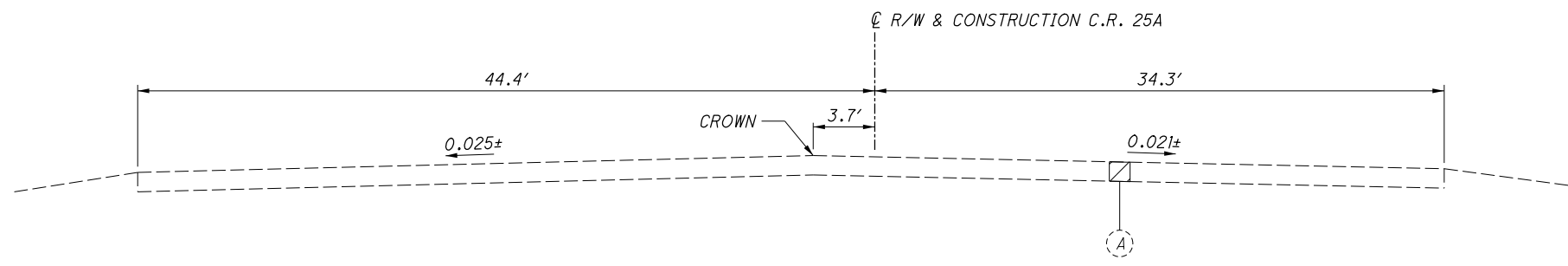
1. C.R. 25A STATION EQUATION AT  
 STA. 116+30.44 (BACK) = STA. 7+98.00 (AHEAD)  
 # OR AS SHOWN ON THE CROSS-SECTIONS



**NORMAL SECTION - C.R. 25A**

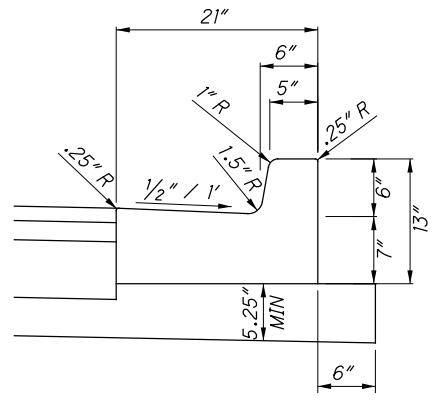
SECTION APPLIES:  
 STA. 93+16.00 TO STA. 103+58.59  
 STA. 108+87.59 TO STA. 9+03.54

[A] STA. 93+16.00 TO STA. 93+90.00

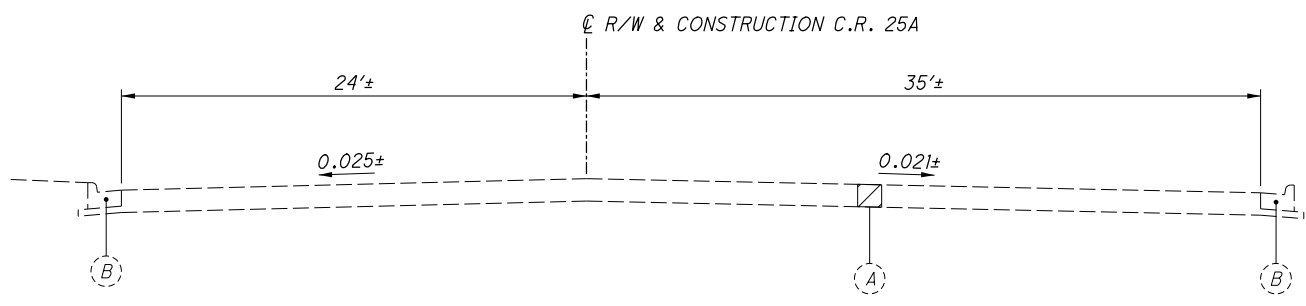


**SECTION OF EXISTING ADJOINING PAVEMENT - C.R. 25A**

SECTION APPLIES:  
 STA. 15+00.00



**ITEM 609 - COMBINATION CURB AND GUTTER TYPE 2, AS PER PLAN (TIPP CITY TYPE 1, COMBINATION CURB AND GUTTER)**

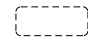




**SECTION OF EXISTING ADJOINING PAVEMENT - C.R. 25A**

SECTION APPLIES:  
 STA. 93+90.00

P:\CTC\TR\0001\_MIA-CR25A\03159\Design\Roadway\Sheets\03159\_GY001.dgn\_Sheet\_3/1/2019 10:41PM dgohs

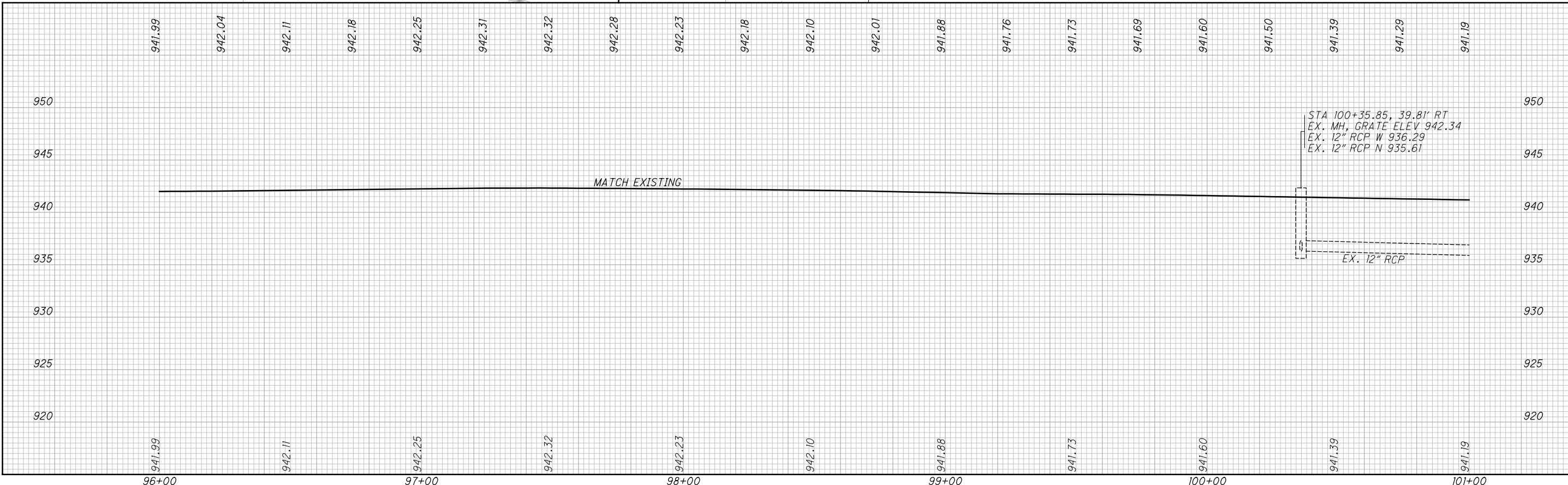
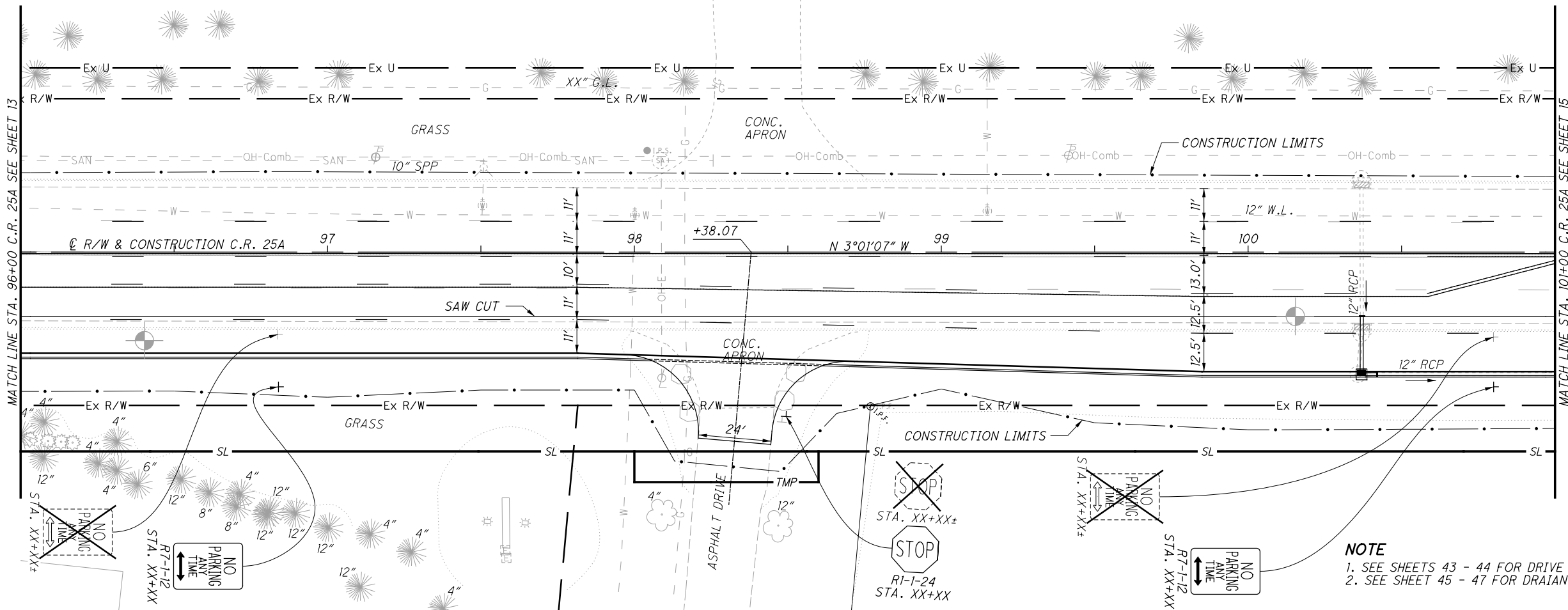


-  EXISTING SIGN TO REMAIN
-  EXISTING SIGN TO BE REMOVED
-  PROPOSED SIGN

CALCULATED  
BAA  
CHECKED  
TWG



0 20 40  
HORIZONTAL  
SCALE IN FEET



PLAN AND PROFILE - C.R. 25A  
STA. 96+00 TO STA. 101+00

MIA - C.R. 25A - 3.54

P:\CTC\TR\000\_MIA-CR25A\03159\_Design\Roadway\Sheets\03159\_GP002.dgn Sheet 3/1/2019 10:58 PM dgon