

SHEET NUM.										PART.		ITEM	ITEM EXT	GRAND TOTAL	UNIT	DESCRIPTION	SEE SHEET NO.
16	17	18	19	20	54	55	01/S>2/O T										
<b>PAVEMENT</b>																	
181							181			254	01000	181	SY	PAVEMENT PLANING, ASPHALT CONCRETE 3"			
400							400			302	46000	400	CY	ASPHALT CONCRETE BASE, PG64-22			
493	165						658			304	20000	658	CY	AGGREGATE BASE			
144							144			407	20000	144	GAL	NON-TRACKING TACK COAT			
	1						1			441	50400	1	CY	ASPHALT CONCRETE SURFACE COURSE, TYPE 1, (448), (DRIVEWAYS)			
	1						1			441	50600	1	CY	ASPHALT CONCRETE INTERMEDIATE COURSE, TYPE 2, (448), (DRIVEWAYS)			
90							90			442	20000	90	CY	ASPHALT CONCRETE SURFACE COURSE, 12.5 MM, TYPE A (448)			
126							126			442	20200	126	CY	ASPHALT CONCRETE INTERMEDIATE COURSE, 19 MM, TYPE A (448)			
1,393							1,393			609	98000	1,393	FT	CURB, MISC.:TIPP CITY TYPE 1 COMBINATION CURB AND GUTTER	3, 7		
<b>WATER WORK</b>																	
			12				12			638	00904	12	FT	6" WATER MAIN DUCTILE IRON ANCHORING PIPE AND FITTINGS			
			722				722			SPECIAL	63820132	722	FT	10" WATER MAIN DIP CLASS 53 MECHANICAL JOINTS AND FITTINGS (TIPP CITY)	7, 43		
			27				27			SPECIAL	63820182	27	FT	12" WATER MAIN DIP CLASS 53 PUSH ON JOINTS AND FITTINGS (TIPP CITY)	7, 43		
			2				2			SPECIAL	63820538	2	EACH	6" GATE VALVE WITH VALVE BOX (TIPP CITY)	43		
			1				1			SPECIAL	63820570	1	EACH	10" GATE VALVE WITH VALVE BOX (TIPP CITY)	43		
			2				2			SPECIAL	63820590	2	EACH	12" INSERTING VALVE WITH VALVE BOX(TIPP CITY)	43		
			1				1			SPECIAL	63820702	1	EACH	10" X 10" TAPPING SLEEVE, VALVE AND VALVE BOX (TIPP CITY)	43		
			2				2			SPECIAL	63820750	2	EACH	6" FIRE HYDRANT (TIPP CITY)	43		
			1				1			SPECIAL	63820752	1	EACH	FIRE HYDRANT REMOVED FOR STORAGE (TIPP CITY)	43		
			330				330			SPECIAL	63820770	330	FT	1" COPPER WATER SERVICE LINE (TIPP CITY)	7, 43		
			11				11			SPECIAL	63820912	11	EACH	1" CURB VALVE AND BOX (TIPP CITY)	43		
			1				1			638	98000	1	EACH	WATER WORK, MISC.: 10" LINE STOP TEE (TIPP CITY)	7		
			2				2			638	98000	2	EACH	WATER WORK, MISC.: FLUSH BOX HYDRANT (TIPP CITY)	8, 46		
<b>SANITARY SEWER</b>																	
				162			162			611	97400	162	FT	CONDUIT, MISC.: 6" CONDUIT, TYPE B, 707.45	41, 42		
		2		6			8			611	99660	8	EACH	MANHOLE RECONSTRUCTED TO GRADE			
				3			3			SPECIAL	69098000	3	EACH	SANITARY MANHOLE PROTECTIVE LINING SYSTEM	8		
				603			603			899	10000	603	FT	CURED-IN-PLACE PIPE LINER, (24" DIAMETER)			
<b>LIGHTING</b>																	
				16	16		32			625	00450	32	EACH	CONNECTION, FUSED PULL APART			
				4	4		8			625	10500	8	EACH	LIGHT POLE, MISC.:LIGHT POLE, DECORATIVE, WITH BANNER ARMS	56, 57		
				4	4		8			625	10500	8	EACH	LIGHT POLE, MISC.:LIGHT POLE, DECORATIVE, WITH FLAG POLE HOLDER	56, 57		
				8	8		16			625	14501	16	EACH	LIGHT POLE FOUNDATION, AS PER PLAN	57		
				4,824	4,653		9,477			625	22990	9,477	FT	NO. 6 AWG 600 VOLT DISTRIBUTION CABLE			
				2,268	2,277		4,545			625	23306	4,545	FT	NO. 10 AWG 600 VOLT DISTRIBUTION CABLE			
				600	600		1,200			625	23400	1,200	FT	NO. 10 AWG POLE AND BRACKET CABLE			
				1,905	1,894		3,799			625	25104	3,799	FT	CONDUIT, 1", 725.051			
					25		25			625	25408	25	FT	CONDUIT, 2", 725.051			
	31			41	671		743			625	25604	743	FT	CONDUIT, 4", 725.051			
				8	8		16			625	27401	16	EACH	LUMINAIRE, POST TOP, AS PER PLAN, DECORATIVE	56, 57		
				589	1,230		1,819			625	29000	1,819	FT	TRENCH			
				2			2			625	30510	2	EACH	PULL BOX, 725.06, SIZE 4			
				1			1			625	30520	1	EACH	PULL BOX, 725.06, SIZE 7			
					1		1			625	30530	1	EACH	PULL BOX, 725.06, SIZE 18			
					2		2			625	30610	2	EACH	PULL BOX, 725.07, SIZE 4			
				8	9		17			625	32000	17	EACH	GROUND ROD			
					1		1			625	34001	1	EACH	POWER SERVICE, AS PER PLAN	56		
				8			8			625	75501	8	EACH	LIGHT POLE FOUNDATION REMOVED, AS PER PLAN	7		
					81		81			632	69950	81	FT	SERVICE CABLE, MISC.: 1/0 AWG., 600 VOLTS	56,59		
					1		1			632	70400	1	EACH	CONDUIT RISER, 2" DIAMETER			

GENERAL SUMMARY

MIA-571-15.03

REF NO.	SHEET NO.	SIDE	ROADWAY	STATION TO STATION	625	625	625	625	625	625	625	625	625	625	625	625	625	625	632	632					
					CONNECTION, FUSED PULL APART	LIGHT POLE, MISC.; LIGHT POLE, DECORATIVE, WITH FLAG POLE HOLDER	LIGHT POLE, MISC.; LIGHT POLE, DECORATIVE, WITH BANNER ARMS	LIGHT POLE FOUNDATION, AS PER PLAN	NO. 6 AWG 600 VOLT DISTRIBUTION CABLE	NO. 10 AWG 600 VOLT DISTRIBUTION CABLE	NO. 10 AWG POLE AND BRACKET CABLE	CONDUIT, 1", 725.051	CONDUIT, 4", 725.051	LUMINAIRE, POST TOP, AS PER PLAN, DECORATIVE	TRENCH	PULL BOX, 725.06, SIZE 4	PULL BOX, 725.06, SIZE 7	GROUND ROD		LIGHT POLE FOUNDATION REMOVED, AS PER PLAN	SERVICE CABLE, MISC.; 1/0 AWG., 600 VOLTS	CONDUIT RISER, 2" DIAMETER			
					EACH	EACH	EACH	EACH	FT	FT	FT	FT	FT	EACH	FT	EACH	EACH	EACH	EACH	EACH	FT	EACH			
EO#1	58, 59	LT	MAIN STREET	36+08.55																					
C-1	58, 59	LT	MAIN STREET	36+08.55 TO 36+48.55					174				46			46									
EO#2	58, 59	LT	MAIN STREET	36+48.55																					
C-2	58, 59	LT	MAIN STREET	36+48.55 TO 36+88.56					174				46			46									
EO#3	58, 59	LT	MAIN STREET	36+88.56																					
C-4	58, 59	LT	MAIN STREET	36+88.56 TO 37+48.44					234				66			66									
EO#4	58, 59	LT	MAIN STREET	37+48.44																					
C-5	58, 59	LT	MAIN STREET	37+48.44 TO 37+52.44					45				4			4									
PBx1	58, 59	LT	MAIN STREET	37+52.44												1									
C-7	58, 59	LT	MAIN STREET	37+52.44 TO 42+31.44					1467				484												
EO#5	58, 59	LT	MAIN STREET	37+98.44																					
C-8	58, 59	LT	MAIN STREET	37+98.44 TO 38+52.00					204				56			56									
EO#6	58, 59	LT	MAIN STREET	38+52.00																					
C-10	58, 59	LT	MAIN STREET	38+52.00 TO 39+05.50					201				55			55									
EO#7	58, 59	LT	MAIN STREET	39+05.50																					
C-12	58, 59	LT	MAIN STREET	39+05.50 TO 39+52.31					180				48			48									
EO#8	58, 59	LT	MAIN STREET	39+52.31																					
C-13	58, 59	LT	MAIN STREET	39+52.31 TO 39+56.31					45				4			4									
PBx2	58, 59	LT	MAIN STREET	39+56.31												1									
C-15	58, 59	LT	MAIN STREET	39+56.31 TO 42+31.44					840				275												
EO#9	58, 59	LT	MAIN STREET	40+08.36																					
C-16	58, 59	LT	MAIN STREET	40+08.36 TO 40+63.36					201				55			55									
EO#10	58, 59	LT	MAIN STREET	40+63.36																					
C-17	58, 59	LT	MAIN STREET	40+63.36 TO 41+13.36					186				50			50									
EO#11	58, 59	LT	MAIN STREET	41+13.36																					
C-19	58, 59	LT	MAIN STREET	41+13.36 TO 41+68.36					201				55			55									
EO#12	58, 59	LT	MAIN STREET	41+68.36																					
C-21	58, 59	LT	MAIN STREET	41+68.36 TO 42.18.36					186				50			50									
EO#13	58, 59	LT	MAIN STREET	42.18.36																					
C-22	58, 59	LT	MAIN STREET	42.18.36 TO 42+31.44					72				13			13									
B-1	58, 59	LT	MAIN STREET	36+58.00	2		1	1				75			1				1						
C-3	58, 59	LT	MAIN STREET	36+58.00 TO 37+30.00						273		75	75												
F-1	58, 59	LT	MAIN STREET	37+30.00	2	1		1				75			1				1						
C-6	58, 59	LT	MAIN STREET	37+30.00 TO 38+15.00						306		75	86												
B-2	58, 59	LT	MAIN STREET	38+15.00	2		1	1				75			1				1						
C-9	58, 59	LT	MAIN STREET	38+15.00 TO 38+90.00						282		75	78												
F-2	58, 59	LT	MAIN STREET	38+90.00	2	1		1				75			1				1						
C-11	58, 59	LT	MAIN STREET	38+90.00 TO 39+63.00						285		75	79												
B-3	58, 59	LT	MAIN STREET	39+63.00	2		1	1				75			1				1						
C-14	58, 59	LT	MAIN STREET	39+63.00 TO 40+53.00						327		75	93												
F-3	58, 59	LT	MAIN STREET	40+53.00	2	1		1				75			1				1						
C-18	58, 59	LT	MAIN STREET	40+53.00 TO 41+43.00						333		75	95												
B-4	58, 59	LT	MAIN STREET	41+43.00	2		1	1				75			1				1						
C-20	58, 59	LT	MAIN STREET	41+43.00 TO 42+33.00						324		75	92												
F-4	58, 59	LT	MAIN STREET	42+33.00	2	1		1				75			1				1						
PBx3	58, 59	LT	MAIN STREET	42+31.44												1									
C-47	58, 59	LT, RT	MAIN STREET	42+33.00 TO 42+31.44					414	138			41			41									
ELP-1	58	RT	MAIN STREET	36+54.44																	1				
ELP-2	58	LT	MAIN STREET	37+04.60																	1				
ELP-3	58	RT	MAIN STREET	37+32.78																	1				
ELP-4	58	LT	MAIN STREET	38+03.90																	1				
ELP-5	58	RT	MAIN STREET	38+69.02																	1				
ELP-6	58	LT	MAIN STREET	39+48.49																	1				
ELP-7	58	RT	MAIN STREET	39+99.83																	1				
ELP-8	58	LT	MAIN STREET	40+46.19																	1				
TOTALS CARRIED TO GENERAL SUMMARY					16	4	4	8	4824	2268	600	1905	41	8	589	2	1	8			8				

LIGHT POLE FOUNDATION REMOVED, AS PER PLAN  
 SERVICE CABLE, MISC.; 1/0 AWG., 600 VOLTS  
 CONDUIT RISER, 2" DIAMETER

CALCULATED	BMW	CHECKED	AJH
LIGHTING SUBSUMMARY			
MIA-571-15.03			
54			
70			

REF NO.	SHEET NO.	SIDE	ROADWAY	STATION TO STATION	625	625	625	625	625	625	625	625	625	625	625	625	625	632	632				
					CONNECTION, FUSED PULL APART	LIGHT POLE, MISC.: LIGHT POLE, DECORATIVE, WITH FLAG POLE HOLDER	LIGHT POLE, MISC.: LIGHT POLE, DECORATIVE, WITH BANNER ARMS	LIGHT POLE FOUNDATION, AS PER PLAN	NO. 6 AWG 600 VOLT DISTRIBUTION CABLE	NO. 10 AWG 600 VOLT DISTRIBUTION CABLE	NO. 10 AWG POLE AND BRACKET CABLE	CONDUIT, 1", 725.051	CONDUIT, 2", 725.051	CONDUIT, 4", 725.051	LUMINAIRE, POST TOP, AS PER PLAN, DECORATIVE	TRENCH	PULL BOX, 725.07, SIZE 4	PULL BOX, 725.06, SIZE 18	GROUND ROD	POWER SERVICE, AS PER PLAN	SERVICE CABLE, MISC.: 1/0 AWG., 600 VOLTS	CONDUIT RISER, 2" DIAMETER	
					EACH	EACH	EACH	EACH	FT	FT	FT	FT	FT	FT	EACH	FT	EACH	EACH	EACH	EACH	FT	EACH	
EO#14	58, 59	RT	MAIN STREET	36+07.90																			
C-23	58, 59	RT	MAIN STREET	36+07.90 TO 36+47.90					162				42										
EO#15	58, 59	RT	MAIN STREET	36+47.90																			
C-24	58, 59	RT	MAIN STREET	36+47.90 TO 36+99.89					198				54										
EO#16	58, 59	RT	MAIN STREET	36+99.89																			
C-26	58, 59	RT	MAIN STREET	36+99.89 TO 37+48.80					186				50										
EO#17	58, 59	RT	MAIN STREET	37+48.80																			
C-27	58, 59	RT	MAIN STREET	37+48.80 TO 37+52.68					45				4										
PBx4	58, 59	RT	MAIN STREET	37+52.68												1							
C-29	58, 59	RT	MAIN STREET	37+52.68 TO 42+31.44					1470				485										
EO#18	58, 59	RT	MAIN STREET	38+00.00																			
C-30	58, 59	RT	MAIN STREET	38+00.00 TO 38+52.00					195				53										
EO#19	58, 59	RT	MAIN STREET	38+52.00																			
C-32	58, 59	RT	MAIN STREET	38+52.00 TO 39+06.56					201				55										
EO#20	58, 59	RT	MAIN STREET	39+06.56																			
C-34	58, 59	RT	MAIN STREET	39+06.56 TO 39+52.31					171				45										
EO#21	58, 59	RT	MAIN STREET	39+52.31																			
C-35	58, 59	RT	MAIN STREET	39+52.31 TO 39+56.31					45				4										
PBx5	58, 59	RT	MAIN STREET	39+56.31												1							
C-37	58, 59	RT	MAIN STREET	39+56.31 TO 42+31.44					852				279										
EO#22	58, 59	RT	MAIN STREET	40+08.35																			
C-38	58, 59	RT	MAIN STREET	40+08.35 TO 40+59.39					195				53										
EO#23	58, 59	RT	MAIN STREET	40+59.39																			
C-39	58, 59	RT	MAIN STREET	40+59.39 TO 41+68.34					363				109										
EO#24	58, 59	RT	MAIN STREET	41+68.34																			
C-41	58, 59	RT	MAIN STREET	41+68.34 TO 42+31.44					228				65										
B-5	58, 59	RT	MAIN STREET	36+58.00	2		1	1			75			1					1				
C-25	58, 59	RT	MAIN STREET	36+58.00 TO 37+30.00						270		74											
F-5	58, 59	RT	MAIN STREET	37+30.00	2	1		1			75			1					1				
C-28	58, 59	RT	MAIN STREET	37+30.00 TO 38+15.00						315		89											
B-6	58, 59	RT	MAIN STREET	38+15.00	2		1	1			75			1					1				
C-31	58, 59	RT	MAIN STREET	38+15.00 TO 38+90.00						279		77											
F-6	58, 59	RT	MAIN STREET	38+90.00	2	1		1			75			1					1				
C-33	58, 59	RT	MAIN STREET	38+90.00 TO 39+63.00						273		75											
B-7	58, 59	RT	MAIN STREET	39+63.00	2		1	1			75			1					1				
C-36	58, 59	RT	MAIN STREET	39+63.00 TO 40+53.00						324		92											
F-7	58, 59	RT	MAIN STREET	40+53.00	2	1		1			75			1					1				
C-40	58, 59	RT	MAIN STREET	40+53.00 TO 41+43.00						324		92											
B-8	58, 59	RT	MAIN STREET	41+43.00	2		1	1			75			1					1				
C-42	58, 59	RT	MAIN STREET	41+43.00 TO 42+33.00						321		91											
F-8	58, 59	RT	MAIN STREET	42+33.00	2	1		1			75			1					1				
C-43	58, 59	RT	MAIN STREET	42+33.00 TO 42+31.44						57		6											
PBx6	58, 59	RT	MAIN STREET	42+31.44												1							
C-44	58, 59	RT	MAIN STREET	42+31.44 TO 42+36.69					342	114				6									
PS#1	58, 59	RT	MAIN STREET	42+36.69															1	1			
C-45	58, 59	RT	MAIN STREET	42+36.69 TO 42+56.89							25									81	1		
C-46	58, 59	RT	MAIN STREET	35+80.17 TO 42+42.73									665										
TOTALS CARRIED TO GENERAL SUMMARY					16	4	4	8	4653	2277	600	1894	25	671	8	1230	2	1	9	1	81	1	

CALCULATED	BMW	CHECKED	AJH
<b>LIGHTING SUBSUMMARY</b>			
<b>MIA-571-15.03</b>			
55			
70			

### SYMBOL SCHEDULE

MARK	LAMP TYPE	VOLTS	SOURCE AND WATTAGE BALLAST (LED DRIVER)	DESCRIPTION	MFR. AND CATALOG SERIES
B or F	LED	120-277	52 WATT (530 mA)	PHILIPS LUMEC SQUARE LANTERN LUMINAIRE	PHILIPS LUMEC L21A LUMINAIRE W/PHILIPS LUMEC POLES FIXTURE: L21A-55W32LED4K-R-LE3-GL-C-240-SCTBD-LMS11289J POLE B: R80A-12-BA24(2)-GFII-LGV-TBC1-VPA-SCTBD-LMS11289E
				PC & PG STYLE POLYMER CONCRETE BOX & COVER, OPEN BASE BOX, 36" DEPTH, ELECTRIC LOGO *GROUND ROD IS INCLUDED - EQUIPMENT GROUND SHALL BE TIED TO THE GROUND ROD IN EACH POLE BOX*	PULL BOX, 725.06

### ELECTRICAL GENERAL NOTES

- ALL ELECTRICAL WORK SHALL CONFORM WITH THE REQUIREMENTS OF THE MOST RECENT VERSION OF THE OHIO BUILDING CODE, THE N.E.C. AND N.F.P.A. STANDARD NO. 70, AND IS SUBJECT TO THE APPROVAL OF THE AUTHORITY HAVING JURISDICTION.
- ALL NOTED MOUNTING HEIGHTS ARE FROM FINISHED FLOOR/GRADE OR GRADE TO CENTER OF DEVICE UNLESS OTHERWISE NOTED.
- THREE No. 6 AND No. 10 AWG. 600 VOLT DISTRIBUTION CABLES SHALL BE USED FOR SUPPLYING POWER TO THE POLES.
- THREE No. 10 AWG. POLE AND BRACKET CABLES SHALL BE USED TO SUPPLY POWER TO THE LUMINAIRE.
- THREE No. 10 AWG. POLE AND BRACKET CABLES SHALL BE USED TO SUPPLY POWER TO THE OUTLETS.

F=POLES WITH FLAG POLE HOLDERS  
B=POLES WITH BANNER ARMS

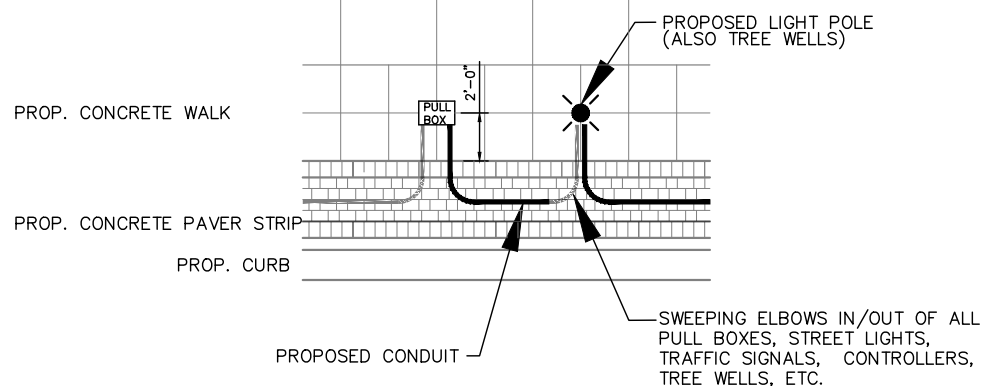
### PULLBOX TABLE

PULL BOX #	STATION	SIDE	OFFSET	SIZE (*) (725.06)
PBx1	37+52.44	LT	19.69'	4
PBx2	39+56.31	LT	17.5'	4
PBx3	42+31.44	LT	17.5'	7
PBx4	37+52.68	RT	27.15'	4
PBx5	39+56.31	RT	17.5'	4
PBx6	42+31.44	RT	23.5'	18

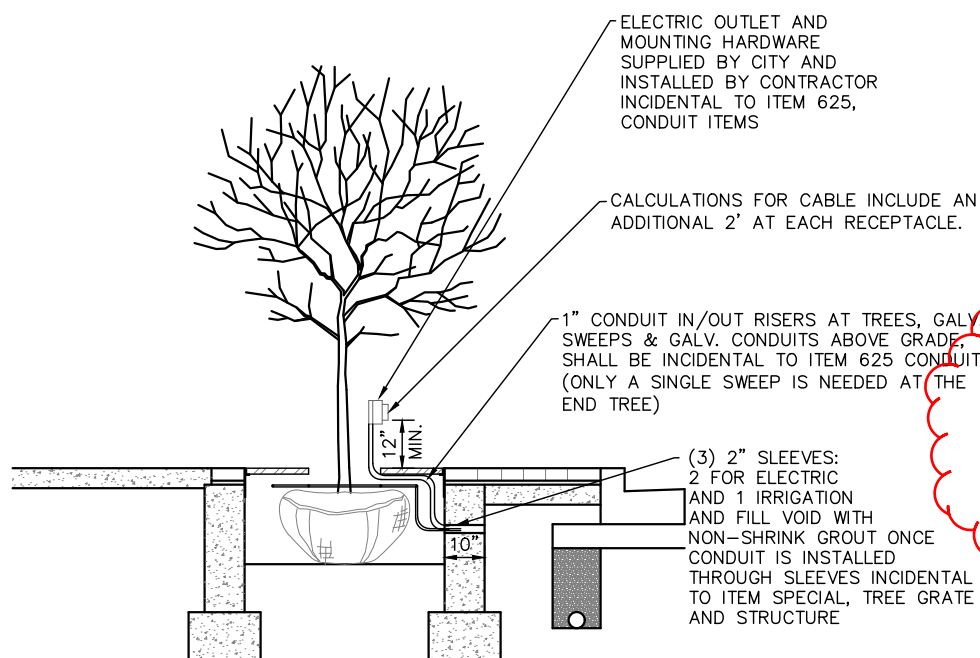
\*ALL PULLBOXES SHALL BE ODOT SCD HL-30.11

### GENERAL NOTES

- CONDUIT PLACEMENT IN ELECTRICAL DRAWINGS ARE DRAWN FOR CLARITY. ACTUAL CONDUIT SHOULD BE INSTALLED IN EXISTING RIGHT-OF-WAYS. COORDINATE EXACT CONDUIT ROUTES WITH THE ENGINEER TO AVOID CONFLICT WITH SIGNAGE, CURBS, TREES AND OTHER LANDSCAPING.
- CONTRACTOR SHALL LOCATE ALL EXISTING UNDERGROUND UTILITIES AND MISCELLANEOUS CONDUIT AND PIPES PRIOR TO DIGGING. ANY DAMAGE TO UNDERGROUND UTILITIES WHEN DIGGING MUST BE REPAIRED BY THIS CONTRACTOR. NOTE: ALL REPAIRS AND MODIFICATIONS SHALL BE CLOSELY COORDINATED WITH OWNING UTILITIES OFFICIALS.
- STUB CONDUIT THROUGH PULL BOX SIDEWALLS. USE A MANUFACTURERS RECOMMENDED WALL PUNCH AS NECESSARY FOR CONDUIT KNOCKOUTS. SIZE KNOCKOUT ONE TRADE SIZE LARGER THAN CONDUIT TO ALLOW FOR CONDUIT MOVEMENT. COORDINATE WITH THE ENGINEER FOR LOCATIONS. MOUNT BOX SUCH THAT THE TOP OF THE BOX WILL BE FLUSH WITH THE TOP OF FINISH SURFACE.
- CONTRACTOR TO SUPPLY/INSTALL/WIRE ELECTRIC SERVICE ENCLOSURE WITH CONTENTS AND FOUNDATION.
- THE LOCATION OF UNDERGROUND CONDUIT, SHALL BE MARKED BY USE OF CONTINUOUS IDENTIFYING TAPE BURIED IN THE TRENCH ABOVE THE LINE. THE IDENTIFYING TAPE SHALL BE AN INERT MATERIAL, APPROXIMATELY 6" WIDE, COMPOSED OF POLYETHYLENE PLASTIC, HIGHLY RESISTANT TO ALKALIS, ACID OR OTHER CHEMICAL COMPONENTS LIKELY TO BE ENCOUNTERED IN SOILS. THE TAPE SHALL BE BRIGHT YELLOW WITH IDENTIFYING PRINTING "ELECTRIC" IN BLACK LETTERS, ONE SIDE ONLY. TAPES SHALL BE SUPPLIED IN CONTINUOUS ROLLS WITH IDENTIFYING LETTERING REPEATED THE FULL LENGTH OF THE TAPE. IDENTIFYING TAPES SHALL BE BURIED IN THE ELECTRIC LINE TRENCH WITH ONE STRIP PLACED APPROXIMATELY DOWN THE CENTERLINE AND LOCATED APPROXIMATELY 8" TO 12" BELOW FINISHED GRADE. THE TAPE SHALL BE PLACED IN THE TRENCH WITH THE PRINTED SIDE UP AND SHALL BE ESSENTIALLY PARALLEL WITH THE FINISHED SURFACE. THE CONTRACTOR SHALL TAKE NECESSARY PRECAUTIONS TO ENSURE THAT THE TAPE IS NOT PULLED, DISTORTED OR OTHERWISE MISPLACED IN COMPLETING THE TRENCH BACKFILL. TAPE SHALL BE ALLEN SYSTEM'S TERRA TAPE, TECTA TAPE OR EQUAL AS APPROVED BY THE CITY. THE COST OF SUPPLYING AND INSTALLING TAPE SHALL BE CONSIDERED INCIDENTAL TO RELATED ITEMS.
- QUESTIONS OR COMMENTS REGARDING CHANGES, ALTERATIONS SHALL BE DIRECTED TO GARY GARVEY-CITY OF TIPP CITY, 937-667-0519.
- ALL POLE FOUNDATIONS SHALL BE AS SHOWN ON SCD HL-20.11. CONTRACTOR SHALL ANCHOR BOLT PATTERN FROM POLE MANUFACTURER FOR THE POLES BEING DELIVERED TO THIS PROJECT PRIOR TO POURING THE POLE FOUNDATION.
- PRIOR TO THE CONTRACTOR ORDERING ANY POLES OR ANCHOR PLATE, SHOP DRAWINGS MUST BE APPROVED BY THE ENGINEER. HOWEVER, IT IS THE CONTRACTORS RESPONSIBILITY THAT THE ANCHOR BOLT TEMPLATE MATCHES THE POLE BASE FOR THE POLE THAT IS SHIPPED TO THE PROJECT.



### CONDUIT PLACEMENT DETAIL



### TREE WELL ELECTRICAL OUTLET DETAIL

### ITEM 625 LIGHT POLE, MISC.: LIGHT POLE, DECORATIVE, WITH BANNER ARMS

THIS ITEM OF WORK SHALL CONSIST OF INSTALLING THE LIGHT POLE INCLUDING ALL HARDWARE, MATERIALS, AND EQUIPMENT NECESSARY.

LIGHT POLES, LABELED WITH "B", SHALL BE LUMEC POLES WITH (2) TWO BANNER ARMS AS SHOWN IN THE PLANS. LIGHT POLES, BANNER ARMS, AND HARDWARE THE POLE SHALL BE MANUFACTURED BY PHILIPS AND MATCH THE OTHER LIGHT POLES DOWNTOWN.

POLE: R80A-12-BA24(2)-GFII-LGV-TBC1-VPA-SCTBD-LMS11289E  
FINISH: SHALL BE GALVANIZED WITH WILLIAMSBURG COLOR W-0620 MARKET SQUARE DARK GREEN (PS311G116)(LUMEC 112047)

CONTRACTOR SHALL CONTACT THE POLE MANUFACTURER FOR BOLT CIRCLE DIMENSIONS. FAILURE TO VERIFY THE FOUNDATION WITH THE MANUFACTURER PRIOR TO ITS INSTALLATION WILL REQUIRE A CONTRACTOR TO RECONSTRUCT, OR RESET AT THE CONTRACTOR'S EXPENSE.

PAYMENT FOR ITEM 625 LIGHT POLE, MISC.: LIGHT POLE, DECORATIVE, WITH BANNER ARMS, FOR ALL OPERATIONS DESCRIBED ABOVE SHALL BE AT THE CONTRACT EACH BID PRICE AND SHALL INCLUDE ALL LABOR, MATERIAL, AND EQUIPMENT REQUIRED TO COMPLETE THIS ITEM OF WORK.

### ITEM 625 LIGHT POLE, MISC.: LIGHT POLE, DECORATIVE, WITH FLAG POLE HOLDER

THIS ITEM OF WORK SHALL CONSIST OF INSTALLING THE LIGHT POLE INCLUDING ALL HARDWARE, MATERIALS, AND EQUIPMENT NECESSARY.

LIGHT POLES, LABELED WITH "F", SHALL BE LUMEC POLES WITH A FLAG POLE HOLDER AS SHOWN IN THE PLANS. LIGHT POLES, FLAG POLE HOLDER, AND HARDWARE THE POLE SHALL BE THE MANUFACTURED BY PHILIPS AND MATCH THE OTHER LIGHT POLES DOWNTOWN.

POLE: R80A-12-FH-GFII-LGV-TBC1-VPA-SCTBD-LMS11289D  
FINISH: SHALL BE GALVANIZED WITH WILLIAMSBURG COLOR W-0620 MARKET SQUARE DARK GREEN (PS311G116)(LUMEC 112047)

CONTRACTOR SHALL CONTACT THE POLE MANUFACTURER FOR BOLT CIRCLE DIMENSIONS. FAILURE TO VERIFY THE FOUNDATION WITH THE MANUFACTURER PRIOR TO ITS INSTALLATION WILL REQUIRE A CONTRACTOR TO RECONSTRUCT, OR RESET AT THE CONTRACTOR'S EXPENSE.

PAYMENT FOR ITEM 625 LIGHT POLE, MISC.: LIGHT POLE, DECORATIVE, WITH FLAG POLE HOLDER, FOR ALL OPERATIONS DESCRIBED ABOVE SHALL BE AT THE CONTRACT EACH BID PRICE AND SHALL INCLUDE ALL LABOR, MATERIAL, AND EQUIPMENT REQUIRED TO COMPLETE THIS ITEM OF WORK.

### ITEM 625 LUMINAIRE, POST TOP, AS PER PLAN, DECORATIVE

THIS ITEM OF WORK SHALL CONSIST OF INSTALLING THE LUMINAIRE INCLUDING ALL WIRING, CONNECTIONS, GROUNDING HARDWARE, MATERIALS, AND EQUIPMENT NECESSARY.

LUMINAIRES SHALL BE LUMEC L21A AND SHALL MATCH THE OTHER LUMINAIRES DOWNTOWN.

LUMINAIRE: L21A-55W32LED4K-R-LE3-GL-C-240-SCTBD-LMS11289J  
FINISH: SHALL BE GALVANIZED WITH WILLIAMSBURG COLOR W-0620 MARKET SQUARE DARK GREEN (PS311G116)(LUMEC 112047)

LUMINAIRE COLOR SHALL MATCH THE POLE COLOR.

THIS ITEM SHALL ALSO INCLUDE ALL REQUIRED HARDWARE TO INSTALL THE LUMINAIRES.

PAYMENT FOR ITEM 625 LUMINAIRE, POST TOP, AS PER PLAN, DECORATIVE FOR ALL OPERATIONS DESCRIBED ABOVE SHALL BE AT THE CONTRACT EACH BID PRICE AND SHALL INCLUDE ALL LABOR, MATERIAL, AND EQUIPMENT REQUIRED TO COMPLETE THIS ITEM OF WORK.

### ITEM 625 POWER SERVICE, AS PER PLAN

IN ADDITION TO THE REQUIREMENTS OF ODOT SPECIFICATIONS 625 AND 725 AND SCD HL-40.20, THE FOLLOWING REQUIREMENTS SHALL APPLY:

TIPP CITY IS THE ELECTRICAL POWER SERVICE PROVIDER. ALL CONNECTIONS TO THE POWER SYSTEM SHALL BE COORDINATED WITH THE CITY AND ENGINEER.

PS #1: GROUND MOUNTED - STA. 42+36.7, 23.5' RT

THE VOLTAGE SUPPLIED SHALL BE NOMINALLY 240 VOLTS. THE CONTRACTOR IS RESPONSIBLE FOR OBTAINING ANY NECESSARY PERMITS, INSPECTIONS, AND THE PAYING OF ALL FEES.

PAYMENT FOR ITEM 625 POWER SERVICE, AS PER PLAN, FOR ALL OPERATIONS DESCRIBED ABOVE SHALL BE AT THE CONTRACT EACH BID PRICE AND SHALL INCLUDE ALL LABOR, MATERIAL, AND EQUIPMENT REQUIRED TO COMPLETE THIS ITEM OF WORK.

### ITEM 632 SERVICE CABLE, MISC.: 1/0 AWG., 600 VOLTS

IN ADDITION TO THE REQUIREMENTS OF ODOT SPECIFICATIONS 632 AND 732, THE FOLLOWING REQUIREMENTS SHALL APPLY:

THE CONTRACTOR SHALL SUPPLY 1/0 AWG. SERVICE CABLE AT THE POWER SERVICE LOCATION.

PAYMENT FOR ITEM 632 SERVICE CABLE, MISC.: 1/0 AWG., 600 VOLTS FOR ALL OPERATIONS DESCRIBED ABOVE SHALL BE AT THE CONTRACT FOOT BID PRICE AND SHALL INCLUDE ALL LABOR, MATERIAL AND EQUIPMENT REQUIRED TO COMPLETE THIS ITEM OF WORK.

### UNDERDRAINS FOR PULL BOXES

REFERENCE IS MADE TO STANDARD CONSTRUCTION DRAWING HL-30.11 FOR DETAILS OF DRAINING PULL BOXES. UNDERDRAINS FOR PULL BOXES SHALL BE USED AS DIRECTED BY THE ENGINEER AND SHALL BE PROVIDED WHERE THE LENGTH REQUIRED FOR A SATISFACTORY OUTLET DOES NOT EXCEED APPROXIMATELY 20 FEET. LONGER LENGTHS MAY BE REQUIRED AT CRITICAL PULL BOXES WHEN DIRECTED BY THE ENGINEER.

PAYMENT FOR ITEM 611 4" CONDUIT, TYPE E UNDERDRAINS WILL BE MADE AT THE CONTRACT FOOT BID PRICE. THE FOLLOWING ESTIMATED QUANTITY IS CARRIED TO THE GENERAL SUMMARY FOR USE AS DIRECTED BY THE ENGINEER.

ITEM 611, 4" CONDUIT, TYPE E.....120 FT.