

Pioneer to relocate pole, overhead guy and anchor assemblies North to new Right-of-Way limit

Pioneer to relocate pole 15' North of existing pole Sta 0+90

Enlarge r/w to accommodate utility relocation for project

Relocated Electric

Powerline

need additional r/w for power relocation

ABE's Ohio 12KV 2 phase

STA. 22+00.00 BK @ CONSTR. CR 31 (FARRINGTON ROAD)
STA. 0+00.00 AH @ CONSTR. CR 16A (PETERSON ROAD)
STA. 102+13.43 @ CONSTR. CR 25A

Proposed relocated pole
need additional r/w for power relocation

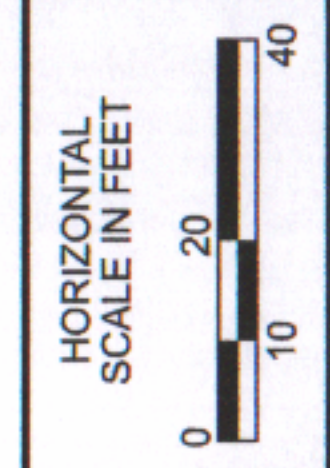
Proposed relocated guying

BEGIN PROJECT
STA. 0+24.43
S.L.M. = 0.00
E200 (258)

CURVE DATA
P.I. = Sta. 0+77.06
 $\Delta = 17^{\circ}56'41''$ RT
 $D_c = 18^{\circ}00'00''$
(NDC $D_c = 6^{\circ}00'00''$)
 $R = 318.31'$
 $T = 50.26'$
 $L = 99.69'$
 $E = 3.94'$
 $e_{max} = 0.02$
(NDC 0.08)

CROSS REFERENCES	
SHEET	DESCRIPTION
10, 11	GENERAL SUMMARY
	ESTIMATED QUANTITIES
27	SUPERELEVATION TABLES
28	INTERSECTION DETAILS
29	DRIVE DETAILS
31, 32	TRAFFIC CONTROL
33, 34	STRUCTURE PLANS

- LEGEND**
- @ FIRST POST ON THE STRUCTURE
 - (REC) LOCATION PER RECORD PLANS
 - ITEM 670, SLOPE EROSION PROTECTION, TYPE B
 - ITEM 601, ROCK CHANNEL PROTECTION, TYPE C WITH GEOTEXTILE FABRIC



PLAN SHEET
STA. 20+50.00 TO STA. 3+00.00

DESIGN AGENCY
KORDA
KORDA / NEMETH
ENGINEERING, INC
1650 Watermark Drive,
Suite 200,
Columbus, OH 43215

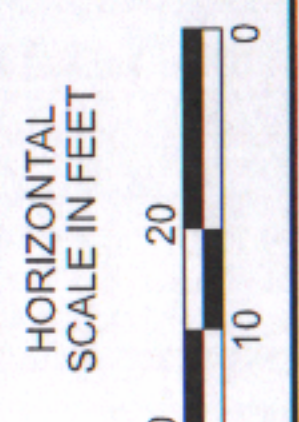
DESIGNER
CLP

REVIEWER
BMV 09/29/21

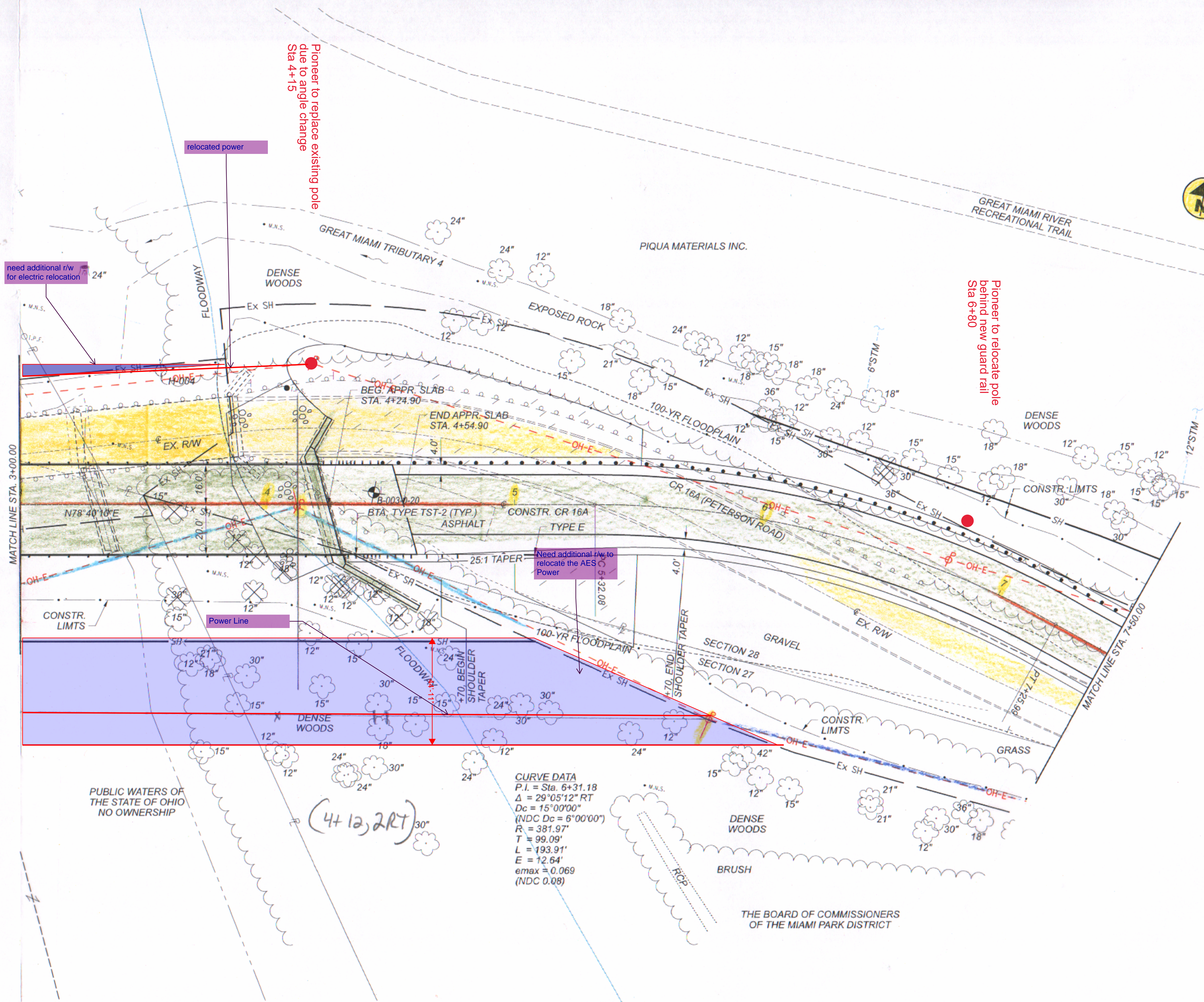
PROJECT ID
108792

SHEET	TOTAL
12	34

MODEL: P:\proj\108792\108792.dwg DATE: 11/17/2021 TIME: 3:48:04 PM USER: mtenleystright
H:\p\o\lects\2019\2019-0444.dwg MIA-CR16A-0.05\U08792_1000-Engineering\Roadway\Sheets\108792_GPO01.dwg



PLAN SHEET
 STA. 3+00.00 TO STA. 7+50.00



CROSS REFERENCES	
SHEET	DESCRIPTION
10, 11	GENERAL SUMMARY
	ESTIMATED QUANTITIES
27	SUPERELEVATION TABLES
28	INTERSECTION DETAILS
29	DRIVE DETAILS
31, 32	TRAFFIC CONTROL
33, 34	STRUCTURE PLANS

- LEGEND**
- ⊕ FIRST POST ON THE STRUCTURE
 - (REC) LOCATION PER RECORD PLANS
 - [Symbol] ITEM 670, SLOPE EROSION PROTECTION, TYPE B
 - [Symbol] ITEM 601, ROCK CHANNEL PROTECTION, TYPE C WITH GEOTEXTILE FABRIC

CURVE DATA
 P.I. = Sta. 6+31.18
 $\Delta = 29^{\circ}05'12''$ RT
 $D_c = 15^{\circ}00'00''$
 (NDC $D_c = 6^{\circ}00'00''$)
 $R = 381.97'$
 $T = 99.09'$
 $L = 193.91'$
 $E = 12.64'$
 $e_{max} = 0.069$
 (NDC 0.08)

(4+12, 2RT) 30"

DESIGN AGENCY
KORDA
 KORDA / NEMETH
 ENGINEERING, INC
 1650 Watermark Drive,
 Suite 200,
 Columbus, OH 43215
 DESIGNER
 CLP
 REVIEWER
 BMV 09/29/21
 PROJECT ID
 108792
 SHEET TOTAL
 14 34

MODEL: Plan [Sheet1] PAPER SIZE: 11x17 (in.) DATE: 11/20/21 TIME: 3:46:05 PM USER: mtenleystr-right
 H:\Projects\2019\2019-0444_00_MA-CR16A-005\08792\400-Engineer\Inq\Floodway_Sheets\108792_IP0002.dgn