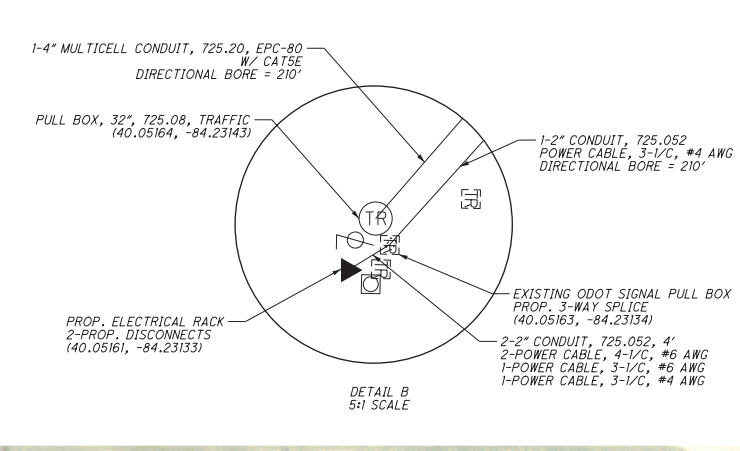
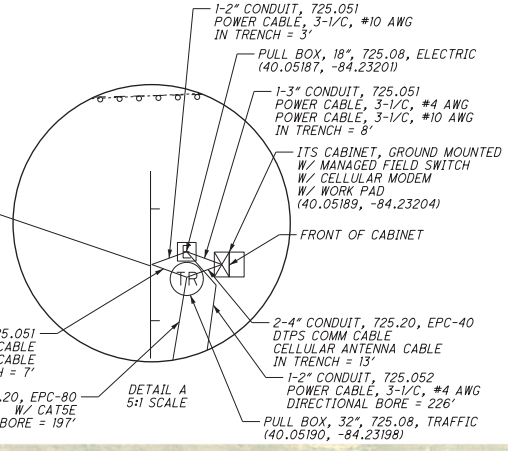
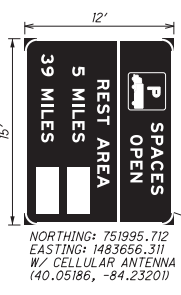
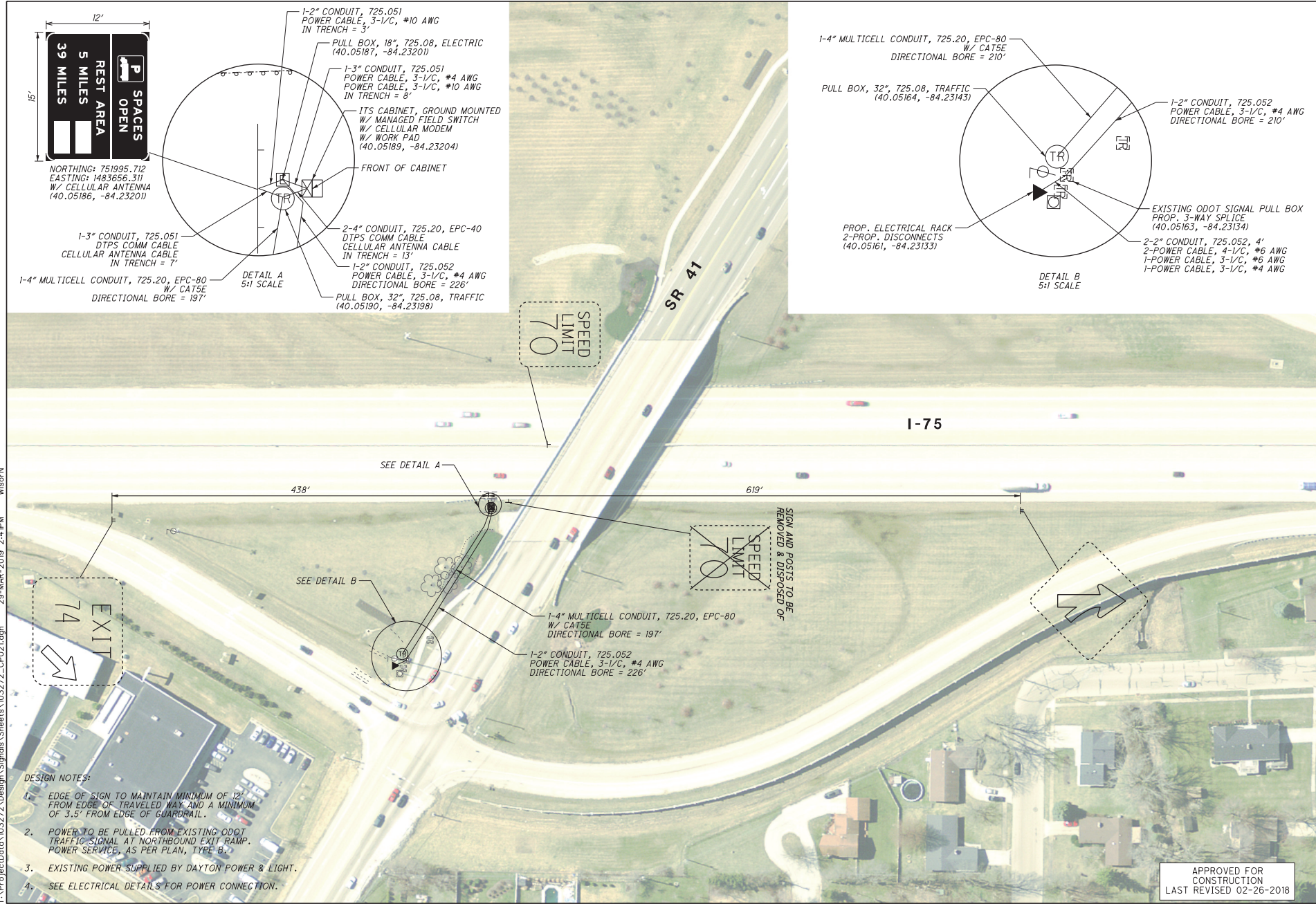


T:\ProjectData\103272\Design\Signals\Sheets\103272_CFP021.dgn 25-MAR-2019 2:44PM WisorN



- DESIGN NOTES:
- EDGE OF SIGN TO MAINTAIN MINIMUM OF 12' FROM EDGE OF TRAVELED WAY AND A MINIMUM OF 3.5' FROM EDGE OF GUARDRAIL.
 - POWER TO BE PULLED FROM EXISTING ODOT TRAFFIC SIGNAL AT NORTHBOUND EXIT RAMP. POWER SERVICE, AS PER PLAN, TYPE B.
 - EXISTING POWER SUPPLIED BY DAYTON POWER & LIGHT.
 - SEE ELECTRICAL DETAILS FOR POWER CONNECTION.

CALCULATED NEW	CHECKED JRL
I-75 - DTPS 75.00 NB TRUCK PARKING SIGN	
VAR-TPIMS	
65 131	

APPROVED FOR CONSTRUCTION
LAST REVISED 02-26-2018