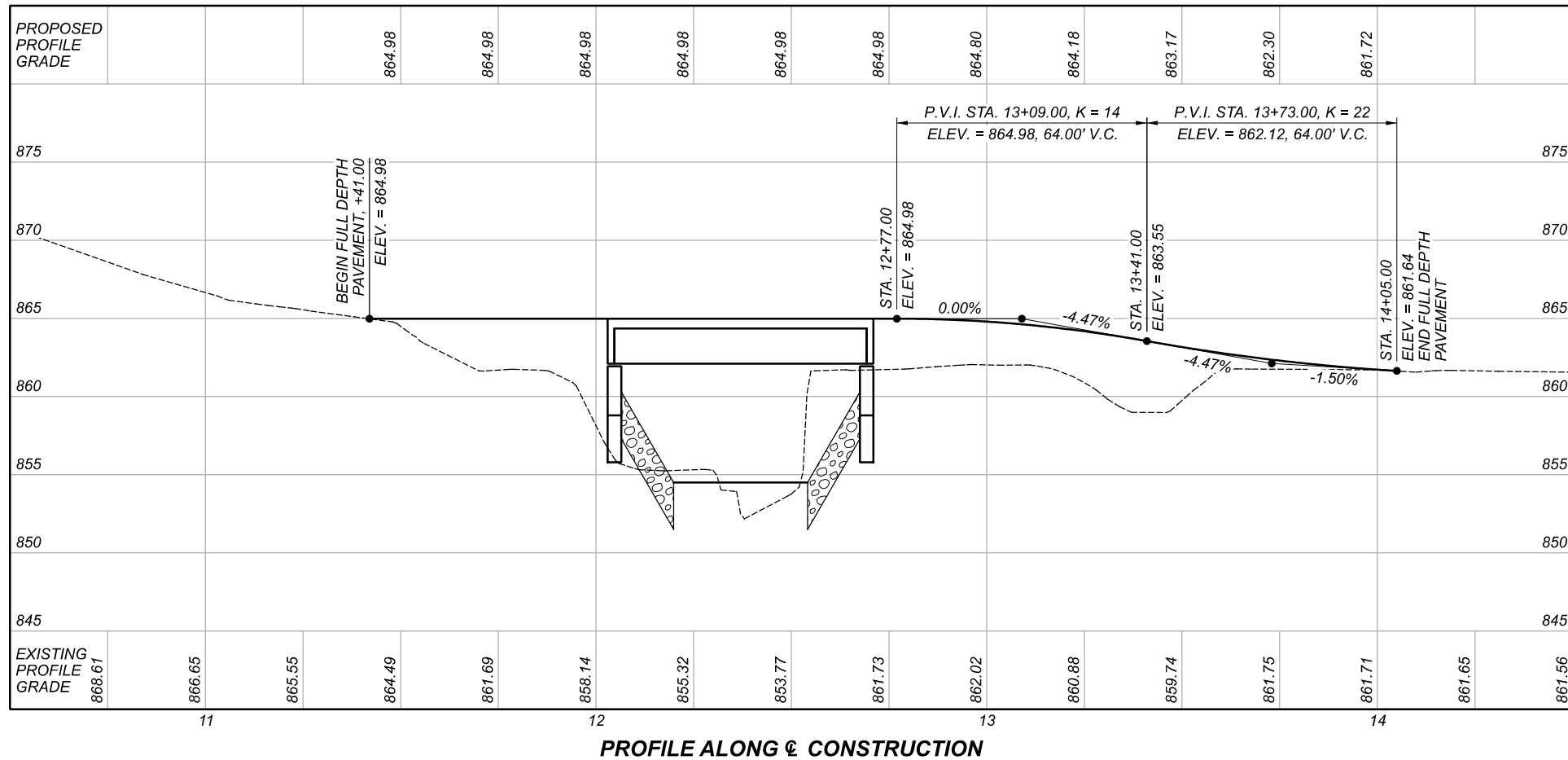
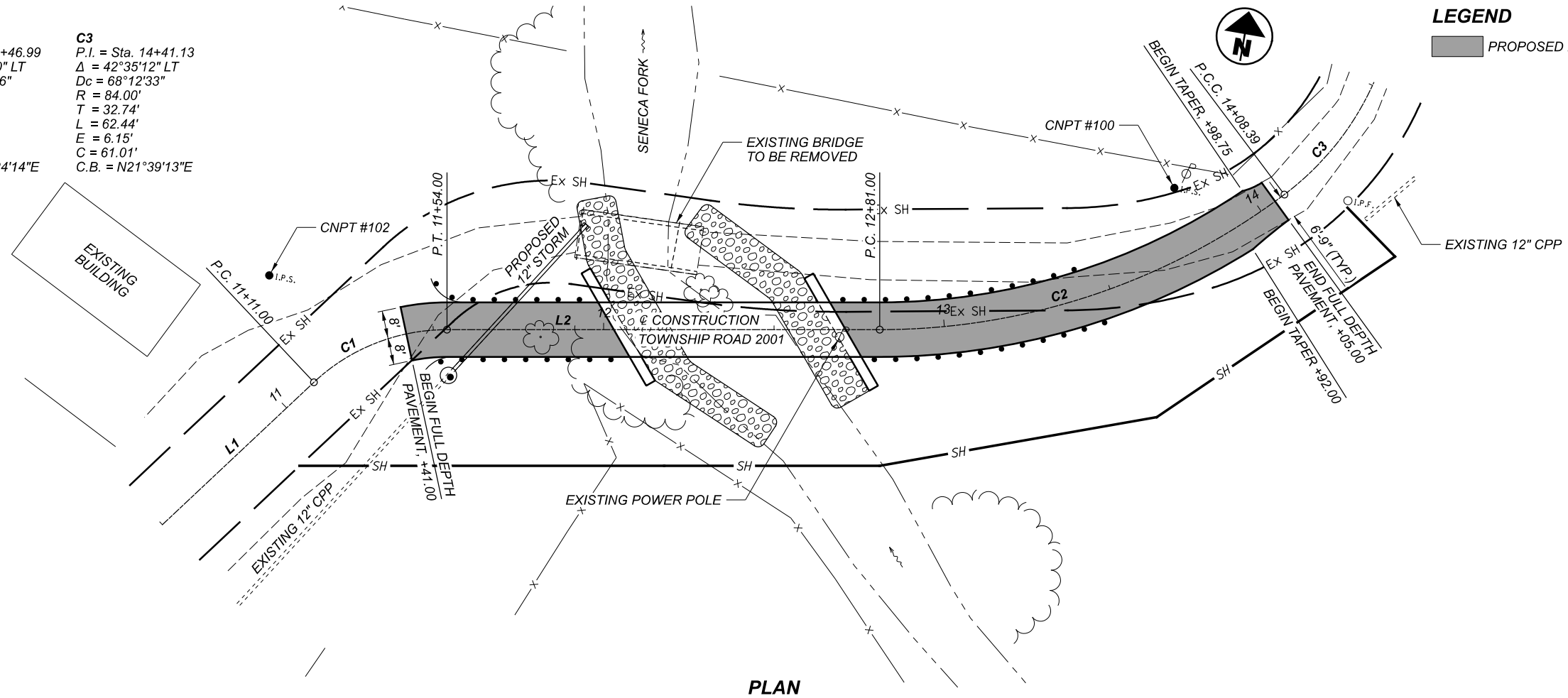


CENTERLINE DATA

C1	C2	C3
P.I. = Sta. 11+33.58	P.I. = Sta. 13+46.99	P.I. = Sta. 14+41.13
$\Delta = 43^\circ 13' 23''$ RT	$\Delta = 36^\circ 54' 50''$ LT	$\Delta = 42^\circ 35' 12''$ LT
$D_c = 100^\circ 31' 08''$	$D_c = 28^\circ 58' 36''$	$D_c = 68^\circ 12' 33''$
$R = 57.00'$	$R = 197.73'$	$R = 84.00'$
$T = 22.58'$	$T = 65.99'$	$T = 32.74'$
$L = 43.00'$	$L = 127.39'$	$L = 62.44'$
$E = 4.31'$	$E = 10.72'$	$E = 6.15'$
$C = 41.99'$	$C = 125.20'$	$C = 61.01'$
C.B. = $N58^\circ 14' 57''$ E	C.B. = $N64^\circ 24' 14''$ E	C.B. = $N21^\circ 39' 13''$ E

L1 = 111.00', N36°38'15"E
 L2 = 127.00', N79°51'39"E



LEGEND

■ PROPOSED FULL DEPTH PAVEMENT



PLAN AND PROFILE
 STA. 10+50.00 TO STA. 14+50.00

DESIGN AGENCY
ADR
 DESIGN • ENGINEERING • INNOVATION
 An Employee Owned Company
 88 West Church Street
 Newark, OH 43055
 (740) 345-1921 (ph)
 www.adrinnovations.com

DESIGNER	JTH
REVIEWER	XXX XXXXXX
PROJECT ID	117522
SHEET	TOTAL
1	2