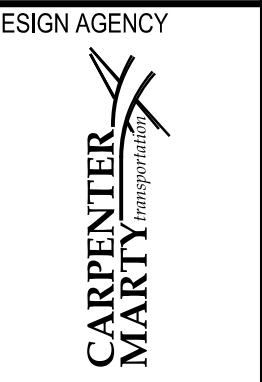


MOT-4-(17.79)(18.03)

MODEL: Sheet PAPER: 34x22 (in.) DATE: 12/2/2022 TIME: 6:38:40 AM USER: CMT008
 P:\ODT\1070686_MOT-4-17.79_18.03\101849\40p-Engineering\Roadway\Sheets\101849_GG001.dgn

SHEET NUM.					PART.		ITEM	ITEM EXT	GRAND TOTAL	UNIT	DESCRIPTION	SEE SHEET NO.
5	42	53	OFFICE CALCS		01/NHS/BR							
ROADWAY												
					LS	201	11000	LS			CLEARING AND GRUBBING	
						202	23000	1,427	SY		PAVEMENT REMOVED	
						202	38000	958	FT		GUARDRAIL REMOVED	
						203	10000	700	CY		EXCAVATION	
						203	20000	75	CY		EMBANKMENT	
						204	10000	2,079	SY		SUBGRADE COMPACTION	
						606	15050	731.3	FT		GUARDRAIL, TYPE MGS	
						606	26150	1	EACH		ANCHOR ASSEMBLY, MGS TYPE E (MASH 2016)	
						606	26550	2	EACH		ANCHOR ASSEMBLY, MGS TYPE T	
						606	35002	5	EACH		MGS BRIDGE TERMINAL ASSEMBLY, TYPE 1	
						606	35102	3	EACH		MGS BRIDGE TERMINAL ASSEMBLY, TYPE 2	
						607	35000	99	FT		FENCE REMOVED AND REBUILT	
						608	10000	4,623	SF		4" CONCRETE WALK	
EROSION CONTROL												
						601	21050	1	SY		TIED CONCRETE BLOCK MAT WITH TYPE 1 UNDERLAYMENT	
						601	21060	61	SY		TIED CONCRETE BLOCK MAT WITH TYPE 2 UNDERLAYMENT	
						659	00100	2	EACH		SOIL ANALYSIS TEST	
						659	00300	118	CY		TOPSOIL	
						659	10000	1,062	SY		SEEDING AND MULCHING	
						659	14000	53	SY		REPAIR SEEDING AND MULCHING	
						659	20000	0.14	TON		COMMERCIAL FERTILIZER	
						659	31000	0.22	ACRE		LIME	
						659	35000	6	MGAL		WATER	
						832	30000	10,000	EACH		EROSION CONTROL	
DRAINAGE												
						605	11110	160	FT		6" SHALLOW PIPE UNDERDRAINS WITH GEOTEXTILE FABRIC	
						605	13300	50	FT		6" UNCLASSIFIED PIPE UNDERDRAINS	
						605	31100	50	FT		AGGREGATE DRAINS	
						611	01500	50	FT		6" CONDUIT, TYPE F	
						611	99710	1	EACH		PRECAST REINFORCED CONCRETE OUTLET	
PAVEMENT												
						253	01000	1,500	SY		PAVEMENT REPAIR	
						254	01000	29,981	SY		PAVEMENT PLANING, ASPHALT CONCRETE (1.5" DEPTH)	
						301	56000	612	CY		ASPHALT CONCRETE BASE, PG64-22, (449)	
						304	20000	344	CY		AGGREGATE BASE	
						407	13900	52	GAL		TACK COAT, 702.13	
						407	20000	2,878	GAL		NON-TRACKING TACK COAT	
						409	30000	737	FT		SAWING AND SEALING ASPHALT CONCRETE PAVEMENT JOINTS	
						442	20000	1,428	CY		ASPHALT CONCRETE SURFACE COURSE, 12.5 MM, TYPE A (448) (PG70-22M)	
						609	24510	90	FT		CURB, TYPE 4-C	

GENERAL SUMMARY




DESIGN AGENCY
 DESIGNER
 KDW
 REVIEWER
 TWG 08-12-22
 PROJECT ID
 101849
 SHEET TOTAL
 39 170

REVISIONS	NUMBER	DATE	DESCRIPTION
	1	12/09/22	REVISED QUANTITIES

SHEET NUM.					PART.		ITEM	ITEM EXT	GRAND TOTAL	UNIT	DESCRIPTION	SEE SHEET NO.
42	56	57	64	66	01/NHS/BR							
LIGHTING												
				8		625	00450	8	EACH	CONNECTION, FUSED PULL APART		
				15		625	00480	15	EACH	CONNECTION, UNFUSED PERMANENT		
				4		625	10490	4	EACH	LIGHT POLE, CONVENTIONAL, DESIGN AT12B40		
				16		625	10614	16	EACH	LIGHT POLE ANCHOR BOLTS ON STRUCTURE		
				1,383		625	23200	1,383	FT	NO. 4 AWG 2400 VOLT DISTRIBUTION CABLE		
				416		625	23400	416	FT	NO. 10 AWG POLE AND BRACKET CABLE		
				46		625	24320	46	FT	1-1/2" DUCT CABLE WITH THREE NO. 4 AWG 2400 VOLT CABLES		
				515		625	25400	515	FT	CONDUIT, 2", 725.04		
				4		625	26253	4	EACH	LUMINAIRE, CONVENTIONAL, SOLID STATE (LED), AS PER PLAN, IES-III-M, LED, 11,000 - 13,000 LUMENS	65	
				6		625	27503	6	EACH	LUMINAIRE, UNDERPASS, SOLID STATE (LED), AS PER PLAN, LED, TYPE III, 240 VOLT	65	
				138		625	29002	138	FT	TRENCH, 24" DEEP		
				6		625	29400	6	FT	TRENCH IN PAVED AREA		
				4		625	29920	4	EACH	STRUCTURE JUNCTION BOX		
				3		625	30700	3	EACH	PULL BOX, 725.08, 18"		
				1		625	31510	1	EACH	PULL BOX REMOVED		
				2		625	33000	2	EACH	STRUCTURE GROUNDING SYSTEM		
				1		625	34001	1	EACH	POWER SERVICE, AS PER PLAN	65	
				144		625	36010	144	FT	UNDERGROUND WARNING/MARKING TAPE		
				1		625	37101	1	EACH	SERVICE TO UNDERPASS LIGHTING, AS PER PLAN	65	
				4		625	39520	4	EACH	PULL BOX CLEANED		
				LS		LS	SPECIAL 62540000	LS		MAINTAIN EXISTING LIGHTING	64	
				2		SPECIAL	62540010	2	EACH	REPLACEMENT OF EXISTING LIGHTING UNIT	64	
				4		625	75400	4	EACH	LIGHT POLE REMOVED		
				1		625	76000	1	EACH	ARC FLASH CALCULATIONS AND LABEL (CC-UP)		
				1		625	98000	1	EACH	LIGHTING, MISC.: UNDERPASS LIGHTING REMOVED	65	
TRAFFIC CONTROL												
				134		621	00100	184	EACH	RPM		
				134		621	54000	184	EACH	RAISED PAVEMENT MARKER REMOVED		
				23		626	00110	23	EACH	BARRIER REFLECTOR, TYPE 2 (ONE-WAY)		
				0.26		642	00200	0.26	MILE	LANE LINE, 4", TYPE 1		
				0.13		642	00300	0.13	MILE	CENTER LINE, TYPE 1		
				180		642	00400	180	FT	CHANNELIZING LINE, 8", TYPE 1		
				44		642	00500	44	FT	STOP LINE, TYPE 1		
				2.13		644	00104	2.13	MILE	EDGE LINE, 6"		
				1.15		644	00204	1.15	MILE	LANE LINE, 6"		
				2,859		644	00404	2,859	FT	CHANNELIZING LINE, 12"		
				95		644	00720	95	FT	CHEVRON MARKING		
				1,800		644	01510	1,800	FT	DOTTED LINE, 6"		
				490		644	01520	490	FT	DOTTED LINE, 12"		
				0.64		646	10010	0.64	MILE	EDGE LINE, 6"		
				0.36		646	10110	0.36	MILE	LANE LINE, 6"		
				355		646	10310	355	FT	CHANNELIZING LINE, 12"		
				1,034		646	20504	1,034	FT	DOTTED LINE, 6"		
				227		646	20510	227	FT	DOTTED LINE, 12"		
										STRUCTURE OVER 20 FOOT SPAN (MOT-00004-17.790L)	77	
										STRUCTURE OVER 20 FOOT SPAN (MOT-00004-17.790R)	116	
										STRUCTURE OVER 20 FOOT SPAN (MOT-00004-18.030)	154	

REVISONS	NUMBER	DATE	DESCRIPTION
1	1	12/09/22	REVISED QUANTITIES

DESIGN AGENCY

 DESIGNER: KDW
 REVIEWER: TWG 08-12-22
 PROJECT ID: 101849
 SHEET: 40 TOTAL: 170

SHEET NUM.						PART.		ITEM	ITEM EXT	GRAND TOTAL	UNIT	DESCRIPTION	SEE SHEET NO.	
			7	9	10	11	01/NHS/BR							
MAINTENANCE OF TRAFFIC														
					200		200	614	11110	200	hour	LAW ENFORCEMENT OFFICER WITH PATROL CAR FOR ASSISTANCE		
					3,340		3,340	614	11630	3,340	FT	INCREASED BARRIER DELINEATION		
					5		5	614	12380	5	EACH	WORK ZONE IMPACT ATTENUATOR, 24" WIDE HAZARDS, (UNIDIRECTIONAL)		
					LS		LS	614	12420	LS		DETOUR SIGNING		
					10		10	614	12500	10	EACH	REPLACEMENT SIGN		
					50		50	614	12600	50	EACH	REPLACEMENT DRUM		
					905		905	614	12800	905	EACH	WORK ZONE RAISED PAVEMENT MARKER		
				25	25		50	614	13000	50	CY	ASPHALT CONCRETE FOR MAINTAINING TRAFFIC		
					90		90	614	13310	90	EACH	BARRIER REFLECTOR, TYPE 1 (ONE-WAY)		
					90		90	614	13350	90	EACH	OBJECT MARKER, ONE WAY		
					8		8	614	18601	8	SNMT	PORTABLE CHANGEABLE MESSAGE SIGN, AS PER PLAN	8	
					1.15		1.15	614	20560	1.15	MILE	WORK ZONE LANE LINE, CLASS III, 6", 642 PAINT		
					0.29		0.29	614	21200	0.29	MILE	WORK ZONE CENTER LINE, CLASS I, 740.06, TYPE I		
					0.43		0.43	614	22110	0.43	MILE	WORK ZONE EDGE LINE, CLASS I, 6", 642 PAINT		
					0.1		0.1	614	22200	0.1	MILE	WORK ZONE EDGE LINE, CLASS I, 4", 740.06, TYPE I		
					2.48		2.48	614	22326	2.48	MILE	WORK ZONE EDGE LINE, CLASS I, 6", 873		
					2.13		2.13	614	22360	2.13	MILE	WORK ZONE EDGE LINE, CLASS III, 6", 642 PAINT		
					7,070		7,070	614	23130	7,070	FT	WORK ZONE CHANNELIZING LINE, CLASS I, 12", 873		
					1,313		1,313	614	23210	1,313	FT	WORK ZONE CHANNELIZING LINE, CLASS I, 12", 642 PAINT		
					73		73	614	23400	73	FT	WORK ZONE CHANNELIZING LINE, CLASS I, 8", 740.06, TYPE I		
					2,859		2,859	614	23690	2,859	FT	WORK ZONE CHANNELIZING LINE, CLASS III, 12", 642 PAINT		
					1,765		1,765	614	24122	1,765	FT	WORK ZONE DOTTED LINE, CLASS I, 6", 873		
					325		325	614	24202	325	FT	WORK ZONE DOTTED LINE, CLASS I, 6", 642 PAINT		
					1,800		1,800	614	24612	1,800	FT	WORK ZONE DOTTED LINE, CLASS III, 6", 642 PAINT		
					490		490	614	24618	490	FT	WORK ZONE DOTTED LINE, CLASS III, 12", 642 PAINT		
					42		42	614	26400	42	FT	WORK ZONE STOP LINE, CLASS I, 740.06, TYPE I		
					28		28	615	20000	28	SY	PAVEMENT FOR MAINTAINING TRAFFIC, CLASS A		
					2,660		2,660	622	41100	2,660	FT	PORTABLE BARRIER, UNANCHORED		
					680		680	622	41110	680	FT	PORTABLE BARRIER, ANCHORED		
INCIDENTALS														
							△ (19,000 LS)		100 (108)	51200 (10000)	19,000 LS	EACH	DEPARTMENT'S SHARE OF THE DISPUTE RESOLUTION ADVISOR CPM PROGRESS SCHEDULE	
						LS	LS	614	11000	LS			MAINTAINING TRAFFIC	
							18	619	16020	18	MNTH		FIELD OFFICE, TYPE C	
							LS	623	10000	LS			CONSTRUCTION LAYOUT STAKES AND SURVEYING	
							LS	624	10000	LS			MOBILIZATION	

REVISIONS	NUMBER	DATE	DESCRIPTION
	△ 1	1/24/23	REVISED QUANTITIES


MOT-4-(17.79)(18.03)

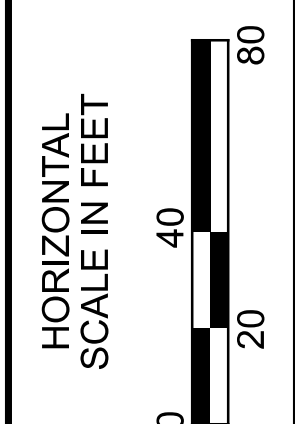
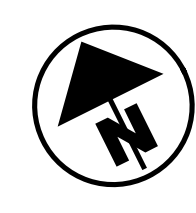
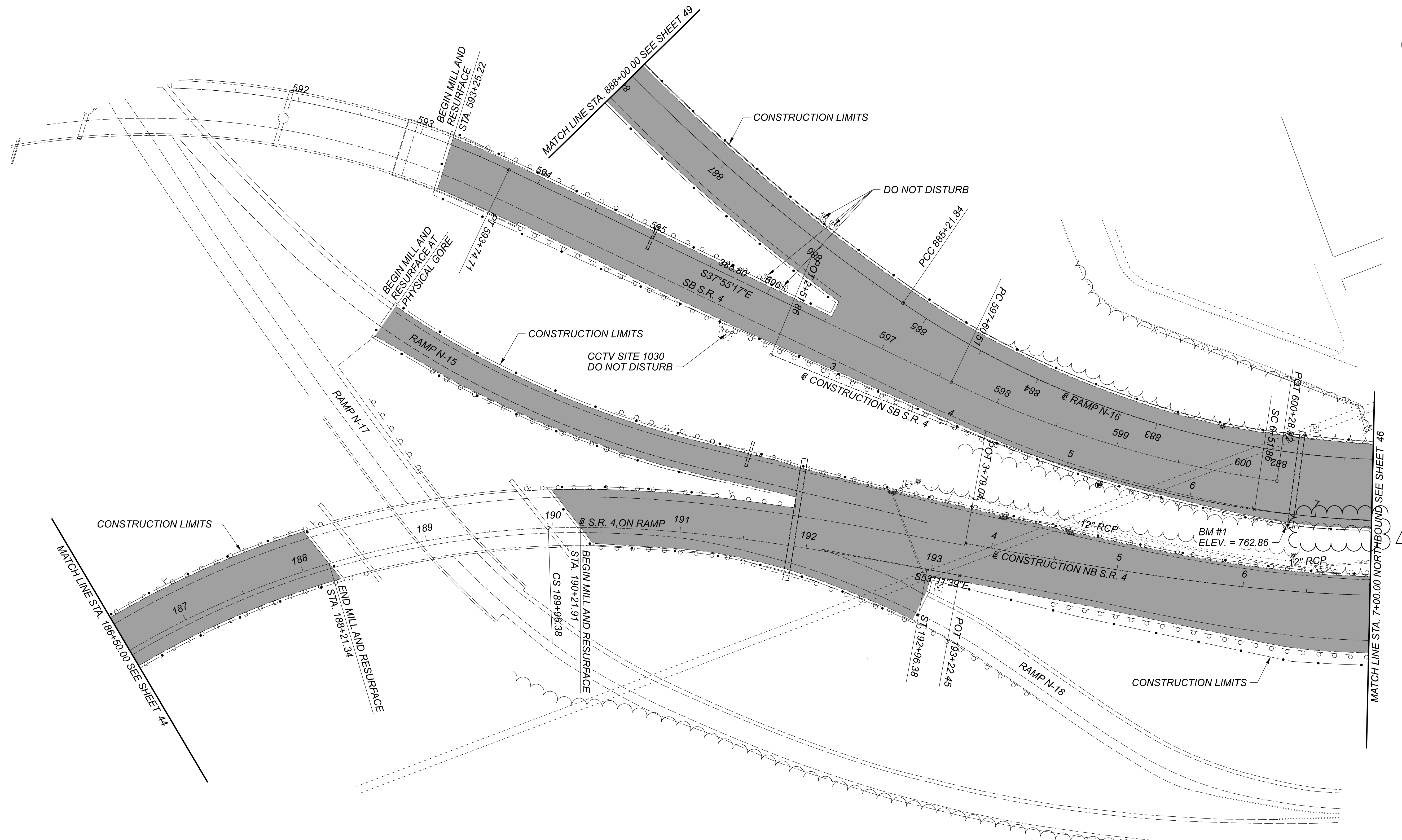
MODEL: Sheet PAPER: 34x22 (in.) DATE: 12/2/2022 TIME: 6:38:41 AM USER: CMT008
 P:\ODT\07\0886_MOT-4-17.79_18.03\101849\400-Engineering\Roadway\Sheets\101849_GS001.dgn

REF. NO.	SHEET NO.	LOCATION	STATION		SIDE	202	203	601	605	606	606	606	606	606	607	608	609	626			
			FROM	TO		GUARDRAIL REMOVED FT	EXCAVATION (APPROX. 6" DEPTH) CY	TIED CONCRETE BLOCK MAT WITH TYPE 2 UNDERLAYMENT SY	6" SHALLOW PIPE UNDERDRAINS WITH GEOTEXTILE FABRIC FT	GUARDRAIL, TYPE MGS FT	ANCHOR ASSEMBLY, MGS TYPE E EACH	ANCHOR ASSEMBLY, MGS TYPE T EACH	MGS BRIDGE TERMINAL ASSEMBLY, TYPE 1 EACH	MGS BRIDGE TERMINAL ASSEMBLY, TYPE 2 EACH	FENCE REMOVED AND REBUILT FT	4" CONCRETE WALK SF	CURB, TYPE 4-C FT	BARRIER REFLECTOR, TYPE 2 (ONE-WAY) EACH			
E-1	46	NB S.R. 4	8+12.65	8+18.26	LT			7													
E-2	46	NB S.R. 4	8+27.71	8+32.91	RT			30													
E-3	46	SB S.R. 4	10+78.80	10+84.73	LT			24													
F-1	46	SB S.R. 4	8+61.88	8+69.29	LT										10						
F-2	46	SB S.R. 4		8+79.72	RT										32						
F-3	46	NB S.R. 4	8+65.20	8+70.40	RT										10						
F-4	46	SB S.R. 4		10+42.36	LT										10						
F-5	46	SB S.R. 4		10+46.54	RT										27						
F-6	46	NB S.R. 4		10+23.87	RT										10						
GR-1	46	SB S.R. 4	7+92.82	8+54.80	RT	67				50.0		1								2	
GR-2	46	SB S.R. 4	7+47.02	8+43.60	LT	106				68.75		1								18	3
GR-3	46	NB S.R. 4	7+61.18	8+34.79	LT	78				50.0			1							18	2
GR-4	46	NB S.R. 4	7+79.73	8+49.14	RT	80				50.0			1							18	2
GR-5	46	NB S.R. 4	10+38.80	10+84.91	RT	55				50.0				1							2
GR-6	46, 48	NB S.R. 4	10+39.76	12+13.85	LT	179				162.5		1									3
GR-7	46, 48	SB S.R. 4	10+61.28	13+85.74	RT	320				250.0	1		1							18	7
GR-8	46	SB S.R. 4	10+60.27	11+38.03	LT	79				50.0			1							18	2
UD-1	46	SB S.R. 4	8+00.00	8+35.90	LT				34												
UD-2	46	NB S.R. 4	8+00.00	8+28.44	LT				25												
UD-3	46	NB S.R. 4	10+49.34	11+00.00	LT				50												
UD-4	46	SB S.R. 4	10+71.13	11+25.00	LT				51												
W-1	46	WEBSTER ST	3' BEYOND MOT-00004-17.790L DECK EDGE TO 3' BEYOND MOT-00004-17.790R DECK EDGE		LT		43									2327					
W-2	46	WEBSTER ST	3' BEYOND MOT-00004-17.790L DECK EDGE TO 3' BEYOND MOT-00004-17.790R DECK EDGE		RT		43									2296					
TOTALS CARRIED TO GENERAL SUMMARY						958	86	61	160	731.3	1	2	5	3	99	4623	90	23			

ESTIMATED QUANTITIES

REVISIONS	NUMBER	DATE	DESCRIPTION
	1	12/09/22	REVISED QUANTITIES

DESIGN AGENCY

 DESIGNER: JLL
 REVIEWER: TWG 08-12-22
 PROJECT ID: 101849
 SHEET: 42 TOTAL: 170



PLAN - S.R. 4 ON RAMP AND S.R. 4
 STA. 186+50.00 TO STA. 7+00.00

REVISIONS	NUMBER	DATE	DESCRIPTION
1	1	12/09/22	REVISED GUARDRAIL

LEGEND
 MILL AND RESURFACE

DESIGN AGENCY

 DESIGNER
 KDW
 REVIEWER
 TWG 08-12-22
 PROJECT ID
 101849
 SHEET TOTAL
 45 170

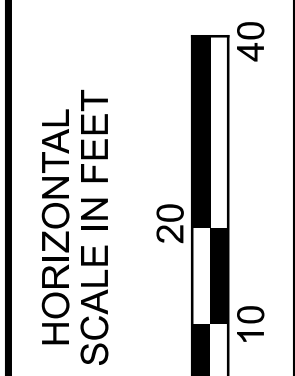
SPIRAL DATA - S.B.
 S.R. 4
 P.I. Sta. 5+19.37
 Ls = 400.00'
 $\theta_s = 14^\circ 00' 00''$
 LT = 267.51'
 ST = 134.10'
 x = 397.62'
 y = 32.44'
 k = 60.84'
 p = 2.48'
 C = 398.94'
 T.S. Sta. 2+51.86
 S.C. Sta. 6+51.86
 C.B. = S45°48'14"E

CURVE DATA - S.B.
 S.R. 4
 P.I. Sta. 8+75.09
 $\Delta = 30^\circ 30' 37''$ LT
 Dc = 07°00'00"
 (NDC = 3°30'00")
 R = 818.51'
 T = 223.23'
 L = 435.86'
 E = 29.89'
 emax = 0.0833
 (NDC=0.06)

CURVE DATA - S.B.
 S.R. 4
 P.I. Sta. 12+02.13
 $\Delta = 13^\circ 39' 50''$ LT
 Dc = 06°00'00"
 (NDC = 3°30'00")
 R = 954.93'
 T = 114.41'
 L = 227.73'
 E = 6.83'
 emax = 0.0833
 (NDC=0.06)

SPIRAL DATA - S.B.
 S.R. 4
 P.I. Sta. 14+49.34
 Ls = 400.00'
 $\theta_s = 12^\circ 00' 00''$
 LT = 267.28'
 ST = 133.89'
 x = 395.33'
 y = 55.57'
 k = 120.50'
 p = 16.94'
 C = 399.22'
 C.S. Sta. 13+15.45
 S.T. Sta. 17+15.45
 C.B. = N72°41'05"E

REVISIONS	NUMBER	DATE	DESCRIPTION
	1	12/09/22	REVISED GUARDRAIL



SPIRAL DATA - N.B.
 S.R. 4
 P.I. Sta. 6+46.55
 Ls = 400.00'
 $\theta_s = 14^\circ 00' 00''$
 LT = 267.51'
 ST = 134.10'
 x = 397.62'
 y = 32.44'
 k = 60.84'
 p = 2.48'
 C = 398.94'
 T.S. Sta. 3+79.04
 S.C. Sta. 7+79.04
 C.B. = S57°55'22"E

CURVE DATA - N.B.
 S.R. 4
 P.I. Sta. 9+47.40
 $\Delta = 23^\circ 14' 47''$ LT
 Dc = 07°00'00"
 (NDC = 3°30'00")
 R = 818.51'
 T = 168.36'
 L = 332.09'
 E = 17.14'
 emax = 0.0833
 (NDC=0.06)

CURVE DATA - N.B.
 S.R. 4
 P.I. Sta. 12+19.55
 $\Delta = 10^\circ 48' 32''$ LT
 Dc = 04°59'59"
 (NDC = 3°30'00")
 R = 1,145.96'
 T = 108.42'
 L = 216.19'
 E = 5.12'
 emax = 0.0833
 (NDC=0.06)

SPIRAL DATA - N.B.
 S.R. 4
 P.I. Sta. 14+61.04
 Ls = 400.00'
 $\theta_s = 10^\circ 00' 00''$
 LT = 267.09'
 ST = 133.72'
 x = 396.76'
 y = 46.38'
 k = 120.93'
 p = 14.14'
 C = 399.46'
 C.S. Sta. 13+27.32
 S.T. Sta. 17+27.32
 C.B. = N72°01'07"E

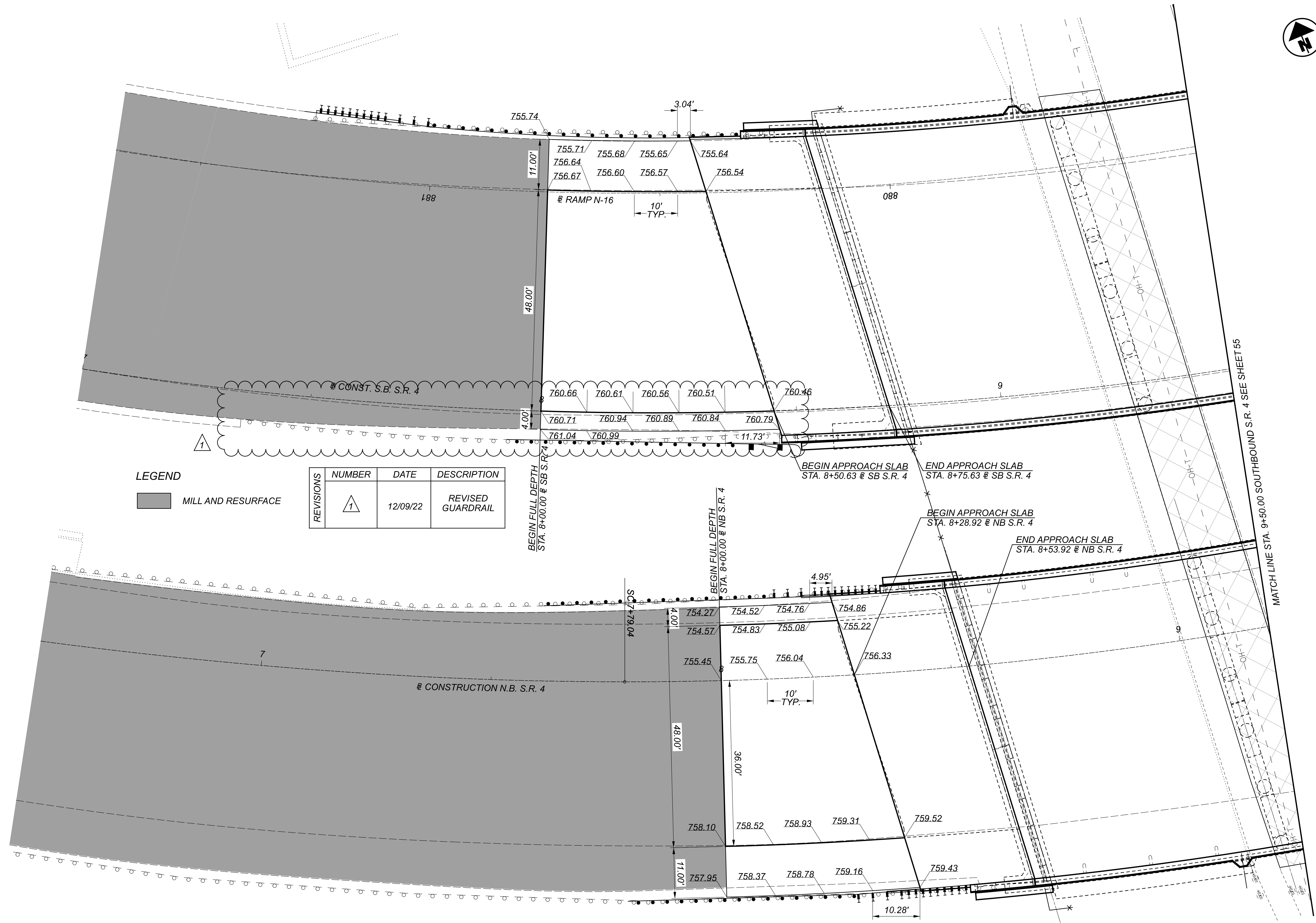
- LEGEND**
- MILL AND RESURFACE
 - ITEM 601 - TIED CONCRETE BLOCK MAT WITH TYPE 2 UNDERLAYMENT
 - ITEM 608 - 4" CONCRETE WALK TO BE PLACED BETWEEN EXISTING SIDEWALK AND WEBSTER ST. CURB

- NOTES**
1. FOR PROFILE, SEE SHEET 47
 2. FOR EXISTING AND PROPOSED STRUCTURE BLOCKS, SEE SHEETS 75 AND 114
 3. FOR PAVEMENT DETAILS, SEE SHEETS 54 AND 55
 4. FOR ESTIMATED QUANTITIES, SEE SHEET 42
 5. CONNECT TO EXISTING UNDERDRAIN
 6. CONNECT TO EXISTING UNDERDRAIN OUTLET


MOT-4-(17.79)(18.03)

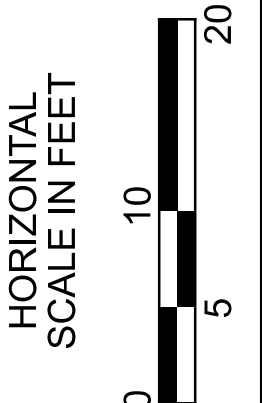
PLAN - S.R. 4
 STA. 7+00.00 TO STA. 12+00.00

DESIGN AGENCY	CARPENTER MARTY
DESIGNER	KDW
REVIEWER	TWG 08-12-22
PROJECT ID	101849
SHEET	46
TOTAL	170




LEGEND
 MILL AND RESURFACE

REVISIONS	NUMBER	DATE	DESCRIPTION
	1	12/09/22	REVISED GUARDRAIL

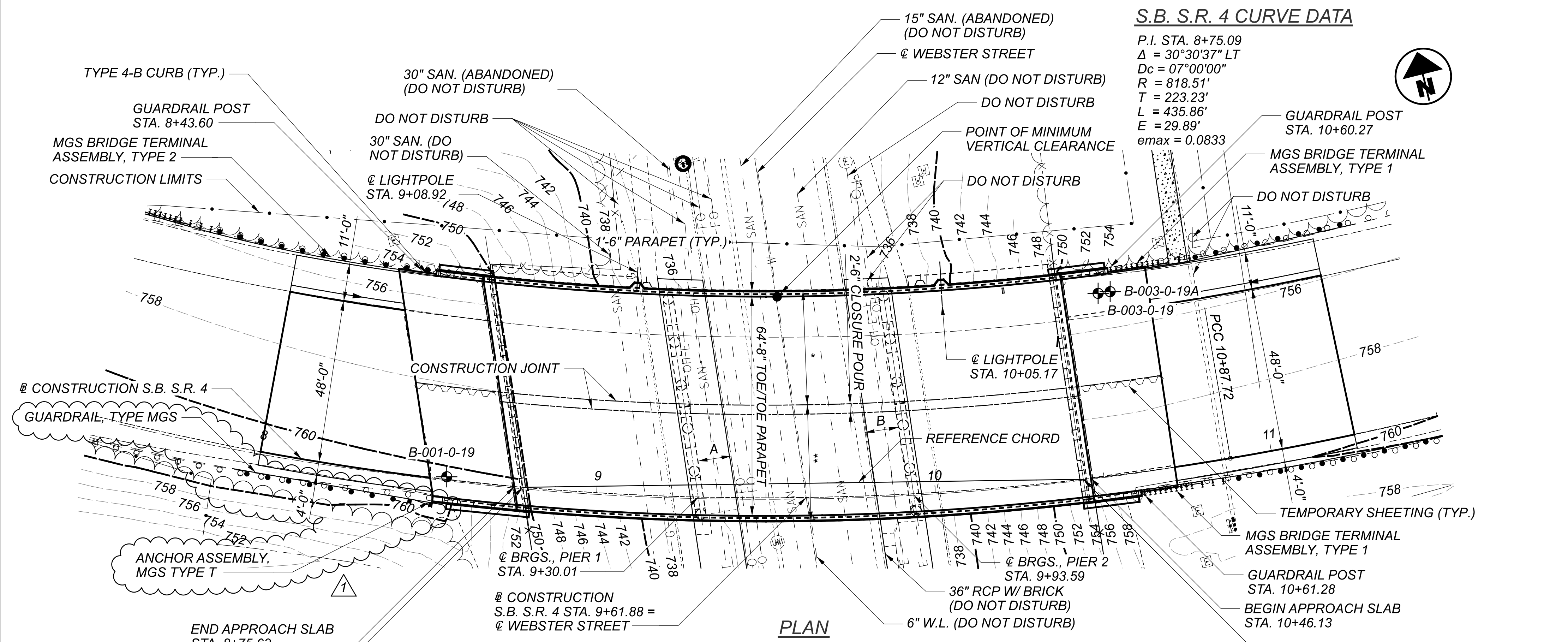


PAVEMENT DETAILS
 STA. 7+00.00 TO STA. 9+50.00

DESIGN AGENCY	
DESIGNER	JJL
REVIEWER	TWG 08-12-22
PROJECT ID	101849
SHEET	54
TOTAL	170

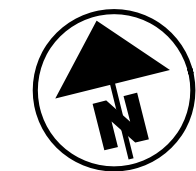
MOT-4-(17.79)(18.03)

MODEL: Plan 1 [Sheet] PAPER SIZE: 34x22 (in.) DATE: 12/8/2022 TIME: 11:24:49 AM USER: BRussell
 P:\ODT\0706886_MOT-4-17.79_18.03\101849\400-Engineering\Structures\MOT004_1779L_Sheets\101849_MOT004_1779L_SP001.dgn



S.B. S.R. 4 CURVE DATA

P.I. STA. 8+75.09
 $\Delta = 30^\circ 30' 37''$ LT
 $D_c = 07^\circ 00' 00''$
 $R = 818.51'$
 $T = 223.23'$
 $L = 435.86'$
 $E = 29.89'$
 $e_{max} = 0.0833$



BENCHMARK DATA

BM #1 STA. 6+78.20, ELEV. 762.86, OFFSET 9.37', RT
 BM #2 STA. 10+59.04, ELEV. 762.07, OFFSET 6.97', RT
 BM #3 STA. 15+90.15, ELEV. 758.46, OFFSET 42.28', LT

FOR ADDITIONAL BENCHMARK INFORMATION SEE ROADWAY PLAN SHEET 5/170

NOTES

DESIGN TRAFFIC:
 2024 ADT = 41,100 2024 ADTT = 2877
 2044 ADT = 45,100 2044 ADTT = 3157
 DIRECTIONAL DISTRIBUTION = 0.53

EARTHWORK LIMITS SHOWN ARE APPROXIMATE. ACTUAL SLOPES SHALL CONFORM TO PLAN CROSS SECTIONS.

LEGEND

- ⊕ BORING LOCATION
- ⊕ BENCHMARK
- * - PHASE 3 CONSTRUCTION = 33'-8"
- ** - PHASE 4 CONSTRUCTION = 34'-4"
- 14'-6" REQUIRED MINIMUM VERTICAL CLEARANCE
- 14'-11 1/8" EXISTING MINIMUM VERTICAL CLEARANCE
- 15'-2 3/8" PROPOSED MINIMUM VERTICAL CLEARANCE
- A: 4'-0" REQUIRED MINIMUM HORIZONTAL CLEARANCE
- 9'-10" ACTUAL MINIMUM HORIZONTAL CLEARANCE
- B: 4'-0" REQUIRED MINIMUM HORIZONTAL CLEARANCE
- 9'-9 1/4" ACTUAL MINIMUM HORIZONTAL CLEARANCE

EXISTING STRUCTURE

TYPE: CONTINUOUS STEEL ROLLED BEAM WITH REINFORCED CONCRETE DECK AND SUBSTRUCTURES

SPANS: 51'-2 1/8"±, 63'-6 7/8"±, 50'-7 3/4"± (MEASURED ALONG REFERENCE CHORD)

ROADWAY: 64'-8"± TOE/TOE PARAPET

VEHICULAR LIVE LOAD: CF = 2000(57)

SKEW: VARIES (W/ RESPECT TO REFERENCE CHORD)

WEARING SURFACE: 1 1/2"± ASPHALT OVERLAY

APPROACH SLABS: AS-1-54 (25' LONG)

ALIGNMENT: 7°00'± CURVE TO THE LEFT

SUPERELEVATION: 1" FT.

STRUCTURAL FILE NUMBER: 5760518

DATE BUILT: 1961 REHABILITATED: 1984 AND 2003

DISPOSITION: TO BE REHABILITATED

PROPOSED STRUCTURE

PROPOSED WORK: RAISE SUPERSTRUCTURE, NEW COMPOSITE REINFORCED CONCRETE DECK AND PARAPETS, CONVERT ABUTMENTS TO SEMI-INTEGRAL, FIELD PAINT STRUCTURAL STEEL

SPANS: 51'-2 1/8"±, 63'-6 7/8"±, 50'-7 3/4"± (MEASURED ALONG REFERENCE CHORD)

ROADWAY: 64'-8" TOE/TOE PARAPET

VEHICULAR LIVE LOAD: HL-93 (PROPOSED WORK), CF = 2000(57) (EXISTING)

FUTURE WEARING SURFACE: 0.06 KSF

SKEW: VARIES (W/ RESPECT TO REFERENCE CHORD)

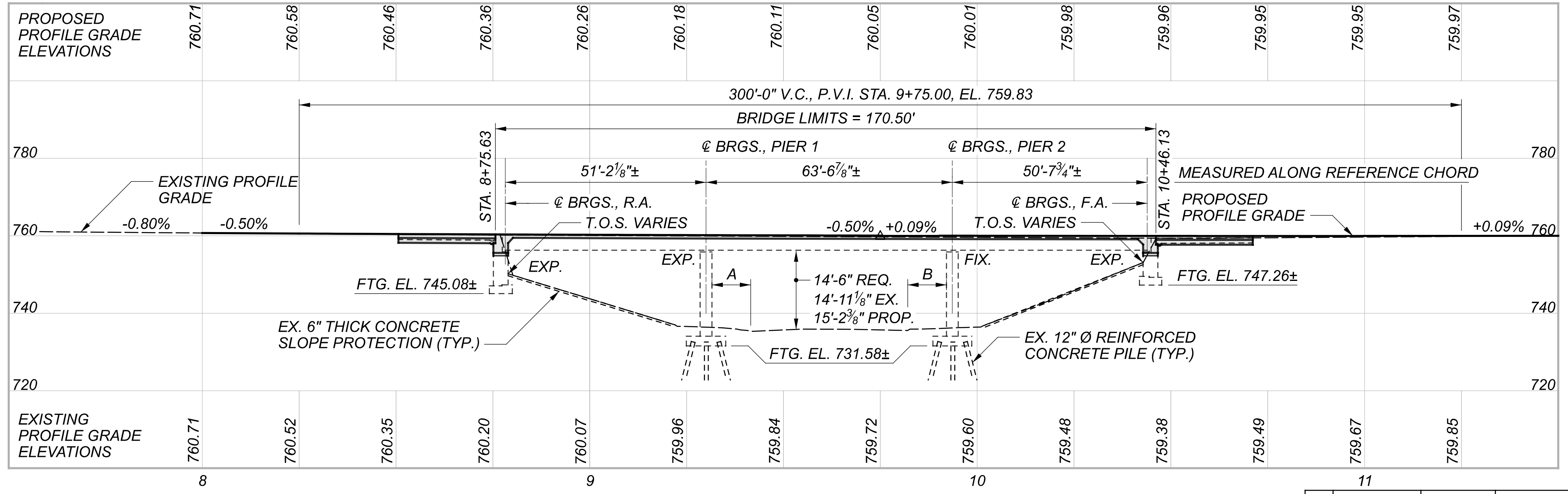
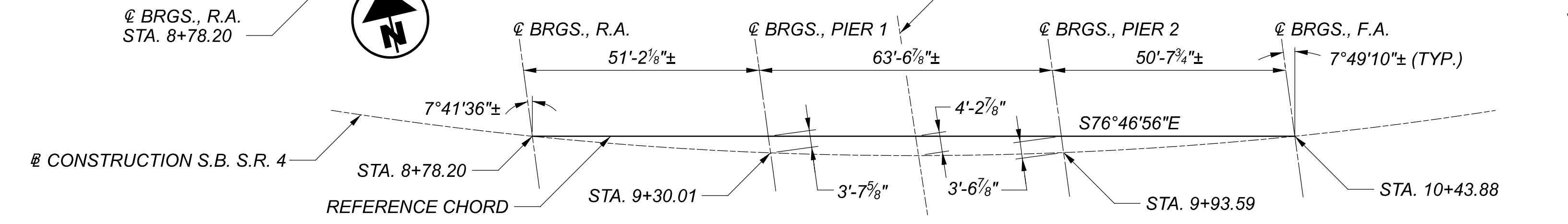
APPROACH SLABS: 25'-0" LONG (AS-1-15, AS-2-15 TYPE B)

ALIGNMENT: 7°00'± CURVE TO THE LEFT

SUPERELEVATION: 0.0833 FT/FT

COORDINATES: LATITUDE 39°46'15.56" N
 LONGITUDE 84°11'01.71" W

DECK AREA: 11600 SF

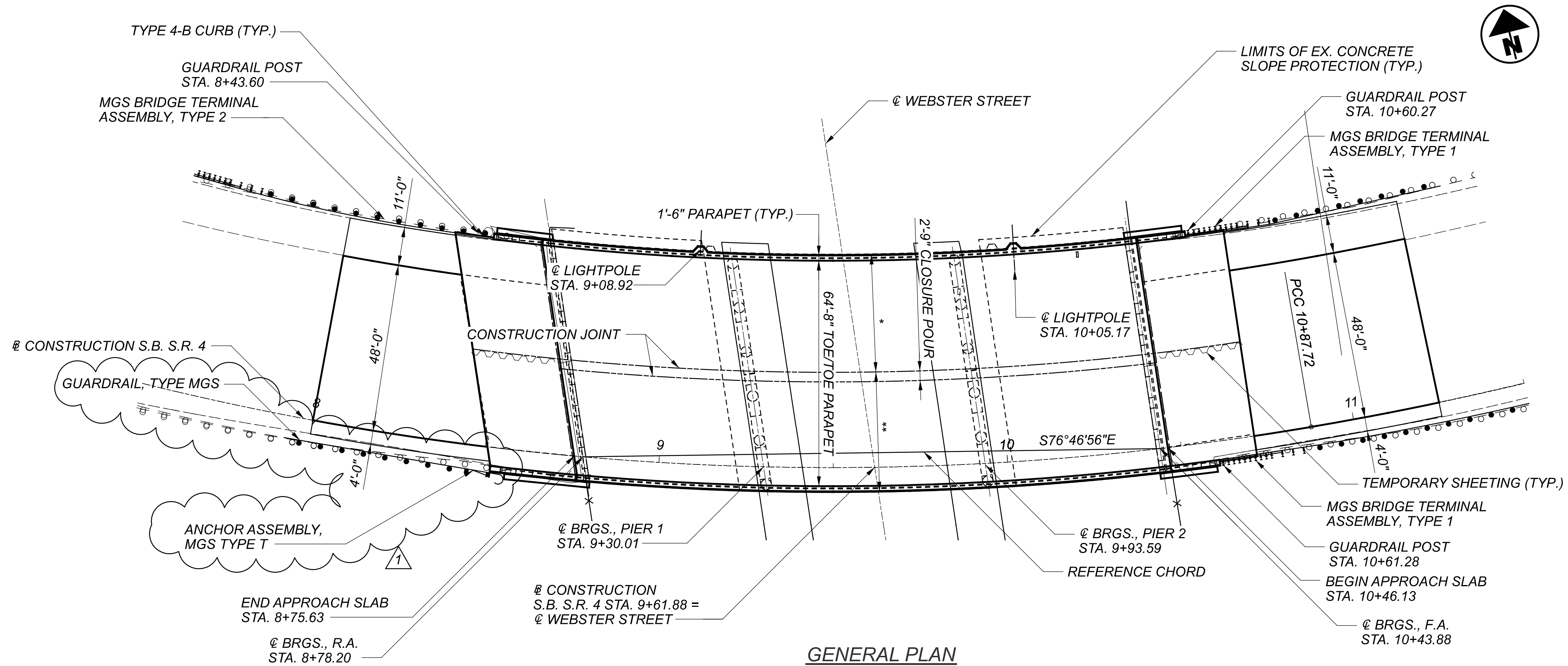


PROFILE ALONG @ CONSTRUCTION S.B. S.R. 4

REVISIONS	NUMBER	DATE	DESCRIPTION
1	1	11-30-22	MODIFIED PARAPET, REMOVED GUARDRAIL, ADDED ANCHOR ASSEMBLY

SITE PLAN
 BRIDGE NO. MOT-00004-17.790L
 S.R. 4 OVER WEBSTER STREET

SFN	5760518
DESIGN AGENCY	CARPENTER MARTY
DESIGNER/CHECKER	AMR / STK
REVIEWER	WHM
PROJECT ID	101849
SUBSET	1 / 39
SHEET	75 / 170

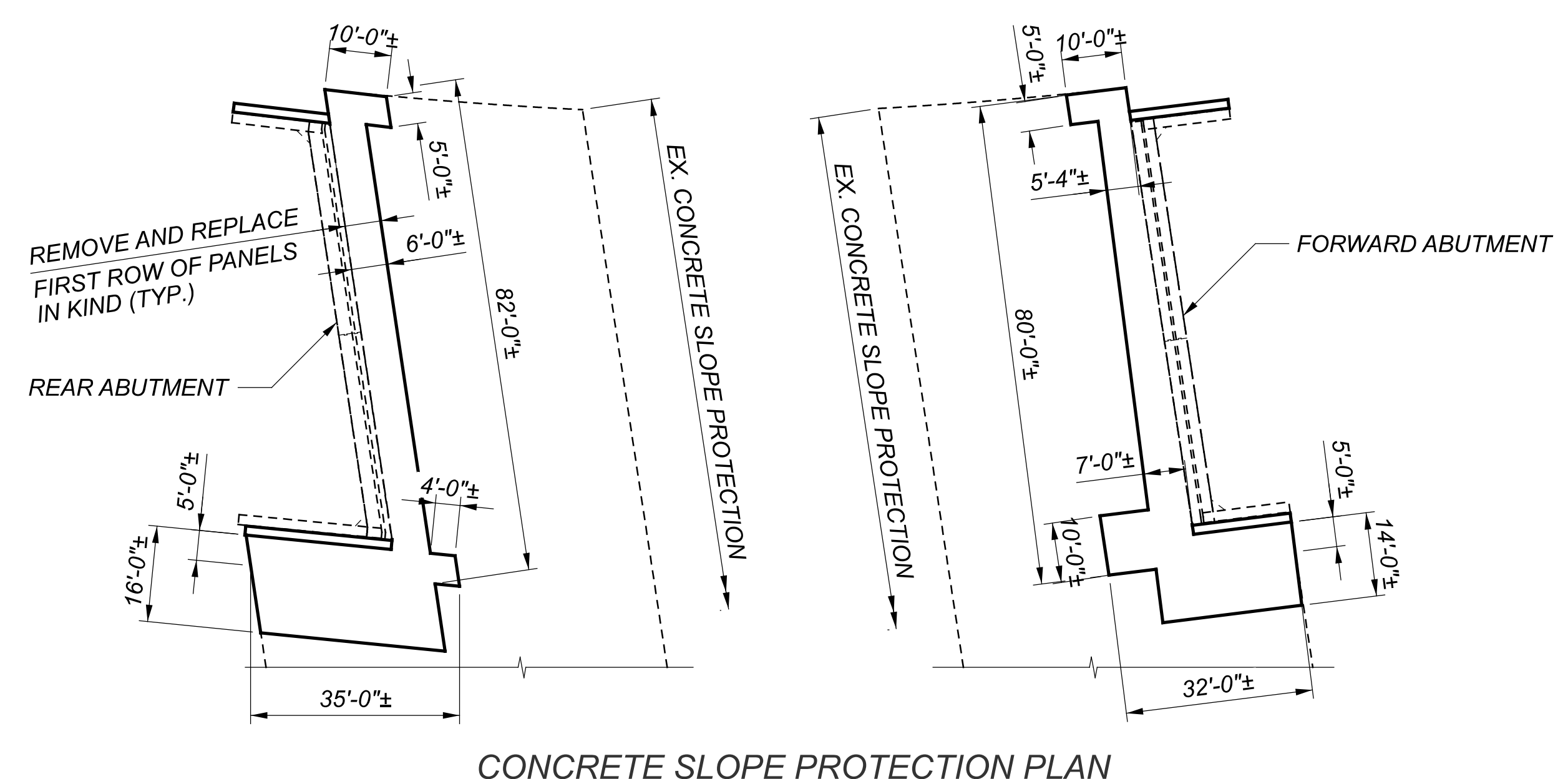


S.B. S.R. 4 CURVE DATA

P.I. STA. 8+75.09
 $\Delta = 30^\circ 30' 37" \text{ LT}$
 $D_c = 07^\circ 00' 00"$
 $R = 818.51'$
 $T = 223.23'$
 $L = 435.86'$
 $E = 29.89'$
 $e_{max} = 0.0833$

LEGEND

* - PHASE 3 CONSTRUCTION = 33'-8"
 ** - PHASE 4 CONSTRUCTION = 34'-4"



REVISIONS	NUMBER	DATE	DESCRIPTION
1	1	11-30-22	MODIFIED PARAPET, REMOVED GUARDRAIL, ADDED ANCHOR ASSEMBLY

GENERAL PLAN
 BRIDGE NO. MOT-00004-17.790L
 S.R. 4 OVER WEBSTER STREET

SFN	5760518
DESIGN AGENCY	CARPENTER MARTY
DESIGNER	MTJ
CHECKER	GDJ
REVIEWER	WHM
PROJECT ID	101849
SUBSET	2
TOTAL	39
SHEET	76
TOTAL	170

MOT-4-(17.79)(18.03)

MODEL: Sheet PAPER: 34x22 (in.) DATE: 12/8/2022 TIME: 11:24:56 AM USER: BRUSSELL
 P:\ODT\070686_MOT-4-17.79_18.03\101849\40b-Engineering\Structures\MOT004_1779L\Sheets\101849_MOT004_1779L_SC001.dgn

ESTIMATED QUANTITIES					DESIGN: AMR DATE: 8-10-22			CHECK: BWR DATE: 8-10-22	
ITEM	EXTENSION	TOTAL	UNIT	DESCRIPTION	ABUT.	PIERS	SUPER.	GEN.	SHEET #
202	11203	LS	-	PORTIONS OF STRUCTURE REMOVED, OVER 20 FOOT SPAN, AS PER PLAN				LS	71, 93
202	22900	267	SY	APPROACH SLAB REMOVED				267	
202	23500	1492	SY	WEARING COURSE REMOVED				1492	
202	32800	211	SY	CONCRETE SLOPE PROTECTION REMOVED				211	
203	10000	499	CY	EXCAVATION				499	
204	30010	60	CY	GRANULAR MATERIAL, TYPE B				60	
204	50001	683	SY	GEOTEXTILE FABRIC, AS PER PLAN				683	109
503	11100	LS	-	COFFERDAMS AND EXCAVATION BRACING	LS				
503	21300	LS	-	UNCLASSIFIED EXCAVATION	LS				
509	10000	44799	LB	EPOXY COATED STEEL REINFORCEMENT	7616		725	36458	
509	26000	18697	LB	GALVANIZED STEEL REINFORCEMENT			18697		
509	30020	35418	FT	NO. 4 DEFORMED GFRP REINFORCEMENT			35418		
509	30030	50940	FT	NO. 5 DEFORMED GFRP REINFORCEMENT			50940		
509	30040	29379	FT	NO. 6 DEFORMED GFRP REINFORCEMENT			29379		
510	10000	506	EACH	DOWEL HOLES WITH NONSHRINK, NONMETALLIC GROUT	506				
511	33501	2	EACH	SEMI-INTEGRAL DIAPHRAGM GUIDE, AS PER PLAN	2				72, 90
511	34446	408	CY	CLASS QC2 CONCRETE WITH QC/QA, BRIDGE DECK			408		
511	34450	64	CY	CLASS QC2 CONCRETE WITH QC/QA, BRIDGE DECK (PARAPET)			64		
511	44110	57	CY	CLASS QC1 CONCRETE, ABUTMENT NOT INCLUDING FOOTING	57				
511	81300	2	EACH	CONCRETE, MISC.: AESTHETIC TEST PANEL				2	72
512	10100	945	SY	SEALING OF CONCRETE SURFACES (EPOXY-URETHANE)	80	316	490	59	
512	33000	6	SY	TYPE 2 WATERPROOFING	6				
512	74000	341	SY	REMOVAL OF EXISTING COATINGS FROM CONCRETE SURFACES	25	316			
513	10201	5906	LB	STRUCTURAL STEEL MEMBERS, LEVEL UF, AS PER PLAN			5906		71
513	20000	6720	EACH	WELDED STUD SHEAR CONNECTORS			6720		
514	00050	13984	SF	SURFACE PREPARATION OF EXISTING STRUCTURAL STEEL			13984		
514	00056	13984	SF	FIELD PAINTING OF EXISTING STRUCTURAL STEEL, PRIME COAT			13984		
514	00060	14499	SF	FIELD PAINTING OF STRUCTURAL STEEL, INTERMEDIATE COAT			14499		
514	00066	14499	SF	FIELD PAINTING OF STRUCTURAL STEEL, FINISH COAT			14499		
514	00504	22	MNHR	GRINDING FINES, TEARS, SLIVERS ON EXISTING STRUCTURAL STEEL			22		
514	10000	13	EACH	FINAL INSPECTION REPAIR			13		
514	27700	381	SF	FIELD PAINTING, MISC.: COATING OF BEAM ENDS			381		71
516	13600	110	SF	1" PREFORMED EXPANSION JOINT FILLER			110		
516	13900	220	SF	2" PREFORMED EXPANSION JOINT FILLER			220		
516	14020	166	FT	SEMI-INTEGRAL ABUTMENT EXPANSION JOINT SEAL			166		
516	44100	16	EACH	ELASTOMERIC BEARING WITH INTERNAL LAMINATES AND LOAD PLATE (NEOPRENE) (11" X 17" X 2.049" WITH A 12" X 18" X 1 1/2" LOAD PLATE)			16		
516	44100	8	EACH	ELASTOMERIC BEARING WITH INTERNAL LAMINATES AND LOAD PLATE (NEOPRENE) (12" X 18.5" X 2.049" WITH A 13" X 26" X VARIES LOAD PLATE)			8		
516	44100	8	EACH	ELASTOMERIC BEARING WITH INTERNAL LAMINATES AND LOAD PLATE (NEOPRENE) (12" X 18.5" X 2.499" WITH A 13" X 19 1/2" X VARIES LOAD PLATE)			8		
516	47001	LS	-	JACKING AND TEMPORARY SUPPORT OF SUPERSTRUCTURE, AS PER PLAN			LS		71
518	12200	1	EACH	SCUPPERS, INCLUDING SUPPORTS			1		
518	21200	17	CY	POROUS BACKFILL WITH GEOTEXTILE FABRIC	17				
518	40000	150	FT	6" PERFORATED CORRUGATED PLASTIC PIPE	150				
518	40010	86	FT	6" NON-PERFORATED CORRUGATED PLASTIC PIPE, INCLUDING SPECIALS	86				
526	25011	375	SY	REINFORCED CONCRETE APPROACH SLABS WITH QC/QA (T=15"), AS PER PLAN			375		71, 103-106
526	90020	74	SY	TYPE B INSTALLATION			74		
SPECIAL	53013000	1423	SF	FORM LINER	259		1164		72
601	21000	211	SY	CONCRETE SLOPE PROTECTION	211				
607	39900	330	FT	VANDAL PROTECTION FENCE, 6' STRAIGHT, COATED FABRIC			330		71
840	23000	329	CY	SELECT GRANULAR BACKFILL	329				
844	10001	59	SF	CONCRETE PATCHING WITH GALVANIC ANODE PROTECTION, AS PER PLAN	50	9			72
863	00100	1377	SY	GEOGRID, TYPE P1	1377				

1

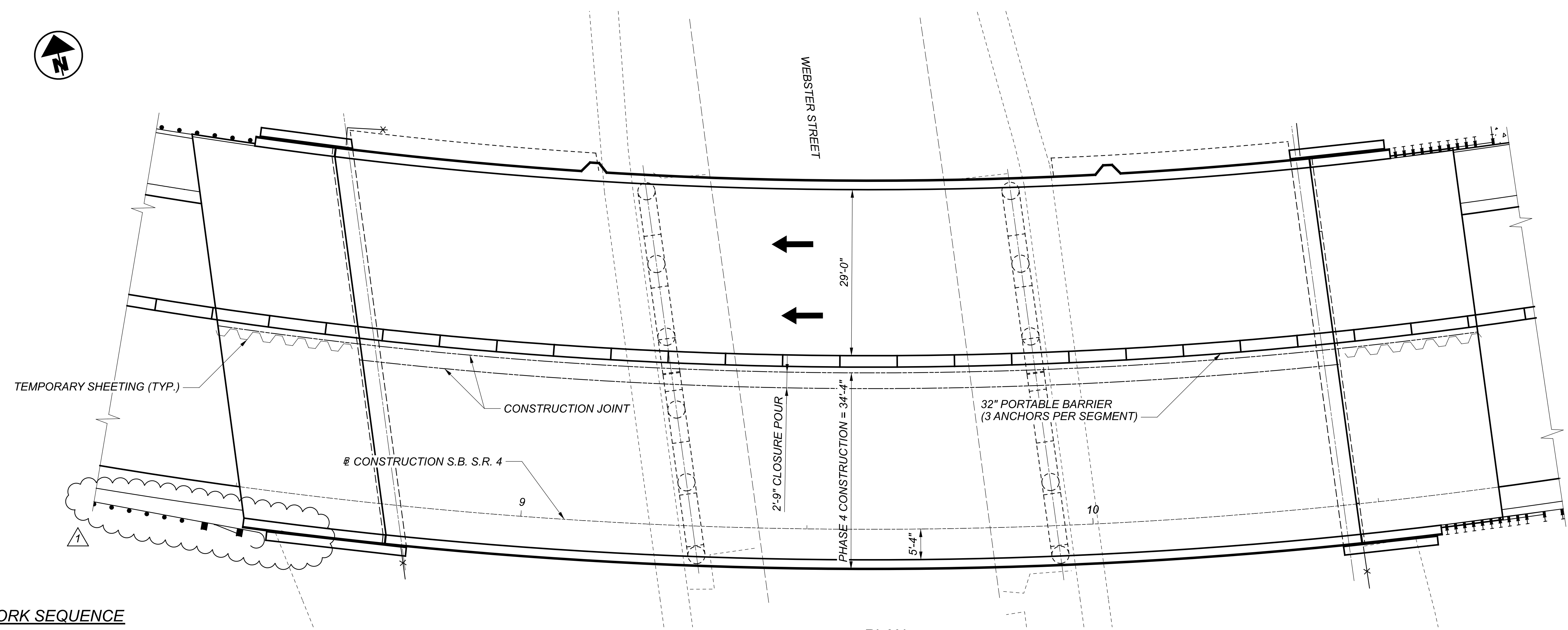
1

1

REVISIONS	NUMBER	DATE	DESCRIPTION
	1	11-30-22	REVISED QUANTITY

ESTIMATED QUANTITIES
 BRIDGE NO. MOT-00004-17.790L
 S.R. 4 OVER WEBSTER STREET

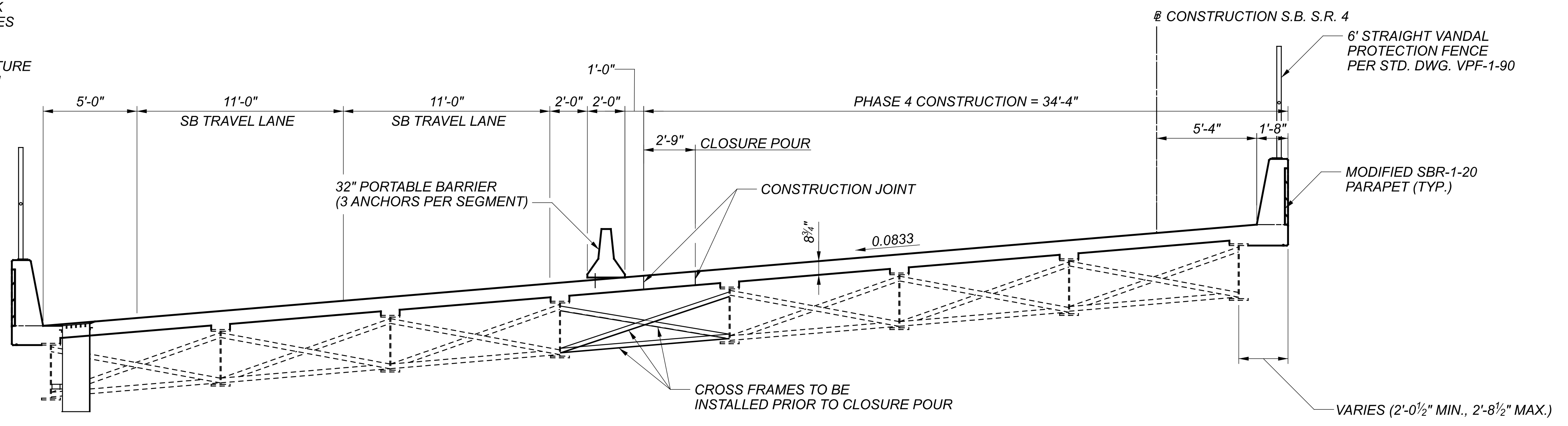
SFN	5760518
DESIGNER	STK
CHECKER	BWR
REVIEWER	WHM
DATE	8-10-22
PROJECT ID	101849
SUBSET	3
TOTAL	39
SHEET	77
TOTAL	170



PLAN

WORK SEQUENCE

1. CONSTRUCT REMAINING PORTIONS OF ABUTMENTS.
2. RAISE BEAMS 5-8, PERFORM FATIGUE RETROFIT WORK AND INSTALL BOTTOM FLANGE STRENGTHENED PLATES ON EXISTING BEAMS.
3. CONSTRUCT REMAINING PORTIONS OF SUPERSTRUCTURE INCLUDING THE DECK, PARAPET, VANDAL PROTECTION FENCE AND APPROACH SLABS.

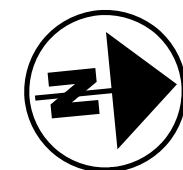


PHASE 4 CONSTRUCTION

REVISIONS	NUMBER	DATE	DESCRIPTION
1	1	11-30-22	MODIFIED PARAPET, REMOVED GUARDRAIL, ADDED ANCHOR ASSEMBLY

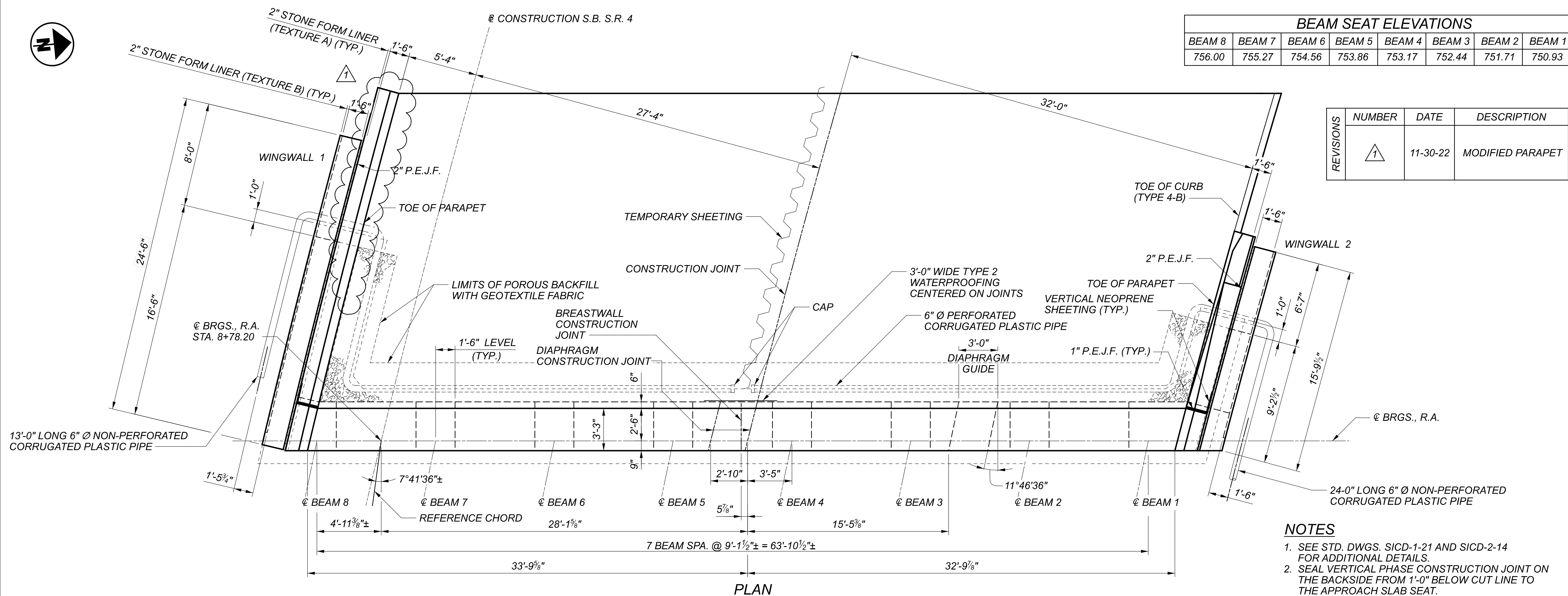
PHASE 4 CONSTRUCTION
 BRIDGE NO. MOT-00004-17.790L
 S.R. 4 OVER WEBSTER STREET

SFN	5760518
DESIGN AGENCY	CARPENTER MARTY
DESIGNER	AMR
CHECKER	STK
REVIEWER	WHM
PROJECT ID	101849
SUBSET	7
TOTAL	39
SHEET	81
TOTAL	170



BEAM SEAT ELEVATIONS							
BEAM 8	BEAM 7	BEAM 6	BEAM 5	BEAM 4	BEAM 3	BEAM 2	BEAM 1
756.00	755.27	754.56	753.86	753.17	752.44	751.71	750.93

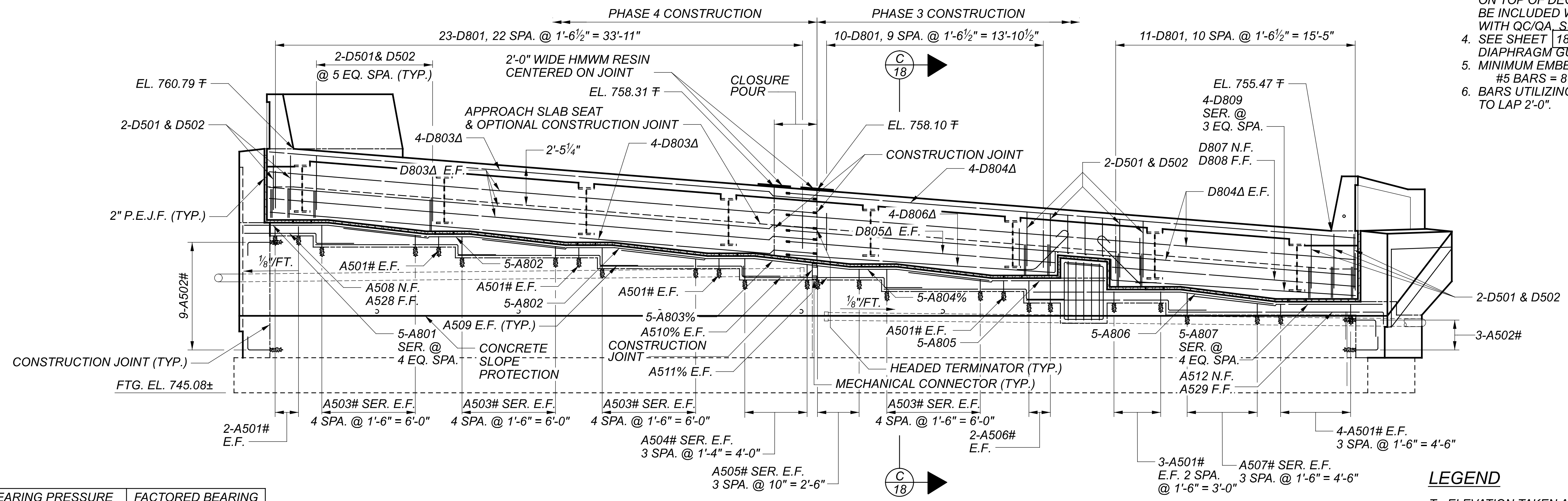
REVISIONS	NUMBER	DATE	DESCRIPTION
	1	11-30-22	MODIFIED PARAPET



PLAN

NOTES

- SEE STD. DWGS. SICD-1-21 AND SICD-2-14 FOR ADDITIONAL DETAILS.
- SEAL VERTICAL PHASE CONSTRUCTION JOINT ON THE BACKSIDE FROM 1'-0" BELOW CUT LINE TO THE APPROACH SLAB SEAT.
- PAYMENT FOR 2'-0" WIDE HMWM RESIN CENTERED ON TOP OF DECK CONSTRUCTION JOINTS SHALL BE INCLUDED WITH ITEM 511 - CLASS QC2 CONCRETE WITH QC/QA SUPERSTRUCTURE.
- SEE SHEET 18/39 FOR ADDITIONAL NOTES AND DIAPHRAGM GUIDE REINFORCING DETAILS.
- MINIMUM EMBEDMENT DEPTH FOR DOWEL BARS:
#5 BARS = 8 INCHES
- BARS UTILIZING HEADED TERMINATORS ARE DETAILED TO LAP 2'-0".



ELEVATION

LEGEND

- ± - ELEVATION TAKEN AT BRIDGE LIMITS
- # - BAR TO BE DOWELED INTO EXISTING SUBSTRUCTURE
- % - BAR TO UTILIZE A MECHANICAL CONNECTOR
- Δ - BAR TO UTILIZE A HEADED TERMINATOR AT CLOSURE POUR
- E.F. - EACH FACE

MAX. BEARING PRESSURE (PSF)		FACTORED BEARING RESISTANCE (PSF)
STRENGTH	SERVICE	STRENGTH
12724.7	8693.8	15709.1

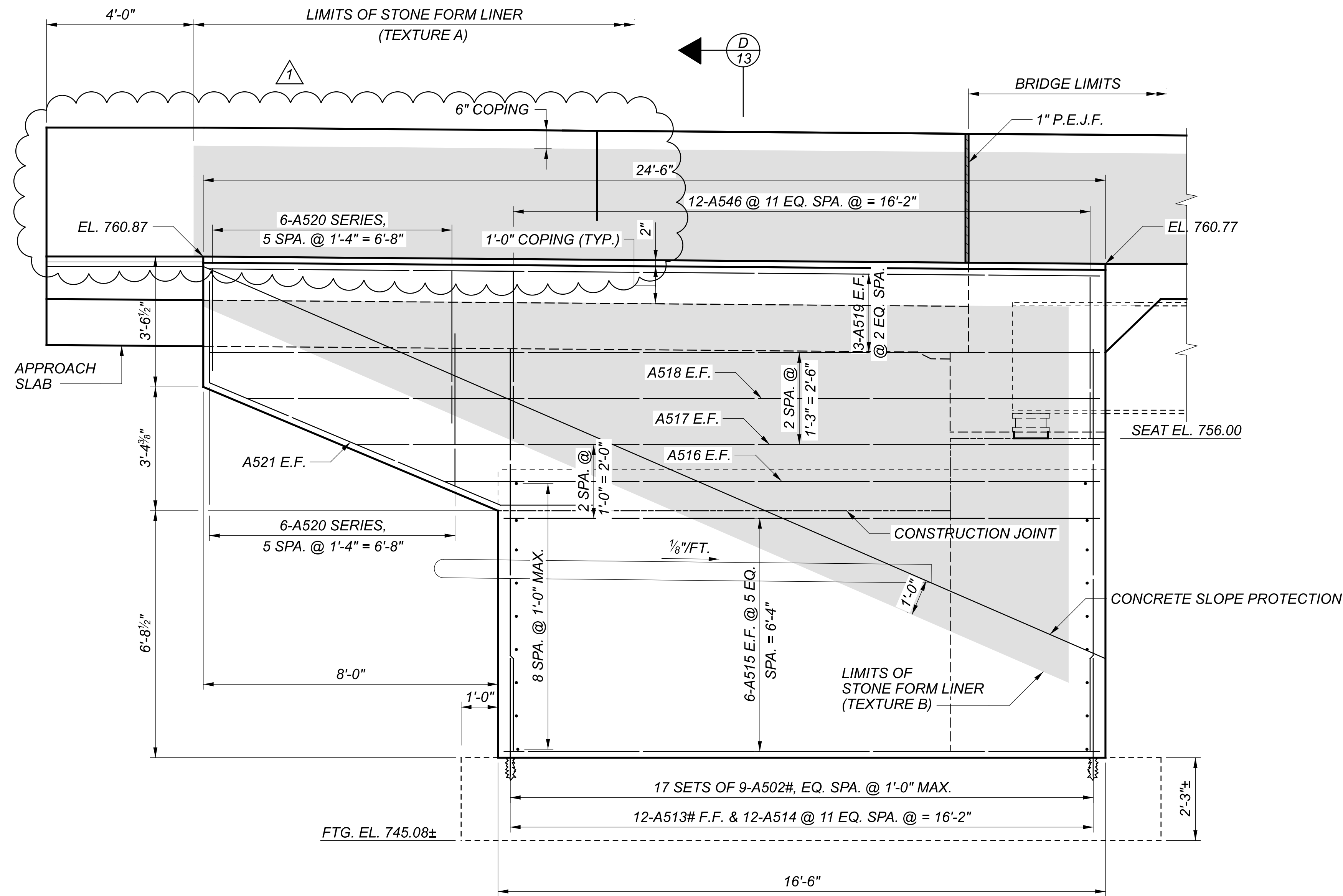
MOT-4-(17.79)(18.03)

MODEL: Sheet PAPER: 34x22 (in.) DATE: 12/8/2022 TIME: 11:25:01 AM USER: BRUSSELL
 P:\ODT\070686_MOT-4-17.79_18.03\101849\400-Engineering\Structures\MOT004_1779L\Sheets\101849_MOT004_1779L_SR001.dgn

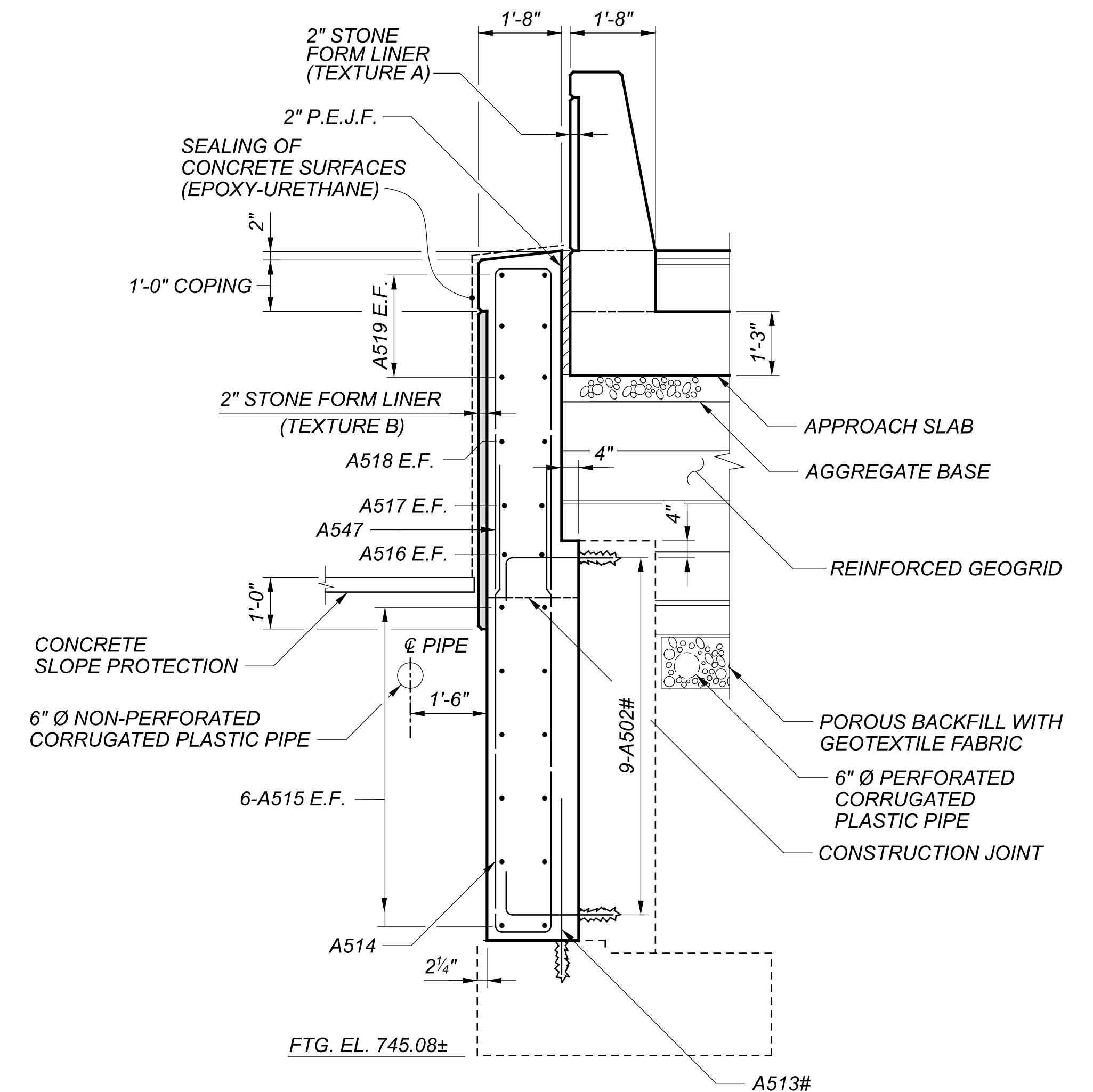
REAR ABUTMENT DETAILS
 BRIDGE NO. MOT-00004-17.790L
 S.R. 4 OVER WEBSTER STREET

SFN	5760518
DESIGN AGENCY	CARPENTER MARTY
DESIGNER	BWR
CHECKER	STK
REVIEWER	WHM
PROJECT ID	101849
SUBSET	12
TOTAL	39
SHEET	86
TOTAL	170

REVISIONS	NUMBER	DATE	DESCRIPTION
▲	1	11-30-22	MODIFIED PARAPET



WINGWALL 1 ELEVATION



SECTION D-13

NOTES

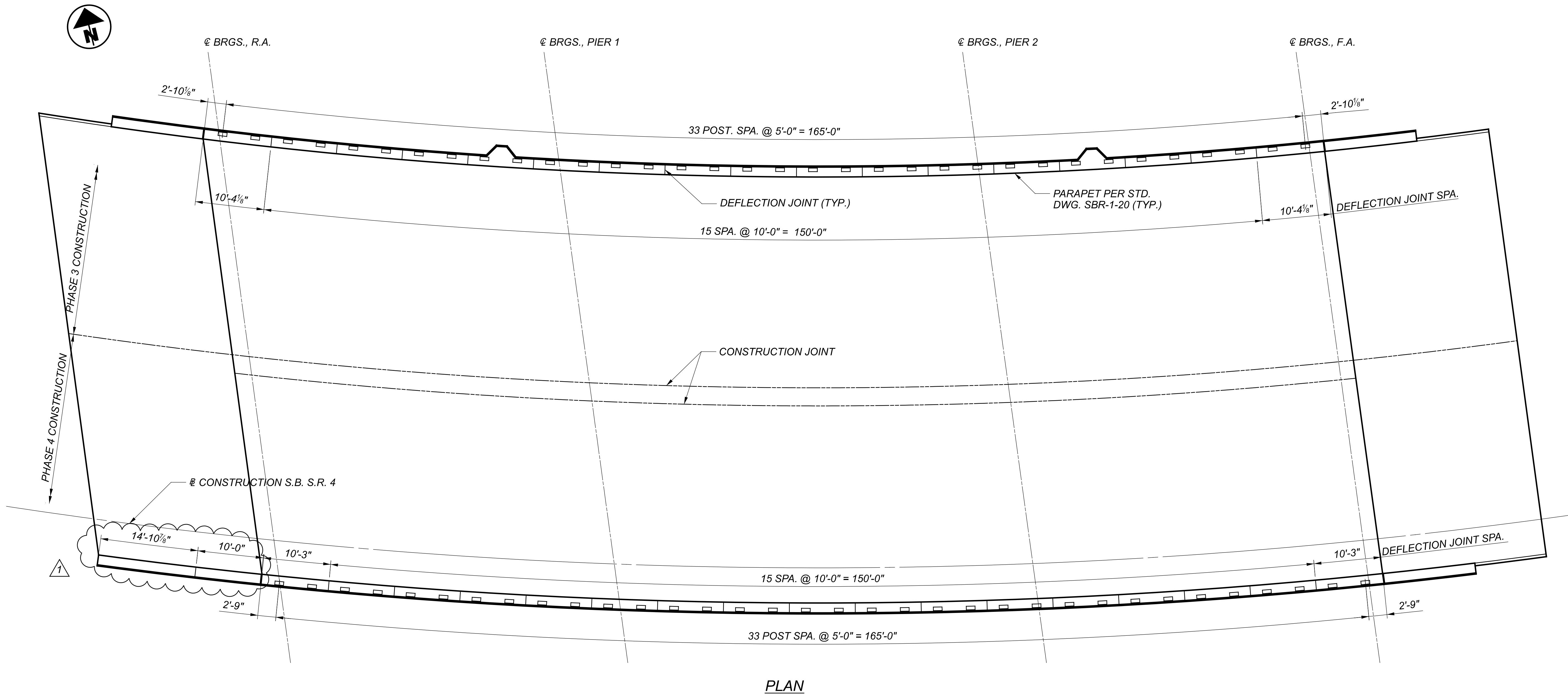
- SEE STD. DWG. SICD-1-21 FOR ADDITIONAL DETAILS.
- MINIMUM EMBEDMENT DEPTH FOR DOWEL BARS:
#5 BARS = 8 INCHES
- EXISTING CONCRETE REINFORCEMENT SHALL BE LOCATED WITH A PACHOMETER PRIOR TO DOWELING. ADJUST DOWEL LOCATIONS AS NECESSARY TO AVOID CONFLICT WITH EXISTING CONCRETE REINFORCEMENT.

LEGEND

- # - BARS TO BE DOWELED INTO EXISTING SUBSTRUCTURE
- F.F. - FAR FACE
- E.F. - EACH FACE
- [Shaded Box] - FORMLINER

REAR ABUTMENT WINGWALL DETAILS
 BRIDGE NO. MOT-00004-17.790L
 S.R. 4 OVER WEBSTER STREET

SFN	5760518
DESIGN AGENCY	CARPENTER MARTY
DESIGNER	BWR
CHECKER	STK
REVIEWER	WHM
PROJECT ID	101849
SUBSET	13
TOTAL	39
SHEET	87
TOTAL	170



PLAN

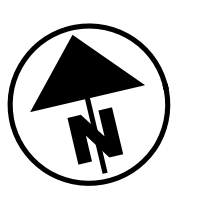
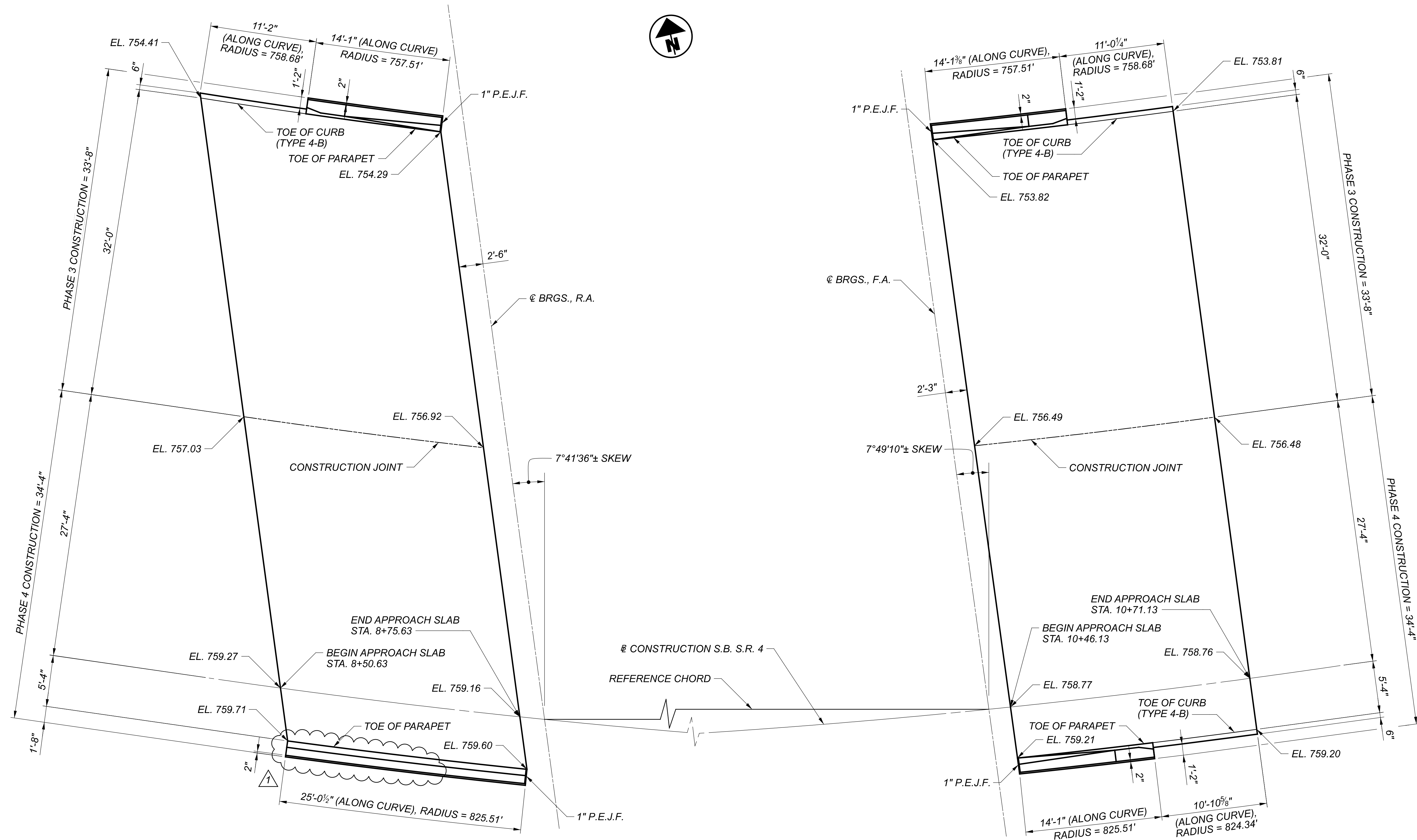
NOTES

- DEFLECTION JOINTS AND POST SPACINGS ARE MEASURED ALONG THE INSIDE FACE OF THE PARAPET.
- SEE STD. DWGS. SBR-1-20 AND VPF-1-90 FOR ADDITIONAL DETAILS.
- SEE SHEET 30/39 FOR BRIDGE DECK PARAPET REINFORCING DETAILS.
- SEE SHEET 35/39 FOR APPROACH SLAB PARAPET REINFORCING DETAILS.

REVISIONS	NUMBER	DATE	DESCRIPTION
1	1	11-30-22	MODIFIED PARAPET

PARAPET DETAILS
 BRIDGE NO. MOT-00004-17.790L
 S.R. 4 OVER WEBSTER STREET

SFN	5760518
DESIGN AGENCY	CARPENTER MARTY
DESIGNER	STK
CHECKER	BWR
REVIEWER	WHM
PROJECT ID	101849
SUBSET	29
TOTAL	39
SHEET	103
TOTAL	170



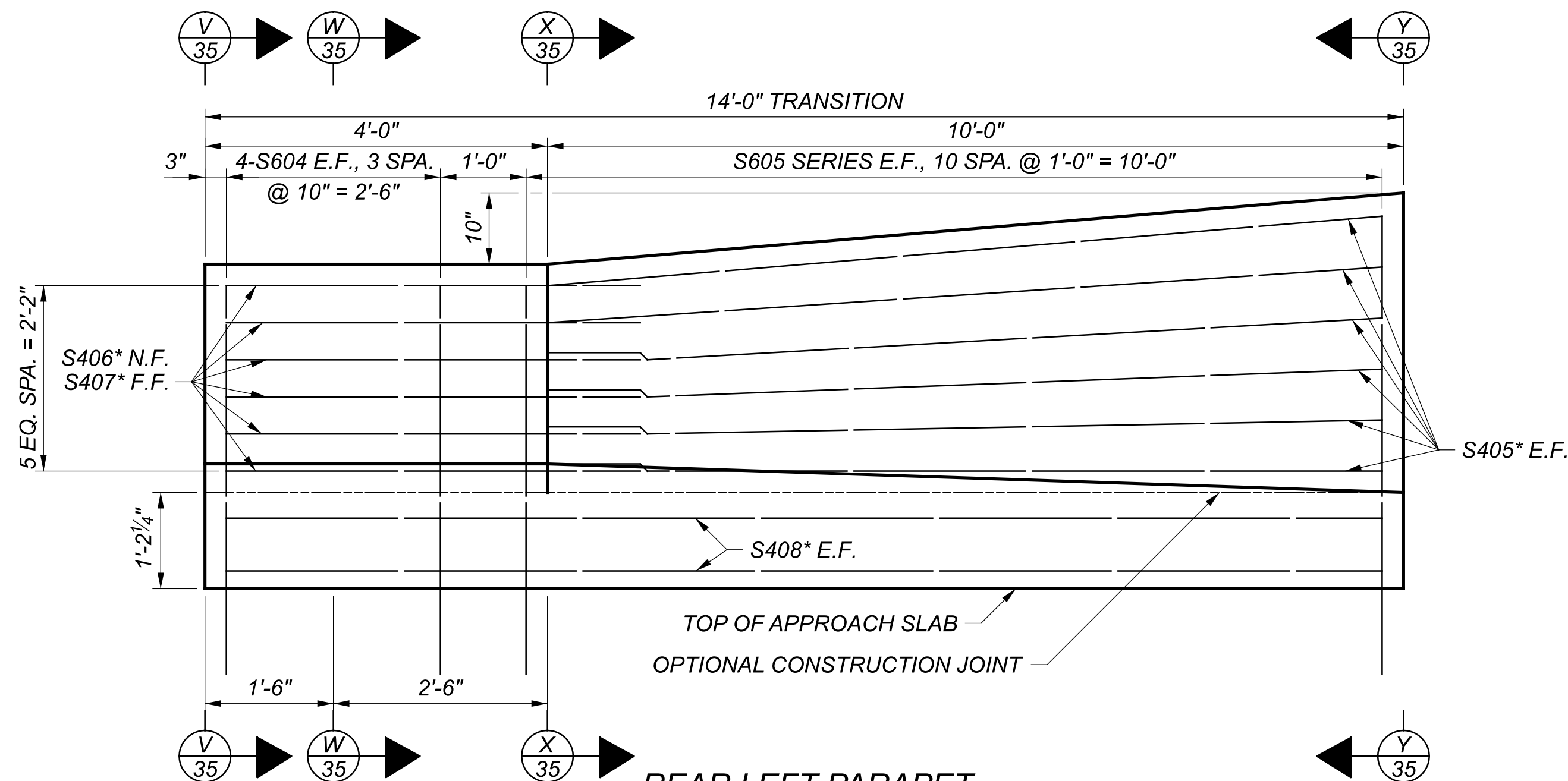
PLAN

REVISIONS	NUMBER	DATE	DESCRIPTION
	1	11-30-22	MODIFIED PARAPET

- NOTES**
- ELEVATIONS SHOWN ARE PROVIDED AT THE TOP OF CONCRETE APPROACH SLABS.
 - SEE STD. DWGS. AS-1-15 AND AS-2-15 FOR ADDITIONAL DETAILS.
 - SEE SHEET 35/39 FOR APPROACH SLAB PARAPET DETAILS.
 - TYPE 4-B CURB SHALL BE INCLUDED FOR PAYMENT WITH ITEM 526, REINFORCED CONCRETE APPROACH SLABS WITH QC/QA (T=15"), AS PER PLAN.
 - REFER TO STANDARD CONSTRUCTION DRAWING BP-5.1 FOR TYPE 4-B CURB DETAILS.

APPROACH SLAB DETAILS
 BRIDGE NO. MOT-00004-17.790L
 S.R. 4 OVER WEBSTER STREET

SFN	5760518
DESIGN AGENCY	CARPENTER & MARTY
DESIGNER	LWG
CHECKER	STK
REVIEWER	WHM
PROJECT ID	101849
SUBSET	31
TOTAL	39
SHEET	105
TOTAL	170



REAR LEFT PARAPET
 VIEWED ALONG INSIDE FACE
 FORWARD PARAPETS SIMILAR

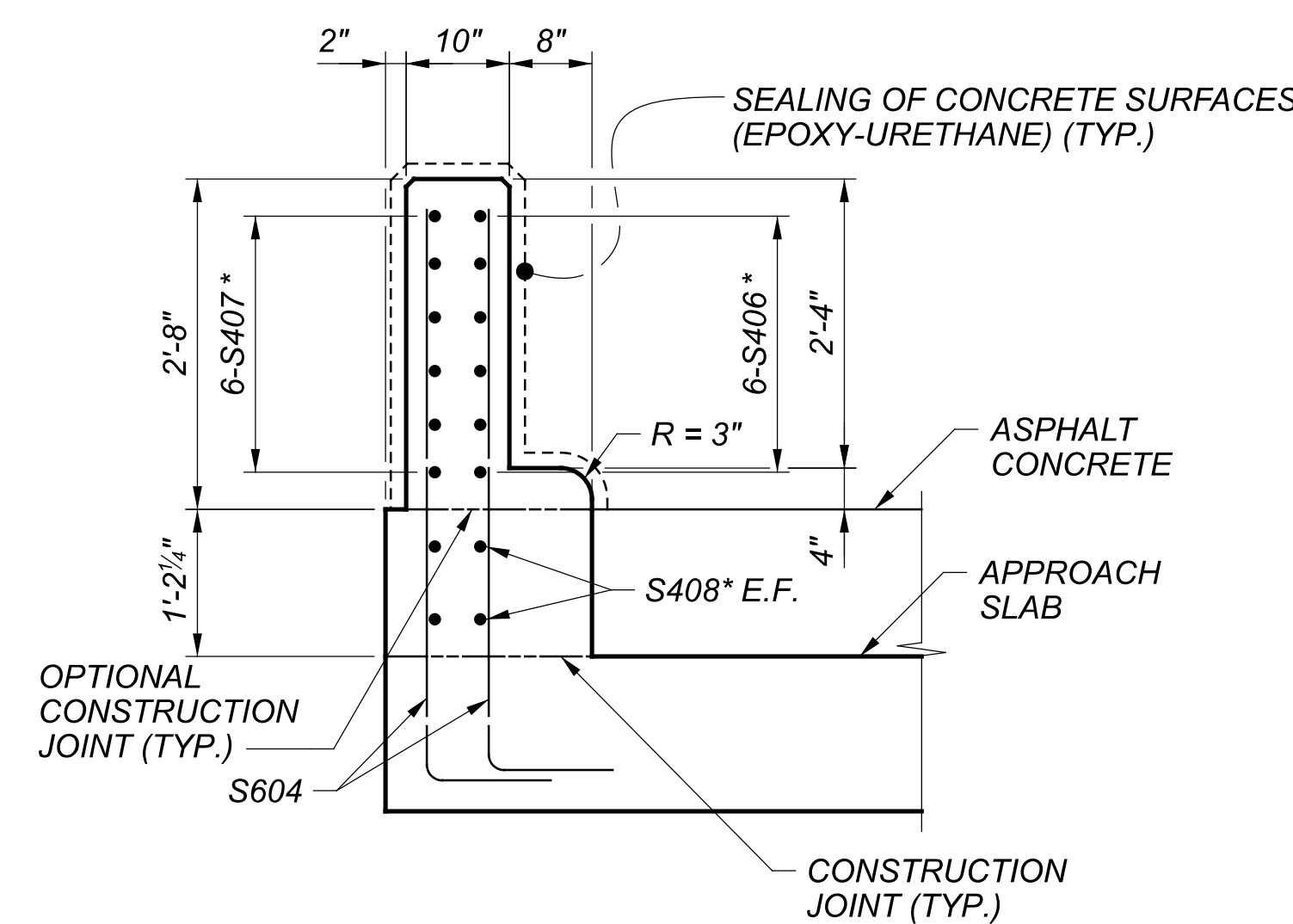
NOTES

- SEE STD. DWG. SBR-1-20 FOR ADDITIONAL DETAILS.
- PAYMENT FOR CONCRETE PARAPET AND REINFORCING STEEL ON THE APPROACH SLABS SHALL BE INCLUDED FOR PAYMENT UNDER ITEM 511 - CLASS QC2 CONCRETE WITH QC/QA, SUPERSTRUCTURE, ITEM 509 - GALVANIZED STEEL REINFORCEMENT AND ITEM 509 - NO. 4 DEFORMED GFRP REINFORCEMENT, RESPECTIVELY.

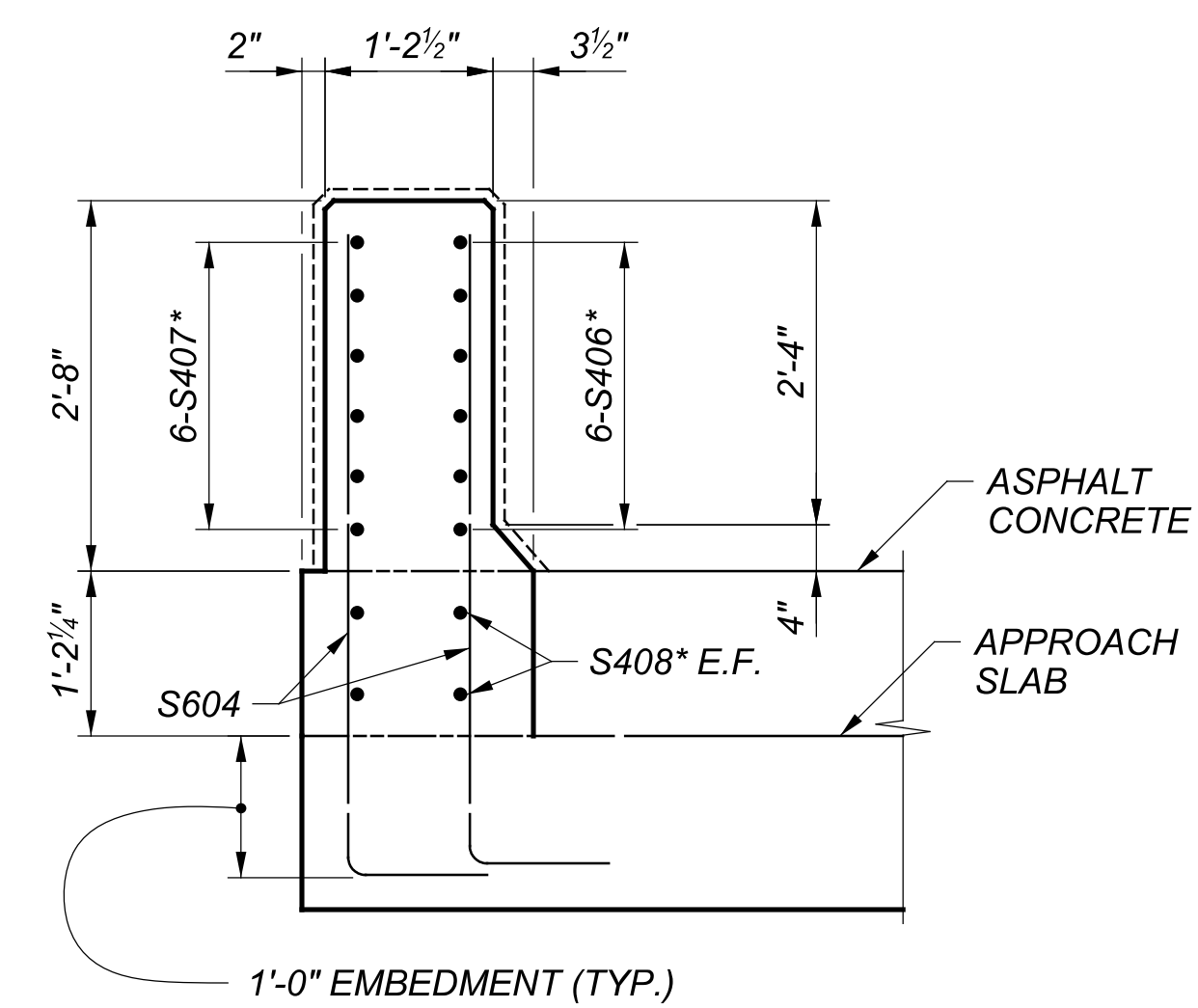
LEGEND

E.F. - EACH FACE
 N.F. - NEAR FACE
 F.F. - FAR FACE
 * - DENOTES BAR TO BE GLASS FIBER REINFORCED POLYMER (GFRP)

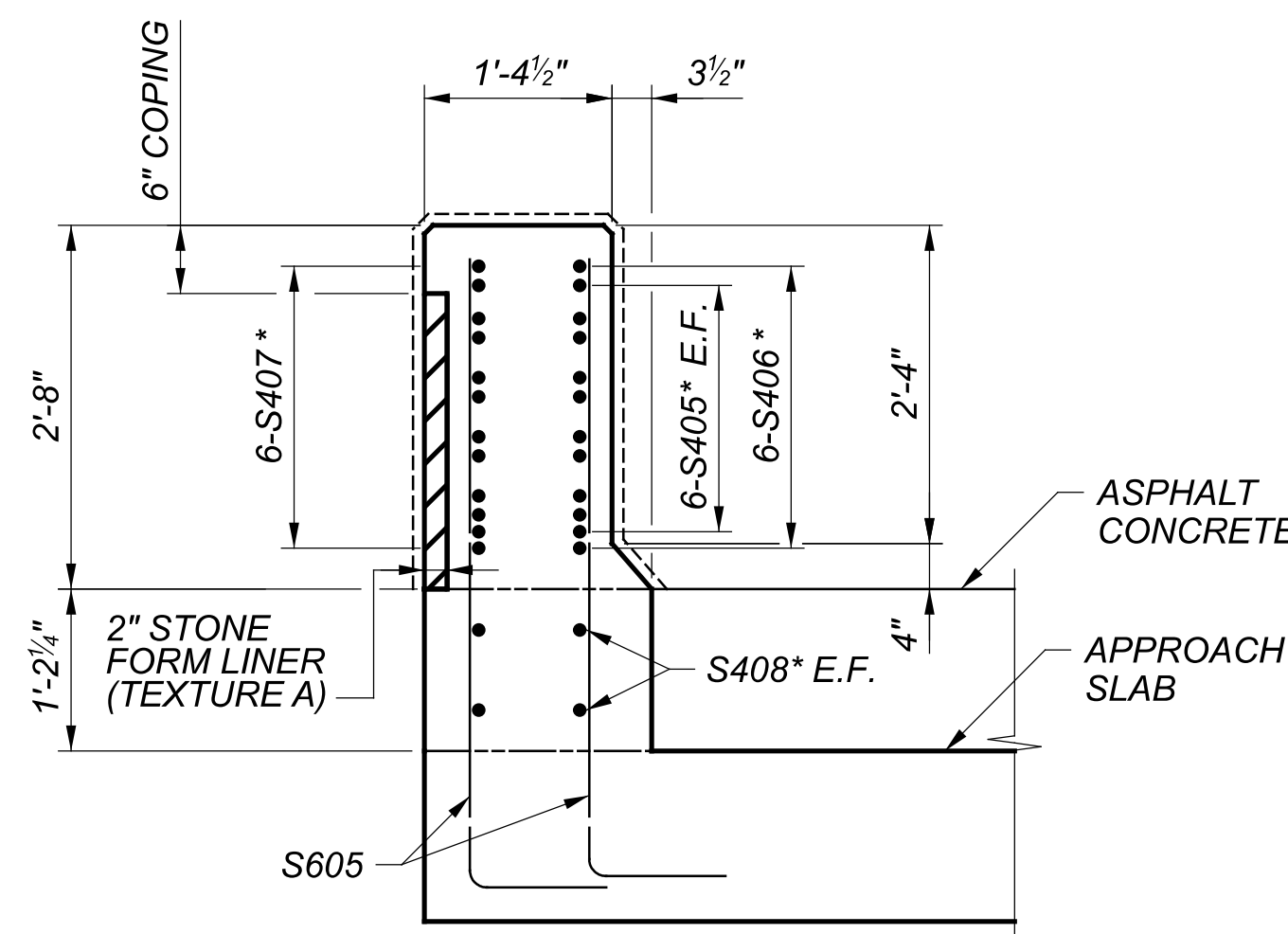
REVISIONS	NUMBER	DATE	DESCRIPTION
	1	11-30-22	MODIFIED PARAPET



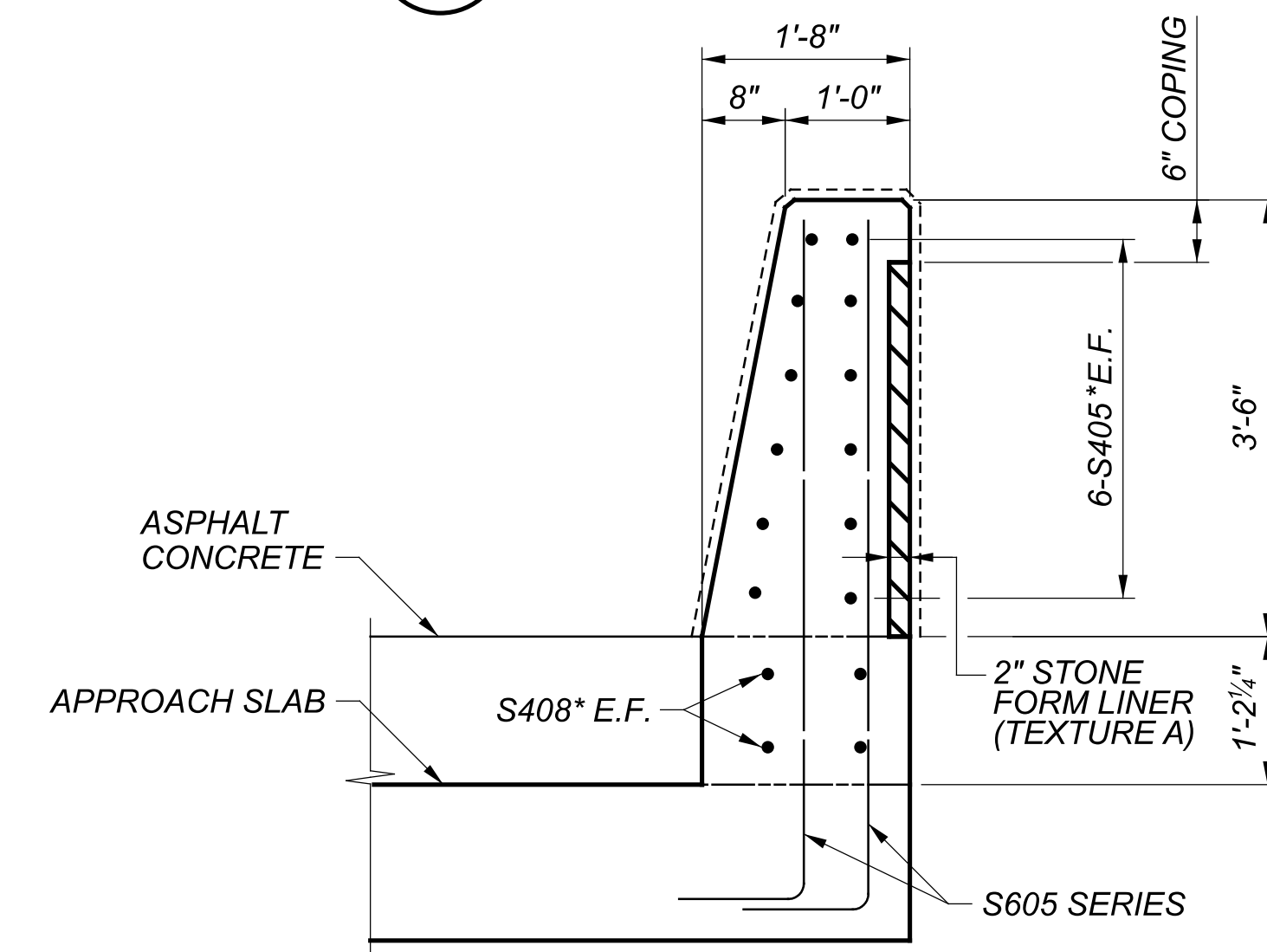
V SECTION
 35



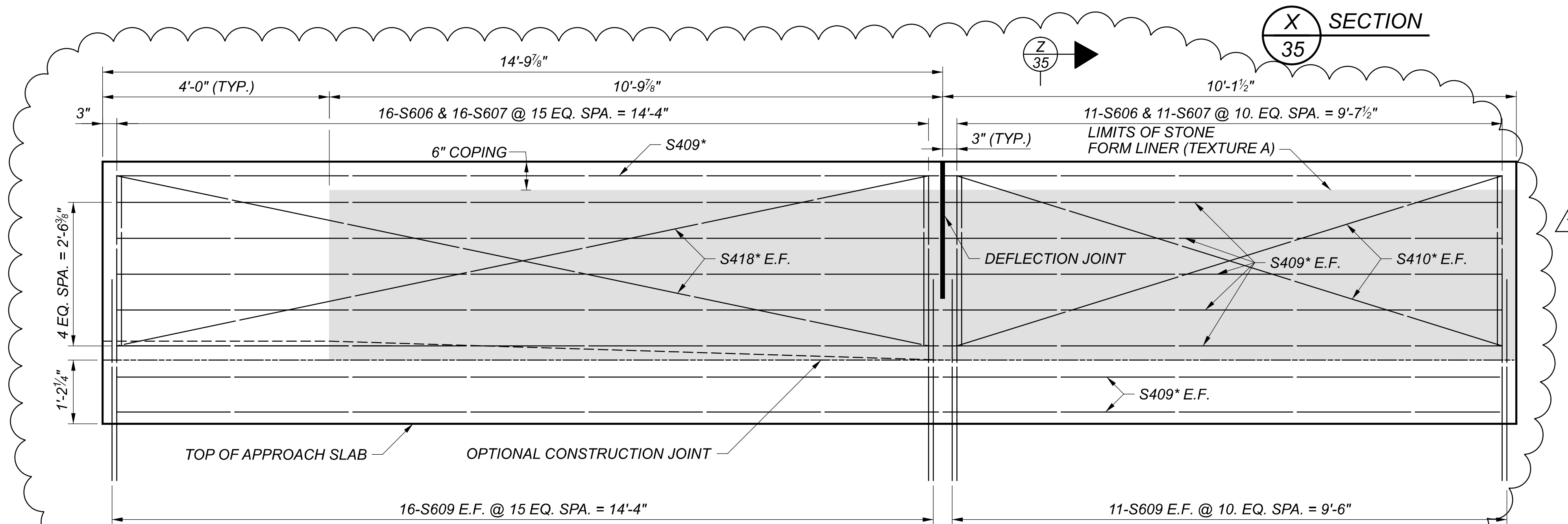
W SECTION
 35



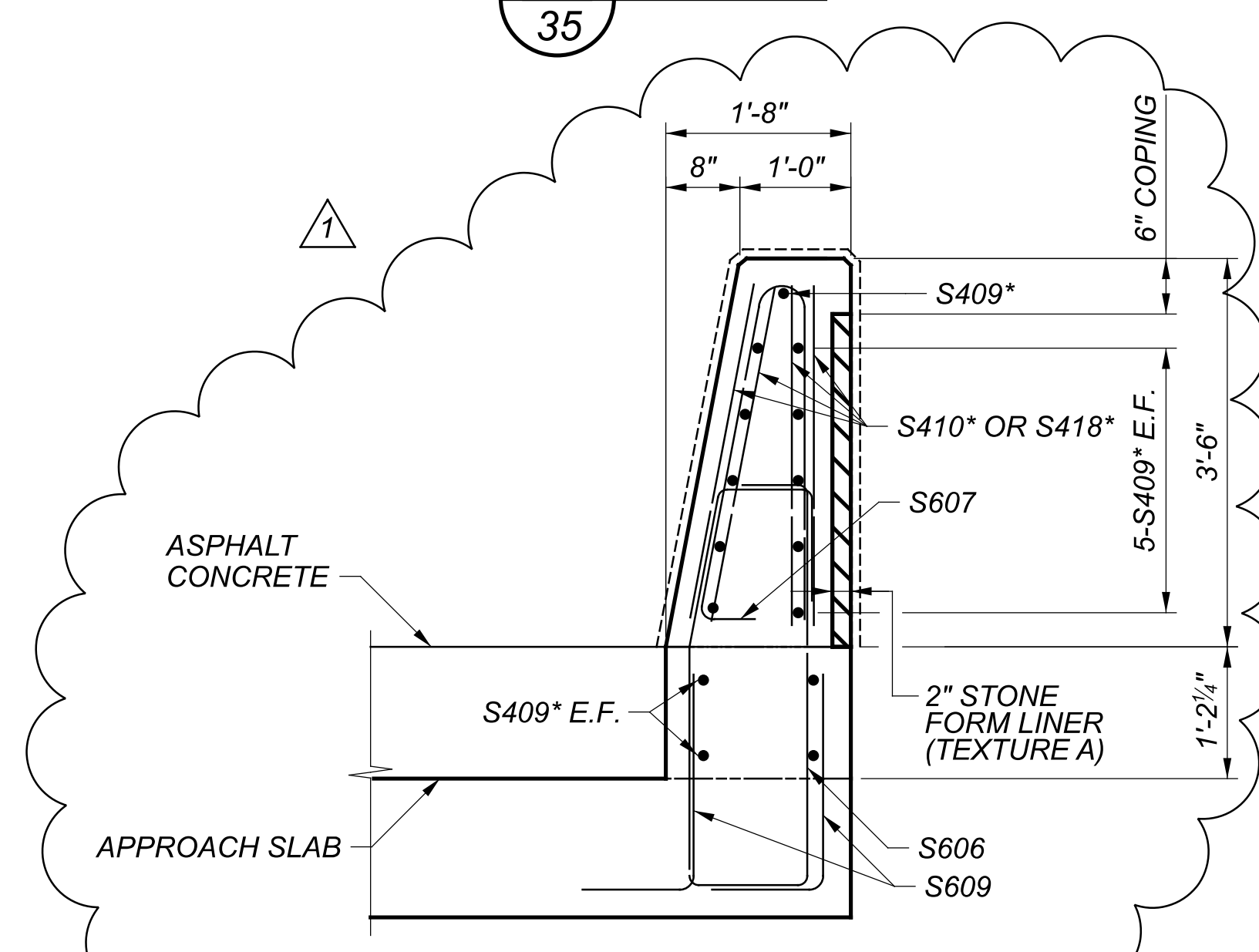
X SECTION
 35



Y SECTION
 35



REAR RIGHT PARAPET
 VIEWED ALONG OUTSIDE FACE



Z SECTION
 35

MARK	MAT'RL TYPE	TOTAL	LENGTH	TOTAL LENGTH	TYPE	DIMENSIONS				
						A	B	C	D	E
SUPERSTRUCTURE (GFRP)										
S401	GFRP	736	6'-11"	5090'-8"	16	6'-5"				
S402	GFRP	18	3'-9"	67'-6"	1	3'-3"	0'-7"			
S403	GFRP	572	40'-0"	22880'-0"	STR					
S404	GFRP	121	21'-4"	2581'-4"	STR					
S405	GFRP	156	10'-0"	1560'-0"	STR					
S406	GFRP	18	6'-4"	114'-0"	25	2'-6"	2'-5"	1'-3"	1 1/2"	0'-5"
S407	GFRP	18	5'-1"	91'-6"	STR					
S408	GFRP	12	13'-6"	162'-0"	STR					
S409	GFRP	15	24'-5"	366'-3"	STR					
S410	GFRP	4	10'-1"	40'-4"	STR					
S411	GFRP	44	14'-6"	638'-0"	STR					
S412	GFRP	16	10'-4"	165'-4"	STR					
S413	GFRP	44	3'-3"	143'-0"	1	2'-9"	0'-7"			
S414	GFRP	156	2'-9"	429'-0"	1	2'-3"	0'-7"			
S415	GFRP	416	2'-2"	901'-4"	1	1'-8"	0'-7"			
S416	GFRP	74	1'-8"	123'-4"	1	1'-2"	0'-7"			
S417	GFRP	2	3'-0"	6'-0"	STR					
S418	GFRP	4	14'-7"	58'-4"	STR					
SUB-TOTAL			35417'-11"							
SUPERSTRUCTURE (GALVANIZED-COATED)										
S501	GFRP	368	36'-7"	13462'-8"	STR					
S502	GFRP	368	35'-2"	12941'-4"	STR					
S503	GFRP	88	24'-4"	2141'-4"	STR					
S504	GFRP	228	32'-4"	7372'-0"	STR					
S509	GFRP	352	40'-0"	14080'-0"	STR					
S510	GFRP	8	14'-8"	117'-4"	STR					
S511	GFRP	264	2'-2"	572'-0"	1	0'-9"	1'-7"			
S512	GFRP	132	1'-11"	253'-0"	2	0'-9"	0'-8"	0'-9"		
SUB-TOTAL			50939'-8"							
APPROACH SLABS (EPOXY-COATED)										
S601	GFRP	736	7'-1"	5213'-4"	16	6'-5"				
S602	GFRP	368	33'-1"	123174'-8"	STR					
S603	GFRP	368	32'-7"	11990'-8"	STR					
SUB-TOTAL			29378'-8"							

MARK	MAT'RL TYPE	TOTAL	LENGTH	WEIGHT	TYPE	DIMENSIONS					
						A	B	C	D	R	INC
SUPERSTRUCTURE (GALVANIZED-COATED)											
S505	GSR	8	2'-9"	23	2	0'-7"	1'-10"	0'-7"			
S506	GSR	8	8'-5"	71	9	6 1/2"	3'-2"	2'-4"	3'-2"		
S507	GSR	12	7'-5"	93	21	1'-4"	1'-10"	0'-6"	1'-10"		
S508	GSR	8	3'-2"	27	STR						
S604	GSR	24	5'-6"	199	1	4'-8"	1'-0"				
S605	GSR	6 SERIES OF 11	5'-6" TO 6'-4"	587	1	4'-8" TO 5'-6"	1'-0"				1"
S606	GSR	27	9'-8"	393	42	2'-2 1/4"					
S607	GSR	401	7'-0"	4217	23	0'-6"	3'-3"	3'-3"	0'-2"		
S608	GSR	374	7'-2"	4026	37	0'-9"					
S609	GSR	54	2'-9"	224	1	1'-11"	1'-0"				
SUB-TOTAL				9860							

MARK	MAT'RL TYPE	NUMBER			LENGTH	WEIGHT	TYPE	DIMENSIONS
		R.A.	F.A.	TOTAL				A
APPROACH SLABS (EPOXY-COATED)								
AS501	ECSR	47	46	93	24'-6"	2378	STR	
AS502%	ECSR	25		25	33'-6"	874	STR	
AS503%	ECSR	32		32	34'-8"	1158	STR	
AS504%	ECSR	55		55	35'-2"	2018	STR	
AS505%	ECSR	2		2	33'-8"	71	STR	
AS506	ECSR	1	2	3	13'-7"	44	STR	
AS507%	ECSR		25	25	32'-3"	841	STR	
AS508%	ECSR		33	33	33'-5"	1151	STR	
AS509%	ECSR		25	25	32'-11"	859	STR	
AS510%	ECSR		33	33	34'-1"	1174	STR	
AS1001	ECSR	116	113	229	25'-11"	25539	18	24'-6"
AS1002	ECSR	2	4	6	13'-7"	351	STR	
SUB-TOTAL						36458		

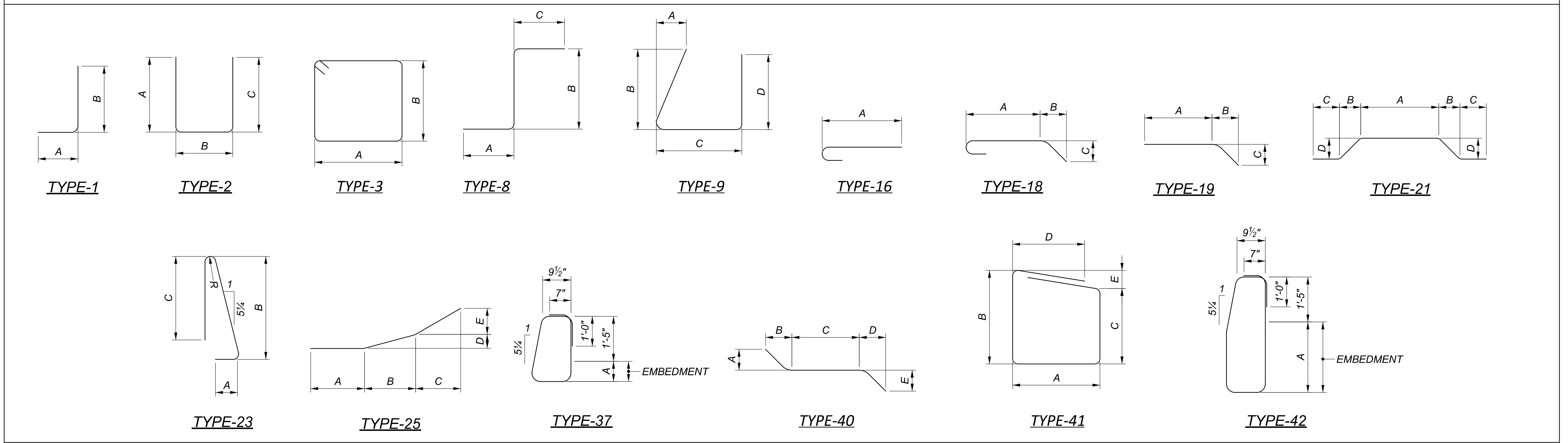
LEGEND
 % - BAR TO UTILIZE A MECHANICAL CONNECTOR. BAR LENGTH IS MEASURED TO THE CONSTRUCTION JOINT EXTRA BAR LENGTH AND/OR BAR END PREPARATION MAY BE NECESSARY DEPENDING UPON THE TYPE OF MECHANICAL CONNECTOR FURNISHED.

MECHANICAL CONNECTORS		
LOCATION	BAR SIZE	TOTAL
APPROACH SLABS	5	115

REVISIONS	NUMBER	DATE	DESCRIPTION
	1	11-30-22	REVISED CONCRETE REINFORCEMENT

- NOTES**
- THE BAR NUMBER IS SPECIFIED ON THE PLANS IN THE BAR MARK COLUMN. THE FIRST DIGIT WHERE THREE DIGITS ARE USED, AND THE FIRST TWO DIGITS WHERE FOUR ARE USED, INDICATES THE BAR SIZE NUMBER. FOR EXAMPLE, S501 IS A NO. 5 BAR. BAR DIMENSIONS ARE OUT TO OUT UNLESS OTHERWISE INDICATED.
 - ALL STRAIGHT BAR REINFORCING IN THE PARAPET SHALL BE GLASS FIBER REINFORCED POLYMER (GFRP).
 - ALL REINFORCING IN THE BRIDGE DECK SHALL BE GLASS FIBER REINFORCED POLYMER (GFRP).
 - ALL OTHER SUPERSTRUCTURE REINFORCING SHALL BE GALVANIZED COATED STEEL BARS.
 - ALL REINFORCING BARS IN THE APPROACH SLAB SHALL BE EPOXY COATED STEEL BARS.
 - PAYMENT FOR APPROACH SLAB STEEL REINFORCEMENT SHALL BE INCLUDED WITH ITEM 509 - EPOXY COATED STEEL REINFORCEMENT.

BENDING DIAGRAM



CONCRETE REINFORCEMENT
BRIDGE NO. MOT-00004-17.790L
S.R. 4 OVER WEBSTER STREET

SFN	5760518
DESIGN AGENCY	CARPENTER MARTY
DESIGNER/CHECKER	MTJ BWR
REVIEWER	WHM 8-10-22
PROJECT ID	101849
SUBSET	39
SHEET	113
TOTAL	39
TOTAL	170