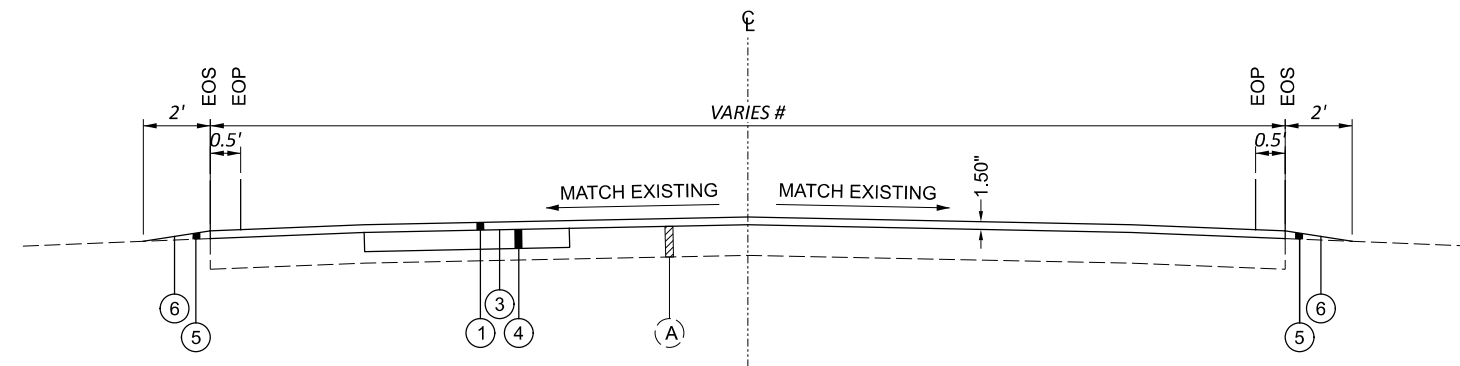
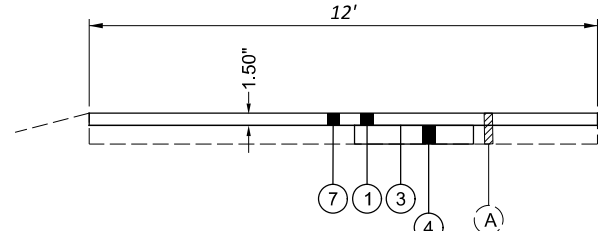


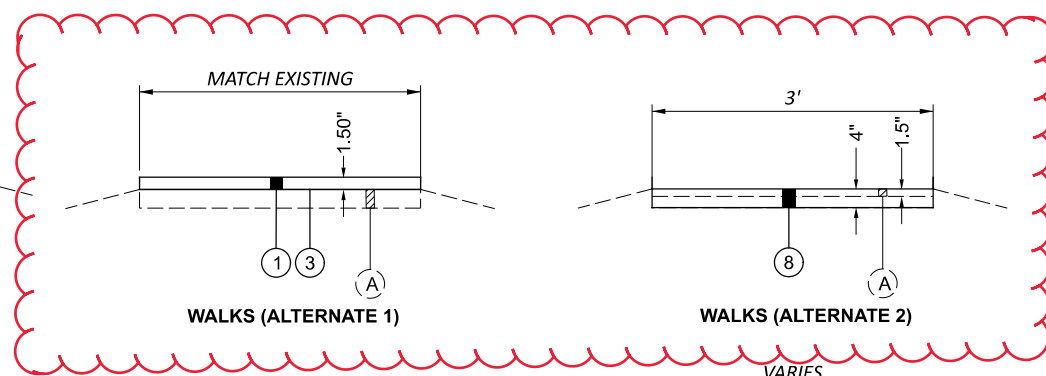
TYPICAL SECTION
 R-3, R-4, R-5, R-6, R-7, R-8, R-9, R-19, R-35, R-36, R-37, R-38, R-39



TYPICAL SECTION
 R-1, R-2, R-10, R-17

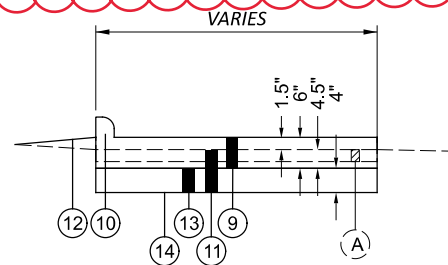


SERVICE LOOP

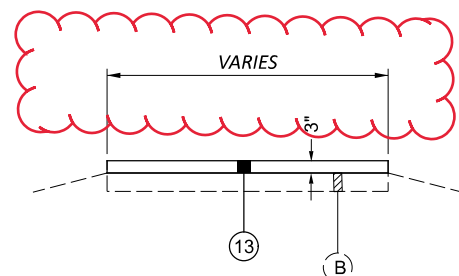


WALKS (ALTERNATE 1)

WALKS (ALTERNATE 2)



CONCRETE PADS



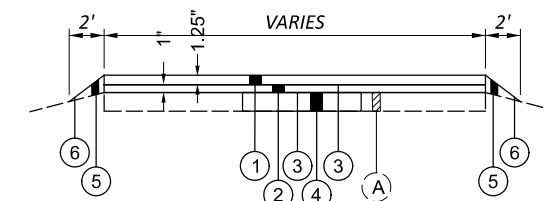
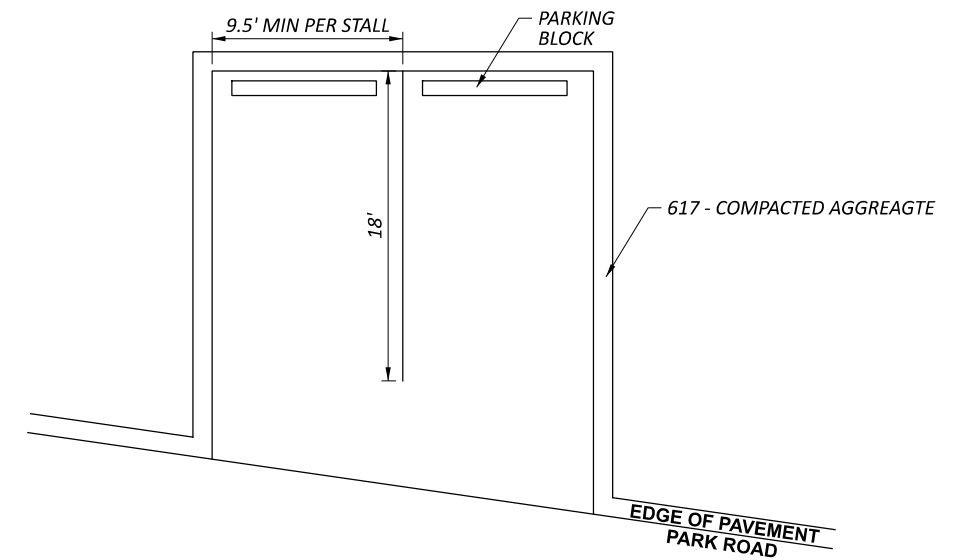
R-19 EXTRA AREA

PROPOSED LEGEND

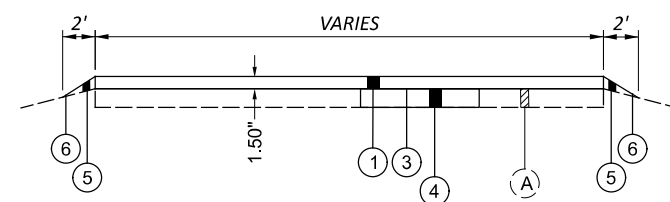
- ① ITEM 441 - ASPHALT CONCRETE SURFACE COURSE, TYPE 1, (449), 64-22
- ② ITEM 441 - ASPHALT CONCRETE INTERMEDIATE COURSE, TYPE 1, (449)
- ③ ITEM 407 - NON-TRACKING TACK COAT
- ④ ITEM 253 - PAVEMENT REPAIR
- ⑤ ITEM 617 - COMPACTED AGGREGATE
- ⑥ ITEM 408 - PRIME COAT
- ⑦ ~~ITEM 254 - PAVEMENT PLANING, ASPHALT CONCRETE~~
- ⑧ ITEM 608 - 4" CONCRETE WALK
- ⑨ ~~ITEM 451 - 6" REINFORCED CONCRETE PAVEMENT, CLASS QC 1P~~
- ⑩ ITEM 609 - CURB, TYPE 2-A
- ⑪ ITEM 203 - EXCAVATION
- ⑫ ITEM SPECIAL - SHAPING (209 ITEM)
- ⑬ ITEM 304 - AGGREGATE BASE
- ⑭ ITEM 204 - SUBGRADE COMPACTION
- ⑮ ITEM 441 - ASPHALT CONCRETE INTERMEDIATE COURSE, TYPE 2, (449)

EXISTING LEGEND

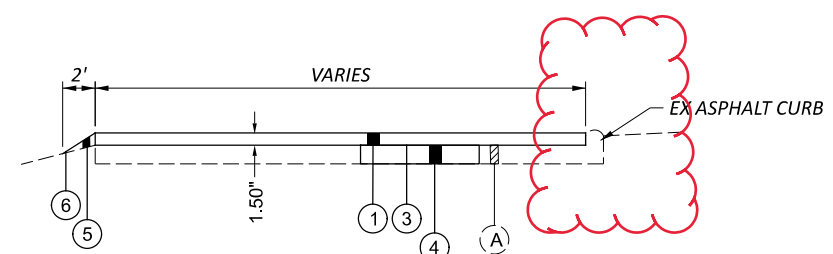
- (A) ASPHALT
- (B) AGGREGATE



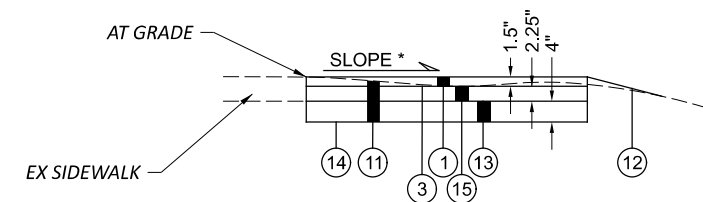
TYPICAL SECTION
 CABIN PARKING



PARKING LOTS 1, 2, & 3



PARKING LOT 4 & 5



PROPOSED PARKING LOT

NOTES:
 # SEE PAVEMENT SUBSUMMARY FOR PAVEMENT WIDTHS.
 * SEE SHEET 12 PROPOSED PARKING LOT PLAN VIEW

NOTIFICATION OF TRAFFIC RESTRICTIONS

THROUGHOUT THE DURATION OF THE PROJECT, THE CONTRACTOR SHALL NOTIFY THE PROJECT ENGINEER IN WRITING OF ALL TRAFFIC RESTRICTIONS AND UPCOMING MAINTENANCE OF TRAFFIC CHANGES. THE CONTRACTOR SHALL ENSURE THE WRITTEN NOTIFICATION IS SUBMITTED IN A TIMELY MANNER TO ALLOW THE PROJECT ENGINEER TO MEET THE REQUIRED TIME FRAMES SET FORTH IN THE TABLE BELOW TO INFORM THE SPECIAL HAULING PERMITS SECTION (HAULING.PERMITS@DOT.OHIO.GOV) AND THE DISTRICT PUBLIC INFORMATION OFFICE (PIO). THIS NOTIFICATION SHALL BE RECEIVED BY THE PROJECT ENGINEER PRIOR TO THE PHYSICAL SETUP OF ANY APPLICABLE SIGNS OR MESSAGE BOARDS.

INFORMATION SHOULD INCLUDE, BUT IS NOT LIMITED TO, ALL CONSTRUCTION ACTIVITIES THAT IMPACT OR INTERFERE WITH TRAFFIC AND SHALL LIST THE SPECIFIC LOCATION, TYPE OF WORK, ROAD STATUS, DATE AND TIME OF RESTRICTION, DURATION OF RESTRICTION, NUMBER OF LANES MAINTAINED, NUMBER OF LANES CLOSED, MINIMUM VERTICAL CLEARANCE, MINIMUM WIDTH OF DRIVABLE PAVEMENT, DETOUR ROUTES, IF APPLICABLE, AND ANY OTHER INFORMATION REQUESTED BY THE PROJECT ENGINEER.

NOTIFICATION TIME TABLE		
ITEM	DURATION OF CLOSURE	NOTICE DUE TO OFFICE OF COMMUNICATIONS
RAMP & ROAD CLOSURES	>= 2 WEEKS	21 CALENDER DAYS PRIOR TO CLOSURE
	> 12 HOURS & < 2 WEEKS	14 CALENDER DAYS PRIOR TO CLOSURE
	< 12 HOURS	4 BUSINESS DAYS PRIOR TO CLOSURE
LANE CLOSURES & RESTRICTIONS	>= 2 WEEKS	14 CALENDER DAYS PRIOR TO CLOSURE
	< 2 WEEKS	5 BUSINESS DAYS PRIOR TO CLOSURE
START OF CONSTRUCTION & TRAFFIC PATTERN CHANGES	N/A	14 CALENDER DAYS PRIOR TO IMPLEMENTATION

ANY UNFORESEEN CONDITIONS NOT SPECIFIED IN THE PLANS REQUIRING TRAFFIC RESTRICTIONS SHALL ALSO BE REPORTED TO THE PROJECT ENGINEER USING THE NOTIFICATION TIME TABLE.

THE PROJECT ENGINEER WILL FORWARD THIS INFORMATION TO THE FOLLOWING:

DISTRICT PUBLIC INFORMATION OFFICER (PIO):
 ASHLEY RITTENHOUSE
 FAX: (740) 373-3953
 EMAIL: ASHLEY.RITTENHOUSE@DOT.OHIO.GOV

DISTRICT PERMIT SECTION:
 STEPHEN WELLS
 FAX: (740) 568-3973
 EMAIL: STEPHEN.WELLS@DOT.OHIO.GOV

CENTRAL OFFICE SPECIAL HAUL PERMITS SECTION:
 FAX: (614) 728-4099
 EMAIL: HAULING.PERMITS@DOT.OHIO.GOV

ERIC EVANOO, DIVISION OF ENGINEERING
 614-204-7843
 ERIC.EVANOO@DNR.OHIO.GOV

JERRY POLLOCK, PARK MANAGER, DIVISION OF PARKS & WATERCRAFT
 740-891-1753
 JERRY.POLLOCK@DNR.OHIO.GOV

JOEL YOTT, DIVISION OF PARKS & WATERCRAFT
 740-385-6842
 JOEL.YOTT@DNR.OHIO.GOV

THE PIO WILL, IN TURN, NOTIFY THE PUBLIC, THE LOCAL EMERGENCY SERVICES, AFFECTED SCHOOLS AND BUSINESSES, AND ANY OTHER IMPACTED LOCAL PUBLIC AGENCY OF THE ABOVE MENTIONED ITEMS VIA MEDIA SOURCES.

ODNR PROJECT COORDINATION
 CONTRACTOR SHALL CONTACT ODNR PARK PERSONEL 1 WEEK PRIOR TO THE COMMENCEMENT OF WORK TO COORDINATE WORK LOCATIONS, TIMES AND CLOSURES.

ITEM 614, MAINTAINING TRAFFIC
 TWO-WAY TRAFFIC SHALL BE MAINTAINED AT ALL TIMES EXCEPT THAT ONE-WAY TRAFFIC WILL BE PERMITTED FOR MINIMUM PERIODS OF TIME CONSISTENT WITH THE REQUIREMENTS OF THE SPECIFICATIONS FOR PROTECTION OF COMPLETED ASPHALT CONCRETE COURSES.

ALL WORK AND TRAFFIC CONTROL DEVICES SHALL BE IN ACCORDANCE WITH CMS 614 AND OTHER APPLICABLE PORTIONS OF THE SPECIFICATIONS, AS WELL AS THE OHIO MANUAL OF UNIFORM TRAFFIC CONTROL DEVICES. PAYMENT FOR ALL LABOR, EQUIPMENT AND MATERIALS SHALL BE INCLUDED IN THE LUMP SUM CONTRACT PRICE FOR ITEM 614, MAINTAINING TRAFFIC, UNLESS SEPARATELY ITEMIZED IN THE PLAN.

ITEM 253, PAVEMENT REPAIR
 PERFORM PARTIAL DEPTH PAVEMENT REPAIRS WHERE FAILING ASPHALT CONCRETE IS FOUND (AFTER MILLING), IT SHALL BE REPAIRED WITH A DEPTH OF 3" AND A MINIMUM WIDTH OF 4' UNLESS OTHERWISE DIRECTED BY THE ENGINEER. THE REPLACEMENT MATERIAL SHALL CONFORM TO ITEM 441, ASPHALT CONCRETE INTERMEDIATE COURSE, TYPE 2.

LOCATION	COUNT	CUBIC YARD
SPLIT 1	20	5

THE PAVEMENT REPAIR COUNT PROVIDED IN THIS PLAN IS AN ESTIMATE, THE ENGINEER WILL PROVIDE THE ACTUAL COUNT AND DESIGNATE THE LOCATION AND LIMITS OF THE AREAS TO BE REPAIRED.

TOTALS HAVE BEEN CARRIED TO THE GENERAL SUMMARY.

UTILITIES
 THERE ARE NO UNDERGROUND UTILITIES SHOWN ON THIS PLAN. THE NATURE OF THE WORK REQUIRED BY THIS PROJECT WILL NOT AFFECT ANY KNOWN UNDERGROUND UTILITIES THAT EXIST UNDER, OR ADJACENT TO, THE WORK AREA.

PROFILE AND ALIGNMENT
 PLACE THE PROPOSED PAVEMENT TO FOLLOW THE ALIGNMENT AND PROFILE OF THE EXISTING PAVEMENT. PLACE THE PROPOSED ASPHALT CONCRETE OVERLAY WITH A UNIFORM THICKNESS AS SHOWN ON THE TYPICAL SECTIONS.

ITEM 623, CONSTRUCTION LAYOUT STAKES AND SURVEYING, AS PER PLAN
 WHEN STATIONING A RESURFACING PROJECT FOR QUANTITY CONTROL, THE REFERENCE IN 623.02 TO A REGISTERED PROFESSIONAL ENGINEER OR REGISTERED PROFESSIONAL SURVEYOR SHALL BE WAIVED. THE STAKES MAY BE PLACED BY THE CONTRACTOR'S PERSONNEL USING A MEASURING WHEEL.

ITEM SPECIAL, PARKING BLOCK REMOVED AND RESET
 REMOVE PARKING BLOCKS FROM PARKING AREA AND STORE ON SITE TILL PAVEMENT AND MARKING IS COMPLETE. RESET PARKING BLOCKS AT THE PROPOSED LOCATIONS EVENLY SPACED BETWEEN THE PROPOSED PARKING STALL MARKINGS.

ITEM SPECIAL, PARKING BLOCK
 PLACE PARKING BLOCKS PER SCD RM-6.1 AND AS SHOWN IN THIS PLAN

ITEM 209, SHAPING
 USE C&MS 209 SHAPING TO CREATE A CONSISTENT SLOPE AS SHOWN IN THE PLAN.

USE 659 ITEMS; TOP SOIL, WATER, LIME, FERTILIZER, AND SEED AND MULCH ACCORDING TO C&MS 659 AS NEEDED TO ACHIEVE 70% GRASS COVER.

ALL WORK AND MATERIALS REQUIRED TO GRADE THE AREA AND ACHIEVE 70% GRASS COVER SHALL BE INCLUDED IN ITEM 209 - SHAPING

SIDEWALKS

SIDEWALK		
CABIN ID	LENGTH (FT)	AREA (SF)
1	45	180
2	40	160
3	52.5	210
4	69.5	278
5	45.5	182
6	47	188
7	42	168
8	17	68
9	27	108
10	52.5	210
11	45	180
12	63	252
13	42	168
14	35	140
15	22	88
16	29	116
17	42	168
18	14	56
19	44	176
20	52	208
21	91	364
22	68	272
23	20	80
24	18.5	74
25	25	100
26	44	176
27	34.5	138
28	58.5	234
29	38	152
30	49.5	198
WALK 1	75	300
TOTAL		5392

ALTERNATE 1
 ITEM 441 - ASPHALT CONCRETE SURFACE COURSE, TYPE 1, (449), PG64-22 AS PER PLAN
 (5392 SF X 1.5" / 12) / 27 = 25CY
 ITEM 407 - NON-TRACKING TACK COAT (.08 GAL / SY)
 5392 SF / 9 X .08 GAL / SY = 48 GAL

ITEM 441 - ASPHALT CONCRETE INTERMEDIATE COURSE, TYPE 1, (449) TAPER INTERMEDIATE COURSE FOR A MINIMUM OF 2' ALONG THE LENGTH OF SIDEWALK.
 (2' X 4' X 1.0" / 12 X 30 SIDEWALKS) / 2 / 27 = 1 CY
 ITEM 407 - NON-TRACKING TACK COAT (.05 GAL / SY)
 (2' X 4' X 30 SIDEWALKS) / 9 X .05 GAL / SY = 2 GAL

ALTERNATE 2
 ITEM 608 - 4" CONCRETE WALK
 1348' X 3' = 4044 SF

QUANTITIES CARRIED TO THE GENERAL SUMMARY

DESIGN AGENCY



DESIGNER

KWK

REVIEWER

MRF 3/2/22

PROJECT ID

111331

SHEET

3


TOTAL

12

SHEET NUM.						PART.		ITEM	ITEM	GRAND	UNIT	DESCRIPTION	SEE	
3	5	6	12			01/NFP/PV		EXT	TOTAL				SHEET NO.	
	195							195				ROADWAY		
	20		68					88			EACH	PARKING BLOCK REMOVED AND RESET	3	
	160		312					472			CY	EXCAVATION		
	18		94					112			SY	SUBGRADE COMPACTION		
			5					5			SY	SHAPING	3	
								SPECIAL	20961000	112	SY	CONCRETE PARKING BLOCK	3	
								SPECIAL	69050500	5	EACH			
	4,044							4,044			SF	ROADWAY ALTERNATES		
								608	10000	4,044	SF	4" CONCRETE WALK (ALTERNATE 2)	3	
								3			EACH	DRAINAGE		
								611	99654	3	EACH	MANHOLE ADJUSTED TO GRADE		
												PAVEMENT		
5								253	02000	5	CY	PAVEMENT REPAIR		
	1,683							1,683	01000	1,683	SY	PAVEMENT PLANING, ASPHALT CONCRETE, 1.50"		
	56		35					91	20000	91	CY	AGGREGATE BASE		
	3,944		22					3,966	20000	3,966	GAL	NON-TRACKING TACK COAT		
	2,203							2,203	10000	2,203	GAL	PRIME COAT		
			20					20	70300	20	CY	ASPHALT CONCRETE INTERMEDIATE COURSE, TYPE 2, (449)		
	1,320		13					1,333	70000	1,333	CY	ASPHALT CONCRETE SURFACE COURSE, TYPE 1, (449), PG64-22		
	615							615	70200	615	CY	ASPHALT CONCRETE INTERMEDIATE COURSE, TYPE 1, (449)		
	84							84	10010	84	SY	6" REINFORCED CONCRETE PAVEMENT, CLASS QC 1P		
	100							100	14000	100	FT	CURB, TYPE 2-A		
	180							180	10100	180	CY	COMPACTED AGGREGATE		
												PAVEMENT ALTERNATES		
50								50	407	20000	50	GAL	NON-TRACKING TACK COAT (ALTERNATE 1)	3
25								25	441	70101	25	CY	ASPHALT CONCRETE SURFACE COURSE, TYPE 1, (449), AS PER PLAN, PG64-22 (ALTERNATE 1)	3
1								1	441	70200	1	CY	ASPHALT CONCRETE INTERMEDIATE COURSE, TYPE 1, (449) (ALTERNATE 1)	3
												TRAFFIC CONTROL		
			28					28	630	03100	28	FT	GROUND MOUNTED SUPPORT, NO. 3 POST	
			4					4	630	80100	4	SF	SIGN, FLAT SHEET	
		3.42						3.42	644	00104	3.42	MILE	EDGE LINE, 6"	
		1.15						1.15	644	00300	1.15	MILE	CENTER LINE	
		172						172	644	00500	172	FT	STOP LINE	
		55						55	644	00700	55	FT	TRANSVERSE/DIAGONAL LINE	
		5,887	195					6,082	644	01200	6,082	FT	PARKING LOT STALL MARKING	
		4						4	644	01300	4	EACH	LANE ARROW	
		145						145	644	01510	145	FT	DOTTED LINE, 6"	
		11	2					13	644	01600	13	EACH	HANDICAP SYMBOL MARKING	
		0.06						0.06	646	10010	0.06	MILE	EDGE LINE, 6"	
		1						1	646	10900	1	EACH	HANDICAP SYMBOL MARKING	
		485						485	646	20200	485	FT	PARKING LOT STALL MARKING	
												INCIDENTALS		
LS								LS	614	11000	LS	MAINTAINING TRAFFIC		
LS								LS	623	10001	LS	CONSTRUCTION LAYOUT STAKES AND SURVEYING, AS PER PLAN	3	
LS								LS	624	10000	LS	MOBILIZATION		

GENERAL SUMMARY

DESIGN AGENCY



DESIGNER
KWK


REVIEWER
MRF 03/02/22

PROJECT ID
111331

SHEET TOTAL
4 12

STRAIGHT LINE MILES (SLM IS ROUNDED TO THE NEAREST 0.01 MILES)		DISTANCE (D)	AVERAGE WIDTH (W)	SURFACE AREA (A) A=D*W/9	CADD GENERATED AREA	441 ASPHALT CONCRETE INTERMEDIATE COURSE, TYPE 1, (449), 1.00"	441 ASPHALT CONCRETE SURFACE COURSE, TYPE 1, (449), PG64-22, 1.25"	441 ASPHALT CONCRETE SURFACE COURSE, TYPE 1, (449), PG64-22, 1.50"	407 NON-TRACKING TACK COAT	407 NON-TRACKING TACK COAT (INTERMEDIATE)	617 COMPACTED AGGREGATE	408 PRIME COAT	304 AGGREGATE BASE	204 SUBGRADE COMPACTION	254 PAVEMENT PLANING, ASPHALT CONCRETE, 1.50"	SPECIAL PARKING BLOCK REMOVED AND RESET	203 EXCAVATION	451 6" REINFORCED CONCRETE PAVEMENT, CLASS CC 1P	SPECIAL SHAPING	609 CURB, TYPE 2-A	NOTES			
BEGIN	END	FT	FT	SY	SY	CY	CY	CY	GAL	GAL	CY	GAL	CY	SY	SY	EACH	CY	SY	SY	FT				
R-1		100	27		310	2		13	25	7	1	13												
R-2		120	22		314	2		14	26	7	1	19												
R-3		155	22	379		11	14		31	19	3	28												
R-4		480	22	1173		33	41		94	59	7	86												
R-5		310	22	758		22	27		61	38	5	56												
R-6		1620	22	3960		110	138		317	198	23	288												
R-7		1070	22	2616		73	91		210	131	15	191												
R-8		135	22	330		10	12		27	17	2	24												
SERVICE LOOP		400	12	533				23	43								533							
MINI GOLF APRON					31			2	3															
R-17		945	10	1050		2	44		84	5	9	168												
R-37		1320	19	2787		78	97		223	140	19	235												
R-38		110	19	232		7	9		19	12	2	20												
R-39		365	19	771		22	27		62	39	6	65												
R-39 EXTRA AREA 1					617	18	22		50	31	5	26				8								
CABIN 1 PARKING					111	4	4		9	6	1	7												
CABIN 3 PARKING					96	3	4		8	5	1	4				4								
CABIN 4 PARKING					105	3	4		9	6	1	3				4								
CABIN 6 PARKING					46	2	2		4	3	1	3				2								
CABIN 12 PARKING					88	3	4		8	5	1	4				4								
R-9		960	19	2027		57	71		163	102	14	171												
R-10					958	2		40	77	48	5	64												
R-35					275	8	10		22	14	1	3												
R-36		1235	15	2058		58	72		165	103	17	217												
R-36 EXTRA AREA 1		130	11	159		2		7	13	5	2	24												
R-36 EXTRA AREA 1 APRON					13			1	2															
CABIN 30 PARKING					33	1	2		3	2	1	6												
CABIN 28 PARKING					101	3	4		9	6	1	9				4								
CABIN 27 PARKING					42	2	2		4	3	1	6				2								
CABIN 25 PARKING					91	3	4		8	5	1	9				4								
CABIN 24 PARKING					65	2	3		6	4	1	8												
CABIN 23 PARKING					56	2	2		5	3	1	8												
R-19		572	19	1208		34	42		97	61	8	102												
R-19 EXTRA AREA 1					718	20	25		58	36	3	38				8								
R-19 EXTRA AREA 2					436	2	2		4	3														
CABIN 13 PARKING					49	2	2		4	3	1	7				2								
CABIN 19 PARKING					49	2	2		4	3	1	7				2								
CABIN 14 PARKING					51	2	2		5	3	1	7				2								
CABIN 20 PARKING					49	2	2		4	3	1	8												
PARKING LOT 1					933			39	75		3	44												
PARKING LOT 2					1426	2		60	115	5	1	9			1150	9								
PARKING LOT 3					1808			76	145		3	44												
PARKING LOT 4					3603	2		151	289	5	6	100			100	11		34	18	70				
PARKING LOT 5					2549	2		107	204	5	4	72	13	50	40	9		50			30			
SUBSUMMARY TOTALS						615	743	577	2794	1150	180	2203	56	160	1683	195	20	84	18	100				
TOTALS CARRIED TO GENERAL SUMMARY						615	1320		3944		180	2203	56	160	1683	195	20	84	18	100				

PAVEMENT SUBSUMMARY


DESIGN AGENCY

 DESIGNER: KWK
 REVIEWER: MRF 03/2/22
 PROJECT ID: 111331
 SHEET: 5 TOTAL: 12

MRG-BURR OAK SP LODGE ROAD

MODEL: TRAFFIC CONTROL SUBSUMMARY PAPER SIZE: 17x11 (in.) DATE: 9/22/2022 TIME: 2:43:17 PM USER: KKLESKI
 p:\vhobol-pw-bentley.com\shhodo-pw-02\Documents\01 Active Projects\Distrid 10\Worgan\111331\400-Engineering\Roadway\Sheets\111331_GS001.dgn

STRAIGHT LINE MILES (SLM IS ROUNDED TO THE NEAREST 0.01 MILES)		DISTANCE (D) FT	644	644	644	644	644	644	644	644	644	646	646	646	NOTES		
			CENTER LINE	EDGE LINE, 6" (WHITE)	EDGE LINE, 6" (YELLOW)	DOTTED LINE, 6"	STOP LINE	PARKING LOT STALL MARKING	TRANSVERSE/DIAGONAL LINE	HANDICAP SYMBOL MARKING	LANE ARROW	PARKING LOT STALL MARKING	EDGE LINE, 6" (YELLOW)	HANDICAP SYMBOL MARKING			
BEGIN	END	FT	MILE	MILE	MILE	FT	FT	FT	FT	EACH	EACH	FT	MILE	EACH			
R-1		100	0.02	0.03		50	12										
R-2		120	0.01	0.04			20										
R-3		155	0.03	0.06													
R-4		480	0.09	0.18													
R-5		310	0.06	0.12													
R-6		1620	0.31	0.61													
R-7		1070	0.20	0.41													
R-8		135	0.03	0.05		95											
LODGE CUL DE SAC												265	0.06	1			
R-17							12										
R-37		1320	0.25	0.47													
R-38		110	0.02	0.04			10										
R-39		365	0.07	0.14													
R-39 EXTRA AREA 1				0.03				72		1							
CABIN 3 PARKING								54									
CABIN 4 PARKING								54									
CABIN 6 PARKING								18									
CABIN 11 PARKING								54									
R-9		960	0.01	0.36			12										
R-10				0.08	0.05						2						
R-35			0.01	0.04	0.02		12		55		2						
R-36		1235		0.23	0.21												
R-36 EXTRA AREA 1		390					10										
CABIN 28 PARKING								54									
CABIN 27 PARKING								18									
CABIN 25 PARKING								54									
R-19		572	0.01	0.22													
R-19 EXTRA AREA 1				0.03				90									
CABIN 13 PARKING								18									
CABIN 19 PARKING								18									
CABIN 14 PARKING								18									
PARKING LOT 1			0.01				30	330		1							
PARKING LOT 2			0.01				20	200		1							
PARKING LOT 3								1170		1							
PARKING LOT 4							24	2226		1							
PARKING LOT 5			0.01				10	1440		6		220					
SUBSUMMARY TOTAL			1.15	3.08	0.34	145	172	5887	55	11	4	485	0.06	1			
TOTALS CARRIED TO GENERAL SUMMARY			1.15	3.42		145	172	5887	55	11	4	485	0.06	1			

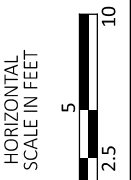
TRAFFIC CONTROL SUBSUMMARY

DESIGN AGENCY

 DESIGNER
KWK
 REVIEWER
MRF 3/2/22
 PROJECT ID
111331
 SHEET TOTAL
6 | 12

304	441	441	407	203	204	SPECIAL	644	644	SPECIAL	630	630
AGGREGATE BASE	ASPHALT CONCRETE INTERMEDIATE COURSE, TYPE 2, (449)	ASPHALT CONCRETE SURFACE COURSE, TYPE 1, (449), PG64-22	NON-TRACKING TACK COAT	EXCAVATION	SUBGRADE COMPACTION	SHAPING	HANDICAP SYMBOL MARKING	PARKING LOT STALL MARKING	CONCRETE PARKING BLOCK	GROUND MOUNTED SUPPORT, NO. 3 POST	SIGN, FLAT SHEET
CY	CY	CY	GAL	CY	SY	SY	EACH	FT	EACH	FT	SF
35	20	13	22	68	312	94	2	195	5	28	4

EXISTING ELEVATIONS ARE ESTIMATED AND ARE NOT ACTUAL ELEVATIONS. PROPOSED ELEVATIONS AND SLOPES ARE PROVIDED AS RELATIVE TO THE EXISTING ELEVATIONS. USE THE PROPOSED LAYOUT, ENSURE THAT THE PAVEMENT SLOPE DRAINS AWAY FROM THE LODGE AND INTO THE "GRADING AREA". THE GRADING AREA SHALL DRAIN AWAY FROM THE LODGE AND PARALLEL TO THE WALK.

EXISTING ELEV.
 PROPOSED ELEV.



PROPOSED PARKING LOT
 PLAN VIEW

DESIGN AGENCY



DESIGNER

KWK

REVIEWER

MRF 3/2/22

PROJECT ID

111331

SHEET TOTAL

12 12

