

I:\Project+Data\10060_MRW-71-12-19_Design_Roadway_Sheets\10060_GG00.dgn 11/30/2021 10:06:37 AM anolow1

SHEET NUMBER											PARTICIPATION				ITEM	ITEM EXT	GRAND TOTAL	UNIT	DESCRIPTION	SEE SHEET NO.
13-15	16-19	26	27	28	29	30	31	32	85	86	01/TMS/PV	02/STR/PV	03/TMS/CV	04/TMS/BR						
																		ROADWAY		
							38					38			202	34900	38	FT	PIPE REMOVED	
							312.5					312.5			202	38001	312.5	FT	GUARDRAIL REMOVED, AS PER PLAN	13
							5					5			202	42001	5	EACH	ANCHOR ASSEMBLY REMOVED, TYPE A, AS PER PLAN	13
							1					1			202	42051	1	EACH	ANCHOR ASSEMBLY REMOVED, TYPE B, AS PER PLAN	13
								15				15			203	10000	15	CY	EXCAVATION	
							5					5	3		203	20000	8	CY	EMBANKMENT	
								3				3			203	20001	148	CY	EMBANKMENT, AS PER PLAN	13
				28.88							28.88				209	60500	28.88	MILE	LINEAR GRADING	
							300					300			606	15050	300	FT	GUARDRAIL, TYPE MGS	
							1					1			606	25550	1	EACH	ANCHOR ASSEMBLY, MGS TYPE A	
							5					5			606	26151	5	EACH	ANCHOR ASSEMBLY, MGS TYPE E, AS PER PLAN (MASH 2016)	14
							4					4			606	35141	4	EACH	BRIDGE TERMINAL ASSEMBLY, TYPE 4, AS PER PLAN	14
25												25			606	98000	25	FT	GUARDRAIL, MISC.: ALTERNATE GUARDRAIL PLACEMENT	14
3												3			623	39500	3	EACH	MONUMENT BOX ADJUSTED TO GRADE	
																			EROSION CONTROL	
44								11				55			659	00300	55	CY	TOPSOIL	
443								72				515			659	10000	515	SY	SEEDING AND MULCHING	
22								4				26			659	14000	26	SY	REPAIR SEEDING AND MULCHING	
22								4				26			659	15000	26	SY	INTER-SEEDING	
0.06								0.01				0.07			659	20000	0.07	TON	COMMERCIAL FERTILIZER	
0.09								0.01				0.10			659	31000	0.10	ACRE	LIME	
2								1				3			659	35000	3	MGAL	WATER	
											500	500			832	30000	1000	EACH	EROSION CONTROL	
																			DRAINAGE	
							31					31			601	21061	31	SY	TIED CONCRETE BLOCK MAT WITH TYPE 2 UNDERLAYMENT, AS PER PLAN	14
							50					50			611	04900	50	FT	12" CONDUIT, TYPE D, 706.02	
							8					7	1		611	98630	8	EACH	CATCH BASIN ADJUSTED TO GRADE	
							123						123		899	10000	123	FT	15" DIAMETER CURED-IN-PLACE PIPE LINER	
							95						95		899	10000	95	FT	18" DIAMETER CURED-IN-PLACE PIPE LINER	
																			PAVEMENT	
400		1222	13								1636				251	01041	1636	SY	PARTIAL DEPTH PAVEMENT REPAIR (ASPHALT CONCRETE BASE), AS PER PLAN, 3.0"	14
420		637	203								1260				251	01041	1260	SY	PARTIAL DEPTH PAVEMENT REPAIR (ASPHALT CONCRETE BASE), AS PER PLAN, 8.0"	14
							92					92			253	02001	92	CY	PAVEMENT REPAIR, AS PER PLAN, TYPE 1	14
							28					28			253	02001	28	CY	PAVEMENT REPAIR, AS PER PLAN, TYPE 2	14
4											4				253	02001	4	CY	PAVEMENT REPAIR, AS PER PLAN, TYPE 3	15
						337584					337584				254	01000	337584	SY	PAVEMENT PLANING, ASPHALT CONCRETE, 1.50"	
						4						4			304	20000	4	CY	AGGREGATE BASE	
				28705	5012						28705	5012			407	20000	33717	GAL	NON-TRACKING TACK COAT	
				192928							192928				421	10011	192928	SY	MICROSURFACING, SURFACE COURSE, AS PER PLAN	15
					1659							1659			424	12000	1659	CY	FINE GRADED POLYMER ASPHALT CONCRETE, TYPE B	
				14076							14076				442	00100	14076	CY	ANTI-SEGREGATION EQUIPMENT	
				583							583				442	10001	583	CY	ASPHALT CONCRETE SURFACE COURSE, 12.5MM, TYPE A (446), AS PER PLAN, PG76-22M	15
				13493							13493				442	10300	13493	CY	ASPHALT CONCRETE SURFACE COURSE, 12.5 MM, TYPE A (447)	
					30							30			605	31100	30	FT	AGGREGATE DRAINS	
3											3				613	41200	3	CY	LOW STRENGTH MORTAR BACKFILL	
				70	222						70	222			617	10100	292	CY	COMPACTED AGGREGATE	
					1.31							1.31			618	40900	1.31	MILE	RUMBLE STRIPES, CENTER LINE (ASPHALT CONCRETE)	
					1.31							1.31			874	21000	1.31	MILE	LONGITUDINAL JOINT PREPARATION	
				56179							56179				897	01010	56179	SY	PAVEMENT PLANING, ASPHALT CONCRETE, CLASS A, 0.5"	
					2150							2150			897	01010	2150	SY	PAVEMENT PLANING, ASPHALT CONCRETE, CLASS A, VARIABLE DEPTH (0.75" AVG.)	

CALCULATED	AMH
CHECKED	KLM
GENERAL SUMMARY	
MRW-71 / 61- 12.19 / 0.00	
24	94

I:\Project+Data\10060_MRW-71-12.19_Design\Roadway\Sheets\10060_DS001.dgn 10060_DS001 8/30/2021 10:05:49 AM anollow


LOCATION								QUANTITIES						REMARKS		
LOCATION	SHEET	COUNTY	ROUTE	BEGIN STA	END STA	BEGIN SLM	END SLM	202	203	304	601	611	611	899	899	
								PIPE REMOVED	EMBANKMENT	AGGREGATE BASE	TIED CONCRETE BLOCK MAT WITH TYPE 2 UNDERLAYMENT, AS PER PLAN	12" CONDUIT, TYPE D, 706.02	CATCH BASIN ADJUSTED TO GRADE	15" DIAMETER CURED-IN-PLACE PIPE LINER	18" DIAMETER CURED-IN-PLACE PIPE LINER	
								FT	CY	CY	SY	FT	EACH	FT	FT	
1	49	MRW	71	834+68.95	834+76.95	15.809	15.810		5		31					
1	57	MRW	71	934+00.00		17.689							4			
1	62	MRW	71	997+50.00		18.892							3			
1	81	MRW	71	645+48.00		12.225								123		
1	82	MRW	71	681+96.48		12.916									95	
2	67	MRW	61	16+63.07		0.315							1			CR-15 APPROACH
2	83	MRW	61	60+47.97	60+85.97	1.145	1.153	38		4		50				
TOTALS CARRIED TO GENERAL SUMMARY								38	5	4	31	50	8	123	95	

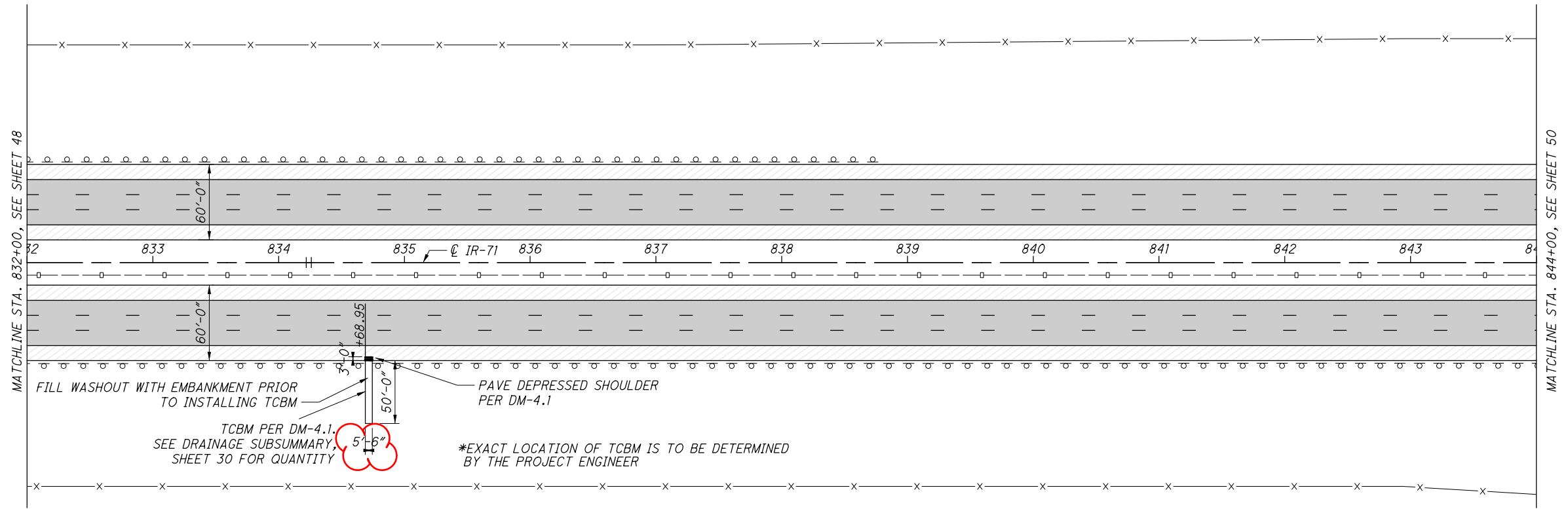
CALCULATED	AMH	CHECKED	KLM
DRAINAGE SUBSUMMARY			
MRW-71/61-			
12.19 / 0.00			
30		94	

I:\ProjectData\10060_MRW-71-12.19\Design\Roadway\Sheets\10060_GPO01.dgn 11/06/2021 10:06:11 AM anollow

LEGEND

 MICROSURFACING

 1.5" RESURFACING



SEE SHEET 26-28 FOR PAVEMENT QUANTITIES
SEE SHEETS 85-87 FOR TRAFFIC CONTROL QUANTITIES
SEE SHEET 31 FOR ROADWAY QUANTITIES
SEE SHEET 30 FOR DRAINAGE QUANTITIES



CALCULATED
AMH
CHECKED
KLM

ROADWAY PLAN - MRW-71
STA. 832+00 TO STA. 844+00

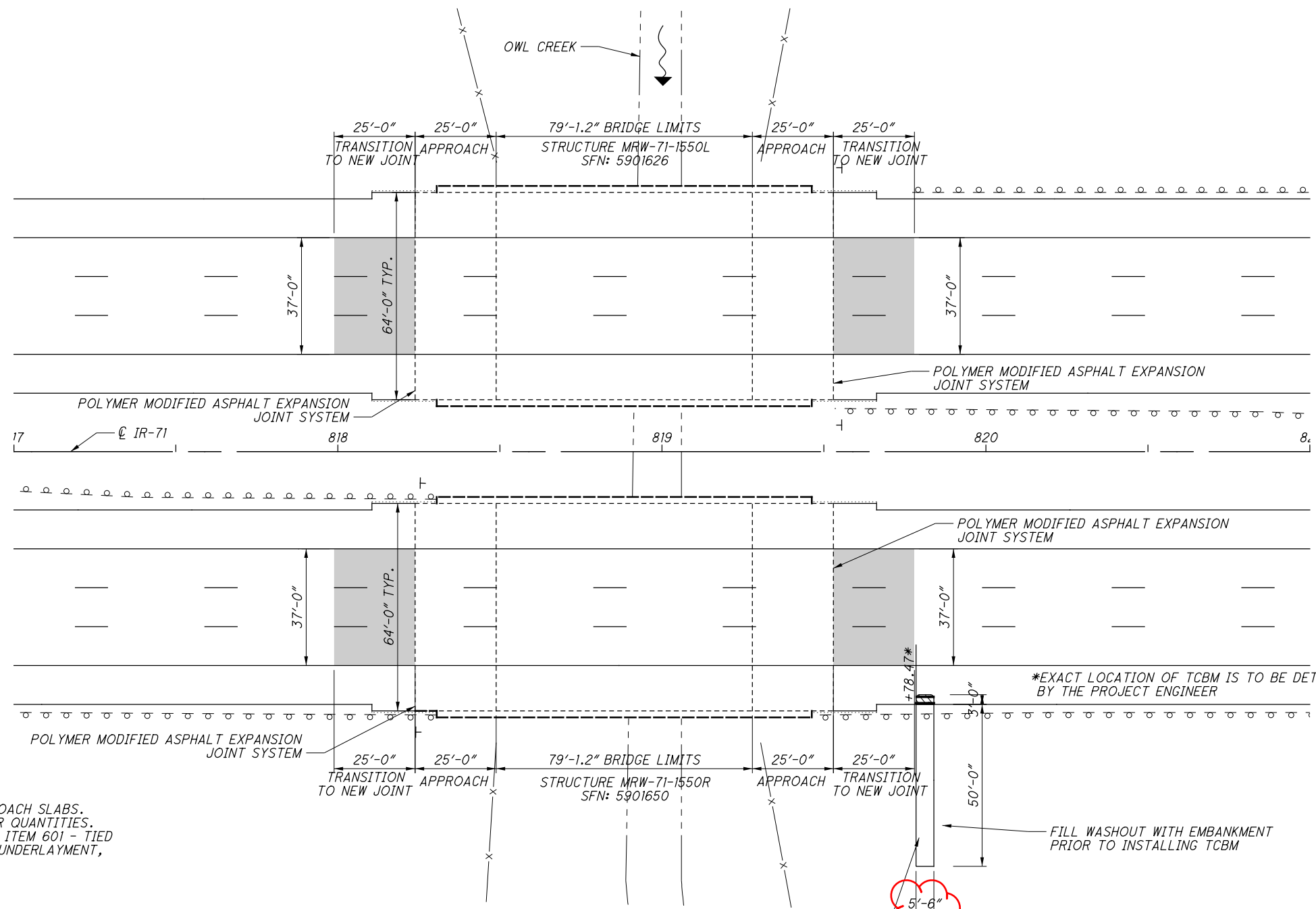
MRW-71/61-
12.19 / 0.00

I:\Project+Data\110060_MRW-71-12.19_Design\Roadway\Sheets\110060_S000.dgn 11/06/2021 10:05:22 AM anollow

SHEET NUMBER					PARTICIPATION				ITEM	ITEM EXT	GRAND TOTAL	UNIT	DESCRIPTION	SEE SHEET NO.
90	91	92	93	94	01/NHS/PV	02/STR/PV	03/TMS/CV	04/TMS/BR						
STRUCTURES OVER 20'														
STRUCTURE MRW-71-1550R SFN: 5901650														
8								8	203	20000	8	CY	EMBANKMENT	
100								100	519	1101	100	SF	PATCHING CONCRETE STRUCTURE, AS PER PLAN	88
31								31	601	21061	31	SY	TIED CONCRETE BLOCK MAT WITH TYPE 2 UNDERLAYMENT, AS PER PLAN	14
53.3								53.3	846	00110	53.3	CF	POLYMER MODIFIED ASPHALT EXPANSION JOINT SYSTEM	
STRUCTURE MRW-71-1550L SFN: 5901626														
100								100	519	1101	100	SF	PATCHING CONCRETE STRUCTURE, AS PER PLAN	88
53.3								53.3	846	00110	53.3	CF	POLYMER MODIFIED ASPHALT EXPANSION JOINT SYSTEM	
STRUCTURE MRW-71-1763R SFN: 5901715														
5								5	203	20000	5	CY	EMBANKMENT	
100								100	519	1101	100	SF	PATCHING CONCRETE STRUCTURE, AS PER PLAN	88
31								31	601	21061	31	SY	TIED CONCRETE BLOCK MAT WITH TYPE 2 UNDERLAYMENT, AS PER PLAN	14
52.5								52.5	846	00110	52.5	CF	POLYMER MODIFIED ASPHALT EXPANSION JOINT SYSTEM	
STRUCTURE MRW-71-1763L SFN: 5901685														
100								100	519	1101	100	SF	PATCHING CONCRETE STRUCTURE, AS PER PLAN	88
52.5								52.5	846	00110	52.5	CF	POLYMER MODIFIED ASPHALT EXPANSION JOINT SYSTEM	
STRUCTURE MRW-71-1877 SFN: 5901804														
		100						100	519	1101	100	SF	PATCHING CONCRETE STRUCTURE, AS PER PLAN	88
		53.3						53.3	846	00110	53.3	CF	POLYMER MODIFIED ASPHALT EXPANSION JOINT SYSTEM	
STRUCTURE MRW-71-1876 SFN: 5901774														
		100						100	519	1101	100	SF	PATCHING CONCRETE STRUCTURE, AS PER PLAN	88
		53.3						53.3	846	00110	53.3	CF	POLYMER MODIFIED ASPHALT EXPANSION JOINT SYSTEM	
STRUCTURE MRW-61-0139 SFN: 5900883														
			2972					2972	512	10050	2972	SY	SEALING OF CONCRETE SURFACES (NON-EPOXY)	
STRUCTURE MRW-61-0323 SFN: 5900921														
				62.5				62.5	517	75600	62.5	FT	DEEP BEAM BRIDGE RETROFIT RAILING	

DESIGN AGENCY OHIO DEPARTMENT OF TRANSPORTATION DISTRICT 6
DATE MM/DD/YY XXX REVIEWED FILE NUMBER 0
DRAWN AMH REVIS XXX
DESIGNED AMH CHECKED XXX
MORROW COUNTY STA. 0+00 STA. 0+00
ESTIMATED STRUCTURE QUANTITIES
MRW-71/61- 12.19/0.00 PID No. 110060
2 / 8
89 94

I:\ProjectData\110060_MRW-71-12.19_Design\Roadway\Sheets\110060_SD001.dgn 11/30/2021 10:04:52 AM anollowl

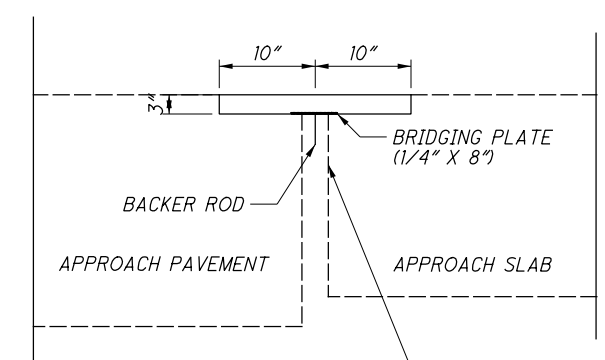


- NOTES:
- DO NOT PAVE BRIDGE DECK OR APPROACH SLABS.
 - SEE SHEET 26 FOR PAVEMENT REPAIR QUANTITIES.
 - SEE GENERAL NOTES, SHEET 14, FOR ITEM 601 - TIED CONCRETE BLOCK MAT WITH TYPE 2 UNDERLAYMENT, AS PER PLAN NOTE.

LOCATION		QUANTITIES				REMARKS
STRUCTURE NO.	SFN	203	519	601	846	
		EMBANKMENT	PATCHING CONCRETE STRUCTURE, AS PER PLAN	TIED CONCRETE BLOCK MAT WITH TYPE 2 UNDERLAYMENT, AS PER PLAN	POLYMER MODIFIED ASPHALT EXPANSION JOINT SYSTEM	
		CY	SF	SY	CF	
MRW-71-1550R	5901650	8	100	31	53.3	APPROACH SLAB APPROACH PAVEMENT SIDE SLOPES
MRW-71-1550L	5901626		100		53.3	APPROACH SLAB APPROACH PAVEMENT
QUANTITIES CARRIED TO STRUCTURE QUANTITIES						

TCBM W/ TYPE 2 UNDERLAYMENT PER DM-4.1

POLYMER MODIFIED JOINT DETAIL



SAW CUT FILL DEPTH OF THE ASPHALT TO EXPOSE 3" EXPANSION GAP. INCLUDED WITH POLYMER MODIFIED JOINT PAYMENT



DESIGN AGENCY: OHIO DEPARTMENT OF TRANSPORTATION DISTRICT 6

DATE: MM/DD/YY
REVIEWED: XXX
STRUCTURE FILE NUMBER: 5901650 & 5901626

DRAWN: AMH
CHECKED: XXX

DESIGNED: AMH
CHECKED: XXX

MORROW COUNTY
STA. 817+00
STA. 821+00

BRIDGE SITE PLAN
MRW-71-1550L & MRW-71-1550R
OVER OWL CREEK

MRW-71/61-
12.19/0.00
PID No. 110060

4/8

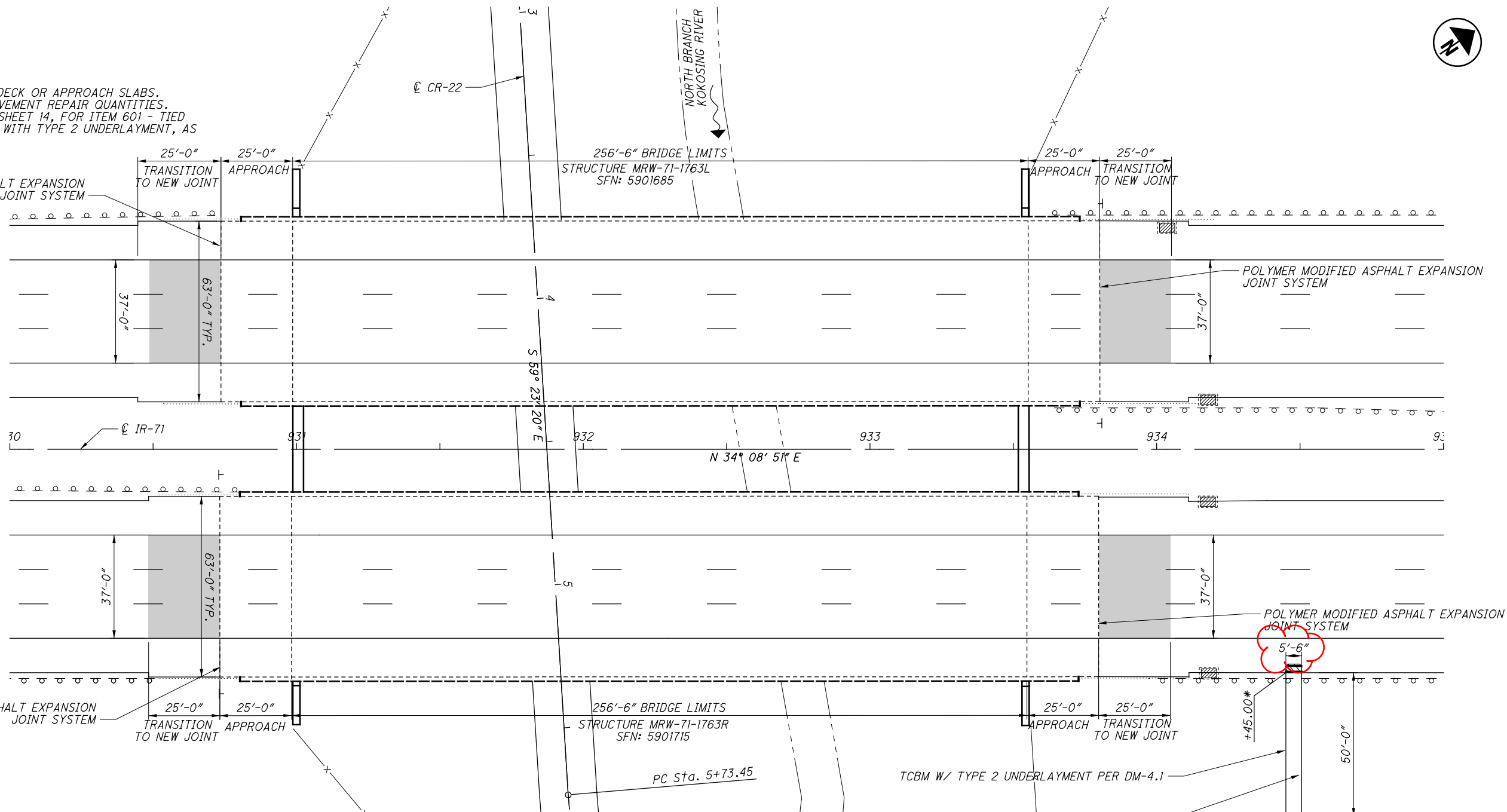
90
94

3" PAVEMENT REPAIR

NOTES:

- DO NOT PAVE BRIDGE DECK OR APPROACH SLABS.
- SEE SHEET 26 FOR PAVEMENT REPAIR QUANTITIES.
- SEE GENERAL NOTES, SHEET 14, FOR ITEM 601 - TIED CONCRETE BLOCK MAT WITH TYPE 2 UNDERLAYMENT, AS PER PLAN NOTE.

POLYMER MODIFIED ASPHALT EXPANSION JOINT SYSTEM



DESIGN AGENCY
OHIO DEPARTMENT OF
TRANSPORTATION DISTRICT 6

DATE
MM/DD/YY
XXX
STRUCTURE FILE NUMBER
5901715 & 5901685

DRAWN
AMH
REVISOR
XXX

DESIGNED
AMH
CHECKED
XXX

MORROW COUNTY
STA. 930+00
STA. 935+00

BRIDGE SITE PLAN
MRW-71-1763L & MRW-71-1763R
OVER CR-22 & KOKOSING RIVER

MRW-71/61-
12.19/0.00
PID No. 110060

5 / 8

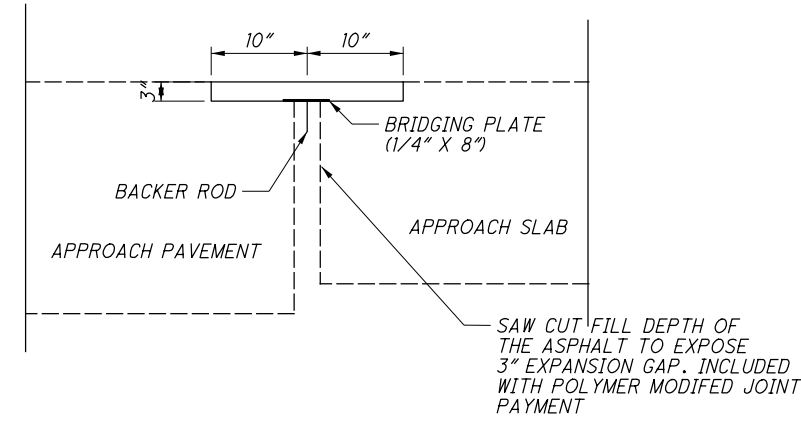
91
94

I:\ProjectData\110060_MRW-71-12.19_Design\Roadway\Sheets\110060_SDD01.dgn 110060_SDD02 8/30/2021 10:04:33 AM ahhollow

LOCATION		REMARKS			
STRUCTURE NO.	SFN	EMBANKMENT	PATCHING CONCRETE STRUCTURE, AS PER PLAN	TIED CONCRETE BLOCK MAT WITH TYPE 2 UNDERLAYMENT, AS PER PLAN	POLYMER MODIFIED ASPHALT EXPANSION JOINT SYSTEM
		CY	SF	SY	CF
MRW-71-1763R	5901715		100		52.5
		5		31	
MRW-71-1763L	5901685		100		52.5
QUANTITIES CARRIED TO STRUCTURE QUANTITIES					

FILL WASHOUT WITH EMBANKMENT PRIOR TO INSTALLING TCBM
*EXACT LOCATION OF TCBM IS TO BE DETERMINED BY THE PROJECT ENGINEER

POLYMER MODIFIED JOINT DETAIL



SAW CUT FILL DEPTH OF THE ASPHALT TO EXPOSE 3" EXPANSION GAP. INCLUDED WITH POLYMER MODIFIED JOINT PAYMENT