



I:\Project+Data\10060\_MRW-71-12.19\_Design\Roadway\Sheets\10060\_DS00.dgn 10060\_DS00 8/30/2021 10:05:49 AM anollow


LOCATION								QUANTITIES						REMARKS		
LOCATION	SHEET	COUNTY	ROUTE	BEGIN STA	END STA	BEGIN SLM	END SLM	202	203	304	601	611	611	899	899	
								PIPE REMOVED	EMBANKMENT	AGGREGATE BASE	TIED CONCRETE BLOCK MAT WITH TYPE 2 UNDERLAYMENT, AS PER PLAN	12" CONDUIT, TYPE D, 706.02	CATCH BASIN ADJUSTED TO GRADE	15" DIAMETER CURED-IN-PLACE PIPE LINER	18" DIAMETER CURED-IN-PLACE PIPE LINER	
								FT	CY	CY	SY	FT	EACH	FT	FT	
1	49	MRW	71	834+68.95	834+76.95	15.809	15.810		5		31					
1	57	MRW	71	934+00.00		17.689							4			
1	62	MRW	71	997+50.00		18.892							3			
1	81	MRW	71	645+48.00		12.225								123		
1	82	MRW	71	681+96.48		12.916									95	
2	67	MRW	61	16+63.07		0.315							1			CR-15 APPROACH
2	83	MRW	61	60+47.97	60+85.97	1.145	1.153	38		4		50				
TOTALS CARRIED TO GENERAL SUMMARY								38	5	4	31	50	8	123	95	

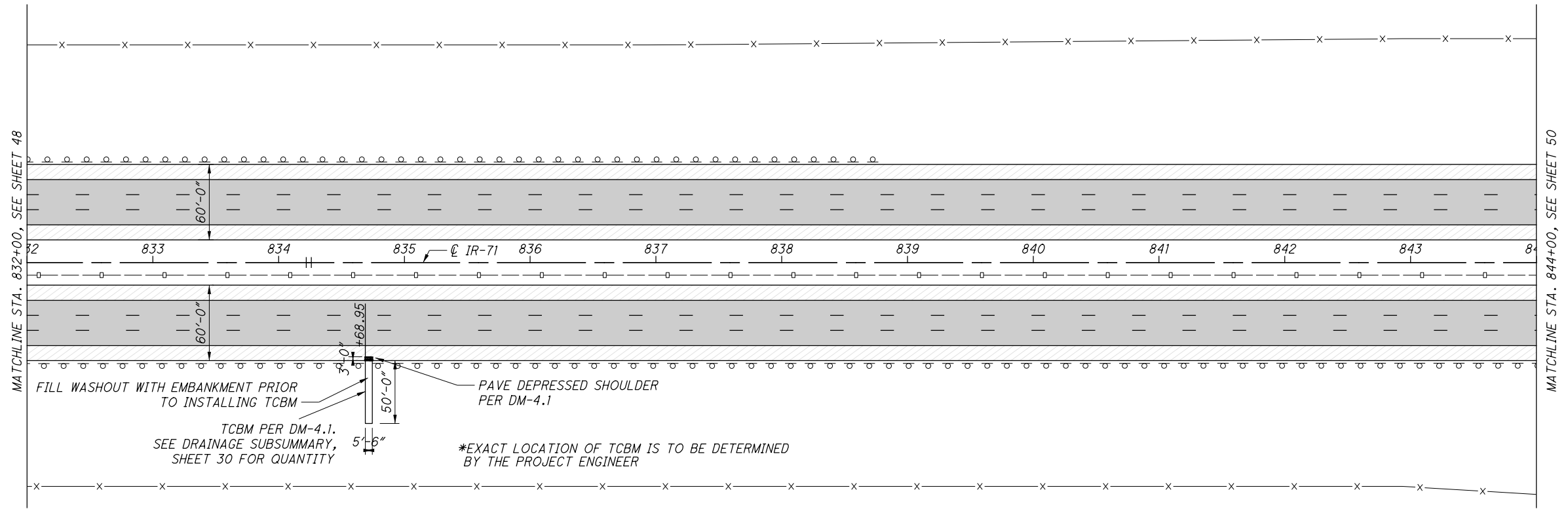
CALCULATED	AMH	CHECKED	KLM
DRAINAGE SUBSUMMARY			
MRW-71/61-			
12.19 / 0.00			
30		94	

I:\ProjectData\10060\_MRW-71-12.19\Design\Roadway\Sheets\10060\_GPO01.dgn 11/06/2021 10:06:11 AM anollow

LEGEND

 MICROSURFACING

 1.5" RESURFACING



SEE SHEET 26-28 FOR PAVEMENT QUANTITIES  
SEE SHEETS 85-87 FOR TRAFFIC CONTROL QUANTITIES  
SEE SHEET 31 FOR ROADWAY QUANTITIES  
SEE SHEET 30 FOR DRAINAGE QUANTITIES



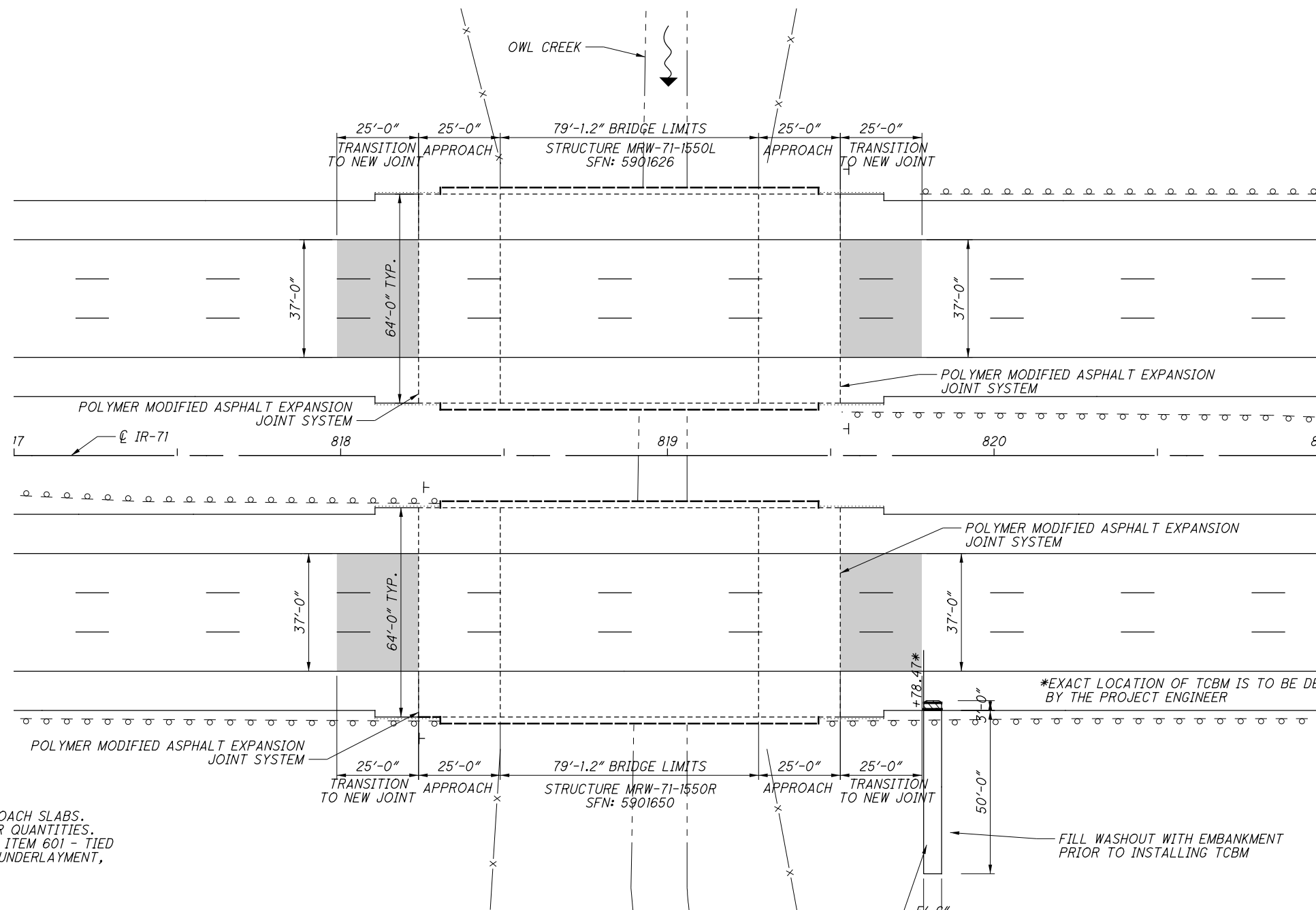
CALCULATED  
AMH  
CHECKED  
KLM

**ROADWAY PLAN - MRW-71**  
**STA. 832+00 TO STA. 844+00**

**MRW-71/61-**  
**12.19 / 0.00**



I:\ProjectData\110060\_MRW-71-12.19\_Design\Roadway\Sheets\110060\_SDP001.dgn 11/06/2021 10:04:52 AM anollowl

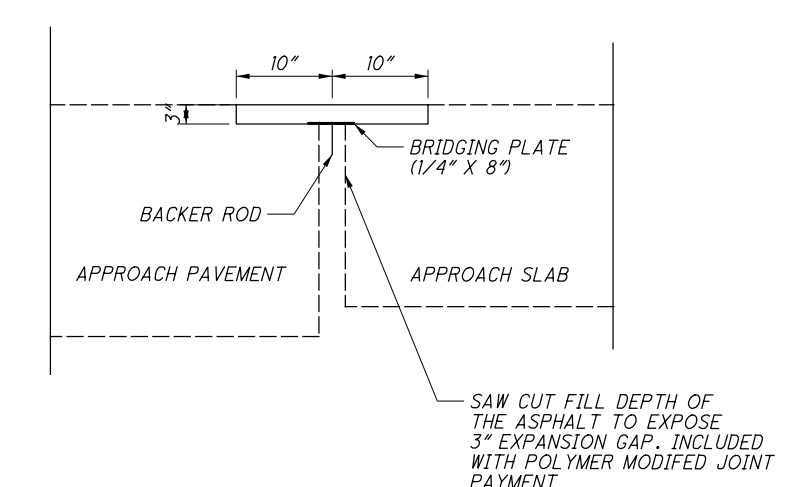


- NOTES:**
- DO NOT PAVE BRIDGE DECK OR APPROACH SLABS.
  - SEE SHEET 26 FOR PAVEMENT REPAIR QUANTITIES.
  - SEE GENERAL NOTES, SHEET 14, FOR ITEM 601 - TIED CONCRETE BLOCK MAT WITH TYPE 2 UNDERLAYMENT, AS PER PLAN NOTE.

STRUCTURE NO.	SFN	QUANTITIES				REMARKS
		203	519	601	846	
		EMBANKMENT	PATCHING CONCRETE STRUCTURE, AS PER PLAN	TIED CONCRETE BLOCK MAT WITH TYPE 2 UNDERLAYMENT, AS PER PLAN	POLYMER MODIFIED ASPHALT EXPANSION JOINT SYSTEM	
		CY	SF	SY	CF	
MRW-71-1550R	5901650		100		53.3	APPROACH SLAB APPROACH PAVEMENT
		8		31		SIDE SLOPES
MRW-71-1550L	5901626		100		53.3	APPROACH SLAB APPROACH PAVEMENT
QUANTITIES CARRIED TO STRUCTURE QUANTITIES						

TCBM W/ TYPE 2 UNDERLAYMENT PER DM-4.1

*POLYMER MODIFIED JOINT DETAIL*



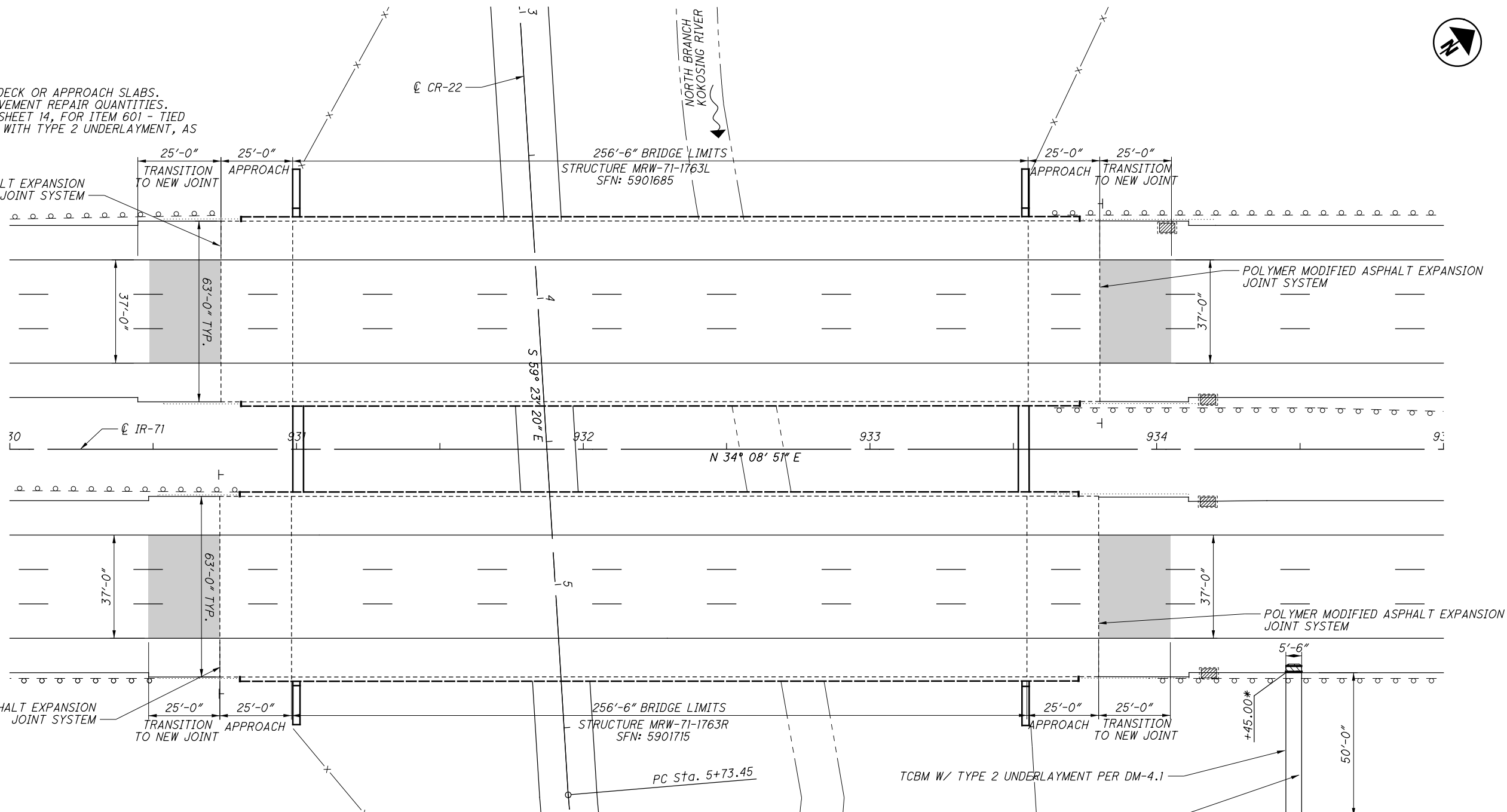
DESIGN AGENCY	OHIO DEPARTMENT OF TRANSPORTATION DISTRICT 6
DATE	MM/DD/YY
REVIEWED	XXX
DRAWN	AMH
DESIGNED	AMH
CHECKED	XXX
STRUCTURE FILE NUMBER	5901650 & 5901626
REVISIONS	XXX
MORROW COUNTY	STA. 817+00 STA. 821+00
<b>BRIDGE SITE PLAN</b>	MRW-71-1550L & MRW-71-1550R OVER OWL CREEK
<b>MRW-71/61-12.19/0.00</b>	PID No. 110060
4/8	
90	94

3" PAVEMENT REPAIR

NOTES:

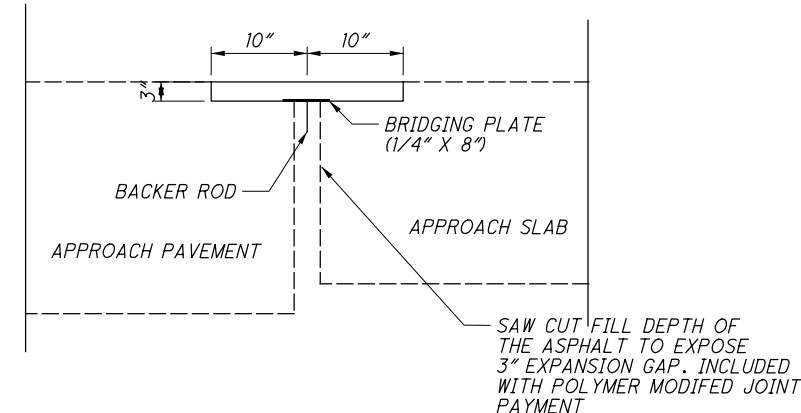
- DO NOT PAVE BRIDGE DECK OR APPROACH SLABS.
- SEE SHEET 26 FOR PAVEMENT REPAIR QUANTITIES.
- SEE GENERAL NOTES, SHEET 14, FOR ITEM 601 - TIED CONCRETE BLOCK MAT WITH TYPE 2 UNDERLAYMENT, AS PER PLAN NOTE.

POLYMER MODIFIED ASPHALT EXPANSION JOINT SYSTEM



LOCATION		REMARKS			
STRUCTURE NO.	SFN	EMBANKMENT	PATCHING CONCRETE STRUCTURE, AS PER PLAN	TIED CONCRETE BLOCK MAT WITH TYPE 2 UNDERLAYMENT, AS PER PLAN	POLYMER MODIFIED ASPHALT EXPANSION JOINT SYSTEM
		CY	SF	SY	CF
MRW-71-1763R	5901715		100		52.5
		5		31	
MRW-71-1763L	5901685		100		52.5
QUANTITIES CARRIED TO STRUCTURE QUANTITIES					

POLYMER MODIFIED JOINT DETAIL



I:\ProjectData\110060\_MRW-71-1763R\Design\Roadway\Sheets\110060\_SDP001.dgn 110060\_SDP002 8/30/2021 10:04:33 AM ahhollow

DESIGN AGENCY: OHIO DEPARTMENT OF TRANSPORTATION DISTRICT 6

DATE: MM/DD/YY

REVIEWED: XXX

STRUCTURE FILE NUMBER: 5901715 & 5901685

DRAWN: AMH

CHECKED: XXX

DESIGNED: AMH

MORROW COUNTY

STA.: 930+00

STA.: 935+00

BRIDGE SITE PLAN

MRW-71-1763L & MRW-71-1763R

OVER CR-22 & KOKOSING RIVER

MRW-71/61-12.19/0.00

PID No. 110060

5/8

91/94