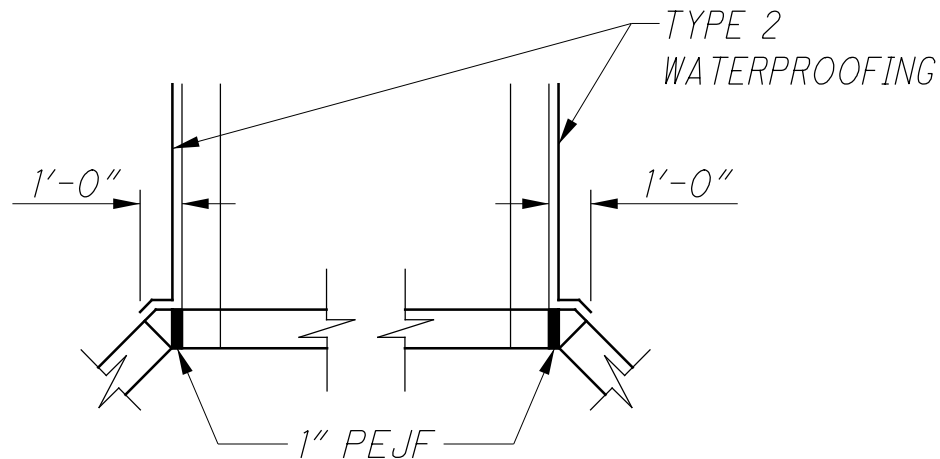
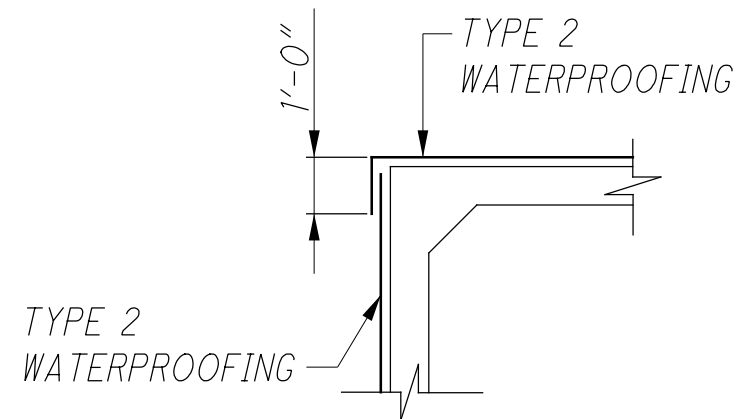


## **WATERPROOFING CALCULATIONS**



**PLAN VIEW**



**SECTION VIEW**

TYPE 2 WATERPROOFING (Top)

$$72 \times (9.33 + 2) / 9 = 90.64 \text{ or } 91 \text{ Sq.Yd.}$$

TYPE 2 WATERPROOFING (Sides)

$$(74 \times 6.34) \times 2 / 9 = 104.26 \text{ or } 105 \text{ Sq.Yd.}$$

### **TYPE 2 WATERPROOFING SUMMARY**

Total, 91 (Top) + 105 (Sides) = 196 Sq.Yd.