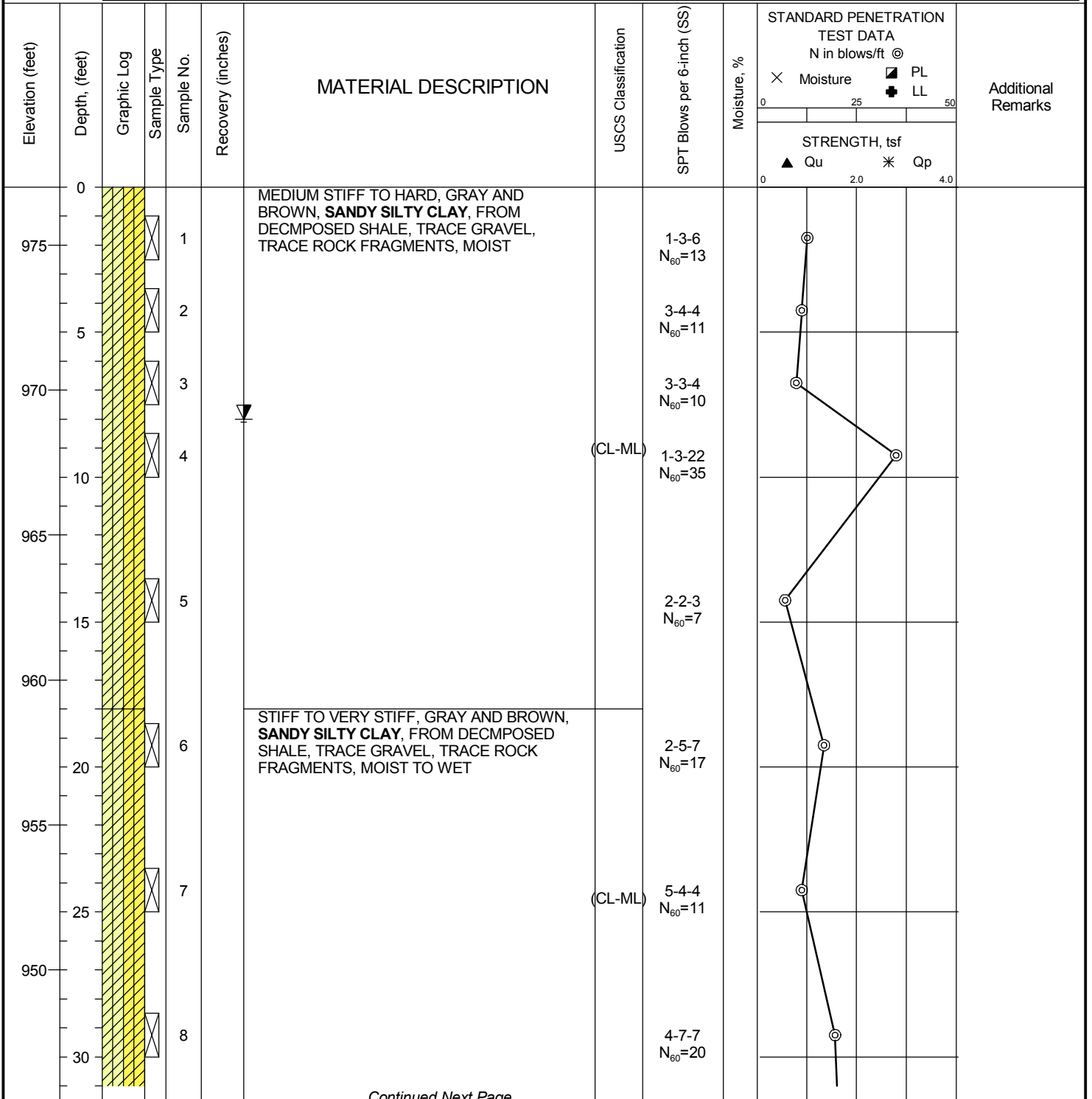


DATE STARTED: 11/21/22 **DRILL COMPANY:** HAD
DATE COMPLETED: 11/21/22 **DRILLER:** B.W. **LOGGED BY:** J.Y.
COMPLETION DEPTH: 36.0 ft **DRILL RIG:** Geoprobe 7822
BENCHMARK: N/A **DRILLING METHOD:** Hollow Stem Auger
ELEVATION: 977 ft **SAMPLING METHOD:** 2-in SS
LATITUDE: 39.78574° **HAMMER TYPE:** Automatic
LONGITUDE: -81.71336° **EFFICIENCY:** 84%
STATION: N/A **OFFSET:** N/A **REVIEWED BY:** K.K./P.H.
REMARKS: N_{60} denotes the normalization to 60% efficiency as described in ASTM D4633. Soil Symbol in "()" = Visual Classification

BORING B-01

Water	▽	While Drilling	- feet
	▼	Upon Completion	- feet
	▽	Caved	8.0 feet

BORING LOCATION: _____



Continued Next Page



Professional Service Industries, Inc.
 4960 Vulcan Ave, Suite C
 Columbus, OH 43228
 Telephone: (614) 876-8000

PROJECT NO.: 01022228
PROJECT: Boat Ramp Investigation
LOCATION: Dye Cemetery Road,
 Cumberland, Ohio

DATE STARTED: 11/21/22
DATE COMPLETED: 11/21/22
COMPLETION DEPTH: 36.0 ft
BENCHMARK: N/A
ELEVATION: 977 ft
LATITUDE: 39.78574°
LONGITUDE: -81.71336°
STATION: N/A **OFFSET:** N/A
REMARKS: N_{60} denotes the normalization to 60% efficiency as described in ASTM D4633. Soil Symbol in "()" = Visual Classification

DRILL COMPANY: HAD
DRILLER: B.W. **LOGGED BY:** J.Y.
DRILL RIG: Geoprobe 7822
DRILLING METHOD: Hollow Stem Auger
SAMPLING METHOD: 2-in SS
HAMMER TYPE: Automatic
EFFICIENCY: 84%
REVIEWED BY: K.K./P.H

BORING B-01

Water
 ∇ While Drilling - feet
 ▼ Upon Completion - feet
 ▽ Caved 8.0 feet

BORING LOCATION:

Elevation (feet)	Depth (feet)	Graphic Log	Sample Type	Sample No.	Recovery (inches)	MATERIAL DESCRIPTION	USCS Classification	SPT Blows per 6-inch (SS)	Moisture, %	STANDARD PENETRATION TEST DATA N in blows/ft @	Additional Remarks
945	35			9		STIFF TO VERY STIFF, GRAY AND BROWN, SANDY SILTY CLAY, FROM DECOMPOSED SHALE, TRACE GRAVEL, TRACE ROCK FRAGMENTS, MOIST TO WET	(CL-ML)	7-7-8 $N_{60}=21$		X Moisture □ PL + LL 0 25 50 STRENGTH, tsf ▲ Qu * Qp 0 2.0 4.0	
						END OF BORING AT 36.0 FT					



Professional Service Industries, Inc.
 4960 Vulcan Ave, Suite C
 Columbus, OH 43228
 Telephone: (614) 876-8000

PROJECT NO.: 01022228
PROJECT: Boat Ramp Investigation
LOCATION: Dye Cemetery Road,
 Cumberland, Ohio

DATE STARTED: 11/21/22 **DRILL COMPANY:** HAD
DATE COMPLETED: 11/21/22 **DRILLER:** B.W. **LOGGED BY:** J.Y.
COMPLETION DEPTH: 26.0 ft **DRILL RIG:** Geoprobe 7822
BENCHMARK: N/A **DRILLING METHOD:** Hollow Stem Auger
ELEVATION: 976 ft **SAMPLING METHOD:** 2-in SS
LATITUDE: 39.78576° **HAMMER TYPE:** Automatic
LONGITUDE: -81.71323° **EFFICIENCY:** 84%
STATION: N/A **OFFSET:** N/A **REVIEWED BY:** K.K./P.H.
REMARKS: N_{60} denotes the normalization to 60% efficiency as described in ASTM D4633. Soil Symbol in "()" = Visual Classification

BORING B-02

Water
 ▽ While Drilling - feet
 ▼ Upon Completion - feet
 ▽ Caved 12.0 feet

BORING LOCATION:

Elevation (feet)	Depth (feet)	Graphic Log	Sample Type	Sample No.	Recovery (inches)	MATERIAL DESCRIPTION	USCS Classification	SPT Blows per 6-inch (SS)	Moisture, %	STANDARD PENETRATION TEST DATA N in blows/ft ⊙ X Moisture ⊠ PL ⊕ LL	STRENGTH, tsf ▲ Qu * Qp	Additional Remarks
975	0			1		STIFF TO VERY STIFF, GRAY AND BROWN, SANDY SILTY CLAY , FROM DECPOSED SHALE, TRACE GRAVEL, TRACE ROCK FRAGMENTS, MOIST		3-2-7 $N_{60}=13$				
	5			2				1-7-7 $N_{60}=20$				
970				3				6-5-4 $N_{60}=13$				
	10			4				1-3-5 $N_{60}=11$				
965						▼		(CL-ML)				
	15			5				1-5-5 $N_{60}=14$				
960				6				2-6-3 $N_{60}=13$				
955						HARD, GRAY AND BROWN, SANDY SILTY CLAY , FROM DECPOSED SHALE, TRACE GRAVEL, TRACE ROCK FRAGMENTS, MOIST TO WET	(CL-ML)	10-14-9 $N_{60}=32$				
950	25		7			END OF BORING DUE TO AUGER REFUSAL AT 26.0 FT						



Professional Service Industries, Inc.
 4960 Vulcan Ave, Suite C
 Columbus, OH 43228
 Telephone: (614) 876-8000

PROJECT NO.: 01022228
PROJECT: Boat Ramp Investigation
LOCATION: Dye Cemetery Road,
 Cumberland, Ohio

DATE STARTED: 11/17/22 **DRILL COMPANY:** HAD
DATE COMPLETED: 11/17/22 **DRILLER:** S.H. **LOGGED BY:** L.P.
COMPLETION DEPTH: 30.0 ft **DRILL RIG:** CME 55
BENCHMARK: N/A **DRILLING METHOD:** Hollow Stem Auger
ELEVATION: 943 ft **SAMPLING METHOD:** 2-in SS
LATITUDE: 39.78244° **HAMMER TYPE:** Automatic
LONGITUDE: -81.70246° **EFFICIENCY:** 83%
STATION: N/A **OFFSET:** N/A **REVIEWED BY:** K.K./P.H.

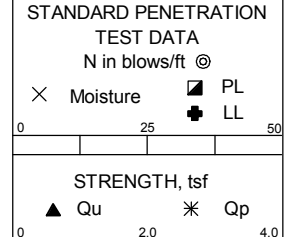
BORING B-03

Water	▽ While Drilling	- feet
	▼ Upon Completion	22.0 feet
	▽ Caved	28.0 feet

BORING LOCATION:

REMARKS: N_{60} denotes the normalization to 60% efficiency as described in ASTM D4633. Soil Symbol in "()" = Visual Classification

Elevation (feet)	Depth (feet)	Graphic Log	Sample Type	Sample No.	Recovery (inches)	MATERIAL DESCRIPTION	USCS Classification	SPT Blows per 6-inch (SS)	Moisture, %	STANDARD PENETRATION TEST DATA N in blows/ft @	Additional Remarks
940	0			1		VERY STIFF, GRAY AND BROWN, SANDY SILTY CLAY , FROM DECMPOSED SHALE, TRACE GRAVEL, TRACE ROCK FRAGMENTS, MOIST	(CL-ML)	3-7-10 $N_{60}=24$	○	PL LL	
935	5			2		SOFT TO MEDIUM STIFF, GRAY AND BROWN, SANDY SILTY CLAY , FROM DECMPOSED SHALE, TRACE GRAVEL, TRACE ROCK FRAGMENTS, MOIST		14-14-4 $N_{60}=25$	○		
				3				1-1-2 $N_{60}=4$	○		
				4				1-1-4 $N_{60}=7$	○		
930	10			5				4-1-4 $N_{60}=7$	○		
				6				1-1-3 $N_{60}=6$	○		
925	15			7				5-7-7 $N_{60}=19$	○		
920	20			8				7-7-6 $N_{60}=18$	○		
915	25					END OF BORING AT 30.0 FT					



Professional Service Industries, Inc.
 4960 Vulcan Ave, Suite C
 Columbus, OH 43228
 Telephone: (614) 876-8000

PROJECT NO.: 01022228
PROJECT: Boat Ramp Investigation
LOCATION: Dye Cemetery Road,
 Cumberland, Ohio

DATE STARTED: 11/17/22 **DRILL COMPANY:** HAD
DATE COMPLETED: 11/17/22 **DRILLER:** S.H. **LOGGED BY:** L.P.
COMPLETION DEPTH: 49.0 ft **DRILL RIG:** CME 55
BENCHMARK: N/A **DRILLING METHOD:** Hollow Stem Auger
ELEVATION: 943 ft **SAMPLING METHOD:** 2-in SS
LATITUDE: 39.78241° **HAMMER TYPE:** Automatic
LONGITUDE: -81.70237° **EFFICIENCY:** 83%
STATION: N/A **OFFSET:** N/A **REVIEWED BY:** K.K./P.H.

BORING B-04		
Water	▽	While Drilling - feet
	▼	Upon Completion 47.0 feet
	▽	Caved 49.0 feet

BORING LOCATION:

REMARKS: N_{60} denotes the normalization to 60% efficiency as described in ASTM D4633. Soil Symbol in "()" = Visual Classification

Elevation (feet)	Depth (feet)	Graphic Log	Sample Type	Sample No.	Recovery (inches)	MATERIAL DESCRIPTION	USCS Classification	SPT Blows per 6-inch (SS)	Moisture, %	STANDARD PENETRATION TEST DATA N in blows/ft @	Additional Remarks
										X Moisture ◻ PL ◻ LL ▲ Qu * Qp	
940	0			1		MEDIUM STIFF TO VERY STIFF, BROWN AND GRAY, SANDY SILTY CLAY , FROM DECMPOSED SHALE, TRACE GRAVEL, TRACE ROCK FRAGMENTS, MOIST	(CL-ML)	1-1-3 $N_{60}=6$ 2-4-6 $N_{60}=14$ 6-5-6 $N_{60}=15$ 8-10-5 $N_{60}=21$			
	5			2							
				3							
				4							
935	10			5			SOFT TO MEDIUM STIFF, GRAY AND BROWN, SANDY SILTY CLAY , FROM DECMPOSED SHALE, TRACE GRAVEL, TRACE ROCK FRAGMENTS, MOIST TO WET	(CL-ML)	1-1-1 $N_{60}=3$ 2-2-3 $N_{60}=7$ 2-2-2 $N_{60}=6$		
				6							
				7							
930	15			8							
				9			STIFF, GRAY AND BROWN, SANDY SILTY CLAY , FROM DECMPOSED SHALE, TRACE GRAVEL, TRACE ROCK FRAGMENTS, WET	(CL-ML)	7-6-5 $N_{60}=15$		
925	20			10			STIFF TO VERY STIFF, GRAY AND BROWN, SANDY SILTY CLAY , FROM DECMPOSED SHALE, TRACE GRAVEL, TRACE ROCK FRAGMENTS, MOIST TO WET	(CL-ML)	3-5-5 $N_{60}=14$		
920	25										
915	30		11								

Continued Next Page



Professional Service Industries, Inc.
 4960 Vulcan Ave, Suite C
 Columbus, OH 43228
 Telephone: (614) 876-8000

PROJECT NO.: 01022228
PROJECT: Boat Ramp Investigation
LOCATION: Dye Cemetery Road,
 Cumberland, Ohio

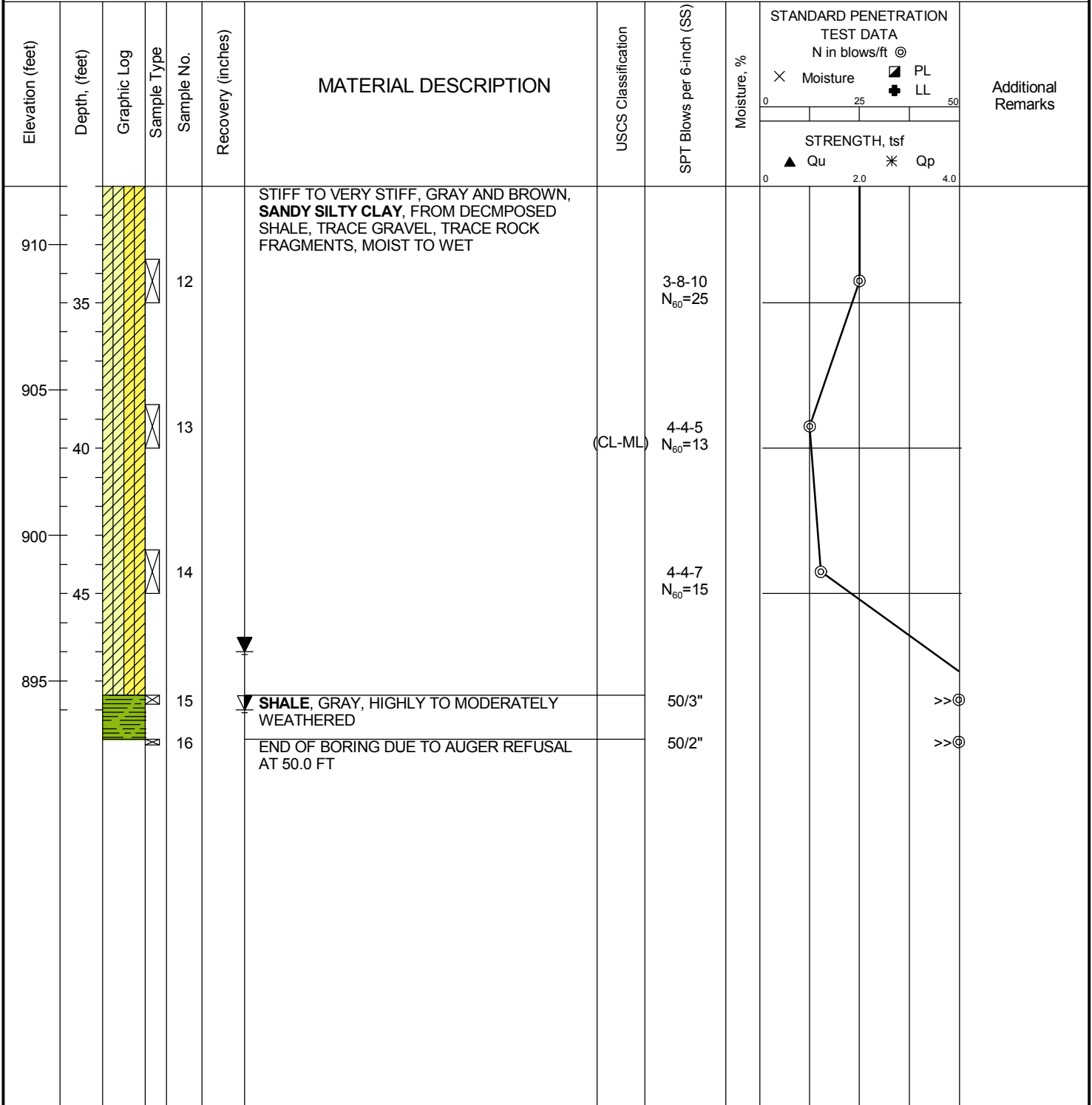
DATE STARTED: 11/17/22 **DRILL COMPANY:** HAD
DATE COMPLETED: 11/17/22 **DRILLER:** S.H. **LOGGED BY:** L.P.
COMPLETION DEPTH: 49.0 ft **DRILL RIG:** CME 55
BENCHMARK: N/A **DRILLING METHOD:** Hollow Stem Auger
ELEVATION: 943 ft **SAMPLING METHOD:** 2-in SS
LATITUDE: 39.78241° **HAMMER TYPE:** Automatic
LONGITUDE: -81.70237° **EFFICIENCY:** 83%
STATION: N/A **OFFSET:** N/A **REVIEWED BY:** K.K./P.H.

BORING B-04

Water	▽ While Drilling	- feet
	▼ Upon Completion	47.0 feet
	▽ Caved	49.0 feet

BORING LOCATION:

REMARKS: N_{60} denotes the normalization to 60% efficiency as described in ASTM D4633. Soil Symbol in "()" = Visual Classification



Professional Service Industries, Inc.
 4960 Vulcan Ave, Suite C
 Columbus, OH 43228
 Telephone: (614) 876-8000

PROJECT NO.: 01022228
PROJECT: Boat Ramp Investigation
LOCATION: Dye Cemetery Road,
 Cumberland, Ohio

DATE STARTED: 11/22/22 **DRILL COMPANY:** HAD
DATE COMPLETED: 11/22/22 **DRILLER:** B.W. **LOGGED BY:** J.Y.
COMPLETION DEPTH: 30.0 ft **DRILL RIG:** Geoprobe 7822
BENCHMARK: N/A **DRILLING METHOD:** Hollow Stem Auger
ELEVATION: 939 ft **SAMPLING METHOD:** 2-in SS
LATITUDE: 39.78114° **HAMMER TYPE:** Automatic
LONGITUDE: -81.69702° **EFFICIENCY:** 84%
STATION: N/A **OFFSET:** N/A **REVIEWED BY:** K.K./P.H.
REMARKS: N_{60} denotes the normalization to 60% efficiency as described in ASTM D4633. Soil Symbol in "()" = Visual Classification

BORING B-05

Water
 ∇ While Drilling - feet
 ▼ Upon Completion - feet
 ∇ Caved 6.0 feet

BORING LOCATION:

Elevation (feet)	Depth (feet)	Graphic Log	Sample Type	Sample No.	Recovery (inches)	MATERIAL DESCRIPTION	USCS Classification	SPT Blows per 6-inch (SS)	Moisture, %	STANDARD PENETRATION TEST DATA N in blows/ft @	Additional Remarks
										X Moisture ◻ PL ◻ LL ▲ Qu * Qp	
0	0			1		STIFF TO VERY STIFF, BROWN AND GRAY, SANDY SILTY CLAY , FROM DECOMPOSED SHALE, TRACE GRAVEL, TRACE ROCK FRAGMENTS, MOIST	(CL-ML)	3-3-5 $N_{60}=11$			
935	5			2			(CL-ML)	1-3-4 $N_{60}=10$			
930	10			4		MEDIUM STIFF TO VERY STIFF, GRAY, SANDY SILTY CLAY , FROM DECOMPOSED SHALE, TRACE GRAVEL, TRACE ROCK FRAGMENTS, MOIST	(CL-ML)	3-6-7 $N_{60}=18$			
925	15			5		SOFT TO MEDIUM STIFF, GRAY AND BROWN, SANDY SILTY CLAY , FROM DECOMPOSED SHALE, TRACE GRAVEL, TRACE ROCK FRAGMENTS, MOIST TO WET	(CL-ML)	2-2-3 $N_{60}=7$			
920	20			6		LOOSE TO MEDIUM DENSE, GRAY AND BROWN, SILTY SAND WITH GRAVEL , TRACE CLAY, TRACE ROCK FRAGMENTS, MOIST TO WET	(SM)	6-2-1 $N_{60}=4$			
915	25			7			(SM)	3-2-2 $N_{60}=6$			
910	30			8		END OF BORING AT 30.0 FT		2-1-8 $N_{60}=13$			
								7-4-4 $N_{60}=11$			



Professional Service Industries, Inc.
 4960 Vulcan Ave, Suite C
 Columbus, OH 43228
 Telephone: (614) 876-8000

PROJECT NO.: 01022228
PROJECT: Boat Ramp Investigation
LOCATION: Dye Cemetery Road,
 Cumberland, Ohio

DATE STARTED: 11/22/22 **DRILL COMPANY:** HAD
DATE COMPLETED: 11/22/22 **DRILLER:** B.W. **LOGGED BY:** J.Y.
COMPLETION DEPTH: 27.0 ft **DRILL RIG:** Geoprobe 7822
BENCHMARK: N/A **DRILLING METHOD:** Hollow Stem Auger
ELEVATION: 938 ft **SAMPLING METHOD:** 2-in SS
LATITUDE: 39.78113° **HAMMER TYPE:** Automatic
LONGITUDE: -81.69688° **EFFICIENCY:** 84%
STATION: N/A **OFFSET:** N/A **REVIEWED BY:** K.K./P.H.

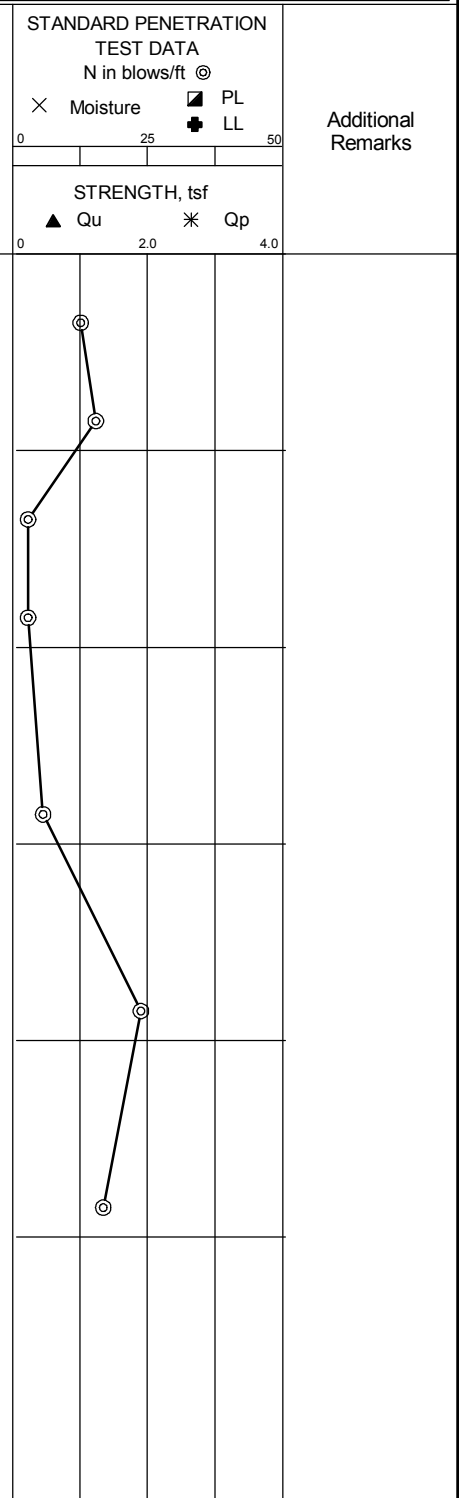
BORING B-06

Water	▽ While Drilling	- feet
	▼ Upon Completion	- feet
	▽ Caved	5.0 feet

BORING LOCATION:

REMARKS: N_{60} denotes the normalization to 60% efficiency as described in ASTM D4633. Soil Symbol in "()" = Visual Classification

Elevation (feet)	Depth (feet)	Graphic Log	Sample Type	Sample No.	Recovery (inches)	MATERIAL DESCRIPTION	USCS Classification	SPT Blows per 6-inch (SS)	Moisture, %	STRENGTH, tsf	Additional Remarks	
935	3			1		STIFF, GRAY AND BROWN, SANDY SILTY CLAY , FROM DECOMPOSED SHALE, TRACE GRAVEL, TRACE ROCK FRAGMENTS, MOIST	(CL-ML)	4-3-6 $N_{60}=13$	○			
930	7			2	▽	SOFT TO MEDIUM STIFF, GRAY AND BROWN, SANDY SILTY CLAY , FROM DECOMPOSED SHALE, TRACE GRAVEL, TRACE ROCK FRAGMENTS, MOIST TO WET	(CL-ML)	2-4-7 $N_{60}=15$	○			
925	13			3				1-1-1 $N_{60}=3$	○			
920	17			4				0-1-1 $N_{60}=3$	○			
915	23			5				1-2-2 $N_{60}=6$	○			
	27			6				MEDIUM DENSE, GRAY AND BROWN, SILTY SAND WITH GRAVEL , TRACE CLAY, TRACE ROCK FRAGMENTS, WET	(SM)	4-2-15 $N_{60}=24$	○	
	27			7				END OF BORING DUE TO AUGER REFUSAL AT 27.0 FT		10-8-4 $N_{60}=17$	○	



Professional Service Industries, Inc.
 4960 Vulcan Ave, Suite C
 Columbus, OH 43228
 Telephone: (614) 876-8000

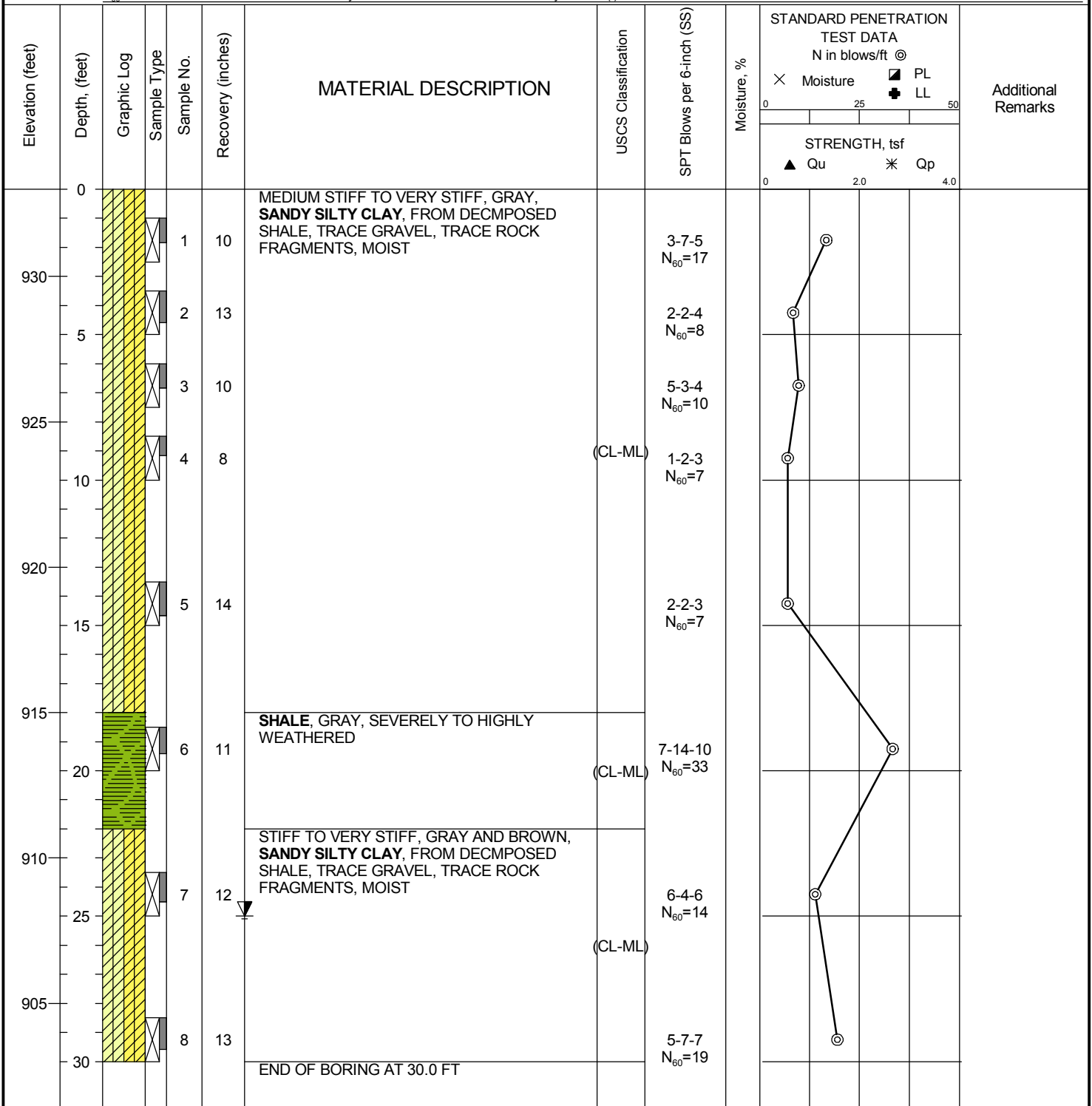
PROJECT NO.: 01022228
PROJECT: Boat Ramp Investigation
LOCATION: Dye Cemetery Road,
 Cumberland, Ohio

DATE STARTED: 11/22/22 **DRILL COMPANY:** HAD
DATE COMPLETED: 11/22/22 **DRILLER:** S.H. **LOGGED BY:** L.P.
COMPLETION DEPTH: 30.0 ft **DRILL RIG:** CME 55
BENCHMARK: N/A **DRILLING METHOD:** Hollow Stem Auger
ELEVATION: 933 ft **SAMPLING METHOD:** 2-in SS
LATITUDE: 39.77838° **HAMMER TYPE:** Automatic
LONGITUDE: -81.69085° **EFFICIENCY:** 83%
STATION: N/A **OFFSET:** N/A **REVIEWED BY:** K.K./P.H.
REMARKS: N_{60} denotes the normalization to 60% efficiency as described in ASTM D4633. Soil Symbol in "()" = Visual Classification

BORING B-07

Water
 ∇ While Drilling - feet
 ▼ Upon Completion - feet
 ∇ Caved 25.0 feet

BORING LOCATION:



Professional Service Industries, Inc.
 4960 Vulcan Ave, Suite C
 Columbus, OH 43228
 Telephone: (614) 876-8000

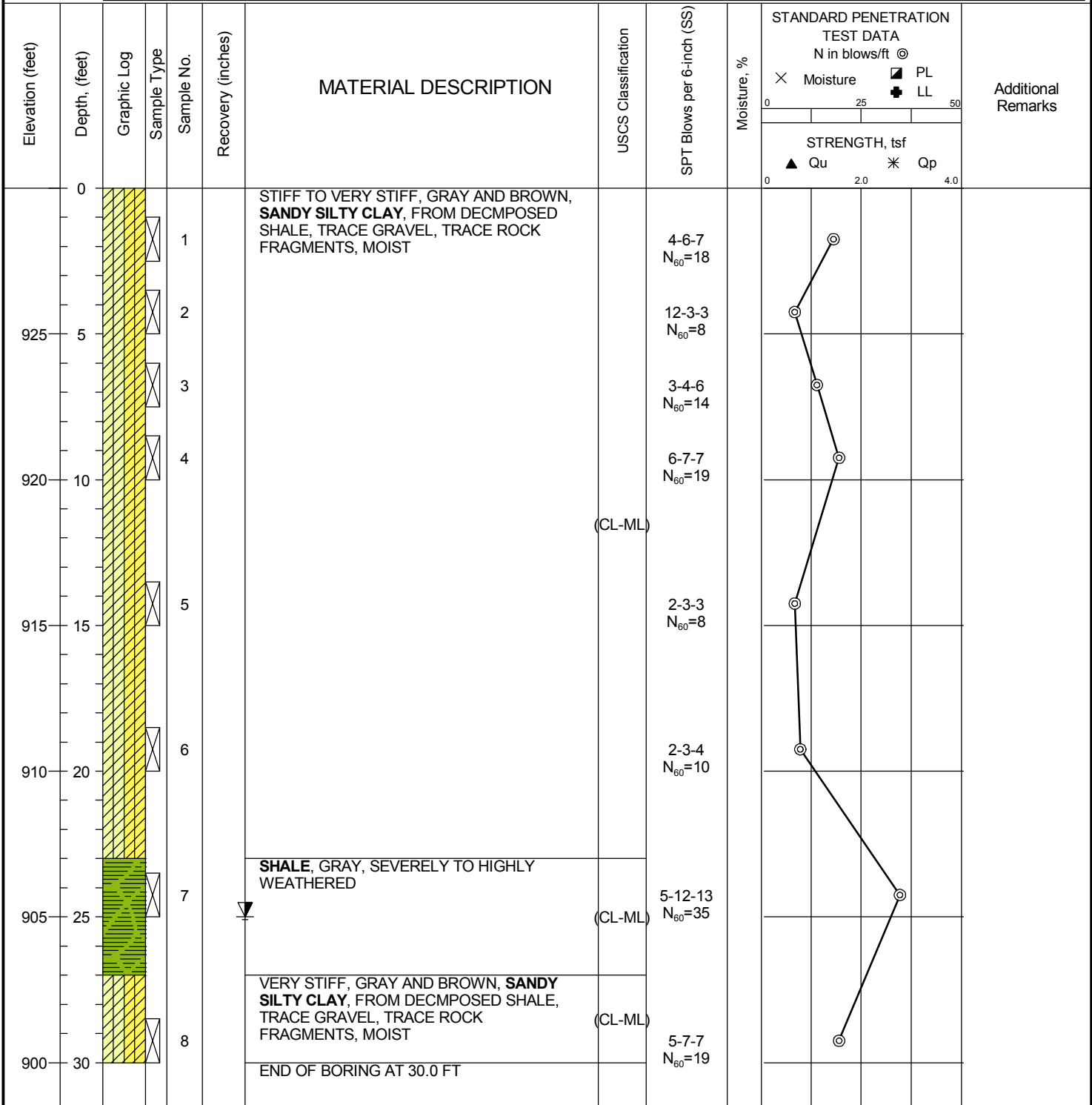
PROJECT NO.: 01022228
PROJECT: Boat Ramp Investigation
LOCATION: Dye Cemetery Road,
 Cumberland, Ohio

DATE STARTED: 11/22/22 **DRILL COMPANY:** HAD
DATE COMPLETED: 11/22/22 **DRILLER:** S.H. **LOGGED BY:** L.P.
COMPLETION DEPTH: 30.0 ft **DRILL RIG:** CME 55
BENCHMARK: N/A **DRILLING METHOD:** Hollow Stem Auger
ELEVATION: 930 ft **SAMPLING METHOD:** 2-in SS
LATITUDE: 39.77829° **HAMMER TYPE:** Automatic
LONGITUDE: -81.69085° **EFFICIENCY:** 83%
STATION: N/A **OFFSET:** N/A **REVIEWED BY:** K.K./P.H.
REMARKS: N_{60} denotes the normalization to 60% efficiency as described in ASTM D4633. Soil Symbol in "()" = Visual Classification

BORING B-08

Water	▽	While Drilling	- feet
	▼	Upon Completion	- feet
	▽	Caved	25.0 feet

BORING LOCATION:



Professional Service Industries, Inc.
 4960 Vulcan Ave, Suite C
 Columbus, OH 43228
 Telephone: (614) 876-8000

PROJECT NO.: 01022228
PROJECT: Boat Ramp Investigation
LOCATION: Dye Cemetery Road,
 Cumberland, Ohio

DATE STARTED: 11/22/22 **DRILL COMPANY:** HAD
DATE COMPLETED: 11/22/22 **DRILLER:** S.H. **LOGGED BY:** L.P.
COMPLETION DEPTH: 15.0 ft **DRILL RIG:** CME 55
BENCHMARK: N/A **DRILLING METHOD:** Hollow Stem Auger
ELEVATION: 816 ft **SAMPLING METHOD:** 2-in SS
LATITUDE: 39.76173° **HAMMER TYPE:** Automatic
LONGITUDE: -81.67144° **EFFICIENCY:** 83%
STATION: N/A **OFFSET:** N/A **REVIEWED BY:** K.K./P.H.

BORING B-09

Water
 ∇ While Drilling - feet
 ▼ Upon Completion - feet
 ▽ Caved 14.0 feet

BORING LOCATION:

REMARKS: N_{60} denotes the normalization to 60% efficiency as described in ASTM D4633. Soil Symbol in "()" = Visual Classification

Elevation (feet)	Depth (feet)	Graphic Log	Sample Type	Sample No.	Recovery (inches)	MATERIAL DESCRIPTION	USCS Classification	SPT Blows per 6-inch (SS)	Moisture, %	STANDARD PENETRATION TEST DATA N in blows/ft @	Additional Remarks
										X Moisture □ PL + LL STRENGTH, tsf ▲ Qu * Qp	
815	0			1	8	MEDIUM STIFF TO STIFF, REDDISH BROWN AND GRAY, SANDY SILTY CLAY , FROM DECOMPOSED SHALE, TRACE GRAVEL, TRACE ROCK FRAGMENTS, MOIST	(CL-ML)	2-3-3 $N_{60}=8$	○		
	5		2	10			2-2-4 $N_{60}=8$	○			
810			3	14	STIFF, GRAY AND BROWN, SANDY SILTY CLAY , FROM DECOMPOSED SHALE, TRACE GRAVEL, TRACE ROCK FRAGMENTS, MOIST		2-4-6 $N_{60}=14$	○			
	10		4	8			2-5-6 $N_{60}=15$	○			
805	15		5	2	▼ SHALE , GRAY, HIGHLY TO MODERATELY WEATHERED	(CL-ML)	50/5"			>> ○	
						END OF BORING DUE TO AUGER REFUSAL AT 15.0 FT					



Professional Service Industries, Inc.
 4960 Vulcan Ave, Suite C
 Columbus, OH 43228
 Telephone: (614) 876-8000

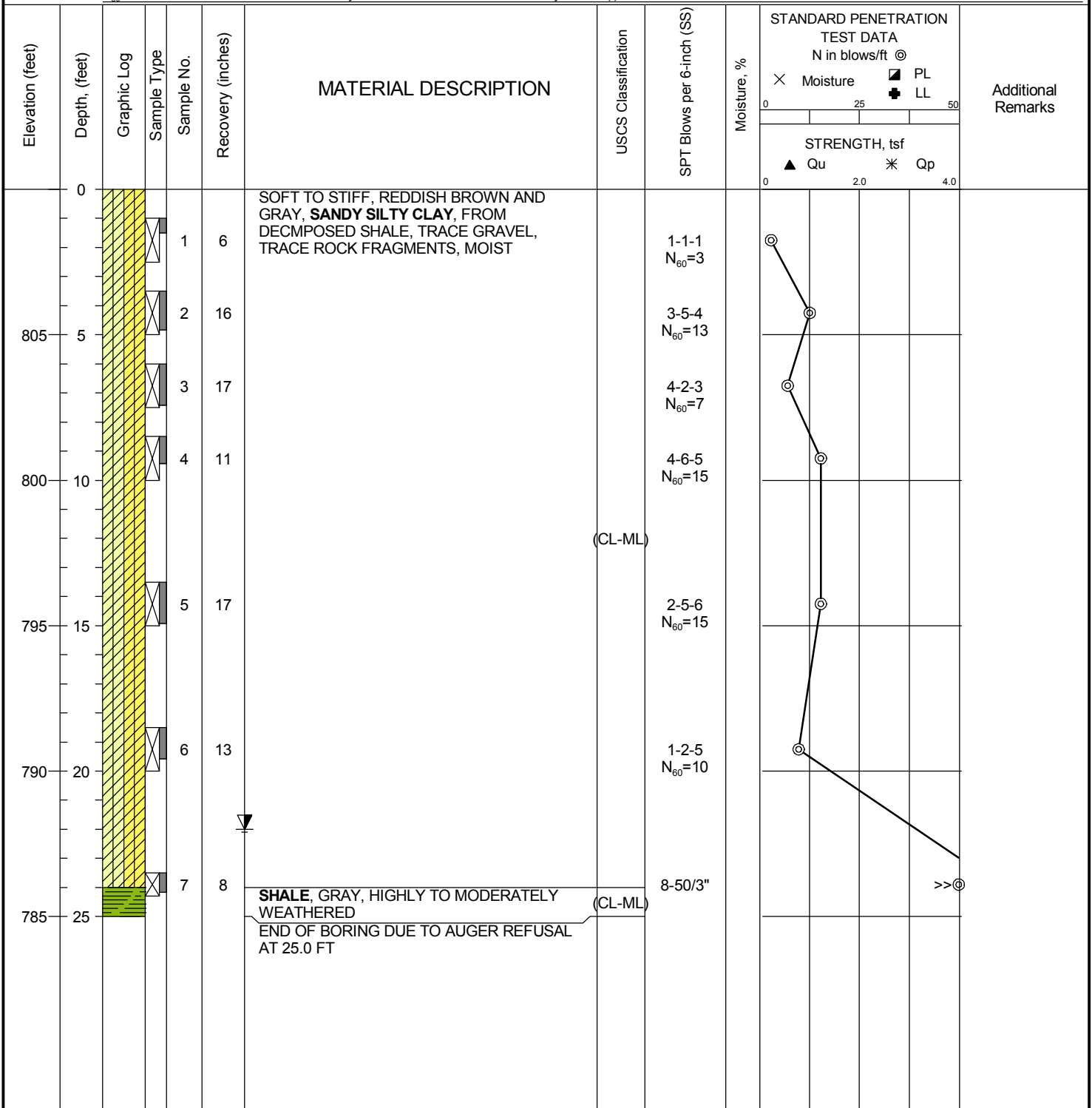
PROJECT NO.: 01022228
PROJECT: Boat Ramp Investigation
LOCATION: Dye Cemetery Road,
 Cumberland, Ohio

DATE STARTED: 11/22/22 **DRILL COMPANY:** HAD
DATE COMPLETED: 11/22/22 **DRILLER:** S.H. **LOGGED BY:** L.P.
COMPLETION DEPTH: 25.0 ft **DRILL RIG:** CME 55
BENCHMARK: N/A **DRILLING METHOD:** Hollow Stem Auger
ELEVATION: 810 ft **SAMPLING METHOD:** 2-in SS
LATITUDE: 39.76164° **HAMMER TYPE:** Automatic
LONGITUDE: -81.67146° **EFFICIENCY:** 83%
STATION: N/A **OFFSET:** N/A **REVIEWED BY:** K.K./P.H.
REMARKS: N_{60} denotes the normalization to 60% efficiency as described in ASTM D4633. Soil Symbol in "()" = Visual Classification

BORING B-10

Water
 ∇ While Drilling - feet
 ▼ Upon Completion - feet
 ▽ Caved 22.0 feet

BORING LOCATION:



Professional Service Industries, Inc.
 4960 Vulcan Ave, Suite C
 Columbus, OH 43228
 Telephone: (614) 876-8000

PROJECT NO.: 01022228
PROJECT: Boat Ramp Investigation
LOCATION: Dye Cemetery Road,
 Cumberland, Ohio