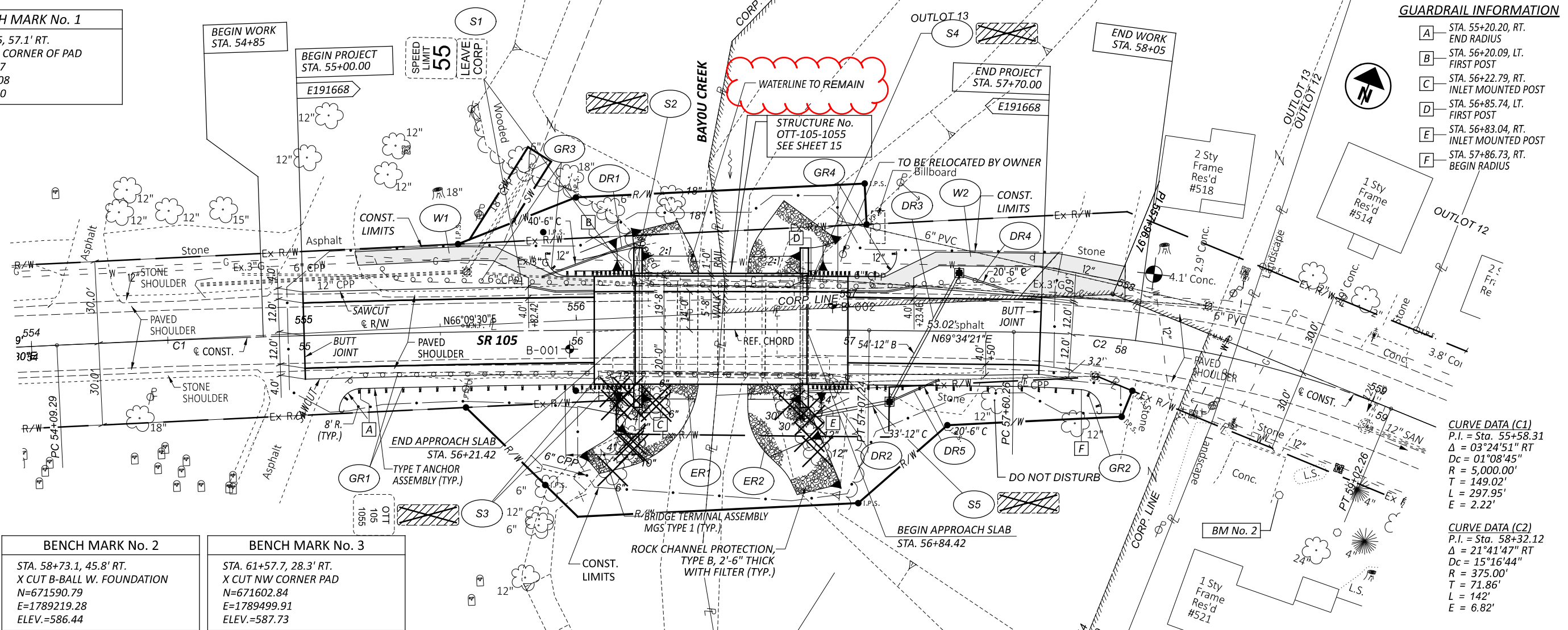


BENCH MARK No. 1
 STA. 53+42.5, 57.1' RT.
 X CUT AT W. CORNER OF PAD
 N=671403.47
 E=1788743.08
 ELEV.=586.80

BENCH MARK No. 2
 STA. 58+73.1, 45.8' RT.
 X CUT B-BALL W. FOUNDATION
 N=671590.79
 E=1789219.28
 ELEV.=586.44

BENCH MARK No. 3
 STA. 61+57.7, 28.3' RT.
 X CUT NW CORNER PAD
 N=671602.84
 E=1789499.91
 ELEV.=587.73

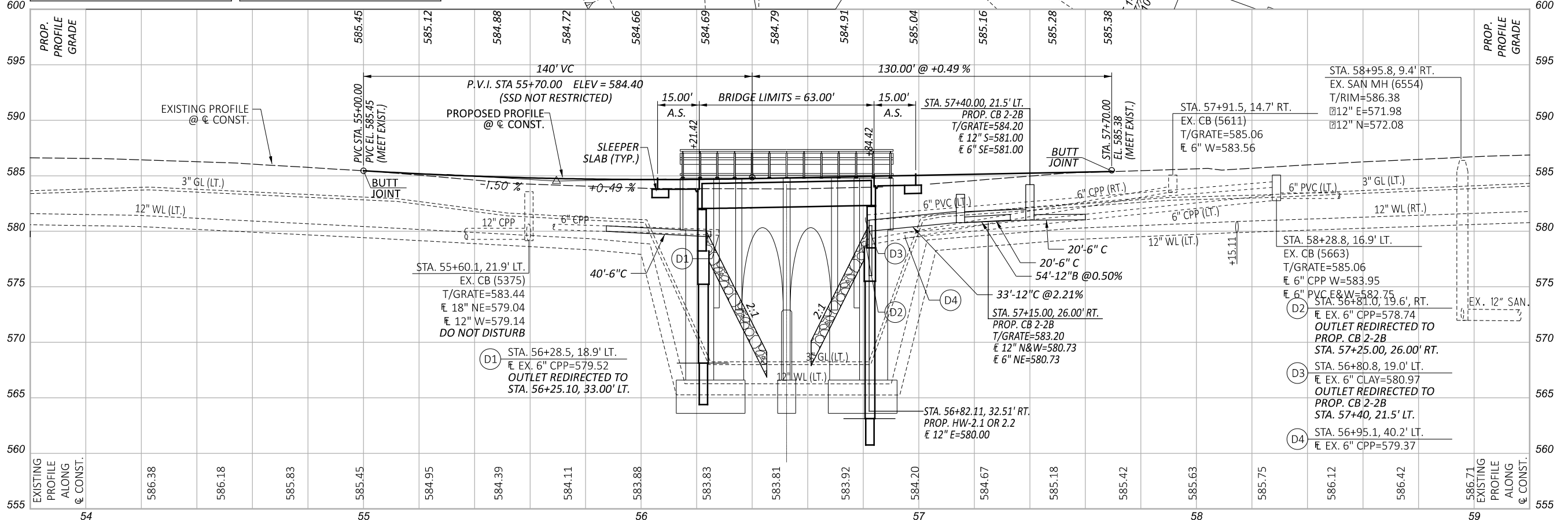
- GUARDRAIL INFORMATION**
- A STA. 55+20.20, RT. END RADIUS
 - B STA. 56+20.09, LT. FIRST POST
 - C STA. 56+22.79, RT. INLET MOUNTED POST
 - D STA. 56+85.74, LT. FIRST POST
 - E STA. 56+83.04, RT. INLET MOUNTED POST
 - F STA. 57+86.73, RT. BEGIN RADIUS



CURVE DATA (C1)
 P.I. = Sta. 55+58.31
 $\Delta = 03^{\circ}24'51''$ RT
 $D_c = 01^{\circ}08'45''$
 $R = 5,000.00'$
 $T = 149.02'$
 $L = 297.95'$
 $E = 2.22'$

CURVE DATA (C2)
 P.I. = Sta. 58+32.12
 $\Delta = 21^{\circ}41'47''$ RT
 $D_c = 15^{\circ}16'44''$
 $R = 375.00'$
 $T = 71.86'$
 $L = 142'$
 $E = 6.82'$

PLAN AND PROFILE
 STA. 54+00 TO STA. 59+00



DESIGN AGENCY

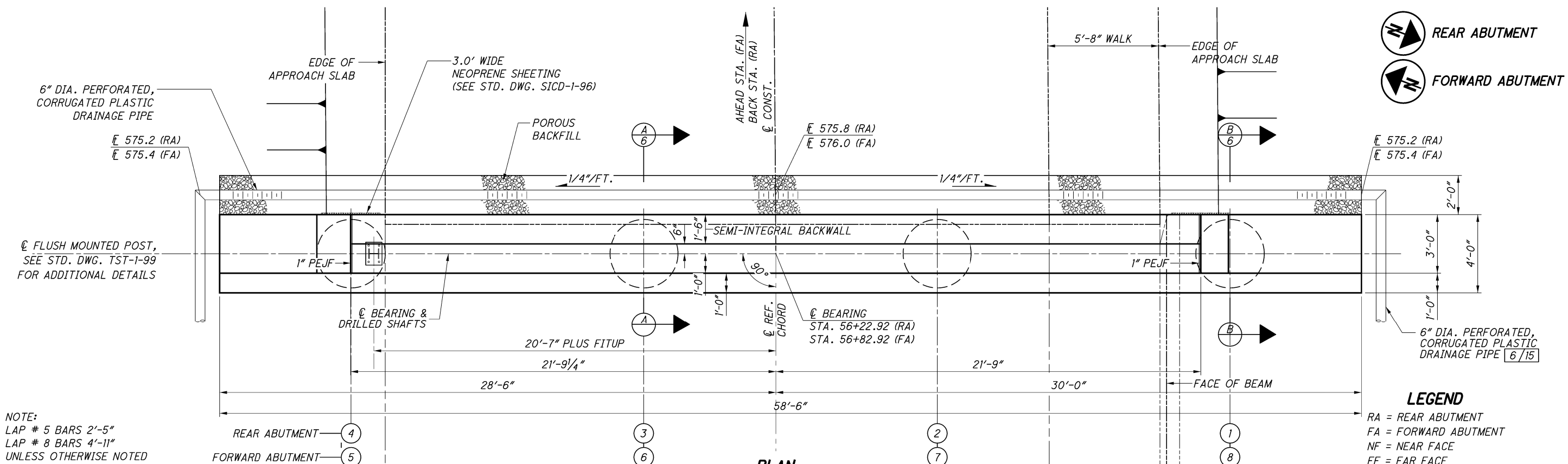
 POGGEMEYER DESIGN GROUP
 A Kleinfelder Company

DESIGNER
 HAC

REVIEWER
 JTJ 8-15-22

PROJECT ID
 102952

SHEET TOTAL
 9 49

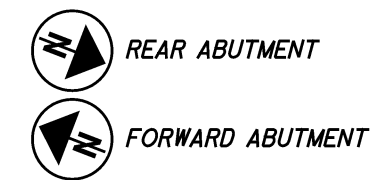


NOTE:
 LAP # 5 BARS 2'-5"
 LAP # 8 BARS 4'-11"
 UNLESS OTHERWISE NOTED

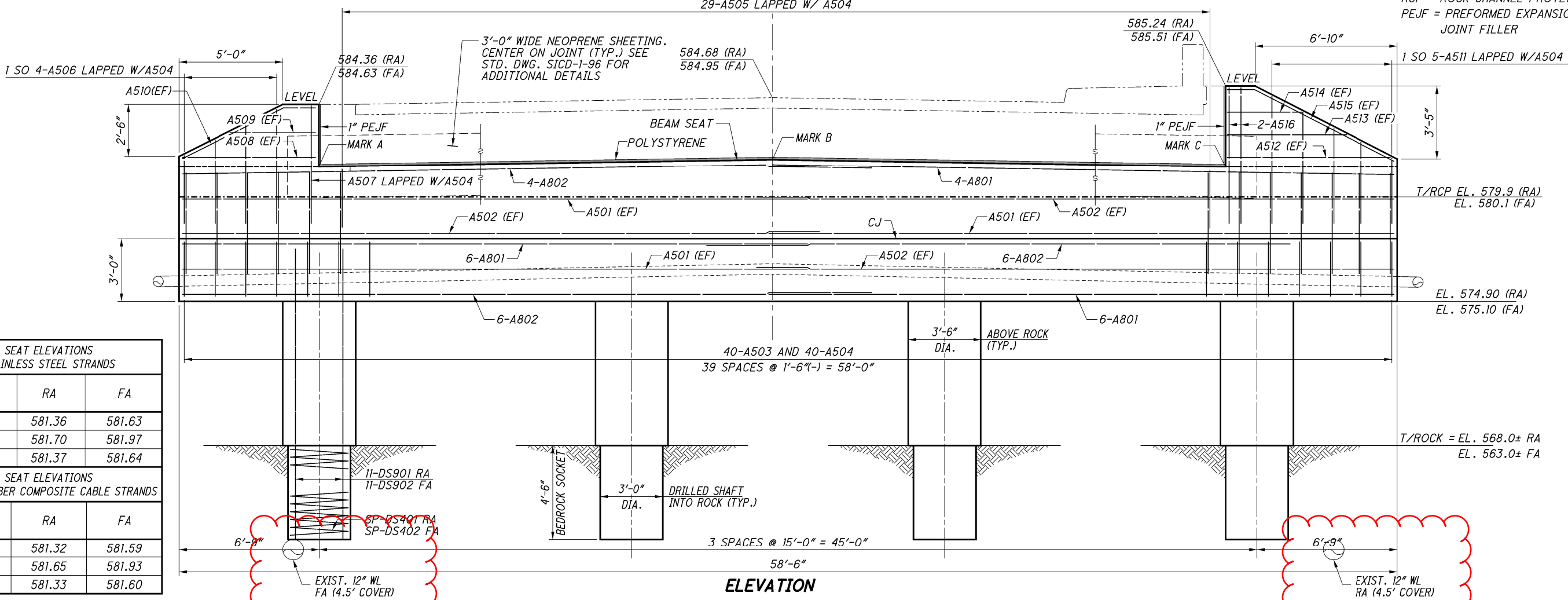
* TYPICAL, EACH END

ALL SUBSTRUCTURE BARS TO BE EPOXY COATED

PLAN
 (REAR ABUTMENT SHOWN, FORWARD ABUTMENT OPPOSITE HAND)



LEGEND
 RA = REAR ABUTMENT
 FA = FORWARD ABUTMENT
 NF = NEAR FACE
 FF = FAR FACE
 EF = EACH FACE
 CJ = CONSTRUCTION JOINT
 SO = SERIES OF
 RCP = ROCK CHANNEL PROTECTION
 PEJF = PREFORMED EXPANSION JOINT FILLER



SEAT ELEVATIONS STAINLESS STEEL STRANDS		
MARK	RA	FA
A	581.36	581.63
B	581.70	581.97
C	581.37	581.64

SEAT ELEVATIONS CARBON FIBER COMPOSITE CABLE STRANDS		
MARK	RA	FA
A	581.32	581.59
B	581.65	581.93
C	581.33	581.60

ELEVATION

ABUTMENT PLAN AND ELEVATION
 BRIDGE No. OTT-105-10.55
 OVER BAYOU CREEK

SFN	6201416
DESIGN AGENCY	
DESIGNER/CHECKER	JEF MPS
REVIEWER	JTY 05/02/22
PROJECT ID	102952
SUBSET	5 TOTAL 15
SHEET	20 TOTAL 49