

**CONTRACTOR'S EQUIPMENT - OPERATION AND STORAGE**

IN ADDITION TO THE REQUIREMENTS OF SECTION 614.03(A) OF THE CONSTRUCTION AND MATERIAL SPECIFICATIONS THE FOLLOWING SHALL APPLY. THE CONTRACTOR'S EQUIPMENT SHALL BE OPERATED IN THE DIRECTION OF TRAFFIC WHERE PRACTICAL. EXTREME CAUTION SHALL BE USED WHERE THE CONTRACTOR'S VEHICLES AND EQUIPMENT MERGE WITH THE TRAFFIC STREAM. THE CONTRACTOR'S VEHICLES AND EQUIPMENT SHALL BE EQUIPPED WITH AT LEAST ONE AMBER FLASHING LIGHT. CONSTRUCTION EQUIPMENT MAY BE PARKED IN AREA ALONG THE HIGHWAY, THIRTY FEET (30') FROM THE EDGE OF THE TRAVELED HIGHWAY UNLESS BEHIND GUARDRAIL, WHEN VARIOUS OPERATIONS ARE SCHEDULED TO CONTINUE THE NEXT WORKDAY. EQUIPMENT PARKED BEHIND THE GUARDRAIL SHALL BE AT LEAST 6 FEET FROM THE FACE OF THE GUARDRAIL. NO EQUIPMENT SHALL BE PARKED BEHIND A GUARDRAIL ATTENUATOR. ON WEEKENDS OR AT OTHER TIMES OF SUSPENSION OF WORK, EQUIPMENT SHALL BE STORED AT A STORAGE AREA REMOVED FROM THE INTERSTATE RIGHT OF WAY. NO EQUIPMENT SHALL BE PARKED IN THE MEDIAN OF THE HIGHWAY EXCEPT WHEN TRAFFIC IS MAINTAINED ON THE OUTSIDE LANES. ADEQUATE BARRICADES AND LIGHT SHALL BE PLACED ON THE PAVEMENT SIDE OF THE EQUIPMENT TO IDENTIFY THE LIMITS OF THE EQUIPMENT. ALL OTHER EQUIPMENT, INCLUDING PRIVATE VEHICLES, SHALL BE STORED AT THE APPROVED CONTACTOR'S STORAGE AREA.

**PAVEMENT MARKING**

PRIOR TO PLACEMENT OF ANY WORK ZONE PAVEMENT MARKINGS, THE CONTRACTOR SHALL COMPLETELY OBLITERATE, AS PER SPEC. 641.10, ALL EXISTING PAVEMENT MARKINGS THAT WOULD CREATE CONFUSION OR CONFLICT WITH THE WORK ZONE PAVEMENT MARKINGS. PAYMENT FOR THIS COMPLETE REMOVAL SHALL BE INCLUDED IN ITEM 614 MAINTAINING TRAFFIC, AS PER PLAN.

**ITEM 614, LAW ENFORCEMENT OFFICER (WITH PATROL CAR) FOR ASSISTANCE DURING CONSTRUCTION OPERATIONS**

USE OF LAW ENFORCEMENT OFFICERS (LEOS) BY CONTRACTORS OTHER THAN THE USES SPECIFIED BELOW WILL NOT BE PERMITTED AT PROJECT COST. LEOS SHOULD NOT BE USED WHERE THE OMUTCD INTENDS THAT FLAGGERS BE USED.

IN ADDITION TO THE REQUIREMENTS OF C&MS 614 AND THE OMUTCD, A UNIFORMED LEO WITH AN OFFICIAL PATROL CAR (CAR WITH TOP-MOUNTED EMERGENCY FLASHING LIGHTS AND COMPLETE MARKINGS OF THE APPROPRIATE LAW ENFORCEMENT AGENCY) SHALL BE PROVIDED FOR THE FOLLOWING TRAFFIC CONTROL TASKS AS APPROVED BY THE ENGINEER:

FOR LANE CLOSURES: DURING INITIAL SET-UP PERIODS, TEAR DOWN PERIODS, SUBSTANTIAL SHIFTS OF A CLOSURE POINT OR WHEN NEW LANE CLOSURE ARRANGEMENTS ARE INITIATED FOR LONG-TERM LANE CLOSURES/SHIFTS (FOR THE FIRST AND LAST DAY OF MAJOR CHANGES IN TRAFFIC CONTROL SETUP).

FOR OPERATIONS WITHOUT POSITIVE PROTECTION OCCURRING WITHIN 10 FEET OF AN OPEN TRAVELED LANE.

"WITHOUT POSITIVE PROTECTION" MEANS USE OF DRUMS, CONES, SHADOW VEHICLE, ETC. WITHOUT PROTECTION FROM PORTABLE BARRIER OR OTHER RIGID BARRIER ALONG THE WORK AREA. THIS PHRASE DOES NOT APPLY TO CASES WHERE POSITIVE PROTECTION IS REQUIRED. MOBILE OPERATIONS ARE REGARDED AS "WITHOUT POSITIVE PROTECTION". FOR WORK ZONES USING A COMBINATION OF BARRIER AND TEMPORARY TRAFFIC CONTROL DEVICES (CONES, DRUMS, ECT), THE DESIGNATION SHALL BE BASED UPON THE TYPE OF DEVICES USED IN THE AREA THAT WORKERS ARE LOCATED.

WHEN CONSTRUCTION VEHICLES ARE ENTERING/EXITING THE ZONE DIRECTLY FROM/INTO AN OPEN LANE OF TRAFFIC. IF A LANE HAS BEEN CLOSED TO PROVIDE AN ACCELERATION/ DECELERATION LANE FOR THE VEHICLE, THE LEO WILL NOT BE REQUIRED.

IN GENERAL, LEOS SHOULD BE POSITIONED IN ADVANCE OF AND ON THE SAME SIDE AS THE LANE RESTRICTION (OR AT THE POINT OF ROAD CLOSURE).

LEOS SHOULD NOT FORGO THEIR TRAFFIC CONTROL RESPONSIBILITIES TO APPREHEND MOTORISTS FOR ROUTINE TRAFFIC VIOLATIONS. HOWEVER, IF A MOTORIST'S ACTIONS ARE CONSIDERED TO BE RECKLESS, THEN PURSUIT OF THE MOTORIST IS APPROPRIATE.

THE LEOS WORK AT THE DIRECTION OF THE CONTRACTOR. THE CONTRACTOR IS RESPONSIBLE FOR SECURING THE SERVICES OF THE LEOS WITH THE APPROPRIATE AGENCIES AND COMMUNICATING THE INTENTIONS OF THE PLANS WITH RESPECT TO DUTIES OF THE LEOS. THE ENGINEER SHALL HAVE FINAL CONTROL OVER THE LEOS' DUTIES AND PLACEMENT, AND WILL RESOLVE ANY ISSUES THAT MAY ARISE BETWEEN THE TWO PARTIES.

ENSURE PROVIDED LEOS HAVE BEEN TRAINED APPROPRIATE TO THE JOB DECISIONS THEY ARE REQUIRED TO MAKE WHILE ON THE PROJECT, IN ACCORDANCE WITH C&MS 614.03.

**ITEM 614, LAW ENFORCEMENT OFFICER (WITH PATROL CAR) FOR ASSISTANCE DURING CONSTRUCTION OPERATIONS (CONTIN.)**

THE LEO SHALL REPORT IN TO THE CONTRACTOR PRIOR TO THE START OF THE SHIFT, IN ORDER TO RECEIVE INSTRUCTIONS REGARDING SPECIFIC WORK ASSIGNMENTS DURING HIS/HER SHIFT. THE LEO IS EXPECTED TO STAY AT THE PROJECT SITE FOR THE ENTIRE DURATION OF HIS/HER SHIFT. THE LEO SHALL REPORT TO THE CONTRACTOR AT THE END OF HIS/HER SHIFT. SHOULD IT BE NECESSARY TO LEAVE THE PROJECT SITE, THE LEO SHALL NOTIFY THE ENGINEER. THE CONTRACTOR SHALL PROVIDE THE LEO WITH A TWO-WAY COMMUNICATION DEVICE THAT SHALL BE RETURNED TO THE CONTRACTOR AT THE END OF HIS/HER SHIFT.

LEOS (WITH PATROL CAR) REQUIRED BY THE TRAFFIC MAINTENANCE TASKS ABOVE SHALL BE PAID FOR ON A UNIT PRICE (HOURLY) BASIS UNDER ITEM 614, LAW ENFORCEMENT OFFICER (WITH PATROL CAR) FOR ASSISTANCE. THE FOLLOWING ESTIMATED QUANTITIES HAVE BEEN CARRIED TO THE GENERAL SUMMARY.

ITEM 614, LAW ENFORCEMENT OFFICER WITH PATROL CAR FOR ASSISTANCE 300 HOURS

THE HOURS PAID SHALL INCLUDE ANY MINIMUM SHOW-UP TIME REQUIRED BY THE LAW ENFORCEMENT AGENCY INVOLVED.

ANY ADDITIONAL COSTS (ADMINISTRATIVE OR OTHERWISE) INCURRED BY THE CONTRACTOR TO OBTAIN THE SERVICES OF A LEO ARE INCLUDED WITH THE BID UNIT PRICE FOR ITEM 614, LAW ENFORCEMENT OFFICER WITH PATROL CAR FOR ASSISTANCE.

**COORDINATION OF CONTRACTORS**

SINCE THE MAINTENANCE OF TRAFFIC AND WORK ON THIS PROJECT MAY OVERLAP OTHER PROJECTS, IT IS ESSENTIAL THAT EACH CONTRACTOR CONDUCT THEIR WORK AND COOPERATE WITH EACH OTHER IN SUCH A MANNER AS NOT HINDER THE PROGRESS OR COMPLETION OF THE WORK BEING PERFORMED BY THE OTHER CONTRACTOR.

**ALTERNATE METHODS**

IF THE CONTRACTOR SO ELECTS, THEY MAY SUBMIT ALTERNATE METHODS FOR MAINTENANCE OF TRAFFIC PROVIDED THE INTENT OF THE ABOVE PROVISIONS ARE FOLLOWED AND NO ADDITIONAL INCONVENIENCE TO THE TRAVELING PUBLIC RESULTS THERE FROM. NO ALTERNATE PLAN SHALL BE PLACED INTO EFFECT UNTIL APPROVAL HAS BEEN GRANTED, IN WRITING, BY THE DISTRICT CONSTRUCTION ENGINEER.

**FLOODLIGHTING**

FLOODLIGHTING OF THE WORK SITE FOR OPERATIONS CONDUCTED DURING NIGHTTIME PERIODS SHALL BE ACCOMPLISHED SO THAT THE LIGHTS DO NOT CAUSE GLARE TO THE DRIVERS ON THE ROADWAY. TO ENSURE THE ADEQUACY OF THE FLOODLIGHT PLACEMENT, THE CONTRACTOR AND THE ENGINEER SHALL DRIVE THROUGH THE WORK SITE EACH NIGHT WHEN THE LIGHTING IS IN PLACE AND OPERATIVE PRIOR TO COMMENCING ANY WORK. IF GLARE IS DETECTED, THE LIGHT PLACEMENT AND SHEILDING SHALL BE ADJUSTED TO THE SATISFACTION OF THE ENGINEER BEFORE WORK PROCEEDS.

PAYMENT FOR ALL LABOR, EQUIPMENT AND MATERIALS SHALL BE INCLUDED IN THE LUMP SUM CONTRACT PRICE FOR ITEM 614, MAINTAINING TRAFFIC, AS PER PLAN.

**WORK ZONE INCREASED PENALTIES SIGN (R11-H5A)**

R11-H5A-48 SIGNS SHALL BE FURNISHED, ERECTED, AND MAINTAINED IN GOOD CONDITION AND/OR REPLACED AS NECESSARY AND SUBSEQUENTLY REMOVED BY THE CONTRACTOR. SIGNS SHALL BE MOUNTED AT THE APPROPRIATE OFFSETS AND ELEVATIONS AS PRESCRIBED BY THE OHIO MANUAL OF UNIFORM TRAFFIC CONTROL DEVICES. THEY SHALL BE MAINTAINED ON SUPPORTS MEETING CURRENT SAFETY CRITERIA.

THE SIGNS MAY BE ERECTED OR UNCOVERED NO MORE THAN FOUR HOURS BEFORE THE ACTUAL START OF WORK. THE SIGNS SHALL BE REMOVED OR COVERED NO LATER THAN FOUR HOURS FOLLOWING RESTORATION OF ALL LANES TO TRAFFIC WITH NO RESTRICTIONS, OR SOONER AS DIRECTED BY THE ENGINEER. TEMPORARY SIGN COVERING AND UNCOVERING DUE TO TEMPORARY LANE RESTORATIONS SHALL BE GUIDED BY THE FOUR-HOUR LIMITATIONS STATED ABOVE. SUCH LANE RESTORATIONS SHOULD BE EXPECTED TO REMAIN IN EFFECT FOR 30 OR MORE CONSECUTIVE CALENDAR DAYS, SUCH AS DURING WINTER SHUT-DOWNS.

THE SIGNS ON THE MAINLINE SHALL BE DUAL MOUNTED UNLESS NOT PHYSICALLY POSSIBLE. THE FIRST SIGN SHALL BE PLACED BETWEEN THE ROAD WORK AHEAD (W20-1) SIGN AND THE NEXT SIGN IN THE SEQUENCE. SIGNS SHALL BE ERECTED ON EACH ENTRANCE RAMP AND EVERY 2 MILES THROUGH THE CONSTRUCTION WORK LIMITS. SIGNS ON THE MAINLINE SHALL BE R11-H5A-48. SIGNS USED ON THE RAMPS SHALL BE R11-H5A-24. R11-H5A-24 SIGNS MAY BE USED IN THE MEDIAN IN LIEU OF R11-H5A-48 SIGNS IF IT IS NOT PHYSICALLY POSSIBLE TO PROVIDE R11-H5A-48 SIGNS IN THE MEDIAN.

THE R11-H5A-48 SIGNS SHALL BE MOUNTED ON 2 NO. 3 POSTS WHEN LOCATED WITHIN CLEAR ZONES.

THE CONTRACTOR MAY USE SIGNS AND SUPPORTS IN USED, BUT GOOD, CONDITION PROVIDED THE SIGNS MEET CURRENT ODOT SPECIFICATIONS. SIGN FACES SHALL BE RETROREFLECTORIZED WITH TYPE G SHEETING COMPLYING WITH THE REQUIREMENTS OF C&MS 730.19.

WORK ZONE INCREASED PENALTIES SIGNS AND SUPPORTS WILL BE MEASURED AS THE NUMBER OF SIGN INSTALLATIONS, INCLUDING THE SIGN AND NECESSARY SUPPORTS. IF A SIGN AND SUPPORT COMBINATION IS REMOVED AND REERECTED AT ANOTHER LOCATION AS DIRECTED BY THE ENGINEER, IT SHALL BE CONSIDERED ANOTHER UNIT.

PAYMENT FOR ACCEPTED QUANTITIES, COMPLETE, IN PLACE WILL BE MADE AT THE CONTRACT UNIT PRICE. PAYMENT SHALL BE FULL COMPENSATION FOR ALL MATERIALS, LABOR, INCIDENTALS AND EQUIPMENT FOR FURNISHING, ERECTING, MAINTAINING, COVERING DURING SUSPENSION OF WORK, AND REMOVAL OF THE SIGN AND SUPPORT.

ITEM 614, WORK ZONE INCREASED PENALTIES SIGN 54 EACH

DESIGN AGENCY



DESIGNER

GLI

REVIEWER

EJS 12-10-21

PROJECT ID

102773

SHEET TOTAL

5 21

**WORK ZONE SPEED ZONES (WZSZS)**

THE FOLLOWING WORK ZONE SPEED ZONE (WZSZ) SPEED LIMIT REVISION(S) HAVE BEEN APPROVED FOR USE ON THIS PROJECT WHEN WORK ZONE CONDITIONS AND FACTORS ARE MET AS DESCRIBED BELOW:

WZSZ REVISION NUMBER(S)	C-R-S	DIRECTION(S)
WZ-10146	PAU/DEF-24-0.00/0.00	EB & WB

POTENTIAL WZSZ LOCATIONS SHALL HAVE AN ORIGINAL (PRE-CONSTRUCTION) POSTED SPEED LIMIT OF 55 MPH OR GREATER, A QUALIFYING WORK ZONE CONDITION OF AT LEAST 0.5 MILE IN LENGTH, AN EXPECTED WORK DURATION OF AT LEAST THREE HOURS, AND A WORK ZONE CONDITION IN PLACE THAT REDUCES THE EXISTING FUNCTIONALITY OF THE TRAVEL LANES OR SHOULDERS (I.E., LANE CLOSURE, LANE SHIFT, CROSSOVER, CONTRAFLOW AND/OR SHOULDER CLOSURE). THE LENGTH OF THE WORK ZONE CONDITION IS MEASURED FROM THE BEGINNING OF THE TAPER FOR THE SUBJECT WORK ZONE CONDITION IMPACTING THE TRAVEL LANES AND/OR SHOULDER TO THE END OF THE DOWNSTREAM TAPER, WHERE DRIVERS ARE RETURNED TO TYPICAL ALIGNMENT. AN EXPECTED WORK DURATION OF AT LEAST THREE HOURS IS REQUIRED TO BALANCE THE ADDITIONAL EXPOSURE CREATED BY INSTALLING AND REMOVING WZSZ SIGNING WITH THE TIME NEEDED TO COMPLETE THE WORK.

IF THE WORK ZONE MEETS THESE MINIMUM CRITERIA, IT SHALL BE ANALYZED FURTHER USING TABLE 1 BELOW TO DETERMINE IF AND WHEN IT QUALIFIES FOR A SPEED LIMIT REDUCTION. DEPENDING ON THE ORIGINAL POSTED SPEED LIMIT, THE TYPE OF TEMPORARY TRAFFIC CONTROL USED, AND WHETHER OR NOT WORKERS ARE PRESENT, A WARRANTED WZSZ WILL VARY IN THE APPROVED SPEED LIMIT TO BE POSTED OVER TIME.

C&MS ITEM 614, PARAGRAPH 614.02(B), INDICATES THAT TWO DIRECTIONS OF A DIVIDED HIGHWAY ARE CONSIDERED SEPARATE HIGHWAY SECTIONS. THEREFORE, IF THE WORK ON A MULTI-LANE DIVIDED HIGHWAY IS LIMITED TO ONLY ONE DIRECTION, A SPEED LIMIT REDUCTION IN THE DIRECTION OF THE WORK DOES NOT AUTOMATICALLY CONSTITUTE A SPEED LIMIT REDUCTION IN THE OPPOSITE DIRECTION. EACH DIRECTION SHALL BE ANALYZED INDEPENDENTLY FROM EACH OTHER.

ALL WZSZS FLUCTUATE BETWEEN TWO APPROVED REDUCED SPEED LIMITS OR BETWEEN AN APPROVED REDUCED SPEED LIMIT AND THE ORIGINAL POSTED SPEED LIMIT. ONLY ONE OF TWO SIGNING STRATEGIES SHALL BE USED TO IMPLEMENT A WZSZ.

WZSZS USING DSL SIGN ASSEMBLIES SHALL BE IN ACCORDANCE WITH THIS NOTE, APPROVED LIST, SUPPLEMENTAL SPECIFICATIONS (SS) 808 AND 908, AND TRAFFIC SCD MT-104.10.

WZSZS USING TEMPORARY FLATSHEET SPEED LIMIT SIGNS SHALL BE IN ACCORDANCE WITH THIS NOTE AND SCD MT-104.10. ADDITIONALLY PAYMENT MAY BE REMOVED, OR A DISINCENTIVE APPLIED, FOR WZSZS USING TEMPORARY FLATSHEET SPEED LIMIT SIGNS THE SAME AS DESCRIBED IN THE MOST RECENT PUBLICATION OF SS 808 IN REGARDS TO WZSZS USING DSL SIGN ASSEMBLIES (SEE SS 808.06 PARAGRAPHS 4 THROUGH 7, INCLUDING TABLE 1).

ONLY ONE WARRANTED SPEED LIMIT APPLIES AT ANY ONE TIME; SPEED LIMIT REDUCTIONS ARE NOT CUMULATIVE. WZSZS SHALL NOT BE USED FOR MOVING/MOBILE ACTIVITIES, AS DEFINED IN OMUTCD PART 6.

WHEN LOOKING UP THE WARRANTED WORK ZONE SPEED LIMITS, ALWAYS USE THE ORIGINAL, PRECONSTRUCTION, POSTED SPEED LIMIT. DO NOT USE A PRIOR OR CURRENT WORK ZONE SPEED LIMIT AS A LOOK UP VALUE IN THE TABLE. POSITIVE PROTECTION IS GENERALLY REGARDED AS PORTABLE BARRIER OR OTHER RIGID BARRIER IN USE ALONG THE WORK AREA WITHIN THE SUBJECT WARRANTED WORK ZONE CONDITION. WITHOUT POSITIVE PROTECTION IS GENERALLY REGARDED AS USING DRUMS, CONES, SHADOW VEHICLE, ETC., ALONG THE WORK AREA WITHIN THE SUBJECT WARRANTED WORK ZONE CONDITION. WORKERS ARE CONSIDERED AS BEING PRESENT WHEN ON-SITE, WORKING WITHIN THE SUBJECT WARRANTED WORK ZONE CONDITION. WHEN THE WORK ZONE CONDITION REDUCING THE EXISTING FUNCTIONALITY OF THE TRAVEL LANES OR SHOULDERS IS REMOVED, THE SPEED LIMIT DISPLAYED SHALL RETURN TO THE ORIGINAL POSTED SPEED LIMIT.

TABLE 1: WARRANTED WORK ZONE SPEED LIMITS (MPH) FOR WORK ZONES ON HIGH-SPEED (55 MPH OR GREATER) MULTI-LANE HIGHWAYS

ORIGINAL POSTED SPEED LIMIT	WITH POSITIVE PROTECTION		WITHOUT POSITIVE PROTECTION	
	WORKERS PRESENT	WORKERS NOT PRESENT	WORKERS PRESENT	WORKERS NOT PRESENT
70	60	65	55	65
65	55	60	50	60
60	55	60	50	60
55	50	55	45	55

THE FOLLOWING ESTIMATED QUANTITY HAS BEEN CARRIED TO THE GENERAL SUMMARY.

ITEM 808, DIGITAL SPEED LIMIT (DSL) SIGN ASSEMBLY 392 SIGN MONTHS ASSUMING 98 DSL SIGN ASSEMBLY(IES) FOR 4 MONTH(S)

**ITEM 614, MAINTAINING TRAFFIC**

THE CONTRACTOR SHALL MAINTAIN AT LEAST ONE ELEVEN (11) FOOT LANE OF TRAFFIC IN EACH DIRECTION AT ALL TIMES ON MAINLINE U.S. 24 IN ACCORDANCE WITH THE REQUIREMENTS OF SPEC. 614 AND THESE MAINTENANCE OF TRAFFIC NOTES. ALL SIDE ROADS ENTERING U.S. 24 AT AT-GRADE INTERSECTIONS SHALL REMAIN OPEN AT ALL TIMES. IT IS THE RESPONSIBILITY OF THE THE CONTRACTOR TO ORGANIZE THEIR WORK IN SUCH A MANNER TO PROVIDE THE MOST SAFETY WITH THE LEAST INCONVENIENCE TO THE TRAVELING PUBLIC.

LENGTH AND DURATION OF LANE CLOSURES AND RESTRICTIONS ON U.S. 24 SHALL BE AT THE APPROVAL OF THE ENGINEER. IT IS THE INTENT TO MINIMIZE THE IMPACT OF THE TRAVELING PUBLIC. LANE CLOSURES OR RESTRICTIONS OVER SEGMENTS OF THE PROJECT IN WHICH NO WORK IS ANTICIPATED WITHIN A REASONABLE TIME FRAME, AS DETERMINED BY THE ENGINEER, SHALL NOT BE PERMITTED. A CLOSED LANE WITH NO FURTHER PATCHING REQUIRED AND NO PAVING/PLANING OPERATIONS SCHEDULED WITHIN FOUR (4) CALENDAR DAYS SHALL BE OPENED FOR THE CONVENIENCE OF THE TRAVELING PUBLIC. THE LEVEL OF UTILIZATION OF MAINTENANCE OF TRAFFIC DEVICES SHALL BE COMMENSURATED WITHIN THE WORK IN PROGRESS.

THE RAMPS AT S.R. 49, U.S. 127, BALTIMORE ST., S.R. 15 AND S.R. 66 AND THE MAINLINE AT U.S. 127, S.R. 15 AND S.R. 66 ARE EACH PERMITTED TO BE CLOSED FOR A DURATION NOT TO EXCEED SEVEN (7) CONSECUTIVE CALENDAR DAY IN ORDER TO COMPLETE CONCRETE REPAIR AND REPLACEMENT WORK. RAMPS CANNOT BE CLOSED COCURRENTLY. THE CONTRACTOR SHALL NOT CLOSE TWO ADJACENT INTERCHANGES AT THE SAME TIME DUE TO DETOUR ROUTE. TRAFFIC SHALL BE DETOURED AS SHOWN ON SHEETS 7 THRU 18. A DISINCENTIVE IN THE AMOUNT SHOWN BELOW FOR EACH CALENDAR DAY A RAMP REMAINS CLOSED TO TRAFFIC BEYOND THE SPECIFIED LIMITS.

RAMPS AND MAINLINE SECTIONS	DISINCENTIVE
SR 49 INTERCHANGE WITH US 24	\$5,000/DAY
US 127 INTERCHANGE WITH US 24	\$8,000/DAY
US 127 MAINLINE	\$10,000/DAY
BALTIMORE ST. INTERCHANGE WITH US 24	\$10,000/DAY
SR 15 INTERCHANGE WITH US 24	\$7,000/DAY
SR 15 MAINLINE	\$10,000/DAY
SR 66 INTERCHANGE WITH US 24	\$7,500/DAY
SR 66 MAINLINE	\$10,000/DAY

THE RAMP CLOSURES SHALL BE ESTABLISHED, MAINTAINED AND SUBSEQUENTLY REMOVED BY THE CONTRACTOR AS PER STANDARD CONSTRUCTION DRAWINGS MT 98.29 AND MT 98.30. THE DETOUR SIGNING SHALL BE ESTABLISHED, MAINTAINED AND SUBSEQUENTLY REMOVED BY THE CONTRACTOR AS SHOWN IN THE PLANS ON SHEETS 7-18. PAYMENT FOR ALL LABOR, EQUIPMENT, AND MATERIALS SHALL BE INCLUDED IN THE LUMP SUM FOR ITEM 614 MAINTAINING TRAFFIC.

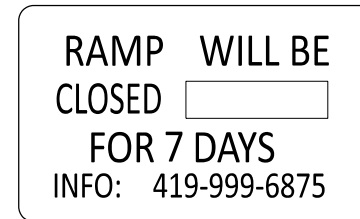
NOTICE OF CLOSURE SIGNS (W20-H13), SHALL BE ERECTED BY THE CONTRACTOR PRIOR TO THE SCHEDULED ENTRANCE RAMP CLOSURES. PORTABLE CHANGEABLE MESSAGE SIGNS, AS DETAILED ON SHEET 5, SHALL BE PROVIDED BY THE CONTRACTOR PRIOR TO THE SCHEDULED EXIT RAMP CLOSURES. THE NOTICE OF CLOSURE SIGNS AND THE PORTABLE CHANGEABLE MESSAGE SIGNS SHALL BE PLACED IN ACCORDANCE WITH THE NOTICE OF CLOSURE TIME TABLE BELOW.

THE SIGNS SHALL BE ERECTED ON THE RIGHT-HAND SIDE OF THE ROAD/RAMP FACING TRAFFIC. THEY SHALL BE PLACED SO AS NOT TO INTERFERE WITH THE VISIBILITY OF ANY OTHER TRAFFIC CONTROL SIGNS. ON ROADWAYS, THEY SHOULD BE ERECTED AT OR NEAR THE POINT OF CLOSURE. THE SIGNS MAY BE ERECTED ANYWHERE ON RAMPS AS LONG AS THEY ARE VISIBLE TO THE MOTORISTS USING THE RAMP. ON ENTRANCE RAMPS, THE SIGN SHALL BE ERECTED WELL IN ADVANCE OF THE MERGE AREA TO AVOID DISTRACTING MOTORISTS.

NOTICE OF CLOSURE SIGN TIME TABLE

ITEM	DURATION OF CLOSURE	SIGN DISPLAYED TO PUBLIC
	> = 2 WEEKS	14 CALENDAR DAYS PRIOR TO CLOSURE
ROAD CLOSURE	> = 12 HOURS & < 2 WEEKS	7 CALENDAR DAYS PRIOR TO CLOSURE
	< 12 HOURS	2 BUSINESS DAYS PRIOR TO CLOSURE

THE SIGN SHALL DISPLAY THE DATE OF THE CLOSURE IN MM-DD FORMAT AND THE NUMBER OF DAYS OF THE CLOSURE. THE LAST LINE OF THE W20-H13 SIGN LISTS A PHONE NUMBER WHICH A MOTORIST MAY CALL FOR ADDITIONAL INFORMATION.



W20-H13-60

NOTE: THE CONTRACTOR IS TO SUPPLY THE DATE

THE CONTRACTOR SHALL BE RESPONSIBLE FOR ERECTING AND MAINTAINING SAFE AND EFFECTIVE TRAFFIC CONTROL 24 HOURS A DAY FOR THE DURATION OF THIS PROJECT. ALL TRAFFIC CONTROL DEVICES SHALL BE FURNISHED, ERECTED, AND MAINTAINED, AND REMOVED BY THE CONTRACTOR. THIS CONSISTS OF NOTIFYING THE OHIO STATE PATROL AFTER ENCOUNTERING ANY ACCIDENTS OR DISABLED VEHICLES OR OBJECTS HINDERING THE FLOW OF TRAFFIC.

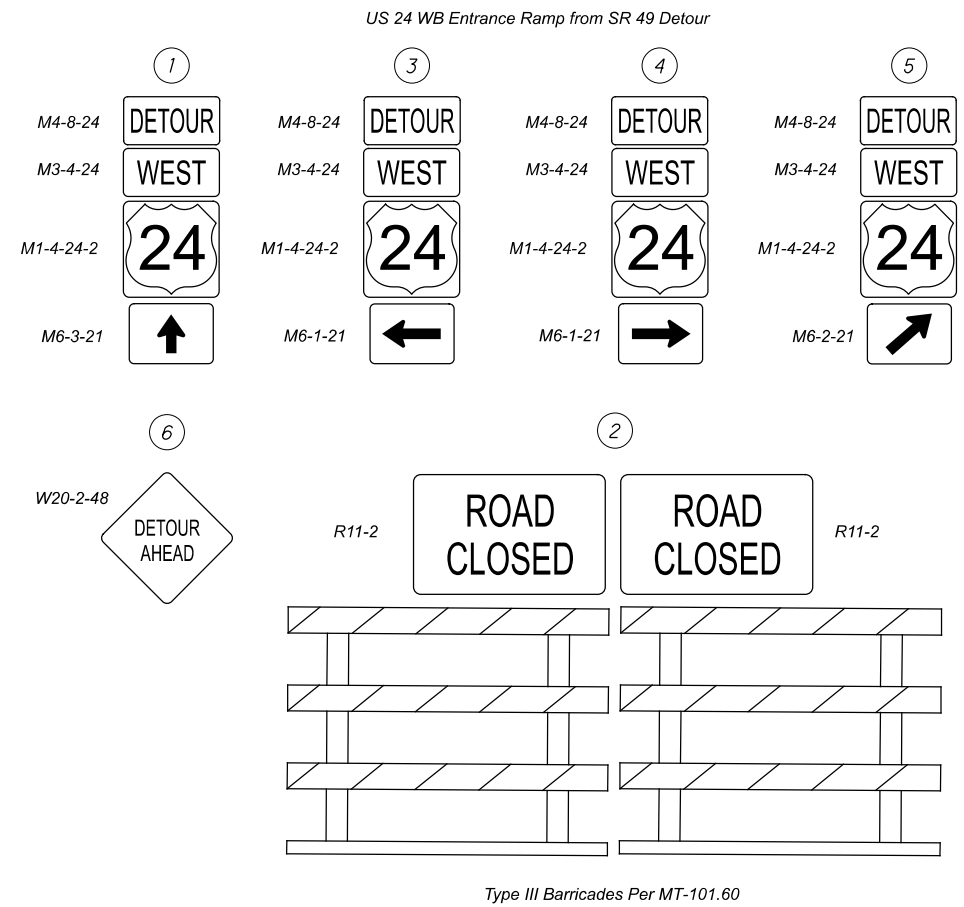
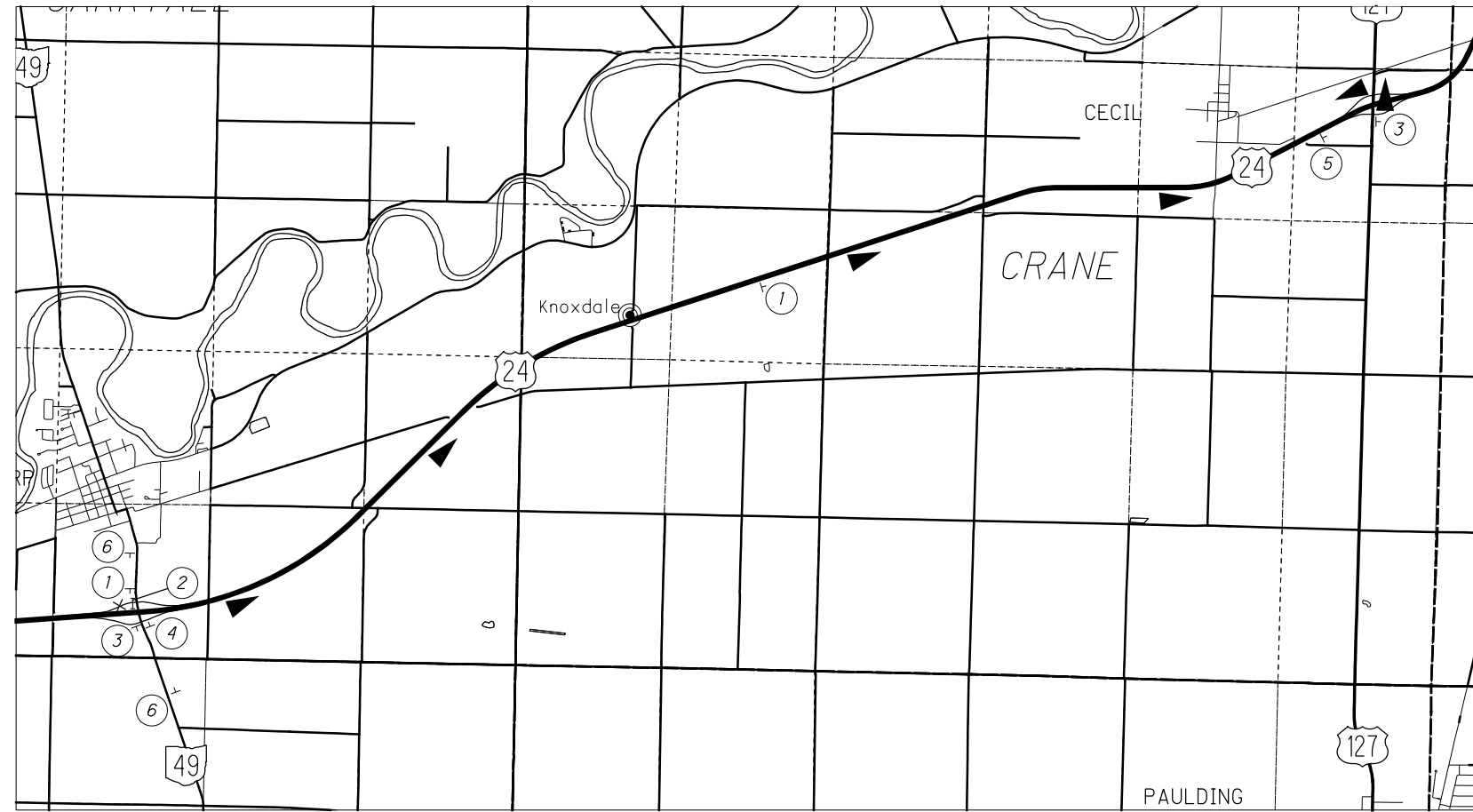
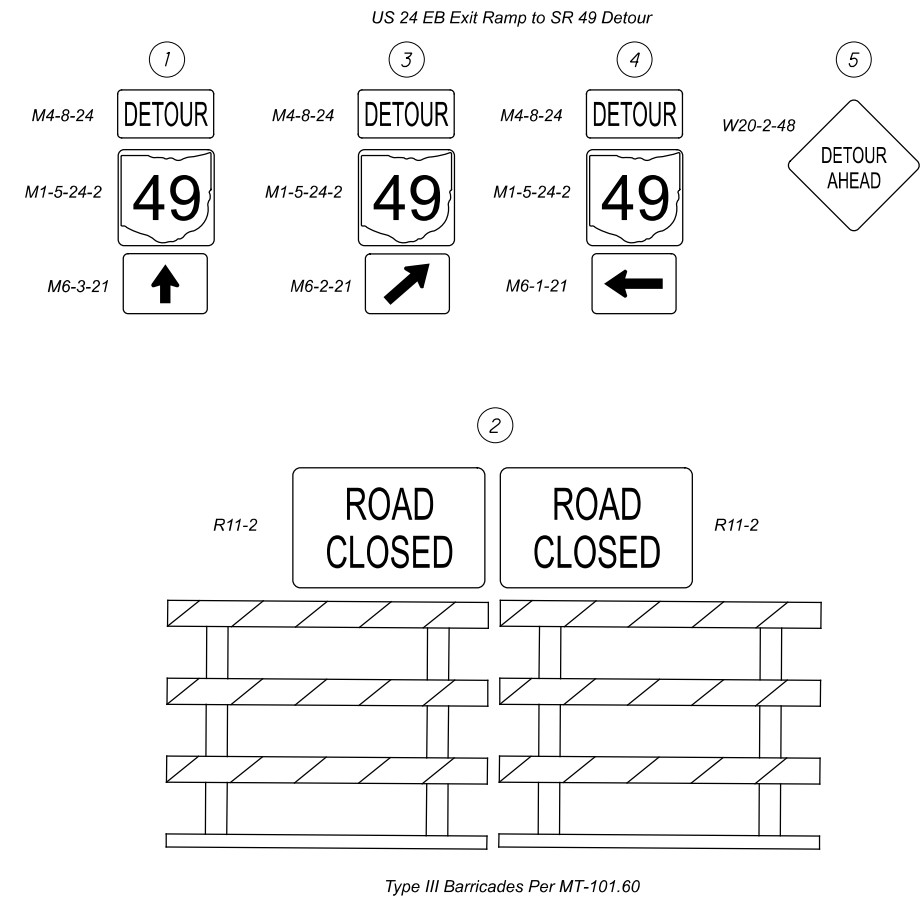
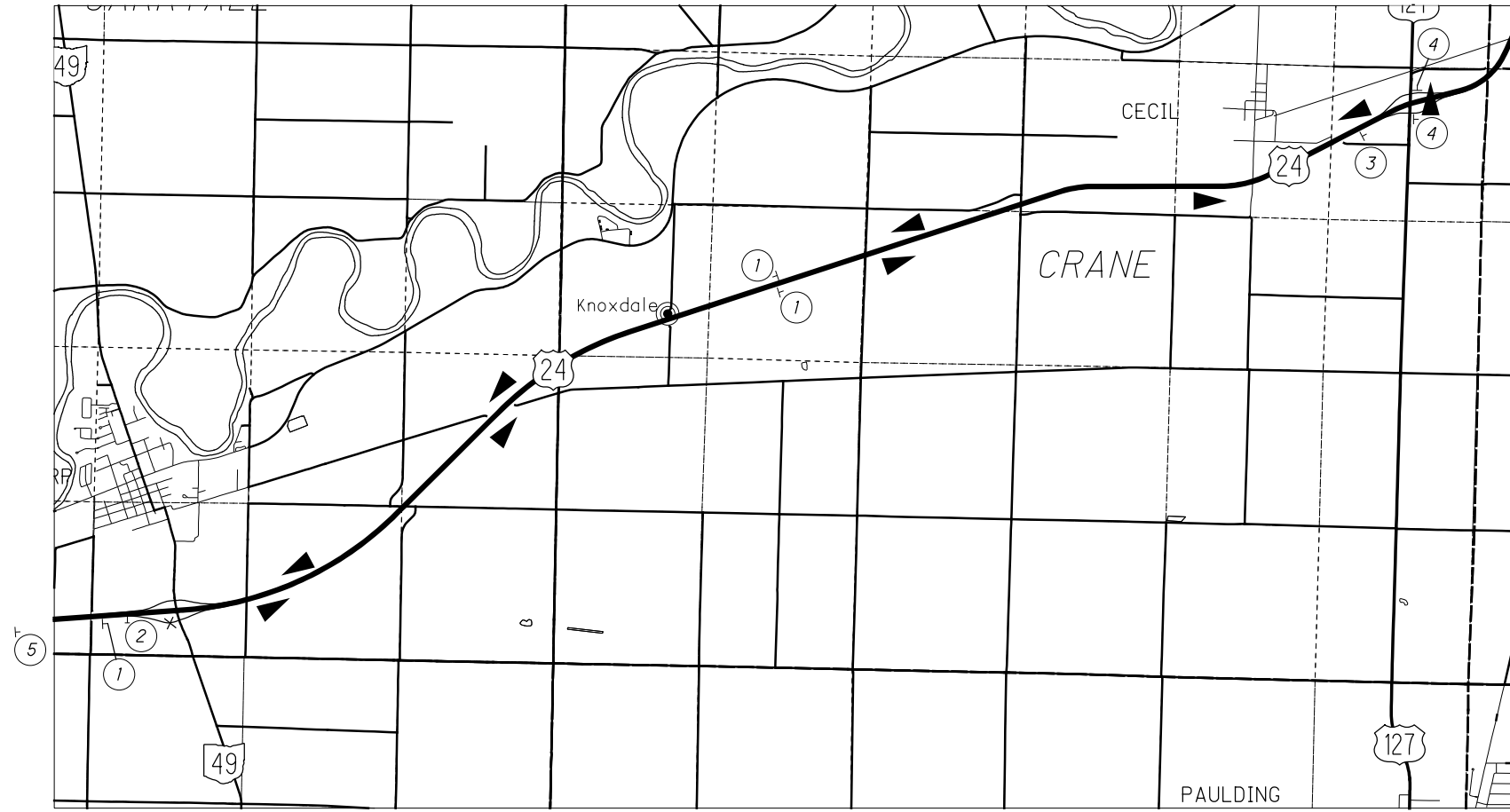
THE CONTRACTOR SHALL DESIGNATE TO THE ENGINEER, A PERSON RESPONSIBLE FOR MAINTENANCE OF TRAFFIC CONTROL DURING NON-WORK HOURS WHO SHALL BE AVAILABLE ON SITE WITHIN THIRTY (30) MINUTES AFTER NOTIFICATION.

UNLESS PHYSICALLY IMPOSSIBLE, ALL CONSTRUCTION EQUIPMENT SHALL EXIT ALL WORK ZONES FROM THE DOWNSTREAM END OF THE WORK ZONE OR BY INTERCHANGE RAMPS.

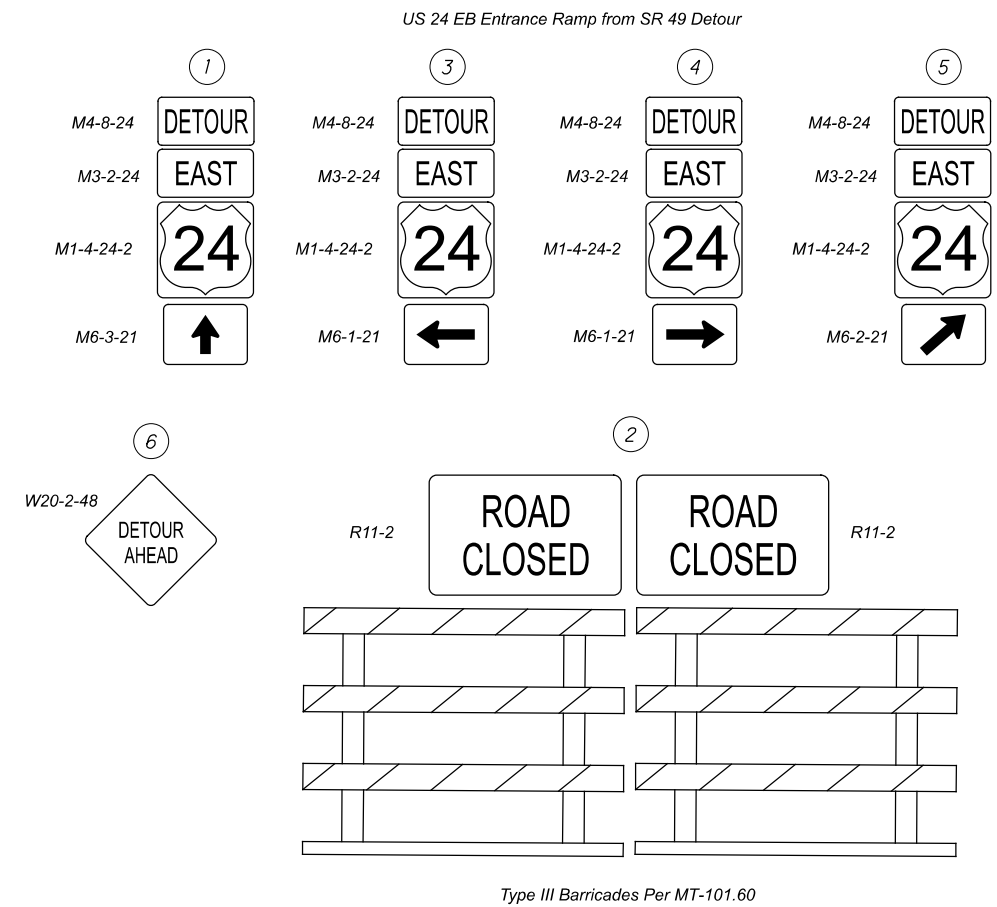
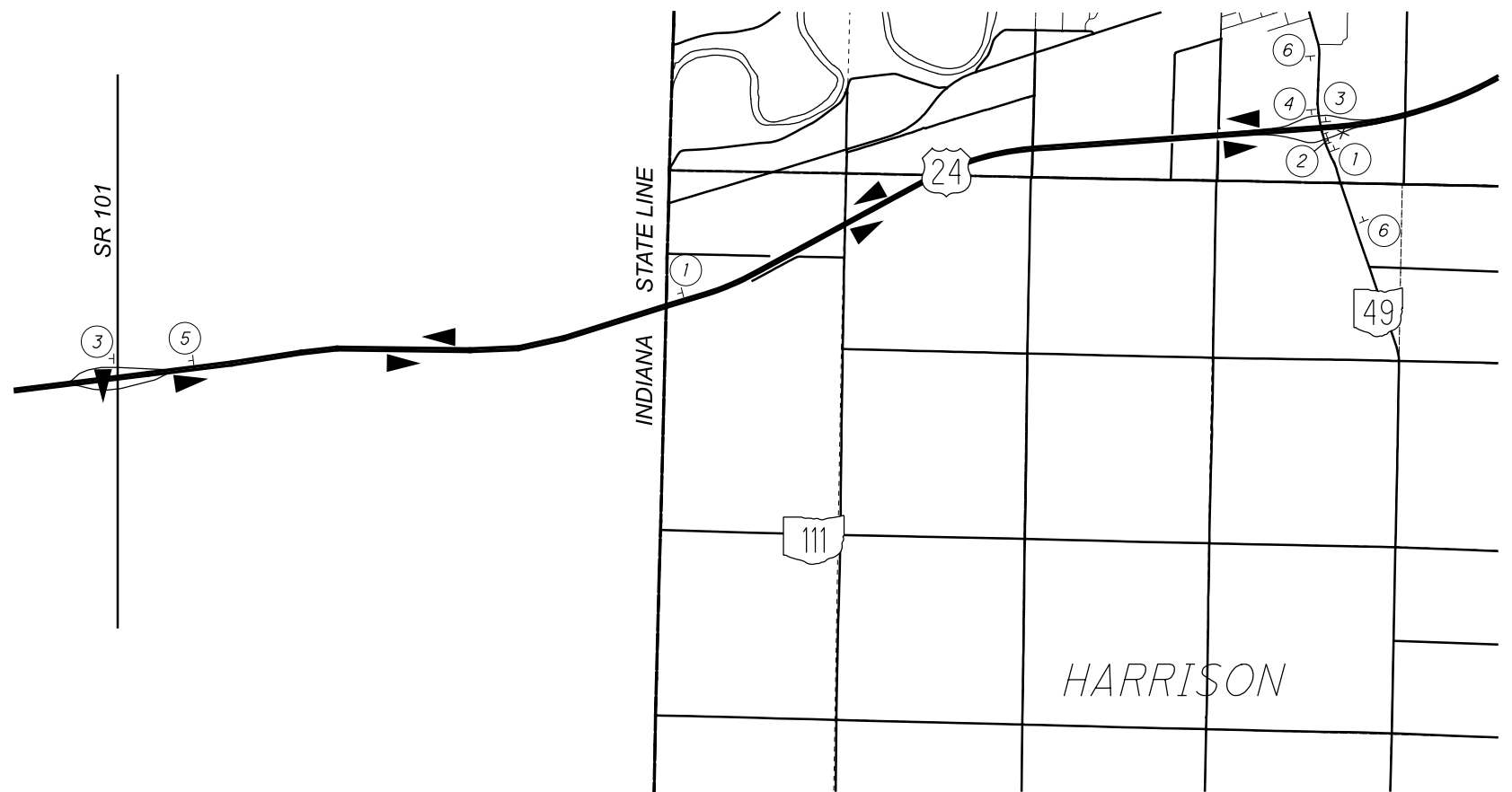
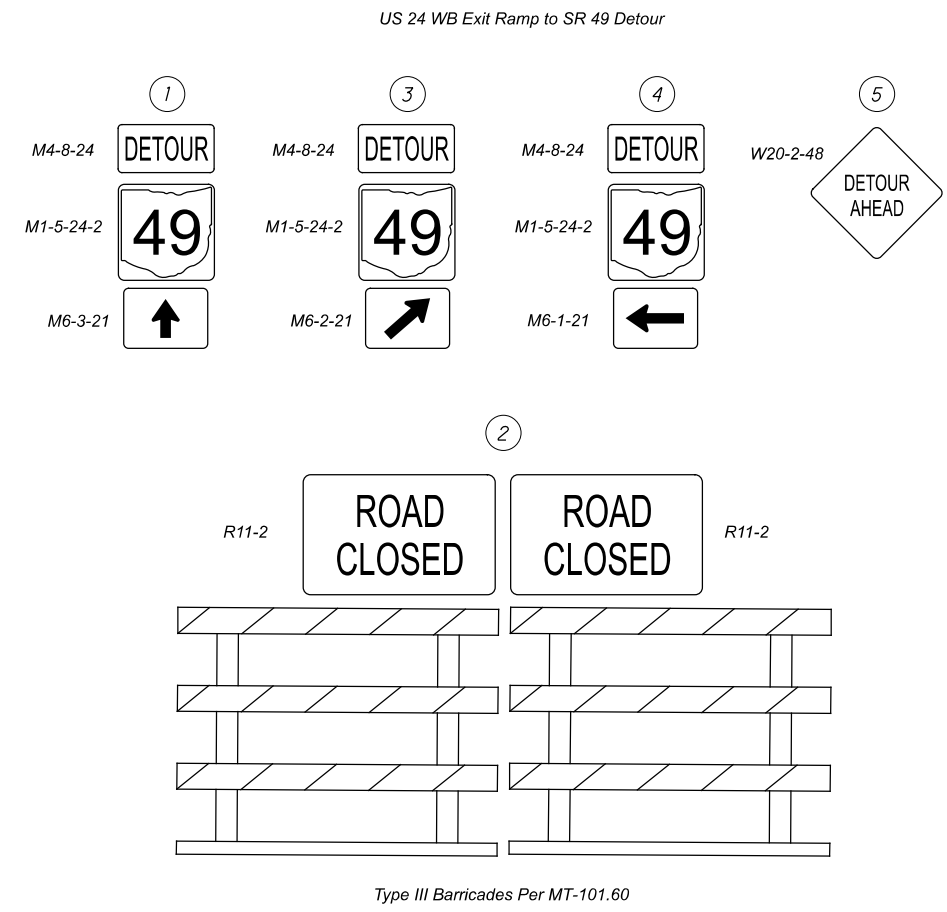
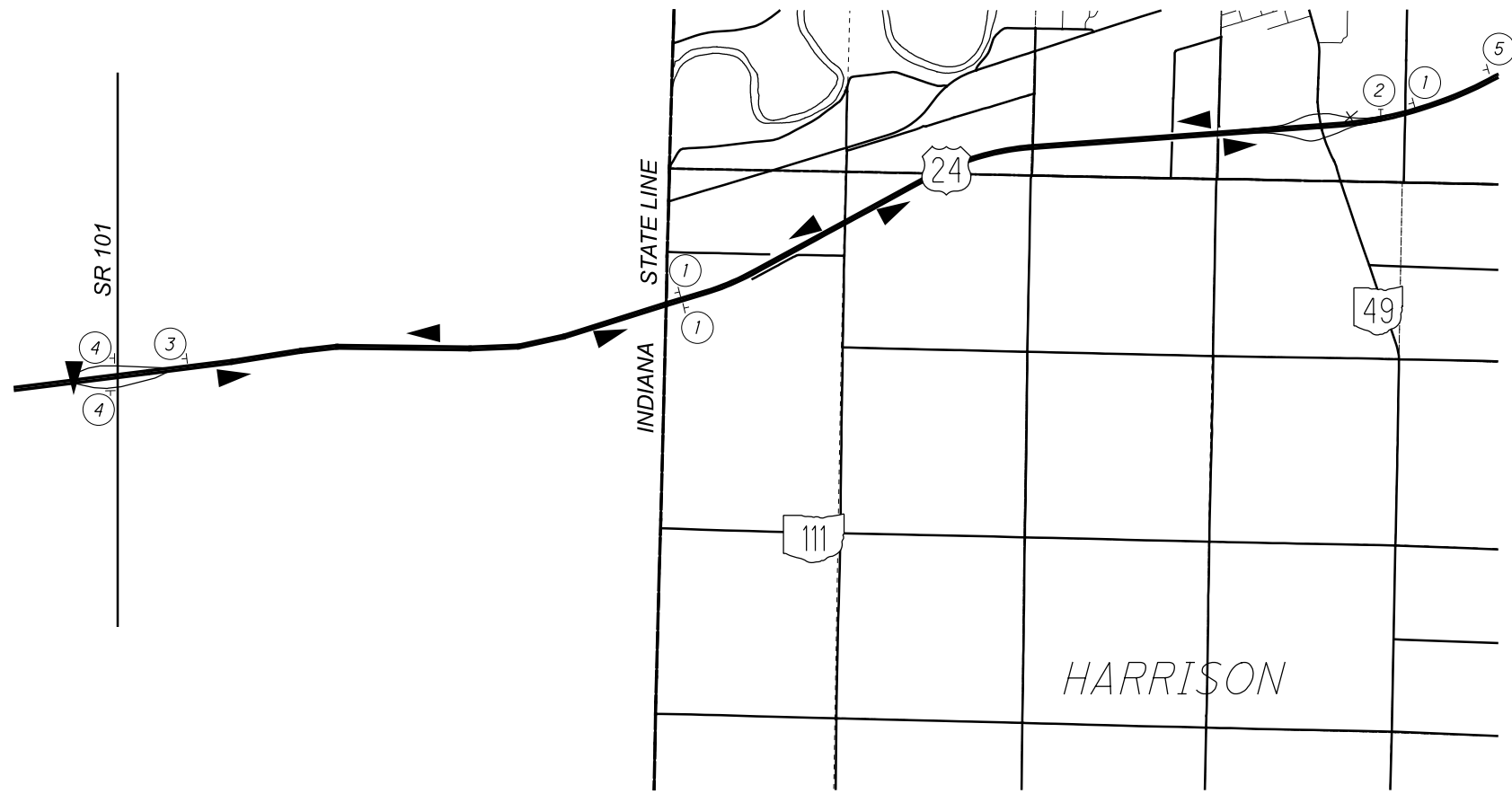
UNDER NO CIRCUMSTANCES SHALL THE CONTRACTOR BE PERMITTED TO DIRECTLY TRANSPORT OR OPERATE EQUIPMENT ACROSS THE OPEN LANES OF U.S. 24. THE CONTRACTOR WILL NOT BE PERMITTED TO UTILIZE THE EMERGENCY TURNAROUNDS AS PART OF THE HAUL ROUTE.

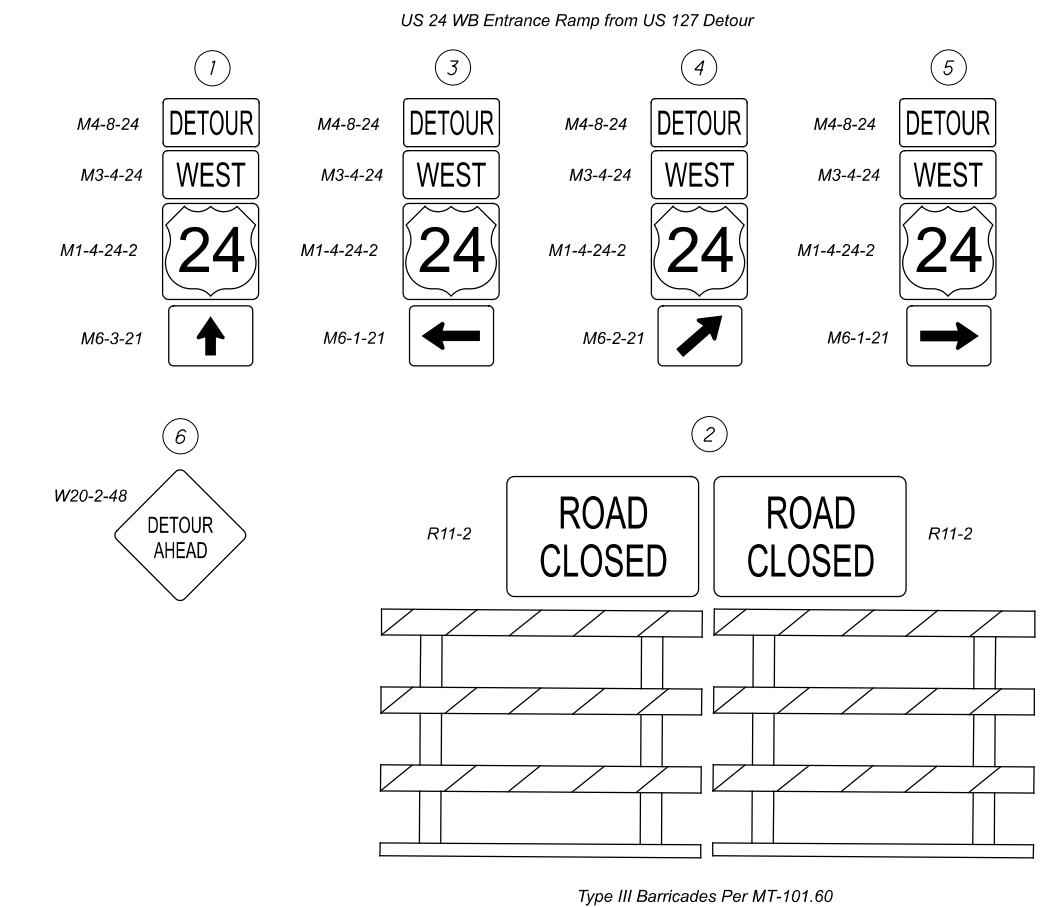
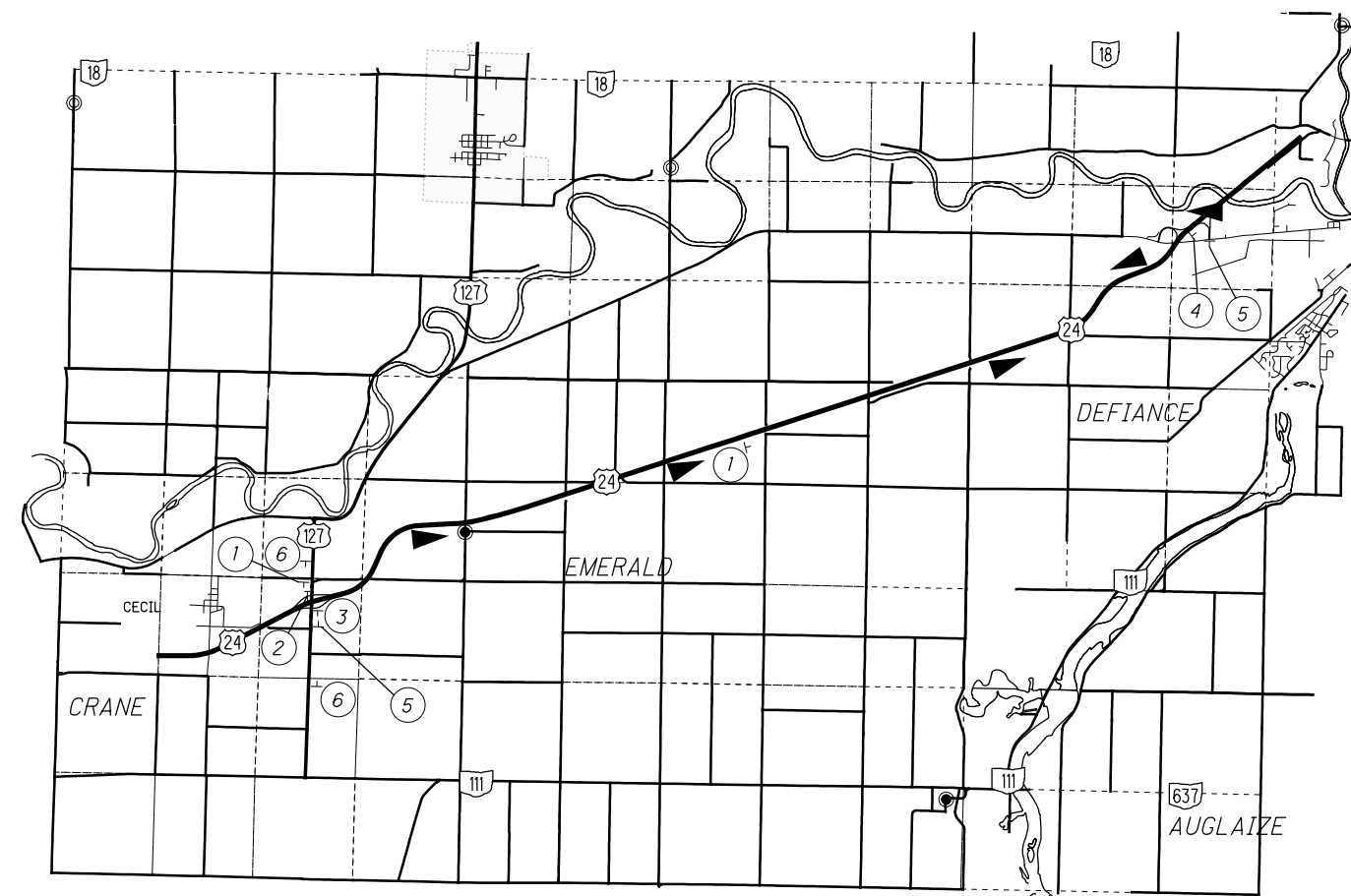
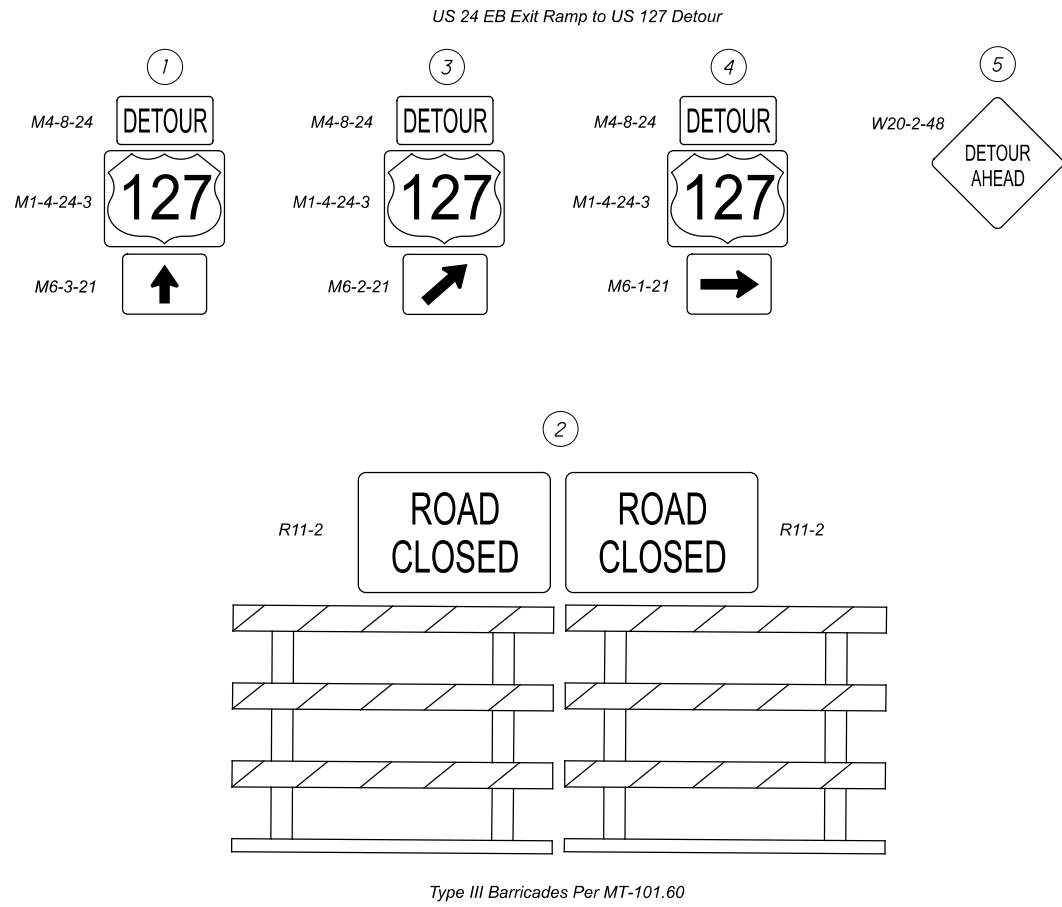
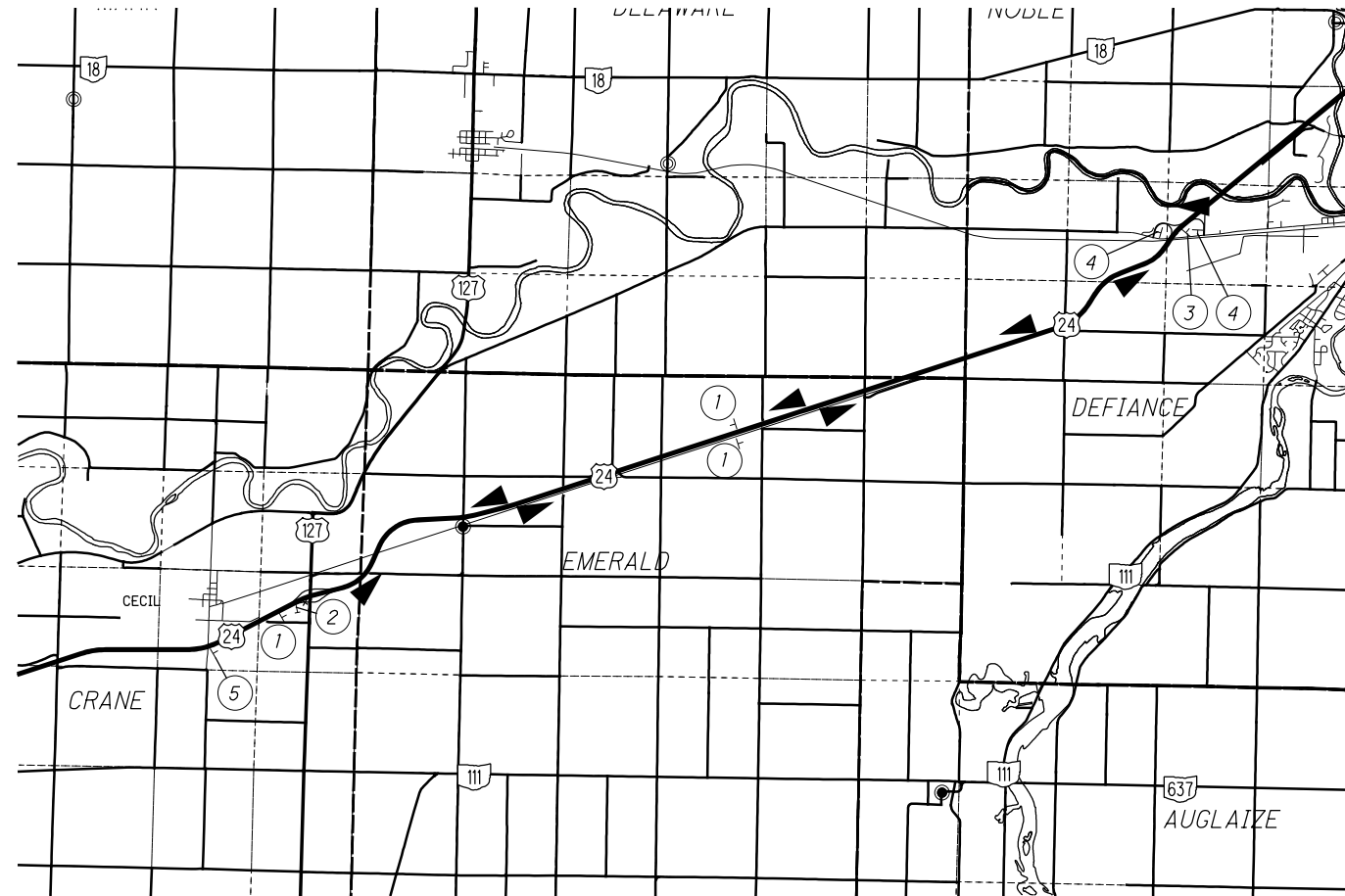
ALL WORK AND TRAFFIC CONTROL DEVICES SHALL BE IN ACCORDANCE WITH C&MS 614 AND OTHER APPLICABLE PORTIONS OF THE SPECIFICATIONS, AS WELL AS THE OHIO MANUAL OF UNIFORM TRAFFIC CONTROL DEVICES. PAYMENT FOR ALL LABOR, EQUIPMENT AND MATERIALS SHALL BE INCLUDED IN THE LUMP SUM CONTRACT PRICE FOR ITEM 614, MAINTAINING TRAFFIC, UNLESS SEPARATELY ITEMIZED IN THE PLAN.

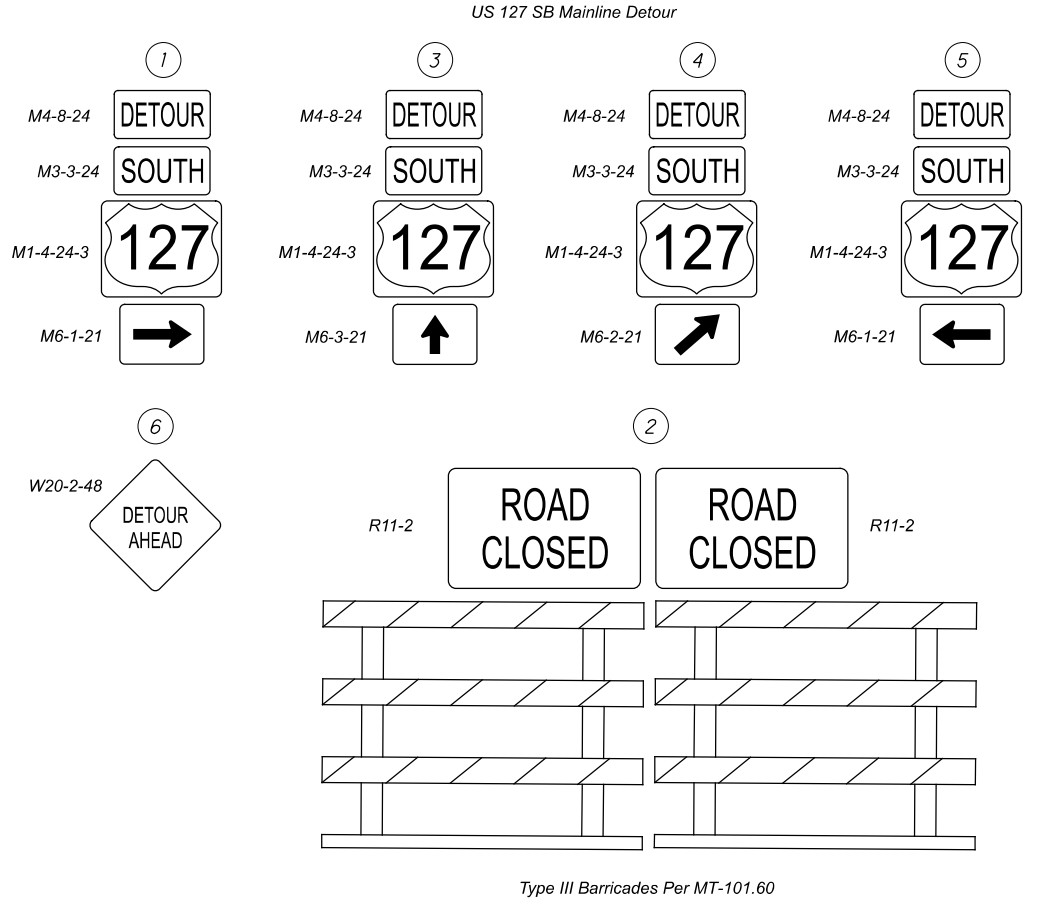
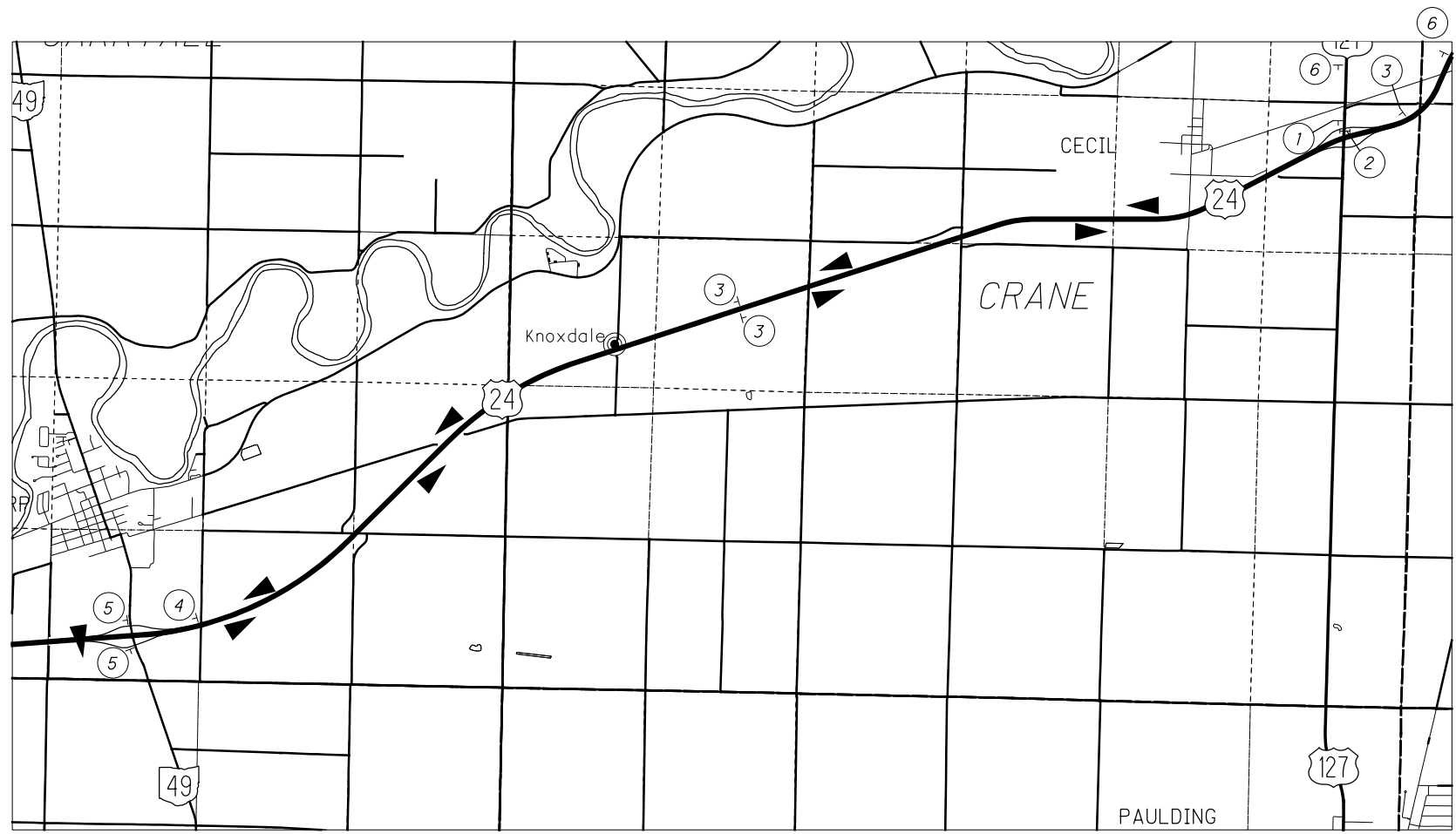




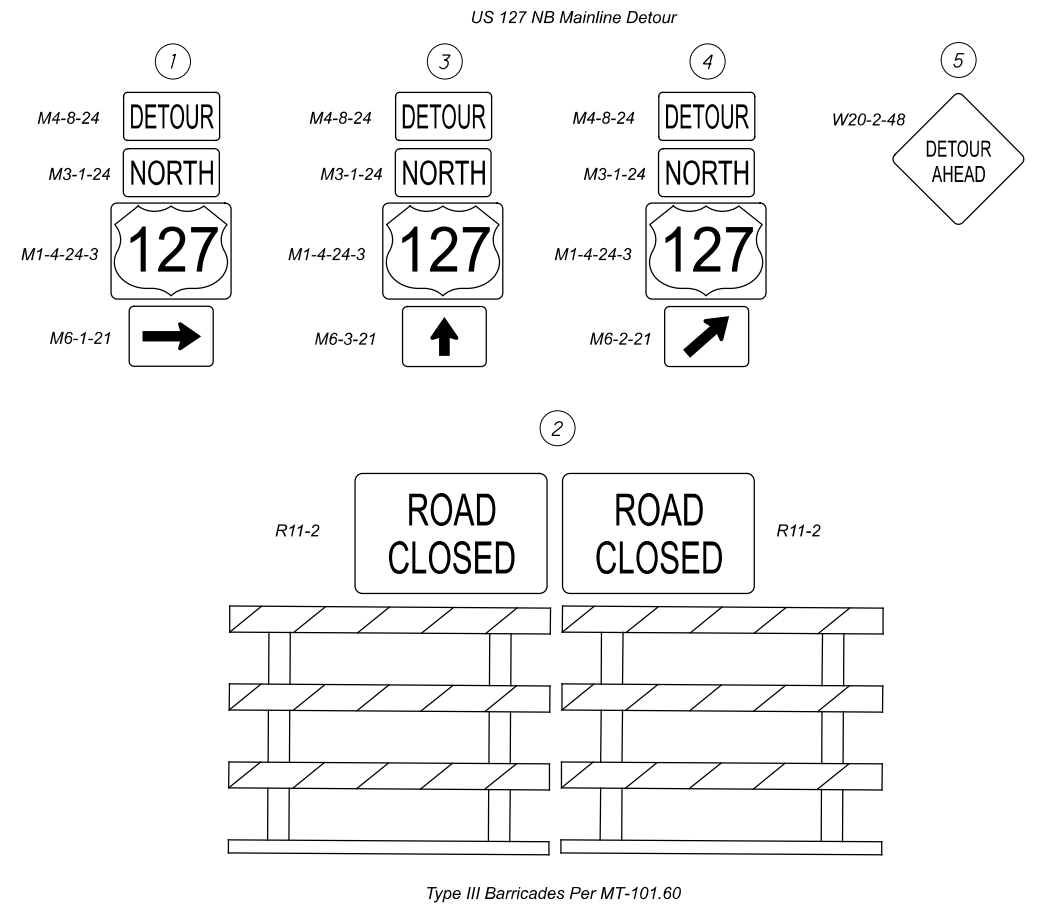
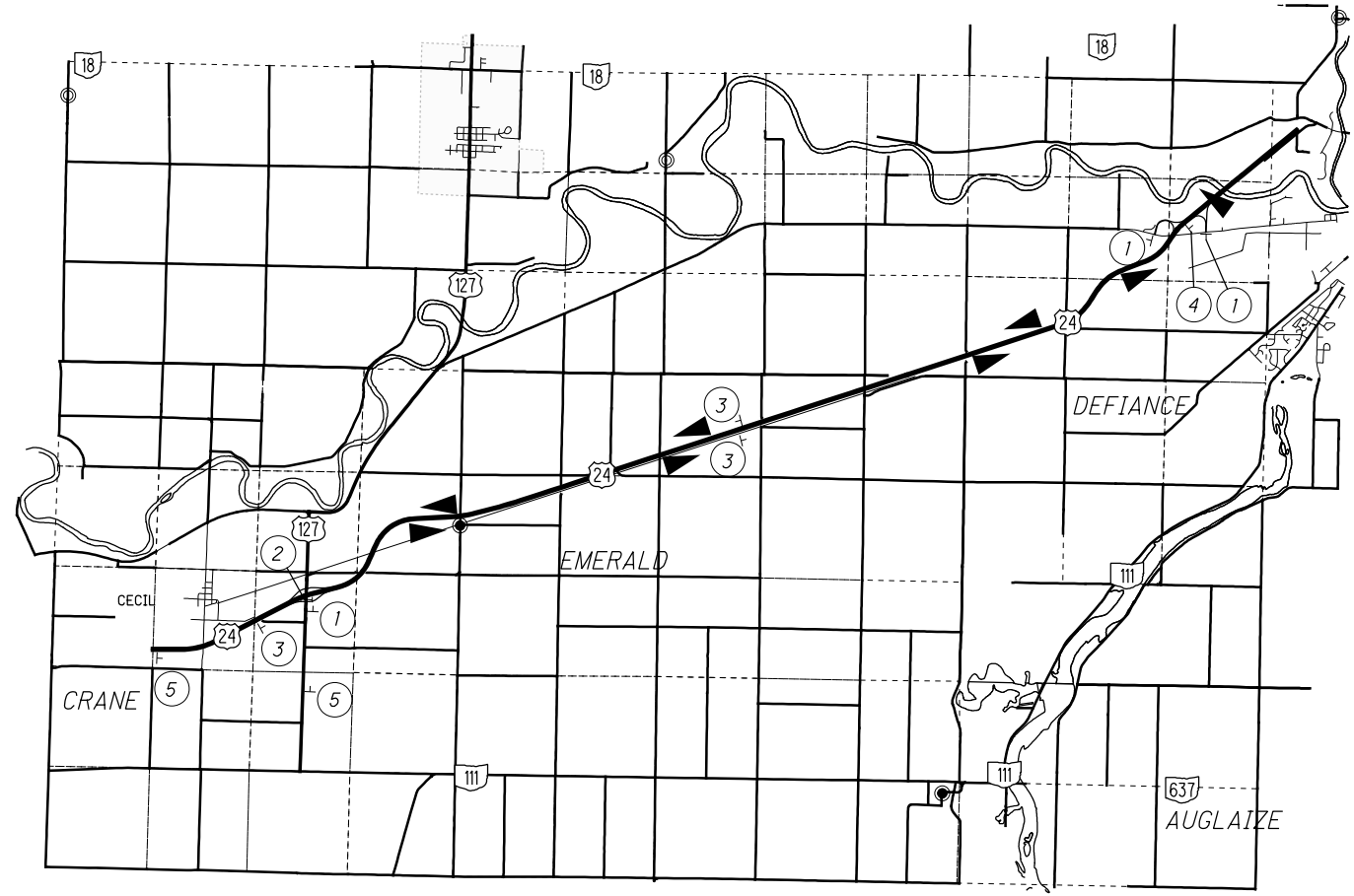
SR 49 RAMP CLOSURE AND DETOURS

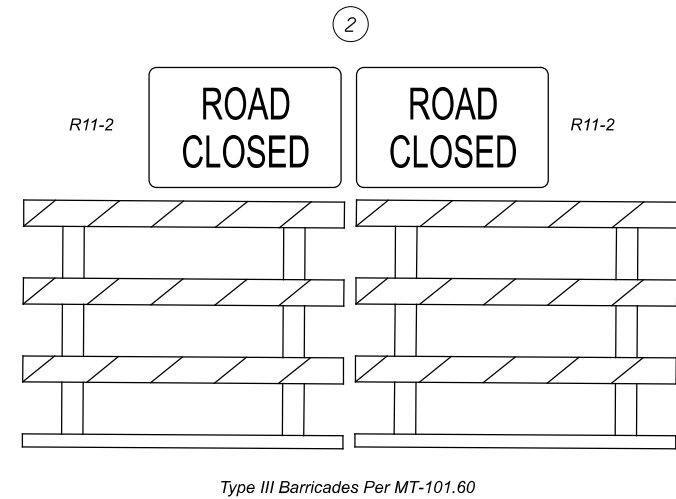
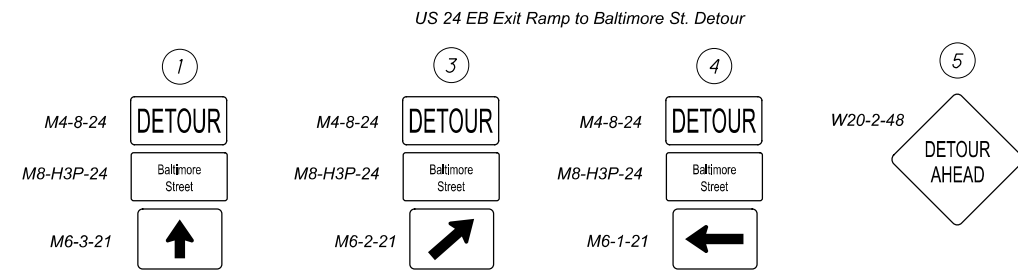
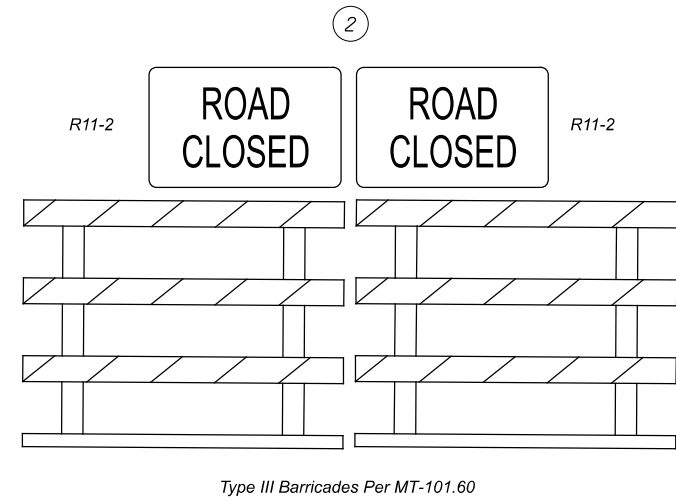
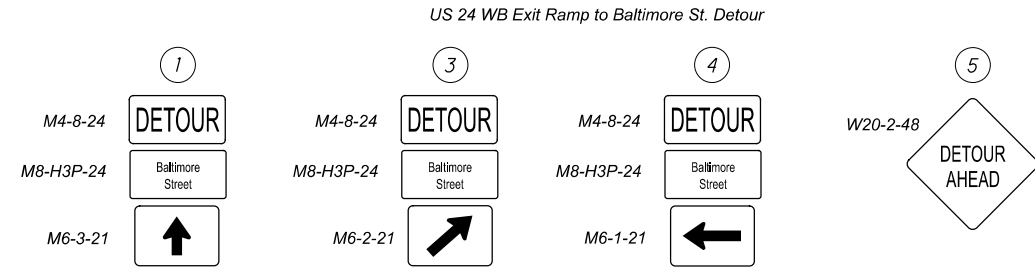
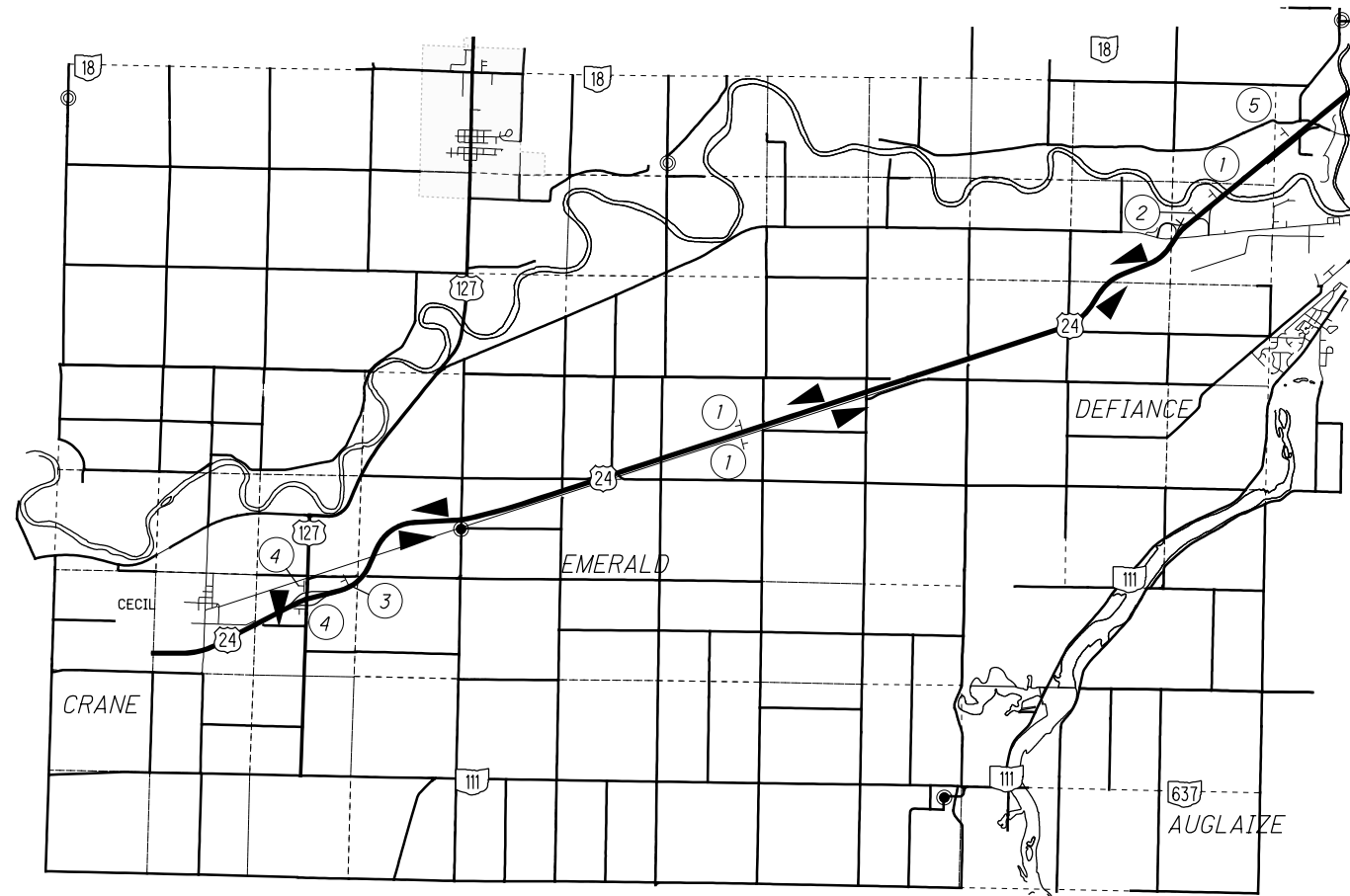


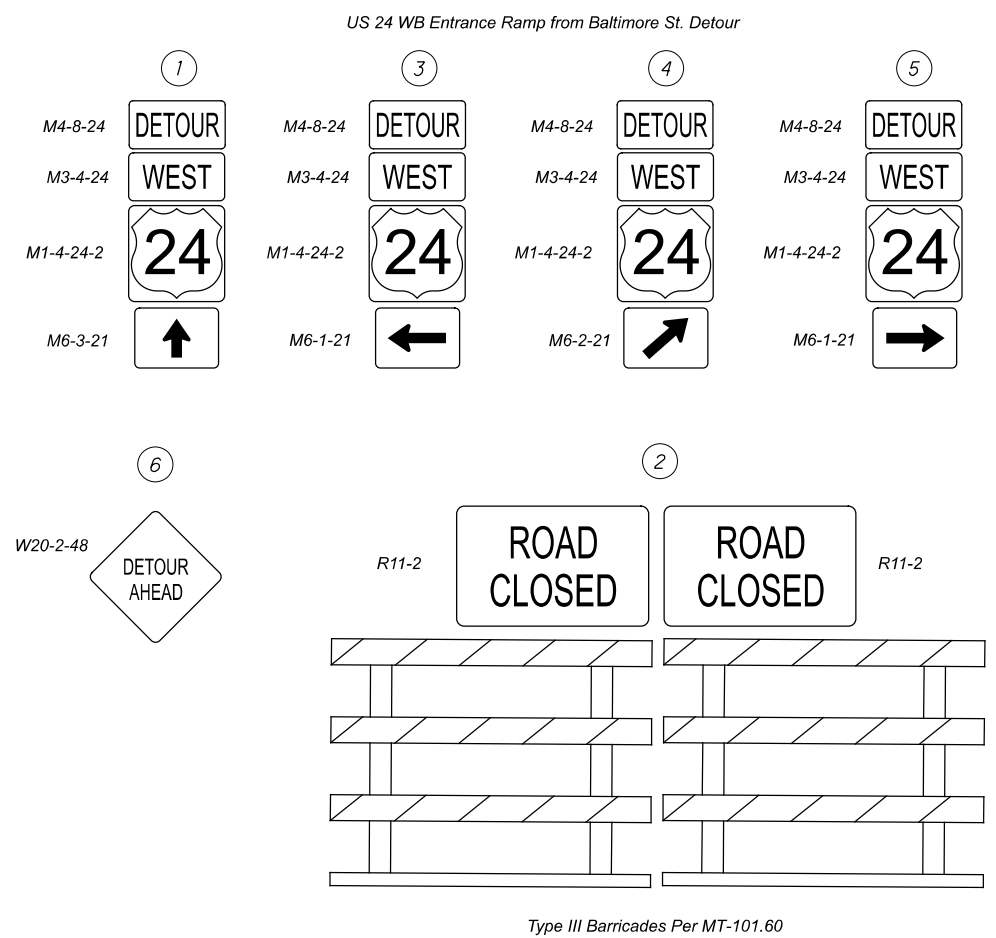
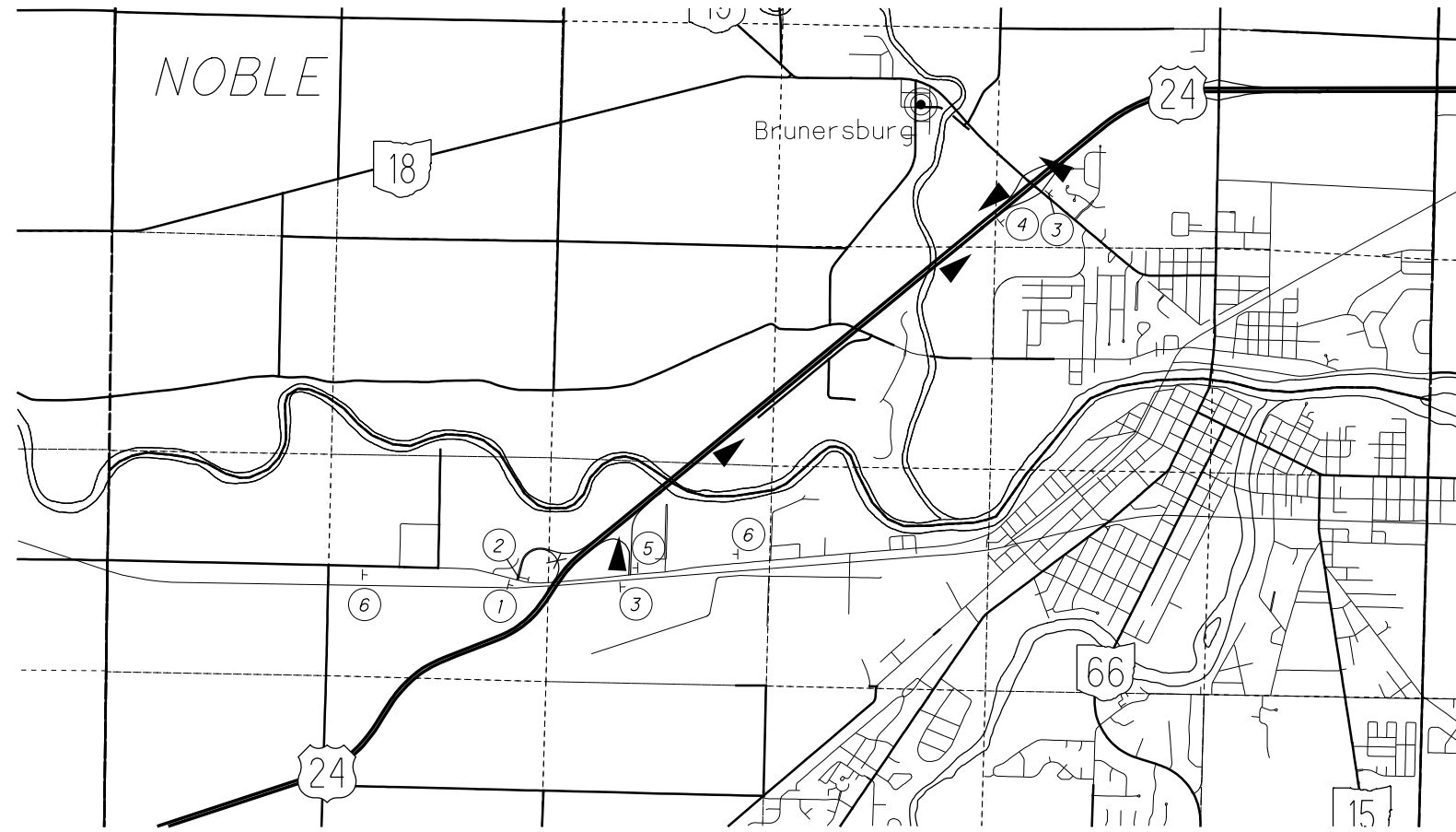




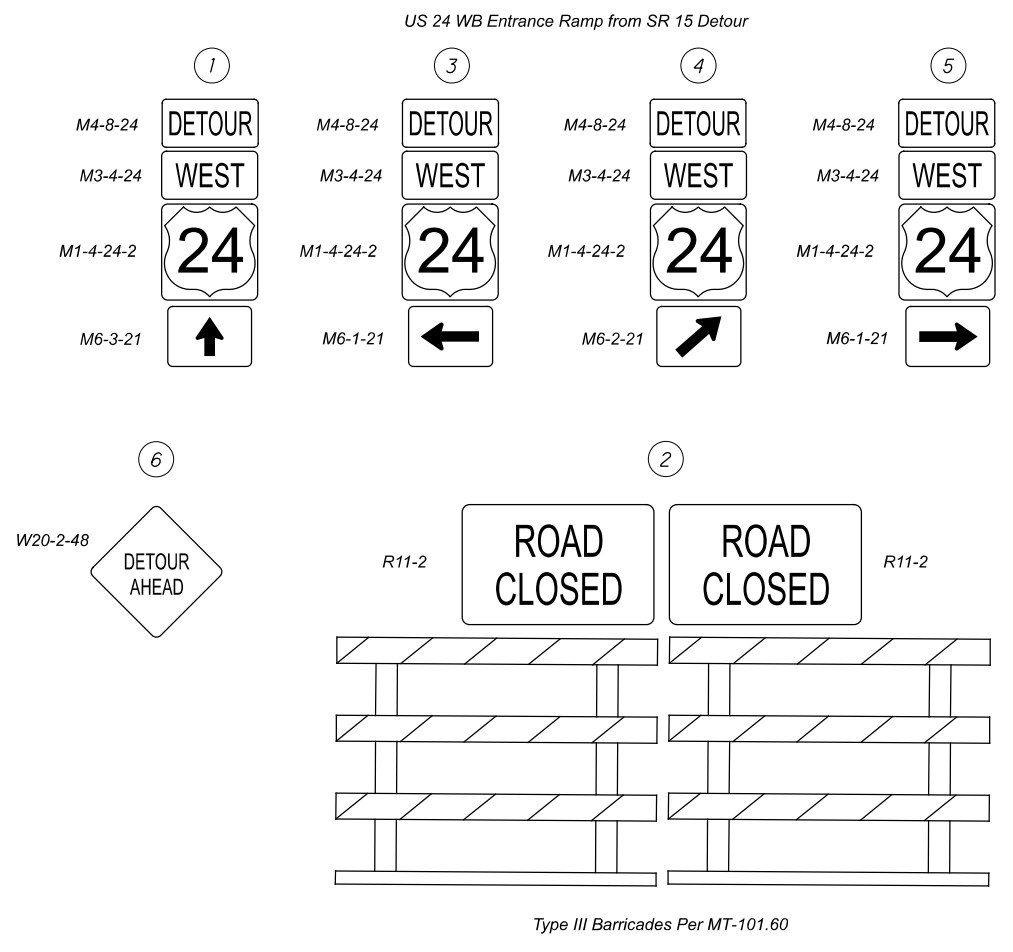
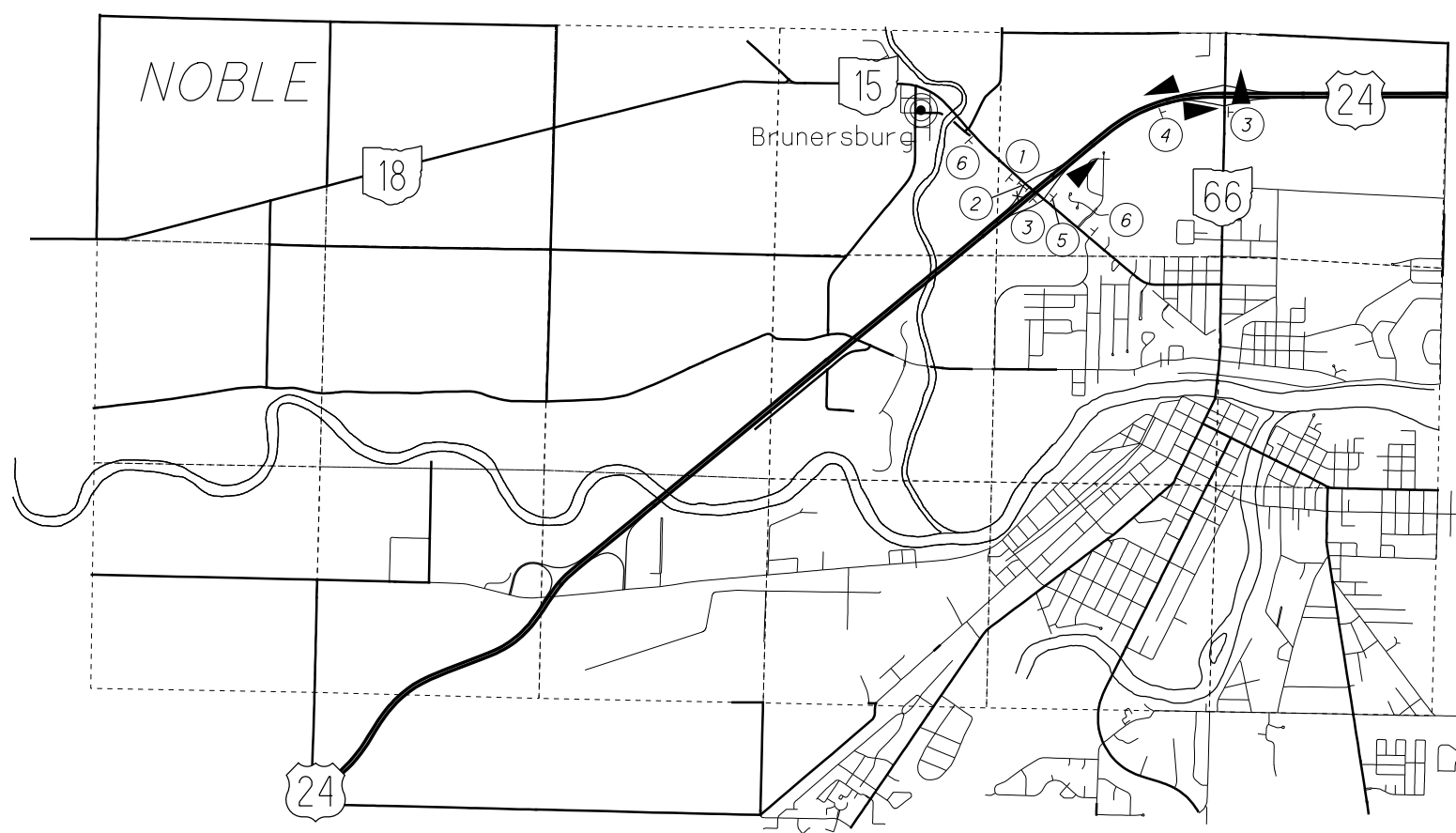
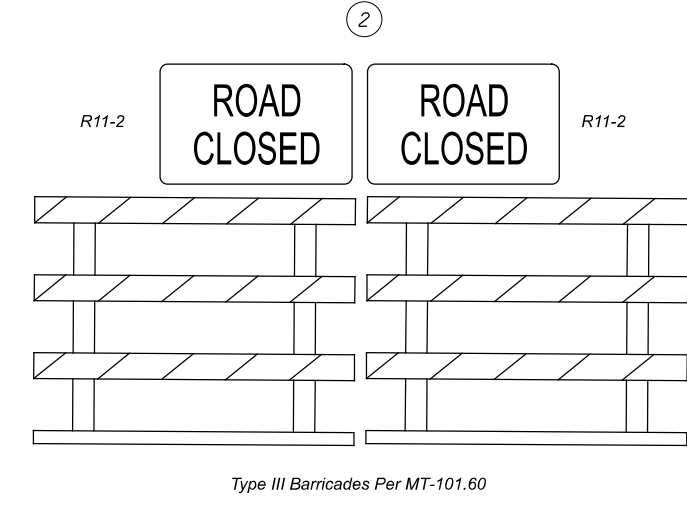
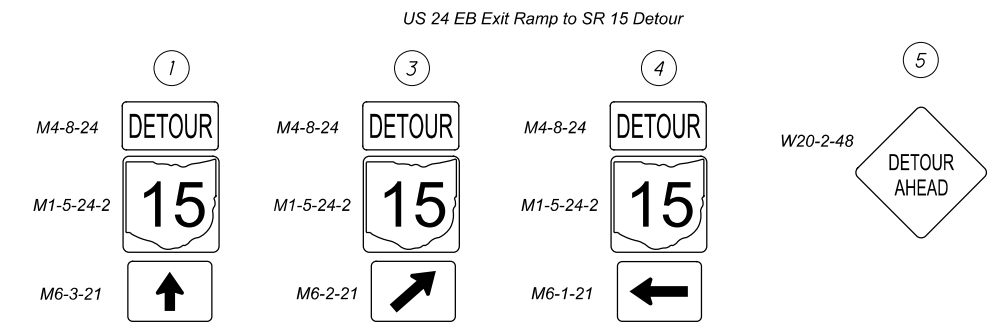
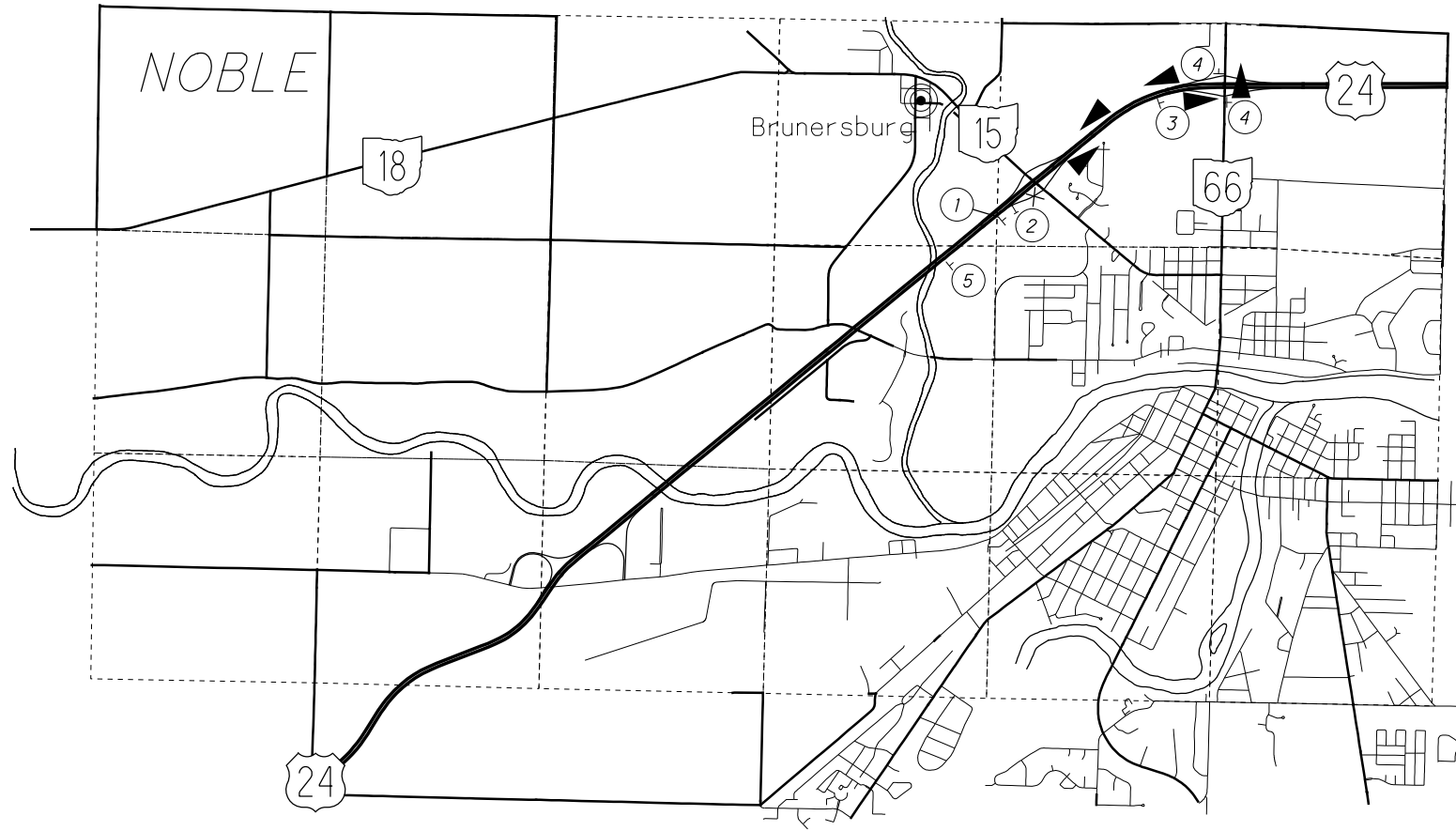
Note: The 2 detours shown on this sheet will be set up at the same time.

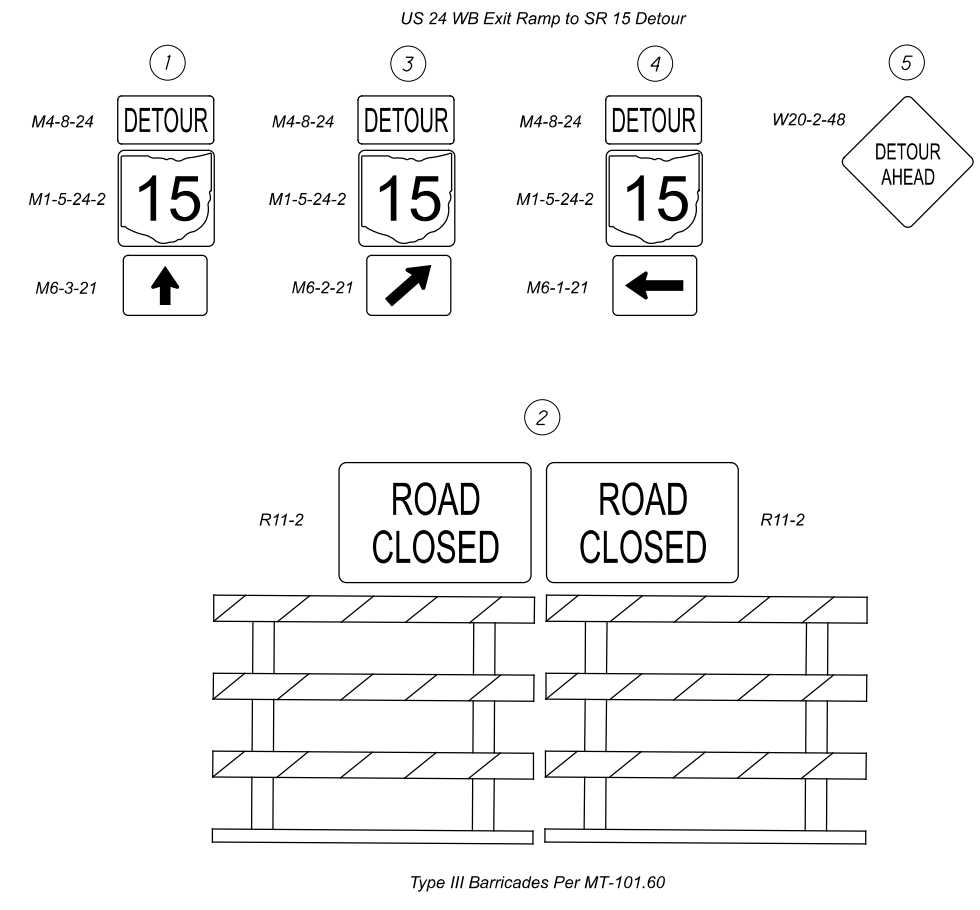
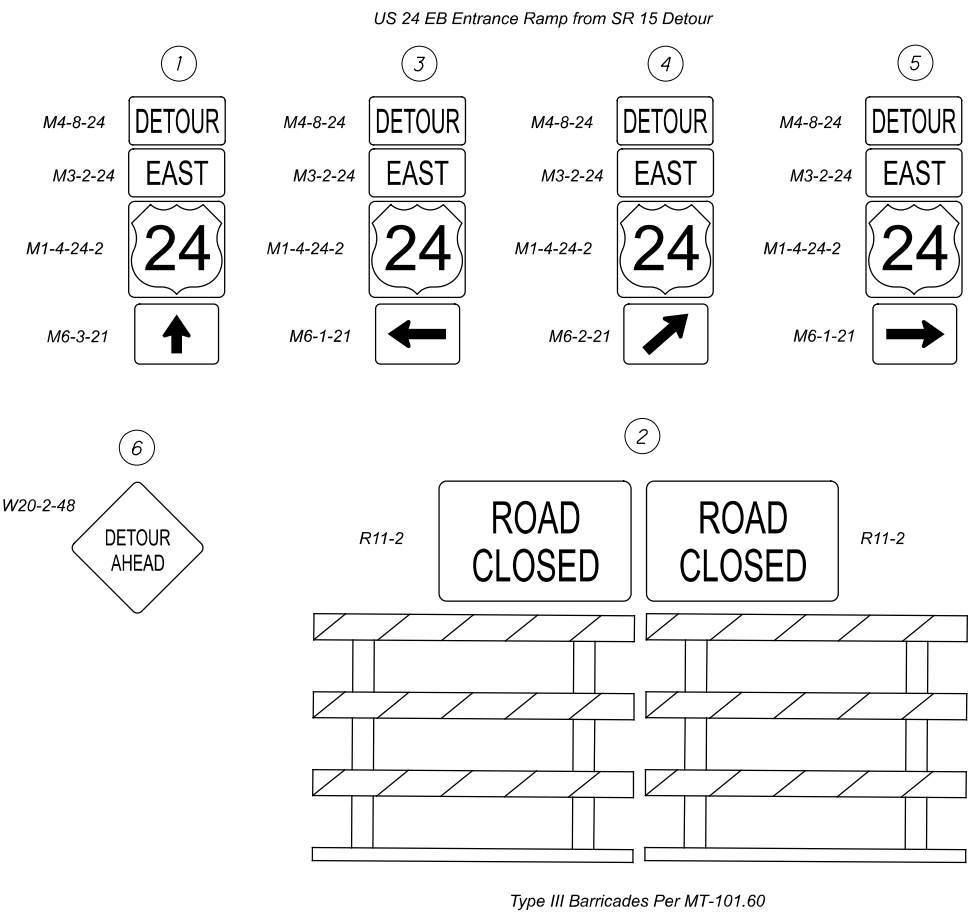
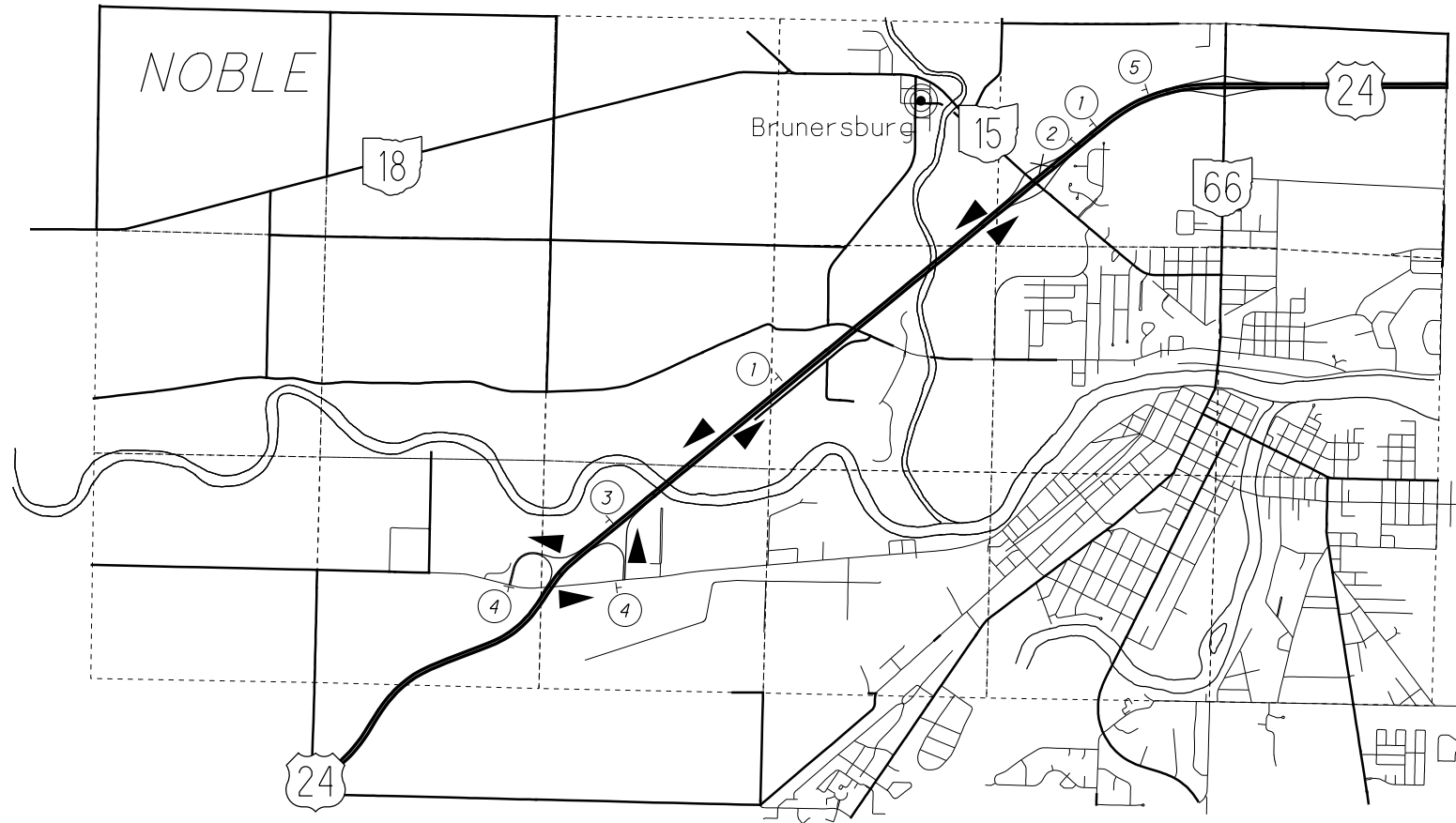
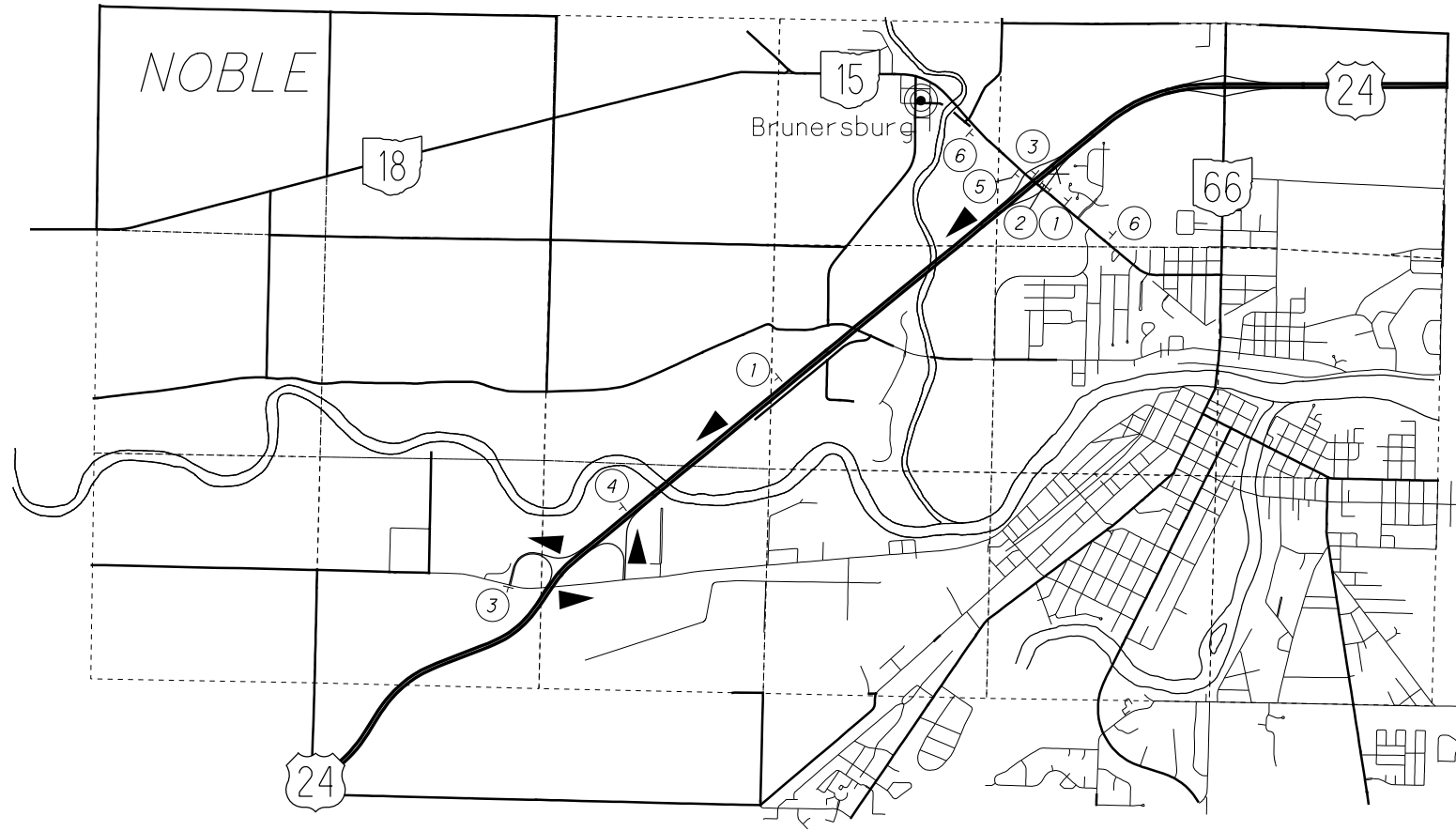


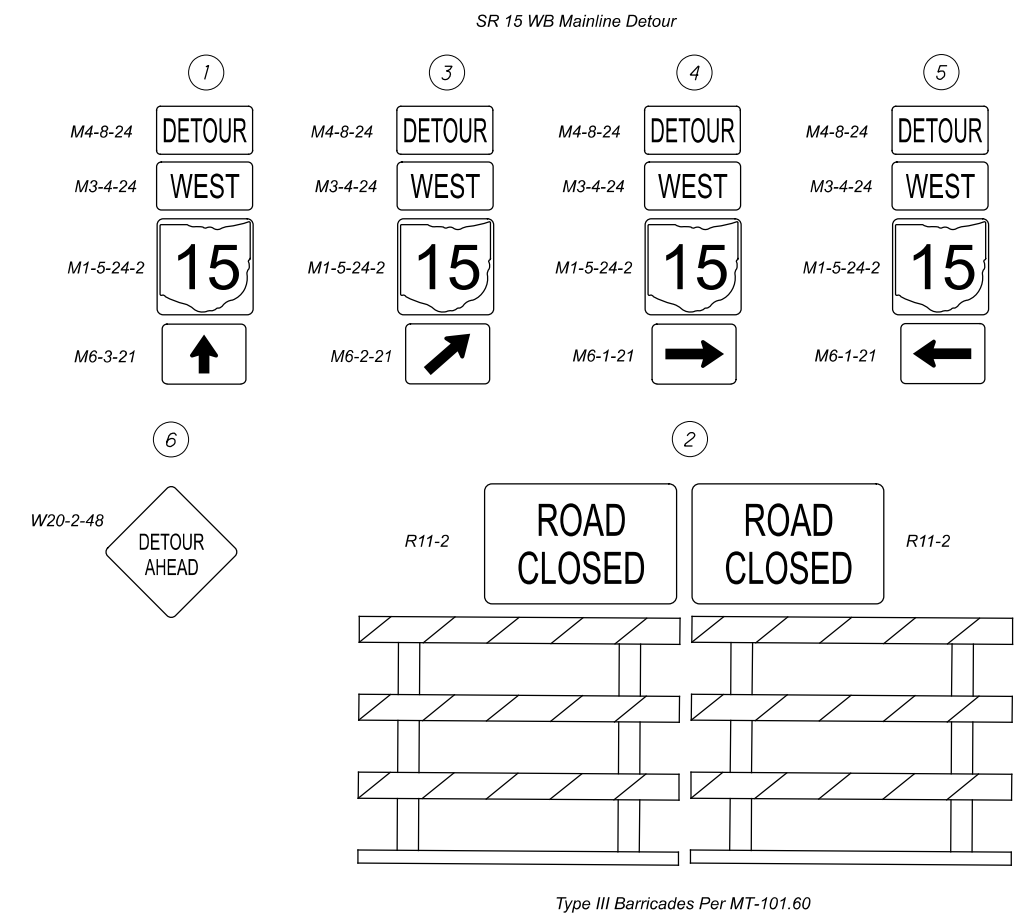
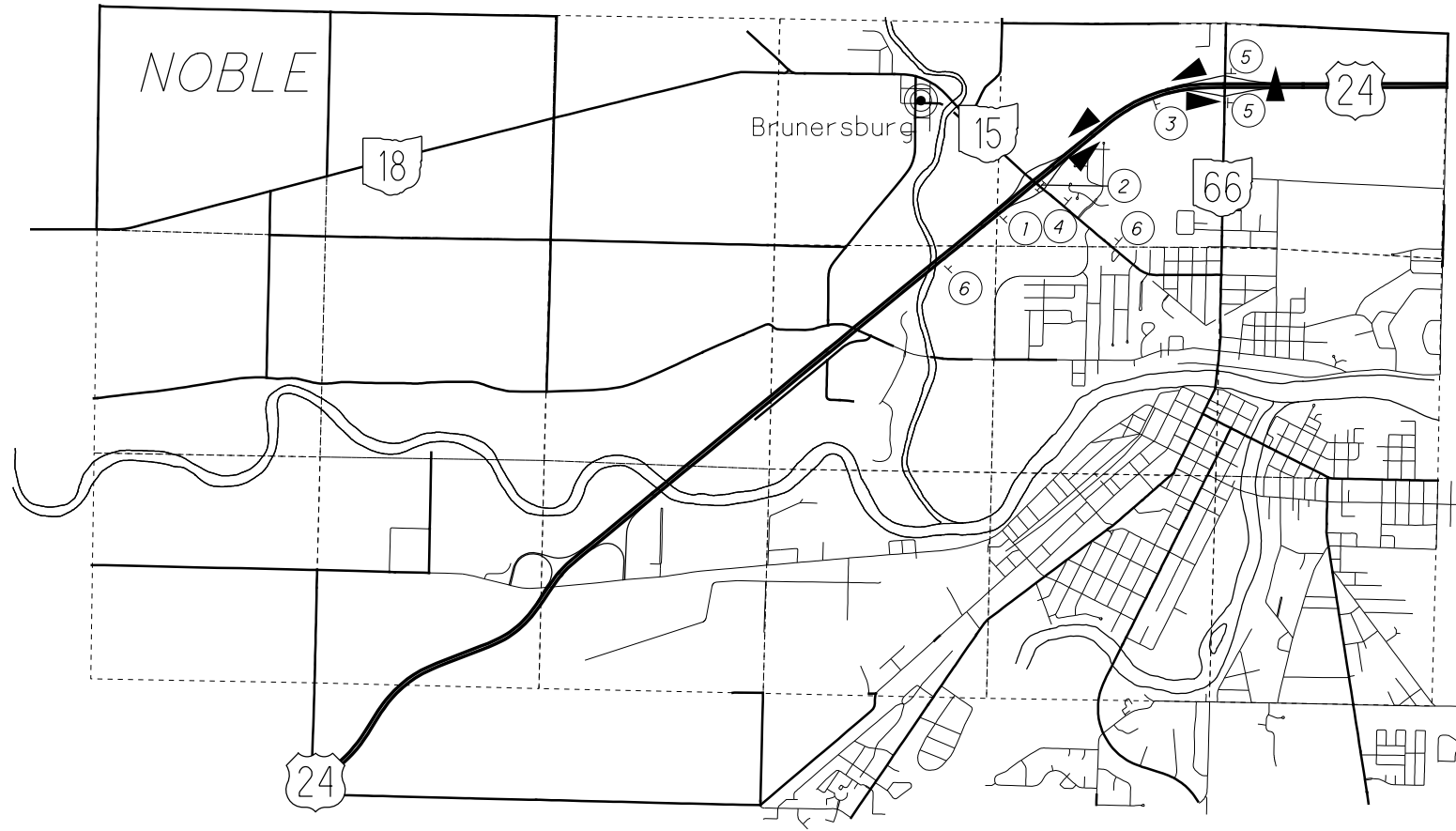




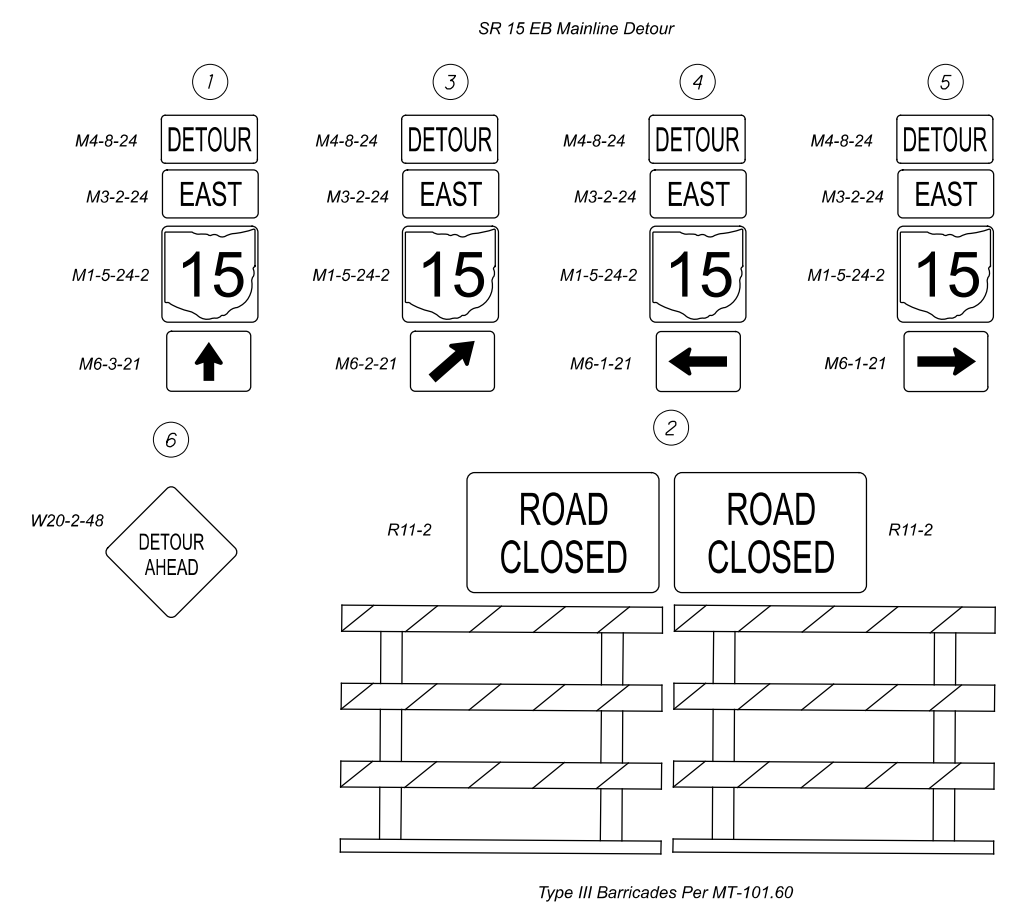
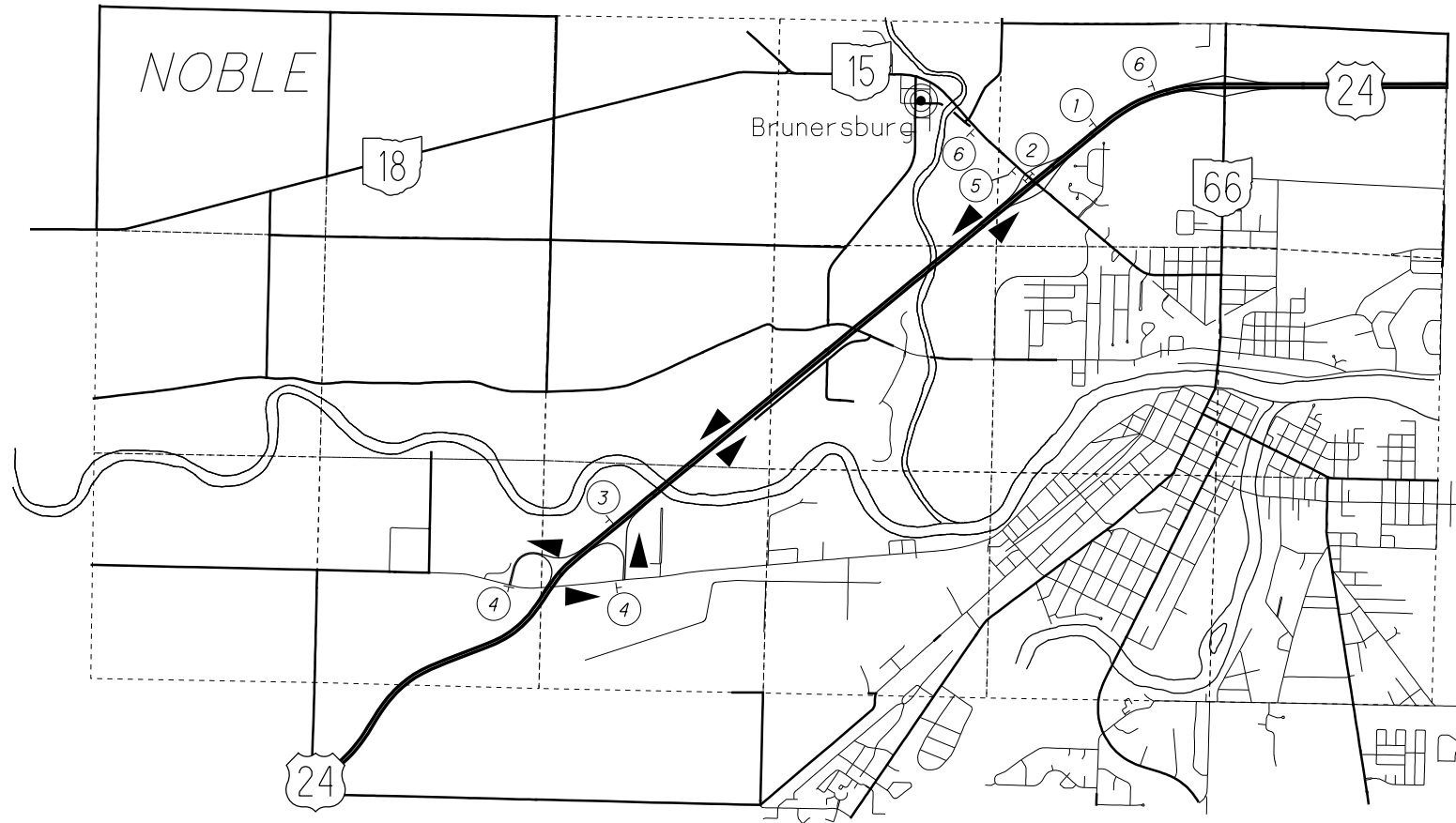


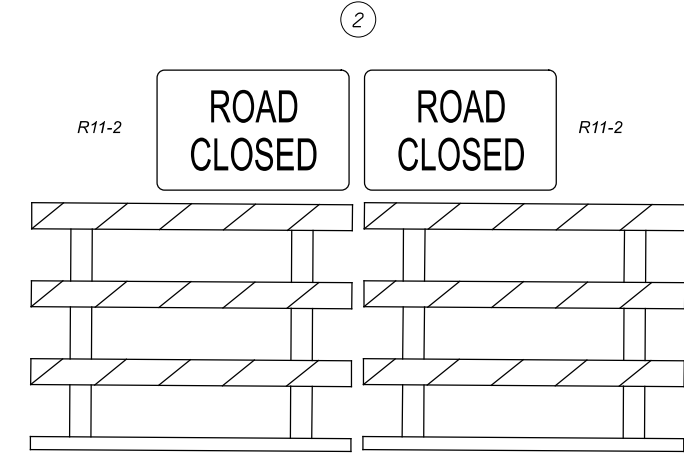
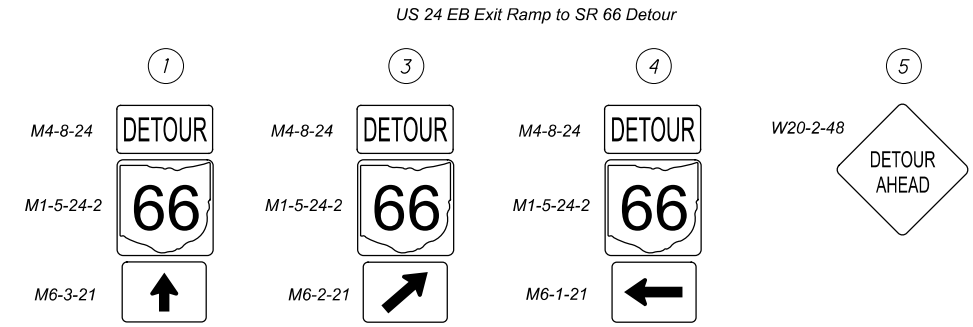
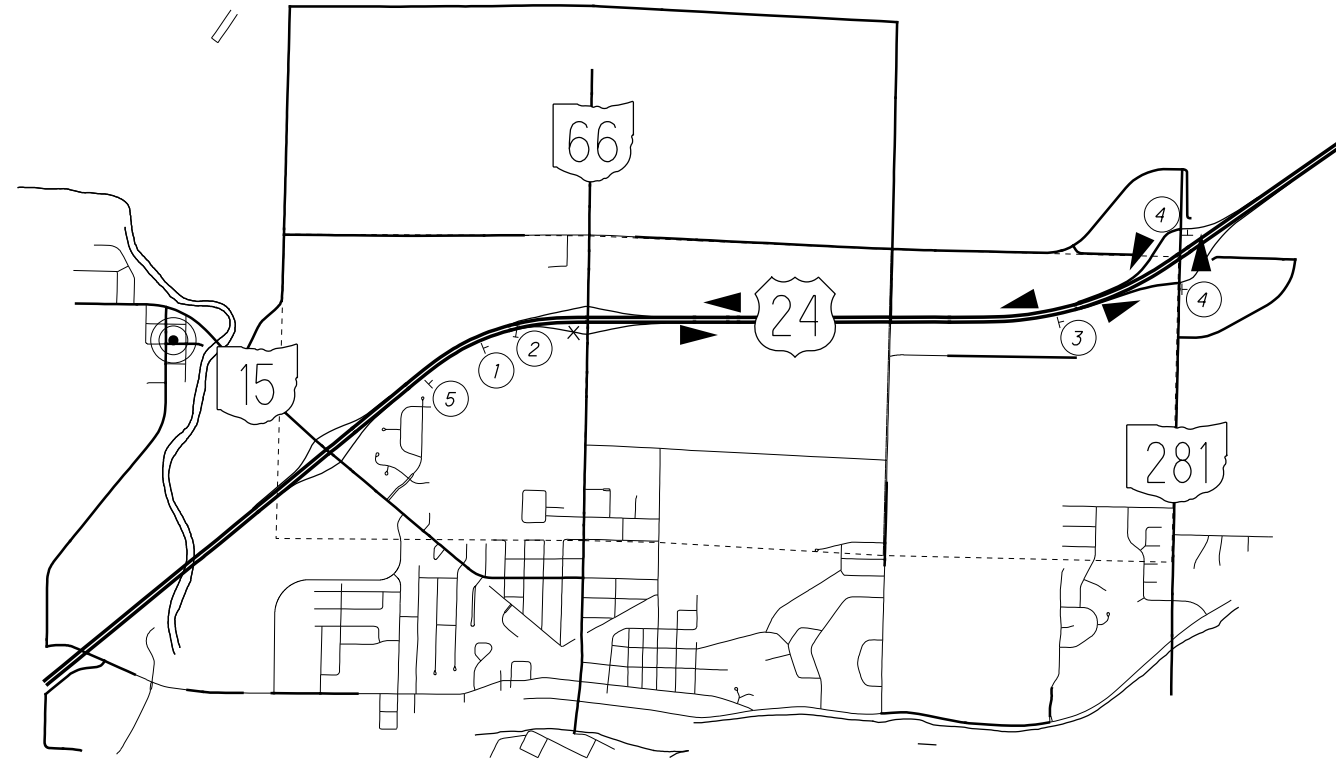




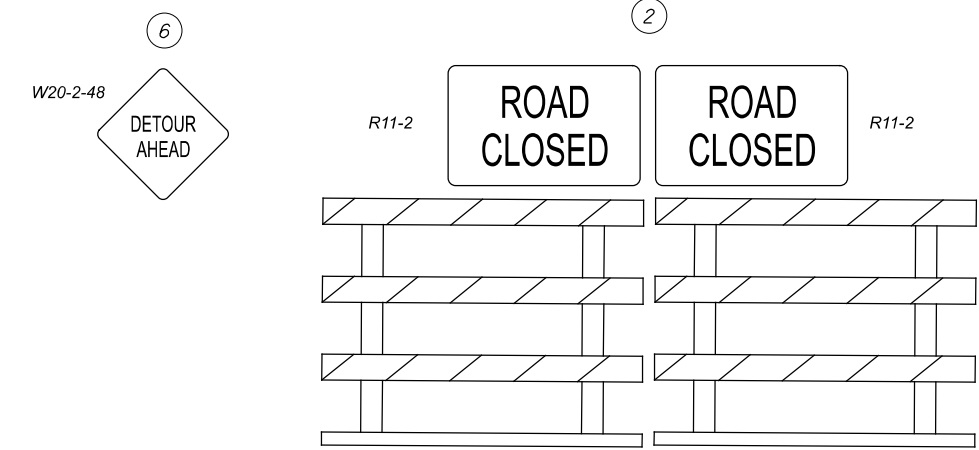
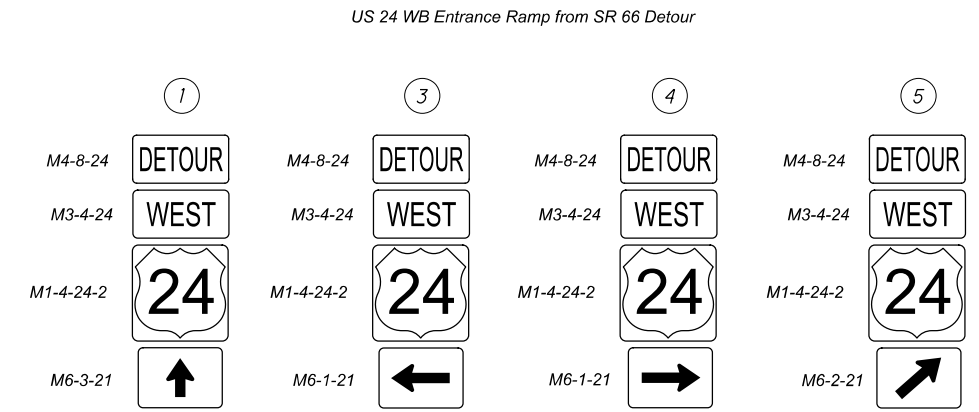
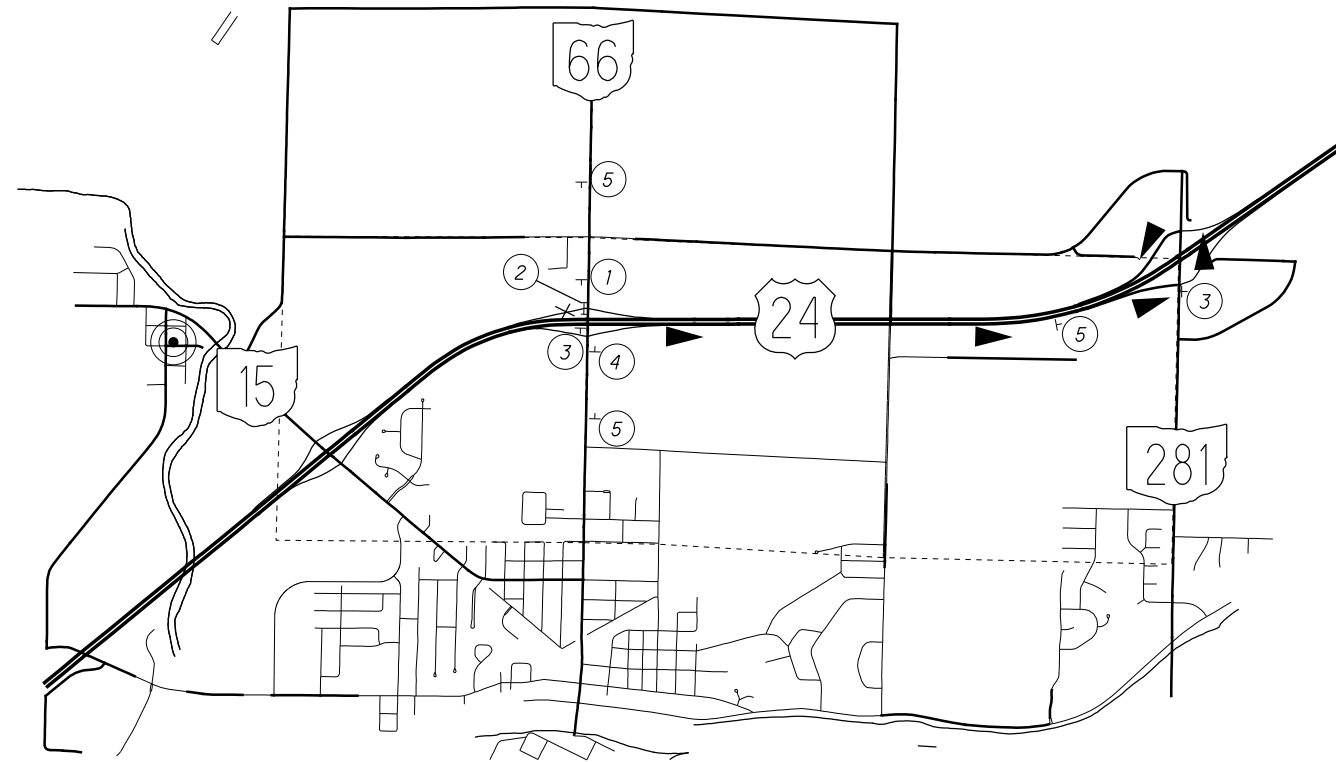


The 2 detours shown on this sheet will be set up at the same time.

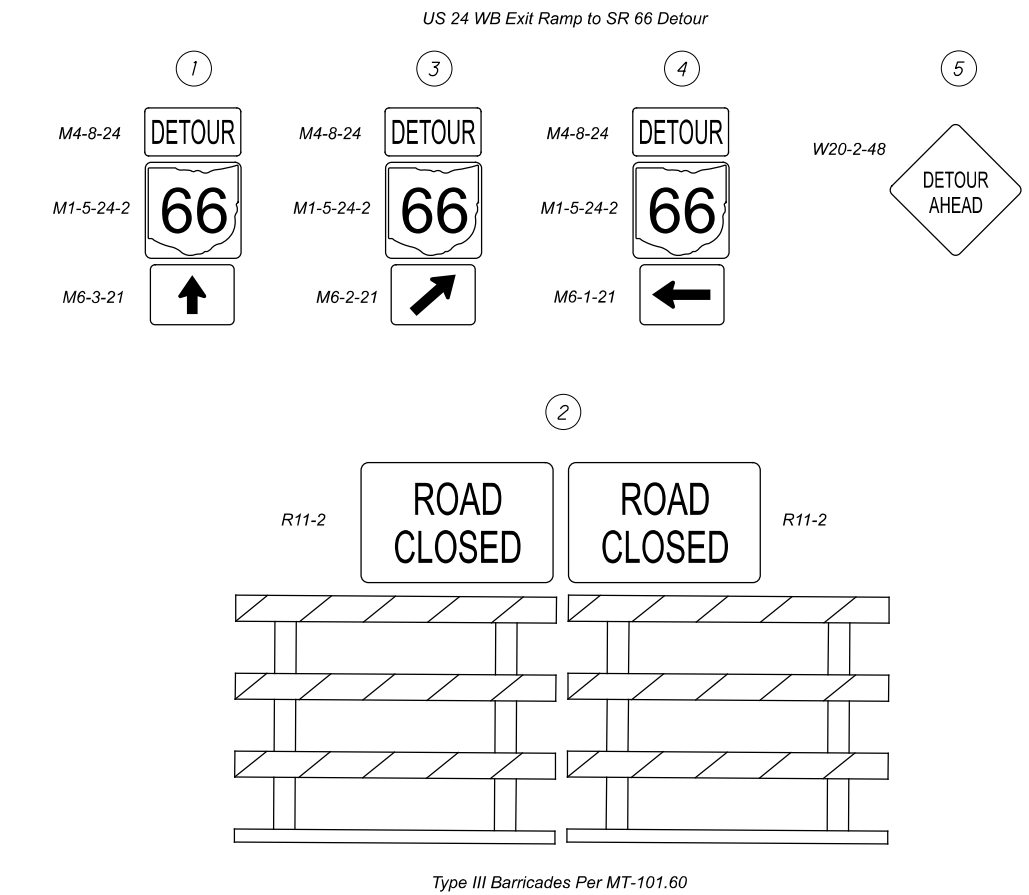
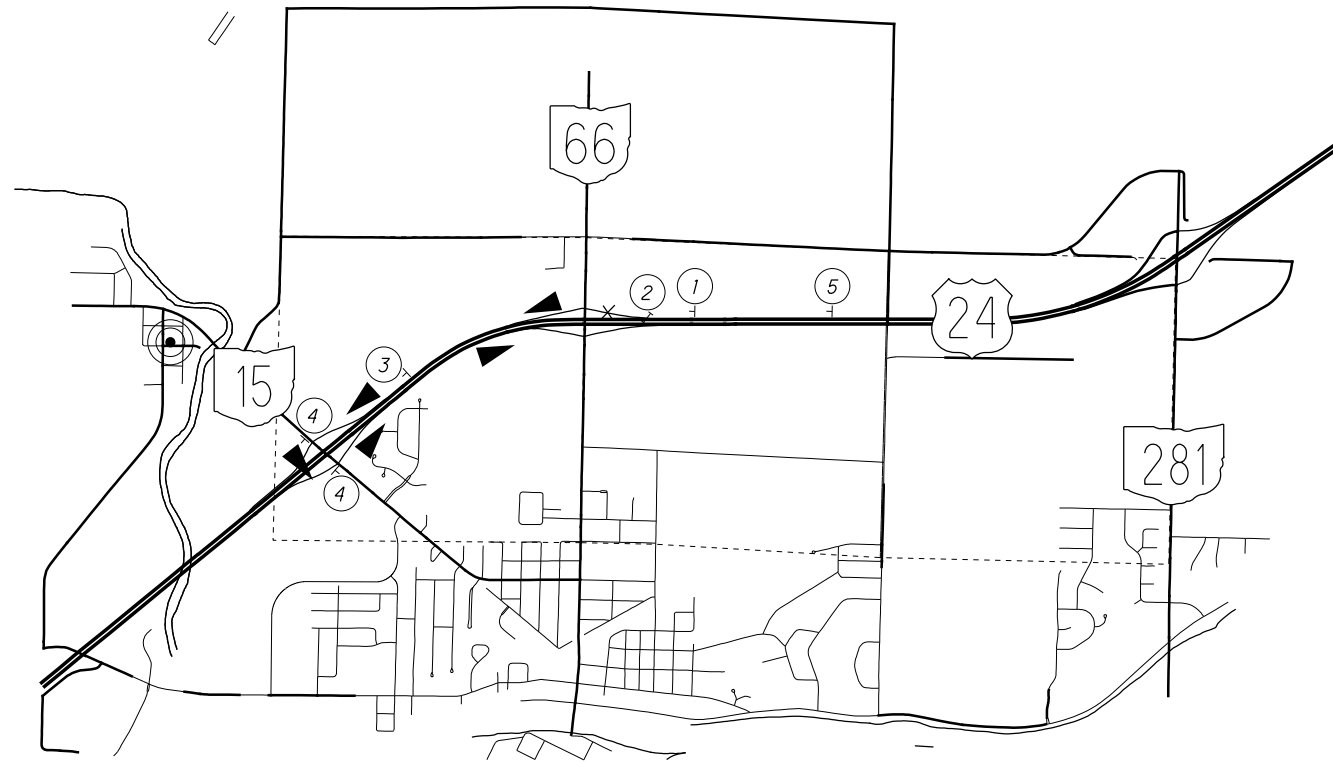
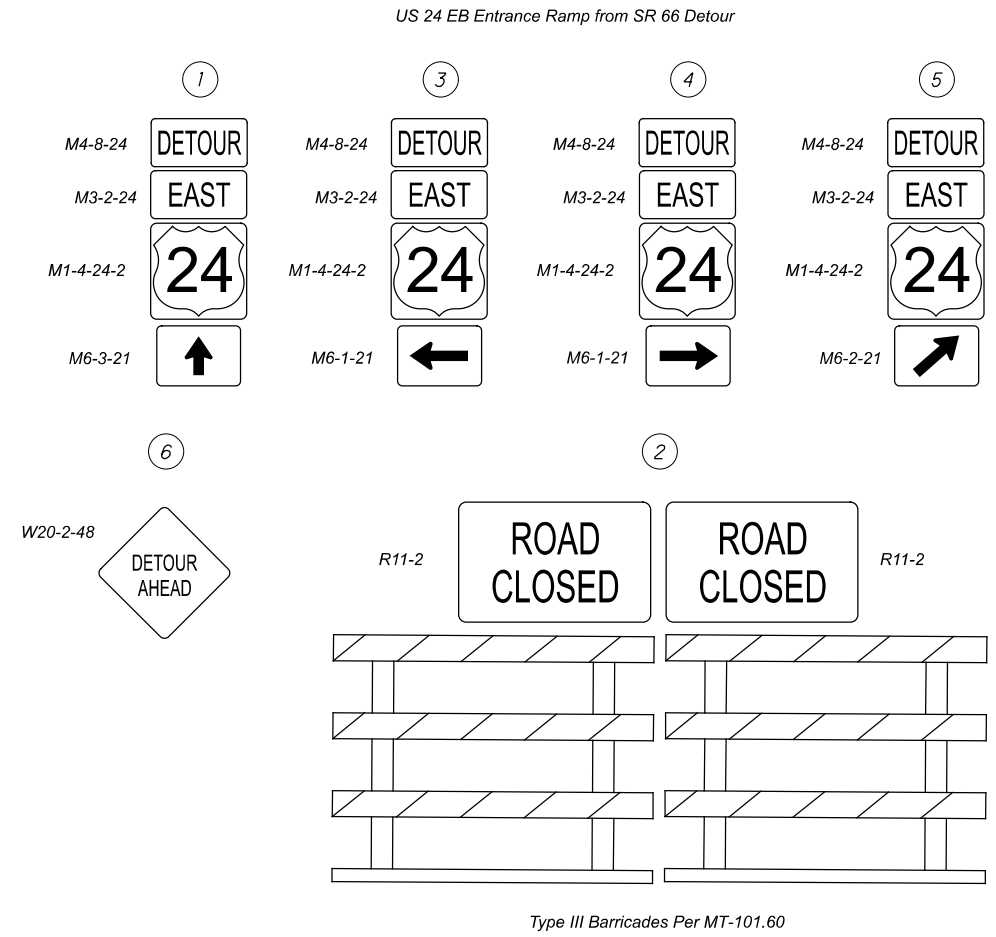
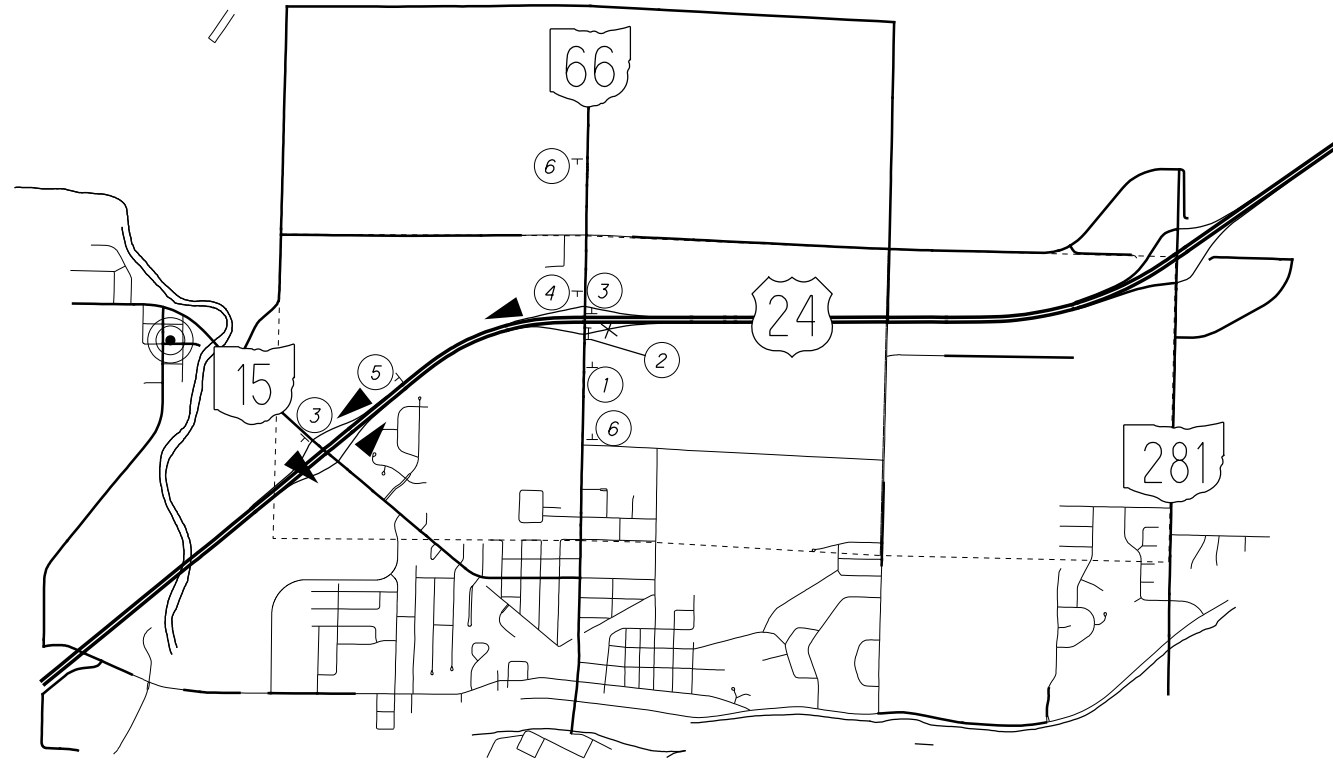


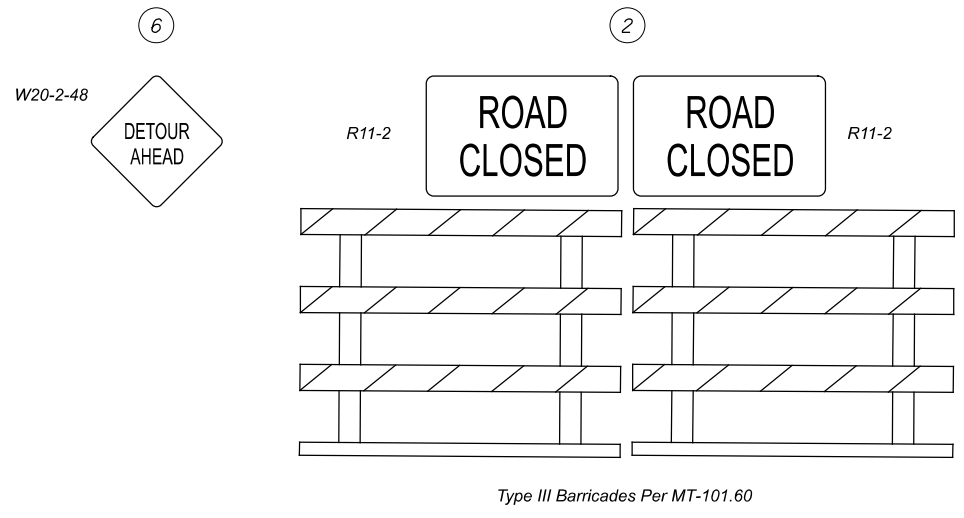
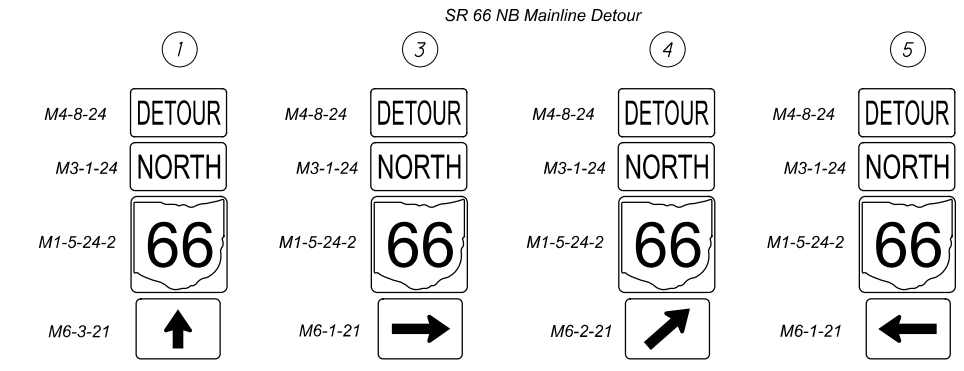
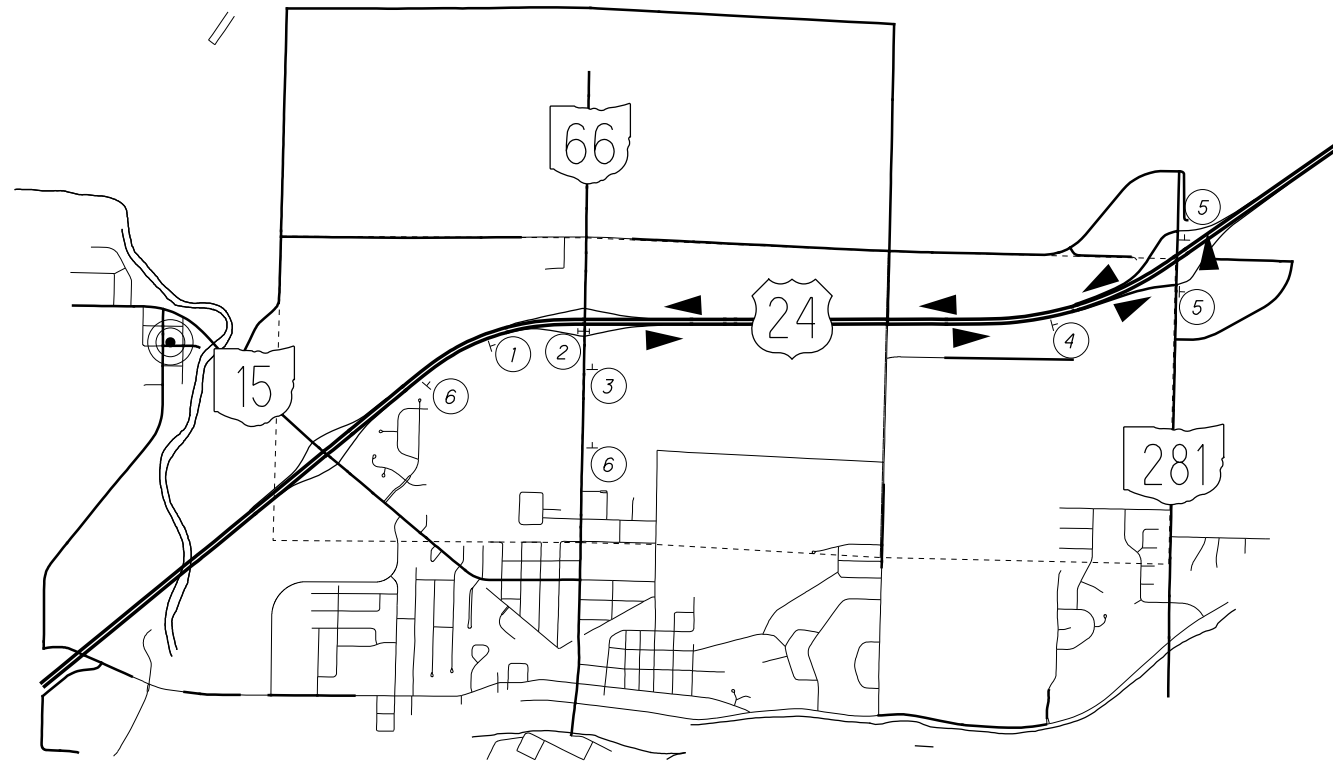


Type III Barricades Per MT-101.60



Type III Barricades Per MT-101.60





The 2 detours shown on this sheet will be set up at the same time.

