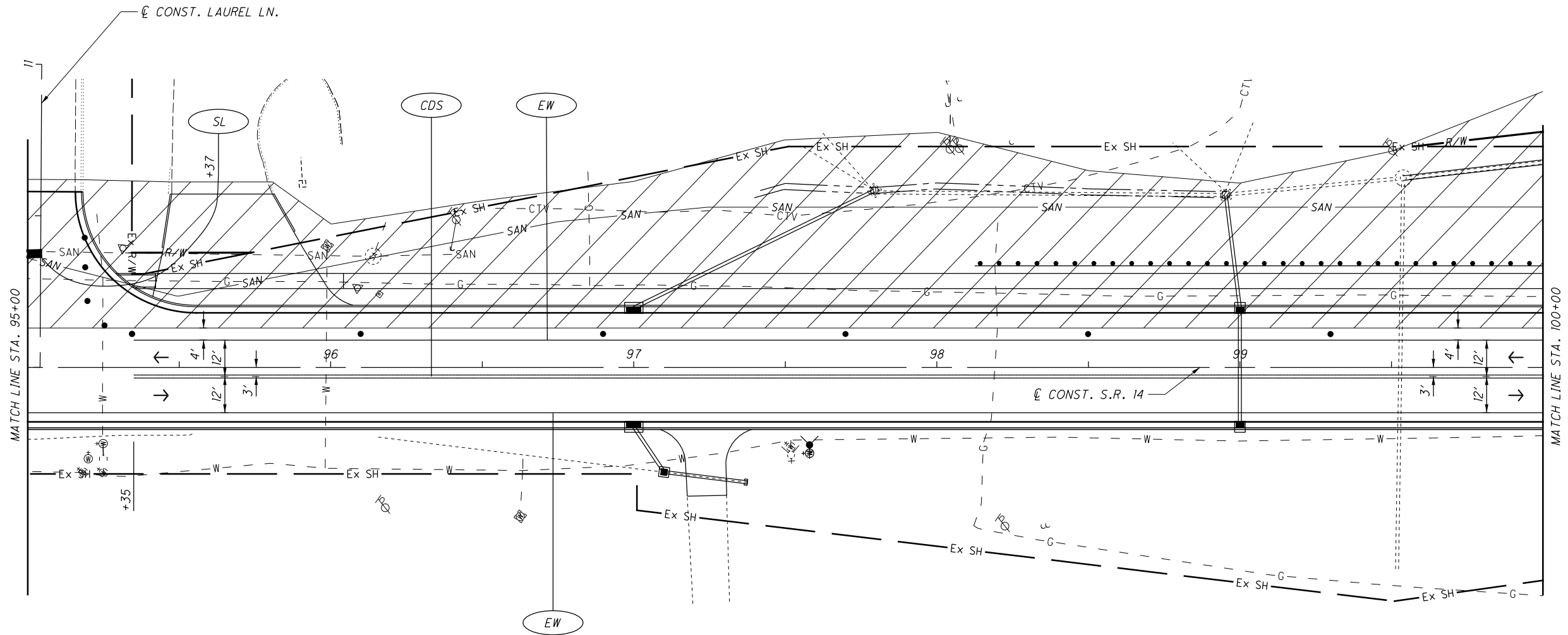


O:\2017\2017114\POR\02234\Design\M01\Sheets\02234mp065.dgn Design 2/4/2021 3:48:42 PM mthomas



CALCULATED	SLB	CHECKED	LOB

0 20 40
HORIZONTAL SCALE IN FEET

MAINTENANCE OF TRAFFIC PLAN - PHASE 3
STA. 95+00 TO STA. 100+00

POR-14-3.65

- MAINTENANCE OF TRAFFIC NOTES:**
1. THE CONTRACTOR SHALL COVER OR REMOVE EXISTING CONFLICTING SIGNING AND COVER OR REMOVE EXISTING CONFLICTING PAVEMENT MARKINGS PRIOR TO CONSTRUCTION.
 2. THE CONTRACTOR SHALL MAINTAIN ACCESS TO ALL RESIDENTIAL AND COMMERCIAL PROPERTIES AT ALL TIMES.
 3. FOR MAINTENANCE OF TRAFFIC LEGEND, SEE SHEET 27.

#FILES 9
 #DAYS 9
 #TIMES 9
 2017114\17\2017114\POR\102234\Design\Roadway\Sheets\102234gg001.dgn Design 2/4/2021 3:51:20 PM mthomas

SHEET NUM.												PART.	ITEM	ITEM	GRAND	UNIT	DESCRIPTION	SEE SHEET NO.	CALCULATED	MJT	CHECKED	CJT
OFFICE CALCS	12	13	14	15	75	78	79	81	176	184	191	234	01/NHS/PV	EXT	TOTAL							
	LS												LS	201	11000	LS		ROADWAY				
						3							3	202	20010	3	EACH	CLEARING AND GRUBBING				
6,514		525							1,185				8,224	202	23000	8,224	SY	HEADWALL REMOVED				
903													903	202	23500	903	SY	PAVEMENT REMOVED				
					496								496	202	30000	496	SF	WEARING COURSE REMOVED				
					188				607				795	202	32000	795	FT	WALK REMOVED				
					67								67	202	32500	67	FT	CURB REMOVED				
						1,732							1,732	202	35100	1,732	FT	CURB AND GUTTER REMOVED				
										651			651	202	35700	651	FT	PIPE REMOVED, 24" AND UNDER				
																		ASBESTOS PIPE REMOVED				
					1,107								1,107	202	38000	1,107	FT	GUARDRAIL REMOVED				
					53								53	202	53100	53	EACH	MAILBOX REMOVED				
						5							5	202	58100	5	EACH	CATCH BASIN REMOVED				
						66							66	SPECIAL	20270000	66	FT	FILL AND PLUG EXISTING CONDUIT (12" DIAMETER)			12	
						85							85	SPECIAL	20270000	85	FT	FILL AND PLUG EXISTING CONDUIT (18" DIAMETER)			12	
		500											500	SPECIAL	20270110	500	FT	PIPE CLEANOUT, 24" AND UNDER			13	
					113								113	202	75201	113	FT	FENCE REMOVED FOR REUSE, AS PER PLAN			15	
					4								4	202	75255	4	EACH	GATE REMOVED FOR REUSE, AS PER PLAN			15	
					7								7	202	98100	7	EACH	REMOVAL MISC.: POST REMOVED			12	
30							1,666		1,558				3,254	203	10000	3,254	CY	EXCAVATION				
			600										600	203	10000	600	CY	EXCAVATION (FOR PAVEMENT REPAIR)				
							14,313						14,313	203	20000	14,313	CY	EMBANKMENT				
11,559									5,473				17,032	204	10000	17,032	SY	SUBGRADE COMPACTION				
							2,006						2,006	204	13000	2,006	CY	EXCAVATION OF SUBGRADE				
							2,006						2,006	204	30011	2,006	CY	GRANULAR MATERIAL, TYPE B, AS PER PLAN			14	
	6						5,993						6	204	45000	6	hour	PROOF ROLLING				
													5,993	204	50000	5,993	SY	GEOTEXTILE FABRIC				
					700								700	606	15100	700	FT	GUARDRAIL, TYPE MGS WITH LONG POSTS				
					2								2	606	26150	2	EACH	ANCHOR ASSEMBLY, MGS TYPE E (MASH 2016)				
					2								2	606	26550	2	EACH	ANCHOR ASSEMBLY, MGS TYPE T				
					36,909								36,909	608	10000	36,909	SF	4" CONCRETE WALK				
				250									250	608	10001	250	SF	4" CONCRETE WALK, AS PER PLAN			15	
					2,389								2,389	608	13000	2,389	SF	6" CONCRETE WALK				
					5,199								5,199	608	15000	5,199	SF	8" CONCRETE WALK				
											889		889	608	52000	889	SF	CURB RAMP				
												19	19	623	38500	19	EACH	MONUMENT ASSEMBLY				
												18	18	623	40520	18	EACH	RIGHT-OF-WAY MONUMENT				
					41								41	SPECIAL	69050100	41	EACH	MAILBOX SUPPORT SYSTEM, SINGLE			14	
					3								3	SPECIAL	69050200	3	EACH	MAILBOX SUPPORT SYSTEM, DOUBLE			14	
					1								1	SPECIAL	69050300	1	EACH	MAILBOX SUPPORT SYSTEM, MULTIPLE			14	
					6								6	SPECIAL	69098000	6	EACH	PAPERBOX REMOVED AND RESET			15	
	LS												LS	SPECIAL	69098400	LS		PRECONSTRUCTION VIDEO TAPING			12	
																		EROSION CONTROL				
						15							15	601	32204	15	CY	ROCK CHANNEL PROTECTION, TYPE C WITH GEOTEXTILE FABRIC				
		2											2	659	00100	2	EACH	SOIL ANALYSIS TEST				
		2,731											2,731	659	00300	2,731	CY	TOPSOIL				
		24,604											24,604	659	10000	24,604	SY	SEEDING AND MULCHING				
		1,230											1,230	659	14000	1,230	SY	REPAIR SEEDING AND MULCHING				
		1,230											1,230	659	15000	1,230	SY	INTER-SEEDING				
		3.57											3.57	659	20000	3.57	TON	COMMERCIAL FERTILIZER				
		5.08											5.08	659	31000	5.08	ACRE	LIME				
		136											136	659	35000	136	MGAL	WATER				
								LS					LS	832	15000	LS		STORM WATER POLLUTION PREVENTION PLAN				
								LS					LS	832	15002	LS		STORM WATER POLLUTION PREVENTION INSPECTIONS				
								LS					LS	832	15010	LS		STORM WATER POLLUTION PREVENTION INSPECTION SOFTWARE				
								163,789					163,789	832	30000	163,789	EACH	EROSION CONTROL				

GENERAL SUMMARY

POR-14-3.65

OFFICE CALCS	SHEET NUM.										PART. 01/NHS/PV	ITEM	ITEM EXT	GRAND TOTAL	UNIT	DESCRIPTION	SEE SHEET NO.
	12	13	14	75	78	79	176										
																DRAINAGE	
					2.6						2.6	602	20000	2.6	CY	CONCRETE MASONRY	
	50										50	605	05200	50	FT	4" UNCLASSIFIED PIPE UNDERDRAINS	
						12,222					12,222	605	06020	12,222	FT	4" BASE PIPE UNDERDRAINS WITH GEOTEXTILE FABRIC	
	50										50	611	00406	50	FT	4" CONDUIT, TYPE F	
						530					530	611	00410	530	FT	4" CONDUIT, TYPE F FOR UNDERDRAIN OUTLET	
					5						5	611	01100	5	FT	6" CONDUIT, TYPE C, 707.33	
					5,538						5,538	611	04400	5,538	FT	12" CONDUIT, TYPE B	
					207						207	611	04400	207	FT	12" CONDUIT, TYPE B, 706.02	
					606						606	611	04600	606	FT	12" CONDUIT, TYPE C	
					10						10	611	04600	10	FT	12" CONDUIT, TYPE C, 707.33	
					124						124	611	04900	124	FT	12" CONDUIT, TYPE D	
					1,643						1,643	611	05900	1,643	FT	15" CONDUIT, TYPE B	
					10						10	611	05900	10	FT	15" CONDUIT, TYPE B, 706.02	
					58						58	611	06100	58	FT	15" CONDUIT, TYPE C	
					10						10	611	06100	10	FT	15" CONDUIT, TYPE C, 706.02	
					369						369	611	07400	369	FT	18" CONDUIT, TYPE B	
					260						260	611	07400	260	FT	18" CONDUIT, TYPE B, 706.02	
					206						206	611	07600	206	FT	18" CONDUIT, TYPE C	
					88						88	611	10200	88	FT	24" CONDUIT, TYPE A	
	20										20	611	97400	20	FT	CONDUIT, MISC.: TYPE B FOR DRAINAGE DISCHARGE CONTINUANCE	10
	20										20	611	97400	20	FT	CONDUIT, MISC.: TYPE C FOR DRAINAGE DISCHARGE CONTINUANCE	10
	20										20	611	97400	20	FT	CONDUIT, MISC.: TYPE E FOR DRAINAGE DISCHARGE CONTINUANCE	10
	20										20	611	97400	20	FT	CONDUIT, MISC.: TYPE F FOR DRAINAGE DISCHARGE CONTINUANCE	10
					7						7	611	98150	7	EACH	CATCH BASIN, NO. 3	
					44						44	611	98180	44	EACH	CATCH BASIN, NO. 3A	
					9						9	611	98370	9	EACH	CATCH BASIN, NO. 6	
					21						21	611	98470	21	EACH	CATCH BASIN, NO. 2-2B	
					3						3	611	98630	3	EACH	CATCH BASIN ADJUSTED TO GRADE	
					4						4	611	99574	4	EACH	MANHOLE, NO. 3	
					1						1	611	99582	1	EACH	MANHOLE, NO. 3 WITH 90" BASE I.D. AND 8" WEIR	
					1						1	611	99654	1	EACH	MANHOLE ADJUSTED TO GRADE	
					2						2	611	99660	2	EACH	MANHOLE RECONSTRUCTED TO GRADE	
	2										2	611	99720	2	EACH	INSPECTION WELL	
	2,000										2,000	SPECIAL	61199820	2,000	LB	MISCELLANEOUS METAL	13
					1						1	895	10020	1	EACH	MANUFACTURED WATER QUALITY STRUCTURE, TYPE 2	
																PAVEMENT	
615		3,000	1,700					1,492			1,700	251	01000	1,700	SY	PARTIAL DEPTH PAVEMENT REPAIR (44I)	
			2,000								5,107	252	01500	5,107	FT	FULL DEPTH PAVEMENT SAWING	
			1,000								2,000	252	01500	2,000	FT	FULL DEPTH PAVEMENT SAWING (FOR PAVEMENT REPAIR)	
											1,000	253	01000	1,000	SY	PAVEMENT REPAIR	
35,580											35,580	254	01000	35,580	SY	PAVEMENT PLANING, ASPHALT CONCRETE (3.25" MAX.)	
1,035		100									1,135	301	46000	1,135	CY	ASPHALT CONCRETE BASE, PG64-22	
2,261		100						1,018			3,379	304	20001	3,379	CY	AGGREGATE BASE, AS PER PLAN	13
			600								600	304	20001	600	CY	AGGREGATE BASE, AS PER PLAN (FOR PAVEMENT REPAIR)	14
								85			85	407	10000	85	GAL	TACK COAT	
5,479											5,479	407	20000	5,479	GAL	NON-TRACKING TACK COAT	
69											69	441	50200	69	CY	ASPHALT CONCRETE INTERMEDIATE COURSE, TYPE 1, (448)	
							57				57	441	50401	57	CY	ASPHALT CONCRETE SURFACE COURSE, TYPE 1, (448), (DRIVEWAYS), AS PER PLAN	13
							75				75	441	50600	75	CY	ASPHALT CONCRETE INTERMEDIATE COURSE, TYPE 2, (448), (DRIVEWAYS)	
1,544											1,544	442	10001	1,544	CY	ASPHALT CONCRETE SURFACE COURSE, 12.5 MM, TYPE A (446), AS PER PLAN (PG70-22M)	13
1,777											1,777	442	10100	1,777	CY	ASPHALT CONCRETE INTERMEDIATE COURSE, 19 MM, TYPE A (446)	
369											369	451	13020	369	SY	8" REINFORCED CONCRETE PAVEMENT, CLASS QC IP WITH QC/OA	
								504			504	452	10010	504	SY	6" NON-REINFORCED CONCRETE PAVEMENT, CLASS QC IP	
								2,850			2,850	452	12010	2,850	SY	8" NON-REINFORCED CONCRETE PAVEMENT, CLASS QC IP	
					15,185						15,185	609	12000	15,185	FT	COMBINATION CURB AND GUTTER, TYPE 2	
					1,984						1,984	609	12001	1,984	FT	COMBINATION CURB AND GUTTER, TYPE 2, AS PER PLAN	14
											393	609	14000	393	FT	CURB, TYPE 2-A	
											579	609	26000	579	FT	CURB, TYPE 6	

GENERAL SUMMARY	CALCULATED MJT	CHECKED CJT
POR - 14 - 3.65		

#FILES 9
 #DATES 9
 #TIMES 9
 17\201714\POR\102234\Design\Roadway\Sheets\102234gg001.dgn Design 2/4/2021 3:51:36 PM mthomas

FILE \$ DATE \$ TIME \$
 8:00 2/4/2021 3:53:29 PM mthomas

REF. NO.	SHEET NO.	LOCATION	STATION		SIDE	202 PIPE REMOVED, 24" AND UNDER	601 ROCK CHANNEL PROTECTION, TYPE C WITH GEOTEXTILE FABRIC	602 CONCRETE MASONRY	611 12" CONDUIT, TYPE B	611 12" CONDUIT, TYPE B, 706.02	611 12" CONDUIT, TYPE C	611 12" CONDUIT, TYPE D	611 15" CONDUIT, TYPE B	611 15" CONDUIT, TYPE B, 706.02	611 15" CONDUIT, TYPE C	611 15" CONDUIT, TYPE C, 706.02	611 18" CONDUIT, TYPE B, 706.02	611 18" CONDUIT, TYPE C	611 CATCH BASIN ADJUSTED TO GRADE	611 CATCH BASIN, NO. 3	611 CATCH BASIN, NO. 3A	611 CATCH BASIN, NO. 6	611 CATCH BASIN, NO. 2-2B	611 MANHOLE, NO. 3													
			FROM	TO																					FT	CY	CY	FT	FT	FT	FT	FT	FT	FT	FT	FT	FT
P-45	90	S.R. 14	65+54.68	65+57.95	RT.	5									5																						
P-46	90	S.R. 14	65+57.95	65+61.52	RT.	6																															
P-47	90	S.R. 14	65+89.12	65+92.58	LT.	5								5																							
P-48	90	S.R. 14	65+92.58	66+05.95	LT.																																
P-49	90	S.R. 14	66+05.95	66+08.81	LT.																																
P-50	90	S.R. 14	66+05.95	68+50.00	LT.								244																								
P-50A	90	S.R. 14	67+02.00	67+34.00	RT.																																
P-51	90 - 91	S.R. 14	68+50.00	70+52.77	LT.									32																							
P-51A	90 - 91	S.R. 14	69+86.00	70+18.00	RT.																																
P-52	91	S.R. 14	70+52.77	70+68.00	LT.																																
P-53	91	S.R. 14	70+53.36	70+68.00	RT.																																
P-54	91	S.R. 14	70+68.00	70+68.00	LT./RT.																																
P-55	91	S.R. 14	70+68.00	72+75.00	RT.							207																									
P-56	91	S.R. 14	72+26.00	72+56.00	LT.																																
P-57	91	S.R. 14	72+75.00	72+77.73	RT.			0.21							11																						
P-58	91	S.R. 14	72+75.00	74+00.00	RT.																																
P-59	91	S.R. 14	74+00.00	74+00.00	LT.		13.33	0.21							18																						
P-60	91	S.R. 14	74+00.00	74+00.00	LT./RT.																																
P-61	91 - 92	S.R. 14	74+00.00	76+50.00	RT.																																
P-62	91	S.R. 14	74+40.00	74+71.00	LT.																																
P-63	92	S.R. 14	76+50.00	76+50.00	LT./RT.																																
P-64	92	S.R. 14	76+50.00	76+50.00	RT.																																
P-65	92	S.R. 14	79+15.00	79+23.00	LT.									10																							
P-65A	92	S.R. 14	79+23.00	79+25.00	LT.																																
P-66	92	S.R. 14	79+25.00	79+25.00	LT./RT.																																
P-67	92 - 93	S.R. 14	79+25.00	81+30.00	LT.																																
P-68	93	S.R. 14	81+30.00	81+30.00	LT.																																
P-69	93	S.R. 14	81+30.00	81+30.00	LT./RT.																																
P-69A	93	S.R. 14	81+30.00	84+50.00	LT.																																
P-70	93	S.R. 14	84+50.00	85+00.00	LT./RT.																																
P-71	94	S.R. 14	85+00.00	87+55.00	RT.																																
P-72	94	S.R. 14	87+35.00	87+50.00	LT.																																
P-73	94	S.R. 14	87+50.00	87+55.00	LT./RT.																																
P-74	94	S.R. 14	87+55.00	89+00.00	RT.																																
P-75	94 - 95	S.R. 14	89+00.00	90+50.00	RT.																																
P-76	95	S.R. 14	90+50.00	90+50.00	LT.																																
P-77	95	S.R. 14	90+50.00	90+50.00	LT./RT.																																
P-78	95	S.R. 14	90+50.00	93+00.00	RT.																																
P-79	95	S.R. 14	93+00.00	93+00.00	LT./RT.																																
P-80	95	S.R. 14	93+00.00	93+55.01	RT.			0.33																													
P-81	96	S.R. 14	97+00.00	97+79.42	LT.																																
P-82	96	S.R. 14	97+00.00	97+10.00	RT.																																
P-83	96	S.R. 14	97+10.00	97+38.00	RT.			0.21																													
P-84	96	S.R. 14	98+95.35	99+00.00	LT.																																
P-85	96	S.R. 14	99+00.00	99+00.00	LT./RT.																																
P-86	96 - 97	S.R. 14	99+53.90	101+02.03	LT.			0.33																													
P-87	97 - 98	S.R. 14	103+40.00	107+00.00	RT.																																
P-88	98	S.R. 14	107+00.00	107+00.00	LT./RT.																																
P-89	98	S.R. 14	107+00.00	109+65.00	RT.																																
P-90	98	S.R. 14	109+65.00	109+65.00	LT./RT.																																
SUBTOTALS CARRIED TO SHEET NO. 78						16	13.33	1.29	2566	207	299	124	487	10	43	10	250	206	1	5	23	1	8	2													

CALCULATED
 MJT
 CHECKED
 CJT

DRAINAGE SUBSUMMARY

POR-14-3.65

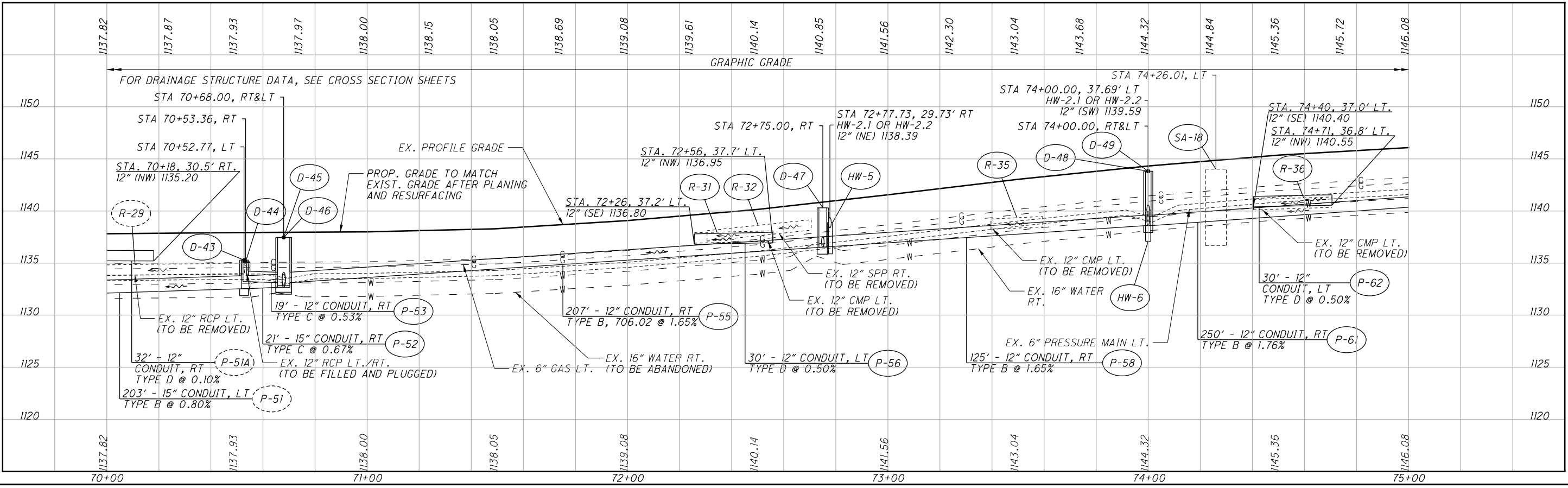
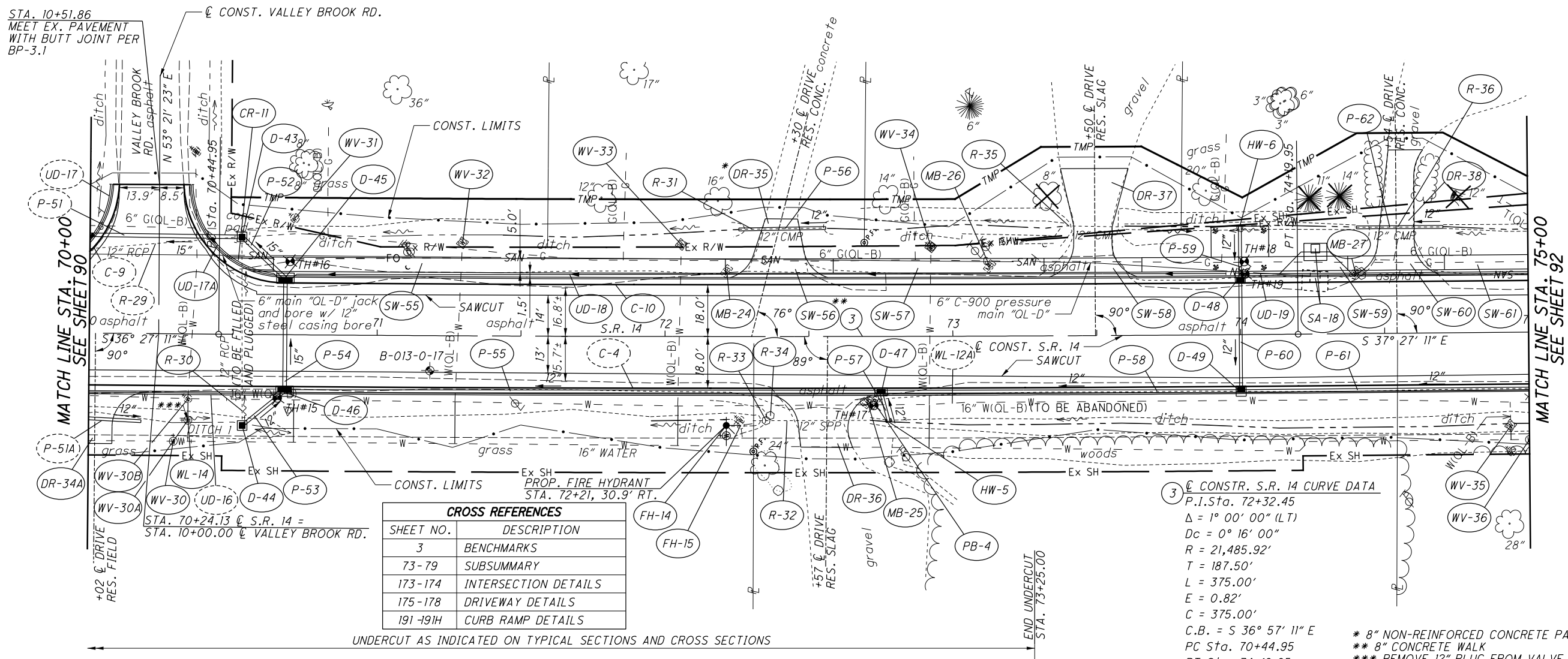
#FILES 5
 #DATES 5
 #TIMES 5
 2/4/2021 3:54:59 PM mthomas

REF. NO.	SHEET NO.	LOCATION	STATION		SIDE	BENDS AND BRANCHES FOR INFORMATION ONLY			
			FROM	TO		4" BASE PIPE UNDERDRAINS WITH GEOTEXTILE FABRIC	4" CONDUIT, TYPE F FOR UNDERDRAIN OUTLET	BENDS AND BRANCHES	
								4" X 45° BEND	4" X 4" TEE
					FT	FT	EACH	EACH	
UD-1	82 - 83	S.R. 14	27+18.79	30+20.00	LT.	291	10	1	
UD-1A	82 - 83	S.R. 14	27+96.42	30+20.00	RT.	212	10	1	
UD-2	83	S.R. 14	30+20.00	32+45.00	LT.	215	10	1	
UD-2A	83	S.R. 14	30+20.00	32+45.00	RT.	215	10	1	
UD-3	83 - 84	S.R. 14	32+50.00	35+65.00	LT.	295	20	2	
UD-4	83 - 84	S.R. 14	32+50.00	35+65.00	RT.	295	20	2	
UD-5	84 - 85	S.R. 14	35+70.00	43+50.00	LT.	773	10	1	
UD-6	85	S.R. 14	40+43.28	43+50.00	RT.	295	10	1	
UD-7	85	S.R. 14	43+55.00	44+50.00	LT.	85	10	1	
UD-7A	85 - 86	S.R. 14	44+55.00	45+91.87	LT.	129	10	5	
UD-8	86	S.R. 14	45+91.87	48+50.00	LT.	247	10	1	
UD-9	86 - 88	S.R. 14	48+55.00	60+00.00	LT.	1128	20	2	
UD-10	87	S.R. 14	53+00.00	58+75.00	RT.	550	20	2	
UD-11	89	S.R. 14	60+05.00	61+65.00	LT.	150	10	1	
UD-12	89	S.R. 14	61+70.00	63+00.00	LT.	120	10	1	
UD-13	89	S.R. 14	63+05.00	64+54.00	LT.	147	10		1
UD-14	89	S.R. 14	64+54.00	64+62.32	LT.	15	10		
UD-15	89 - 90	S.R. 14	64+86.91	65+92.58	LT.	112	10	1	
UD-16	90 - 91	S.R. 14	65+57.95	70+68.00	RT.	487	20	2	
UD-17	90 - 91	S.R. 14	65+92.58	70+06.95	LT.	420	10	1	
UD-17A	91	S.R. 14	70+35.55	70+68.00	LT.	38	10	1	
UD-18	91	S.R. 14	70+68.00	73+95.00	LT.	317	10	1	
UD-19	91 - 92	S.R. 14	74+00.00	76+45.00	LT.	235	10	1	
UD-20	92	S.R. 14	76+50.00	79+10.00	LT.	250	10	1	
UD-21	92	S.R. 14	76+50.00	79+25.00	RT.	255	20	2	
UD-22	92	S.R. 14	79+15.00	79+43.08	LT.	33	10	1	
UD-23	92 - 93	S.R. 14	79+30.00	81+30.00	RT.	190	10	1	
UD-24	92 - 93	S.R. 14	79+95.26	81+30.00	LT.	139	10	1	
UD-25	93	S.R. 14	81+35.00	84+50.00	LT.	305	10	1	
UD-26	93	S.R. 14	81+35.00	85+00.00	RT.	356	10	1	
UD-27	93 - 94	S.R. 14	84+55.00	87+50.00	LT.	285	10	1	
UD-28	94	S.R. 14	86+07.91	87+55.00	RT.	138	10	1	
UD-29	94 - 95	S.R. 14	87+55.00	90+50.00	LT.	285	10	1	
UD-30	95	S.R. 14	90+55.00	93+00.00	LT.	235	10	1	
UD-31	95	S.R. 14	93+00.00	94+90.54	LT.	205	10	1	
UD-32	95 - 96	S.R. 14	93+05.00	97+00.00	RT.	385	10	1	
UD-33	96	S.R. 14	95+18.83	97+00.00	LT.	190	20	1	
UD-34	96	S.R. 14	97+00.00	98+95.00	LT.	185	10	1	
UD-35	96	S.R. 14	97+00.00	98+95.00	RT.	185	10	1	
UD-36	96 - 98	S.R. 14	99+00.00	107+00.00	LT.	780	20	2	
UD-37	96 - 97	S.R. 14	99+00.00	103+40.00	RT.	420	20	2	
UD-38	98	S.R. 14	107+05.00	109+65.00	LT.	250	10	1	
UD-39	98 - 99	S.R. 14	109+70.00	111+00.00	LT.	120	10	1	
UD-40	99	S.R. 14	111+05.00	113+75.00	LT.	260	10	1	
SUBTOTALS						12222	530		
TOTALS CARRIED TO GENERAL SUMMARY						12222	530		

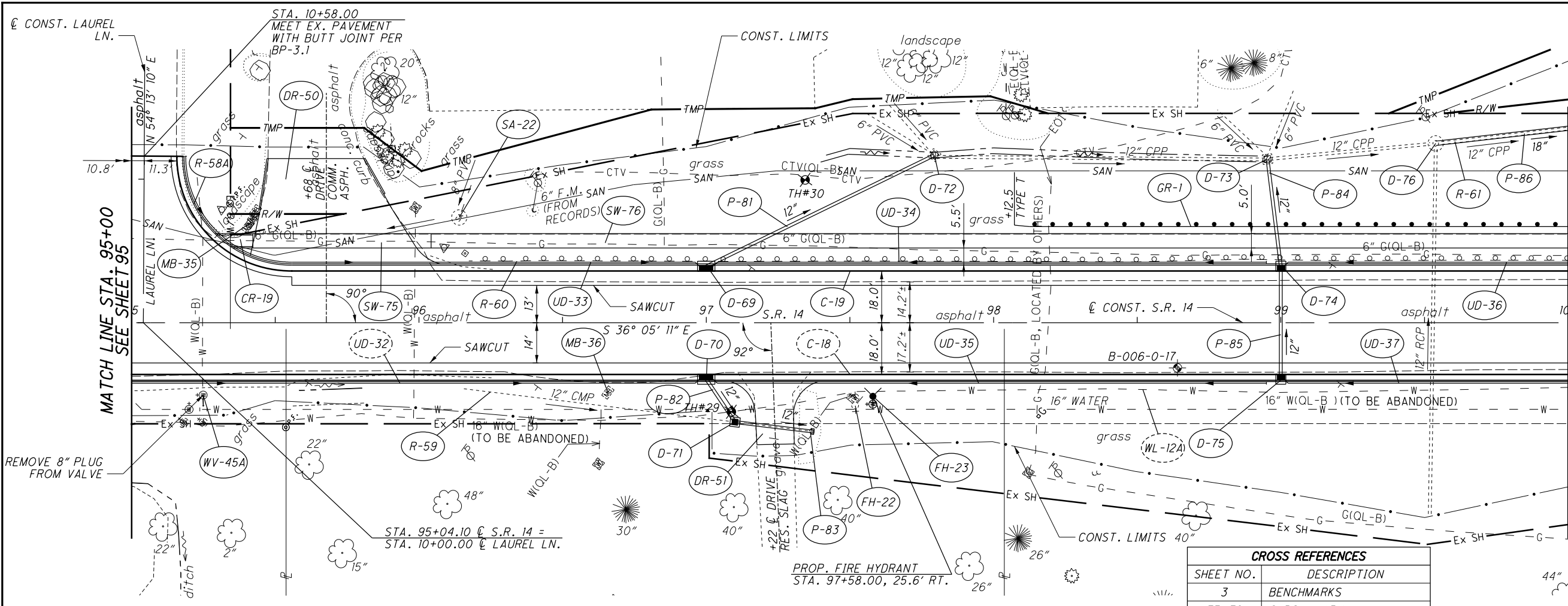
SHEET NO.	203	203	204	204	204	659
	EXCAVATION	EMBANKMENT	EXCAVATION OF SUBGRADE	GRANULAR MATERIAL, TYPE B, AS PER PLAN	GEOTEXTILE FABRIC	SEEDING AND MULCHING
104		4				31
105	39	16	41	41	123	145
106	43	18	53	53	164	150
107	53	9	64	64	197	81
108	24	4	30	30	89	42
109	62	40	84	84	249	205
110	43	65	56	56	166	267
111	71	47	84	84	249	312
112	41	36	59	59	175	225
113	24	81	62	62	181	297
114	17	41	32	32	97	133
115	31	17	66	66	200	97
116	42	282	99	99	300	664
117	67	266	99	99	297	720
118	63	105	96	96	288	458
119	13	39	31	31	94	119
120	37	65	62	62	186	217
121	40	94	60	60	178	309
122	33	236	90	90	267	348
123	36	115	60	60	178	291
124	29	112	60	60	178	297
125	45	148	90	90	267	345
126	52	178	90	90	267	466
127	33	98	60	60	178	295
128	74	276	30	30	89	703
129	56	116				353
130	59	77				311
131	30	62				256
132	81	163				673
133	53	320				819
134	70	156				530
135	64	116				402
136	61	238				428
137	62	301				553
138	75	331	35	35	108	757
139	58	79	79	79	238	311
140	31	58	60	60	178	214
141	35	73	37	37	107	278
142	48	199				406
143	54	196				453
144	52	172				475
145	34	120				382
146	96	380	40	40	118	934
147	66	217	132	132	391	622
148	31	74	65	65	196	320
149	53	92				347
150	41	94				438
151	69	286				739
152	64	515				1056
153	63	418				882
SUBTOTALS CARRIED TO RIGHT COLUMNS						
	2418	7245	2006	2006	5993	20156

SHEET NO.	203	203	204	204	204	659
	EXCAVATION	EMBANKMENT	EXCAVATION OF SUBGRADE	GRANULAR MATERIAL, TYPE B, AS PER PLAN	GEOTEXTILE FABRIC	SEEDING AND MULCHING
154	19	18				89
155	56	331				583
156	100	752				1147
157	40	1589				1445
158	26	959				636
159	40	612				536
160	66	304				572
161	85	196				508
162	54	603				716
163	50	615				956
164	71	129				495
165	67	213				520
166	63	394				731
167	57	317				647
168	11	35				203
169						
170						65
171	1	1				97
SUBTOTALS						
	806	7068				9946
SUBTOTALS FROM LEFT COLUMNS						
	2418	7245	2006	2006	5993	20156
DEDUCT FOR DRIVEWAYS						
	-1558					-5473
SUBTOTALS THIS SHEET						
	1666	14313	2006	2006	5993	24629
TOTALS CARRIED TO SHEET NO. 13						
						24629
TOTALS CARRIED TO GENERAL SUMMARY						
	1666	14313	2006	2006	5993	

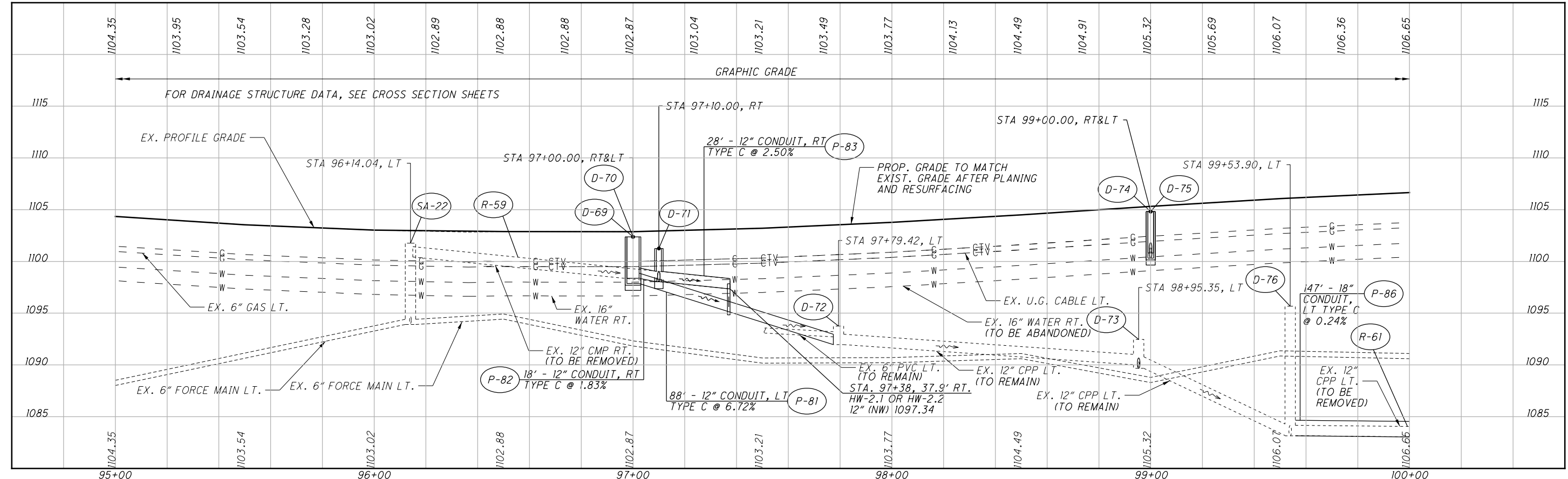
CALCULATED MJT CHECKED CJT
UNDERDRAIN & EARTHWORK SUBSUMMARY
POR-14-3.65
 79
 281



#FILES 5
 #DATES 5
 #TIMES 5
 BASE@17_2017114_POR\102234\Design\Roadway\Sheets\102234gp010.dgn Design 2/4/2021 3:58:50 PM mthomas



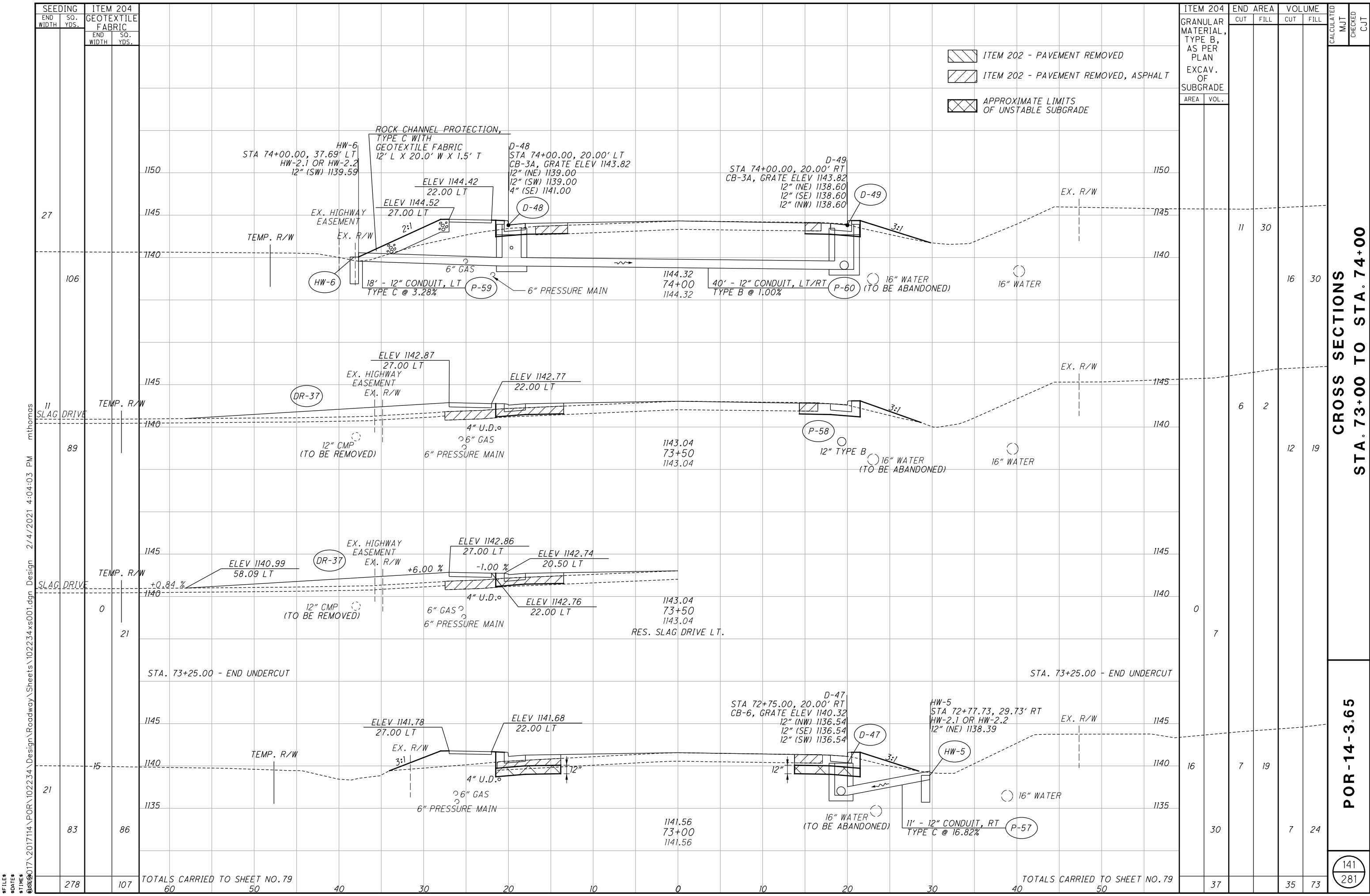
CROSS REFERENCES	
SHEET NO.	DESCRIPTION
3	BENCHMARKS
73-79	SUBSUMMARY
173-174	INTERSECTION DETAILS
175-178	DRIVEWAY DETAILS
191-191H	CURB RAMP DETAILS



**PLAN AND PROFILE
STA. 95+00 TO STA. 100+00**

POR-14-3.65

9FILES
 5DAIES
 5TIMES
 5BASE@17_2017114_POR\102234_Design\Roadway\Sheets\102234gp015.dgn Design 2/4/2021 4:00:46 PM mthomas



- ITEM 202 - PAVEMENT REMOVED
- ITEM 202 - PAVEMENT REMOVED, ASPHALT
- APPROXIMATE LIMITS OF UNSTABLE SUBGRADE

ITEM 204	END AREA		VOLUME		CALCULATED	CHECKED
	CUT	FILL	CUT	FILL		
ITEM 204 GRANULAR MATERIAL, TYPE B, AS PER PLAN EXCAV. OF SUBGRADE						
AREA						
VOL.						
	11	30	16	30		
	6	2	12	19		
	0	7	0	7		
	16	7	16	19		
	30	7	30	24		
TOTALS CARRIED TO SHEET NO. 79	37		35	73		

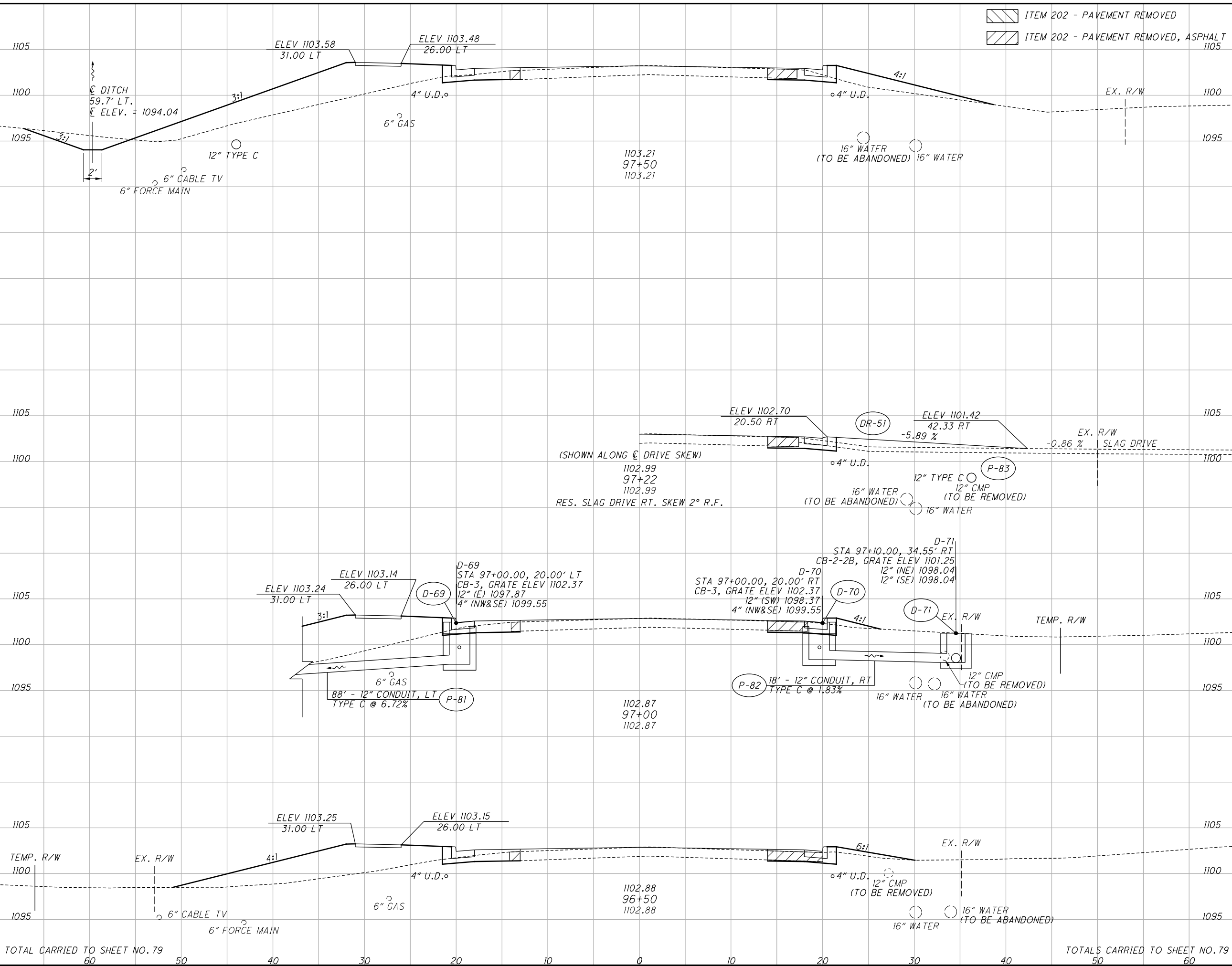
**CROSS SECTIONS
STA. 73+00 TO STA. 74+00**

POR-14-3.65

141
281

#FILES 0
 #DATES 0
 #TIMES 0
 #BASE 0
 2017114\POR\102234\Design\Roadway\Sheets\102234xs001.dgn Design 2/4/2021 4:07:25 PM mthomas

SEEDING	END		SO.	YDS.
	WIDTH			
66	242			
21	169			
40	172			
583				



ITEM 202 - PAVEMENT REMOVED
 ITEM 202 - PAVEMENT REMOVED, ASPHALT

END	AREA		VOLUME		CALCULATED	MUT	CHECKED	CJT
	CUT	FILL	CUT	FILL				
1105								
1100	20	100						
1095			28	142				
1105								
1100								
1105								
1100	10	53						
1095			16	111				
1105								
1100								
1095								
1105								
1100	7	67						
1095			12	78				
TOTALS CARRIED TO SHEET NO. 79	56	331						

CROSS SECTIONS
 STA. 96+50 TO STA. 97+50

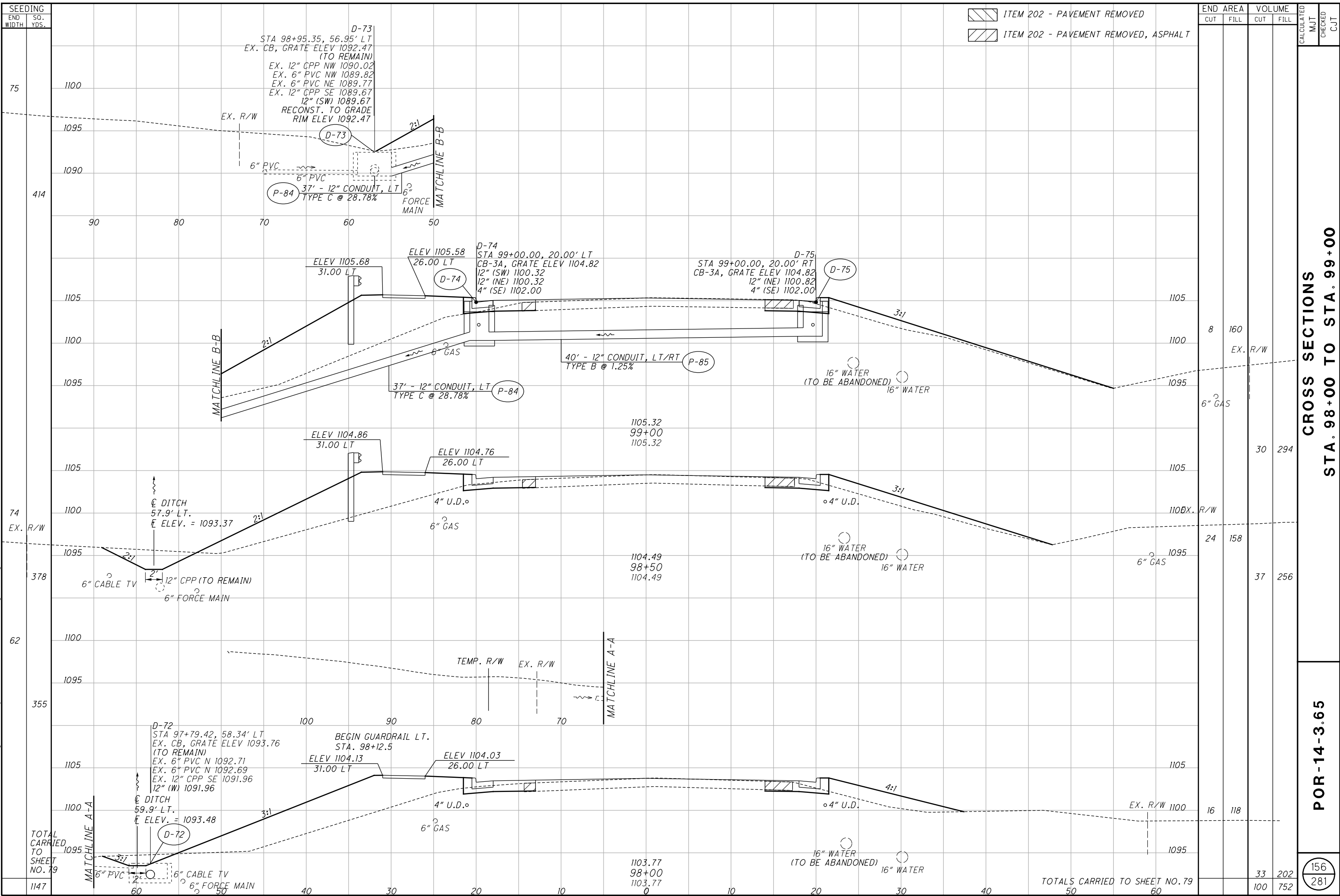
POR-14-3.65

155
 281

TOTAL CARRIED TO SHEET NO. 79

TOTALS CARRIED TO SHEET NO. 79

#FILES 0
 #DATES 0
 #TIMES 0
 2/17/2017 11:43 AM
 2017114_POR\102234\Design\Roadway\Sheets\102234xs001.dgn Design 2/4/2021 4:07:43 PM mthomas



END CUT	AREA FILL	VOLUME CUT	VOLUME FILL	CALCULATED	MUT	CHECKED	CJT
8	160						
30	294						
24	158						
37	256						
16	118						
33	202						
100	752						

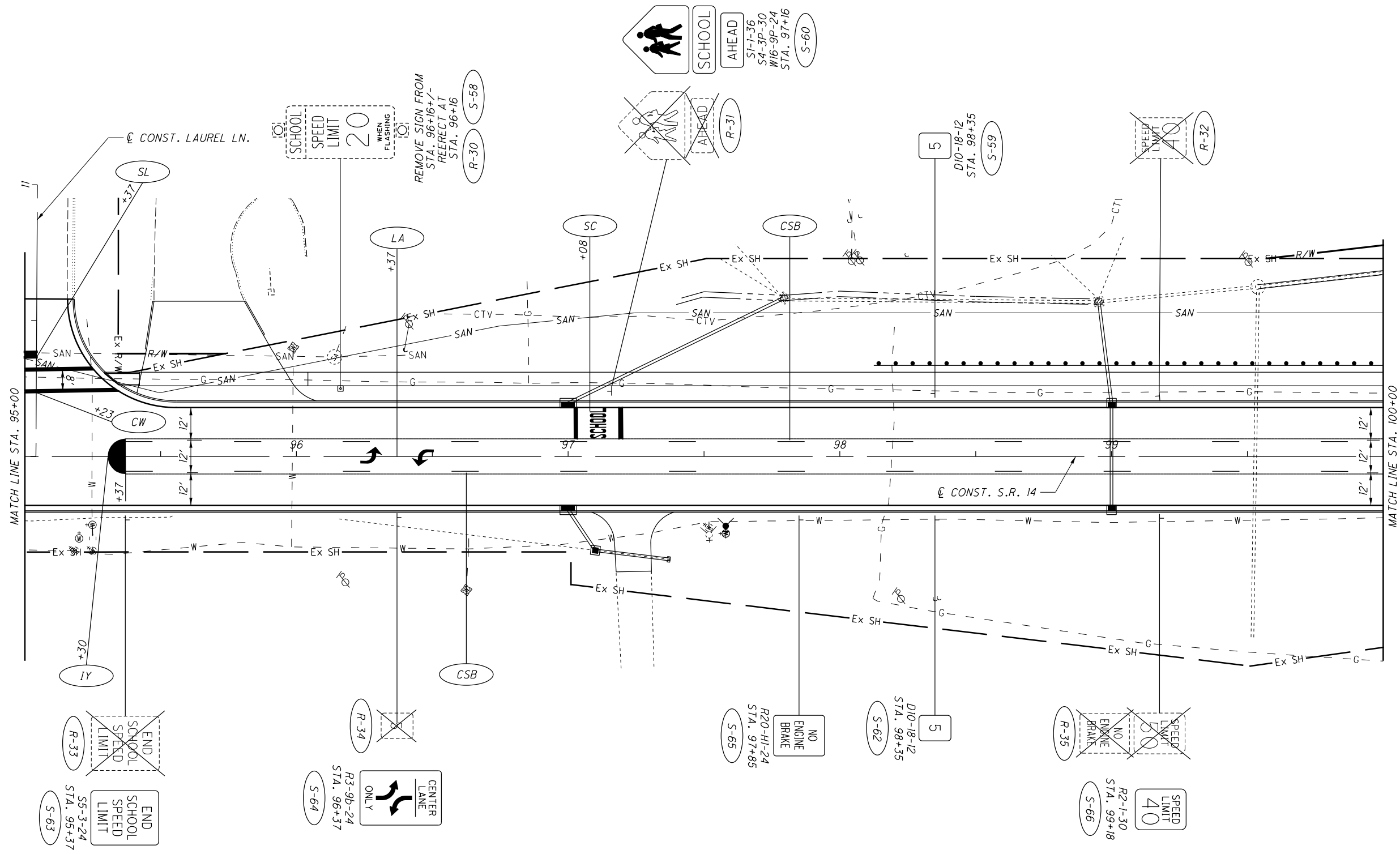
CROSS SECTIONS
STA. 98+00 TO STA. 99+00

POR-14-3.65

156
 281

TOTALS CARRIED TO SHEET NO. 79

REFERENCE NO.	SHEET NO.	STATION	SIDE	DRIVE TYPE	DRIVE ANGLE (DEGREES)	EXISTING APRON MATERIAL	EXISTING DRIVE MATERIAL	PROPOSED APRON MATERIAL	PROPOSED DRIVE MATERIAL	APRON LENGTH "L1"	DRIVE LENGTH "L2"	WIDTH AT CURB "WC"	WIDTH OF DRIVE "WD"	"R1" (LEFT SIDE RADIUS OF DRIVE LOOKING FROM CL)	"R2" (RIGHT SIDE RADIUS OF DRIVE LOOKING FROM CL)	APRON AREA	DRIVE AREA	TOTAL DRIVE AREA + APRON AREA	202	202	203	204	252	304	304	304	407	441	441	452	452	609	609																					
										FT	FT	FT	FT	FT	FT	SF	SF	SF	SY	FT	CY	SY	FT	CY	CY	CY	GAL	CY	CY	SY	SY	FT	FT																					
DR-46	94	85+85	LT.	COMM.	90	ASPH.	ASPH.	CONC.	ASPH.	5.5	30.8	63.6	94.6	15.0	20.0	288.60	1788.54	2077.14																																				
DR-47	94	86+74	RT.	COMM.	90	ASPH.	ASPH.	CONC.	ASPH.	12.5	10.0	35.1	16.0	15.0	2.0	289.05	173.76	462.81																																				
DR-48	94	87+92	LT.	COMM.	90	AGG.	AGG.	CONC.	AGG.	5.5	6.5	50.2	24.5	15.0	15.0	220.45	174.19	394.64																																				
DR-49	94 - 95	89+85	RT.	COMM.	90	ASPH.	ASPH.	CONC.	ASPH.	29.3	11.7	106.5	35.8	35.0	35.0	1570.28	425.07	1995.35																																				
DR-50	96	95+68	LT.	COMM.	90	ASPH.	ASPH.	CONC.	ASPH.	5.5	26.2	66.5	33.2		15.0	321.11	1119.70	1440.81																																				
DR-51	96	97+22	RT.	RES.	92	AGG.	AGG.	CONC.	AGG.	10.9	11.0	30.4	13.0	12.0	12.0	196.53	144.47	341.00																																				
DR-52	97	100+91	RT.	COMM.	90	ASPH.	ASPH.	CONC.	ASPH.	37.6	17.5	120.4	31.6	50.0	50.0	2310.93	597.09	2908.02																																				
DR-53	97	102+18	RT.	COMM.	90	ASPH.	ASPH.	CONC.	ASPH.	12.1	2.6	37.7	15.1	15.0	15.0	270.11	40.68	310.79																																				
DR-54	97	103+75	RT.	COMM.	92	ASPH.	ASPH.	CONC.	ASPH.	12.3	5.4	35.9	8.6	15.0	20.0	228.69	51.02	279.71																																				
DR-55	98	107+36	RT.	COMM.	88	ASPH.	ASPH.	CONC.	ASPH.	20.4		41.9	10.9	20.0	20.0	375.50		375.50																																				
DR-56	98	109+92	LT.	RES.	90	ASPH.	FIELD	CONC.	AGG.	5.5	19.6	29.9	8.1	12.0	12.0	116.19	177.29	293.48																																				
DR-57	99	110+51	LT.	RES.	80	ASPH.	FIELD	CONC.	AGG.	5.6	23.1	29.2	7.6	12.0	12.0	112.44	217.79	330.23																																				
DR-58	99	111+42	LT.	RES.	90	ASPH.	FIELD	CONC.	AGG.	5.5	16.4	27.7	10.5	12.0	12.0	103.71	172.79	276.50																																				
DR-59	99	112+84	LT.	RES.	90	ASPH.	FIELD	CONC.	AGG.	10.0	35.8	32.3	10.0	15.0	15.0	189.36	358.28	547.64																																				
DR-60	99 - 100	114+88	LT.	RES.	90	ASPH.	FIELD	CONC.	AGG.	12.0	21.2	29.7	14.8	12.0		273.06	564.31	837.37																																				
SUB-TOTALS THIS SHEET																																																						
SUBTOTALS CARRIED FROM SHEET NO. 175																			1184.68	426.46	1078.69	4042.87	1246.20	442.78	279.50	19.47	58.91	41.24	52.06	394.33	2196.81	216.43	170.56																					
TOTALS																			1184.68	606.77	1557.91	5472.98	1492.00		1018.24		84.55	57.43	74.72	504.48	2849.56	370.18	170.56																					
TOTALS CARRIED TO THE GENERAL SUMMARY																			1185	607	1558	5473	1492		1018		85	57	75	504	2850	370	171																					



CALCULATED
DLS
CHECKED
TJR

0 20 40
HORIZONTAL
SCALE IN FEET

TRAFFIC CONTROL PLAN
STA. 95+00 TO STA. 100+00

POR-14-3.65

FOR TRAFFIC CONTROL LEGEND SEE SHEET 201.

PORTAGE COUNTY
STREETSBORO TOWNSHIP
RANGE 9 WEST, TOWNSHIP 4 NORTH
LOT 68
CONNECTICUT WESTERN RESERVE
CITY OF STREETSBORO

☉ R/W S.R. 14
P.I. Sta. 73+52.94
Δ = 1° 00' 00" (LT)
Dc = 0° 16' 00"
R = 21,485.66'
T = 187.50'
L = 374.99'
E = 0.82'
C = 374.99'
C.B. = S 36° 57' 25" E

SUBDIVISION OF BLOCKS A & B OF
VALLEY BROOK VILLAGE
P.B. 14, PG. 8

45
ELMER E. HEAD &
TIMOTHY W. HEAD
35-068-10-00-105.000
8720 S.R. 14
RESIDENTIAL

☉ CONST. S.R. 14
P.I. Sta. 72+32.45
Δ = 1° 00' 00" (LT)
Dc = 0° 16' 00"
R = 21,485.92'
T = 187.50'
L = 375.00'
E = 0.82'
C = 375.00'
C.B. = S 36° 57' 11" E

SUBDIVISION OF BLOCKS A & B OF
VALLEY BROOK VILLAGE
P.B. 14, PG. 8

47
LEONARD G. MILLER, JR.
& DEBORAH A. MILLER
35-068-10-00-106.000
8708 S.R. 14
RESIDENTIAL

DEER MEADOW SUBDIVISION NO. 1
P.B. 93, PG. 57

49
MARCELLUS MILLER &
STEPHANIE MILLER
35-068-20-00-001.000
1987 DEER MEADOW BLVD.
RESIDENTIAL

☉ R/W S.R. 14
P.I. Sta. 81+70.88
Δ = 1° 22' 00" (RT)
Dc = 0° 16' 00"
R = 21,485.66'
T = 256.26'
L = 512.50'
E = 1.53'
C = 512.48'
C.B. = S 36° 46' 25" E

☉ R/W S.R. 14
P.I. Sta. 80+50.40
Δ = 1° 22' 00" (RT)
Dc = 0° 16' 00"
R = 21,485.92'
T = 256.26'
L = 512.50'
E = 1.53'
C = 512.49'
C.B. = S 36° 46' 11" E

6" force main

MATCH LINE STA. 75+00
SEE SHEET 33

6" force main

MATCH LINE STA. 80+00
SEE SHEET 37

43
STEVE J. LENART, JR. & CATHERINE A. LENART
35-067-00-00-010.000
8725 S.R. 14
RESIDENTIAL

46
JEFFREY M. ALLEN
35-067-00-00-009.000
8707 S.R. 14
RESIDENTIAL

48
JEFF ALLEN
35-067-00-00-007.000
8693 S.R. 14
COMMERCIAL
(SALVAGE YARD)

46
JEFFREY ALLEN
35-067-00-00-006.000
S.R. 14
RESIDENTIAL

NOTE: ALL RIGHT OF WAY STATION VALUES ARE BASED ON THE CENTERLINE OF RIGHT OF WAY

* DENOTES ENCROACHMENT

REV. BY	DATE	DESCRIPTION
NLC	6/18/20	MARKED STUMP FOR REMOVAL ON 45-T
NLC	5/19/20	REMOVED 46-WD
NLC	1/13/20	PARCEL NUMBER FORMAT
NLC	10/16/19	CHANGED 46-WD1 TO 46-WD
DATE COMPLETED: 12/3/2018		

RIGHT OF WAY TOPO SHEET
STA. 75+00 TO STA. 80+00

PID NO. 102234

R/W DESIGNER NLC
R/W REVIEWER WCL

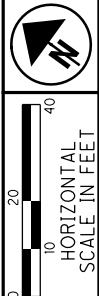
POR-14-3.65

35 / 52

264
281

#FILES#
#DATES#
#TIMES#
#USERS#

(A) 96+23.42 @ R/W S.R. 14 =
10+00.00 @ R/W LAUREL LANE



(56)
PORTAGE COUNTY
BOARD OF COMMISSIONERS
35-068-20-00-073.000
S.R. 14
MUNICIPAL

(55)
EUNICE S. HUFFMAN
35-067-00-00-004.001
S.R. 14
COMMERCIAL

(58)
OLIVER L. ALLEN II & CYNTHIA A. ALLEN
35-077-00-00-003.000
8540 S.R. 14
COMMERCIAL

PID NO.
102234

R/W DESIGNER
NLC

R/W REVIEWER
WCL

RIGHT OF WAY TOPO SHEET
STA. 95+00 TO STA. 100+00

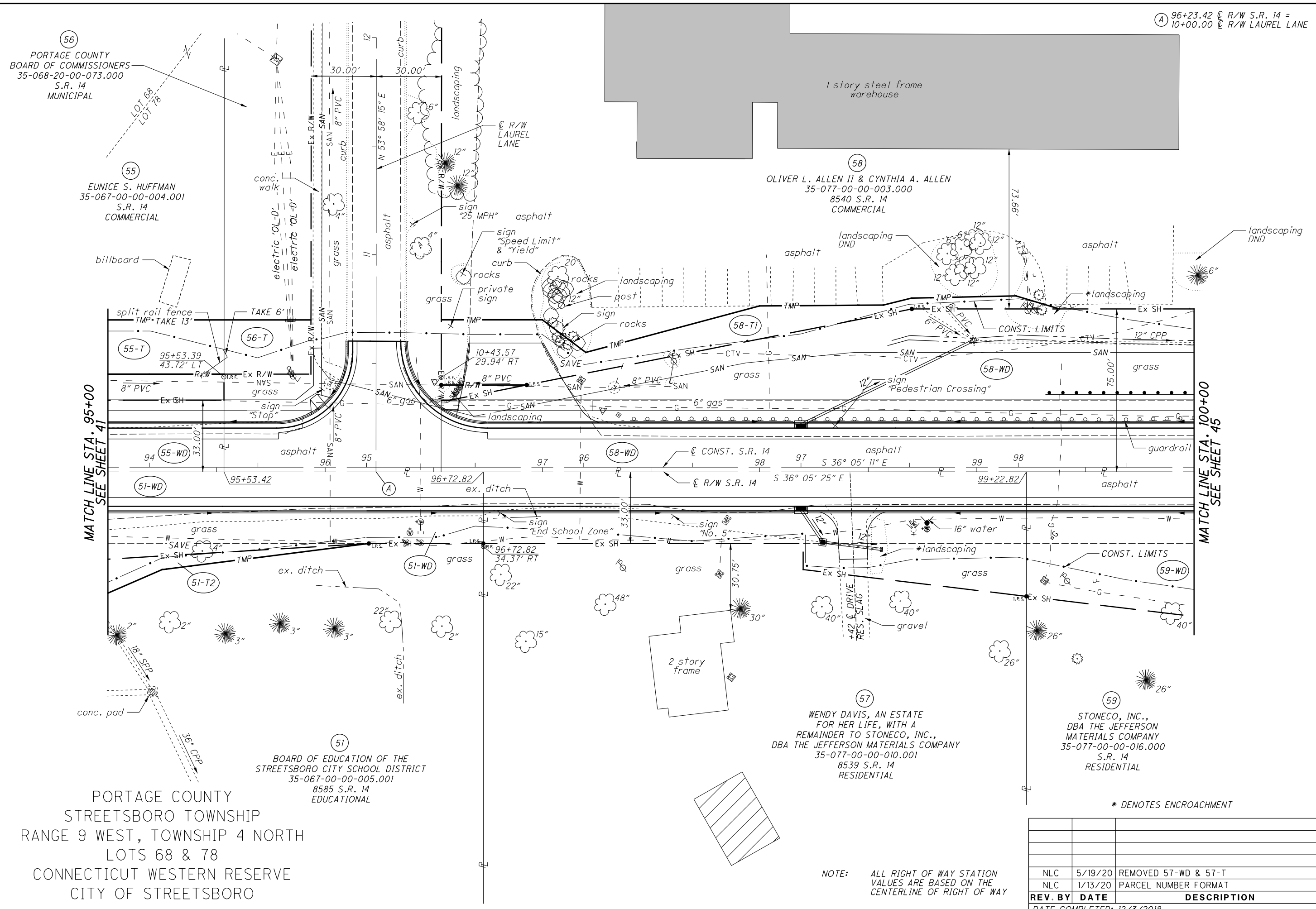
POR-14-3.65

43 / 52

(272)
281

MATCH LINE STA. 95+00
SEE SHEET 41

MATCH LINE STA. 100+00
SEE SHEET 45



PORTAGE COUNTY
STREETSBORO TOWNSHIP
RANGE 9 WEST, TOWNSHIP 4 NORTH
LOTS 68 & 78
CONNECTICUT WESTERN RESERVE
CITY OF STREETSBORO

(51)
BOARD OF EDUCATION OF THE
STREETSBORO CITY SCHOOL DISTRICT
35-067-00-00-005.001
8585 S.R. 14
EDUCATIONAL

(57)
WENDY DAVIS, AN ESTATE
FOR HER LIFE, WITH A
REMAINDER TO STONECO, INC.,
DBA THE JEFFERSON MATERIALS COMPANY
35-077-00-00-010.001
8539 S.R. 14
RESIDENTIAL

(59)
STONECO, INC.,
DBA THE JEFFERSON
MATERIALS COMPANY
35-077-00-00-016.000
S.R. 14
RESIDENTIAL

* DENOTES ENCROACHMENT

NOTE: ALL RIGHT OF WAY STATION
VALUES ARE BASED ON THE
CENTERLINE OF RIGHT OF WAY

REV. BY	DATE	DESCRIPTION
NLC	5/19/20	REMOVED 57-WD & 57-T
NLC	1/13/20	PARCEL NUMBER FORMAT
DATE COMPLETED: 12/3/2018		

FILES
DATE
TIME
USER