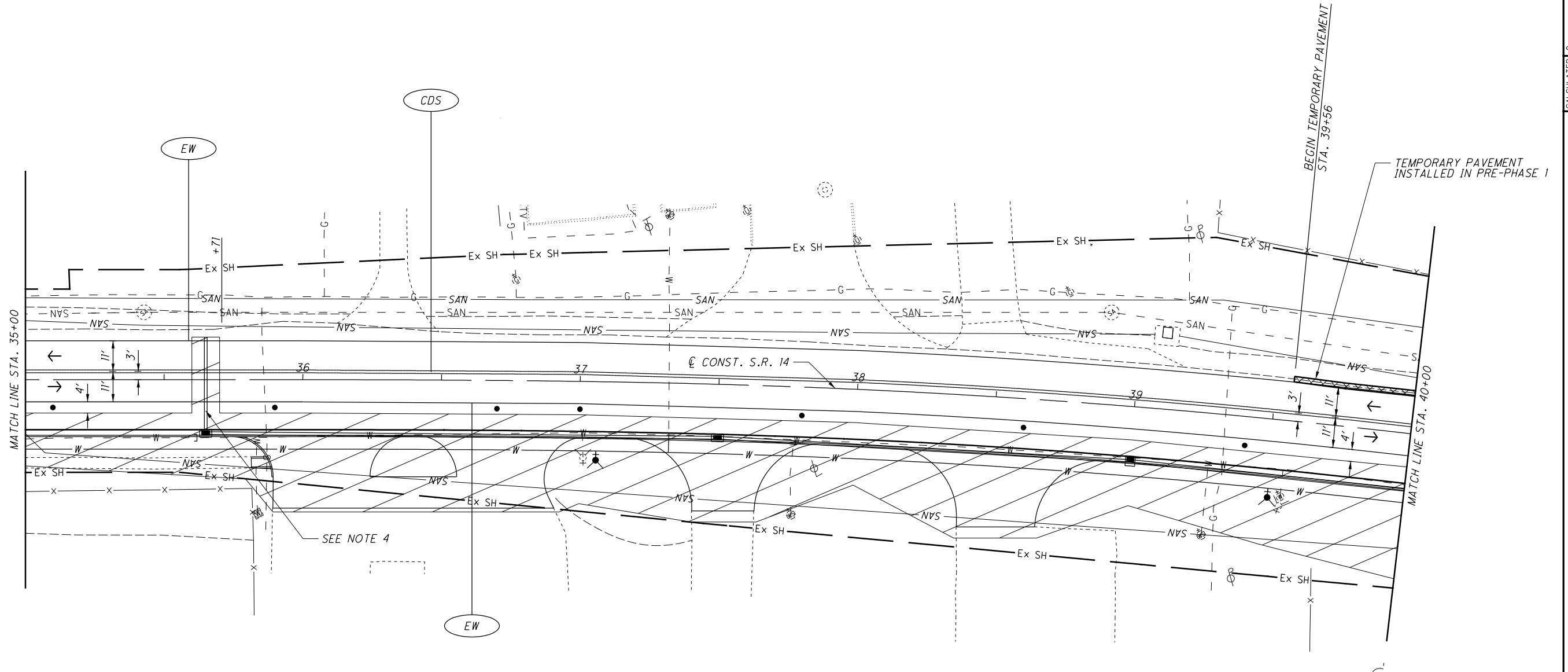


O:\2017\2017114\POR\02234\Design\M01\Sheets\02234mp003.dgn Design 2/19/2021 4:34:53 PM mthomas



CALCULATED
SLB
CHECKED
LOB

0 20 40
HORIZONTAL
SCALE IN FEET

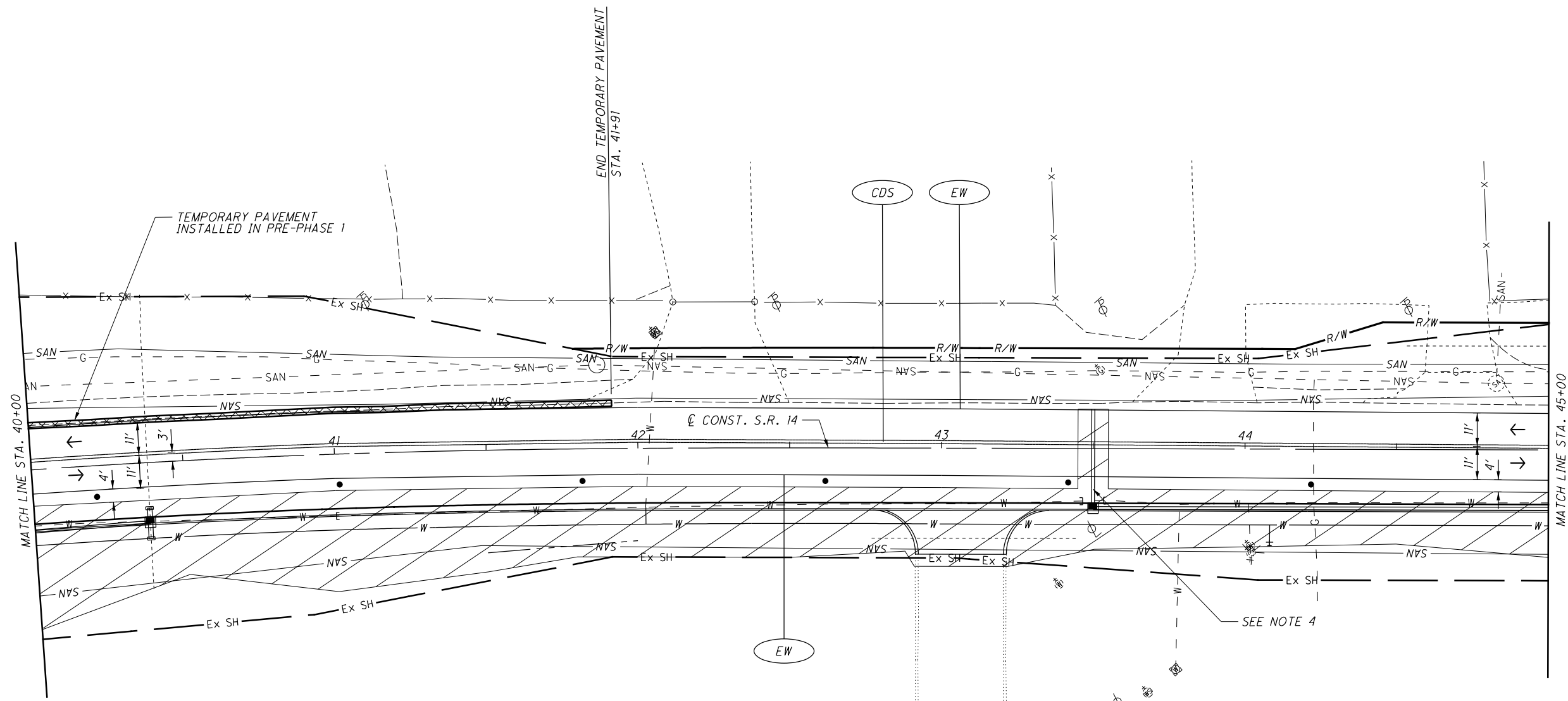
MAINTENANCE OF TRAFFIC PLAN - PHASE 1
STA. 35+00 TO STA. 40+00

POR-14-3.65

MAINTENANCE OF TRAFFIC NOTES:

1. THE CONTRACTOR SHALL COVER OR REMOVE EXISTING CONFLICTING SIGNING AND COVER OR REMOVE EXISTING CONFLICTING PAVEMENT MARKINGS PRIOR TO CONSTRUCTION.
2. THE CONTRACTOR SHALL MAINTAIN ACCESS TO ALL RESIDENTIAL AND COMMERCIAL PROPERTIES AT ALL TIMES.
3. FOR MAINTENANCE OF TRAFFIC LEGEND, SEE SHEET 27.
4. PERFORM STORM SEWER CROSSING DURING OFF-PEAK HOURS. MAINTAIN TRAFFIC IN ACCORDANCE WITH SCD MT-97.10.

O:\2017\2017114\POR\02234\Design\M01\Sheets\02234mp004.dgn Design 2/19/2021 4:36:59 PM mthomas



CALCULATED
SLB
CHECKED
LOB

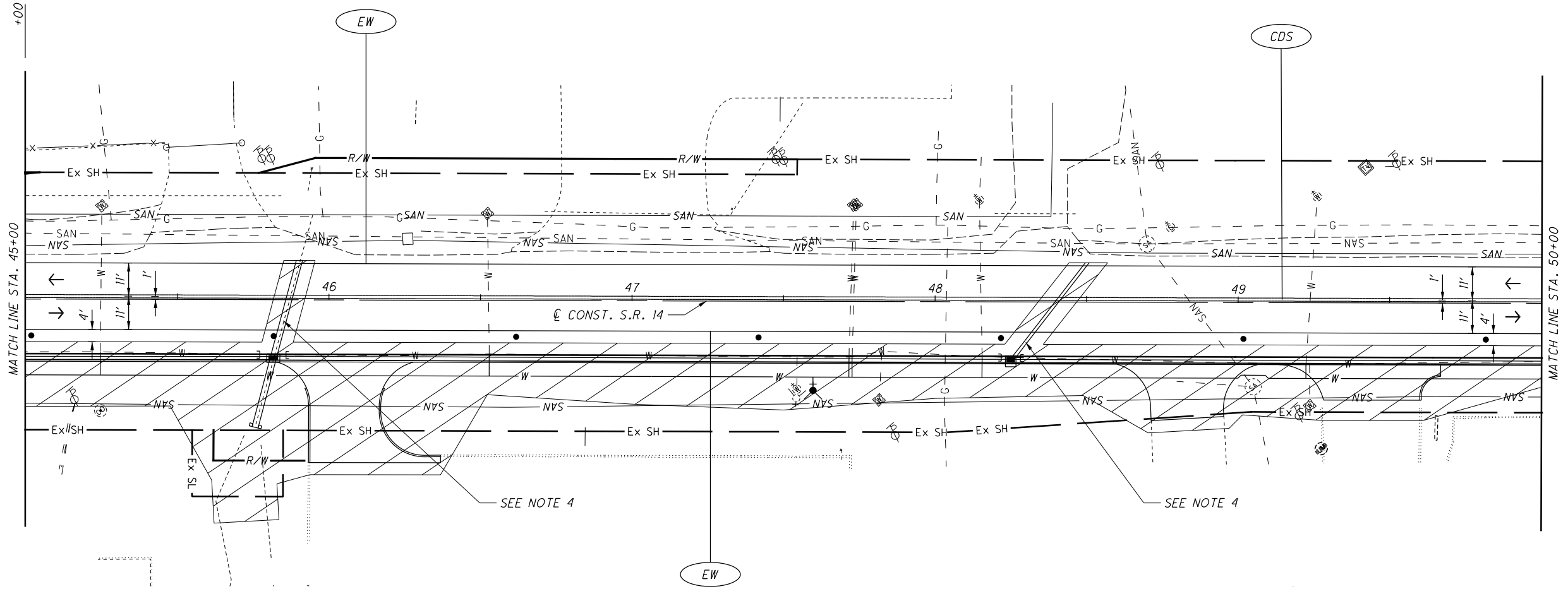
MAINTENANCE OF TRAFFIC PLAN - PHASE 1
STA. 40+00 TO STA. 45+00

POR-14-3.65

MAINTENANCE OF TRAFFIC NOTES:

1. THE CONTRACTOR SHALL COVER OR REMOVE EXISTING CONFLICTING SIGNING AND COVER OR REMOVE EXISTING CONFLICTING PAVEMENT MARKINGS PRIOR TO CONSTRUCTION.
2. THE CONTRACTOR SHALL MAINTAIN ACCESS TO ALL RESIDENTIAL AND COMMERCIAL PROPERTIES AT ALL TIMES.
3. FOR MAINTENANCE OF TRAFFIC LEGEND, SEE SHEET 27.
4. PERFORM STORM SEWER CROSSING DURING OFF-PEAK HOURS. MAINTAIN TRAFFIC IN ACCORDANCE WITH SCD MT-97.10.

O:\2017\2017114\POR\02234\Design\M01\Sheets\02234mp005.dgn Design 2/19/2021 4:50:41PM mthomas



MAINTENANCE OF TRAFFIC NOTES:

1. THE CONTRACTOR SHALL COVER OR REMOVE EXISTING CONFLICTING SIGNING AND COVER OR REMOVE EXISTING CONFLICTING PAVEMENT MARKINGS PRIOR TO CONSTRUCTION.
2. THE CONTRACTOR SHALL MAINTAIN ACCESS TO ALL RESIDENTIAL AND COMMERCIAL PROPERTIES AT ALL TIMES.
3. FOR MAINTENANCE OF TRAFFIC LEGEND, SEE SHEET 27.
4. PERFORM STORM SEWER CROSSING DURING OFF-PEAK HOURS. MAINTAIN TRAFFIC IN ACCORDANCE WITH SCD MT-97.10.

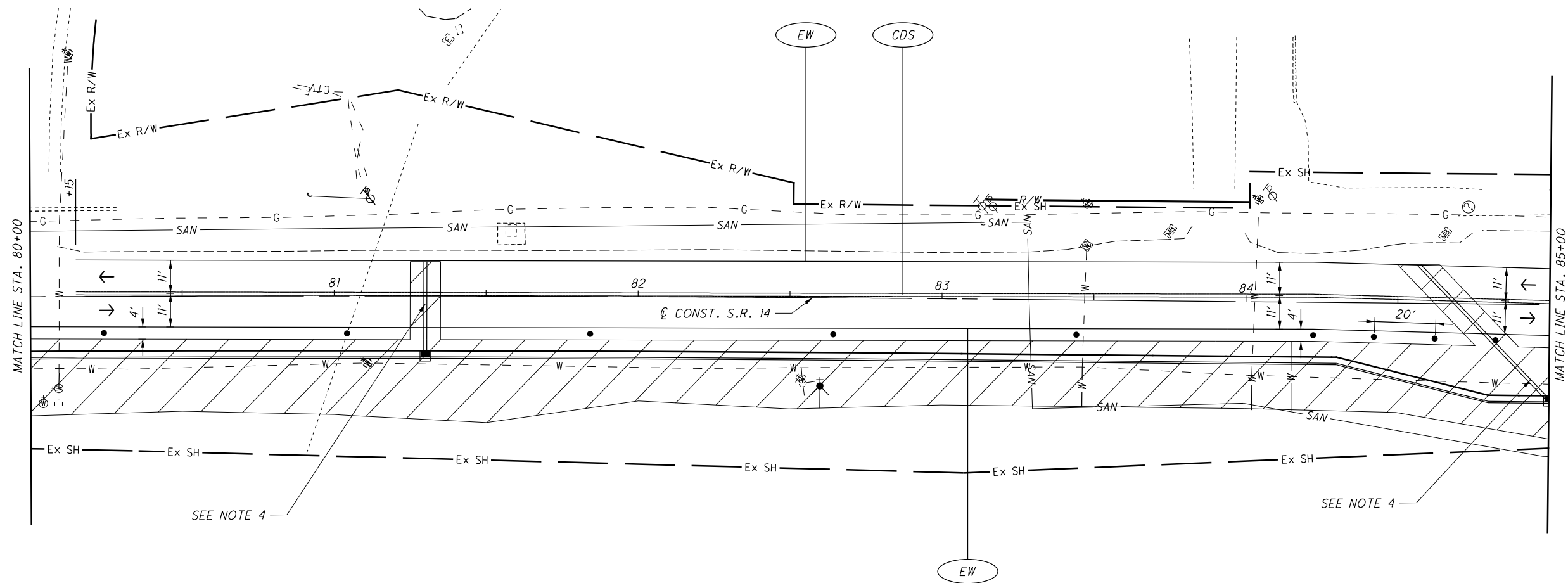


CALCULATED
SLB
CHECKED
LOB

MAINTENANCE OF TRAFFIC PLAN - PHASE 1
STA. 45+00 TO STA. 50+00

POR-14-3.65

O:\2017\2017114\POR\02234\Design\M01\Sheets\02234mp02.dgn Design 2/19/2021 4:52:59 PM mthomas



SEE NOTE 4

SEE NOTE 4

MAINTENANCE OF TRAFFIC NOTES:

1. THE CONTRACTOR SHALL COVER OR REMOVE EXISTING CONFLICTING SIGNING AND COVER OR REMOVE EXISTING CONFLICTING PAVEMENT MARKINGS PRIOR TO CONSTRUCTION.
2. THE CONTRACTOR SHALL MAINTAIN ACCESS TO ALL RESIDENTIAL AND COMMERCIAL PROPERTIES AT ALL TIMES.
3. FOR MAINTENANCE OF TRAFFIC LEGEND, SEE SHEET 27.
4. PERFORM STORM SEWER CROSSING DURING OFF-PEAK HOURS. MAINTAIN TRAFFIC IN ACCORDANCE WITH SCD MT-97.10.

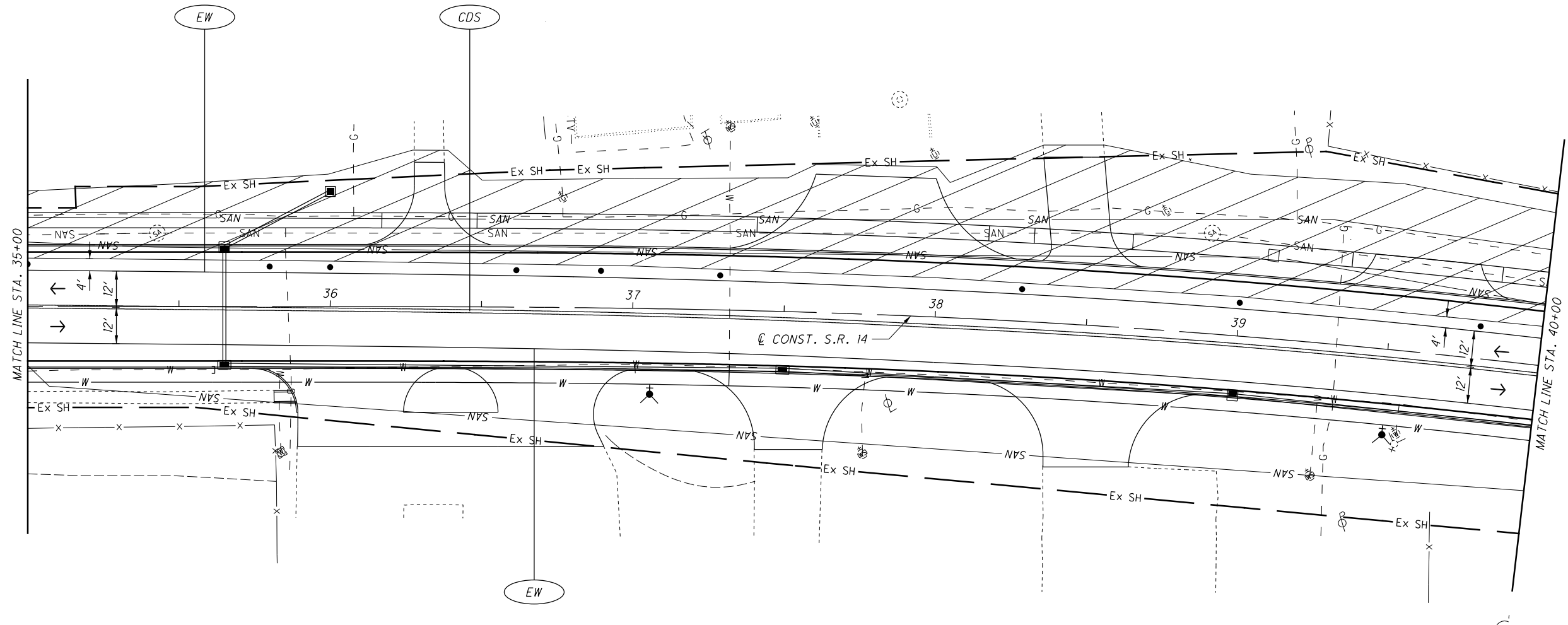
CALCULATED
SLB
CHECKED
LOB

0 20 40
HORIZONTAL
SCALE IN FEET

**MAINTENANCE OF TRAFFIC PLAN - PHASE 1
STA. 80+00 TO STA. 85+00**

POR-14-3.65

O:\2017\2017114\POR\02234\Design\M01\Sheets\02234mp053.dgn Design 2/19/2021 4:55:20 PM mthomas



CALCULATED
SLB
CHECKED
LOB

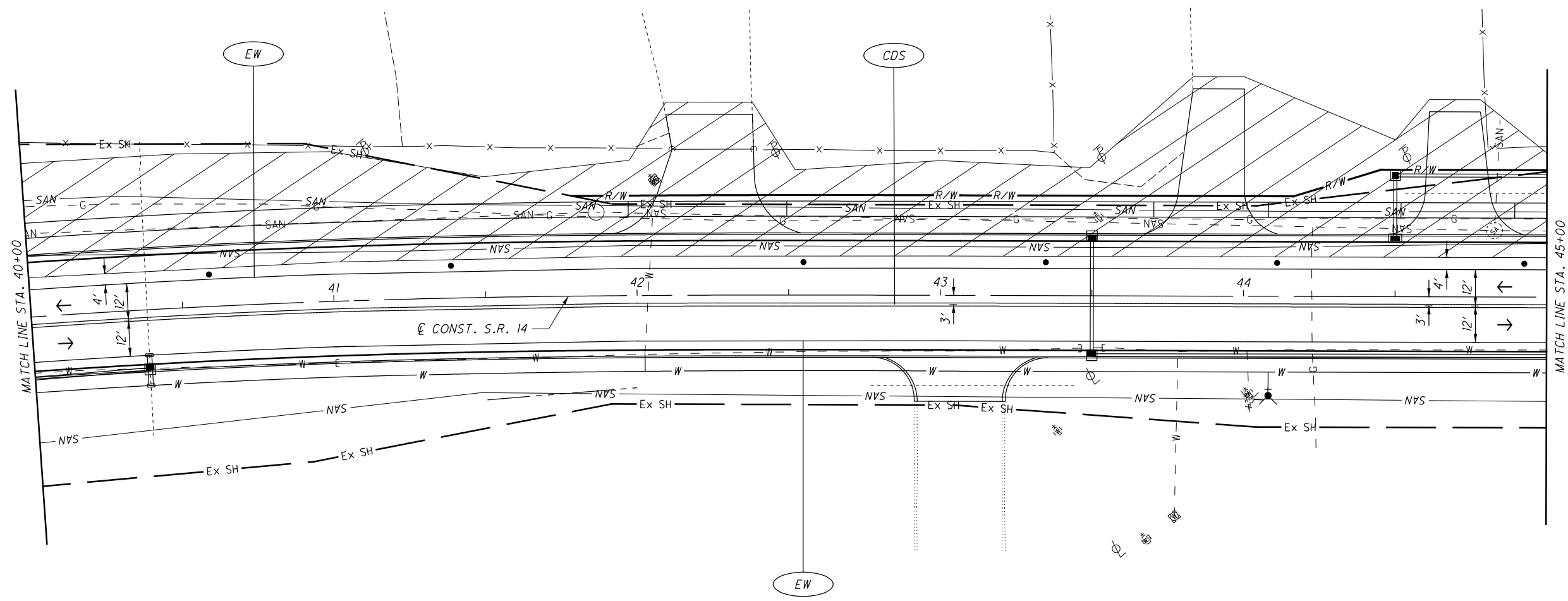
0 20 40
HORIZONTAL
SCALE IN FEET

MAINTENANCE OF TRAFFIC PLAN - PHASE 3
STA. 35+00 TO STA. 40+00

POR-14-3.65

- MAINTENANCE OF TRAFFIC NOTES:**
1. THE CONTRACTOR SHALL COVER OR REMOVE EXISTING CONFLICTING SIGNING AND COVER OR REMOVE EXISTING CONFLICTING PAVEMENT MARKINGS PRIOR TO CONSTRUCTION.
 2. THE CONTRACTOR SHALL MAINTAIN ACCESS TO ALL RESIDENTIAL AND COMMERCIAL PROPERTIES AT ALL TIMES.
 3. FOR MAINTENANCE OF TRAFFIC LEGEND, SEE SHEET 27.

O:\2017\2017114\POR\02234\Design\M01\Sheets\02234mp054.dgn Design 2/19/2021 4:58:00 PM mthomas



CALCULATED
SLB
CHECKED
LOB

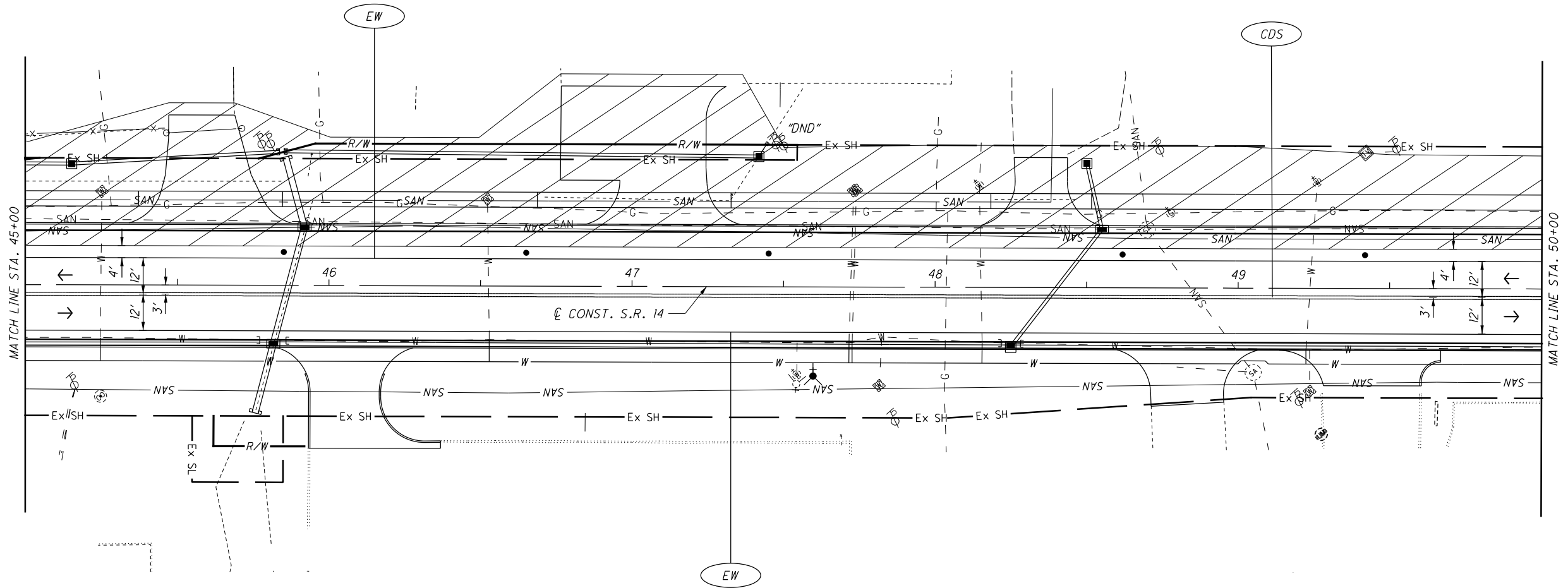
0 20 40
HORIZONTAL
SCALE IN FEET

MAINTENANCE OF TRAFFIC PLAN - PHASE 3
STA. 40+00 TO STA. 45+00

POR-14-3.65

- MAINTENANCE OF TRAFFIC NOTES:**
1. THE CONTRACTOR SHALL COVER OR REMOVE EXISTING CONFLICTING SIGNING AND COVER OR REMOVE EXISTING CONFLICTING PAVEMENT MARKINGS PRIOR TO CONSTRUCTION.
 2. THE CONTRACTOR SHALL MAINTAIN ACCESS TO ALL RESIDENTIAL AND COMMERCIAL PROPERTIES AT ALL TIMES.
 3. FOR MAINTENANCE OF TRAFFIC LEGEND, SEE SHEET 27.

O:\2017\2017114\POR\02234\Design\M01\Sheets\02234mp055.dgn Design 2/19/2021 5:00:05 PM mthomas



CALCULATED	SLB
CHECKED	LOB

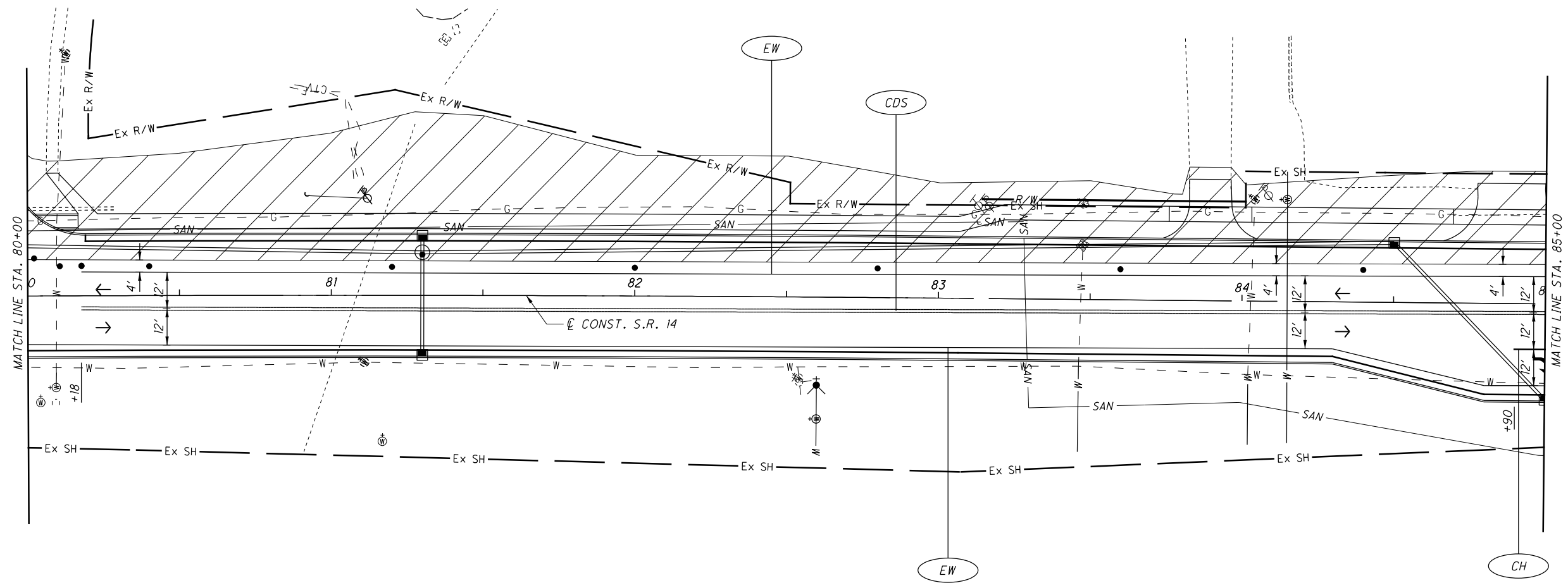
MAINTENANCE OF TRAFFIC PLAN - PHASE 3
STA. 45+00 TO STA. 50+00

POR-14-3.65

MAINTENANCE OF TRAFFIC NOTES:

1. THE CONTRACTOR SHALL COVER OR REMOVE EXISTING CONFLICTING SIGNING AND COVER OR REMOVE EXISTING CONFLICTING PAVEMENT MARKINGS PRIOR TO CONSTRUCTION.
2. THE CONTRACTOR SHALL MAINTAIN ACCESS TO ALL RESIDENTIAL AND COMMERCIAL PROPERTIES AT ALL TIMES.
3. FOR MAINTENANCE OF TRAFFIC LEGEND, SEE SHEET 27.

O:\2017\2017114\POR\02234\Design\M01\Sheets\02234mp062.dgn Design 2/19/2021 5:02:36 PM mthomas



MAINTENANCE OF TRAFFIC NOTES:

1. THE CONTRACTOR SHALL COVER OR REMOVE EXISTING CONFLICTING SIGNING AND COVER OR REMOVE EXISTING CONFLICTING PAVEMENT MARKINGS PRIOR TO CONSTRUCTION.
2. THE CONTRACTOR SHALL MAINTAIN ACCESS TO ALL RESIDENTIAL AND COMMERCIAL PROPERTIES AT ALL TIMES.
3. FOR MAINTENANCE OF TRAFFIC LEGEND, SEE SHEET 27.



CALCULATED
SLB
CHECKED
LOB

**MAINTENANCE OF TRAFFIC PLAN - PHASE 3
STA. 80+00 TO STA. 85+00**

POR-14-3.65

SHEET NUM.										PART.		ITEM	ITEM EXT	GRAND TOTAL	UNIT	DESCRIPTION	SEE SHEET NO.
15	75		180	184	186		196	200		01/NHS/PV	02/NHS/OT						
WATER WORK																	
				79						79		638	00701	79	FT	6" WATER MAIN DUCTILE IRON PIPE ANSI CLASS 52, MECHANICAL JOINTS AND FITTINGS, AS PER PLAN	186
				14						14		638	01301	14	FT	8" WATER MAIN DUCTILE IRON PIPE ANSI CLASS 52, MECHANICAL JOINTS AND FITTINGS, AS PER PLAN	186
				8						8		638	02501	8	FT	12" WATER MAIN DUCTILE IRON PIPE ANSI CLASS 52, MECHANICAL JOINTS AND FITTINGS, AS PER PLAN	186
				1,866						1,850	16	638	02917	1,866	FT	14" WATER MAIN DUCTILE IRON PIPE ANSI CLASS 52, MECHANICAL JOINTS AND FITTINGS, AS PER PLAN	186
				11						11		638	03101	11	FT	16" WATER MAIN DUCTILE IRON PIPE ANSI CLASS 52, MECHANICAL JOINTS AND FITTINGS, AS PER PLAN	186
					500					500		638	04801	500	FT	3/4" COPPER SERVICE BRANCH, AS PER PLAN	186
				89						89		638	04901	89	FT	1" COPPER SERVICE BRANCH, AS PER PLAN	186
				10						10		638	07800	10	EACH	6" GATE VALVE AND VALVE BOX	
				15						15		638	10201	15	EACH	6" FIRE HYDRANT, AS PER PLAN	186
				3						3		638	10400	3	EACH	FIRE HYDRANT ADJUSTED TO GRADE	
				19						19		638	10481	19	EACH	FIRE HYDRANT REMOVED, AS PER PLAN	186
				31						16	15	638	10800	31	EACH	VALVE BOX ADJUSTED TO GRADE	
				1						1		638	10801	1	EACH	VALVE BOX ADJUSTED TO GRADE, AS PER PLAN	14
				29						29		638	10900	29	EACH	SERVICE BOX ADJUSTED TO GRADE	
				5						5		638	98000	5	EACH	WATER WORK, MISC.: 14" CUTTING IN SLEEVE, VALVE WITH VALVE BOX	186
				1							1	638	98000	1	EACH	WATER WORK, MISC.: 16" CUTTING IN SLEEVE, VALVE WITH VALVE BOX	186
					15					15		638	98000	15	EACH	WATER WORK, MISC.: CURB BOX	186
					LS					LS		638	98100	LS	EACH	WATER WORK, MISC.: CITY OF STREETSBORO WATER DEPARTMENT CHARGES	186
				7,341						1,196	6,145	638	98600	7,341	FT	WATER WORK, MISC.: WATER MAIN ABANDONED	186
SANITARY SEWER																	
250											250	611	00901	250	FT	6" CONDUIT, TYPE B, AS PER PLAN, 748.02	15
250											250	611	01101	250	FT	6" CONDUIT, TYPE C, AS PER PLAN, 748.02	15
				8						8		611	99654	8	EACH	MANHOLE ADJUSTED TO GRADE	
				1						1		611	99655	1	EACH	MANHOLE ADJUSTED TO GRADE, AS PER PLAN	14
				1						1		611	99660	1	EACH	MANHOLE RECONSTRUCTED TO GRADE	
				8						8		611	99690	8	EACH	MANHOLE, MISC.: EXISTING FLUSHING STATION REMOVED AND RELOCATED	181
				5						5		611	99690	5	EACH	MANHOLE, MISC.: MANHOLE ADJUSTED TO GRADE	180
				1						1		611	99690	1	EACH	MANHOLE, MISC.: MANHOLE RECONSTRUCTED TO GRADE	180
TRAFFIC CONTROL																	
	2									2		620	00500	2	EACH	DELINATOR, POST GROUND MOUNTED	
	11									11		626	00110	11	EACH	BARRIER REFLECTOR, TYPE 2 (1 WAY)	
										483.6		630	02100	483.6	FT	GROUND MOUNTED SUPPORT, NO. 2 POST	
										289.8		630	03100	289.8	FT	GROUND MOUNTED SUPPORT, NO. 3 POST	
										56		630	04101	56	FT	GROUND MOUNTED SUPPORT, NO. 4 POST, AS PER PLAN	192
										12.6		630	08520	12.6	FT	STREET NAME SIGN SUPPORT, NO. 3 POST	
										45.6		630	08530	45.6	FT	STREET NAME SIGN SUPPORT, NO. 4 POST	
										4		630	08600	4	EACH	SIGN POST REFLECTOR	
										3		630	79101	3	EACH	SIGN HANGER ASSEMBLY, MAST ARM, AS PER PLAN	192
										4		630	79500	4	EACH	SIGN SUPPORT ASSEMBLY, POLE MOUNTED	
										540.9		630	80100	540.9	SF	SIGN, FLAT SHEET	
										47		630	84900	47	EACH	REMOVAL OF GROUND MOUNTED SIGN AND DISPOSAL	
										2		630	85100	2	EACH	REMOVAL OF GROUND MOUNTED SIGN AND REERECTION	
										37		630	86002	37	EACH	REMOVAL OF GROUND MOUNTED POST SUPPORT AND DISPOSAL	
										3		630	87100	3	EACH	REMOVAL OF OVERHEAD MOUNTED SIGN AND REERECTION	
										3		630	87520	3	EACH	REMOVAL OF POLE MOUNTED SIGN AND REERECTION	
										2		631	93250	2	EACH	SCHOOL SPEED LIMIT SIGN ASSEMBLY, MISC.: REERECTION OF SCHOOL SPEED LIMIT SIGN ASSEMBLY, SOLAR-POWERED	192
										2		631	94490	2	EACH	REMOVAL, MISC.: SCHOOL SPEED LIMIT SIGN ASSEMBLY, SOLAR-POWERED	192
										1		631	94490	1	EACH	REMOVAL, MISC.: REMOVAL OF SIGN SERVICE	192
										0.12		644	00100	0.12	MILE	EDGE LINE, 4"	
										3.03		644	00300	3.03	MILE	CENTER LINE	
										1,320		644	00400	1,320	FT	CHANNELIZING LINE, 8"	
										187		644	00500	187	FT	STOP LINE	
										442		644	00600	442	FT	CROSSWALK LINE	

CALCULATED MJT CHECKED CJT
GENERAL SUMMARY
POR-14-3.65
 71
 281

#FILES # DATES # TIMES # BASE# 17\2017114\POR\102234\Design\Roadway\Sheets\102234gg001.dgn Design 2/19/2021 3:30:25 PM mthomas

① CONST. S.R. 14 CURVE DATA
 P.I. Sta. 39+39.52 TS Sta. 35+70.77 CS Sta. 41+06.60
 $\Delta = 10^\circ 43' 00''$ (RT) SC Sta. 37+70.77 ST Sta. 43+06.60
 $D_c = 2^\circ 00' 00''$ $\Delta_c = 6^\circ 43' 00''$ (RT)
 $R = 2,864.79'$ $L_c = 335.83'$
 $L_s = 200.00'$ $E_s = 13.16'$
 $B_s = 2^\circ 00' 00''$ $\theta_{max} = 0.032$
 $LT = 133.34'$ $C = 335.64'$
 $ST = 66.67'$ $C1 = C2 = 199.99'$
 $x = 199.98'$ $C.B.1 = S 58^\circ 19' 11'' E$
 $y = 2.33'$ $C.B.2 = S 53^\circ 37' 41'' E$
 $k = 100.00'$ $C.B.2 = N 48^\circ 56' 11'' W$
 $p = 0.58'$

*NOTE - PROPOSED WATER LINE SERVICE EXTENSIONS TO BE OF THE SAME SIZE AS THE EXISTING SERVICE BEING EXTENDED

CROSS REFERENCES	
SHEET NO.	DESCRIPTION
3	BENCHMARKS
73-79	SUBSUMMARY
175-178	DRIVEWAY DETAILS
191-191H	CURB RAMP DETAILS



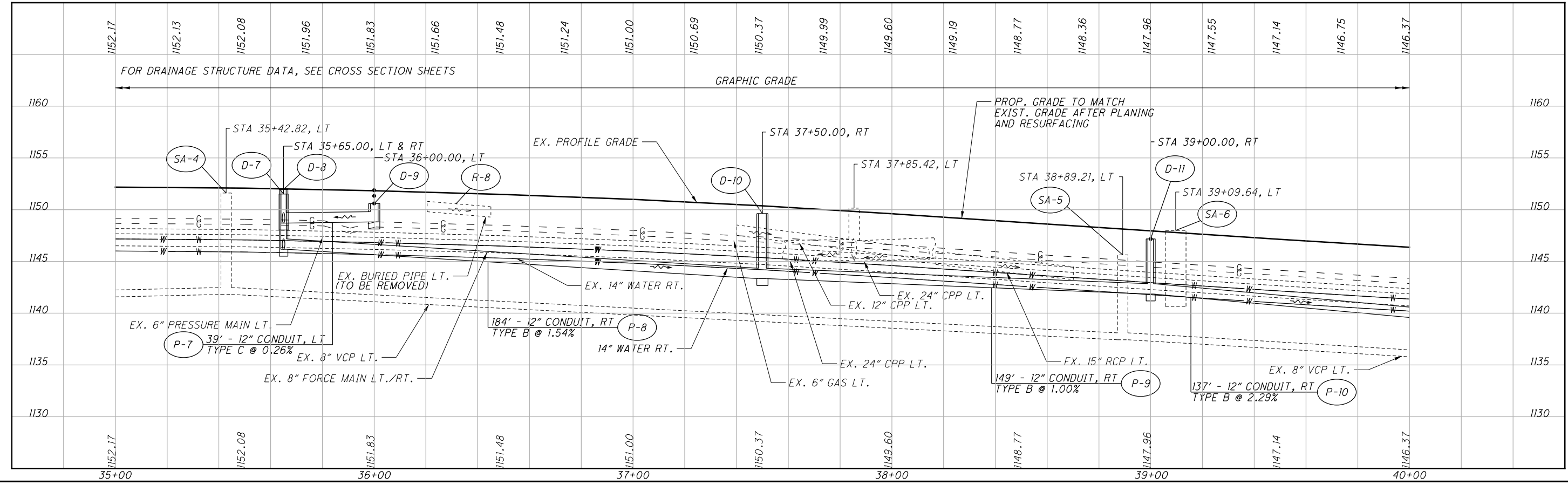
MATCH LINE STA. 35+00
SEE SHEET 83

MATCH LINE STA. 40+00
SEE SHEET 85

BENCHMARK #BM36
BOLT ON FIRE HYDRANT FLANGE
STA. 39+55.45, 30.02' RT.
ELEV. = 1146.35

**14" PLUG
STA. 35+62, 20.9' RT.

UNDERCUT AS INDICATED ON TYPICAL SECTIONS AND CROSS SECTIONS



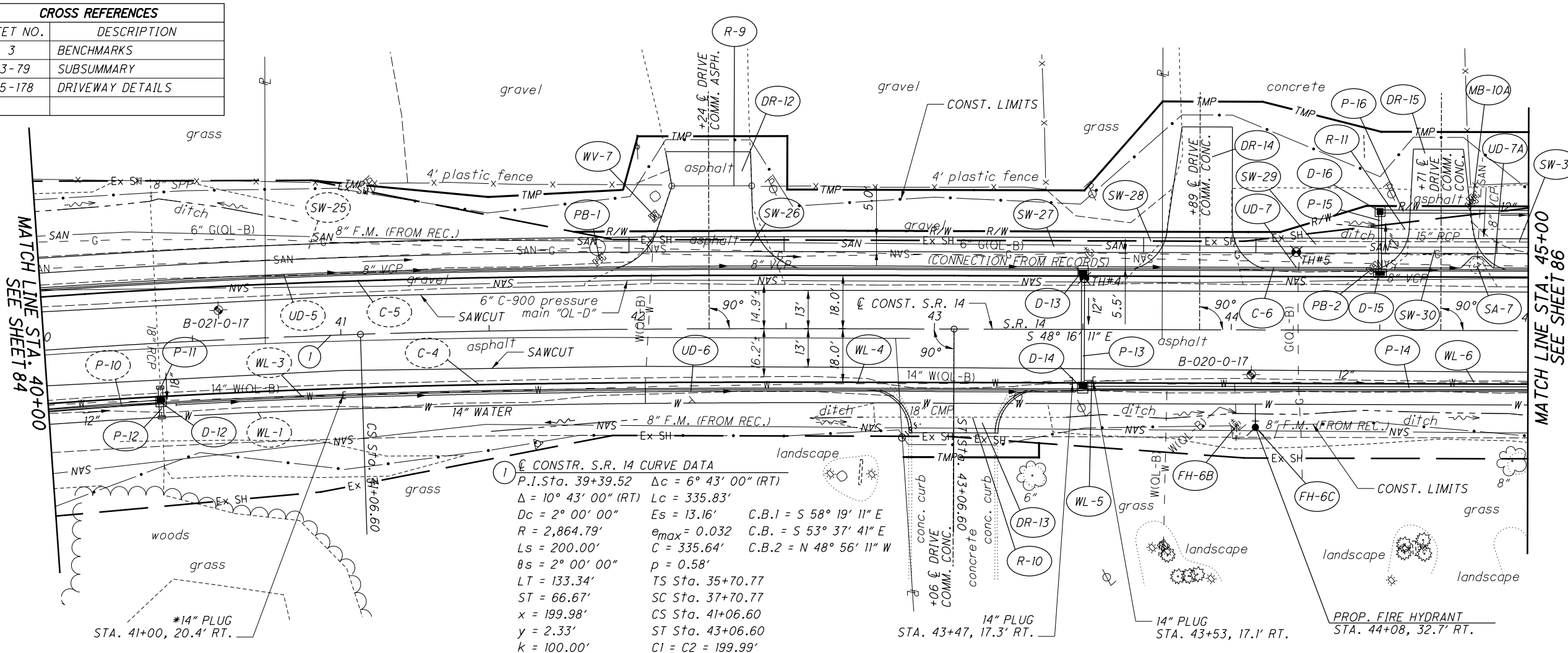
PLAN AND PROFILE
STA. 35+00 TO STA. 40+00

POR-14-3.65

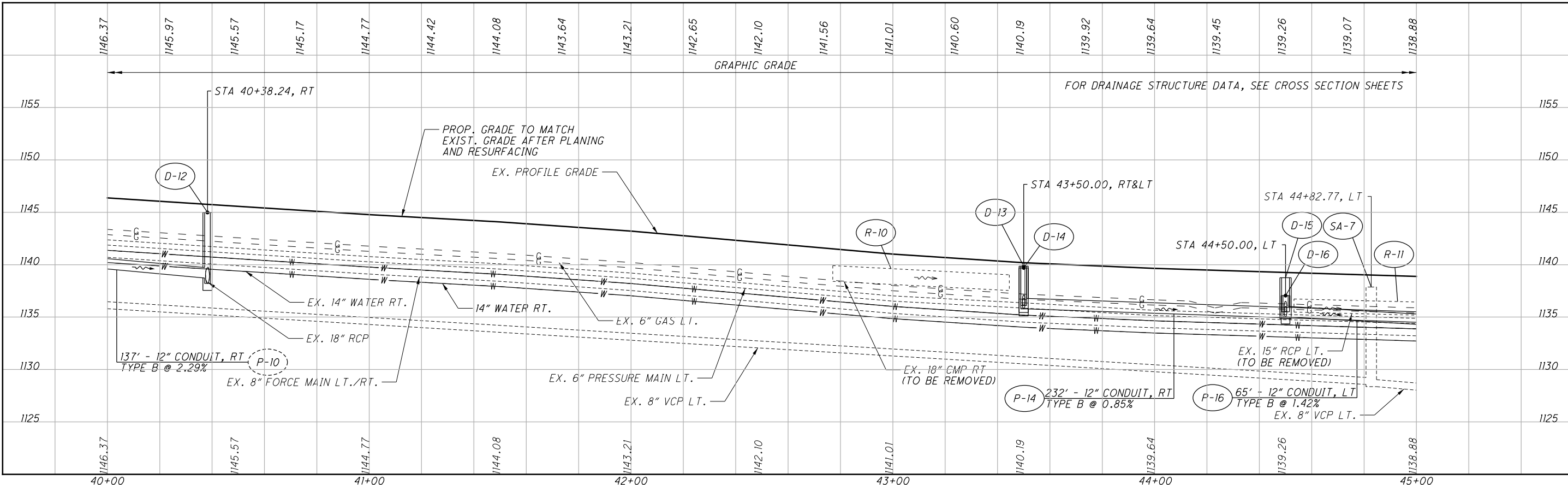
FILES: 2/19/2021 3:33:38 PM mthomas
 17_2017114_POR\102234\Design\Roadway\Sheets\102234gp003.dgn Design

UNDERCUT AS INDICATED ON TYPICAL SECTIONS AND CROSS SECTIONS

CROSS REFERENCES	
SHEET NO.	DESCRIPTION
3	BENCHMARKS
73-79	SUBSUMMARY
175-178	DRIVEWAY DETAILS



CONST. S.R. 14 CURVE DATA
 P.I. Sta. 39+39.52 $\Delta c = 6^\circ 43' 00''$ (RT)
 $\Delta = 10^\circ 43' 00''$ (RT) $L_c = 335.83'$
 $D_c = 2^\circ 00' 00''$ $E_s = 13.16'$ $C.B.1 = S 58^\circ 19' 11'' E$
 $R = 2,864.79'$ $e_{max} = 0.032$ $C.B.2 = S 53^\circ 37' 41'' E$
 $L_s = 200.00'$ $C = 335.64'$ $C.B.2 = N 48^\circ 56' 11'' W$
 $\theta_s = 2^\circ 00' 00''$ $p = 0.58'$
 $LT = 133.34'$ $TS Sta. 35+70.77$
 $ST = 66.67'$ $SC Sta. 37+70.77$
 $x = 199.98'$ $CS Sta. 41+06.60$
 $y = 2.33'$ $ST Sta. 43+06.60$
 $k = 100.00'$ $CI = C2 = 199.99'$



CALCULATED
 MJT
 CHECKED
 CJT

PLAN AND PROFILE
 STA. 40+00 TO STA. 45+00

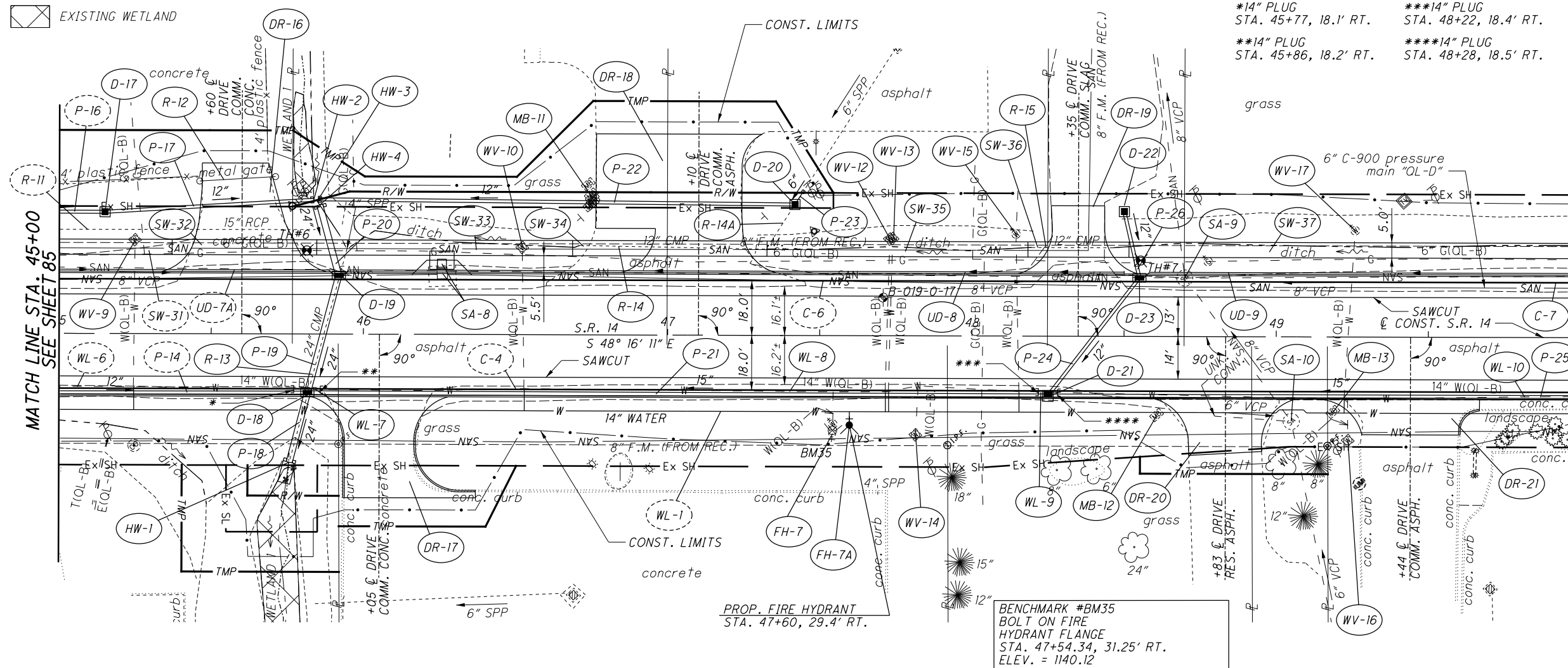
POR-14-3.65

85
 281

9FILES
 5DAMES
 5TIMES
 5BASE017_2017114_POR\102234\Design\Roadway\Sheets\102234gp004.dgn Design 2/19/2021 3:36:25 PM mthomas

UNDERCUT AS INDICATED ON TYPICAL SECTIONS AND CROSS SECTIONS

EXISTING WETLAND



- *14" PLUG STA. 45+77, 18.1' RT.
- **14" PLUG STA. 45+86, 18.2' RT.
- ***14" PLUG STA. 48+22, 18.4' RT.
- ****14" PLUG STA. 48+28, 18.5' RT.

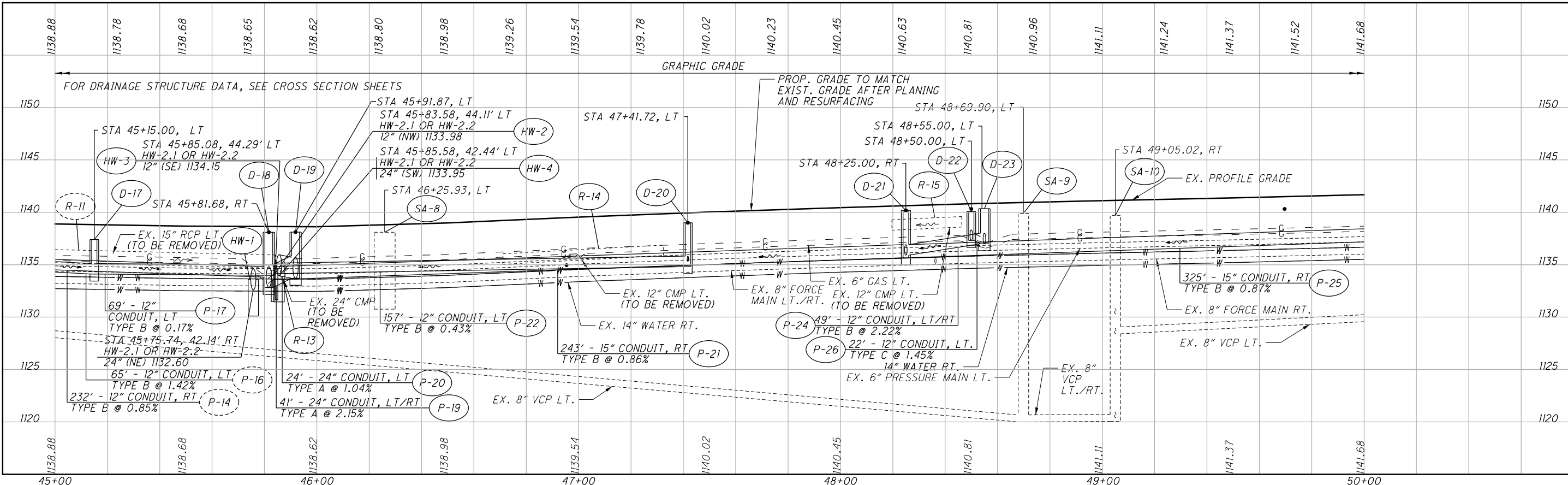
CROSS REFERENCES	
SHEET NO.	DESCRIPTION
3	BENCHMARKS
73-79	SUBSUMMARY
175-178	DRIVEWAY DETAILS



MATCH LINE STA. 45+00 SEE SHEET 85

MATCH LINE STA. 50+00 SEE SHEET 87

PROP. FIRE HYDRANT STA. 47+60, 29.4' RT.
BENCHMARK #BM35 BOLT ON FIRE HYDRANT FLANGE STA. 47+54.34, 31.25' RT. ELEV. = 1140.12



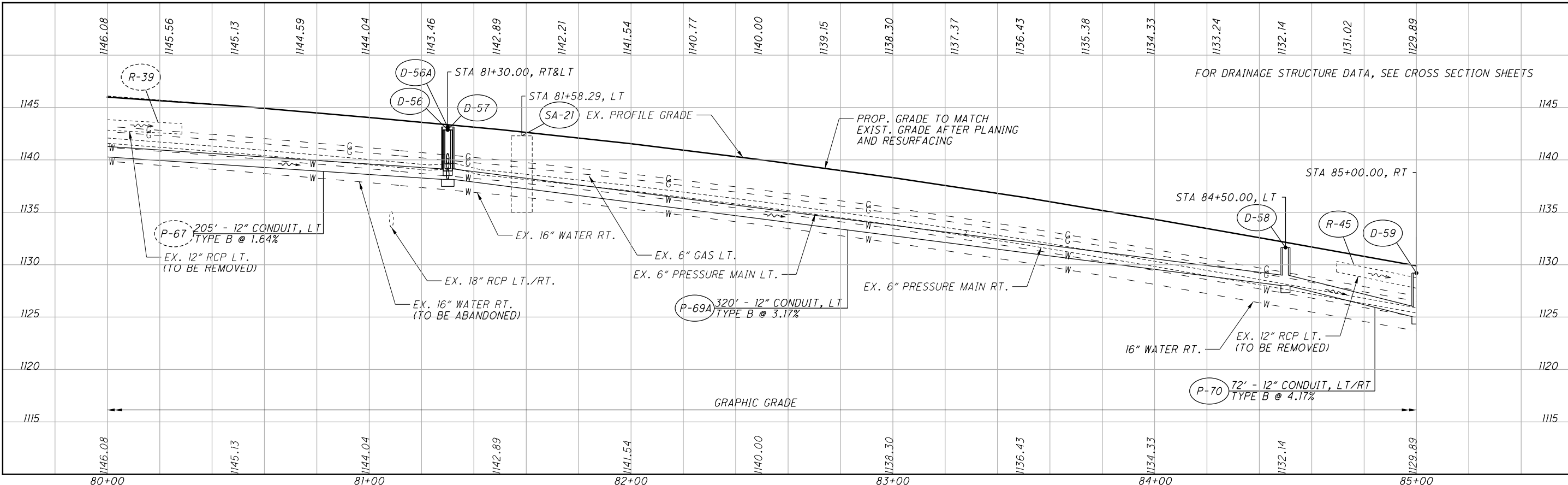
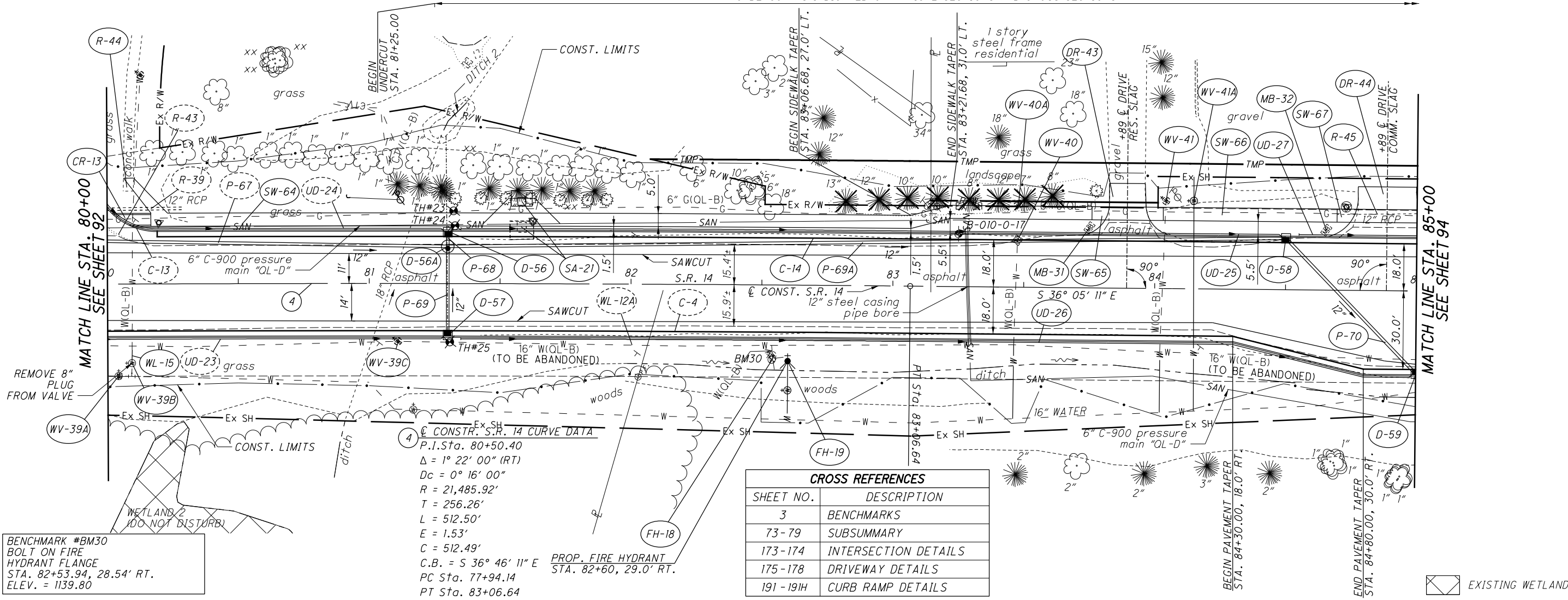
PLAN AND PROFILE STA. 45+00 TO STA. 50+00

POR-14-3.65

86
281

#FILES: 17
 #DAYS: 2
 #TIMES: 17
 C:\Users\mthomas\OneDrive\Documents\172017114\POR\102234\Design\Roadway\Sheets\102234gp005.dgn Design 2/19/2021 3:38:05 PM mthomas

UNDERCUT AS INDICATED ON TYPICAL SECTIONS AND CROSS SECTIONS



CALCULATED
MUT
CHECKED
CJT

PLAN AND PROFILE
STA. 80+00 TO STA. 85+00

FILES: 2017114_POR\102234_Design\Roadway\Sheets\102234gp012.dgn Design 2/19/2021 3:40:27 PM mthomas

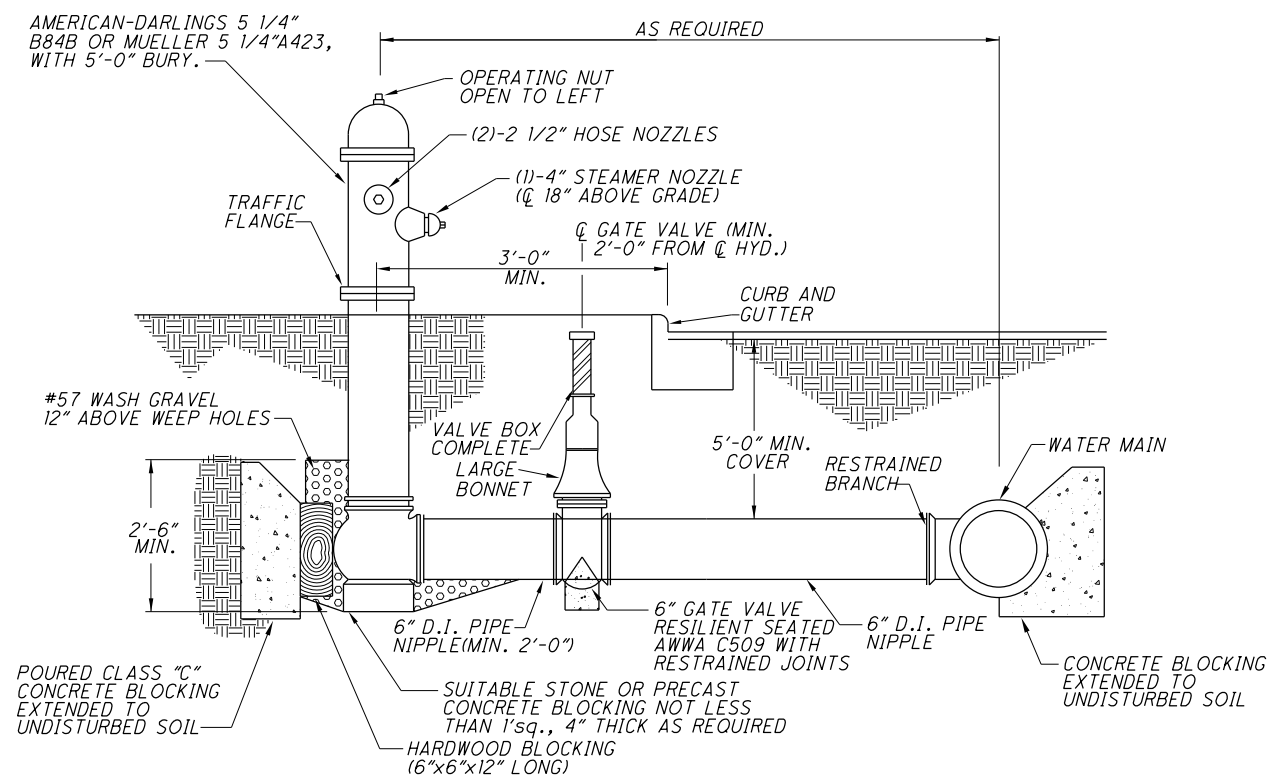
REF. NO.	SHEET NO.	LOCATION	STATION		SIDE	202	638	638	638	638	638	638	638	638	638	638	638	638	
			ASBESTOS PIPE REMOVED	6" WATER MAIN DUCTILE IRON PIPE ANSI CLASS 52, MECHANICAL JOINTS AND FITTINGS, AS PER PLAN		8" WATER MAIN DUCTILE IRON PIPE ANSI CLASS 52, MECHANICAL JOINTS AND FITTINGS, AS PER PLAN	12" WATER MAIN DUCTILE IRON PIPE ANSI CLASS 52, MECHANICAL JOINTS AND FITTINGS, AS PER PLAN	14" WATER MAIN DUCTILE IRON PIPE ANSI CLASS 52, MECHANICAL JOINTS AND FITTINGS, AS PER PLAN	16" WATER MAIN DUCTILE IRON PIPE ANSI CLASS 52, MECHANICAL JOINTS AND FITTINGS, AS PER PLAN	6" FIRE HYDRANT, AS PER PLAN	6" GATE VALVE AND VALVE BOX	FIRE HYDRANT REMOVED, AS PER PLAN	FIRE HYDRANT ADJUSTED TO GRADE	VALVE BOX ADJUSTED TO GRADE	VALVE BOX ADJUSTED TO GRADE	SERVICE BOX ADJUSTED TO GRADE	WATER WORK, MISC.: 14" CUTTING IN SLEEVE, VALVE WITH VALVE BOX	WATER WORK, MISC.: WATER MAIN ABANDONED	
FROM	TO	FT	FT	FT	FT	FT	FT	FT	FT	EACH	EACH	EACH	EACH	EACH	EACH	EACH	EACH	EACH	
FH-1	82	S.R. 14	27+23.38		LT.														
FH-2	83	S.R. 14	31+75.73		RT.														
FH-3	83	S.R. 14	34+80.82		RT.														
FH-4	84	S.R. 14	37+01.45		RT.														
FH-5	84	S.R. 14	37+05.94		RT.		3				1	1							
FH-6	84	S.R. 14	39+51.00		RT.		3				1	1							
FH-6A	84	S.R. 14	39+55.22		RT.								1						
FH-6B	85	S.R. 14	44+01.91		RT.								1						
FH-6C	85	S.R. 14	44+08.00		RT.		8				1	1							
FH-7	86	S.R. 14	47+54.28		RT.								1						
FH-7A	86	S.R. 14	47+60.00		RT.		4				1	1							
FH-8	88	S.R. 14	57+45.20		RT.								1						
FH-9	88	S.R. 14	57+50.15		RT.								1						
FH-10	89	S.R. 14	62+50.20		RT.								1						
FH-11	89	S.R. 14	62+55.00		RT.		4				1	1							
FH-12	90	S.R. 14	67+70.22		RT.								1						
FH-13	90	S.R. 14	67+76.79		RT.						1		1						
FH-14	91	S.R. 14	72+21.31		RT.		7				1	1							
FH-15	91	S.R. 14	72+26.30		RT.								1						
FH-16	92	S.R. 14	77+24.83		RT.						1		1						
FH-17	92	S.R. 14	77+30.83		RT.								1						
FH-18	93	S.R. 14	82+54.33		RT.								1						
FH-19	93	S.R. 14	82+60.01		RT.		22				1	1							
FH-20	94	S.R. 14	87+39.70		RT.		4				1	1							
FH-21	94	S.R. 14	87+46.68		RT.								1						
FH-22	96	S.R. 14	97+51.90		RT.								1						
FH-23	96	S.R. 14	97+58.00		RT.		5				1	1							
FH-23A	97	S.R. 14	101+50.00		RT.						1		1						
FH-24	99	S.R. 14	112+42.66		RT.								1						
FH-25	99	S.R. 14	112+49.96		RT.		4				1	1							
FH-26	100	S.R. 14	116+61.33		RT.								1						
FH-27	100	S.R. 14	116+79.24		RT.						1		1						
WL-1	83 - 87	S.R. 14	34+97.00	53+50.00	RT.					1850								2	
WL-2	83 - 84	S.R. 14	34+98.00	35+62.00	RT.														63
WL-3	84 - 85	S.R. 14	35+62.00	41+00.00	RT.	535													
WL-4	85	S.R. 14	41+00.00	43+47.00	RT.														246
WL-5	85	S.R. 14	43+47.00	43+53.00	RT.	6													
WL-6	85 - 86	S.R. 14	43+53.00	45+77.00	RT.														224
WL-7	86	S.R. 14	45+77.00	45+86.00	RT.	9													
WL-8	86	S.R. 14	45+86.00	48+22.00	RT.														236
WL-9	86	S.R. 14	48+22.00	48+28.00	RT.	6													
WL-10	86 - 87	S.R. 14	48+28.00	52+55.00	RT.														427
WL-11	87	S.R. 14	52+55.00	53+50.00	RT.	95													
WL-12	88	S.R. 14	55+02.48	55+22.67	RT.					16			5					1	
WL-12A	88 - 100	S.R. 14	55+28.20	116+73.14	RT.														6145
WL-13	89	S.R. 14	64+83.34	64+83.60	RT.			5											
WL-14	91	S.R. 14	70+34.50	70+34.50	RT.				8										
WL-15	93	S.R. 14	80+09.28	80+09.41	RT.			5											
WL-16	94	S.R. 14	85+08.30	85+13.02	RT.		11												
WL-17	95	S.R. 14	90+14.50	90+16.91	RT.		4												
WL-18	96	S.R. 14	95+24.89	95+24.97	RT.			4											
WL-19	100	S.R. 14	116+74.23	116+77.44	RT.								6						
WV-1	82	S.R. 14	27+56.00		RT.														
WV-2	83	S.R. 14	31+48.92		LT.														1
WV-3	83	S.R. 14	31+76.06		RT.														1
WV-4	83	S.R. 14	34+51.85		RT.														1
WV-5	83	S.R. 14	34+97.00		RT.														1

SUBTOTALS CARRIED TO SHEET NO. 184

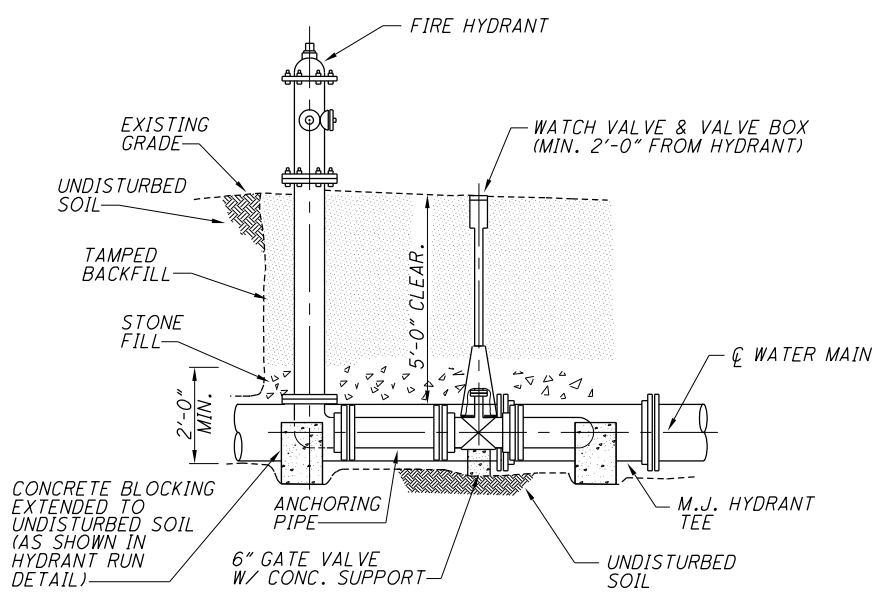
651 79 14 8 1866 11 15 10 19 3 2 1 1 4 7341

WATER WORK SUBSUMMARY

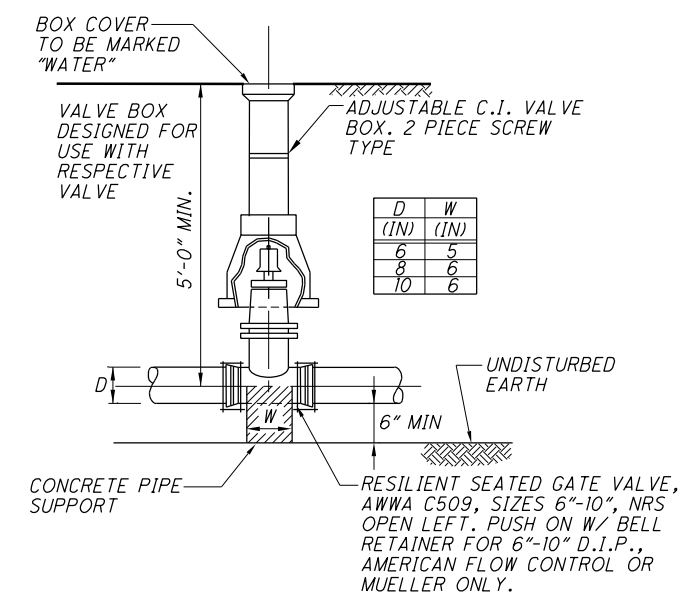
POR-14-3.65



HYDRANT RUN & INSTALLATION
NOT TO SCALE



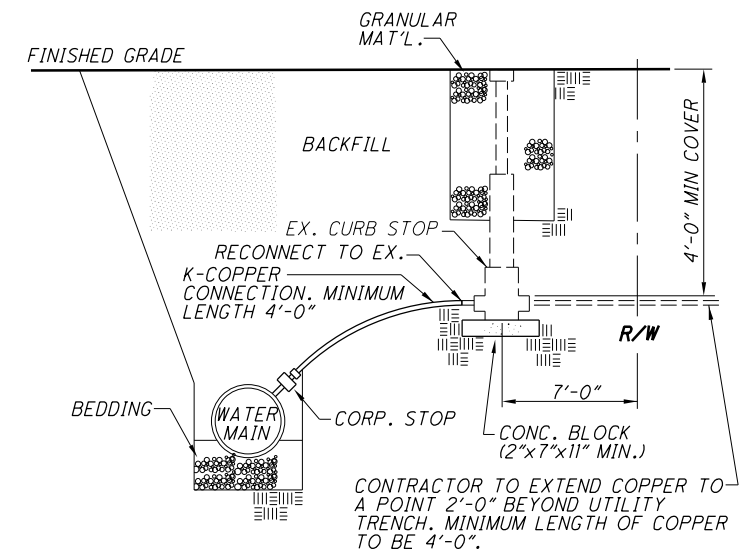
HYDRANT PARALLEL TO WATER MAIN
NOT TO SCALE



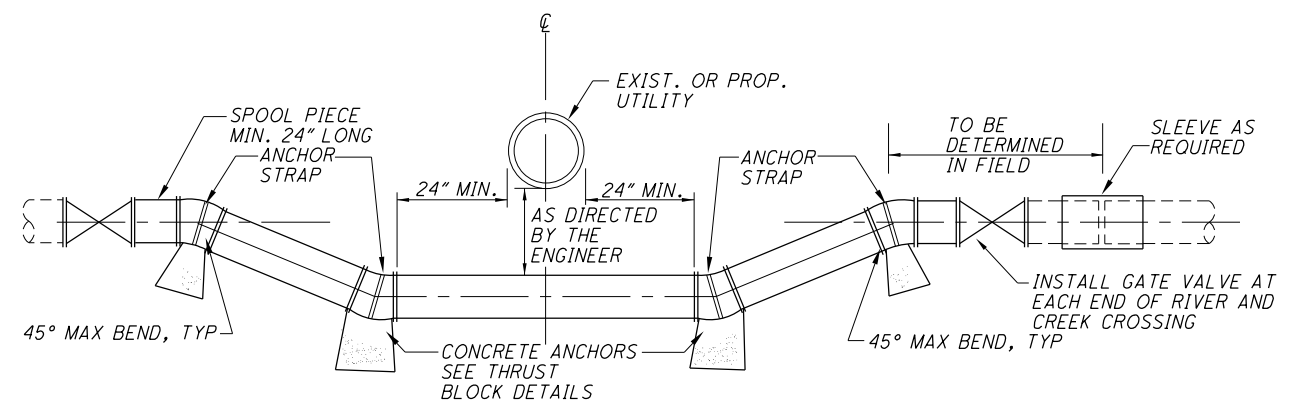
WATER VALVE DETAIL
NOT TO SCALE

NOTES:

- 2" AND SMALLER WATERLINES TO BE "K" COPPER.
- 3" AND LARGER WATERLINES TO BE CLASS 52 DUCTILE IRON PIPE.
- FULL BODIED OR COMPACT FITTINGS, MECHANICAL JOINT, FULL FACED GASKETS.
- CURB STOPS: BALL VALVE FLARE x FLARE AS SPECIFIED.
- CORPORATION STOPS: BALL VALVE CC x FLARE. AS SPECIFIED.
- CURB BOXES: 94E, 2 1/2" BUFFALO STYLE BOX, SCREW TYPE.
- VALVE BOXES: BUFFALO STYLE, SCREW TYPE, 5 1/4".
- VALVES: 3" AND LARGER: MUELLER OR AMERICAN FLOW CONTROL. RESILIENT SEAT, OPEN LEFT.
- WATER MAIN ROAD CROSSINGS/BORINGS: CARRIER PIPE REQUIRED PER AWWA C600-93, SECTION 6.2.
- HYDRANTS: MUELLER #A423 OR AMERICAN DARLING #B-84-BIS 1/4". NST. 1 1/2" POINT TO FLAT OPERATING NUT, PAINTED INDIGO BLUE AND YELLOW, 18" FROM CENTER OF STEAMER NUT TO FINISH GRADE.
- HYDRANT COVER: WASHED #57 GRAVEL, MINIMUM DEPTH ONE FOOT COVER. NO LIMESTONE.
- PIPE BEDDING: #57 GRAVEL FOR DUCTILE LINES. MASON SAND FOR COPPER LINES. NO LIMESTONE.
- PIPE COVER: MASON (CONCRETE SAND) CONFORMING TO ODOT CMS 703.02A. 6" MINIMUM COVER FOR COPPER LINES.
- THRUST BLOCKING: CLASS "OC1" POURED CONCRETE, MINIMUM 4,000 PSI. HYDRANTS TO HAVE 6"x6"x12" TREATED LUMBER BETWEEN HYDRANT AND CONCRETE.
- ALL PARTS AND ACCESSORIES TO BE DOMESTIC MADE.
- RECYCLED CONCRETE NOT PERMITTED TO BE USED AS FILL OR COVER ON CITY UTILITIES OR WITHIN RIGHT-OF-WAY.



SERVICE CONNECTION
NOT TO SCALE



UTILITY CROSSING DETAIL
NOT TO SCALE

CITY OF STREETSBORO WATER WORK DETAILS

#FILES: 5:04:55 PM 2/19/2021 3:46:55 PM mthomas
 #DAYS: 2/19/2021 3:46:55 PM
 #TIMES: 2/19/2021 3:46:55 PM
 #DATE: 2/19/2021 3:46:55 PM
 #TIME: 2/19/2021 3:46:55 PM
 #USER: mthomas

NOTE: DO NOT INSTALL CURB BOX IN PAVEMENT, SIDEWALKS, DRIVEWAYS OR APRONS UNLESS NO OTHER OPTION EXISTS. ANY CHANGE MUST BE APPROVED BY CITY OF STREETSBORO.

PORTAGE COUNTY
STREETSBORO TOWNSHIP
RANGE 9 WEST, TOWNSHIP 4 NORTH
LOT 57
CONNECTICUT WESTERN RESERVE
CITY OF STREETSBORO

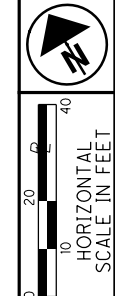
BRUGMANN ACRES
P.B. 7, PG. 23

BRUGMANN ACRES
P.B. 7, PG. 23

10
DG STRATEGIC II, LLC,
A TENNESSEE LIMITED
LIABILITY COMPANY
35-057-00-00-039.005
9004 S.R. 14
COMMERCIAL

13
SEENO, ANDREWS & McCURDY
ET AL PARTNERS,
AN OHIO GENERAL PARTNERSHIP
35-057-00-00-039.001
8990 S.R. 14
COMMERCIAL

© R/W S.R. 14
P.I. Sta. 40+44.33
 $\Delta = 10^\circ 43' 00''$ (RT)
 $Dc = 2^\circ 00' 00''$
 $R = 2,864.79'$
 $Ls = 200.00'$
 $\theta s = 2^\circ 00' 00''$
 $LT = 133.34'$
 $ST = 66.67'$
 $x = 199.98'$
 $y = 2.33'$
 $k = 100.00'$
 $p = 0.58'$
 $\Delta c = 6^\circ 43' 00''$ (RT)
 $Lc = 335.83'$
 $Ts = 368.75'$
 $E = 13.16'$
 $C = 335.64'$
 $C1 = C2 = 199.99'$
 $C.B.1 = S 58^\circ 19' 25'' E$
 $C.B. = S 53^\circ 37' 55'' E$
 $C.B.2 = N 48^\circ 56' 25'' W$



PID NO. 102234
R/W DESIGNER NLC
R/W REVIEWER WCL

RIGHT OF WAY TOPO SHEET
STA. 35+00 TO STA. 40+00

POR-14-3.65

19 / 52
248
281

8
KM PROPERTIES OF OHIO, LLC,
AN OHIO LIMITED
LIABILITY COMPANY
35-056-10-00-039.000
S.R. 14
COMMERCIAL

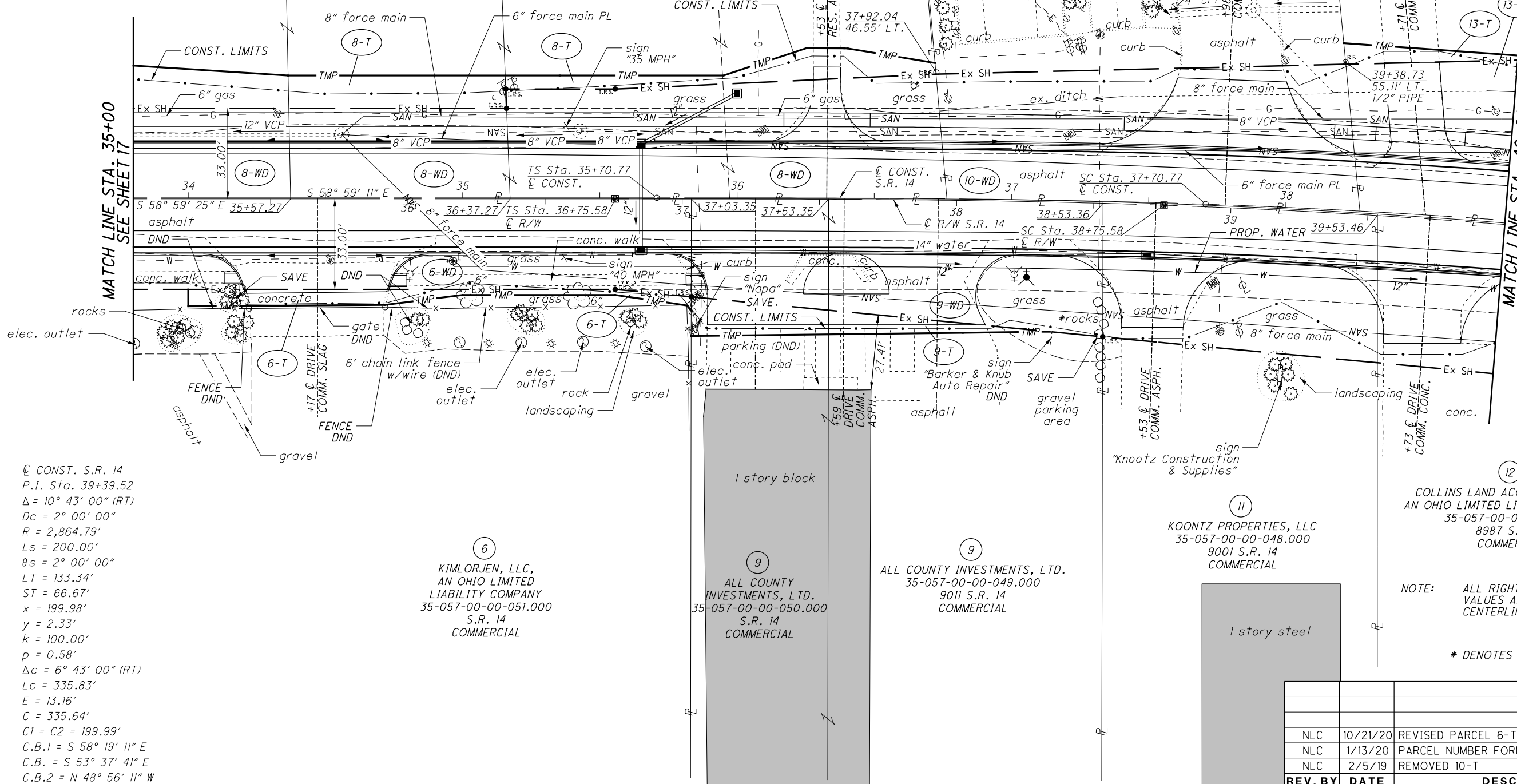
8
KM PROPERTIES OF OHIO, LLC,
AN OHIO LIMITED
LIABILITY COMPANY
35-056-10-00-040.000
S.R. 14
COMMERCIAL

8
KM PROPERTIES OF OHIO, LLC,
AN OHIO LIMITED
LIABILITY COMPANY
35-056-10-00-041.000
9016 S.R. 14
COMMERCIAL

8
KM PROPERTIES OF OHIO, LLC,
AN OHIO LIMITED
LIABILITY COMPANY
35-056-10-00-041.000
9016 S.R. 14
COMMERCIAL

MATCH LINE STA. 35+00
SEE SHEET 17

MATCH LINE STA. 40+00
SEE SHEET 21



© CONST. S.R. 14
P.I. Sta. 39+39.52
 $\Delta = 10^\circ 43' 00''$ (RT)
 $Dc = 2^\circ 00' 00''$
 $R = 2,864.79'$
 $Ls = 200.00'$
 $\theta s = 2^\circ 00' 00''$
 $LT = 133.34'$
 $ST = 66.67'$
 $x = 199.98'$
 $y = 2.33'$
 $k = 100.00'$
 $p = 0.58'$
 $\Delta c = 6^\circ 43' 00''$ (RT)
 $Lc = 335.83'$
 $E = 13.16'$
 $C = 335.64'$
 $C1 = C2 = 199.99'$
 $C.B.1 = S 58^\circ 19' 11'' E$
 $C.B. = S 53^\circ 37' 41'' E$
 $C.B.2 = N 48^\circ 56' 11'' W$

6
KIMLORJEN, LLC,
AN OHIO LIMITED
LIABILITY COMPANY
35-057-00-00-051.000
S.R. 14
COMMERCIAL

9
ALL COUNTY
INVESTMENTS, L TD.
35-057-00-00-050.000
S.R. 14
COMMERCIAL

9
ALL COUNTY INVESTMENTS, L TD.
35-057-00-00-049.000
9011 S.R. 14
COMMERCIAL

11
KOONTZ PROPERTIES, LLC
35-057-00-00-048.000
9001 S.R. 14
COMMERCIAL

12
COLLINS LAND ACQUISITION, LLC,
AN OHIO LIMITED LIABILITY COMPANY
35-057-00-00-047.008
8987 S.R. 14
COMMERCIAL

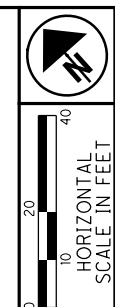
NOTE: ALL RIGHT OF WAY STATION
VALUES ARE BASED ON THE
CENTERLINE OF RIGHT OF WAY

* DENOTES ENCROACHMENT

REV. BY	DATE	DESCRIPTION
NLC	10/21/20	REVISED PARCEL 6-T
NLC	1/13/20	PARCEL NUMBER FORMAT
NLC	2/5/19	REMOVED 10-T
DATE COMPLETED: 12/3/2018		

#FILES
#DAYS
#TIMES
#USERS

PORTAGE COUNTY
STREETSBORO TOWNSHIP
RANGE 9 WEST, TOWNSHIP 4 NORTH
LOT 57
CONNECTICUT WESTERN RESERVE
CITY OF STREETSBORO



PID NO. **102234**
R/W DESIGNER: NLC
R/W REVIEWER: WCL

RIGHT OF WAY TOPO SHEET
STA. 40+00 TO STA. 45+00

POR-14-3.65

21 / 52

250
281

© R/W S.R. 14
P.I. Sta. 40+44.33
 $\Delta = 10^\circ 43' 00''$ (RT)
 $Dc = 2^\circ 00' 00''$
 $R = 2,864.79'$
 $Ls = 200.00'$
 $\theta s = 2^\circ 00' 00''$
 $LT = 133.34'$
 $ST = 66.67'$
 $x = 199.98'$
 $y = 2.33'$
 $k = 100.00'$
 $p = 0.58'$
 $\Delta c = 6^\circ 43' 00''$ (RT)
 $Lc = 335.83'$
 $Ts = 368.75'$
 $E = 13.16'$
 $C = 335.64'$
 $C1 = C2 = 199.99'$
 $C.B.1 = S 58^\circ 19' 25'' E$
 $C.B. = S 53^\circ 37' 55'' E$
 $C.B.2 = N 48^\circ 56' 25'' W$ grass

© CONST. S.R. 14
P.I. Sta. 39+39.52
 $\Delta = 10^\circ 43' 00''$ (RT)
 $Dc = 2^\circ 00' 00''$
 $R = 2,864.79'$
 $Ls = 200.00'$
 $\theta s = 2^\circ 00' 00''$
 $LT = 133.34'$
 $ST = 66.67'$
 $x = 199.98'$
 $y = 2.33'$
 $k = 100.00'$
 $p = 0.58'$
 $\Delta c = 6^\circ 43' 00''$ (RT)
 $Lc = 335.83'$
 $E = 13.16'$
 $C = 335.64'$
 $C1 = C2 = 199.99'$
 $C.B.1 = S 58^\circ 19' 11'' E$
 $C.B. = S 53^\circ 37' 41'' E$
 $C.B.2 = N 48^\circ 56' 11'' W$

15
MATT INVESTMENTS, L.L.C.,
AN OHIO LIMITED LIABILITY COMPANY
35-057-00-00-047.002
S.R. 14
COMMERCIAL

16
STEPHENS PAIN
RECOVERY CENTER, INC.,
AN OHIO CORPORATION
35-057-00-00-047.014
8961 S.R. 14
COMMERCIAL

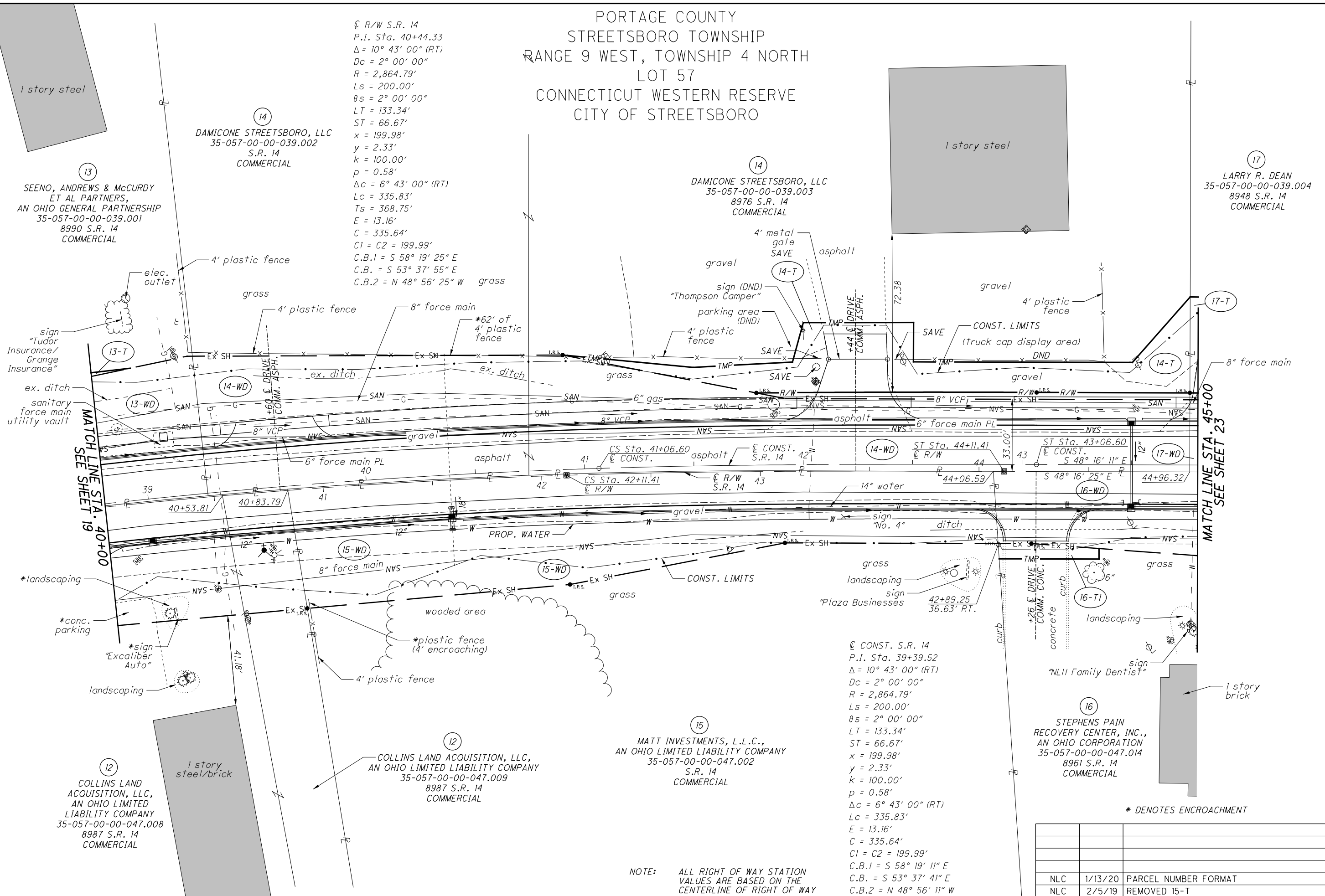
12
COLLINS LAND ACQUISITION, LLC,
AN OHIO LIMITED LIABILITY COMPANY
35-057-00-00-047.009
8987 S.R. 14
COMMERCIAL

14
DAMICONE STREETSBORO, LLC
35-057-00-00-039.002
S.R. 14
COMMERCIAL

14
DAMICONE STREETSBORO, LLC
35-057-00-00-039.003
8976 S.R. 14
COMMERCIAL

17
LARRY R. DEAN
35-057-00-00-039.004
8948 S.R. 14
COMMERCIAL

13
SEENO, ANDREWS & McCURDY
ET AL PARTNERS,
AN OHIO GENERAL PARTNERSHIP
35-057-00-00-039.001
8990 S.R. 14
COMMERCIAL



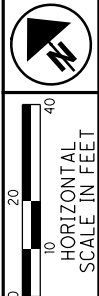
NOTE: ALL RIGHT OF WAY STATION VALUES ARE BASED ON THE CENTERLINE OF RIGHT OF WAY

* DENOTES ENCROACHMENT

REV. BY	DATE	DESCRIPTION
NLC	1/13/20	PARCEL NUMBER FORMAT
NLC	2/5/19	REMOVED 15-T
DATE COMPLETED: 12/3/2018		

#FILES
#DAYS
#TIMES
#USERS

PORTAGE COUNTY, STREETSBORO TOWNSHIP
 RANGE 9 WEST, TOWNSHIP 4 NORTH, LOT 57
 CONNECTICUT WESTERN RESERVE
 CITY OF STREETSBORO



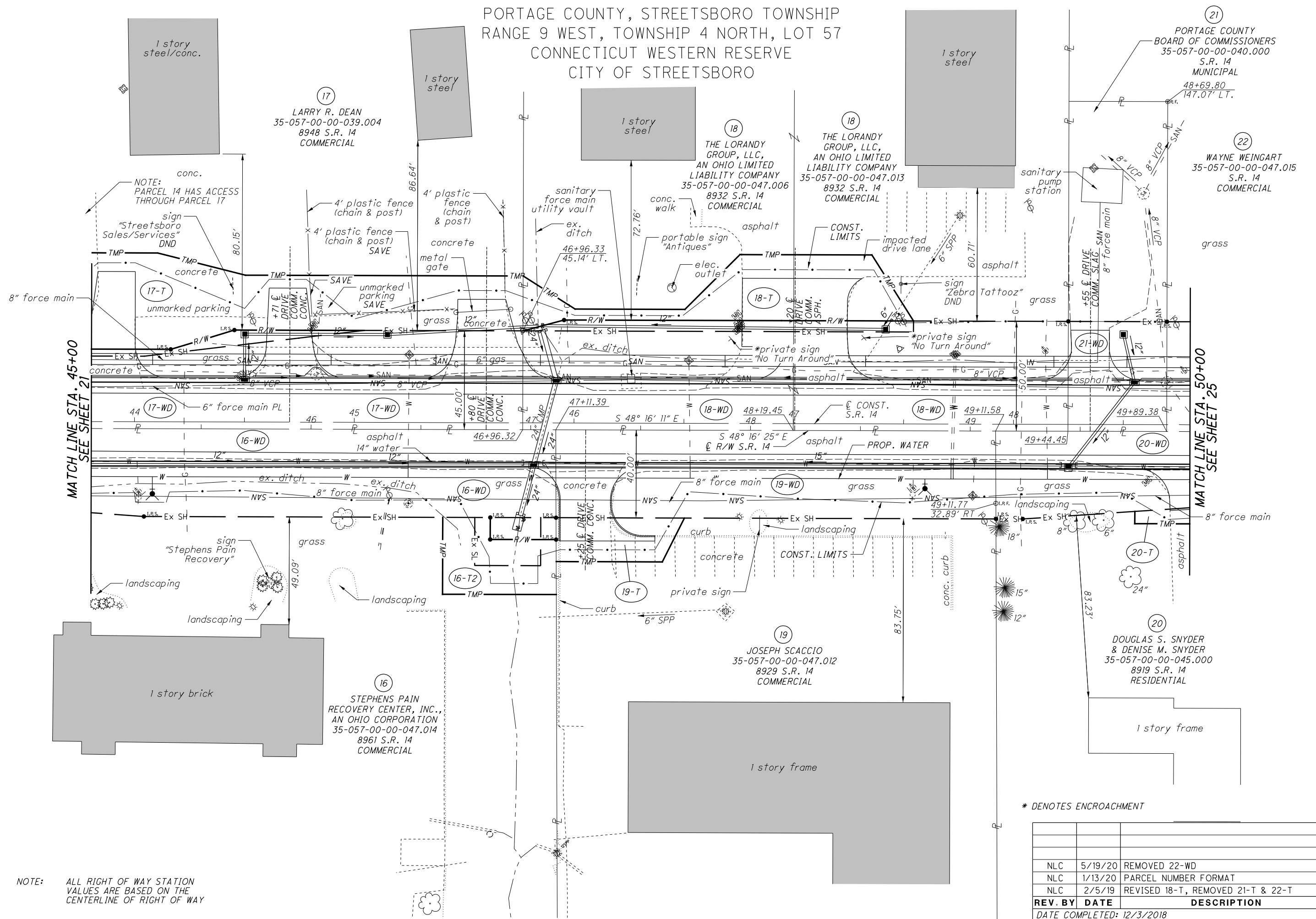
PID NO. **102234**
 R/W DESIGNER NLC
 R/W REVIEWER WCL

RIGHT OF WAY TOPO SHEET
STA. 45+00 TO STA. 50+00

POR-14-3.65

23 / 52

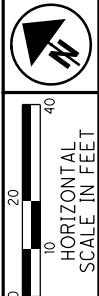
252
 281



REV. BY	DATE	DESCRIPTION
NLC	5/19/20	REMOVED 22-WD
NLC	1/13/20	PARCEL NUMBER FORMAT
NLC	2/5/19	REVISED 18-T, REMOVED 21-T & 22-T
DATE COMPLETED: 12/3/2018		

#FILES#
 #DAYS#
 #TIMES#
 #USERS#

PORTAGE COUNTY
STREETSBORO TOWNSHIP
RANGE 9 WEST, TOWNSHIP 4 NORTH
LOT 68
CONNECTICUT WESTERN RESERVE
CITY OF STREETSBORO



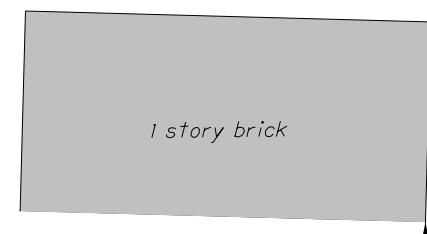
PID NO. 102234
R/W DESIGNER NLC
R/W REVIEWER WCL

RIGHT OF WAY TOPO SHEET
STA. 85+00 TO STA. 90+00

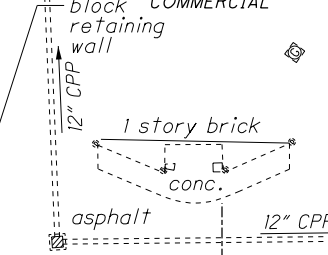
POR-14-3.65

39 / 52
268
281

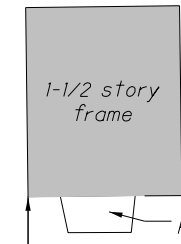
52
JAMES M. SHUKYS
35-067-00-00-002.000
8660 S.R. 14
COMMERCIAL



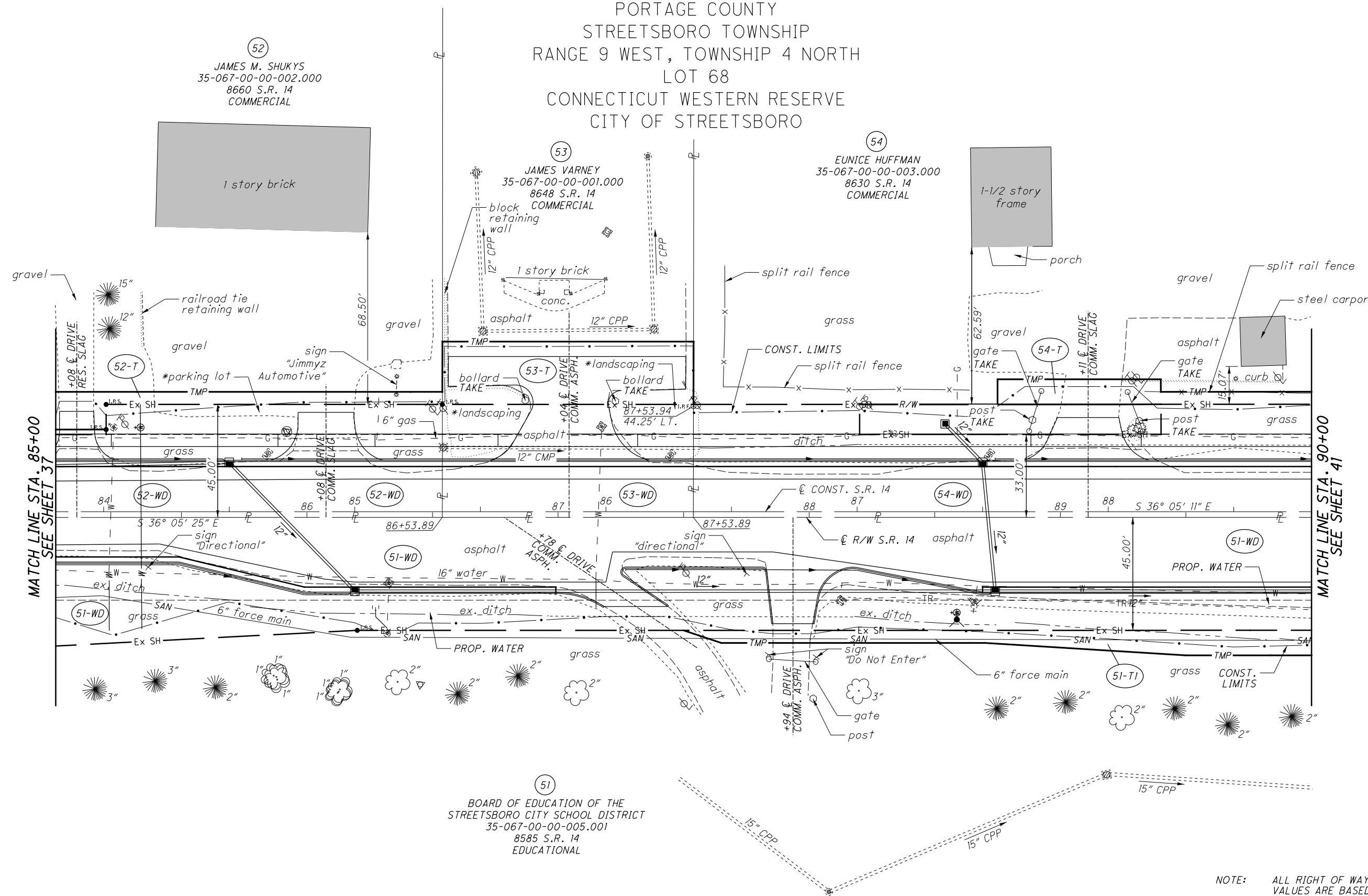
53
JAMES VARNEY
35-067-00-00-001.000
8648 S.R. 14
COMMERCIAL



54
EUNICE HUFFMAN
35-067-00-00-003.000
8630 S.R. 14
COMMERCIAL



51
BOARD OF EDUCATION OF THE
STREETSBORO CITY SCHOOL DISTRICT
35-067-00-00-005.001
8585 S.R. 14
EDUCATIONAL



MATCH LINE STA. 85+00
SEE SHEET 37

MATCH LINE STA. 90+00
SEE SHEET 41

NOTE: ALL RIGHT OF WAY STATION VALUES ARE BASED ON THE CENTERLINE OF RIGHT OF WAY

NLC	1/13/20	PARCEL NUMBER FORMAT
REV. BY	DATE	DESCRIPTION
DATE COMPLETED: 12/3/2018		

#FILES
#DAYS
#TIMES
#USERS