

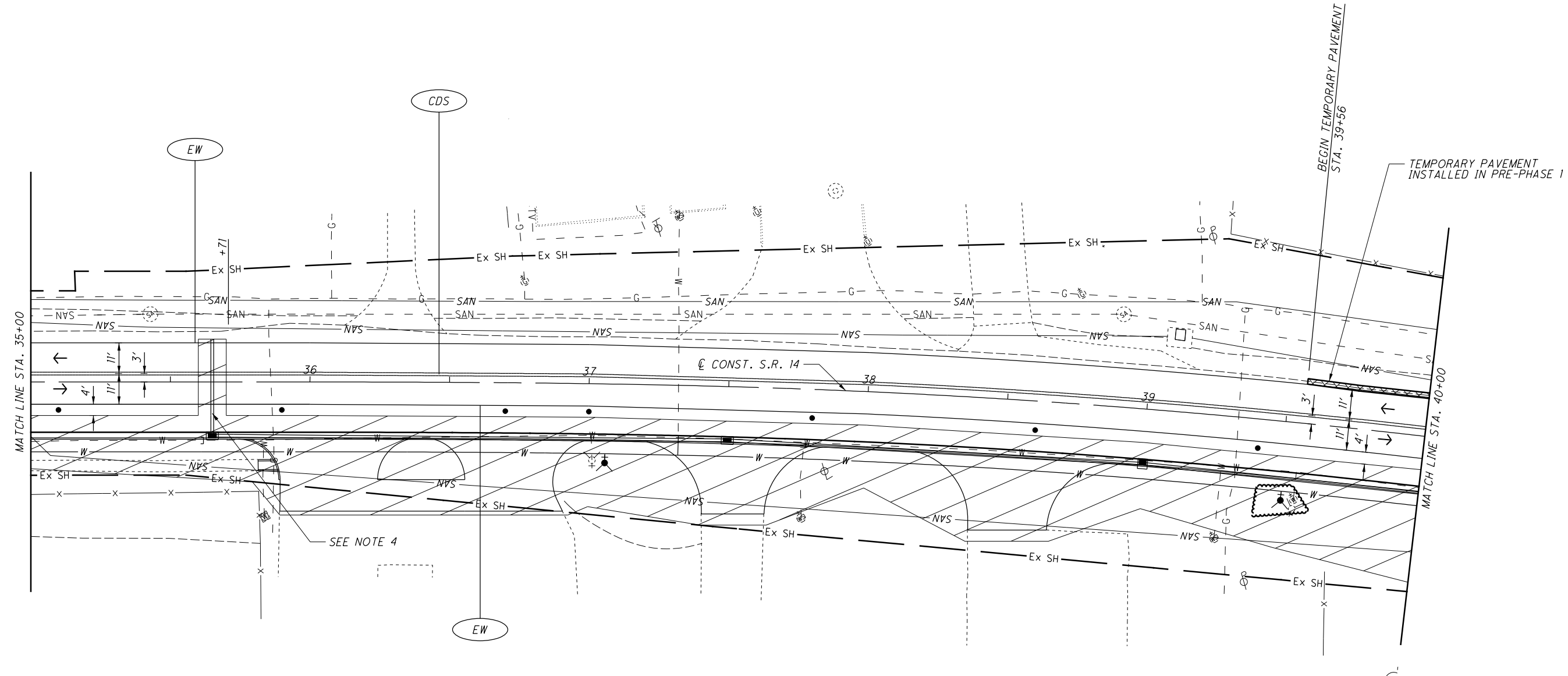
O:\2017\2017114\POR\02234\Design\M01\Sheets\02234mp003.dgn Design 2/19/2021 4:34:08 PM mthomas



CALCULATED
SLB
CHECKED
LOB

MAINTENANCE OF TRAFFIC PLAN - PHASE 1
STA. 35+00 TO STA. 40+00

POR-14-3.65



6

REVISIONS		
DATE	REV.	DESCRIPTION
2-19-21	ADDENDUM #6	FIRE HYDRANT

MAINTENANCE OF TRAFFIC NOTES:

1. THE CONTRACTOR SHALL COVER OR REMOVE EXISTING CONFLICTING SIGNING AND COVER OR REMOVE EXISTING CONFLICTING PAVEMENT MARKINGS PRIOR TO CONSTRUCTION.
2. THE CONTRACTOR SHALL MAINTAIN ACCESS TO ALL RESIDENTIAL AND COMMERCIAL PROPERTIES AT ALL TIMES.
3. FOR MAINTENANCE OF TRAFFIC LEGEND, SEE SHEET 27.
4. PERFORM STORM SEWER CROSSING DURING OFF-PEAK HOURS. MAINTAIN TRAFFIC IN ACCORDANCE WITH SCD MT-97.10.

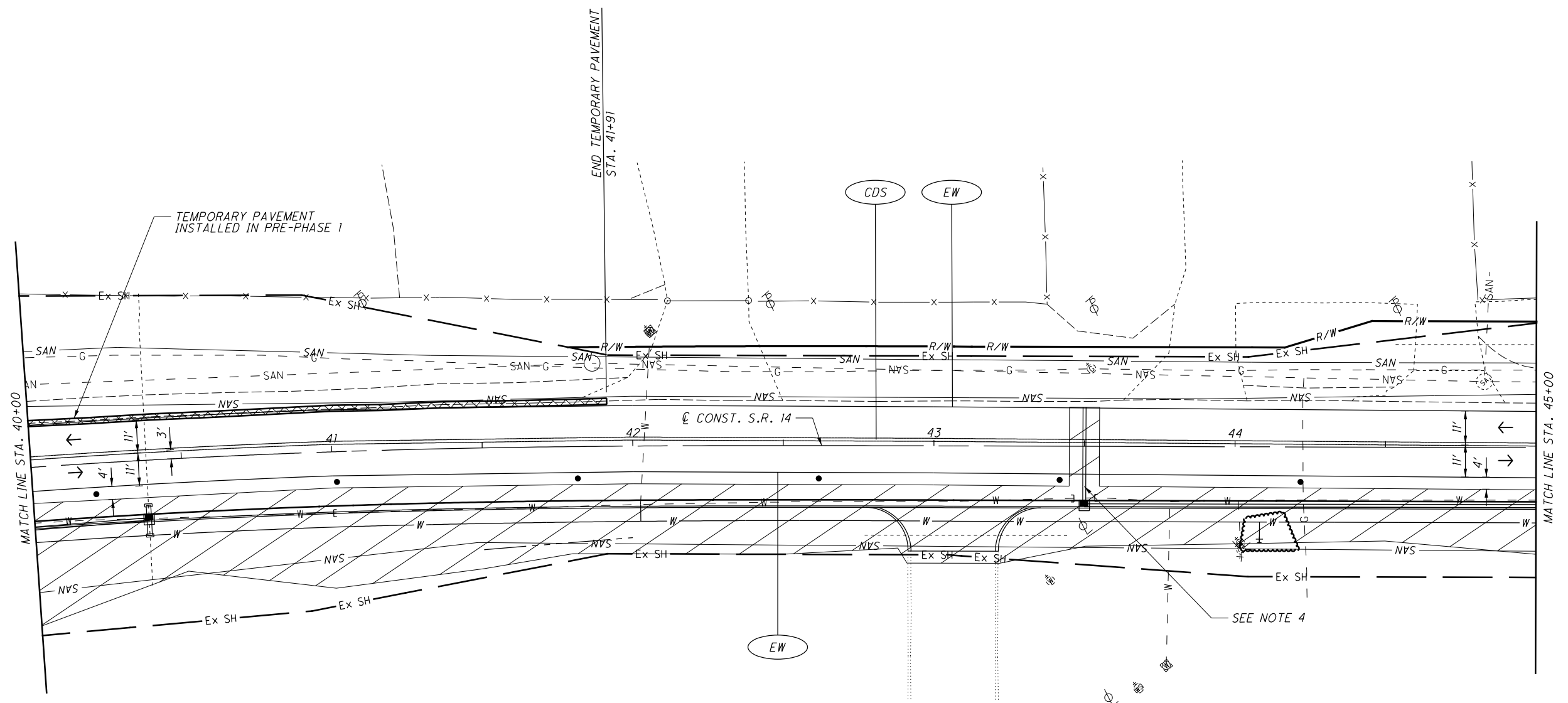


CALCULATED
SLB
CHECKED
LOB

MAINTENANCE OF TRAFFIC PLAN - PHASE 1
STA. 40+00 TO STA. 45+00

POR-14-3.65

30
281



REVISIONS		
DATE	REV.	DESCRIPTION
2-19-21	ADDENDUM #6	FIRE HYDRANT

6

MAINTENANCE OF TRAFFIC NOTES:

1. THE CONTRACTOR SHALL COVER OR REMOVE EXISTING CONFLICTING SIGNING AND COVER OR REMOVE EXISTING CONFLICTING PAVEMENT MARKINGS PRIOR TO CONSTRUCTION.
2. THE CONTRACTOR SHALL MAINTAIN ACCESS TO ALL RESIDENTIAL AND COMMERCIAL PROPERTIES AT ALL TIMES.
3. FOR MAINTENANCE OF TRAFFIC LEGEND, SEE SHEET 27.
4. PERFORM STORM SEWER CROSSING DURING OFF-PEAK HOURS. MAINTAIN TRAFFIC IN ACCORDANCE WITH SCD MT-97.10.

O:\2017\2017114\POR\02234\Design\M01\Sheets\02234mp004.dgn Design 2/19/2021 4:36:39 PM mthomas

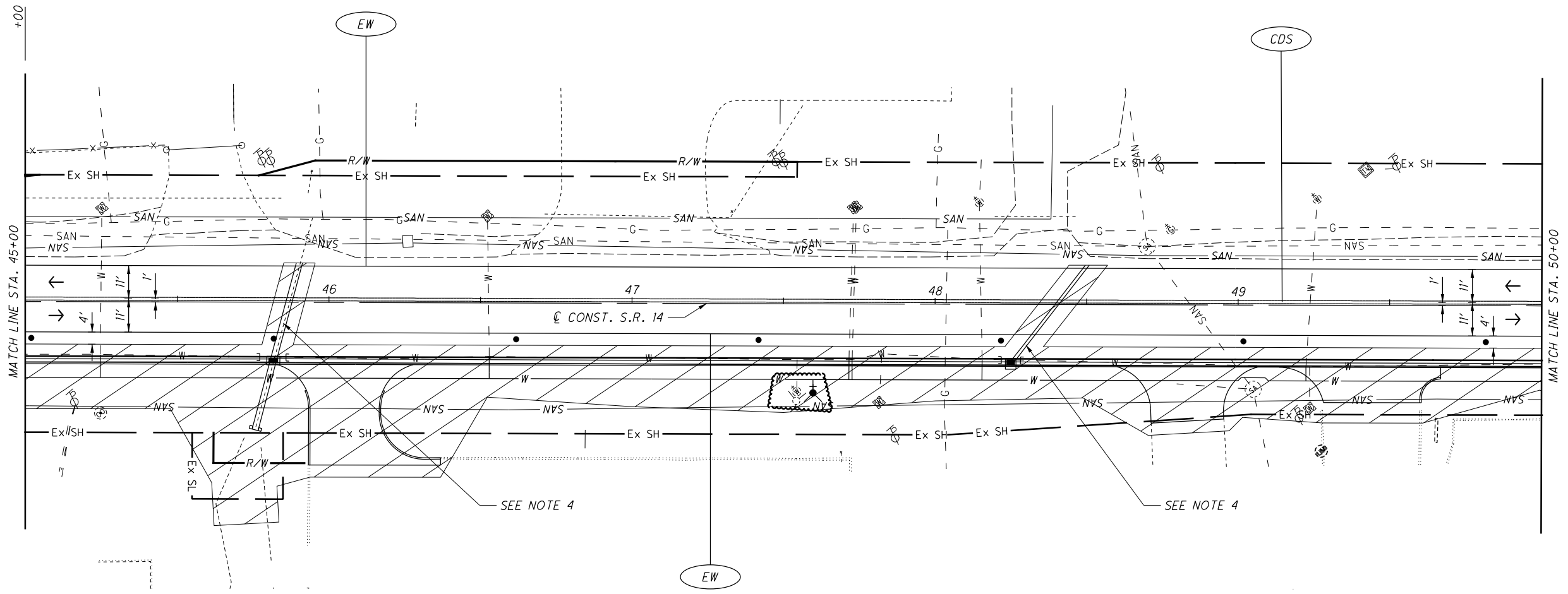
O:\2017\2017114\POR\02234\Design\M01\Sheets\02234mp005.dgn Design 2/19/2021 4:50:27 PM mthomas

CALCULATED
SLB
CHECKED
LOB

0 20 40
HORIZONTAL
SCALE IN FEET

MAINTENANCE OF TRAFFIC PLAN - PHASE 1
STA. 45+00 TO STA. 50+00

POR-14-3.65



SEE NOTE 4

SEE NOTE 4

MAINTENANCE OF TRAFFIC NOTES:

1. THE CONTRACTOR SHALL COVER OR REMOVE EXISTING CONFLICTING SIGNING AND COVER OR REMOVE EXISTING CONFLICTING PAVEMENT MARKINGS PRIOR TO CONSTRUCTION.
2. THE CONTRACTOR SHALL MAINTAIN ACCESS TO ALL RESIDENTIAL AND COMMERCIAL PROPERTIES AT ALL TIMES.
3. FOR MAINTENANCE OF TRAFFIC LEGEND, SEE SHEET 27.
4. PERFORM STORM SEWER CROSSING DURING OFF-PEAK HOURS. MAINTAIN TRAFFIC IN ACCORDANCE WITH SCD MT-97.10.

REVISIONS		
DATE	REV.	DESCRIPTION
2-19-21	ADDENDUM #6	FIRE HYDRANT



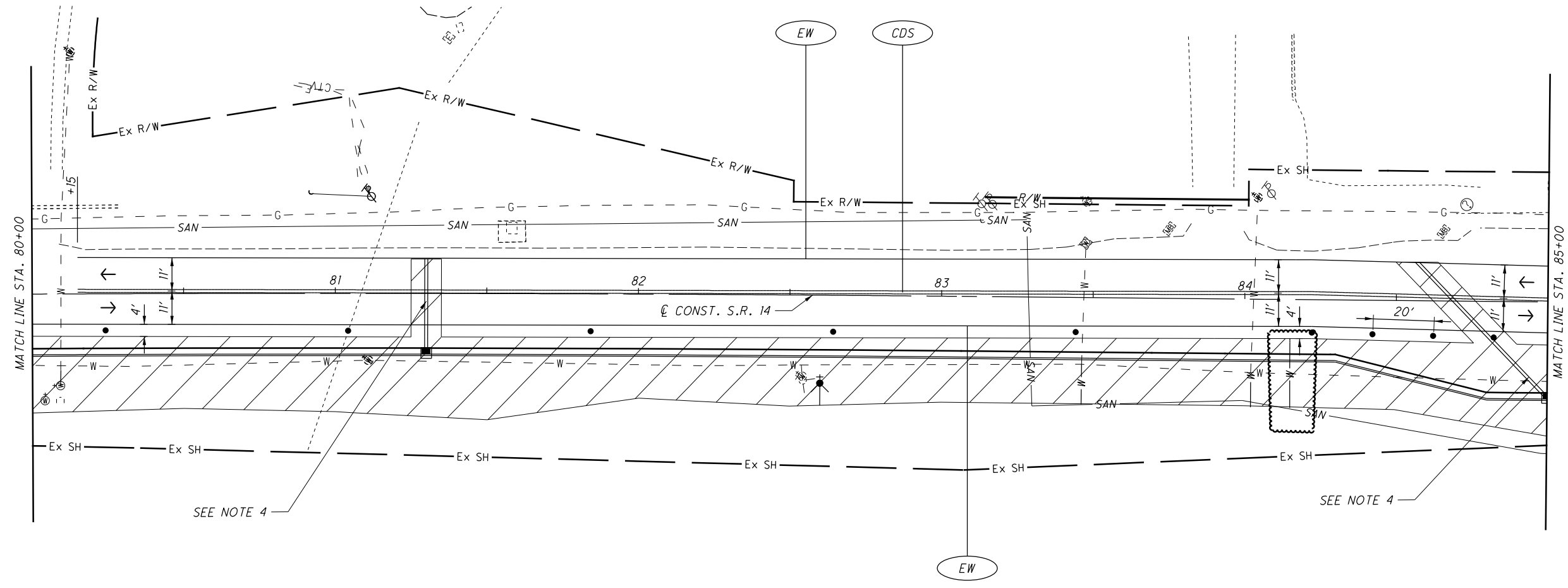
O:\2017\2017114\POR\02234\Design\M01\Sheets\02234mp02.dgn Design 2/19/2021 4:52:44 PM mthomas



CALCULATED
SLB
CHECKED
LOB

MAINTENANCE OF TRAFFIC PLAN - PHASE 1
STA. 80+00 TO STA. 85+00

POR-14-3.65



SEE NOTE 4

SEE NOTE 4

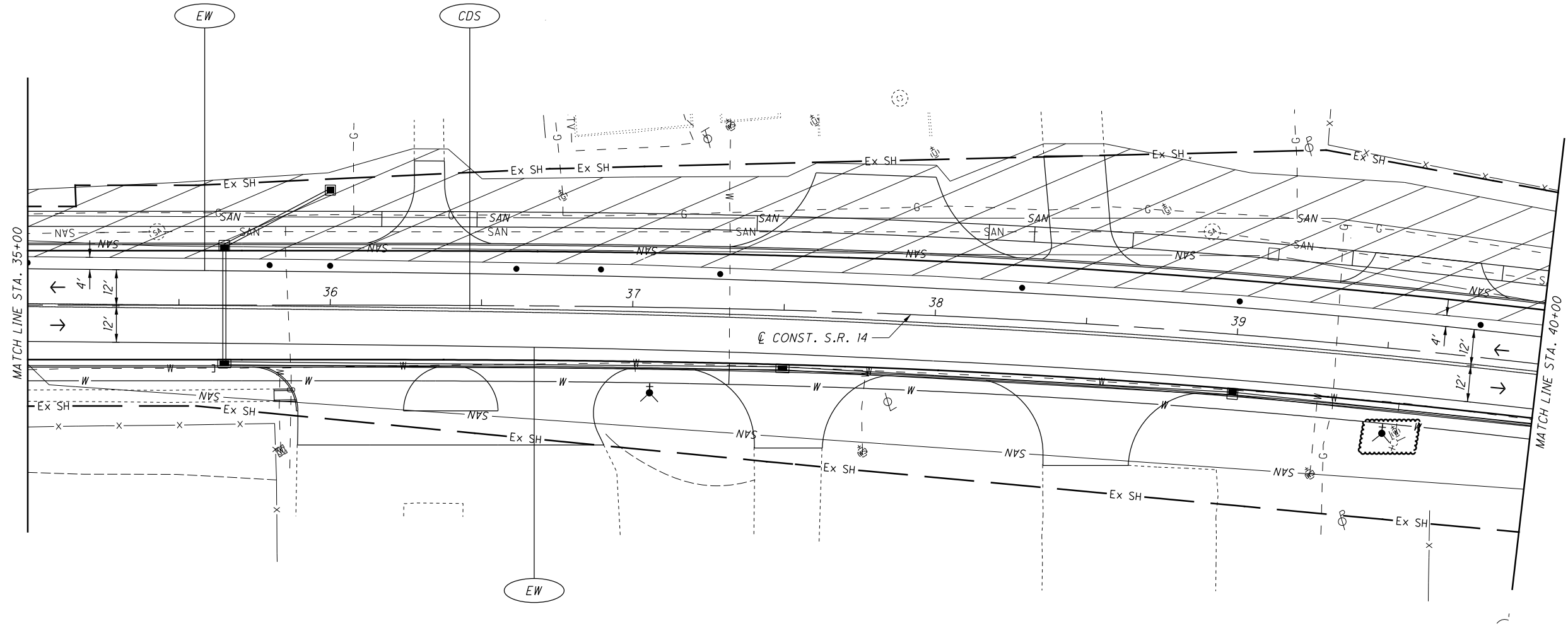
6

REVISIONS		
DATE	REV.	DESCRIPTION
2-19-21	ADDENDUM #6	WATER SERVICE

MAINTENANCE OF TRAFFIC NOTES:

1. THE CONTRACTOR SHALL COVER OR REMOVE EXISTING CONFLICTING SIGNING AND COVER OR REMOVE EXISTING CONFLICTING PAVEMENT MARKINGS PRIOR TO CONSTRUCTION.
2. THE CONTRACTOR SHALL MAINTAIN ACCESS TO ALL RESIDENTIAL AND COMMERCIAL PROPERTIES AT ALL TIMES.
3. FOR MAINTENANCE OF TRAFFIC LEGEND, SEE SHEET 27.
4. PERFORM STORM SEWER CROSSING DURING OFF-PEAK HOURS. MAINTAIN TRAFFIC IN ACCORDANCE WITH SCD MT-97.10.

O:\2017\2017114\POR\02234\Design\M01\Sheets\02234mp053.dgn Design 2/19/2021 4:55:01PM mthomas



CALCULATED
SLB
CHECKED
LOB

0 20 40
HORIZONTAL
SCALE IN FEET

MAINTENANCE OF TRAFFIC PLAN - PHASE 3
STA. 35+00 TO STA. 40+00

POR-14-3.65

6

REVISIONS		
DATE	REV.	DESCRIPTION
2-19-21	ADDENDUM #6	FIRE HYDRANT

MAINTENANCE OF TRAFFIC NOTES:

1. THE CONTRACTOR SHALL COVER OR REMOVE EXISTING CONFLICTING SIGNING AND COVER OR REMOVE EXISTING CONFLICTING PAVEMENT MARKINGS PRIOR TO CONSTRUCTION.
2. THE CONTRACTOR SHALL MAINTAIN ACCESS TO ALL RESIDENTIAL AND COMMERCIAL PROPERTIES AT ALL TIMES.
3. FOR MAINTENANCE OF TRAFFIC LEGEND, SEE SHEET 27.

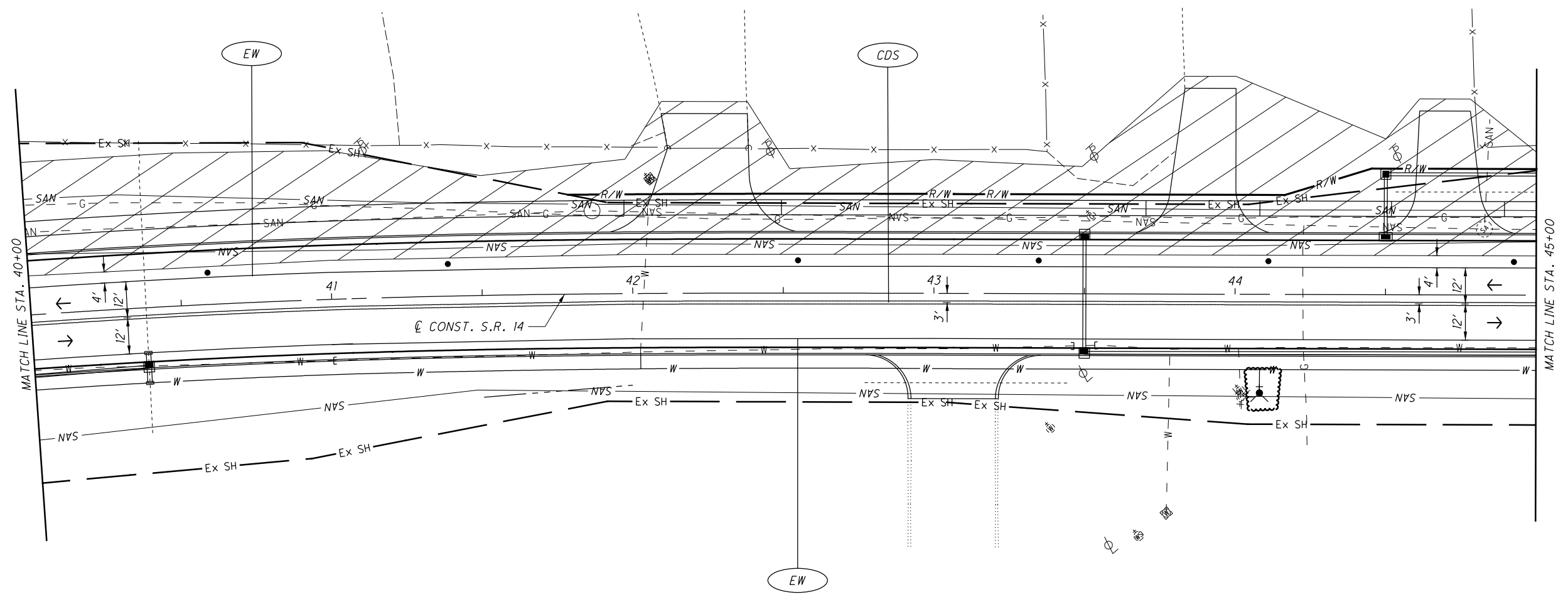
O:\2017\2017114\POR\02234\Design\M01\Sheets\02234mp054.dgn Design 2/19/2021 4:57:42 PM mthomas



CALCULATED
SLB
CHECKED
LOB

**MAINTENANCE OF TRAFFIC PLAN - PHASE 3
STA. 40+00 TO STA. 45+00**

POR-14-3.65



6

REVISIONS		
DATE	REV.	DESCRIPTION
2-19-21	ADDENDUM #6	FIRE HYDRANT

MAINTENANCE OF TRAFFIC NOTES:

1. THE CONTRACTOR SHALL COVER OR REMOVE EXISTING CONFLICTING SIGNING AND COVER OR REMOVE EXISTING CONFLICTING PAVEMENT MARKINGS PRIOR TO CONSTRUCTION.
2. THE CONTRACTOR SHALL MAINTAIN ACCESS TO ALL RESIDENTIAL AND COMMERCIAL PROPERTIES AT ALL TIMES.
3. FOR MAINTENANCE OF TRAFFIC LEGEND, SEE SHEET 27.

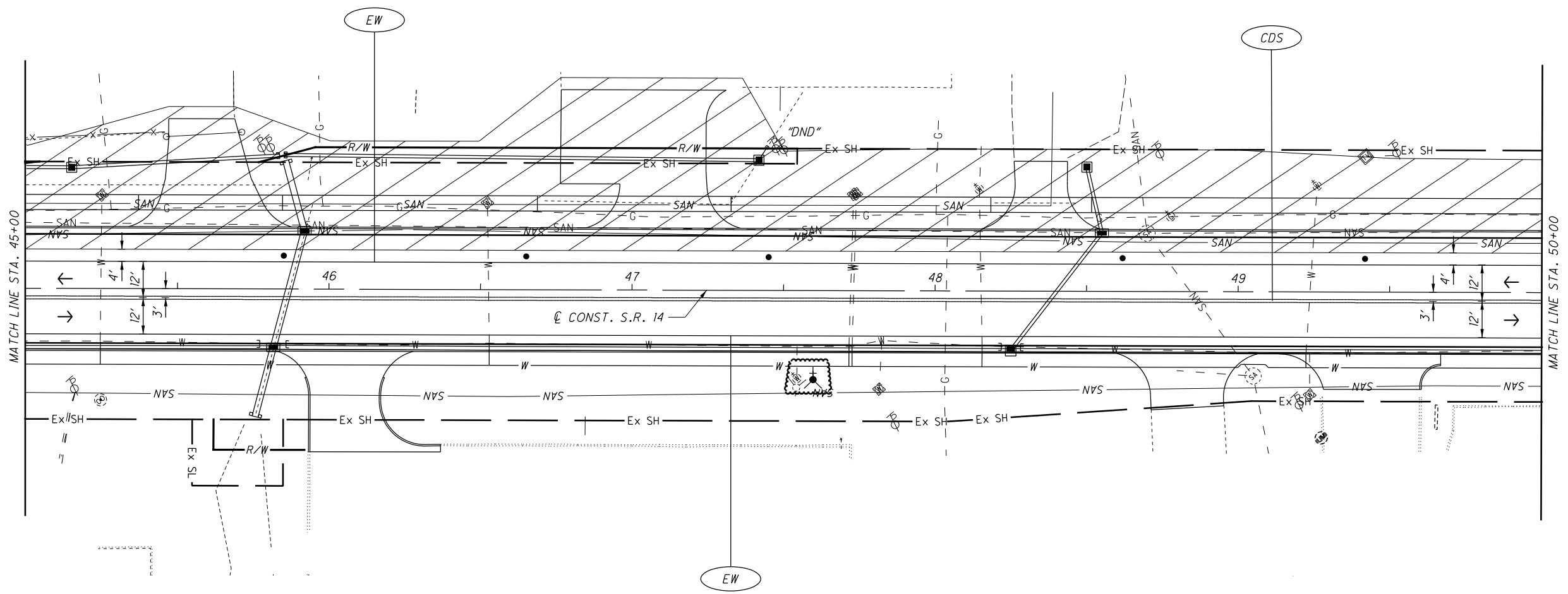
O:\2017\2017114\POR\02234\Design\M01\Sheets\02234mp055.dgn Design 2/19/2021 4:59:46 PM mthomas

CALCULATED
SLB
CHECKED
LOB

0 20 40
HORIZONTAL
SCALE IN FEET

MAINTENANCE OF TRAFFIC PLAN - PHASE 3
STA. 45+00 TO STA. 50+00

POR-14-3.65



6

REVISIONS		
DATE	REV.	DESCRIPTION
2-19-21	ADDENDUM #6	FIRE HYDRANT

- MAINTENANCE OF TRAFFIC NOTES:**
1. THE CONTRACTOR SHALL COVER OR REMOVE EXISTING CONFLICTING SIGNING AND COVER OR REMOVE EXISTING CONFLICTING PAVEMENT MARKINGS PRIOR TO CONSTRUCTION.
 2. THE CONTRACTOR SHALL MAINTAIN ACCESS TO ALL RESIDENTIAL AND COMMERCIAL PROPERTIES AT ALL TIMES.
 3. FOR MAINTENANCE OF TRAFFIC LEGEND, SEE SHEET 27.

O:\2017\2017114\POR\02234\Design\M01\Sheets\02234mp062.dgn Design 2/19/2021 5:02:19 PM mthomas

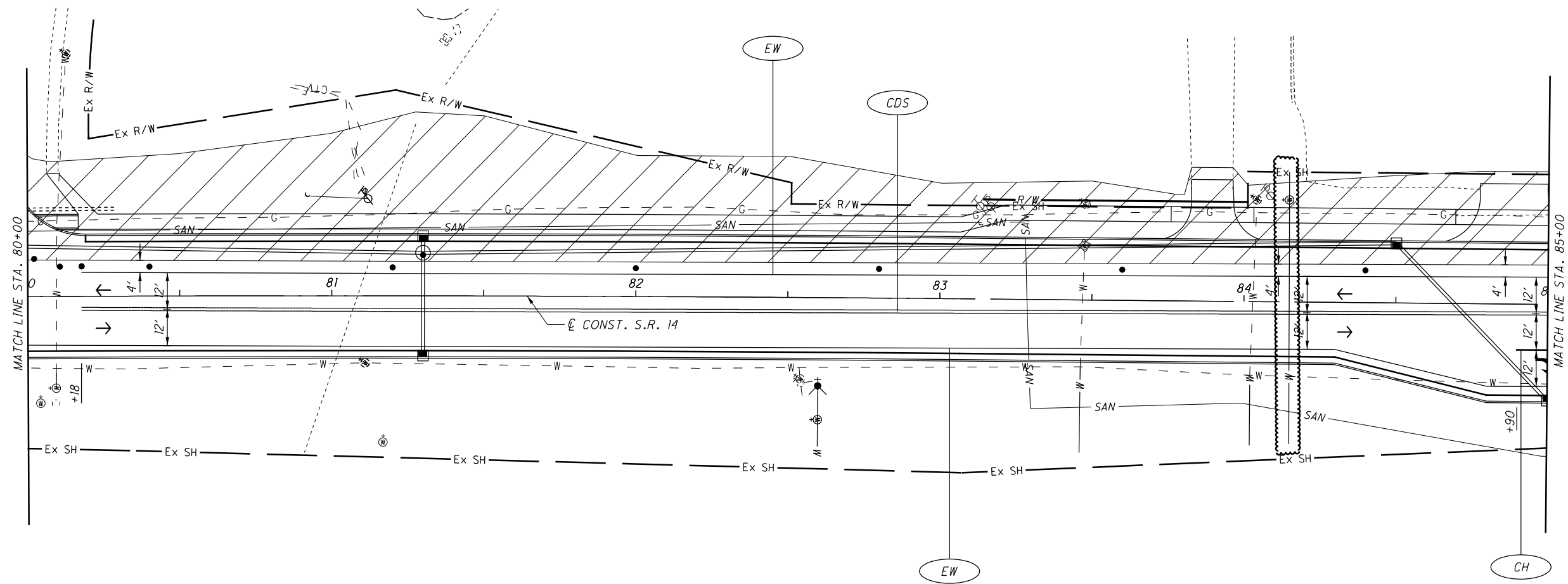


CALCULATED
SLB
CHECKED
LOB

MAINTENANCE OF TRAFFIC PLAN - PHASE 3
STA. 80+00 TO STA. 85+00

POR-14-3.65

61
281



6

REVISIONS		
DATE	REV.	DESCRIPTION
2-19-21	ADDENDUM #6	WATER SERVICE

MAINTENANCE OF TRAFFIC NOTES:

1. THE CONTRACTOR SHALL COVER OR REMOVE EXISTING CONFLICTING SIGNING AND COVER OR REMOVE EXISTING CONFLICTING PAVEMENT MARKINGS PRIOR TO CONSTRUCTION.
2. THE CONTRACTOR SHALL MAINTAIN ACCESS TO ALL RESIDENTIAL AND COMMERCIAL PROPERTIES AT ALL TIMES.
3. FOR MAINTENANCE OF TRAFFIC LEGEND, SEE SHEET 27.

REVISIONS	REV.	DESCRIPTION
DATE	ADDENDUM #	QUANTITY REVISION
2-19-21	6	



FILES
DATE\$
TIME\$

2017114\POR\102234\Design\Roadway\Sheets\102234gg001.dgn Design 2/19/2021 3:03:43 PM mthomas

SHEET NUM.										PART.		ITEM	ITEM EXT	GRAND TOTAL	UNIT	DESCRIPTION	SEE SHEET NO.
15	75	180	184	186	196	200	01/NHS/PV	02/NHS/OT									
			79	6			79	6	638	00701	79	6	FT	6" WATER MAIN DUCTILE IRON PIPE ANSI CLASS 52, MECHANICAL JOINTS AND FITTINGS, AS PER PLAN	186		
			14				14		638	01301	14		FT	8" WATER MAIN DUCTILE IRON PIPE ANSI CLASS 52, MECHANICAL JOINTS AND FITTINGS, AS PER PLAN	186		
			8				8		638	02501	8		FT	12" WATER MAIN DUCTILE IRON PIPE ANSI CLASS 52, MECHANICAL JOINTS AND FITTINGS, AS PER PLAN	186		
			1,866				1,850	16	638	02917	1,866		FT	14" WATER MAIN DUCTILE IRON PIPE ANSI CLASS 52, MECHANICAL JOINTS AND FITTINGS, AS PER PLAN	186		
			11				11		638	03101	11		FT	16" WATER MAIN DUCTILE IRON PIPE ANSI CLASS 52, MECHANICAL JOINTS AND FITTINGS, AS PER PLAN	186		
					500		500		638	04801	500		FT	3/4" COPPER SERVICE BRANCH, AS PER PLAN	186		
			89				89		638	04901	89		FT	1" COPPER SERVICE BRANCH, AS PER PLAN	186		
		6	10				10	6	638	07800	10	6	EACH	6" GATE VALVE AND VALVE BOX			
			15				15	6	638	10201	15	6	EACH	6" FIRE HYDRANT, AS PER PLAN	186		
			3				3		638	10400	3		EACH	FIRE HYDRANT ADJUSTED TO GRADE			
		6	19				19		638	10481	19	6	EACH	FIRE HYDRANT REMOVED, AS PER PLAN	186		
			31				31	6	638	10800	31	6	EACH	VALVE BOX ADJUSTED TO GRADE			
			1				1		638	10801	1		EACH	VALVE BOX ADJUSTED TO GRADE, AS PER PLAN	14		
			29				29		638	10900	29		EACH	SERVICE BOX ADJUSTED TO GRADE			
			5				5		638	98000	5		EACH	WATER WORK, MISC.: 14" CUTTING IN SLEEVE, VALVE WITH VALVE BOX	186		
			1				1	1	638	98000	1		EACH	WATER WORK, MISC.: 16" CUTTING IN SLEEVE, VALVE WITH VALVE BOX	186		
				15			15		638	98000	15		EACH	WATER WORK, MISC.: CURB BOX	186		
				LS			LS		638	98100	LS			WATER WORK, MISC.: CITY OF STREETSBORO WATER DEPARTMENT CHARGES	186		
			7,341				1,196	6,145	638	98600	7,341		FT	WATER WORK, MISC.: WATER MAIN ABANDONED	186		
														SANITARY SEWER			
250								250	611	00901	250		FT	6" CONDUIT, TYPE B, AS PER PLAN, 748.02	15		
250								250	611	01101	250		FT	6" CONDUIT, TYPE C, AS PER PLAN, 748.02	15		
			8				8		611	99654	8		EACH	MANHOLE ADJUSTED TO GRADE			
			1				1		611	99655	1		EACH	MANHOLE ADJUSTED TO GRADE, AS PER PLAN	14		
			1				1		611	99660	1		EACH	MANHOLE RECONSTRUCTED TO GRADE			
			8				8		611	99690	8		EACH	MANHOLE, MISC.: EXISTING FLUSHING STATION REMOVED AND RELOCATED	181		
			5				5		611	99690	5		EACH	MANHOLE, MISC.: MANHOLE ADJUSTED TO GRADE	180		
			1				1		611	99690	1		EACH	MANHOLE, MISC.: MANHOLE RECONSTRUCTED TO GRADE	180		
														TRAFFIC CONTROL			
	2						2		620	00500	2		EACH	DELINATOR, POST GROUND MOUNTED			
	11						11		626	00110	11		EACH	BARRIER REFLECTOR, TYPE 2 (1 WAY)			
						483.6	483.6		630	02100	483.6		FT	GROUND MOUNTED SUPPORT, NO. 2 POST			
						289.8	289.8		630	03100	289.8		FT	GROUND MOUNTED SUPPORT, NO. 3 POST			
						56	56		630	04101	56		FT	GROUND MOUNTED SUPPORT, NO. 4 POST, AS PER PLAN	192		
						12.6	12.6		630	08520	12.6		FT	STREET NAME SIGN SUPPORT, NO. 3 POST			
						45.6	45.6		630	08530	45.6		FT	STREET NAME SIGN SUPPORT, NO. 4 POST			
						4	4		630	08600	4		EACH	SIGN POST REFLECTOR			
						3	3		630	79101	3		EACH	SIGN HANGER ASSEMBLY, MAST ARM, AS PER PLAN	192		
						4	4		630	79500	4		EACH	SIGN SUPPORT ASSEMBLY, POLE MOUNTED			
						540.9	540.9		630	80100	540.9		SF	SIGN, FLAT SHEET			
						47	47		630	84900	47		EACH	REMOVAL OF GROUND MOUNTED SIGN AND DISPOSAL			
						2	2		630	85100	2		EACH	REMOVAL OF GROUND MOUNTED SIGN AND REERECTION			
						37	37		630	86002	37		EACH	REMOVAL OF GROUND MOUNTED POST SUPPORT AND DISPOSAL			
						3	3		630	87100	3		EACH	REMOVAL OF OVERHEAD MOUNTED SIGN AND REERECTION			
						3	3		630	87520	3		EACH	REMOVAL OF POLE MOUNTED SIGN AND REERECTION			
						2	2		631	93250	2		EACH	SCHOOL SPEED LIMIT SIGN ASSEMBLY, MISC.: REERECTION OF SCHOOL SPEED LIMIT SIGN ASSEMBLY, SOLAR-POWERED	192		
						2	2		631	94490	2		EACH	REMOVAL, MISC.: SCHOOL SPEED LIMIT SIGN ASSEMBLY, SOLAR-POWERED	192		
						1	1		631	94490	1		EACH	REMOVAL, MISC.: REMOVAL OF SIGN SERVICE	192		
						0.12	0.12		644	00100	0.12		MILE	EDGE LINE, 4"			
						3.03	3.03		644	00300	3.03		MILE	CENTER LINE			
						1,320	1,320		644	00400	1,320		FT	CHANNELIZING LINE, 8"			
						187	187		644	00500	187		FT	STOP LINE			
						442	442		644	00600	442		FT	CROSSWALK LINE			

GENERAL SUMMARY

POR-14-3.65

① CONSTR. S.R. 14 CURVE DATA
 P.I. Sta. 39+39.52 TS Sta. 35+70.77 CS Sta. 41+06.60
 $\Delta = 10^\circ 43' 00''$ (RT) SC Sta. 37+70.77 ST Sta. 43+06.60
 $D_c = 2^\circ 00' 00''$ $\Delta c = 6^\circ 43' 00''$ (RT)
 $R = 2,864.79'$ $L_c = 335.83'$
 $L_s = 200.00'$ $E_s = 13.16'$
 $B_s = 2^\circ 00' 00''$ $\theta_{max} = 0.032$
 $LT = 133.34'$ $C = 335.64'$
 $ST = 66.67'$ $C.I. = C.2 = 199.99'$
 $x = 199.98'$ $C.B.1 = S 58^\circ 19' 11'' E$
 $y = 2.33'$ $C.B.2 = S 53^\circ 37' 41'' E$
 $k = 100.00'$ $C.B.2 = N 48^\circ 56' 11'' W$
 $p = 0.58'$

*NOTE - PROPOSED WATER LINE SERVICE EXTENSIONS TO BE OF THE SAME SIZE AS THE EXISTING SERVICE BEING EXTENDED

CROSS REFERENCES	
SHEET NO.	DESCRIPTION
3	BENCHMARKS
73-79	SUBSUMMARY
175-178	DRIVEWAY DETAILS
191-191H	CURB RAMP DETAILS



MATCH LINE STA. 35+00 SEE SHEET 83

MATCH LINE STA. 40+00 SEE SHEET 85

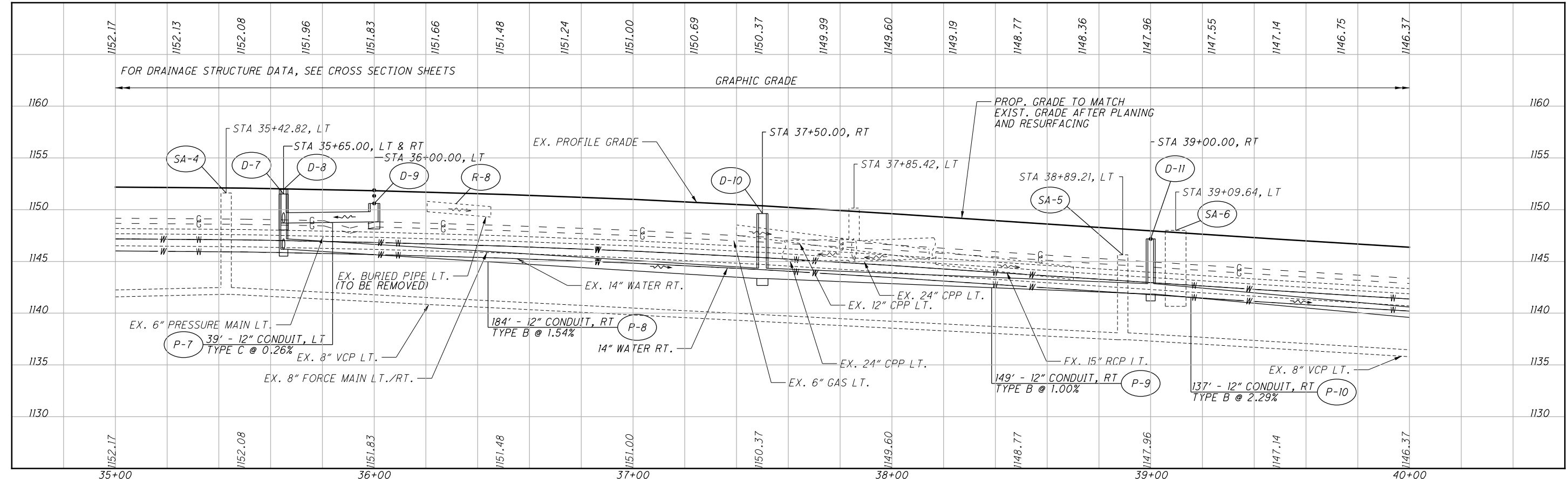
BENCHMARK #BM36
 BOLT ON FIRE HYDRANT FLANGE
 STA. 39+55.45, 30.02' RT.
 ELEV. = 1146.35

REVISIONS		
DATE	REV.	DESCRIPTION
2-19-21	ADDENDUM #6	FIRE HYDRANT

UNDERCUT AS INDICATED ON TYPICAL SECTIONS AND CROSS SECTIONS

PROP. FIRE HYDRANT STA. 39+51, 28.3' RT.

**14" PLUG STA. 35+62, 20.9' RT.



PLAN AND PROFILE
 STA. 35+00 TO STA. 40+00

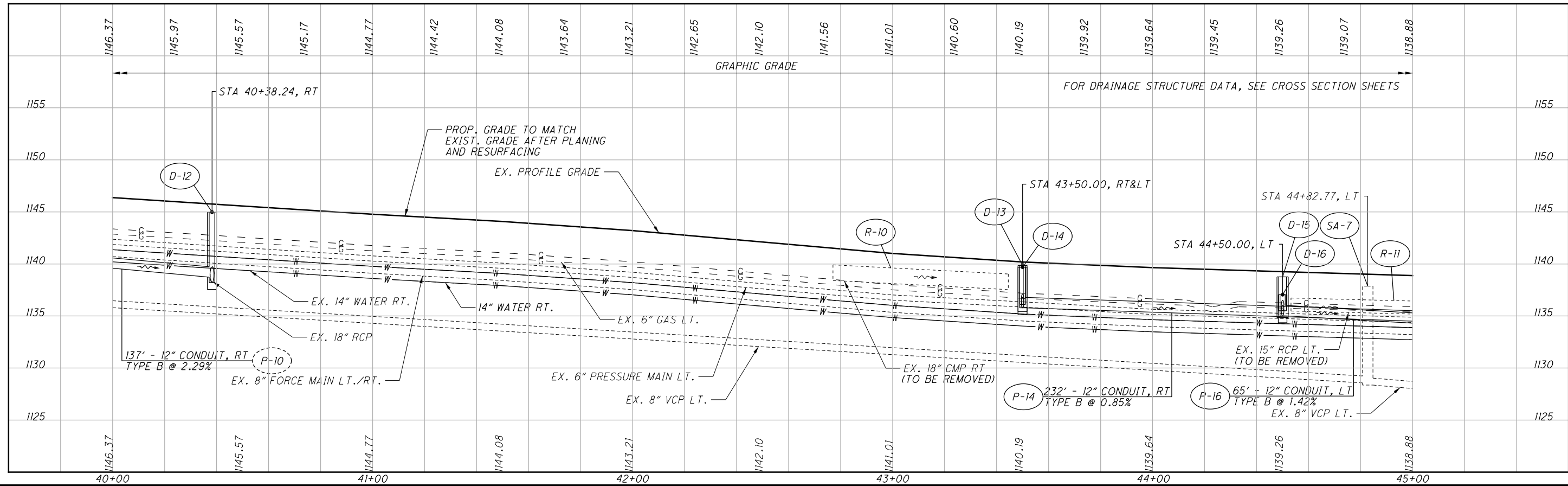
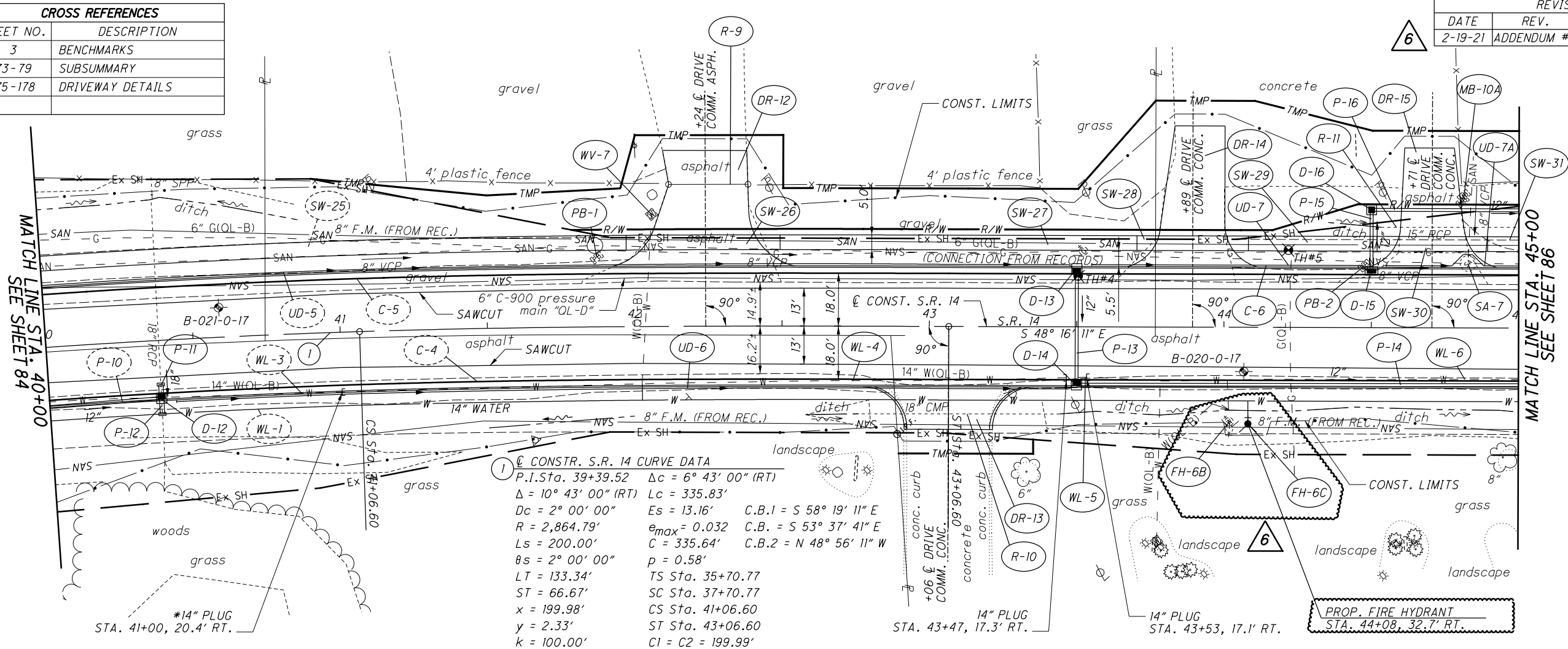
POR-14-3.65

#FILES: 5
 #DATES: 5
 #SHEET: 17
 #BASE: 17
 #2017114\POR\102234\Design\Roadway\Sheets\102234gp003.dgn Design 2/19/2021 12:57:07 PM mthomas

UNDERCUT AS INDICATED ON TYPICAL SECTIONS AND CROSS SECTIONS

CROSS REFERENCES	
SHEET NO.	DESCRIPTION
3	BENCHMARKS
73-79	SUBSUMMARY
175-178	DRIVEWAY DETAILS

REVISIONS		
DATE	REV.	DESCRIPTION
2-19-21	ADDENDUM #6	FIRE HYDRANT



PLAN AND PROFILE
 STA. 40+00 TO STA. 45+00

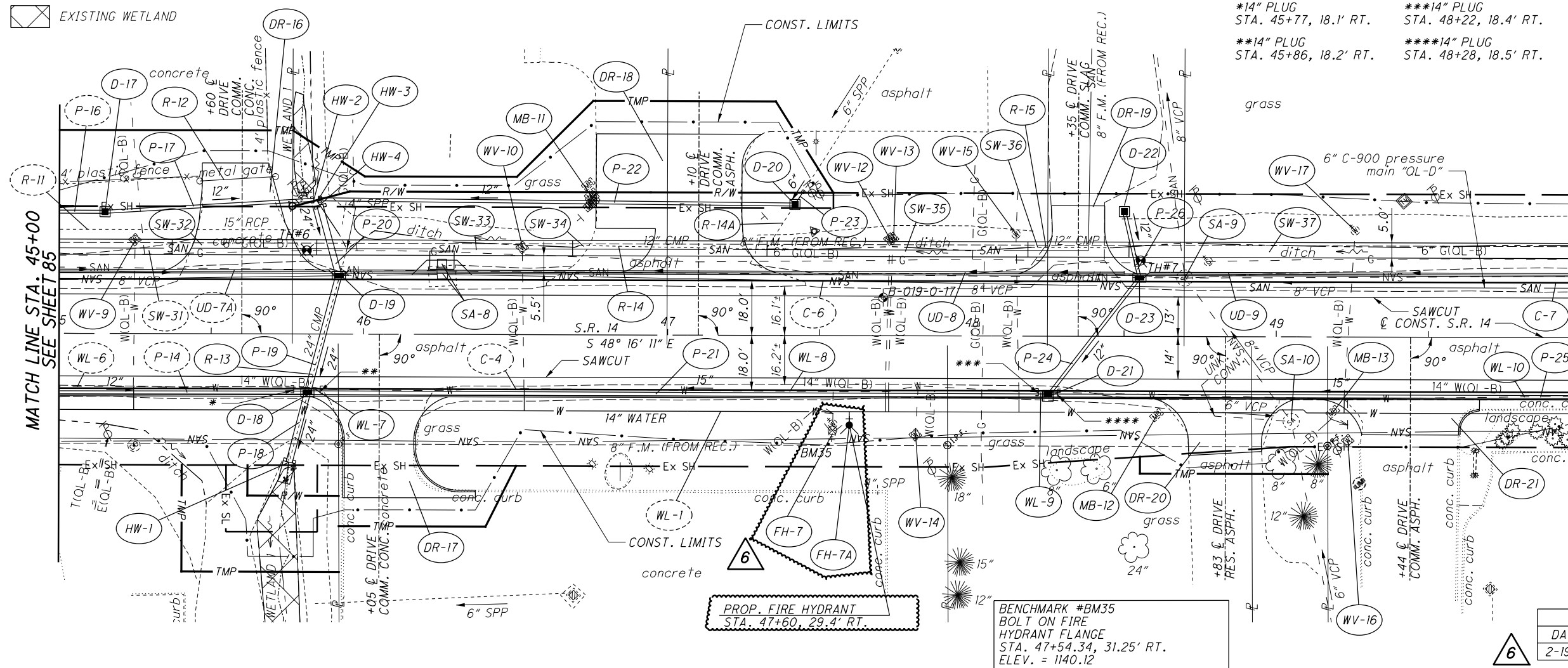
POR-14-3.65

85
 281

9FILES 5DAMES 5TIMES 6BASE017_2017114_POR\102234\Design\Roadway\Sheets\102234gp004.dgn Design 2/19/2021 12:59:59 PM mthomas

UNDERCUT AS INDICATED ON TYPICAL SECTIONS AND CROSS SECTIONS

EXISTING WETLAND



- *14" PLUG STA. 45+77, 18.1' RT.
- **14" PLUG STA. 45+86, 18.2' RT.
- ***14" PLUG STA. 48+22, 18.4' RT.
- ****14" PLUG STA. 48+28, 18.5' RT.

CROSS REFERENCES	
SHEET NO.	DESCRIPTION
3	BENCHMARKS
73-79	SUBSUMMARY
175-178	DRIVEWAY DETAILS



MATCH LINE STA. 45+00 SEE SHEET 85

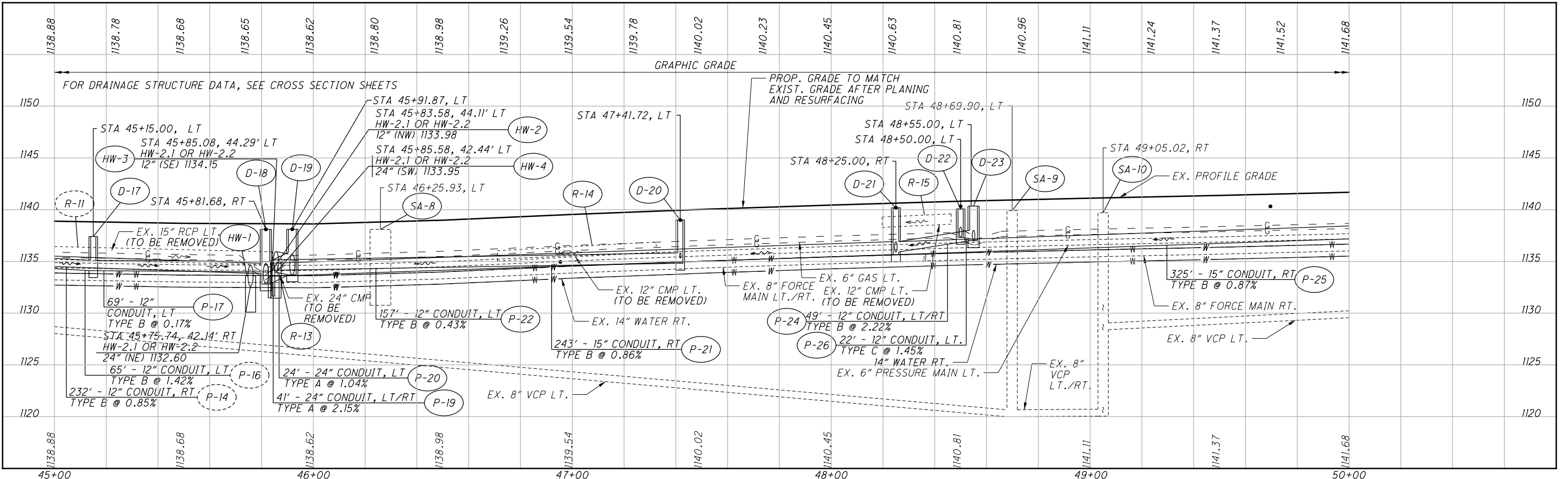
MATCH LINE STA. 50+00 SEE SHEET 87

REVISIONS		
DATE	REV.	DESCRIPTION
2-19-21	ADDENDUM #6	FIRE HYDRANT



PROP. FIRE HYDRANT
STA. 47+60.29, 4' RT.

BENCHMARK #BM35
BOLT ON FIRE
HYDRANT FLANGE
STA. 47+54.34, 31.25' RT.
ELEV. = 1140.12



PLAN AND PROFILE
STA. 45+00 TO STA. 50+00

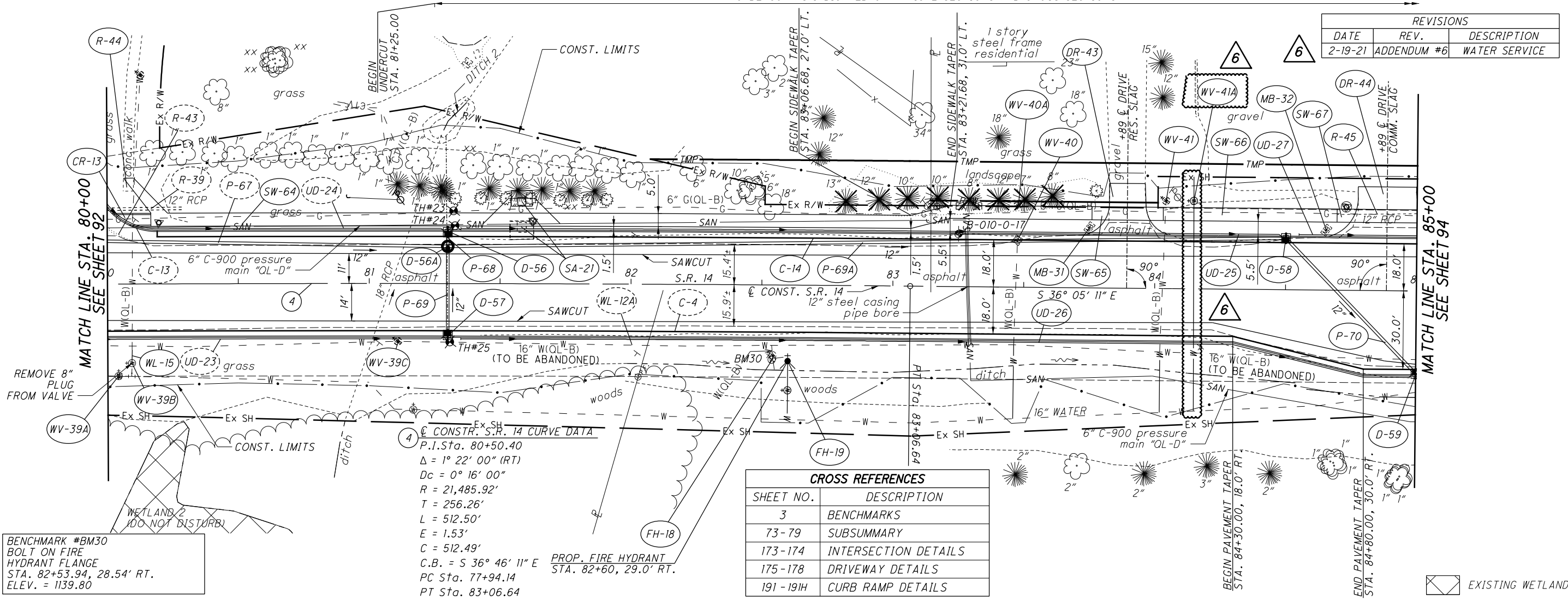
POR-14-3.65

86
281

#FILES: 5
 #DAYS: 5
 #TIMES: 5
 C:\Users\mthomas\OneDrive\Documents\17_2017114_POR\102234\Design\Roadway\Sheets\102234gp005.dgn Design 2/19/2021 1:02:28 PM mthomas

UNDERCUT AS INDICATED ON TYPICAL SECTIONS AND CROSS SECTIONS

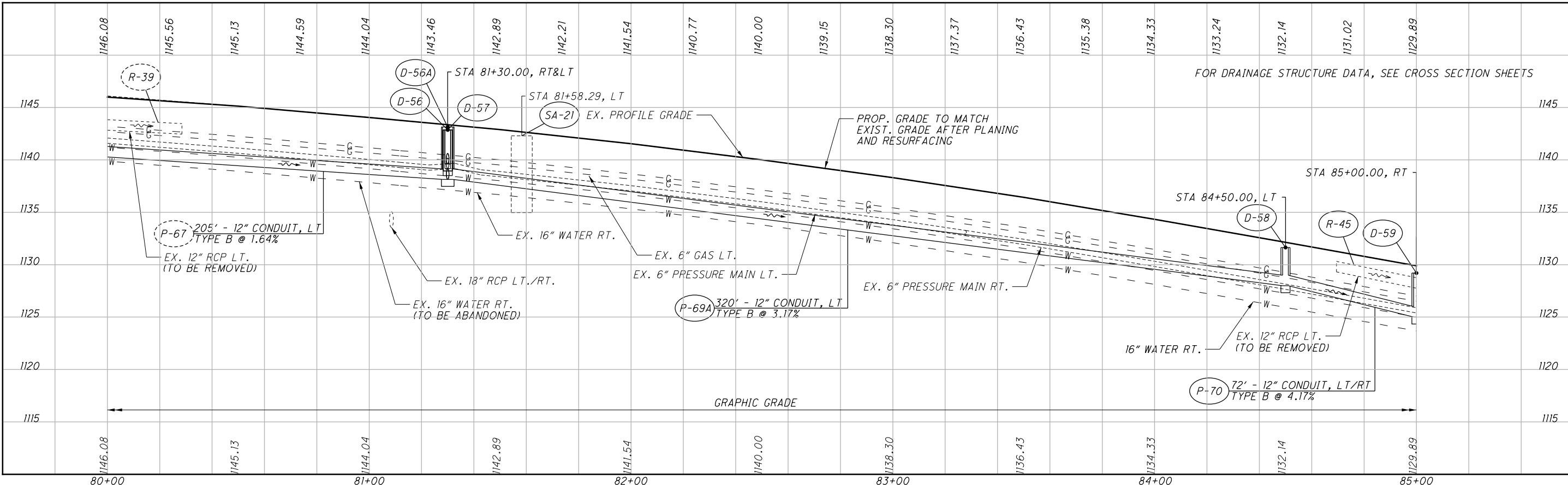
REVISIONS		
DATE	REV.	DESCRIPTION
2-19-21	ADDENDUM #6	WATER SERVICE



CONST. S.R. 14 CURVE DATA
 P.I. Sta. 80+50.40
 $\Delta = 1^\circ 22' 00''$ (RT)
 $D_c = 0^\circ 16' 00''$
 $R = 21,485.92'$
 $T = 256.26'$
 $L = 512.50'$
 $E = 1.53'$
 $C = 512.49'$
 $C.B. = S 36^\circ 46' 11'' E$ PROP. FIRE HYDRANT STA. 82+60, 29.0' RT.
 PC Sta. 77+94.14
 PT Sta. 83+06.64

CROSS REFERENCES	
SHEET NO.	DESCRIPTION
3	BENCHMARKS
73-79	SUBSUMMARY
173-174	INTERSECTION DETAILS
175-178	DRIVEWAY DETAILS
191-191H	CURB RAMP DETAILS

BENCHMARK #BM30
 BOLT ON FIRE HYDRANT FLANGE
 STA. 82+53.94, 28.54' RT.
 ELEV. = 1139.80



PLAN AND PROFILE
STA. 80+00 TO STA. 85+00

POR-14-3.65

#FILES: 5
 #DATES: 5
 #SHEET: 17
 #PROJECT: 2017114_POR\102234\Design\Roadway\Sheets\102234gp012.dgn Design 2/19/2021 1:53:43 PM mithomas

#FILES 0
 #DATES 0
 #TIMES 0
 017114\2017114\POR\102234\Design\Utilities\Sheets\102234.us001.dgn Design 2/19/2021 3:05:31 PM mthomas

REF. NO.	SHEET NO.	LOCATION	STATION		SIDE	202	638	638	638	638	638	638	638	638	638	638	638	638			
			ASBESTOS PIPE REMOVED	6" WATER MAIN DUCTILE IRON PIPE ANSI CLASS 52, MECHANICAL JOINTS AND FITTINGS, AS PER PLAN		8" WATER MAIN DUCTILE IRON PIPE ANSI CLASS 52, MECHANICAL JOINTS AND FITTINGS, AS PER PLAN	12" WATER MAIN DUCTILE IRON PIPE ANSI CLASS 52, MECHANICAL JOINTS AND FITTINGS, AS PER PLAN	14" WATER MAIN DUCTILE IRON PIPE ANSI CLASS 52, MECHANICAL JOINTS AND FITTINGS, AS PER PLAN	16" WATER MAIN DUCTILE IRON PIPE ANSI CLASS 52, MECHANICAL JOINTS AND FITTINGS, AS PER PLAN	6" FIRE HYDRANT, AS PER PLAN	6" GATE VALVE AND VALVE BOX	FIRE HYDRANT REMOVED, AS PER PLAN	FIRE HYDRANT ADJUSTED TO GRADE	VALVE BOX ADJUSTED TO GRADE	VALVE BOX ADJUSTED TO GRADE, AS PER PLAN	SERVICE BOX ADJUSTED TO GRADE	WATER WORK, MISC.: 14" CUTTING IN SLEEVE, VALVE WITH VALVE BOX	WATER WORK, MISC.: WATER MAIN ABANDONED			
			FROM	TO		FT	FT	FT	FT	FT	FT	EACH	EACH	EACH	EACH	EACH	EACH	EACH	EACH	FT	
FH-1	82	S.R. 14	27+23.38		LT.																
FH-2	83	S.R. 14	31+75.73		RT.																
FH-3	83	S.R. 14	34+80.82		RT.																
FH-4	84	S.R. 14	37+01.45		RT.																
FH-5	84	S.R. 14	37+05.94		RT.		3														
FH-6	84	S.R. 14	39+51.00		RT.		3														
FH-6A	84	S.R. 14	39+55.22		RT.																
FH-6B	85	S.R. 14	44+01.91		RT.																
FH-6C	85	S.R. 14	44+08.00		RT.																
FH-7	86	S.R. 14	47+54.28		RT.																
FH-7A	86	S.R. 14	47+60.00		RT.																
FH-8	88	S.R. 14	57+45.20		RT.																
FH-9	88	S.R. 14	57+50.15		RT.																
FH-10	89	S.R. 14	62+50.20		RT.																
FH-11	89	S.R. 14	62+55.00		RT.		4														
FH-12	90	S.R. 14	67+70.22		RT.																
FH-13	90	S.R. 14	67+76.79		RT.																
FH-14	91	S.R. 14	72+21.31		RT.		7														
FH-15	91	S.R. 14	72+26.30		RT.																
FH-16	92	S.R. 14	77+24.83		RT.																
FH-17	92	S.R. 14	77+30.83		RT.																
FH-18	93	S.R. 14	82+54.33		RT.																
FH-19	93	S.R. 14	82+60.01		RT.		22														
FH-20	94	S.R. 14	87+39.70		RT.		4														
FH-21	94	S.R. 14	87+46.68		RT.																
FH-22	96	S.R. 14	97+51.90		RT.																
FH-23	96	S.R. 14	97+58.00		RT.		5														
FH-23A	97	S.R. 14	101+50.00		RT.																
FH-24	99	S.R. 14	112+42.66		RT.																
FH-25	99	S.R. 14	112+49.96		RT.		4														
FH-26	100	S.R. 14	116+61.33		RT.																
FH-27	100	S.R. 14	116+79.24		RT.																
WL-1	83 - 87	S.R. 14	34+97.00	53+50.00	RT.					1850										2	63
WL-2	83 - 84	S.R. 14	34+98.00	35+62.00	RT.																
WL-3	84 - 85	S.R. 14	35+62.00	41+00.00	RT.	535															
WL-4	85	S.R. 14	41+00.00	43+47.00	RT.																246
WL-5	85	S.R. 14	43+47.00	43+53.00	RT.	6															224
WL-6	85 - 86	S.R. 14	43+53.00	45+77.00	RT.																236
WL-7	86	S.R. 14	45+77.00	45+86.00	RT.	9															
WL-8	86	S.R. 14	45+86.00	48+22.00	RT.																
WL-9	86	S.R. 14	48+22.00	48+28.00	RT.	6															427
WL-10	86 - 87	S.R. 14	48+28.00	52+55.00	RT.																
WL-11	87	S.R. 14	52+55.00	53+50.00	RT.	95															
WL-12	88	S.R. 14	55+02.48	55+22.67	RT.					16										1	6145
WL-12A	88 - 100	S.R. 14	55+28.20	116+73.14	RT.																
WL-13	89	S.R. 14	64+83.34	64+83.60	RT.			5													
WL-14	91	S.R. 14	70+34.50	70+34.50	RT.				8												
WL-15	93	S.R. 14	80+09.28	80+09.41	RT.			5													
WL-16	94	S.R. 14	85+08.30	85+13.02	RT.		11														
WL-17	95	S.R. 14	90+14.50	90+16.91	RT.		4														
WL-18	96	S.R. 14	95+24.89	95+24.97	RT.			4													
WL-19	100	S.R. 14	116+74.23	116+77.44	RT.																
WV-1	82	S.R. 14	27+56.00		RT.																
WV-2	83	S.R. 14	31+48.92		LT.																
WV-3	83	S.R. 14	31+76.06		RT.																
WV-4	83	S.R. 14	34+51.85		RT.																
WV-5	83	S.R. 14	34+97.00		RT.																
SUBTOTALS CARRIED TO SHEET NO. 184						651	79	14	8	1866	11	15	10	19	3	2	1	1	4	7341	

REVISIONS			
DATE	REV.	DESCRIPTION	QUANTITY
2-19-21	#6		



STREETSBORO DEPARTMENT OF WATER (SWD) NOTES FOR NEW WATER MAIN INSTALLATION

BEDDING: PIPE SHALL BE LAID ONLY AFTER THE TRENCH HAS BEEN EXCAVATED BELOW THE BOTTOM OF THE PIPE, AND BROUGHT BACK WITH NOT LESS THAN SIX (6) INCHES OF SAND THOROUGHLY COMPACTED TO GRADE, AND SHAPED TO PROVIDE A FIRM TROUGH FOR RECEIVING THE PIPE. BELL HOLES SHALL BE PROPERLY LOCATED AND SHAPED FOR EACH JOINT. INITIAL BACKFILL (SAND) SHALL THEN BE TAMPED, IN SIX (6) INCH LAYERS, UP TO THE SPRINGLINE OF THE PIPE. THE TRENCH SHALL THEN BE BACKFILLED, IN SIX (6) INCH LAYERS, TO A DEPTH OF ONE (1) FOOT ABOVE THE PIPE WITH SAND, (INITIAL BACKFILL MATERIAL), AS SPECIFIED. PAYMENT FOR ALL LABOR, MATERIAL, EQUIPMENT AND INCIDENTALS SHALL BE INCLUDED IN THE UNIT PRICE BID FOR ITEM SPECIAL - 14" WATER MAIN DIP CLASS 52 MECHANICAL JOINTS AND FITTINGS, AS PER PLAN.

BACKFILL: IN ALL TRENCH INSTALLATION CONDITIONS, BACKFILL TO A MINIMUM OF 12 INCHES OVER THE TOP OF THE PIPE WITH THE SAME SAND MATERIAL UTILIZED FOR THE PIPE BEDDING. IN AREAS NOT UNDER PAVEMENT AND OUTSIDE OF THE RIGHT-OF-WAY, BACKFILL THE TRENCH IN ACCORDANCE WITH ODOT ITEM 638.08. FOR AREAS UNDER PAVEMENT AND WITHIN THE RIGHT-OF-WAY, BACKFILL THE TRENCH IN ACCORDANCE WITH THE FOLLOWING GRANULAR BACKFILL REQUIREMENTS. GRANULAR BACKFILL MATERIAL SHALL BE ALL NATURAL MATERIAL SUCH AS CRUSHED STONE OR GRAVEL MEETING ODOT ITEM 703.01 GRADATION SIZE NO. 57 THROUGH 78 OR ODOT ITEM 703.17 (304) AS INDICATED IN THE PLANS. AGGREGATE MUST BE OBTAINED FROM AN APPROVED SOURCE. NO SLAG, RECYCLED CONCRETE OR RECYCLED MATERIALS WILL BE PERMITTED. IF THE PLANS DO NOT INDICATE A SPECIFIC MATERIAL, ANY OF THE ABOVE GRADATIONS MAY BE USED FOR GRANULAR BACKFILL. PAYMENT FOR ALL LABOR, MATERIAL, EQUIPMENT AND INCIDENTALS SHALL BE INCLUDED IN THE PERTINENT UNIT PRICE BID FOR ITEM SPECIAL - 14" WATER MAIN DIP CLASS 52 MECHANICAL JOINTS AND FITTINGS, AS PER PLAN.

DUCTILE IRON AND CAST IRON FITTINGS: ALL FITTINGS SHALL BE MANUFACTURED IN ACCORDANCE WITH AND IN ALL RESPECTS WITH THE REQUIREMENTS OF THE LATEST STANDARD OF THE "AMERICAN NATIONAL STANDARD" FOR THE FOLLOWING: ANSI/AWWA C110/A21.10, "DUCTILE-IRON AND GRAY-IRON FITTINGS;" ANSI/AWWA C111/A21.11, "RUBBER-GASKET JOINTS FOR DUCTILE-IRON PRESSURE PIPE AND FITTINGS;" ANSI/AWWA C151/A21.51, "DUCTILE-IRON PIPE, CENTRIFUGALLY CAST;" AND ANSI/AWWA C153/A21.53, "DUCTILE-IRON COMPACT FITTINGS," ALL AS ADOPTED BY THE AMERICAN WATER WORKS ASSOCIATION (AWWA), WHICH STANDARDS, EXCEPT AS HEREIN MODIFIED, ARE MADE A PART OF THESE SPECIFICATIONS. ALL DUCTILE IRON FITTINGS SHALL HAVE AT LEAST TWO (2) FULL LENGTHS OF RESTRAINED JOINT PIPE ON EITHER OR ALL SIDES OF THE FITTING.

ALL CAST AND DUCTILE IRON PIPE FITTINGS FOR POTABLE WATER LINES SHALL BE LINED WITH STANDARD THICKNESS CEMENT MORTAR LINING AND BITUMINOUS SEAL COATED INSIDE, AT THE POINT OF MANUFACTURE, IN ACCORDANCE WITH ANSI/AWWA SPECIFICATION C104/A 21.4, "AMERICAN NATIONAL STANDARD FOR CEMENT-MORTAR LINING FOR DUCTILE-IRON PIPE AND FITTINGS".

THE EXTERIOR OF ALL PIPE FITTINGS TO BE SUBMERGED IN WATER AND FOR UNDERGROUND INSTALLATION SHALL BE GIVEN A BITUMINOUS COATING AT THE POINT OF MANUFACTURE, IN ACCORDANCE WITH ANSI/AWWA SPECIFICATION C151/A21.51. THE EXTERIOR SURFACE OF ALL PIPE FITTINGS TO BE INSTALLED INSIDE OF STRUCTURES OR EXPOSED EXTERIOR PIPING SHALL BE CLEANED AND SHOP PRIMED, WITH ONE (1) COAT OF PRIMER, AS RECOMMENDED BY THE MANUFACTURER WHOSE PAINT IS TO BE USED FOR FIELD PAINTING.

ALL DUCTILE IRON PIPE FITTINGS INSTALLED UNDERGROUND SHALL BE WRAPPED ENTIRELY IN PREFABRICATED 8-MIL POLYETHYLENE SLEEVES SLIPPED OVER THE PIPE DURING INSTALLATION, OVERLAPPED WHERE NECESSARY, AND SECURED WITH POLYETHYLENE TAPE TO COMPLETELY PREVENT THE ENTRANCE OF FOREIGN MATTER. SUCH ENCASEMENT SHALL BE CARRIED OUT IN ACCORDANCE WITH ANSI/AWWA SPECIFICATION C105/A21.5, "AMERICAN NATIONAL STANDARD FOR POLYETHYLENE ENCASEMENT FOR DUCTILE IRON PIPING FOR WATER AND OTHER LIQUIDS".

ALL CAST OR DUCTILE IRON FITTINGS SHALL BE MARKED IN ACCORDANCE WITH ANSI/AWWA C110/A21.10 SECTION 10-9, "MARKINGS ON FITTINGS". MARKING SHALL ALSO INCLUDE THE MANUFACTURER'S INITIALS, YEAR CAST AND CLASS LETTER OR NUMBER. MARK NUMBER AND WEIGHT SHALL BE CONSPICUOUSLY PAINTED ON EACH PIECE.

BOLTS AND NUTS: ALL CONNECTION BOLTS AND NUTS, INCLUDING MEGALUGS, SHALL BE MADE OF STAINLESS STEEL MEETING THE REQUIREMENTS OF ASTM A276, TYPE 304, ASTM A193 HEAVY HEX AND ASTM A194 HEAVY HEX.

FIRE HYDRANTS: FIRE HYDRANTS SHALL BE MANUFACTURED AND TESTED IN ACCORDANCE WITH AWWA C502 AND SHALL BE THE DRY BARREL, 3-WAY TYPE AS MANUFACTURED BY; AMERICAN-DARLING B-84-B-5 OR MUELLER COMPANY SUPER CENTURION 250 (A-423). FIRE HYDRANTS SHALL BE LISTED BY UNDERWRITERS LABORATORIES, INC. AND BE FACTORY MUTUAL APPROVED.

GATE VALVES: GATE VALVES SHALL CONFORM TO AWWA C500, "METAL-SEATED GATE VALVES FOR WATER SUPPLY SERVICE", AND SHALL BE IRON BODY, DOUBLE DISC, PARALLEL SEATS, BRONZE MOUNTED WITH NON-RISING STEM UTILIZING RUBBER "O" RING PACKING SEALS. RESILIENT WEDGE GATE VALVES SHALL CONFORM TO AWWA C509, "RESILIENT-SEATED GATE VALVES FOR WATER SUPPLY", OR AWWA C515, "REDUCED-WALL, RESILIENT-SEATED GATE VALVES FOR WATER SUPPLY", AND SHALL HAVE DUCTILE IRON BODIES, EPOXY COATED INSIDE AND OUT PER AWWA C550 WITH NON-RISING STEMS UTILIZING "O" RING STEM SEALS. VALVES SHALL OPEN TO THE LEFT (COUNTER-CLOCKWISE). VALVES SHALL HAVE MECHANICAL JOINT ENDS UNLESS OTHERWISE SHOWN ON THE PLANS OR DIRECTED BY THE CITY ENGINEER. ALL VALVES SHOULD BE DESIGNED FOR A WORKING PRESSURE OF 250 POUNDS PER SQUARE INCH (PSI) AND TO BE TESTED WATER TIGHT AT A MINIMUM HYDROSTATIC PRESSURE OF 400 POUNDS PER SQUARE INCH BY THE MANUFACTURER.

ITEM 638 - 1" COPPER SERVICE BRANCH, AS PER PLAN
 IN ADDITION TO THE REQUIREMENTS OF ODOT CMS 638, THIS ITEM SHALL INCLUDE A SERVICE BOX THAT MEETS THE REQUIREMENTS OF THE CITY OF STREETSBORO WATER DEPARTMENT SPECIFICATIONS.

STREETSBORO DEPARTMENT OF WATER (SWD) NOTES FOR NEW WATER MAIN INSTALLATION

TAPPING SLEEVES AND VALVES: THE CONTRACTOR SHALL FURNISH AND INSTALL STAINLESS STEEL TAPPING SLEEVES IN ACCORDANCE WITH AWWA C223, "STANDARD FOR FABRICATED STEEL AND STAINLESS STEEL TAPPING SLEEVES" SUITABLE FOR CONNECTION TO THE EXISTING WATER MAINS AT LOCATIONS INDICATED ON THE CONTRACT DRAWINGS, OR AS REQUIRED BY THE CITY ENGINEER. ALL TAPPING SLEEVES SHALL BE HEAVY 18-8 TYPE 304 STAINLESS STEEL WITH HEAVY 18-8 TYPE 304 STAINLESS STEEL STUDS/BOLTS AND HEAVY HEX TYPE 304 STAINLESS STEEL NUTS WITH TYPE 304 STAINLESS STEEL WASHERS UNLESS DIRECTED OTHERWISE BY THE CITY ENGINEER. TAPPING SLEEVES SHALL BE PROVIDED WITH A 3/4" TEST OUTLET AND PLUG. ALL METAL SURFACES MUST BE FULLY PASSIVATED IN ACCORDANCE WITH ASTM A380.

VALVE BOXES: ALL DIRECT BURY VALVES SHALL BE PROVIDED WITH VALVE, CURB OR SERVICE BOXES. VALVE BOXES SHALL BE OF STANDARD, ADJUSTABLE, HEAVY PATTERN, CAST IRON EXTENSION TYPE, THREE PIECE, 5-1/4 INCH SHAFT, SCREW TYPE, AND OF SUCH LENGTH AS NECESSARY TO EXTEND FROM THE VALVE BONNET TO FINISHED GRADE. TOPS SHALL BE SET AT ESTABLISHED GRADE, AND THE VALVE BOX COVER MARKED "WATER".

CUTTING PIPE: WHENEVER IT BECOMES NECESSARY TO CUT A LENGTH OF PIPE FOR ANY PURPOSE, CARE SHALL BE TAKEN TO LEAVE A SMOOTH AND UNIFORM SURFACE AND THE CUT SHALL BE PERFORMED SO THAT THE CUT SURFACE IS AT RIGHT ANGLES TO THE PIPE AXIS.

PAYMENT FOR ALL REQUIREMENTS AND ITEMS LISTED UNDER THE STREETSBORO DEPARTMENT OF WATER (SWD) NOTES FOR NEW WATER MAIN INSTALLATION NOTE, INCLUDING ALL LABOR, MATERIAL, EQUIPMENT AND INCIDENTALS SHALL BE INCLUDED IN THE PERTINENT UNIT PRICE BID FOR ITEM SPECIAL - 6", OR 14" WATER MAIN DIP CLASS 52 MECHANICAL JOINTS AND FITTINGS, AS PER PLAN UNLESS ITEMIZED SEPARATELY.

ITEM SPECIAL - 6" FIRE HYDRANT, AS PER PLAN
 THIS ITEM SHALL INCLUDE ALL NECESSARY EXCAVATION, EMBANKMENT, DEWATERING, SHEETING, PREPARATION OF TRENCH BOTTOM, ROCK EXCAVATION, HYDRANT, TEE, 4" STORZ CONNECTION, JOINT MATERIAL, BLOCKING, ADJUSTMENT, BEDDING, BACKFILL, TESTING, DISPOSAL OF WASTE AND ALL OTHER EXPENSES WHETHER SPECIFICALLY MENTIONED OR NOT, FOR THE INSTALLATION OF A 6" HYDRANT ASSEMBLY IN ACCORDANCE WITH S.W.D. STANDARDS.

HYDRANT ASSEMBLIES SHALL BE EQUIPPED WITH NATIONAL STANDARD NOZZLE THREADING AND HPHA HARRINGTON PERMANENT HYDRANT 4" STORZ COUPLING AS MANUFACTURED BY HARRINGTON, INC. (OR APPROVED EQUAL).

PAYMENT WILL BE MADE AT THE UNIT PRICE BID FOR EACH HYDRANT ASSEMBLY INSTALLED COMPLETE, TESTED, DISINFECTED, AND READY FOR SERVICE INCLUDING PERMANENT ADAPTERS.

ITEM 638 - FIRE HYDRANT REMOVED, AS PER PLAN
 PRIOR TO THE REMOVAL OF ANY EXISTING FIRE HYDRANT, AS INDICATED ON THE PLANS, THE CONTRACTOR SHALL CONTACT THE UTILITY OWNER AS TO WHETHER TO DISPOSE OF OR SALVAGE THE EXISTING HYDRANT. THIS ITEM OF WORK SHALL ALSO INCLUDE THE REMOVAL OF THE EXISTING HYDRANT BRANCH BETWEEN THE MAIN AND THE HYDRANT. PAYMENT FOR THE REMOVAL OF THE HYDRANT AND BRANCH AND DISPOSAL AND/OR SALVAGE AND DELIVERY OF THE EXISTING HYDRANT TO THE OWNER SHALL BE INCLUDED IN THE UNIT PRICE BID FOR ITEM 638 - FIRE HYDRANT REMOVED, AS PER PLAN.

ITEM 638 - WATER WORK, MISC.: CITY OF STREETSBORO WATER DEPARTMENT CHARGES
 PERMITS, INSPECTIONS AND FEES REQUIRED BY THE CITY OF STREETSBORO WATER DEPARTMENT (SWD) SHALL BE THE RESPONSIBILITY OF THE CONTRACTOR TO OBTAIN AND MEET COMPLIANCE INCLUDING WATERMAIN LOWERING FEES AND INSPECTION FEES. THE COST OF THESE FEES SHALL BE INCLUDED WITH THIS BID ITEM. CURRENT FEES OF HYDROSTATIC TESTING ARE \$100.00 EACH AND ALL BACTERIA SAMPLES ARE \$33.00 EACH. ALL INVOICES FROM THE CITY OF STREETSBORO WATER DEPARTMENT SHALL BE SUBMITTED TO THE OHIO DEPARTMENT OF TRANSPORTATION DISTRICT 4 WITHOUT ANY MARK-UP. THIS WILL BE A DIRECT REIMBURSEMENT ONLY AND ANY BALANCE DUE OR BALANCE REMAINING SHALL BE ADJUSTED BY CHANGE ORDER.

ITEM 638 - WATER WORK, MISC.: CURB BOX
 THE CONTRACTOR SHALL PROVIDE AND INSTALL CURB BOXES AS DIRECTED BY THE ENGINEER. CURB BOX SHALL BE AS PER TYPE SPECIFIED ON THE WATER WORK DETAILS SHEET IN THE PLANS AND SHALL CONFORM TO ODOT CMS 638. THE FOLLOWING ESTIMATED QUANTITY HAS BEEN CARRIED TO THE GENERAL SUMMARY FOR THE ABOVE DESCRIBED WORK:

ITEM 638 - WATER WORK, MISC.: CURB BOX 15 EACH

PAYMENT FOR THE ABOVE STATED SHALL INCLUDE ALL LABOR, MATERIALS, AND EQUIPMENT NECESSARY TO PERFORM THE ABOVE STATED WORK.

NOTIFICATION
 THE CONTRACTOR SHALL CONTACT THE CITY OF STREETSBORO - WATER DEPARTMENT (330) 626-2856 AT LEAST SEVEN (7) DAYS PRIOR TO ANY WATER LINE WORK.

ITEM 638 - WATER WORK, MISC.: WATER MAIN ABANDONED
 IN ADDITION TO THE REQUIREMENTS OF ODOT CMS 638, THE CONTRACTOR SHALL FILL THE DESIGNATED WATER MAIN TO BE ABANDONED WITH AN APPROVED GROUT PER THE MANUFACTURER'S RECOMMENDATIONS. THE GROUT SHALL BE PUMPED INTO PLACE, OR PLACED BY OTHER MEANS APPROVED BY THE ENGINEER. THE LENGTH OF FILLED WATER MAIN TO BE PAID FOR SHALL BE THE ACTUAL NUMBER OF FEET (MEASURED ALONG THE CENTERLINE OF WATER MAIN) FILLED AS DESCRIBED ABOVE.

PAYMENT FOR THE ABOVE WORK SHALL INCLUDE ALL LABOR, MATERIALS, AND EQUIPMENT NECESSARY TO PERFORM THE WORK AND SHALL BE INCLUDED IN THE UNIT PRICE BID FOR ITEM 638 - WATER WORK, MISC.: WATER MAIN ABANDONED.

SERVICE CONNECTIONS

PRIOR TO EXTENDING THE EXISTING SERVICE CONNECTIONS, AS INDICATED ON THE PLANS, THE CONTRACTOR SHALL FIELD LOCATE ALL SERVICE CONNECTIONS AND VERIFY THE SIZE OF THE EXISTING SERVICE CONNECTION. THE EXTENDED SERVICE CONNECTION SHALL BE THE SAME SIZE AS THE EXISTING SERVICE CONNECTION. FOR ESTIMATING PURPOSES, A 3/4" SIZE IS SHOWN ON THE PLAN SHEETS. THE CONTRACTOR SHALL NOTIFY THE ENGINEER OF ANY SERVICE CONNECTION NOT SHOWN ON THE PLANS.

UNLESS ITEMIZED SEPARATELY IN THE PLANS, PAYMENT FOR ALL SERVICE CONNECTIONS SHALL INCLUDE EXCAVATION, FULL DEPTH PAVEMENT SAWING, PAVEMENT REMOVAL, INSTALLING PIPE UNDER ROADWAY, TAPPING SADDLES, CORPORATION STOPS, SERVICE STOPS WITH RODS, SERVICE BOXES, HYDROSTATIC TESTING, DISINFECTION, BACKFILLING, TRACKLESS TACK COATS, SUBGRADE COMPACTION, RESTORATION OF SURFACES INCLUDING PAVEMENT, ASPHALT CONCRETE BASE, AND AGGREGATE BASE TO AN EQUAL OR BETTER UNDISTURBED CONDITION, LAYOUT STAKES, REMOVAL OF EXISTING SERVICE CONNECTION AND DISPOSAL OF MATERIAL.

SERVICE CONNECTIONS SHALL BE INSTALLED AT THE FOLLOWING LOCATIONS:

STA.	OFFSET	SIDE	SERVICE BRANCH SIZE	ADDRESS
37+32.36	17.8'	RT.	MATCH EXISTING	9004 S.R. 14
42+02.50	19.5'	RT.	MATCH EXISTING	8976 S.R. 14
45+24.59	17.5'	RT.	MATCH EXISTING	8948 S.R. 14
46+52.94	17.8'	RT.	MATCH EXISTING	8932 S.R. 14
47+71.64	18.5'	RT.	MATCH EXISTING	8932 S.R. 14
47+72.68	18.5'	RT.	MATCH EXISTING	8932 S.R. 14
48+15.55	18.3'	RT.	MATCH EXISTING	8932 S.R. 14
49+22.41	20.5'	RT.	MATCH EXISTING	-
50+93.34	19.7'	RT.	MATCH EXISTING	8900 S.R. 14
53+37.23	23.6'	RT.	MATCH EXISTING	8900 S.R. 14
61+12.32	22.9'	RT.	MATCH EXISTING	8840 S.R. 14
62+88.99	25.8'	RT.	MATCH EXISTING	8822 S.R. 14
63+74.30	25.9'	RT.	MATCH EXISTING	8812 S.R. 14
65+73.82	23.3'	RT.	MATCH EXISTING	8794 S.R. 14
67+30.31	24.6'	RT.	MATCH EXISTING	8782 S.R. 14
67+85.08	24.7'	RT.	MATCH EXISTING	8770 S.R. 14
69+60.39+	21.0'±	RT.	MATCH EXISTING	1933 VALLEY BROOK
70+71.20±	22.7'±	RT.	MATCH EXISTING	-
71+27.19	23.0'	RT.	MATCH EXISTING	8754 S.R. 14
72+04.53	24.3'	RT.	MATCH EXISTING	8744 S.R. 14
72+91.80	23.8'	RT.	MATCH EXISTING	8732 S.R. 14
74+93.44	24.3'	RT.	MATCH EXISTING	8707 S.R. 14
75+34.62	26.1'	RT.	MATCH EXISTING	8708 S.R. 14
77+45.92	36.9'	RT.	MATCH EXISTING	8693 S.R. 14
77+62.51	36.4'	RT.	MATCH EXISTING	8693 S.R. 14
83+46.38	22.0'	RT.	MATCH EXISTING	8660 S.R. 14
84+02.19	24.2'	RT.	MATCH EXISTING	8660 S.R. 14
85+96.08	27.1'	RT.	MATCH EXISTING	8648 S.R. 14
114+01.51	32.5'	RT.	MATCH EXISTING	8406 S.R. 14

ANY ADDITIONAL SERVICE CONNECTIONS REQUIRED SHALL BE AT THE DIRECTION OF THE ENGINEER.

THE FOLLOWING ESTIMATED QUANTITY HAS BEEN CARRIED TO THE GENERAL SUMMARY FOR USE AS DIRECTED BY THE ENGINEER FOR SERVICE CONNECTIONS:

ITEM 638 - 3/4" COPPER SERVICE BRANCH, AS PER PLAN 500 FT

PAYMENT FOR THE ABOVE STATED SHALL BE INCLUDED IN THE UNIT PRICE BID FOR ITEM SPECIAL - 3/4" COPPER SERVICE BRANCH, AS PER PLAN.

- ITEM 638 - 6" WATER MAIN DIP CLASS 52 MECHANICAL JOINTS AND FITTINGS, AS PER PLAN**
- ITEM 638 - 8" WATER MAIN DIP CLASS 52 MECHANICAL JOINTS AND FITTINGS, AS PER PLAN**
- ITEM 638 - 12" WATER MAIN DIP CLASS 52 MECHANICAL JOINTS AND FITTINGS, AS PER PLAN**
- ITEM 638 - 14" WATER MAIN DIP CLASS 52 MECHANICAL JOINTS AND FITTINGS, AS PER PLAN**
- ITEM 638 - 16" WATER MAIN DIP CLASS 52 MECHANICAL JOINTS AND FITTINGS, AS PER PLAN**

IN ADDITION TO THE REQUIREMENTS OF ODOT CMS 638, THIS ITEM SHALL INCLUDE AS-BUILT DRAWINGS, WARRANTY FOR DURATION OF THE PROJECT, REMOVAL OF PLUGS AS INDICATED ON THE PLANS, AND COLLECTION OF DIGITAL PHOTOS, AS SPECIFIED ELSEWHERE IN THE PLANS.

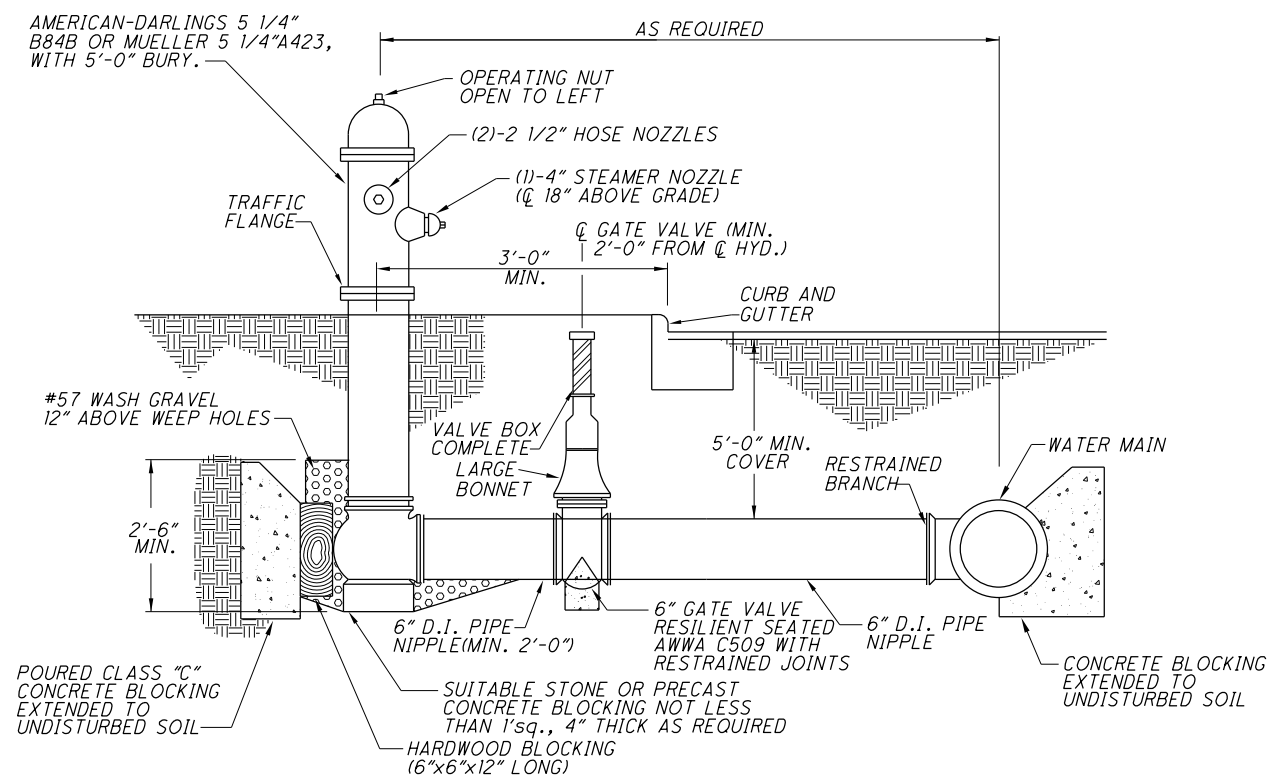
ALL DUCTILE IRON PIPE JOINTS SHALL BE AS SPECIFIED IN THE MATERIALS NOTE LOCATED WITHIN THE WATER WORK GENERAL NOTES.

PAYMENT FOR THE ABOVE STATED SHALL INCLUDE ALL LABOR, MATERIALS, AND EQUIPMENT NECESSARY TO PERFORM THE WORK AND SHALL BE INCLUDED IN THE UNIT PRICE BID FOR THE PERTINENT 6", 8", 12", 14", OR 16" WATER MAIN DIP CLASS 52 MECHANICAL JOINTS AND FITTINGS, AS PER PLAN.

ITEM 638 - WATER WORK, MISC.: 14" CUTTING IN SLEEVE, VALVE WITH VALVE BOX
ITEM 638 - WATER WORK, MISC.: 16" CUTTING IN SLEEVE, VALVE WITH VALVE BOX
 THIS ITEM SHALL INCLUDE ALL NECESSARY EXCAVATION; EMBANKMENT; DEWATERING; SHEETING; PREPARATION OF TRENCH BOTTOM; ROCK EXCAVATION; VALVE; VALVE BOX; TAPPING SLEEVE; JOINT MATERIAL; BLOCKING; ANODE CAPS; ADJUSTMENT; BEDDING, BACKFILL; TESTING; DISPOSAL OF WASTE AND ALL OTHER EXPENSES WHETHER SPECIFICALLY MENTIONED OR NOT, FOR THE INSTALLATION OF GATE VALVES AND VALVE BOXES IN ACCORDANCE WITH S.W.D. DETAILS. PAYMENT WILL BE MADE AT THE UNIT PRICE BID FOR EACH CUTTING IN ASSEMBLY INSTALLED COMPLETE, TESTED, DISINFECTED, AND READY FOR SERVICE. ALL VALVE BOLTS SHALL BE STAINLESS STEEL.

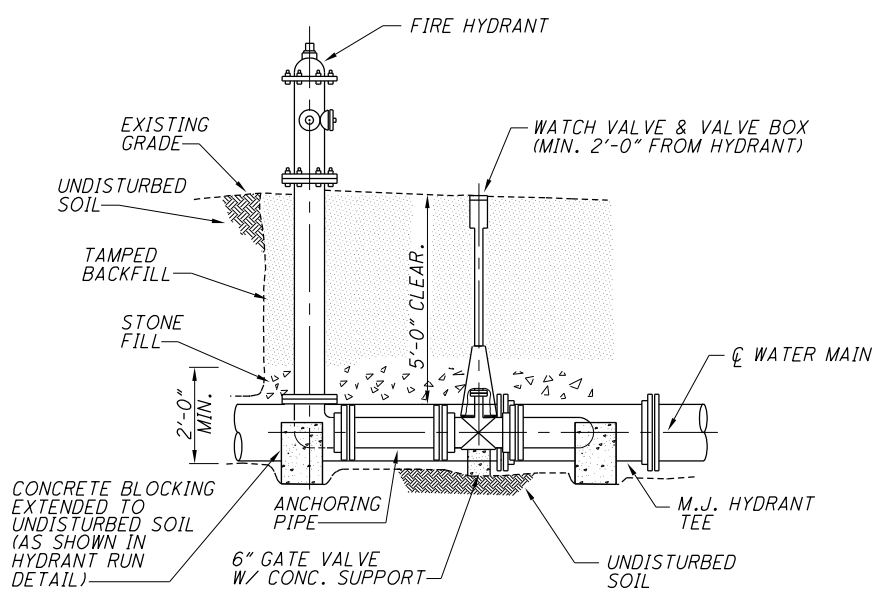
REV. #	DATE	DESCRIPTION
2-19-21	ADDENDUM #6	WATER SERVICE



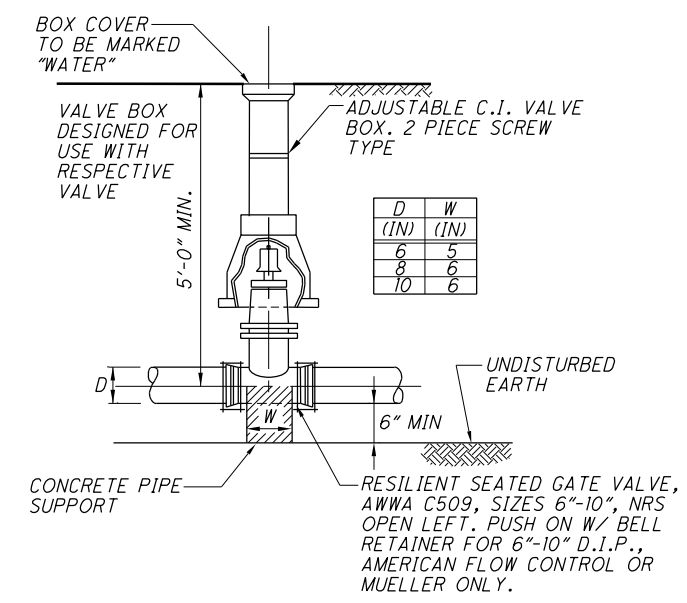


NOTE: RESTRAINED JOINTS MAY BE EITHER MECHANICAL JOINT WITH MEGALUG FOLLOWER GLAND OR ANCHOR PIPE

HYDRANT RUN & INSTALLATION
NOT TO SCALE



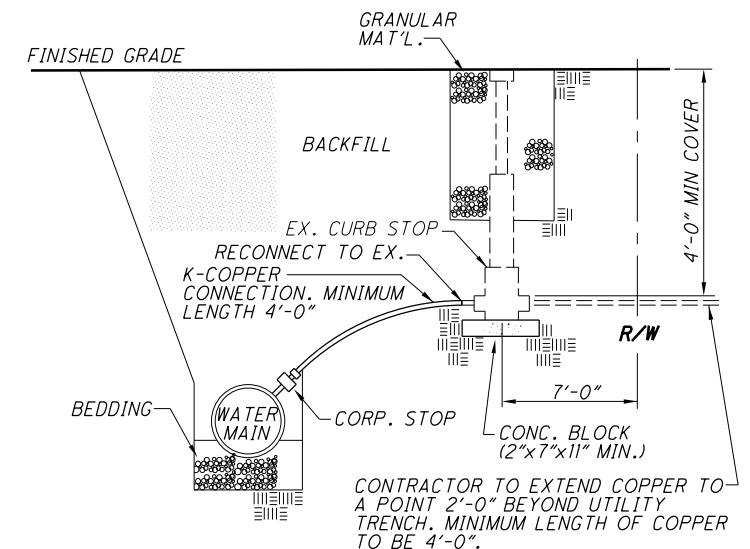
HYDRANT PARALLEL TO WATER MAIN
NOT TO SCALE



WATER VALVE DETAIL
NOT TO SCALE

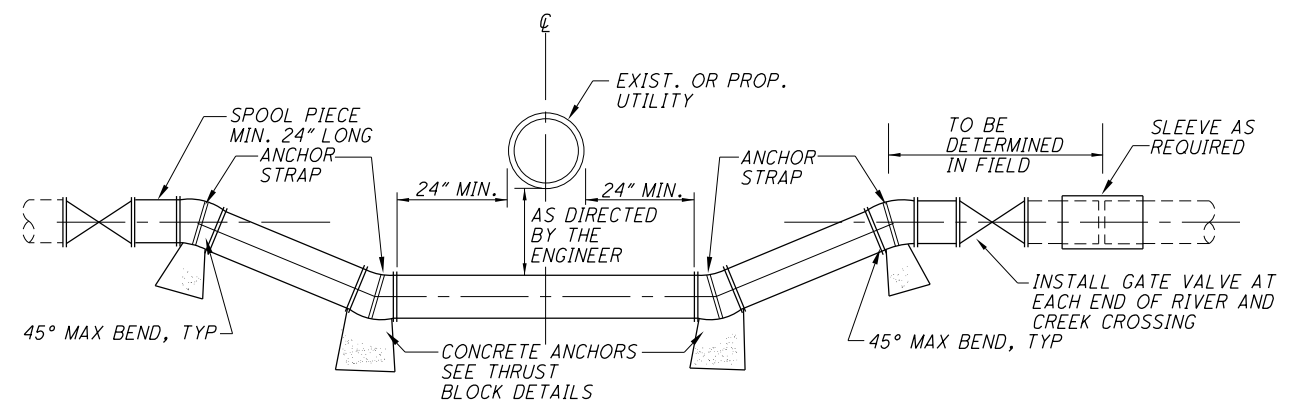
NOTES:

1. 2" AND SMALLER WATERLINES TO BE "K" COPPER.
2. 3" AND LARGER WATERLINES TO BE CLASS 52 DUCTILE IRON PIPE.
3. FULL BODIED OR COMPACT FITTINGS, MECHANICAL JOINT, FULL FACED GASKETS.
4. CURB STOPS: BALL VALVE FLARE x FLARE AS SPECIFIED.
5. CORPORATION STOPS: BALL VALVE CC x FLARE. AS SPECIFIED.
6. CURB BOXES: 94E, 2 1/2" BUFFALO STYLE BOX, SCREW TYPE.
7. VALVE BOXES: BUFFALO STYLE, SCREW TYPE, 5 1/4".
8. VALVES: 3" AND LARGER: MUELLER OR AMERICAN FLOW CONTROL. RESILIENT SEAT, OPEN LEFT.
9. WATER MAIN ROAD CROSSINGS/BORINGS: CARRIER PIPE REQUIRED PER AWWA C600-93, SECTION 6.2.
10. HYDRANTS: MUELLER #A423 OR AMERICAN DARLING #B-84-BIS 1/4". NST. 1 1/2" POINT TO FLAT OPERATING NUT, PAINTED **INDIGO BLUE AND YELLOW**, 18" FROM CENTER OF STEAMER NUT TO FINISH GRADE.
11. HYDRANT COVER: WASHED #57 GRAVEL, MINIMUM DEPTH ONE FOOT COVER. NO LIMESTONE.
12. PIPE BEDDING: #57 GRAVEL FOR DUCTILE LINES. MASON SAND FOR COPPER LINES. NO LIMESTONE.
13. PIPE COVER: MASON (CONCRETE SAND) CONFORMING TO ODOT CMS 703.02A. 6" MINIMUM COVER FOR COPPER LINES.
14. THRUST BLOCKING: CLASS "OC1" POURED CONCRETE, MINIMUM 4,000 PSI. HYDRANTS TO HAVE 6"x6"x12" TREATED LUMBER BETWEEN HYDRANT AND CONCRETE.
15. ALL PARTS AND ACCESSORIES TO BE DOMESTIC MADE.
16. RECYCLED CONCRETE NOT PERMITTED TO BE USED AS FILL OR COVER ON CITY UTILITIES OR WITHIN RIGHT-OF-WAY.



NOTE: DO NOT INSTALL CURB BOX IN PAVEMENT, SIDEWALKS, DRIVEWAYS OR APRONS UNLESS NO OTHER OPTION EXISTS. ANY CHANGE MUST BE APPROVED BY CITY OF STREETSBORO.

SERVICE CONNECTION
NOT TO SCALE



UTILITY CROSSING DETAIL
NOT TO SCALE

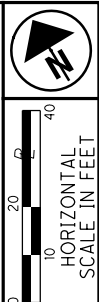
#FILES: 5
 #DATES: 5
 #TIMES: 5
 2/19/2021 1:06:18 PM mthomas



REVISIONS		
DATE	REV.	DESCRIPTION
2-19-21	ADDENDUM #6	HYDRANT COLOR

PORTAGE COUNTY
STREETSBO RO TOWNSHIP
RANGE 9 WEST, TOWNSHIP 4 NORTH
LOT 57
CONNECTICUT WESTERN RESERVE
CITY OF STREETSBO RO

© R/W S.R. 14
P.I. Sta. 40+44.33
 $\Delta = 10^\circ 43' 00''$ (RT)
 $Dc = 2^\circ 00' 00''$
 $R = 2,864.79'$
 $Ls = 200.00'$
 $\theta s = 2^\circ 00' 00''$
 $LT = 133.34'$
 $ST = 66.67'$
 $x = 199.98'$
 $y = 2.33'$
 $k = 100.00'$
 $p = 0.58'$
 $\Delta c = 6^\circ 43' 00''$ (RT)
 $Lc = 335.83'$
 $Ts = 368.75'$
 $E = 13.16'$
 $C = 335.64'$
 $C1 = C2 = 199.99'$
 $C.B.1 = S 58^\circ 19' 25'' E$
 $C.B. = S 53^\circ 37' 55'' E$
 $C.B.2 = N 48^\circ 56' 25'' W$



PID NO. 102234
R/W DESIGNER NLC
R/W REVIEWER WCL

RIGHT OF WAY TOPO SHEET
STA. 35+00 TO STA. 40+00

POR-14-3.65

19 / 52
248
281

BRUGMANN ACRES
P.B. 7, PG. 23

BRUGMANN ACRES
P.B. 7, PG. 23

8
KM PROPERTIES OF OHIO, LLC,
AN OHIO LIMITED LIABILITY COMPANY
35-056-10-00-039.000
S.R. 14
COMMERCIAL

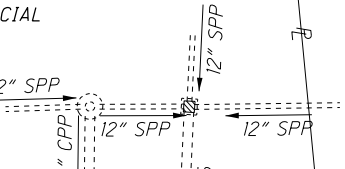
8
KM PROPERTIES OF OHIO, LLC,
AN OHIO LIMITED LIABILITY COMPANY
35-056-10-00-040.000
S.R. 14
COMMERCIAL

8
KM PROPERTIES OF OHIO, LLC,
AN OHIO LIMITED LIABILITY COMPANY
35-056-10-00-041.000
9016 S.R. 14
COMMERCIAL

8
KM PROPERTIES OF OHIO, LLC,
AN OHIO LIMITED LIABILITY COMPANY
35-056-10-00-041.000
9016 S.R. 14
COMMERCIAL

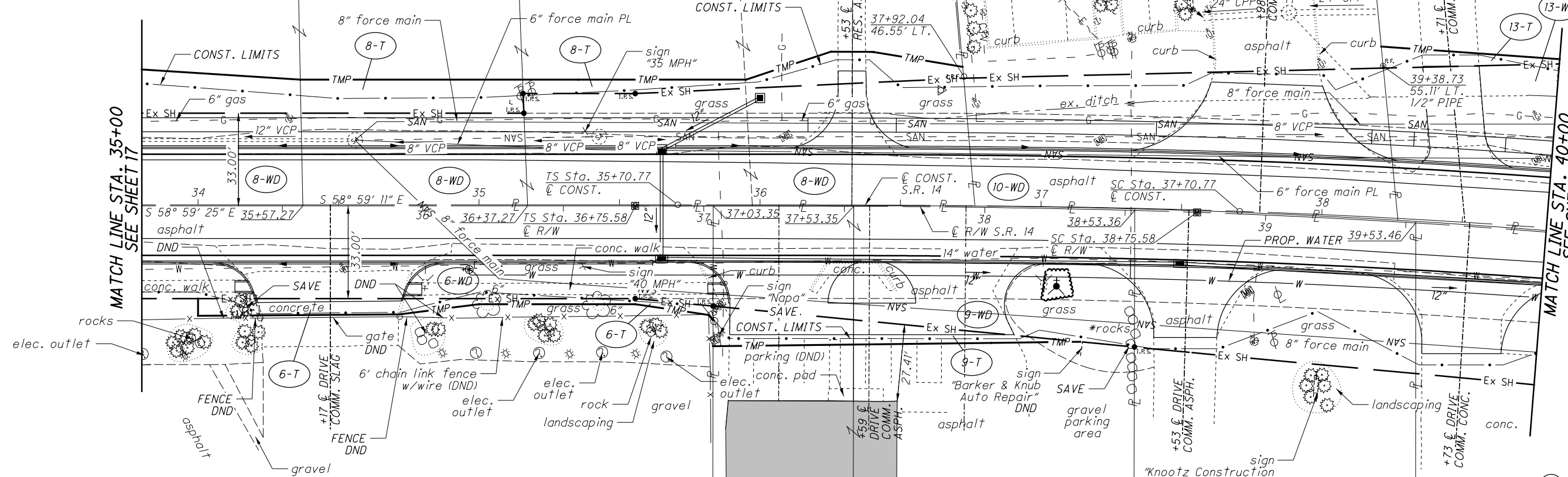
10
DG STRATEGIC II, LLC,
A TENNESSEE LIMITED LIABILITY COMPANY
35-057-00-00-039.005
9004 S.R. 14
COMMERCIAL

13
SEENO, ANDREWS & McCURDY
ET AL PARTNERS,
AN OHIO GENERAL PARTNERSHIP
35-057-00-00-039.001
8990 S.R. 14
COMMERCIAL



MATCH LINE STA. 35+00
SEE SHEET 17

MATCH LINE STA. 40+00
SEE SHEET 21



© CONST. S.R. 14
P.I. Sta. 39+39.52
 $\Delta = 10^\circ 43' 00''$ (RT)
 $Dc = 2^\circ 00' 00''$
 $R = 2,864.79'$
 $Ls = 200.00'$
 $\theta s = 2^\circ 00' 00''$
 $LT = 133.34'$
 $ST = 66.67'$
 $x = 199.98'$
 $y = 2.33'$
 $k = 100.00'$
 $p = 0.58'$
 $\Delta c = 6^\circ 43' 00''$ (RT)
 $Lc = 335.83'$
 $E = 13.16'$
 $C = 335.64'$
 $C1 = C2 = 199.99'$
 $C.B.1 = S 58^\circ 19' 11'' E$
 $C.B. = S 53^\circ 37' 41'' E$
 $C.B.2 = N 48^\circ 56' 11'' W$

REVISIONS		
DATE	REV.	DESCRIPTION
2-19-21	ADDENDUM #6	FIRE HYDRANT



6
KIMLORJEN, LLC,
AN OHIO LIMITED LIABILITY COMPANY
35-057-00-00-051.000
S.R. 14
COMMERCIAL

9
ALL COUNTY INVESTMENTS, L TD.
35-057-00-00-050.000
S.R. 14
COMMERCIAL

9
ALL COUNTY INVESTMENTS, L TD.
35-057-00-00-049.000
9011 S.R. 14
COMMERCIAL

11
KOONTZ PROPERTIES, LLC
35-057-00-00-048.000
9001 S.R. 14
COMMERCIAL

12
COLLINS LAND ACQUISITION, LLC,
AN OHIO LIMITED LIABILITY COMPANY
35-057-00-00-047.008
8987 S.R. 14
COMMERCIAL

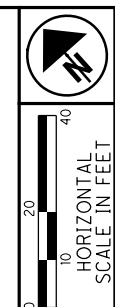
NOTE: ALL RIGHT OF WAY STATION VALUES ARE BASED ON THE CENTERLINE OF RIGHT OF WAY

* DENOTES ENCROACHMENT

REV. BY	DATE	DESCRIPTION
NLC	10/21/20	REVISED PARCEL 6-T
NLC	1/13/20	PARCEL NUMBER FORMAT
NLC	2/5/19	REMOVED 10-T
DATE COMPLETED: 12/3/2018		

#FILES
#DATES
#TIMES
#USERS

PORTAGE COUNTY
STREETSBORO TOWNSHIP
RANGE 9 WEST, TOWNSHIP 4 NORTH
LOT 57
CONNECTICUT WESTERN RESERVE
CITY OF STREETSBORO



PID NO. **102234**
R/W DESIGNER: NLC
R/W REVIEWER: WCL

RIGHT OF WAY TOPO SHEET
STA. 40+00 TO STA. 45+00

POR-14-3.65

21 / 52

250
281

© R/W S.R. 14
P.I. Sta. 40+44.33
 $\Delta = 10^\circ 43' 00''$ (RT)
 $Dc = 2^\circ 00' 00''$
 $R = 2,864.79'$
 $Ls = 200.00'$
 $\theta s = 2^\circ 00' 00''$
 $LT = 133.34'$
 $ST = 66.67'$
 $x = 199.98'$
 $y = 2.33'$
 $k = 100.00'$
 $p = 0.58'$
 $\Delta c = 6^\circ 43' 00''$ (RT)
 $Lc = 335.83'$
 $Ts = 368.75'$
 $E = 13.16'$
 $C = 335.64'$
 $C1 = C2 = 199.99'$
 $C.B.1 = S 58^\circ 19' 25'' E$
 $C.B. = S 53^\circ 37' 55'' E$
 $C.B.2 = N 48^\circ 56' 25'' W$ grass

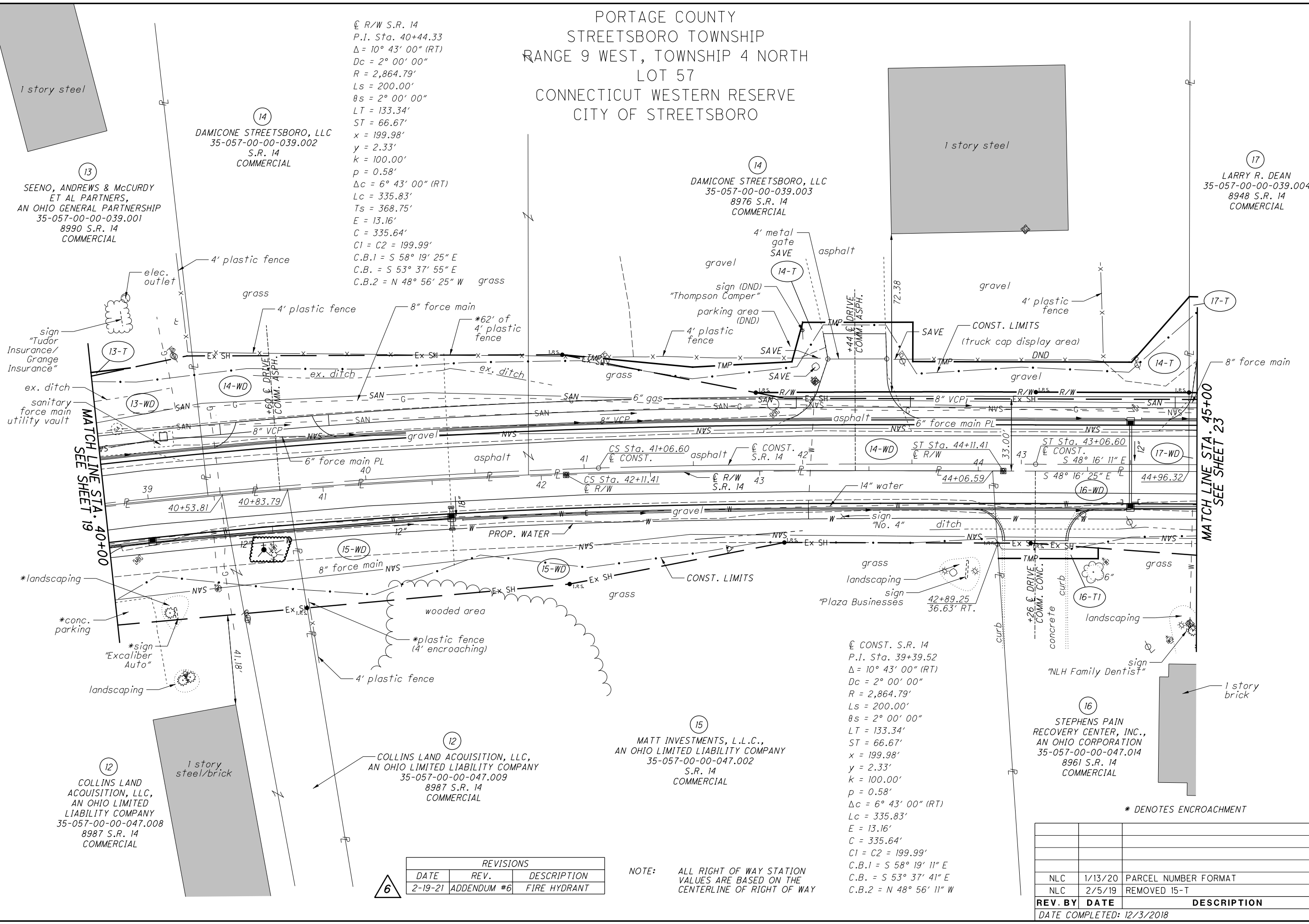
© CONST. S.R. 14
P.I. Sta. 39+39.52
 $\Delta = 10^\circ 43' 00''$ (RT)
 $Dc = 2^\circ 00' 00''$
 $R = 2,864.79'$
 $Ls = 200.00'$
 $\theta s = 2^\circ 00' 00''$
 $LT = 133.34'$
 $ST = 66.67'$
 $x = 199.98'$
 $y = 2.33'$
 $k = 100.00'$
 $p = 0.58'$
 $\Delta c = 6^\circ 43' 00''$ (RT)
 $Lc = 335.83'$
 $E = 13.16'$
 $C = 335.64'$
 $C1 = C2 = 199.99'$
 $C.B.1 = S 58^\circ 19' 11'' E$
 $C.B. = S 53^\circ 37' 41'' E$
 $C.B.2 = N 48^\circ 56' 11'' W$

REVISIONS		
DATE	REV.	DESCRIPTION
2-19-21	ADDENDUM #6	FIRE HYDRANT

NOTE: ALL RIGHT OF WAY STATION VALUES ARE BASED ON THE CENTERLINE OF RIGHT OF WAY

* DENOTES ENCROACHMENT

REV. BY	DATE	DESCRIPTION
NLC	1/13/20	PARCEL NUMBER FORMAT
NLC	2/5/19	REMOVED 15-T
DATE COMPLETED: 12/3/2018		



13 SEENO, ANDREWS & McCURDY ET AL PARTNERS, AN OHIO GENERAL PARTNERSHIP 35-057-00-00-039.001 8990 S.R. 14 COMMERCIAL

14 DAMICONE STREETSBORO, LLC 35-057-00-00-039.002 S.R. 14 COMMERCIAL

14 DAMICONE STREETSBORO, LLC 35-057-00-00-039.003 8976 S.R. 14 COMMERCIAL

17 LARRY R. DEAN 35-057-00-00-039.004 8948 S.R. 14 COMMERCIAL

12 COLLINS LAND ACQUISITION, LLC, AN OHIO LIMITED LIABILITY COMPANY 35-057-00-00-047.008 8987 S.R. 14 COMMERCIAL

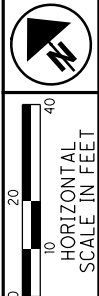
12 COLLINS LAND ACQUISITION, LLC, AN OHIO LIMITED LIABILITY COMPANY 35-057-00-00-047.009 8987 S.R. 14 COMMERCIAL

15 MATT INVESTMENTS, L.L.C., AN OHIO LIMITED LIABILITY COMPANY 35-057-00-00-047.002 S.R. 14 COMMERCIAL

16 STEPHENS PAIN RECOVERY CENTER, INC., AN OHIO CORPORATION 35-057-00-00-047.014 8961 S.R. 14 COMMERCIAL

#FILES#
#DATES#
#TIMES#
#USERS#

PORTAGE COUNTY, STREETSBORO TOWNSHIP
 RANGE 9 WEST, TOWNSHIP 4 NORTH, LOT 57
 CONNECTICUT WESTERN RESERVE
 CITY OF STREETSBORO



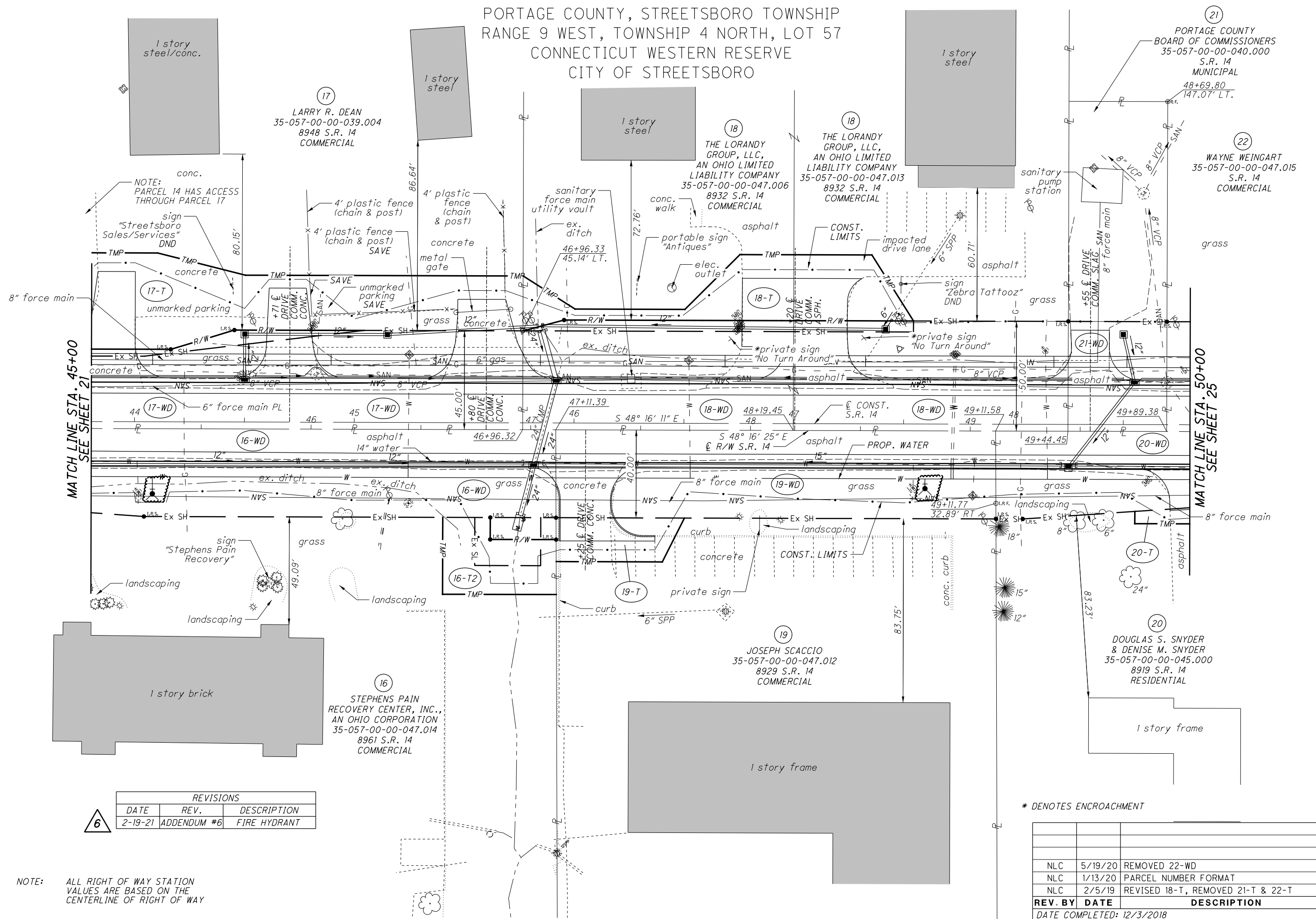
PID NO. **102234**
 R/W DESIGNER: NLC
 R/W REVIEWER: WCL

RIGHT OF WAY TOPO SHEET
STA. 45+00 TO STA. 50+00

POR-14-3.65

23 / 52

252
 281



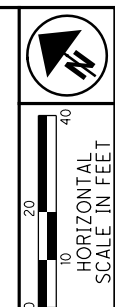
REVISIONS		
DATE	REV.	DESCRIPTION
2-19-21	ADDENDUM #6	FIRE HYDRANT

NOTE: ALL RIGHT OF WAY STATION VALUES ARE BASED ON THE CENTERLINE OF RIGHT OF WAY

REV. BY	DATE	DESCRIPTION
NLC	5/19/20	REMOVED 22-WD
NLC	1/13/20	PARCEL NUMBER FORMAT
NLC	2/5/19	REVISED 18-T, REMOVED 21-T & 22-T
DATE COMPLETED: 12/3/2018		

#FILES#
 #DATES#
 #TIMES#
 #USERS#

PORTAGE COUNTY
STREETSBORO TOWNSHIP
RANGE 9 WEST, TOWNSHIP 4 NORTH
LOT 68
CONNECTICUT WESTERN RESERVE
CITY OF STREETSBORO



PID NO. 102234
R/W DESIGNER NLC
R/W REVIEWER WCL

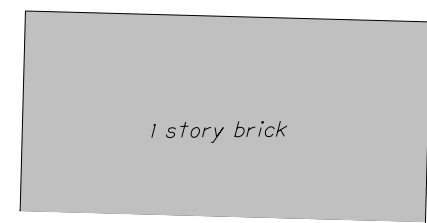
RIGHT OF WAY TOPO SHEET
STA. 85+00 TO STA. 90+00

POR-14-3.65

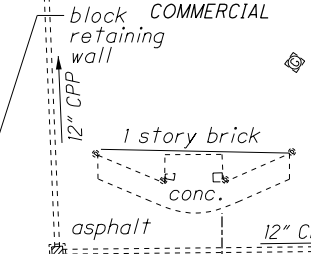
39 / 52

268
281

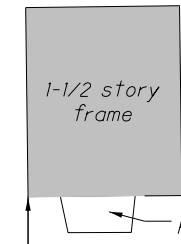
52
JAMES M. SHUKYS
35-067-00-00-002.000
8660 S.R. 14
COMMERCIAL



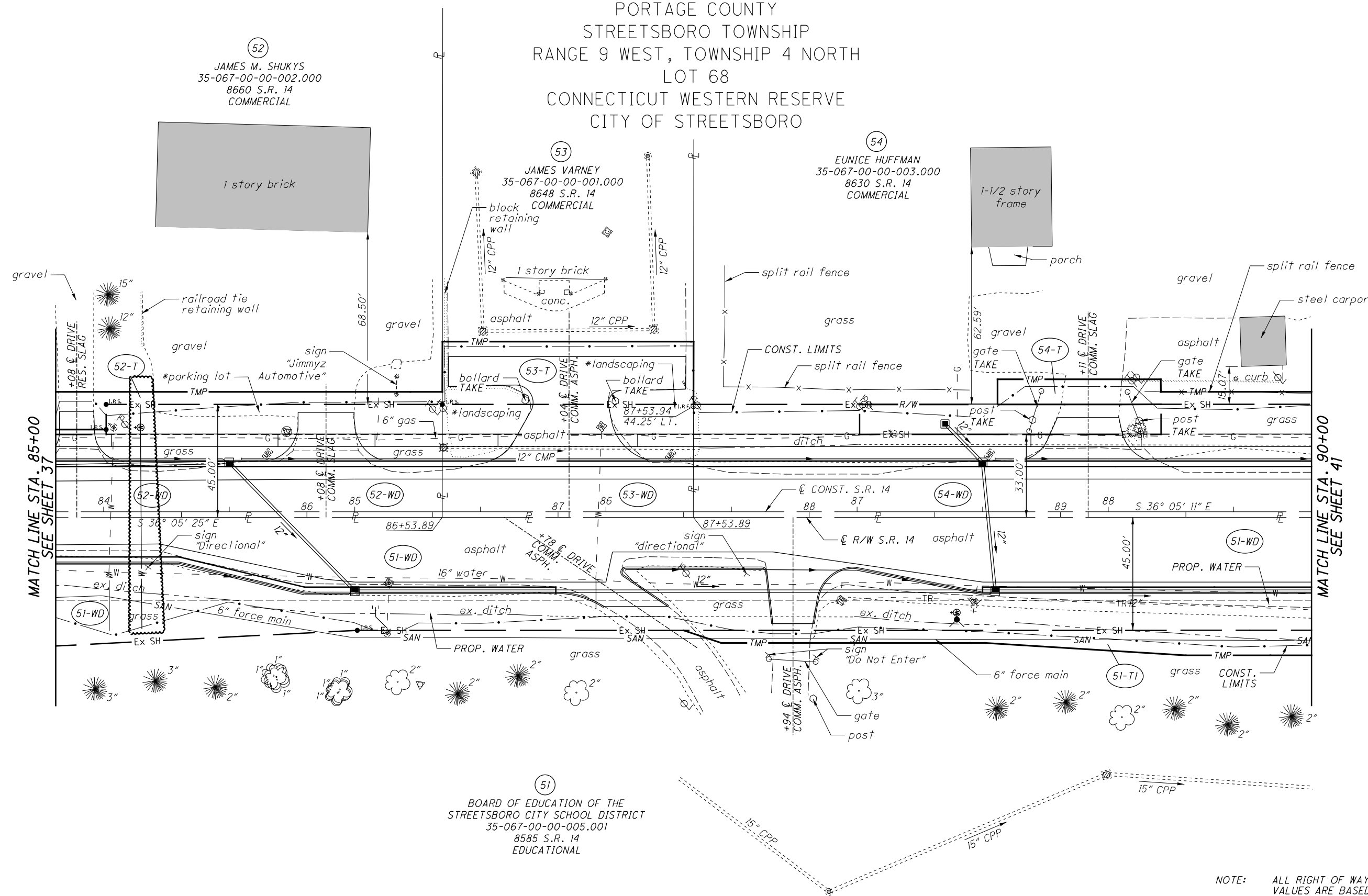
53
JAMES VARNEY
35-067-00-00-001.000
8648 S.R. 14
COMMERCIAL



54
EUNICE HUFFMAN
35-067-00-00-003.000
8630 S.R. 14
COMMERCIAL



51
BOARD OF EDUCATION OF THE
STREETSBORO CITY SCHOOL DISTRICT
35-067-00-00-005.001
8585 S.R. 14
EDUCATIONAL



MATCH LINE STA. 85+00
SEE SHEET 37

MATCH LINE STA. 90+00
SEE SHEET 41

NOTE: ALL RIGHT OF WAY STATION VALUES ARE BASED ON THE CENTERLINE OF RIGHT OF WAY

REVISIONS		
DATE	REV.	DESCRIPTION
2-19-21	ADDENDUM #6	WATER SERVICE

NLC	1/13/20	PARCEL NUMBER FORMAT
REV. BY	DATE	DESCRIPTION
DATE COMPLETED: 12/3/2018		

#FILES#
#DATE#
#TIME#
#USER#

6