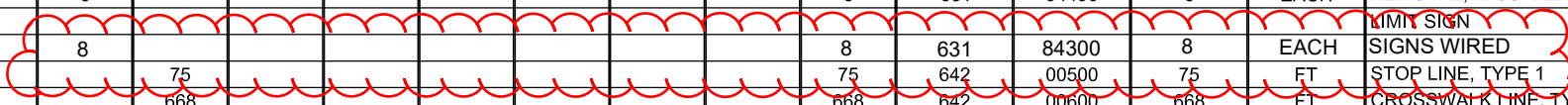


Z:\Projects (U)\2018\18-094 City of Aurora - Citywide Traffic Signal Improvement Project - Aurora\107761\General & Sub-Summary\107761GS001.dwg 20-Nov-20 8:33 AM

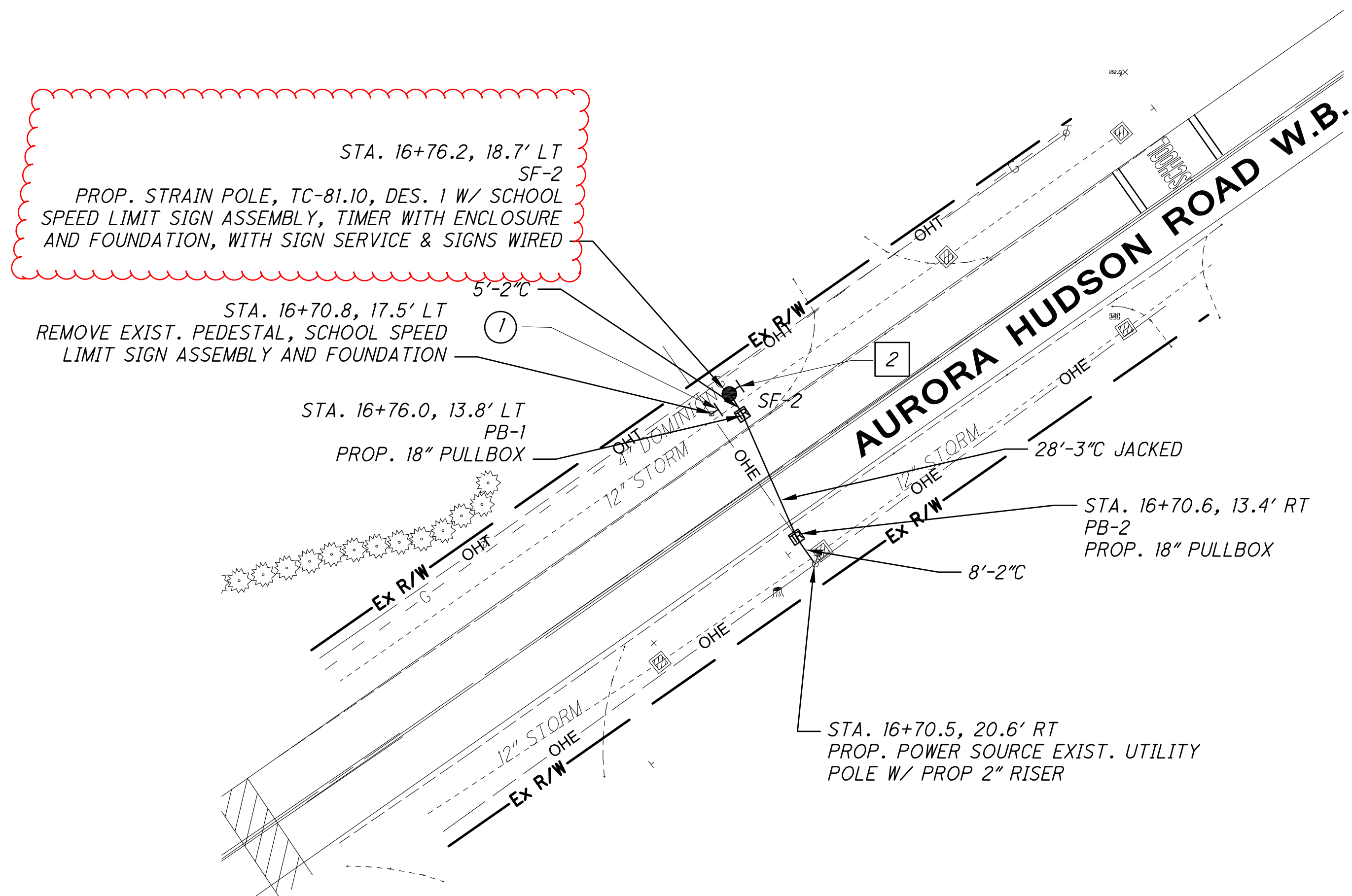
SHEET NUM.													PART.	ITEM	ITEM	GRAND	UNIT	DESCRIPTION	SEE SHEET NO.	
4	5	6	13	20	25	26	27	28	29	30	31	114	01/MPO/O T	EXT	TOTAL					
ROADWAY																				
1,200	1,200			192									2,592	202	30001	2,592	SF	WALK REMOVED, AS PER PLAN	4,5	
				113									113	202	32000	113	FT	CURB REMOVED		
				15									15	203	20001	15	CY	EMBANKMENT, AS PER PLAN	5	
22													22	410	10000	22	CY	TRAFFIC COMPACTED SURFACE, TYPE A	4	
1,200	1,200			875									3,275	608	10000	3,275	SF	4" CONCRETE WALK	4,5	
90				155									245	608	52000	245	SF	CURB RAMP	4	
24				16									40	608	53020	40	SF	DETECTABLE WARNING	4	
				113									113	609	26000	113	FT	CURB, TYPE 6		
				6.3									6.3	659	00300	6.3	CY	TOPSOIL		
200				56									256	659	10000	256	SY	SEEDING AND MULCHING	4	
TRAFFIC CONTROL																				
				182									182	630	03100	182	FT	GROUND MOUNTED SUPPORT, NO. 3 POST		
				46									46	630	79100	46	EACH	SIGN HANGER ASSEMBLY, MAST ARM		
				7									7	630	79500	7	EACH	SIGN SUPPORT ASSEMBLY, POLE MOUNTED		
				854									854	630	80100	854	SF	SIGN, FLAT SHEET		
				2									2	630	85000	2	EACH	REMOVAL OF GROUND MOUNTED SIGN AND STORAGE		
				2									2	630	86002	2	EACH	REMOVAL OF GROUND MOUNTED POST SUPPORT AND DISPOSAL		
				12									12	630	87000	12	EACH	REMOVAL OF OVERHEAD MOUNTED SIGN AND STORAGE		
				8									8	631	84000	8	EACH	SIGN SERVICE		
				8									8	631	92991	8	EACH	SCHOOL SPEED LIMIT SIGN ASSEMBLY, 24" X 36", AS PER PLAN	6	
				8									8	631	93300	8	EACH	TIMER WITH ENCLOSURE		
				6									6	631	94490	6	EACH	REMOVAL, MISC.:REMOVE EXISTING SCHOOL SPEED	6	
				8									8	631	84300	8	EACH	LIMIT SIGN		
				75									75	642	00500	75	FT	SIGNS WIRED		
				668									668	642	00600	668	FT	STOP LINE, TYPE 1		
				296									296	642	30000	296	FT	CROSSWALK LINE, TYPE 1		
																	FT	REMOVAL OF PAVEMENT MARKING		
TRAFFIC SIGNALS																				
												2,360	3,294	625	25400	3,294	FT	CONDUIT, 2", 725.04		
												1,323	1,323	625	25500	1,323	FT	CONDUIT, 3", 725.04		
												481	481	625	25600	481	FT	CONDUIT, 4", 725.04		
												876	225	1,101	625	25900	1,101	FT	CONDUIT, JACKED OR DRILLED, 3" DIA.	
												145	145	625	25900	145	FT	CONDUIT, JACKED OR DRILLED, 4" DIA.		
												1,766	2,360	4,126	625	29000	4,126	FT	TRENCH	
												944	944	625	29600	944	FT	TRENCH IN PAVED AREA, TYPE B		
												46	10	56	625	30700	56	EACH	PULL BOX, 725.08, 18"	
												14	14	625	30706	14	EACH	PULL BOX, 725.08, 24"		
												4	4	625	31600	4	EACH	PULL BOX, MISC.: 24" X 35" X 26"	6	
												75	75	625	32000	75	EACH	GROUND ROD		
												2,642	2,360	5,002	625	36010	5,002	FT	UNDERGROUND WARNING/MARKING TAPE	
			17										17	625	76000	17	EACH	ARC FLASH CALCULATIONS AND LABEL, 43/MONETA, 43/FIRE #2, 43/SQUIRES, 43/TREAT, 43/LENA 43/SYCAMORE, 43/BISSELL, 82/BISSELL, 82/AURORA COMMONS, 82/43, 82/306, 306/TREAT PIONEER/FIRE#1, 43/306/PIONEER, 43/AURORA-HUDSON, 43/AURORA FARMS, 43/GREENBRIAR	6	
													12	632	04000	12	EACH	VEHICULAR SIGNAL HEAD, MISC.:3-SECTION, 12" - 12" - 8", 1-WAY POLYCARBONATE	6	
													6	632	04803	6	EACH	VEHICULAR SIGNAL HEAD, (LED), 1-SECTION, 12" LENS, 1-WAY, POLYCARBONATE, AS PER PLAN	6	
													69	632	05007	69	EACH	VEHICULAR SIGNAL HEAD, (LED), 3-SECTION, 12" LENS, 1-WAY, POLYCARBONATE, AS PER PLAN	6	
													38	632	05087	38	EACH	VEHICULAR SIGNAL HEAD, (LED), 5-SECTION, 12" LENS, 1-WAY, POLYCARBONATE, AS PER PLAN	6	
													46	632	20731	46	EACH	PEDESTRIAN SIGNAL HEAD (LED), TYPE D2, COUNTDOWN, AS PER PLAN	6	
													88	632	25000	88	EACH	COVERING OF VEHICULAR SIGNAL HEAD		
													48	632	26001	48	EACH	PEDESTRIAN PUSHBUTTON, AS PER PLAN	6	
													34	632	26500	34	EACH	DETECTOR LOOP		
													19,979	632	40500	19,979	FT	SIGNAL CABLE, 5 CONDUCTOR, NO. 14 AWG		



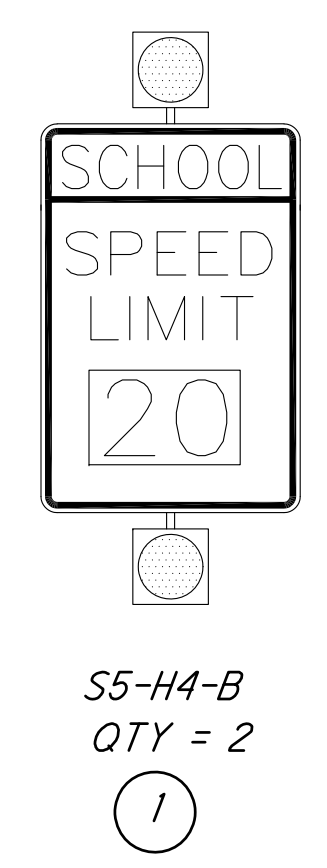
TRAFFIC SIGNAL
GENERAL SUMMARY

POR-AURORA SIGNALS

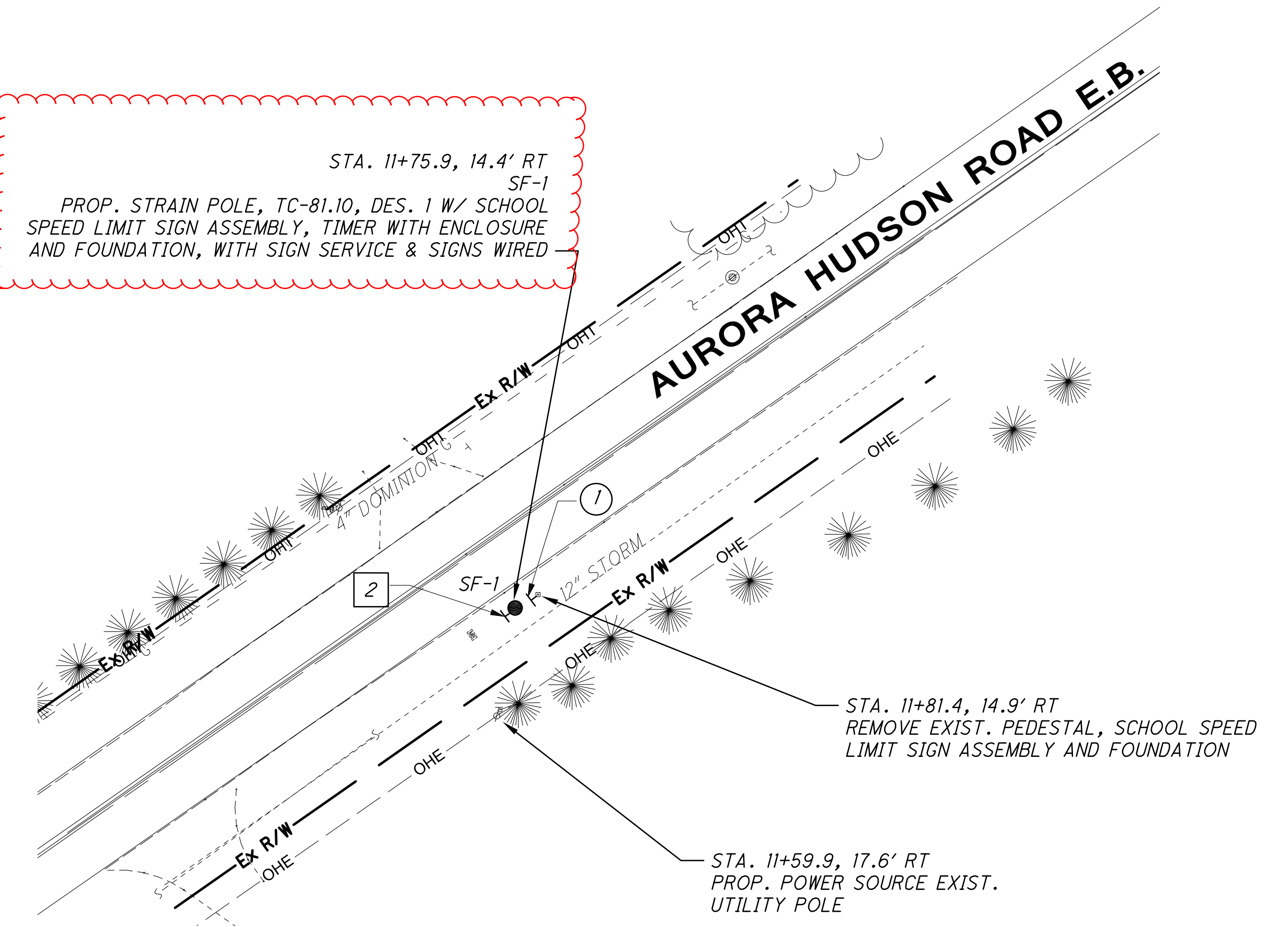
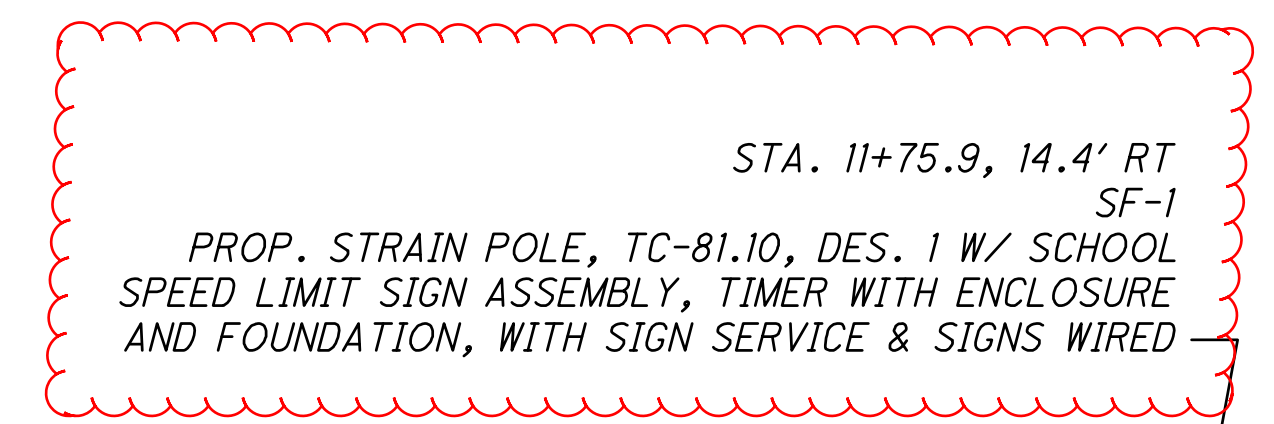
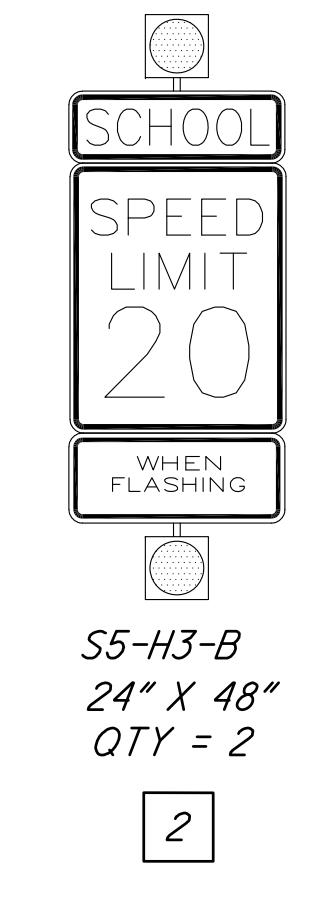
SHEET NO.	LOCATION	630							631					SIGN WIRED					
		GROUND MOUNTED SUPPORT, NO. 3 POST	SIGN HANGER ASSEMBLY, MAST ARM	SIGN SUPPORT ASSEMBLY, POLE MOUNTED	SIGN, FLAT SHEET	REMOVAL OF GROUND MOUNTED SIGN & STORAGE	REMOVAL OF GROUND MOUNTED POST & DISPOSAL	REMOVAL OF OVERHEAD SIGN & STORAGE	SIGN SERVICE	SCHOOL SPEED LIMIT SIGN ASSEMBLY, 24" X 48", AS PER PLAN	TIMER WITH ENCLOSURE	REMOVAL MISC.: REMOVE EXISTING SCHOOL SPEED LIMIT SIGN							
		FEET	EACH	EACH	SQ FT	EACH	EACH	EACH	EACH	EACH	EACH	EACH							
93	43 / GREENBRIAR / CHATHAM - SP-1		1		24.0														
	SP-2		1		25.5														
	SP-3		1	1	29.3														
	SP-4		1		24.0														
	NWC	14			3.8														
97	43 / LENA - SP-1		2		36.0														
	SP-2		1		12.0														
101	82 / EGGLESTON - SP-1		1		21.0														
	SP-2		2		41.0														
	NWC				3.1														
106	AURORA-HUDSON SF - EB									1	1	1	1	1	1				
	WB									1	1	1	1	1	1				
107	S CHILLICOTHE SF - NB									1	1	1	1	1	1				
	SB									1	1	1	1	1	1				
108	W PIONEER SF - EB					1	1			1	1	1		1	1				
	WB					1	1			1	1	1		1	1				
109	E GARFIELD SF - EB									1	1	1	1	1	1				
	WB									1	1	1	1	1	1				
SUBTOTALS FROM THIS SHEET		14	10	1	220	2	2	0		8	8	8	6	8					
SUBTOTALS FROM SHEET 24		168	36	6	635	0	0	12		0	0	0	0	0					
TOTALS CARRIED TO GENERAL SUMMARY		182	46	7	854	2	2	12		8	8	8	6	8					



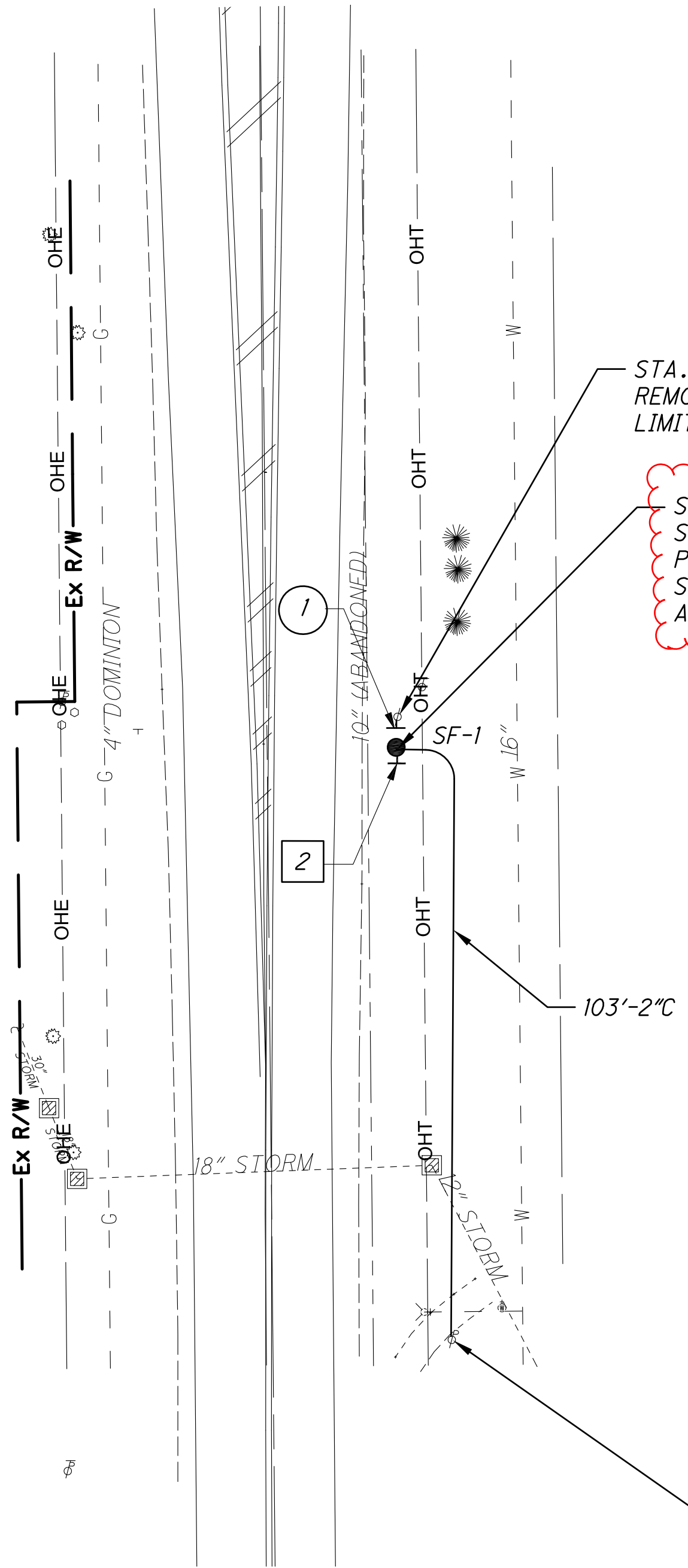
EXISTING FLASHER TO BE REMOVED



PROPOSED SCHOOL SPEED LIMIT SIGN ASSEMBLY WITH REAR FACING BEACON



S. CHILLICOTHE ROAD N.B.



STA. 13+39.6, 22.4' RT
REMOVE EXIST. WOOD POLE AND SCHOOL SPEED
LIMIT SIGN ASSEMBLY

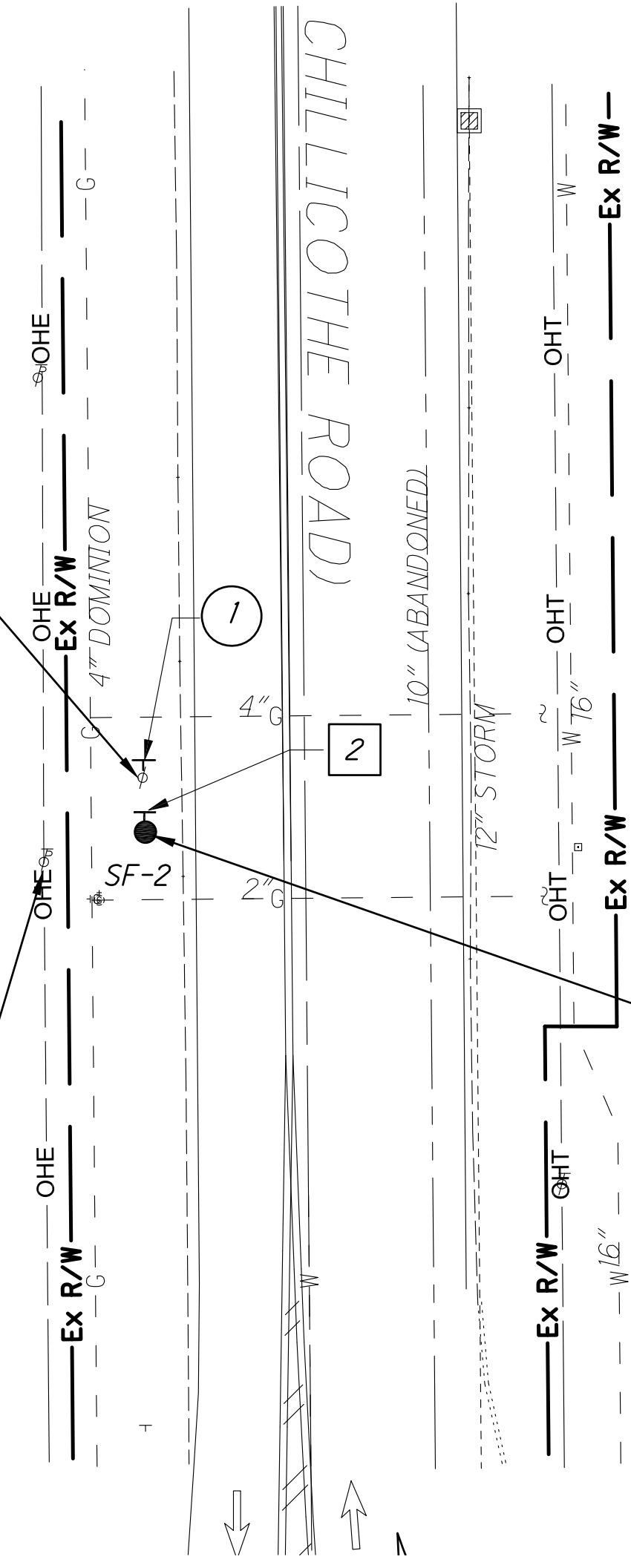
STA. 13+34.4, 22.2' RT
SF-1
PROP. STRAIN POLE, TC-81.10, DES. 1 W/ SCHOOL
SPEED LIMIT SIGN ASSEMBLY, TIMER WITH ENCLOSURE
AND FOUNDATION, WITH SIGN SERVICE & SIGNS WIRED

STA. 12+32.2, 30.7' RT
PROP. POWER SOURCE EXIST. UTILITY
POLE W/ PROP 2" RISER

STA. 21+00.2, 22.6' LT
REMOVE EXIST. WOOD POLE AND SCHOOL SPEED
LIMIT SIGN ASSEMBLY

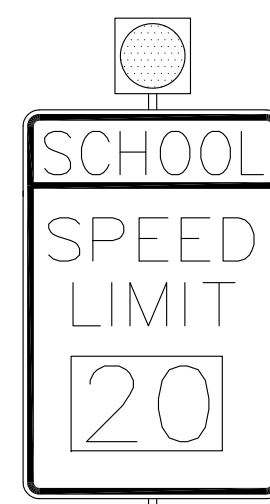
STA. 20+88.6, 36.4' LT
PROP. POWER SOURCE
EXIST. UTILITY POLE

S. CHILLICOTHE ROAD S.B.



STA. 20+92.6, 22.1' LT
SF-2
PROP. STRAIN POLE, TC-81.10, DES. 1 W/ SCHOOL
SPEED LIMIT SIGN ASSEMBLY, TIMER WITH ENCLOSURE
AND FOUNDATION, WITH SIGN SERVICE & SIGNS WIRED

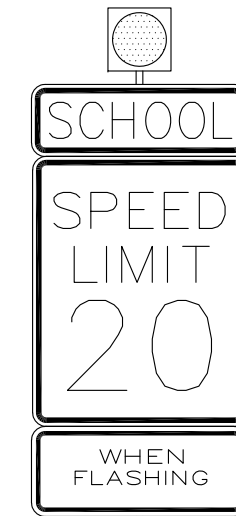
EXISTING FLASHER
TO BE REMOVED



S5-H4-B
QTY = 2

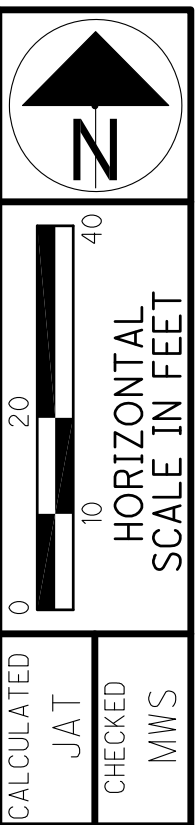
1

PROPOSED SCHOOL SPEED LIMIT
SIGN ASSEMBLY
WITH REAR FACING BEACON



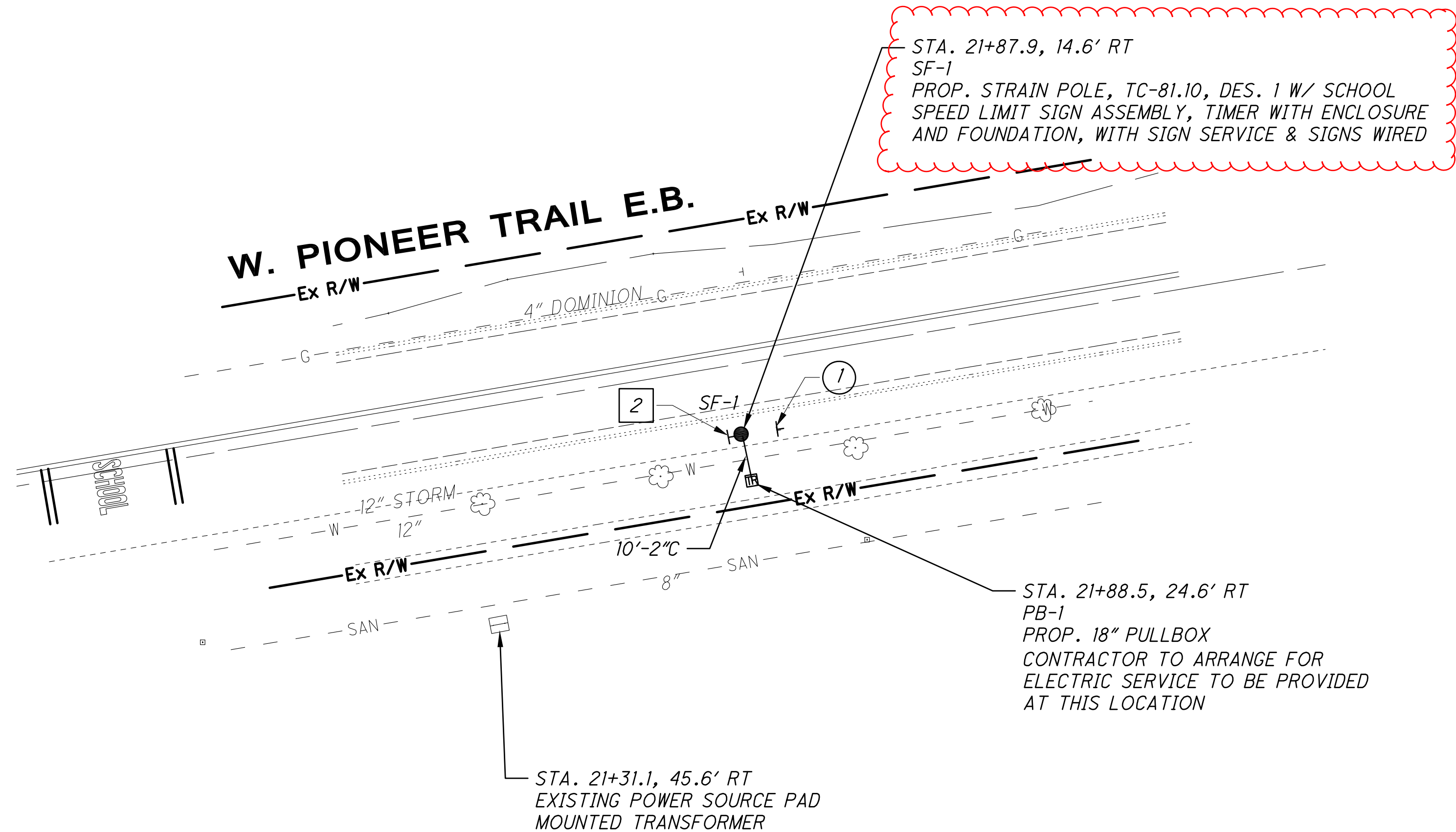
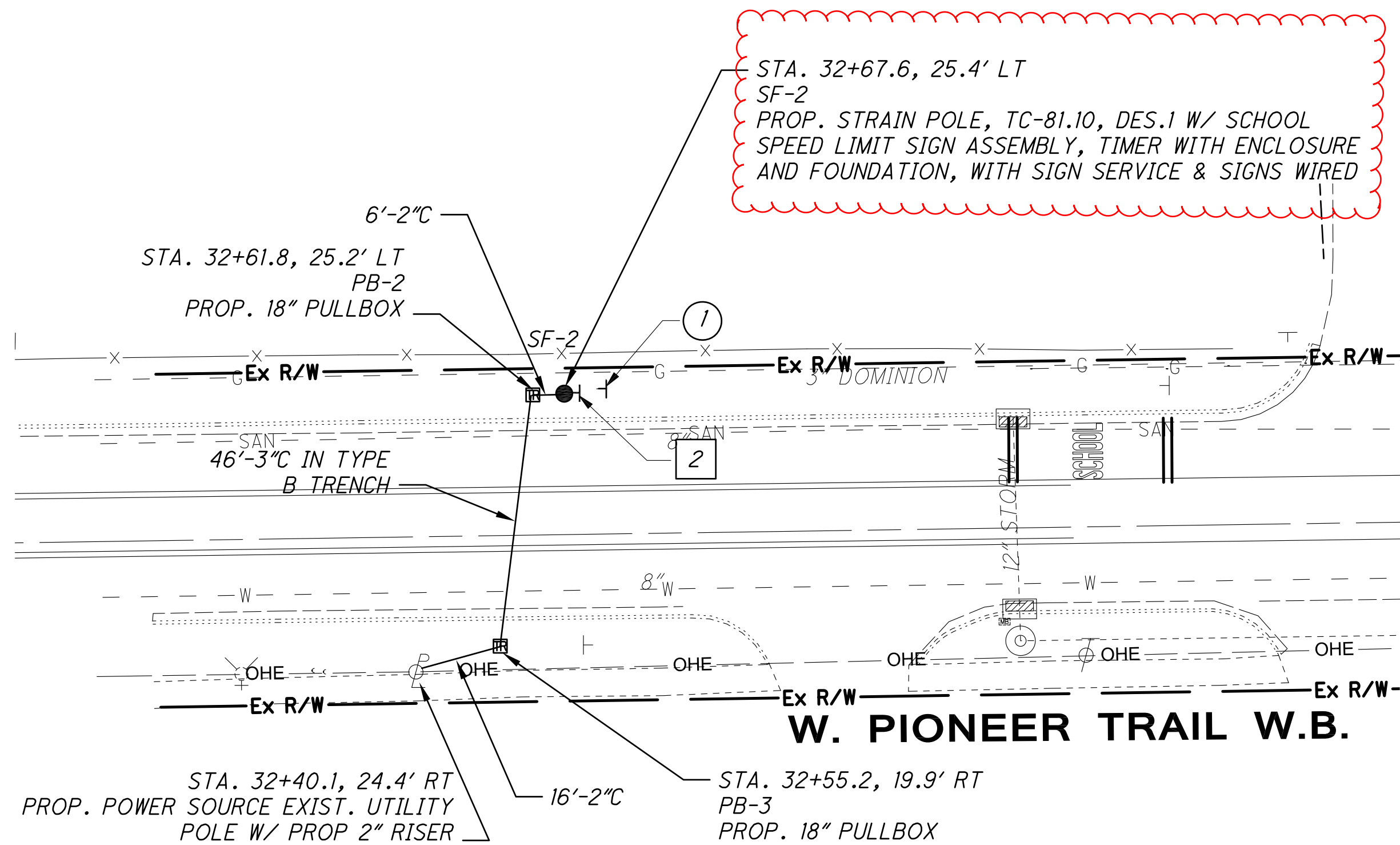
S5-H3-B
24" X 48"
QTY = 2

2

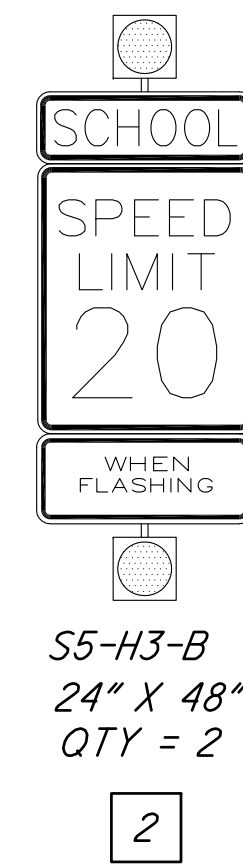


CALCULATED J.A.T. CHECKED M.W.S.
SCHOOL FLASHER PLAN
S. CHILLICOTHE RD. (S.R. 43) & MILLER/LEIGHTON SCHOOL

POR-AURORA SIGNALS
107
133



PROPOSED SCHOOL SPEED LIMIT
SIGN ASSEMBLY
WITH REAR FACING BEACON

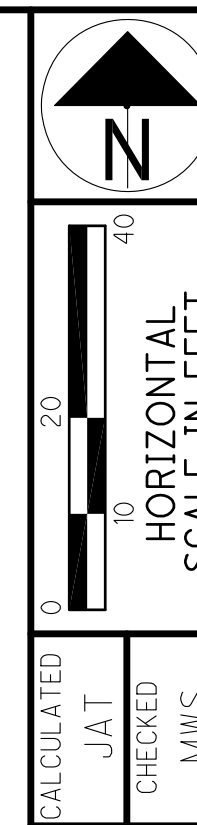


S5-H3-B
24" X 48"
QTY = 2

EXISTING SIGNS
TO BE REMOVED

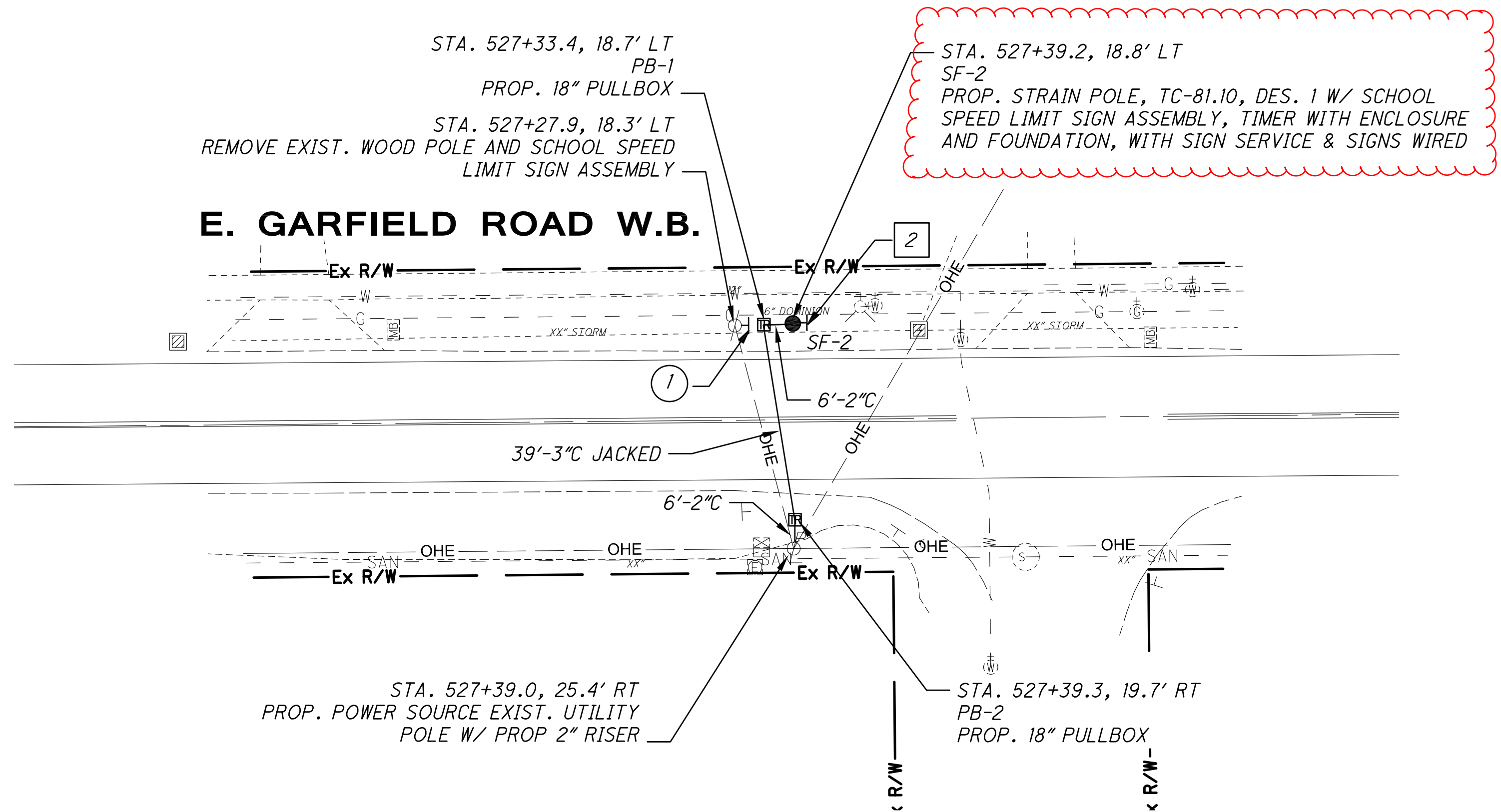
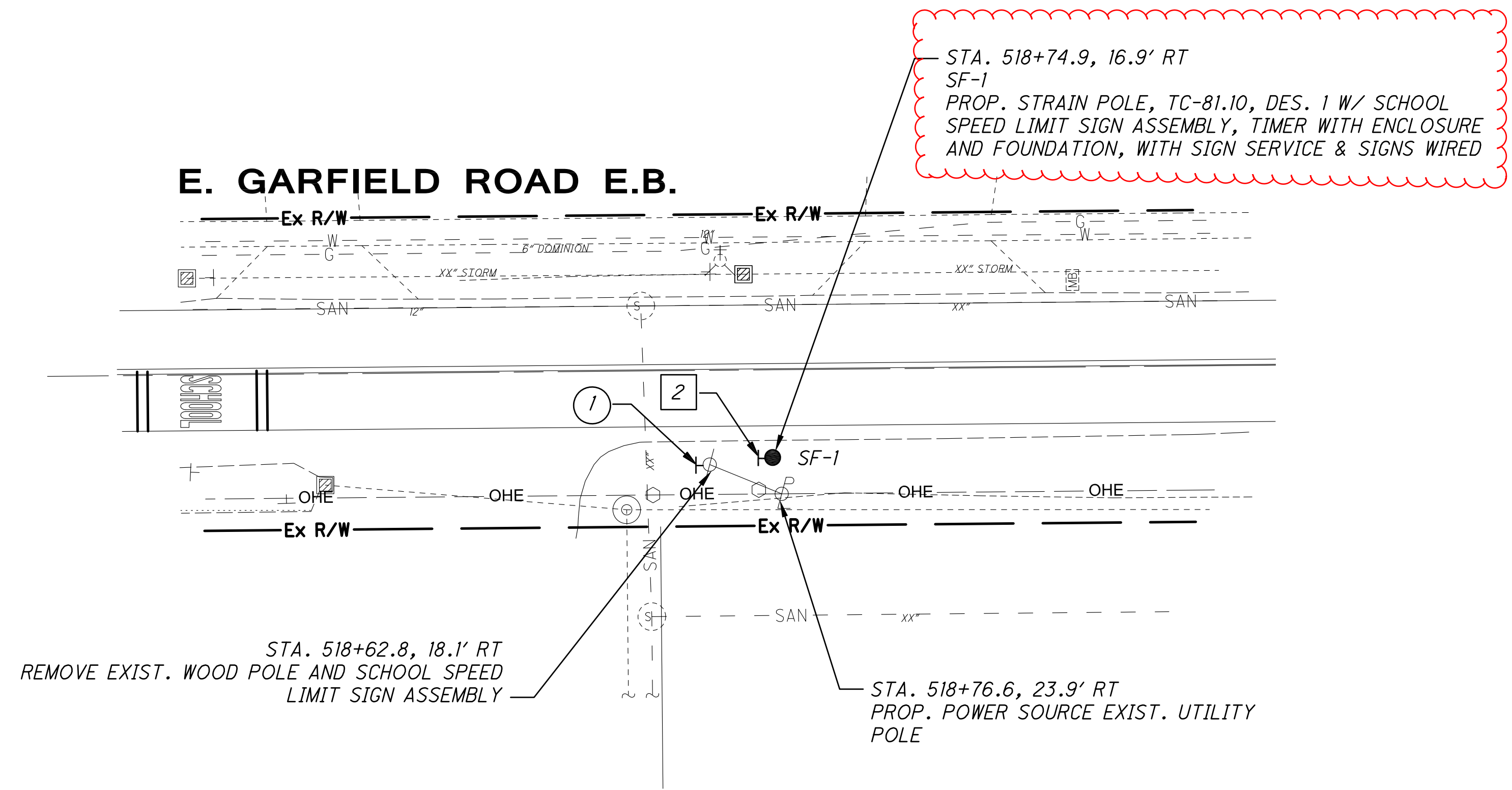


R2-1
QTY = 2

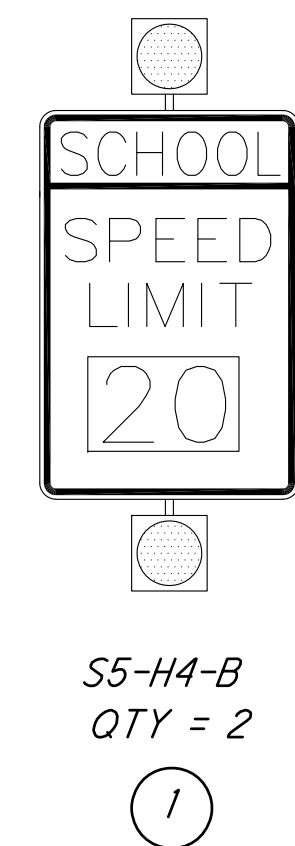


SCHOOL FLASHER PLAN
W. PIONEER TRAIL & HIGH SCHOOL DRIVE

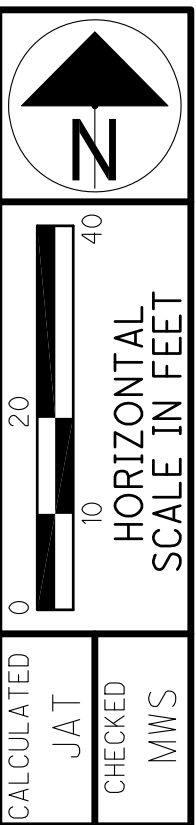
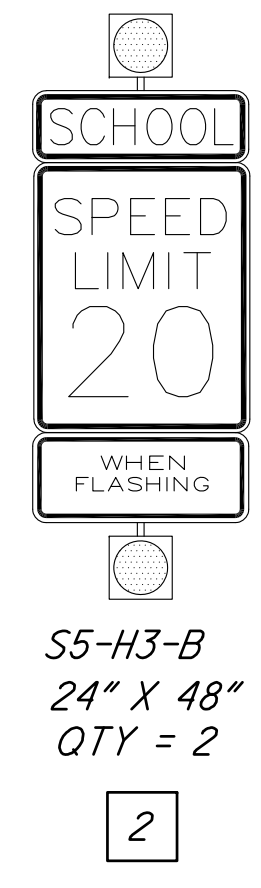
POR-AURORA SIGNALS



EXISTING FLASHER TO BE REMOVED



PROPOSED SCHOOL SPEED LIMIT SIGN ASSEMBLY WITH REAR FACING BEACON



SCHOOL FLASHER PLAN
E. GARFIELD RD. (S.R. 82) & CRADDOCK SCHOOL DRIVE

POR-AURORA SIGNALS