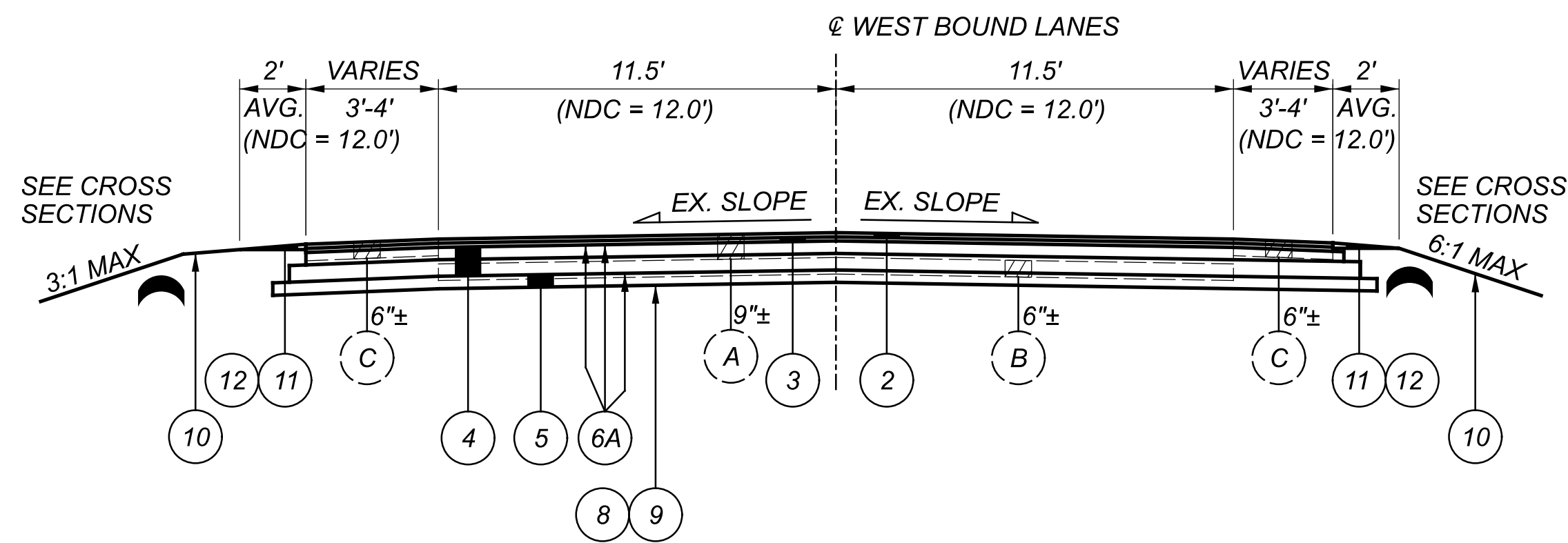
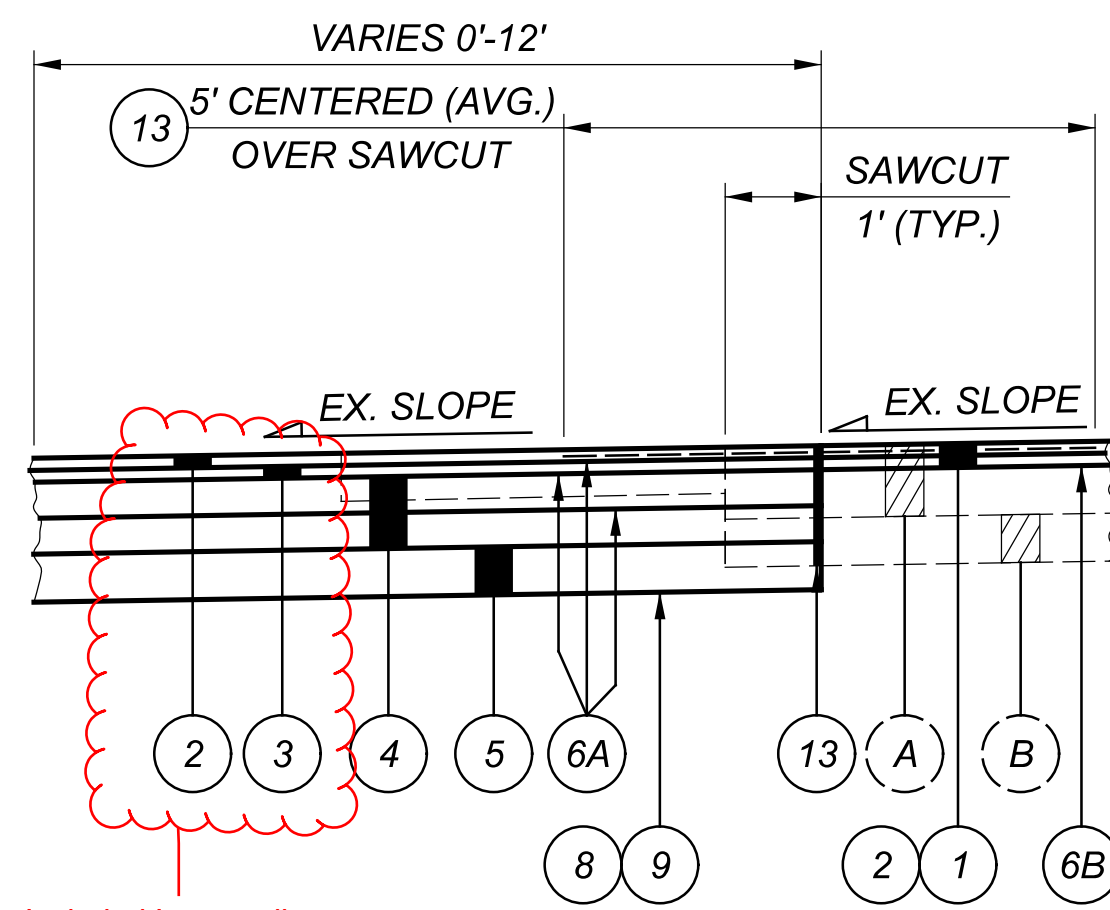


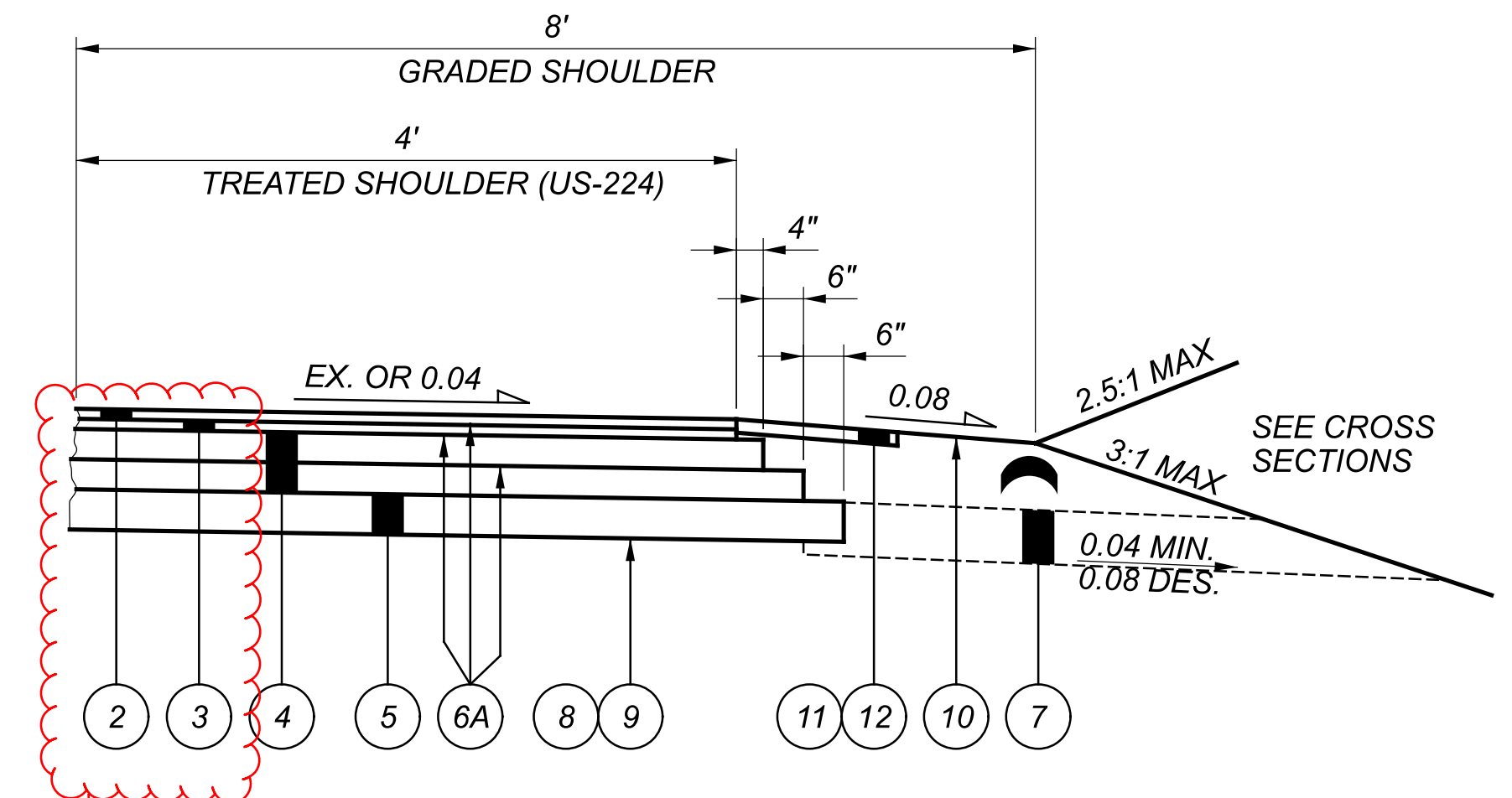
TYPICAL SECTION 1A - US 224 RESURFACING AND REMOVAL
 STA. 149+00.00 TO STA. 188+50.00 (SLM 9.07 TO SLM 9.81 = 0.74 MI)
 SEE TYPICAL SECTION 1B FOR FULL DEPTH STATIONING



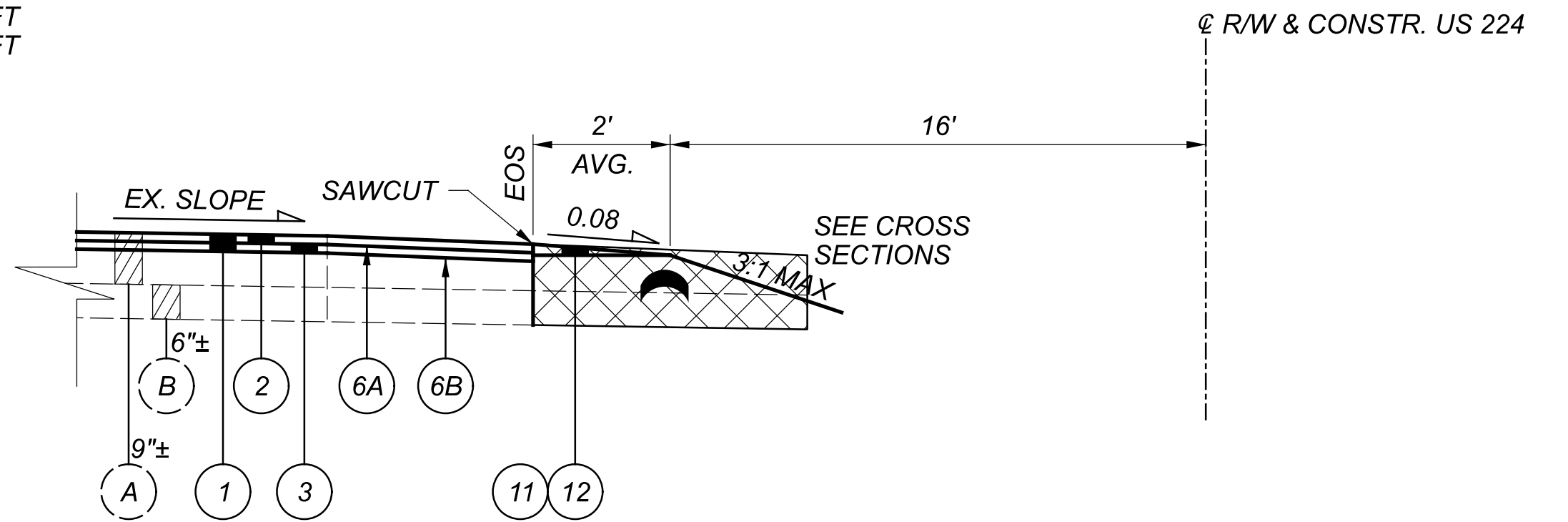
TYPICAL SECTION 1B - US 224 FULL DEPTH AT CULVERTS
 STA. 160+12.44 (LT) TO STA. 160+38.78 (LT) = 26.34 FT
 STA. 177+29.77 (LT - SKEWED) TO STA. 177+79.65 (LT - SKEWED) = 49.88 FT



PAVEMENT WIDENING DETAIL
 STA. 153+94.00 TO STA. 155+50.00 = 156 FT
 STA. 167+30.00 TO STA. 170+80.00 = 350 FT
 STA. 170+80.00 TO STA. 174+30.00 = 350 FT
 STA. 181+35.00 TO STA. 182+56.00 = 121 FT



COURSE/STEP DETAIL



TYPICAL SECTION 1C - US 224 UNDIVIDED APPROACHES
 STA. 149+50.00 TO STA. 153+94.00 = 444 FT
 STA. 172+73.00 TO STA. 173+73.00 = 100 FT
 STA. 182+56.00 TO STA. 187+00.00 = 444 FT

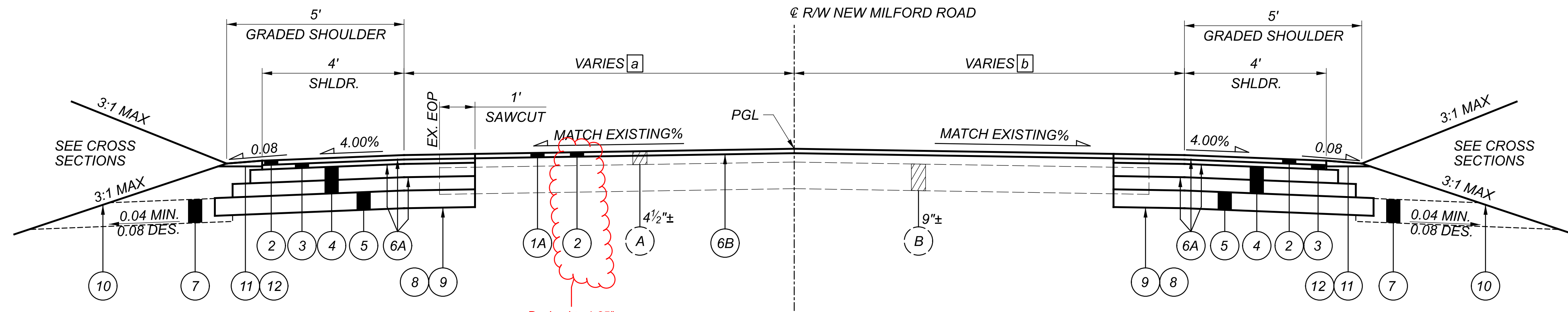
LEGEND:

- (A) EXISTING ASPHALT PAVEMENT T=9"±
- (B) EXISTING CONCRETE BASE T=6"±
- (C) EXISTING ASPHALT SHOULDERS T=6"±
- ITEM 202 - PAVEMENT REMOVED
- (1) ITEM 254 - PAVEMENT PLANING, ASPHALT CONCRETE (T = 3")
- (2) ITEM 441 - ASPHALT CONCRETE SURFACE COURSE, TYPE 1, (449), PG70-22M, AS PER PLAN (T = 1.25")
- (3) ITEM 441 - ASPHALT CONCRETE INTERMEDIATE COURSE, TYPE 2, (449) (T = 1.75")
- (4) ITEM 301 - ASPHALT CONCRETE BASE, PG64-22, (449) (T = 9")
- (5) ITEM 304 - AGGREGATE BASE (T = 6")
- (6A) ITEM 407 - NON-TRACKING TACK COAT @ 0.06 GAL/SY
- (6B) ITEM 407 - TACK COAT, 702.13 @ 0.09 GAL/SY
- (7) ITEM 605 - AGGREGATE DRAINS
- (8) ITEM 204 - SUBGRADE COMPACTION
- (9) ITEM 204 - PROOF ROLLING
- (10) ITEM 659 - SEEDING AND MULCHING
- (11) ITEM 408 - PRIME COAT, AS PER PLAN @ 0.40 GAL/SY
- (12) ITEM 617 - COMPACTED AGGREGATE, AS PER PLAN (T = 2")
- (13) ITEM 690 - SPECIAL - REINFORCEMENT MESH FOR TRANSVERSE AND/OR LONGITUDINAL JOINTS AND CRACKS (CENTER OVER SAW CUT)
- (14) ITEM 659 - TOPSOIL (T=4")
- 8' ROUNDING

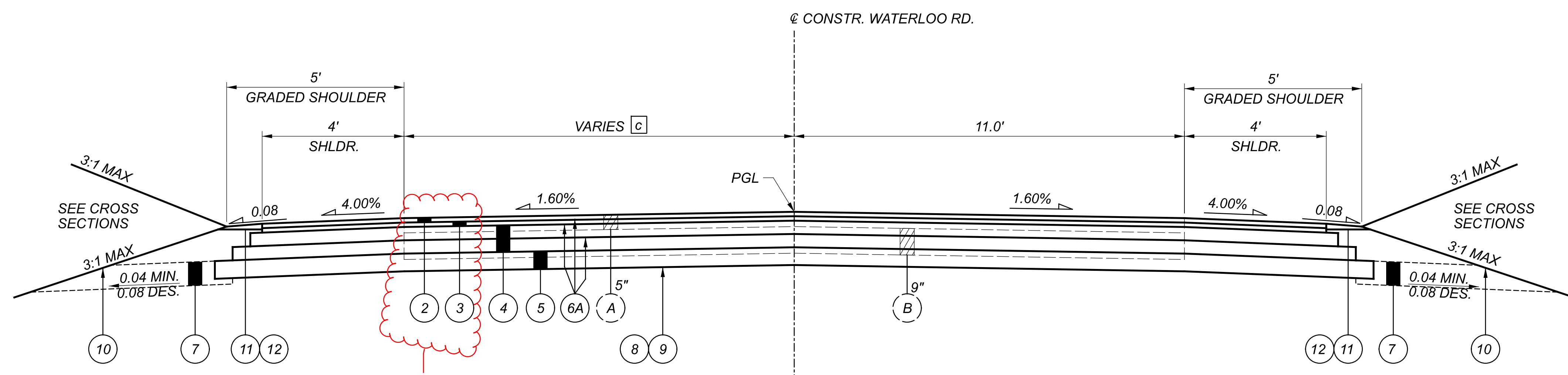
NOTES:

- 1. MAINTAIN EXISTING SLOPES WITH EMBANKMENT MATERIAL AND PROVIDE MINIMUM 8 FOOT ROUNDING AT CROWN LOCATION.





TYPICAL SECTION 2 - NEW MILFORD ROAD (CR-31) WIDENING AND RESURFACING
 STA. 68+00.00 TO STA. 69+47.00 = 147 FT
 STA. 69+69.00 TO STA. 74+90.00 = 521 FT



TYPICAL SECTION 3 WATERLOO ROAD (CR-87) SOUTH APPROACH
 STA. 500+00 TO STA. 502+59.93 = 259.93 FT

LEGEND

- (A) EXISTING ASPHALT PAVEMENT
- (B) EXISTING CONCRETE BASE
- (C) EXISTING ASPHALT SHOULDERS
- ☒ ITEM 202 - PAVEMENT REMOVED
- (1) ITEM 254 - PAVEMENT PLANING, ASPHALT CONCRETE (T = 3")
- (1A) ITEM 254 - PAVEMENT PLANING, ASPHALT CONCRETE (T = 1.25")
- (2) ITEM 441 - ASPHALT CONCRETE SURFACE COURSE, TYPE 1, (449), PG70-22M, AS PER PLAN (T = 1.25")
- (3) ITEM 441 - ASPHALT CONCRETE INTERMEDIATE COURSE, TYPE 2, (449) (T = 1.75")
- (4) ITEM 301 - ASPHALT CONCRETE BASE, PG64-22, (449) (T = 9")
- (5) ITEM 304 - AGGREGATE BASE (T = 6")
- (6A) ITEM 407 - NON-TRACKING TACK COAT @ 0.06 GAL/SY
- (6B) ITEM 407 - TACK COAT, 702.13 @ 0.09 GAL/SY
- (7) ITEM 605 - AGGREGATE DRAINS

- (8) ITEM 204 - SUBGRADE COMPACTION
- (9) ITEM 204 - PROOF ROLLING
- (10) ITEM 659 - SEEDING AND MULCHING
- (11) ITEM 408 - PRIME COAT, AS PER PLAN @ 0.40 GAL/SY
- (12) ITEM 617 - COMPACTED AGGREGATE, AS PER PLAN (T = 2")
- (13) ITEM 690 - SPECIAL - REINFORCEMENT MESH FOR TRANSVERSE AND/OR LONGITUDINAL JOINTS AND CRACKS (CENTER OVER SAW CUT)
- (14) ITEM 659 - TOPSOIL (T=4")


NOTES:

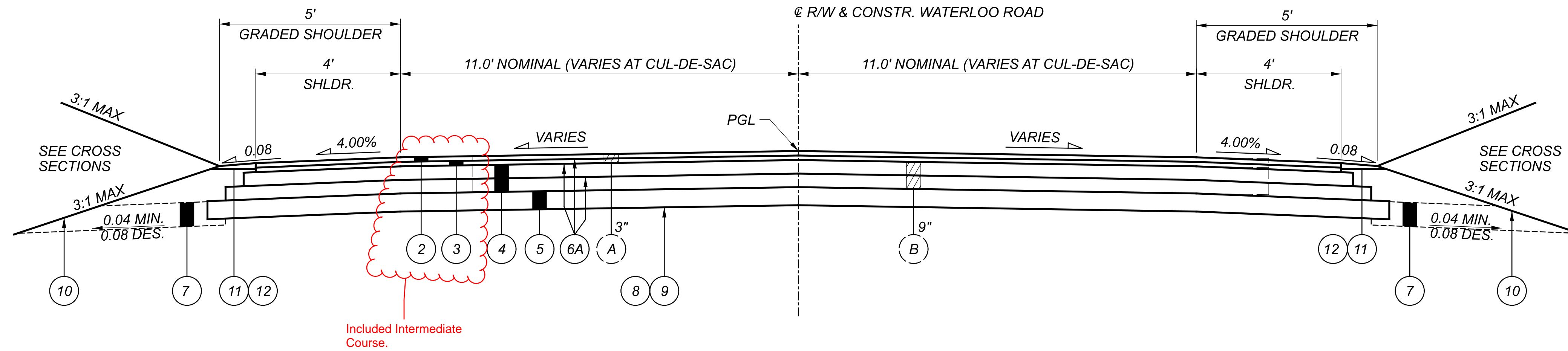
- [a] STA. 68+00.00 TO STA. 69+11.29, 10.0 FT
 STA. 69+11.29 TO STA. 73+95.00, 11.0 FT
- [b] STA. 68+00.00 TO STA. 68+75.00, 11.0 FT
 STA. 68+75.00 TO STA. 68+93.98, VARIES 11.0 FT TO 12.9 FT
 STA. 70+46.81 TO STA. 71+17.95, VARIES 25.2 FT TO 11.0 FT
 STA. 71+17.95 TO STA. 73+27.57, 11.0 FT
- [c] STA. 500+55.65 TO STA. 500+65.65, VARIES 13.5 FT TO 11.0 FT
 STA. 500+65.65 TO STA. 502+59.93, 11.0 FT

POR-224-9.07

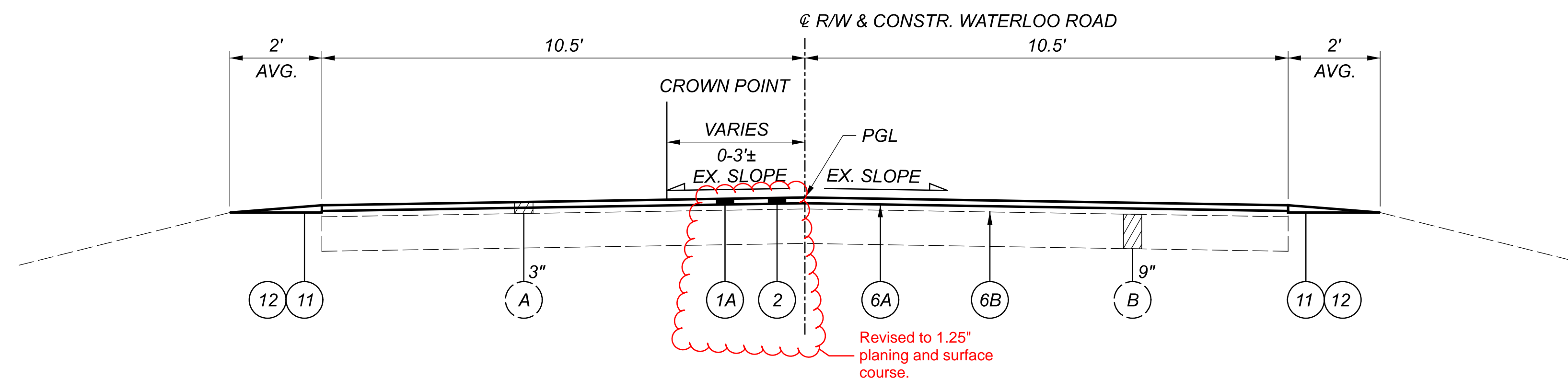
MODEL: Sheet 2 PAPER SIZE: 34x22 (in.) DATE: 12/9/2022 TIME: 12:56:28 PM USER: srtudek
 p:\vohodop-pw-bentley.com\shhodop-pw-102\Documents\01 Active Projects\District 04\Porlage\107920\400-Engineering\Roadway\Sheets\107920_GY001.dgn

TYPICAL SECTIONS

DESIGN AGENCY

 DESIGNER
 SJD
 REVIEWER
 MJA 07-11-22
 PROJECT ID
 107920
 SHEET TOTAL
 P.4 | 106



TYPICAL SECTION 4 - WATERLOO ROAD (CR-87) NORTH APPROACH AND CUL-DE-SAC
 STA. 16+50.00 TO STA. 18+12.00 = 162 FT



TYPICAL SECTION 5 - WATERLOO ROAD (CR-87) NORTH APPROACH RESURFACING
 STA. 11+87.00 TO STA. 16+50.00 = 463 FT

LEGEND

- (A) EXISTING ASPHALT PAVEMENT
- (B) EXISTING CONCRETE BASE
- (C) EXISTING ASPHALT SHOULDERS
- ☒ ITEM 202 - PAVEMENT REMOVED

- 1A ITEM 254 - PAVEMENT PLANING, ASPHALT CONCRETE (T = 1.25")
- 2 ITEM 441 - ASPHALT CONCRETE SURFACE COURSE, TYPE 1, (449), PG70-22M, AS PER PLAN (T = 1.25")
- 3 ITEM 441 - ASPHALT CONCRETE INTERMEDIATE COURSE, TYPE 2, (449) (T = 1.75")
- 4 ITEM 301 - ASPHALT CONCRETE BASE, PG64-22, (449) (T = 9")
- 5 ITEM 304 - AGGREGATE BASE (T = 6")
- 6A ITEM 407 - NON-TRACKING TACK COAT @ 0.06 GAL/SY
- 6B ITEM 407 - TACK COAT, 702.13 @ 0.09 GAL/SY
- 7 ITEM 605 - AGGREGATE DRAINS

- 8 ITEM 204 - SUBGRADE COMPACTION
- 9 ITEM 204 - PROOF ROLLING
- 10 ITEM 659 - SEEDING AND MULCHING
- 11 ITEM 408 - PRIME COAT, AS PER PLAN @ 0.40 GAL/SY
- 12 ITEM 617 - COMPACTED AGGREGATE, AS PER PLAN (T = 2")
- 13 ITEM 690 - SPECIAL - REINFORCEMENT MESH FOR TRANSVERSE AND/OR LONGITUDINAL JOINTS AND CRACKS (CENTER OVER SAW CUT)
- 14 ITEM 659 - TOPSOIL (T=4")

Revised to 1.25" Thick Planing.

TYPICAL SECTIONS

POR-224-9.07

MODEL: Sheet 3 PAPER SIZE: 34x22 (in.) DATE: 12/9/2022 TIME: 12:56:28 PM USER: srtudek
 p:\vohodol-pw-bentley.com\shiodo-pw-02\Documents\01 Active Projects\District 04\Porlage\107920\400-Engineering\Roadway\Sheets\107920_GY001.dgn

DESIGN AGENCY



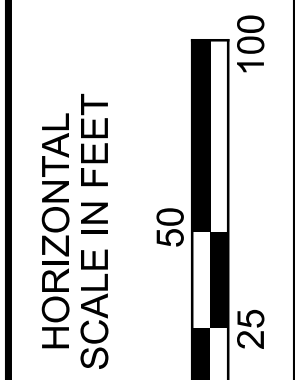
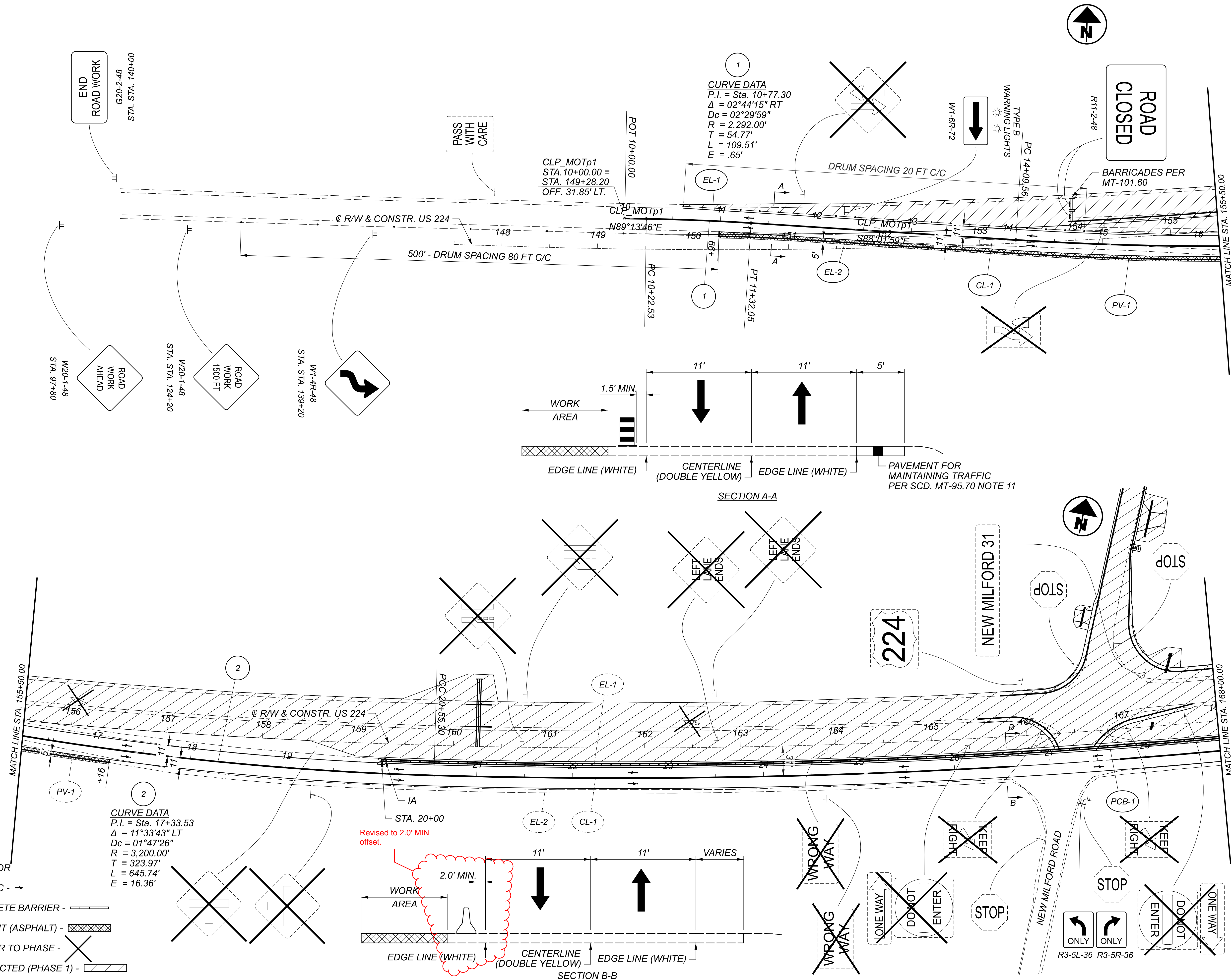
DESIGNER
 SJD

REVIEWER
 MJA 07-11-22

PROJECT ID
 107920

SHEET TOTAL
 P.5 | 106

- LEGEND:**
- IA - IMPACT ATTENUATOR
 - DIRECTION OF TRAFFIC - →
 - 32" PORTABLE CONCRETE BARRIER - [Symbol]
 - TEMPORARY PAVEMENT (ASPHALT) - [Symbol]
 - TO BE REMOVED PRIOR TO PHASE - [Symbol]
 - AREA TO BE CONSTRUCTED (PHASE 1) - [Symbol]

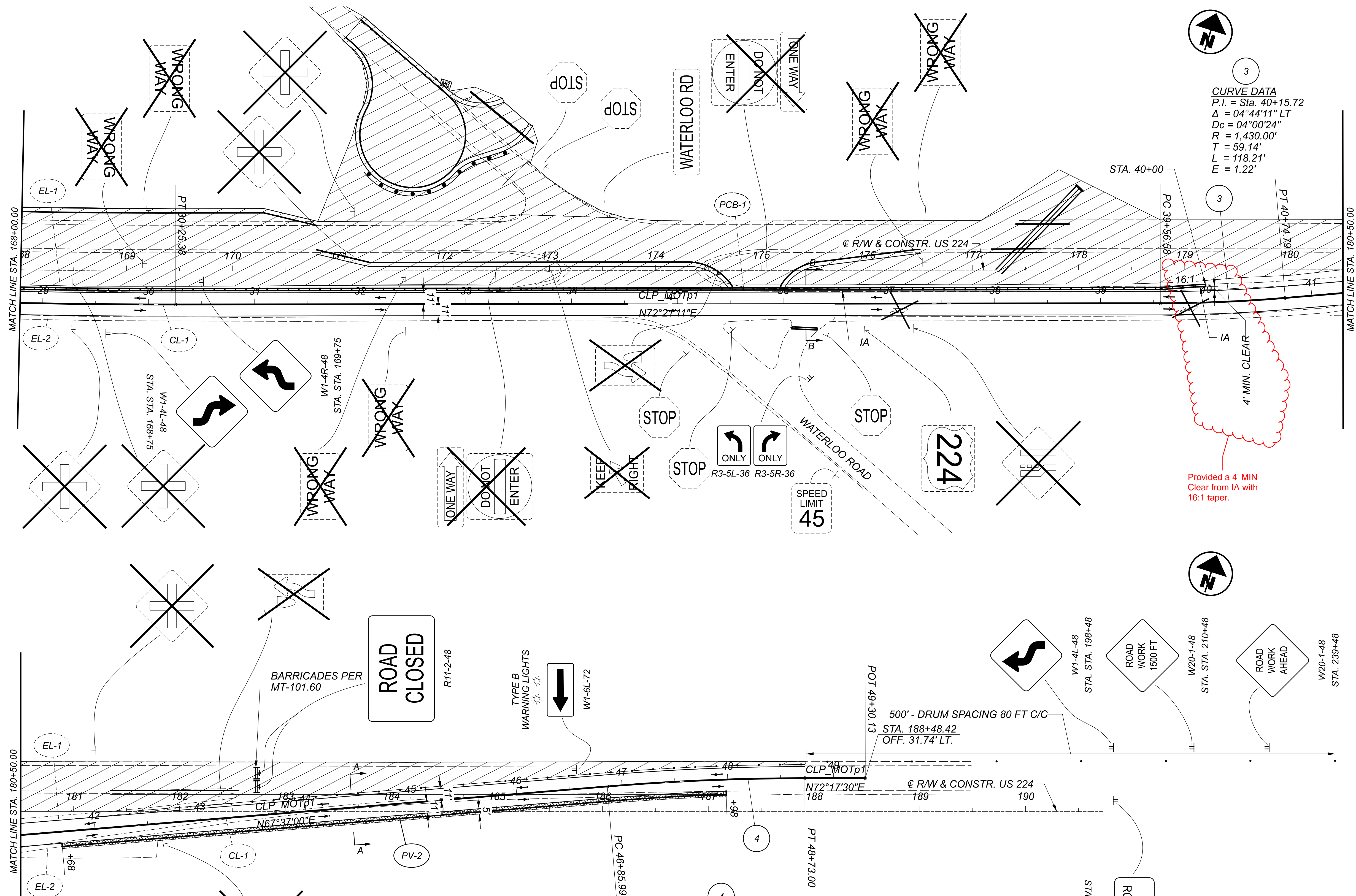


MAINTENANCE OF TRAFFIC - PHASE 1
 STA. 147+50 TO STA. 168+00

DESIGN AGENCY	[Logo]
DESIGNER	MJA
REVIEWER	LOB 07/28/22
PROJECT ID	107920
SHEET	TOTAL
P.14	106

LEGEND:

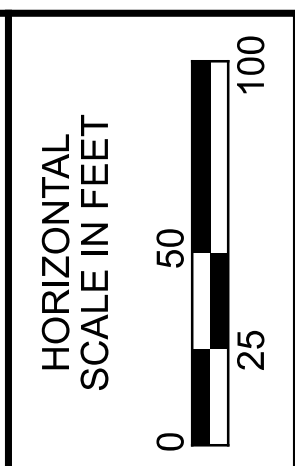
- IA - IMPACT ATTENUATOR
- DIRECTION OF TRAFFIC - →
- 32" PORTABLE CONCRETE BARRIER -
- TEMPORARY PAVEMENT (ASPHALT) -
- TO BE REMOVED PRIOR TO PHASE -
- AREA TO BE CONSTRUCTED (PHASE 1) -



3
 CURVE DATA
 P.I. = Sta. 40+15.72
 $\Delta = 04^{\circ}44'11''$ LT
 $D_c = 04^{\circ}00'24''$
 $R = 1,430.00'$
 $T = 59.14'$
 $L = 118.21'$
 $E = 1.22'$

4
 CURVE DATA
 P.I. = Sta. 47+79.54
 $\Delta = 04^{\circ}40'30''$ RT
 $D_c = 02^{\circ}29'59''$
 $R = 2,292.00'$
 $T = 93.56'$
 $L = 187.01'$
 $E = 1.91'$

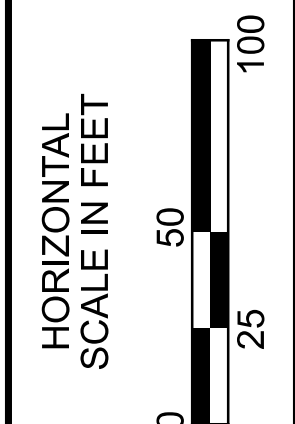
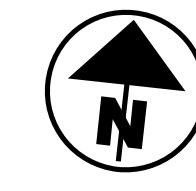
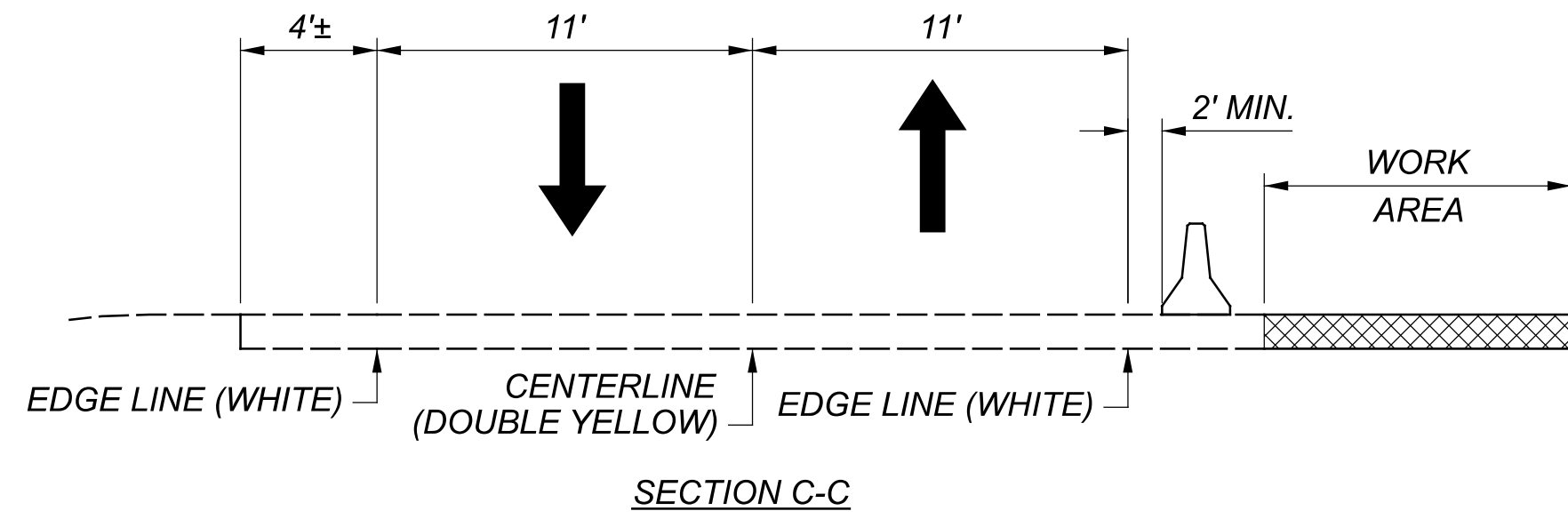
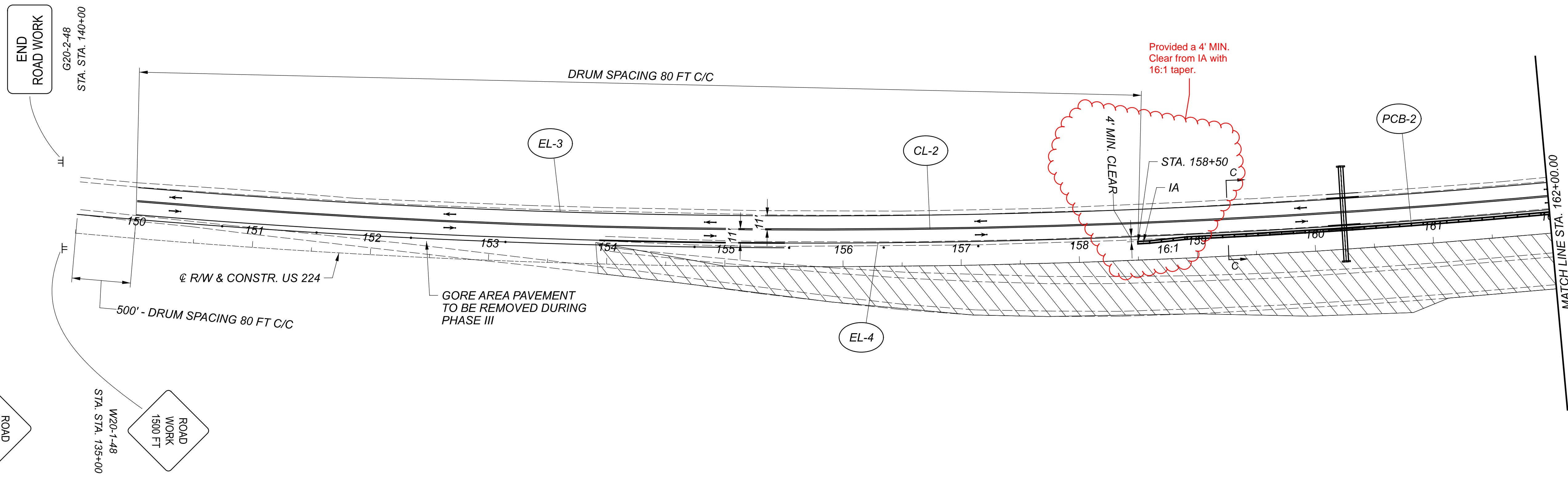
4' MIN. CLEAR
 Provided a 4' MIN
 Clear from IA with
 16:1 taper.



MAINTENANCE OF TRAFFIC - PHASE 1
 STA. 168+00 TO STA. 190+00

DESIGN AGENCY	
DESIGNER	MJA
REVIEWER	LOB 07/28/22
PROJECT ID	107920
SHEET	TOTAL
P.15	106

- LEGEND:**
- IA - IMPACT ATTENUATOR
 - DIRECTION OF TRAFFIC - →
 - 32" PORTABLE CONCRETE BARRIER -
 - AREA TO BE CONSTRUCTED (PHASE 2) -



MAINTENANCE OF TRAFFIC - PHASE 2
STA. 149+50 TO STA. 162+00

DESIGN AGENCY



DESIGNER	MJA
REVIEWER	LOB 07/28/22
PROJECT ID	107920
SHEET	TOTAL
P.16	106

SHEET NUM.													PART.		ITEM	ITEM EXT	GRAND TOTAL	UNIT	DESCRIPTION	SEE SHEET NO.
6	8	9	10	18	22	86	87	92	93	94	95	96	01/SAF/21	02/STR/04						
	10												10		611	05100	10	FT	12" CONDUIT, TYPE E	
	10												10		611	05200	10	FT	12" CONDUIT, TYPE F	
	20												20		611	97400	20	FT	CONDUIT, MISC.: TYPE B FOR DRAINAGE DISCHARGE CONTINUANCE	8
	20												20		611	97400	20	FT	CONDUIT, MISC.: TYPE C FOR DRAINAGE DISCHARGE CONTINUANCE	8
	20												20		611	97400	20	FT	CONDUIT, MISC.: TYPE E FOR DRAINAGE DISCHARGE CONTINUANCE	8
	20												20		611	97400	20	FT	CONDUIT, MISC.: TYPE F FOR DRAINAGE DISCHARGE CONTINUANCE	8
	2												2		611	99720	2	EACH	INSPECTION WELL	
PAVEMENT																				
3,600					2,833			298					6,433	298	252	01500	6,731	FT	FULL DEPTH PAVEMENT SAWING	
					2,256								2,256		254	01000	2,256	SY	PAVEMENT PLANING, ASPHALT CONCRETE (T=1.25")	Added 1.25" Planing and Revised Planing Quantities.
					12,288								12,288		254	01000	12,288	SY	PAVEMENT PLANING, ASPHALT CONCRETE (T=3")	
300													300		255	10010	300	SY	FULL DEPTH PAVEMENT REMOVAL AND RIGID REPLACEMENT, CLASS QC1	
					1,457		88						1,457	88	301	56000	1,545	CY	ASPHALT CONCRETE BASE, PG64-22, (449)	
					631	100	46						731	46	304	20000	777	CY	AGGREGATE BASE	
50													50		304	20000	50	CY	AGGREGATE BASE (FOR PAVEMENT REPAIR)	
					1,274								1,274		407	13900	1,274	GAL	TACK COAT, 702.13	
					1,701	20	19						1,721	19	407	20000	1,740	GAL	NON-TRACKING TACK COAT	
					774								774		408	10001	774	GAL	PRIME COAT, AS PER PLAN	Revised Quantities.
					675								675		441	70101	675	CY	ASPHALT CONCRETE SURFACE COURSE, TYPE 1, (449), AS PER PLAN	
					864								864		441	70300	864	CY	ASPHALT CONCRETE INTERMEDIATE COURSE, TYPE 2, (449)	
							17						17		441	70500	17	CY	ASPHALT CONCRETE SURFACE COURSE, TYPE 1, (449), (DRIVEWAYS)	
							25						25		452	10050	25	SY	6" NON-REINFORCED CONCRETE PAVEMENT, CLASS QC MS	Added 874.
					108								108		617	10101	108	CY	COMPACTED AGGREGATE, AS PER PLAN	
					3,950								3,950		874	20000	3,950	FT	LONGITUDINAL JOINT PREPARATION	
TRAFFIC CONTROL																				
												59	59		621	00100	59	EACH	RPM	
												48	48		621	54000	48	EACH	RAISED PAVEMENT MARKER REMOVED	
							45							45	630	02100	45	FT	GROUND MOUNTED SUPPORT, NO. 2 POST	
								6						6	630	08600	6	EACH	SIGN POST REFLECTOR (YELLOW)	
									6					6	630	80100	6	SF	SIGN, FLAT SHEET, 730.20	
	LS												LS		630	89902		LS	REMOVAL OF MISCELLANEOUS TRAFFIC CONTROL ITEM, STOP SIGN WITH BEACON	
								413.8					413.8		630	03100	413.8	FT	GROUND MOUNTED SUPPORT, NO. 3 POST	
								10					10		630	08600	10	EACH	SIGN POST REFLECTOR (RED)	
								216.8					216.8		630	80100	216.8	SF	SIGN, FLAT SHEET	
							4	6	29	21			56	4	630	84900	60	EACH	REMOVAL OF GROUND MOUNTED SIGN AND DISPOSAL	
													4		630	85100	4	EACH	REMOVAL OF GROUND MOUNTED SIGN AND REERECTION	
							4	10	29	21			60	4	630	86002	64	EACH	REMOVAL OF GROUND MOUNTED POST SUPPORT AND DISPOSAL	
											1.93		1.93		646	10000	1.93	MILE	EDGE LINE, 4"	
											0.86		0.86		646	10200	0.86	MILE	CENTER LINE	
											600		600		646	10300	600	FT	CHANNELIZING LINE, 8"	
											161		161		646	10400	161	FT	STOP LINE	
											8		8		646	20300	8	EACH	LANE ARROW	
MAINTENANCE OF TRAFFIC																				
			50										50		614	11110	50	hour	LAW ENFORCEMENT OFFICER WITH PATROL CAR FOR ASSISTANCE	
				4									4		614	12384	4	EACH	WORK ZONE IMPACT ATTENUATOR, 24" WIDE HAZARDS, (BIDIRECTIONAL)	
		20											LS		614	12420	LS		DETOUR SIGNING	
				80									20		614	13000	20	CY	ASPHALT CONCRETE FOR MAINTAINING TRAFFIC	
													80		614	13312	80	EACH	BARRIER REFLECTOR, TYPE 2	
				80									80		614	13350	80	EACH	OBJECT MARKER, ONE WAY	
			12										12		614	18601	12	SNMT	PORTABLE CHANGEABLE MESSAGE SIGN, AS PER PLAN	10
				2									2		614	21550	2	MILE	WORK ZONE CENTER LINE, CLASS III, 642 PAINT	
				4									4		614	22010	4	MILE	WORK ZONE EDGE LINE, CLASS I, 6"	
				300									300		614	23000	300	FT	WORK ZONE CHANNELIZING LINE, CLASS I, 8"	
				17									17		614	26000	17	FT	WORK ZONE STOP LINE, CLASS I	
				4									4		614	98200	4	EACH	WORK ZONE PAVEMENT MARKING, MISC.: LEFT TURN ARROW	18
				693									693		615	20000	693	SY	PAVEMENT FOR MAINTAINING TRAFFIC, CLASS A	
				4,000									4,000		622	41100	4,000	FT	PORTABLE BARRIER, UNANCHORED	
INCIDENTALS																				
													LS		614	11000	LS		MAINTAINING TRAFFIC	
													6		619	16010	6	MNTH	FIELD OFFICE, TYPE B	
													LS		623	10000	LS		CONSTRUCTION LAYOUT STAKES AND SURVEYING	
													LS		624	10000	LS		MOBILIZATION	

GENERAL SUMMARY

DESIGN AGENCY



DESIGNER
SJD

REVIEWER
MJA 07-11-22

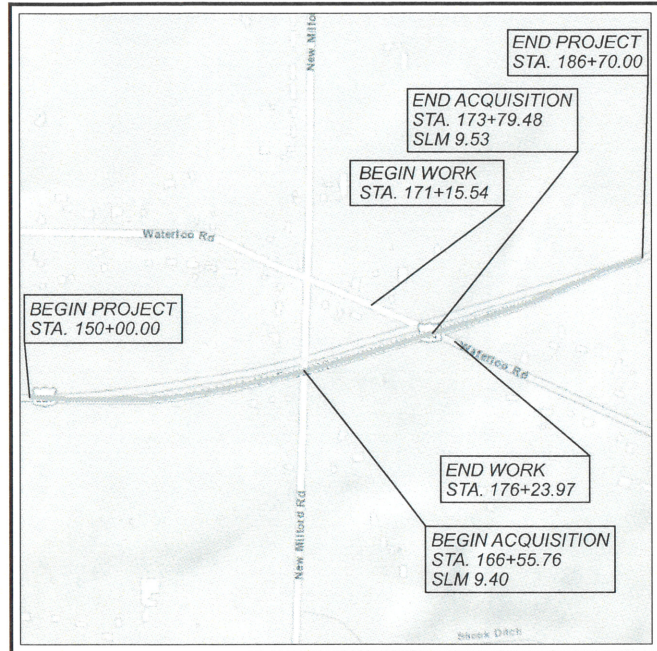
PROJECT ID
107920

SHEET TOTAL
P.20 | 106

Revised to 1.25" paving
Removed 1.5" surface course.

Added 874

STATION RANGE		TYPICAL SECTION	SIDE	DISTANCE (D)	AVERAGE WIDTH (W)	SURFACE AREA (A) A=D*W/9	CADD GENERATED AREA	202	204	204	252	254	254	441	441	301	304	407	407	408	617	SPECIAL	874	
				FT	FT	SQ YD	SQ YD	SY	SY	HOUR	FT	SY	SY	CY	CY	CY	CY	GAL	GAL	GAL	CY	SY	FT	
US 224																								
149+00.00	TO	188+50.00	1A	LT/RT	3950.00		11254.35	11254.35															3950.00	
149+00.00	TO	153+94.00	1A	LT	494.00	31.44	1725.57																	
149+00.00	TO	153+94.00	1A	LT	494.00	4.00	219.56																	
153+94.00	TO	155+50.00	1A	LT	156.00	22.51	390.17																	
153+94.00	TO	155+50.00	1A	LT	156.00	4.00	69.33																	
153+94.00	TO	155+50.00	1A	LT	156.00	7.23	125.32		125.32	0.04	168.85			4.35	6.09	31.33	20.89	22.56					93.81	
153+94.00	TO	155+50.00	1A	LT	156.00	0.33	5.72									1.43		0.34						
153+94.00	TO	155+50.00	1A	LT	156.00	0.83	14.44									3.61								
153+94.00	TO	155+50.00	1A	LT	156.00	1.33	23.11			23.11	0.01						3.85							
153+94.00	TO	155+50.00	1A	LT	156.00	4.00	69.33																	
155+50.00	TO	160+12.44	1A	LT	462.44	28.66	1472.44																	
160+12.44	TO	160+38.78	1B	LT	26.34	30.03	87.87																	
160+12.44	TO	160+38.78	1B	LT	26.34	4.00	11.71																	
160+38.78	TO	167+30.00	1A	LT	691.22	26.26	2016.83																	
160+38.78	TO	167+30.00	1A	LT	531.22	4.00	236.10																	
167+30.00	TO	170+80.00	1A	LT	350.00	23.07	896.97																	
167+30.00	TO	170+80.00	1A	LT	329.20	2.00	73.16																	
167+30.00	TO	170+80.00	1A	LT			619.36	619.36	0.21	347.02				21.51	30.11									192.79
167+30.00	TO	170+80.00	1A	LT			13.08	13.08	0.00															
167+30.00	TO	170+80.00	1A	LT			632.44																	
167+30.00	TO	170+80.00	1A	LT			19.63	19.63	0.01															
167+30.00	TO	170+80.00	1A	LT			671.72																	
167+30.00	TO	170+80.00	1A	LT			19.64	19.64	0.01															
167+30.00	TO	170+80.00	1A	LT	350.00	2.00	77.78																	
170+80.00	TO	174+30.00	1A	LT			1241.45																	
170+80.00	TO	174+30.00	1A	LT	251.17	2.00	55.82																	
170+80.00	TO	174+30.00	1A	LT			446.57	446.57	0.15	347.02				15.51	21.71									192.79
170+80.00	TO	174+30.00	1A	LT			13.03	13.03	0.00															
170+80.00	TO	174+30.00	1A	LT			459.60																	
170+80.00	TO	174+30.00	1A	LT			19.55	19.55	0.01															
170+80.00	TO	174+30.00	1A	LT			498.70																	
170+80.00	TO	174+30.00	1A	LT			19.55	19.55	0.01															
170+80.00	TO	174+30.00	1A	LT	350.00	2.00	77.78																	
174+30.00	TO	177+29.77	1A	LT			935.23																	
174+30.00	TO	177+29.77	1A	LT	377.12	2.00	83.80																	
177+29.77	TO	177+79.65	1B	LT			169.76																	
177+29.77	TO	177+79.65	1B	LT	50.28	4.00	22.35																	
177+79.65	TO	181+35.00	1A	LT	355.35	30.49	1203.85																	
177+79.65	TO	181+35.00	1A	LT	355.35	4.00	157.93																	
181+35.00	TO	182+56.00	1A	LT	121.00	24.94	335.24																	
181+35.00	TO	182+56.00	1A	LT	121.00	4.00	53.78																	
181+35.00	TO	182+56.00	1A	LT			83.21	83.21	0.03	347.02														192.79
181+35.00	TO	182+56.00	1A	LT			4.48	4.48	0.00															
181+35.00	TO	182+56.00	1A	LT			87.69																	
181+35.00	TO	182+56.00	1A	LT			6.72	6.72	0.00															
181+35.00	TO	182+56.00	1A	LT			101.14																	
181+35.00	TO	182+56.00	1A	LT			6.72	6.72	0.00															
182+56.00	TO	188+50.00	1A	LT	594.00	31.36	2069.60																	
182+56.00	TO	188+50.00	1A	LT	594.00	4.00	264.00																	
NEW MILFORD ROAD																								
68+00.00	TO	69+47.00	2	LT/RT	147.00		2754.36	2754.36																
68+00.00	TO	69+47.00	2	LT/RT	147.00		436.22																	
68+00.00	TO	69+47.00	2	LT	147.00		124.02																	121.04
68+00.00	TO	69+47.00	2	LT	147.00		273.30																	
68+00.00	TO	69+47.00	2	LT	147.00		152.79	152.79	0.05															
68+00.00	TO	69+47.00	2	LT	208.90	1.00	23.21																	
68+00.00	TO	69+47.00	2	RT	147.00		251.87																	
68+00.00	TO	69+47.00	2	RT	147.00		532.36																	
68+00.00	TO	69+47.00	2	RT	147.00		284.92	284.92	0.09															
68+00.00	TO	69+47.00	2	RT	223.80	1.00	24.87																	
69+69.00	TO	74+90.00	2	LT/RT	521.00		1220.78																	
69+69.00	TO	73+95.00	2	LT	426.00		222.21																	
69+69.00	TO	73+95.00	2	LT	426.00		501.94																	
69+69.00	TO	73+95.00	2	LT	426.00		288.12	288.12	0.10															
69+69.00	TO	73+95.00	2	LT	510.90	1.00	56.77																	
69+69.00	TO	73+95.00	2	RT	426.00		712.40																	
69+69.00	TO	73+95.00	2	RT	426.00		1483.98	</																



LOCATION MAP

LATITUDE: 41°01'50" N LONGITUDE: 081°12'55" W



RIGHT OF WAY LEGEND SHEET POR-224-9.09

PORTAGE COUNTY
RANDOLPH TOWNSHIP
LOT 52; TOWNSHIP 1, RANGE VIII
CONNECTICUT WESTERN RESERVE

PROJECT DESCRIPTION

INTERSECTION IMPROVEMENTS AND LANE REDUCTIONS ON POR-224 AT NEW MILFORD AND WATERLOO ROADS. INCLUDES FOUR CULVERT REPLACEMENTS.

THIS IMPROVEMENT IS ESPECIALLY DESIGNED FOR THROUGH TRAFFIC AND HAS BEEN DECLARED A LIMITED ACCESS HIGHWAY OR FREEWAY BY ACTION OF THE DIRECTOR IN ACCORDANCE WITH THE PROVISIONS OF SECTION 5511.02 OF THE REVISED CODE OF OHIO.

UTILITY OWNERS	
TYPE	NAME & ADDRESS
NATURAL GAS	DOMINION EAST OHIO ATTN: 2ND FLOOR RELOCATION DESIGN 320 SPRINGSIDE DRIVE, SUITE 320 AKRON, OHIO 44333 EMAIL: relocation@dominionenergy.com PH: 330-664-2409; FAX: 888-504-0126

NOTES: THE LOCATION OF THE UNDERGROUND UTILITIES SHOWN ON THE PLANS ARE OBTAINED FROM THE OWNER OF THE UTILITIES AS REQUIRED BY SECTION 153.64 O.R.C.

INDEX OF SHEETS:

LEGEND SHEET	1
PROPERTY MAP / MONUMENTATION TABLE	2
RIGHT OF WAY PLAN / SUMMARY OF ADDITIONAL RIGHT OF WAY	3 - 4

STRUCTURE KEY

	RESIDENTIAL
	COMMERCIAL
	OUT-BUILDING

PLANS PREPARED BY:

FIRM NAME : THOMAS FOK & ASSOCIATES, INC.
 R/W DESIGNER: JOSEPH P. SLIFKA, JR. PE
 R/W REVIEWER: FRANKLIN D. SNYDER, JR. PS
 FIELD REVIEWER: FRANKLIN D. SNYDER, JR. PS
 PRELIMINARY FIELD REVIEW DATE: 06/29/21
 TRACINGS FIELD REVIEW DATE: 08/09/2021
 OWNERSHIP UPDATED BY: FRANKLIN D. SNYDER, JR. PS
 DATE COMPLETED: 08/05/2021
 PLAN COMPLETION DATE: 08/09/2021

TYPES OF TITLE LEGEND:
LA = LIMITED ACCESS EASEMENT

I, BRIAN C. MEADE, P.S. HAVE CONDUCTED A SURVEY OF THE EXISTING CONDITIONS FOR THE OHIO DEPARTMENT OF TRANSPORTATION BEGINNING IN APRIL 2018. THE RESULTS OF THAT SURVEY ARE CONTAINED HEREIN.

THE HORIZONTAL COORDINATES EXPRESSED HEREIN ARE BASED ON THE OHIO STATE PLANE COORDINATE SYSTEM, NORTH ZONE (3401), NAD83(2011) (EPOCH:2010.0000) BY GNSS OBSERVATIONS IN APRIL 2018. THE PROJECT COORDINATES (US SURVEY FEET) ARE RELATIVE TO STATE PLANE GRID COORDINATES (METERS) BY A COMBINED SCALE FACTOR OF 0.99989069995 AND U.S. SURVEY FEET TO METER CONVERSION OF 3937/1200.

AS PART OF THIS PROJECT I HAVE REESTABLISHED THE EXISTING CENTERLINE U.S. ROUTE 224.

ALL OF MY WORK CONTAINED HEREIN WAS CONDUCTED IN ACCORDANCE WITH OHIO ADMINISTRATIVE CODE 4733-37 COMMONLY KNOWN AS "STANDARDS FOR BOUNDARY SURVEYS IN THE STATE OF OHIO" UNLESS NOTED. THE WORDS I AND MY AS USED HEREIN ARE TO MEAN EITHER MYSELF OR SOMEONE WORKING UNDER MY DIRECT SUPERVISION.

substituted
with signed
page

CONVENTIONAL SYMBOLS

County Line	-----	Edge of Shoulder (Ex)	-----
Township Line	-----	Edge of Shoulder (Pr)	-----
Section Line	-----	Ditch / Creek (Ex)	-----
Corporation Line	-----	Ditch / Creek (Pr)	-----
Fence Line (Ex)	-----	Tree Line (Ex)	-----
Center Line	-----	Ownership Hook Symbol	Example
Right of Way (Ex)	-----	Property Line Symbol	Example
Right of Way (Pr)	-----	Break Line Symbol	Example
Standard Highway Ease.(Ex)	-----	Tree (Pr) (Ex), Tree (Ex), Shrub (Ex)	
Standard Highway Ease.(Pr)	-----	Tree (Remove) (Ex), Shrub (Remove) (Ex)	
Temporary Right of Way	-----	Evergreen (Ex) (Remove), Stump (Remove)	
Channel Ease. (Pr)	-----	Wetland (Pr) (Grass (Pr), Aerial Target)	
Utility Ease. (Ex)	-----	Post (Ex) (Mailbox (Ex), Mailbox (Pr))	
Railroad	-----	Light (Ex) (Telephone Marker (Ex) -TEL)	
Guardrail (Ex)	-----	Fire Hydrant (Ex) (Water Meter (Ex))	
Construction Limits	-----	Water Valve (Ex) (Utility Valve Unknown (Ex))	
Edge of Pavement (Ex)	-----	Telephone Pole (Ex) (Power Pole (Ex))	
Edge of Pavement (Pr)	-----	Light Pole (Ex)	

BRIAN C. MEADE, PROFESSIONAL SURVEYOR NO. S-8168

DATE: 9-13-2022

I, FRANKLIN D. SNYDER, JR., P.S. HAVE PERFORMED A SURVEY OF THE EXISTING CONDITIONS FOR THE OHIO DEPARTMENT OF TRANSPORTATION BEGINNING IN MAY 2018. THE RESULTS OF THAT SURVEY ARE CONTAINED HEREIN.

AS PART OF THIS PROJECT I HAVE REESTABLISHED THE LOCATIONS OF THE EXISTING CENTERLINES OF NEW MILFORD ROAD AND WATERLOO ROAD (COUNTY HIGHWAY 87), EXISTING PROPERTY LINES AND RIGHTS OF WAY FOR THE PROPERTY TAKES CONTAINED HEREIN. ADDITIONALLY I HAVE CALCULATED THE GROSS TAKE, PRESENT ROAD OCCUPIED (PRO), NET TAKE, AND NET RESIDUE AS WELL AS PREPARED THE LEGAL DESCRIPTIONS NECESSARY TO ACQUIRE THE PARCELS SHOWN HEREIN.

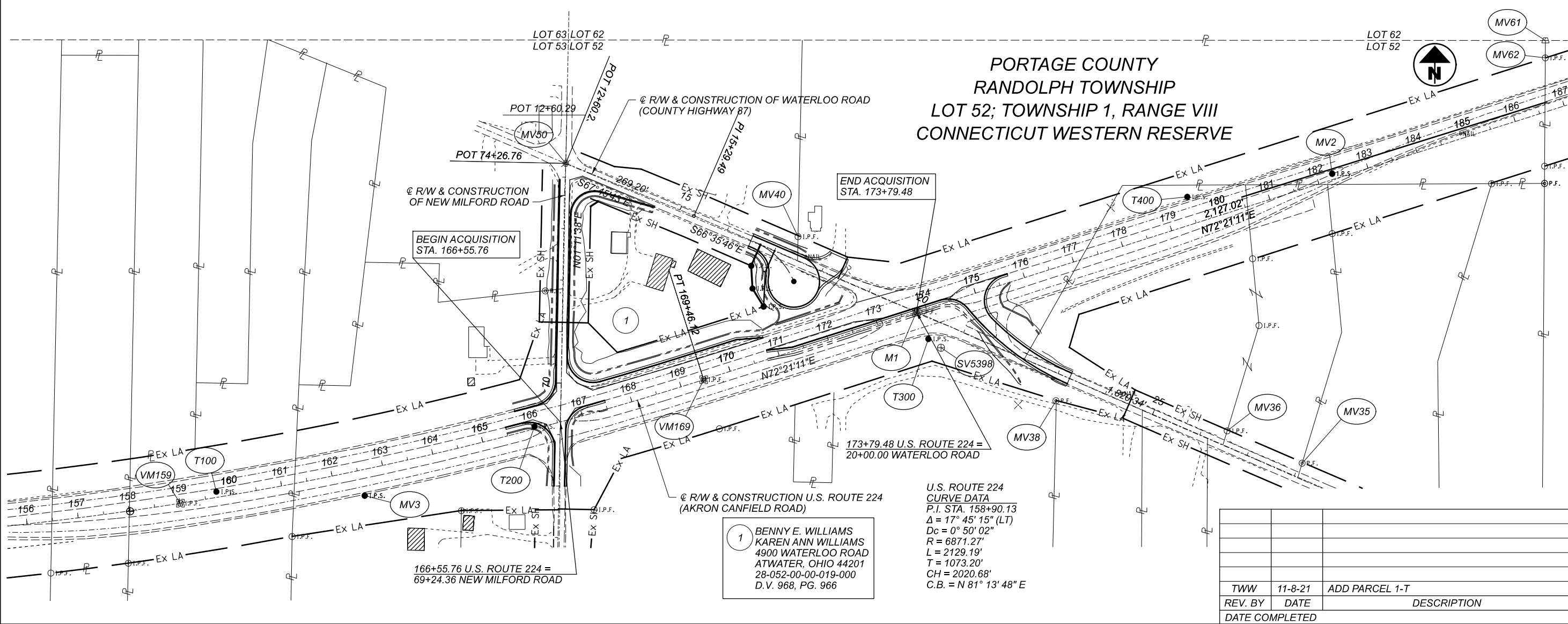
AS A PART OF THIS WORK I WILL SET RIGHT OF WAY MONUMENTS AT PROPERTY CORNERS, PROPERTY LINE INTERSECTIONS, POINTS ALONG THE RIGHT OF WAY AND/OR ANGLE POINTS ON THE RIGHT OF WAY AND OTHER POINTS SHOWN HEREIN UPON NOTIFICATION BY ODOT DISTRICT 4.

ALL OF MY WORK CONTAINED HEREIN WAS CONDUCTED IN ACCORDANCE WITH OHIO ADMINISTRATIVE CODE 4733-37 COMMONLY KNOWN AS "STANDARDS FOR BOUNDARY SURVEYS IN THE STATE OF OHIO" UNLESS NOTED. THE WORDS I AND MY AS USED HEREIN ARE TO MEAN EITHER MYSELF OR SOMEONE WORKING UNDER MY DIRECT SUPERVISION.

FRANKLIN D. SNYDER, JR., PROFESSIONAL SURVEYOR NO. S-7468

DATE: 08/09/2021

SURVEYORS SEAL		 	 SIGNER: JPS REVIEWER: DS PROJECT ID: 107920 SUBSET TOTAL: 1 5 SHEET TOTAL: 102 106



RIGHT OF WAY PROPERTY MAP / MONUMENTATION TABLE

**PORTAGE COUNTY
RANDOLPH TOWNSHIP
LOT 52; TOWNSHIP 1, RANGE VIII
CONNECTICUT WESTERN RESERVE**

**1 BENNY E. WILLIAMS
KAREN ANN WILLIAMS
4900 WATERLOO ROAD
ATWATER, OHIO 44201
28-052-00-00-019-000
D.V. 968, PG. 966**

**U.S. ROUTE 224
CURVE DATA
P.I. STA. 158+90.13
Δ = 17° 45' 15" (LT)
Dc = 0° 50' 02"
R = 6871.27'
L = 2129.19'
T = 1073.20'
CH = 2020.68'
C.B. = N 81° 13' 48" E**

TWW	11-8-21	ADD PARCEL 1-T
REV. BY	DATE	DESCRIPTION
DATE COMPLETED		

PROJECT: POR-224-925

PID: 107920

Import Units:	Ground Coord? TRUE	Unit Conversion Factor1 (sft->m): 0.304800610	Unitless Ground to Grid Factor: 0.99989069995	Unitless Factor:
Output Unit1:	U.S. Survey FT	sft	Unit Conversion Factor2 (sft->sft): 1.000000000	Primary Project Control: T100
Output Unit2:	Meters	m	Adjustment Factor1: 0.304767295	ODOT DISTRICT 4
Output Unit3:	U.S. Survey FT	sft	Adjustment Factor2: 0.99989069995	

updated page

GROUND COORDINATES - U.S. Survey FT

STATE PLANE GRID COORDINATES

MONUMENTS TO BE SET DURING CONSTRUCTION

PROJECT coordinates are scaled from GRID coordinates about the Ohio North Zone grid point N=0, E=0 (N 39° 27' 01.76097", W 89° 28' 32.98476")										Hertz. Datum: NAD83 (2011) Ohio State Plane, North Zone Vert. Datum: NAVD88					T100 defined by GPS from CORS using NAVD88. All other elevations are established by leveling from T100.			
NAME	Alignment Name	STATION	OFFSET (sft)	RT/LT	NORTH (sft)	EAST (sft)	ELEVATION (sft)	FEATURE	POINT TYPE	DESCRIPTION	NAME	NORTH (m)	EAST (m)	ORTHO HT (m)	NORTH (sft)	EAST (sft)	MONUMENT ASSEMBLY	REFERENCE MONUMENT
MV1	CLX_RW_U224	154+40.23	13.03	LT	499323.239	2321745.059	1187.65	IPINS	Project Control Points	5/8" FOK CONTROL	MV1	152177.3928	707591.9610	361.957	499268.6629	2321491.2921		
T100	CLX_RW_U224	159+73.24	11.04	LT	499388.975	2322272.925	1188.88	IPINS	Project Control Points	#5_ODOT_CAP	T100	152197.4270	707752.8373	362.332	499334.3917	2322019.1005		
MV3	CLX_RW_U224	162+54.08	50.03	RT	499381.297	2322560.985	1190.43	IPINS	Project Control Points	5/8" FOK CONTROL	MV3	152195.0870	707840.6286	362.805	499326.7146	2322307.1290		
T200	CLX_RW_U224	166+04.86	4.54	LT	499515.560	2322890.813	1191.39	IPINS	Project Control Points	#5_ODOT_CAP	T200	152230.0060	707941.1494	363.097	499460.9629	2322636.9209		
M1	CLX_RW_U224	173+79.35	0.11	LT	499737.954	2323632.420	1192.78	IPIN	Project Control Points	1" PIN IN MONBOX	M1	152303.7844	708167.1669	363.520	499683.3326	2323378.4469		
T300	CLX_RW_U224	173+85.91	56.83	RT	499685.680	2323655.933	1192.98	IPINS	Project Control Points	#5_ODOT_CAP	T300	152287.8529	708174.3329	363.581	499631.0640	2323401.9573		
SV5398	CLX_RW_U224	174+04.13	80.52	RT	499668.631	2323680.471	1192.93	BM	Project Control Points	MAGS-N_SIDE_TPP	SV5398	152282.6571	708181.8113	363.566	499614.0175	2323426.4926		
T400	CLX_RW_U224	179+48.77	53.63	LT	499615.576	2324158.813	1196.10	IPINS	Project Control Points	#5_ODOT_CAP	T400	152371.9372	708327.5942	364.532	499906.9306	2323904.7819		
MV2	CLX_RW_U224	182+30.61	11.20	LT	500006.577	2324440.254	1199.64	IPINS	Project Control Points	5/8" FOK CONTROL	MV2	152385.6519	708413.3683	365.611	499951.9263	2324186.1926		
T300	CLX_RW_Waterloo	20+42.17	38.63	RT	499685.680	2323655.933	1192.98	IPINS	Project Control Points	#5_ODOT_CAP	T300	152287.8529	708174.3329	363.581	499631.0640	2323401.9573		
T200	CLX_RW_New_Milford	69+14.51	50.12	LT	499515.560	2322890.813	1191.39	IPINS	Project Control Points	#5_ODOT_CAP	T200	152230.0061	707941.1494	363.097	499460.9632	2322636.9209		
M148	CLX_RW_U224	148+14.95	0.00	RT	499283.183	2321121.734	-	IPIN	Existing Centerline Control Point	1" PIN IN MONBOX	M148	152165.1851	707401.8920	-	499228.6115	2320868.0353		
VM159	CLX_RW_U224	159+00.58	0.13	LT	499366.558	2322203.018	-	IPIN	Existing Centerline Control Point	1"	VM159	152190.5949	707731.5320	-	499311.9767	2321949.2011		
-	CLX_RW_U224	166+55.76	0.00	RT	499524.360	2322941.131	-	CALPT	Existing Centerline Control Point	CL-CL U.S. 224 & NEW MILFORD	-	152238.8879	707956.4847	-	499469.7620	2322687.2334		
VM169	CLX_RW_U224	169+46.12	0.00	RT	499606.512	2323219.605	1189.05	IPIN	Existing Centerline Control Point	1" PIN IN MONBOX	VM169	152263.7252	708041.3544	362.384	499551.9052	2322965.6770		
-	CLX_RW_U224	173+79.48	0.00	RT	499737.887	2323632.575	-	CALPT	Existing Centerline Control Point	CL - CL U.S. 224 & WATERLOO	-	152303.7640	708167.2142	-	499683.2656	2323378.6018		
M2	CLX_RW_U224	190+73.14	0.00	RT	500251.321	2325246.534	-	IPIN	Existing Centerline Control Point	1" PIN IN MONBOX	M2	152460.2419	708659.0961	-	500196.6435	2324992.3844		
MV50	CLX_RW_Waterloo	12+60.29	0.00	RT	500026.653	2322951.599	-	RSPK	Existing Centerline Control Point	RAILROAD SPIKE FOUND	MV50	499972.0002	707959.6750	-	499972.0002	2322977.7003		
M1	CLX_RW_Waterloo	19+99.83	0.00	RT	499737.954	2323632.420	-	IPIN	Existing Centerline Control Point	1" PIN IN MONBOX	M1	152303.7844	708167.1669	-	499683.3326	2323378.4469		
-	CLX_RW_Waterloo	20+00.00	0.00	RT	499737.887	2323632.575	-	CALPT	Existing Centerline Control Point	CL - CL U.S. 224 & WATERLOO	-	152303.7640	708167.2142	-	499683.2656	2323378.6018		
-	CLX_RW_New_Milford	69+24.36	0.00	RT	499524.360	2322941.131	-	CALPT	Existing Centerline Control Point	CL-CL U.S. 224 & NEW MILFORD	-	152238.8879	707956.4847	-	499469.7620	2322687.2334		
MV50	CLX_RW_New_Milford	74+26.76	0.00	RT	500026.653	2322951.599	-	RSPK	Existing Centerline Control Point	RAILROAD SPIKE FOUND	MV50	499972.0002	707959.6750	-	499972.0002	2322977.7003		
MV40	CLX_RW_Waterloo	17+30.99	42.98	LT	499884.179	2323402.772	-	IPID	Existing Boundary Monuments	5/8 R_SZUCH	MV40	152348.3491	708097.1777	-	499829.5419	2323148.8240		
MV38	CLX_RW_Waterloo	23+17.34	50.37	RT	499565.615	2323903.807	-	IPID	Existing Boundary Monuments	1/2"	MV38	152251.2610	708249.8768	-	499511.0121	2323649.8042		
MV36	CLX_RW_Waterloo	26+45.77	28.11	LT	499507.184	2324236.385	-	IPIN	Existing Boundary Monuments	5/8"	MV36	152233.4532	708351.2357	-	499452.5876	2323982.3458		
MV35	CLX_RW_Waterloo	28+04.28	28.30	LT	499444.399	2324381.930	-	IPID	Existing Boundary Monuments	2"	MV35	152214.3184	708395.5931	-	499389.8095	2324127.8749		
MV39	CLX_RW_Waterloo	30+19.96	30.00	RT	499305.225	2324556.709	-	IPIN	Existing Boundary Monuments	5/8"	MV39	152171.9027	708448.8600	-	499250.6507	2324302.6348		
MV62	CLX_RW_U224	186+93.32	100.06	LT	500231.528	2324854.250	-	IPID	Existing Boundary Monuments	5/8 R_SZUCH	MV62	152454.2096	708539.5408	-	500176.8527	2324600.1433		
MV61	CLX_RW_U224	187+03.80	132.03	LT	500265.170	2324854.551	-	CSF	Existing Boundary Monuments	X IN 6"X6" STONE	MV61	152464.4626	708539.6325	-	500210.4911	2324600.4443		
RP01	CLX_RW_U224	171+00.00	100.00	LT	499748.454	2323335.926	-	IPINS	Proposed R/W Monuments	3/4" X 30" rebar w/ 2" aluminum cap stamped, ODOT R/W S-7468 THOMAS FOK & ASSOC.	RP01	152306.9844	708076.8053	-	499693.8315	2323081.9853		
RP02	CLX_RW_U224	170+90.00	140.00	LT	499783.542	2323314.274	-	IPINS	Proposed R/W Monuments	3/4" X 30" rebar w/ 2" aluminum cap stamped, ODOT R/W S-7468 THOMAS FOK & ASSOC.	RP02	152317.6781	708070.2064	-	499728.9156	2323060.3356		
RP03	CLX_RW_Waterloo	16+70.00	45.00	RT	499827.864	2323311.852	-	IPINS	Proposed R/W Monuments	3/4" X 30" rebar w/ 2" aluminum cap stamped, ODOT R/W S-7468 THOMAS FOK & ASSOC.	RP03	152331.1251	708069.4683	-	499773.0328	2323057.9139		

DESIGN AGENCY
TF ASSOCIATES

DESIGNER
JPS

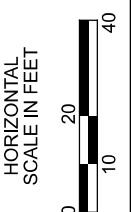
REVIEWER
FDS 08-09-21

PROJECT ID
107920

SUBSET TOTAL
2 5

SHEET TOTAL
103 106

PORTAGE COUNTY
 RANDOLPH TOWNSHIP
 LOT 52; TOWNSHIP 1, RANGE VIII
 CONNECTICUT WESTERN RESERVE



BASIS FOR BEARINGS:

ALL BEARINGS SHOWN ARE FOR PROJECT USE ONLY.
 BEARINGS ARE BASED ON THE POSITIONS OF MONUMENTS
 LOCATED BY ODOT DISTRICT 4 IN APRIL 2018 RELATIVE TO
 THE STATE PLANE COORDINATE SYSTEM, OHIO NORTH (3401)
 ZONE, NAD83(2011) (EPOCH:2010.0000) BY GNSS OBSERVATIONS.

NOTE: THE EXISTING R/W WIDTH AND LOCATION
 WERE DETERMINED USING:
 1) STATE OF OHIO RIGHT OF WAY PLAN POR-224-6.22 (1956)
 2) PORTAGE COUNTY SURVEYS P-07601, P-04575, P-03207,
 P-01778, P-18738, P-18191, P-15520, P-12436, P-10494, P-10057,
 P-10001, P-09618, P-08399, P-08247

BEGIN ACQUISITION
 STA. 166+55.76

166+55.76 U.S. ROUTE 224 =
 69+24.36 NEW MILFORD ROAD

MATCH LINE STA. 71+50.00

71+17.88
 0.00 RT

STA 71+17.88
 OFF 50.00' RT

STA 169+46.12
 OFF 100.00' LT

STA 168+00.00
 OFF 100.00' LT

PT 169+46.12

1" IP FD IN
 MON. BOX

MATCH LINE STA. 170+00.00

RESIDENTIAL
 1
 BENNY E. WILLIAMS
 KAREN ANN WILLIAMS
 4900 WATERLOO ROAD
 ATWATER OH 44201
 28-052-00-00-019-000
 D.V. 968, PG. 966
 (T.O.D. AFF. 202023113)
 SUBJECT TO OIL & GAS LEASE
 & PIPELINE EASEMENT 201917154
 - PERRY PETROLEUM LLC.
 VOL. 771, PG 540 - EAST OHIO GAS

PORTAGE COUNTY COURT OF COMMON PLEAS
 JOURNAL ENTRY NO. 25933 232-LA

U.S. ROUTE 224
 (AKRON CANFIELD ROAD)

CURVE "A"
 Δ = 02°25'16"
 R = 6871.26'
 L = 290.36'
 C = 290.34'
 S73°33'49"W

CURVE "B"
 Δ = 01°13'06"
 R = 6771.26'
 L = 144.00'
 C = 143.99'
 N72°57'44"E

updated page

* DENOTES RIGHT OF WAY ENCROACHMENT

DESIGNER	JPS
REVIEWER	FDS 08-09-21
PROJECT ID	107920
SUBSET	3
TOTAL	5
DATE COMPLETED	

RIGHT OF WAY PLAN

DESIGN AGENCY



DESIGNER
 JPS

REVIEWER
 FDS 08-09-21

PROJECT ID
 107920

SUBSET
 3

TOTAL
 5

SHEET
 104

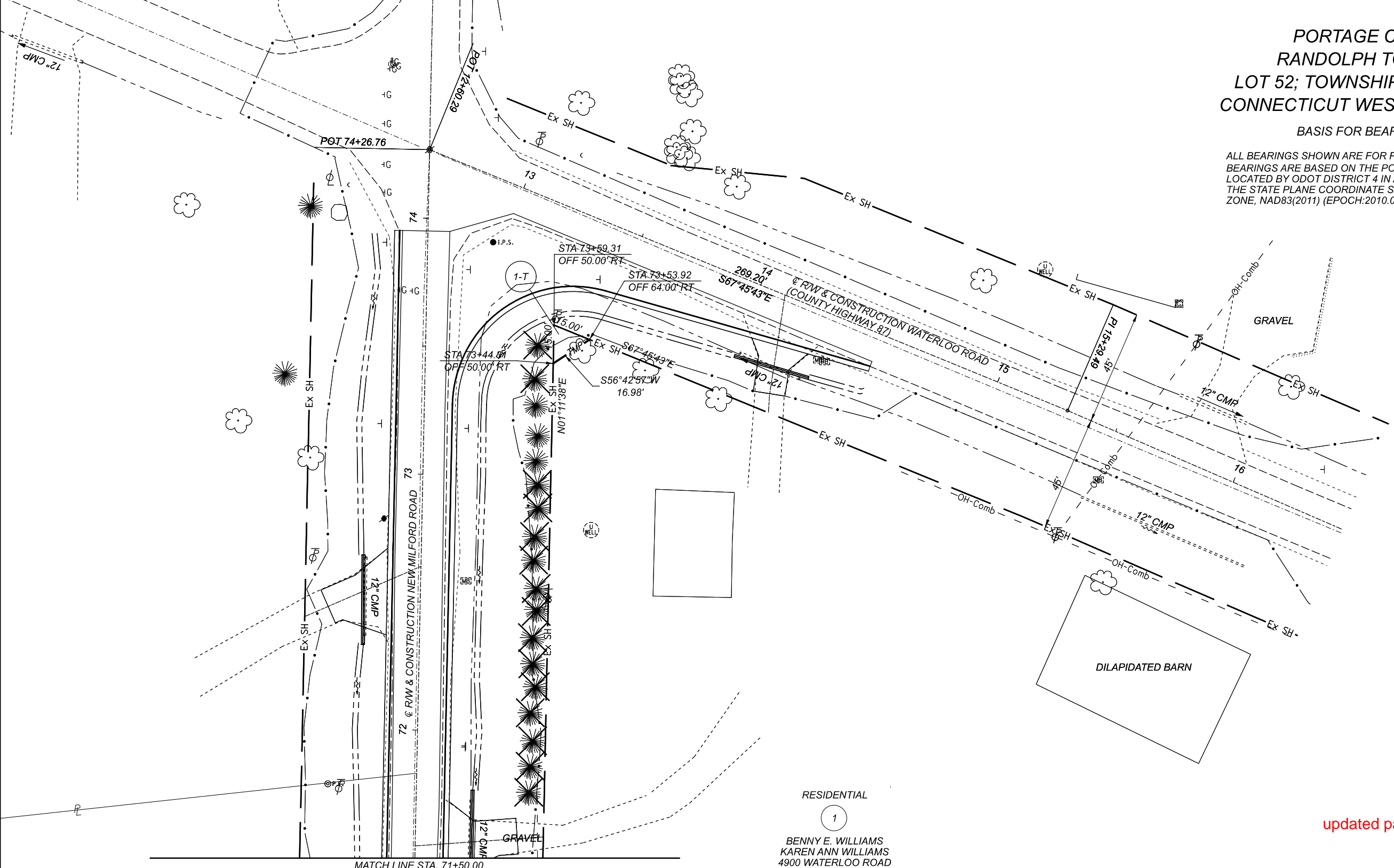
TOTAL
 106

PORTAGE COUNTY
 RANDOLPH TOWNSHIP
 LOT 52; TOWNSHIP 1, RANGE VIII
 CONNECTICUT WESTERN RESERVE



BASIS FOR BEARINGS:

ALL BEARINGS SHOWN ARE FOR PROJECT USE ONLY.
 BEARINGS ARE BASED ON THE POSITIONS OF MONUMENTS
 LOCATED BY ODOT DISTRICT 4 IN APRIL 2018 RELATIVE TO
 THE STATE PLANE COORDINATE SYSTEM, OHIO NORTH (3401)
 ZONE, NAD83(2011) (EPOCH:2010.0000) BY GNSS OBSERVATIONS.



MATCH LINE STA. 71+50.00

RESIDENTIAL
 1
 BENNY E. WILLIAMS
 KAREN ANN WILLIAMS
 4900 WATERLOO ROAD
 ATWATER OH 44201
 28-052-00-00-019-000
 D.V. 968, PG. 966
 (T.O.D. AFF. 202023113)
 SUBJECT TO OIL & GAS LEASE
 & PIPELINE EASEMENT 201917154
 - PERRY PETROLEUM LLC.
 VOL. 771, PG 540 - EAST OHIO GAS

updated page

NOTE: THE EXISTING R/W WIDTH AND LOCATION
 WERE DETERMINED USING:
 1) STATE OF OHIO RIGHT OF WAY PLAN POR-224-6.22 (1956)
 2) PORTAGE COUNTY SURVEYS P-07601, P-04575, P-03207,
 P-01778, P-18738, P-18191, P-15520, P-12436, P-10494, P-10057,
 P-10001, P-09618, P-08399, P-08247

* DENOTES RIGHT OF WAY ENCROACHMENT

REV. BY	DATE	DESCRIPTION
TWW	2-01-22	ADD PROP DRIVEWAYS; SHOW TREES AS TAKE
TWW	11-09-21	ADD PARCEL 1-T
DATE COMPLETED		

DESIGN AGENCY	TF ASSOCIATES
DESIGNER	JPS
REVIEWER	FDS
PROJECT ID	107920
SUBSET	4
TOTAL	5
SHEET	105
TOTAL	106

POR-224-9.09

MODEL: Sheet2 PAPER SIZE: 17x11 (in.) DATE: 2/1/2022 TIME: 11:16:38 AM USER: tward1
 pwc:\ohio\dot-pw-bentley.com\shh\dot-pw-02\Documents\01 Active Projects\District 04\Portage\107920\400-Engineering\RW\Sheets\107920_RD001.dgn

RIGHT OF WAY PLAN

