


SHEET NUM.												PART.		ITEM	ITEM EXT	GRAND TOTAL	UNIT	DESCRIPTION	SEE SHEET NO.
P.4	P.5	P.6	P.7	P.9	P.16	P.17	P.18	P.28-P.48	P.51	P.52	P.53	P.54	01/SAF/21						
ROADWAY																			
													LS		201	11000	LS	CLEARING AND GRUBBING	
							1,357		250				1,607		202	23000	1,607	SY	PAVEMENT REMOVED
							2						2		202	23500	2	SY	WEARING COURSE REMOVED
					407								407		202	32600	407	FT	GUTTER REMOVED
					244									244	202	35100	244	FT	PIPE REMOVED, 24" AND UNDER
					2									2	202	58100	2	EACH	CATCH BASIN REMOVED
	1												1		202	98100	1	EACH	REMOVAL MISC.: INSPECTION WELL
	5												5		202	98200	5	FT	REMOVAL MISC.: CONDUIT
								2,839					2,839		203	10000	2,839	CY	EXCAVATION
								681					681		203	20000	681	CY	EMBANKMENT
	50												50		203	20001	50	CY	EMBANKMENT, AS PER PLAN
	45												45		203	35110	45	CY	GRANULAR MATERIAL, TYPE B
	45						3,387		197				3,584		204	10000	3,584	SY	SUBGRADE COMPACTION
													45		204	13000	45	CY	EXCAVATION OF SUBGRADE
							2		1				3		204	45000	3	HOUR	PROOF ROLLING
	134												134		204	50000	134	SY	GEOTEXTILE FABRIC
		54											54		209	60200	54	STA	LINEAR GRADING
							46						46		209	72000	46	STA	PREPARING SUBGRADE FOR SHOULDER PAVING
	1												1		623	39500	1	EACH	MONUMENT ASSEMBLY ADJUSTED TO GRADE
							1,276						1,276		SPECIAL	69098300	1,276	SY	SQUARE YARD PAVEMENT OVERLAY FABRIC COMPOSITE
LS													LS		SPECIAL	69098400	LS		SURVEY CONTROL VERIFICATION
EROSION CONTROL																			
						4							4		601	21050	4	SY	TIED CONCRETE BLOCK MAT WITH TYPE 1 UNDERLAYMENT
	5												5		601	32200	5	CY	ROCK CHANNEL PROTECTION, TYPE C WITH FILTER
					1									1	601	32204	1	CY	ROCK CHANNEL PROTECTION, TYPE C WITH GEOTEXTILE FABRIC
	2												2		659	00100	2	EACH	SOIL ANALYSIS TEST
	1,101												1,101		659	00300	1,101	CY	TOPSOIL
	9,912	1,502											11,414		659	10000	11,414	SY	SEEDING AND MULCHING
	496												496		659	14000	496	SY	REPAIR SEEDING AND MULCHING
	1.34	0.2											1.54		659	20000	1.54	TON	COMMERCIAL FERTILIZER
	2.05	0.31											2.36		659	31000	2.36	ACRE	LIME
	27	8.1											35.1		659	35000	35.1	MGAL	WATER
					232								232		670	00700	232	SY	DITCH EROSION PROTECTION
													LS		832	15000	LS		STORM WATER POLLUTION PREVENTION PLAN
													LS		832	15002	LS		STORM WATER POLLUTION PREVENTION INSPECTIONS
													LS		832	15010	LS		STORM WATER POLLUTION PREVENTION INSPECTION SOFTWARE
													26,000		832	30000	26,000	EACH	EROSION CONTROL
DRAINAGE																			
	20												2	1	602	20000	3	CY	CONCRETE MASONRY
													20		605	13300	20	FT	6" UNCLASSIFIED PIPE UNDERDRAINS
							98						98		605	13410	98	FT	6" UNCLASSIFIED PIPE UNDERDRAINS WITH GEOTEXTILE FABRIC
							2,127						2,127		605	14020	2,127	FT	6" BASE PIPE UNDERDRAINS WITH GEOTEXTILE FABRIC
							47						47		611	00510	47	FT	6" CONDUIT, TYPE F FOR UNDERDRAIN OUTLETS
	20												20		611	00900	20	FT	6" CONDUIT, TYPE B
	20												20		611	01400	20	FT	6" CONDUIT, TYPE E
	40												40		611	01500	40	FT	6" CONDUIT, TYPE F
					134									134	611	04400	134	FT	12" CONDUIT, TYPE B
					39								39		611	04400	39	FT	12" CONDUIT, TYPE B, 706.02
					43								43		611	04900	43	FT	12" CONDUIT, TYPE D
					91								91		611	04900	91	FT	12" CONDUIT, TYPE D, 706.02
					5								5		611	05900	5	FT	15" CONDUIT, TYPE B, 706.02
					5								5		611	05900	5	FT	15" CONDUIT, TYPE B, 707.01
	5												5		611	97400	5	FT	CONDUIT, MISC.: TYPE B FOR DRAINAGE DISCHARGE CONTINUANCE
	5												5		611	97400	5	FT	CONDUIT, MISC.: TYPE C FOR DRAINAGE DISCHARGE CONTINUANCE
	5												5		611	97400	5	FT	CONDUIT, MISC.: TYPE E FOR DRAINAGE DISCHARGE CONTINUANCE
	5												5		611	97400	5	FT	CONDUIT, MISC.: TYPE F FOR DRAINAGE DISCHARGE CONTINUANCE
					3								2	1	611	98470	3	EACH	CATCH BASIN, NO. 2-2B
						2							2		611	99710	2	EACH	PRECAST REINFORCED CONCRETE OUTLET
	1												1		611	99720	1	EACH	INSPECTION WELL

GENERAL SUMMARY

DESIGN AGENCY

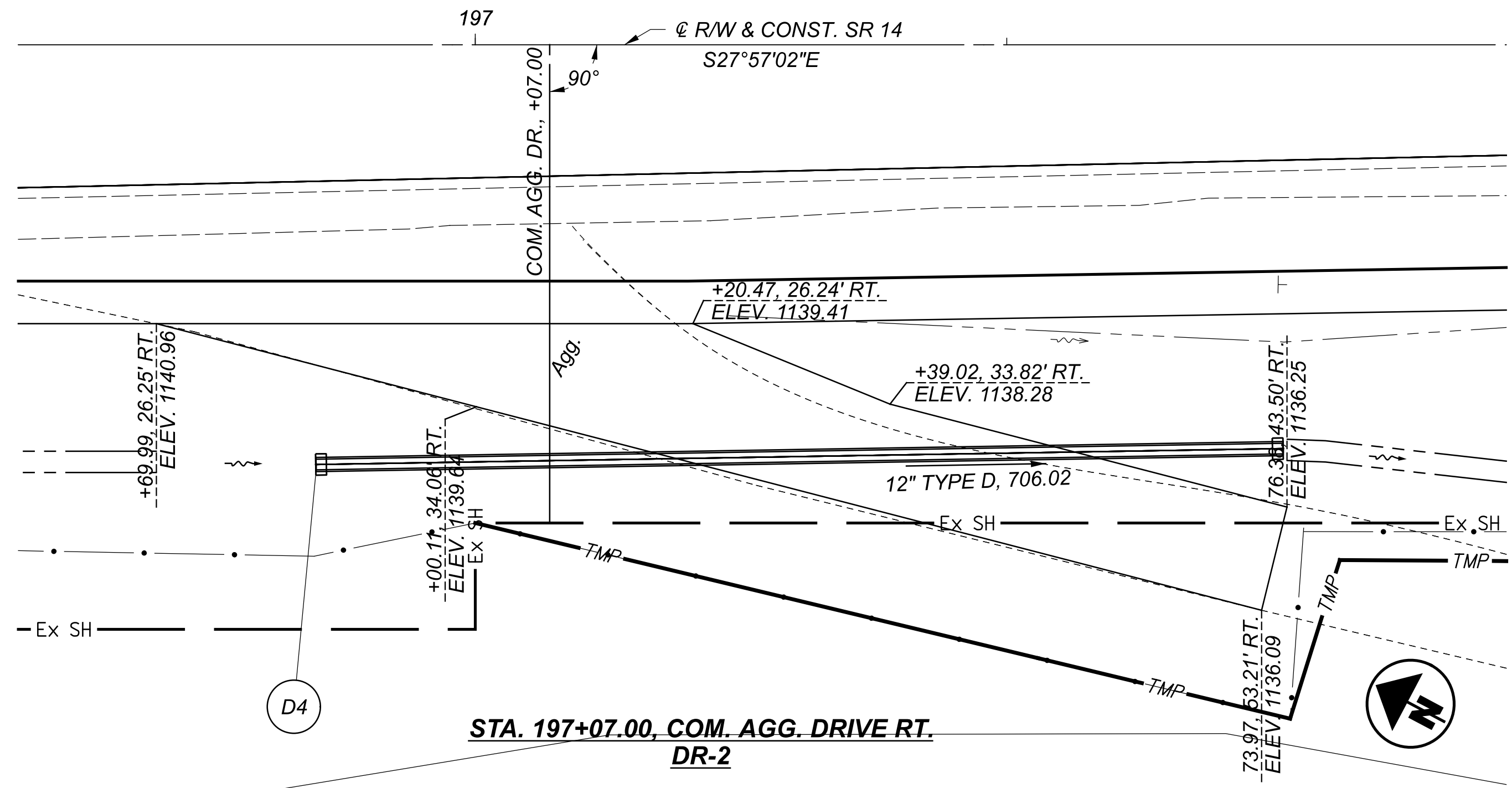


DESIGNER
RCB

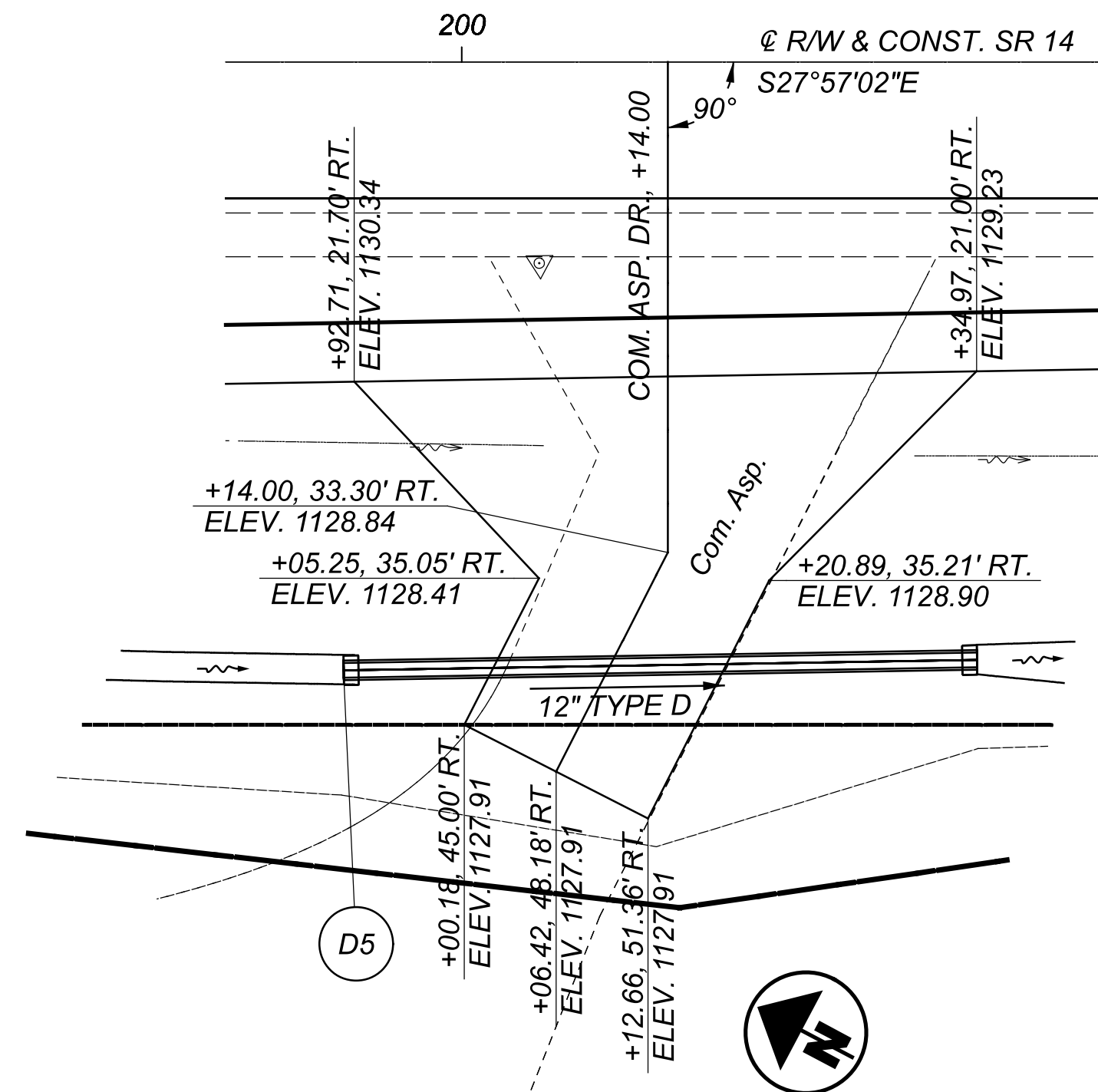
REVIEWER
MJA 09-27-22

PROJECT ID
113733

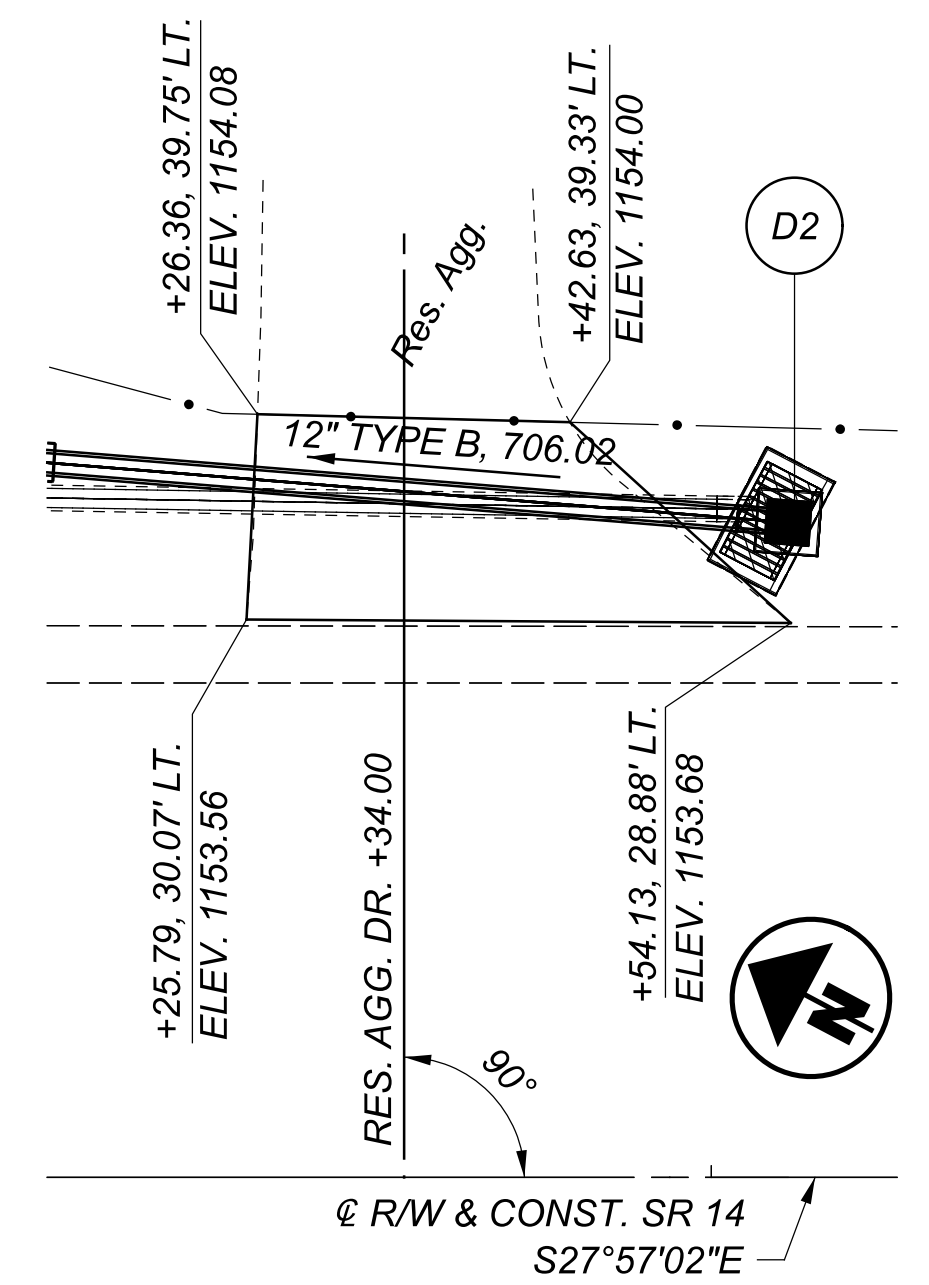
SHEET TOTAL
P.14 63



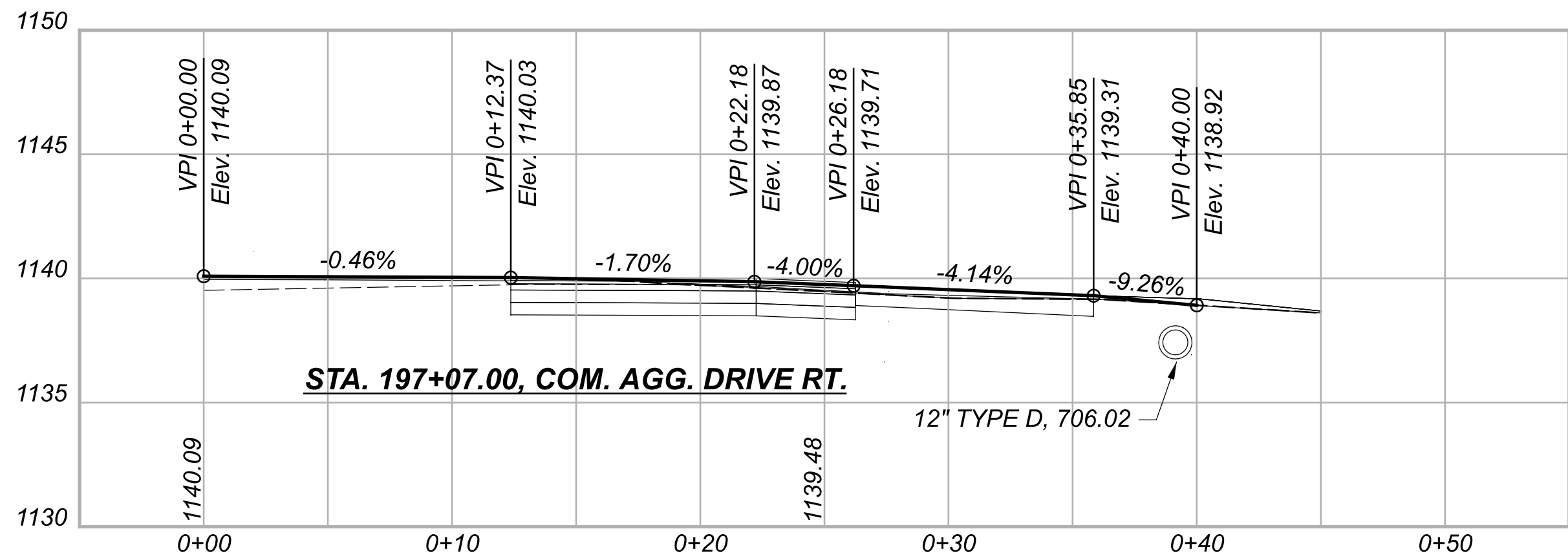
STA. 197+07.00, COM. AGG. DRIVE RT. DR-2



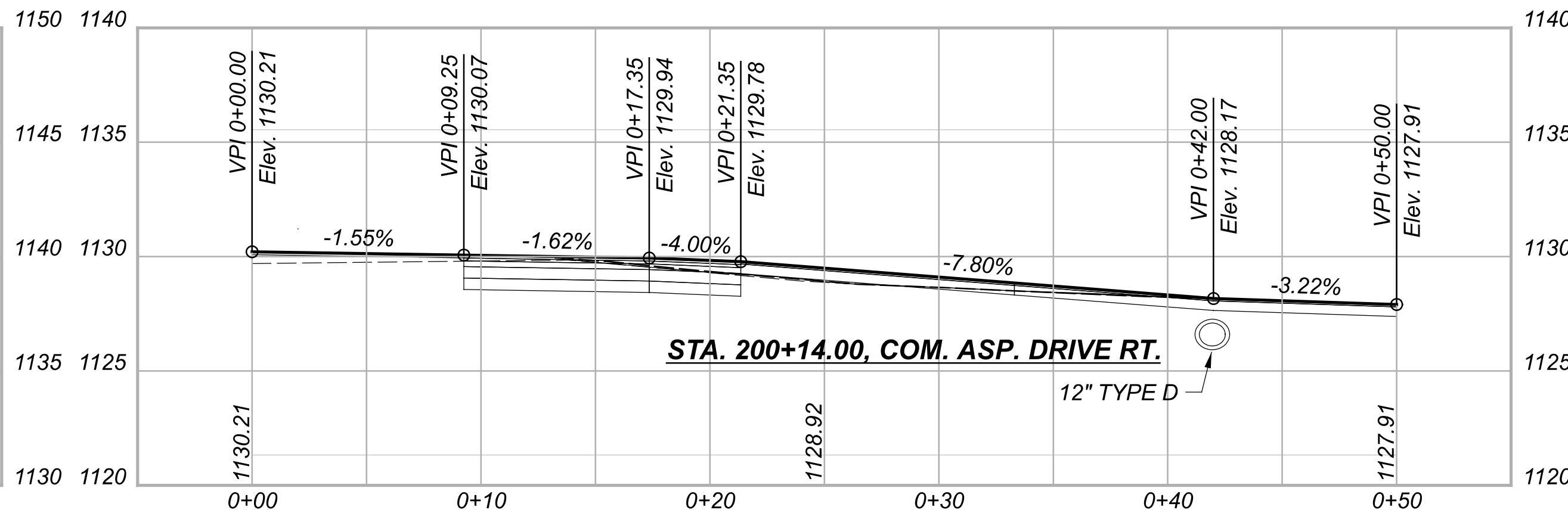
STA. 200+14.00, COM. ASP. DRIVE RT. DR-3



STA. 186+34.00, RESIDENTIAL AGG. DRIVE LT. DR-1



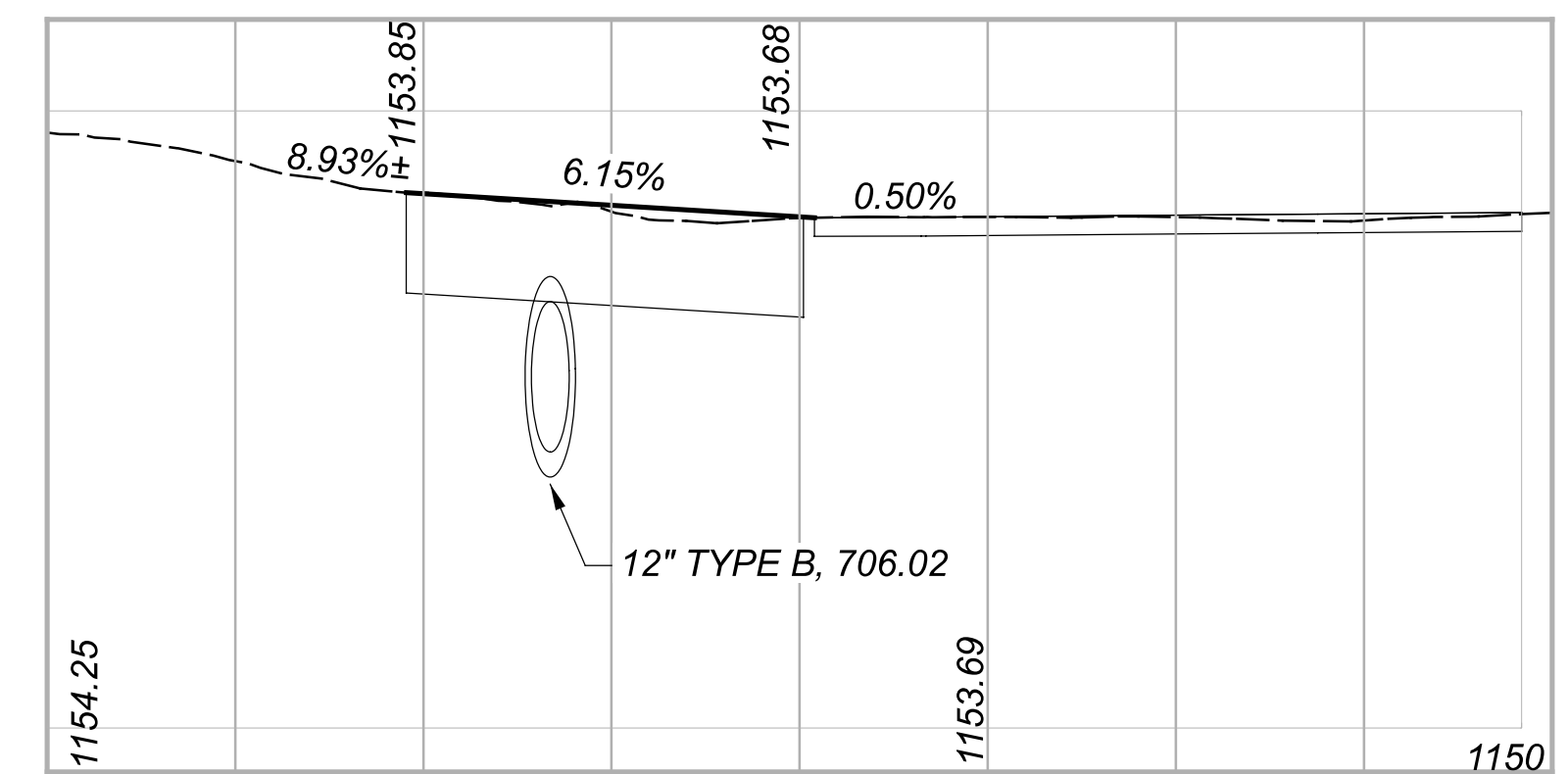
STA. 197+07.00, COM. AGG. DRIVE RT.



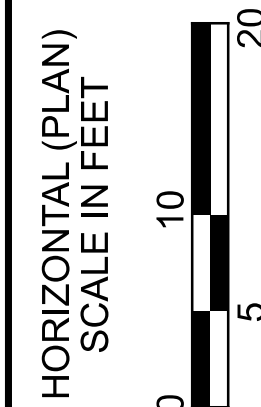
STA. 200+14.00, COM. ASP. DRIVE RT.

COMMERCIAL DRIVEWAYS
PROPOSED ASPHALT DRIVE:
 441, 1 1/4" ASPHALT CONCRETE SURFACE COURSE, TYPE 1, (449), (DRIVEWAYS), AS PER PLAN, PG70-22M
 407, NON-TRACKING TACK COAT 301, 5" ASPHALT CONCRETE BASE, PG64-22, (449)
PROPOSED AGGREGATE DRIVE:
 304, 10" AGGREGATE BASE
RESIDENTIAL DRIVEWAYS
PROPOSED AGGREGATE DRIVE:
 304, 8" AGGREGATE BASE
 SEE SCD BP-4.1 FOR ADDITIONAL INFORMATION.

LOCATION	SIDE	DISTANCE (AT DRIVE C/L EDGE OF SHLD. TO END PROP. DRIVE)		RADIUS	CADD GENERATED AREA (A)	PAVEMENT REMOVED	SUBGRADE COMPACTION	PROOF ROLLING	ASPHALT CONCRETE BASE, PG64-22, (449), 5"	AGGREGATE BASE, 10"	AGGREGATE BASE, 8"	NON-TRACKING TACK COAT @ 0.06 GAL/SY	ASPHALT CONCRETE SURFACE COURSE, TYPE 1, (449), (DRIVEWAYS), AS PER PLAN, PG64-22, 1.25"	FULL DEPTH PAVEMENT SAWING
		FT	FT											
DR-2 @ 197+07 COM. AGG. DRIVE	RT	9.67	10.00		102.91	151.98	102.91	0.05						
DR-3 @ 200+14 COM. ASP. DRIVE	RT	12.16	14.00		67.07	71.59	67.07	0.03	9.31	28.59		4.02	2.33	14.00
DR-1 @ 186+34 RES. AGG. DRIVE	LT	10.55	16.00		26.03	26.03	26.03	0.01			5.79			
SUBTOTALS						249.60	196.01	0.10	9.31	28.59	5.79	4.02	2.33	14.00
TOTALS CARRIED TO GENERAL SUMMARY						250	197	1	10	29	6	5	3	14



STA. 186+34.00, RES. AGG. DRIVE LT.



DRIVE DETAILS
 SR 14



DESIGN AGENCY
 DESIGNER: RCB
 REVIEWER: MJA 09-27-22
 PROJECT ID: 113733
 SHEET: P.51 TOTAL: 63