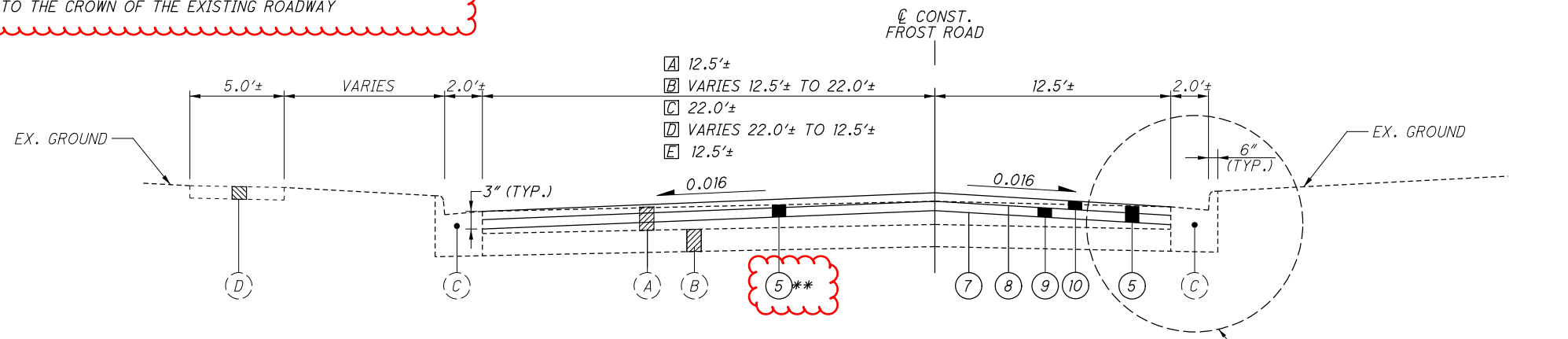
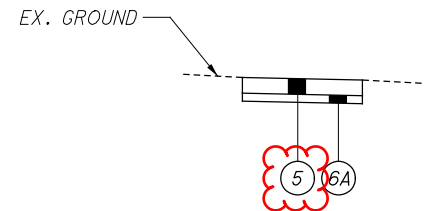


** VARIES FROM 3" TO 0" FROM THE BOTTOM OF THE GUTTER OUT TO THE CENTER OF THE PAVEMENT IN ORDER TO PROPERLY RECONSTRUCT THE CROSS SLOPE TO THE CROWN OF THE EXISTING ROADWAY

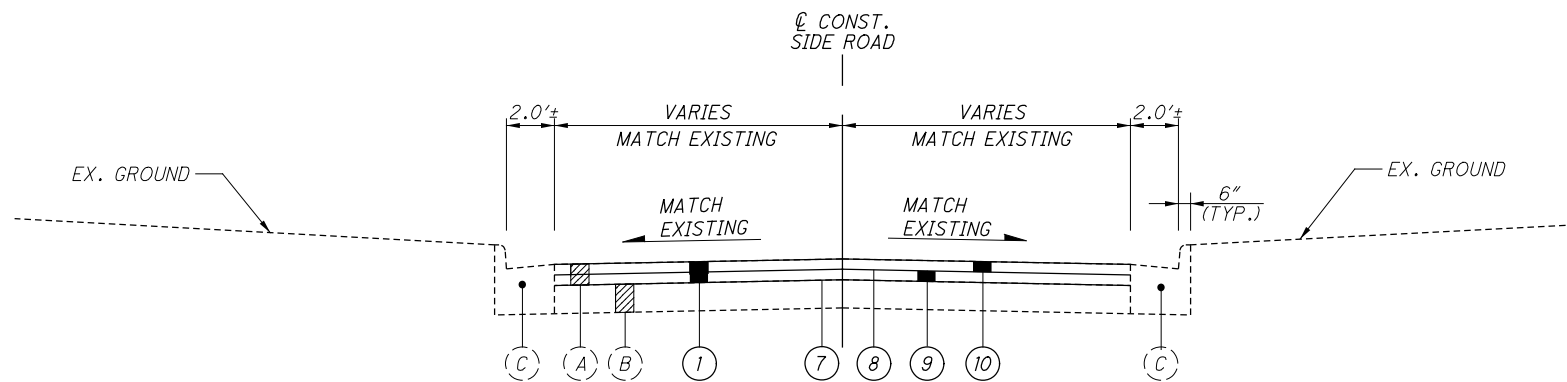


NORMAL SECTION - FROST ROAD

- Ⓐ 12.5'±
 - Ⓑ VARIES 12.5'± TO 22.0'±
 - Ⓒ 22.0'±
 - Ⓓ VARIES 22.0'± TO 12.5'±
 - Ⓔ 12.5'±
- Ⓐ STA. 24+17.21 TO STA. 27+43.02
 Ⓑ STA. 27+43.02 TO STA. 29+74.87
 Ⓒ STA. 29+74.87 TO STA. 33+06.57
 Ⓓ STA. 33+06.57 TO STA. 35+01.53
 Ⓔ STA. 35+01.53 TO STA. 93+00.00

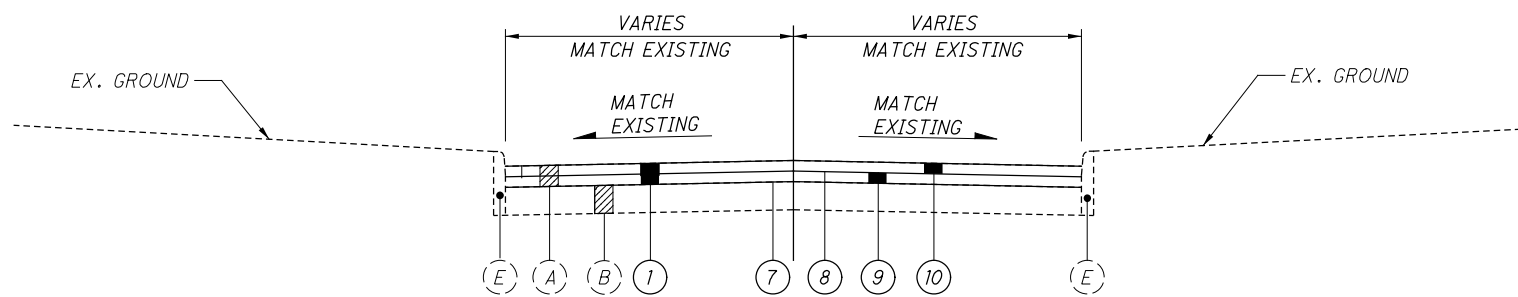


SIDEWALK DETAIL



NORMAL SECTION - SIDE ROAD

- SECTION APPLIES:
- PHILIP PKWY.
 - DAVID DR.
 - GREENTREE PKWY.
 - RODNEY ST.
 - RAYMOND ST.
 - N. DELMONTE BLVD.
 - MELDON DR.
 - SUNNY LN.



NORMAL SECTION - SIDE ROAD

- SECTION APPLIES:
- GREENHAVEN ST.
 - S DELMONTE BLVD.
 - POSTON RD.

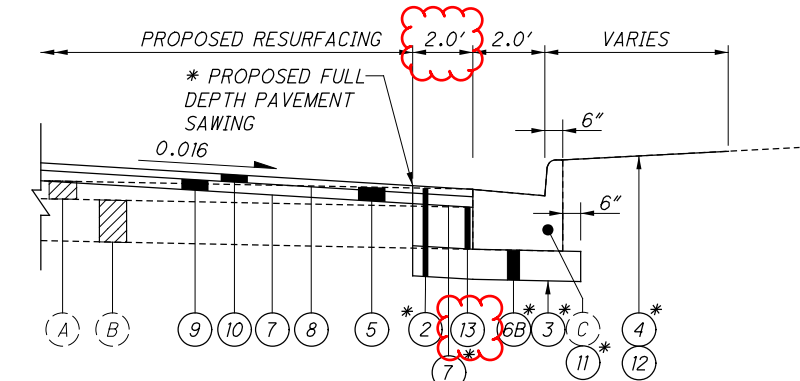
LEGEND

- ① ITEM 254 - PAVEMENT PLANING (T=VARIES)
 - ② ITEM 203 - EXCAVATION
 - ③ ITEM 204 - SUBGRADE COMPACTION
 - ④ ITEM 209 - LINEAR GRADING
 - ⑤ ITEM 608 - 4" CONCRETE WALK
 - ⑥A ITEM 304 - 2" AGGREGATE BASE
 - ⑥B ITEM 304 - 6" AGGREGATE BASE
 - ⑦ ITEM 407 - TACK COAT, AS PER PLAN @ 0.050 GAL/SQ YD
 - ⑧ ITEM 407 - TACK COAT FOR INTERMEDIATE COURSE, AS PER PLAN @ 0.050 GAL/SQ YD
 - ⑨ ITEM 441 - 1 1/2" ASPHALT CONCRETE INTERMEDIATE COURSE, TYPE 2, (448)
 - ⑩ ITEM 441 - 1 1/2" ASPHALT CONCRETE SURFACE COURSE, TYPE 1, (448), PG64-22, AS PER PLAN
 - ⑪ ITEM 609 - COMBINATION CURB AND GUTTER, TYPE 2, AS PER PLAN
 - ⑫ ITEM 659 - SEEDING AND MULCHING, AS PER PLAN
 - ⑬ ITEM 301 - 8" ASPHALT CONCRETE BASE, PG64-22
- Ⓐ EXISTING ASPHALT PAVEMENT BUILD UP (THICKNESS VARIES)
 Ⓑ EXISTING AGGREGATE BASE
 Ⓒ EXISTING CONCRETE CURB AND GUTTER
 Ⓓ EXISTING CONCRETE WALK
 Ⓔ EXISTING CONCRETE CURB

ITEM REMOVED:
ITEM 202 - PAVEMENT REMOVED

ABBREVIATIONS

- EX. - EXISTING
- TYP. - TYPICAL
- ℄ - CENTER LINE
- CONST. - CONSTRUCTION



* INCLUDED WITH PAYMENT FOR ITEM 609 - COMBINATION CURB AND GUTTER, TYPE 2, AS PER PLAN
CURB AND GUTTER REPLACEMENT SECTION
NOT TO SCALE

0:\2013\20130008\06\ROADWAY\1\SHEETS\20130008_066V001.DGN
 3/25/2022
 2:59:42 PM
 000TV81STD_USER

TYPICAL SECTIONS

POR-CR 197-01.03

GENERAL NOTES

THE CONSTRUCTION ON THIS PROJECT SHALL BE GOVERNED BY THE STATE OF OHIO DEPARTMENT OF TRANSPORTATION (ODOT) CONSTRUCTION AND MATERIAL SPECIFICATIONS (2019), SUPPLEMENTED BY CONTRACT SPECIFICATION DOCUMENTS WHERE APPLICABLE.

DETAILS AND DIMENSIONS SHOWN ON THESE PLANS CONCERNING THE EXISTING FACILITIES HAVE BEEN OBTAINED FROM DILIGENT FIELD DATA COLLECTION OF THE EXISTING FACILITIES AND DO NOT NECESSARILY REPRESENT AS-BUILT CONDITIONS. THE CONTRACT SHALL BE BASED ON A RECOGNITION OF THE UNCERTAINTIES DESCRIBED ABOVE AND UPON AN EXAMINATION OF THE WORKSITE BY THE CONTRACTOR. ALL PROJECT WORK SHALL BE BASED UPON THE ACTUAL DETAILS

AND DIMENSIONS PRESENTED ON THESE PLANS AND SPECIFICATIONS. THE CONTRACTOR IS RESPONSIBLE TO COMPLY WITH ALL APPLICABLE SECTIONS OF OSHA STANDARD 29 CFR 1910.146 AND OSHA STANDARD 29 CFR 1926. THE COST OF THIS WORK SHALL BE INCLUDED IN THE ITEM THAT REQUIRED THE WORK.

UTILITIES

THE CONTRACTOR SHALL USE THE FOLLOWING PROCEDURE AT THE EACH LOCATION WHERE WORK IS PERFORMED, IN ACCORDANCE WITH SECTIONS 105.07 AND 107.16 IN THE CONSTRUCTION AND MATERIALS SPECIFICATIONS:

THE CONTRACTOR SHALL NOTIFY THE PROJECT ENGINEER, THE OHIO UTILITIES PROTECTION SERVICE (OUPS), THE OHIO & GAS PROCEDURES UNDERGROUND PROTECTION SERVICE (OGPUPS),

THE OHIO DEPARTMENT OF TRANSPORTATION DISTRICT 4 HEADQUARTERS AND ALL NON REGISTERED UTILITY OWNERS AT LEAST TWO (2) WORKING DAYS PRIOR TO COMMENCING CONSTRUCTION OPERATIONS IN ALL AREAS.

OUPS 1-800-362-2764
(CONTACT LIMITED BASIS PARTICIPANTS DIRECTLY)
OGPUPS 1-800-925-0988
ODOT 330-786-3145 KEN GREENE

THE LOCATION OF THE UNDERGROUND UTILITIES SHOWN ON THE PLANS ARE AS OBTAINED FROM THE OWNERS AS REQUIRED BY SECTION 153.64 O.R.C.

LISTED BELOW ARE ALL UTILITIES LOCATED WITHIN THE PROJECT CONSTRUCTION LIMITS TOGETHER WITH THEIR RESPECTIVE OWNERS:

KNOX ENERGY 11872 WORTHINGTON RD NW PATASKALA, OH 43062 (740) 927-6731 ATTN: ENGINEERING DEPT.
DOMINION EAST OHIO 1201 EAST 55TH STREET CLEVELAND, OH 44103 (216) 736-6675 ATTN: ENGINEERING DEPT.

AT&T 13630 LORAIN AVENUE 4TH FLOOR CLEVELAND, OH 44111 (216) 476-6142 ATTN: ENGINEERING DEPT.
OHIO EDISON 1910 W MARKET STREET BLDG 1 AKRON, OH 44313 (330) 830-7092 ATTN: MICHAEL JANSON

ODOT - DISTRICT 4 2088 S. ARLINGTON ROAD AKRON, OH 44313 (330) 786-3145 ATTN: KEN GREENE
CITY OF STREETSBORO 9184 STATE ROUTE 43 STREETSBORO, OH 44241 (330) 626-4942 EXT. 137 ATTN: BRUCE TERRELL

PORTAGE COUNTY WATER RESOURCES 449 SOUTH MERIDIAN STREET P.O. BOX 1217 RAVENNA, OH 44266 (330) 297-3670 ATTN: JOHN EVANS
TIME WARNER CABLE 14300 SOUTH INDUSTRIAL PARKWAY MAPLE HEIGHTS, OH 44137 (216) 392-7935 ATTN: ENGINEERING DEPT.

UTILITIES (CONT.)

WINDSTREAM WESTERN RESERVE 245 N MAIN STREET HUDSON, OH 44236 (330) 650-8000 ATTN: ENGINEERING DEPT.

PROFILE AND ALIGNMENT

PLACE THE PROPOSED PAVEMENT TO FOLLOW THE ALIGNMENT AND PROFILE OF THE EXISTING PAVEMENT. PLACE THE PROPOSED ASPHALT CONCRETE OVERLAY AS SHOWN ON THE TYPICAL SECTIONS.

ITEM 202 - PIPE REMOVED, 24" AND UNDER, AS PER PLAN

ITEM 202 - PIPE REMOVED, 24" AND UNDER, AS PER PLAN SHALL ALSO INCLUDE THE REMOVAL OF ALL APPURTENANCES (I.E. TRENCH DRAINS, ETC.) CONNECTED TO THE PIPE NOT OTHERWISE CALLED OUT FOR REMOVAL. IN ADDITION, THIS ITEM SHALL ALSO INCLUDE ALL NECESSARY PAVEMENT SAW CUTTING, PAVEMENT REMOVAL, COMPACTION, AND PAVEMENT RESTORATION TO MATCH EXISTING PAVEMENT.

ITEM 659 - SEEDING AND MULCHING, AS PER PLAN

IN ADDITION TO THE REQUIREMENTS OF ITEM 659 - SEEDING AND MULCHING, THE CONTRACTOR SHALL ALSO PROVIDE AND AND INSTALL COMMERCIAL FERTILIZER, LIME, WATER AND

TOPSOIL IN CONFORMANCE WITH ODOT CMS 659 SPECIFICATIONS. THE FOLLOWING ESTIMATED QUANTITY HAS BEEN CARRIED TO THE GENERAL SUMMARY FOR USE AS DIRECTED BY THE ENGINEER FOR THE ABOVE STATED WORK:

ITEM 659 - SEEDING AND MULCHING, AS PER PLAN 1000 SQ YD

PAYMENT FOR THE ABOVE STATED SHALL INCLUDE ALL LABOR, MATERIALS, AND EQUIPMENT NECESSARY TO PERFORM THE ABOVE STATED WORK AND SHALL BE INCLUDED IN THE UNIT PRICE BID FOR ITEM 659 - SEEDING AND MULCHING, AS PER PLAN.

INTERSECTIONS

INTERSECTIONS WILL BE RESURFACED 25 FT. BEYOND THE EDGE LINE, UNLESS OTHERWISE DIRECTED BY THE ENGINEER OR INDICATED IN THE PLAN. INTERSECTIONS SHALL BE PAVED AFTER COMPLETION OF THE SURFACE COURSE. A BUTT JOINT, AS PER STANDARD CONSTRUCTION DRAWING BP-3.1, SHALL BE USED TO PROVIDE A SMOOTH TRANSITION TO THE EXISTING PAVEMENT. USE THE SAME ASPHALT CONCRETE AS THE MAINLINE PAVEMENT UNLESS SHOWN OTHERWISE ON THE ASPHALT CONCRETE CALCULATIONS SHEET. ANY GRADING OR PRIME NECESSARY TO ACCOMPLISH THIS WORK SHALL BE INCLUDED IN THE COST OF THE PERTINENT BID ITEM.

BEST MANAGEMENT PRACTICES - SOIL EROSION AND AND SEDIMENTATION CONTROL

WATER COLUMN AND SEDIMENTATION IMPACTS SHALL BE KEPT TO A MINIMUM THROUGH THE USE OF BEST MANAGEMENT PRACTICES FOR SOIL EROSION AND SEDIMENTATION CONTROL. ALL SOIL EROSION AND SEDIMENT CONTROL MEASURES SHALL BE IN PLACE PRIOR TO ANY EXCAVATION. GRADING OR FILLING OPERATIONS AND INSTALLATION OF PROPOSED STRUCTURES OR UTILITIES THEY SHALL REMAIN IN PLACE UNTIL CONSTRUCTION IS COMPLETED AND THE AREA IS STABILIZED AS ACCEPTED BY THE ENGINEER. THESE SHALL COMPLY WITH ODOT'S HANDBOOK FOR SEDIMENT AND EROSION CONTROL. WHICH MAY BE FOUND AT: HTTP://WWW.DOT.STATE.OH.US/DRRC/.

REVIEW OF DRAINAGE FACILITIES

BEFORE ANY WORK IS STARTED ON THE PROJECT AND AGAIN BEFORE FINAL ACCEPTANCE BY THE CITY, REPRESENTATIVES OF THE CITY, AND THE CONTRACTOR, SHALL MAKE AN INSPECTION OF ALL EXISTING SEWERS WHICH ARE TO REMAIN IN SERVICE AND WHICH MAY BE AFFECTED BY THE WORK. THE CONDITION OF THE EXISTING CONDUITS AND THEIR APPURTENANCE SHALL BE DETERMINED BY FIELD OBSERVATIONS. RECORDS OF THE INSPECTION SHALL BE KEPT IN WRITING BY THE CITY.

ALL NEW CONDUITS, INLETS, CATCH BASINS, AND MANHOLES CONSTRUCTED AS A PART OF THE PROJECT SHALL BE FREE OF ALL FOREIGN MATTER AND IN A CLEAN CONDITION BEFORE THE PROJECT WILL BE ACCEPTED BY THE CITY.

ALL EXISTING SEWERS INSPECTED INITIALLY BY THE ABOVE MENTIONED PARTIES SHALL BE MAINTAINED AND LEFT IN A CONDITION REASONABLY COMPARABLE TO THAT DETERMINED BY THE ORIGINAL INSPECTION. ANY CHANGE IN THE CONDITION RESULTING FROM THE CONTRACTOR'S OPERATIONS SHALL BE CORRECTED BY THE CONTRACTOR TO THE SATISFACTION OF THE ENGINEER.

PAYMENT FOR ALL OPERATIONS DESCRIBED ABOVE SHALL BE CONSIDERED INCIDENTAL TO THE CONTRACT PRICE FOR THE PERTINENT 611 CONDUIT ITEMS.

CROSSINGS AND CONNECTIONS TO EXISTING PIPES AND UTILITIES

WHERE PLANS PROVIDE FOR A PROPOSED CONDUIT TO BE CONNECTED TO, OR CROSS OVER OR UNDER AN EXISTING SEWER OR UNDERGROUND UTILITY, THE CONTRACTOR SHALL LOCATE THE EXISTING PIPES OR UTILITIES BOTH AS TO LINE AND GRADE BEFORE STARTING TO LAY THE PROPOSED CONDUIT.

IF IT IS DETERMINED THAT THE ELEVATION OF THE EXISTING CONDUIT, OR EXISTING APPURTENANCE TO BE CONNECTED, DIFFERS FROM THE PLAN ELEVATION OR RESULTS IN A CHANGE IN THE PLAN CONDUIT SLOPE, THE ENGINEER SHALL BE NOTIFIED BEFORE STARTING CONSTRUCTION OF ANY PORTION OF THE PROPOSED CONDUIT WHICH WILL BE AFFECTED BY THE VARIANCE IN THE EXISTING ELEVATIONS.

IF IT IS DETERMINED THAT THE PROPOSED CONDUIT WILL INTERSECT AN EXISTING SEWER OR UNDERGROUND UTILITY IF CONSTRUCTED AS SHOWN ON THE PLAN, THE ENGINEER SHALL BE NOTIFIED BEFORE STARTING CONSTRUCTION OF ANY PORTION OF THE PROPOSED CONDUIT WHICH WOULD BE AFFECTED BY THE INTERFERENCE WITH AN PAYMENT FOR ALL THE OPERATIONS DESCRIBED ABOVE SHALL BE INCLUDED IN THE CONTRACT PRICE FOR THE PERTINENT 611 CONDUIT ITEM.

ITEM 203 - EXCAVATION (FOR PAVEMENT REPAIR)

THIS ITEM OF WORK SHALL CONSIST OF REMOVING AND DISPOSING OF ALL UNSUITABLE MATERIAL BY EXCAVATING THE EXISTING SUBGRADE AND SUBBASE TO AN AVERAGE DEPTH OF 6 INCHES OR AS DIRECTED BY THE ENGINEER. EXACT LIMITS OF REMOVAL SHALL BE DETERMINED BY THE ENGINEER. ALL EQUIPMENT, LABOR, TOOLS AND INCIDENTALS NECESSARY TO COMPLETE THIS ITEM SHALL BE INCLUDED IN THE UNIT PRICE BID FOR ITEM 203 - EXCAVATION (FOR PAVEMENT REPAIR).

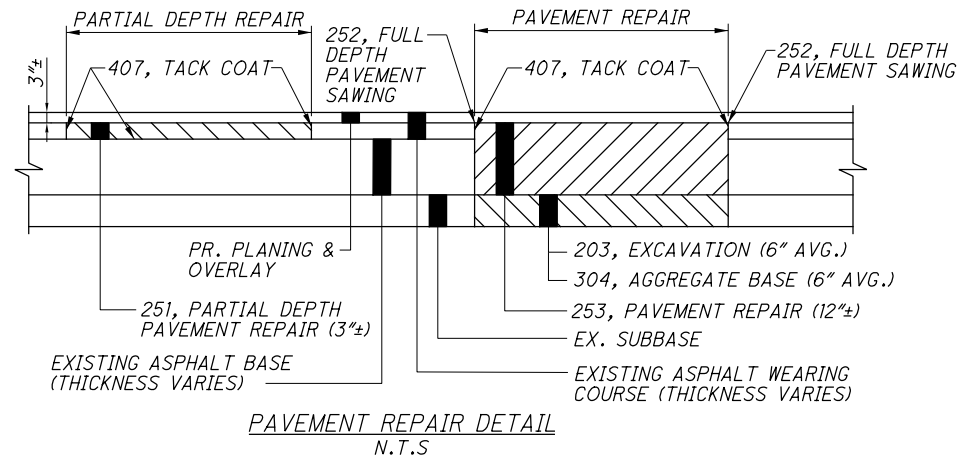
ITEM 304 - AGGREGATE BASE (FOR PAVEMENT REPAIR)

ITEM 304 - AGGREGATE BASE (FOR PAVEMENT REPAIR) SHALL BE USED AS DIRECTED BY THE ENGINEER TO BACKFILL AREAS WHICH WERE EXCAVATED UNDER ITEM 203 EXCAVATION (FOR PAVEMENT REPAIR).

NOTE REMOVED:
ITEM 254- PAVEMENT PLANING, ASPHALT CONCRETE, AS PER PLAN

ITEM 251 - PARTIAL DEPTH PAVEMENT REPAIR

A QUANTITY OF THIS ITEM SHALL BE PROVIDED FOR USE AS DIRECTED BY THE ENGINEER. THE ITEM SHALL CONSIST OF REPAIRING EXISTING LOCATIONS EXHIBITING SURFACE DETERIORATION AND PLACING 3"± OF ITEM 448 ASPHALT CONCRETE, TYPE 2. THE ASPHALT CONCRETE SHALL BE COMPACTED WITH A TYPE I PNEUMATIC TIRE ROLLER AND A STEEL ROLLER AS PER 401.13. IT IS NOT THE INTENT TO REPAIR EVERY DETERIORATED AREA WITHIN THE PROJECT. THE ENGINEER SHALL DETERMINE WHICH AREAS ARE TO BE REPAIRED. UNLESS OTHERWISE DIRECTED BY THE ENGINEER, THIS ITEM SHALL BE PERFORMED AFTER THE COMPLETION OF MAINLINE PAVEMENT PLANNING. PAYMENT SHALL BE BASED ON THE ACTUAL NUMBER OF SQUARE YARDS OF PAVEMENT REPAIR.



ITEM 253 - PAVEMENT REPAIR

A QUANTITY OF THIS ITEM SHALL BE PROVIDED FOR USE AS DIRECTED BY THE ENGINEER. THIS ITEM SHALL CONSIST OF CUTTING AND REMOVING DETERIORATED PAVEMENT FULL DEPTH AND PLACING 12"± 301 ASPHALT CONCRETE BASE, PG64-22. THE MAXIMUM COMPACTED DEPTH OF ANY ONE LAYER SHALL BE 6 INCHES. UNLESS OTHERWISE DIRECTED BY THE ENGINEER, THIS ITEM SHALL BE PERFORMED AFTER THE COMPLETION OF MAINLINE PAVEMENT PLANNING. IT IS NOT THE INTENT TO REPAIR EVERY DETERIORATED AREA WITHIN THE PROJECT. THE ENGINEER SHALL DETERMINE WHICH AREAS TO BE REPAIRED. PAYMENT SHALL BE BASED ON THE ACTUAL NUMBER OF SQUARE YARDS OF PAVEMENT REMOVED AND REPLACED TO THE LIMITS DESIGNATED BY THE ENGINEER. SEE PAVEMENT REPAIR DETAIL ON THIS SHEET.

ITEM 609 - COMBINATION CURB AND GUTTER, TYPE 2, AS PER PLAN

IN ADDITION TO THE REQUIREMENTS OF ODOT CMS 609, THIS ITEM SHALL ALSO INCLUDE FULL DEPTH PAVEMENT SAWING, EXCAVATION, EMBANKMENT, DISPOSAL OF EXCAVATED MATERIALS, SUBGRADE COMPACTION, 6" AGGREGATE BASE, 8" ASPHALT CONCRETE BASE, AND LINEAR GRADING, AS INDICATED ON THE TYPICAL SECTIONS.

ADDITIONALLY, THIS ITEM SHALL ALSO INCLUDE ALL NECESSARY DRAINAGE CORINGS/FITTINGS TO MAINTAIN EXISTING DRAINAGE CONNECTIONS THROUGH THE CURB OR CURB AND GUTTER.

THE FOLLOWING ESTIMATED QUANTITY HAS BEEN CARRIED TO THE GENERAL SUMMARY FOR USE AS DIRECTED BY THE ENGINEER:

ITEM 609 - COMBINATION CURB AND GUTTER, TYPE 2, AS PER PLAN 1500 FT

PAYMENT FOR THE ABOVE STATED SHALL BE INCLUDED IN THE PERTINENT UNIT PRICE BID FOR ITEM 609 - COMBINATION CURB AND GUTTER, TYPE 2, AS PER PLAN AND SHALL INCLUDE ALL LABOR, MATERIAL, AND EQUIPMENT NECESSARY TO PERFORM THIS WORK.

ITEM 202 - CURB AND GUTTER REMOVED

THE FOLLOWING ESTIMATED QUANTITY HAS BEEN CARRIED TO THE GENERAL SUMMARY FOR USE AS DIRECTED BY THE ENGINEER:

ITEM 202 - CURB AND GUTTER REMOVED 1500 FT

ITEM 608 - CURB RAMP

UNLESS OTHERWISE DIRECTED BY THE ENGINEER, INSTALLATION OF THE CURB RAMPS/DETECTABLE WARNINGS WILL BE PERFORMED PRIOR TO MAINLINE RESURFACING.

CONSTRUCTION NOISE

ACTIVITIES AND LAND USE ADJACENT TO THIS PROJECT MAY BE AFFECTED BY CONSTRUCTION NOISE. IN ORDER TO MINIMIZE ANY ADVERSE CONSTRUCTION NOISE IMPACTS, DO NOT OPERATE POWER-OPERATED CONSTRUCTION-TYPE DEVICES BETWEEN THE HOURS OF 7:00 P.M. AND 8:00 A.M. IN ADDITION, DO NOT OPERATE AT ANY TIME ANY DEVICE IN SUCH A MANNER THAT THE NOISE CREATED SUBSTANTIALLY EXCEEDS THE NOISE CUSTOMARILY AND NECESSARILY ATTENDANT TO THE REASONABLE AND EFFICIENT PERFORMANCE OF SUCH EQUIPMENT.

NOTE REMOVED:

ITEM 611 - MANHOLE ADJUSTED TO GRADE, AS PER PLAN

ITEM 448 - ASPHALT CONCRETE SURFACE COURSE, TYPE 1, (448), PG64-22, AS PER PLAN

703.05 - DO NOT USE ANY FINE OR COARSE AGGREGATE WITH 'SR' OR 'SRH' DESIGNATION ACCORDING TO THE OFFICE OF MATERIALS MANAGEMENT (OMM) IN ANY JOB MIX FORMULA (JMF) FOR THIS ITEM.

ITEM 301 - ASPHALT CONCRETE BASE, PG64-22

THE FOLLOWING ESTIMATED QUANTITY HAS BEEN CARRIED TO THE GENERAL SUMMARY FOR USE AS DIRECTED BY THE ENGINEER:

ITEM 301 - ASPHALT CONCRETE BASE, PG64-22 77 CY

NOTE REMOVED:

ITEM 448 - ASPHALT CONCRETE INTERMEDIATE COURSE, TYPE 1, PG70-22M, AS PER PLAN

- ITEM 611 - MANHOLE ADJUSTED TO GRADE, APP
- ITEM 638 - VALVE BOX ADJUSTED TO GRADE, APP
- ITEM 623 - MONUMENT BOX ADJUSTED TO GRADE, APP

IN ADDITION TO THE REQUIREMENTS OF CMS 611.10.D FOR MANHOLES, 623.05 FOR MONUMENT BOXES, OR 638.18 FOR VALVE BOXES, THE CONTRACTOR WILL MAKE A CLEAN CIRCULAR CUT AROUND THE CASTING (48" DIAMETER FOR STORM AND SANITARY MANHOLE CASTINGS, 24"-28" FOR VALVE AND MONUMENT BOXES, AND 2' IN DIAMETER LARGER THAN THE CASTING DIAMETER FOR ANY CASTING THAT ARE LARGER THAN STANDARD MANHOLES SUCH AS TELECOMMUNICATIONS MANHOLE CASTINGS) AND REMOVE AND DISCARD THE EXISTING CASTING. INSTALL A NEW CASTING TO GRADE (ACCORDING TO TOLERANCES AS SHOWN ON STANDARD CONSTRUCTION DRAWING BP-3.1) AFTER THE PAVEMENT SURFACE COURSE HAS BEEN REPLACED.

CMS 499 CLASS QCMS CONCRETE (DYE THE CONCRETE SUCH THAT ITS COLOR CLOSELY MATCHES THE COLOR OF THE SURROUNDING PAVEMENT) WILL BE USED FOR BACKFILLING THE FULL PAVEMENT SECTION AND THE JOINT BETWEEN THE ASPHALT AND CONCRETE WILL BE SEALED WITH CMS 702.01 PG BINDER. EPOXY COATED REBAR SHALL BE PLACED IN THE CONCRETE AT 6" MAXIMUM ON CENTER AND A MINIMUM OF 3.5" CLEARANCE FROM THE TOP, BOTTOM AND SIDES. THE CONCRETE WILL BE VIBRATED SUFFICIENTLY TO ELIMINATE AIR POCKETS UNDER THE FRAME.

PAYMENT WILL INCLUDE REMOVAL OF THE EXISTING MATERIAL, INSTALLATION AND FURNISHING OF A NEW CASTING, AND ALL LABOR AND MATERIALS REQUIRED TO COMPLETE THIS ITEM OF WORK AS DESCRIBED

- ITEM 611 - MANHOLE ADJUSTED TO GRADE, APP 2 EA
- ITEM 638 - VALVE BOX ADJUSTED TO GRADE, APP 2 EA
- ITEM 623 - MONUMENT BOX ADJUSTED TO GRADE, APP 2 EA

ITEM 611 - CATCH BASIN ADJUSTED TO GRADE

AN ESTIMATED QUANTITY HAS BEEN CARRIED TO THE GENERAL SUMMARY FOR THE REMOVAL AND REPLACEMENT OF DETERIORATED OR DAMAGED CATCH BASIN CASTINGS WITHIN THE PROJECT LIMITS. THE LOCATION OF THE CASTINGS SHALL BE DETERMINED BY THE PROJECT ENGINEER.

ITEM 611 - CATCH BASIN ADJUSTED TO GRADE 2 EA

ITEM SPECIAL - MISCELLANEOUS METAL

EXISTING CASTINGS MAY PROVE TO BE UNSUITABLE FOR REUSE, AS DETERMINED BY THE ENGINEER. IT SHALL BE THE CONTRACTOR'S RESPONSIBILITY TO PROVIDE THE CASTINGS OF THE REQUIRED TYPE, SIZE AND STRENGTH (HEAVY OR LIGHT FOR THE PARTICULAR STRUCTURE IN QUESTION. ALL MATERIAL SHALL MEET ITEM 611 OF THE SPECIFICATIONS AND SHALL HAVE THE PRIOR APPROVAL OF THE ENGINEER.

THE FOLLOWING ESTIMATED QUANTITY HAS BEEN CARRIED TO THE GENERAL SUMMARY FOR USE AS DIRECTED BY THE ENGINEER.

ITEM SPECIAL, MISCELLANEOUS METAL 1,500 POUNDS

THE CONTRACTOR IS CAUTIONED TO USE EXTREME CARE IN THE REMOVAL, STORAGE AND REPLACEMENT OF ALL EXISTING CASTINGS. CASTINGS DAMAGED BY THE NEGLIGENCE OF THE CONTRACTOR, AS DETERMINED BY THE ENGINEER, SHALL BE REPLACED WITH THE PROPER NEW CASTINGS AT THE EXPENSE OF THE CONTRACTOR.

BENCHMARKS

THE FOLLOWING POINTS SHALL BE USED AS BENCHMARKS FOR THE CONSTRUCTION OF THE PROJECT:

POINT	NORTHING	EASTING	ELEVATION	DESCRIPTION
CP1	583451.494	2276196.453	1030.874	REBAR STAMPED "AZIMUTH MARK"
CP2	583148.656	2276638.055	1037.053	REBAR STAMPED "PRIMARY PROJECT CONTROL"
CP3	583162.044	2281392.777	1083.969	REBAR STAMPED "AZIMUTH MARK"
CP4	583157.481	2281938.384	1086.198	REBAR STAMPED "PRIMARY PROJECT CONTROL"
CP5	583064.959	2286473.611	1180.133	REBAR STAMPED "PRIMARY PROJECT CONTROL"
CP6	583128.207	2286924.91	1182.123	REBAR STAMPED "AZIMUTH MARK"
CP20	583065.124	2278190.234	1043.322	BM1-NE PORCH CORNER (548 FROST RD)
CP40	583156.685	2286221.624	1179.452	BM10-SW CORNER CONC. PAD AROUND CVS SIGN
CP103	583036.7	2281299.175	1089.919	BM4-NE PORCH CORNER (858 FROST RD)
SV5288	583017.615	2285612.617	1156.769	BM9-NW PORCH CORNER (1296 FROST RD)
SV8523	583057.874	2279335.351	1068.671	BM2-NW PORCH CORNER (662 FROST RD)

ITEM 407 - TACK COAT, AS PER PLAN

ITEM 407 - TACK COAT FOR INTERMEDIATE COURSE, AS PER PLAN

ITEM 407 - TACK COAT, AS PER PLAN AND ITEM 407 - TACK COAT FOR INTERMEDIATE COURSE, AS PER PLAN SHALL CONSIST OF A SPECIALIZED ANIONIC TRACKLESS ASPHALT EMULSION FOR HOT MIX ASPHALT CONSTRUCTION. ALL REQUIREMENTS OF ODOT CMS 407 APPLY EXCEPT AS NOTED BELOW:

MATERIAL

CONFORM TO THE FOLLOWING PHYSICAL PROPERTIES:

PARAMETER	TEST METHOD	MIN.	MAX.
SAYBOLT FUROL VISCOSITY, SFS @ 25°C	ASTM D88	15	100
STORAGE STABILITY, 24 HRS, %	ASTM D244	1	
STORAGE STABILITY, 5DAYS, %	ASTM D244	5	
RESIDUE BY DISTILLATION, %	ASTM D244	50	
OIL DISTILLATE, % SIEVE TEST, %	ASTM D244	1	0.3
TEST ON RESIDUE: PENETRATION, @ 25°C	ASTM D5	20	
SOFTENING POINT RANGE °C	ASTM D36	65	
SOLUBILITY, % ORIGINAL BINDER DSR @82°C	ASTM D2042 AASHTO T111	97.5	1

MATERIAL SHALL NOT CONTAIN FILLER SUCH AS CLAY, ETC.

MATERIAL (CONT.)

PROVIDE ADEQUATE CLEANING EQUIPMENT AND DISTRIBUTOR. USEDISTRIBUTORS, DESIGNED, EQUIPPED, MAINTAINED AND OPERATED TO APPLY ASPHALT MATERIAL AT THE SPECIFIED RATE WITH UNIFORM PRESSURE OVER THE REQUIRED WIDTH OF APPLICATION. ENSURE THAT THE DISTRIBUTOR INCLUDES A TACHOMETER, PRESSURE GAUGES, ACCURATE VOLUME MEASURING DEVICES, OR A CALIBRATED TANK. MOUNT AN ACCURATE THERMOMETER WITH A RANGE COVERING THE SPECIFIED APPLICATION TEMPERATURE FOR ASPHALT MATERIAL AT CENTER HEIGHT OF THE TANK WITH THE STEM EXTENDING INTO THE ASPHALT MATERIAL. ENSURE THAT THE DISTRIBUTOR HAS A FULL CIRCULATING SYSTEM WITH A SPRAY BAR THAT IS ADJUSTABLE LATERALLY AND VERTICALLY AND WILL MAINTAIN A CONSTANT HEIGHT ABOVE THE PAVEMENT UNDER VARIABLE LOAD CONDITIONS. SUPPLY EACH DISTRIBUTOR WITH SUITABLE CHARTS SHOWING TRUCK AND PUMP SPEEDS AND OTHER PERTINENT APPLICATION DATA NECESSARY TO OBTAIN THE REQUIRED RESULTS. REFER TO MANUFACTURER REPRESENTATIVE FOR CORRECT DISTRIBUTOR SETTINGS.

DO NOT APPLY THE ASPHALT MATERIAL IF THE SURFACE TEMPERATURE IS BELOW THE MINIMUM REQUIRED FOR THE PAVEMENT COURSE TO BE PLACED.

ENSURE THE PAVEMENT SURFACE IS THOROUGHLY CLEAN AND DRY WHEN THE ASPHALT MATERIAL IS PLACED.

NOTE THAT NTSS-IHM IS NOT COMPATIBLE WITH CATIONIC EMULSIONS. ALL EQUIPMENT SHOULD BE THOROUGHLY CLEANED IF CATIONIC EMULSION WAS PREVIOUSLY PRESENT. PRODUCT THAT IS TO BE STORED FOR AN EXTENDED TIME PERIOD SHOULD BE AGITATED PRIOR TO USE. NOZZLE SPRAY PATTERN SHALL BE IDENTICAL TO ONE ANOTHER ALONG THE DISTRIBUTOR SPRAY BAR. THE ANGLE OF THE NOZZLE SHOULD BE A 15 TO 30 DEGREE ANGLE TO THE SPRAY BAR AXIS TO MAXIMIZE OVERLAP.

NTSS-IHM SHOULD BE APPLIED AT A RATE OF 0.05 GALLONS PER SQUARE YARD. RECOMMENDED APPLICATION TEMPERATURE IS 160° F TO 180° F. DO NOT EXCEED 180° F.

TACK SHALL ONLY BE APPLIED TO AREAS THAT WILL BE COVERED BY A PAVEMENT COURSE DURING THE SAME DAY.

THE ENGINEER AND MANUFACTURERS REPRESENTATIVE WILL APPROVE THE QUANTITY, RATE OF APPLICATION, TEMPERATURE, DISTRIBUTOR SETTINGS AND AREAS TO BE TREATED PRIOR TO APPLYING TACK COAT. THE ENGINEER WILL DETERMINE THE ACTUAL APPLICATION RATE IN GALLONS PER SQUARE YARD BY A CHECK ON THE PROJECT. THE APPLICATION RATE SHALL BE CONSIDERED SATISFACTORY WHEN THE ACTUAL RATE IS WITHIN 10% OF THE REQUIRED RATE AND THE MATERIAL IS APPLIED UNIFORMLY.

WORK LIMITS

THE WORK LIMITS SHOWN ON THESE PLANS ARE FOR PHYSICAL CONSTRUCTION ONLY. PROVIDE THE INSTALLATION AND OPERATION OF ALL WORK ZONE TRAFFIC CONTROL AND WORK ZONE TRAFFIC CONTROL DEVICES REQUIRED BY THESE PLANS WHETHER INSIDE OR OUTSIDE THESE WORK LIMITS.

PAVEMENT MARKINGS

PRIOR TO COMMENCING WORK, THE CONTRACTOR SHALL DOCUMENT ALL EXISTING PAVEMENT MARKINGS AND SUBMIT THIS INVENTORY TO THE ENGINEER. UPON THE COMPLETION OF THE SURFACE COURSE, THE CONTRACTOR SHALL PLACE PAVEMENT MARKINGS PER ODOT CMS 642 AT THEIR ORIGINAL LOCATIONS UNLESS OTHERWISE DIRECTED BY THE ENGINEER.

PAYMENT TO DOCUMENT AND INVENTORY THE EXISTING PAVEMENT MARKINGS SHALL BE INCLUDED IN VARIOUS ITEMS OF THE PLANS. NO SEPARATE PAYMENT SHALL BE MADE.

BENCHMARK VERIFICATION

ALL CONTROL POINTS SHOULD BE FIELD VERIFIED BY THE CONTRACTOR PRIOR TO CONSTRUCTION. THE SURVEYOR SHALL RUN AN INDEPENDENT HORIZONTAL AND VERTICAL TRAVERSE, AS NEEDED, THROUGH ALL BENCHMARKS PROVIDED AND PROVIDE A RECORD COPY OF THE FIELD BOOK TO THE ENGINEER PRIOR TO THE START OF CONSTRUCTION. ANY DISCREPANCIES OR POSSIBLE OMISSIONS SHOULD BE BROUGHT TO THE ATTENTION OF THE ENGINEER PRIOR TO CONSTRUCTION.

ITEM SPECIAL - PRECONSTRUCTION VIDEO TAPING

THE CITY OF STREETSBORO SHALL REQUIRE AN AUDIOVISUAL RECORDING OF THE PROJECT LIMITS AND ADJACENT AREAS, ESPECIALLY DRIVEWAY APRONS, MAILBOXES AND APPROACHES PRIOR TO CONSTRUCTION. THE RECORDING SHALL BE DVD FORMAT AND A COPY SHALL BE RETAINED AT THE CITY OF STREETSBORO ADMINISTRATION OFFICE. THIS RECORDING SHALL BE MADE IN ACCORDANCE WITH CITY SPECIFICATIONS AND SHALL BE PAID FOR AS A LUMP SUM, TO BE COMPLETED TO THE SATISFACTION OF THE ENGINEER. THE FOLLOWING ESTIMATED QUANTITY HAS BEEN CARRIED TO THE GENERAL SUMMARY FOR THE WORK DESCRIBED ABOVE:

ITEM SPECIAL - PRECONSTRUCTION VIDEO TAPING LUMP

NOTE AND ITEM REMOVED:
ITEM 611 - MANHOLE COVER, AS PER PLAN

GENERAL LEGEND

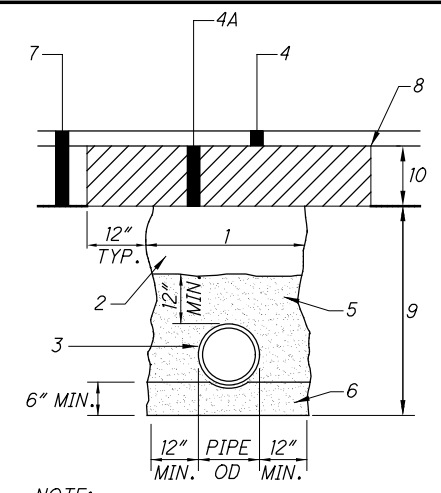
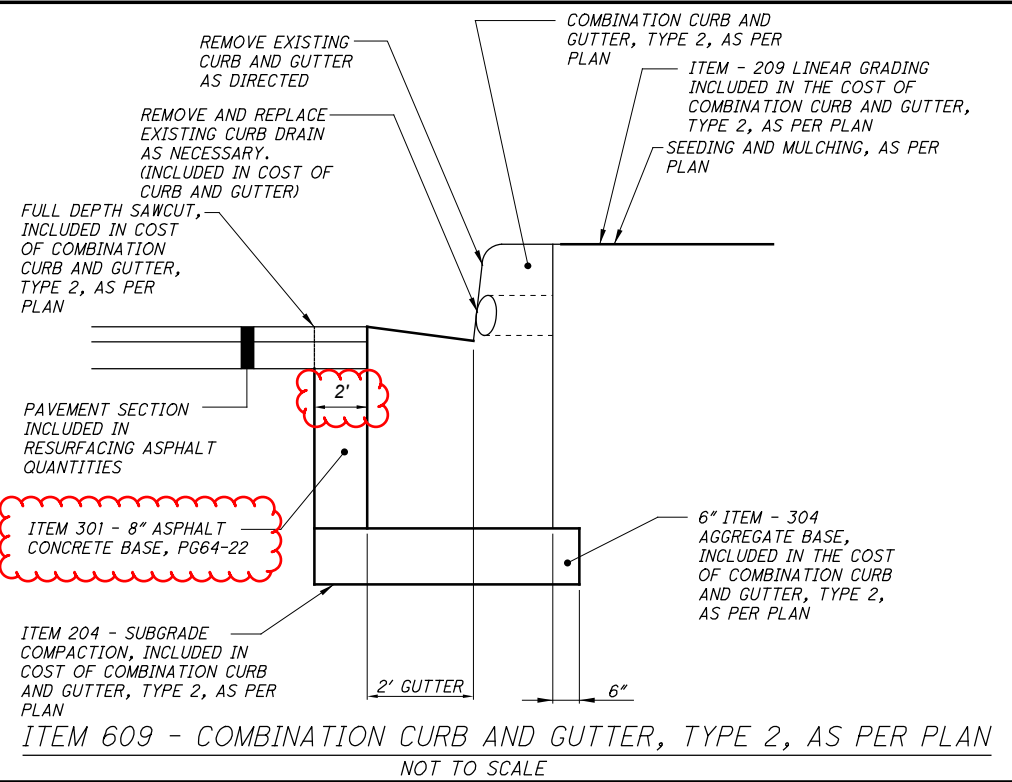
- EXISTING MONUMENT BOX
- EXISTING UTILITY POLE
- EXISTING SANITARY MANHOLE
- EXISTING MAILBOX
- EXISTING IRON PIN FOUND
- EXISTING GAS VALVE
- EXISTING FIRE HYDRANT
- EXISTING YARD LIGHT
- EXISTING GUY WIRE ANCHOR
- EXISTING FLAG POLE
- EXISTING IRON PIPE
- EXISTING LIGHT POLE
- EXISTING POST
- EXISTING ROCK
- EXISTING SIGN AND POST
- EXISTING WATER VALVE
- EXISTING CATCH BASIN
- EXISTING CURB INLET
- EXISTING CURB INLET
- EXISTING STORM MANHOLE
- EXISTING CATCH BASIN
- EXISTING PAPER BOX
- EXISTING WATER SERVICE
- EXISTING UNDERGROUND WATER LINE
- EXISTING UNDERGROUND GAS LINE
- EXISTING UNDERGROUND ELECTRIC LINE
- EXISTING UNDERGROUND PHONE LINE
- EXISTING UNDERGROUND SANITARY SEWER
- EXISTING UNDERGROUND STORM SEWER
- EXISTING FENCE
- EXISTING CURB
- EXISTING WALK
- EXISTING EDGE OF PAVEMENT
- EXISTING DRIVE
- PROPOSED CURB INLET
- PROPOSED STORM SEWER
- PROPOSED CURB AND GUTTER
- PROPOSED WALK
- PROPOSED CURB RAMP

BALLOON ABBREVIATION LEGEND

- EXISTING CATCH BASINS, MANHOLES, AND INLETS
- EXISTING SANITARY MANHOLES
- EXISTING WATER VALVES
- PROPOSED DRAINAGE STRUCTURE WORK
- MONUMENT BOX ADJUST TO GRADE
- MANHOLE ADJUST TO GRADE
- PROPOSED SIDEWALK/CURB RAMP
- VALVE BOX ADJUST TO GRADE

SHEET NUMBER										PARTICIPATION		ITEM	ITEM EXT.	GRAND TOTAL	UNIT	DESCRIPTION	SEE SHEET NO.
3	4	5	6	7	9	10				01/MPO/PV /STRE							
ROADWAY																	
										331		202	30000	331	SQ FT	WALK REMOVED	ITEM REMOVED: ITEM 202 - PAVEMENT REMOVED
	1500								50	1550	202	32500	1550	FT	CURB AND GUTTER REMOVED		
									20	20	202	35101	20	FT	PIPE REMOVED, 24" AND UNDER, AS PER PLAN		
									1	1	202	58100	1	EACH	CATCH BASIN REMOVED		
		77								77		301	0046000	77	CY	ASPHALT CONCRETE BASE, PG64-22	
									194	194		608	10000	194	SQ FT	4" CONCRETE WALK	
									326	326		608	52000	326	SQ FT	CURB RAMP	
	1500								50	1550		609	12001	1550	FT	COMBINATION CURB AND GUTTER, TYPE 2, AS PER PLAN	4
	2								4	6		623	39500	6	EACH	MONUMENT BOX ADJUSTED TO GRADE, AS PER PLAN	
EROSION CONTROL																	
	1000								60	1060		659	10001	1060	SQ YD	SEEDING AND MULCHING, AS PER PLAN	3
										5000		832	30000	5000	EACH	EROSION CONTROL	
DRAINAGE																	
									5	5		611	04400	5	FT	12" CONDUIT, TYPE B	
									10	10		611	04600	10	FT	12" CONDUIT, TYPE C	
									5	5		611	06100	5	FT	15" CONDUIT, TYPE C	
									1	3		611	98630	3	EACH	CATCH BASIN ADJUSTED TO GRADE	ITEM REMOVED: ITEM 611 - MANHOLE COVER, AS PER PLAN
	1500								300	1800		611	98690	1	EACH	CATCH BASIN, MISC. CITY OF AKRON NO. 3 INLET	
	2								3	5		SPECIAL	1800	1	LB	MISCELLANEOUS METAL	
										5		611	99655	5	EACH	MANHOLE ADJUSTED TO GRADE, AS PER PLAN	
PAVEMENT																	
									1064	1064		251	01000	1064	SQ YD	PARTIAL DEPTH PAVEMENT REPAIR	
									638	638		253	01000	638	SQ YD	PAVEMENT REPAIR	
									21272	21272		254	01001	21272	SQ YD	PAVEMENT PLANING, ASPHALT CONCRETE	
									2	2		304	20000	2	CU YD	AGGREGATE BASE	
									1064	1064		407	10001	1064	GALLON	TACK COAT, AS PER PLAN	5
									1064	1064		407	14001	1064	GALLON	TACK COAT FOR INTERMEDIATE COURSE, AS PER PLAN	5
									886	886		441	50101	886	CU YD	ASPHALT CONCRETE INTERMEDIATE COURSE, TYPE 2, (448)	ITEM REMOVED: ITEM 441 - ASPHALT CONCRETE SURFACE COURSE, TYPE 1, (448), PG64-22, AS PER PLAN
									886	886		441	50201	886	CU YD	ASPHALT CONCRETE SURFACE COURSE, TYPE 1, (448), PG64-22, AS PER PLAN	
WATER WORKS																	
		2							1	5		638	10800	5	EACH	VALVE BOX ADJUSTED TO GRADE, AS PER PLAN	
TRAFFIC CONTROL																	
									1.57	1.57		644	00300	1.57	MILE	CENTER LINE	
									264	264		644	00400	264	FT	CHANNELIZING LINE, 8"	
									211	211		644	00500	211	FT	STOP LINE	
									98	98		644	00600	98	FT	CROSSWALK LINE	
									450	450		644	00700	450	FT	TRANSVERSE/DIAGONAL LINE	
									2	2		644	01110	2	EACH	SCHOOL SYMBOL MARKING, 96"	
									5	5		644	01300	5	EACH	LANE ARROW	
MAINTENANCE OF TRAFFIC																	
									200	200		614	11110	200	HOURLY	LAW ENFORCEMENT OFFICER WITH PATROL CAR FOR ASSISTANCE	
									10	10		614	12460	10	EACH	WORK ZONE MARKING SIGN	
									3.14	3		614	21400	3	MILE	WORK ZONE CENTER LINE, CLASS II	
									506	506		614	23000	506	FT	WORK ZONE CHANNELIZING LINE, CLASS I	
									448	448		614	26000	448	FT	WORK ZONE STOP LINE, CLASS I	
INCIDENTALS																	
										LUMP		614	11000	LUMP		MAINTAINING TRAFFIC	
										LUMP		623	10000	LUMP		CONSTRUCTION LAYOUT STAKES	
										LUMP		624	10000	LUMP		MOBILIZATION	
										LUMP		SPECIAL	69098400	LUMP		PRECONSTRUCTION VIDEO TAPING	5

CALCULATED MJT CHECKED CJT
GENERAL SUMMARY
POR-CR 197-01.03
 8
 19



NOTE:

1. ALL GRANULAR MATERIAL AND AGGREGATE SHALL BE VIRGIN CRUSHED LIMESTONE.
2. INCLUDED IN THE UNIT PRICE FOR THE PERTINENT MAINLINE RESURFACING BID ITEM.

KEYED NOTES

- 1 EXCAVATE WIDTH OF TRENCH AS PER DM-1.4.
- 2 PLACE SUITABLE SOIL OR GRANULAR BACKFILL IN 6" MAX. LIFTS. SUITABLE SOIL SHALL BE COMPACTED TO 90% MIN. (98% MIN. UNDER PAVEMENT) DRY DENSITY, PER ASTM D698, GRANULAR BACKFILL SHALL BE COMPACTED TO 98% (98% UNDER PAVEMENT) RELATIVE DENSITY, PER ASTM 4353. GRANULAR BACKFILL REQUIRED UNDER PAVEMENT.
- 3 PROPOSED STORM OR SANITARY SEWER
- 4 PAVEMENT RESURFACING
- 4A 12" ODOT 301 OR ODOT 305 FOR TRENCH REPAIR. INCLUDED IN COST OF PIPE REPLACEMENT.
- 5 NO. 57 OR NO. 67 AGGREGATE PLACED A MINIMUM OF 12" ABOVE THE TOP OF THE PIPE
- 6 NO. 57 OR NO. 67 AGGREGATE PLACED A MINIMUM OF 6" BELOW THE BOTTOM OF THE PIPE
- 7 EXISTING PAVEMENT
- 8 SAW CUT VERTICAL EDGE THROUGH EXISTING PAVEMENT.
- 9 ALL ITEMS SHOWN INCLUDED IN PAYMENT FOR PLACEMENT OF CONDUIT.
- 10 ALL ITEMS SHOWN INCLUDED IN PAYMENT FOR ITEM 202 - PIPE REMOVED 24" AND UNDER, AS PER PLAN.

SEWER TRENCH
NOT TO SCALE

CALCULATED
MJT
CHECKED
CJT

MISCELLANEOUS DETAILS

POR-CR 197-01.03