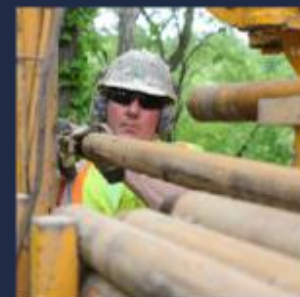
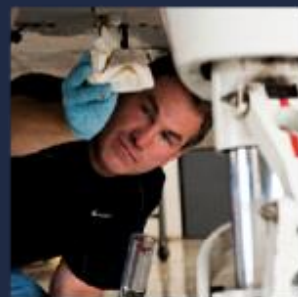
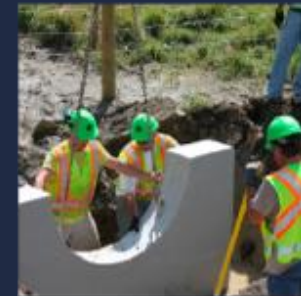


ROS-159-0.41 (BRIDGE STREET)

PRE-BID MEETING (JANUARY 8, 2025)



OHIO DEPARTMENT OF
TRANSPORTATION



CITY OF
CHILICOTHE
OHIO

ROS-159-0.41 PRE-BID MEETING

Tom Barnitz, P.E.
ODOT Project Manager

PRESENTATION OVERVIEW

- **Welcome & Housekeeping** (Recorder, hold questions, minutes, PP, restrooms)
- **ODOT & Consultant Team Introductions**
- **Project Location**
- **Project Scope**
- **Unique Items and Project Work**
- **Schedule and Miscellaneous**
- **Question and Answer Session** (State your Name and Company prior to question)



INTRODUCTIONS



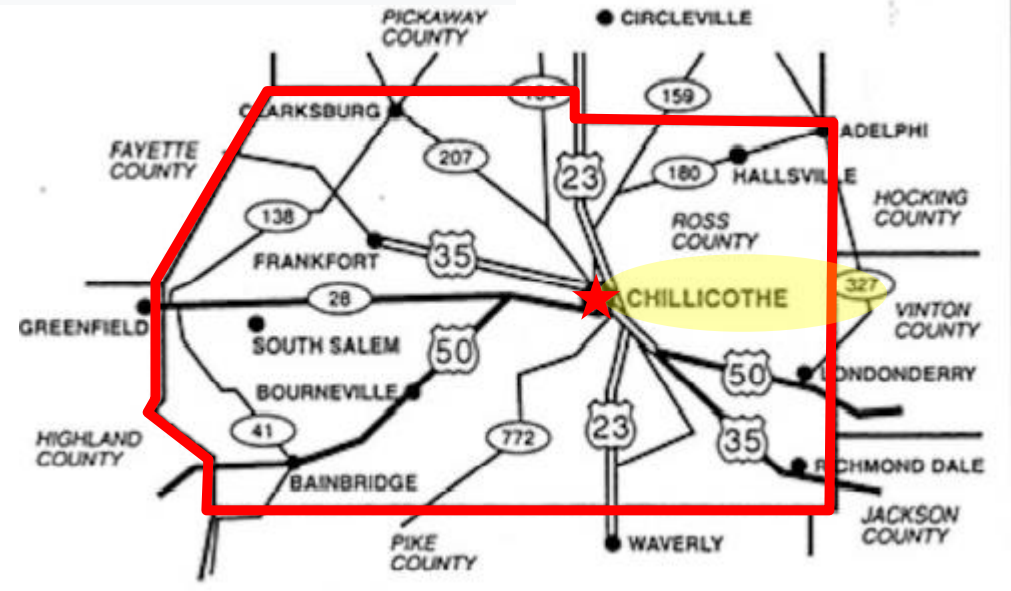
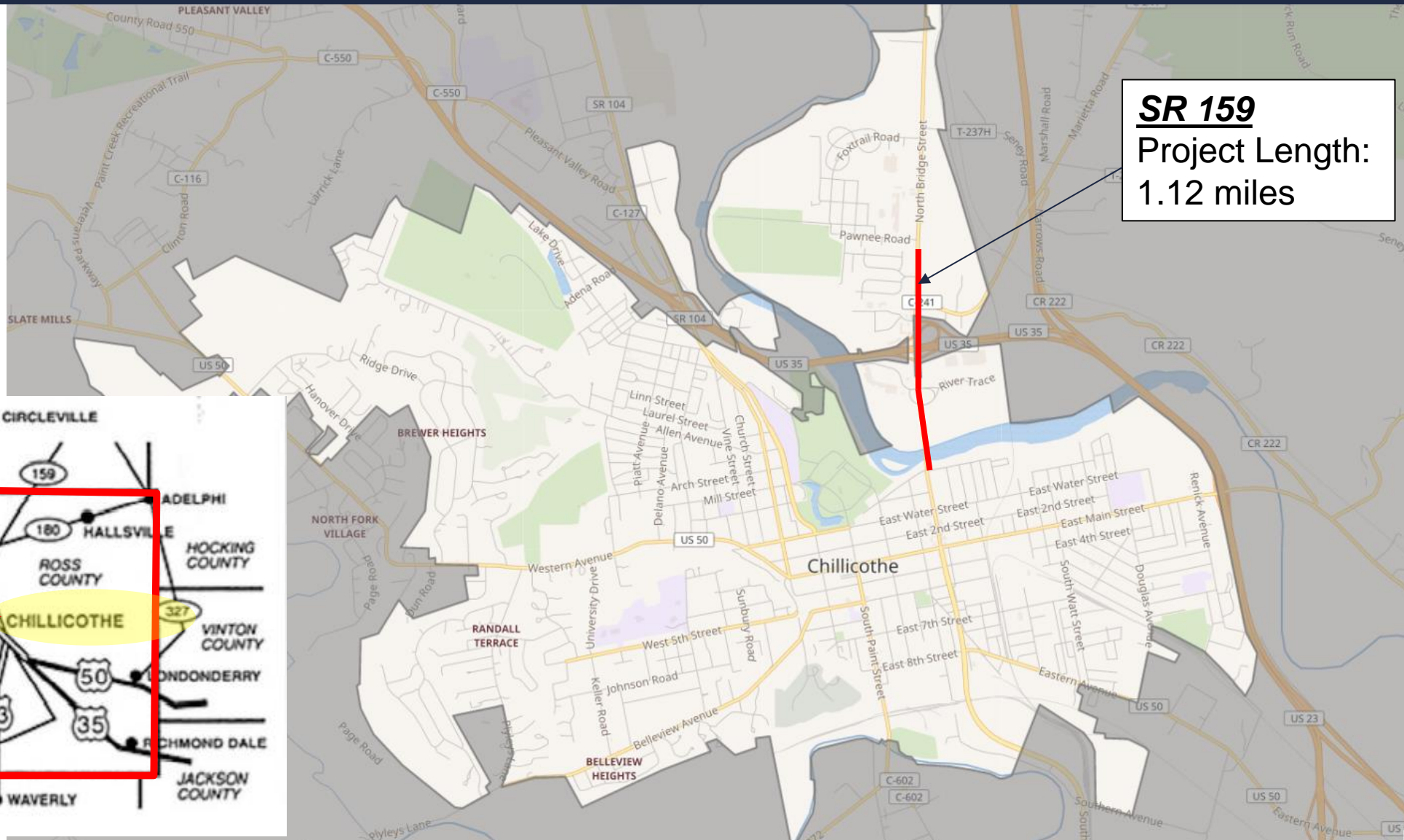
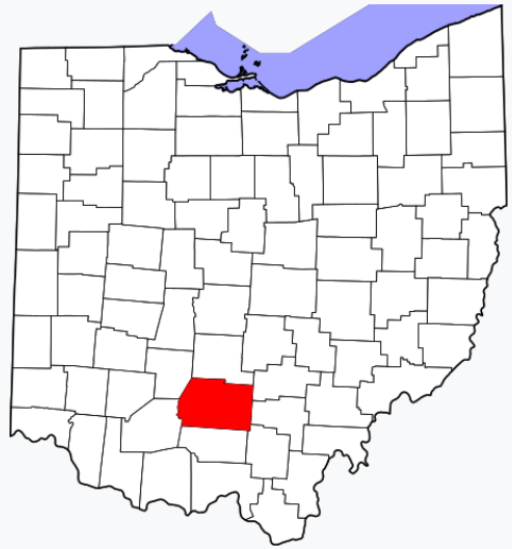
Area Engineer – Zach Schaaf

Project Engineer – Jason Bednarczyk

Construction Inspection Consultant – WSP

Engineer of Record – Burgess & Niple (Daniel Soroka, PE and Josh Pennock, PE)

PROJECT LOCATION



REGIONAL ROAD NETWORK

- ROS-159 / US 35 - interchange with US 35
- US 23 (north-south)
- US 50 (east-west)
- Traffic comes from surrounding counties to this Regional Retail / Commercial District
- This is the reason for getting traffic lanes opened for Christmas shopping season.



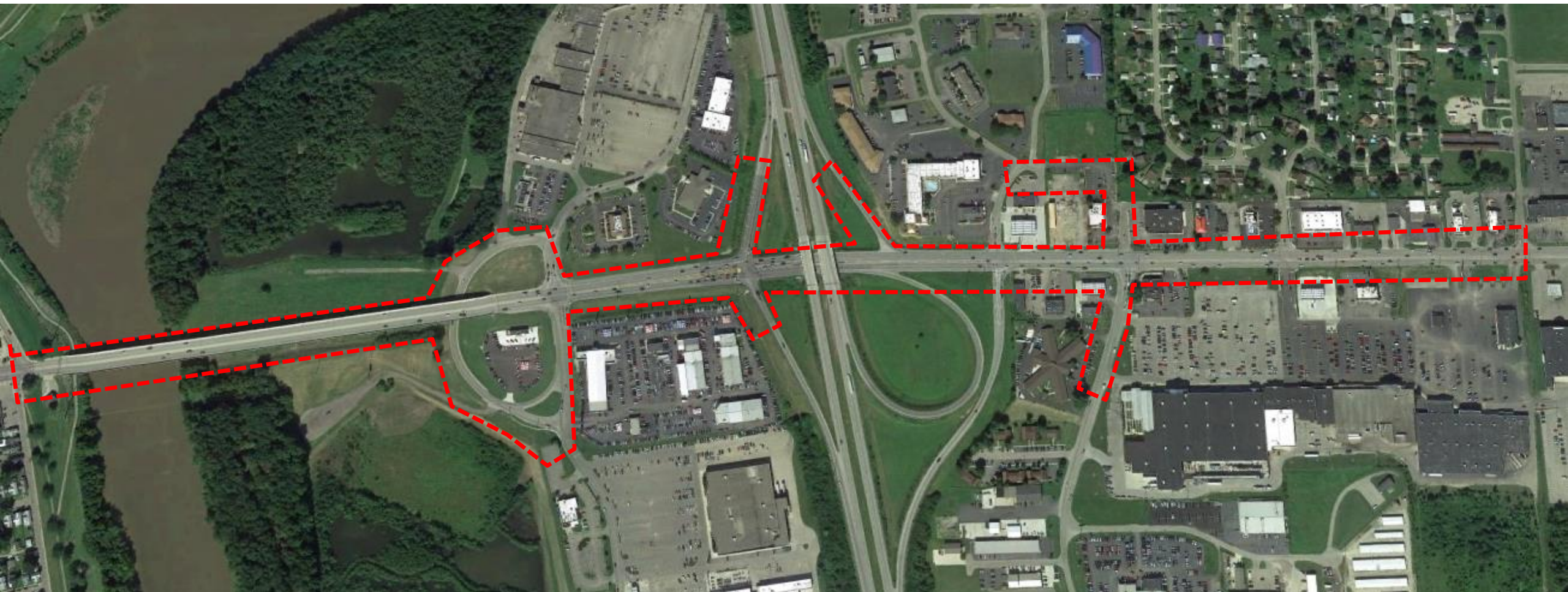
CITY OF
CHILICOTHE
OHIO

PROJECT CORRIDOR ISSUES

- Safety
- Crashes

- Pedestrian Access
- Congestion

North

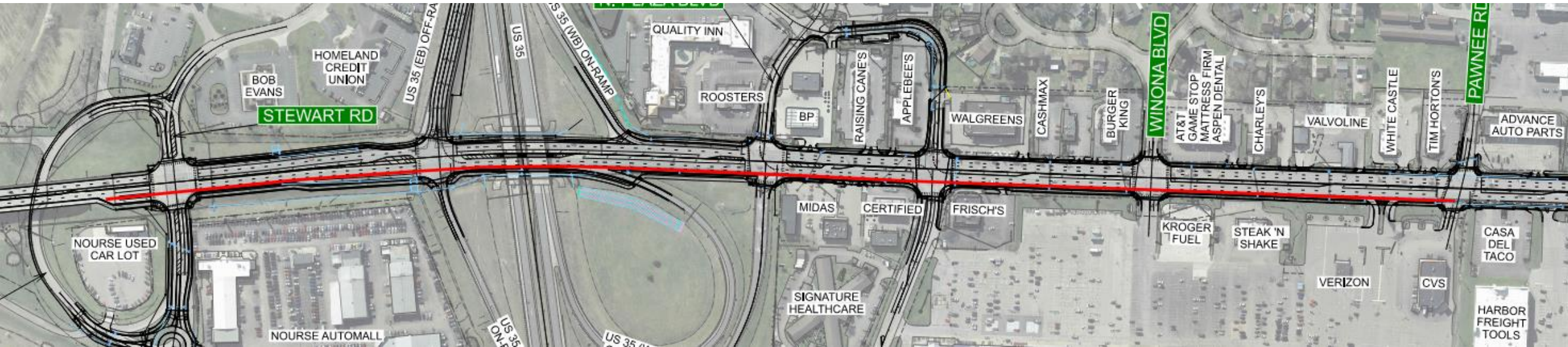


ROADWAY IMPROVEMENTS

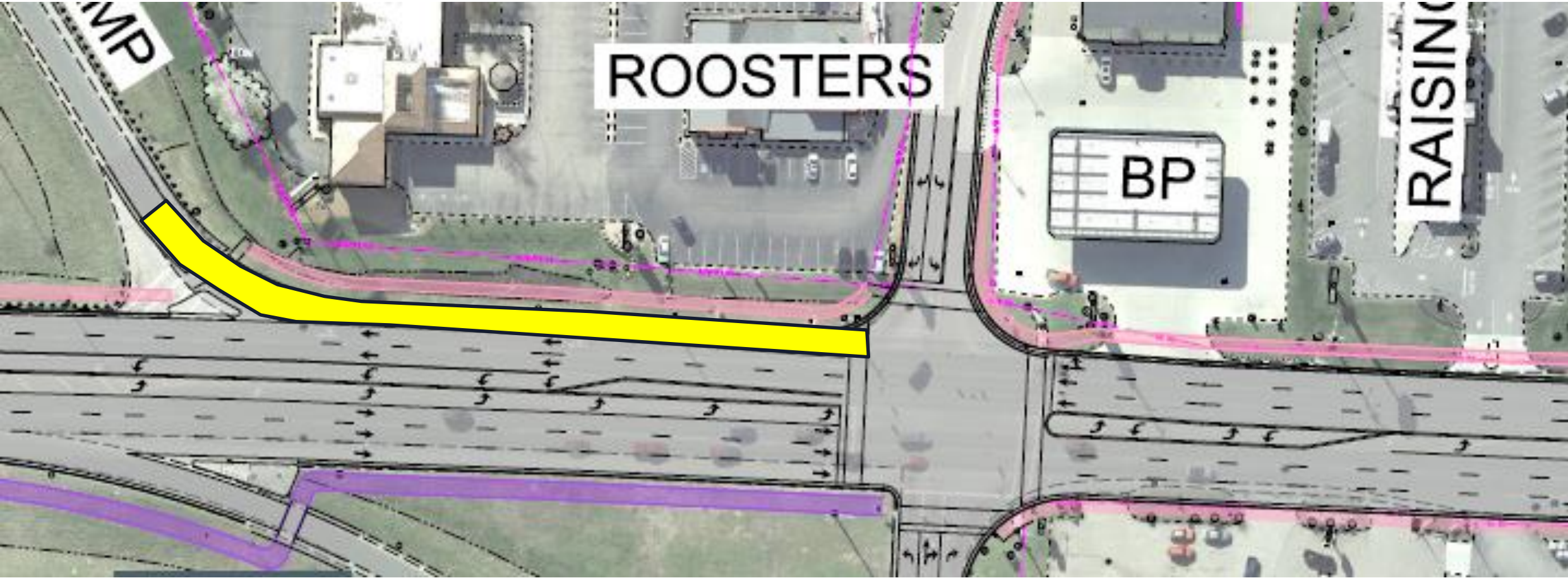
1. Add new Northbound Lane from Stewart to Pawnee
2. Add turn lanes/Re-configure Stewart/Consumer Center Intersection
3. Add new Southbound drop lane to US35 West ramp
4. Add new Marietta Rd (access road) behind Applebee's/Raising Cane's
5. Add shared-use path and sidewalks where feasible
6. Add Roundabout on Consumer Center Drive
7. Replace all of interchange composite pavement with all new concrete; full depth asphalt for new lanes outside of interchange and resurfacing of existing pavement
8. Interchange ramp re-alignment
9. Seven intersections with all new traffic signal poles, lights and signal control equipment
10. Aesthetic enhancements - add pocket parks, paint bridge railing, replace poles and lights on bridge, roundabout plantings

ADDITIONAL NORTHBOUND LANE ON BRIDGE STREET

- From north of the Scioto River bridge to Pawnee Rd



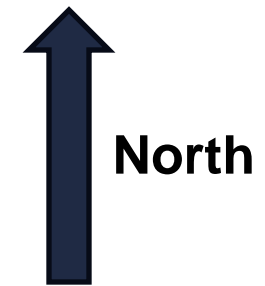
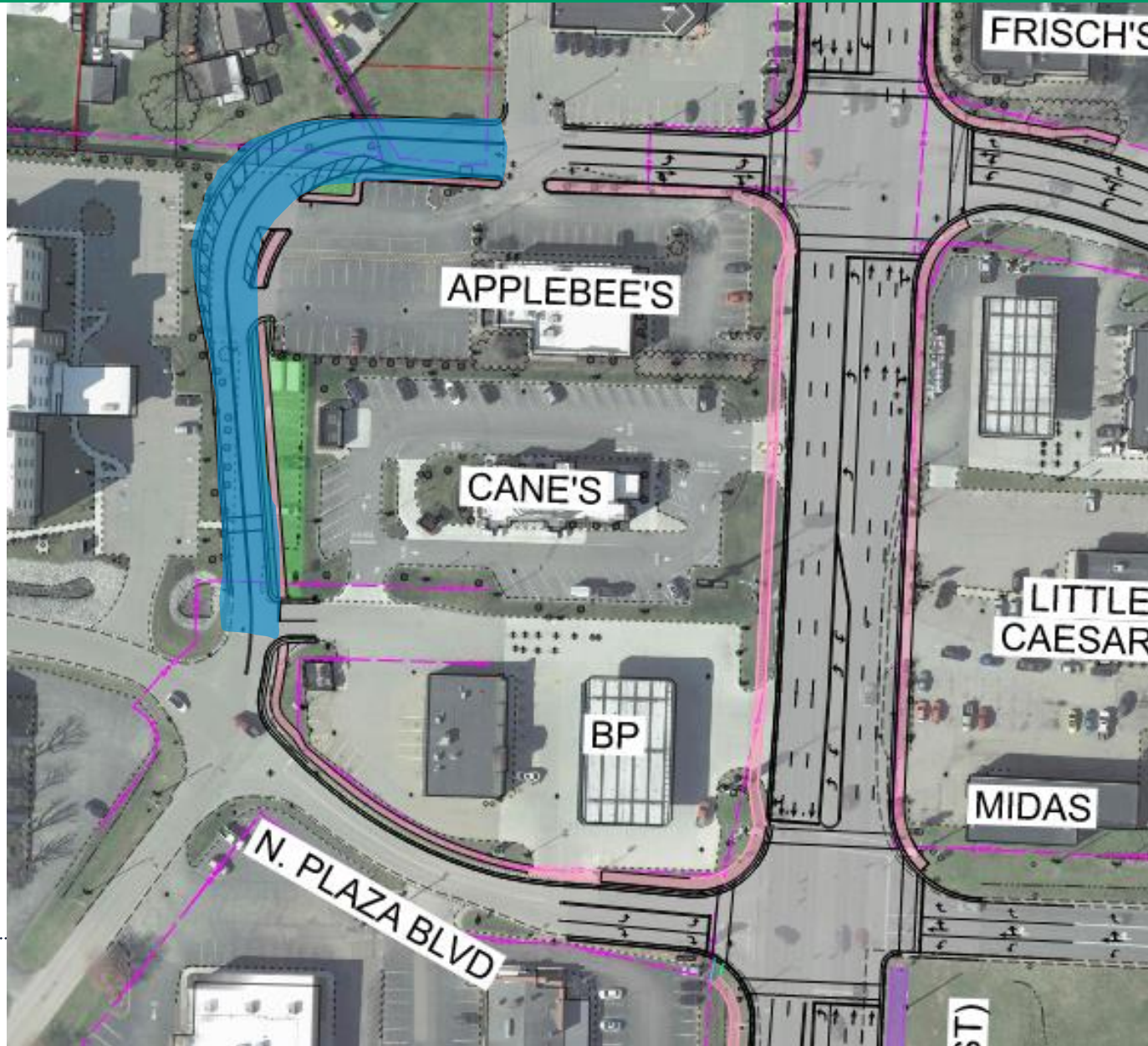
ADD DROP LANE TO US35 WESTBOUND RAMP



North



NEW ACCESS ROAD BETWEEN N. PLAZA & MARIETTA

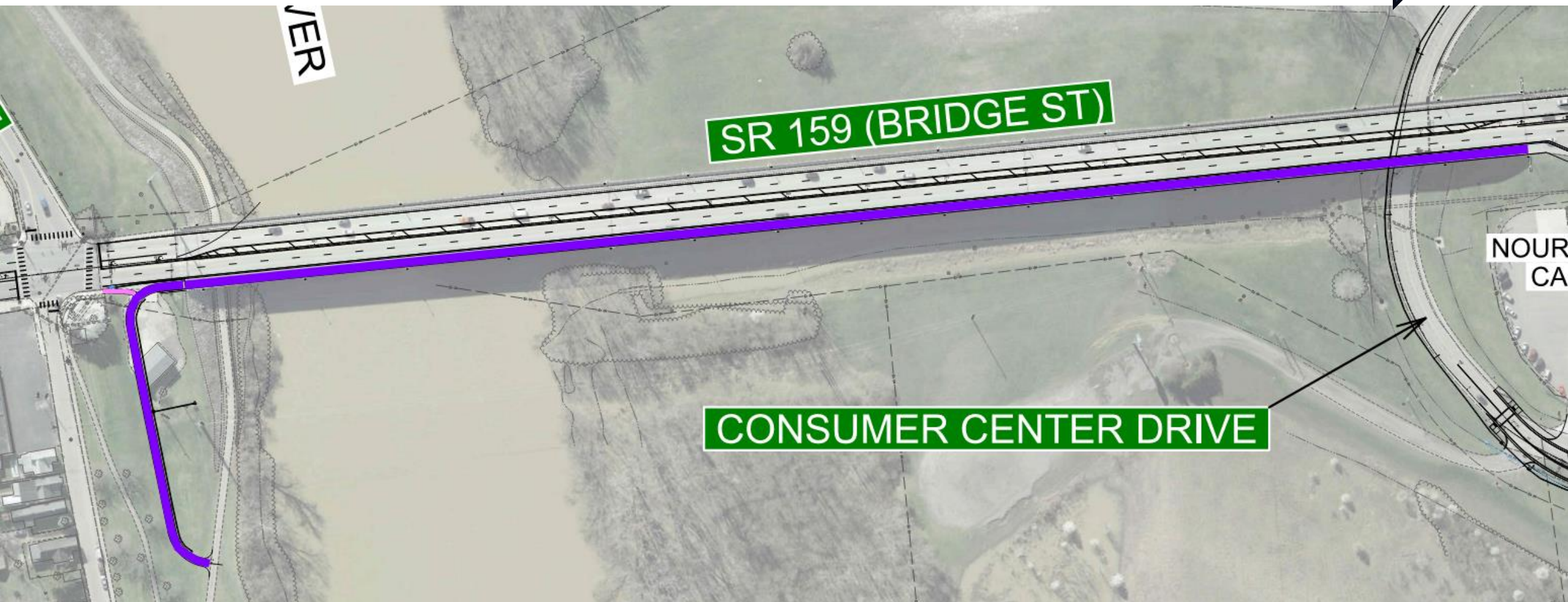


PEDESTRIAN FACILITIES

 - Sidewalk

 - Shared Use Path

North

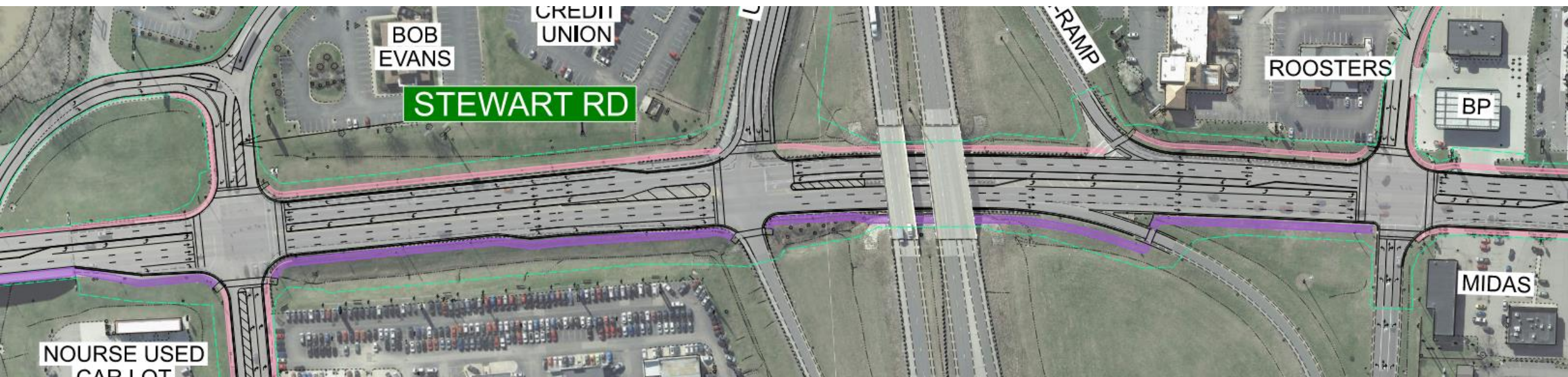


PEDESTRIAN FACILITIES

 - Sidewalk

 - Shared Use Path

North

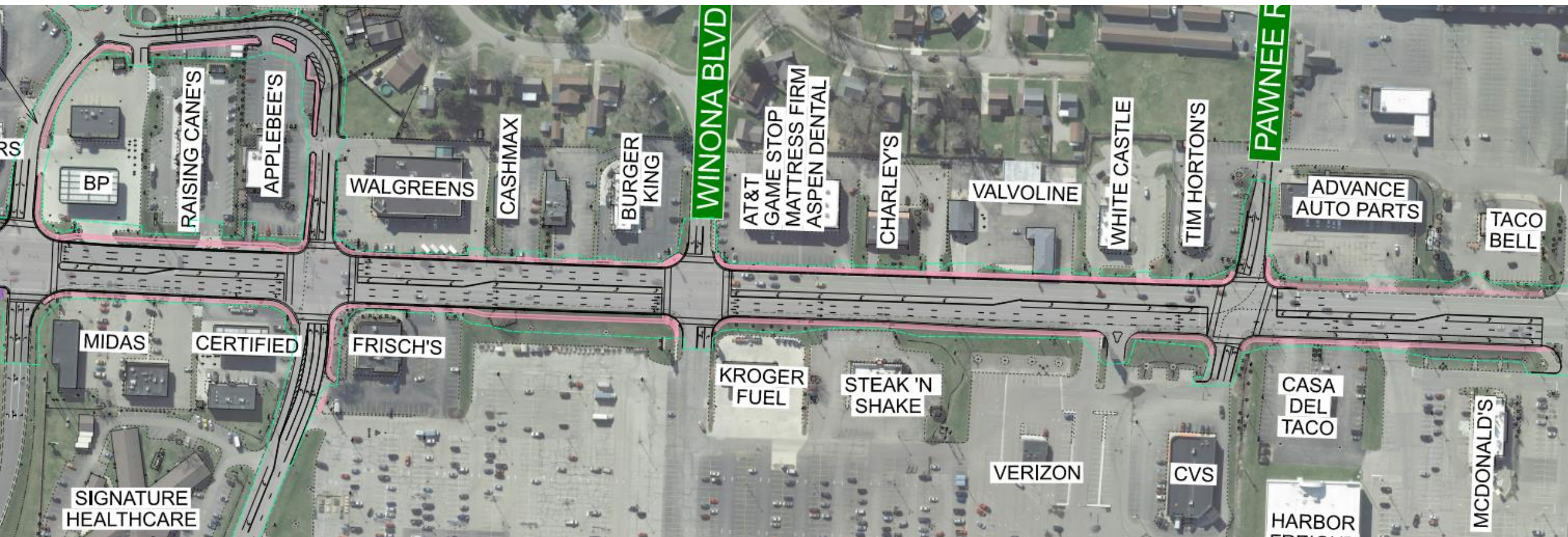


PEDESTRIAN FACILITIES

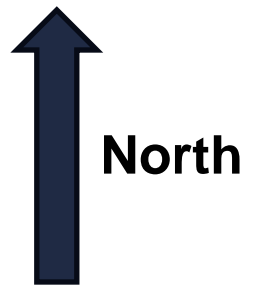
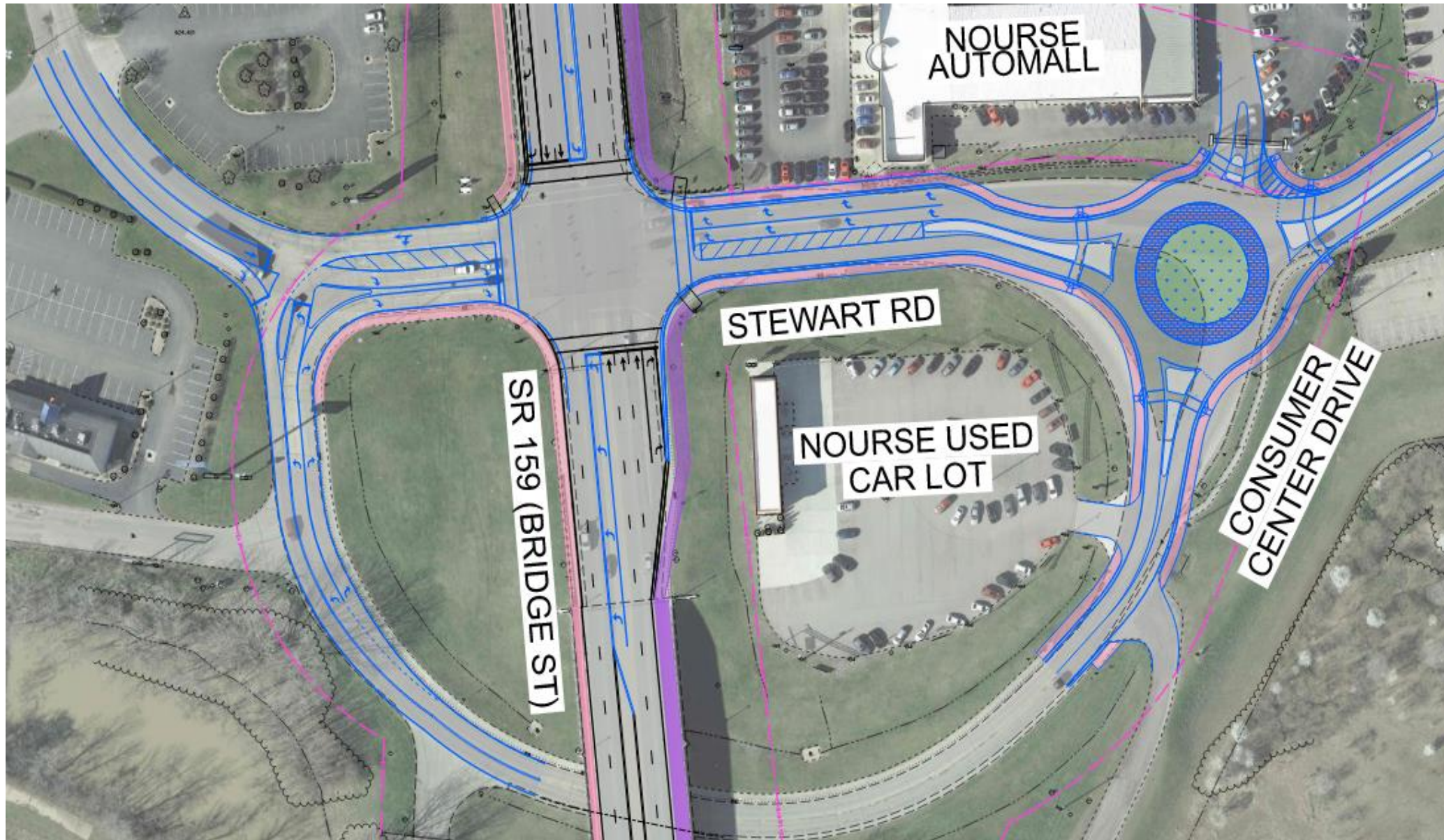
 - Sidewalk

 - Shared Use Path

North



BRIDGE ST. / STEWART RD. / CONSUMER CENTER DR.



US 35 EASTBOUND EXIT RAMP TO BRIDGE STREET



orth



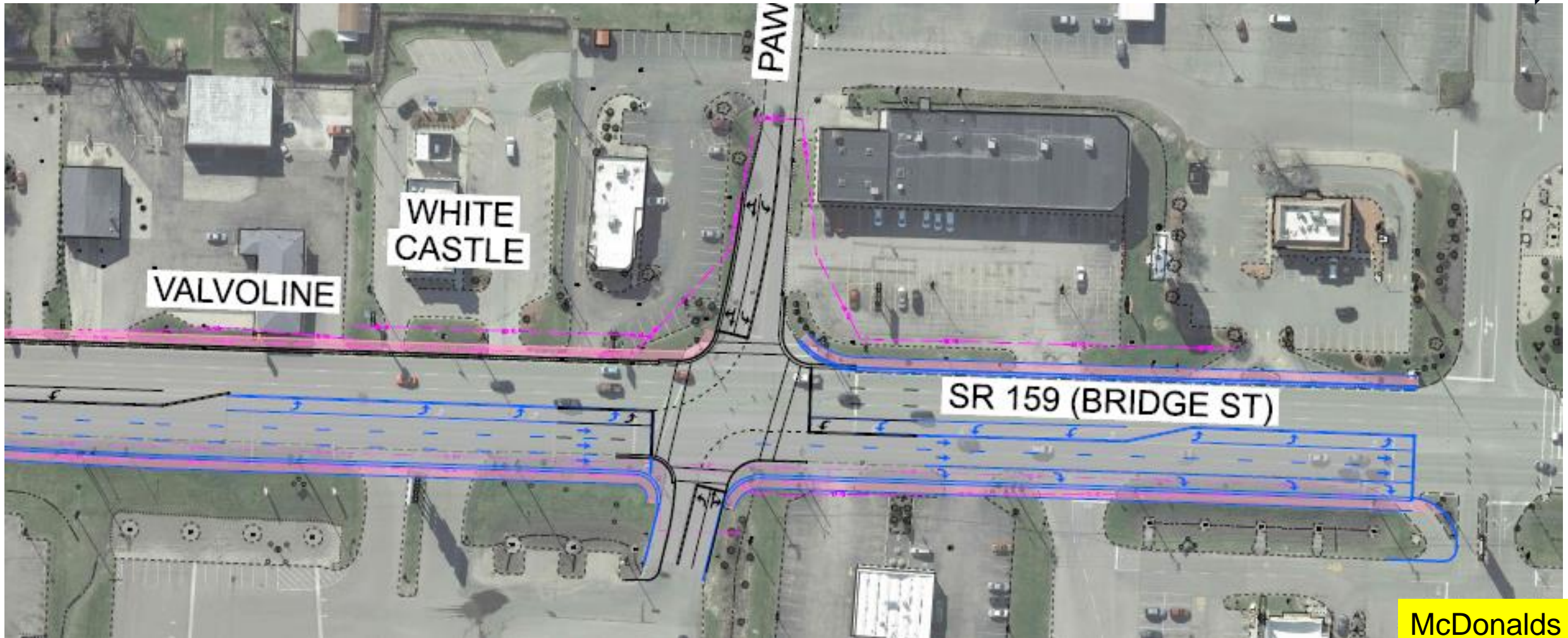
North

HOMELAND
CREDIT UN

ADDITIONAL NORTHBOUND LANE ON BRIDGE STREET

Ends at Chillicothe Mall entrance, north of Pawnee Rd.

North



AESTHETICS



AESTHETICS

Retaining walls with pattern and color to match
Large Block retaining wall under US 35 bridge



Black steel fence



AESTHETICS

Pocket Park (3 variations)



Large Block retaining wall under US 35 bridge



UNIQUE ITEMS AND PROJECT WORK

1. Full-depth concrete pavement replacement at interchange and ramps
2. Add concrete shared use path on bridge, new scuppers thru deck
3. Asphalt pavement - full depth and mill/fill
4. Construction of retaining walls, cast in place concrete (2) and large modular block
5. Storm sewer pipe, curb and gutter, culverts, BMP structures (manufactured and infiltration)
6. Lighting, signage, traffic signals, pavement striping, fencing, Queue Detection and flush plan
7. Wavetronics, pre-emption and Centrac's for signal coordination
8. All new business drive entrances - concrete (many right-in/right-out)
9. Material Only Contract-Signal and Light Poles - Special Provision via Addendum - Highway contractor receives delivery of poles in Chillicothe & arranges unloading - ready mid March 2025.

ENVIRONMENTAL

- Special Provision - ACOE Section 408 permit for working near floodwall to construct bikepath
- Area cleared within construction limits and available for material laydown and access under bridge



REAL ESTATE & UTILITIES

1. Temporary access drive relocation for roundabout construction for Nourse Auto sales
2. Lots of Business access/driveway construction, some with only one entrance, so this access needs maintained open. Contractor to perform close coordination with business owners on construction schedule and any impacts. Night work for driveway construction?? Construct in phases??
3. AEP negotiating easements for two parcels. May impact their relocation schedule.
4. Contractor to coordinate with AEP for maintaining power to signals and lighting. Keep one side of existing Bridge St lighting operating while building new lighting system.

STRUCTURES

- A. Add raised concrete shared use path (12'-9") to existing bridge, fill existing scuppers, add new scuppers
- B. US 35 bridges - modify scuppers and add downspouts below bridge
- C. Retaining Wall #1 - 307 ft - Prefabricated modular block - under US 35 bridge to create space for shared use path in the place of existing spill thru slope
- D. Retaining Wall #2 - Cast in Place w/ form liner - at Kroger Fuel
- E. Retaining Wall #3 - Cast in Place w/ form liner - at McDonalds



- Nov 2021

© 2022 Google

© 2022 Google

US 35

35 WEST
Washington CH

↑↑

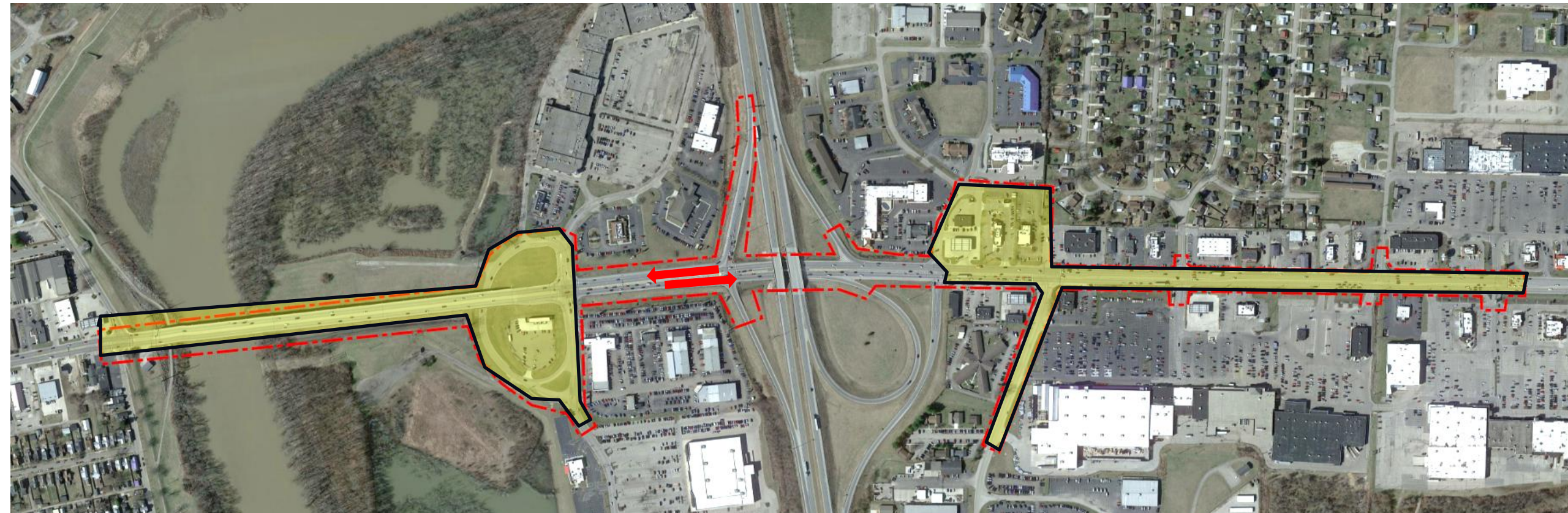
N Bridge St



Smart Supercenter

MOT & INTERIM COMPLETION DATES

- MOT - Phase 1, 2, & 3 - first year
 - Maintain traffic through interchange in both directions
 - Interim Completion - Lanes open to traffic by 10/15/2025 with \$15k/day Disincentive



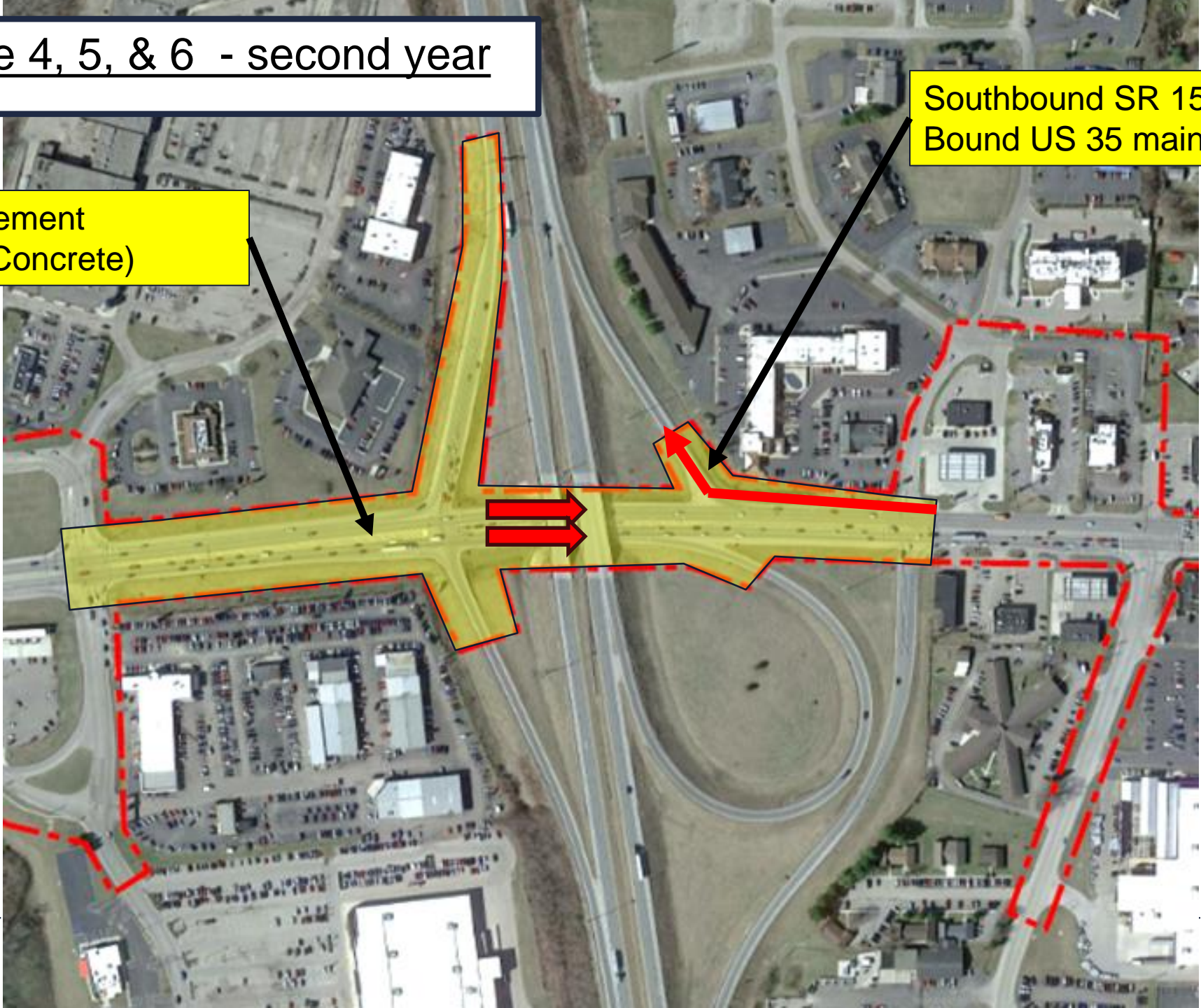
MOT & INTERIM COMPLETION DATES

- MOT - Phase 4, 5, & 6 - second year
 - Maintain traffic through interchange in *Northbound* direction only
 - Southbound detoured (except for west bound ramp to US 35)
 - Interim Completion - Lanes open to traffic by 10/15/2026 with \$15k/day Disincentive

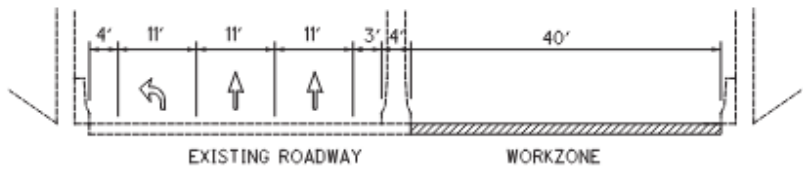
MOT – Phase 4, 5, & 6 - second year

Full-Depth Pavement Replacement (Concrete)

Southbound SR 159 to West Bound US 35 maintained



TYPICAL SECTION UNDER US 35



ROS-159-0.41 (PID 113013)

ROS-159 MOTAA ALTERNATIVE 5 - SB DETOURED

MOT PHASE 1 OF 2

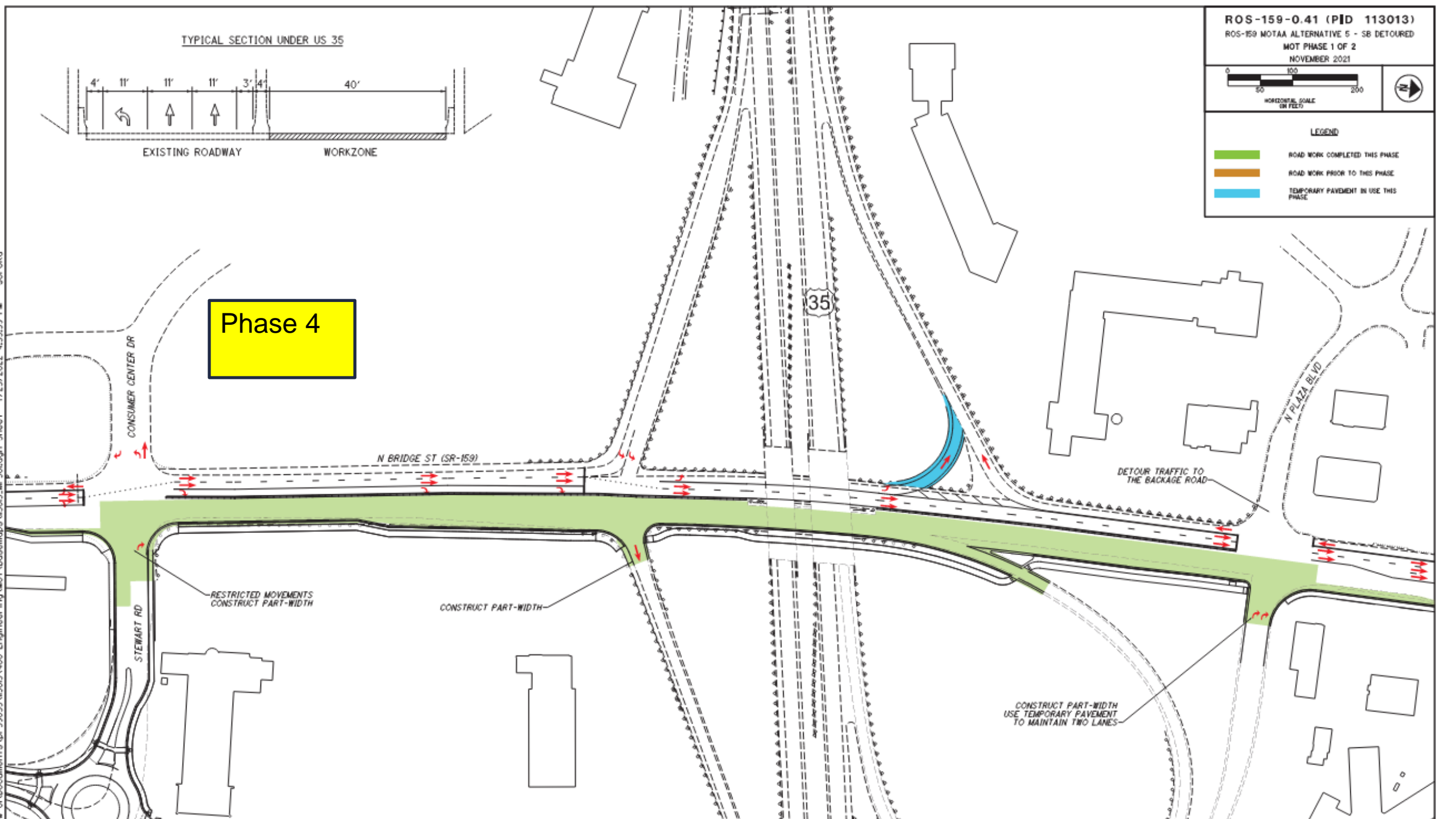
NOVEMBER 2021

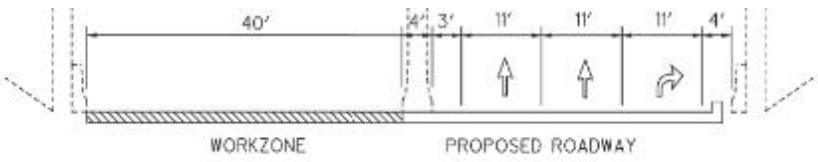


LEGEND

- ROAD WORK COMPLETED THIS PHASE
- ROAD WORK PRIOR TO THIS PHASE
- TEMPORARY PAVEMENT IN USE THIS PHASE

Phase 4





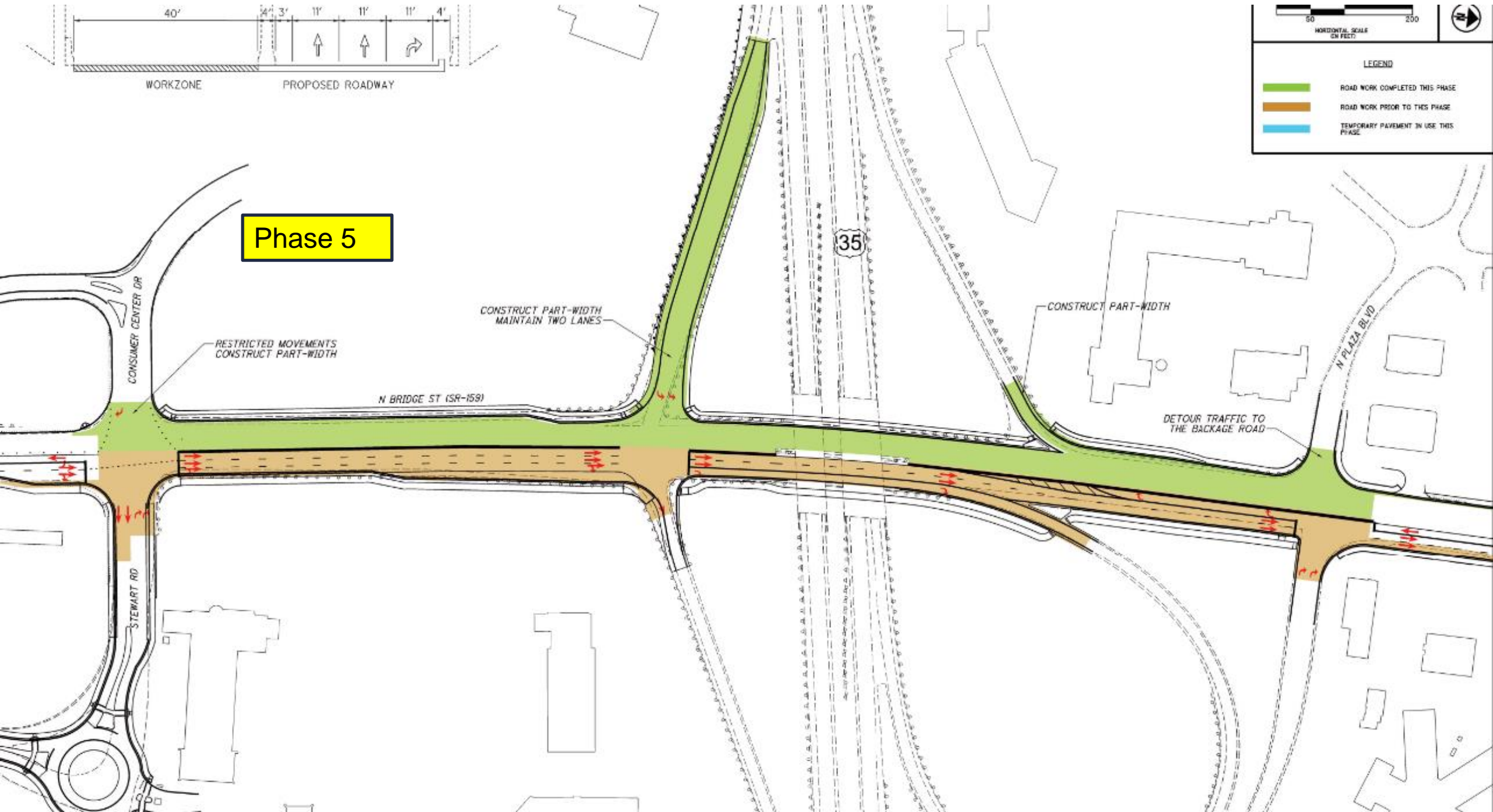
HORIZONTAL SCALE
IN FEET

50 200

LEGEND

- ROAD WORK COMPLETED THIS PHASE
- ROAD WORK PRIOR TO THIS PHASE
- TEMPORARY PAVEMENT IN USE THIS PHASE

Phase 5



SCHEDULE & MISC

- **Sale Date:** 2/13/2025
- **Award Date:** 2/24/2025
- **Construction End:** 7/2/2027
- **Signal and Light poles (most, not all)** - available for delivery March 2025
- **DBE goal- 8%**
- **CPM Progress Schedule**
- **Dispute Resolution Advisor** - to be added by Addendum
- **Alternate Bid** - Stamped and Stained Concrete for Roundabout

QUESTIONS ???

Please state your Name and Company prior to asking question.



Tom Barnitz, P.E.

tom.barnitz@dot.ohio.gov

740.774.8877