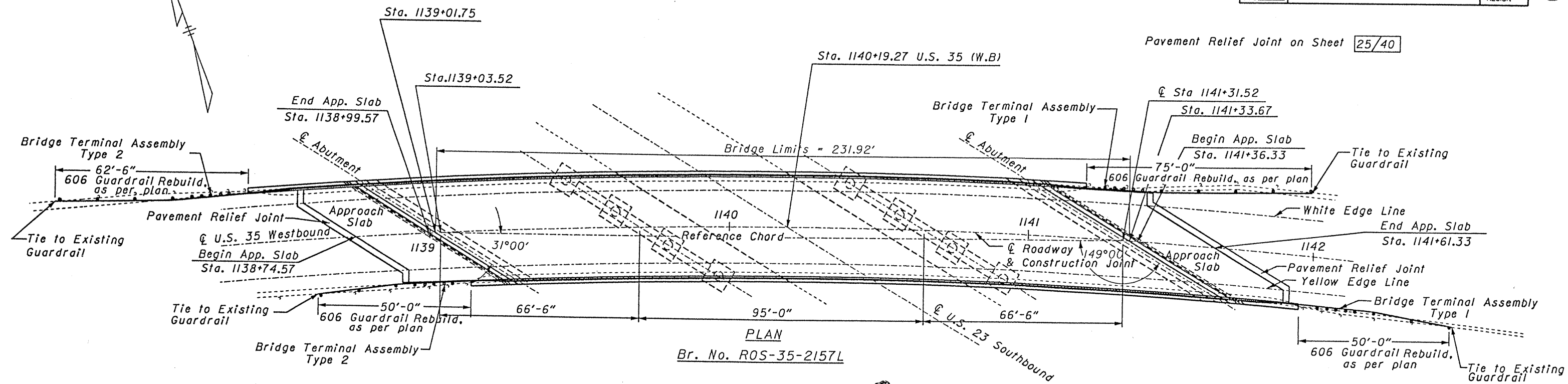


CALC BY: G.E.C.
 DATE: 1/11/84
 CHD BY: N.L.H.
 DATE: 4-21-84

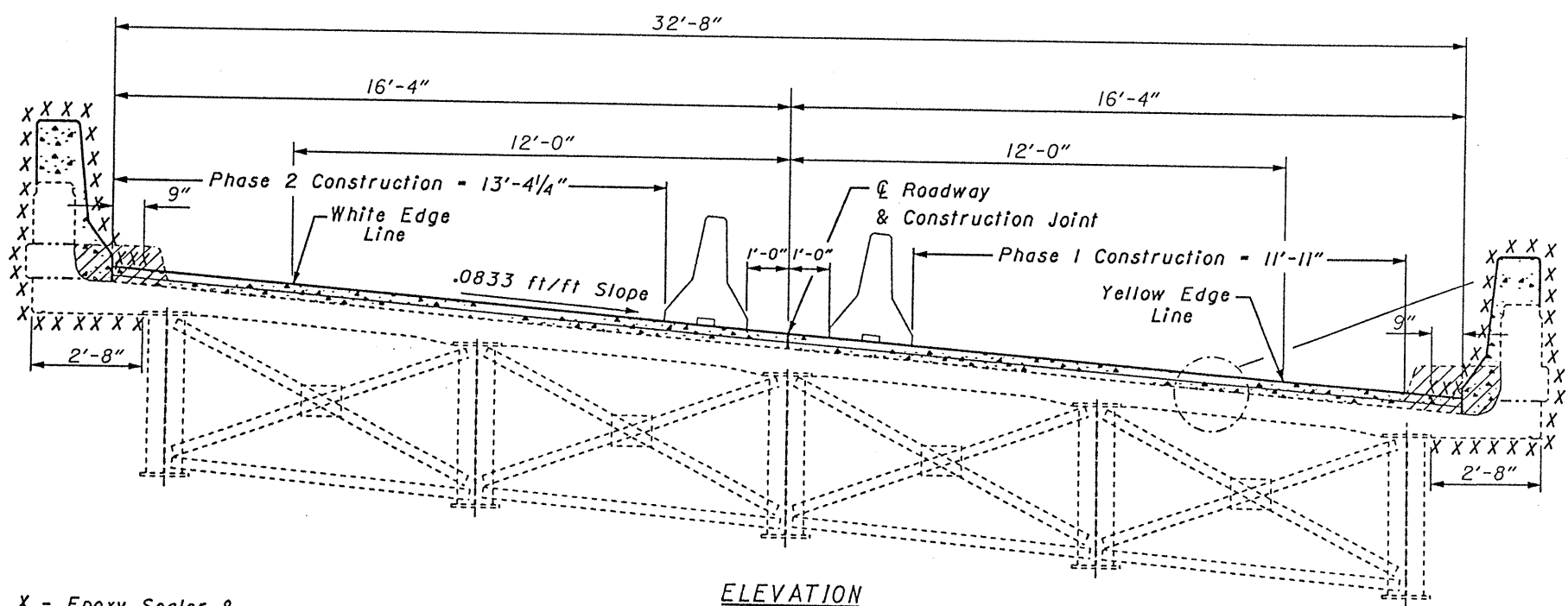
ROS-35-2157L

OHIO
 FHWA REGION 5
 30
 40

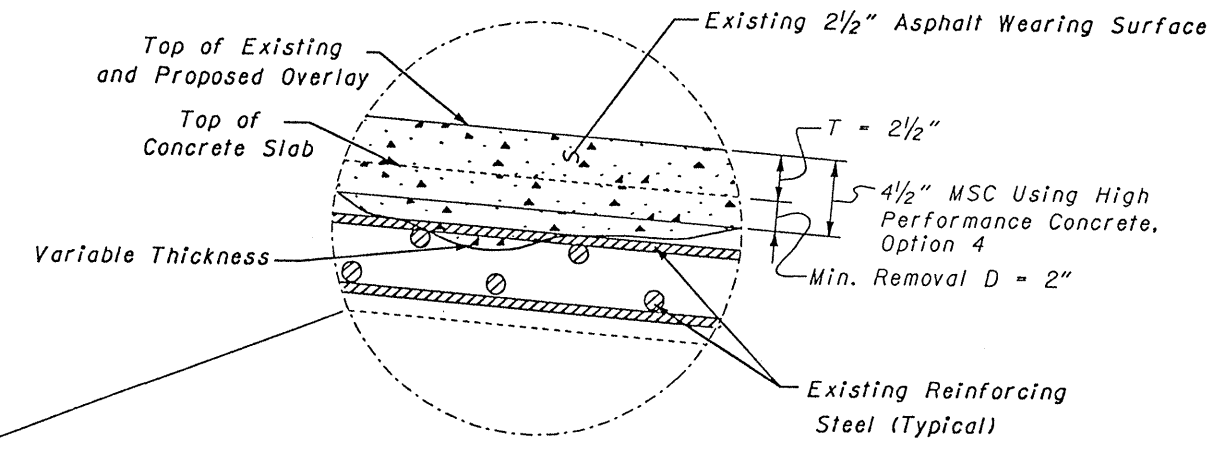
Pavement Relief Joint on Sheet 25/40



PLAN
 Br. No. ROS-35-2157L



ELEVATION
 Br. No. ROS-35-2157L



X - Epoxy Sealer & Urethane Topcoat

STATE OF OHIO DEPARTMENT OF TRANSPORTATION DISTRICT 9 OFFICE						30/40
GENERAL PLAN & ELEVATION Br. No. ROS-35-2157L U.S.R. 35 W.B. over U.S.R. 23 S.B.						
DESIGNED BY	DRAWN BY	PLOTTED BY	CHECKED BY	REVIEWED BY	DATE	REVISED
G.E.C.	G.E.C.	INTERGRAPH CAD	N.L.H.	Thomas C. White	8/4/94	

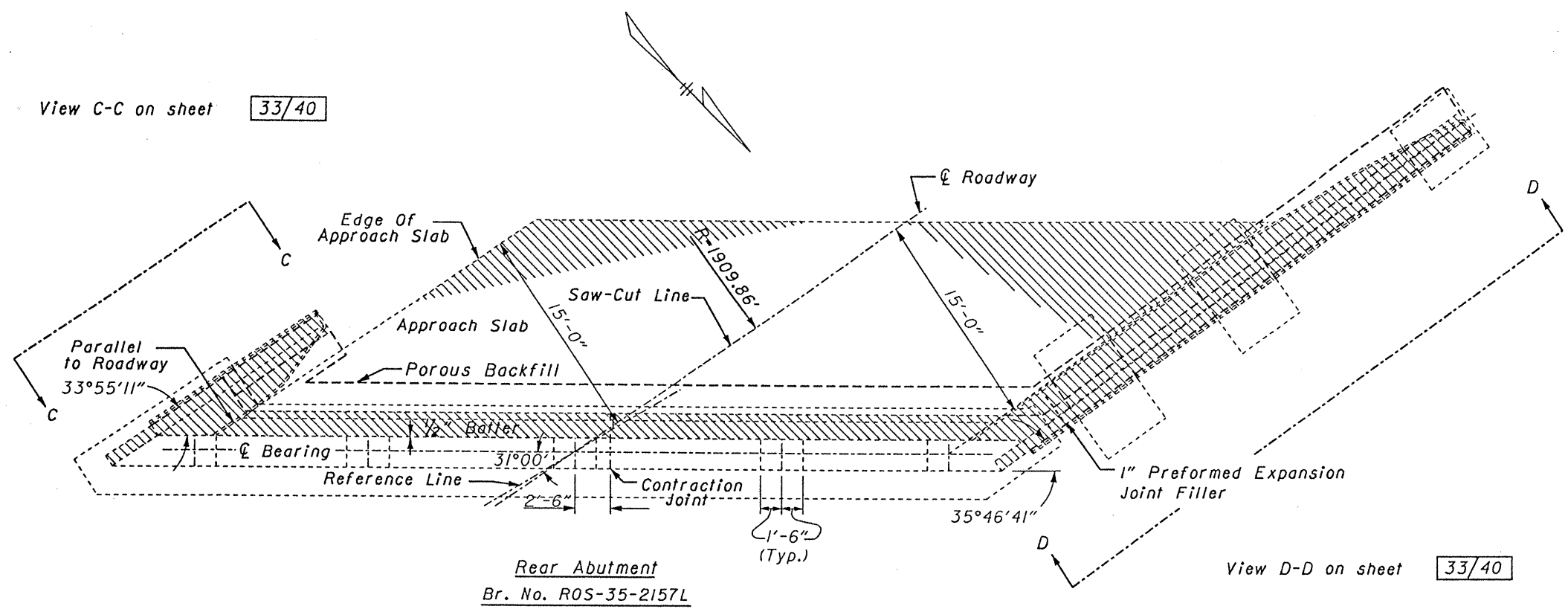
CALC BY G.E.C.
 DATE 1/14/84
 CHKD BY N.L.H.
 DATE 4-21-84

ROS-35-2157L

OHIO
 FHWA REGION 5

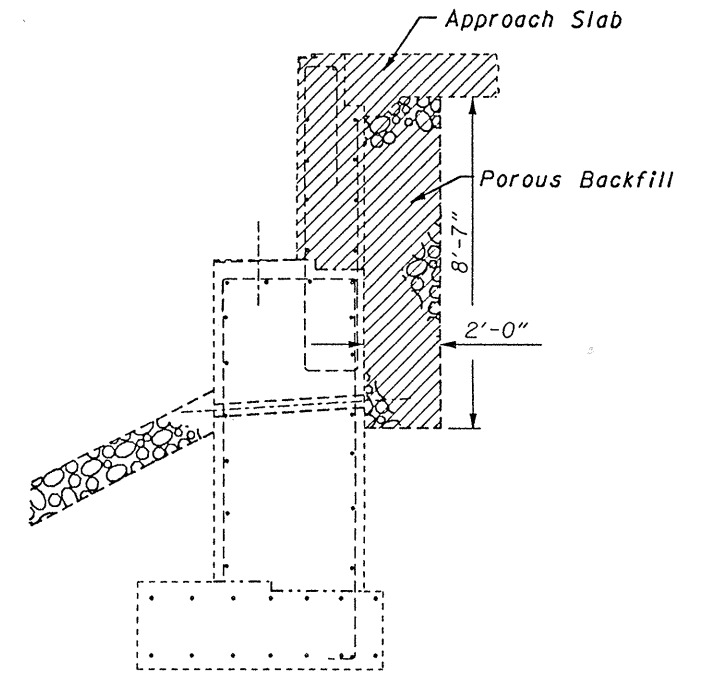
31
 40

View C-C on sheet 33/40



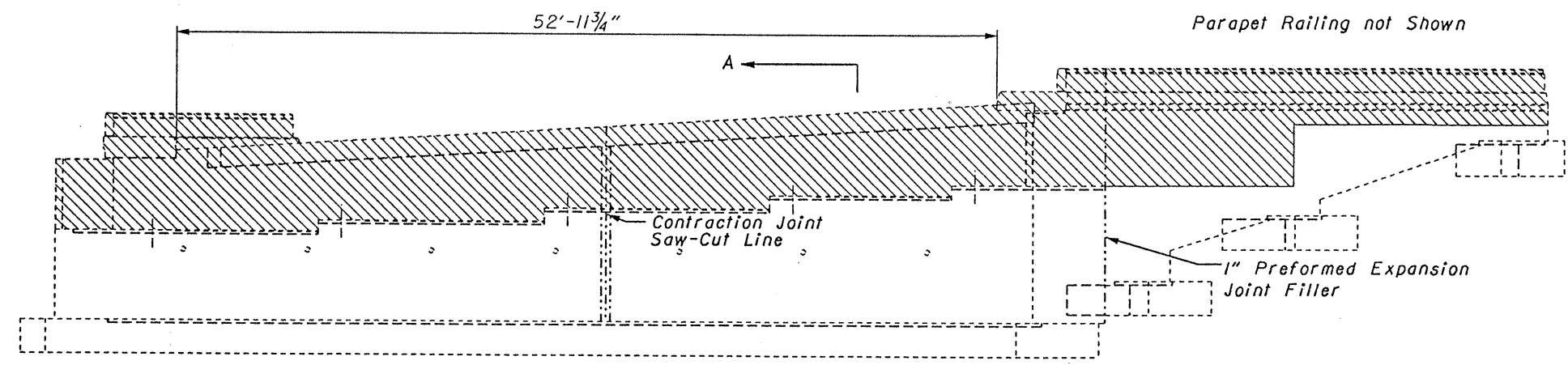
Rear Abutment
 Br. No. ROS-35-2157L

View D-D on sheet 33/40



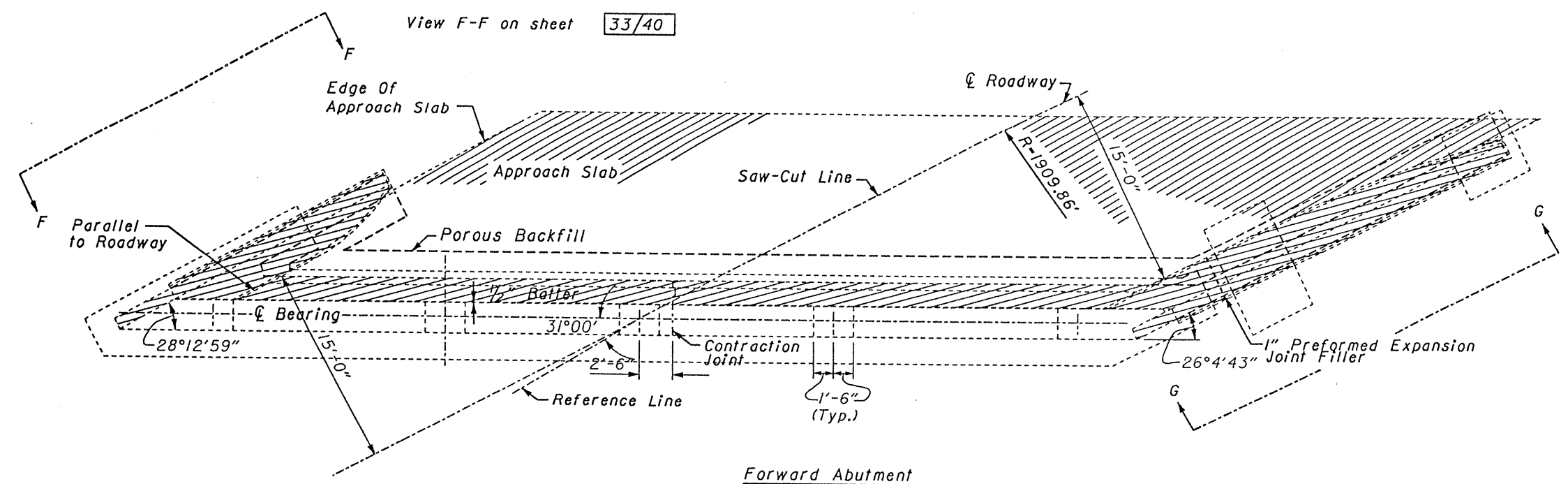
Section A-A

Removal Areas



Rear Abutment
 Br. No. ROS-35-2157L

STATE OF OHIO DEPARTMENT OF TRANSPORTATION DISTRICT 9 OFFICE							31/40
Removal Details Rear Abutment Br. No. ROS-35-2157L U.S.R. 35 W.B. over U.S.R. 23 S.B.							
DESIGNED	DRAWN	PLOTTED	CHECKED	REVIEWED	DATE	REVISED	
G.E.C.	G.E.C.	INTERGRAPH CADD	N.L.H.	<i>James Wells</i>	8/4/84		

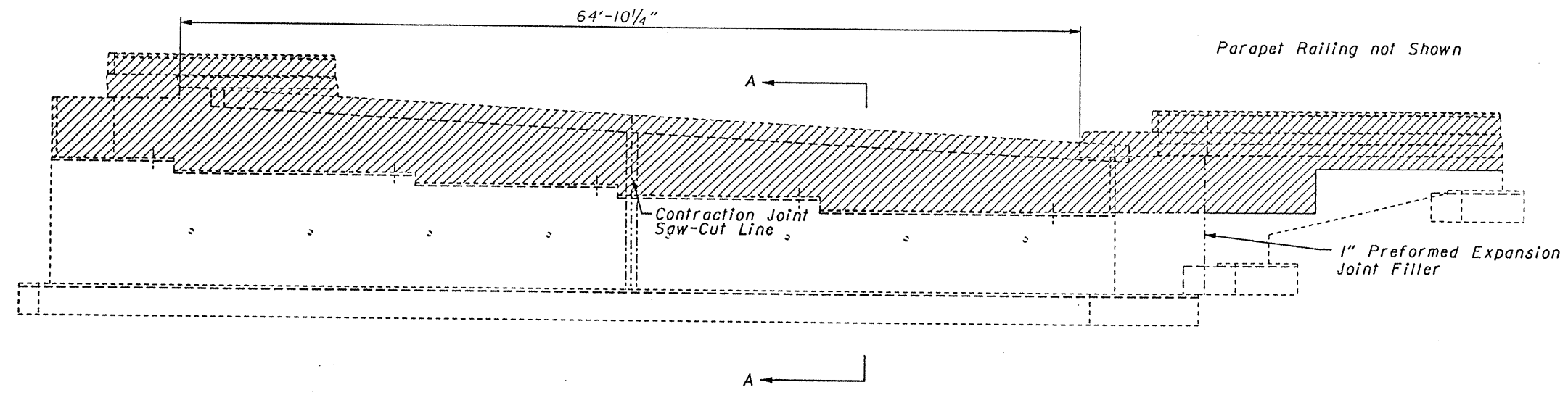


Forward Abutment
Br. No. ROS-35-2157L

View G-G on sheet 33/40

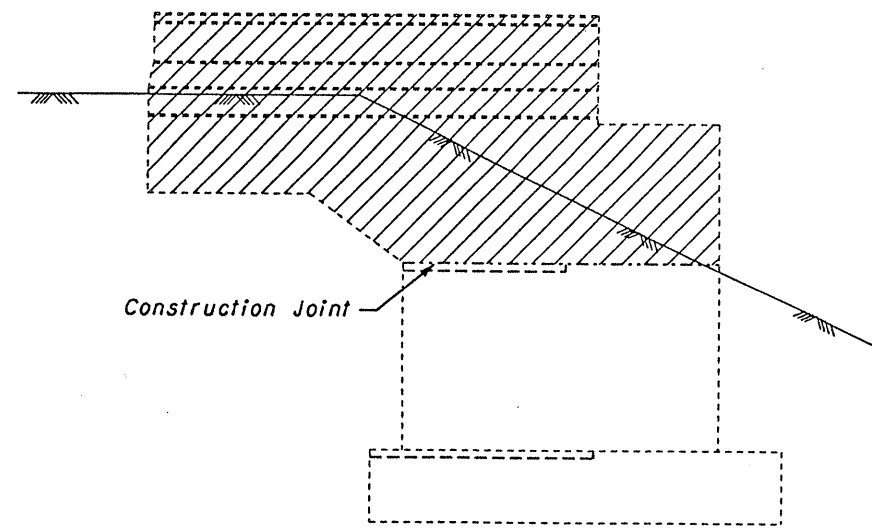
Removal Areas

Section A-A on sheet 31/40

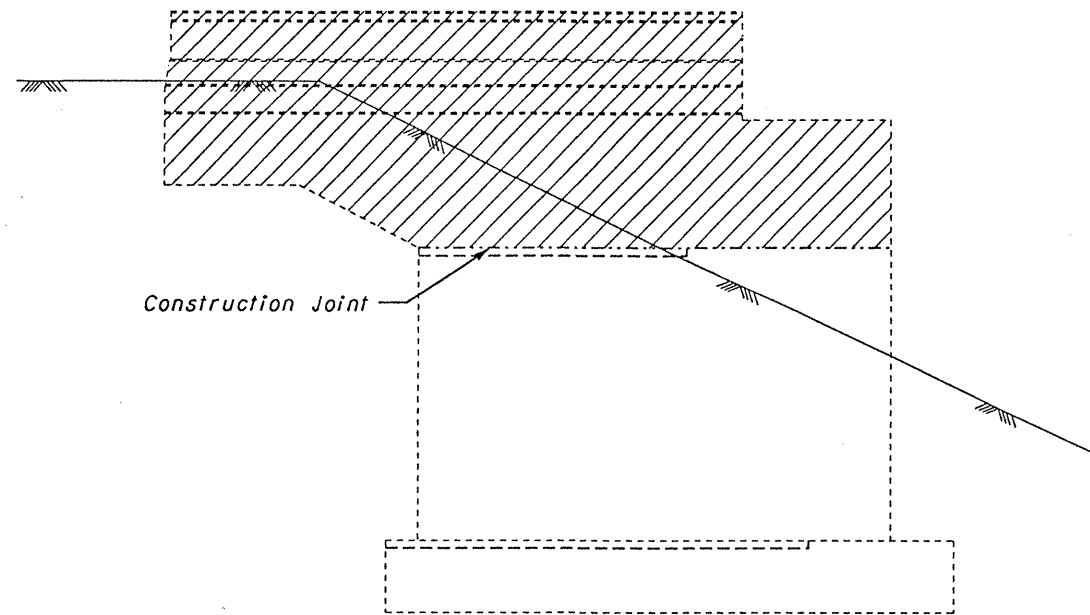


Forward Abutment
Br. No. ROS-35-2157L

STATE OF OHIO DEPARTMENT OF TRANSPORTATION DISTRICT 9 OFFICE						32/40
Removal Details Forward Abutment Br. No. ROS-35-2157L U.S.R. 35 W.B. over U.S.R. 23 S.B.						
DESIGNED	DRAWN	PLOTTED	CHECKED	REVIEWED	DATE	REVISED
G.E.C.	G.E.C.	INTERGRAPH CADD	N.L.H.	<i>[Signature]</i>	04.94	

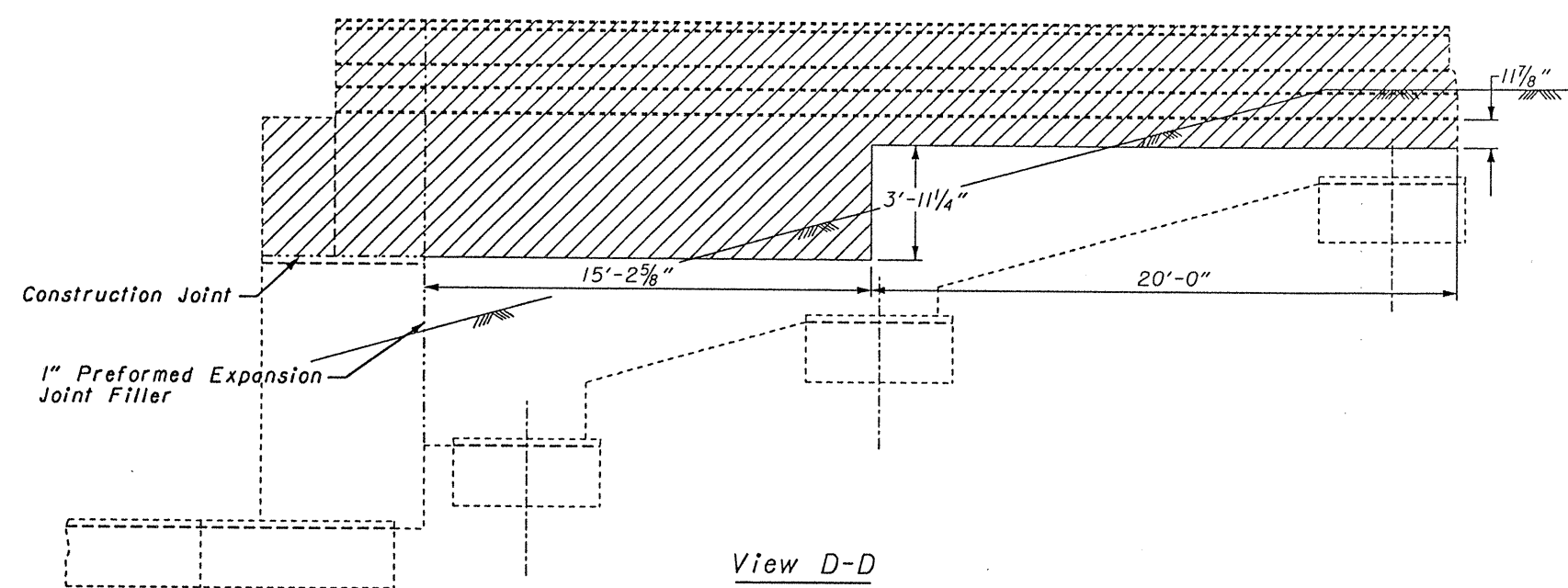


View C-C

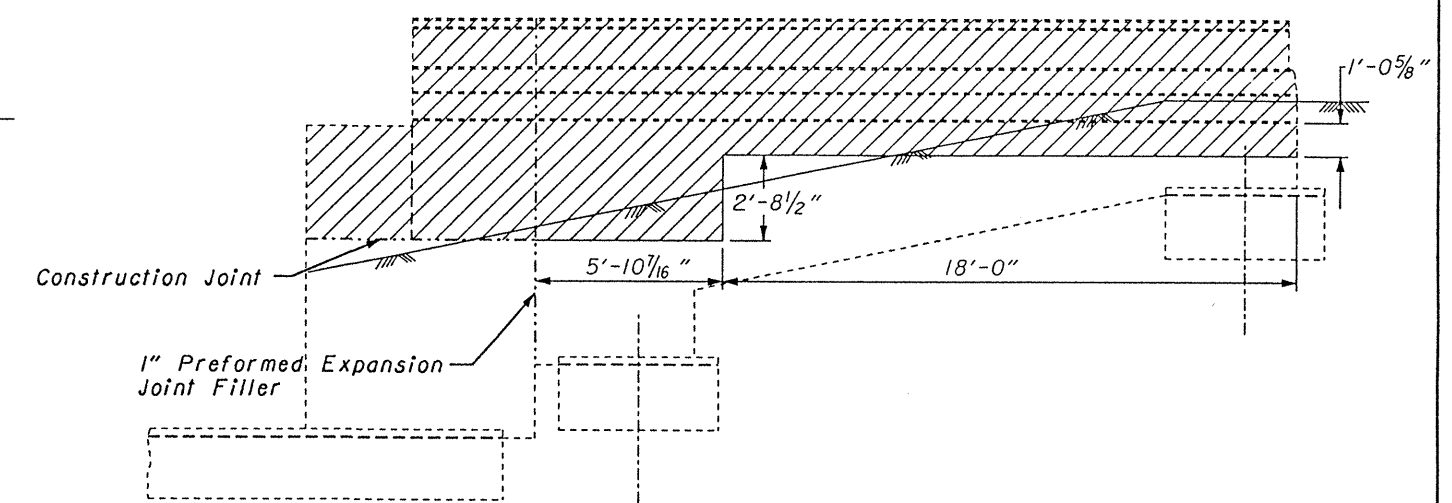


View F-F

 Removal Areas

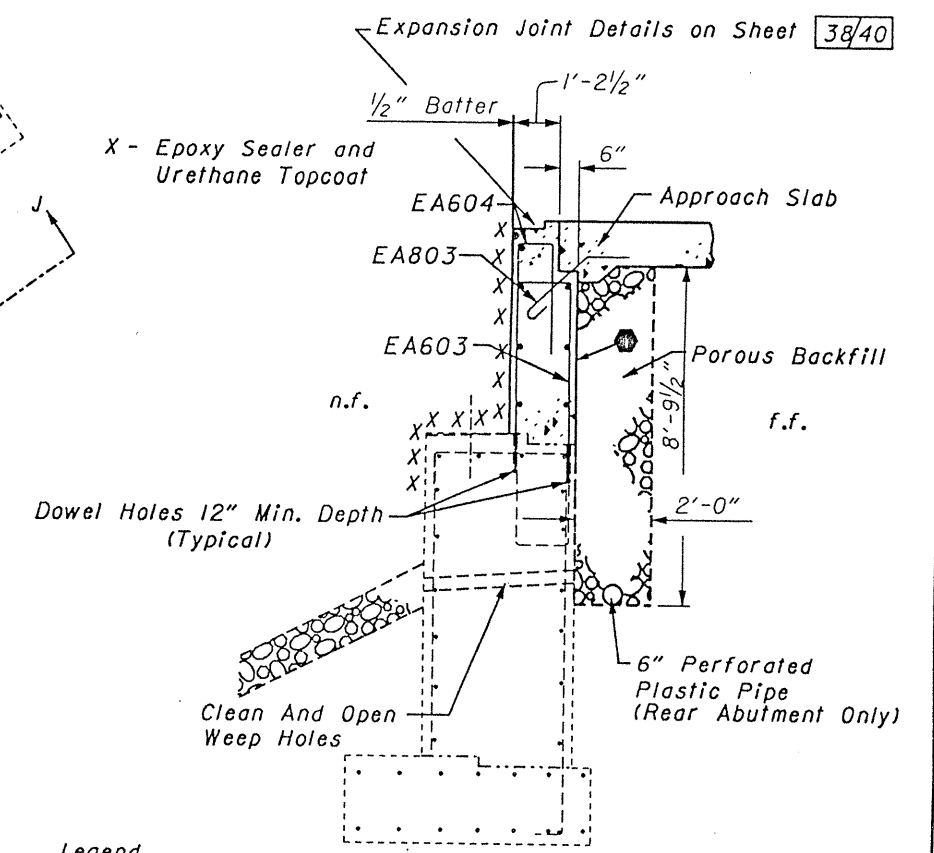
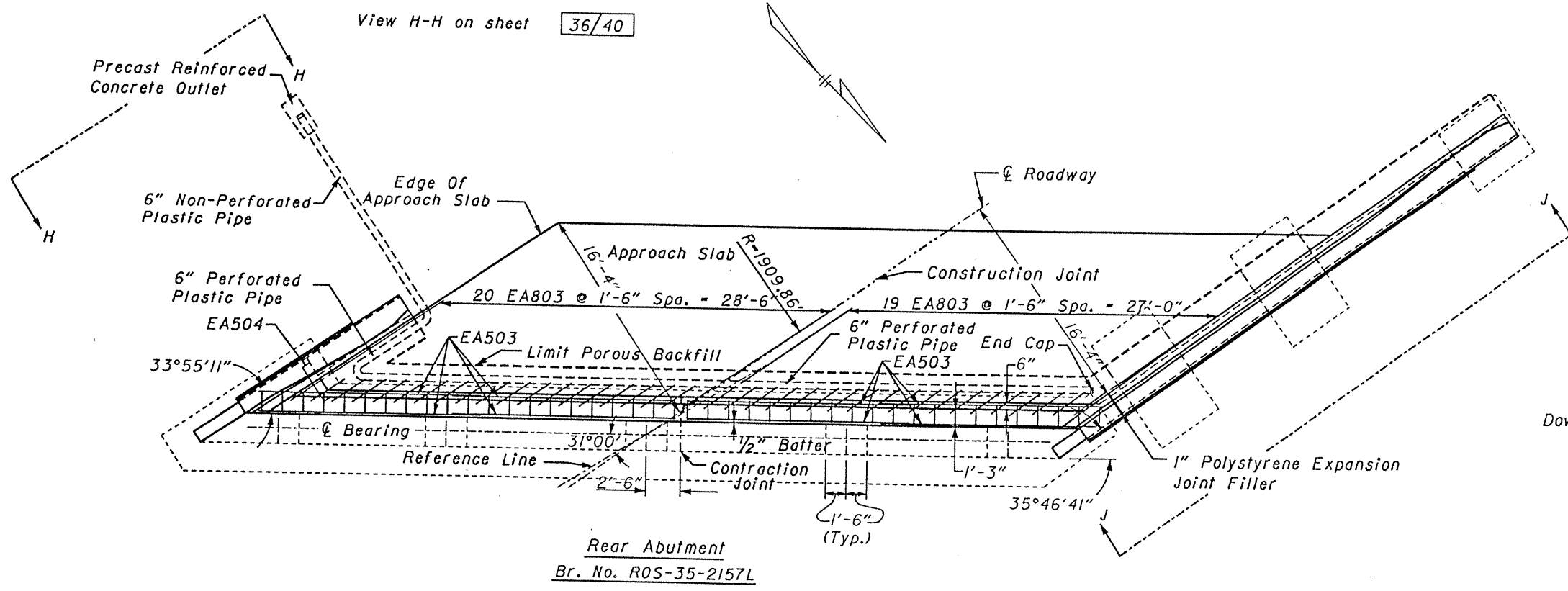


View D-D



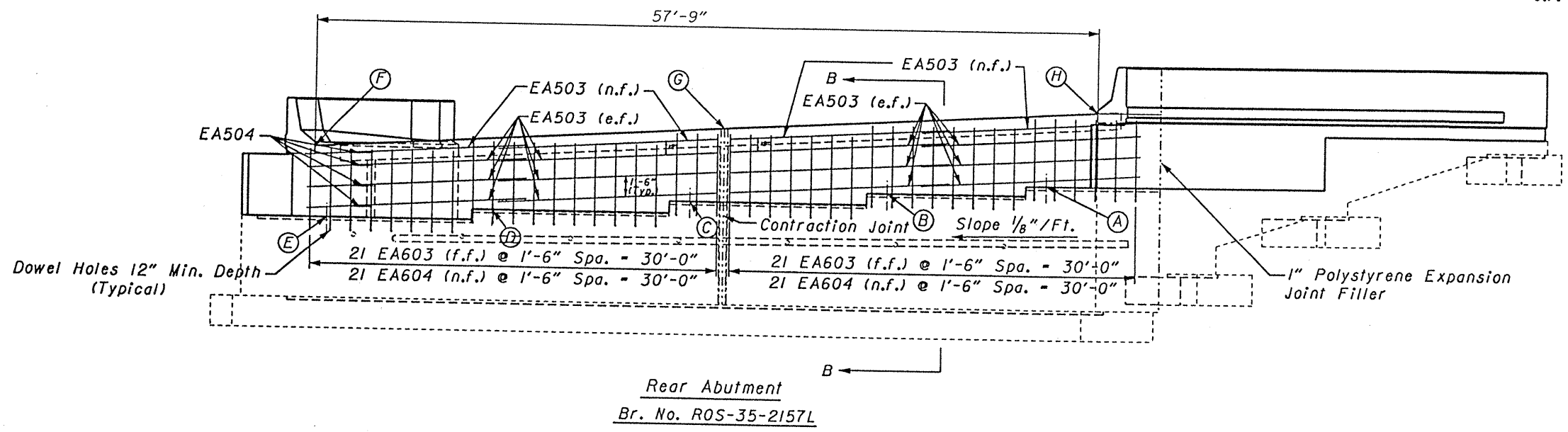
View G-G

STATE OF OHIO DEPARTMENT OF TRANSPORTATION DISTRICT 9 OFFICE					33/40
Wingwall Removal Details					
Br. No. ROS-35-2157L					
U.S.R. 35 W.B. over U.S.R. 23 S.B.					
DESIGNED G.E.C.	DRAWN G.E.C.	PLOTTED INTERGRAPH CADD	CHECKED N.L.H.	REVIEWED <i>[Signature]</i>	DATE 8.4.94



Legend
 f.f. far face
 n.f. near face
 e.f. each face

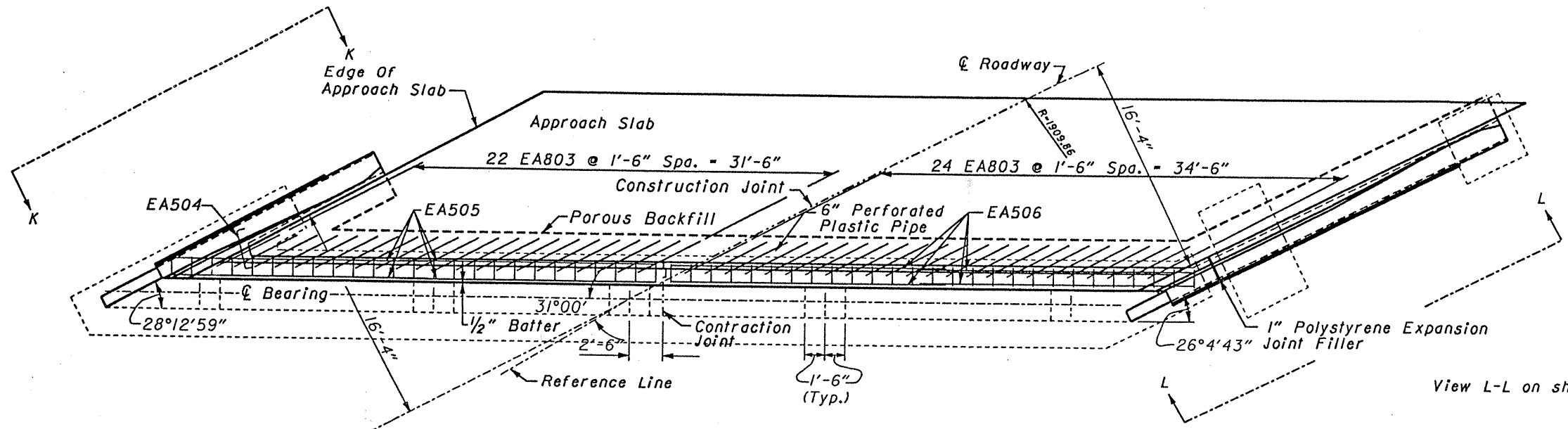
Section B-B
 * - Sheet Type 2 Membrane Waterproofing Full Length of Abutment & Wingwalls by 8'-9 1/2" High



A	646.93	E	643.86
B	646.23	F	649.09*
C	645.37	G	650.82*
D	644.52	H	652.45*

* - Elevations are along face of Backwall

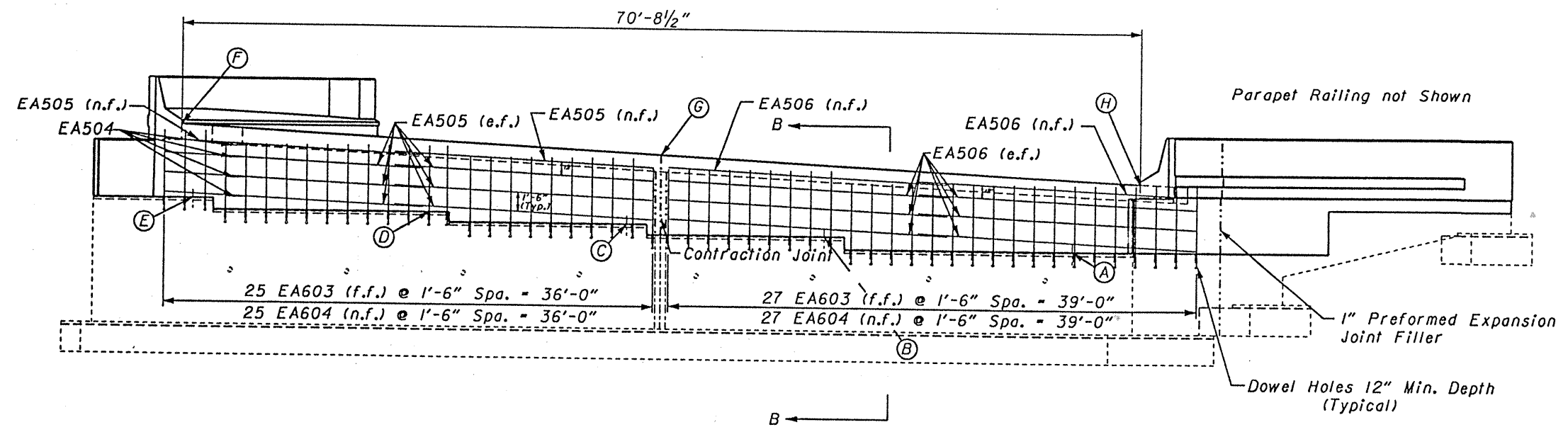
STATE OF OHIO DEPARTMENT OF TRANSPORTATION DISTRICT 9 OFFICE		34/40
Proposed Rear Abutment Br. No. ROS-35-2157L U.S.R. 35 W.B. over U.S.R. 23 S.B.		
DESIGNED BY G.E.C.	DRAWN BY G.E.C.	INTERGRAPH CADD
CHECKED BY N.L.H.	REVIEWED BY H. J. ...	DATE 4.94



View L-L on sheet 37/40

Forward Abutment
Br. No. ROS-35-2157L

Legend
 f.f. far face
 n.f. near face
 e.f. each face



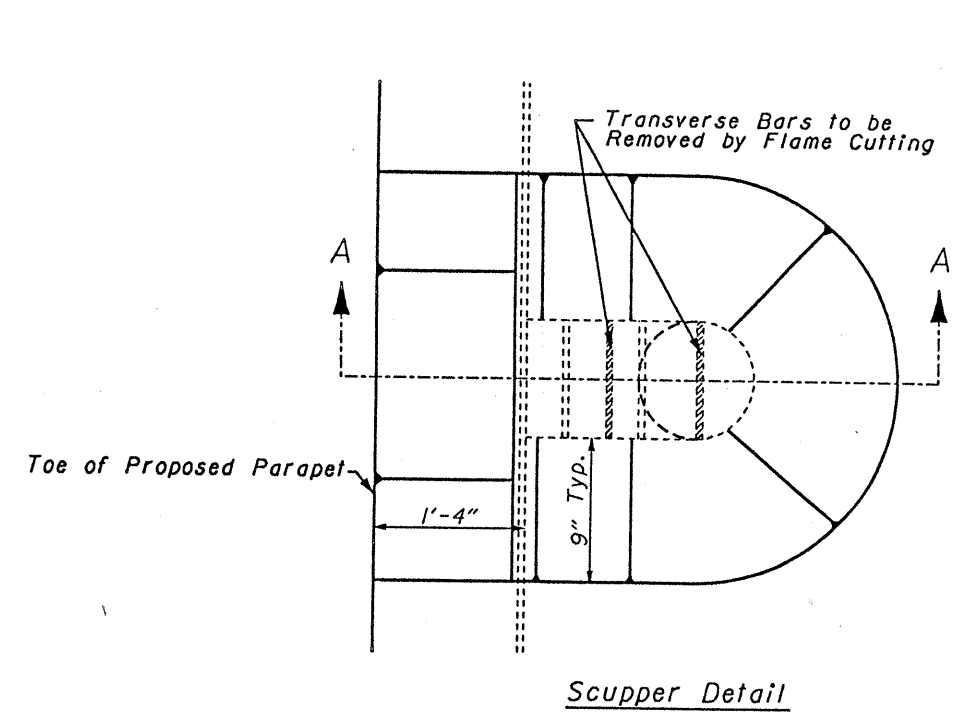
A	640.42	E	643.74
B	641.34	F	649.21 *
C	642.09	G	647.38 *
D	642.84	H	645.58 *

* - Elevations are along face of Backwall

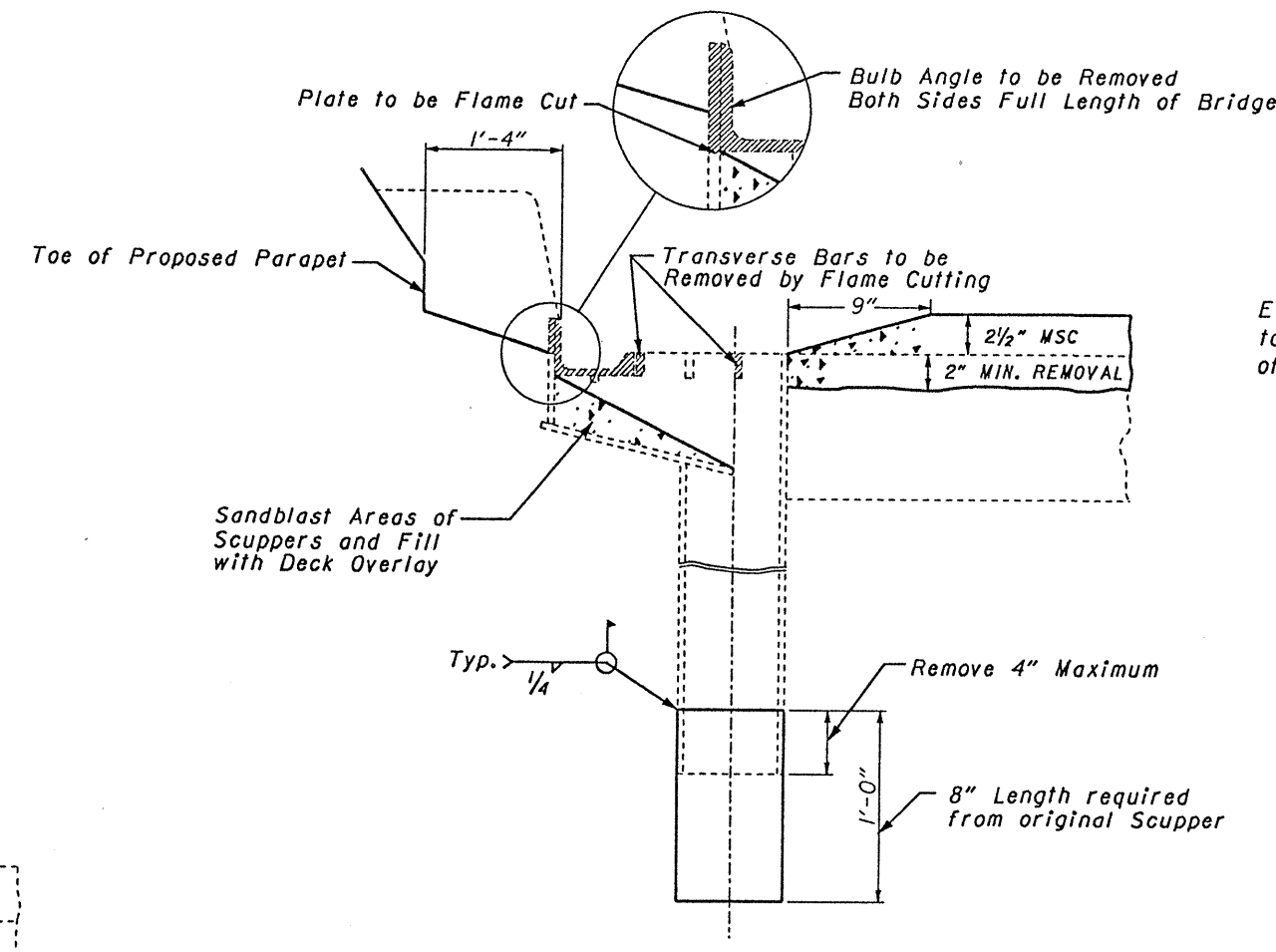
Section B-B on sheet 34/40

Forward Abutment
Br. No. ROS-35-2157L

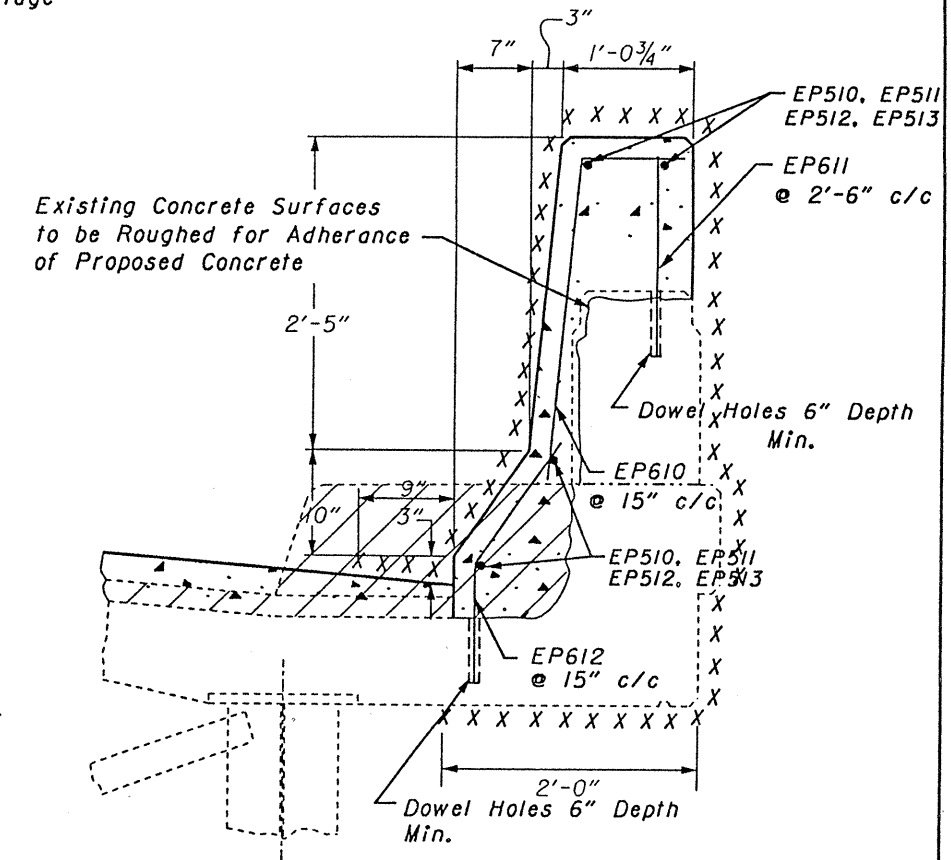
STATE OF OHIO DEPARTMENT OF TRANSPORTATION DISTRICT 9 OFFICE						35/40
Proposed Forward Abutment						
Br. No. ROS-35-2157L						
U.S.R. 35 W.B. over U.S.R. 23 S.B.						
DESIGNED	DRAWN	PLOTTED	CHECKED	REVIEWED	DATE	REVISED
G.E.C.	G.E.C.	INTERGRAPH CADD	N.L.H.	<i>James C. White</i>	8-4-34	



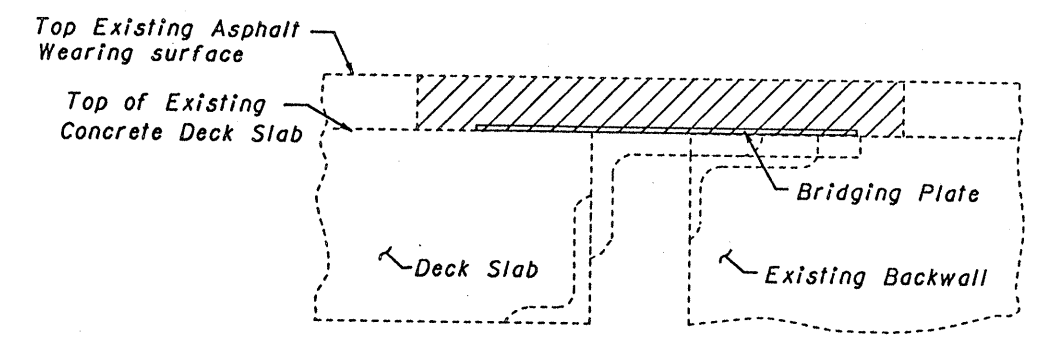
Scupper Detail



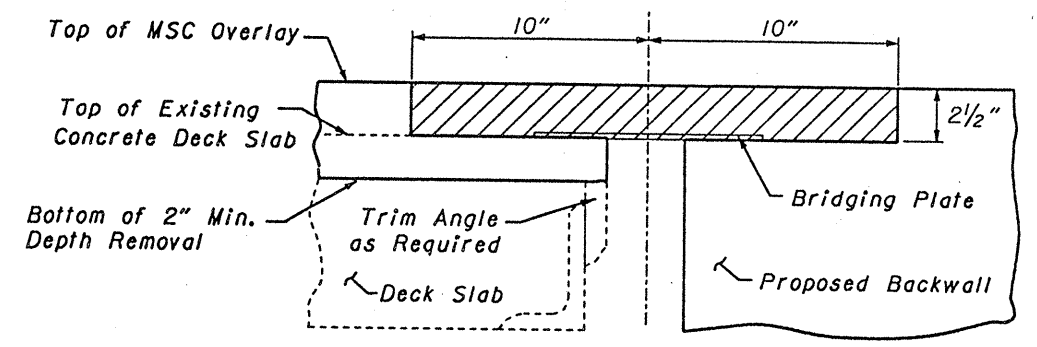
Section A-A



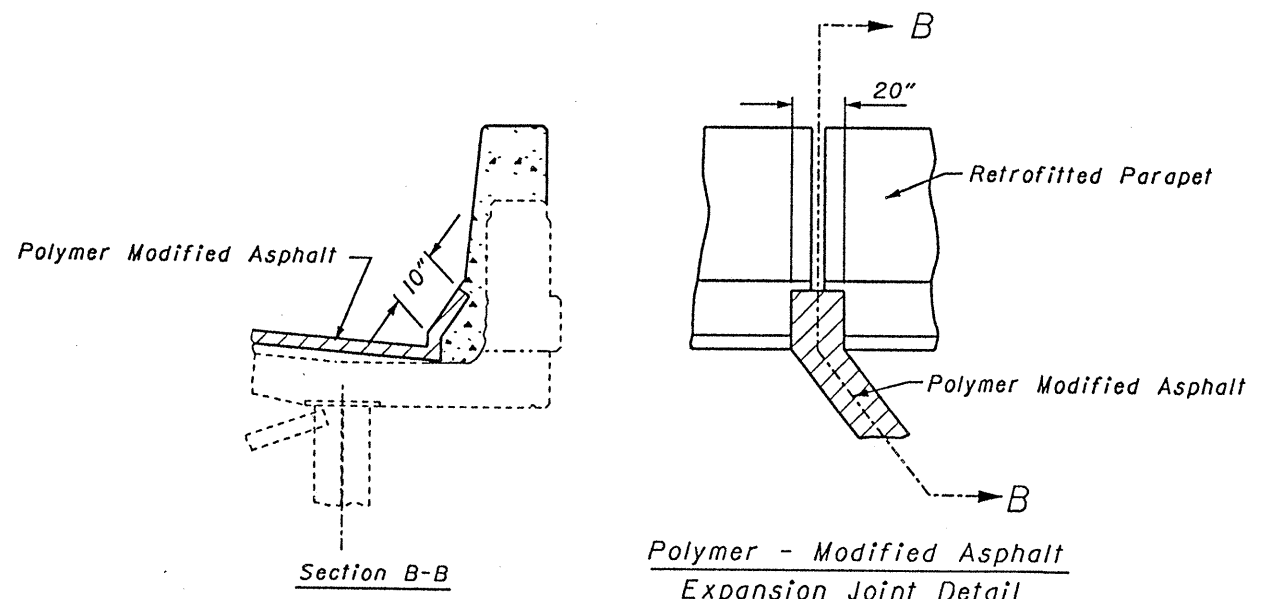
Parapet Facing Detail



Existing Expansion Joint



Proposed Expansion Joint



Section B-B

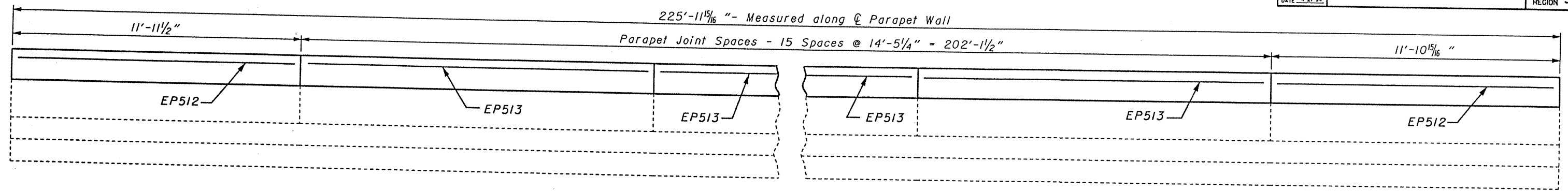
Polymer - Modified Asphalt Expansion Joint Detail

STATE OF OHIO
 DEPARTMENT OF TRANSPORTATION
 DISTRICT 9 OFFICE
 38/40

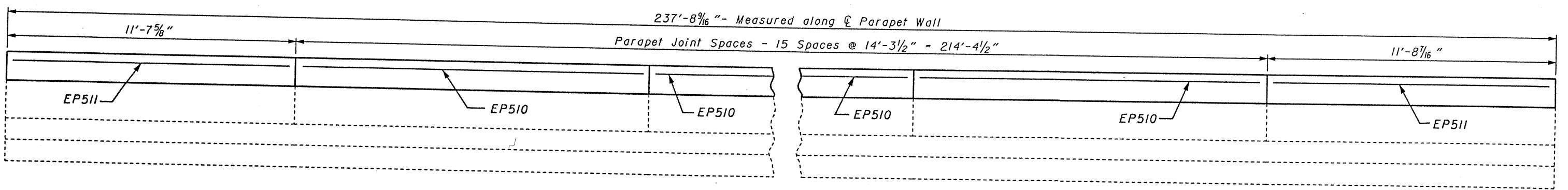
Expansion Joint, Scupper, and Parapet Details
 Br. No. ROS-35-2157L
 U.S.R. 35 W.B. over U.S.R. 23 S.B.

DESIGNED	DRAWN	PLOTTED	CHECKED	REVIEWED	DATE	REVISED
G.E.C.	G.E.C.	INTERGRAPH CAD	N.L.H.	<i>[Signature]</i>	84.94	

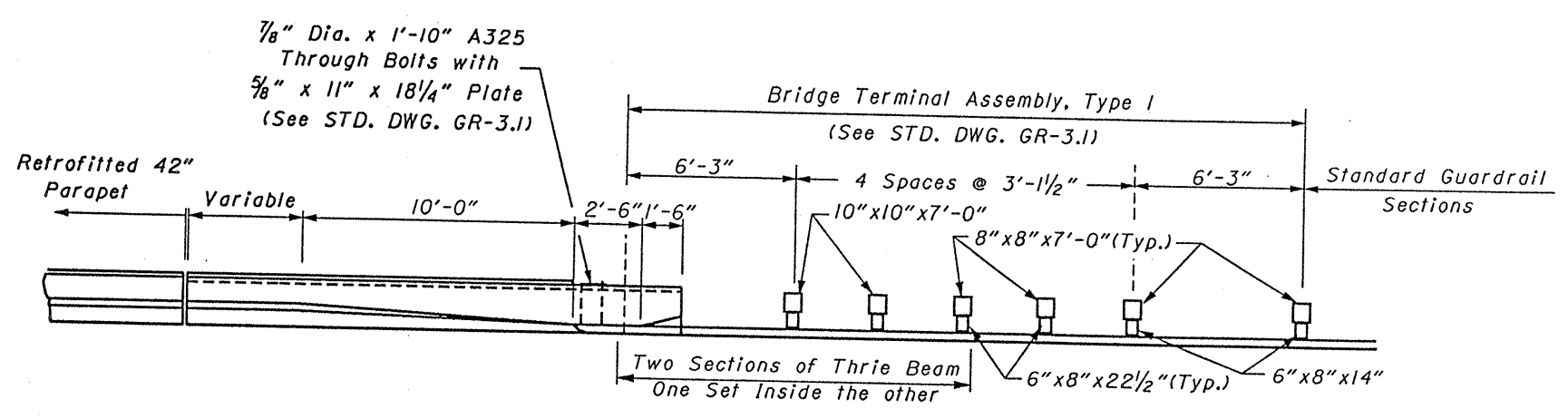
ROS-35-2157L



Parapet Joint Details - Left ϕ

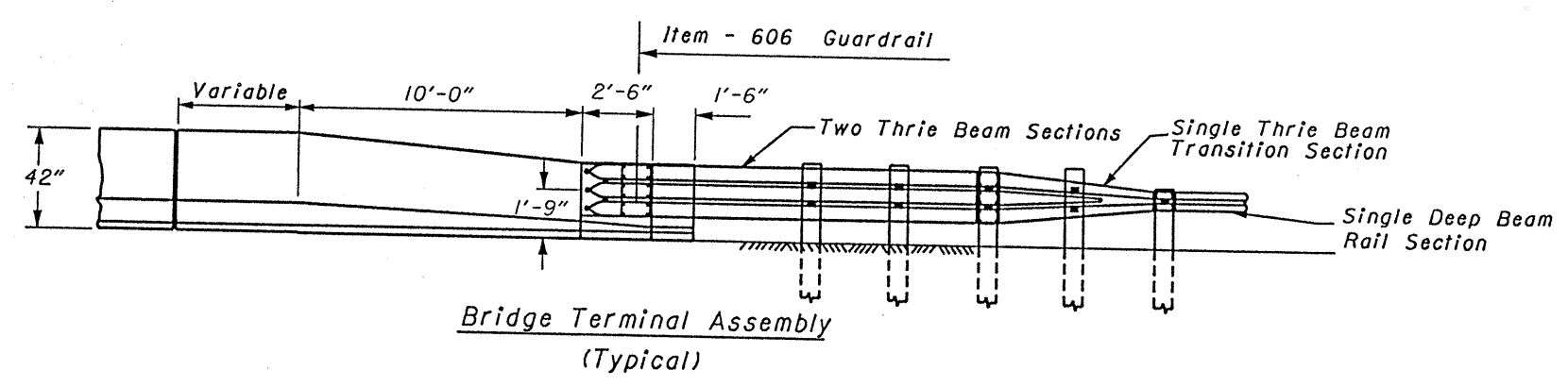
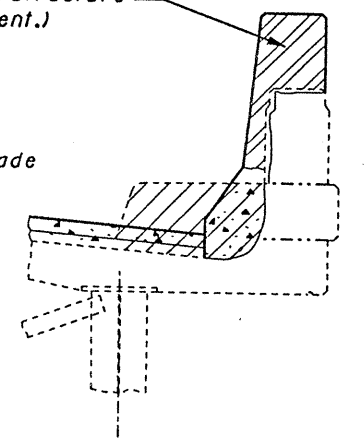


Parapet Joint Details - Right ϕ



1/4" Polystyrene Exp. Joint Filler. (Included with Superstructure Parapet Concrete for Payment.)

Existing deflection joints shall be extended through the proposed facing and shall be made by forming.



STATE OF OHIO DEPARTMENT OF TRANSPORTATION DISTRICT 9 OFFICE						39/40
Parapet Joint and Bridge Terminal Assembly Details						
Br. No. ROS-35-2157L						
U.S.R. 35 W.B. over U.S.R. 23 S.B.						
DESIGNED	DRAWN	PLOTTED	CHECKED	REVIEWED	DATE	REVISED
G.E.C.	G.E.C.	INTERGRAPH CADD	N.L.H.	<i>Thomas O'Neil</i>	5-4-94	

STEEL LIST

CALC BY G.E.C.
DATE 7-28-94
CHKD BY N.L.H.
DATE 4-21-94

ROS-35-2157L

OHIO
FHWA REGION 5

40
40

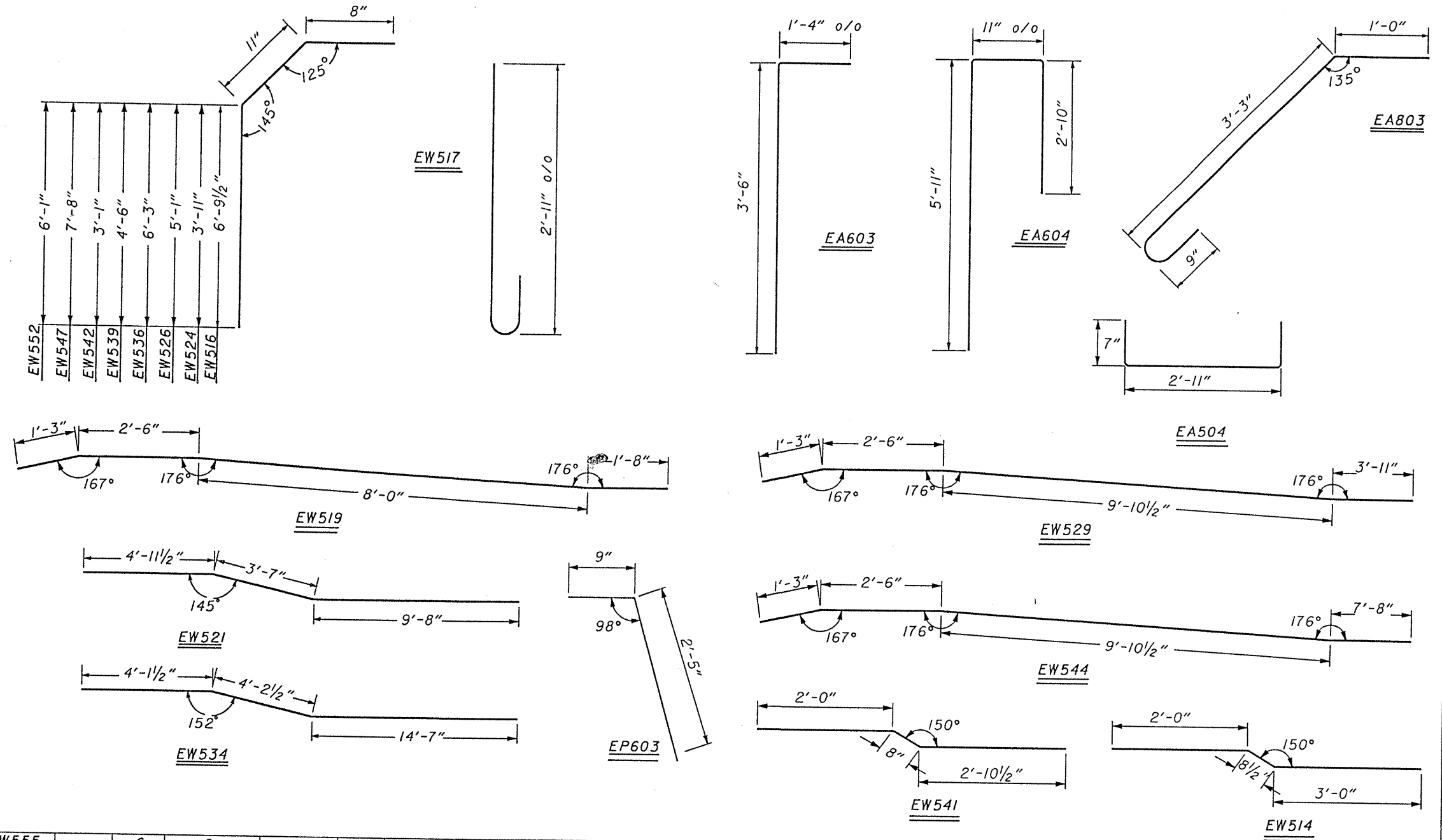
ABUTMENTS

MARK No.	REAR	FWD.	TOTAL NO.	LENGTH	SHP.	WEIGHT
EA503	28		28	16'-2"	S	472
EA504	4	4	8	3'-3"	B	27
EA505		14	14	19'-1"	S	279
EA506		14	14	20'-7"	S	301
EA603	42	52	94	6'-4"	B	894
EA604	42	52	94	9'-5"	B	1330
EA803	39	46	85	5'-2"	B	1173
Total						4476

WINGWALLS

EW513	7	7	14	5'-6"	S	80
EW514	1	1	2	5'-5 1/2"	B	11
EW515	2		2	9'-7"	S	20
EW516	4		4	8'-1 1/2"	B	34
EW517	29	24	53	3'-6"	B	193
EW518	4		4	13'-7"	S	57
EW519	2		2	13'-2"	B	27
EW520	2		2	17'-3"	S	36
EW521	2		2	18'-0"	B	38
EW522	2		2	11'-8"	S	24
EW523	1	1	2	6'-6"	S	14
EW524	1	1	2	5'-3"	B	11
EW525	1		1	7'-9"	S	8
EW526	1		1	6'-5"	B	7
EW527	4		4	4'-11 1/2"	S	21
EW528	2		2	12'-0"	S	25
EW529		2	2	17'-3 1/2"	B	36
EW530		2	2	16'-4"	S	34
EW531		4	4	17'-10"	S	74
EW532		2	2	22'-6"	S	47
EW533		2	2	17'-8"	S	37
EW534		2	2	22'-8"	B	47
EW535		4	4	9'-4"	S	39
EW536		7	7	7'-10"	B	57
EW537		6	6	4'-7 1/2"	S	29
EW538		1	1	7'-5"	S	8
EW539		1	1	6'-1"	B	6
EW540	8	6	14	6'-3 1/4"	S	92
EW541	1	1	2	5'-3 1/2"	B	11
EW542	10	8	18	4'-5"	B	83
EW543	7	7	14	21'-10 3/4"	S	320
EW544	3	3	6	21'-3 1/2"	B	133
EW545	16		16	14'-10 1/2"	S	248
EW546	13		13	10'-2 1/2"	S	138
EW547	13		13	9'-0"	B	122
EW548	10		10	2'-9"	S	27
EW549	6		6	5'-2 1/2"	S	33
EW550	4		4	5'-6 1/2"	S	23
EW551		7	7	9'-0 1/2"	S	66
EW552		7	7	7'-5"	B	54
EW553		22	22	3'-8 1/2"	S	85
EW554		6	6	6'-10 1/2"	S	43

BENDING DIAGRAMS



EW555		6	6	4'-4"	S	27	EW568		2	2	8'-2"	S	17
EW556		4	4	5'-6 1/2"	S	23					Total		2867
EW557	4		4	8'-5"	S	35							
EW558	2		2	2'-8"	S	6							
EW559	1		1	9'-5"	S	10							
EW560	1		1	9'-7"	S	10							
EW561	2	4	6	10'-1"	S	63	EP510			60	13'-11 1/2"	S	874
EW562		2	2	4'-9"	S	10	EP511			8	11'-4 7/8"	S	95
EW563		1	1	8'-11"	S	9	EP512			8	11'-7"	S	97
EW564		1	1	9'-1"	S	9	EP513			60	14'-1 1/4"	S	883
EW565		1	1	9'-2"	S	10	EP610			400	3'-0 1/2"	B	1827
EW566	7	7	14	5'-5"	S	79	EP611			219	1'-7"	S	521
Series EW567	1	1	2 Series	6'-1"			EP612			400	1'-11 1/2"	B	1177
Series Series	Series	Series	5 Bars	5'-7"	S	61							
PARAPETS												Total	5474

STATE OF OHIO
DEPARTMENT OF TRANSPORTATION
DISTRICT 9 OFFICE

STEEL LIST

Br. No. ROS-35-2157L
U.S.R. 35 W.B. over U.S.R. 23 S.B.

DESIGNER: G.E.C. DRAWN: G.E.C. PLOTTED: INTERGRAPH CAD0 CHECKED: N.L.H. REVISION: DATE: 8/4/94

40/40