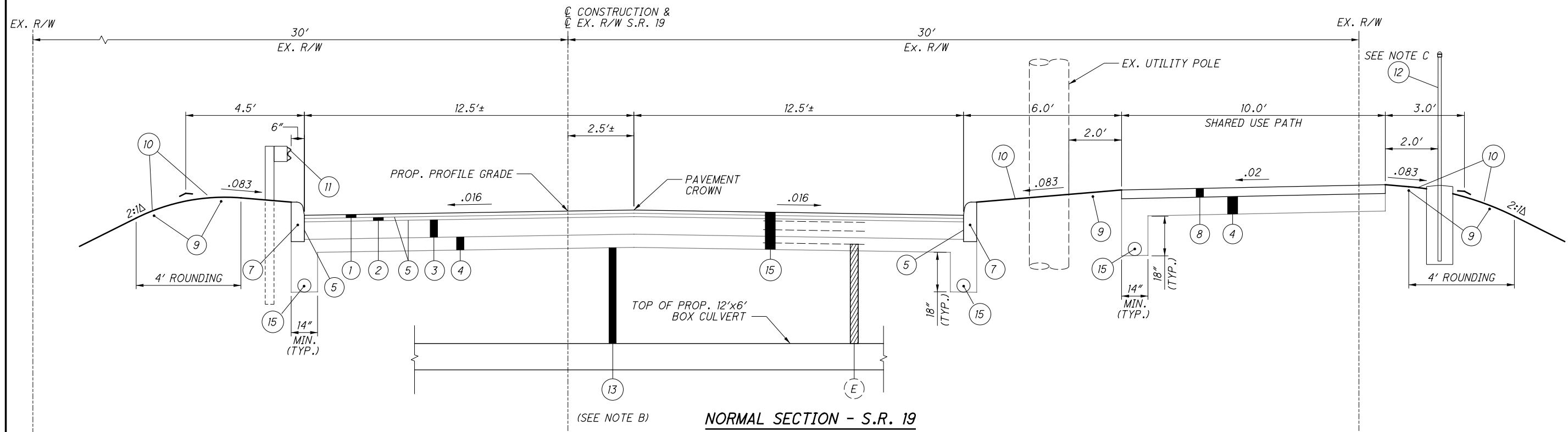
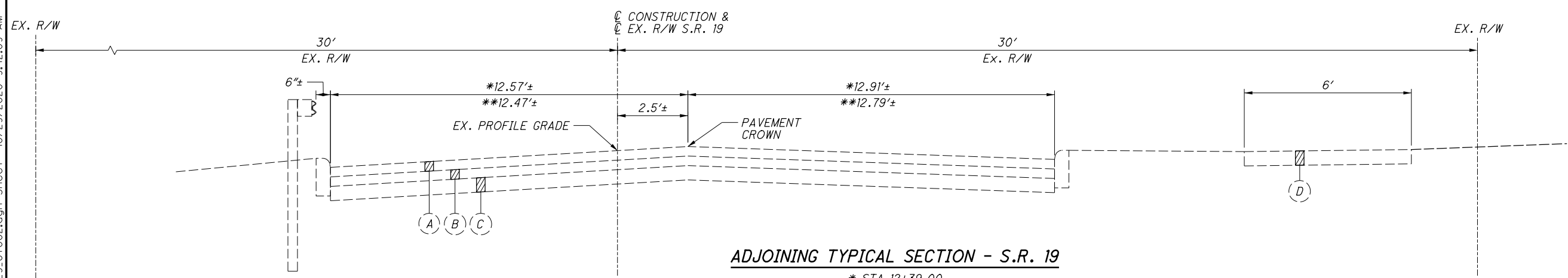


S:\Projects\SAN09\01329\Design\Roadway\Sheets\01329\_C\002.dgn Sheet 10/29/2020 9:42:09 AM REGuser



**NORMAL SECTION - S.R. 19**  
 LIMITING STATIONS:  
 FROM STA. 12+39.00 TO STA. 13+50.00 = 111 FT



**ADJOINING TYPICAL SECTION - S.R. 19**  
 \* STA 12+39.00  
 \*\* STA 13+50.00

**LEGEND**

- |   |  |                                   |
|---|--|-----------------------------------|
| ① ITEM 441 - 1 1/2" ASPHALT CONCRETE SURFACE COURSE, TYPE 1, (448), PG64-22 | ⑩ ITEM 659 - SEEDING AND MULCHING          | Ⓐ EXISTING 4"± ASPHALT CONCRETE   |
| ② ITEM 441 - 1 1/2" ASPHALT CONCRETE INTERMEDIATE COURSE, TYPE 1, (448)     | ⑪ ITEM 606 - GUARDRAIL, TYPE MGS           | Ⓑ EXISTING 4"± BRICK (SEE NOTE A) |
| ③ ITEM 301 - 8" ASPHALT CONCRETE BASE                                       | ⑫ ITEM 607 - FENCE, TYPE CLT               | Ⓒ EXISTING 6"± AGGREGATE BASE     |
| ④ ITEM 304 - 6" AGGREGATE BASE (UNLESS OTHERWISE NOTED)                     | ⑬ ITEM 611 - BACKFILL                      | Ⓓ EXISTING 6' SIDEWALK (T=4')     |
| ⑤ ITEM 407 - NON-TRACKING TACK COAT   | ⑭ ITEM 202 - PAVEMENT REMOVED, AS PER PLAN | Ⓔ EXISTING EARTH FILL             |
| ⑥ ITEM 204 - SUBRADE COMPACTION (FOR 8" WATER LINE CROSSING ONLY)           | ⑮ ITEM 605 - 6" SHALLOW PIPE UNDERDRAIN    |                                   |
| ⑦ ITEM 609 - CURB, TYPE 6   |  |                                   |
| ⑧ ITEM 608 - CONCRETE WALK (10' SHARED USE PATH/SUP, T=4')                  |  |                                   |
| ⑨ ITEM 659 - 3" TOPSOIL   |  |                                   |

**NOTES**

- A. THE CONTRACTOR SHALL CONTACT THE VILLAGE OF GREEN SPRINGS PRIOR TO EXISTING ROADWAY DEMOLITION. ALL BRICK SHALL BE SALVAGED AS REQUIRED PER THE DIRECTION OF THE VILLAGE OF GREEN SPRINGS.
- B. ESTIMATED DEPTH OF COVER IS 9'±.
- C. FENCE TO MATCH HEIGHT OF EXISTING FENCE ON SITE.
- Δ OR AS NOTED ON CROSS SECTIONS.

TYPICAL SECTIONS - S.R. 19

SAN-19-0.24

S:\Projects\SAN09\01329\Design\Roadway\Sheets\01329\_GG001.dgn Sheet 10/27/2020 3:24:39 PM REGuser

SHEET NUM.											PART.	ITEM	ITEM	GRAND	UNIT	DESCRIPTION	SEE SHEET NO.	CALCULATED LI	CHECKED PA
4	5	6	10	11	13	14	17	23	31		01/STR/ BR	EXT	TOTAL						
<b>ROADWAY</b>																			
											LS	201	11000	LS	CLEARING AND GRUBBING				
			13	308							321	202	23001	321	SY	PAVEMENT REMOVED, AS PER PLAN	5		
					930						930	202	30000	930	SF	WALK REMOVED			
			8		222						230	202	32000	230	FT	CURB REMOVED			
			366		118						484	202	35100	484	FT	PIPE REMOVED, 24" AND UNDER			
					87.5						87.5	202	38000	87.5	FT	GUARDRAIL REMOVED			
					2						2	202	42010	2	EACH	ANCHOR ASSEMBLY REMOVED, TYPE E			
			3								3	202	58000	3	EACH	MANHOLE REMOVED			
					2						2	202	58300	2	EACH	CATCH BASIN OR INLET REMOVED			
					202						202	202	75000	202	FT	FENCE REMOVED			
						44	97				141	203	10000	141	CY	EXCAVATION			
						1,073	221				1,294	203	20000	1,294	CY	EMBANKMENT			
			9								9	204	10000	9	SY	SUBGRADE COMPACTION			
					150						150	606	15050	150	FT	GUARDRAIL, TYPE MGS			
					2						2	606	26150	2	EACH	ANCHOR ASSEMBLY, MGS TYPE E - MASH 2016			
					110						110	607	20000	110	FT	FENCE, TYPE CL			
					1,462						1,462	608	10000	1,462	SF	4" CONCRETE WALK (INCLUDES 10' SHARED USE PATH)			
			8		212						220	609	26000	220	FT	CURB, TYPE 6			
									2		2	623	38500	2	EACH	MONUMENT ASSEMBLY			
					4						4	626	00116	4	EACH	BARRIER REFLECTOR, TYPE 5 - BIDIRECTIONAL			
<b>EROSION CONTROL</b>																			
	1										1	659	00100	1	EACH	SOIL ANALYSIS TEST			
	149										149	659	00300	149	CY	TOPSOIL (3" THICKNESS)			
			22			1,230	569				1,821	659	10000	1,821	SY	SEEDING AND MULCHING			
	90										90	659	14000	90	SY	REPAIR SEEDING AND MULCHING			
	90										90	659	15000	90	SY	INTER-SEEDING			
	0.17		0.01								0.18	659	20000	0.18	TON	COMMERCIAL FERTILIZER			
	0.38										0.38	659	31000	0.38	ACRE	LIME			
	10										10	659	35000	10	MGAL	WATER			
	4										4	659	40000	4	MSF	MOWING			
	16,916										16,916	832	30000	16,916	EACH	EROSION CONTROL			
<b>DRAINAGE</b>																			
					0.25						0.25	602	20000	0.25	CY	CONCRETE MASONRY			
					374						374	605	11100	374	FT	6" SHALLOW PIPE UNDERDRAINS			
	50										50	611	00900	50	FT	6" CONDUIT, TYPE B			
	50										50	611	01100	50	FT	6" CONDUIT, TYPE C			
	50										50	611	01400	50	FT	6" CONDUIT, TYPE E			
	50										50	611	01500	50	FT	6" CONDUIT, TYPE F			
	50										50	611	01800	50	FT	8" CONDUIT, TYPE B			
	50				28						78	611	02000	78	FT	8" CONDUIT, TYPE C			
					25						25	611	05900	25	FT	15" CONDUIT, TYPE B (RCP 706.02, CLASS III)			
					88						88	611	06100	88	FT	15" CONDUIT, TYPE C (RCP 706.02 CLASS III)			
					2						2	611	98150	2	EACH	CATCH BASIN, NO. 3			
					1						1	611	99574	1	EACH	MANHOLE, NO. 3			
					2						2	611	99710	2	EACH	PRECAST REINFORCED CONCRETE OUTLET			
<b>PAVEMENT</b>																			
			3	69							72	301	46000	72	CY	ASPHALT CONCRETE BASE, PG64-22			
			2	79							81	304	20000	81	CY	AGGREGATE BASE			
			2	37							39	407	20000	39	GAL	NON-TRACKING TACK COAT			
			1	13							14	441	50000	14	CY	ASPHALT CONCRETE SURFACE COURSE, TYPE 1, (448), PG64-22			
			1	13							14	441	50200	14	CY	ASPHALT CONCRETE INTERMEDIATE COURSE, TYPE 1, (448)			

GENERAL SUMMARY

SAN - 19 - 0.24

ITEM 202-PAVEMENT REMOVED, AS PER PLAN  
 Sta. 12+39 to Sta. 13+50 = 111'  
 $25' \times 111' \times 1/9 = 308.33 \text{ SY}$

Watermain Crossing (SR 19)  
 $(3'-8'')(32') \times 1/9 = 13.04 \text{ SY}$  321 SY

ITEM 301- ASPHALT CONCRETE BASE, PG64-22  
 Sta. 12+39 to Sta. 13+50 = 111'  
 $[(8''/12) \times 25' \times 111'] \times 1/27 = 68.52 \text{ CY}$

Watermain Crossing (SR 19)  
 $(8''/12)(3'-8'')(32') \times 1/27 = 2.9 \text{ CY}$  72 CY

ITEM 304- AGGREGATE BASE  
 Sta. 12+39 to Sta. 13+50 = 111'  
 $[(6''/12) \times 25' \times 111'] \times 1/27 = 51.38 \text{ CY}$

Sta. 12+39 to Sta. 13+50 = 111'  
 Sidewalk & SUP  
 $[(6''/12) \times 10' \times 111'] \times 1/27 = 20.56 \text{ CY}$

Plus Tapers  
 2 Ea.  $[(6''/12) \times [(6' + 10')/2 * 22']] \times 1/27 = 6.52 \text{ CY}$

Watermain Crossing (SR 19)  
 $(6''/12)(3'-8'')(32') \times 1/27 = 2.17 \text{ CY}$  81 CY

ITEM 407-NON-TRACKING TACK COAT  
 Sta. 12+39 to Sta. 13+50 = 111'  
 Roadway Pavement  
 $25' \times 111' \times 1/9 \times (0.04 \text{ GAL/SY}) = 12.33 \text{ GAL}$   
 Plus Intermediate Pavement & face of curb  
 $[(25' \times 111') + [2 \text{ sides} \times (12''/12) \times 111']]$   
 $\times 1/9 \times (0.075 \text{ GAL./SY}) = 24.98 \text{ GAL}$

Watermain Crossing (SR 19)  
 $(3'-8'')(32') \times 1/9 \times (0.075 \text{ Gal/SY}) = 0.98 \text{ Gal}$   
 Plus Intermediate  
 $(3'-8'')(32') \times 1/9 \times (0.075 \text{ Gal/SY}) = 0.98 \text{ Gal} = 1.96 \text{ Gal}$  39 GAL.

ITEM 441- ASPHALT CONCRETE SURFACE COURSE,  
 TYPE 1, (448), PG64-22  
 Sta. 12+39 to Sta. 13+50 = 111'  
 $[(1-1/2''/12) \times 25' \times 111'] \times 1/27 = 12.85 \text{ CY}$

Watermain Crossing (SR 19)  
 $(1 \ 1/2''/12) \times (3'-8'')(32') \times 1/27 = 0.54 \text{ CY}$  14 CY

ITEM 441- ASPHALT CONCRETE INTERMEDIATE COURSE,  
 TYPE 1, (448)  
 Sta. 12+39 to Sta. 13+50 = 111'  
 $[(1-1/2''/12) \times 25' \times 111'] \times 1/27 = 12.85 \text{ CY}$

Watermain Crossing (SR 19)  
 $(1 \ 1/2''/12) \times (3'-8'')(32') \times 1/27 = 0.54 \text{ CY}$  14 CY

CALCULATED  
 LI  
 CHECKED  
 PA

CALCULATIONS

SAN - 19 - 0.24

