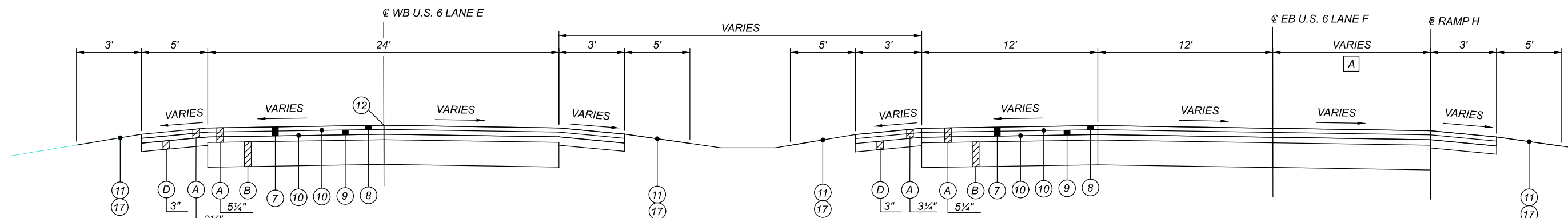


U.S. 6 STA. 520+87.35 (BK) = WB U.S. 6 LANE E STA. 520+87.35 (AH)

U.S. 6

U.S. 6 STA. 520+87.35 (BK) = EB U.S. 6 LANE F STA. 520+91.93 (AH)

U.S. 6 STA. 519+51.67 TO STA. 520+80.80 = 129.13 FT



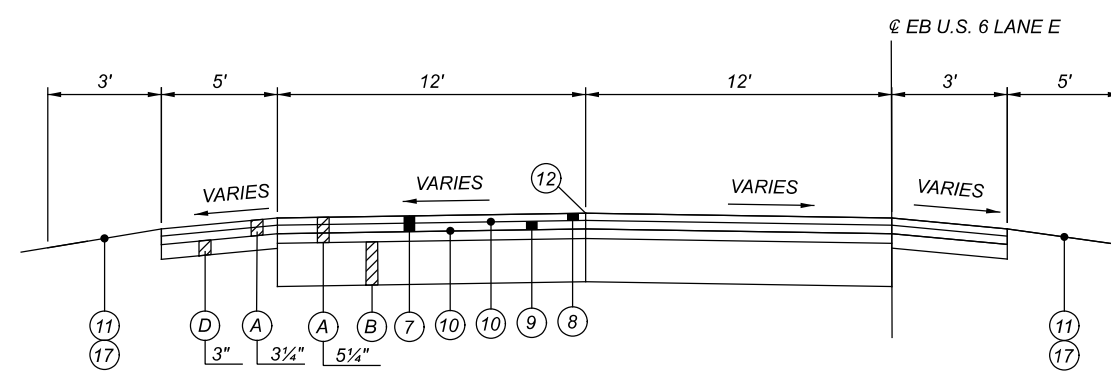
WB U.S. 6 LANE E
 STA. 520+87.35 TO STA. 522+73.15 = 185.80 FT
 STA. 524+97.83 TO STA. 535+08.51 = 1010.68 FT

U.S. 6

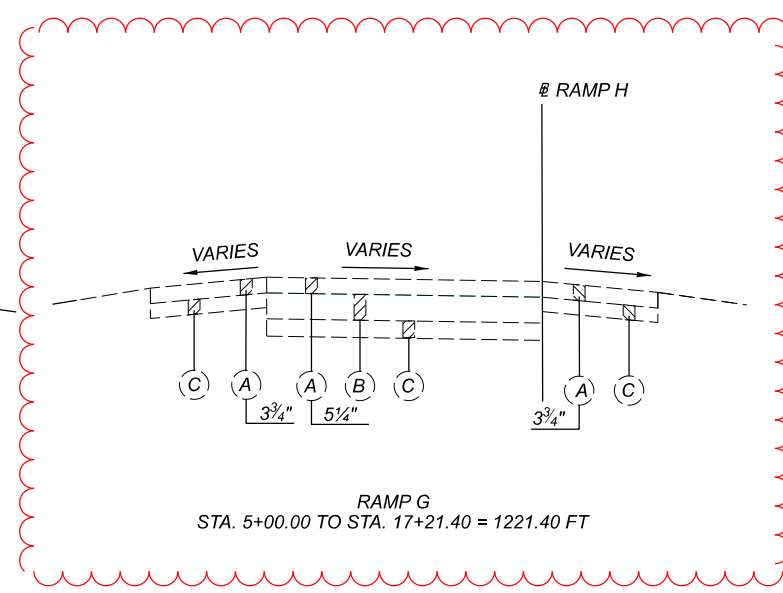
EB U.S. 6 LANE F
 STA. 520+80.80 TO STA. 528+04.22 = 723.42 FT
 EB U.S. 6 LANE F STA. 524+92.00 = RAMP H STA. 0+00+00

U.S. 6 STA. 520+87.35 (BK) =
 EB U.S. 6 LANE E STA. 520+80.80 (AH)

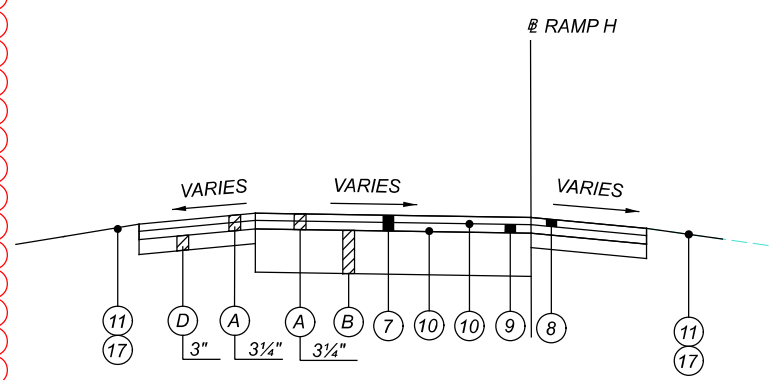
A VARIES 0'-0" TO 42'-7" FROM STA. 524+92.00 TO STA. 528+04.22



WB U.S. 6 LANE E
 STA. 535+08.51 TO STA. 536+19.88 = 815.66 FT



RAMP G
 STA. 5+00.00 TO STA. 17+21.40 = 1221.40 FT



RAMP H
 STA. 3+09.20 TO STA. 12+33.41 = 924.21 FT
 @ EB U.S. 6 LANE F STA. 528+04.22 (BK) =
 @ RAMP H STA. 3+09.20 (AH)

FOR LEGEND SEE SHEET 7




SAN-6/20I-14.87/0.01

MODEL: Sheet PAPER SIZE: 17x11 (in.) DATE: 3/16/2022 TIME: 9:25:15 AM USER: jespelage
 C:\ODOT_D2\0118257A\00 - SAN-6_20I-1487_000\11020400-Engineering\Roadway\Sheets\11020_G0001.dgn

SHEET NUM.												PART.	ITEM	ITEM	GRAND	UNIT	DESCRIPTION	SEE SHEET NO.	
12	13	15		31	31A	32	33	70	80	83	94	01/SAF/PV	EXT	TOTAL					
	LS											LS	201	11000	LS		ROADWAY		
		690				8,054							8,744	202	23000	8,744	SY	PAVEMENT REMOVED	
	360					239							599	202	35100	599	FT	PIPE REMOVED, 24" AND UNDER	
						2,883							2,883	202	38000	2,883	FT	GUARDRAIL REMOVED	
						2							2	202	47800	2	EACH	IMPACT ATTENUATOR REMOVED	
						1							1	202	58100	1	EACH	CATCH BASIN REMOVED	
											132		132	202	75000	132	FT	FENCE REMOVED	
									2,098				2,098	203	10000	2,098	CY	EXCAVATION	
	100					5,100			635				5,835	203	20000	5,835	CY	EMBANKMENT	
						868							868	204	10000	868	SY	SUBGRADE COMPACTION	
						290		705					995	204	13000	995	CY	EXCAVATION OF SUBGRADE	
						290		705					995	204	30020	995	CY	GRANULAR MATERIAL, TYPE C	
						1	2						3	204	45000	3	HOUR	PROOF ROLLING	
						868							868	204	50001	868	SY	GEOTEXTILE FABRIC, AS PER PLAN	13
													150	206	10500	150	TON	CEMENT	
						4,945							4,945	206	11000	4,945	SY	CURING COAT	
						4,945							4,945	206	15020	4,945	SY	CEMENT STABILIZED SUBGRADE, 14 INCHES DEEP	
													LS	206	30000	LS		MIXTURE DESIGN FOR CHEMICALLY STABILIZED SOILS	
					402		34						436	209	60200	436	STA	LINEAR GRADING	
						3,350							3,350	606	15050	3,350	FT	GUARDRAIL, TYPE MGS	
						825							825	606	15100	825	FT	GUARDRAIL, TYPE MGS WITH LONG POSTS	
	1,600												1,600	606	15101	1,600	FT	GUARDRAIL, TYPE MGS WITH LONG POSTS, AS PER PLAN	13
						1							1	606	20000	1	EACH	FLARED END SECTION	
						2							2	606	26050	2	EACH	ANCHOR ASSEMBLY, MGS TYPE B	
						8							8	606	26150	8	EACH	ANCHOR ASSEMBLY, MGS TYPE E, MASH 2016	
						14							14	606	26550	14	EACH	ANCHOR ASSEMBLY, MGS TYPE T	
						4							4	606	35002	4	EACH	MGS BRIDGE TERMINAL ASSEMBLY, TYPE 1	
						2							2	606	35102	2	EACH	MGS BRIDGE TERMINAL ASSEMBLY, TYPE 2	
						2							2	606	60029	2	EACH	IMPACT ATTENUATOR, TYPE 2 (BIDIRECTIONAL), AS PER PLAN (60 MPH/24 INCHES)	14
											32		32	607	15000	32	FT	FENCE, TYPE 47	
		1,500											1,500	622	41100	1,500	FT	PORTABLE BARRIER, UNANCHORED	
																		EROSION CONTROL	
		50											50	601	20010	50	CY	CRUSHED AGGREGATE SLOPE PROTECTION	
		20											20	601	21050	20	SY	TIED CONCRETE BLOCK MAT WITH TYPE 1 UNDERLAYMENT	
		90											90	601	34301	90	CY	ROCK CHANNEL PROTECTION, TYPE D WITHOUT FILTER, AS PER PLAN	13
													16	616	10000	16	MGAL	WATER	
		2											2	659	00100	2	EACH	SOIL ANALYSIS TEST	
		1,597					372						1,969	659	00300	1,969	CY	TOPSOIL	
		14,372								2,100			16,472	659	10000	16,472	SY	SEEDING AND MULCHING	
		719											719	659	14000	719	SY	REPAIR SEEDING AND MULCHING	
		719											719	659	15000	719	SY	INTER-SEEDING	
		2.01											2.01	659	20000	2.01	TON	COMMERCIAL FERTILIZER	
		2.97											2.97	659	31000	2.97	ACRE	LIME	
		82											82	659	35000	82	MGAL	WATER	
								3,346					3,346	670	00500	3,346	SY	SLOPE EROSION PROTECTION	
													LS	832	15000	LS		STORM WATER POLLUTION PREVENTION PLAN	
													LS	832	15002	LS		STORM WATER POLLUTION PREVENTION INSPECTIONS	
													LS	832	15010	LS		STORM WATER POLLUTION PREVENTION INSPECTION SOFTWARE	
													50,000	832	30000	50,000	EACH	EROSION CONTROL	
																		DRAINAGE	
								3					3	602	20000	3	CY	CONCRETE MASONRY	
													3,656	605	1110	3,656	FT	6" SHALLOW PIPE UNDERDRAINS WITH GEOTEXTILE FABRIC	
		1,000											1,000	605	13300	1,000	FT	6" UNCLASSIFIED PIPE UNDERDRAINS	
		500											500	605	31100	500	FT	AGGREGATE DRAINS	

GENERAL SUMMARY

DESIGN AGENCY



DESIGNER
BMG

REVIEWER
JRE 07/19/21

PROJECT ID
111020

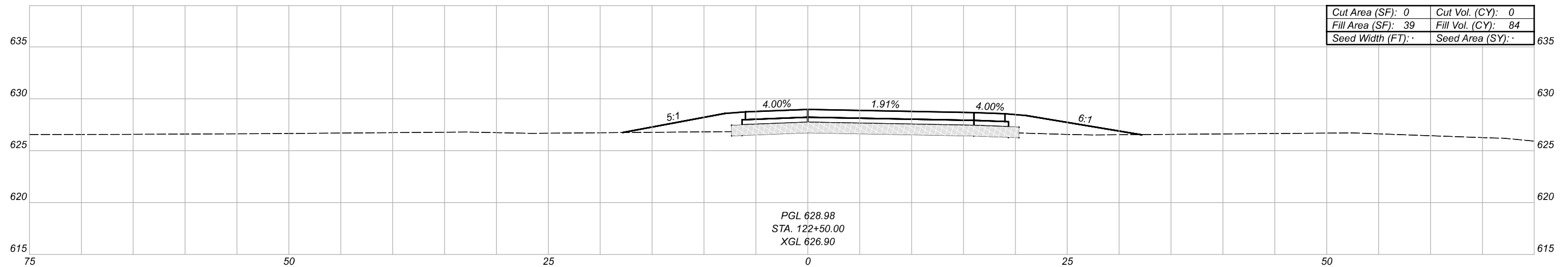
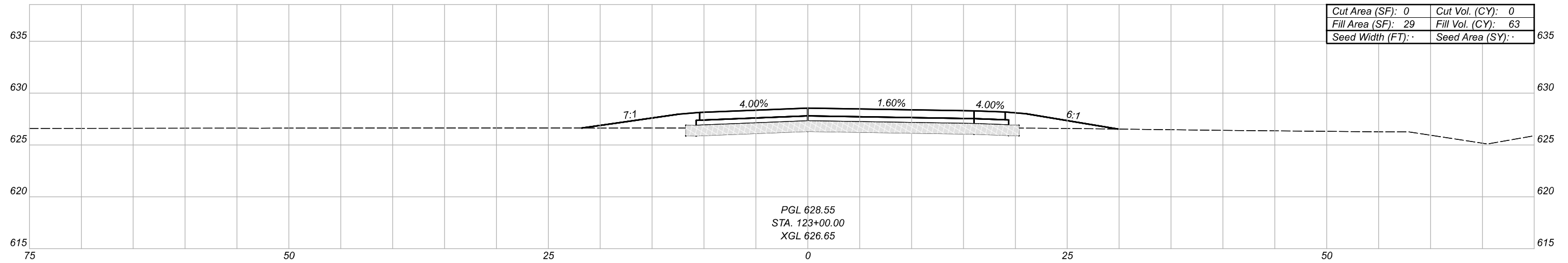
SHEET TOTAL
28 157

SAN-6/20I-14.87/0.00

MODEL: BLP-RO06G - 122+50.00 (Sheet) PAPER SIZE: 17x11 (in.) DATE: 3/16/2022 TIME: 2:22:00 PM USER: jdelaney
 O:\0001_D2\018257A.00 - SAN-6-20I-1487_000\11020\400-Engineering\Roadway\Sheets\11020_X500.dgn

EXCAVATION AND EMBANKMENT QUANTITIES	TOTALS CARRIED TO GENERAL SUMMARY
ITEM 203 - EXCAVATION	2,098 CY*
ITEM 203 - EMBANKMENT	5,100 CY

* INCLUDES A DEDUCTION OF 219 CY FOR OVERLAP OF GRADING EARTHWORK AND PAVEMENT REMOVAL QUANTITIES.



Sheet Totals		
Seeding	Cut	Fill
·	0	147

CROSS SECTIONS - RAMP G
 STA. 122+50 TO STA. 123+00

DESIGN AGENCY



DESIGNER

BMG

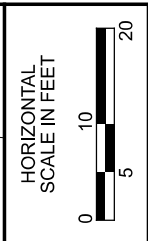
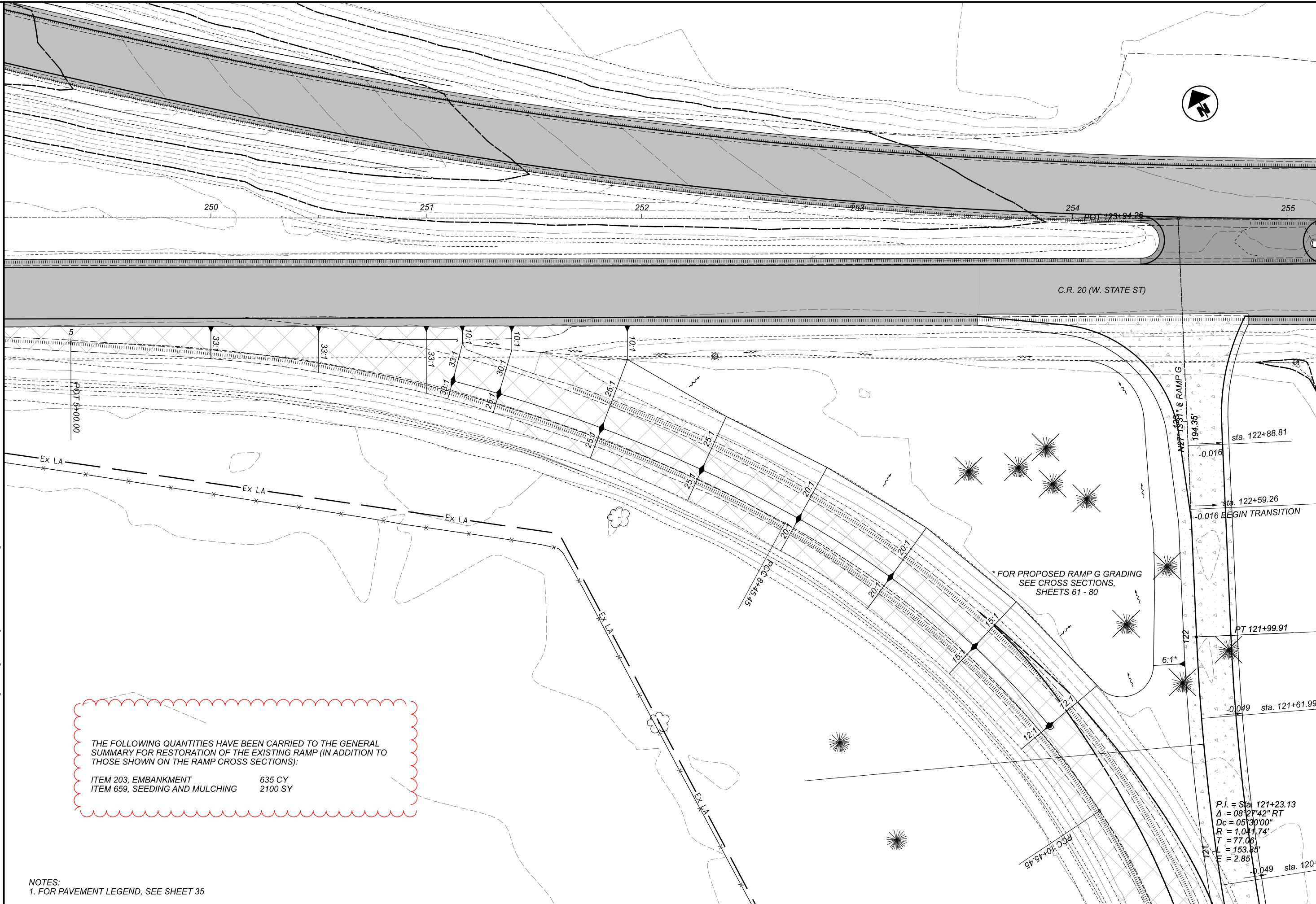
REVIEWER

JRE 07/19/21

PROJECT ID

111020

SHEET	TOTAL
80	157



HORIZONTAL SCALE IN FEET

GRADING PLAN
EXISTING RAMP G

DESIGN AGENCY



DESIGNER: BMG
REVIEWER: JRE 07/19/21
PROJECT ID: 111020
SHEET TOTAL: 83 / 157

THE FOLLOWING QUANTITIES HAVE BEEN CARRIED TO THE GENERAL SUMMARY FOR RESTORATION OF THE EXISTING RAMP (IN ADDITION TO THOSE SHOWN ON THE RAMP CROSS SECTIONS):

ITEM 203, EMBANKMENT	635 CY
ITEM 659, SEEDING AND MULCHING	2100 SY

NOTES:
1. FOR PAVEMENT LEGEND, SEE SHEET 35

* FOR PROPOSED RAMP G GRADING SEE CROSS SECTIONS, SHEETS 61 - 80

P.I. = Sta 121+23.13
 $\Delta = 08^{\circ}27'42''$ RT
Dc = 05'30'00"
R = 1,041.74'
T = 77.06'
L = 153.85'
E = 2.85'