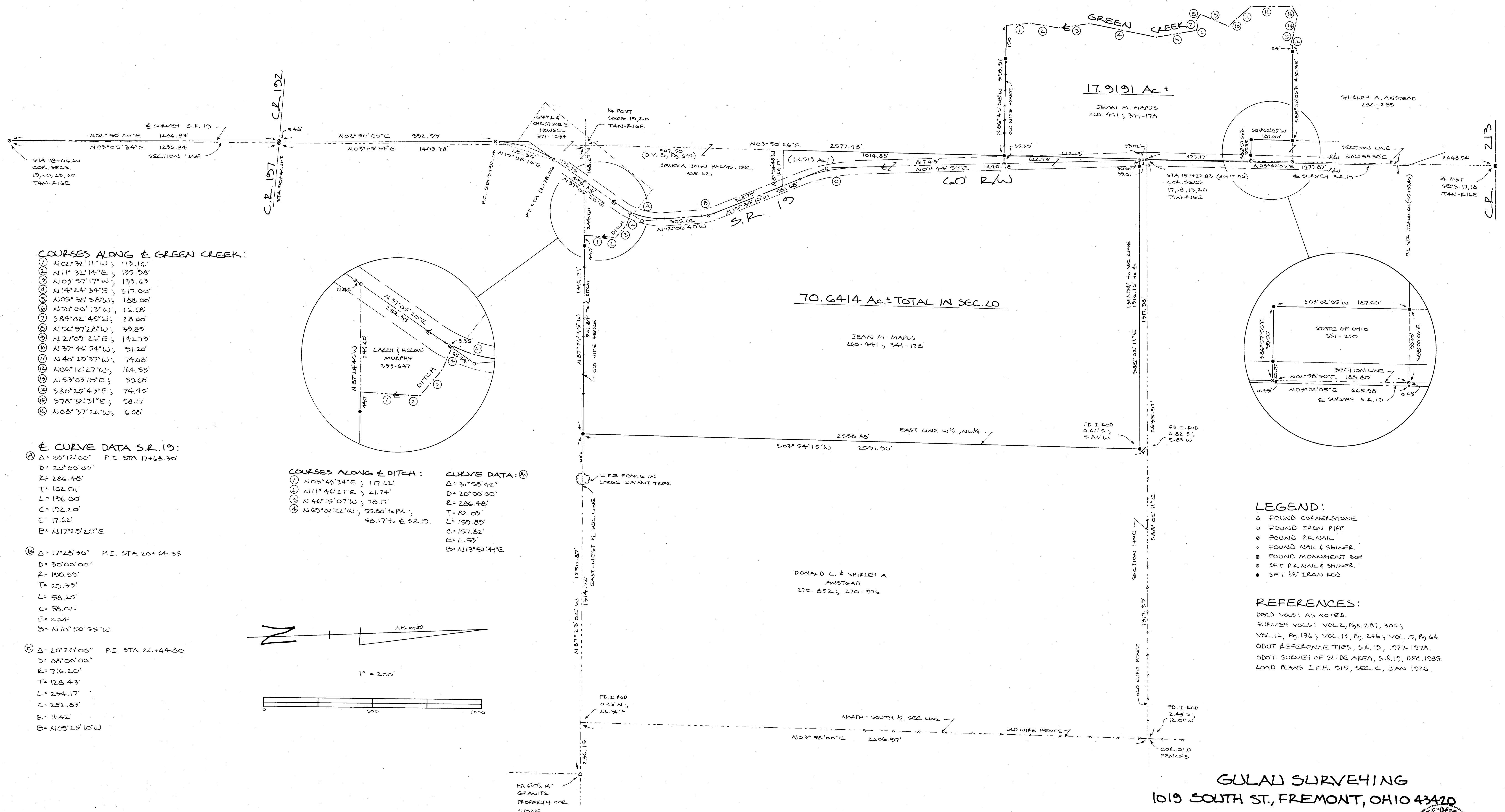


PLAT of SURVEY

FOR OSCAR MAPUS

PART SE $\frac{1}{4}$, SEC. 18; PART NE $\frac{1}{4}$, SEC. 19; PART W $\frac{1}{2}$, NW $\frac{1}{4}$, SEC. 20, T4N-R16E
GREEN CREEK TOWNSHIP, SANDUSKY COUNTY, OHIO
DEC. 1991 - OCT. 1992

15-207



COURSES ALONG E GREEN CREEK:

- ① N02°32'11"W; 113.16'
- ② N11°32'14"E; 135.58'
- ③ N03°57'17"W; 133.63'
- ④ N14°24'34"E; 317.00'
- ⑤ N05°38'58"W; 188.00'
- ⑥ N70°00'13"W; 14.68'
- ⑦ S84°02'45"W; 28.00'
- ⑧ N56°57'28"W; 33.89'
- ⑨ N27°09'26"E; 142.79'
- ⑩ N37°46'54"W; 51.20'
- ⑪ N40°29'37"W; 74.08'
- ⑫ N06°12'27"W; 164.55'
- ⑬ N53°03'10"E; 50.60'
- ⑭ S80°25'43"E; 74.45'
- ⑮ S78°32'31"E; 58.17'
- ⑯ N06°37'26"W; 6.08'

E CURVE DATA S.R. 19:

- Ⓐ Δ = 30°12'00" P.I. STA 17+68.30
D = 20°00'00"
R = 286.48'
T = 102.01'
L = 196.00'
C = 192.20'
E = 17.62'
B = N17°29'20"E
- Ⓑ Δ = 17°28'30" P.I. STA 20+64.35
D = 30°00'00"
R = 150.09'
T = 25.35'
L = 58.25'
C = 58.02'
E = 2.24'
B = N10°50'55"W

- Ⓒ Δ = 20°20'00" P.I. STA 26+44.80
D = 08°00'00"
R = 716.20'
T = 128.43'
L = 254.17'
C = 252.83'
E = 11.42'
B = N09°25'10"W

COURSES ALONG E DITCH:

- ① N05°49'34"E; 117.62'
- ② N11°46'27"E; 21.74'
- ③ N46°15'07"W; 78.17'
- ④ N60°02'22"W; 55.80' to P.K.; 58.17' to E.S.R. 19.

CURVE DATA: Ⓐ

- Δ = 31°58'42"
D = 20°00'00"
R = 286.48'
T = 82.09'
L = 157.85'
C = 157.82'
E = 11.53'
B = N13°52'41"E

LEGEND:

- △ FOUND CORNERSTONE
- FOUND IRON PIPE
- FOUND P.K. NAIL
- FOUND NAIL & SHINER
- FOUND MONUMENT BOX
- SET P.K. NAIL & SHINER
- SET 3/8" IRON ROD

REFERENCES:

DEED VOLS: AS NOTED.
SURVEY VOLS: VOL. 2, Pgs. 287, 304;
VOL. 12, Pg. 136; VOL. 13, Pg. 246; VOL. 15, Pg. 64.
ODOT REFERENCE TIES, S.R. 19, 1977-1978.
ODOT SURVEY OF SLIDE AREA, S.R. 19, DEC. 1985.
LOAD PLANS I.C.H. SIS, SEC. C, JAN. 1926.

GULAU SURVEYING
1019 SOUTH ST., FREMONT, OHIO 43420

David W. Gulau
DAVID W. GULAU, SUR#6727

