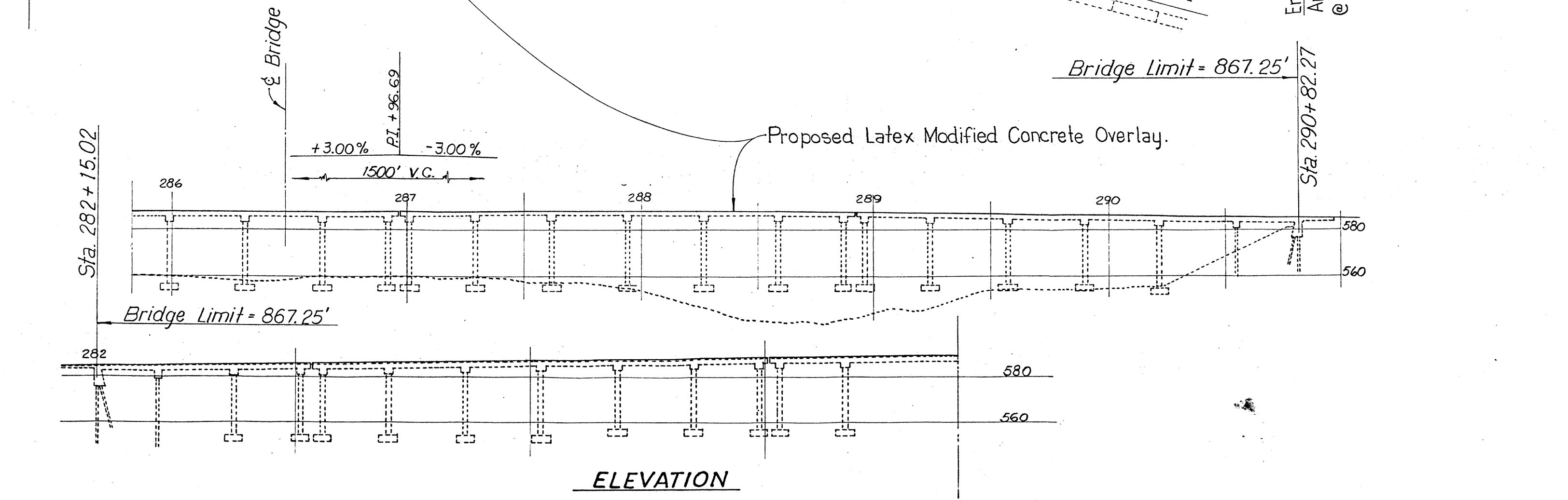
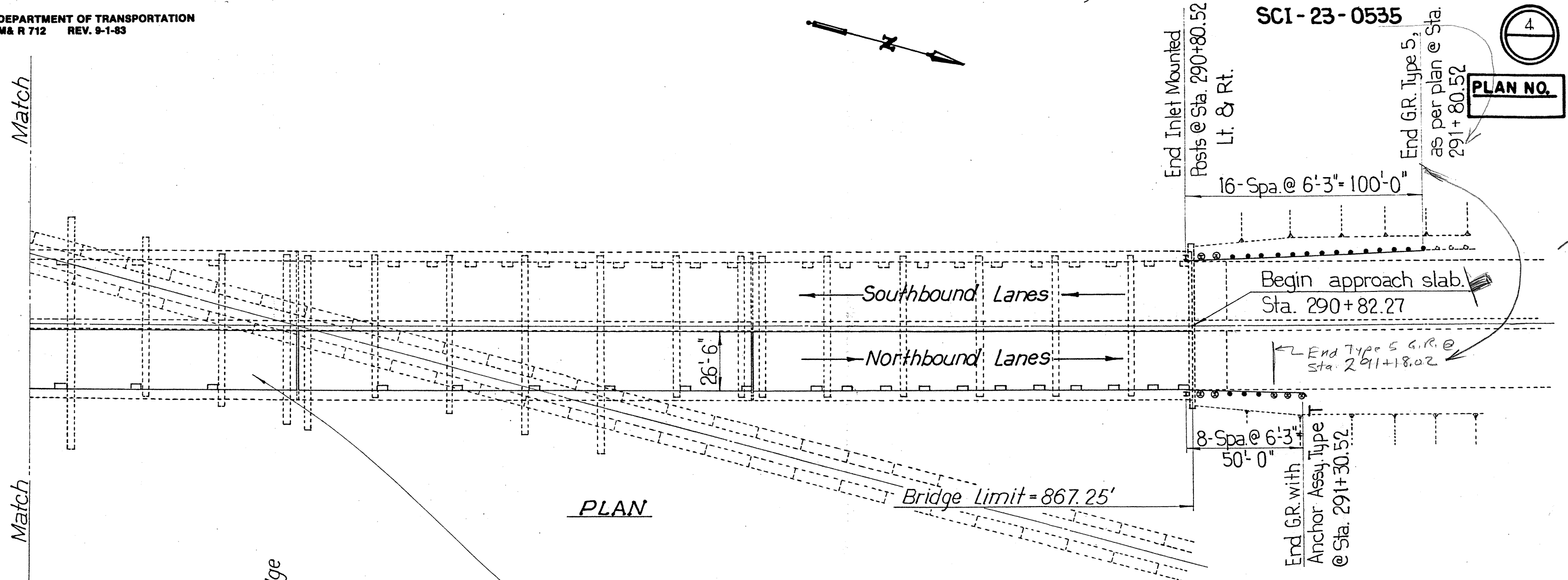
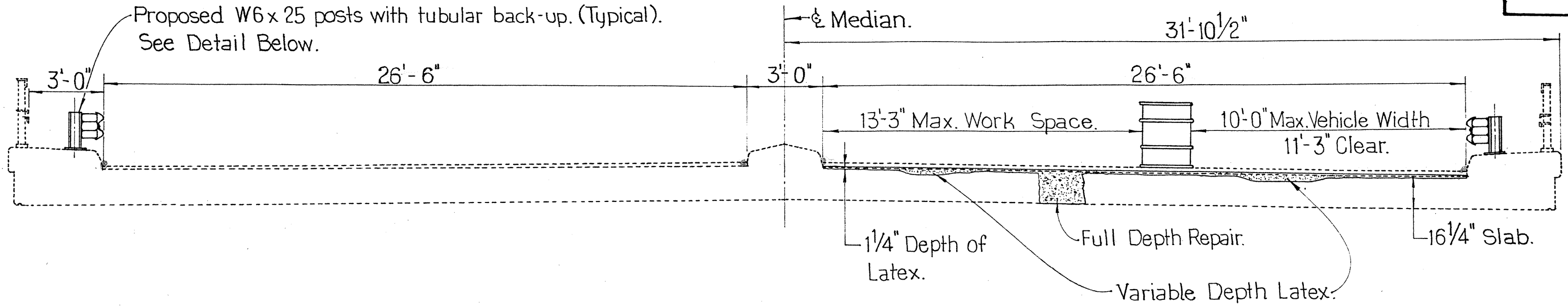


PLAN

Note: Item 845 - longitudinal joints in the concrete overlay are permitted, but only to the extent necessary to accommodate the width of the finishing machine, to allow maintenance of vehicular traffic or to facilitate changes in roadway crown. Except as approved by the Director, joints shall not be used adjacent to curbs or deck edges.





TRANSVERSE SECTION

(Northbound Lanes)

* Enlarge holes in posts near flange only to allow for up or down adjustment through-out length of guardrail. Width of hole $1\frac{3}{16}$ " x (Modified) Height $2\frac{5}{16}$ ".

845 - Latex Modified Concrete Overlay.
(Variable Thickness)

Re - Steel Clearance = 1"
10 - bar = $1\frac{1}{4}$ "
6 - bar = $\frac{3}{4}$ "
3" Total.

Existing deck area = 22,982.12 Sq. Ft.
Assume 50% of deck bad = $11,491.06 / 9 = 1,276.78$ Sq.Yds.

$1,276.78$ S.Y. x $3" / 36 = 106.39 \approx 107$ Cu. Yds.

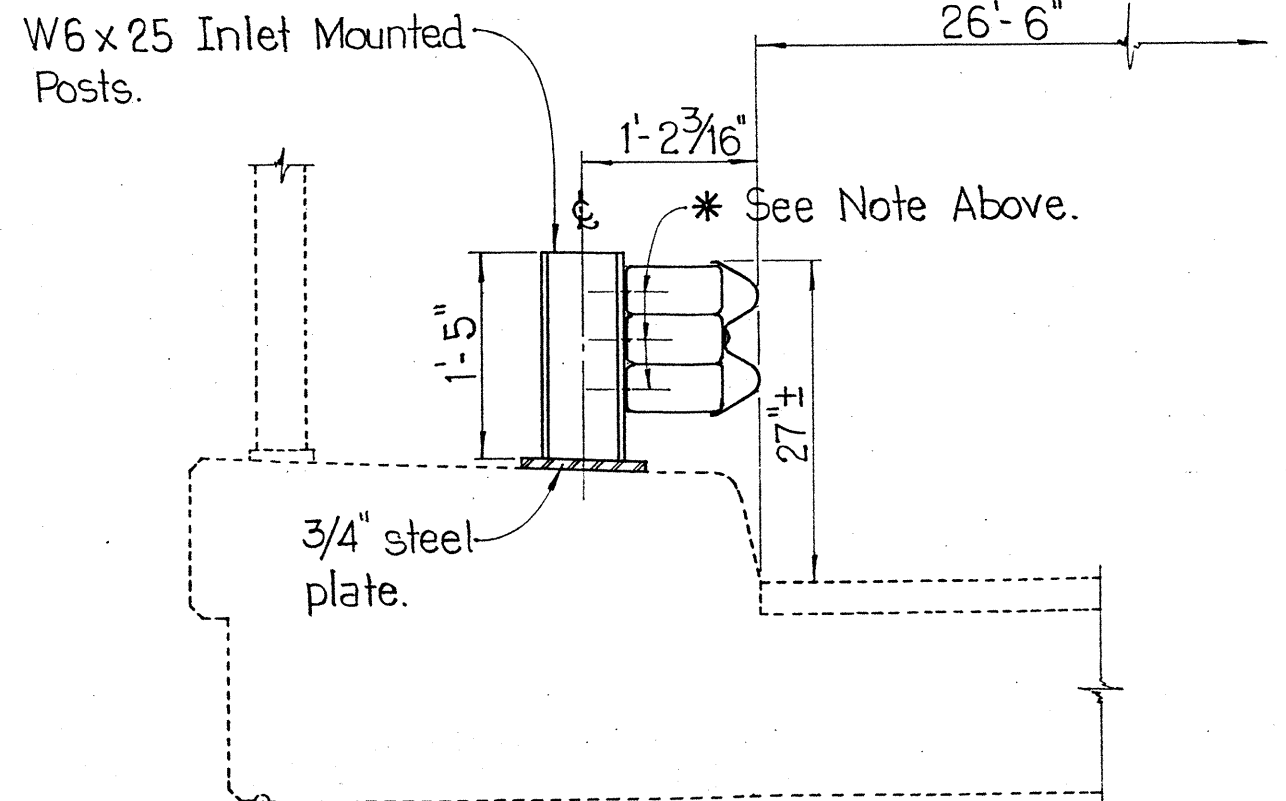
845 - Latex Modified Concrete Overlay.
($1\frac{1}{4}$ Inches Thick)

$867.25'$ Br. Limits x $26.5' / 9 = 2,553.56 \approx 2,554$ Sq.Yds.

845 - Full Depth Repair.

Assume 2% of deck bad =
 $2,554 \times 0.02 = 51.08$ Sq.Yds.

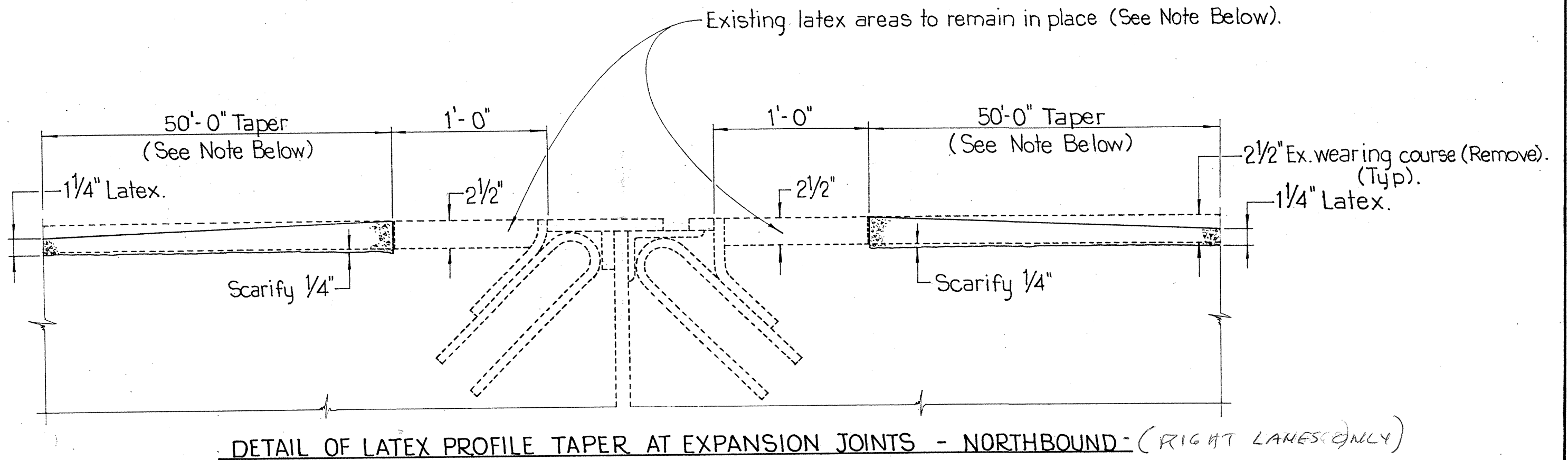
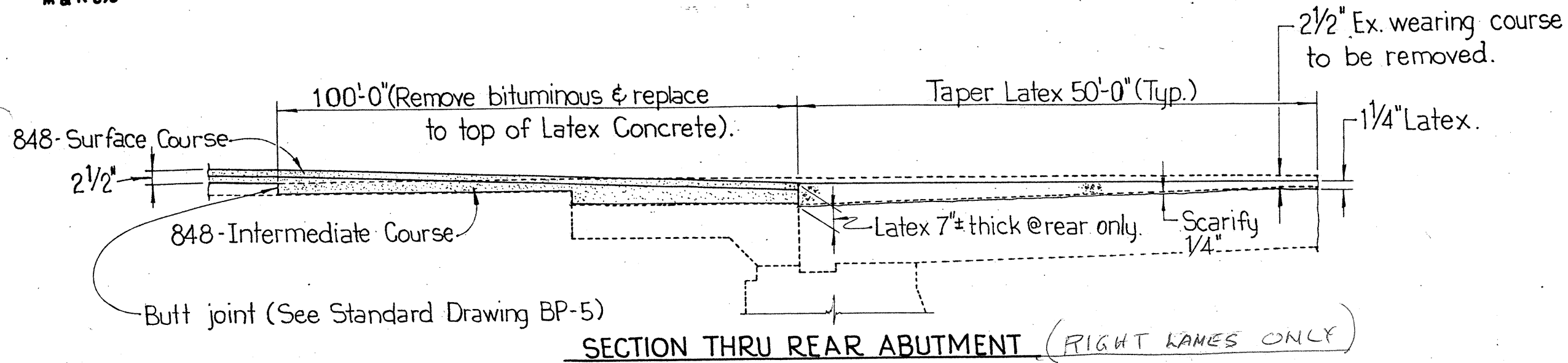
$51.08 \times 16.25"$ thick slab / 36 = 23.0 Cu. Yds.



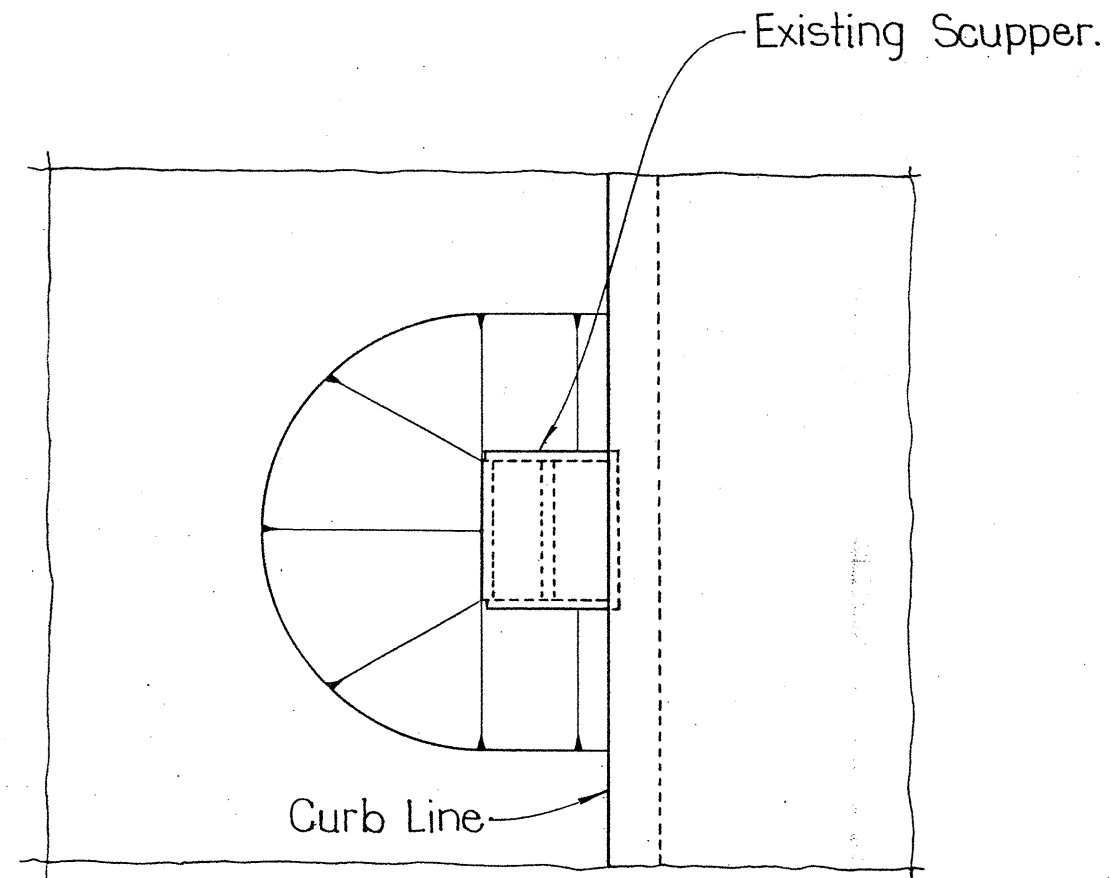
INLET MOUNTED POST

For Details Not Shown See GR-1 (2-5-82)

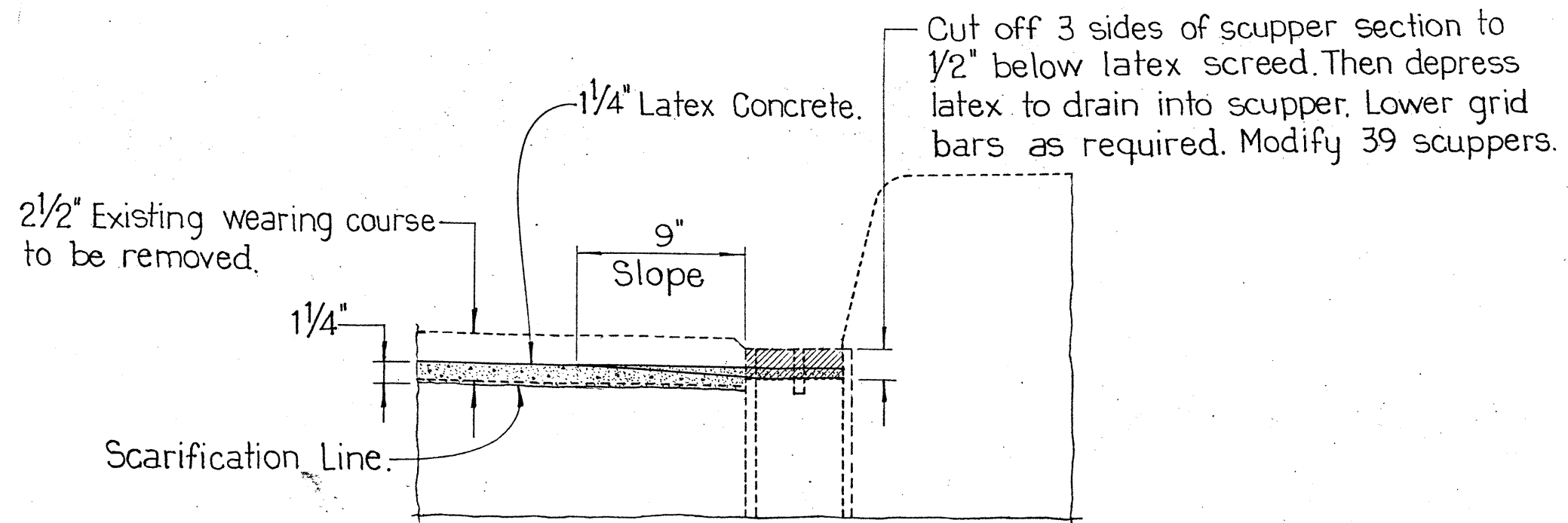
4/19-1986-0164



Note: Joint configuration requires deeper latex thickness at joints than the thickness of overlay on bridge. This tapered thickness shall extend from the thickness required to match the top of the existing latex surface to the nominal 1/4" thickness on the bridge, thru a distance of 50 Ft. both ways from the intermediate expansion joints and 50 Ft. from the North & South abutment onto the bridge.



PLAN



TYPICAL OVERLAY DETAIL AT SCUPPERS