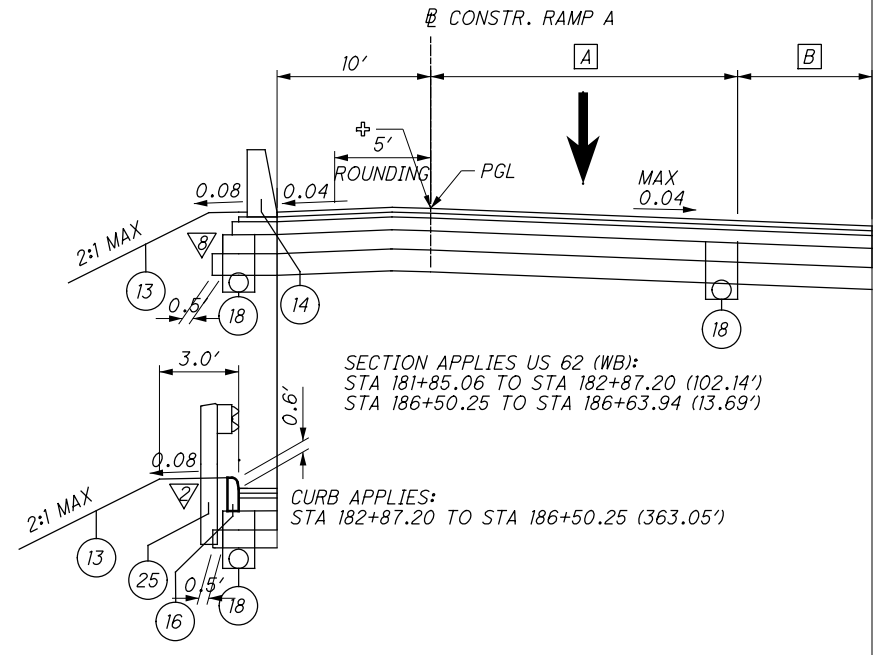
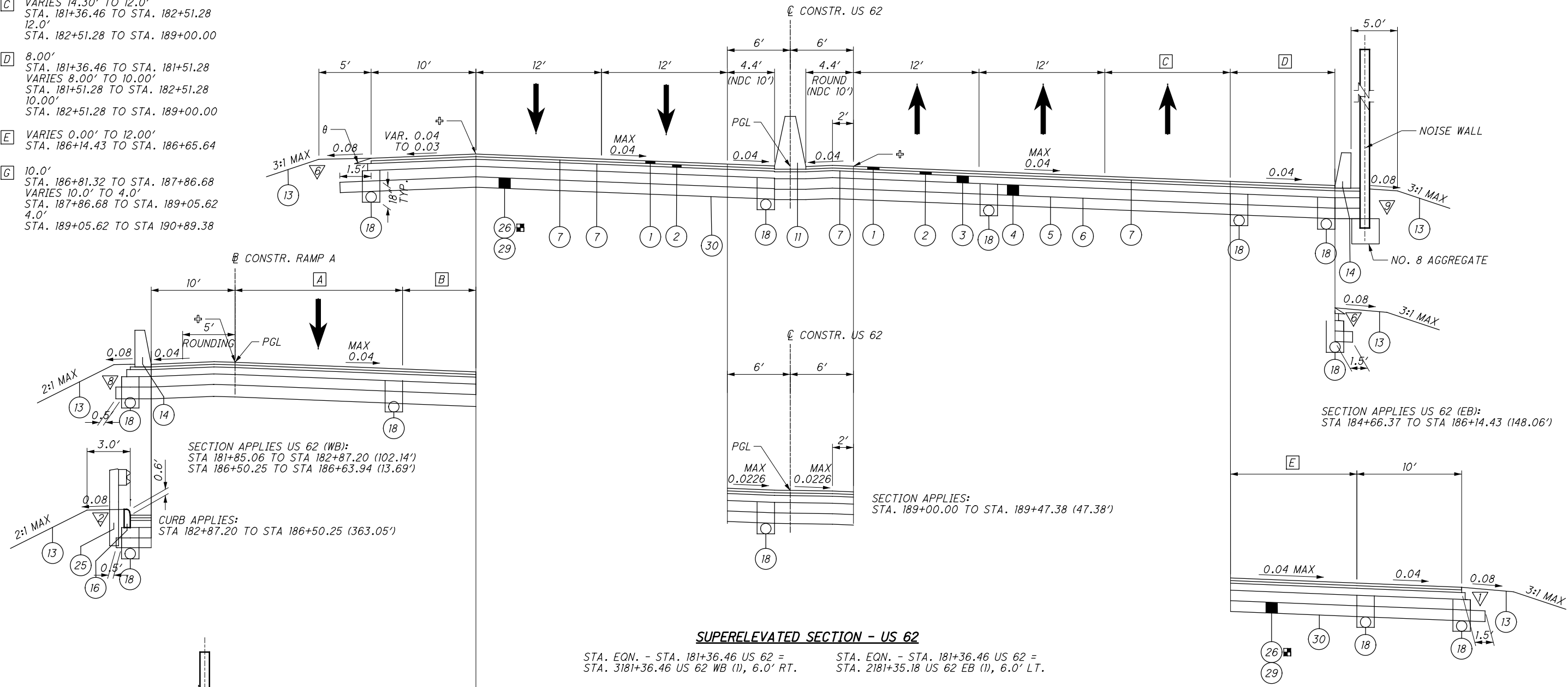


- A** 16.0'
STA. 181+81.20 TO STA. 184+20.18
VARIES 16.0' TO 12.0'
STA. 184+20.18 TO STA. 185+70.00
- B** VARIES 23.0' TO 0.0'
STA. 181+81.20 TO STA. 184+20.18
- C** VARIES 14.30' TO 12.0'
STA. 181+36.46 TO STA. 182+51.28
12.0'
STA. 182+51.28 TO STA. 189+00.00
- D** 8.00'
STA. 181+36.46 TO STA. 181+51.28
VARIES 8.00' TO 10.00'
STA. 181+51.28 TO STA. 182+51.28
10.00'
STA. 182+51.28 TO STA. 189+00.00
- E** VARIES 0.00' TO 12.00'
STA. 186+14.43 TO STA. 186+65.64
- G** 10.0'
STA. 186+81.32 TO STA. 187+86.68
VARIES 10.0' TO 4.0'
STA. 187+86.68 TO STA. 189+05.62
4.0'
STA. 189+05.62 TO STA. 190+89.38

26 ITEM APPLIES:
US 62 (WB & EB) STA. 181+36.46 TO STA. 189+47.38 (810.92')



SECTION APPLIES US 62 (WB):
STA 181+85.06 TO STA 182+87.20 (102.14')
STA 186+50.25 TO STA 186+63.94 (13.69')

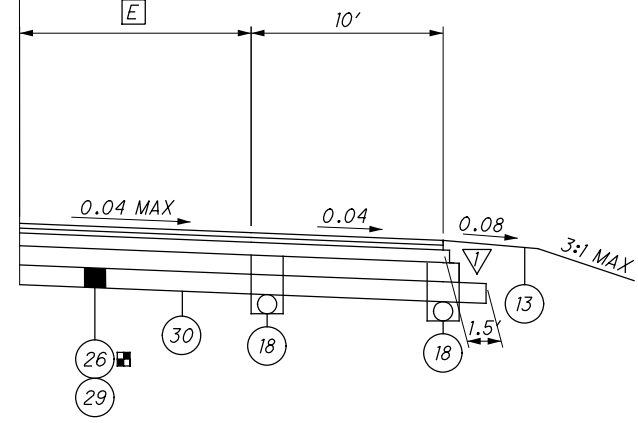
CURB APPLIES:
STA 182+87.20 TO STA 186+50.25 (363.05')

SUPERELEVATED SECTION - US 62

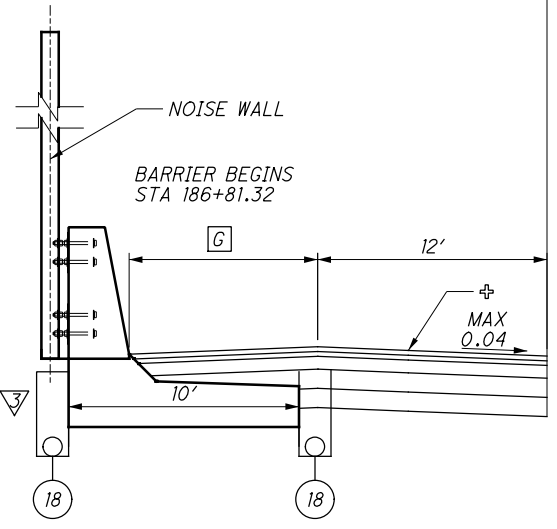
STA. EQN. - STA. 181+36.46 US 62 = STA. 3181+36.46 US 62 WB (1), 6.0' RT.
STA. EQN. - STA. 181+36.46 US 62 = STA. 2181+35.18 US 62 EB (1), 6.0' LT.

SECTION APPLIES US 62 (WB & EB):
STA. 181+36.46 TO STA. 189+47.38 (810.92')

SECTION APPLIES US 62 (EB):
STA 184+66.37 TO STA 186+14.43 (148.06')



SECTION APPLIES US 62 (EB):
STA 186+14.43 TO STA 189+00.00 (285.57')



SECTION APPLIES US 62 (WB):
STA 186+63.94 TO STA 189+47.38 (283.44')

⊕ 7.00% MAX. BREAK
θ - 40° MAX, SEE BP-3.2

FOR LEGEND AND ASPHALT EDGE COURSE DETAILS SEE SHEET 10.

TYPICAL SECTIONS - US 62

STA - 062 - 24.14

...Roadway\Sheets\100824\Y001_11/24/2021 9:44:00 AM ghmassie

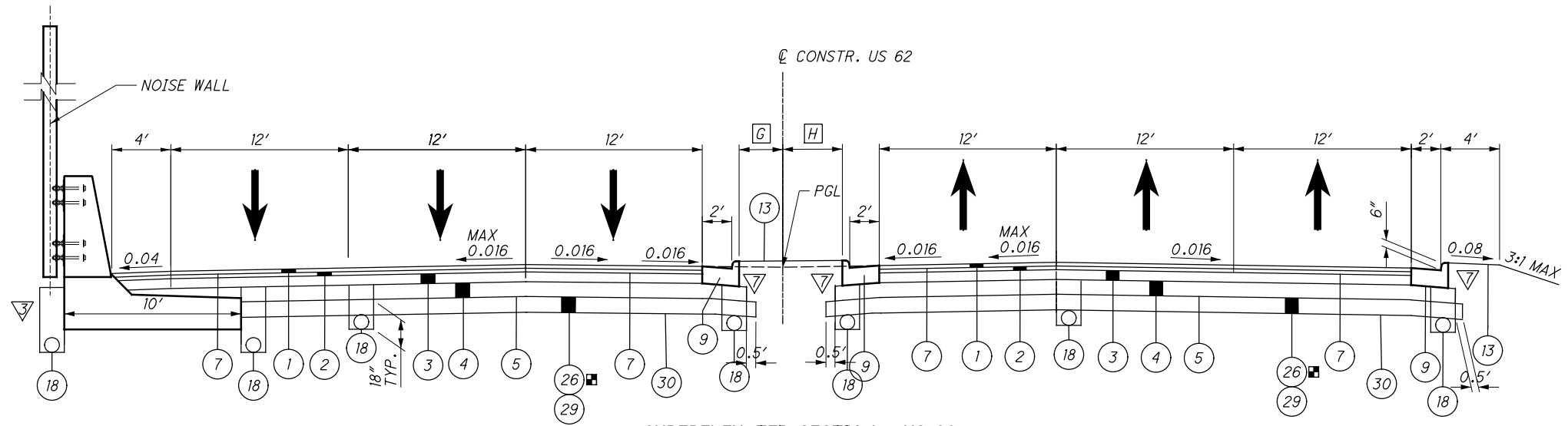
E VARIES 6.00' TO 2.00'
STA. 189+80.00 TO STA. 190+30.00

F VARIES 6.00' TO 2'
STA. 189+80.00 TO STA. 190+05.04

G VARIES 0' TO 3.5'
STA. 189+80.00 TO STA. 190+30.00
3.5'
STA. 190+30.00 TO STA. 190+50.00

H VARIES 0' TO 4.15'
STA. 189+80.00 TO STA. 190+05.04
VARIES 4.15' TO 9.37'
STA. 190+05.04 TO STA. 192+47.50

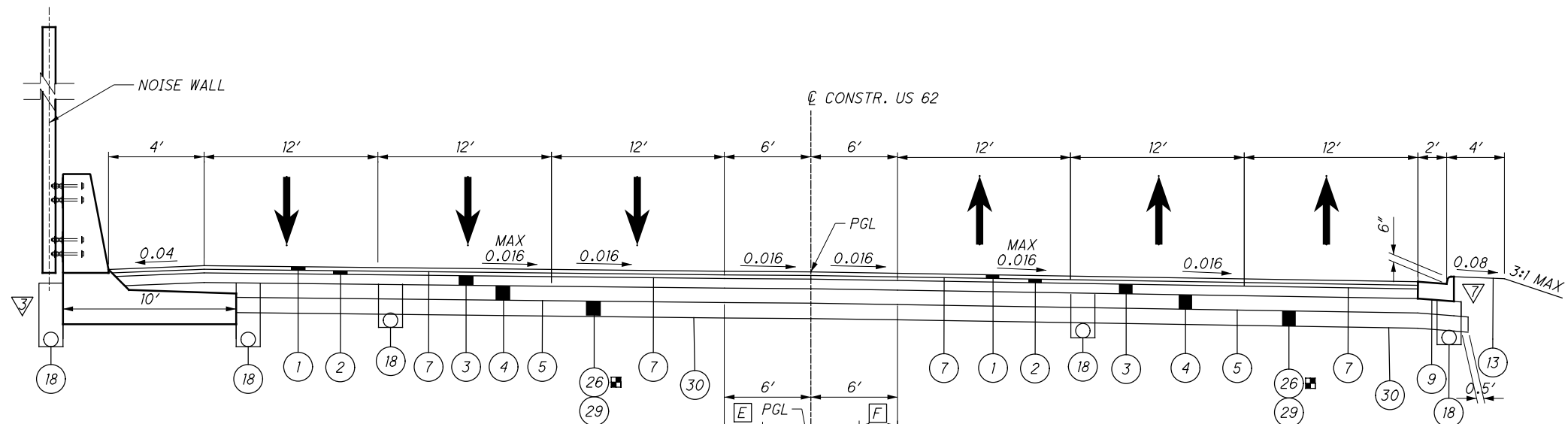
26 ITEM APPLIES:
US 62 (WB) STA. 189+47.38 TO STA. 190+89.38 (142.00')
US 62 (EB) STA. 189+47.38 TO STA. 190+18.38 (71.00')



SUPERELEVATED SECTION - US 62

SECTION APPLIES US 62 (WB):
STA 190+30.00 TO STA. 190+89.38 (59.38')

SECTION APPLIES US 62 (EB):
STA 190+05.04 TO STA. 190+18.38 (13.34')



SECTION APPLIES US 62 (WB):
STA 189+80.00 TO STA. 190+30.00
(50.00')

SECTION APPLIES US 62 (EB):
STA 189+80.00 TO STA. 190+05.04
(25.04')

SUPERELEVATED SECTION - US 62

SECTION APPLIES US 62 (WB):
STA 189+47.38 TO STA. 190+18.38
(71.00')

SECTION APPLIES US 62 (EB):
STA 189+47.38 TO STA. 189+82.88
(35.50')

...Roadway\Sheets\100824GY001_11/24/2021 9:44:57 AM ghmassie

θ - 40° MAX, SEE BP-3.2

FOR LEGEND AND ASPHALT EDGE
COURSE DETAILS SEE SHEET 10 .

TYPICAL SECTIONS - US 62

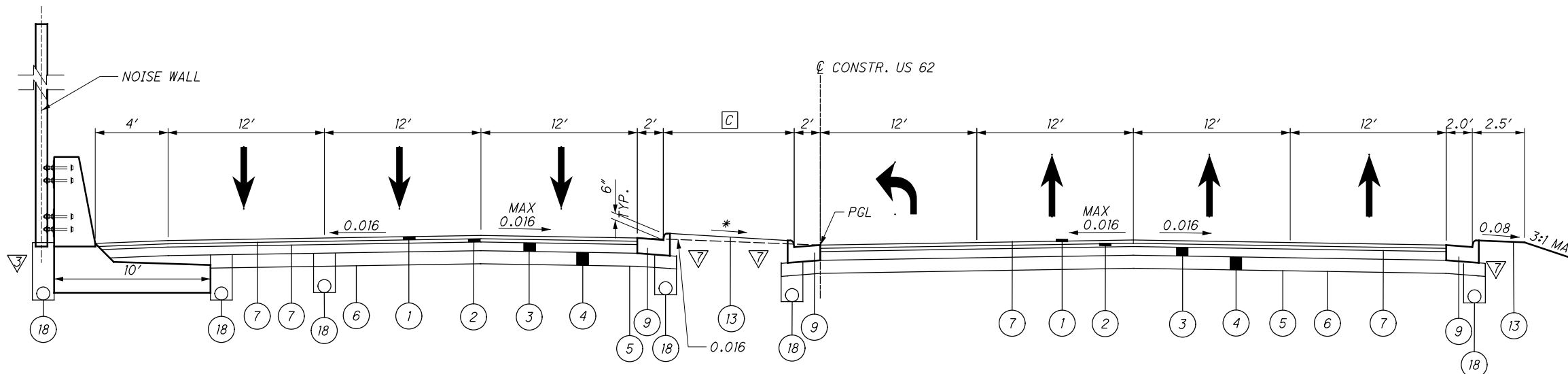
STA - 062 - 24.14

13
500

- A** VARIES 3.37' TO 9.0'
STA. 190+18.38 TO STA. 193+00.00
- B** VARIES 6.17' TO 11.93'
STA. 189+82.88 TO STA. 192+50.00
VARIES 11.93' TO 0.00'
STA. 192+50.00 TO STA. 193+00.00
0.00'
STA. 193+00.00 TO STA. 193+54.00
- C** VARIES 7.0' TO 8.0'
STA. 193+00.00 TO STA. 193+50.00
8.0'
STA. 193+50.00 TO STA. 194+23.92
VARIES 8.0' TO 0.0'
STA. 194+23.92 TO STA. 194+61.00

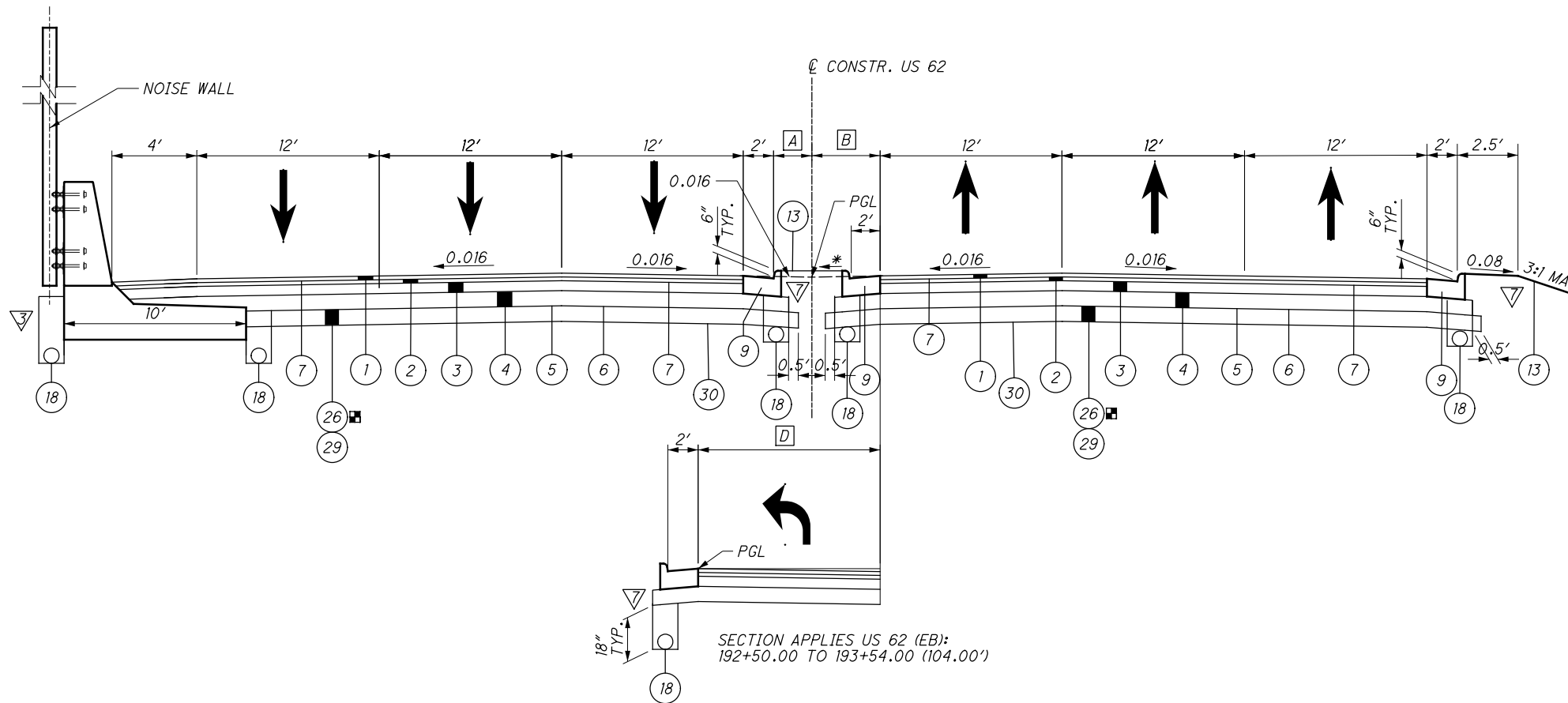
- D** VARIES 0.00' TO 12.00'
STA. 192+50.00 TO STA. 193+00.00

26 ITEM APPLIES:
US 62 (WB) STA. 190+89.38 TO STA. 191+43.00 (53.62')
US 62 (EB) STA. 190+18.38 TO STA. 191+43.00 (124.62')



SUPERELEVATED SECTION - US 62

SECTION APPLIES US 62 (WB): STA 193+54.00 TO STA 193+89.50 (35.50') SECTION APPLIES US 62 (EB): STA 192+83.00 TO STA 193+54.00 (71.00')



NORMAL SECTION - US 62

SECTION APPLIES US 62 (WB): STA 190+89.38 TO STA 193+54.00 (264.62') SECTION APPLIES US 62 (EB): STA 190+18.38 TO STA 192+83.00 (264.62')

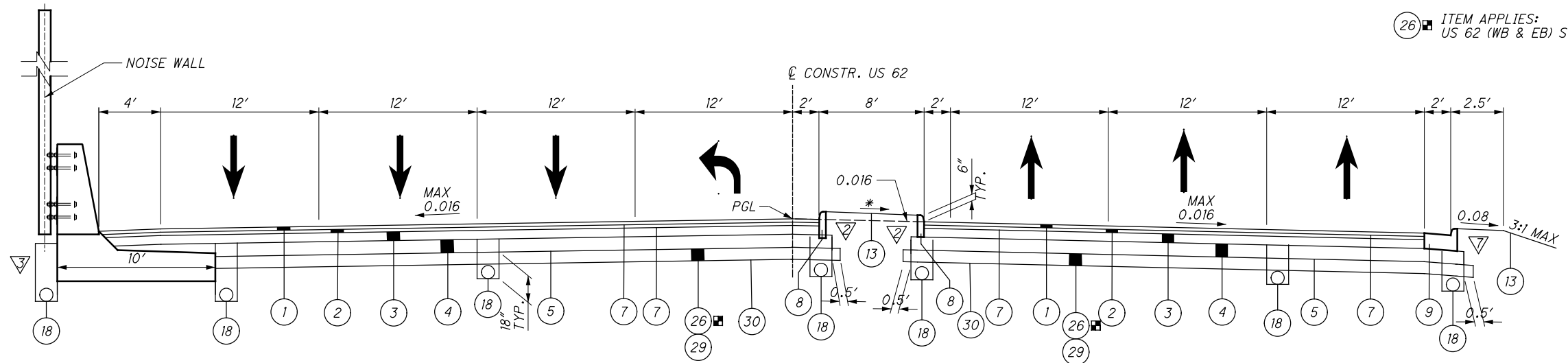
...Roadway\Sheets\100824GY001_11/24/2021 9:45:28 AM ghmassie

* MATCH SLOPE OF ADJACENT LANES
‡ 7.00% MAX. BREAK

FOR LEGEND AND ASPHALT EDGE COURSE DETAILS SEE SHEET 10.

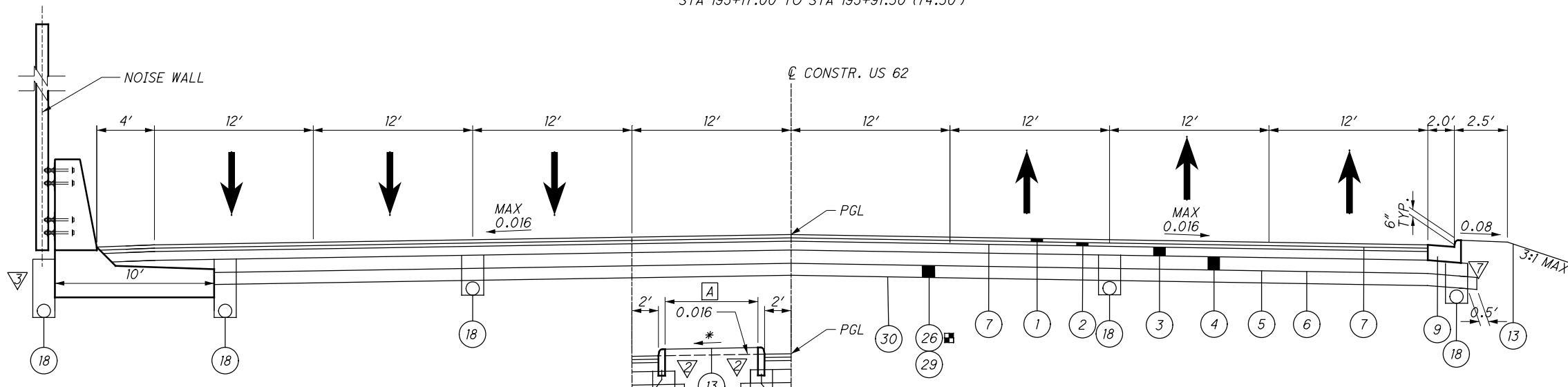
(26) ITEM APPLIES:
US 62 (WB & EB) STA. 195+00.00 TO STA. 196+59.71 (159.71')

A VARIES 7.0' TO 0.0'
STA. 194+23.78 TO STA. 194+61.01



NORMAL SECTION - US 62

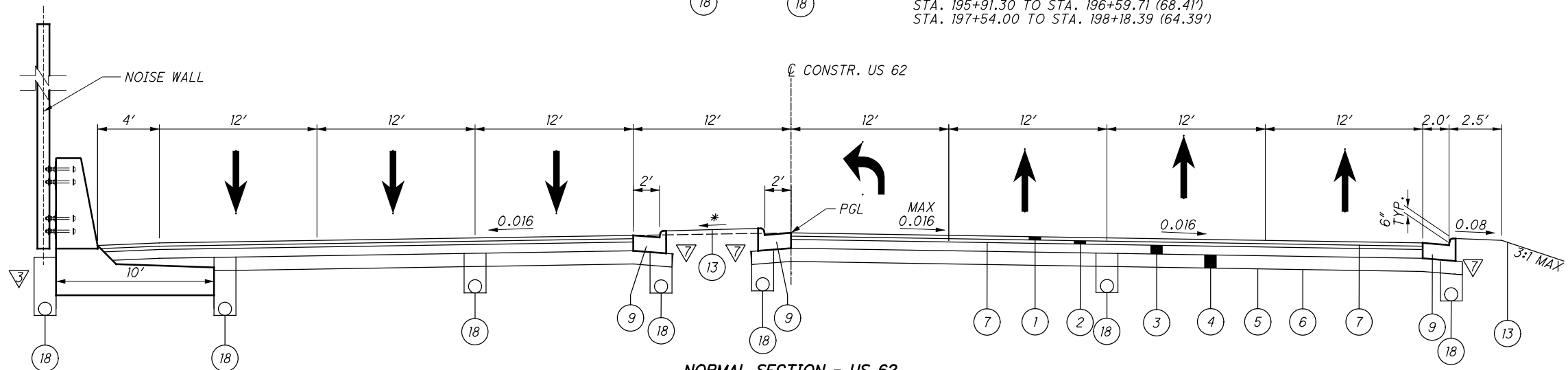
SECTION APPLIES US 62:
STA 195+17.00 TO STA 195+91.30 (74.30')



SECTION APPLIES US 62:
STA. 194+25.00 TO STA. 194+61.01
(36.01')

NORMAL SECTION - US 62

SECTION APPLIES US 62:
STA. 194+25.00 TO STA. 195+17.00 (92.00')
STA. 195+91.30 TO STA. 196+59.71 (68.41')
STA. 197+54.00 TO STA. 198+18.39 (64.39')



NORMAL SECTION - US 62

SECTION APPLIES US 62 (WB):
STA 193+89.50 TO STA 194+25.00
(35.50')

SECTION APPLIES US 62 (EB):
STA 193+54.00 TO STA 194+25.00
(71.00')

* MATCH SLOPE OF ADJACENT LANES

FOR LEGEND AND ASPHALT EDGE
COURSE DETAILS SEE SHEET 10.

TYPICAL SECTIONS - US 62

STA-062-24.14

15
500

...\\Roadway\Sheets\100824GG001.dgn 11/24/2021 3:44:20 PM ghmassie

SHEET NUM.								PART.			ITEM	ITEM EXT	GRAND TOTAL	UNIT	DESCRIPTION	SEE SHEET NO.
30	31	32	33	34	39	393	01/S>2/PV	02/S>2/OT/CANT	03/S>2/ CV							
														NOISE BARRIERS		
						907				907	524	94600	907	FT	DRILLED SHAFTS, 30" DIAMETER	
						24,096				24,096	SPECIAL	60610210	24,096	SF	NOISE BARRIER (REFLECTIVE)	396
						1,440				1,440	SPECIAL	60610920	1,440	SF	NOISE BARRIER, FIBERGLASS PANELS	396
						8,382				8,382	SPECIAL	60610920	8,382	SF	NOISE BARRIER, FIBREGLASS PANELS, MOMENT SLAB MOUNTED	396
														MAINTENANCE OF TRAFFIC		
					108					108	202	38000	108	FT	GUARDRAIL REMOVED	
				7						7	254	01000	7	SY	PAVEMENT PLANING, ASPHALT CONCRETE (WZ RPM)	34
				82						82	411	10000	82	CY	STABILIZED CRUSHED AGGREGATE	34
				500						500	614	11111	500	HOUR	LAW ENFORCEMENT OFFICER WITH PATROL CAR FOR ASSISTANCE, AS PER PLAN	34
					1					1	SPECIAL	61411300	1	EACH	WORK ZONE TRAFFIC SIGNAL	120
			1,750							1,750	614	11630	1,750	FT	INCREASED BARRIER DELINEATION	33
				125						125	SPECIAL	61412200	125	FT	WORK ZONE GUARDRAIL	34
					13					13	614	12380	13	EACH	WORK ZONE IMPACT ATTENUATOR, 24" WIDE HAZARDS, (UNIDIRECTIONAL)	
LS										LS	614	12420	LS		DETOUR SIGNING	30
				230						230	614	12801	230	EACH	WORK ZONE RAISED PAVEMENT MARKER, AS PER PLAN	34
										15	614	13000	15	CY	ASPHALT CONCRETE FOR MAINTAINING TRAFFIC	
						266				266	614	13310	266	EACH	BARRIER REFLECTOR, TYPE 1, ONE-WAY	33
						266				266	614	13350	266	EACH	OBJECT MARKER, ONE WAY	33
		144								144	614	18601	144	SNMT	PORTABLE CHANGEABLE MESSAGE SIGN, AS PER PLAN	32
										1.99	614	20110	1.99	MILE	WORK ZONE LANE LINE, CLASS I, 6", 642 PAINT	
						1.19				1.19	614	21100	1.19	MILE	WORK ZONE CENTER LINE, CLASS I, 642 PAINT	
						14.3				14.3	614	22110	14.3	MILE	WORK ZONE EDGE LINE, CLASS I, 6", 642 PAINT	
						4,932				4,932	614	23210	4,932	FT	WORK ZONE CHANNELIZING LINE, CLASS I, 12", 642 PAINT	
						3,079				3,079	614	24202	3,079	FT	WORK ZONE DOTTED LINE, CLASS I, 6", 642 PAINT	
						279				279	614	26200	279	FT	WORK ZONE STOP LINE, CLASS I, 642 PAINT	
										21	614	30200	21	EACH	WORK ZONE ARROW, CLASS I, 642 PAINT	
	4									4	614	40051	4	EACH	BUSINESS ENTRANCE SIGN, AS PER PLAN	31
				LS						LS	615	10000	LS		ROADS FOR MAINTAINING TRAFFIC	
						1,243				1,243	615	20000	1,243	SY	PAVEMENT FOR MAINTAINING TRAFFIC, CLASS A	
						3,366				3,366	615	20001	3,366	SY	PAVEMENT FOR MAINTAINING TRAFFIC, CLASS A, AS PER PLAN	34
		10								10	616	10000	10	MGAL	WATER	32
				12						12	616	20000	12	TON	CALCIUM CHLORIDE	34
						11,975				11,975	622	41100	11,975	FT	PORTABLE BARRIER, UNANCHORED	
						970				970	622	41011	970	FT	PORTABLE BARRIER, 50", AS PER PLAN	31
															INCIDENTALS	
LS										LS	108	10000	LS		CPM PROGRESS SCHEDULE	
										LS	614	11000	LS		MAINTAINING TRAFFIC	
										33	619	16020	33	MNTH	FIELD OFFICE, TYPE C	
										LS	623	10000	LS		CONSTRUCTION LAYOUT STAKES AND SURVEYING	
										LS	624	10000	LS		MOBILIZATION	

CALCULATED	CHECKED
MSW	GAH
GENERAL SUMMARY	
STA - 062 - 24.14	
128 500	

ITEM	ITEM EXT	GRAND TOTAL	UNIT	DESCRIPTION	SEE SHEET NO.
<i>NOISE BARRIERS</i>					
524	94600	907	FT	DRILLED SHAFTS, 30" DIAMETER	
SPECIAL	60610210	24,096	SF	NOISE BARRIER (REFLECTIVE)	396
SPECIAL	60610920	1440	SF	NOISE BARRIER, FIBERGLASS PANELS	396
SPECIAL	60610920	8382	SF	NOISE BARRIER, FIBERGLASS PANELS, MOMENT SLAB MOUNTED	396
<i>MOMENT SLAB & BARRIER</i>					
503	21100	340	CY	UNCLASSIFIED EXCAVATION	
509	10001	91,525	LB	EPOXY COATED REINFORCING STEEL, AS PER PLAN	411, 414
511	53012	596	CY	CLASS QC2 CONCRETE, MISC.: MOMENT SLAB AND BARRIER	396, 411
512	10100	929	SY	SEALING OF CONCRETE SURFACES (EPOXY-URETHANE)	411, 416
516	13000	106	SF	1/4" PREFORMED EXPANSION JOINT FILLER	
516	13600	175	SF	1" PREFORMED EXPANSION JOINT FILLER	
<i>RETAINING WALLS (MODULAR BLOCK)</i>					
870	10001	817	SF	PREFABRICATED MODULAR RETAINING WALL, AS PER PLAN	396, 416
870	11000	461	CY	WALL EXCAVATION	
870	11100	157	CY	NATURAL SOIL	
870	12000	124	FT	6" DRAINAGE PIPE, PERFORATED	
870	12100	30	FT	6" DRAINAGE PIPE, NON-PERFORATED	
870	14000	2	DAY	ON-SITE ASSISTANCE	
870	15000	LS	-	PMRW INSPECTION AND COMPACTION TESTING	