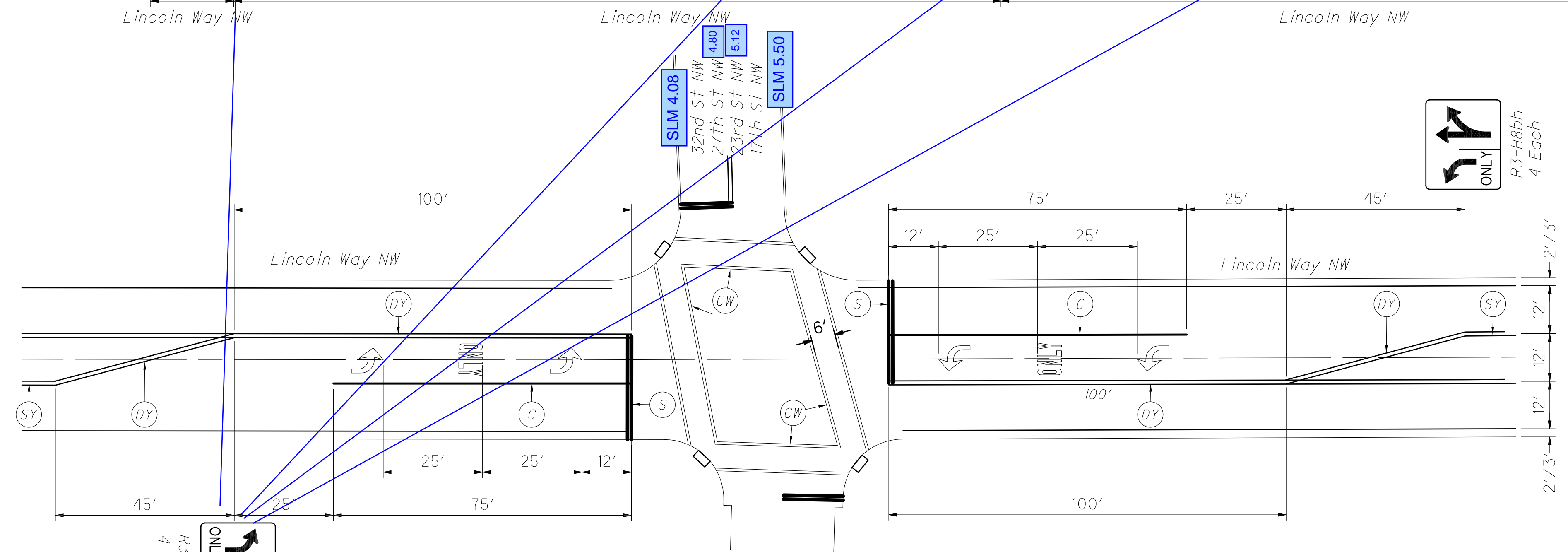


SLM 3.94 Corporation Line 0+00.00
 SLM 4.08 32nd St NW 6+30.39
 SLM 4.36 30th St NW 20+73.15
 SLM 4.50 28+32.54 29th St NW
 SLM 4.80 27th St NW 43+96.72
 SLM 4.96 25th St NW 51+92.50
 SLM 5.12 23rd St NW 61+22.25
 SLM 5.25 Grosvenor Dr. NW 43+96.72
 SLM 5.50 17th St NW 80+97.64
 SLM 5.79 12th St NW 98+48.56
 SLM 5.89 Orange St NW 102+05.79
 SLM 6.09 Houston Pl SW 116+25.01
 SLM 6.25 Approach Slab 121+69.54

269' Type A Striping
 4457' (40' ± Pavement Width) Type B Striping
 3530' (42' ± Pavement Width) Type C Striping
 3034' (36' ± Pavement Width) Type D Striping
 879.7'

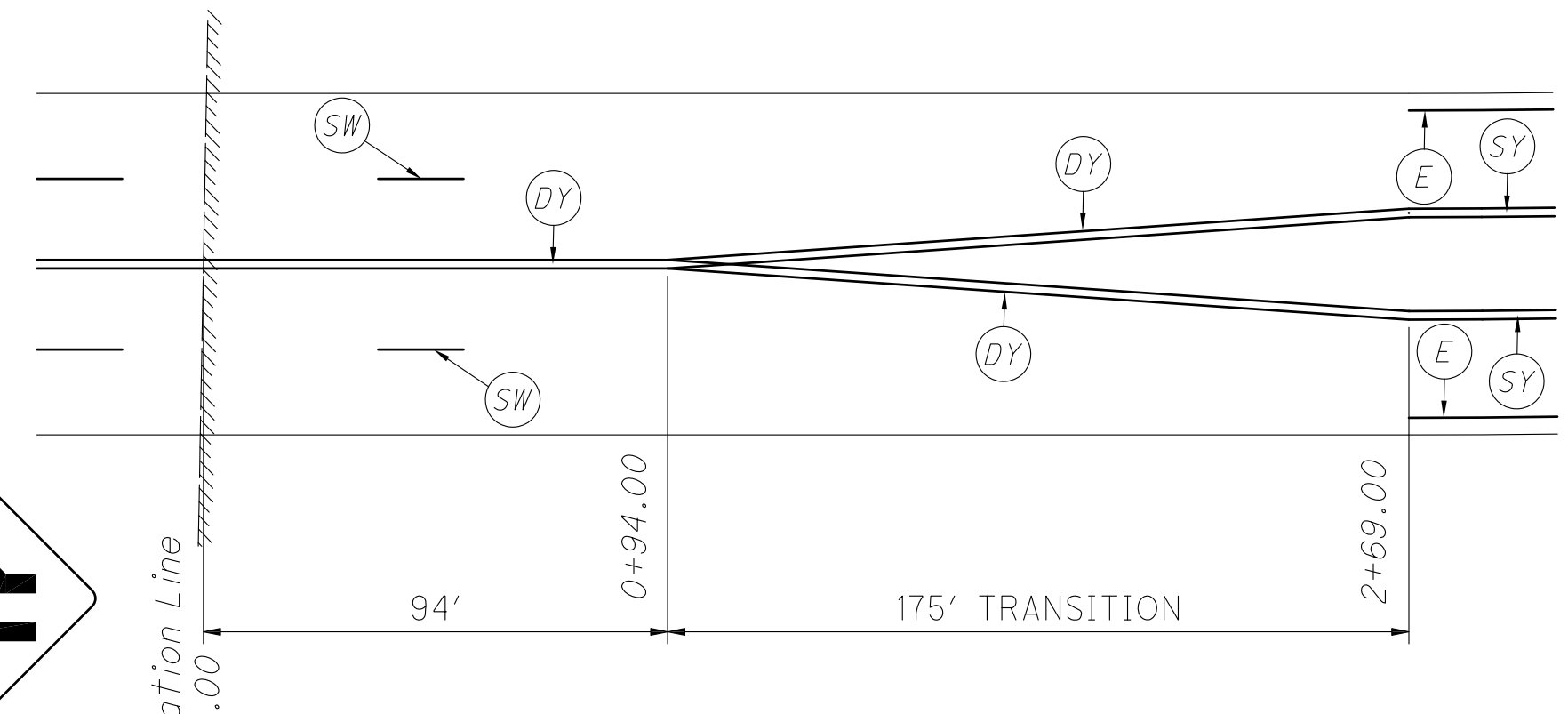


INTERSECTION STRIPING

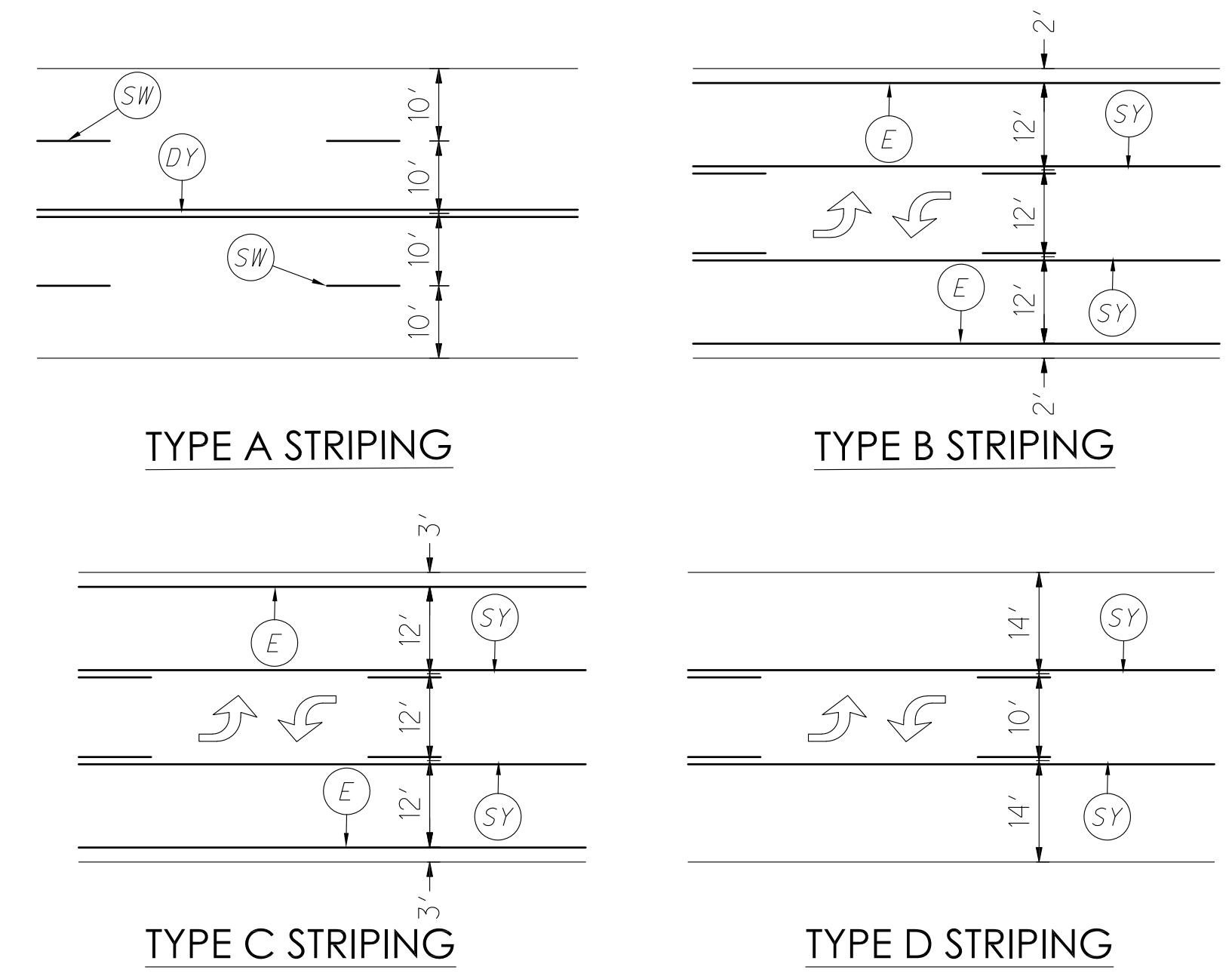
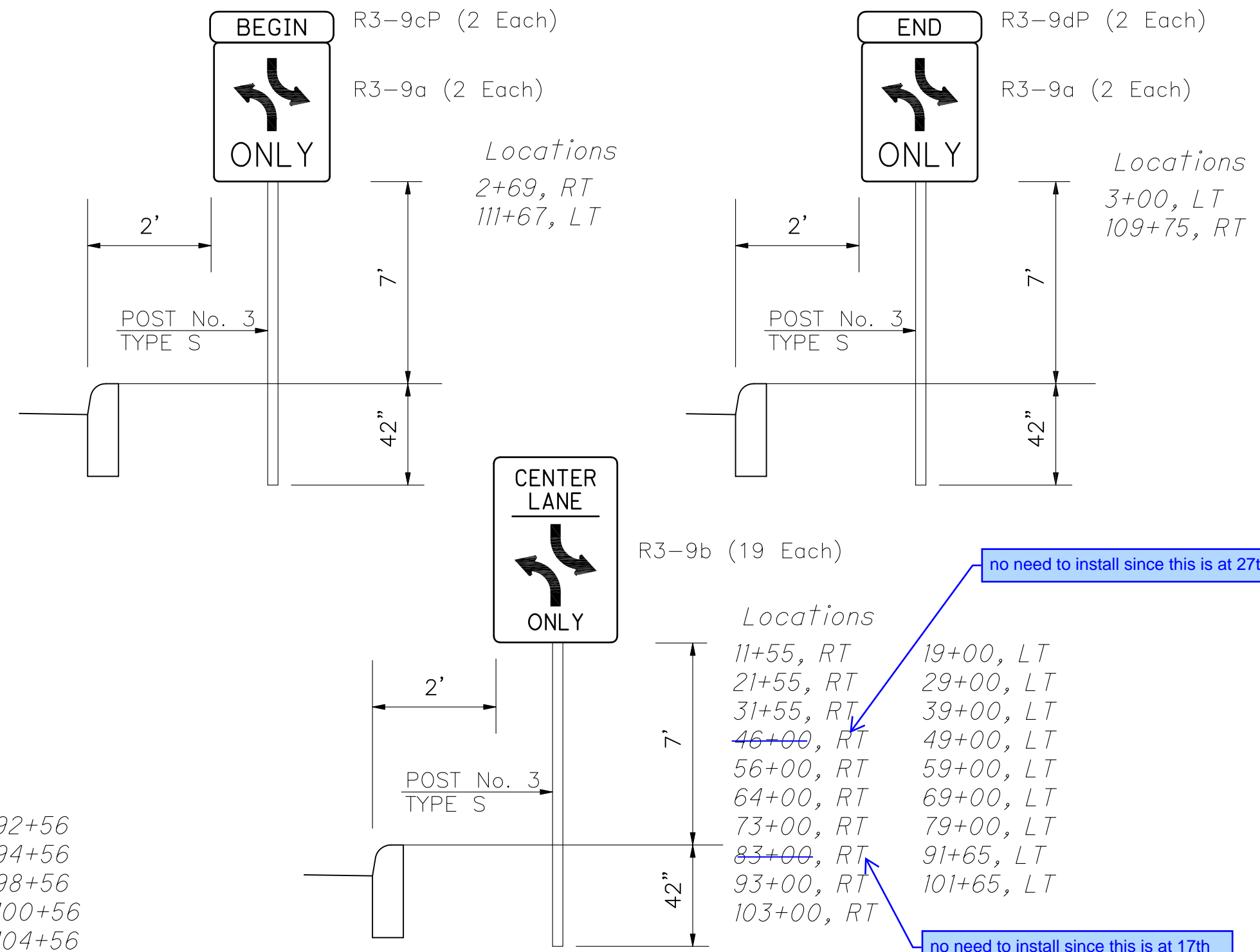
Locations

3+77	32+66	47+30	68+92	92+56
9+50	27+64	50+56	71+20	94+56
12+50	29+86	53+77	73+33	98+56
14+50	32+40	56+30	76+06	100+56
16+50	35+49	58+04	84+06	104+56
18+50	38+88	64+56	87+94	106+56
21+66	40+88	66+92	89+31	108+56

ARROW MARKING LOCATIONS



TRANSITION PLAN



CALCULATED BY NTS
 CHECKED BY AP
 HORIZONTAL SCALE IN FEET

