

**ITEM 614, MAINTAINING TRAFFIC**

THIS ITEM SHALL CONSIST OF MAINTENANCE OF TRAFFIC ON EXISTING ROADWAYS IN ACCORDANCE WITH THE OHIO MANUAL OF UNIFORM TRAFFIC DEVICES FOR STREETS AND HIGHWAYS (OMUTCD), CURRENT EDITION, LATEST REVISION, THE SPECIFICATIONS, AND AS FOLLOWS.

**TIME LIMITATION ON A DETOUR**

A MINIMUM OF ONE LANE OF TRAFFIC IN EACH DIRECTION SHALL BE MAINTAINED AT ALL TIMES, EXCEPT FOR A PERIOD NOT TO EXCEED 60 CONSECUTIVE CALENDAR DAYS, WHEN THROUGH TRAFFIC MAY BE DETOURED AS SHOWN ON SHEET P.10. A DISINCENTIVE SHALL BE ASSESSED IN THE AMOUNT OF \$7,500 PER DAY FOR EACH CALENDAR DAY THE ROADWAY REMAINS CLOSED TO TRAFFIC BEYOND THE SPECIFIED LIMIT.

**NOTICE OF CLOSURE SIGN**

NOTICE OF CLOSURE SIGNS (W20-H13) SHALL BE ERECTED BY THE CONTRACTOR PRIOR TO THE SCHEDULED ROAD CLOSURE IN ACCORDANCE WITH THE NOTICE OF CLOSURE TIME TABLE BELOW.

THE SIGNS SHALL BE ERECTED ON THE RIGHT-HAND SIDE OF THE ROAD FACING TRAFFIC. THEY SHALL BE PLACED SO AS NOT TO INTERFERE WITH THE VISIBILITY OF ANY OTHER TRAFFIC CONTROL SIGNS. ON ROADWAYS, THEY SHOULD BE ERECTED AT OR NEAR THE POINT OF CLOSURE.

NOTICE OF CLOSURE SIGN TIME TABLE		
ITEM	DURATION OF CLOSURE	SIGN DISPLAYED TO PUBLIC
RAMP & ROAD CLOSURES	<= 2 WEEKS	14 CALENDAR DAYS PRIOR TO CLOSURE
	> 12 HOURS & < 2 WEEKS	7 CALENDAR DAYS PRIOR TO CLOSURE
	<= 12 HOURS	2 BUSINESS DAYS PRIOR TO CLOSURE

THE SIGN SHALL DISPLAY THE DATE OF THE CLOSURE IN MM-DD FORMAT AND THE NUMBER OF DAYS OF THE CLOSURE. THE LAST LINE OF THE W20-H13 SIGN LISTS A PHONE NUMBER WHICH A MOTORIST MAY CALL FOR ADDITIONAL INFORMATION. THIS IS TO BE A SPECIFIC OFFICE WITHIN THE COUNTY RATHER THAN THE GENERAL SWITCHBOARD NUMBER.

ROAD WILL BE  
 CLOSED (DATE)  
 FOR 60 DAYS  
 INFO: (PHONE NUMBER)

W20-H13-60

**DETOUR NOTIFICATION (STARK COUNTY)**

THE CONTRACTOR SHALL ADVISE THE STARK COUNTY ENGINEER'S OFFICE EIGHTEEN (18) DAYS IN ADVANCE OF WHEN THE DETOUR ROUTE SHOULD BE IN EFFECT. THE COUNTY OFFICE WILL THEN NOTIFY AREA RESIDENTS, LOCAL EMERGENCY SERVICES, SCHOOL SYSTEMS, AND PUBLIC SERVICE PROVIDERS A MINIMUM OF FOURTEEN (14) DAYS IN ADVANCE OF WHEN THE DETOUR ROUTE SHOULD BE IN EFFECT. ALL WORK ZONE DEVICES REQUIRED SHALL BE FURNISHED, ERECTED, MAINTAINED, AND SUBSEQUENTLY REMOVED BY THE CONTRACTOR. PAYMENT FOR ALL WORK ASSOCIATED WITH THE DETOUR SHALL BE INCLUDED UNDER THE LUMP SUM BID FOR ITEM 614, DETOUR SIGNING.

**SCHOOL DRIVE ACCESS**

THE CONTRACTOR SHALL MAINTAIN ACCESS TO JACKSON HIGH SCHOOL AT ALL TIMES.

**RE-OPENING TO TRAFFIC**


PRIOR TO OPENING THE ROAD TO TRAFFIC, TEMPORARY OR PERMANENT PAVEMENT MARKINGS SHALL BE IN PLACE.

**PEDESTRIAN SAFETY**

THE SAFETY OF PEDESTRIAN AND BICYCLE TRAFFIC SHALL BE CONSIDERED AT ALL TIMES. IT SHALL BE THE CONTRACTOR'S RESPONSIBILITY TO PROVIDE LIGHTS, SIGNS, BARRICADES, AND OTHER DEVICES TO WARN AND PHYSICALLY SEPARATE THE PEDESTRIANS AND BICYCLES FROM HAZARDS INCIDENTAL TO THE CONSTRUCTION AND/OR INSTALLATION OF THE REQUIRED TRAFFIC CONTROL AND ROADWAY ITEMS SUCH AS ANCHOR BOLTS, OPEN EXCAVATIONS, ETC. UNLESS OTHERWISE DIRECTED BY THE ENGINEER, SUCH PEDESTRIAN AND BICYCLE PROTECTION SHALL UTILIZE, BUT NOT BE LIMITED TO, DRUMS, TEMPORARY FENCE, TYPE 1, TYPE 2 OR TYPE 3 BARRICADES.

**SEQUENCE OF CONSTRUCTION**

**PHASE 1**

CLOSE AND DETOUR FULTON DRIVE TO BUILD THE TUNNEL UNDER FULTON DRIVE. CONSTRUCTION OF THE TUNNEL AND THE CLOSURE OF FULTON DRIVE SHALL NOT BEGIN UNTIL MAY 31, 2022. 

**PHASE 2**

UPON THE COMPLETION OF THE TUNNEL, OPEN FULTON DRIVE TO TRAFFIC AND COMPLETE THE REMAINING PORTION OF THE TRAIL CONSTRUCTION.

**MEASUREMENT AND PAYMENT**

ALL WORK AND TRAFFIC CONTROL DEVICES SHALL BE IN ACCORDANCE WITH C&MS 614 AND OTHER APPLICABLE PORTIONS OF THE SPECIFICATIONS, AS WELL AS THE OHIO MANUAL OF UNIFORM TRAFFIC CONTROL DEVICES. PAYMENT FOR ALL LABOR, EQUIPMENT AND MATERIALS SHALL BE INCLUDED IN THE LUMP SUM CONTRACT PRICE FOR ITEM 614, MAINTAINING TRAFFIC, UNLESS SEPARATELY ITEMIZED IN THE PLAN.

ITEM 614, MAINTAINING TRAFFIC LUMP SUM

ITEM 614, DETOUR SIGNING LUMP SUM

**DUST CONTROL**

THE CONTRACTOR SHALL FURNISH AND APPLY WATER FOR DUST CONTROL AS DIRECTED BY THE ENGINEER. THE FOLLOWING ESTIMATED QUANTITIES HAVE BEEN INCLUDED FOR DUST CONTROL PURPOSES:

ITEM 616, WATER 20 M. GAL.

**LANES OPEN DURING HOLIDAYS OR SPECIAL EVENTS**

NO WORK SHALL BE PERFORMED AND ALL EXISTING LANES SHALL BE OPEN TO TRAFFIC DURING THE FOLLOWING DESIGNATED HOLIDAYS OR EVENTS:

CHRISTMAS LABOR DAY  
 NEW YEAR'S THANKSGIVING  
 MEMORIAL DAY

THE PERIOD OF TIME THAT THE LANES ARE TO BE OPEN DEPENDS ON THE DAY OF THE WEEK ON WHICH THE HOLIDAY OR EVENT FALLS. THE FOLLOWING SCHEDULE SHALL BE USED TO DETERMINE THIS PERIOD:

DAY OF HOLIDAY OR EVENT TIME ALL LANES MUST BE OPEN TO TRAFFIC

SUNDAY 12:00N FRIDAY - 6:00AM MONDAY  
 MONDAY 12:00N FRIDAY - 6:00AM TUESDAY  
 TUESDAY 12:00N MONDAY - 6:00AM WEDNESDAY  
 WEDNESDAY 12:00N TUESDAY - 6:00AM THURSDAY  
 THURSDAY 12:00N WEDNESDAY - 6:00AM FRIDAY  
 THURSDAY (THANKSGIVING ONLY) 6:00AM WEDNESDAY - 6:00AM MONDAY  
 FRIDAY 12:00N THURSDAY - 6:00AM MONDAY  
 SATURDAY 12:00N FRIDAY - 6:00AM MONDAY

SHOULD THE CONTRACTOR FAIL TO MEET ANY OF THESE REQUIREMENTS, THE CONTRACTOR SHALL BE ASSESSED A DISINCENTIVE PER THE LANE VALUE CONTRACT (PN 127).

DESIGN AGENCY



DESIGNER

KWR

REVIEWER

DRB 06/01/21

PROJECT ID

110429

SHEET TOTAL

P.8 P.78

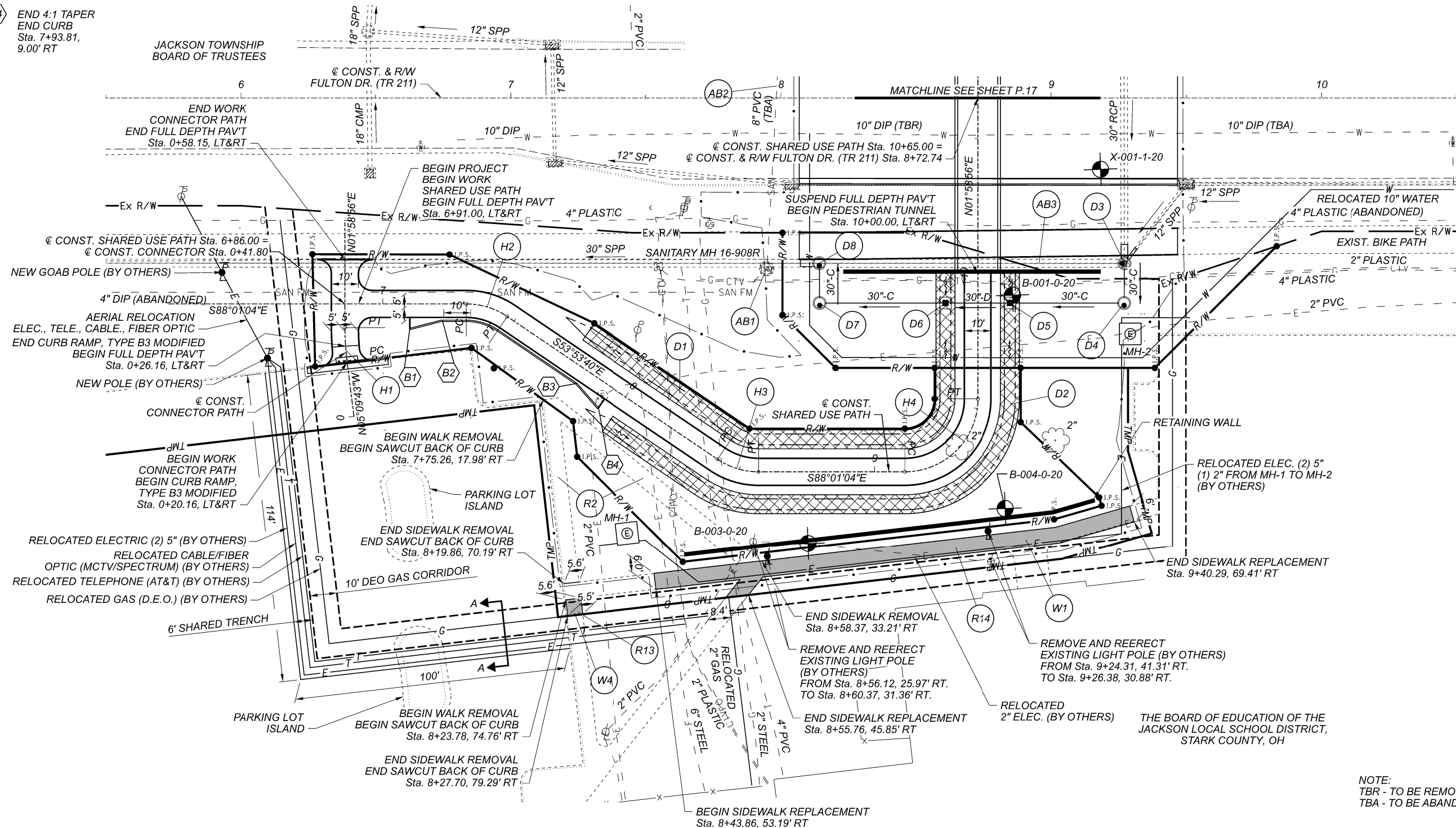
 REVISED 3/1/22

SHEET NUM.										PART.			ITEM	ITEM EXT	GRAND TOTAL	UNIT	DESCRIPTION	SEE SHEET NO.
7A	8	9	14	52	55	56	01/ENH/BR	02/ENH/OT	03/ENH/OT									
																RETAINING WALL (FOR SUBSUMMARY SEE SHEET P.61)		
																<b>SANITARY SEWER</b>		
LS										LS	611	97300	LS			CONDUIT, MISC.: 8-INCH SANITARY SEWER VIDEO RECORDING & INSPECTION, SCSED	7A	
LS										LS	611	97300	LS			CONDUIT, MISC.: MAINTAING SANITARY FLOW DURING CONSTRUCTION, SCSED	7A	
			268								268	97400	268	FT		CONDUIT, MISC.: 8-INCH SANITARY SEWER, SCSED	7A	
			236								236	97400	236	FT		CONDUIT, MISC.: 14-INCH FORCE MAIN, DIP CLASS 52, MECHANICAL JOINTS AND FITTINGS, SCSED	7A	
			1								1	99690	1	EACH		MANHOLE, MISC.: SANITARY SEWER MANHOLE SHALLOW PRECAST, SCSED	7A	
			1								1	99690	1	EACH		MANHOLE, MISC.: SANITARY SEWER MANHOLE TYPE A, SCSED	7A	
																<b>LIGHTING</b>		
						6					625	00450	6	EACH		CONNECTION, FUSED PULL APART		
						12					625	00480	12	EACH		CONNECTION, UNFUSED PERMANENT		
						2					625	10503	2	EACH		LIGHT POLE (INSTALLATION ONLY), AS PER PLAN	55	
						1,119					625	23302	1,119	FT		NO. 6 AWG 2400 VOLT DISTRIBUTION CABLE		
						72					625	23400	72	FT		NO. 10 AWG POLE AND BRACKET CABLE		
						116					625	24321	116	FT		1-1/2" DUCT CABLE WITH THREE NO. 4 AWG 2400 VOLT CABLES, AS PER PLAN	55	
						238					625	25300	238	FT		CONDUIT, 1-1/2", 725.04		
						65					625	25500	65	FT		CONDUIT, 3", 725.04		
						6					625	27503	6	EACH		LUMINAIRE, UNDERPASS, SOLID STATE (LED), AS PER PLAN (IES-III, LED, 3,100-3,300 LUMENS)	55	
						2					625	27561	2	EACH		LUMINAIRE, INSTALLATION ONLY, AS PER PLAN	55	
						399					625	29002	399	FT		TRENCH, 24" DEEP		
						7					625	30700	7	EACH		PULL BOX, 725.08, 18"		
						1					625	31510	1	EACH		PULL BOX REMOVED		
						2					625	32000	2	EACH		GROUND ROD		
						1					625	34001	1	EACH		POWER SERVICE, AS PER PLAN	55	
						399					625	36011	399	FT		UNDERGROUND WARNING/MARKING TAPE, AS PER PLAN	55	
						1					625	37101	1	EACH		SERVICE TO UNDERPASS LIGHTING, AS PER PLAN	55	
						3					625	75800	3	EACH		DISCONNECT CIRCUIT		
					1						625	76000	1	EACH		ARC FLASH CALCULATIONS AND LABEL, (CC-'F')		
						2					625	98000	2	EACH		LIGHTING, MISC.: LIGHT POLE FOUNDATION, 20" X 5' DEEP	55	
																<b>TRAFFIC CONTROL</b>		
						26					630	02100	26	FT		GROUND MOUNTED SUPPORT, NO. 2 POST		
						31					630	03100	31	FT		GROUND MOUNTED SUPPORT, NO. 3 POST		
						28.5					630	80100	28.5	SF		SIGN, FLAT SHEET		
						1					630	84900	1	EACH		REMOVAL OF GROUND MOUNTED SIGN AND DISPOSAL		
						2					630	86002	2	EACH		REMOVAL OF GROUND MOUNTED POST SUPPORT AND DISPOSAL		
						0.05					644	00100	0.05	MILE		EDGE LINE, 4"		
						0.03					644	00200	0.03	MILE		LANE LINE, 4"		
						0.03					644	00300	0.03	MILE		CENTER LINE		
						87					644	00400	87	FT		CHANNELIZING LINE, 8"		
						235					644	00620	235	FT		CROSSWALK LINE, 12"		
						6					644	00700	6	FT		TRANSVERSE/DIAGONAL LINE		
						1					644	01300	1	EACH		LANE ARROW		
																<b>MAINTENANCE OF TRAFFIC</b>		
			8								614	11110	8	HOUR		LAW ENFORCEMENT OFFICER WITH PATROL CAR FOR ASSISTANCE		
	LS										614	12420	LS			DETOUR SIGNING		
	20										616	10000	20	MGAL		WATER		
																STRUCTURE (20 FOOT SPAN AND UNDER) (FOR SUBSUMMARY SEE SHEET P.61)		
																<b>INCIDENTALS</b>		
	LS										LS	614	11000	LS		MAINTAINING TRAFFIC		
											LS	619	16010	LS		FIELD OFFICE, TYPE B		
											LS	623	10000	LS		CONSTRUCTION LAYOUT STAKES AND SURVEYING		
											LS	624	10000	LS		MOBILIZATION		
											LS	SPECIAL	69098400	LS		SURVEY CONTROL VERIFICATION	6	



△ 1 REVISED 3/1/22

- B1 BEGIN CURB  
BEGIN 4:1 TAPER  
Sta. 7+10.00,  
9.00' RT
- B2 END 4:1 TAPER  
Sta. 7+22.00,  
6.00' RT
- B3 BEGIN 4:1 TAPER  
Sta. 7+82.19,  
6.00' RT
- B4 END 4:1 TAPER  
END CURB  
Sta. 7+93.81,  
9.00' RT



- |                                                                                                                                                                            |                                                                                                                                                                             |                                                                                                                                                                             |                                                                                                                                                                               |
|----------------------------------------------------------------------------------------------------------------------------------------------------------------------------|-----------------------------------------------------------------------------------------------------------------------------------------------------------------------------|-----------------------------------------------------------------------------------------------------------------------------------------------------------------------------|-------------------------------------------------------------------------------------------------------------------------------------------------------------------------------|
| H1 CURVE DATA<br>P.I. = Sta. 0+26.78<br>Δ = 07°08'39" RT<br>Dc = 57°17'45"<br>R = 100.00'<br>T = 6.24'<br>L = 12.47'<br>E = .19'<br>PC = Sta. 0+20.54<br>PT = Sta. 0+33.01 | H2 CURVE DATA<br>P.I. = Sta. 7+39.14<br>Δ = 34°07'24" RT<br>Dc = 212°12'24"<br>R = 27.00'<br>T = 8.29'<br>L = 16.08'<br>E = 1.24'<br>PC = Sta. 7+30.85<br>PT = Sta. 7+46.93 | H3 CURVE DATA<br>P.I. = Sta. 8+49.36<br>Δ = 34°07'24" LT<br>Dc = 212°12'24"<br>R = 27.00'<br>T = 8.29'<br>L = 16.08'<br>E = 1.24'<br>PC = Sta. 8+41.07<br>PT = Sta. 8+57.15 | H4 CURVE DATA<br>P.I. = Sta. 9+38.15<br>Δ = 90°00'00" LT<br>Dc = 212°12'24"<br>R = 27.00'<br>T = 27.00'<br>L = 42.41'<br>E = 11.18'<br>PC = Sta. 9+11.15<br>PT = Sta. 9+53.56 |
|----------------------------------------------------------------------------------------------------------------------------------------------------------------------------|-----------------------------------------------------------------------------------------------------------------------------------------------------------------------------|-----------------------------------------------------------------------------------------------------------------------------------------------------------------------------|-------------------------------------------------------------------------------------------------------------------------------------------------------------------------------|

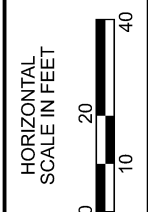
1 REVISED 3/1/22  
 NOTE: PROPOSED WATERLINE RELOCATION WILL BE MODIFIED. SEE UTILITY NOTE 4A.

ABANDONED CONDUIT NOTE:  
 ACTIVE UTILITY LINES HAVE BEEN REMOVED FROM AT&T, MCTV, CHARTER AND THE ELECTRIC DUCTS, HOWEVER THE CONTRACTOR IS ADVISED THAT CONCRETE ENCASED CONDUITS REMAIN. REMOVAL OF SUCH CONDUITS OR CONCRETE ENCASEMENT IS CONSIDERED INCIDENTAL AND TO BE INCLUDED WITH ITEM 203 - EXCAVATION. CONDUIT SHALL BE REMOVED TO A NEAT EDGE AT A DEPTH OF APPROXIMATELY 2' BELOW FINISHED GRADE.

NOTE:  
 TBR - TO BE REMOVED  
 TBA - TO BE ABANDONED

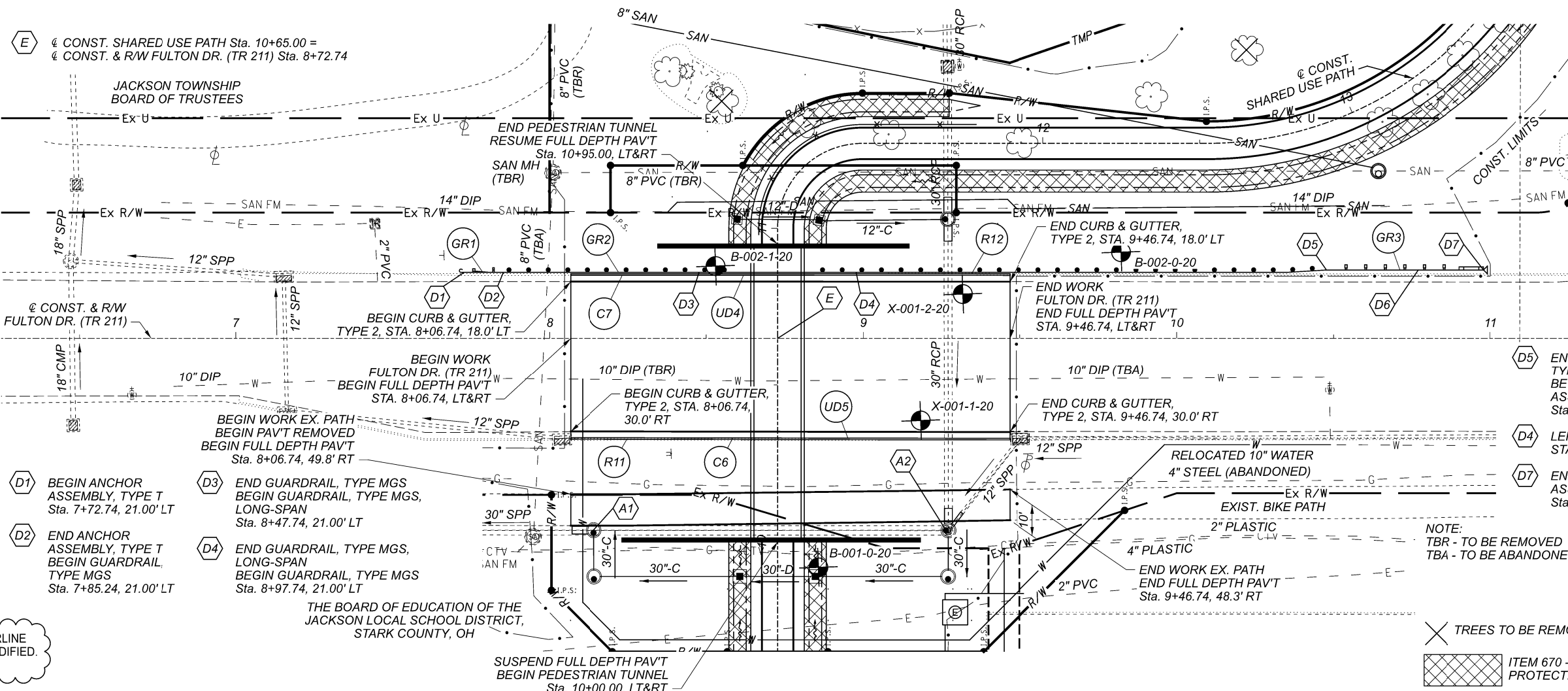
ITEM 670 - DITCH EROSION PROTECTION (7.5' WIDE TYP.)  
 APPROXIMATE LOCATION OF EXISTING ASPHALT WALK FROM UTILITY RELOCATIONS

CROSS REFERENCES	
SHEET NO(S)	INTERSECTION DETAIL SHEET
P.41	SUP AND CONNECTOR PROFILE
P.18	FULTON DR PLAN AND PROFILE



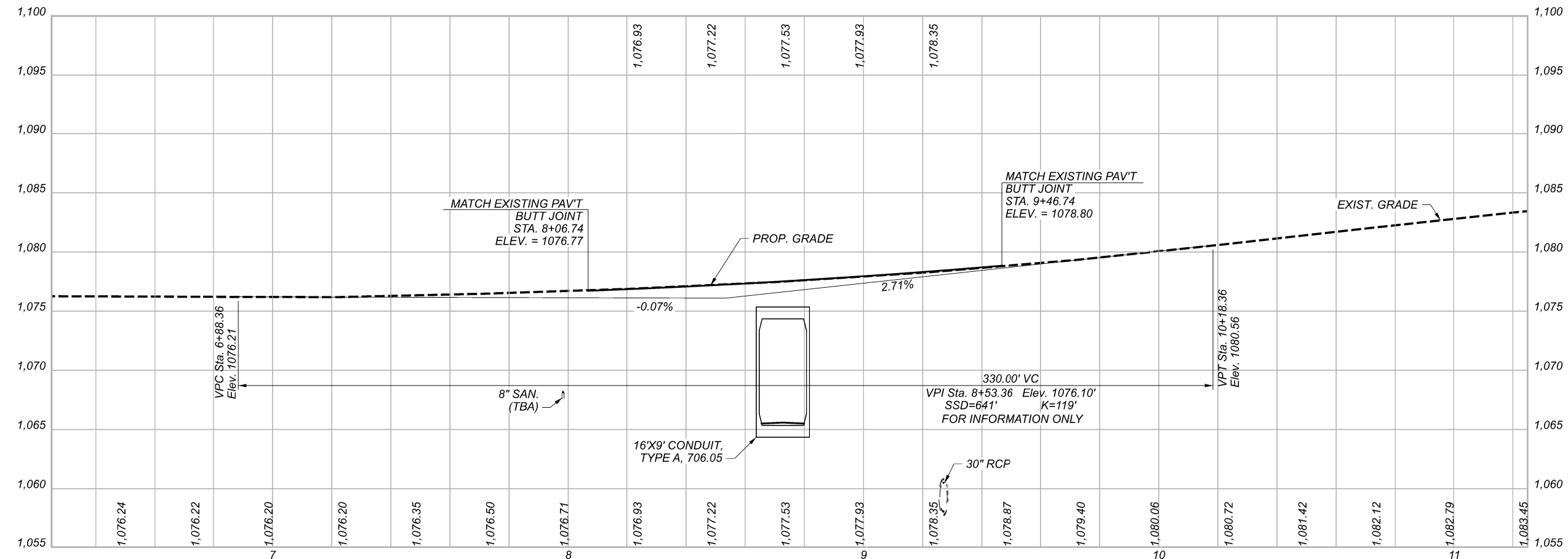
SHARED USE PATH AND CONNECTOR PLAN SHEET  
 STA. 6+86 TO STAL 10+65

DESIGN AGENCY	ms consultants, inc.
DESIGNER	
REVIEWER	WBH 07/16/21
PROJECT ID	110429
SHEET TOTAL	P.16 P.78

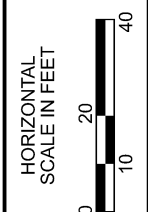


- A1 BEGIN FILL AND ABANDON STA. 8+14.14, 61.26 RT
- A2 END FILL AND ABANDON STA. 9+27.13, 61.33' RT
- D1 BEGIN ANCHOR ASSEMBLY, TYPE T STA. 7+72.74, 21.00' LT
- D2 END ANCHOR ASSEMBLY, TYPE T BEGIN GUARDRAIL, TYPE MGS STA. 7+85.24, 21.00' LT
- D3 END GUARDRAIL, TYPE MGS BEGIN GUARDRAIL, TYPE MGS, LONG-SPAN STA. 8+47.74, 21.00' LT
- D4 END GUARDRAIL, TYPE MGS, LONG-SPAN BEGIN GUARDRAIL, TYPE MGS STA. 8+97.74, 21.00' LT

1 REVISED 3/1/22  
 NOTE: PROPOSED WATERLINE RELOCATION WILL BE MODIFIED. SEE UTILITY NOTE 4A.



E @ CONST. SHARED USE PATH Sta. 10+65.00 =  
 @ CONST. & R/W FULTON DR. (TR 211) Sta. 8+72.74



FULTON DR. (TR 211)  
 PLAN AND PROFILE

DESIGN AGENCY	ms consultants, inc.
DESIGNER	JDK
REVIEWER	WBH 07/16/21
PROJECT ID	110429
SHEET TOTAL	P.19 P.78